

Data Path : Z:\pestpcbsrv\HPCHEM1\ECD_Q\Data\PQ012621\
 Data File : PQ051920.D
 Signal(s) : Signal #1: ECD1A.ch Signal #2: ECD2B.ch
 Acq On : 27 Jan 2021 02:44
 Operator : DD\AJ
 Sample : AR1268ICC800
 Misc :
 ALS Vial : 41 Sample Multiplier: 1

Instrument :
 ECD_Q
 ClientSampleId :

Integration File signal 1: autoint1.e
 Integration File signal 2: autoint2.e
 Quant Time: Jan 27 06:18:14 2021
 Quant Method : Z:\pestpcbsrv\HPCHEM1\ECD_Q\Method\PQ012621CLP.M
 Quant Title : GC EXTRACTABLES
 QLast Update : Wed Jan 27 06:16:15 2021
 Response via : Initial Calibration
 Integrator: ChemStation

Volume Inj. : 1 µl
 Signal #1 Phase : ZB MR1 Signal #2 Phase: ZB MR2
 Signal #1 Info : 30Mx0.32mmx 0.5µm Signal #2 Info : 30M x 0.32mm x 0.25µm

Compound	RT#1	RT#2	Resp#1	Resp#2	ng/ml	ng/ml

System Monitoring Compounds						
1) SA Tetrachlo...	5.230	4.248	984.0E6	324.9E6	38.696	39.159
2) SA Decachlor...	11.423	9.596	3100.8E6	1125.0E6	78.651	79.885
Target Compounds						
41) L9 AR-1268-1	9.792	8.467	2763.4E6	1042.5E6	783.029	756.364
42) L9 AR-1268-2	9.896	8.532	2521.2E6	1010.1E6	783.018	790.509
43) L9 AR-1268-3	10.139	8.741	2157.8E6	860.4E6	773.670	779.964
44) L9 AR-1268-4	10.608	9.033	878.9E6	331.2E6	800.041	814.605
45) L9 AR-1268-5	11.058	9.334	7037.8E6	2666.9E6	809.940	806.057

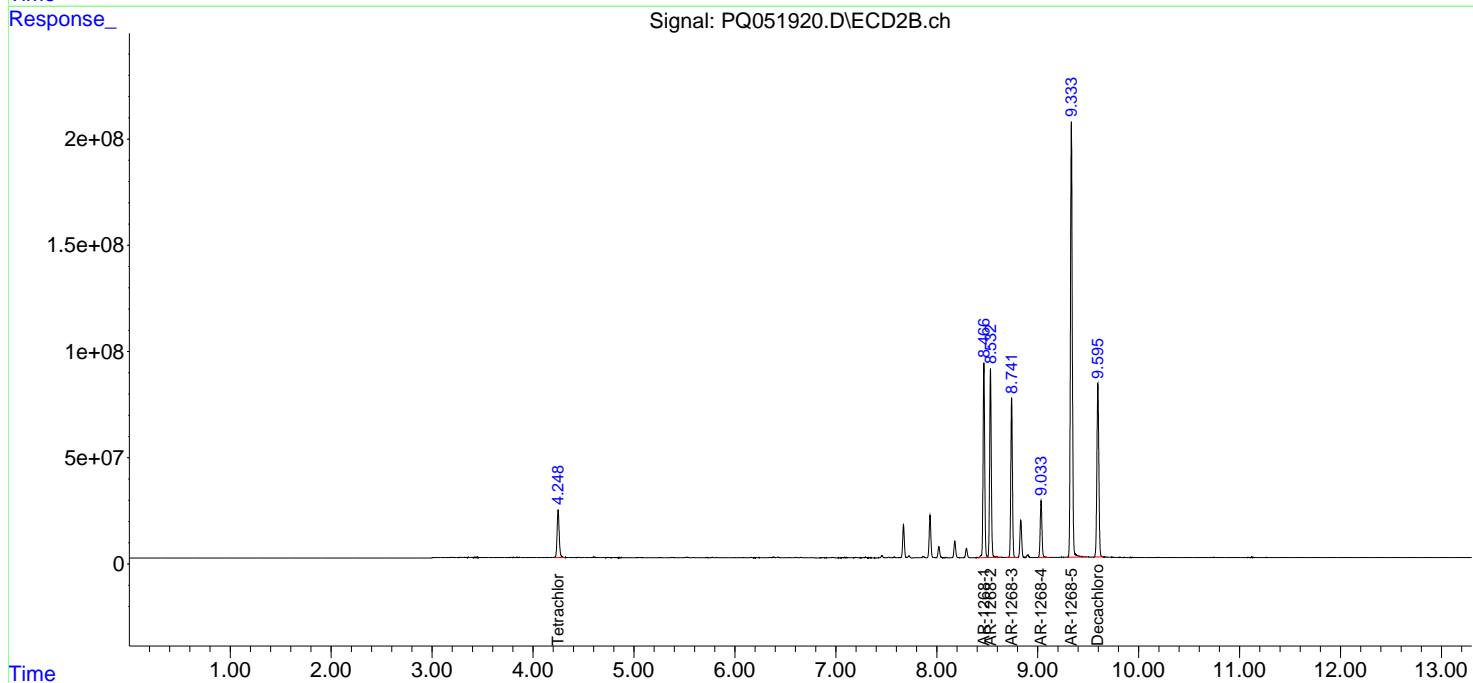
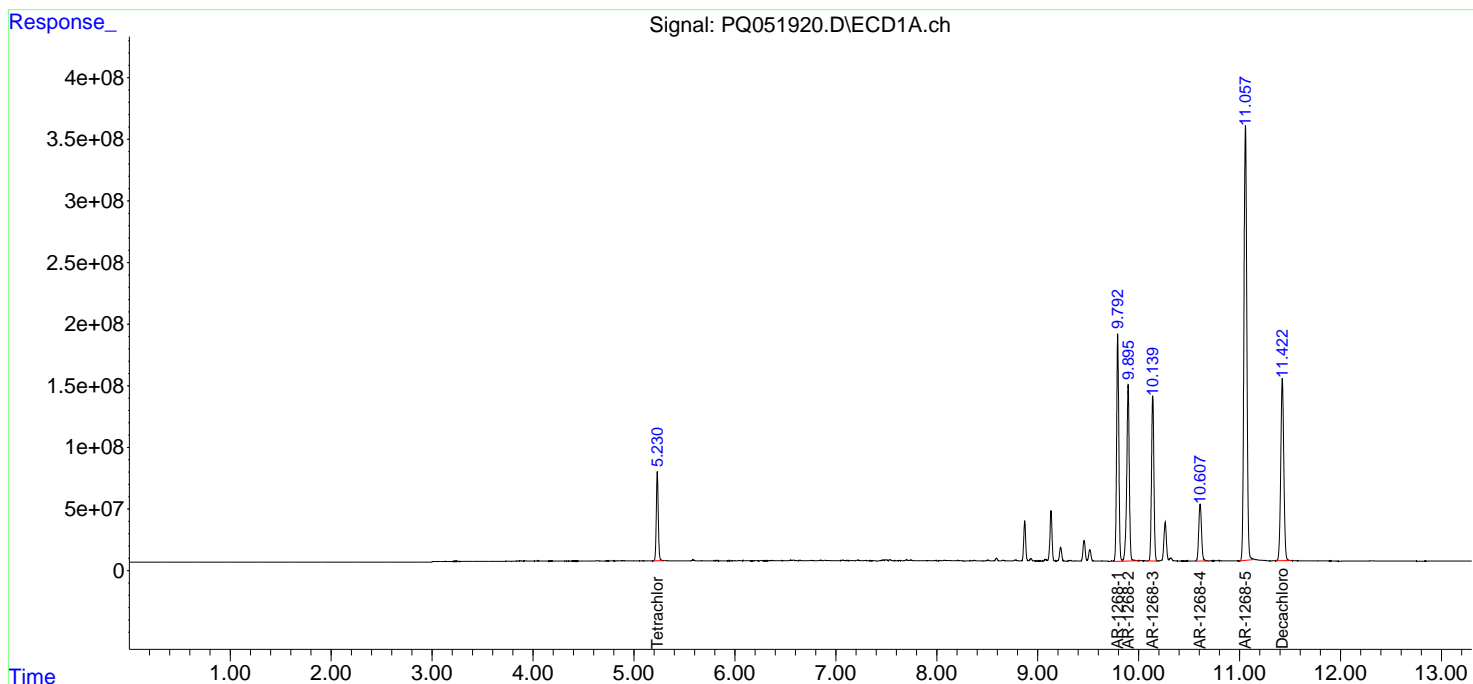
(f)=RT Delta > 1/2 Window (#)=Amounts differ by > 25% (m)=manual int.

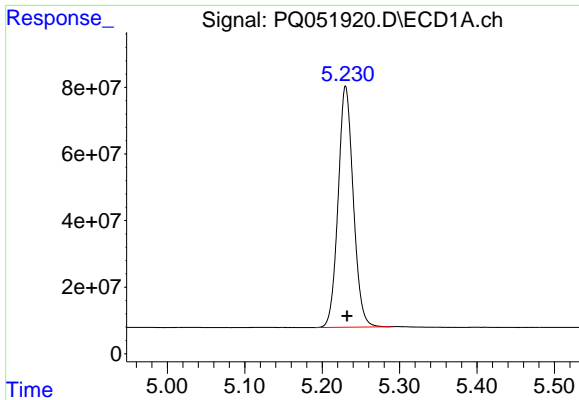
Data Path : Z:\pestpcbsrv\HPCHEM1\ECD_Q\Data\PQ012621\
 Data File : PQ051920.D
 Signal(s) : Signal #1: ECD1A.ch Signal #2: ECD2B.ch
 Acq On : 27 Jan 2021 02:44
 Operator : DD\AJ
 Sample : AR1268ICC800
 Misc :
 ALS Vial : 41 Sample Multiplier: 1

Instrument :
 ECD_Q
 ClientSampled :

Integration File signal 1: autoint1.e
 Integration File signal 2: autoint2.e
 Quant Time: Jan 27 06:18:14 2021
 Quant Method : Z:\pestpcbsrv\HPCHEM1\ECD_Q\Method\PQ012621CLP.M
 Quant Title : GC EXTRACTABLES
 QLast Update : Wed Jan 27 06:16:15 2021
 Response via : Initial Calibration
 Integrator: ChemStation

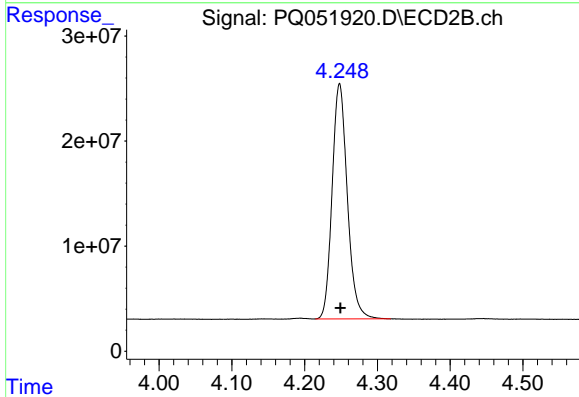
Volume Inj. : 1 µl
 Signal #1 Phase : ZB MR1 Signal #2 Phase: ZB MR2
 Signal #1 Info : 30Mx0.32mmx 0.5µm Signal #2 Info : 30M x 0.32mm x 0.25µm



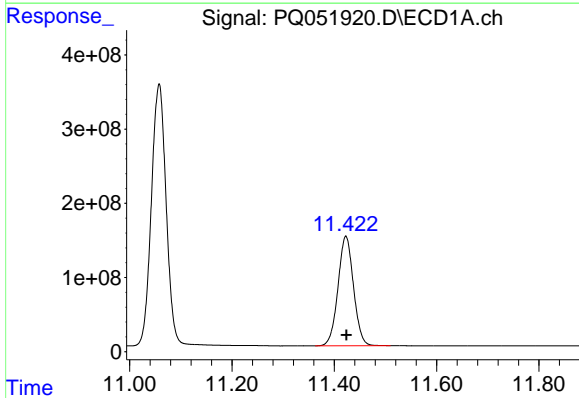


#1 Tetrachloro-m-xylene
 R.T.: 5.230 min
 Delta R.T.: -0.002 min
 Response: 984037537
 Conc: 38.70 ng/ml

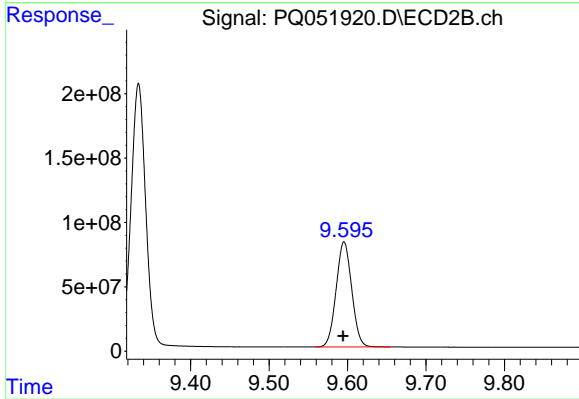
Instrument :
 ECD_Q
 ClientSampleId :



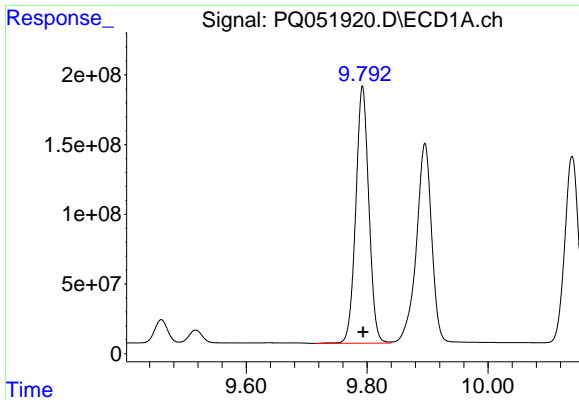
#1 Tetrachloro-m-xylene
 R.T.: 4.248 min
 Delta R.T.: -0.001 min
 Response: 324944056
 Conc: 39.16 ng/ml



#2 Decachlorobiphenyl
 R.T.: 11.423 min
 Delta R.T.: 0.000 min
 Response: 3100828005
 Conc: 78.65 ng/ml



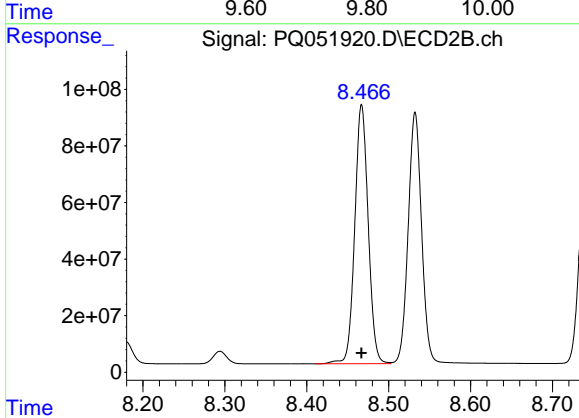
#2 Decachlorobiphenyl
 R.T.: 9.596 min
 Delta R.T.: 0.001 min
 Response: 1124997455
 Conc: 79.88 ng/ml



#41 AR-1268-1

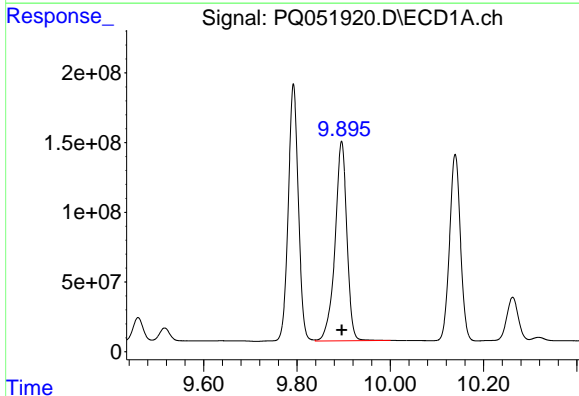
R.T.: 9.792 min
 Delta R.T.: 0.000 min
 Response: 2763440014
 Conc: 783.03 ng/ml

Instrument :
 ECD_Q
 ClientSampled :



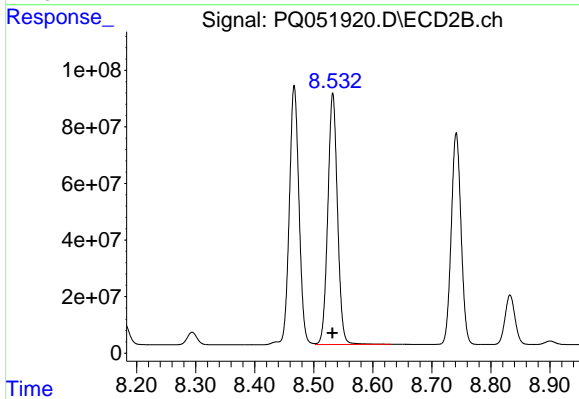
#41 AR-1268-1

R.T.: 8.467 min
 Delta R.T.: 0.000 min
 Response: 1042520205
 Conc: 756.36 ng/ml



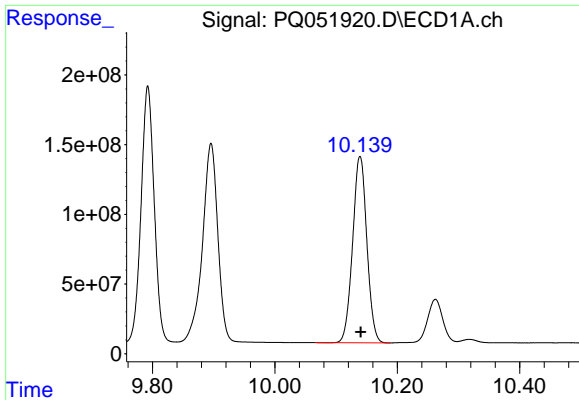
#42 AR-1268-2

R.T.: 9.896 min
 Delta R.T.: 0.000 min
 Response: 2521225642
 Conc: 783.02 ng/ml



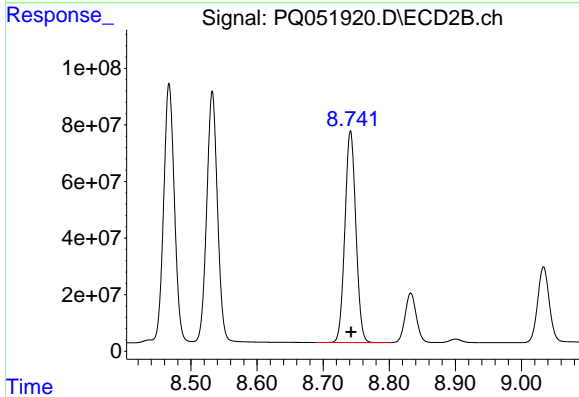
#42 AR-1268-2

R.T.: 8.532 min
 Delta R.T.: 0.000 min
 Response: 1010127610
 Conc: 790.51 ng/ml

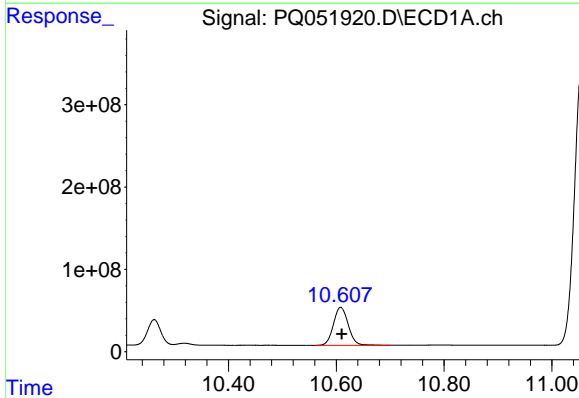


#43 AR-1268-3
 R.T.: 10.139 min
 Delta R.T.: -0.001 min
 Response: 2157844617
 Conc: 773.67 ng/ml

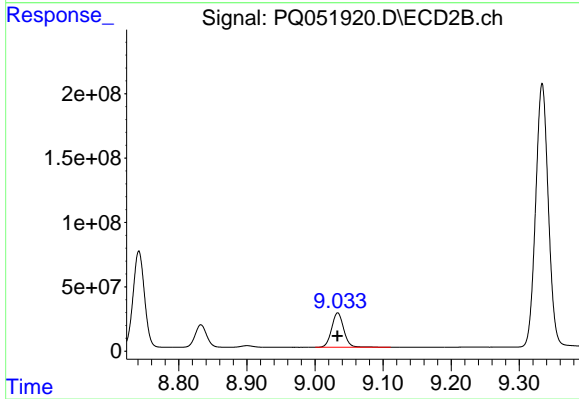
Instrument :
 ECD_Q
 ClientSampled :



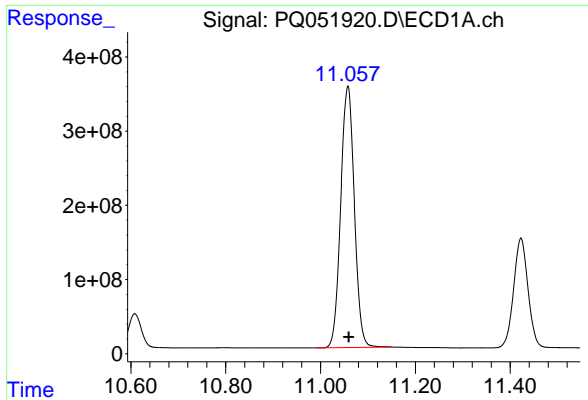
#43 AR-1268-3
 R.T.: 8.741 min
 Delta R.T.: 0.000 min
 Response: 860437638
 Conc: 779.96 ng/ml



#44 AR-1268-4
 R.T.: 10.608 min
 Delta R.T.: -0.002 min
 Response: 878874784
 Conc: 800.04 ng/ml



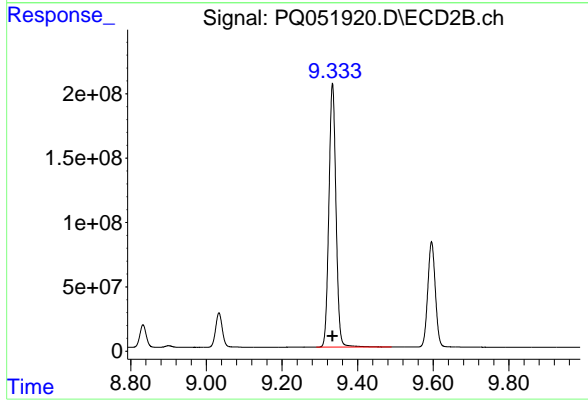
#44 AR-1268-4
 R.T.: 9.033 min
 Delta R.T.: 0.000 min
 Response: 331192147
 Conc: 814.60 ng/ml



#45 AR-1268-5

R.T.: 11.058 min
Delta R.T.: -0.002 min
Response: 7037824398
Conc: 809.94 ng/ml

Instrument :
ECD_Q
ClientSampleId :



#45 AR-1268-5

R.T.: 9.334 min
Delta R.T.: 0.000 min
Response: 2666896764
Conc: 806.06 ng/ml