

Data Path : Z:\pestpcbsrv\HPCHEM1\ECD\_Q\Data\PQ012825\  
 Data File : PQ069786.D  
 Signal(s) : Signal #1: ECD1A.ch Signal #2: ECD2B.ch  
 Acq On : 28 Jan 2025 12:01  
 Operator : YP\AJ  
 Sample : AR1660ICC500  
 Misc :  
 ALS Vial : 5 Sample Multiplier: 1

Instrument :  
 ECD\_Q  
 ClientSampleId :  
 AR1660ICC500

Integration File signal 1: autoint1.e  
 Integration File signal 2: autoint2.e  
 Quant Time: Jan 28 12:40:11 2025  
 Quant Method : Z:\pestpcbsrv\HPCHEM1\ECD\_Q\Method\PQ012825.M  
 Quant Title : GC EXTRACTABLES  
 QLast Update : Tue Jan 28 12:39:39 2025  
 Response via : Initial Calibration  
 Integrator: ChemStation

Volume Inj. : 2 µl  
 Signal #1 Phase : ZB-MR1 Signal #2 Phase: ZB-MR2  
 Signal #1 Info : 30Mx0.32mmx 0.50µ Signal #2 Info : 30M x 0.32mm x 0.25µm

Compound	RT#1	RT#2	Resp#1	Resp#2	ng/ml	ng/ml
-----						
System Monitoring Compounds						
1) SA Tetrachlo...	3.415	2.787	431.8E6	417.5E6	50.000	50.000
2) SA Decachlor...	8.525	7.561	256.2E6	398.4E6	50.000	50.000
Target Compounds						
3) L1 AR-1016-1	4.499	3.791	115.6E6	114.5E6	500.000	500.000
4) L1 AR-1016-2	4.518	3.807	195.6E6	180.8E6	500.000	500.000
5) L1 AR-1016-3	4.576	3.968	126.8E6	103.5E6	500.000	500.000
6) L1 AR-1016-4	4.666	4.016	101.6E6	92620549	500.000	500.000
7) L1 AR-1016-5	4.950	4.212	99864998	109.4E6	500.000	500.000
31) L7 AR-1260-1	6.042	5.208	172.2E6	192.2E6	500.000	500.000
32) L7 AR-1260-2	6.298	5.397	189.0E6	224.1E6	500.000	500.000
33) L7 AR-1260-3	6.649	5.539	152.2E6	220.1E6	500.000	500.000
34) L7 AR-1260-4	6.863	6.001	165.0E6	199.1E6	500.000	500.000
35) L7 AR-1260-5	7.170	6.246	297.4E6	431.8E6	500.000	500.000

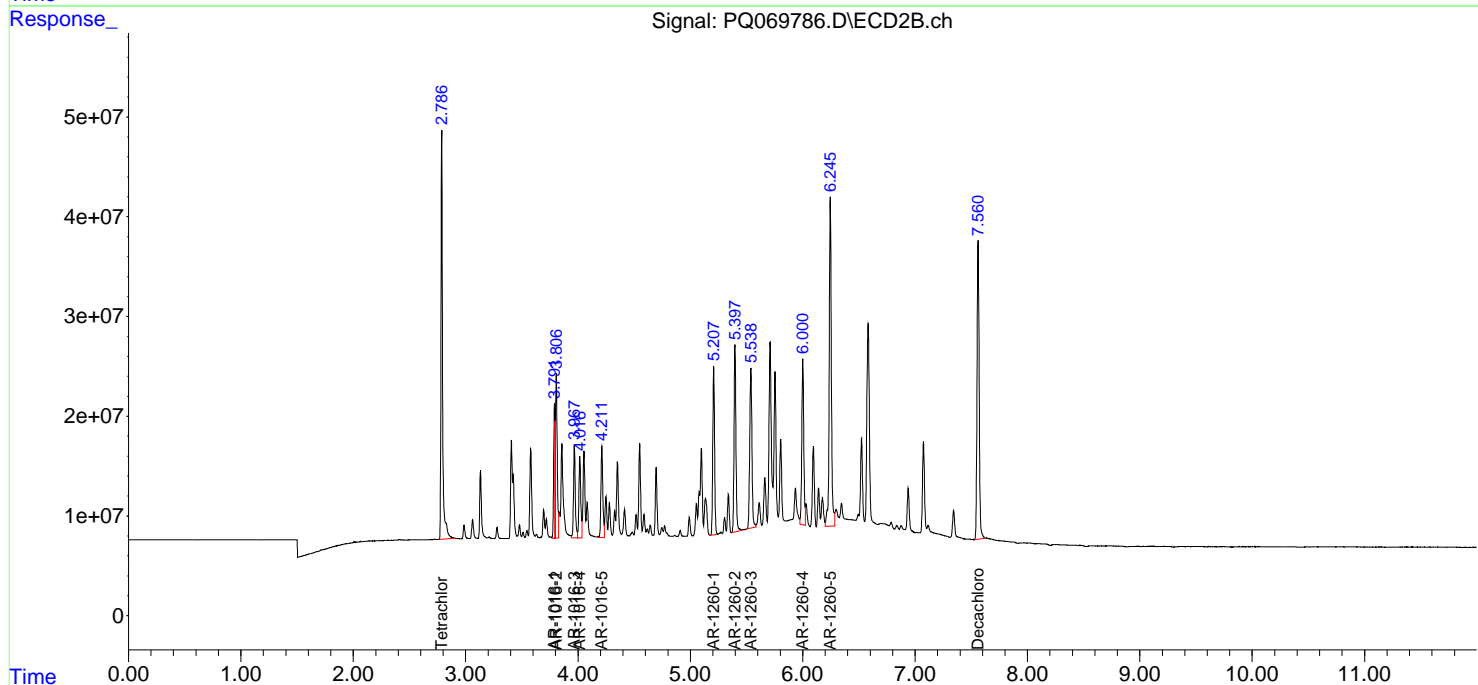
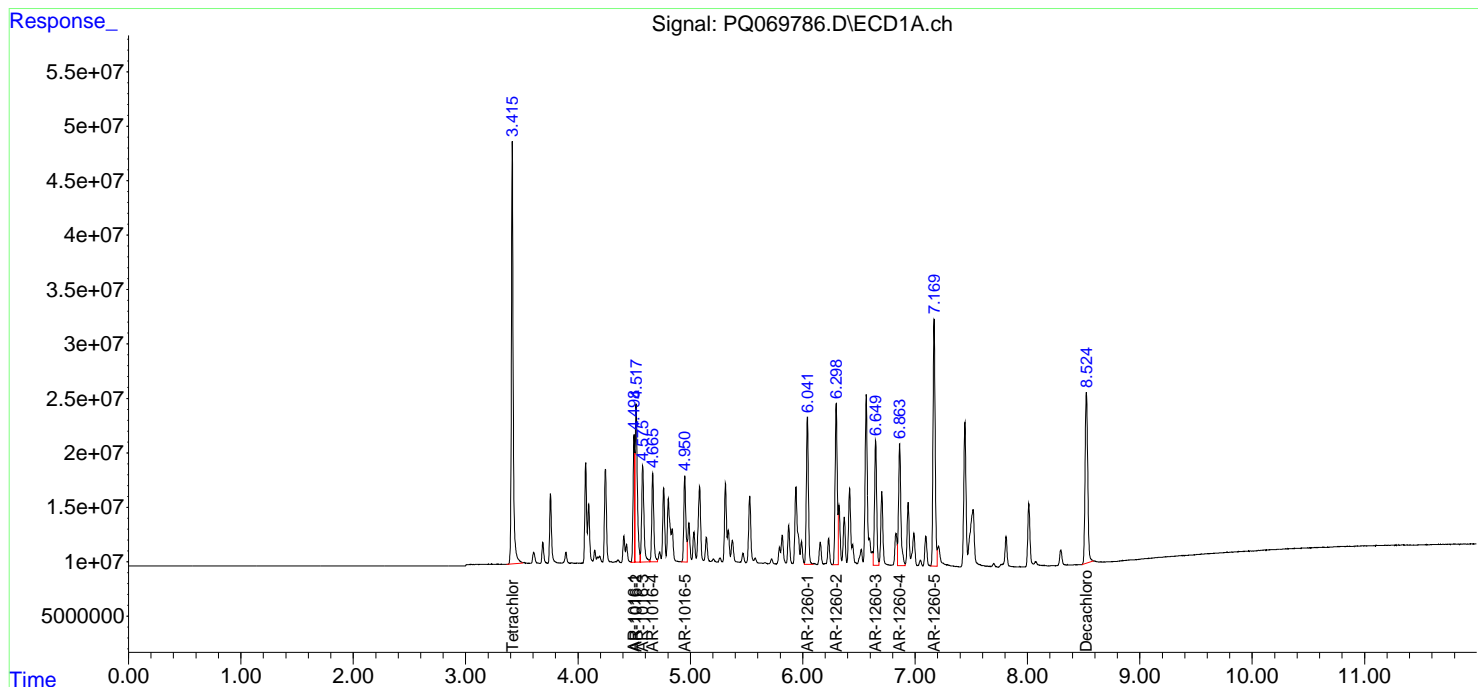
(f)=RT Delta > 1/2 Window (#)=Amounts differ by > 25% (m)=manual int.

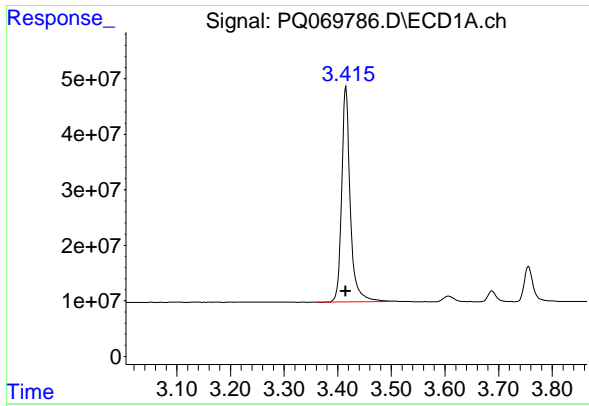
Data Path : Z:\pestpcbsrv\HPCHEM1\ECD\_Q\Data\PQ012825\  
 Data File : PQ069786.D  
 Signal(s) : Signal #1: ECD1A.ch Signal #2: ECD2B.ch  
 Acq On : 28 Jan 2025 12:01  
 Operator : YP\AJ  
 Sample : AR1660ICC500  
 Misc :  
 ALS Vial : 5 Sample Multiplier: 1

Instrument :  
 ECD\_Q  
 ClientSampleId :  
 AR1660ICC500

Integration File signal 1: autoint1.e  
 Integration File signal 2: autoint2.e  
 Quant Time: Jan 28 12:40:11 2025  
 Quant Method : Z:\pestpcbsrv\HPCHEM1\ECD\_Q\Method\PQ012825.M  
 Quant Title : GC EXTRACTABLES  
 QLast Update : Tue Jan 28 12:39:39 2025  
 Response via : Initial Calibration  
 Integrator: ChemStation

Volume Inj. : 2 µl  
 Signal #1 Phase : ZB-MR1 Signal #2 Phase: ZB-MR2  
 Signal #1 Info : 30Mx0.32mmx 0.50µ Signal #2 Info : 30M x 0.32mm x 0.25µm

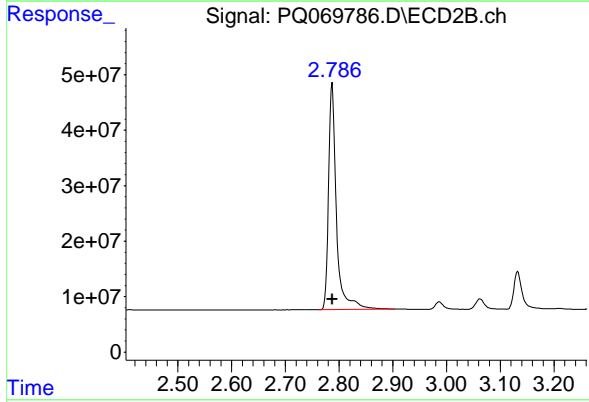




#1 Tetrachloro-m-xylene

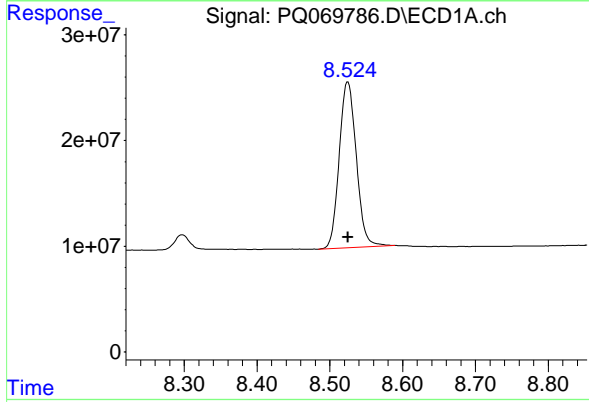
R.T.: 3.415 min  
 Delta R.T.: 0.000 min  
 Response: 431766692  
 Conc: 50.00 ng/ml

Instrument : ECD\_Q  
 ClientSampleId : AR1660ICC500



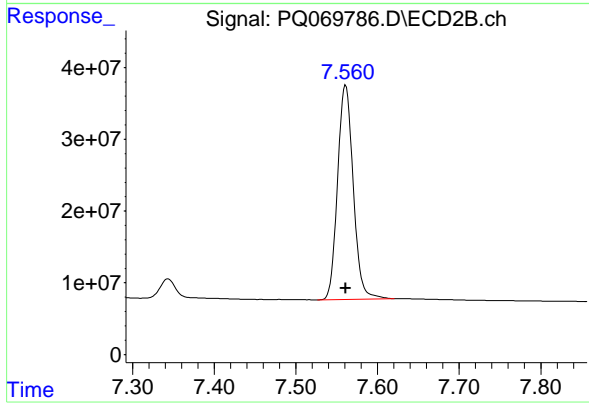
#1 Tetrachloro-m-xylene

R.T.: 2.787 min  
 Delta R.T.: 0.000 min  
 Response: 417540014  
 Conc: 50.00 ng/ml



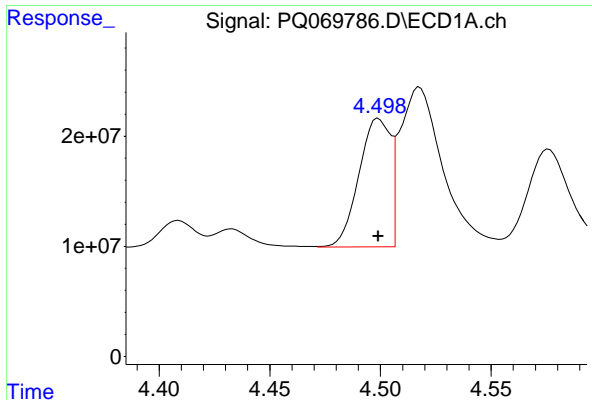
#2 Decachlorobiphenyl

R.T.: 8.525 min  
 Delta R.T.: 0.000 min  
 Response: 256214984  
 Conc: 50.00 ng/ml



#2 Decachlorobiphenyl

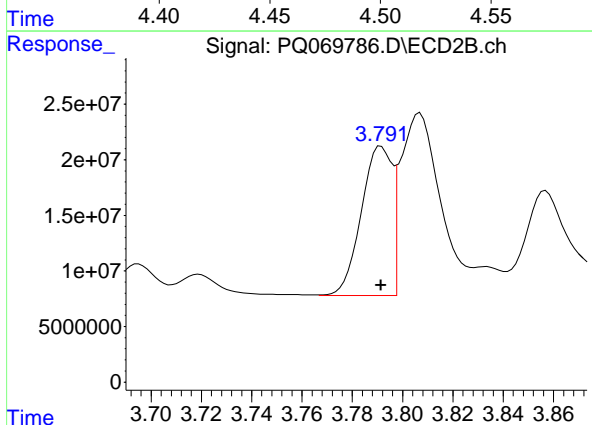
R.T.: 7.561 min  
 Delta R.T.: 0.000 min  
 Response: 398429082  
 Conc: 50.00 ng/ml



#3 AR-1016-1

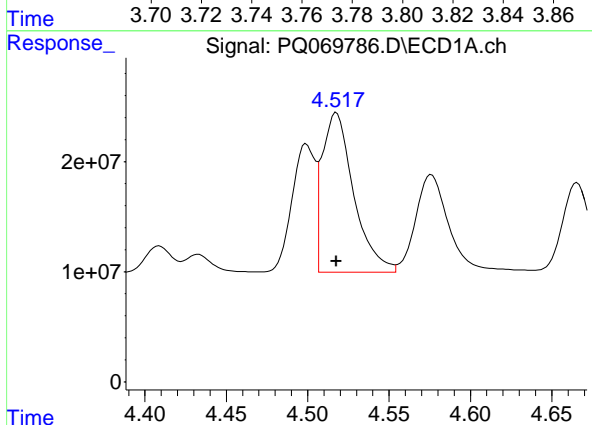
R.T.: 4.499 min  
 Delta R.T.: 0.000 min  
 Response: 115607440  
 Conc: 500.00 ng/ml

Instrument :  
 ECD\_Q  
 ClientSampleId :  
 AR1660ICC500



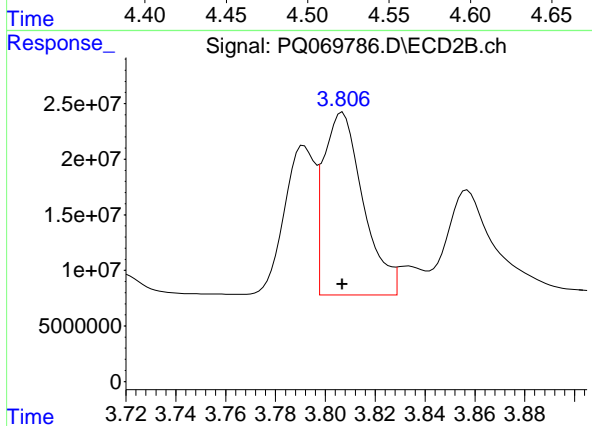
#3 AR-1016-1

R.T.: 3.791 min  
 Delta R.T.: 0.000 min  
 Response: 114502846  
 Conc: 500.00 ng/ml



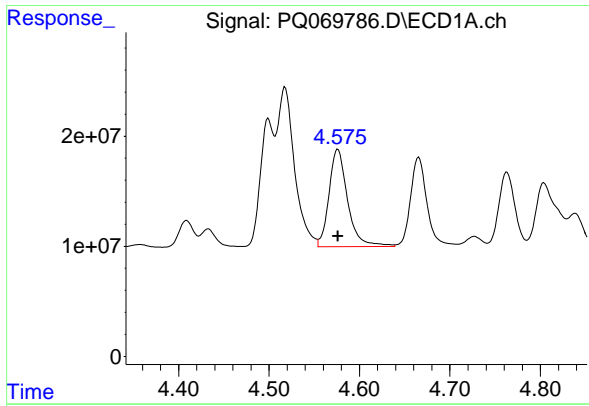
#4 AR-1016-2

R.T.: 4.518 min  
 Delta R.T.: 0.000 min  
 Response: 195643385  
 Conc: 500.00 ng/ml



#4 AR-1016-2

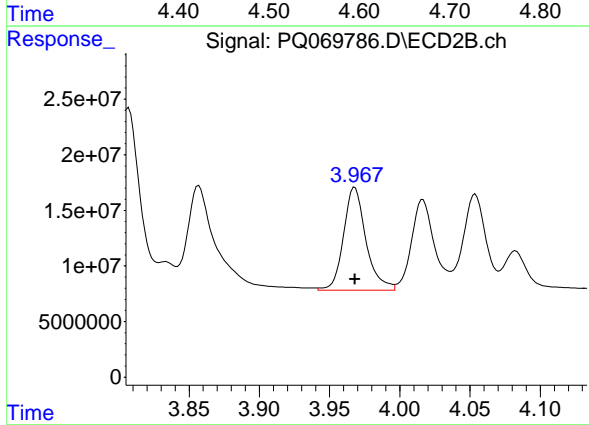
R.T.: 3.807 min  
 Delta R.T.: 0.000 min  
 Response: 180781808  
 Conc: 500.00 ng/ml



#5 AR-1016-3

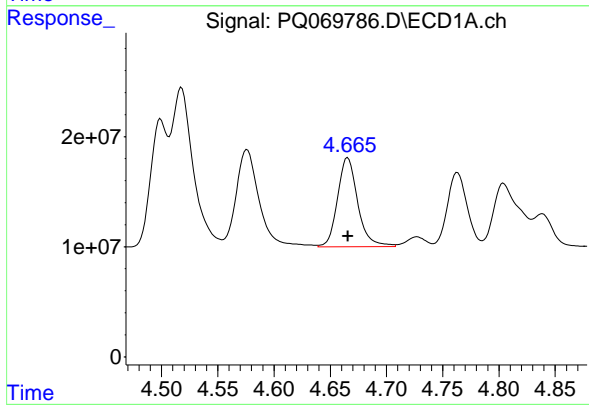
R.T.: 4.576 min  
 Delta R.T.: 0.000 min  
 Response: 126822943  
 Conc: 500.00 ng/ml

Instrument :  
 ECD\_Q  
 ClientSampleId :  
 AR1660ICC500



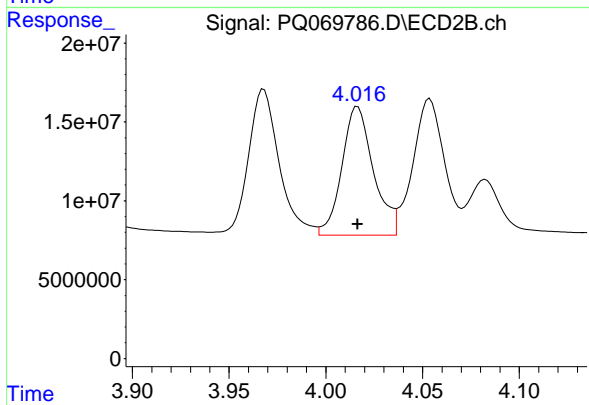
#5 AR-1016-3

R.T.: 3.968 min  
 Delta R.T.: 0.000 min  
 Response: 103476509  
 Conc: 500.00 ng/ml



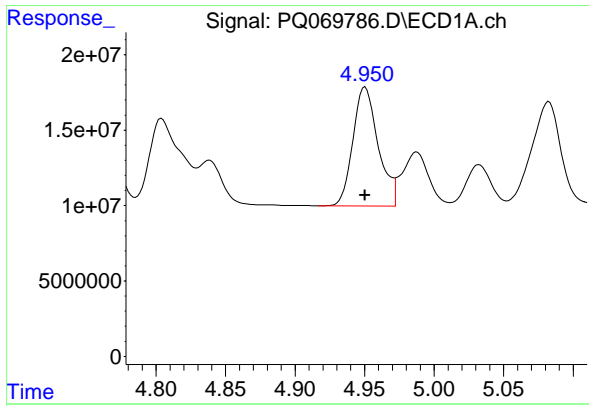
#6 AR-1016-4

R.T.: 4.666 min  
 Delta R.T.: 0.000 min  
 Response: 101622322  
 Conc: 500.00 ng/ml



#6 AR-1016-4

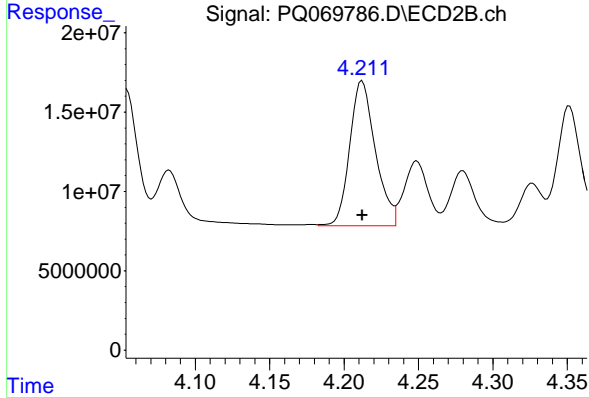
R.T.: 4.016 min  
 Delta R.T.: 0.000 min  
 Response: 92620549  
 Conc: 500.00 ng/ml



#7 AR-1016-5

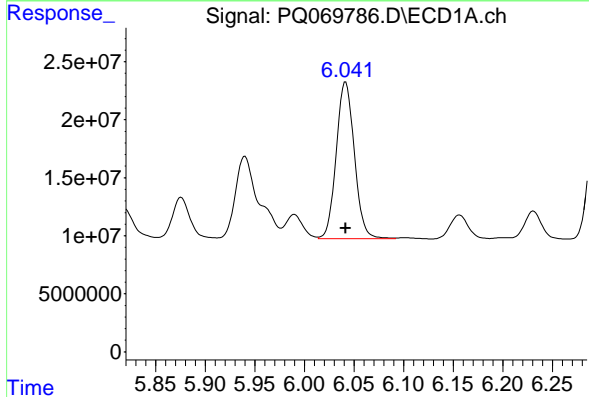
R.T.: 4.950 min  
 Delta R.T.: 0.000 min  
 Response: 99864998  
 Conc: 500.00 ng/ml

Instrument :  
 ECD\_Q  
 ClientSampleId :  
 AR1660ICC500



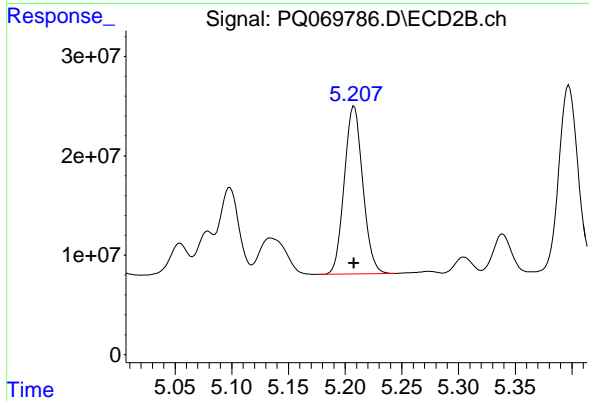
#7 AR-1016-5

R.T.: 4.212 min  
 Delta R.T.: 0.000 min  
 Response: 109447984  
 Conc: 500.00 ng/ml



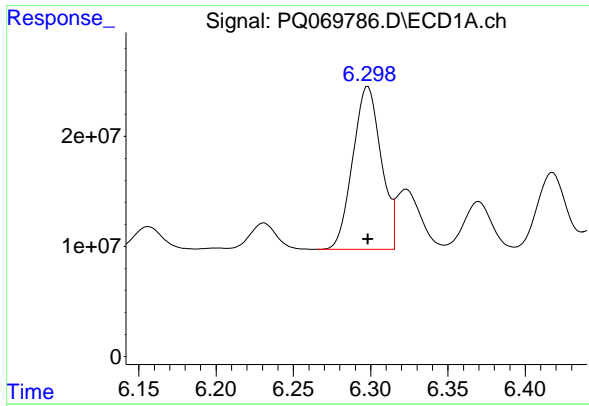
#31 AR-1260-1

R.T.: 6.042 min  
 Delta R.T.: 0.000 min  
 Response: 172215480  
 Conc: 500.00 ng/ml



#31 AR-1260-1

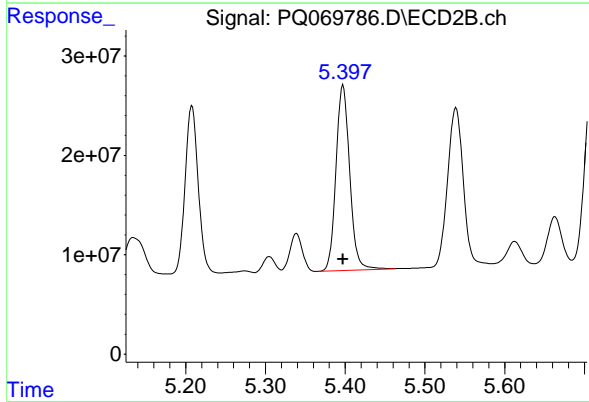
R.T.: 5.208 min  
 Delta R.T.: 0.000 min  
 Response: 192173299  
 Conc: 500.00 ng/ml



#32 AR-1260-2

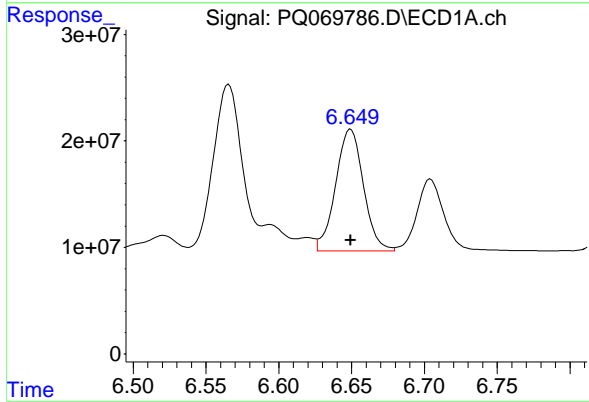
R.T.: 6.298 min  
 Delta R.T.: 0.000 min  
 Response: 188984392  
 Conc: 500.00 ng/ml

Instrument :  
 ECD\_Q  
 ClientSampleId :  
 AR1660ICC500



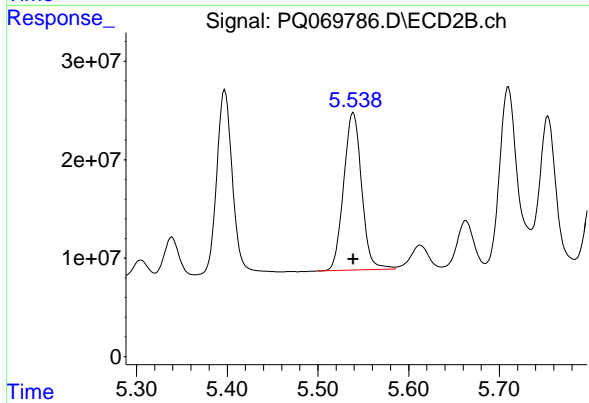
#32 AR-1260-2

R.T.: 5.397 min  
 Delta R.T.: 0.000 min  
 Response: 224068812  
 Conc: 500.00 ng/ml



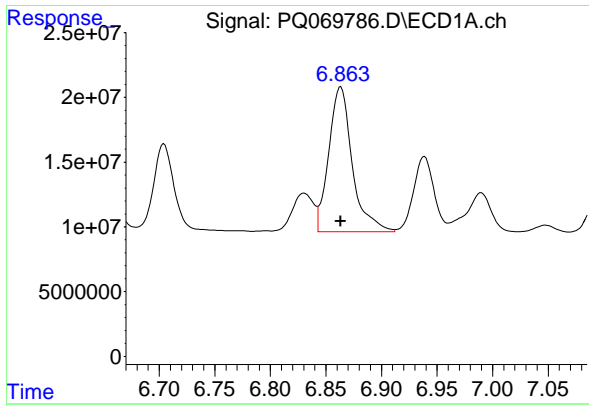
#33 AR-1260-3

R.T.: 6.649 min  
 Delta R.T.: 0.000 min  
 Response: 152189682  
 Conc: 500.00 ng/ml



#33 AR-1260-3

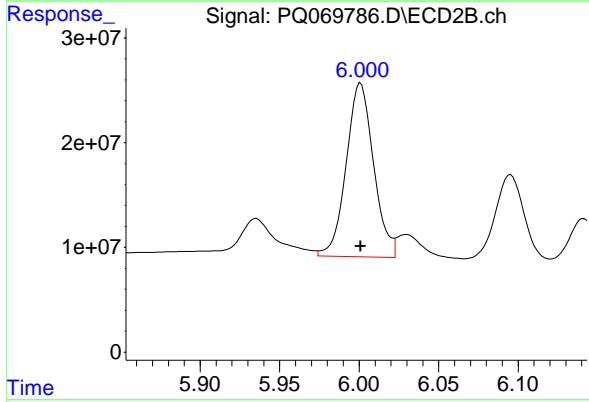
R.T.: 5.539 min  
 Delta R.T.: 0.000 min  
 Response: 220069262  
 Conc: 500.00 ng/ml



#34 AR-1260-4

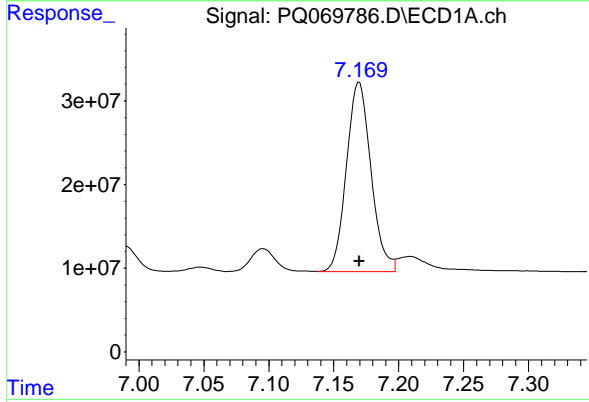
R.T.: 6.863 min  
 Delta R.T.: 0.000 min  
 Response: 164991682  
 Conc: 500.00 ng/ml

Instrument :  
 ECD\_Q  
 ClientSampleId :  
 AR1660ICC500



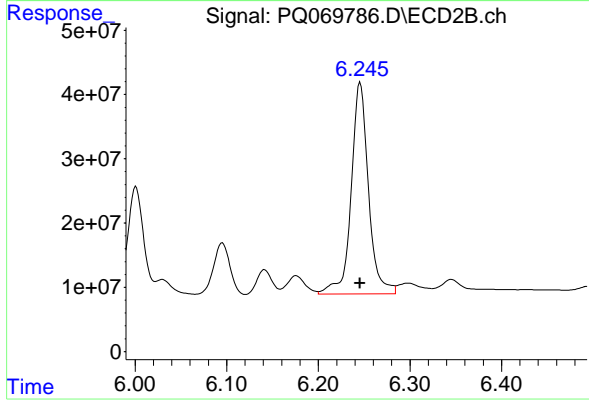
#34 AR-1260-4

R.T.: 6.001 min  
 Delta R.T.: 0.000 min  
 Response: 199058348  
 Conc: 500.00 ng/ml



#35 AR-1260-5

R.T.: 7.170 min  
 Delta R.T.: 0.000 min  
 Response: 297434090  
 Conc: 500.00 ng/ml



#35 AR-1260-5

R.T.: 6.246 min  
 Delta R.T.: 0.000 min  
 Response: 431826127  
 Conc: 500.00 ng/ml