

Data Path : Z:\pestpcbsrv\HPCHEM1\ECD_Q\Data\PQ012825\
 Data File : PQ069790.D
 Signal(s) : Signal #1: ECD1A.ch Signal #2: ECD2B.ch
 Acq On : 28 Jan 2025 13:03
 Operator : YP\AJ
 Sample : AR1232ICC500
 Misc :
 ALS Vial : 9 Sample Multiplier: 1

Instrument :
 ECD_Q
 ClientSampleId :
 AR1232ICC500

Integration File signal 1: autoint1.e
 Integration File signal 2: autoint2.e
 Quant Time: Jan 28 14:23:37 2025
 Quant Method : Z:\pestpcbsrv\HPCHEM1\ECD_Q\Method\PQ012825.M
 Quant Title : GC EXTRACTABLES
 QLast Update : Tue Jan 28 14:23:27 2025
 Response via : Initial Calibration
 Integrator: ChemStation

Volume Inj. : 2 µl
 Signal #1 Phase : ZB-MR1 Signal #2 Phase: ZB-MR2
 Signal #1 Info : 30Mx0.32mmx 0.50µ Signal #2 Info : 30M x 0.32mm x 0.25µm

| Compound | RT#1 | RT#2 | Resp#1 | Resp#2 | ng/ml | ng/ml |
|-----------------------------|-------|-------|----------|----------|---------|---------|
| ----- | | | | | | |
| System Monitoring Compounds | | | | | | |
| 1) SA Tetrachlo... | 3.415 | 2.787 | 409.5E6 | 365.6E6 | 50.000 | 50.000 |
| 2) SA Decachlor... | 8.525 | 7.561 | 227.2E6 | 354.9E6 | 50.000 | 50.000 |
| Target Compounds | | | | | | |
| 11) L3 AR-1232-1 | 3.755 | 3.132 | 89438239 | 88018940 | 500.000 | 500.000 |
| 12) L3 AR-1232-2 | 4.244 | 3.807 | 49938607 | 84999611 | 500.000 | 500.000 |
| 13) L3 AR-1232-3 | 4.517 | 3.967 | 90766544 | 47415598 | 500.000 | 500.000 |
| 14) L3 AR-1232-4 | 4.665 | 4.054 | 46882018 | 40686391 | 500.000 | 500.000 |
| 15) L3 AR-1232-5 | 4.804 | 4.212 | 37574040 | 46084500 | 500.000 | 500.000 |
| ----- | | | | | | |

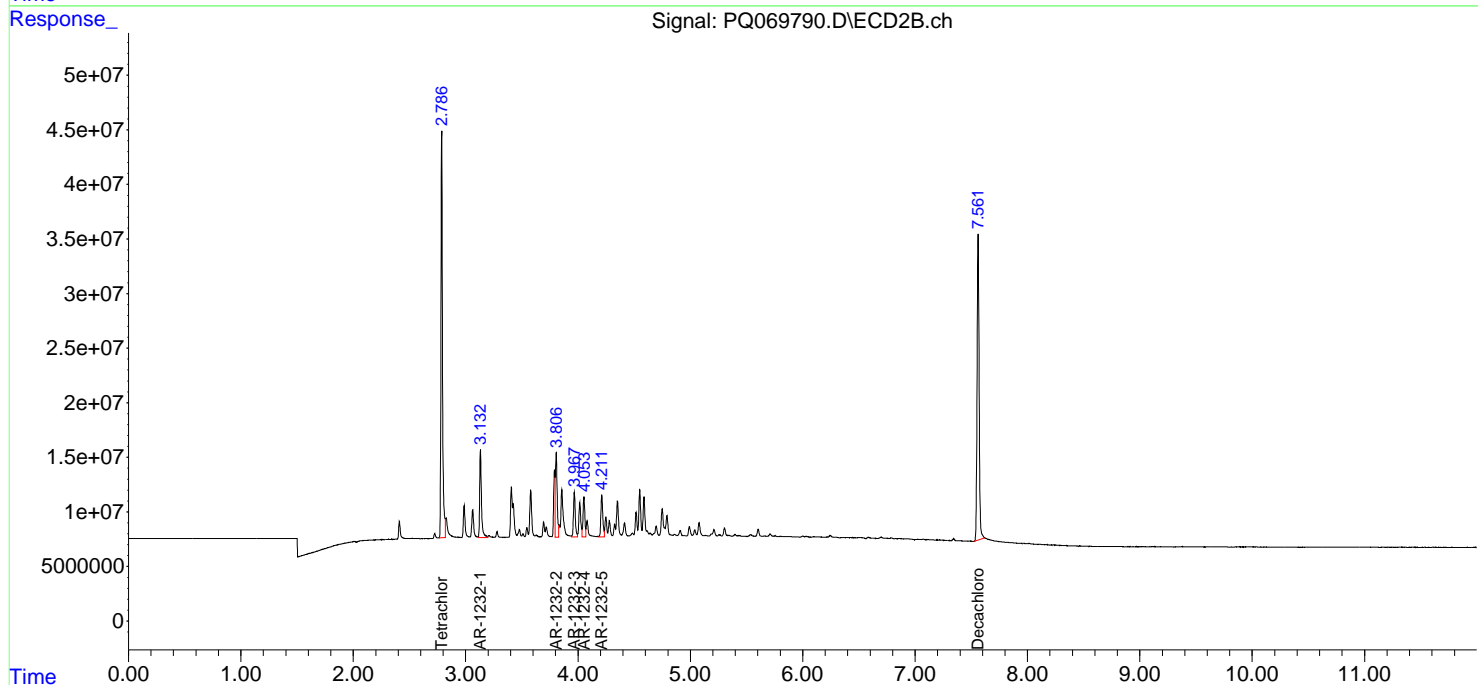
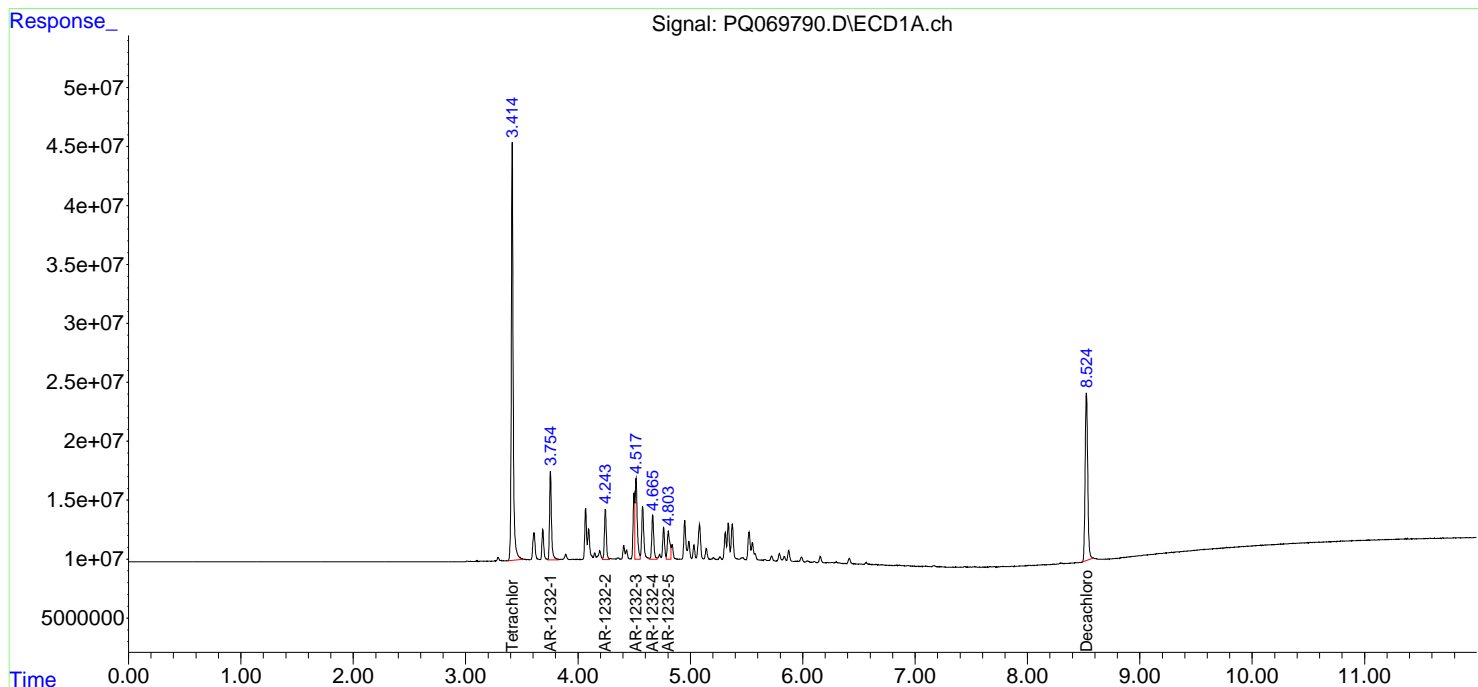
(f)=RT Delta > 1/2 Window (#)=Amounts differ by > 25% (m)=manual int.

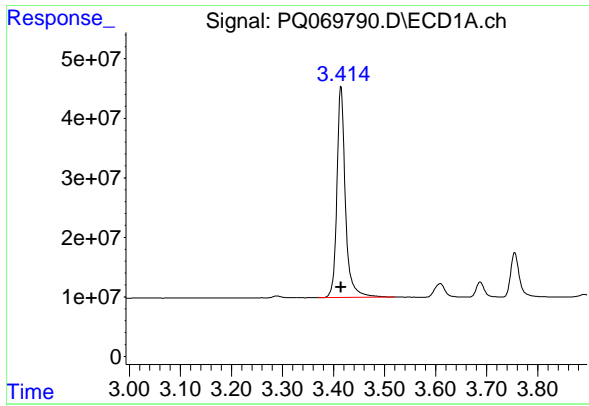
Data Path : Z:\pestpcbsrv\HPCHEM1\ECD_Q\Data\PQ012825\
 Data File : PQ069790.D
 Signal(s) : Signal #1: ECD1A.ch Signal #2: ECD2B.ch
 Acq On : 28 Jan 2025 13:03
 Operator : YP\AJ
 Sample : AR1232ICC500
 Misc :
 ALS Vial : 9 Sample Multiplier: 1

Instrument :
 ECD_Q
 ClientSampleId :
 AR1232ICC500

Integration File signal 1: autoint1.e
 Integration File signal 2: autoint2.e
 Quant Time: Jan 28 14:23:37 2025
 Quant Method : Z:\pestpcbsrv\HPCHEM1\ECD_Q\Method\PQ012825.M
 Quant Title : GC EXTRACTABLES
 QLast Update : Tue Jan 28 14:23:27 2025
 Response via : Initial Calibration
 Integrator: ChemStation

Volume Inj. : 2 µl
 Signal #1 Phase : ZB-MR1 Signal #2 Phase: ZB-MR2
 Signal #1 Info : 30Mx0.32mmx 0.50µm Signal #2 Info : 30M x 0.32mm x 0.25µm

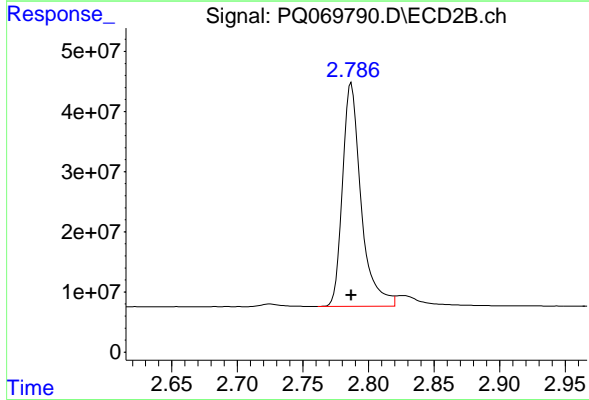




#1 Tetrachloro-m-xylene

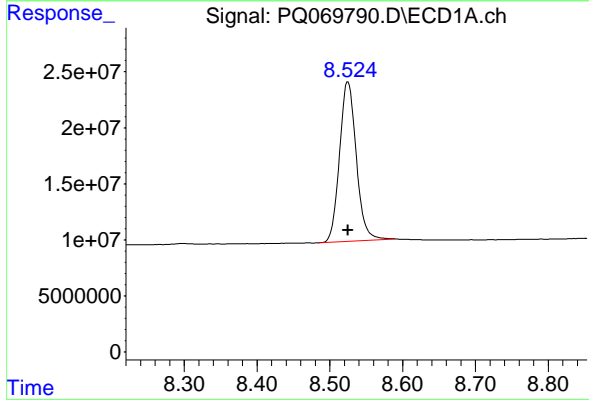
R.T.: 3.415 min
 Delta R.T.: 0.000 min
 Response: 409459243
 Conc: 50.00 ng/ml

Instrument :
 ECD_Q
 ClientSampleId :
 AR1232ICC500



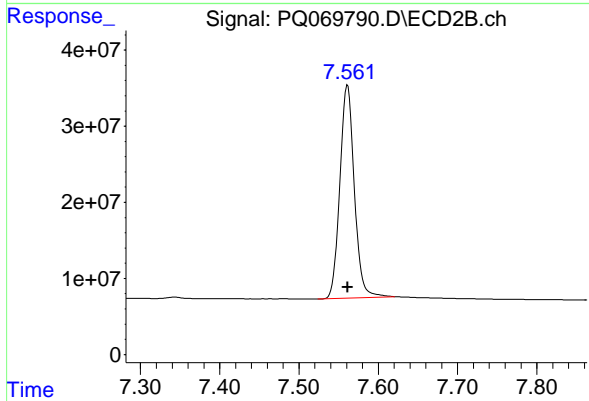
#1 Tetrachloro-m-xylene

R.T.: 2.787 min
 Delta R.T.: 0.000 min
 Response: 365604618
 Conc: 50.00 ng/ml



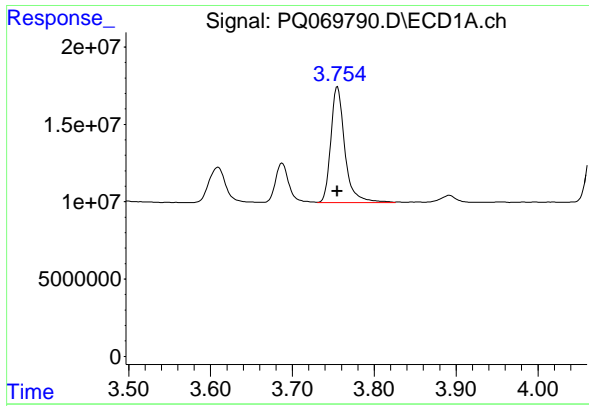
#2 Decachlorobiphenyl

R.T.: 8.525 min
 Delta R.T.: 0.000 min
 Response: 227231517
 Conc: 50.00 ng/ml



#2 Decachlorobiphenyl

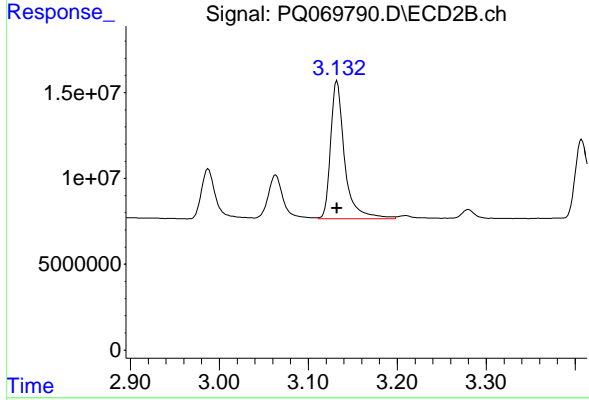
R.T.: 7.561 min
 Delta R.T.: 0.000 min
 Response: 354939122
 Conc: 50.00 ng/ml



#11 AR-1232-1

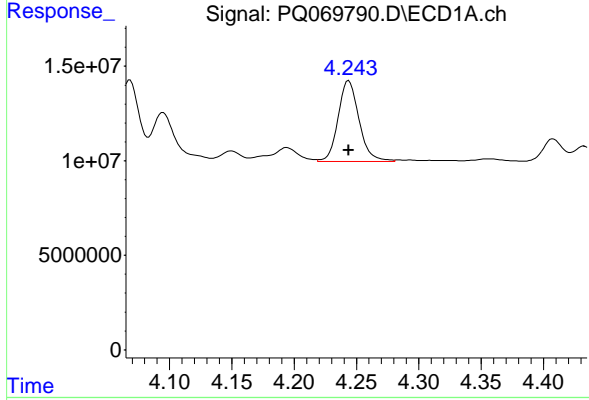
R.T.: 3.755 min
 Delta R.T.: 0.000 min
 Response: 89438239
 Conc: 500.00 ng/ml

Instrument :
 ECD_Q
 ClientSampleId :
 AR1232ICC500



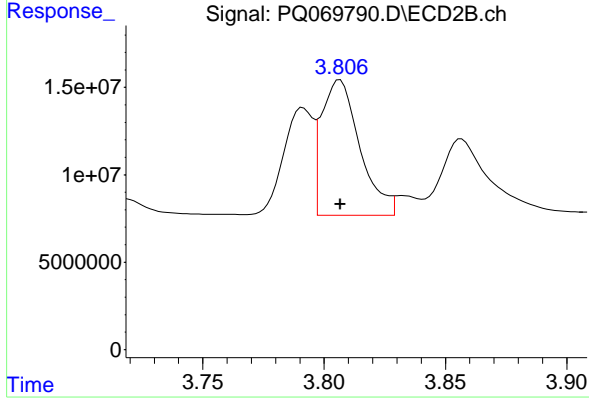
#11 AR-1232-1

R.T.: 3.132 min
 Delta R.T.: 0.000 min
 Response: 88018940
 Conc: 500.00 ng/ml



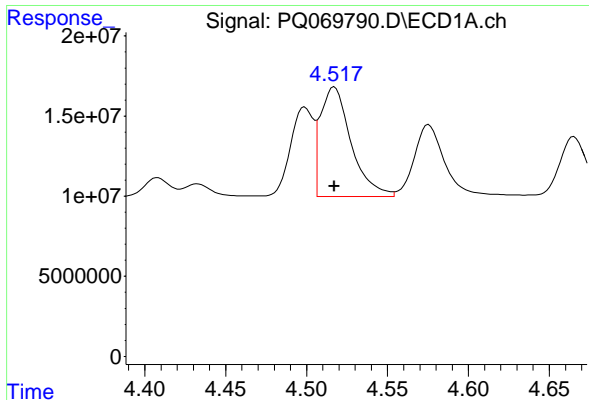
#12 AR-1232-2

R.T.: 4.244 min
 Delta R.T.: 0.000 min
 Response: 49938607
 Conc: 500.00 ng/ml



#12 AR-1232-2

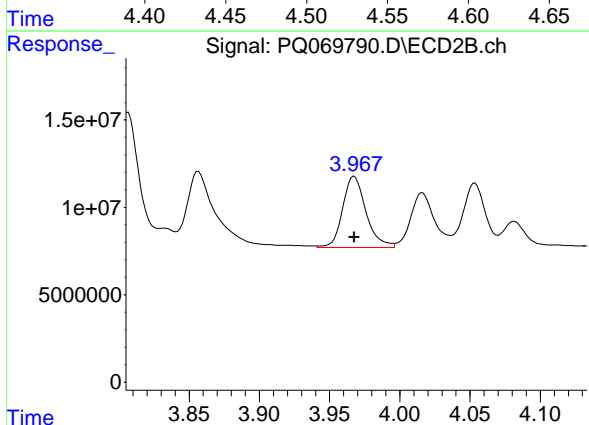
R.T.: 3.807 min
 Delta R.T.: 0.000 min
 Response: 84999611
 Conc: 500.00 ng/ml



#13 AR-1232-3

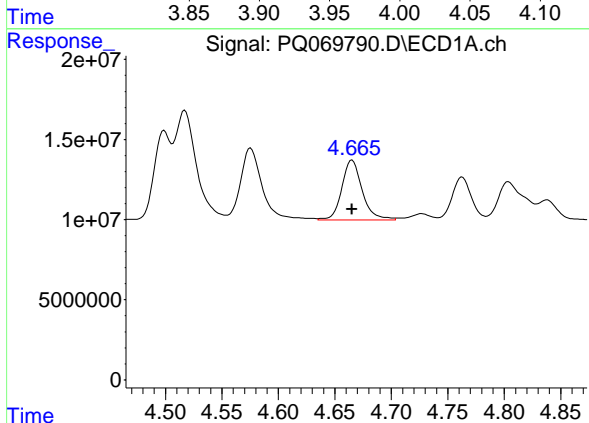
R.T.: 4.517 min
 Delta R.T.: 0.000 min
 Response: 90766544
 Conc: 500.00 ng/ml

Instrument : ECD_Q
 ClientSampleId : AR1232ICC500



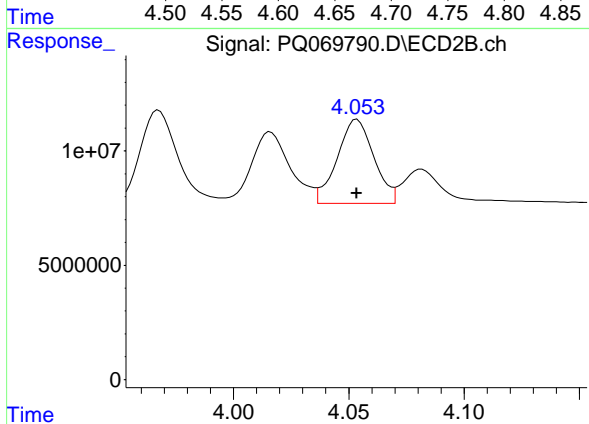
#13 AR-1232-3

R.T.: 3.967 min
 Delta R.T.: 0.000 min
 Response: 47415598
 Conc: 500.00 ng/ml



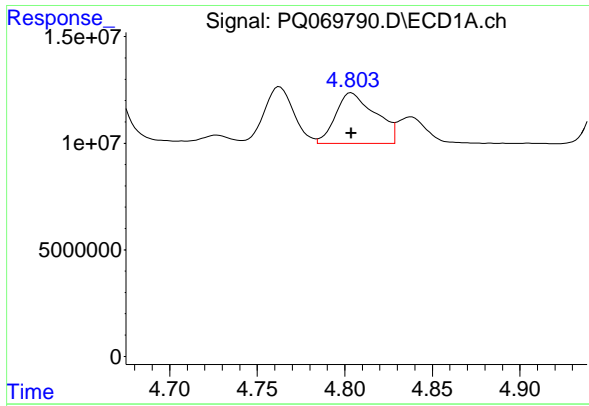
#14 AR-1232-4

R.T.: 4.665 min
 Delta R.T.: 0.000 min
 Response: 46882018
 Conc: 500.00 ng/ml



#14 AR-1232-4

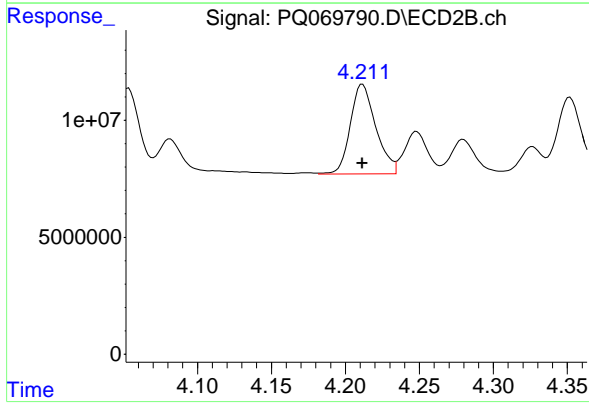
R.T.: 4.054 min
 Delta R.T.: 0.000 min
 Response: 40686391
 Conc: 500.00 ng/ml



#15 AR-1232-5

R.T.: 4.804 min
Delta R.T.: 0.000 min
Response: 37574040
Conc: 500.00 ng/ml

Instrument :
ECD_Q
ClientSampleId :
AR1232ICC500



#15 AR-1232-5

R.T.: 4.212 min
Delta R.T.: 0.000 min
Response: 46084500
Conc: 500.00 ng/ml