

Data Path : Z:\pestpcbsrv\HPCHEM1\ECD_Q\Data\PQ012825\
 Data File : PQ069803.D
 Signal(s) : Signal #1: ECD1A.ch Signal #2: ECD2B.ch
 Acq On : 28 Jan 2025 16:22
 Operator : YP\AJ
 Sample : Q1168-01
 Misc : AR1242 LOD 25 PPB
 ALS Vial : 8 Sample Multiplier: 1

Instrument :
 ECD_Q
ClientSampleId :
 LOD-MDL-SOIL-01-QT1-2025

Manual Integrations
APPROVED

Reviewed By :Yogesh Patel 01/29/2025
 Supervised By :Ankita Jodhani 01/29/2025

Integration File signal 1: autoint1.e
 Integration File signal 2: autoint2.e
 Quant Time: Jan 28 22:46:43 2025
 Quant Method : Z:\pestpcbsrv\HPCHEM1\ECD_Q\Method\PQ012825.M
 Quant Title : GC EXTRACTABLES
 QLast Update : Tue Jan 28 14:44:45 2025
 Response via : Initial Calibration
 Integrator: ChemStation

Volume Inj. : 2 µl
 Signal #1 Phase : ZB-MR1 Signal #2 Phase: ZB-MR2
 Signal #1 Info : 30Mx0.32mmx 0.50µ Signal #2 Info : 30M x 0.32mm x 0.25µm

Compound	RT#1	RT#2	Resp#1	Resp#2	ng/ml	ng/ml

System Monitoring Compounds						
1) SA Tetrachlo...	3.414	2.787	152.4E6	130.5E6	18.859	17.175
2) SA Decachlor...	8.525	7.560	95526273	144.3E6	20.539	18.749
Target Compounds						
16) L4 AR-1242-1	4.497	3.791	5620845	5398439	28.158	28.769
17) L4 AR-1242-2	4.516	3.807	8936193	8161514	28.130	28.360
18) L4 AR-1242-3	4.574	3.968	6307679	4841111	30.549	29.047
19) L4 AR-1242-4	4.663	4.053	4754418	4775434	28.337	30.407
20) L4 AR-1242-5	5.370	4.549	3148857	5058414	18.385	26.306m#

(f)=RT Delta > 1/2 Window (#)=Amounts differ by > 25% (m)=manual int.

Data Path : Z:\pestpcbsrv\HPCHEM1\ECD_Q\Data\PQ012825\
 Data File : PQ069803.D
 Signal(s) : Signal #1: ECD1A.ch Signal #2: ECD2B.ch
 Acq On : 28 Jan 2025 16:22
 Operator : YP\AJ
 Sample : Q1168-01
 Misc : AR1242 LOD 25 PPB
 ALS Vial : 8 Sample Multiplier: 1

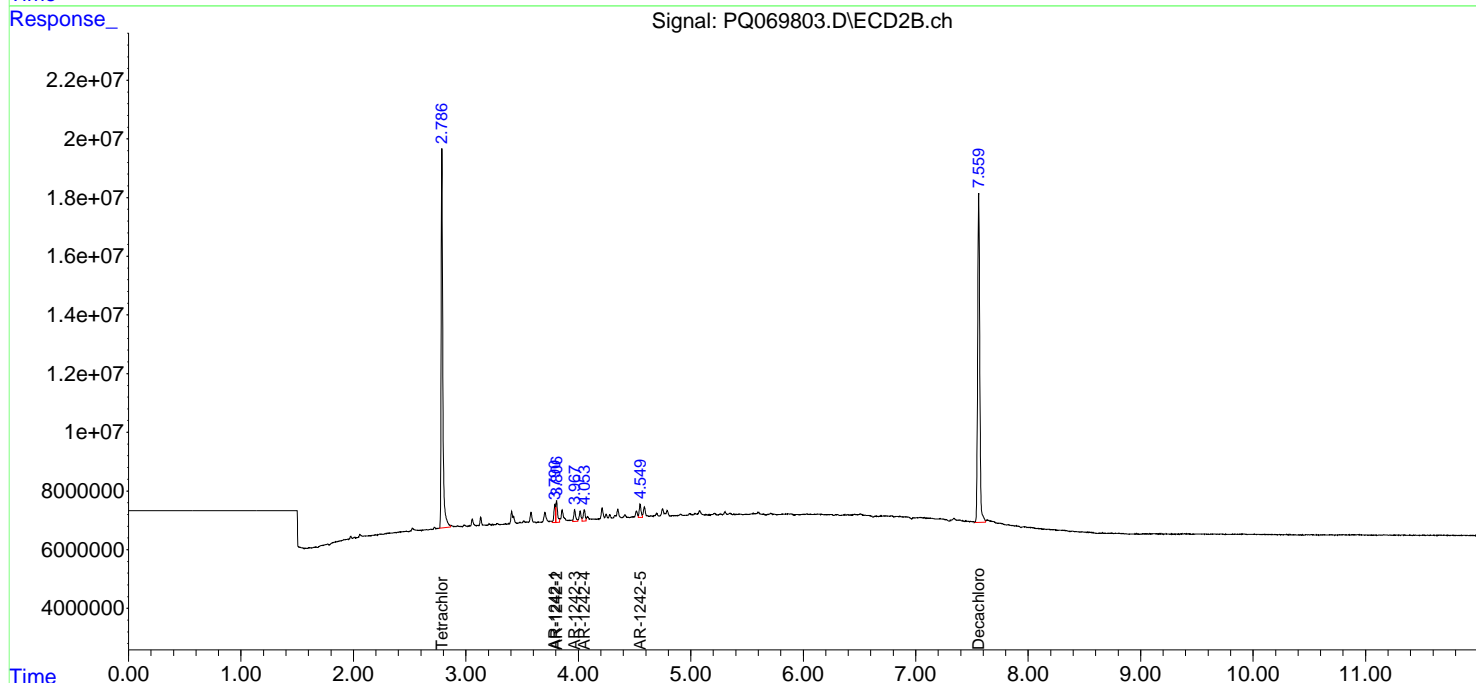
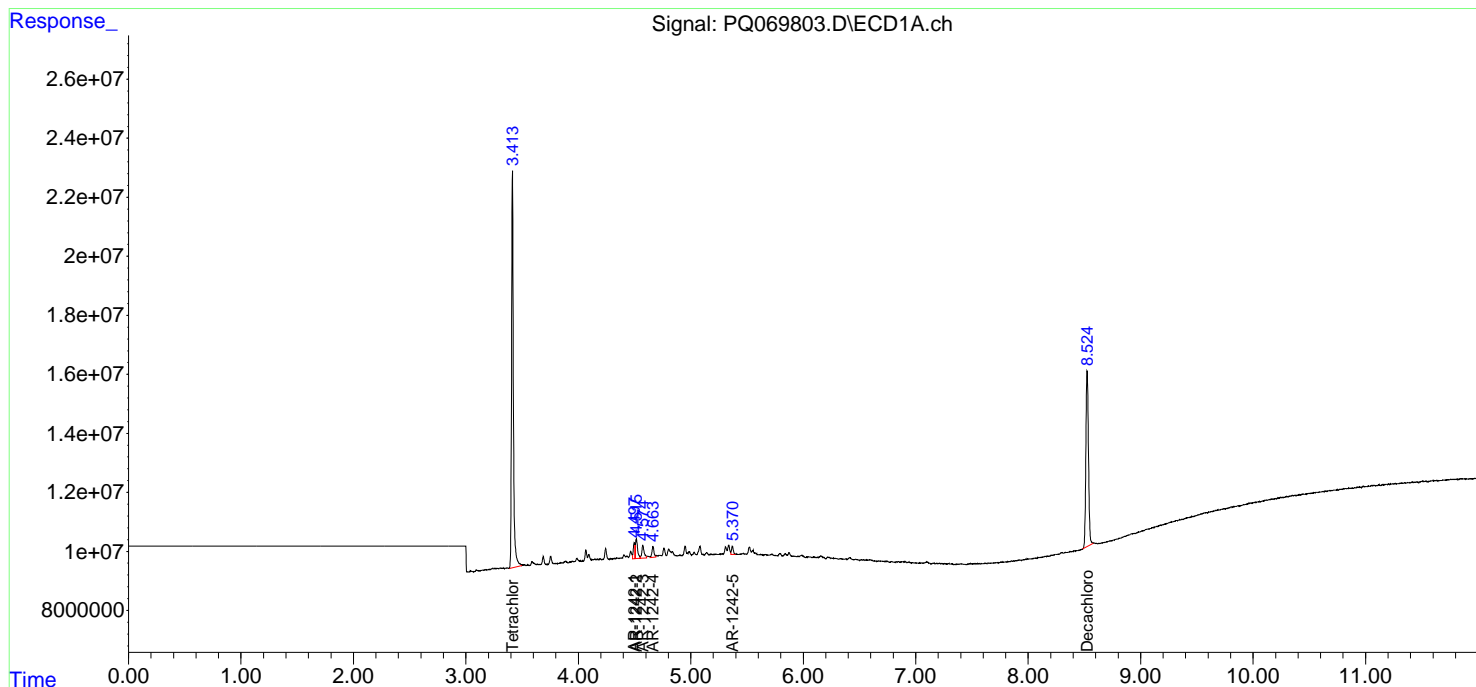
Instrument :
 ECD_Q
ClientSampleId :
 LOD-MDL-SOIL-01-QT1-2025

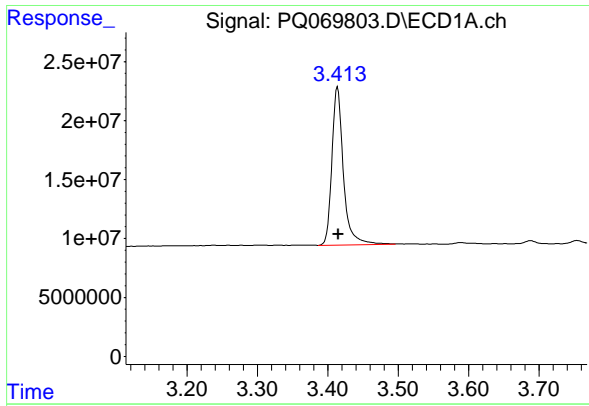
Manual Integrations
APPROVED

Reviewed By :Yogesh Patel 01/29/2025
 Supervised By :Ankita Jodhani 01/29/2025

Integration File signal 1: autoint1.e
 Integration File signal 2: autoint2.e
 Quant Time: Jan 28 22:46:43 2025
 Quant Method : Z:\pestpcbsrv\HPCHEM1\ECD_Q\Method\PQ012825.M
 Quant Title : GC EXTRACTABLES
 QLast Update : Tue Jan 28 14:44:45 2025
 Response via : Initial Calibration
 Integrator: ChemStation

Volume Inj. : 2 µl
 Signal #1 Phase : ZB-MR1 Signal #2 Phase: ZB-MR2
 Signal #1 Info : 30Mx0.32mmx 0.50µm Signal #2 Info : 30M x 0.32mm x 0.25µm





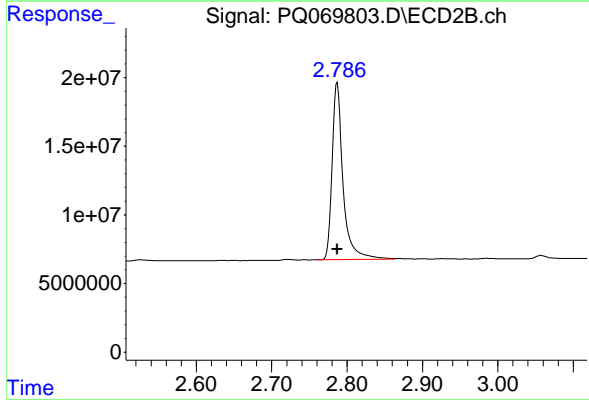
#1 Tetrachloro-m-xylene

R.T.: 3.414 min
 Delta R.T.: -0.001 min
 Response: 152369516
 Conc: 18.86 ng/ml

Instrument : ECD_Q
 Client Sample Id : LOD-MDL-SOIL-01-QT1-2025

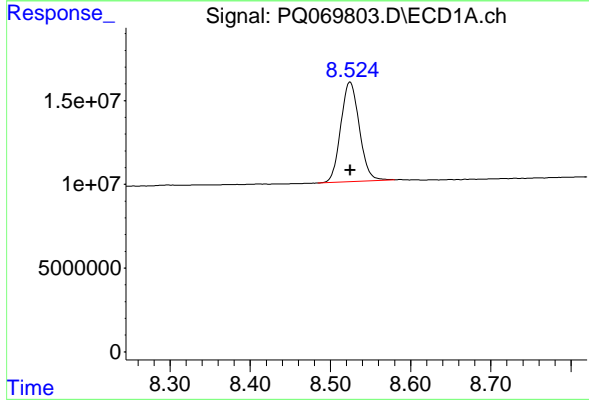
Manual Integrations
 APPROVED

Reviewed By :Yogesh Patel 01/29/2025
 Supervised By :Ankita Jodhani 01/29/2025



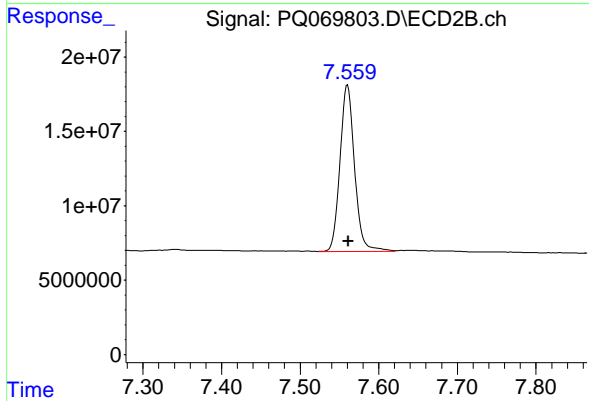
#1 Tetrachloro-m-xylene

R.T.: 2.787 min
 Delta R.T.: 0.000 min
 Response: 130539955
 Conc: 17.18 ng/ml



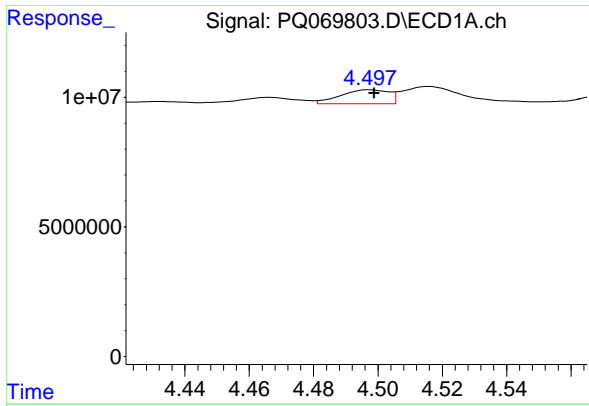
#2 Decachlorobiphenyl

R.T.: 8.525 min
 Delta R.T.: 0.000 min
 Response: 95526273
 Conc: 20.54 ng/ml



#2 Decachlorobiphenyl

R.T.: 7.560 min
 Delta R.T.: 0.000 min
 Response: 144339827
 Conc: 18.75 ng/ml



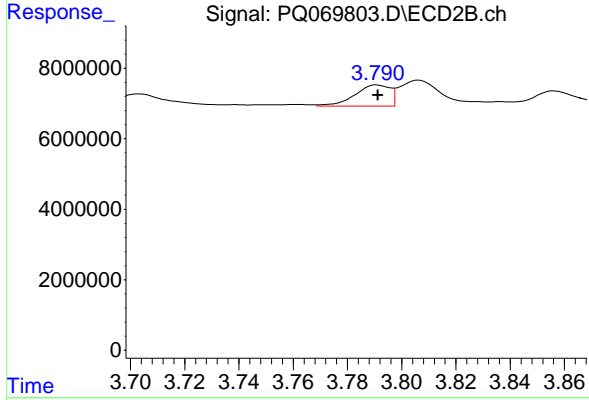
#16 AR-1242-1

R.T.: 4.497 min
 Delta R.T.: -0.002 min
 Response: 5620845
 Conc: 28.16 ng/ml

Instrument : ECD_Q
 Client Sample Id : LOD-MDL-SOIL-01-QT1-2025

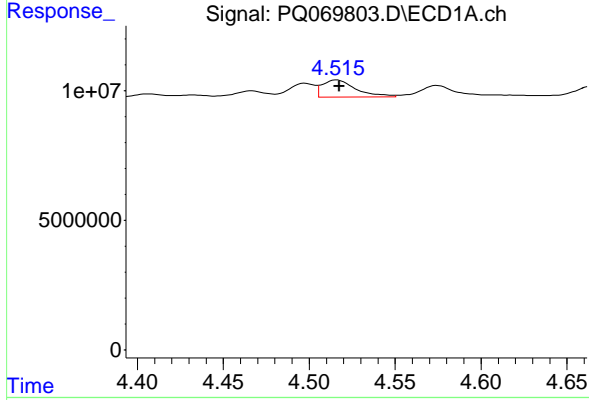
Manual Integrations
 APPROVED

Reviewed By :Yogesh Patel 01/29/2025
 Supervised By :Ankita Jodhani 01/29/2025



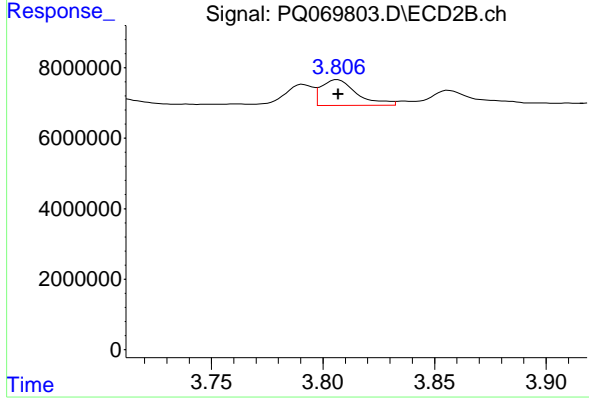
#16 AR-1242-1

R.T.: 3.791 min
 Delta R.T.: 0.000 min
 Response: 5398439
 Conc: 28.77 ng/ml



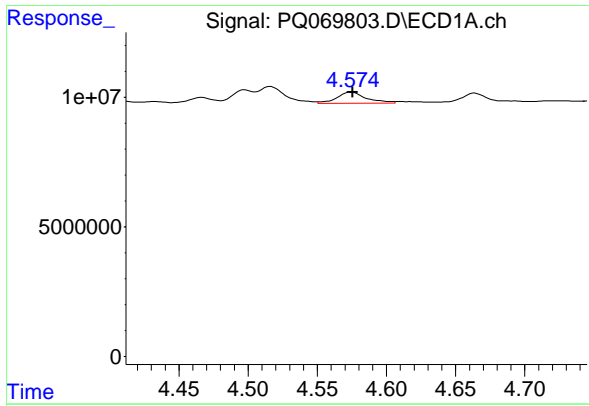
#17 AR-1242-2

R.T.: 4.516 min
 Delta R.T.: -0.001 min
 Response: 8936193
 Conc: 28.13 ng/ml



#17 AR-1242-2

R.T.: 3.807 min
 Delta R.T.: 0.000 min
 Response: 8161514
 Conc: 28.36 ng/ml



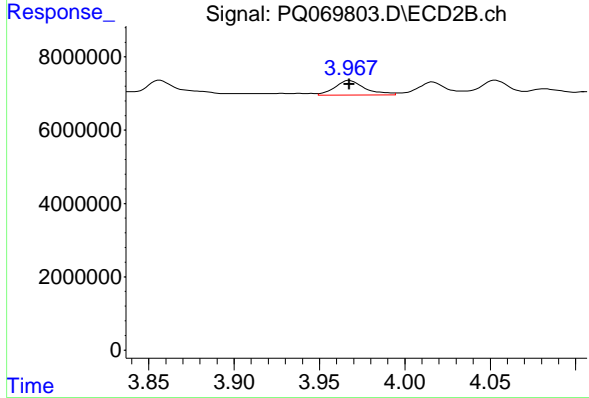
#18 AR-1242-3

R.T.: 4.574 min
 Delta R.T.: -0.001 min
 Response: 6307679
 Conc: 30.55 ng/ml

Instrument : ECD_Q
 Client Sample Id : LOD-MDL-SOIL-01-QT1-2025

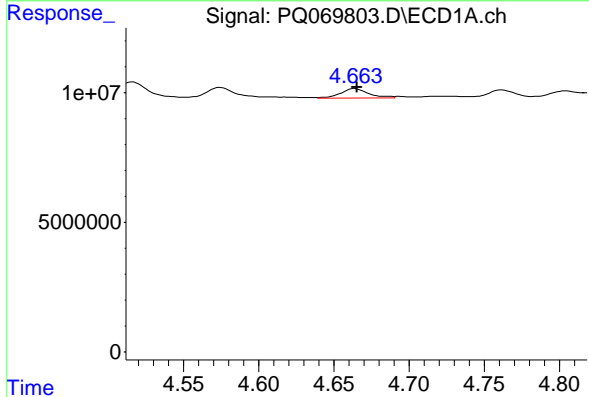
Manual Integrations
 APPROVED

Reviewed By :Yogesh Patel 01/29/2025
 Supervised By :Ankita Jodhani 01/29/2025



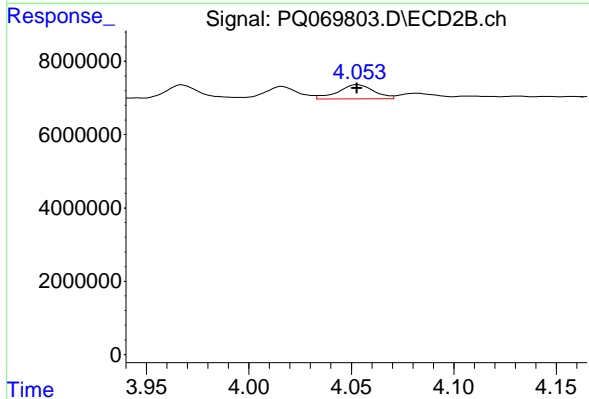
#18 AR-1242-3

R.T.: 3.968 min
 Delta R.T.: 0.000 min
 Response: 4841111
 Conc: 29.05 ng/ml



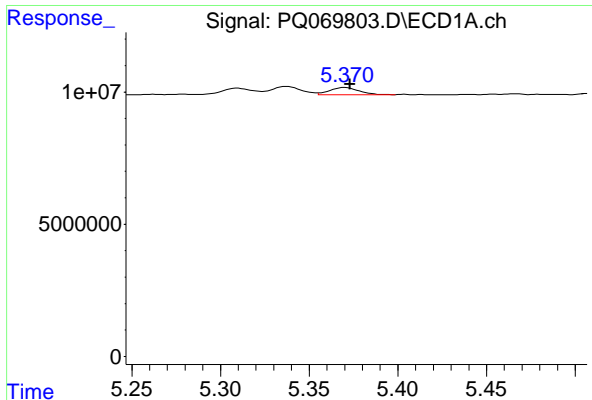
#19 AR-1242-4

R.T.: 4.663 min
 Delta R.T.: -0.002 min
 Response: 4754418
 Conc: 28.34 ng/ml



#19 AR-1242-4

R.T.: 4.053 min
 Delta R.T.: 0.000 min
 Response: 4775434
 Conc: 30.41 ng/ml



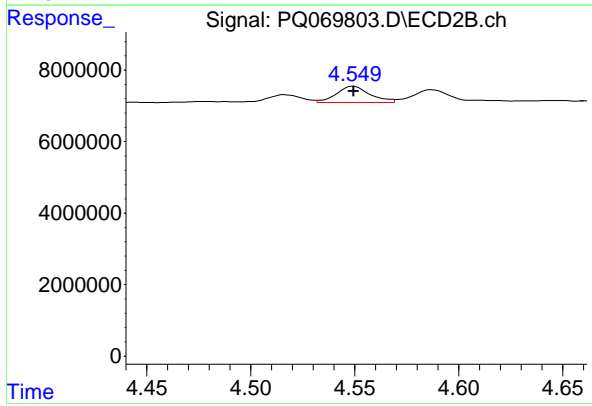
#20 AR-1242-5

R.T.: 5.370 min
 Delta R.T.: -0.003 min
 Response: 3148857
 Conc: 18.39 ng/ml

Instrument : ECD_Q
 Client Sample Id : LOD-MDL-SOIL-01-QT1-2025

Manual Integrations
 APPROVED

Reviewed By :Yogesh Patel 01/29/2025
 Supervised By :Ankita Jodhani 01/29/2025



#20 AR-1242-5

R.T.: 4.549 min
 Delta R.T.: 0.000 min
 Response: 5058414
 Conc: 26.31 ng/ml m