

Data Path : Z:\pestpcbsrv\HPCHEM1\ECD\_Q\Data\PQ012825\  
 Data File : PQ069814.D  
 Signal(s) : Signal #1: ECD1A.ch Signal #2: ECD2B.ch  
 Acq On : 28 Jan 2025 19:11  
 Operator : YP\AJ  
 Sample : Q1168-07  
 Misc : AR1242 LOD 25 PPB  
 ALS Vial : 17 Sample Multiplier: 1

**Instrument :**  
 ECD\_Q  
**ClientSampleId :**  
 LOD-MDL-WATER-01-QT1-2025

Integration File signal 1: autoint1.e  
 Integration File signal 2: autoint2.e  
 Quant Time: Jan 28 22:20:19 2025  
 Quant Method : Z:\pestpcbsrv\HPCHEM1\ECD\_Q\Method\PQ012825.M  
 Quant Title : GC EXTRACTABLES  
 QLast Update : Tue Jan 28 14:44:45 2025  
 Response via : Initial Calibration  
 Integrator: ChemStation

Volume Inj. : 2 µl  
 Signal #1 Phase : ZB-MR1 Signal #2 Phase: ZB-MR2  
 Signal #1 Info : 30Mx0.32mmx 0.50µ Signal #2 Info : 30M x 0.32mm x 0.25µm

Compound	RT#1	RT#2	Resp#1	Resp#2	ng/ml	ng/ml
-----						
System Monitoring Compounds						
1) SA Tetrachlo...	3.415	2.786	157.2E6	128.3E6	19.456	16.883
2) SA Decachlor...	8.527	7.560	97682163	146.0E6	21.002	18.965
Target Compounds						
16) L4 AR-1242-1	4.498	3.790	5828142	5348416	29.196	28.503
17) L4 AR-1242-2	4.517	3.805	9007030	7905696	28.353	27.471
18) L4 AR-1242-3	4.576	3.967	6440949	5334112	31.194	32.005
19) L4 AR-1242-4	4.666	4.053	4770609	4740990	28.433	30.187
20) L4 AR-1242-5	5.371	4.549	4614203	5891695	26.941	30.639
-----						

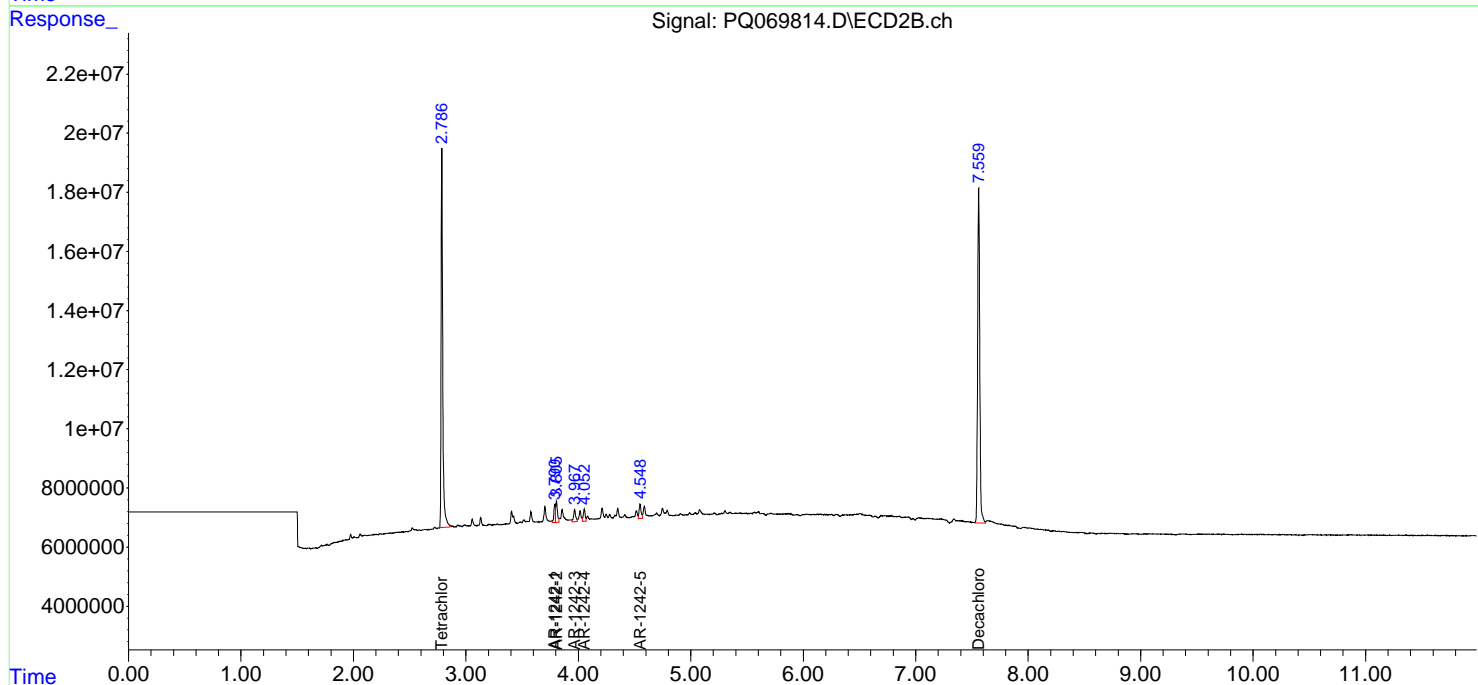
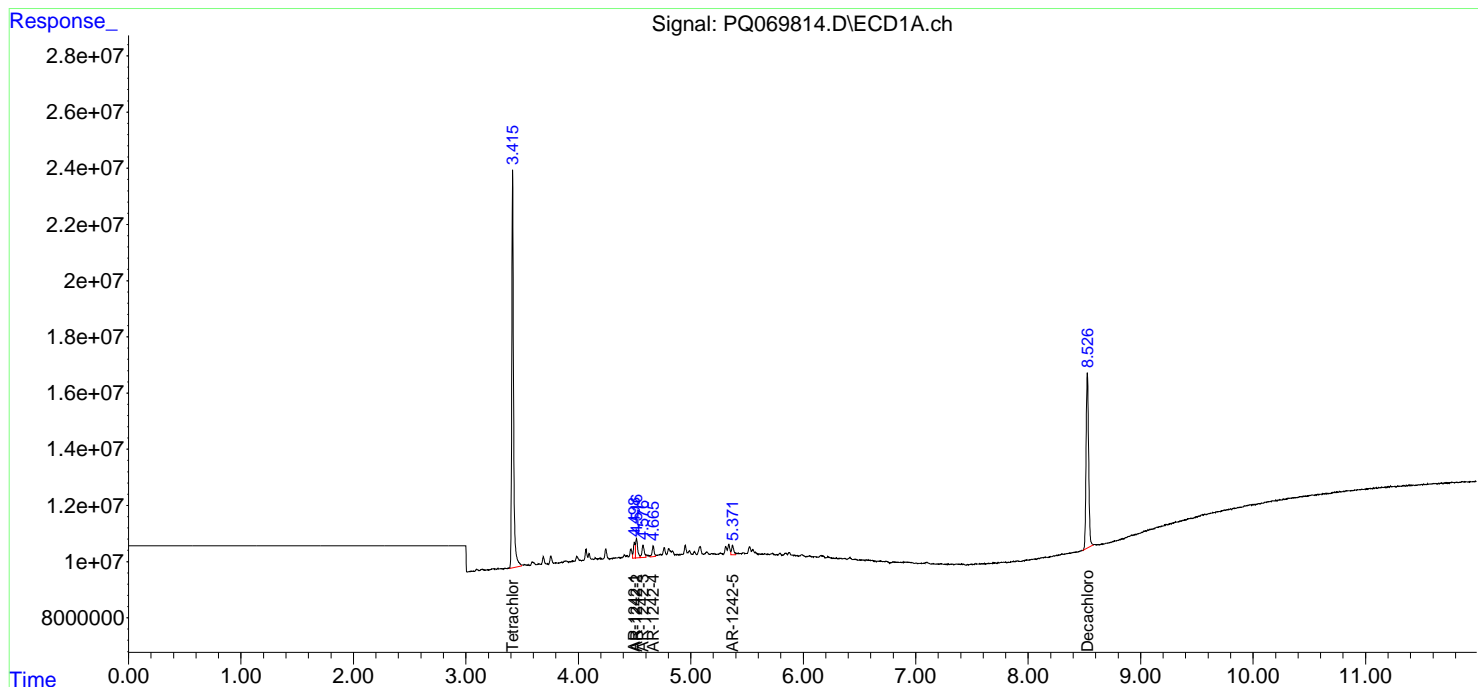
(f)=RT Delta > 1/2 Window (#)=Amounts differ by > 25% (m)=manual int.

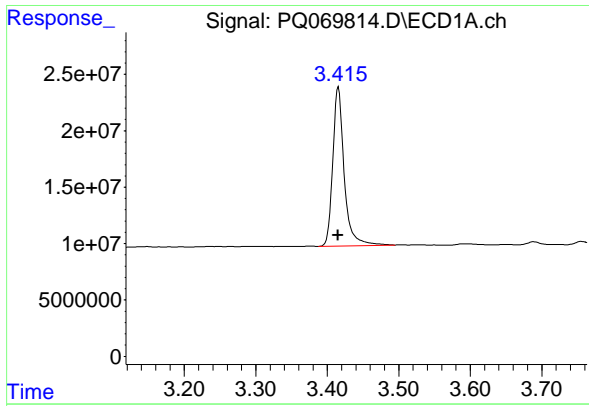
Data Path : Z:\pestpcbsrv\HPCHEM1\ECD\_Q\Data\PQ012825\  
 Data File : PQ069814.D  
 Signal(s) : Signal #1: ECD1A.ch Signal #2: ECD2B.ch  
 Acq On : 28 Jan 2025 19:11  
 Operator : YP\AJ  
 Sample : Q1168-07  
 Misc : AR1242 LOD 25 PPB  
 ALS Vial : 17 Sample Multiplier: 1

Instrument :  
 ECD\_Q  
 ClientSampleId :  
 LOD-MDL-WATER-01-QT1-2025

Integration File signal 1: autoint1.e  
 Integration File signal 2: autoint2.e  
 Quant Time: Jan 28 22:20:19 2025  
 Quant Method : Z:\pestpcbsrv\HPCHEM1\ECD\_Q\Method\PQ012825.M  
 Quant Title : GC EXTRACTABLES  
 QLast Update : Tue Jan 28 14:44:45 2025  
 Response via : Initial Calibration  
 Integrator: ChemStation

Volume Inj. : 2 µl  
 Signal #1 Phase : ZB-MR1 Signal #2 Phase: ZB-MR2  
 Signal #1 Info : 30Mx0.32mmx 0.50µm Signal #2 Info : 30M x 0.32mm x 0.25µm

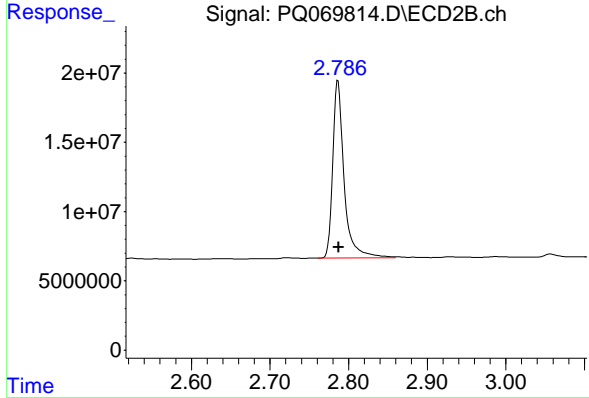




#1 Tetrachloro-m-xylene

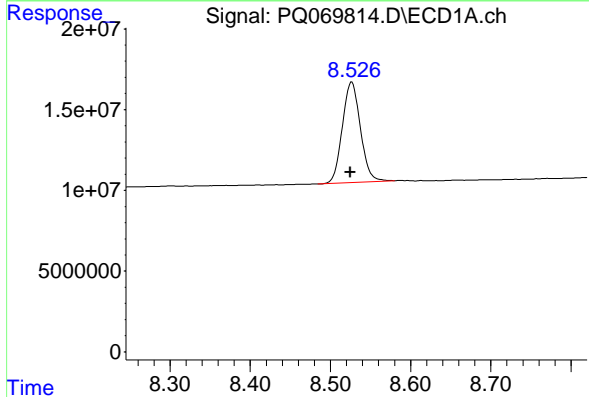
R.T.: 3.415 min  
 Delta R.T.: 0.000 min  
 Response: 157190148  
 Conc: 19.46 ng/ml

Instrument : ECD\_Q  
 ClientSampleId : LOD-MDL-WATER-01-QT1-2025



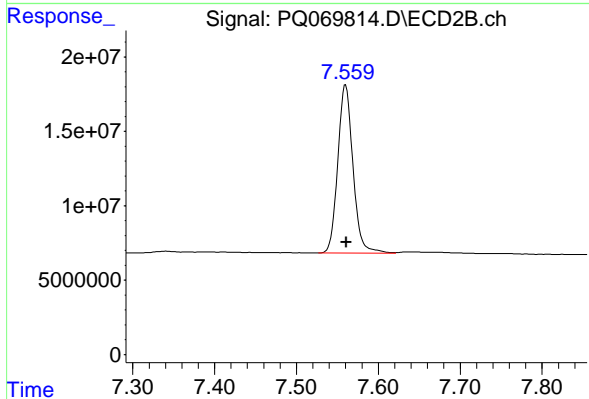
#1 Tetrachloro-m-xylene

R.T.: 2.786 min  
 Delta R.T.: 0.000 min  
 Response: 128313940  
 Conc: 16.88 ng/ml



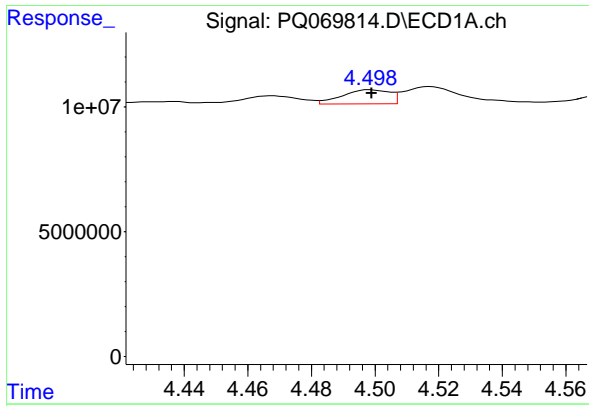
#2 Decachlorobiphenyl

R.T.: 8.527 min  
 Delta R.T.: 0.002 min  
 Response: 97682163  
 Conc: 21.00 ng/ml



#2 Decachlorobiphenyl

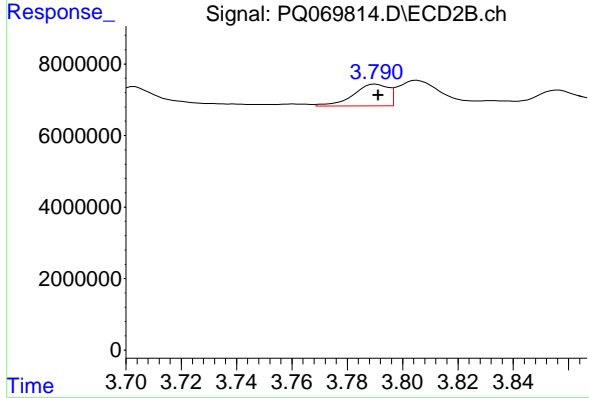
R.T.: 7.560 min  
 Delta R.T.: 0.000 min  
 Response: 146003523  
 Conc: 18.96 ng/ml



#16 AR-1242-1

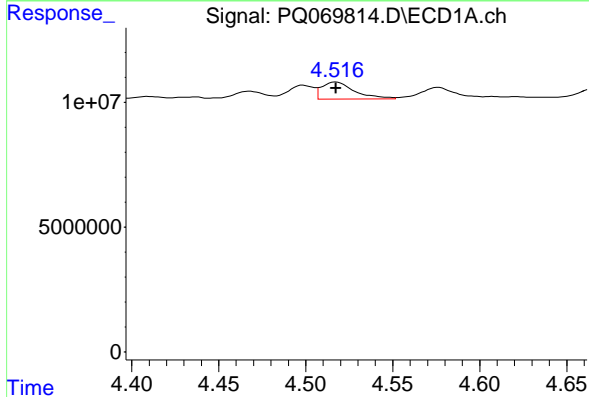
R.T.: 4.498 min  
 Delta R.T.: 0.000 min  
 Response: 5828142  
 Conc: 29.20 ng/ml

Instrument : ECD\_Q  
 ClientSampleId : LOD-MDL-WATER-01-QT1-2025



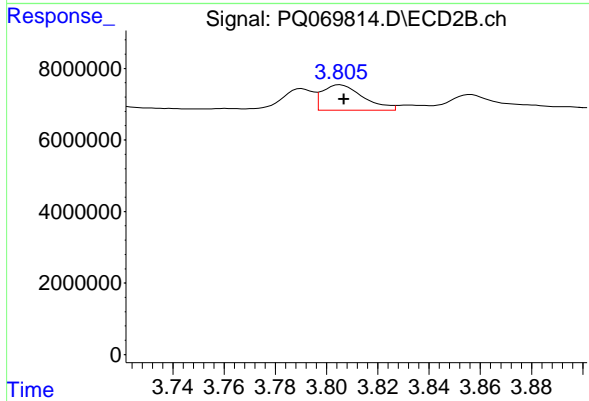
#16 AR-1242-1

R.T.: 3.790 min  
 Delta R.T.: 0.000 min  
 Response: 5348416  
 Conc: 28.50 ng/ml



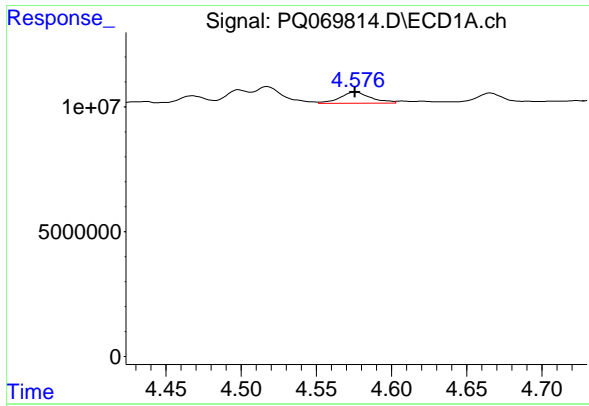
#17 AR-1242-2

R.T.: 4.517 min  
 Delta R.T.: 0.000 min  
 Response: 9007030  
 Conc: 28.35 ng/ml



#17 AR-1242-2

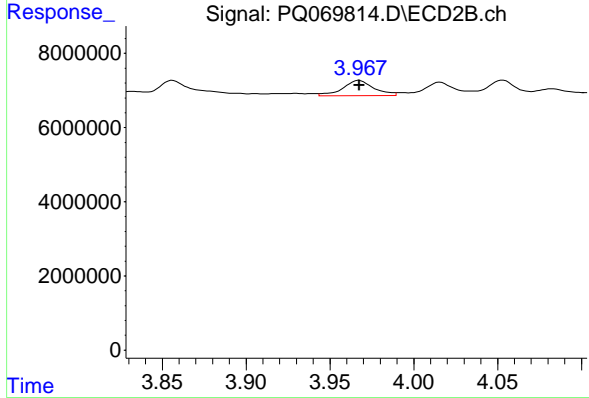
R.T.: 3.805 min  
 Delta R.T.: -0.002 min  
 Response: 7905696  
 Conc: 27.47 ng/ml



#18 AR-1242-3

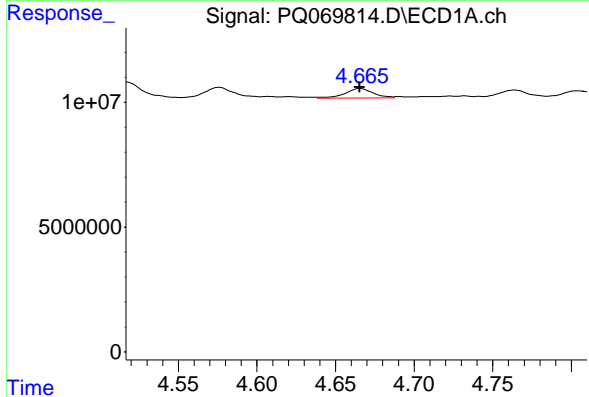
R.T.: 4.576 min  
 Delta R.T.: 0.000 min  
 Response: 6440949  
 Conc: 31.19 ng/ml

Instrument : ECD\_Q  
 ClientSampleId : LOD-MDL-WATER-01-QT1-2025



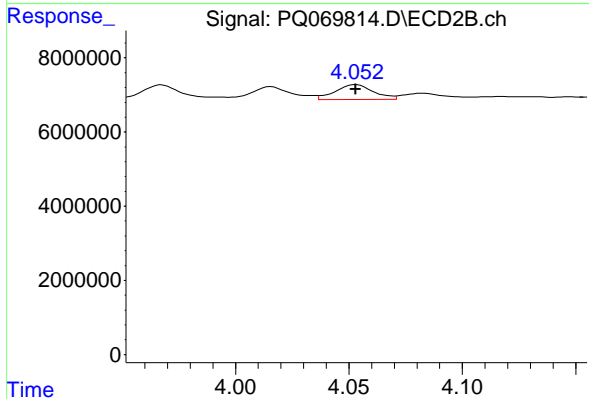
#18 AR-1242-3

R.T.: 3.967 min  
 Delta R.T.: 0.000 min  
 Response: 5334112  
 Conc: 32.00 ng/ml



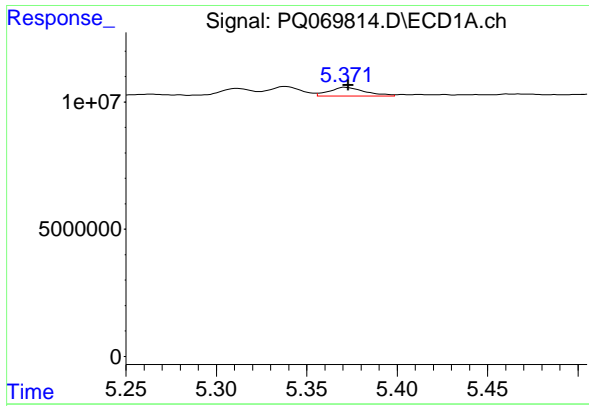
#19 AR-1242-4

R.T.: 4.666 min  
 Delta R.T.: 0.000 min  
 Response: 4770609  
 Conc: 28.43 ng/ml



#19 AR-1242-4

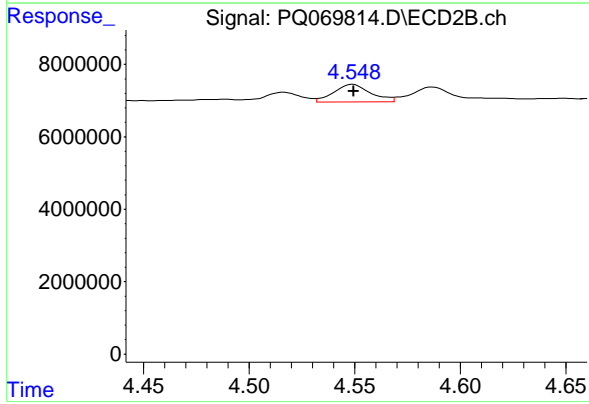
R.T.: 4.053 min  
 Delta R.T.: 0.000 min  
 Response: 4740990  
 Conc: 30.19 ng/ml



#20 AR-1242-5

R.T.: 5.371 min  
 Delta R.T.: -0.002 min  
 Response: 4614203  
 Conc: 26.94 ng/ml

Instrument : ECD\_Q  
 ClientSampleId : LOD-MDL-WATER-01-QT1-2025



#20 AR-1242-5

R.T.: 4.549 min  
 Delta R.T.: 0.000 min  
 Response: 5891695  
 Conc: 30.64 ng/ml