

Data Path : Z:\pestpcbsrv\HPCHEM1\ECD_Q\Data\PQ020222\
 Data File : PQ056086.D
 Signal(s) : Signal #1: ECD1A.ch Signal #2: ECD2B.ch
 Acq On : 02 Feb 2022 18:26
 Operator : AJ\MA
 Sample : AR1242CCC500
 Misc :
 ALS Vial : 4 Sample Multiplier: 1

Instrument :
 ECD_Q
 ClientSampleId :
 AR1242CCC500

Integration File signal 1: autoint1.e
 Integration File signal 2: autoint2.e
 Quant Time: Feb 03 04:30:14 2022
 Quant Method : Z:\pestpcbsrv\HPCHEM1\ECD_Q\Method\PQ011922.M
 Quant Title : GC EXTRACTABLES
 QLast Update : Thu Jan 20 13:18:56 2022
 Response via : Initial Calibration
 Integrator: ChemStation

Volume Inj. : 2 µl
 Signal #1 Phase : ZB-MR1 Signal #2 Phase: ZB-MR2
 Signal #1 Info : 30Mx0.32mmx 0.50µ Signal #2 Info : 30M x 0.32mm x 0.25µm

Compound	RT#1	RT#2	Resp#1	Resp#2	ng/ml	ng/ml

System Monitoring Compounds						
1) SA Tetrachlo...	5.233	4.293	652.9E6	575.7E6	48.204	51.200
2) SA Decachlor...	11.402	9.647	745.2E6	397.3E6	51.045	49.817
Target Compounds						
16) L4 AR-1242-1	6.560	5.560	121.6E6	116.8E6	450.685	504.622
17) L4 AR-1242-2	6.584	5.580	249.9E6	234.1E6	477.357	497.264
18) L4 AR-1242-3	6.649	5.773	175.3E6	103.1E6	484.783	496.585
19) L4 AR-1242-4	6.758	5.865	140.9E6	107.9E6	483.010	483.734
20) L4 AR-1242-5	7.540	6.432	127.6E6	133.0E6	481.460	492.393

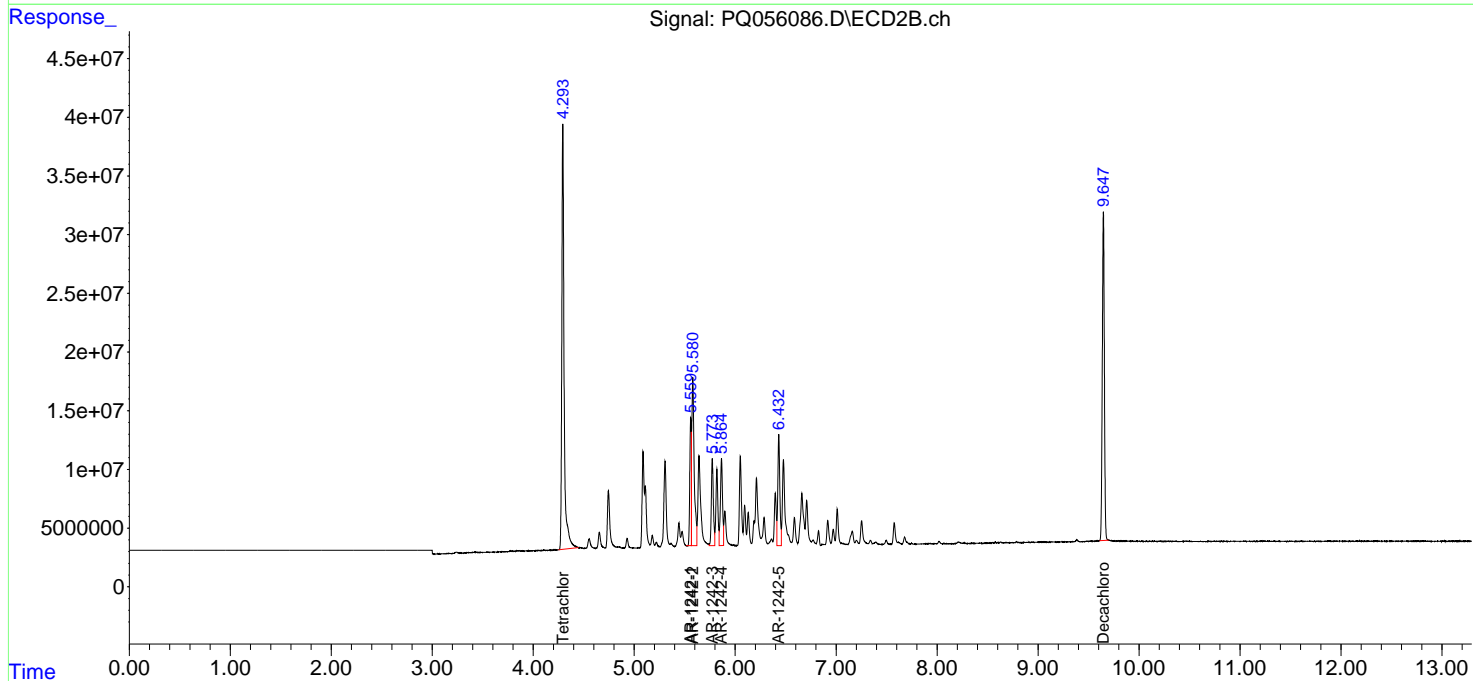
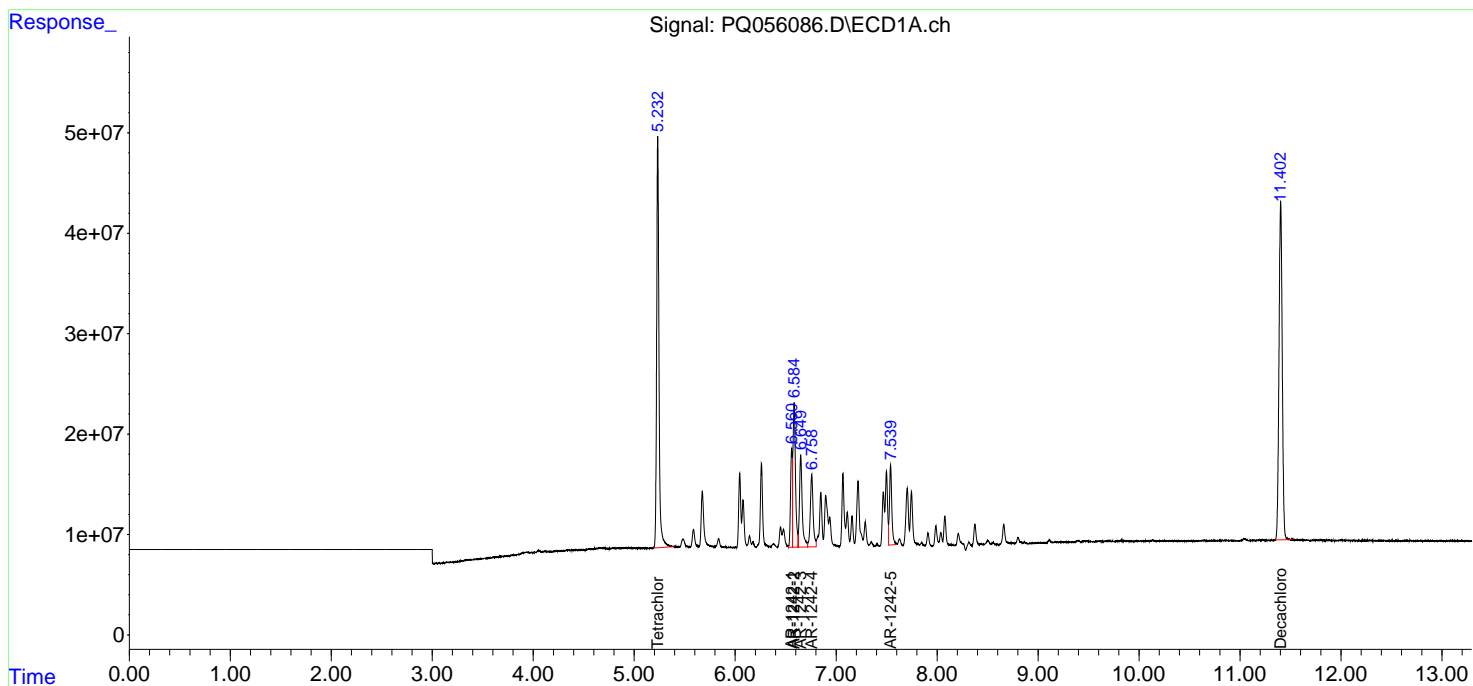
(f)=RT Delta > 1/2 Window (#)=Amounts differ by > 25% (m)=manual int.

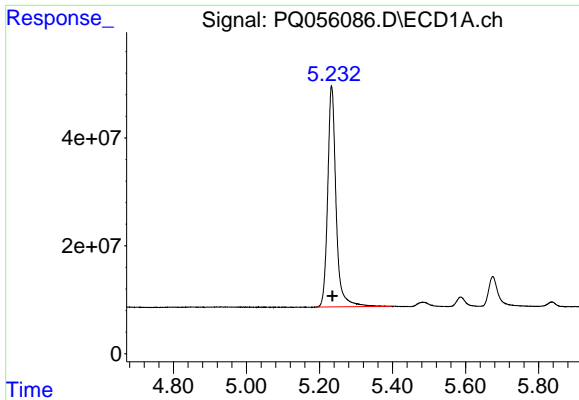
Data Path : Z:\pestpcbsrv\HPCHEM1\ECD_Q\Data\PQ020222\
 Data File : PQ056086.D
 Signal(s) : Signal #1: ECD1A.ch Signal #2: ECD2B.ch
 Acq On : 02 Feb 2022 18:26
 Operator : AJ\MA
 Sample : AR1242CCC500
 Misc :
 ALS Vial : 4 Sample Multiplier: 1

Instrument :
 ECD_Q
 ClientSampleId :
 AR1242CCC500

Integration File signal 1: autoint1.e
 Integration File signal 2: autoint2.e
 Quant Time: Feb 03 04:30:14 2022
 Quant Method : Z:\pestpcbsrv\HPCHEM1\ECD_Q\Method\PQ011922.M
 Quant Title : GC EXTRACTABLES
 QLast Update : Thu Jan 20 13:18:56 2022
 Response via : Initial Calibration
 Integrator: ChemStation

Volume Inj. : 2 µl
 Signal #1 Phase : ZB-MR1 Signal #2 Phase: ZB-MR2
 Signal #1 Info : 30Mx0.32mmx 0.50µ Signal #2 Info : 30M x 0.32mm x 0.25µm

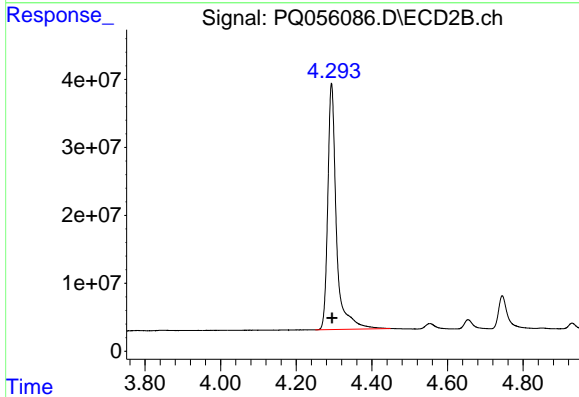




#1 Tetrachloro-m-xylene

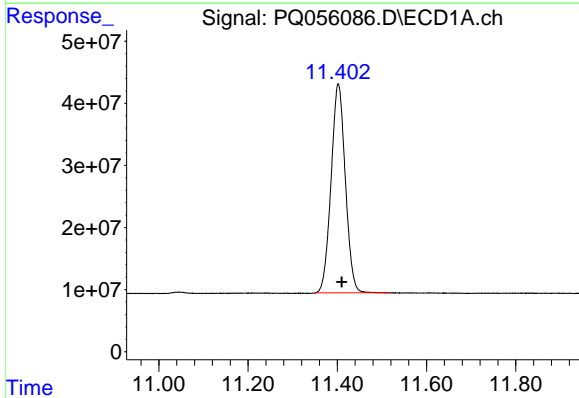
R.T.: 5.233 min
 Delta R.T.: -0.003 min
 Response: 652872093
 Conc: 48.20 ng/ml

Instrument :
 ECD_Q
 ClientSampleId :
 AR1242CCC500



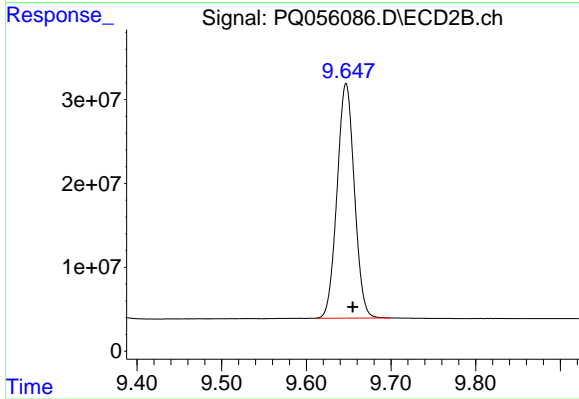
#1 Tetrachloro-m-xylene

R.T.: 4.293 min
 Delta R.T.: 0.000 min
 Response: 575674029
 Conc: 51.20 ng/ml



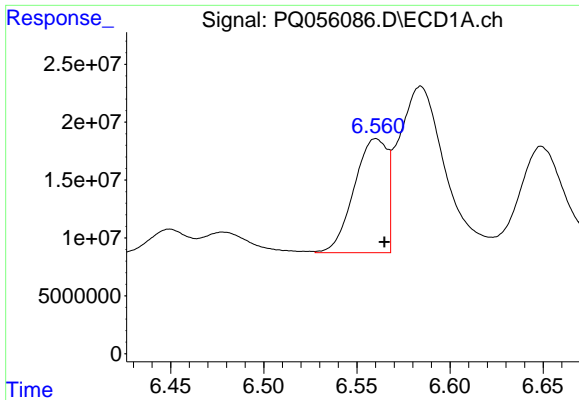
#2 Decachlorobiphenyl

R.T.: 11.402 min
 Delta R.T.: -0.008 min
 Response: 745192637
 Conc: 51.05 ng/ml



#2 Decachlorobiphenyl

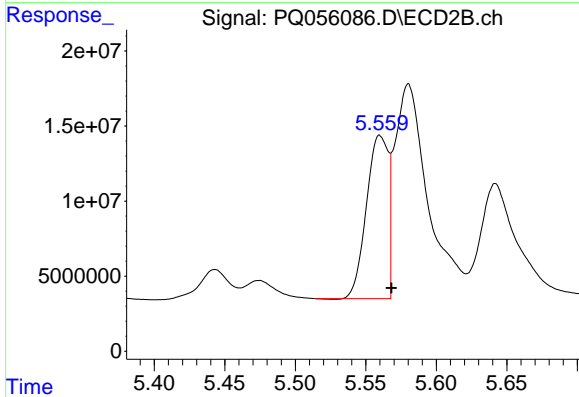
R.T.: 9.647 min
 Delta R.T.: -0.008 min
 Response: 397296112
 Conc: 49.82 ng/ml



#16 AR-1242-1

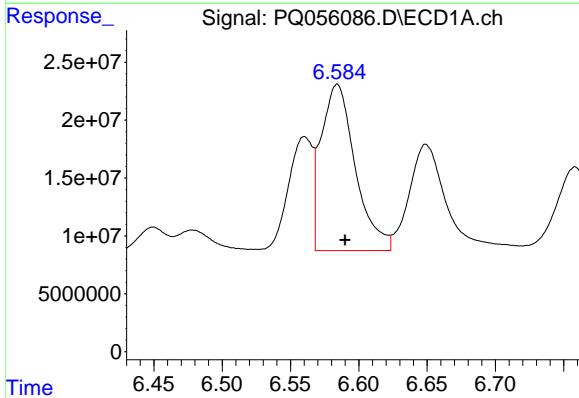
R.T.: 6.560 min
 Delta R.T.: -0.005 min
 Response: 121602250
 Conc: 450.69 ng/ml

Instrument :
 ECD_Q
 ClientSampleId :
 AR1242CCC500



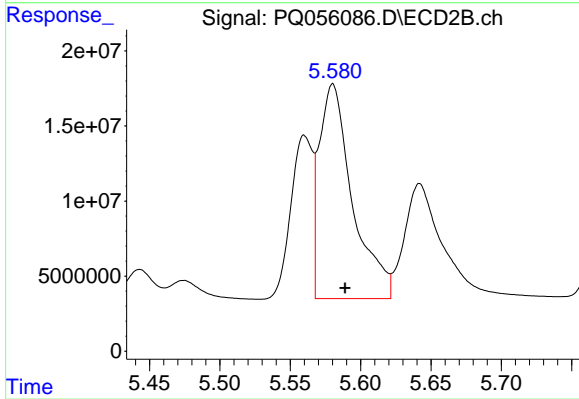
#16 AR-1242-1

R.T.: 5.560 min
 Delta R.T.: -0.008 min
 Response: 116797560
 Conc: 504.62 ng/ml



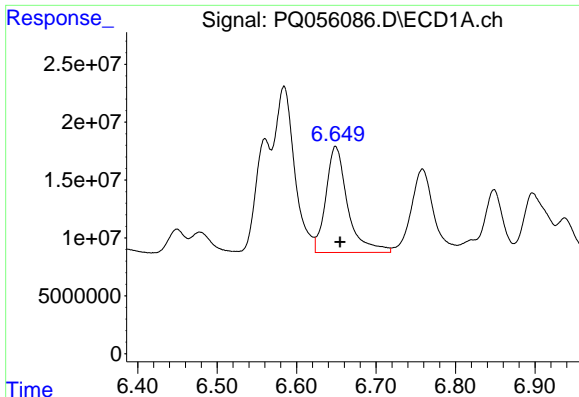
#17 AR-1242-2

R.T.: 6.584 min
 Delta R.T.: -0.006 min
 Response: 249855795
 Conc: 477.36 ng/ml



#17 AR-1242-2

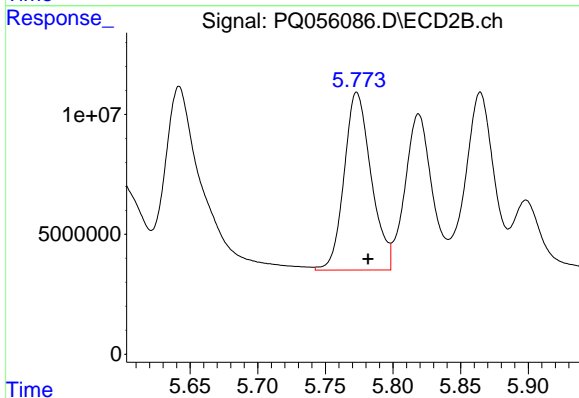
R.T.: 5.580 min
 Delta R.T.: -0.009 min
 Response: 234141104
 Conc: 497.26 ng/ml



#18 AR-1242-3

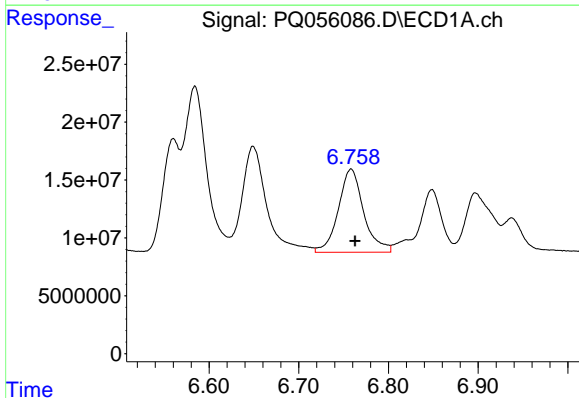
R.T.: 6.649 min
 Delta R.T.: -0.006 min
 Response: 175317938
 Conc: 484.78 ng/ml

Instrument :
 ECD_Q
 ClientSampleId :
 AR1242CCC500



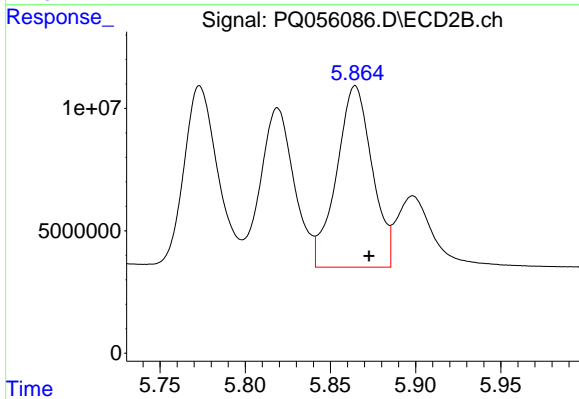
#18 AR-1242-3

R.T.: 5.773 min
 Delta R.T.: -0.008 min
 Response: 103123691
 Conc: 496.58 ng/ml



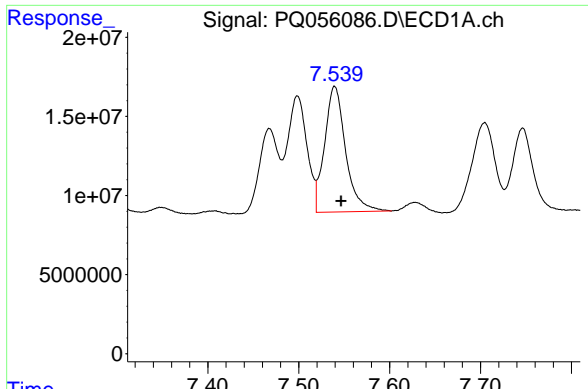
#19 AR-1242-4

R.T.: 6.758 min
 Delta R.T.: -0.004 min
 Response: 140914168
 Conc: 483.01 ng/ml



#19 AR-1242-4

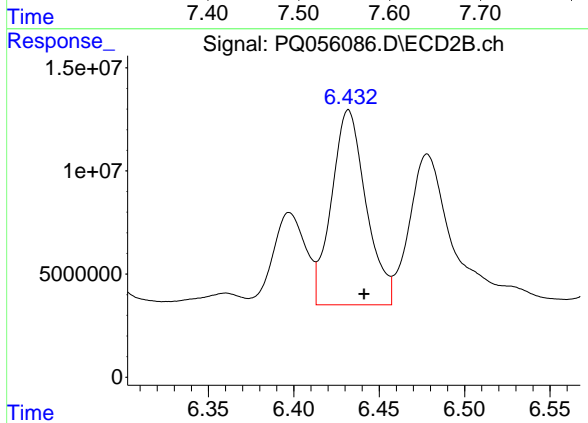
R.T.: 5.865 min
 Delta R.T.: -0.008 min
 Response: 107907126
 Conc: 483.73 ng/ml



#20 AR-1242-5

R.T.: 7.540 min
Delta R.T.: -0.007 min
Response: 127636773
Conc: 481.46 ng/ml

Instrument :
ECD_Q
ClientSampleId :
AR1242CCC500



#20 AR-1242-5

R.T.: 6.432 min
Delta R.T.: -0.009 min
Response: 132961166
Conc: 492.39 ng/ml