

Data Path : Z:\pestpcbsrv\HPCHEM1\ECD\_Q\Data\PQ020222\  
 Data File : PQ056119.D  
 Signal(s) : Signal #1: ECD1A.ch Signal #2: ECD2B.ch  
 Acq On : 03 Feb 2022 04:48  
 Operator : AJ\MA  
 Sample : N1359-06  
 Misc :  
 ALS Vial : 51 Sample Multiplier: 1

Instrument :  
 ECD\_Q  
 ClientSampleId :  
 MW-26

Integration File signal 1: autoint1.e  
 Integration File signal 2: autoint2.e  
 Quant Time: Feb 03 05:28:51 2022  
 Quant Method : Z:\pestpcbsrv\HPCHEM1\ECD\_Q\Method\PQ011922.M  
 Quant Title : GC EXTRACTABLES  
 QLast Update : Thu Jan 20 13:18:56 2022  
 Response via : Initial Calibration  
 Integrator: ChemStation

Volume Inj. : 2 µl  
 Signal #1 Phase : ZB-MR1 Signal #2 Phase: ZB-MR2  
 Signal #1 Info : 30Mx0.32mmx 0.50µ Signal #2 Info : 30M x 0.32mm x 0.25µm

Compound	RT#1	RT#2	Resp#1	Resp#2	ng/ml	ng/ml
-----						
System Monitoring Compounds						
1) SA Tetrachlo...	5.235	4.296	297.6E6	247.3E6	21.974	21.996
2) SA Decachlor...	11.402	9.644	214.8E6	100.5E6	14.714	12.596

Target Compounds

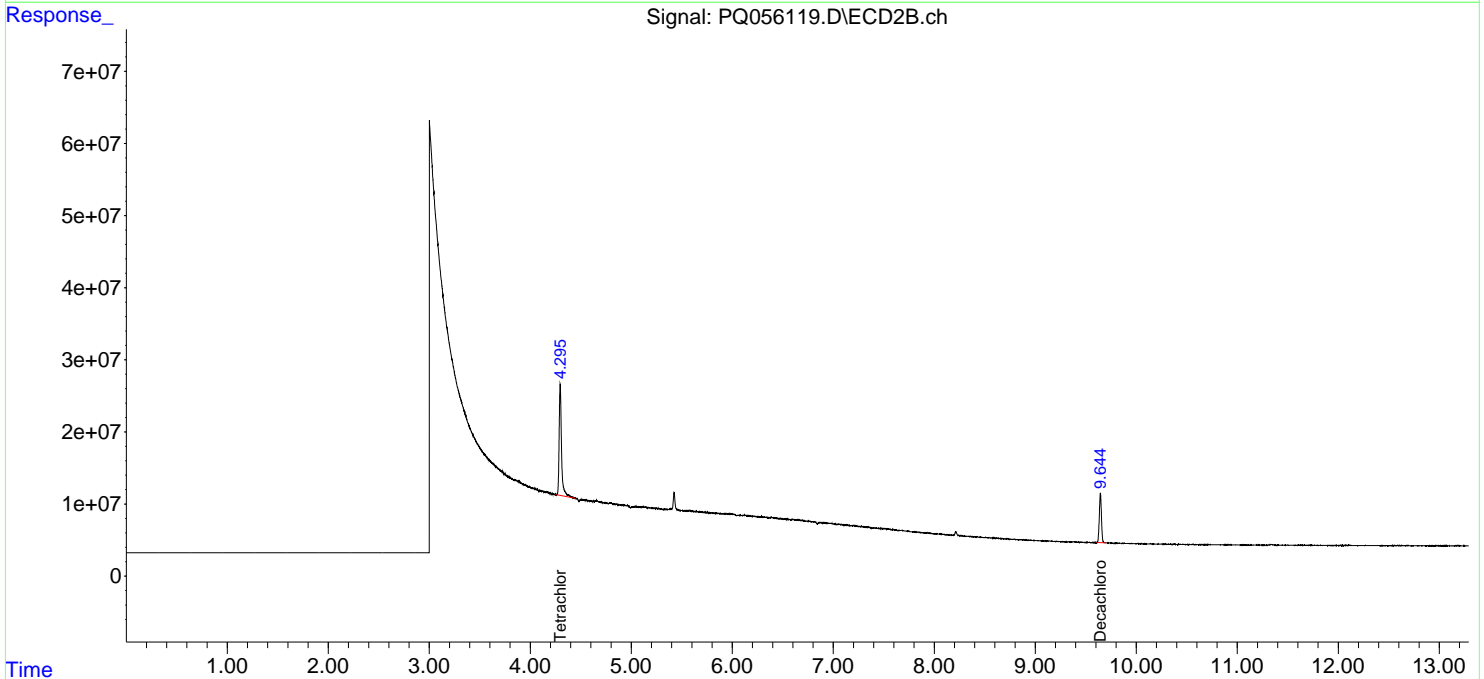
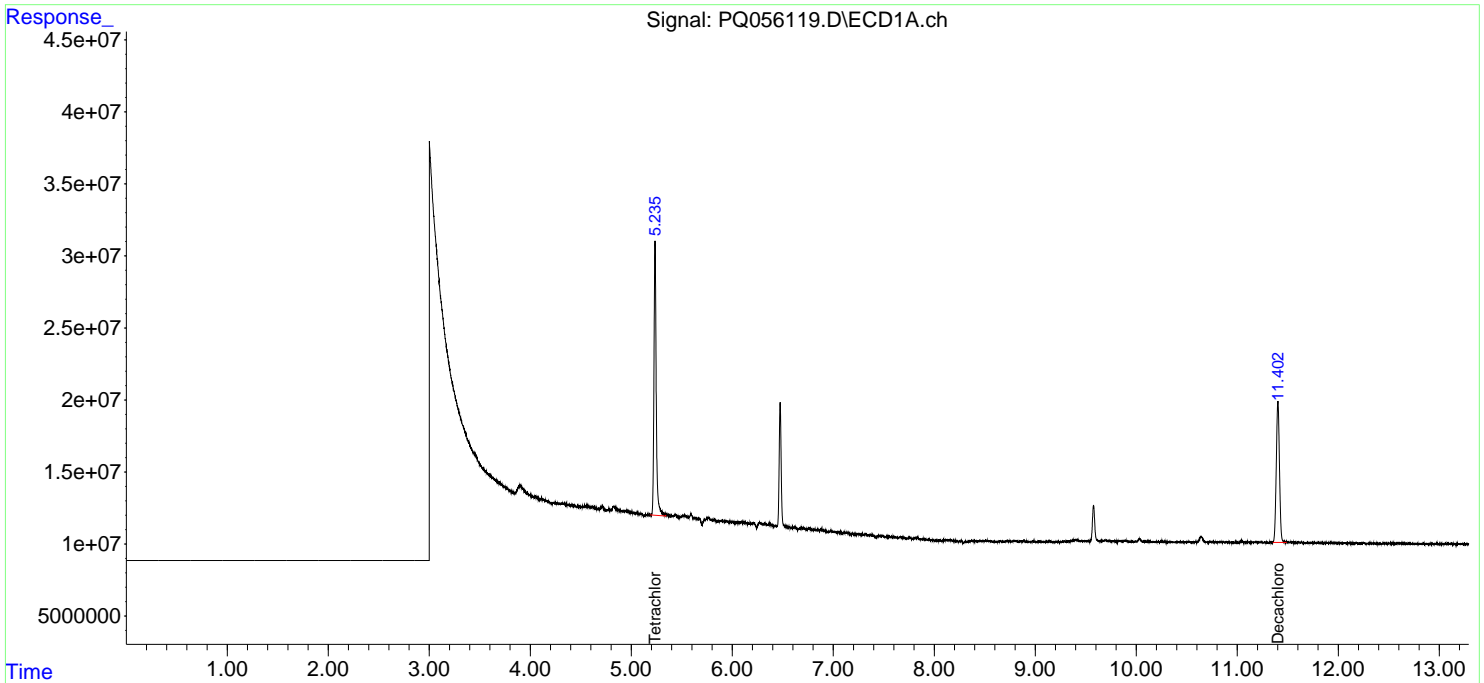
(f)=RT Delta > 1/2 Window (#)=Amounts differ by > 25% (m)=manual int.

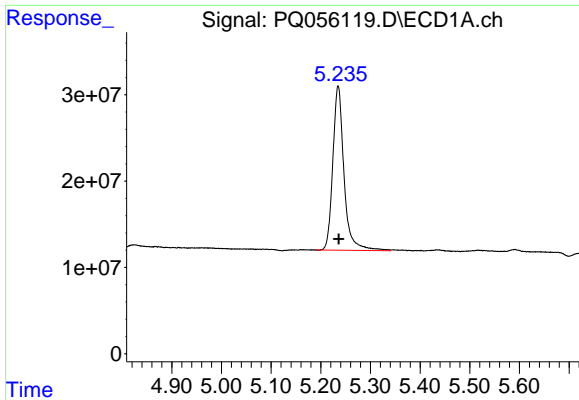
Data Path : Z:\pestpcbsrv\HPCHEM1\ECD\_Q\Data\PQ020222\  
 Data File : PQ056119.D  
 Signal(s) : Signal #1: ECD1A.ch Signal #2: ECD2B.ch  
 Acq On : 03 Feb 2022 04:48  
 Operator : AJ\MA  
 Sample : N1359-06  
 Misc :  
 ALS Vial : 51 Sample Multiplier: 1

Instrument :  
 ECD\_Q  
 ClientSampleId :  
 MW-26

Integration File signal 1: autoint1.e  
 Integration File signal 2: autoint2.e  
 Quant Time: Feb 03 05:28:51 2022  
 Quant Method : Z:\pestpcbsrv\HPCHEM1\ECD\_Q\Method\PQ011922.M  
 Quant Title : GC EXTRACTABLES  
 QLast Update : Thu Jan 20 13:18:56 2022  
 Response via : Initial Calibration  
 Integrator: ChemStation

Volume Inj. : 2 µl  
 Signal #1 Phase : ZB-MR1 Signal #2 Phase: ZB-MR2  
 Signal #1 Info : 30Mx0.32mmx 0.50µm Signal #2 Info : 30M x 0.32mm x 0.25µm

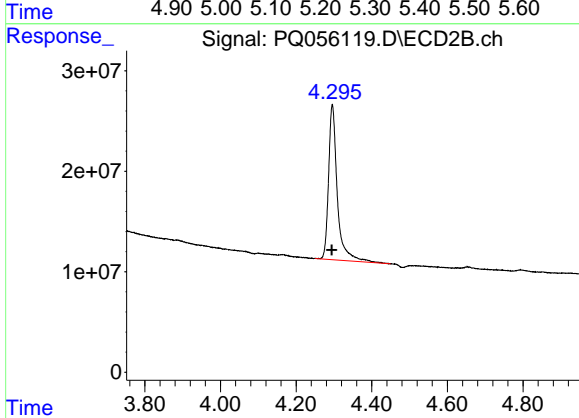




#1 Tetrachloro-m-xylene

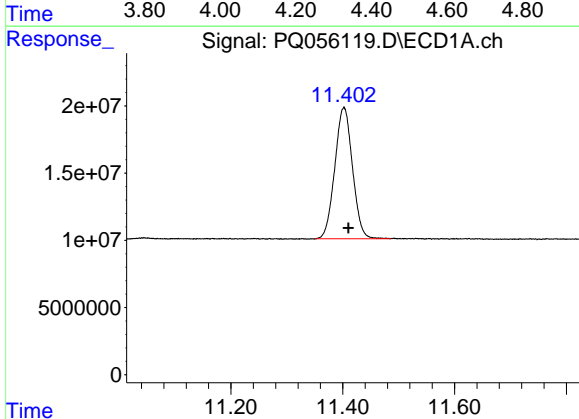
R.T.: 5.235 min  
 Delta R.T.: 0.000 min  
 Response: 297609630  
 Conc: 21.97 ng/ml

Instrument :  
 ECD\_Q  
 ClientSampleId :  
 MW-26



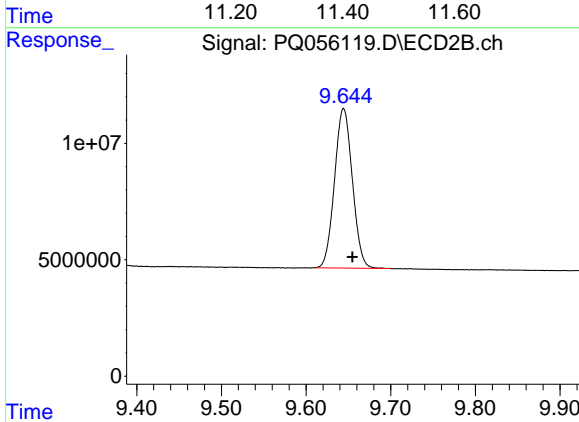
#1 Tetrachloro-m-xylene

R.T.: 4.296 min  
 Delta R.T.: 0.001 min  
 Response: 247318651  
 Conc: 22.00 ng/ml



#2 Decachlorobiphenyl

R.T.: 11.402 min  
 Delta R.T.: -0.008 min  
 Response: 214806334  
 Conc: 14.71 ng/ml



#2 Decachlorobiphenyl

R.T.: 9.644 min  
 Delta R.T.: -0.011 min  
 Response: 100454351  
 Conc: 12.60 ng/ml