

Data Path : Z:\pestpcbsrv\HPCHEM1\ECD_Q\Data\PQ020524\
 Data File : PQ065226.D
 Signal(s) : Signal #1: ECD1A.ch Signal #2: ECD2B.ch
 Acq On : 05 Feb 2024 09:52
 Operator : YP\AJ
 Sample : AR1242CCC500
 Misc :
 ALS Vial : 4 Sample Multiplier: 1

Instrument :
 ECD_Q
ClientSampleId :
 AR1242CCC500

Integration File signal 1: autoint1.e
 Integration File signal 2: autoint2.e
 Quant Time: Feb 05 10:44:03 2024
 Quant Method : Z:\pestpcbsrv\HPCHEM1\ECD_Q\Method\PQ011724.M
 Quant Title : GC EXTRACTABLES
 QLast Update : Thu Jan 18 00:09:27 2024
 Response via : Initial Calibration
 Integrator: ChemStation

Volume Inj. : 2 µl
 Signal #1 Phase : ZB-MR1 Signal #2 Phase: ZB-MR2
 Signal #1 Info : 30Mx0.32mmx 0.50µ Signal #2 Info : 30M x 0.32mm x 0.25µm

| Compound | RT#1 | RT#2 | Resp#1 | Resp#2 | ng/ml | ng/ml |
|-----------------------------|-------|-------|----------|----------|---------|---------|
| ----- | | | | | | |
| System Monitoring Compounds | | | | | | |
| 1) SA Tetrachlo... | 3.475 | 2.745 | 180.4E6 | 332.1E6 | 48.425 | 49.738 |
| 2) SA Decachlor... | 8.792 | 7.521 | 138.2E6 | 331.1E6 | 44.712 | 45.554 |
| Target Compounds | | | | | | |
| 16) L4 AR-1242-1 | 4.600 | 3.744 | 45203688 | 95395055 | 445.185 | 447.392 |
| 17) L4 AR-1242-2 | 4.619 | 3.759 | 66028945 | 136.1E6 | 445.909 | 468.003 |
| 18) L4 AR-1242-3 | 4.678 | 3.919 | 42211314 | 74227618 | 443.058 | 459.204 |
| 19) L4 AR-1242-4 | 4.771 | 4.005 | 34110219 | 70449401 | 442.558 | 461.645 |
| 20) L4 AR-1242-5 | 5.501 | 4.500 | 37625019 | 92880519 | 458.048 | 456.698 |
| ----- | | | | | | |

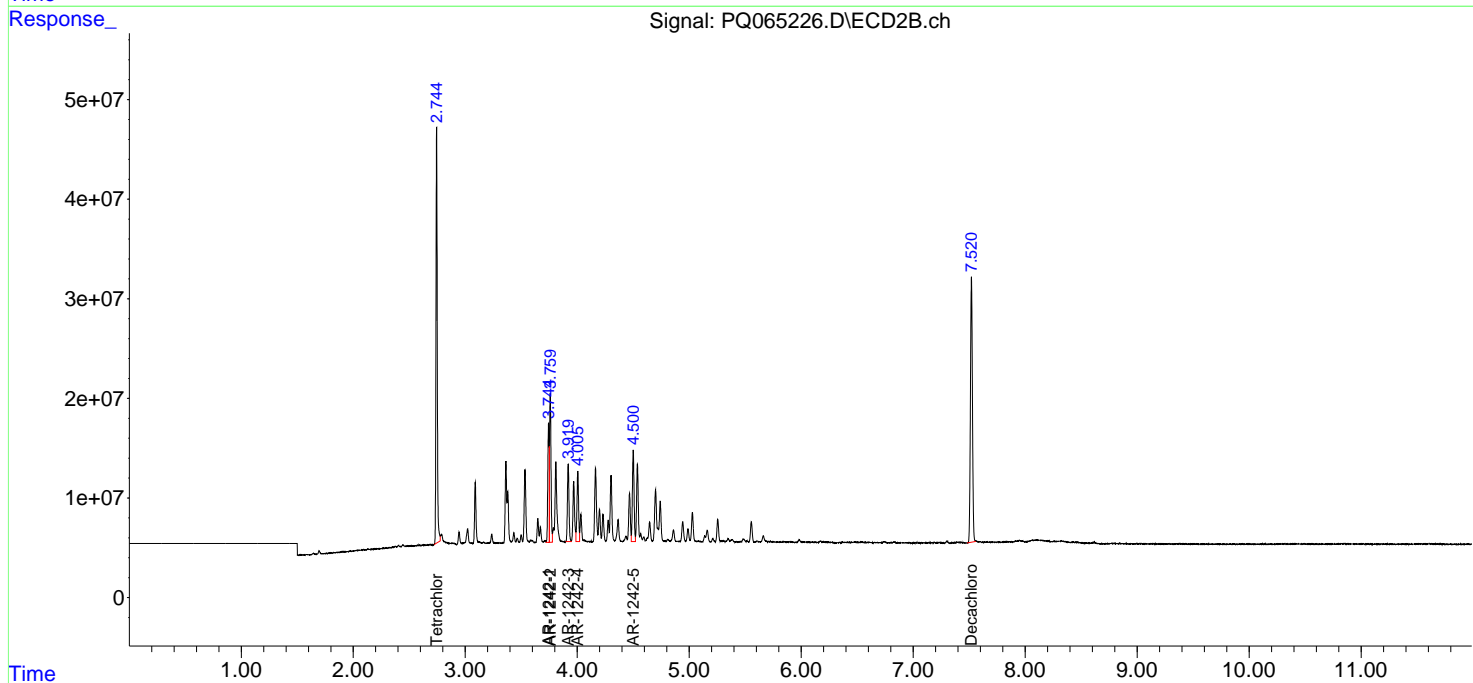
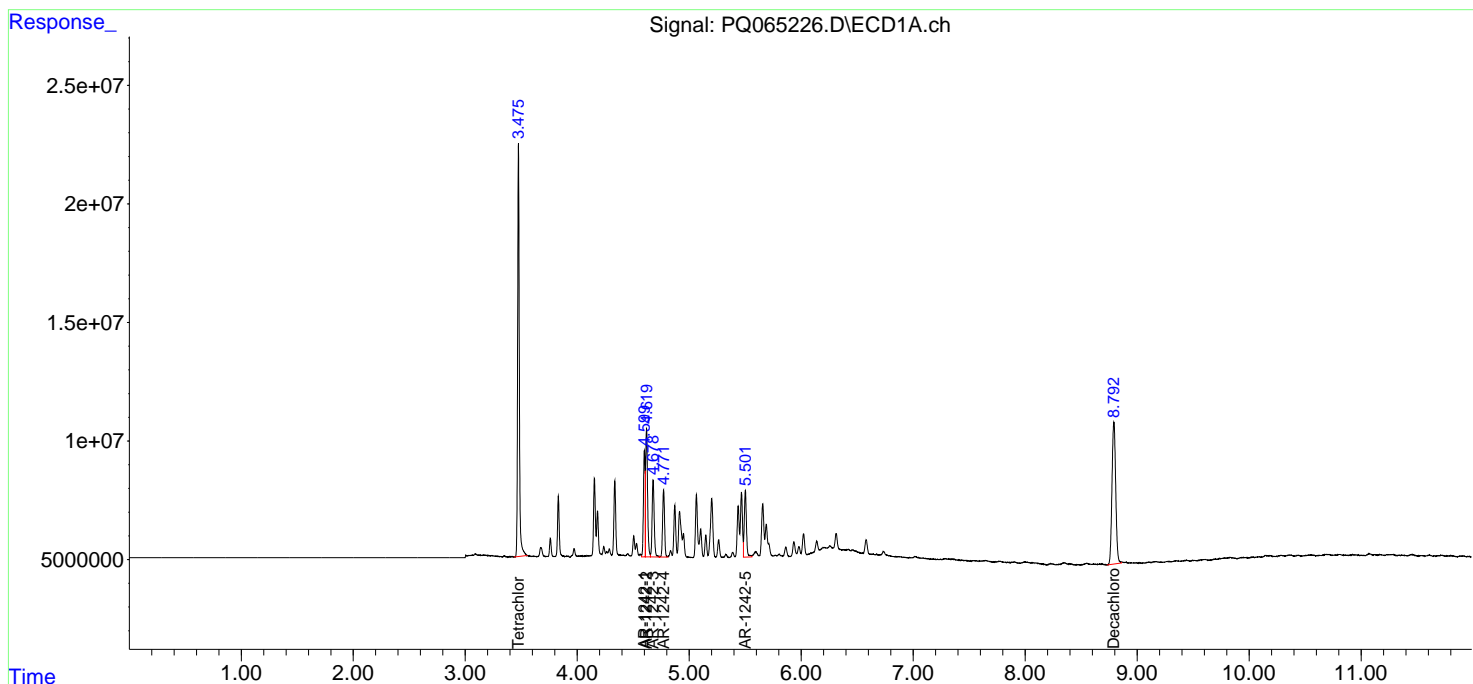
(f)=RT Delta > 1/2 Window (#)=Amounts differ by > 25% (m)=manual int.

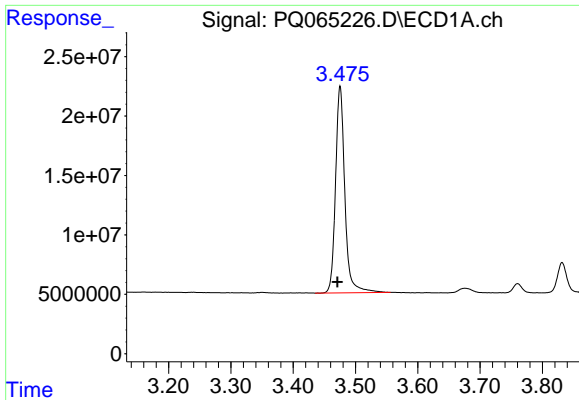
Data Path : Z:\pestpcbsrv\HPCHEM1\ECD_Q\Data\PQ020524\
 Data File : PQ065226.D
 Signal(s) : Signal #1: ECD1A.ch Signal #2: ECD2B.ch
 Acq On : 05 Feb 2024 09:52
 Operator : YP\AJ
 Sample : AR1242CCC500
 Misc :
 ALS Vial : 4 Sample Multiplier: 1

Instrument :
 ECD_Q
 ClientSampleId :
 AR1242CCC500

Integration File signal 1: autoint1.e
 Integration File signal 2: autoint2.e
 Quant Time: Feb 05 10:44:03 2024
 Quant Method : Z:\pestpcbsrv\HPCHEM1\ECD_Q\Method\PQ011724.M
 Quant Title : GC EXTRACTABLES
 QLast Update : Thu Jan 18 00:09:27 2024
 Response via : Initial Calibration
 Integrator: ChemStation

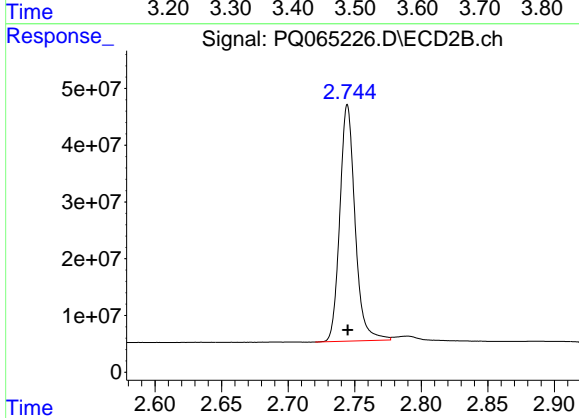
Volume Inj. : 2 µl
 Signal #1 Phase : ZB-MR1 Signal #2 Phase: ZB-MR2
 Signal #1 Info : 30Mx0.32mmx 0.50µ Signal #2 Info : 30M x 0.32mm x 0.25µm



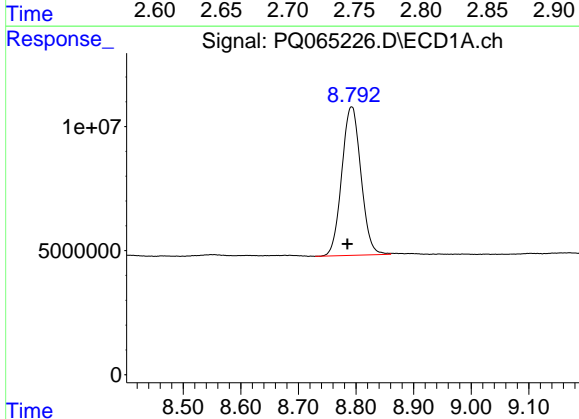


#1 Tetrachloro-m-xylene
R.T.: 3.475 min
Delta R.T.: 0.004 min
Response: 180398661
Conc: 48.43 ng/ml

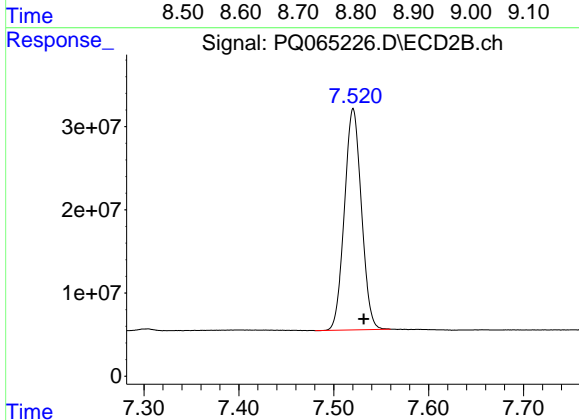
Instrument :
ECD_Q
ClientSampleId :
AR1242CCC500



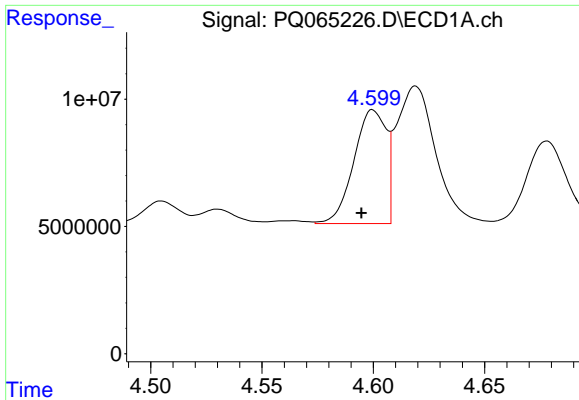
#1 Tetrachloro-m-xylene
R.T.: 2.745 min
Delta R.T.: 0.000 min
Response: 332127205
Conc: 49.74 ng/ml



#2 Decachlorobiphenyl
R.T.: 8.792 min
Delta R.T.: 0.007 min
Response: 138180608
Conc: 44.71 ng/ml



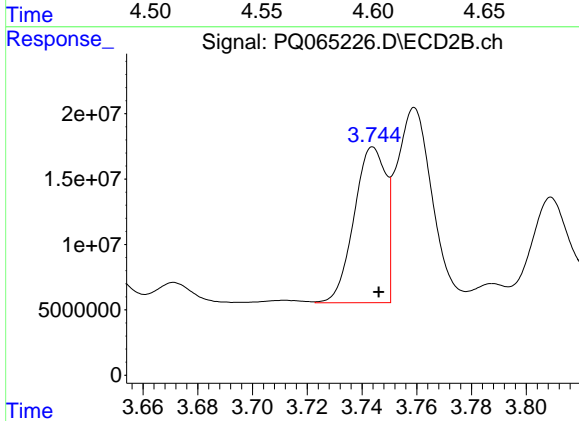
#2 Decachlorobiphenyl
R.T.: 7.521 min
Delta R.T.: -0.011 min
Response: 331060961
Conc: 45.55 ng/ml



#16 AR-1242-1

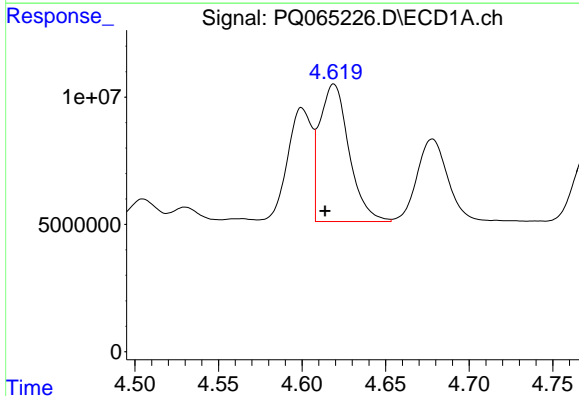
R.T.: 4.600 min
 Delta R.T.: 0.005 min
 Response: 45203688
 Conc: 445.18 ng/ml

Instrument :
 ECD_Q
 ClientSampleId :
 AR1242CCC500



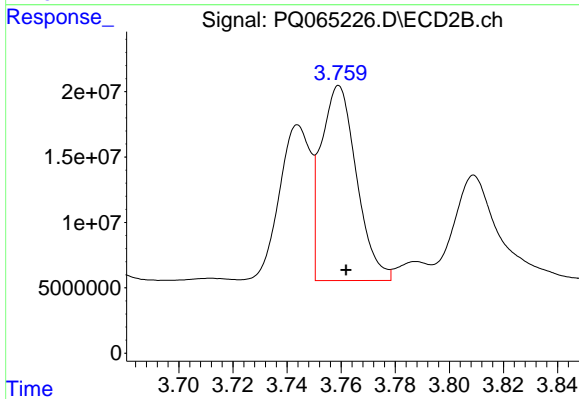
#16 AR-1242-1

R.T.: 3.744 min
 Delta R.T.: -0.002 min
 Response: 95395055
 Conc: 447.39 ng/ml



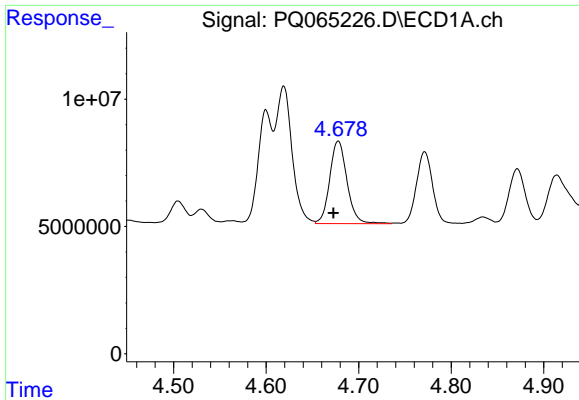
#17 AR-1242-2

R.T.: 4.619 min
 Delta R.T.: 0.005 min
 Response: 66028945
 Conc: 445.91 ng/ml



#17 AR-1242-2

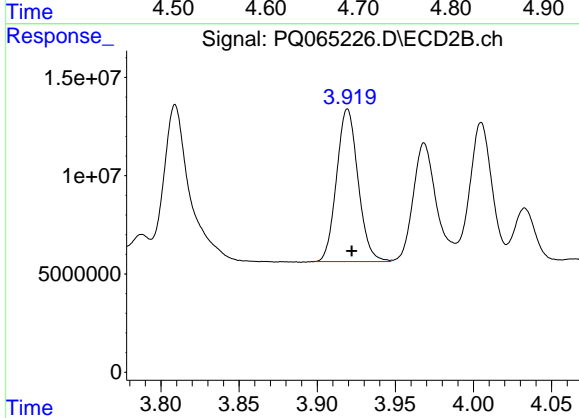
R.T.: 3.759 min
 Delta R.T.: -0.003 min
 Response: 136065359
 Conc: 468.00 ng/ml



#18 AR-1242-3

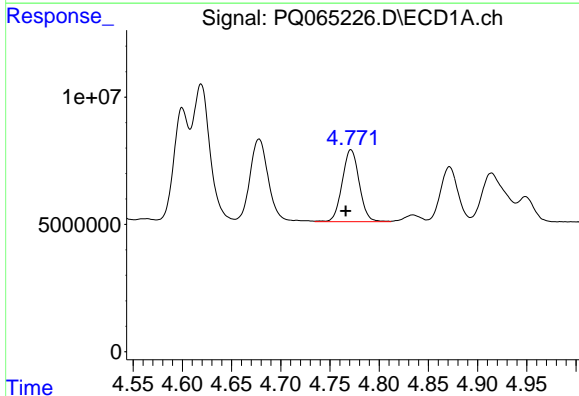
R.T.: 4.678 min
 Delta R.T.: 0.005 min
 Response: 42211314
 Conc: 443.06 ng/ml

Instrument :
 ECD_Q
 ClientSampleId :
 AR1242CCC500



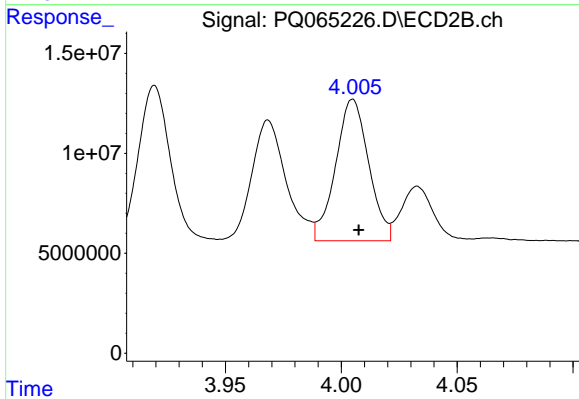
#18 AR-1242-3

R.T.: 3.919 min
 Delta R.T.: -0.003 min
 Response: 74227618
 Conc: 459.20 ng/ml



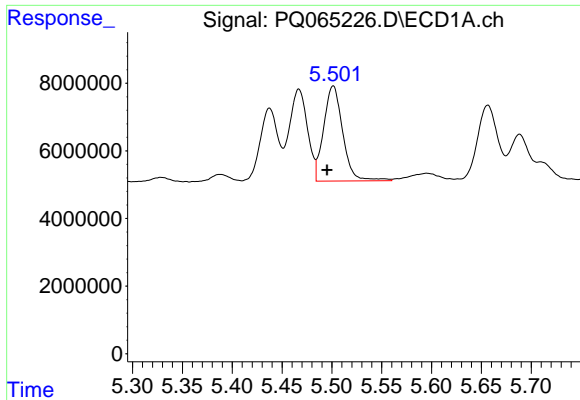
#19 AR-1242-4

R.T.: 4.771 min
 Delta R.T.: 0.005 min
 Response: 34110219
 Conc: 442.56 ng/ml



#19 AR-1242-4

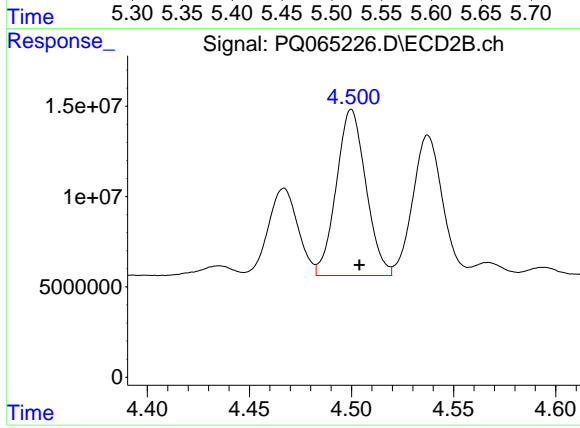
R.T.: 4.005 min
 Delta R.T.: -0.003 min
 Response: 70449401
 Conc: 461.64 ng/ml



#20 AR-1242-5

R.T.: 5.501 min
Delta R.T.: 0.006 min
Response: 37625019
Conc: 458.05 ng/ml

Instrument :
ECD_Q
ClientSampleId :
AR1242CCC500



#20 AR-1242-5

R.T.: 4.500 min
Delta R.T.: -0.004 min
Response: 92880519
Conc: 456.70 ng/ml