

Data Path : Z:\pestpcbsrv\HPCHEM1\ECD_Q\Data\PQ020821\
 Data File : PQ052070.D
 Signal(s) : Signal #1: ECD1A.ch Signal #2: ECD2B.ch
 Acq On : 08 Feb 2021 16:12
 Operator : DD\AJ
 Sample : PQ020821ICV500
 Misc :
 ALS Vial : 15 Sample Multiplier: 1

Instrument :
 ECD_Q
 ClientSampleId :
 ICVPQ020821

Integration File signal 1: autoint1.e
 Integration File signal 2: autoint2.e
 Quant Time: Feb 09 06:28:25 2021
 Quant Method : Z:\pestpcbsrv\HPCHEM1\ECD_Q\Method\PQ020821.M
 Quant Title : GC EXTRACTABLES
 QLast Update : Tue Feb 09 06:20:03 2021
 Response via : Initial Calibration
 Integrator: ChemStation

Volume Inj. : 2 µl
 Signal #1 Phase : ZB-MR1 Signal #2 Phase: ZB-MR2
 Signal #1 Info : 30Mx0.32mmx 0.50µ Signal #2 Info : 30M x 0.32mm x 0.25µm

Compound	RT#1	RT#2	Resp#1	Resp#2	ng/ml	ng/ml

System Monitoring Compounds						
1) SA Tetrachlo...	5.239	4.249	1347.8E6	475.0E6	54.136	55.084
2) SA Decachlor...	11.433	9.596	905.7E6	366.9E6	52.492	53.784
Target Compounds						
3) L1 AR-1016-1	6.561	5.508	428.2E6	157.9E6	530.499	537.431
4) L1 AR-1016-2	6.584	5.528	648.3E6	226.6E6	541.073	541.417
5) L1 AR-1016-3	6.652	5.721	388.5E6	115.9E6	538.957	533.032
6) L1 AR-1016-4	6.760	5.771	322.4E6	91638974	536.379	532.286
7) L1 AR-1016-5	7.074	6.001	310.2E6	116.5E6	536.639	540.126
31) L7 AR-1260-1	8.248	7.098	522.0E6	215.4E6	531.673	541.760
32) L7 AR-1260-2	8.510	7.293	616.2E6	269.6E6	529.366	545.781
33) L7 AR-1260-3	8.877	7.450	459.9E6	245.7E6	542.860	535.525
34) L7 AR-1260-4	9.120	7.933	530.3E6	204.3E6	540.958	534.142
35) L7 AR-1260-5	9.467	8.179	1051.3E6	506.4E6	534.769	544.021

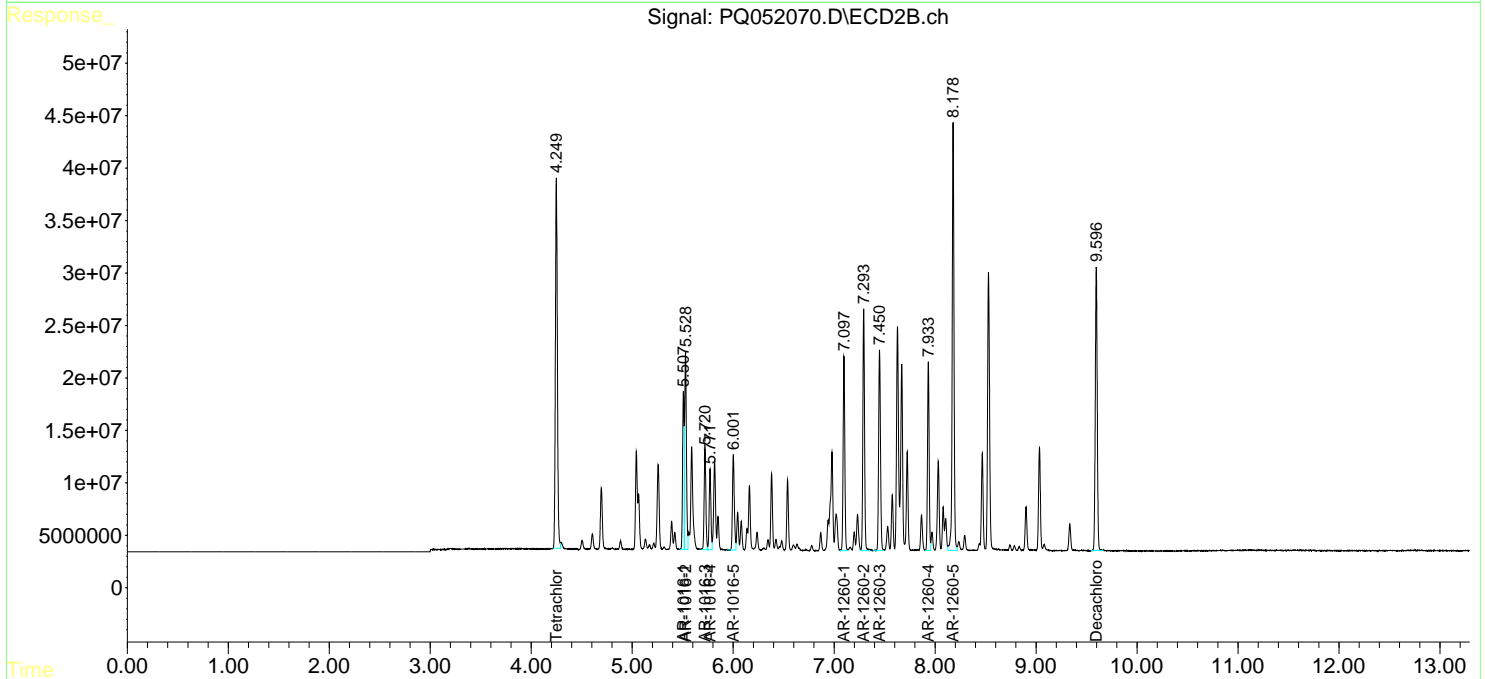
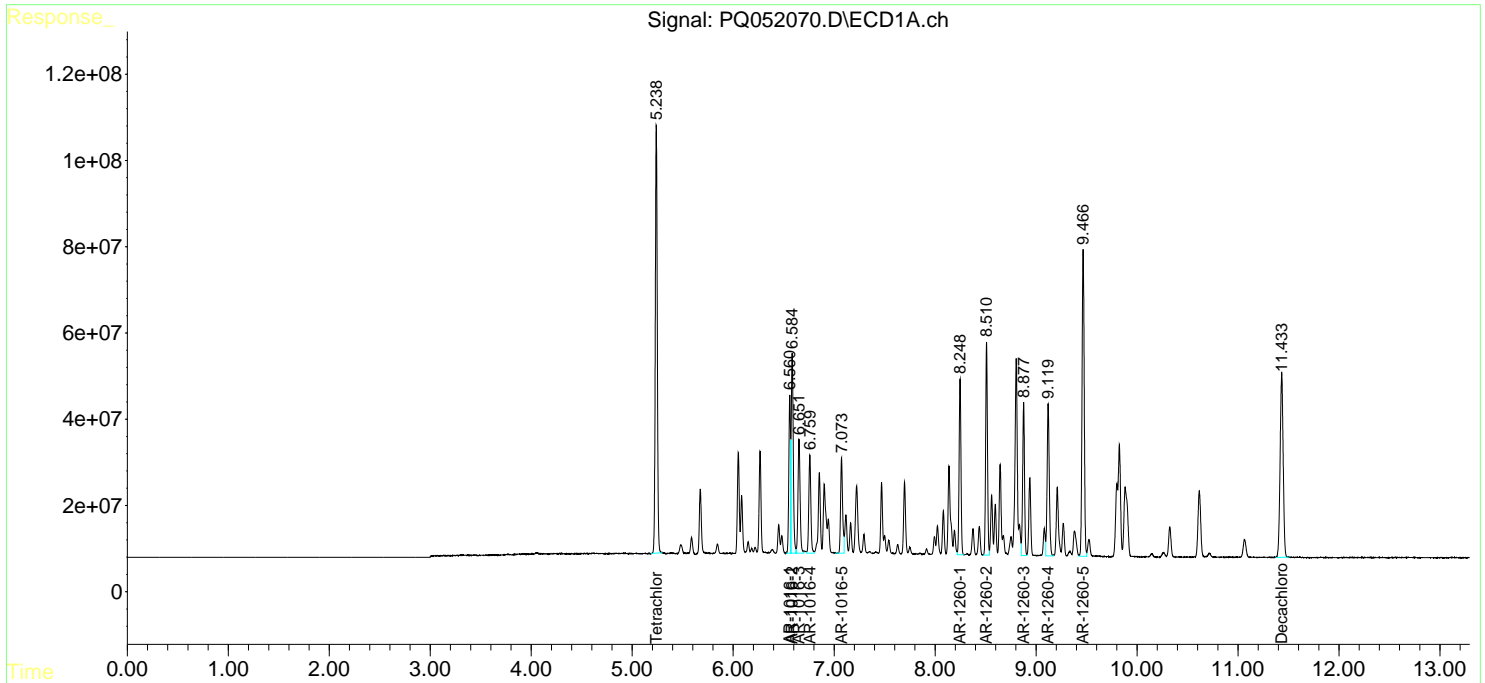
(f)=RT Delta > 1/2 Window (#)=Amounts differ by > 25% (m)=manual int.

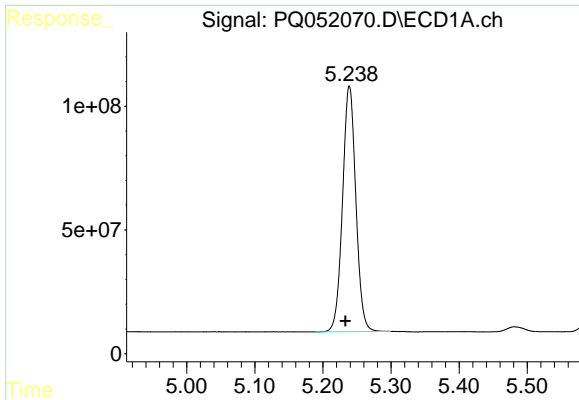
Data Path : Z:\pestpcbsrv\HPCHEM1\ECD_Q\Data\PQ020821\
 Data File : PQ052070.D
 Signal(s) : Signal #1: ECD1A.ch Signal #2: ECD2B.ch
 Acq On : 08 Feb 2021 16:12
 Operator : DD\AJ
 Sample : PQ020821ICV500
 Misc :
 ALS Vial : 15 Sample Multiplier: 1

Instrument :
 ECD_Q
Client Sampled :
 ICVPQ020821

Integration File signal 1: autoint1.e
 Integration File signal 2: autoint2.e
 Quant Time: Feb 09 06:28:25 2021
 Quant Method : Z:\pestpcbsrv\HPCHEM1\ECD_Q\Method\PQ020821.M
 Quant Title : GC EXTRACTABLES
 QLast Update : Tue Feb 09 06:20:03 2021
 Response via : Initial Calibration
 Integrator: ChemStation

Volume Inj. : 2 µl
 Signal #1 Phase : ZB-MR1 Signal #2 Phase: ZB-MR2
 Signal #1 Info : 30Mx0.32mmx 0.50µ Signal #2 Info : 30M x 0.32mm x 0.25µm

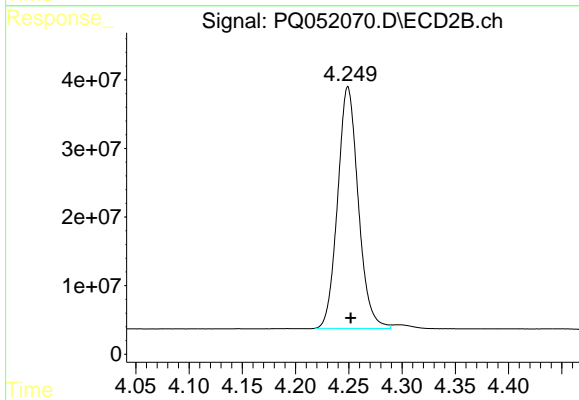




#1 Tetrachloro-m-xylene

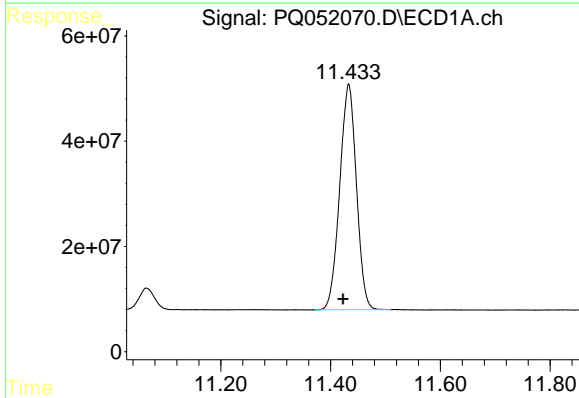
R.T.: 5.239 min
 Delta R.T.: 0.006 min
 Response: 1347847337
 Conc: 54.14 ng/ml

Instrument :
 ECD_Q
 ClientSampleId :
 ICVPQ020821



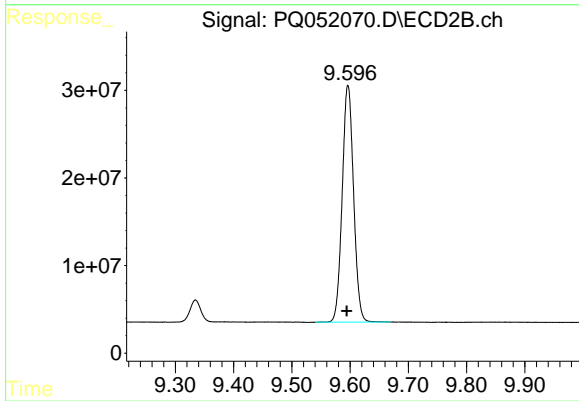
#1 Tetrachloro-m-xylene

R.T.: 4.249 min
 Delta R.T.: -0.003 min
 Response: 474972351
 Conc: 55.08 ng/ml



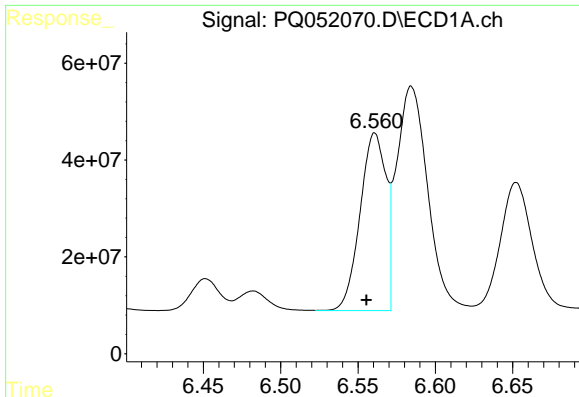
#2 Decachlorobiphenyl

R.T.: 11.433 min
 Delta R.T.: 0.010 min
 Response: 905658910
 Conc: 52.49 ng/ml



#2 Decachlorobiphenyl

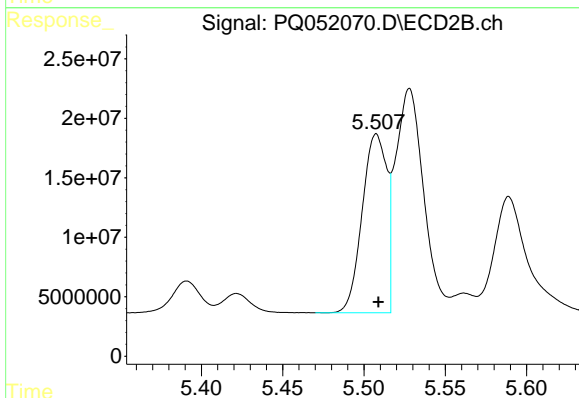
R.T.: 9.596 min
 Delta R.T.: 0.002 min
 Response: 366853400
 Conc: 53.78 ng/ml



#3 AR-1016-1

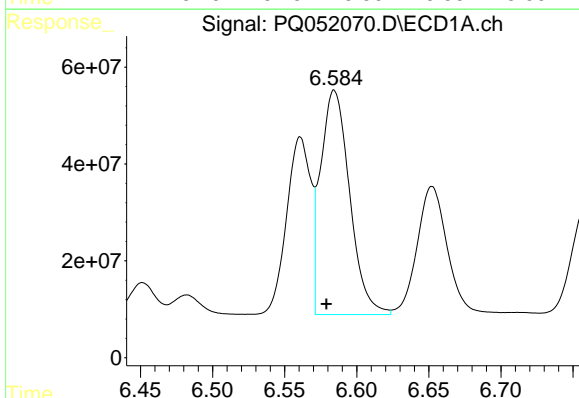
R.T.: 6.561 min
Delta R.T.: 0.005 min
Response: 428180047
Conc: 530.50 ng/ml

Instrument :
ECD_Q
ClientSampled :
ICVPQ020821



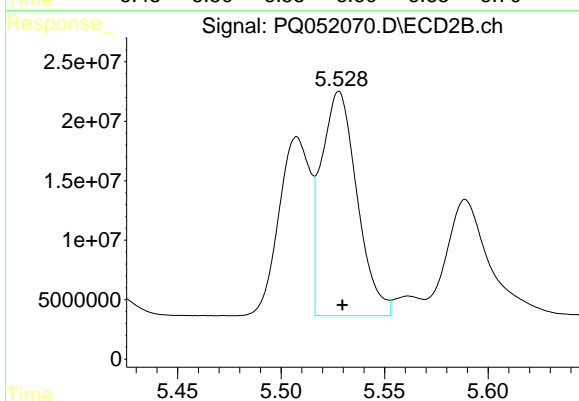
#3 AR-1016-1

R.T.: 5.508 min
Delta R.T.: -0.001 min
Response: 157909825
Conc: 537.43 ng/ml



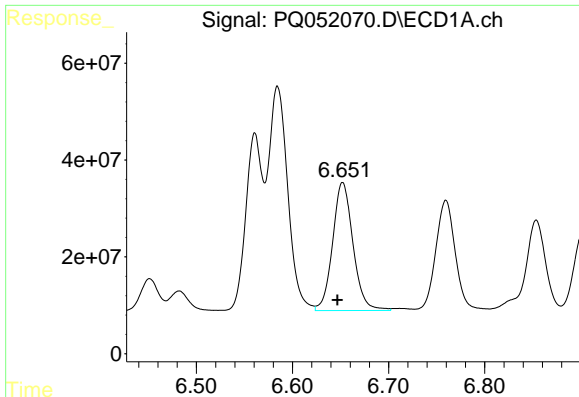
#4 AR-1016-2

R.T.: 6.584 min
Delta R.T.: 0.006 min
Response: 648324832
Conc: 541.07 ng/ml



#4 AR-1016-2

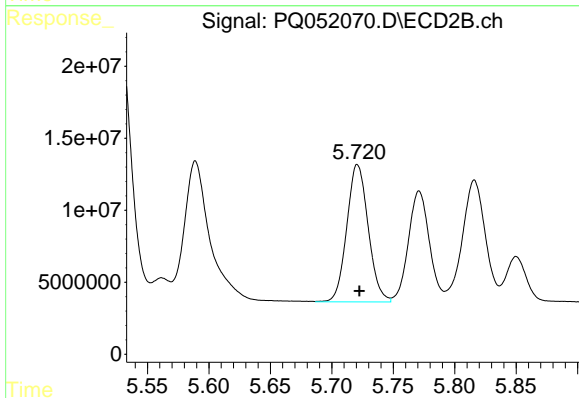
R.T.: 5.528 min
Delta R.T.: -0.002 min
Response: 226580010
Conc: 541.42 ng/ml



#5 AR-1016-3

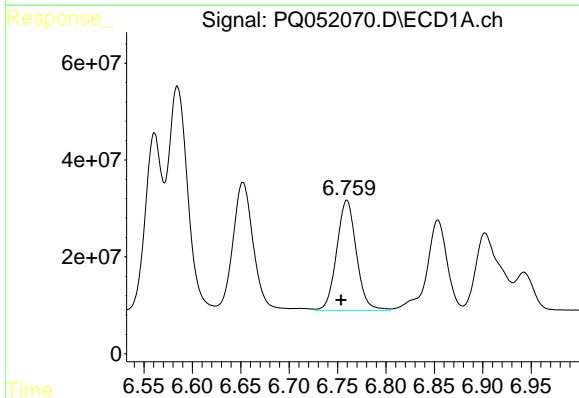
R.T.: 6.652 min
Delta R.T.: 0.006 min
Response: 388477155
Conc: 538.96 ng/ml

Instrument :
ECD_Q
ClientSampleId :
ICVPQ020821



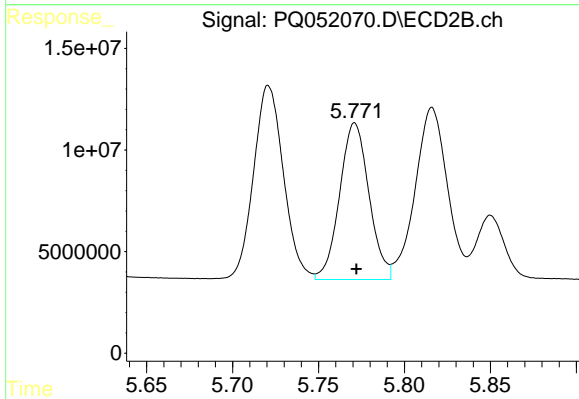
#5 AR-1016-3

R.T.: 5.721 min
Delta R.T.: -0.002 min
Response: 115863919
Conc: 533.03 ng/ml



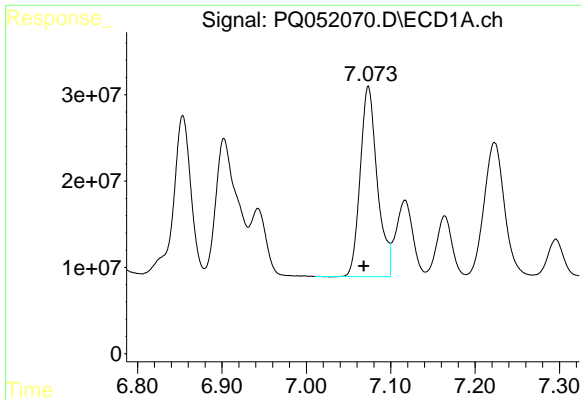
#6 AR-1016-4

R.T.: 6.760 min
Delta R.T.: 0.006 min
Response: 322355598
Conc: 536.38 ng/ml



#6 AR-1016-4

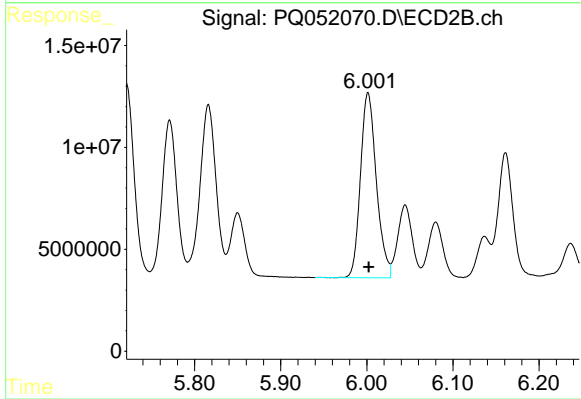
R.T.: 5.771 min
Delta R.T.: -0.001 min
Response: 91638974
Conc: 532.29 ng/ml



#7 AR-1016-5

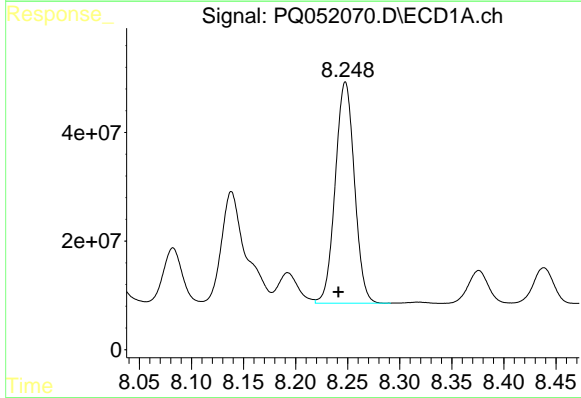
R.T.: 7.074 min
Delta R.T.: 0.006 min
Response: 310168325
Conc: 536.64 ng/ml

Instrument :
ECD_Q
ClientSampled :
ICVPQ020821



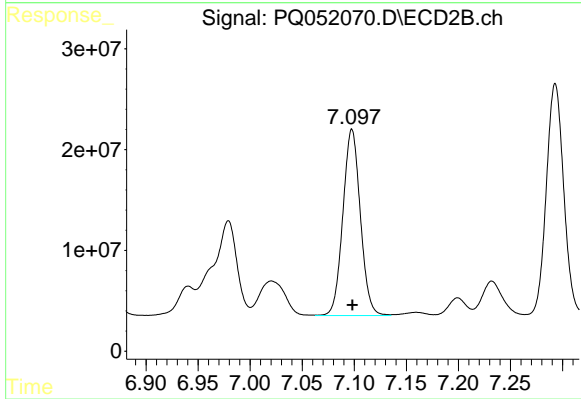
#7 AR-1016-5

R.T.: 6.001 min
Delta R.T.: 0.000 min
Response: 116451974
Conc: 540.13 ng/ml



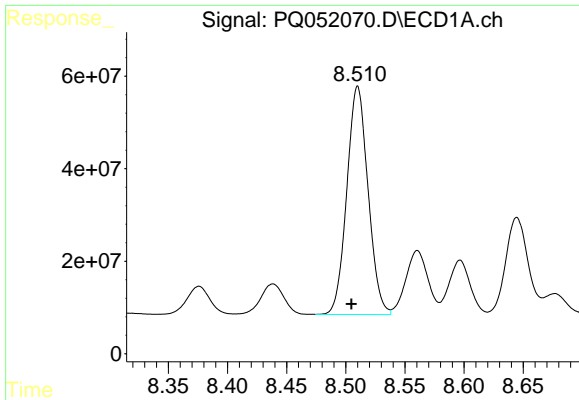
#31 AR-1260-1

R.T.: 8.248 min
Delta R.T.: 0.007 min
Response: 521958568
Conc: 531.67 ng/ml



#31 AR-1260-1

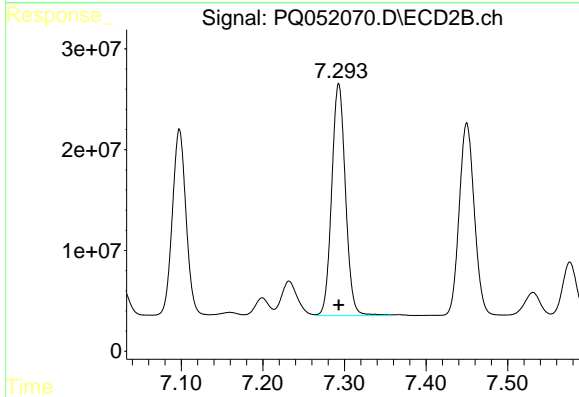
R.T.: 7.098 min
Delta R.T.: 0.000 min
Response: 215412759
Conc: 541.76 ng/ml



#32 AR-1260-2

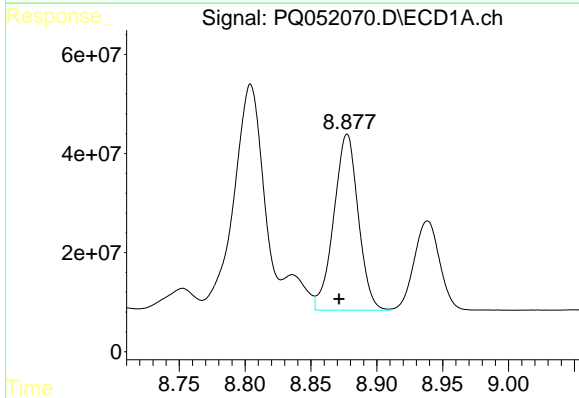
R.T.: 8.510 min
 Delta R.T.: 0.005 min
 Response: 616162819
 Conc: 529.37 ng/ml

Instrument :
 ECD_Q
 ClientSampleId :
 ICVPQ020821



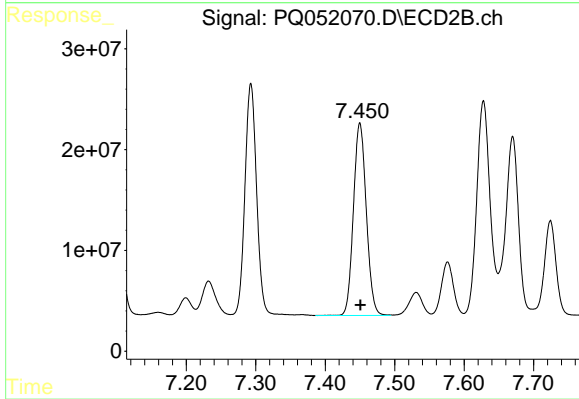
#32 AR-1260-2

R.T.: 7.293 min
 Delta R.T.: 0.000 min
 Response: 269633830
 Conc: 545.78 ng/ml



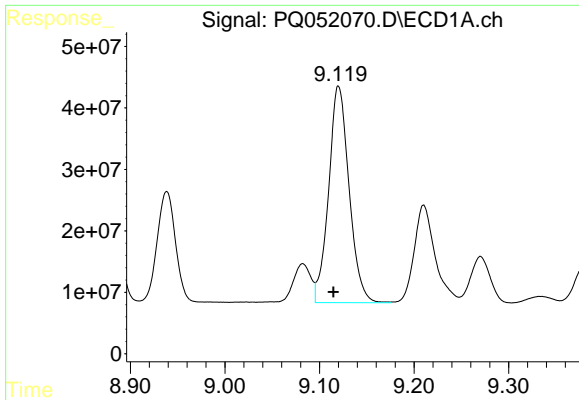
#33 AR-1260-3

R.T.: 8.877 min
 Delta R.T.: 0.006 min
 Response: 459901419
 Conc: 542.86 ng/ml



#33 AR-1260-3

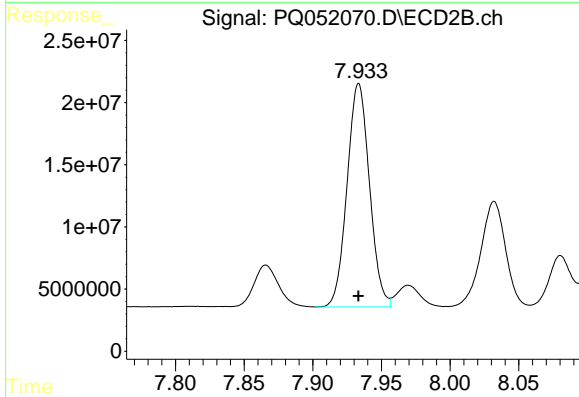
R.T.: 7.450 min
 Delta R.T.: 0.000 min
 Response: 245677405
 Conc: 535.52 ng/ml



#34 AR-1260-4

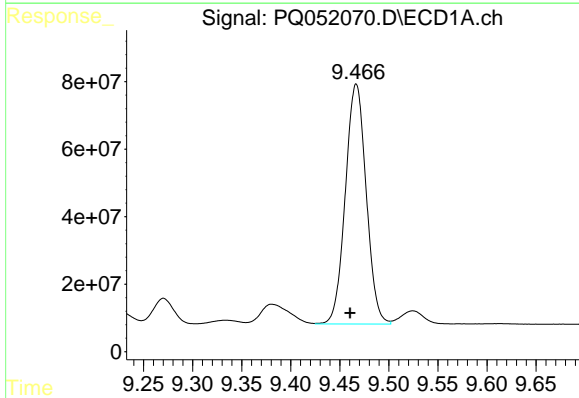
R.T.: 9.120 min
 Delta R.T.: 0.005 min
 Response: 530343185
 Conc: 540.96 ng/ml

Instrument :
 ECD_Q
ClientSampled :
 ICVPQ020821



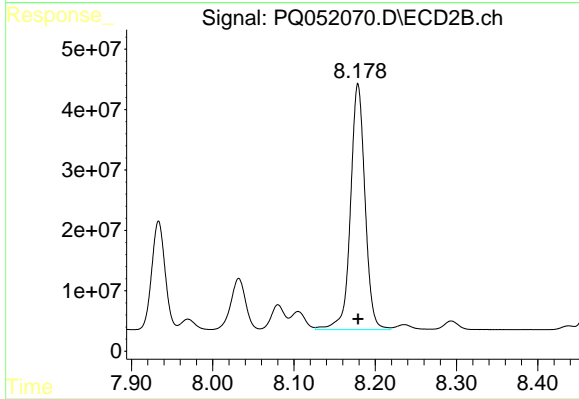
#34 AR-1260-4

R.T.: 7.933 min
 Delta R.T.: 0.000 min
 Response: 204312567
 Conc: 534.14 ng/ml



#35 AR-1260-5

R.T.: 9.467 min
 Delta R.T.: 0.006 min
 Response: 1051317376
 Conc: 534.77 ng/ml



#35 AR-1260-5

R.T.: 8.179 min
 Delta R.T.: 0.000 min
 Response: 506373480
 Conc: 544.02 ng/ml