

Data Path : Z:\pestpcbsrv\HPCHEM1\ECD_Q\Data\PQ020821\
 Data File : PQ052075.D
 Signal(s) : Signal #1: ECD1A.ch Signal #2: ECD2B.ch
 Acq On : 08 Feb 2021 17:34
 Operator : DD\AJ
 Sample : PB134487BL
 Misc :
 ALS Vial : 9 Sample Multiplier: 1

Instrument :
 ECD_Q
 ClientSampleId :
 PB134487BL

Integration File signal 1: autoint1.e
 Integration File signal 2: autoint2.e
 Quant Time: Feb 09 06:32:00 2021
 Quant Method : Z:\pestpcbsrv\HPCHEM1\ECD_Q\Method\PQ020821.M
 Quant Title : GC EXTRACTABLES
 QLast Update : Tue Feb 09 06:20:03 2021
 Response via : Initial Calibration
 Integrator: ChemStation

Volume Inj. : 2 µl
 Signal #1 Phase : ZB-MR1 Signal #2 Phase: ZB-MR2
 Signal #1 Info : 30Mx0.32mmx 0.50µ Signal #2 Info : 30M x 0.32mm x 0.25µm

Compound	RT#1	RT#2	Resp#1	Resp#2	ng/ml	ng/ml

System Monitoring Compounds						
1) SA Tetrachlo...	5.232	4.251	508.3E6	173.1E6	20.416	20.076
2) SA Decachlor...	11.419	9.594	376.1E6	144.1E6	21.796	21.125

Target Compounds

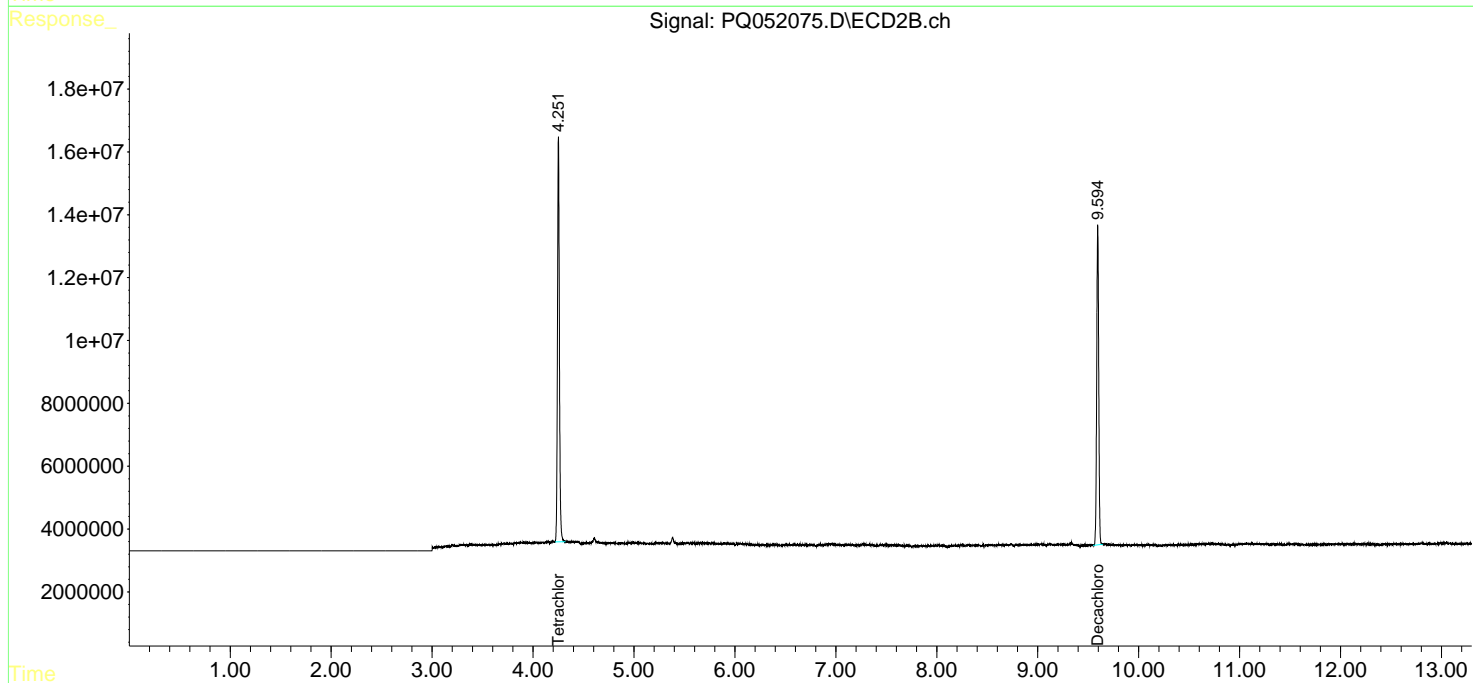
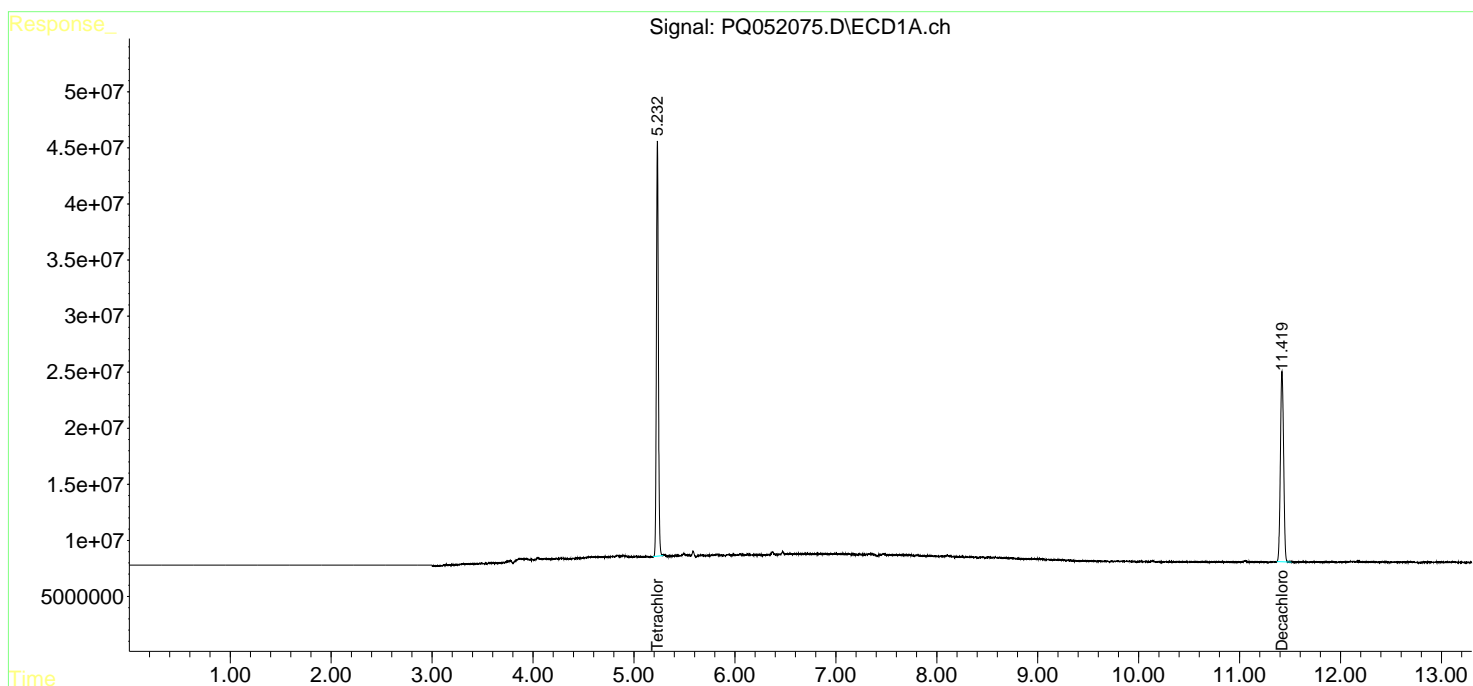
 (f)=RT Delta > 1/2 Window (#)=Amounts differ by > 25% (m)=manual int.

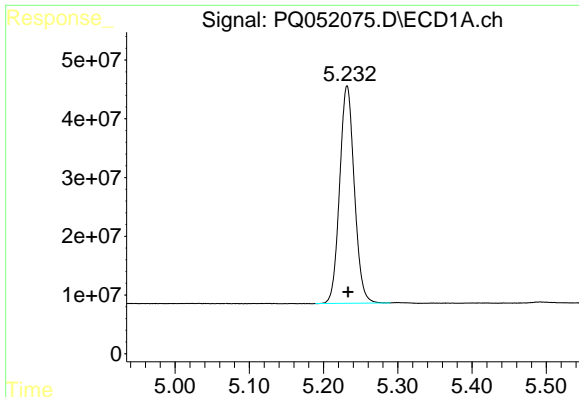
Data Path : Z:\pestpcbsrv\HPCHEM1\ECD_Q\Data\PQ020821\
 Data File : PQ052075.D
 Signal(s) : Signal #1: ECD1A.ch Signal #2: ECD2B.ch
 Acq On : 08 Feb 2021 17:34
 Operator : DD\AJ
 Sample : PB134487BL
 Misc :
 ALS Vial : 9 Sample Multiplier: 1

Instrument :
 ECD_Q
ClientSampled :
 PB134487BL

Integration File signal 1: autoint1.e
 Integration File signal 2: autoint2.e
 Quant Time: Feb 09 06:32:00 2021
 Quant Method : Z:\pestpcbsrv\HPCHEM1\ECD_Q\Method\PQ020821.M
 Quant Title : GC EXTRACTABLES
 QLast Update : Tue Feb 09 06:20:03 2021
 Response via : Initial Calibration
 Integrator: ChemStation

Volume Inj. : 2 µl
 Signal #1 Phase : ZB-MR1 Signal #2 Phase: ZB-MR2
 Signal #1 Info : 30Mx0.32mmx 0.50µm Signal #2 Info : 30M x 0.32mm x 0.25µm

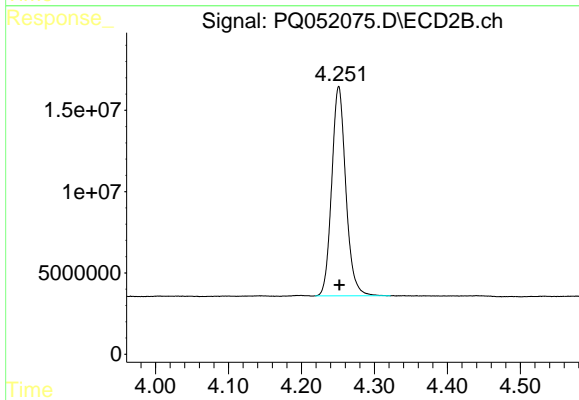




#1 Tetrachloro-m-xylene

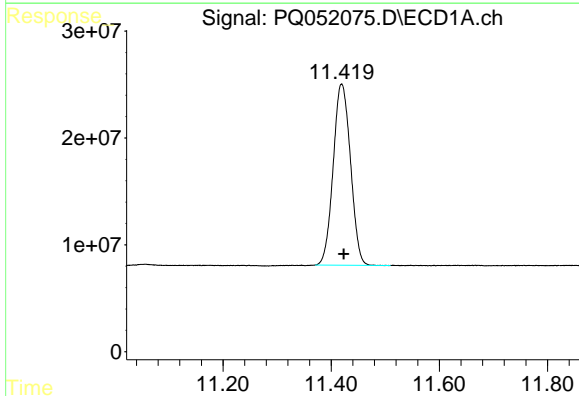
R.T.: 5.232 min
 Delta R.T.: -0.001 min
 Response: 508316287
 Conc: 20.42 ng/ml

Instrument :
 ECD_Q
 ClientSampleId :
 PB134487BL



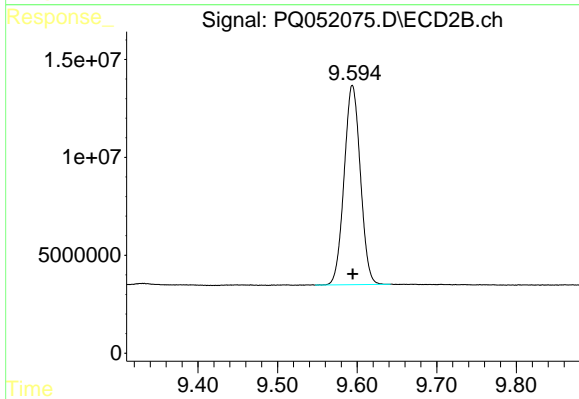
#1 Tetrachloro-m-xylene

R.T.: 4.251 min
 Delta R.T.: 0.000 min
 Response: 173111449
 Conc: 20.08 ng/ml



#2 Decachlorobiphenyl

R.T.: 11.419 min
 Delta R.T.: -0.004 min
 Response: 376052989
 Conc: 21.80 ng/ml



#2 Decachlorobiphenyl

R.T.: 9.594 min
 Delta R.T.: 0.000 min
 Response: 144093240
 Conc: 21.13 ng/ml