

Data Path : Z:\pestpcbsrv\HPCHEM1\ECD_Q\Data\PQ020821\
 Data File : PQ052076.D
 Signal(s) : Signal #1: ECD1A.ch Signal #2: ECD2B.ch
 Acq On : 08 Feb 2021 17:50
 Operator : DD\AJ
 Sample : PB134487BS
 Misc :
 ALS Vial : 10 Sample Multiplier: 1

Instrument :
 ECD_Q
 ClientSampleId :
 PB134487BS

Integration File signal 1: autoint1.e
 Integration File signal 2: autoint2.e
 Quant Time: Feb 09 06:32:31 2021
 Quant Method : Z:\pestpcbsrv\HPCHEM1\ECD_Q\Method\PQ020821.M
 Quant Title : GC EXTRACTABLES
 QLast Update : Tue Feb 09 06:20:03 2021
 Response via : Initial Calibration
 Integrator: ChemStation

Volume Inj. : 2 µl
 Signal #1 Phase : ZB-MR1 Signal #2 Phase: ZB-MR2
 Signal #1 Info : 30Mx0.32mmx 0.50µ Signal #2 Info : 30M x 0.32mm x 0.25µm

Compound	RT#1	RT#2	Resp#1	Resp#2	ng/ml	ng/ml

System Monitoring Compounds						
1) SA Tetrachlo...	5.232	4.251	507.7E6	167.5E6	20.392	19.429
2) SA Decachlor...	11.421	9.594	378.4E6	144.3E6	21.932	21.149
Target Compounds						
3) L1 AR-1016-1	6.554	5.509	371.6E6	134.0E6	460.398	455.937
4) L1 AR-1016-2	6.578	5.530	557.7E6	190.2E6	465.443	454.548
5) L1 AR-1016-3	6.646	5.722	333.7E6	97698568	462.998	449.462
6) L1 AR-1016-4	6.754	5.772	275.6E6	75279208	458.580	437.261
7) L1 AR-1016-5	7.066	6.002	260.6E6	96228635	450.852	446.326
31) L7 AR-1260-1	8.241	7.098	487.9E6	192.3E6	496.942	483.560
32) L7 AR-1260-2	8.504	7.293	567.1E6	240.6E6	487.229	486.998
33) L7 AR-1260-3	8.870	7.450	353.0E6	220.9E6	416.659	481.467
34) L7 AR-1260-4	9.114	7.933	434.5E6	155.8E6	443.231	407.237
35) L7 AR-1260-5	9.459	8.178	838.8E6	390.5E6	426.670	419.487

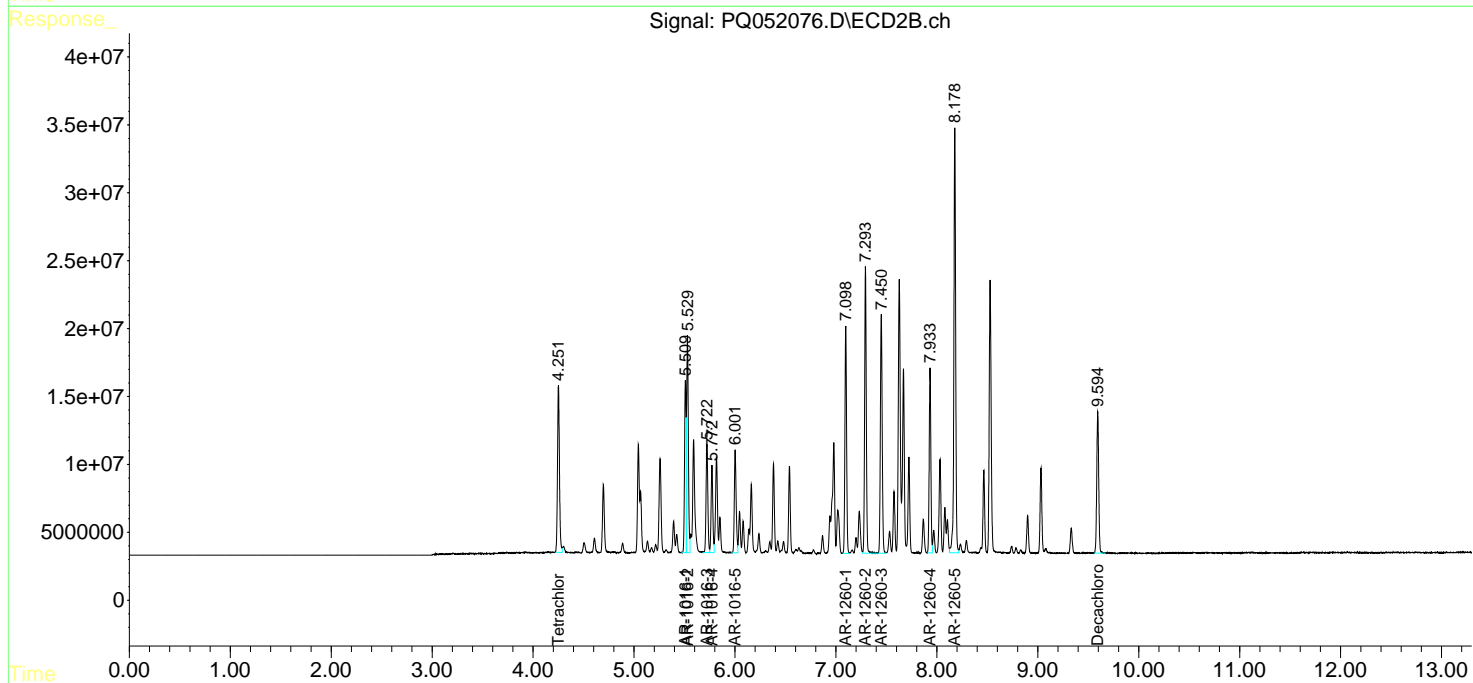
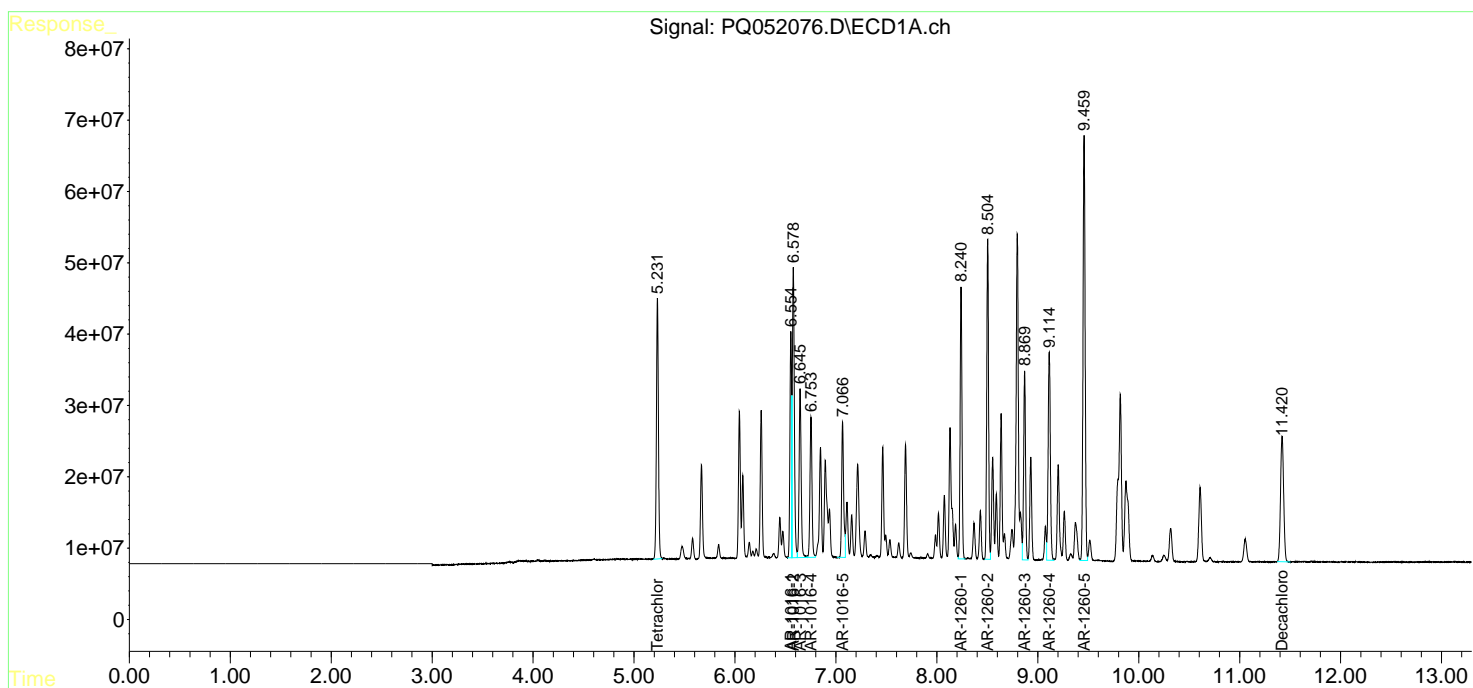
(f)=RT Delta > 1/2 Window (#)=Amounts differ by > 25% (m)=manual int.

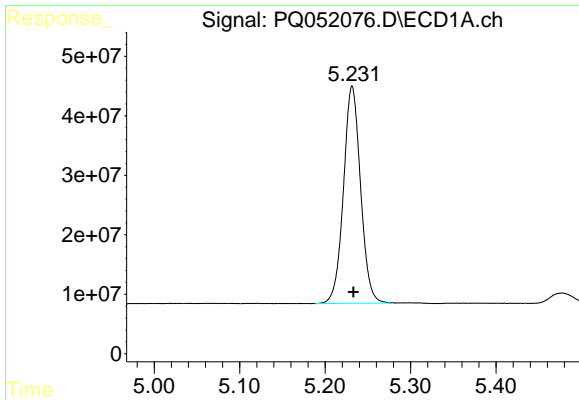
Data Path : Z:\pestpcbsrv\HPCHEM1\ECD_Q\Data\PQ020821\
 Data File : PQ052076.D
 Signal(s) : Signal #1: ECD1A.ch Signal #2: ECD2B.ch
 Acq On : 08 Feb 2021 17:50
 Operator : DD\AJ
 Sample : PB134487BS
 Misc :
 ALS Vial : 10 Sample Multiplier: 1

Instrument :
 ECD_Q
 ClientSampled :
 PB134487BS

Integration File signal 1: autoint1.e
 Integration File signal 2: autoint2.e
 Quant Time: Feb 09 06:32:31 2021
 Quant Method : Z:\pestpcbsrv\HPCHEM1\ECD_Q\Method\PQ020821.M
 Quant Title : GC EXTRACTABLES
 QLast Update : Tue Feb 09 06:20:03 2021
 Response via : Initial Calibration
 Integrator: ChemStation

Volume Inj. : 2 µl
 Signal #1 Phase : ZB-MR1 Signal #2 Phase: ZB-MR2
 Signal #1 Info : 30Mx0.32mmx 0.50µ Signal #2 Info : 30M x 0.32mm x 0.25µm

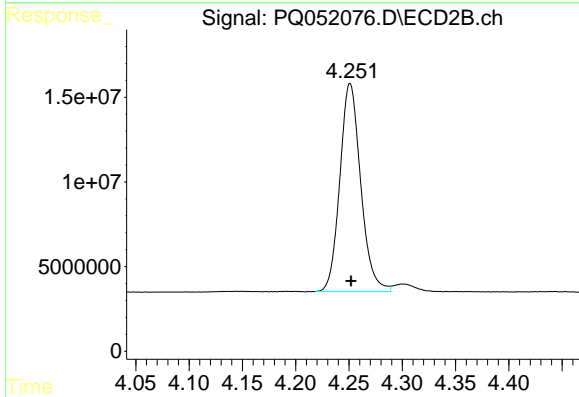




#1 Tetrachloro-m-xylene

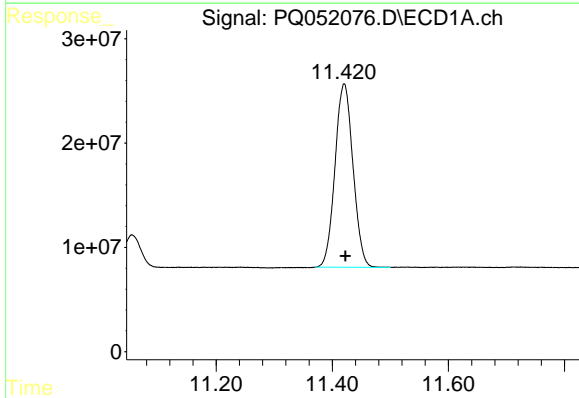
R.T.: 5.232 min
 Delta R.T.: -0.001 min
 Response: 507707709
 Conc: 20.39 ng/ml

Instrument :
 ECD_Q
 ClientSampleId :
 PB134487BS



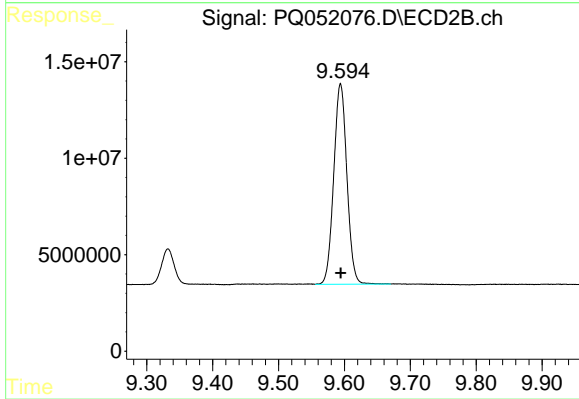
#1 Tetrachloro-m-xylene

R.T.: 4.251 min
 Delta R.T.: 0.000 min
 Response: 167528352
 Conc: 19.43 ng/ml



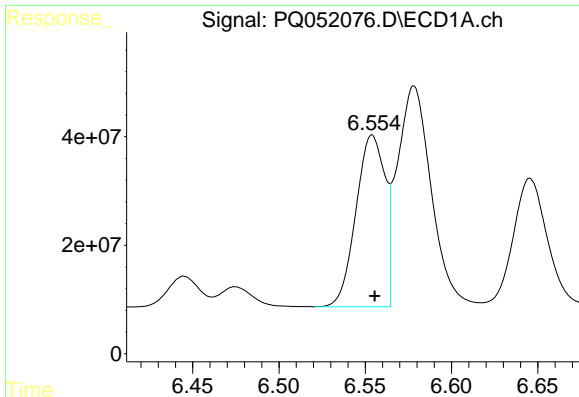
#2 Decachlorobiphenyl

R.T.: 11.421 min
 Delta R.T.: -0.002 min
 Response: 378397072
 Conc: 21.93 ng/ml



#2 Decachlorobiphenyl

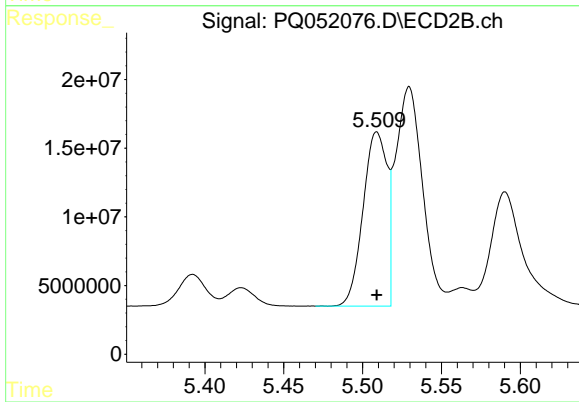
R.T.: 9.594 min
 Delta R.T.: 0.000 min
 Response: 144257569
 Conc: 21.15 ng/ml



#3 AR-1016-1

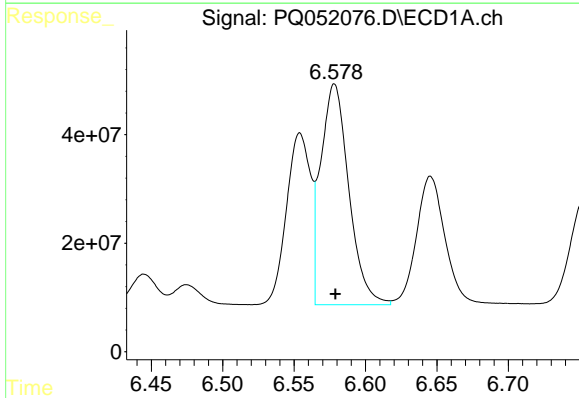
R.T.: 6.554 min
Delta R.T.: -0.001 min
Response: 371599907
Conc: 460.40 ng/ml

Instrument :
ECD_Q
ClientSampleId :
PB134487BS



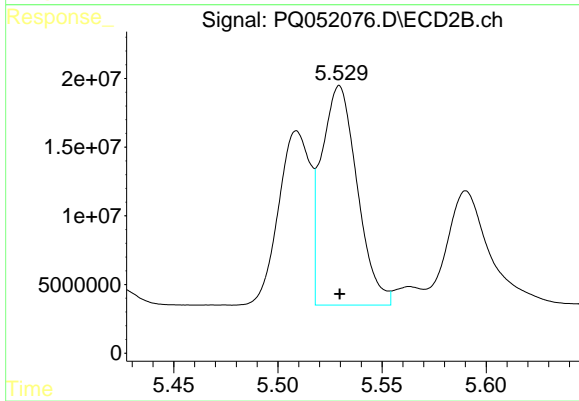
#3 AR-1016-1

R.T.: 5.509 min
Delta R.T.: 0.000 min
Response: 133964863
Conc: 455.94 ng/ml



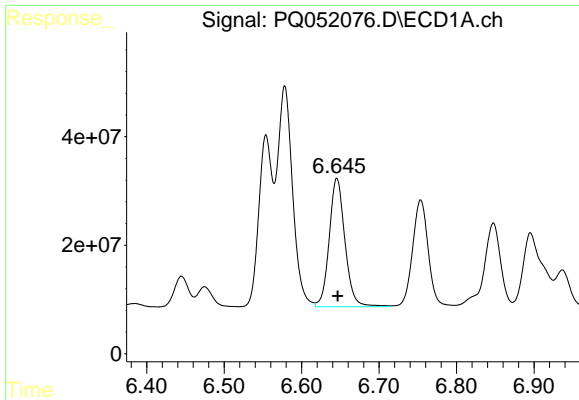
#4 AR-1016-2

R.T.: 6.578 min
Delta R.T.: 0.000 min
Response: 557703487
Conc: 465.44 ng/ml



#4 AR-1016-2

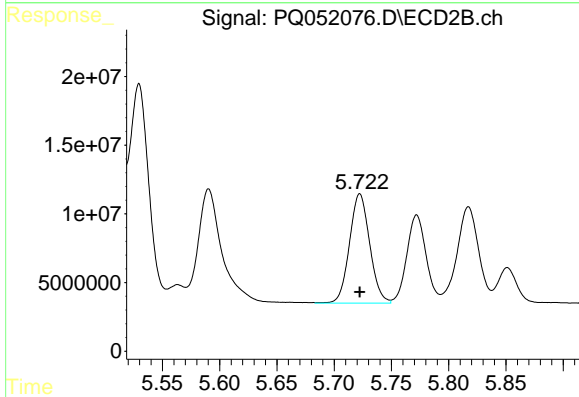
R.T.: 5.530 min
Delta R.T.: 0.000 min
Response: 190225857
Conc: 454.55 ng/ml



#5 AR-1016-3

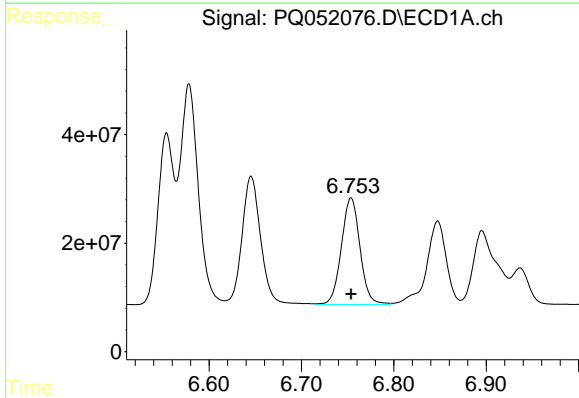
R.T.: 6.646 min
 Delta R.T.: -0.001 min
 Response: 333726202
 Conc: 463.00 ng/ml

Instrument :
 ECD_Q
 ClientSampled :
 PB134487BS



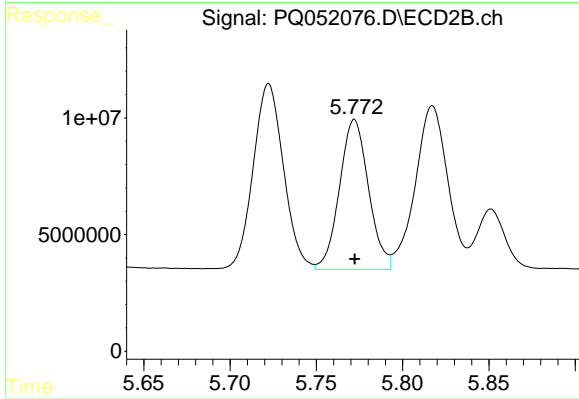
#5 AR-1016-3

R.T.: 5.722 min
 Delta R.T.: 0.000 min
 Response: 97698568
 Conc: 449.46 ng/ml



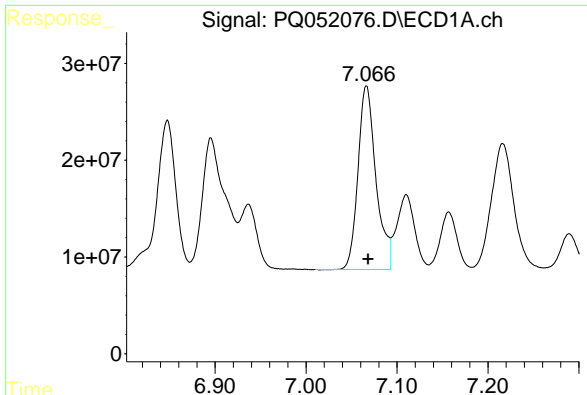
#6 AR-1016-4

R.T.: 6.754 min
 Delta R.T.: 0.000 min
 Response: 275599622
 Conc: 458.58 ng/ml



#6 AR-1016-4

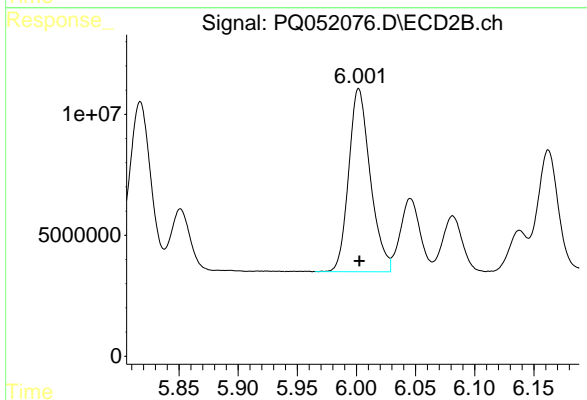
R.T.: 5.772 min
 Delta R.T.: 0.000 min
 Response: 75279208
 Conc: 437.26 ng/ml



#7 AR-1016-5

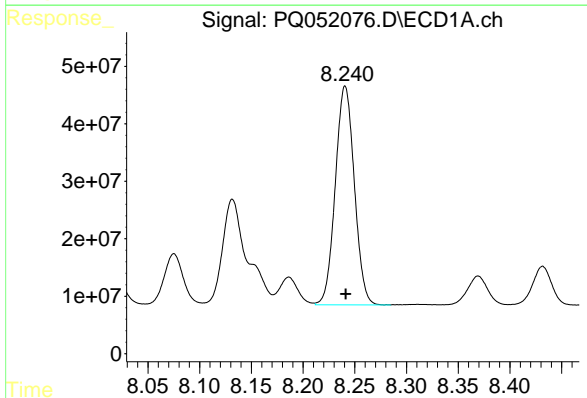
R.T.: 7.066 min
Delta R.T.: -0.002 min
Response: 260584539
Conc: 450.85 ng/ml

Instrument :
ECD_Q
ClientSampleId :
PB134487BS



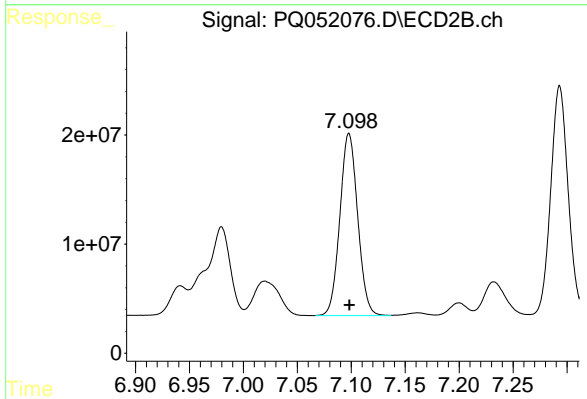
#7 AR-1016-5

R.T.: 6.002 min
Delta R.T.: 0.000 min
Response: 96228635
Conc: 446.33 ng/ml



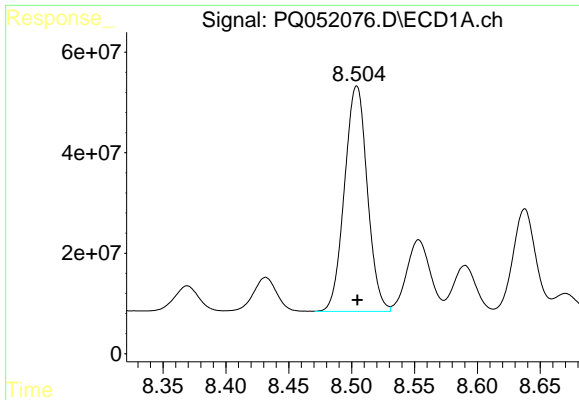
#31 AR-1260-1

R.T.: 8.241 min
Delta R.T.: 0.000 min
Response: 487862409
Conc: 496.94 ng/ml



#31 AR-1260-1

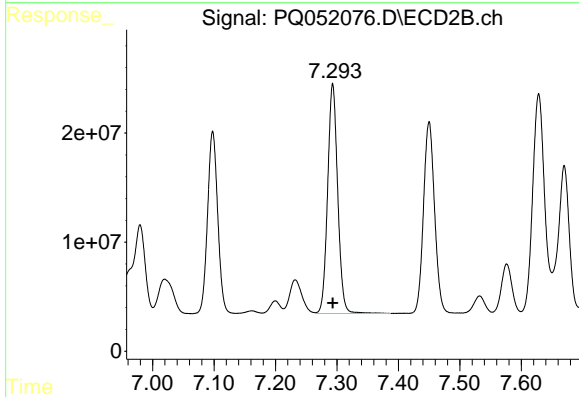
R.T.: 7.098 min
Delta R.T.: 0.000 min
Response: 192271476
Conc: 483.56 ng/ml



#32 AR-1260-2

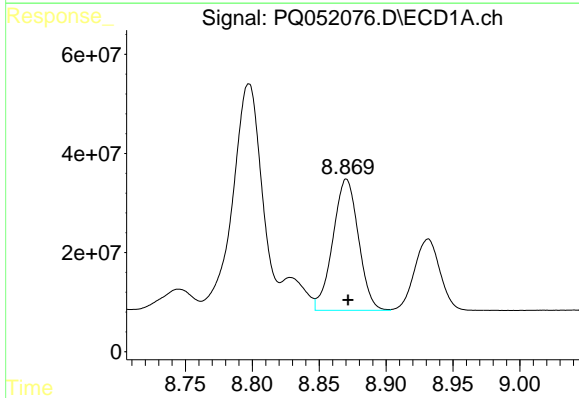
R.T.: 8.504 min
 Delta R.T.: 0.000 min
 Response: 567117310
 Conc: 487.23 ng/ml

Instrument :
 ECD_Q
 ClientSampled :
 PB134487BS



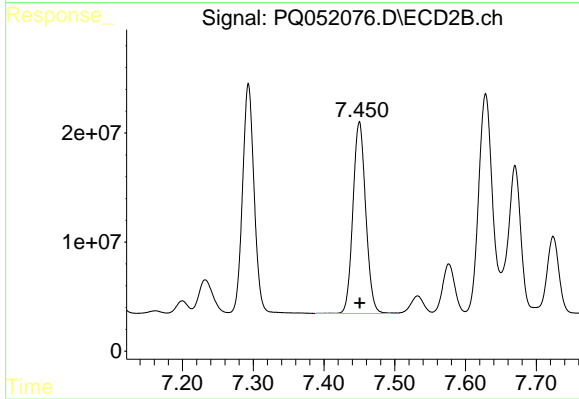
#32 AR-1260-2

R.T.: 7.293 min
 Delta R.T.: 0.000 min
 Response: 240593012
 Conc: 487.00 ng/ml



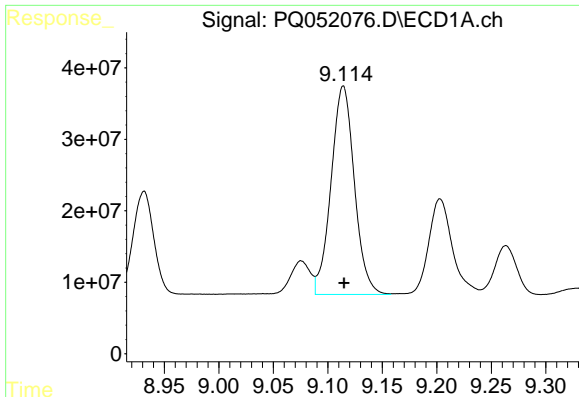
#33 AR-1260-3

R.T.: 8.870 min
 Delta R.T.: -0.001 min
 Response: 352986299
 Conc: 416.66 ng/ml



#33 AR-1260-3

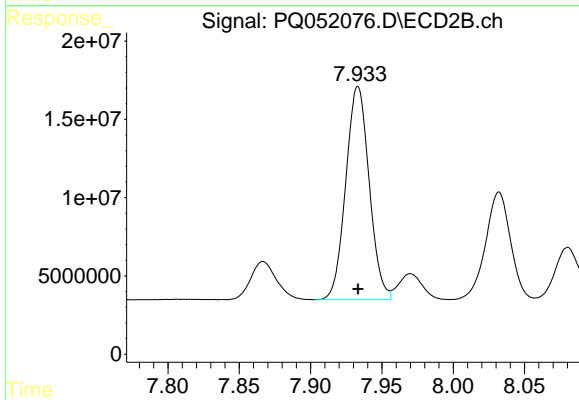
R.T.: 7.450 min
 Delta R.T.: 0.000 min
 Response: 220878071
 Conc: 481.47 ng/ml



#34 AR-1260-4

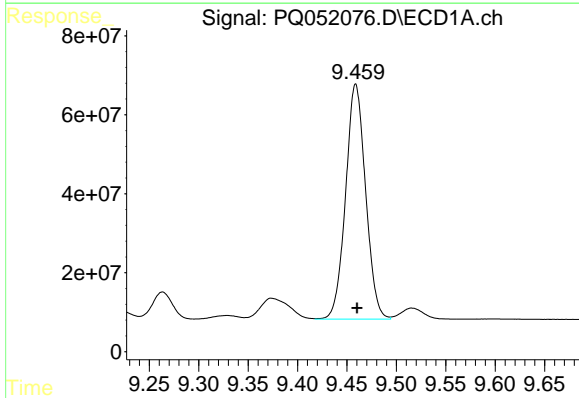
R.T.: 9.114 min
 Delta R.T.: 0.000 min
 Response: 434533283
 Conc: 443.23 ng/ml

Instrument :
 ECD_Q
 ClientSampled :
 PB134487BS



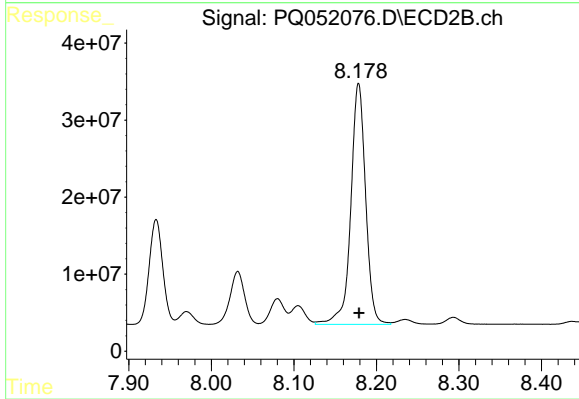
#34 AR-1260-4

R.T.: 7.933 min
 Delta R.T.: 0.000 min
 Response: 155770576
 Conc: 407.24 ng/ml



#35 AR-1260-5

R.T.: 9.459 min
 Delta R.T.: -0.002 min
 Response: 838802745
 Conc: 426.67 ng/ml



#35 AR-1260-5

R.T.: 8.178 min
 Delta R.T.: 0.000 min
 Response: 390457956
 Conc: 419.49 ng/ml