

Data Path : Z:\pestpcbsrv\HPCHEM1\ECD_Q\Data\PQ020821\
 Data File : PQ052078.D
 Signal(s) : Signal #1: ECD1A.ch Signal #2: ECD2B.ch
 Acq On : 08 Feb 2021 18:23
 Operator : DD\AJ
 Sample : M1317-05
 Misc :
 ALS Vial : 12 Sample Multiplier: 1

Instrument :
 ECD_Q
ClientSampled :
 R-C

Manual Integrations
APPROVED
 Ankita
 2/9/2021 10:48:24 AM

Integration File signal 1: autoint1.e
 Integration File signal 2: autoint2.e
 Quant Time: Feb 09 06:34:01 2021
 Quant Method : Z:\pestpcbsrv\HPCHEM1\ECD_Q\Method\PQ020821.M
 Quant Title : GC EXTRACTABLES
 QLast Update : Tue Feb 09 06:20:03 2021
 Response via : Initial Calibration
 Integrator: ChemStation

Volume Inj. : 2 µl
 Signal #1 Phase : ZB-MR1 Signal #2 Phase: ZB-MR2
 Signal #1 Info : 30Mx0.32mmx 0.50µ Signal #2 Info : 30M x 0.32mm x 0.25µm

Compound	RT#1	RT#2	Resp#1	Resp#2	ng/ml	ng/ml

System Monitoring Compounds						
1) SA Tetrachlo...	5.238	4.261	326.3E6	117.3E6	13.107	13.605
2) SA Decachlor...	11.423	9.597	306.2E6	107.1E6	17.747	15.704
Target Compounds						
31) L7 AR-1260-1	8.247	7.109	35087359	17249757	35.740m	43.383
32) L7 AR-1260-2	8.508	7.302	91419927	22315211	78.542m	45.169 #
33) L7 AR-1260-3	8.875	7.457	28636361	14827687	33.802m	32.321
34) L7 AR-1260-4	9.116	7.939	41824543	10975409	42.662m	28.693 #
35) L7 AR-1260-5	9.463	8.183	75694088	28935908	38.503	31.087

(f)=RT Delta > 1/2 Window (#)=Amounts differ by > 25% (m)=manual int.

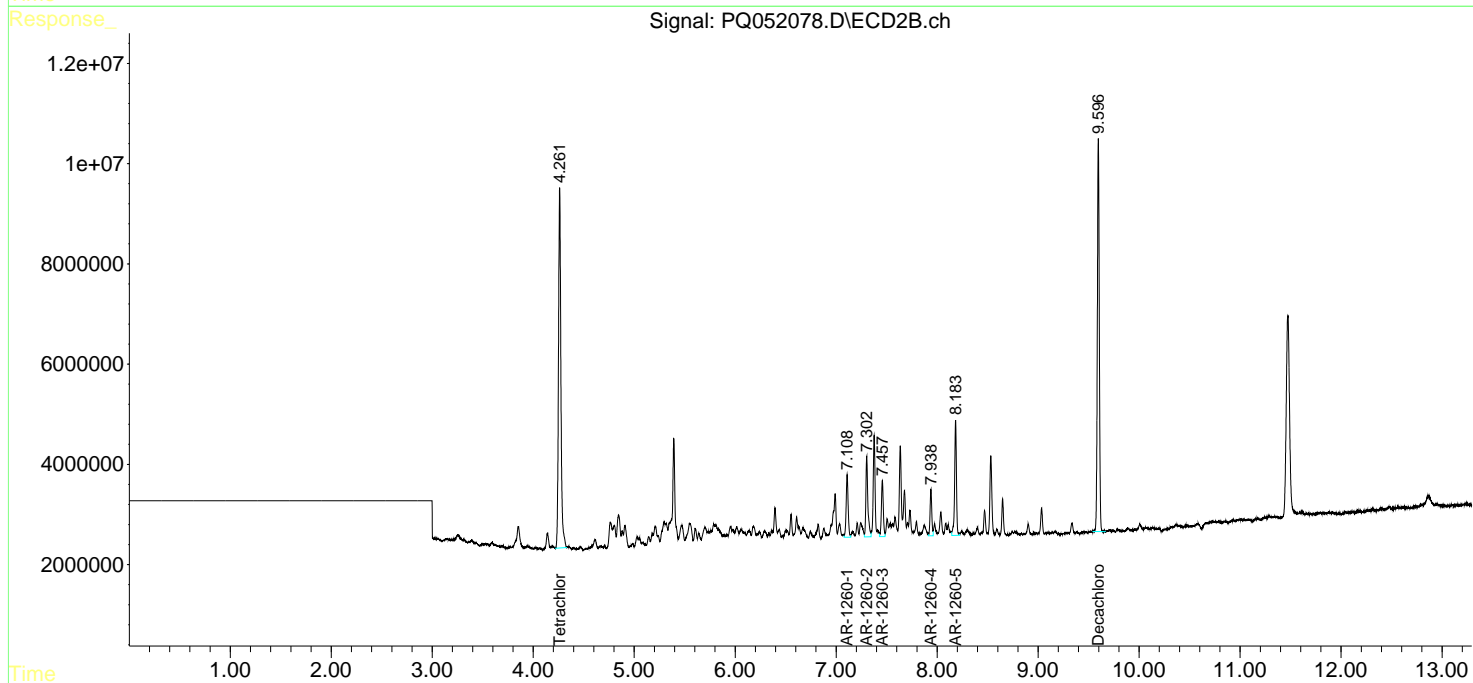
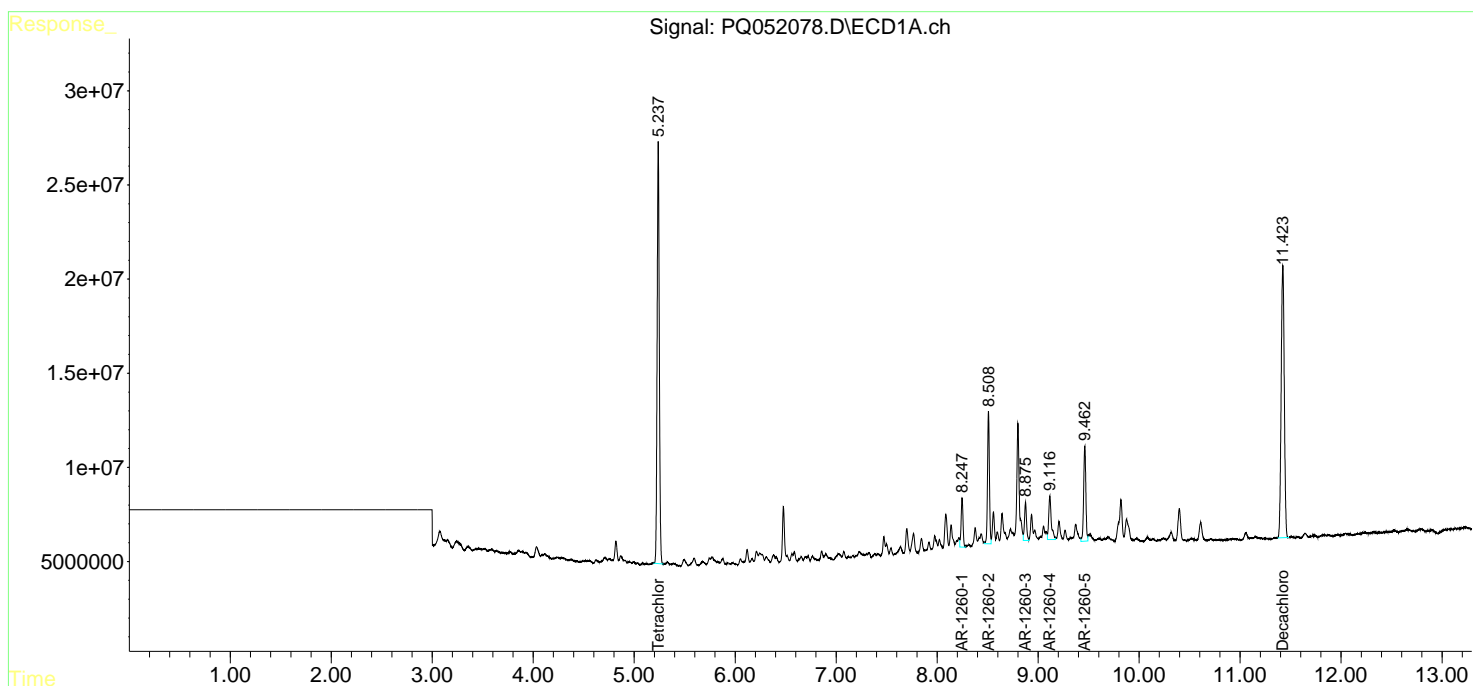
Data Path : Z:\pestpcbsrv\HPCHEM1\ECD_Q\Data\PQ020821\
 Data File : PQ052078.D
 Signal(s) : Signal #1: ECD1A.ch Signal #2: ECD2B.ch
 Acq On : 08 Feb 2021 18:23
 Operator : DD\AJ
 Sample : M1317-05
 Misc :
 ALS Vial : 12 Sample Multiplier: 1

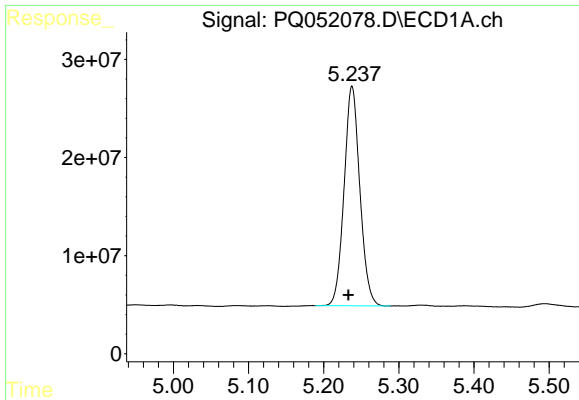
Instrument :
 ECD_Q
 ClientSampled :
 R-C

Manual Integrations
APPROVED
 Ankita
 2/9/2021 10:48:24 AM

Integration File signal 1: autoint1.e
 Integration File signal 2: autoint2.e
 Quant Time: Feb 09 06:34:01 2021
 Quant Method : Z:\pestpcbsrv\HPCHEM1\ECD_Q\Method\PQ020821.M
 Quant Title : GC EXTRACTABLES
 QLast Update : Tue Feb 09 06:20:03 2021
 Response via : Initial Calibration
 Integrator: ChemStation

Volume Inj. : 2 µl
 Signal #1 Phase : ZB-MR1 Signal #2 Phase: ZB-MR2
 Signal #1 Info : 30Mx0.32mmx 0.50µ Signal #2 Info : 30M x 0.32mm x 0.25µm

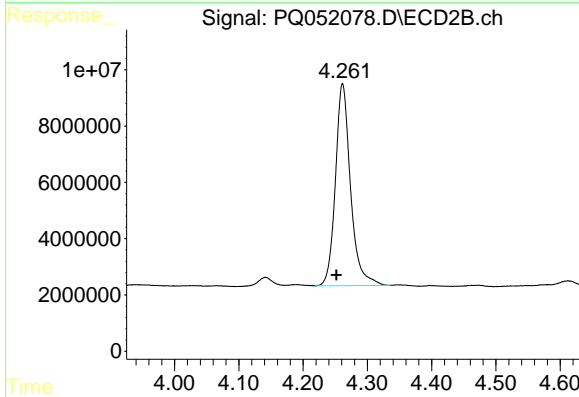




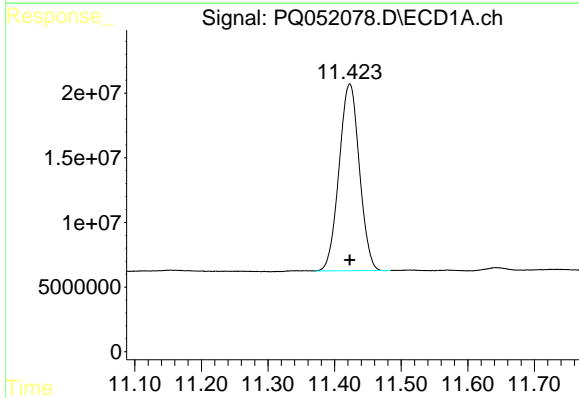
#1 Tetrachloro-m-xylene
 R.T.: 5.238 min
 Delta R.T.: 0.005 min
 Response: 326339807
 Conc: 13.11 ng/ml

Instrument :
 ECD_Q
 ClientSampled :
 R-C

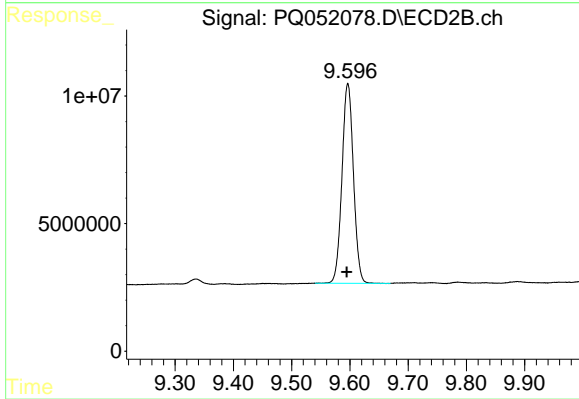
Manual Integrations
 APPROVED
 Ankita
 2/9/2021 10:48:24 AM



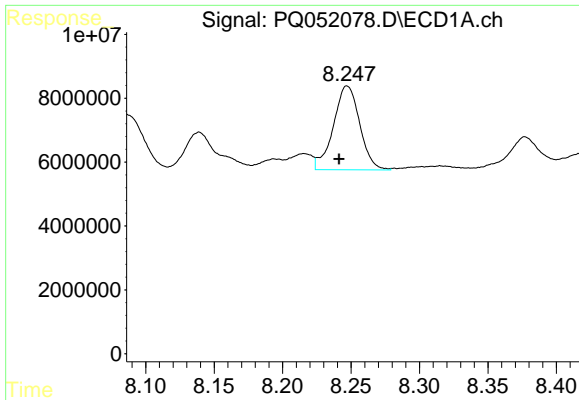
#1 Tetrachloro-m-xylene
 R.T.: 4.261 min
 Delta R.T.: 0.010 min
 Response: 117309849
 Conc: 13.60 ng/ml



#2 Decachlorobiphenyl
 R.T.: 11.423 min
 Delta R.T.: 0.000 min
 Response: 306191693
 Conc: 17.75 ng/ml



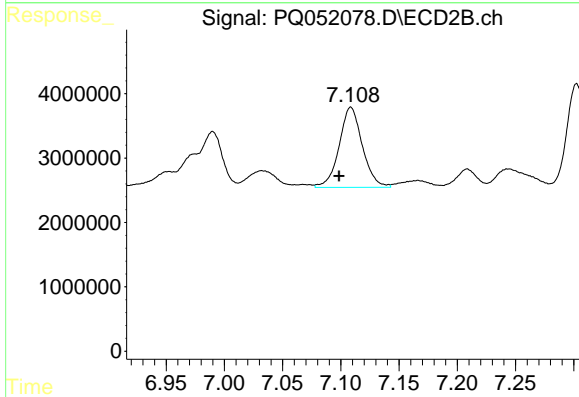
#2 Decachlorobiphenyl
 R.T.: 9.597 min
 Delta R.T.: 0.002 min
 Response: 107114433
 Conc: 15.70 ng/ml



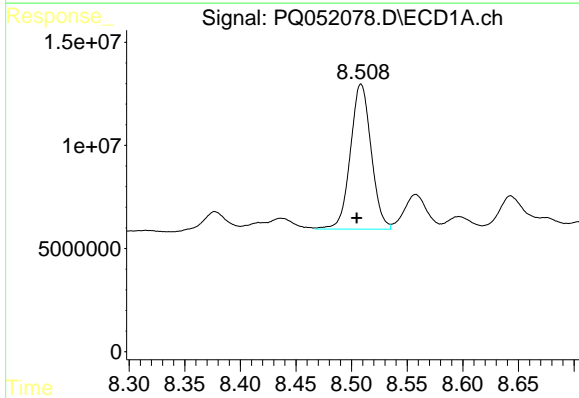
#31 AR-1260-1
 R.T.: 8.247 min
 Delta R.T.: 0.005 min
 Response: 35087359
 Conc: 35.74 ng/ml m

Instrument :
 ECD_Q
ClientSampled :
 R-C

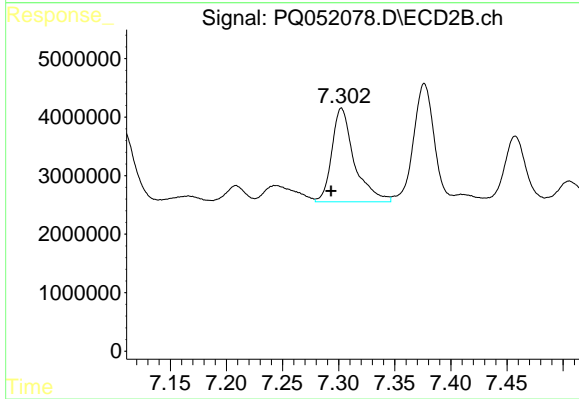
Manual Integrations
APPROVED
 Ankita
 2/9/2021 10:48:24 AM



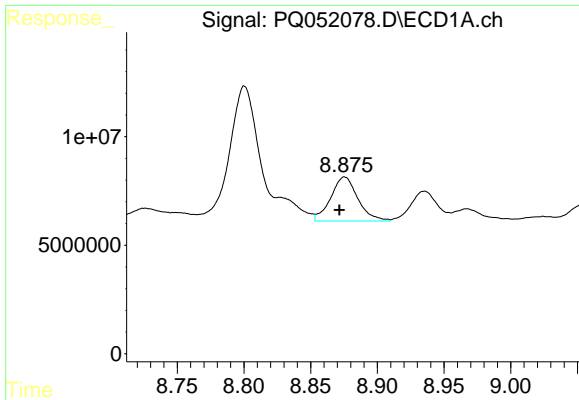
#31 AR-1260-1
 R.T.: 7.109 min
 Delta R.T.: 0.010 min
 Response: 17249757
 Conc: 43.38 ng/ml



#32 AR-1260-2
 R.T.: 8.508 min
 Delta R.T.: 0.003 min
 Response: 91419927
 Conc: 78.54 ng/ml m



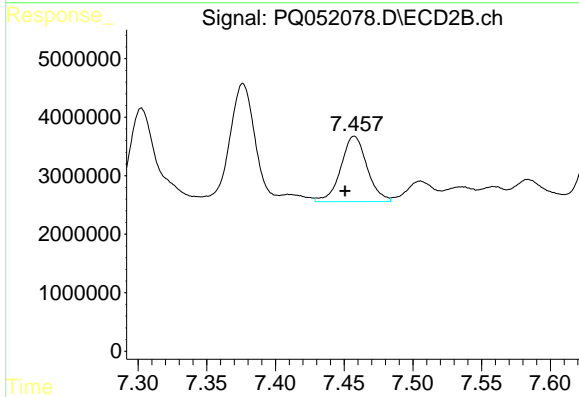
#32 AR-1260-2
 R.T.: 7.302 min
 Delta R.T.: 0.009 min
 Response: 22315211
 Conc: 45.17 ng/ml



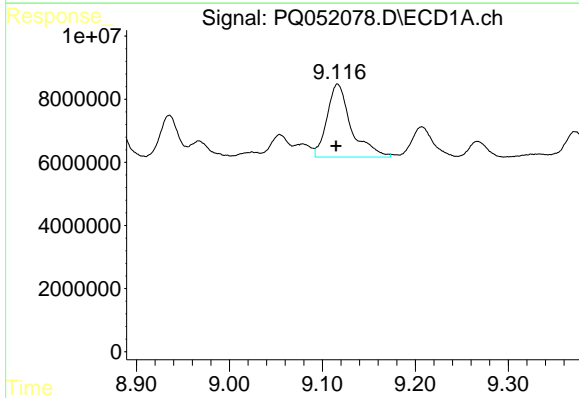
#33 AR-1260-3
 R.T.: 8.875 min
 Delta R.T.: 0.003 min
 Response: 28636361
 Conc: 33.80 ng/ml m

Instrument :
 ECD_Q
ClientSampled :
 R-C

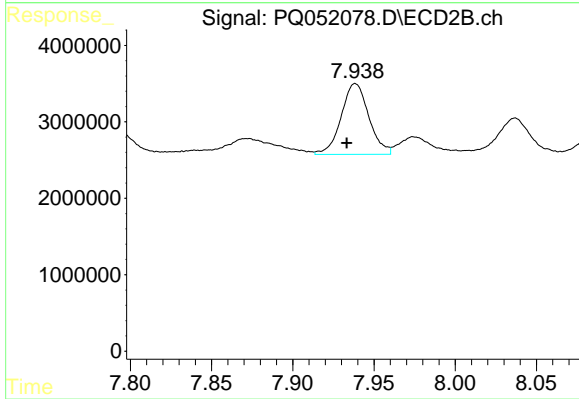
Manual Integrations
APPROVED
 Ankita
 2/9/2021 10:48:24 AM



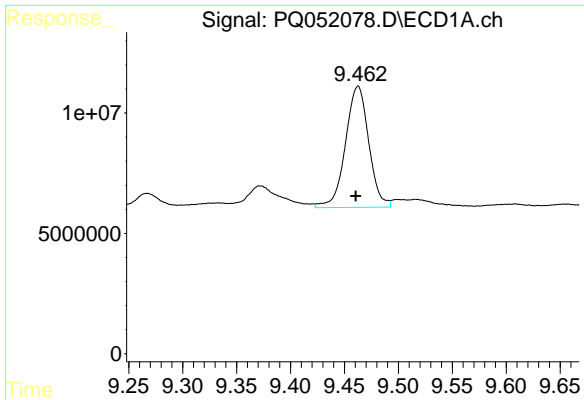
#33 AR-1260-3
 R.T.: 7.457 min
 Delta R.T.: 0.007 min
 Response: 14827687
 Conc: 32.32 ng/ml



#34 AR-1260-4
 R.T.: 9.116 min
 Delta R.T.: 0.000 min
 Response: 41824543
 Conc: 42.66 ng/ml m



#34 AR-1260-4
 R.T.: 7.939 min
 Delta R.T.: 0.005 min
 Response: 10975409
 Conc: 28.69 ng/ml



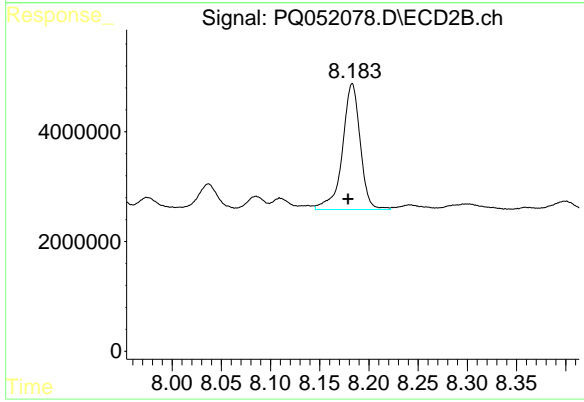
#35 AR-1260-5

R.T.: 9.463 min
 Delta R.T.: 0.002 min
 Response: 75694088
 Conc: 38.50 ng/ml

Instrument :
 ECD_Q
 ClientSampled :
 R-C

Manual Integrations
 APPROVED

Ankita
 2/9/2021 10:48:24 AM



#35 AR-1260-5

R.T.: 8.183 min
 Delta R.T.: 0.004 min
 Response: 28935908
 Conc: 31.09 ng/ml