

Data Path : Z:\pestpcbsrv\HPCHEM1\ECD_Q\Data\PQ020821\
 Data File : PQ052093.D
 Signal(s) : Signal #1: ECD1A.ch Signal #2: ECD2B.ch
 Acq On : 08 Feb 2021 23:01
 Operator : DD\AJ
 Sample : PB134499BS
 Misc :
 ALS Vial : 27 Sample Multiplier: 1

Instrument :
 ECD_Q
ClientSampleId :
 PB134499BS

Manual Integrations
APPROVED
 Ankita
 2/9/2021 10:49:04 AM

Integration File signal 1: autoint1.e
 Integration File signal 2: autoint2.e
 Quant Time: Feb 09 06:43:52 2021
 Quant Method : Z:\pestpcbsrv\HPCHEM1\ECD_Q\Method\PQ020821.M
 Quant Title : GC EXTRACTABLES
 QLast Update : Tue Feb 09 06:20:03 2021
 Response via : Initial Calibration
 Integrator: ChemStation

Volume Inj. : 2 µl
 Signal #1 Phase : ZB-MR1 Signal #2 Phase: ZB-MR2
 Signal #1 Info : 30Mx0.32mmx 0.50µ Signal #2 Info : 30M x 0.32mm x 0.25µm

| Compound | RT#1 | RT#2 | Resp#1 | Resp#2 | ng/ml | ng/ml |
|-----------------------------|--------|-------|---------|----------|---------|----------|
| ----- | | | | | | |
| System Monitoring Compounds | | | | | | |
| 1) SA Tetrachlo... | 5.233 | 4.252 | 530.9E6 | 181.5E6 | 21.325 | 21.044 |
| 2) SA Decachlor... | 11.422 | 9.594 | 356.4E6 | 132.6E6 | 20.655 | 19.448 |
| Target Compounds | | | | | | |
| 3) L1 AR-1016-1 | 6.555 | 5.509 | 367.3E6 | 143.1E6 | 455.076 | 486.978 |
| 4) L1 AR-1016-2 | 6.579 | 5.530 | 548.8E6 | 200.0E6 | 458.049 | 478.008 |
| 5) L1 AR-1016-3 | 6.645 | 5.723 | 324.2E6 | 103.7E6 | 449.827 | 476.876 |
| 6) L1 AR-1016-4 | 6.754 | 5.772 | 267.2E6 | 78919054 | 444.660 | 458.403 |
| 7) L1 AR-1016-5 | 7.067 | 6.002 | 249.5E6 | 99953079 | 431.679 | 463.601 |
| 31) L7 AR-1260-1 | 8.241 | 7.098 | 443.8E6 | 185.4E6 | 452.032 | 466.385 |
| 32) L7 AR-1260-2 | 8.505 | 7.294 | 507.4E6 | 231.0E6 | 435.944 | 467.602 |
| 33) L7 AR-1260-3 | 8.870 | 7.449 | 315.5E6 | 212.1E6 | 372.432 | 462.385m |
| 34) L7 AR-1260-4 | 9.113 | 7.933 | 396.6E6 | 145.0E6 | 404.518 | 379.171 |
| 35) L7 AR-1260-5 | 9.460 | 8.179 | 792.3E6 | 365.8E6 | 403.012 | 393.014 |
| ----- | | | | | | |

(f)=RT Delta > 1/2 Window (#)=Amounts differ by > 25% (m)=manual int.

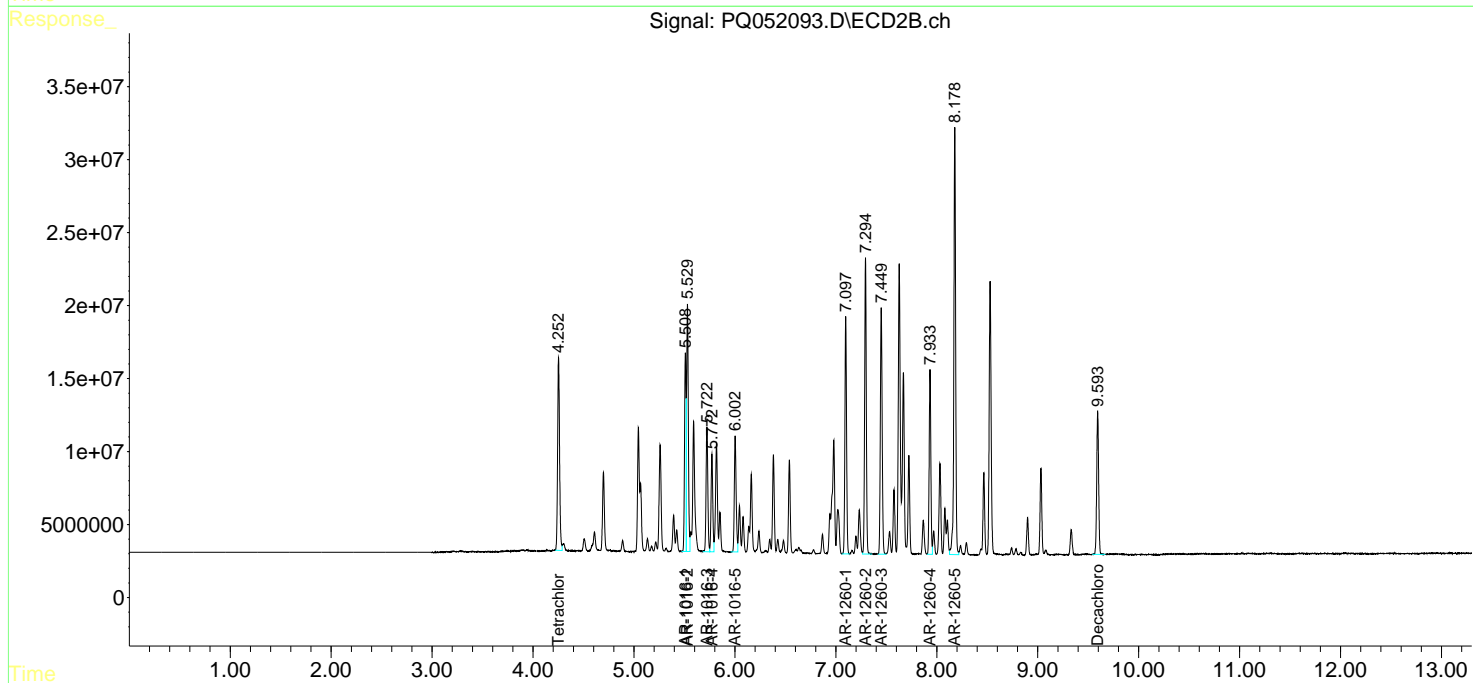
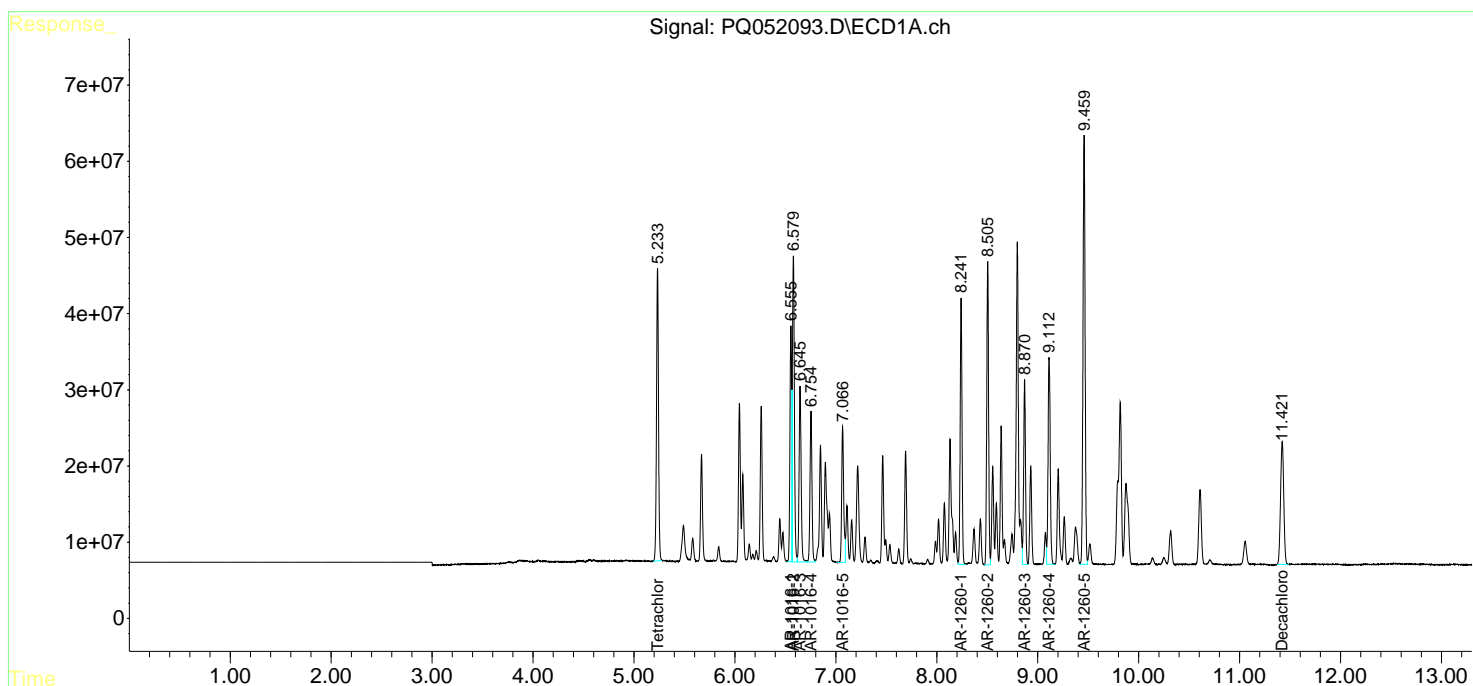
Data Path : Z:\pestpcbsrv\HPCHEM1\ECD_Q\Data\PQ020821\
 Data File : PQ052093.D
 Signal(s) : Signal #1: ECD1A.ch Signal #2: ECD2B.ch
 Acq On : 08 Feb 2021 23:01
 Operator : DD\AJ
 Sample : PB134499BS
 Misc :
 ALS Vial : 27 Sample Multiplier: 1

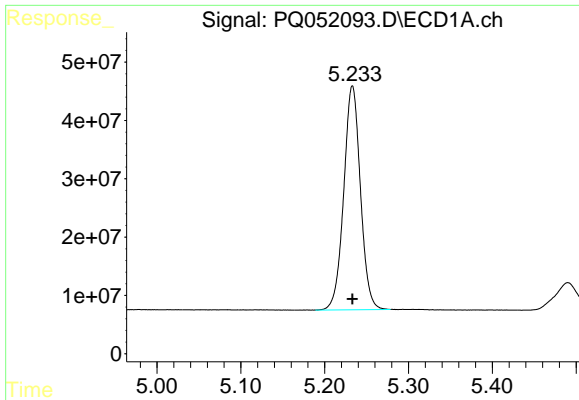
Instrument :
 ECD_Q
Client Sampled :
 PB134499BS

Manual Integrations
APPROVED
 Ankita
 2/9/2021 10:49:04 AM

Integration File signal 1: autoint1.e
 Integration File signal 2: autoint2.e
 Quant Time: Feb 09 06:43:52 2021
 Quant Method : Z:\pestpcbsrv\HPCHEM1\ECD_Q\Method\PQ020821.M
 Quant Title : GC EXTRACTABLES
 QLast Update : Tue Feb 09 06:20:03 2021
 Response via : Initial Calibration
 Integrator: ChemStation

Volume Inj. : 2 µl
 Signal #1 Phase : ZB-MR1 Signal #2 Phase: ZB-MR2
 Signal #1 Info : 30Mx0.32mmx 0.50µ Signal #2 Info : 30M x 0.32mm x 0.25µm

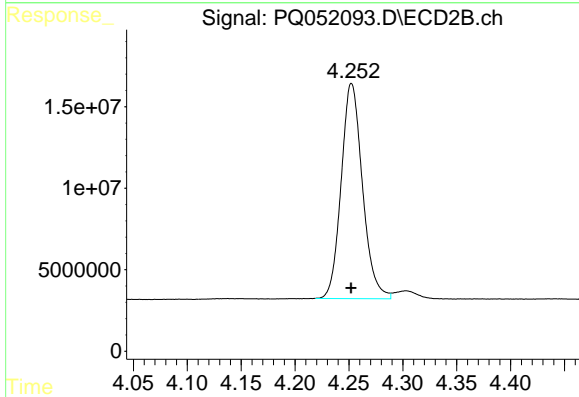




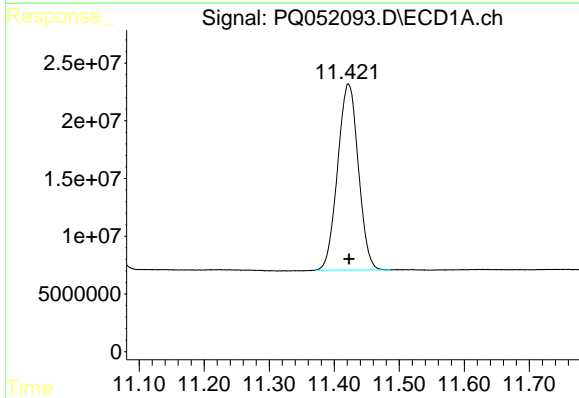
#1 Tetrachloro-m-xylene
 R.T.: 5.233 min
 Delta R.T.: 0.000 min
 Response: 530946561
 Conc: 21.33 ng/ml

Instrument :
 ECD_Q
ClientSampled :
 PB134499BS

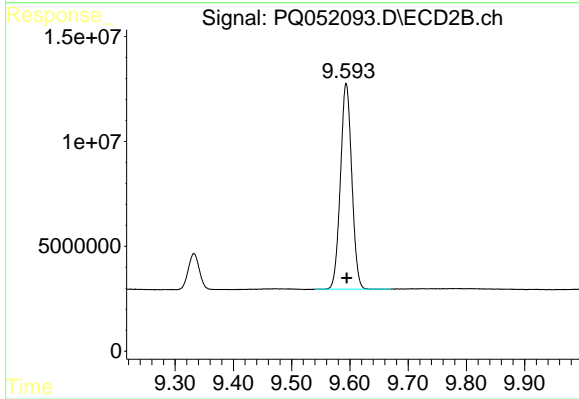
Manual Integrations
APPROVED
 Ankita
 2/9/2021 10:49:04 AM



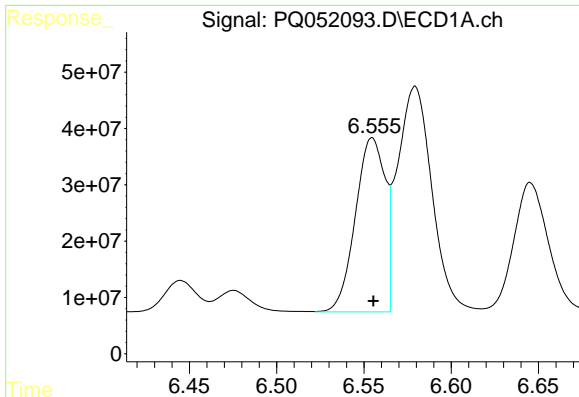
#1 Tetrachloro-m-xylene
 R.T.: 4.252 min
 Delta R.T.: 0.000 min
 Response: 181453539
 Conc: 21.04 ng/ml



#2 Decachlorobiphenyl
 R.T.: 11.422 min
 Delta R.T.: -0.001 min
 Response: 356365761
 Conc: 20.65 ng/ml



#2 Decachlorobiphenyl
 R.T.: 9.594 min
 Delta R.T.: 0.000 min
 Response: 132649491
 Conc: 19.45 ng/ml



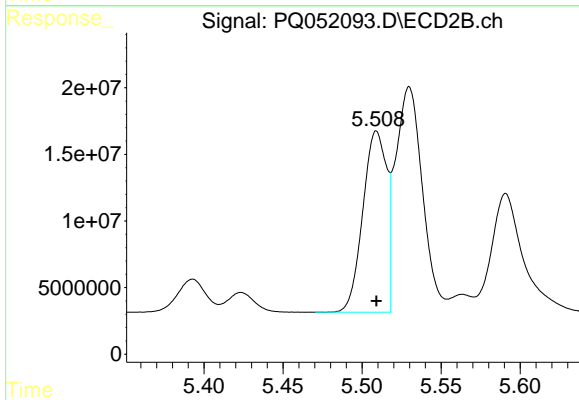
#3 AR-1016-1

R.T.: 6.555 min
 Delta R.T.: 0.000 min
 Response: 367304338
 Conc: 455.08 ng/ml

Instrument :
 ECD_Q
 ClientSampled :
 PB134499BS

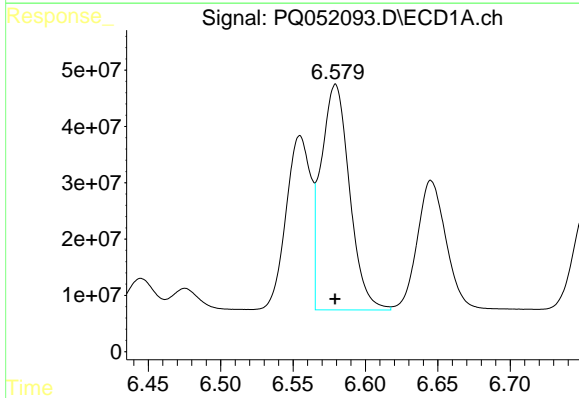
Manual Integrations
 APPROVED

Ankita
 2/9/2021 10:49:04 AM



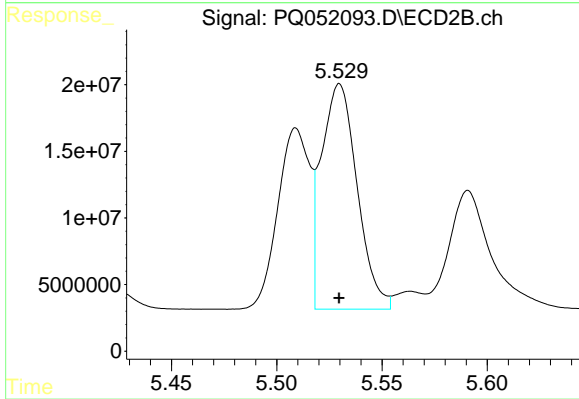
#3 AR-1016-1

R.T.: 5.509 min
 Delta R.T.: 0.000 min
 Response: 143085413
 Conc: 486.98 ng/ml



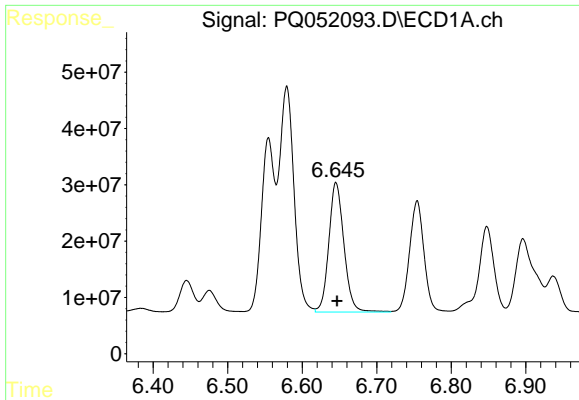
#4 AR-1016-2

R.T.: 6.579 min
 Delta R.T.: 0.000 min
 Response: 548843946
 Conc: 458.05 ng/ml



#4 AR-1016-2

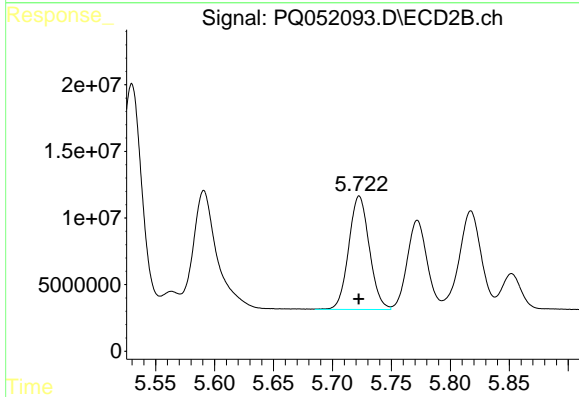
R.T.: 5.530 min
 Delta R.T.: 0.000 min
 Response: 200043878
 Conc: 478.01 ng/ml



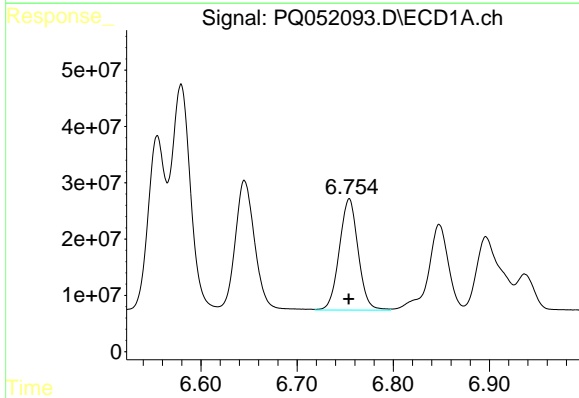
#5 AR-1016-3
 R.T.: 6.645 min
 Delta R.T.: -0.001 min
 Response: 324232749
 Conc: 449.83 ng/ml

Instrument :
 ECD_Q
ClientSampled :
 PB134499BS

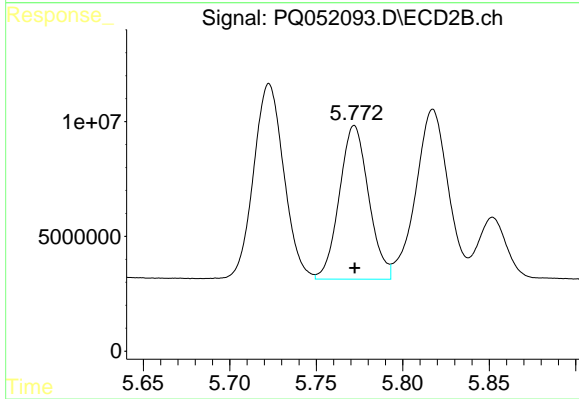
Manual Integrations
APPROVED
 Ankita
 2/9/2021 10:49:04 AM



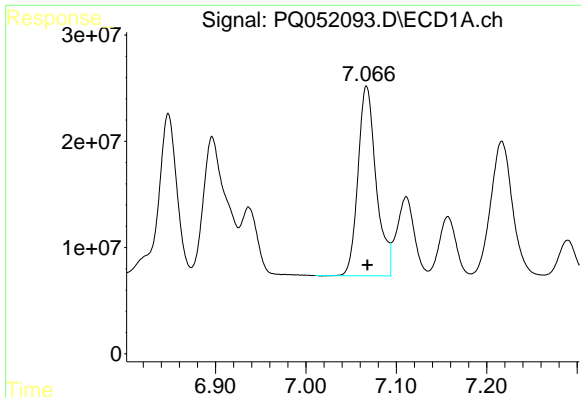
#5 AR-1016-3
 R.T.: 5.723 min
 Delta R.T.: 0.000 min
 Response: 103657335
 Conc: 476.88 ng/ml



#6 AR-1016-4
 R.T.: 6.754 min
 Delta R.T.: 0.000 min
 Response: 267233817
 Conc: 444.66 ng/ml



#6 AR-1016-4
 R.T.: 5.772 min
 Delta R.T.: 0.000 min
 Response: 78919054
 Conc: 458.40 ng/ml



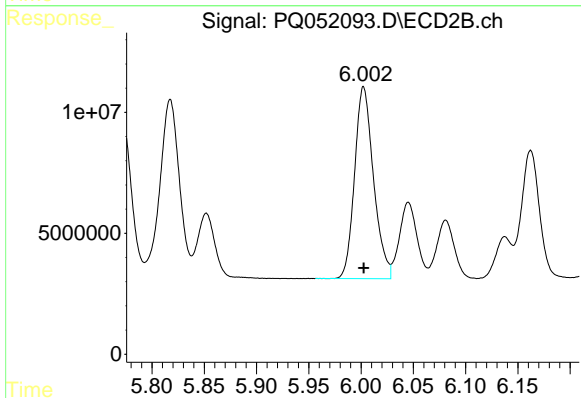
#7 AR-1016-5

R.T.: 7.067 min
 Delta R.T.: 0.000 min
 Response: 249502996
 Conc: 431.68 ng/ml

Instrument :
 ECD_Q
 ClientSampled :
 PB134499BS

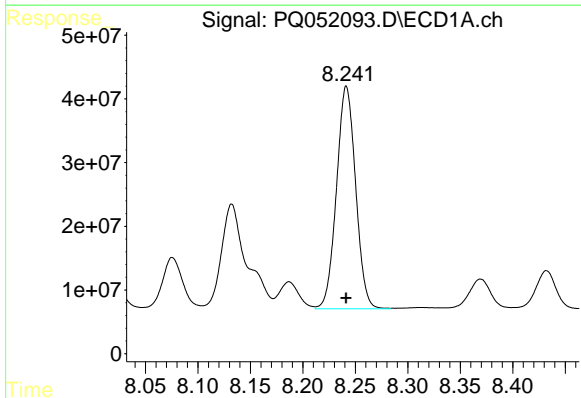
Manual Integrations
 APPROVED

Ankita
 2/9/2021 10:49:04 AM



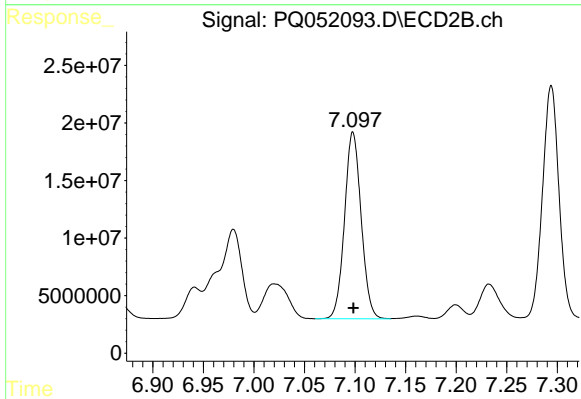
#7 AR-1016-5

R.T.: 6.002 min
 Delta R.T.: 0.000 min
 Response: 99953079
 Conc: 463.60 ng/ml



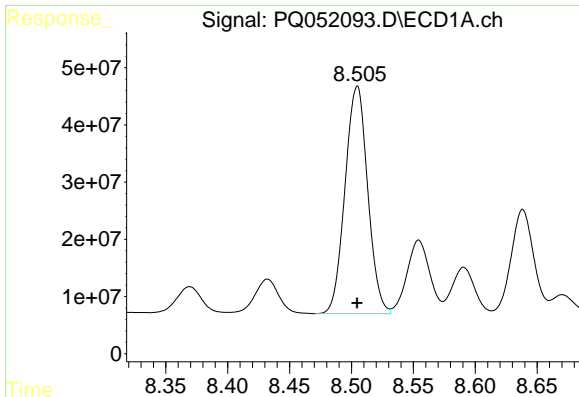
#31 AR-1260-1

R.T.: 8.241 min
 Delta R.T.: 0.000 min
 Response: 443772885
 Conc: 452.03 ng/ml



#31 AR-1260-1

R.T.: 7.098 min
 Delta R.T.: 0.000 min
 Response: 185442082
 Conc: 466.38 ng/ml



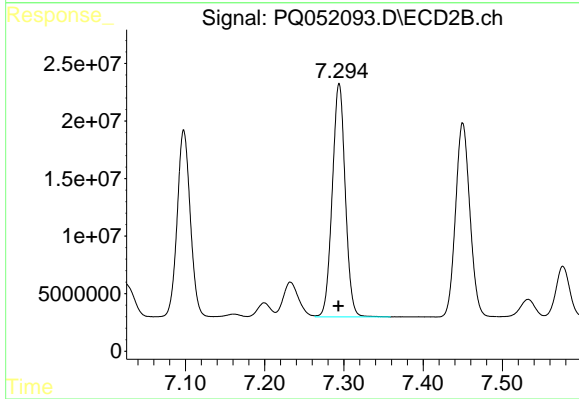
#32 AR-1260-2

R.T.: 8.505 min
Delta R.T.: 0.000 min
Response: 507423282
Conc: 435.94 ng/ml

Instrument :
ECD_Q
ClientSampled :
PB134499BS

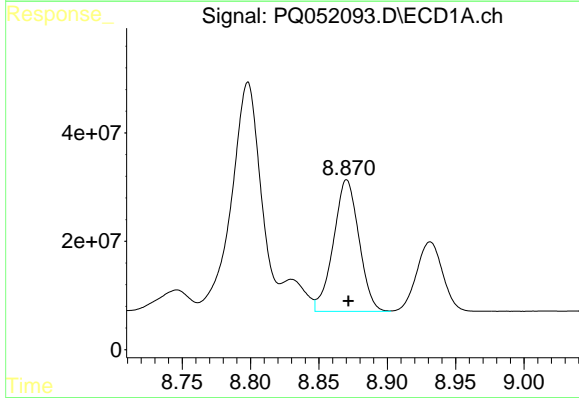
Manual Integrations
APPROVED

Ankita
2/9/2021 10:49:04 AM



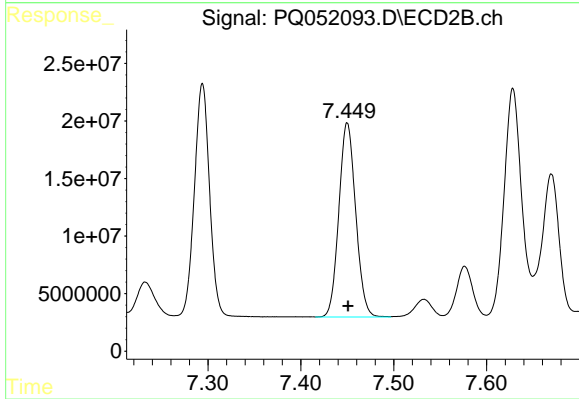
#32 AR-1260-2

R.T.: 7.294 min
Delta R.T.: 0.000 min
Response: 231010638
Conc: 467.60 ng/ml



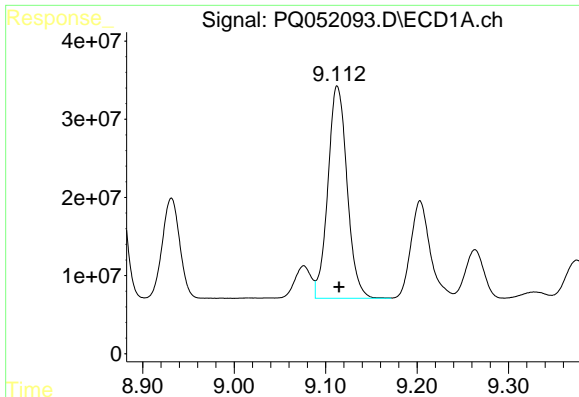
#33 AR-1260-3

R.T.: 8.870 min
Delta R.T.: -0.001 min
Response: 315517488
Conc: 372.43 ng/ml



#33 AR-1260-3

R.T.: 7.449 min
Delta R.T.: -0.002 min
Response: 212123610
Conc: 462.38 ng/ml m



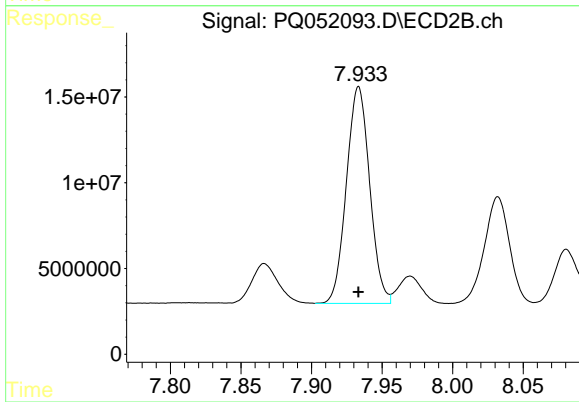
#34 AR-1260-4

R.T.: 9.113 min
 Delta R.T.: -0.002 min
 Response: 396580295
 Conc: 404.52 ng/ml

Instrument :
 ECD_Q
 ClientSampled :
 PB134499BS

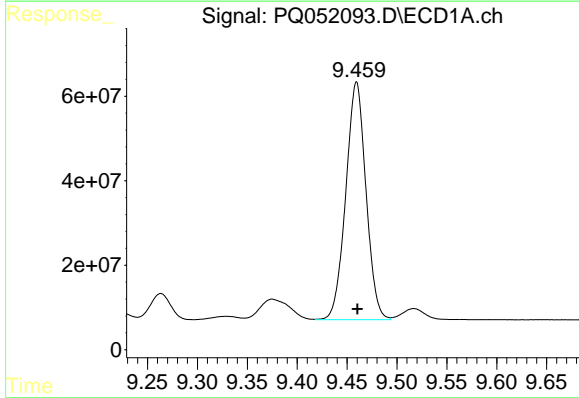
Manual Integrations
 APPROVED

Ankita
 2/9/2021 10:49:04 AM



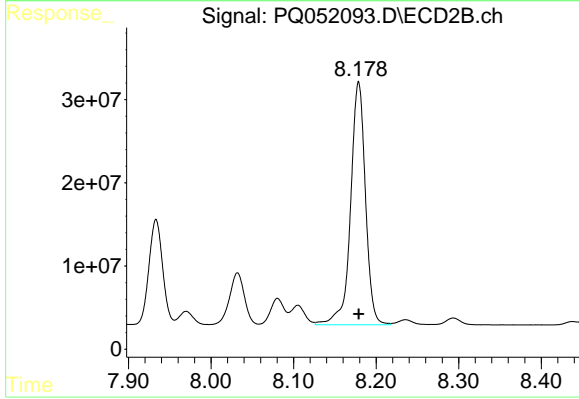
#34 AR-1260-4

R.T.: 7.933 min
 Delta R.T.: 0.000 min
 Response: 145035141
 Conc: 379.17 ng/ml



#35 AR-1260-5

R.T.: 9.460 min
 Delta R.T.: 0.000 min
 Response: 792291755
 Conc: 403.01 ng/ml



#35 AR-1260-5

R.T.: 8.179 min
 Delta R.T.: 0.000 min
 Response: 365816905
 Conc: 393.01 ng/ml