

Data Path : Z:\pestpcbsrv\HPCHEM1\ECD_Q\Data\PQ020824\
 Data File : PQ065330.D
 Signal(s) : Signal #1: ECD1A.ch Signal #2: ECD2B.ch
 Acq On : 08 Feb 2024 19:35
 Operator : YP\AJ
 Sample : P1391-01MS
 Misc :
 ALS Vial : 23 Sample Multiplier: 1

Instrument :
 ECD_Q
 ClientSampleId :
 SP-1MS

Integration File signal 1: autoint1.e
 Integration File signal 2: autoint2.e
 Quant Time: Feb 08 21:27:02 2024
 Quant Method : Z:\pestpcbsrv\HPCHEM1\ECD_Q\Method\PQ011724.M
 Quant Title : GC EXTRACTABLES
 QLast Update : Thu Jan 18 00:09:27 2024
 Response via : Initial Calibration
 Integrator: ChemStation

Volume Inj. : 2 µl
 Signal #1 Phase : ZB-MR1 Signal #2 Phase: ZB-MR2
 Signal #1 Info : 30Mx0.32mmx 0.50µ Signal #2 Info : 30M x 0.32mm x 0.25µm

	Compound	RT#1	RT#2	Resp#1	Resp#2	ng/ml	ng/ml

System Monitoring Compounds							
1)	SA Tetrachlo...	3.465	2.742	77698317	152.3E6	20.857	22.802
2)	SA Decachlor...	8.769	7.514	51942915	124.9E6	16.808	17.181
Target Compounds							
3)	L1 AR-1016-1	4.587	3.741	56160590	135.3E6	465.454	541.880
4)	L1 AR-1016-2	4.606	3.756	86472848	191.3E6	502.508	555.840
5)	L1 AR-1016-3	4.665	3.916	54445825	101.4E6	495.504	529.582
6)	L1 AR-1016-4	4.758	3.965	45348003	85918113	494.662	534.105
7)	L1 AR-1016-5	5.050	4.160	43082456	103.8E6	489.710	522.716
31)	L7 AR-1260-1	6.174	5.154	76779909	204.2E6	436.007	507.299
32)	L7 AR-1260-2	6.441	5.344	96128142	241.8E6	420.806	494.513
33)	L7 AR-1260-3	6.803	5.485	59955518	223.8E6	373.419	467.869 #
34)	L7 AR-1260-4	7.023	5.948	72774236	167.0E6	409.211	429.223
35)	L7 AR-1260-5	7.343	6.194	138.2E6	370.2E6	376.479	424.193

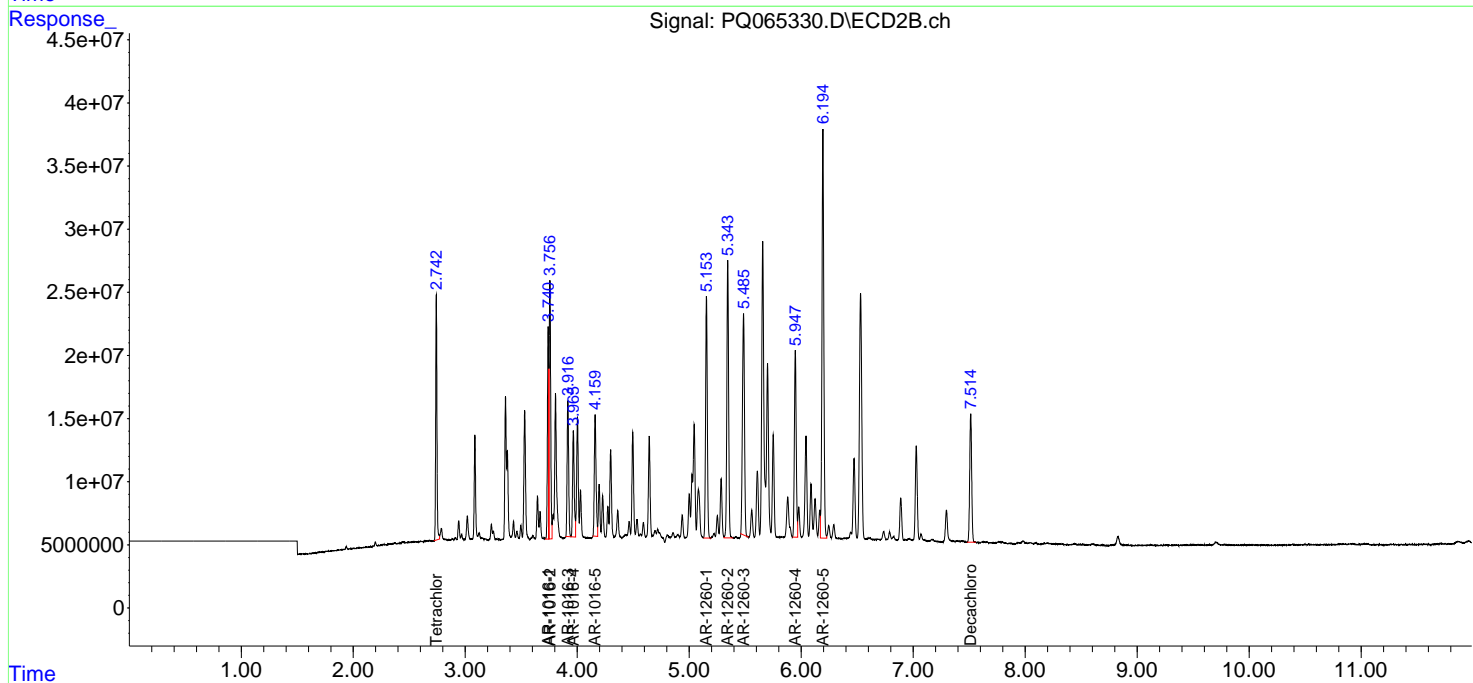
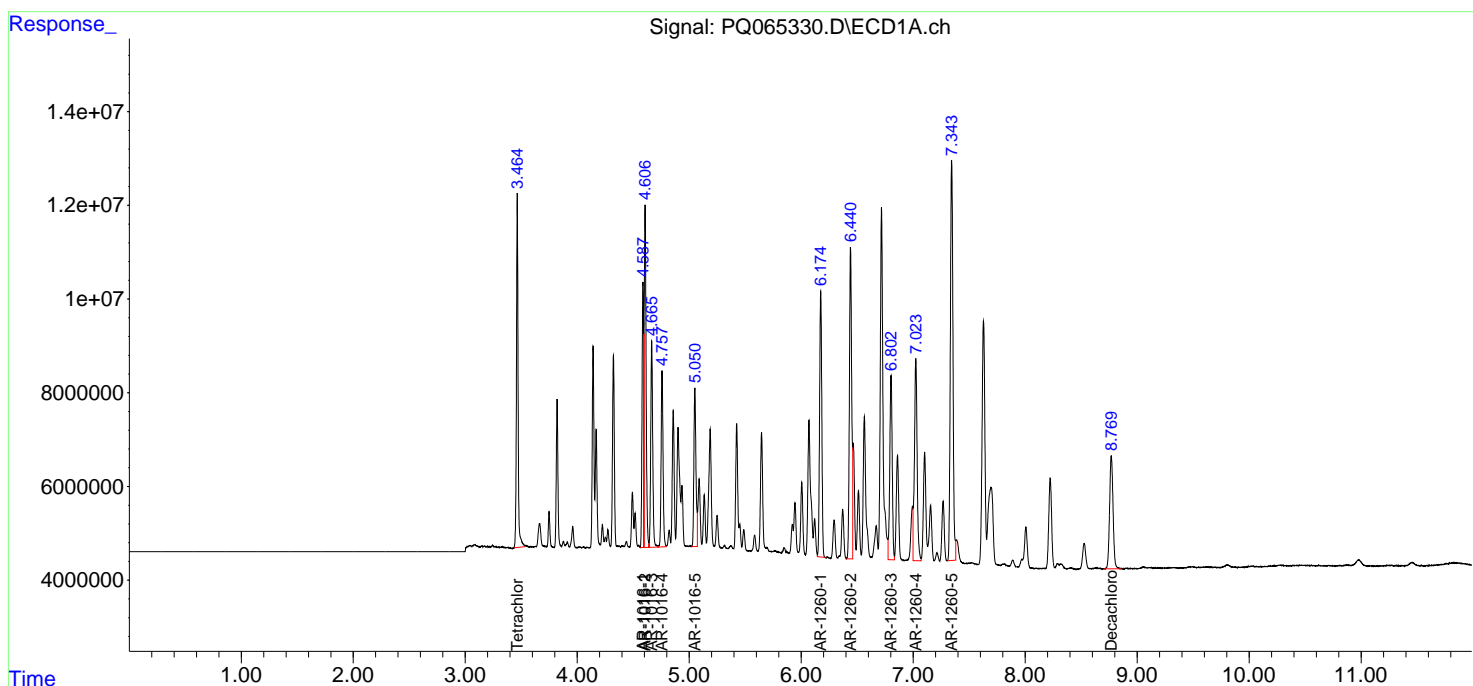
(f)=RT Delta > 1/2 Window (#)=Amounts differ by > 25% (m)=manual int.

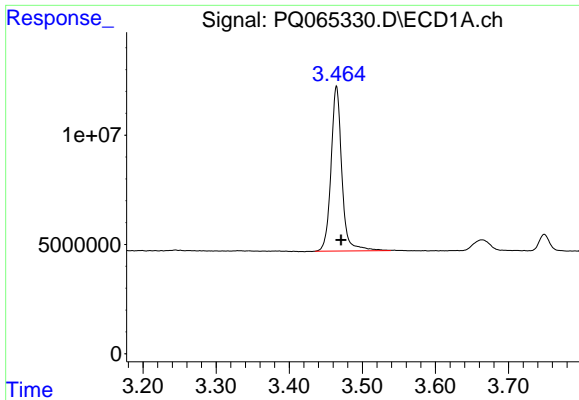
Data Path : Z:\pestpcbsrv\HPCHEM1\ECD_Q\Data\PQ020824\
 Data File : PQ065330.D
 Signal(s) : Signal #1: ECD1A.ch Signal #2: ECD2B.ch
 Acq On : 08 Feb 2024 19:35
 Operator : YP\AJ
 Sample : P1391-01MS
 Misc :
 ALS Vial : 23 Sample Multiplier: 1

Instrument :
 ECD_Q
 ClientSampleId :
 SP-1MS

Integration File signal 1: autoint1.e
 Integration File signal 2: autoint2.e
 Quant Time: Feb 08 21:27:02 2024
 Quant Method : Z:\pestpcbsrv\HPCHEM1\ECD_Q\Method\PQ011724.M
 Quant Title : GC EXTRACTABLES
 QLast Update : Thu Jan 18 00:09:27 2024
 Response via : Initial Calibration
 Integrator: ChemStation

Volume Inj. : 2 µl
 Signal #1 Phase : ZB-MR1 Signal #2 Phase: ZB-MR2
 Signal #1 Info : 30Mx0.32mmx 0.50µ Signal #2 Info : 30M x 0.32mm x 0.25µm

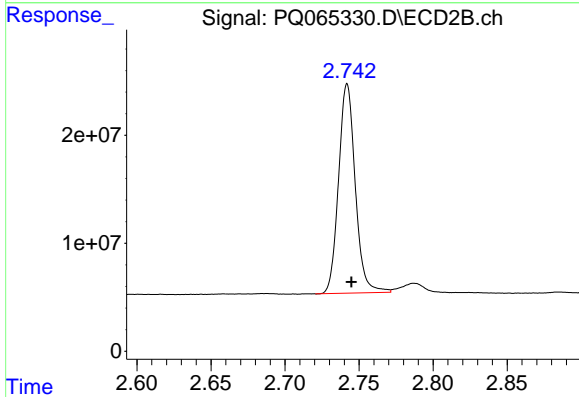




#1 Tetrachloro-m-xylene

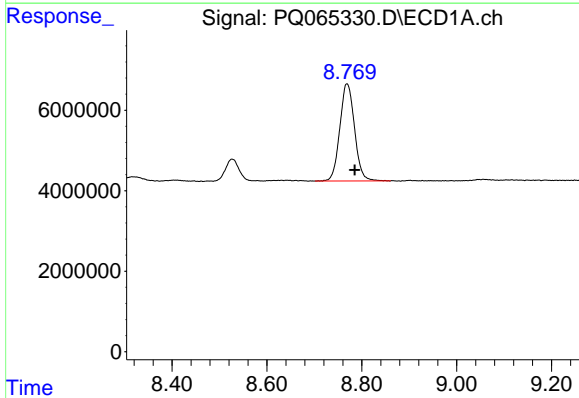
R.T.: 3.465 min
 Delta R.T.: -0.006 min
 Response: 77698317
 Conc: 20.86 ng/ml

Instrument :
 ECD_Q
 ClientSampleId :
 SP-1MS



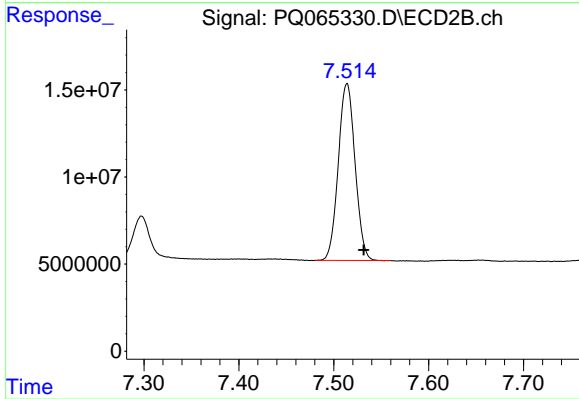
#1 Tetrachloro-m-xylene

R.T.: 2.742 min
 Delta R.T.: -0.003 min
 Response: 152259959
 Conc: 22.80 ng/ml



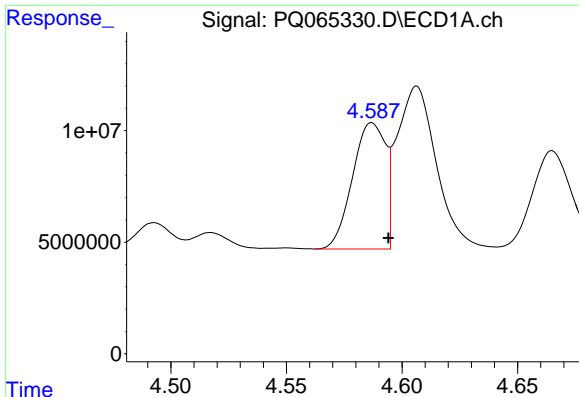
#2 Decachlorobiphenyl

R.T.: 8.769 min
 Delta R.T.: -0.016 min
 Response: 51942915
 Conc: 16.81 ng/ml



#2 Decachlorobiphenyl

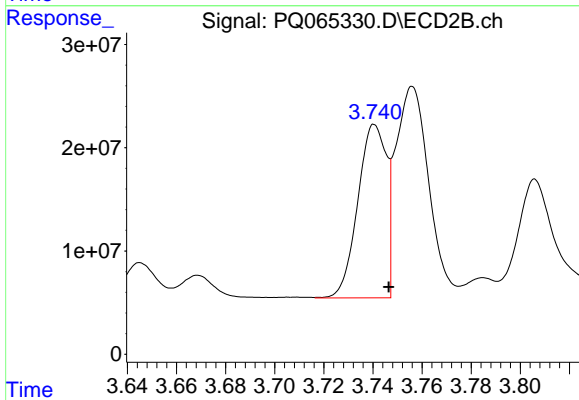
R.T.: 7.514 min
 Delta R.T.: -0.017 min
 Response: 124860881
 Conc: 17.18 ng/ml



#3 AR-1016-1

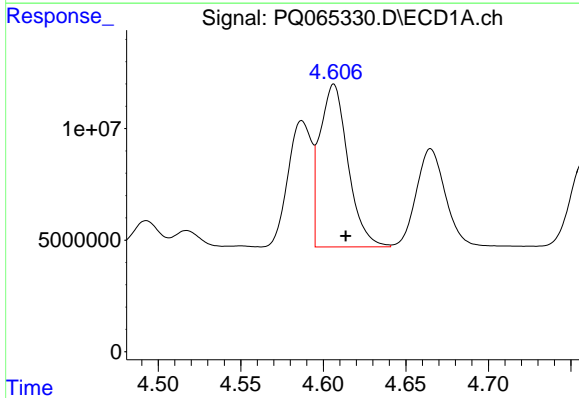
R.T.: 4.587 min
 Delta R.T.: -0.007 min
 Response: 56160590
 Conc: 465.45 ng/ml

Instrument :
 ECD_Q
 ClientSampleId :
 SP-1MS



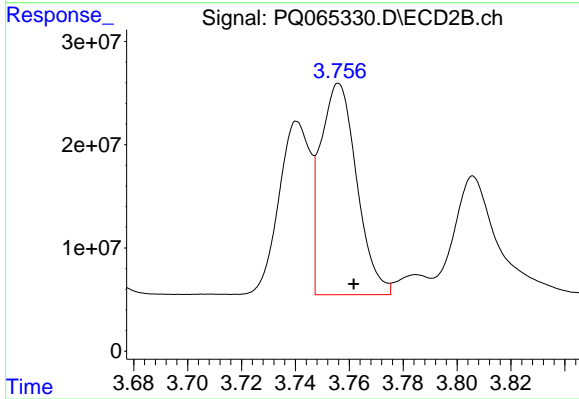
#3 AR-1016-1

R.T.: 3.741 min
 Delta R.T.: -0.006 min
 Response: 135322596
 Conc: 541.88 ng/ml



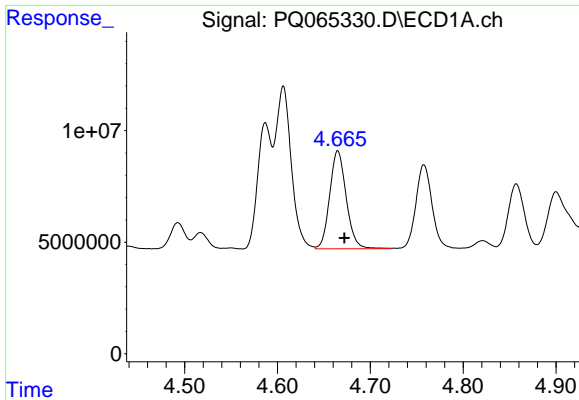
#4 AR-1016-2

R.T.: 4.606 min
 Delta R.T.: -0.007 min
 Response: 86472848
 Conc: 502.51 ng/ml



#4 AR-1016-2

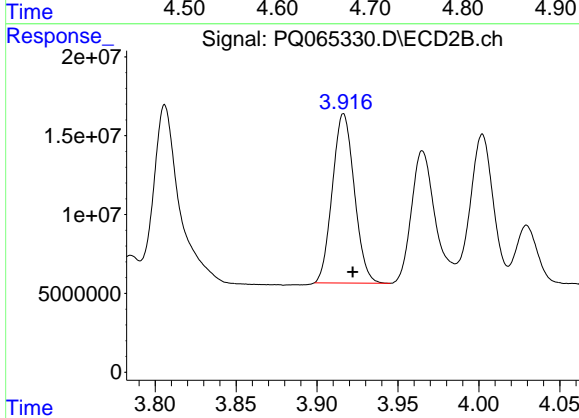
R.T.: 3.756 min
 Delta R.T.: -0.006 min
 Response: 191293615
 Conc: 555.84 ng/ml



#5 AR-1016-3

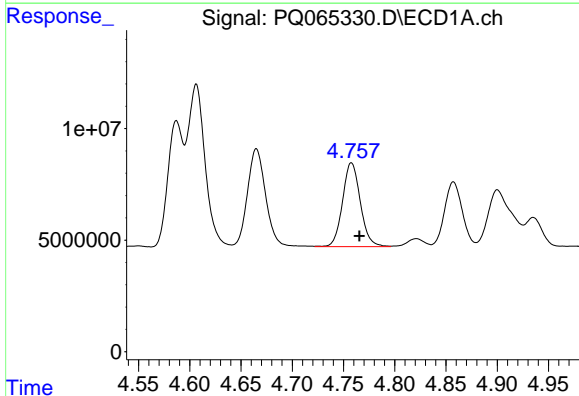
R.T.: 4.665 min
 Delta R.T.: -0.007 min
 Response: 54445825
 Conc: 495.50 ng/ml

Instrument :
 ECD_Q
 ClientSampleId :
 SP-1MS



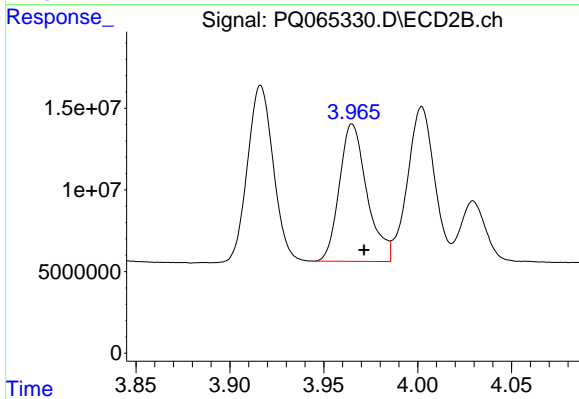
#5 AR-1016-3

R.T.: 3.916 min
 Delta R.T.: -0.006 min
 Response: 101378586
 Conc: 529.58 ng/ml



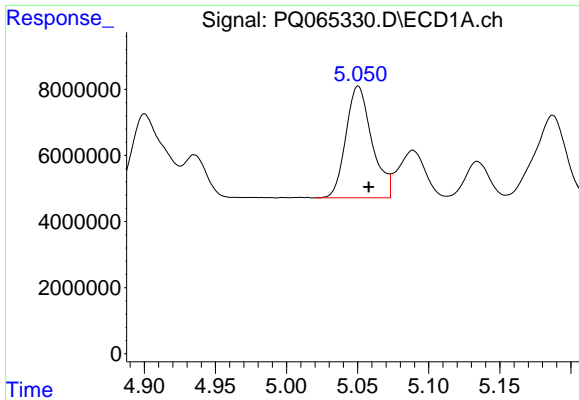
#6 AR-1016-4

R.T.: 4.758 min
 Delta R.T.: -0.008 min
 Response: 45348003
 Conc: 494.66 ng/ml



#6 AR-1016-4

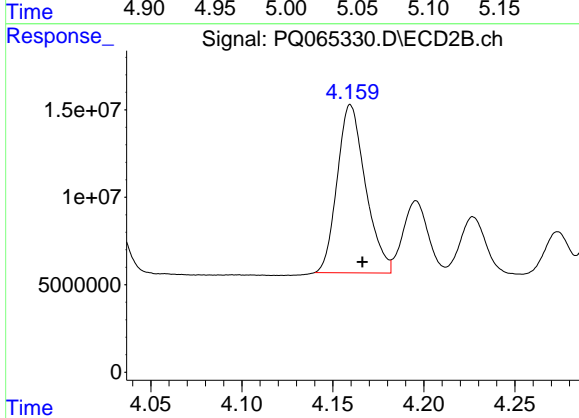
R.T.: 3.965 min
 Delta R.T.: -0.006 min
 Response: 85918113
 Conc: 534.11 ng/ml



#7 AR-1016-5

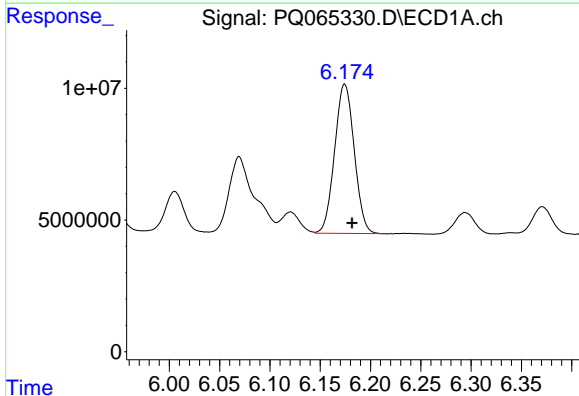
R.T.: 5.050 min
 Delta R.T.: -0.007 min
 Response: 43082456
 Conc: 489.71 ng/ml

Instrument :
 ECD_Q
 ClientSampleId :
 SP-1MS



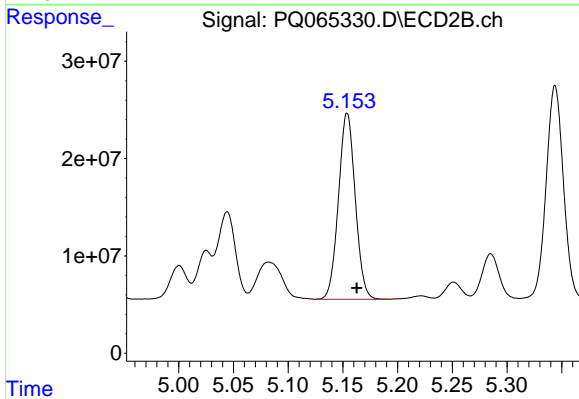
#7 AR-1016-5

R.T.: 4.160 min
 Delta R.T.: -0.007 min
 Response: 103807387
 Conc: 522.72 ng/ml



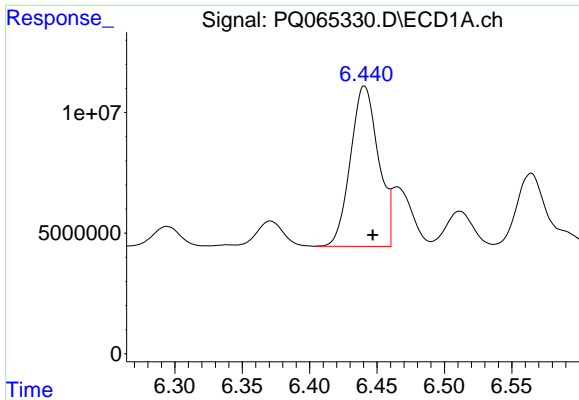
#31 AR-1260-1

R.T.: 6.174 min
 Delta R.T.: -0.008 min
 Response: 76779909
 Conc: 436.01 ng/ml



#31 AR-1260-1

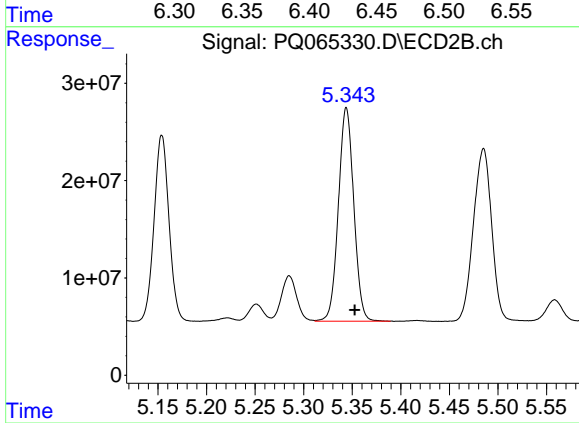
R.T.: 5.154 min
 Delta R.T.: -0.009 min
 Response: 204164410
 Conc: 507.30 ng/ml



#32 AR-1260-2

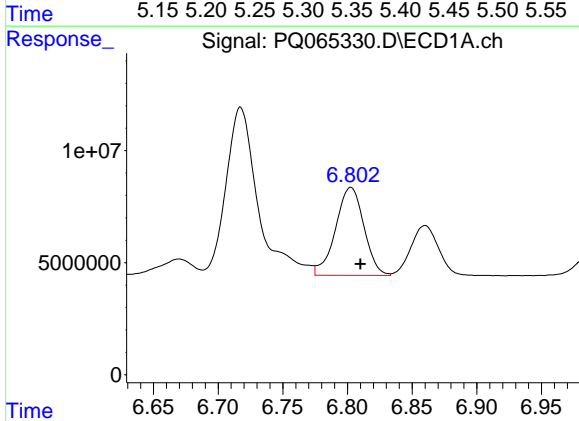
R.T.: 6.441 min
 Delta R.T.: -0.006 min
 Response: 96128142
 Conc: 420.81 ng/ml

Instrument :
 ECD_Q
 ClientSampleId :
 SP-1MS



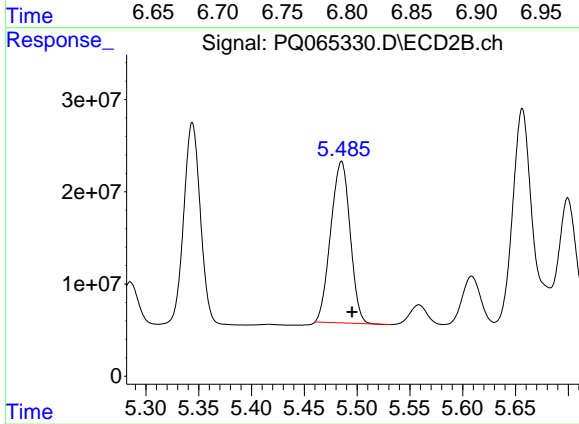
#32 AR-1260-2

R.T.: 5.344 min
 Delta R.T.: -0.009 min
 Response: 241843036
 Conc: 494.51 ng/ml



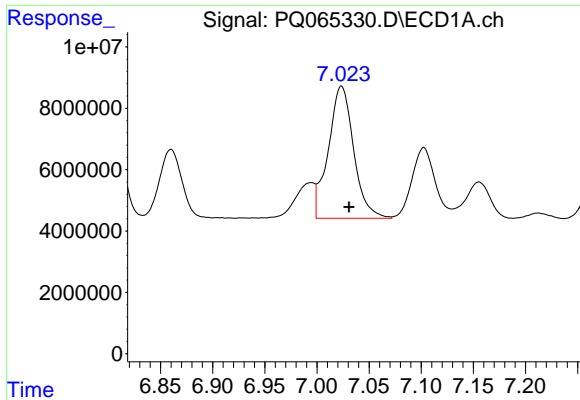
#33 AR-1260-3

R.T.: 6.803 min
 Delta R.T.: -0.007 min
 Response: 59955518
 Conc: 373.42 ng/ml



#33 AR-1260-3

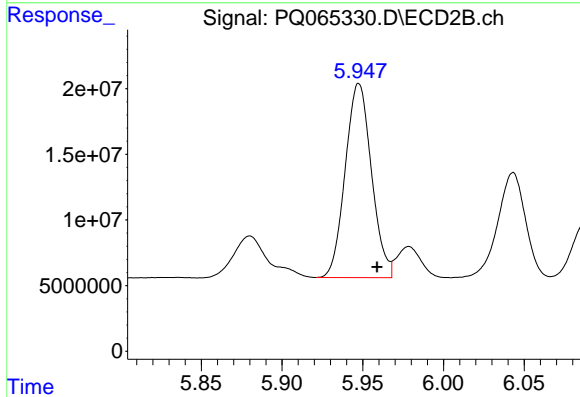
R.T.: 5.485 min
 Delta R.T.: -0.010 min
 Response: 223792842
 Conc: 467.87 ng/ml



#34 AR-1260-4

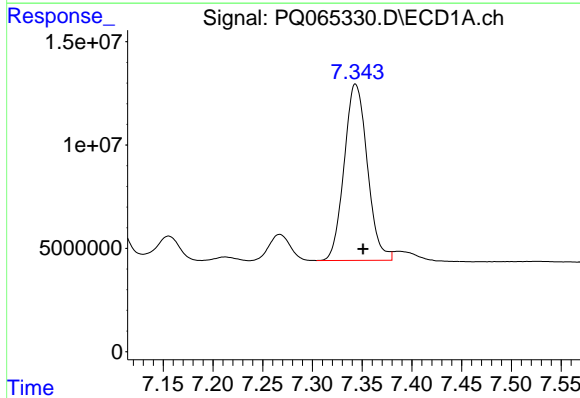
R.T.: 7.023 min
 Delta R.T.: -0.007 min
 Response: 72774236
 Conc: 409.21 ng/ml

Instrument :
 ECD_Q
 ClientSampleId :
 SP-1MS



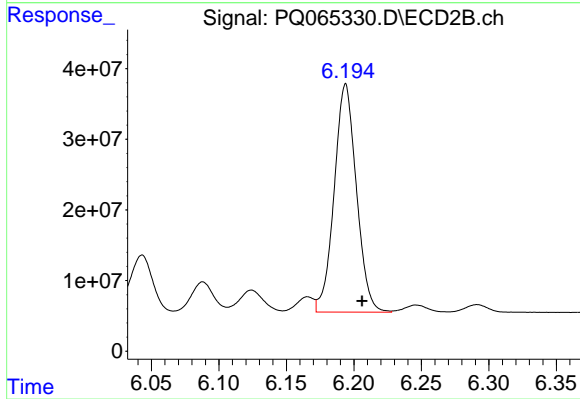
#34 AR-1260-4

R.T.: 5.948 min
 Delta R.T.: -0.011 min
 Response: 167016334
 Conc: 429.22 ng/ml



#35 AR-1260-5

R.T.: 7.343 min
 Delta R.T.: -0.007 min
 Response: 138216042
 Conc: 376.48 ng/ml



#35 AR-1260-5

R.T.: 6.194 min
 Delta R.T.: -0.012 min
 Response: 370213863
 Conc: 424.19 ng/ml