

Data Path : Z:\pestpcbsrv\HPCHEM1\ECD_Q\Data\PQ020924\
 Data File : PQ065366.D
 Signal(s) : Signal #1: ECD1A.ch Signal #2: ECD2B.ch
 Acq On : 09 Feb 2024 12:44
 Operator : YP\AJ
 Sample : AR1248CCC500
 Misc :
 ALS Vial : 5 Sample Multiplier: 1

Instrument :
 ECD_Q
 ClientSampleId :
 AR1248CCC500

Integration File signal 1: autoint1.e
 Integration File signal 2: autoint2.e
 Quant Time: Feb 09 21:55:41 2024
 Quant Method : Z:\pestpcbsrv\HPCHEM1\ECD_Q\Method\PQ011724.M
 Quant Title : GC EXTRACTABLES
 QLast Update : Thu Jan 18 00:09:27 2024
 Response via : Initial Calibration
 Integrator: ChemStation

Volume Inj. : 2 µl
 Signal #1 Phase : ZB-MR1 Signal #2 Phase: ZB-MR2
 Signal #1 Info : 30Mx0.32mmx 0.50µ Signal #2 Info : 30M x 0.32mm x 0.25µm

Compound	RT#1	RT#2	Resp#1	Resp#2	ng/ml	ng/ml

System Monitoring Compounds						
1) SA Tetrachlo...	3.472	2.740	188.0E6	377.9E6	50.476	56.596
2) SA Decachlor...	8.792	7.516	151.4E6	381.8E6	48.997	52.532
Target Compounds						
21) L5 AR-1248-1	4.598	3.740	34185083	82719189	440.475	492.731
22) L5 AR-1248-2	4.870	3.965	50410695	118.2E6	487.646	504.183
23) L5 AR-1248-3	5.063	4.002	58603609	113.3E6	482.293	503.757
24) L5 AR-1248-4	5.466	4.160	65707382	139.2E6	461.099	499.511
25) L5 AR-1248-5	5.501	4.534	61576309	143.4E6	437.104	501.361

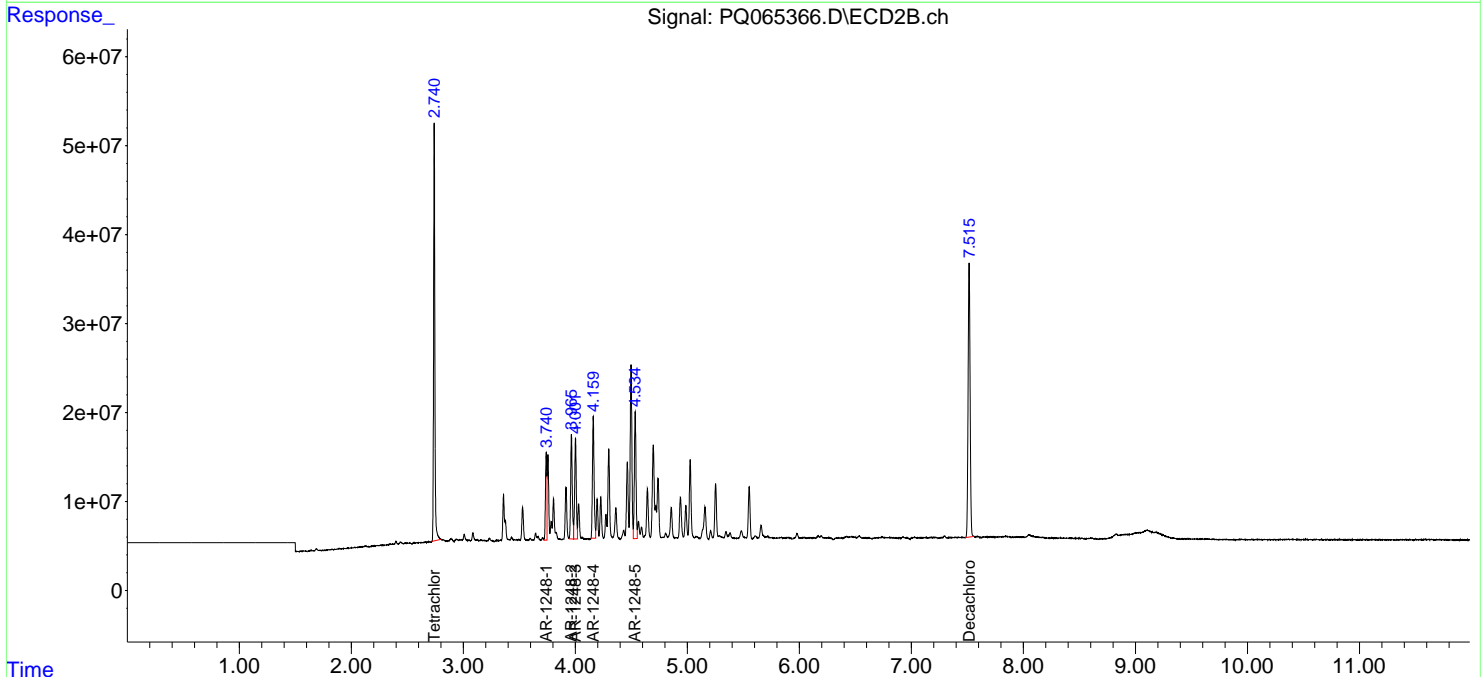
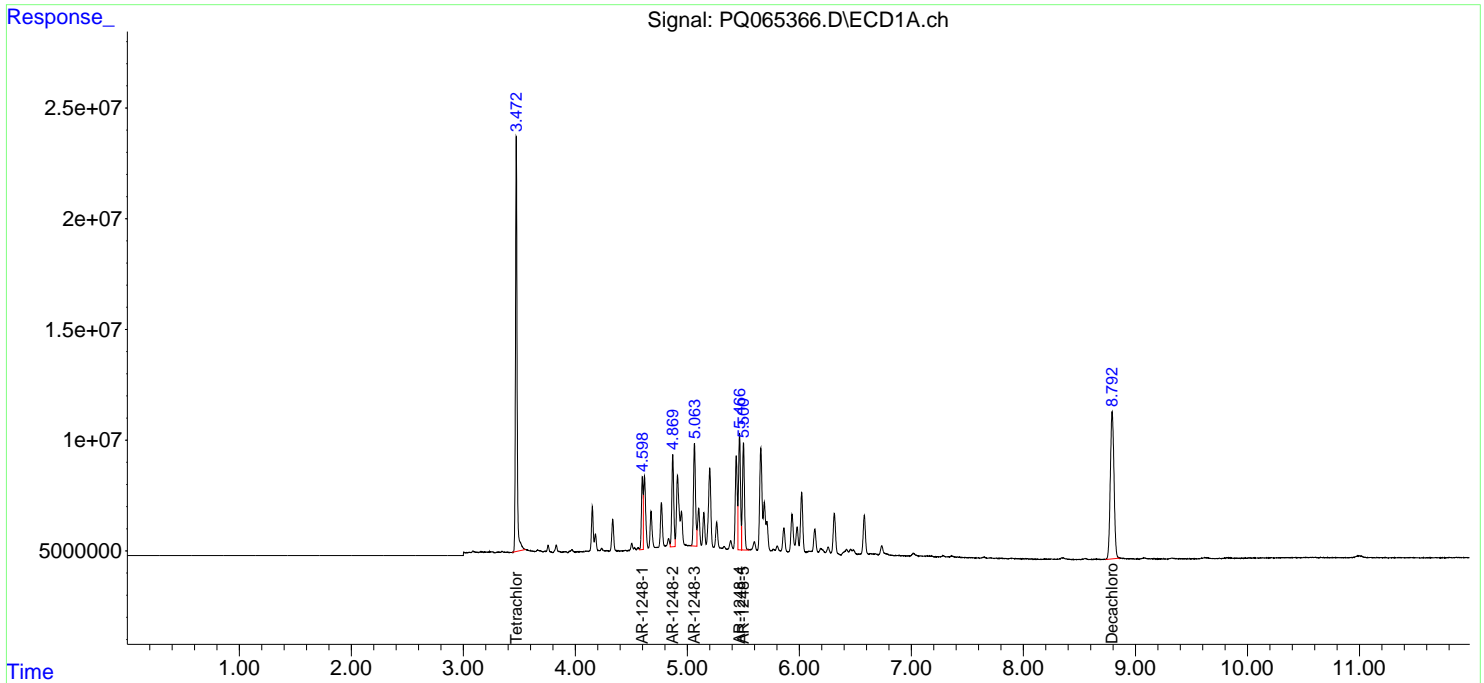
(f)=RT Delta > 1/2 Window (#)=Amounts differ by > 25% (m)=manual int.

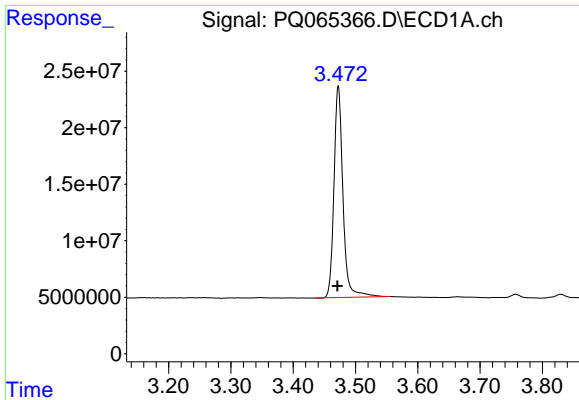
Data Path : Z:\pestpcbsrv\HPCHEM1\ECD_Q\Data\PQ020924\
 Data File : PQ065366.D
 Signal(s) : Signal #1: ECD1A.ch Signal #2: ECD2B.ch
 Acq On : 09 Feb 2024 12:44
 Operator : YP\AJ
 Sample : AR1248CCC500
 Misc :
 ALS Vial : 5 Sample Multiplier: 1

Instrument :
 ECD_Q
 ClientSampleId :
 AR1248CCC500

Integration File signal 1: autoint1.e
 Integration File signal 2: autoint2.e
 Quant Time: Feb 09 21:55:41 2024
 Quant Method : Z:\pestpcbsrv\HPCHEM1\ECD_Q\Method\PQ011724.M
 Quant Title : GC EXTRACTABLES
 QLast Update : Thu Jan 18 00:09:27 2024
 Response via : Initial Calibration
 Integrator: ChemStation

Volume Inj. : 2 µl
 Signal #1 Phase : ZB-MR1 Signal #2 Phase: ZB-MR2
 Signal #1 Info : 30Mx0.32mmx 0.50µ Signal #2 Info : 30M x 0.32mm x 0.25µm

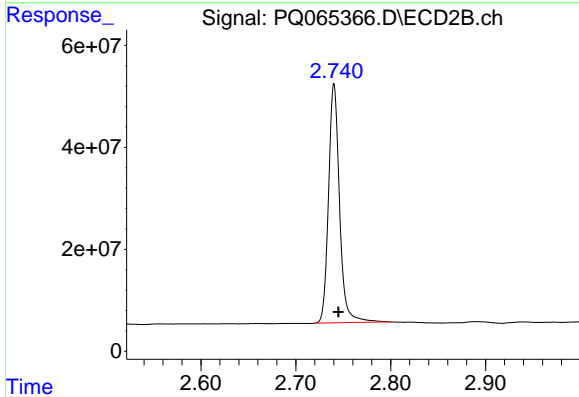




#1 Tetrachloro-m-xylene

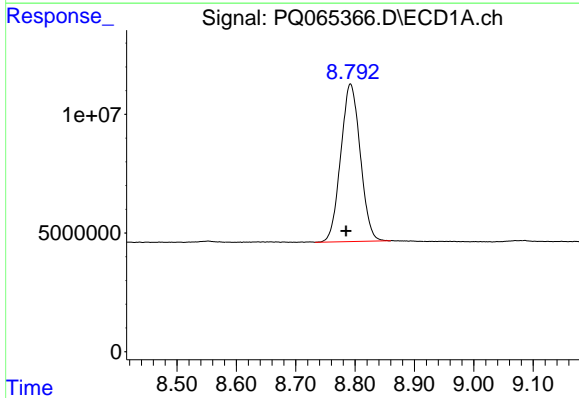
R.T.: 3.472 min
 Delta R.T.: 0.001 min
 Response: 188038729
 Conc: 50.48 ng/ml

Instrument :
 ECD_Q
 ClientSampleId :
 AR1248CCC500



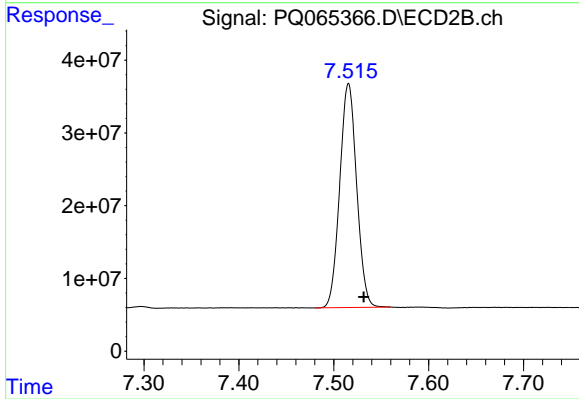
#1 Tetrachloro-m-xylene

R.T.: 2.740 min
 Delta R.T.: -0.004 min
 Response: 377921419
 Conc: 56.60 ng/ml



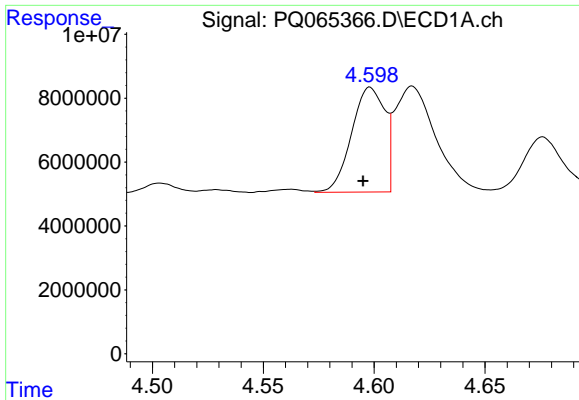
#2 Decachlorobiphenyl

R.T.: 8.792 min
 Delta R.T.: 0.007 min
 Response: 151423935
 Conc: 49.00 ng/ml



#2 Decachlorobiphenyl

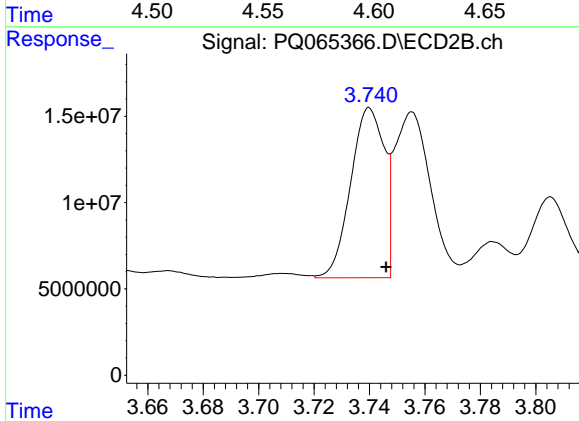
R.T.: 7.516 min
 Delta R.T.: -0.016 min
 Response: 381771982
 Conc: 52.53 ng/ml



#21 AR-1248-1

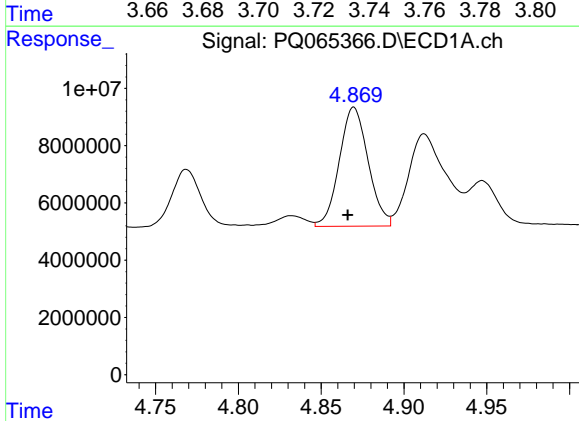
R.T.: 4.598 min
 Delta R.T.: 0.003 min
 Response: 34185083
 Conc: 440.48 ng/ml

Instrument :
 ECD_Q
 ClientSampleId :
 AR1248CCC500



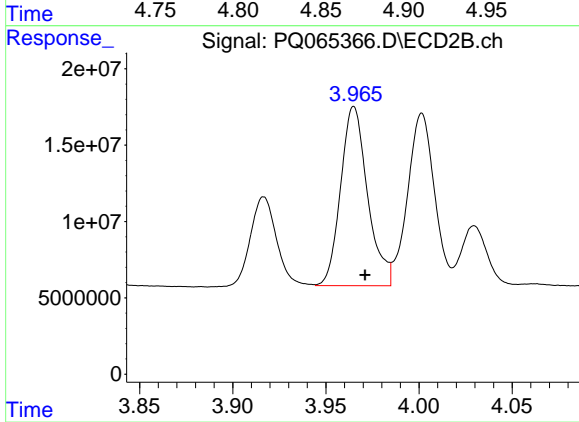
#21 AR-1248-1

R.T.: 3.740 min
 Delta R.T.: -0.006 min
 Response: 82719189
 Conc: 492.73 ng/ml



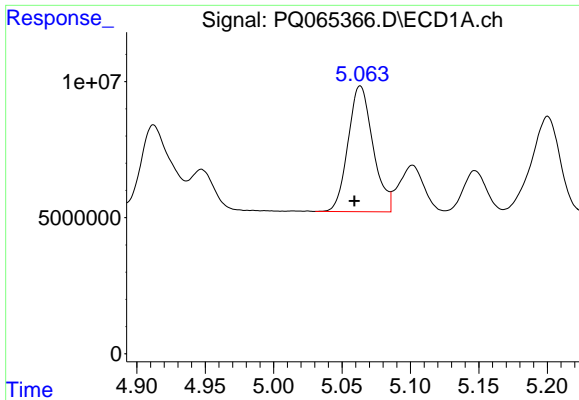
#22 AR-1248-2

R.T.: 4.870 min
 Delta R.T.: 0.004 min
 Response: 50410695
 Conc: 487.65 ng/ml



#22 AR-1248-2

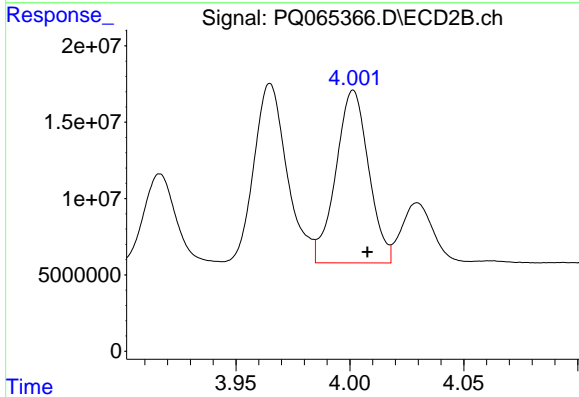
R.T.: 3.965 min
 Delta R.T.: -0.006 min
 Response: 118162815
 Conc: 504.18 ng/ml



#23 AR-1248-3

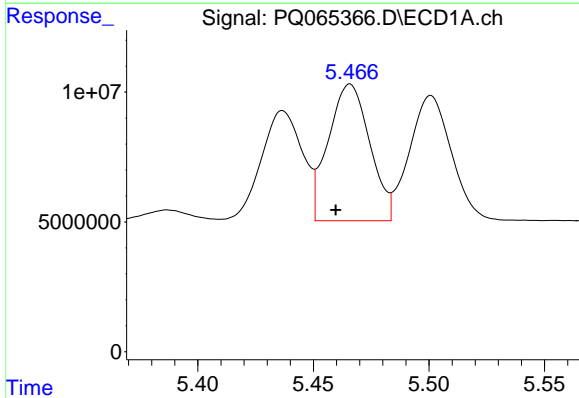
R.T.: 5.063 min
 Delta R.T.: 0.004 min
 Response: 58603609
 Conc: 482.29 ng/ml

Instrument :
 ECD_Q
 ClientSampleId :
 AR1248CCC500



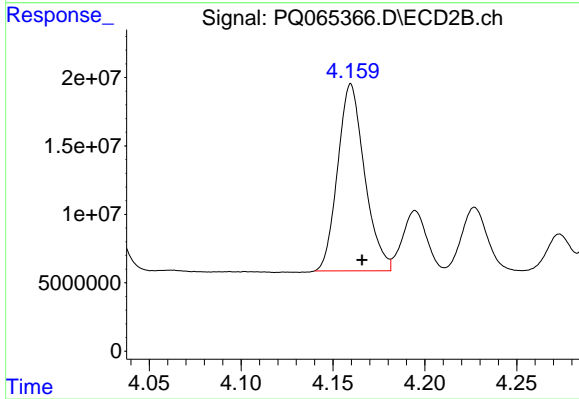
#23 AR-1248-3

R.T.: 4.002 min
 Delta R.T.: -0.006 min
 Response: 113272099
 Conc: 503.76 ng/ml



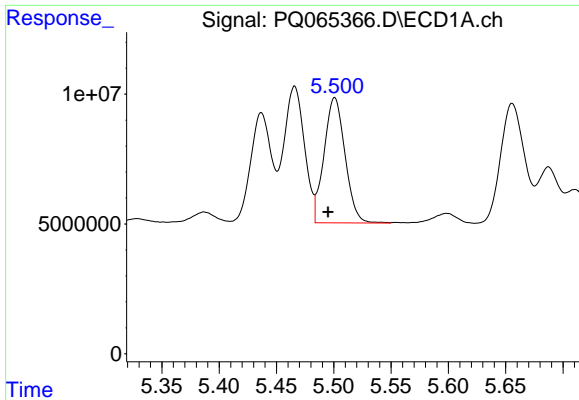
#24 AR-1248-4

R.T.: 5.466 min
 Delta R.T.: 0.006 min
 Response: 65707382
 Conc: 461.10 ng/ml



#24 AR-1248-4

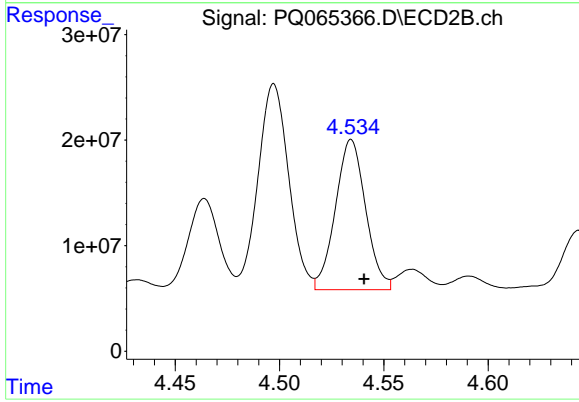
R.T.: 4.160 min
 Delta R.T.: -0.006 min
 Response: 139228308
 Conc: 499.51 ng/ml



#25 AR-1248-5

R.T.: 5.501 min
 Delta R.T.: 0.006 min
 Response: 61576309
 Conc: 437.10 ng/ml

Instrument :
 ECD_Q
 ClientSampleId :
 AR1248CCC500



#25 AR-1248-5

R.T.: 4.534 min
 Delta R.T.: -0.006 min
 Response: 143435746
 Conc: 501.36 ng/ml