

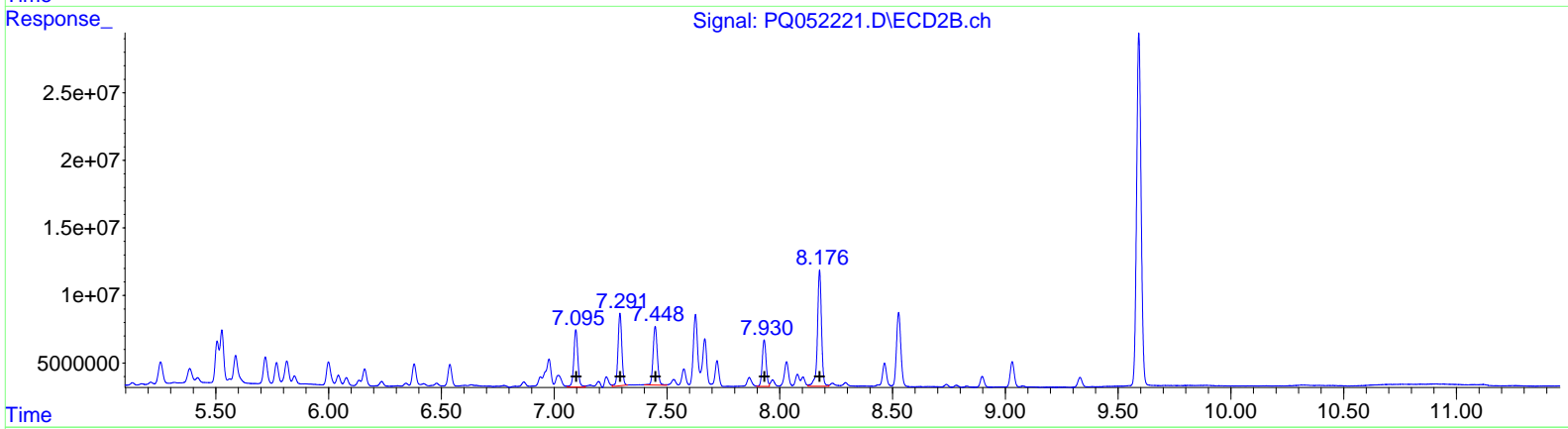
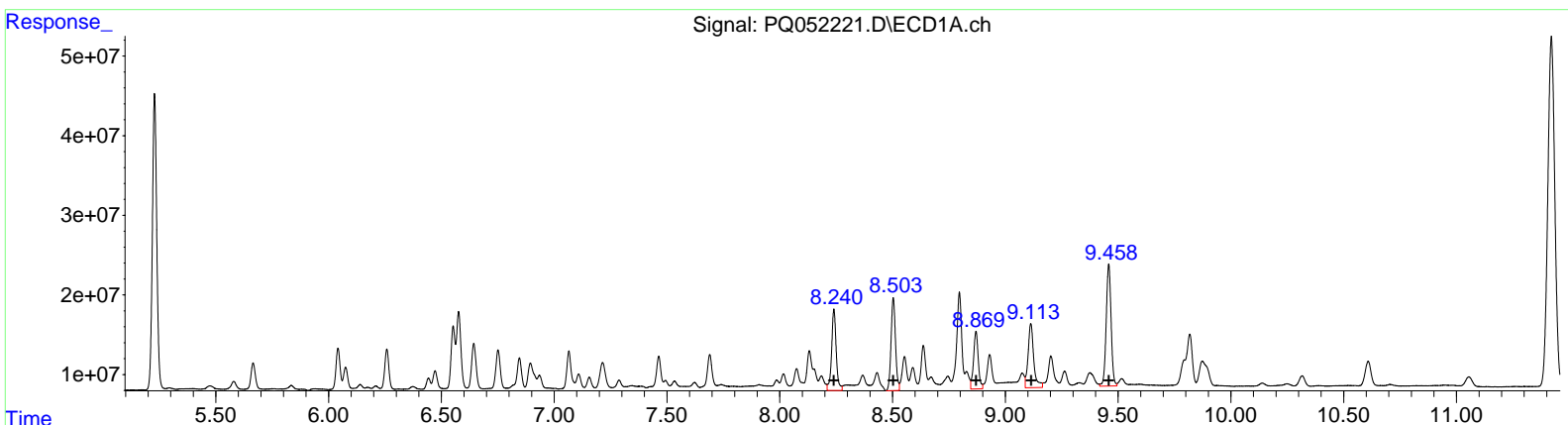
Data Path : Z:\pestpcbsrv\HPCHEM1\ECD_Q\Data\PQ021321\
 Data File : PQ052221.D
 Signal(s) : Signal #1: ECD1A.ch Signal #2: ECD2B.ch
 Acq On : 12 Feb 2021 12:32
 Operator : DD\AJ
 Sample : PB134596BS
 Misc :
 ALS Vial : 14 Sample Multiplier: 1

Instrument :
 ECD_Q
ClientSampled :
 ALCS96

Manual Integrations
APPROVED
 Ankita
 2/15/2021 9:38:38 AM

Integration File signal 1: autoint1.e
 Integration File signal 2: autoint2.e
 Quant Time: Feb 13 03:29:51 2021
 Quant Method : Z:\pestpcbsrv\HPCHEM1\ECD_Q\Method\PQ021221CLP.M
 Quant Title : GC EXTRACTABLES
 QLast Update : Fri Feb 12 07:36:14 2021
 Response via : Initial Calibration
 Integrator: ChemStation

Volume Inj. : 1 µl
 Signal #1 Phase : ZB MR1 Signal #2 Phase: ZB MR2
 Signal #1 Info : 30Mx0.32mmx 0.5µm Signal #2 Info : 30M x 0.32mm x 0.25µm



QEdit

(31) AR-1260-1 (L7)		
R.T.	Response	Conc
8.24	144669399	144.76
8.50	159424388	129.80
8.87	104799929	114.60
9.11	139942801	129.89
9.46	231132566	101.87
(31) AR-1260-1 #2 (L7)		
R.T.	Response	Conc
7.10	53232262	129.97
7.29	63144285	118.93
7.45	56414601	118.04
7.93	41080857	101.42
8.18	107451985	99.80

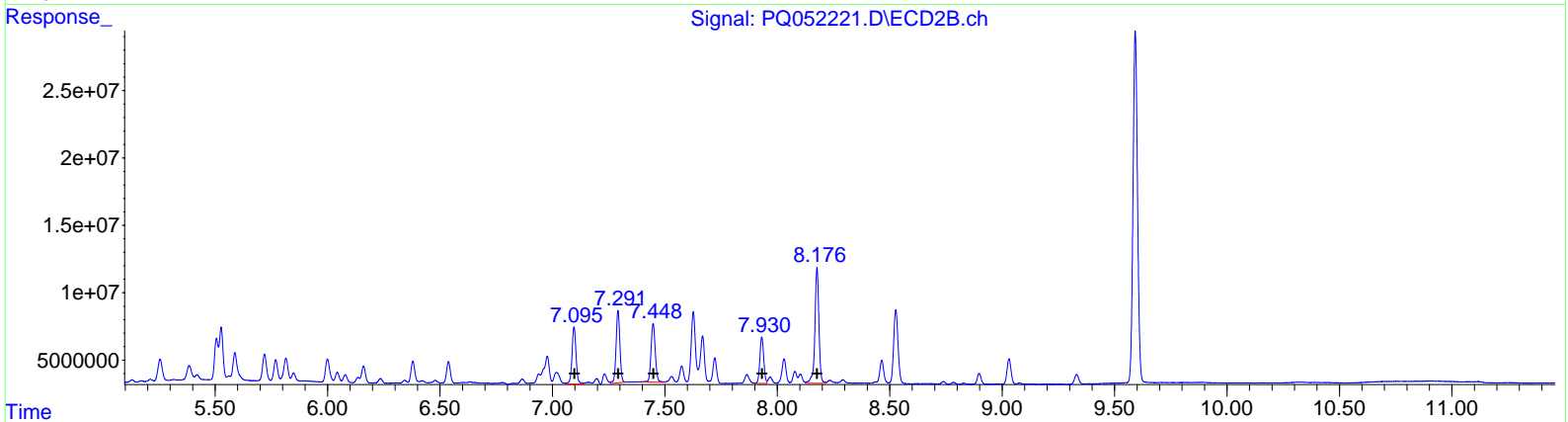
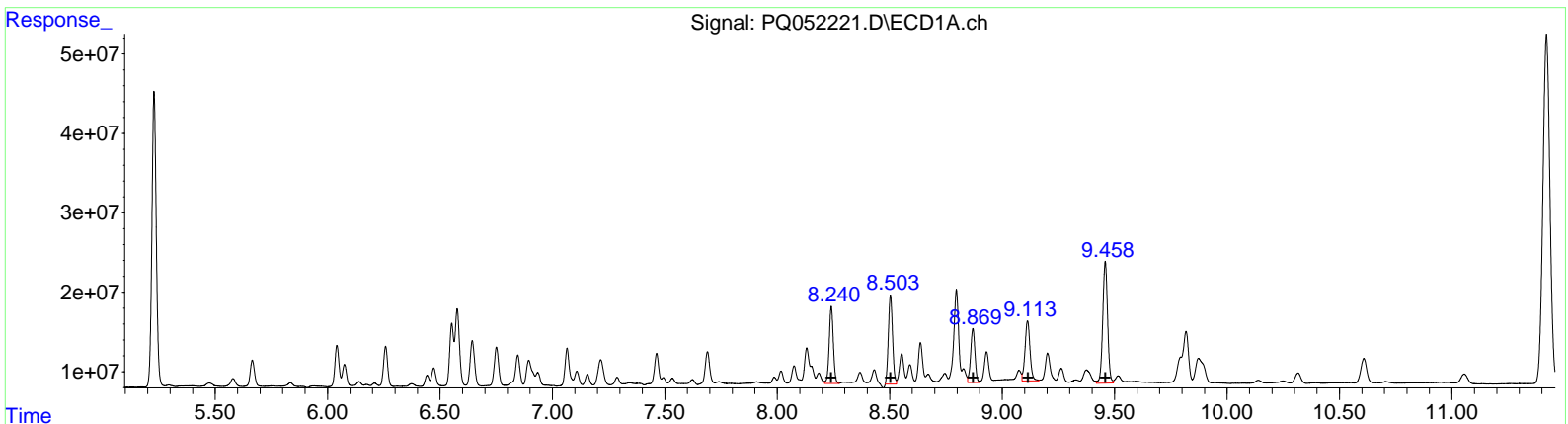
Data Path : Z:\pestpcbsrv\HPCHEM1\ECD_Q\Data\PQ021321\
 Data File : PQ052221.D
 Signal(s) : Signal #1: ECD1A.ch Signal #2: ECD2B.ch
 Acq On : 12 Feb 2021 12:32
 Operator : DD\AJ
 Sample : PB134596BS
 Misc :
 ALS Vial : 14 Sample Multiplier: 1

Instrument :
 ECD_Q
Client Sampled :
 ALCS96

Manual Integrations
APPROVED
 Ankita
 2/15/2021 9:38:38 AM

Integration File signal 1: autoint1.e
 Integration File signal 2: autoint2.e
 Quant Time: Feb 13 03:29:51 2021
 Quant Method : Z:\pestpcbsrv\HPCHEM1\ECD_Q\Method\PQ021221CLP.M
 Quant Title : GC EXTRACTABLES
 QLast Update : Fri Feb 12 07:36:14 2021
 Response via : Initial Calibration
 Integrator: ChemStation

Volume Inj. : 1 µl
 Signal #1 Phase : ZB MR1 Signal #2 Phase: ZB MR2
 Signal #1 Info : 30Mx0.32mmx 0.5µm Signal #2 Info : 30M x 0.32mm x 0.25µm



QEdit

(31) AR-1260-1 #2 (L7)		
R.T.	Response	Conc
8.24	123812018	123.89
8.50	144759626	117.86
8.87	90756304	99.24
9.11	116330223	107.97
9.46	231132566	101.87
(31) AR-1260-1 #2 (L7)		
R.T.	Response	Conc
7.10	53232262	129.97
7.29	63144285	118.93
7.45	56414601	118.04
7.93	41080857	101.42
8.18	107451985	99.80

Quantitation Report (QT Reviewed)

Data Path : Z:\pestpcbsrv\HPCHEM1\ECD_Q\Data\PQ021321\
 Data File : PQ052221.D
 Signal(s) : Signal #1: ECD1A.ch Signal #2: ECD2B.ch
 Acq On : 12 Feb 2021 12:32
 Operator : DD\AJ
 Sample : PB134596BS
 Misc :
 ALS Vial : 14 Sample Multiplier: 1

Instrument :
 ECD_Q
 ClientSampleId :
 ALCS96

Manual Integrations
 APPROVED

Ankita
 2/15/2021 9:38:38 AM

Integration File signal 1: autoint1.e
 Integration File signal 2: autoint2.e
 Quant Time: Feb 13 03:29:51 2021
 Quant Method : Z:\pestpcbsrv\HPCHEM1\ECD_Q\Method\PQ021221CLP.M
 Quant Title : GC EXTRACTABLES
 QLast Update : Fri Feb 12 07:36:14 2021
 Response via : Initial Calibration
 Integrator: ChemStation

Volume Inj. : 1 µl
 Signal #1 Phase : ZB MR1 Signal #2 Phase: ZB MR2
 Signal #1 Info : 30Mx0.32mmx 0.5µm Signal #2 Info : 30M x 0.32mm x 0.25µm

Compound	RT#1	RT#2	Resp#1	Resp#2	ng/ml	ng/ml

System Monitoring Compounds						
1) SA Tetrachlo...	5.228	4.246	498.1E6	170.1E6	20.282	20.276
2) SA Decachlor...	11.421	9.592	945.3E6	360.2E6	46.124	46.706
Target Compounds						
3) L1 AR-1016-1	6.552	5.506	93065190	35406644	115.826	114.947
4) L1 AR-1016-2	6.577	5.527	131.5E6	47545413	111.419	110.889
5) L1 AR-1016-3	6.644	5.720	79088490	23930041	110.812	109.242
6) L1 AR-1016-4	6.751	5.769	68228221	18365357	113.334	109.668
7) L1 AR-1016-5	7.065	6.000	63341147	22290938	112.577	104.380
31) L7 AR-1260-1	8.240	7.096	123.8E6	53232262	123.890m	129.969
32) L7 AR-1260-2	8.503	7.292	144.8E6	63144285	117.856m	118.926
33) L7 AR-1260-3	8.869	7.448	90756304	56414601	99.241m	118.043
34) L7 AR-1260-4	9.113	7.931	116.3E6	41080857	107.971m	101.423
35) L7 AR-1260-5	9.459	8.177	231.1E6	107.5E6	101.868	99.796

Handwritten note: 2/15/21

(f)=RT Delta > 1/2 Window (#)=Amounts differ by > 25% (m)=manual int.