

Data Path : Z:\pestpcbsrv\HPCHEM1\ECD_Q\Data\PQ022619\
 Data File : PQ037523.D
 Signal(s) : Signal #1: ECD1A.ch Signal #2: ECD2B.ch
 Acq On : 25 Feb 2019 19:24
 Operator : SM\SJ
 Sample : AR1232ICC1600
 Misc :
 ALS Vial : 17 Sample Multiplier: 1

Instrument :
 ECD_Q
ClientSampleId :
 AR1232501

Manual Integrations
APPROVED
 Sohil
 2/27/2019 3:15:53 PM

Integration File signal 1: autoint1.e
 Integration File signal 2: autoint2.e
 Quant Time: Feb 26 03:08:12 2019
 Quant Method : Z:\pestpcbsrv\HPCHEM1\ECD_Q\Method\PQ022619CLP.M
 Quant Title : GC EXTRACTABLES
 QLast Update : Tue Feb 26 03:06:16 2019
 Response via : Initial Calibration
 Integrator: ChemStation

Volume Inj. : 1 µl
 Signal #1 Phase : ZB MR1 Signal #2 Phase: ZB MR2
 Signal #1 Info : 30Mx0.32mmx 0.5µm Signal #2 Info : 30M x 0.32mm x 0.25µm

Compound	RT#1	RT#2	Resp#1	Resp#2	ng/ml	ng/ml

System Monitoring Compounds						
1) SA Tetrachlo...	4.233	3.657	475.7E6	226.0E6	84.451	87.607
2) SA Decachlor...	9.707	8.553	801.3E6	362.1E6	155.628	153.640
Target Compounds						
11) L3 AR-1232-1	4.606	4.023	174.3E6	90102915	1595.443	1501.438
12) L3 AR-1232-2	5.118	4.736	92735286	106.6E6	1561.086	1552.543
13) L3 AR-1232-3	5.400	4.910	187.8E6	53061099	1516.504m	1535.563
14) L3 AR-1232-4	5.561	4.989	94682309	45736293	1556.156	1495.669
15) L3 AR-1232-5	5.642	5.159	68346647	50668571	1535.780	1508.237

(f)=RT Delta > 1/2 Window (#)=Amounts differ by > 25% (m)=manual int.

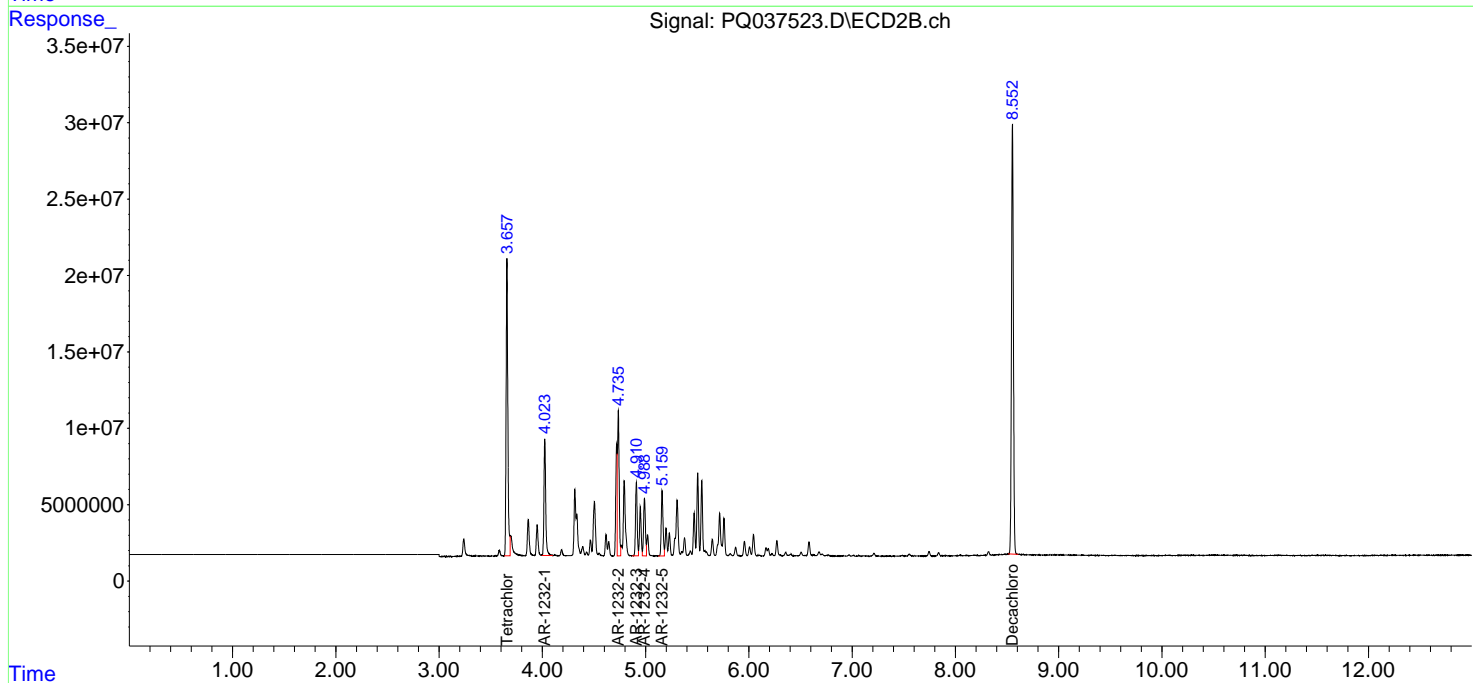
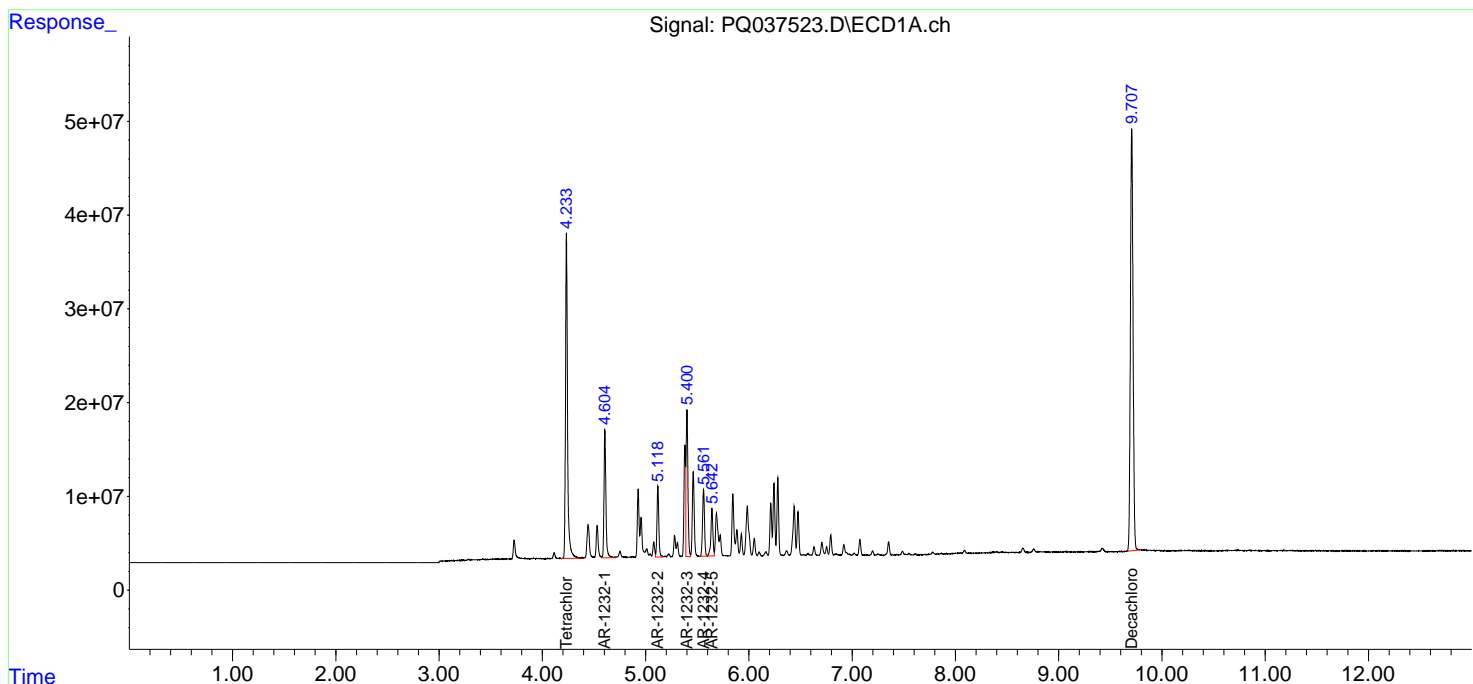
Data Path : Z:\pestpcbsrv\HPCHEM1\ECD_Q\Data\PQ022619\
 Data File : PQ037523.D
 Signal(s) : Signal #1: ECD1A.ch Signal #2: ECD2B.ch
 Acq On : 25 Feb 2019 19:24
 Operator : SM\SJ
 Sample : AR1232ICC1600
 Misc :
 ALS Vial : 17 Sample Multiplier: 1

Instrument :
 ECD_Q
ClientSampled :
 AR1232501

Manual Integrations
APPROVED
 Sohil
 2/27/2019 3:15:53 PM

Integration File signal 1: autoint1.e
 Integration File signal 2: autoint2.e
 Quant Time: Feb 26 03:08:12 2019
 Quant Method : Z:\pestpcbsrv\HPCHEM1\ECD_Q\Method\PQ022619CLP.M
 Quant Title : GC EXTRACTABLES
 QLast Update : Tue Feb 26 03:06:16 2019
 Response via : Initial Calibration
 Integrator: ChemStation

Volume Inj. : 1 µl
 Signal #1 Phase : ZB MR1 Signal #2 Phase: ZB MR2
 Signal #1 Info : 30Mx0.32mmx 0.5µm Signal #2 Info : 30M x 0.32mm x 0.25µm



Data Path : Z:\pestpcbsrv\HPCHEM1\ECD_Q\Data\PQ022619\
 Data File : PQ037523.D
 Signal(s) : Signal #1: ECD1A.ch Signal #2: ECD2B.ch
 Acq On : 25 Feb 2019 19:24
 Operator : SM\SJ
 Sample : AR1232IC1600
 Misc :
 ALS Vial : 17 Sample Multiplier: 1

Instrument :
 ECD_Q
Client Sampled :
 AR1232501

Integration File signal 1: autoint1.e
 Integration File signal 2: autoint2.e
 Quant Time: Feb 26 03:08:12 2019
 Quant Method : Z:\pestpcbsrv\HPCHEM1\ECD_Q\Method\PQ022619CLP.M
 Quant Title : GC EXTRACTABLES
 QLast Update : Tue Feb 26 03:06:16 2019
 Response via : Initial Calibration
 Integrator: ChemStation

Manual Integrations
APPROVED
 Sohil
 2/27/2019 3:15:53 PM

Volume Inj. : 1 µl
 Signal #1 Phase : ZB MR1 Signal #2 Phase: ZB MR2
 Signal #1 Info : 30Mx0.32mmx 0.5µm Signal #2 Info : 30M x 0.32mm x 0.25µm

Compound	RT#1	RT#2	Resp#1	Resp#2	ng/ml	ng/ml

System Monitoring Compounds						
1) SA Tetrachlo...	4.233	3.657	475.7E6	226.0E6	84.451	87.607
2) SA Decachlor...	9.707	8.553	801.3E6	362.1E6	155.628	153.640
Target Compounds						
11) L3 AR-1232-1	4.606	4.023	174.3E6	90102915	1595.443	1501.438
12) L3 AR-1232-2	5.118	4.736	92735286	106.6E6	1561.086	1552.543
13) L3 AR-1232-3	5.400	4.910	187.8E6	53061099	1516.504m	1535.563
14) L3 AR-1232-4	5.561	4.989	94682309	45736293	1556.156	1495.669
15) L3 AR-1232-5	5.642	5.159	68346647	50668571	1535.780	1508.237

> S-J
 02/27/19

(f)=RT Delta > 1/2 Window (#)=Amounts differ by > 25% (m)=manual int.