

Data Path : Z:\pestpcbsrv\HPCHEM1\ECD_Q\Data\PQ022624\
 Data File : PQ065518.D
 Signal(s) : Signal #1: ECD1A.ch Signal #2: ECD2B.ch
 Acq On : 26 Feb 2024 18:42
 Operator : YP\AJ
 Sample : AR1248ICC250
 Misc :
 ALS Vial : 18 Sample Multiplier: 1

Instrument :
 ECD_Q
 ClientSampleId :
 AR1248ICC250

Integration File signal 1: autoint1.e
 Integration File signal 2: autoint2.e
 Quant Time: Feb 27 04:27:15 2024
 Quant Method : Z:\pestpcbsrv\HPCHEM1\ECD_Q\Method\PQ022624.M
 Quant Title : GC EXTRACTABLES
 QLast Update : Tue Feb 27 04:27:05 2024
 Response via : Initial Calibration
 Integrator: ChemStation

Volume Inj. : 2 µl
 Signal #1 Phase : ZB-MR1 Signal #2 Phase: ZB-MR2
 Signal #1 Info : 30Mx0.32mmx 0.50µ Signal #2 Info : 30M x 0.32mm x 0.25µm

| Compound | RT#1 | RT#2 | Resp#1 | Resp#2 | ng/ml | ng/ml |
|-----------------------------|-------|-------|----------|----------|---------|---------|
| ----- | | | | | | |
| System Monitoring Compounds | | | | | | |
| 1) SA Tetrachlo... | 3.445 | 2.739 | 97573033 | 179.4E6 | 25.754 | 26.377 |
| 2) SA Decachlor... | 8.662 | 7.511 | 64413586 | 197.2E6 | 27.161 | 27.276 |
| Target Compounds | | | | | | |
| 21) L5 AR-1248-1 | 4.555 | 3.737 | 20038879 | 40264313 | 269.287 | 274.585 |
| 22) L5 AR-1248-2 | 4.823 | 3.962 | 27721471 | 58621999 | 274.088 | 276.409 |
| 23) L5 AR-1248-3 | 5.015 | 3.999 | 32853987 | 55673450 | 272.254 | 273.537 |
| 24) L5 AR-1248-4 | 5.410 | 4.157 | 36548137 | 69396832 | 270.036 | 274.892 |
| 25) L5 AR-1248-5 | 5.446 | 4.531 | 35595711 | 68807815 | 268.546 | 272.930 |
| ----- | | | | | | |

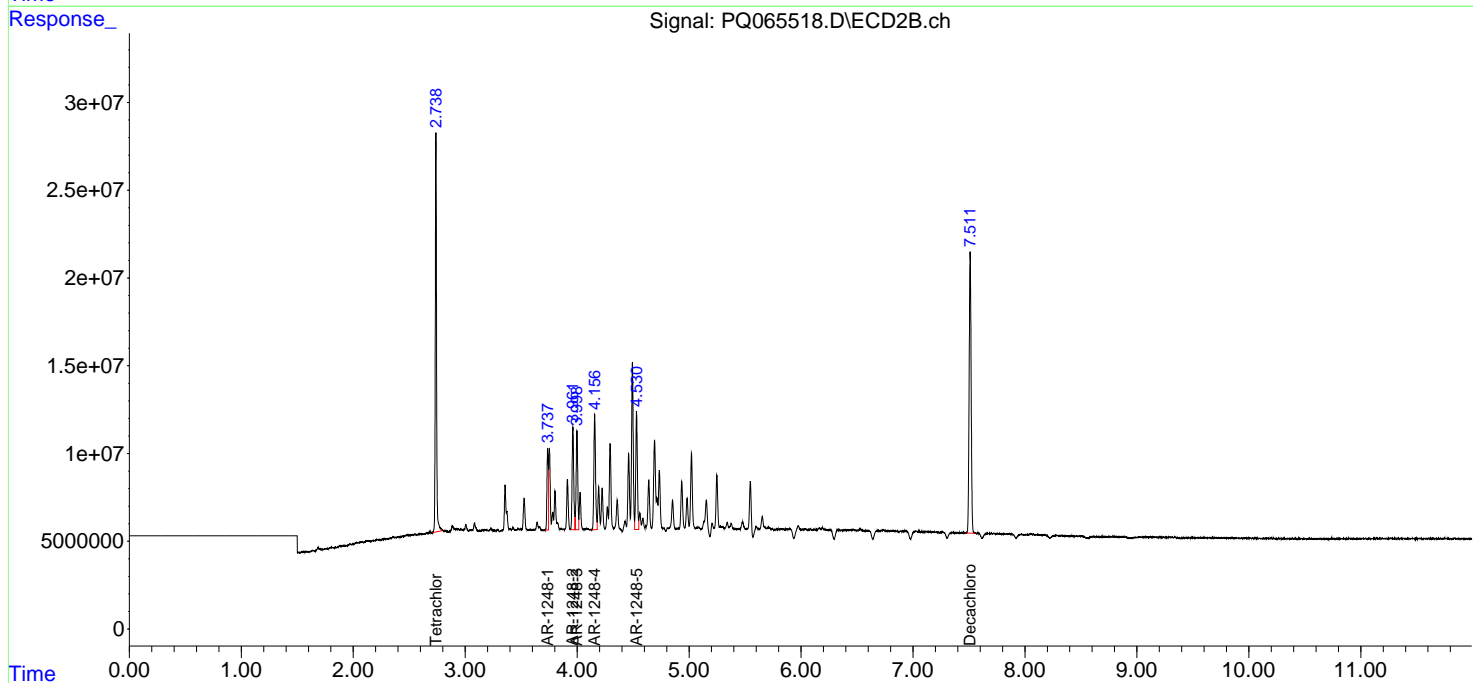
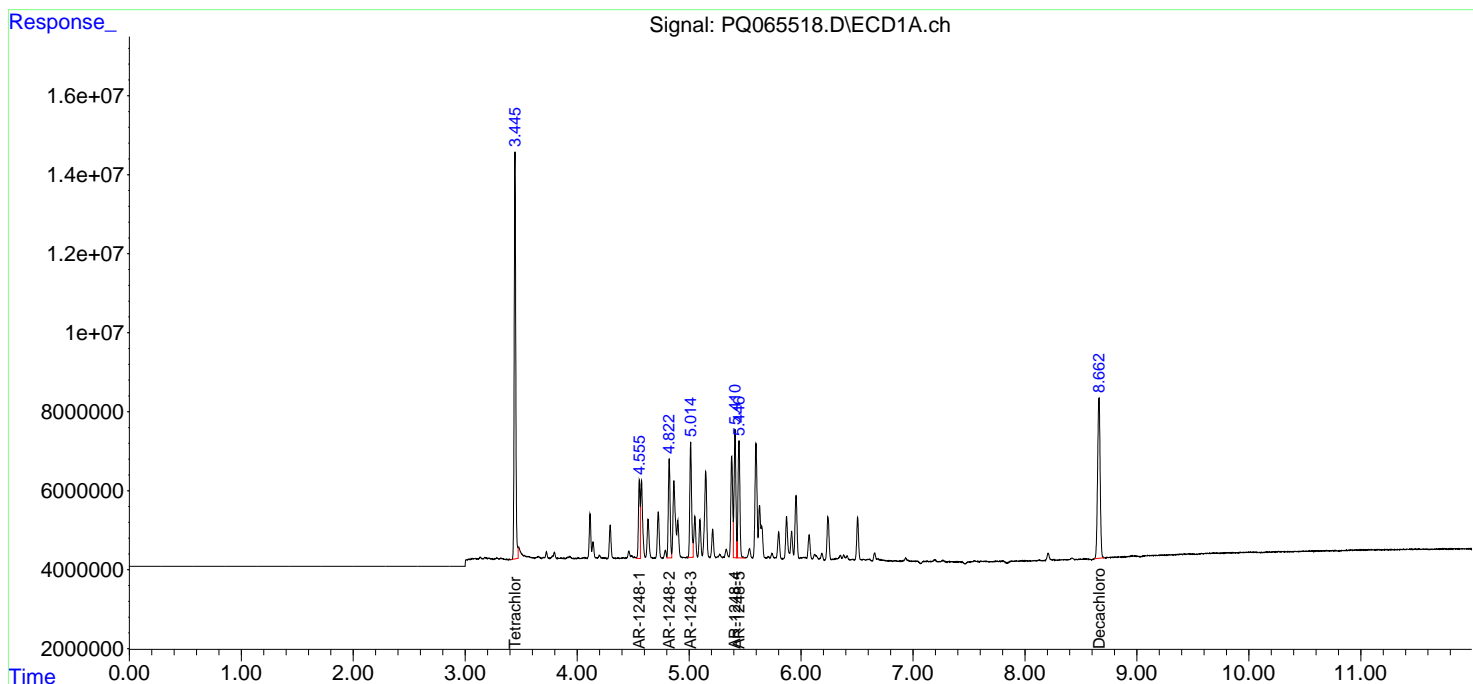
(f)=RT Delta > 1/2 Window (#)=Amounts differ by > 25% (m)=manual int.

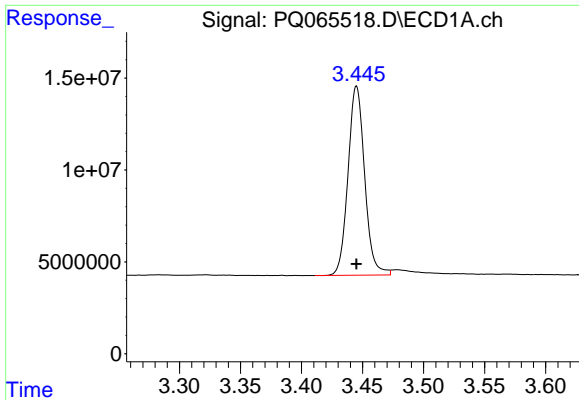
Data Path : Z:\pestpcbsrv\HPCHEM1\ECD_Q\Data\PQ022624\
 Data File : PQ065518.D
 Signal(s) : Signal #1: ECD1A.ch Signal #2: ECD2B.ch
 Acq On : 26 Feb 2024 18:42
 Operator : YP\AJ
 Sample : AR1248ICC250
 Misc :
 ALS Vial : 18 Sample Multiplier: 1

Instrument :
 ECD_Q
 ClientSampleId :
 AR1248ICC250

Integration File signal 1: autoint1.e
 Integration File signal 2: autoint2.e
 Quant Time: Feb 27 04:27:15 2024
 Quant Method : Z:\pestpcbsrv\HPCHEM1\ECD_Q\Method\PQ022624.M
 Quant Title : GC EXTRACTABLES
 QLast Update : Tue Feb 27 04:27:05 2024
 Response via : Initial Calibration
 Integrator: ChemStation

Volume Inj. : 2 µl
 Signal #1 Phase : ZB-MR1 Signal #2 Phase: ZB-MR2
 Signal #1 Info : 30Mx0.32mmx 0.50µ Signal #2 Info : 30M x 0.32mm x 0.25µm

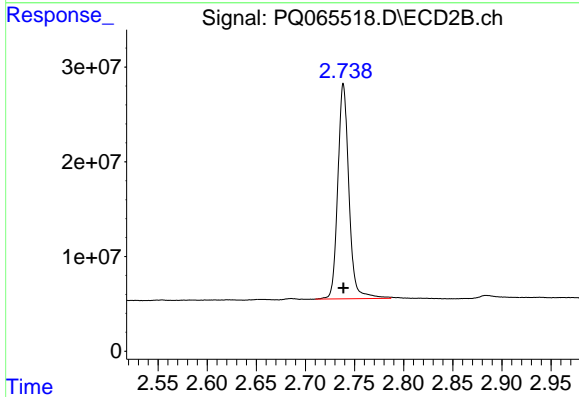




#1 Tetrachloro-m-xylene

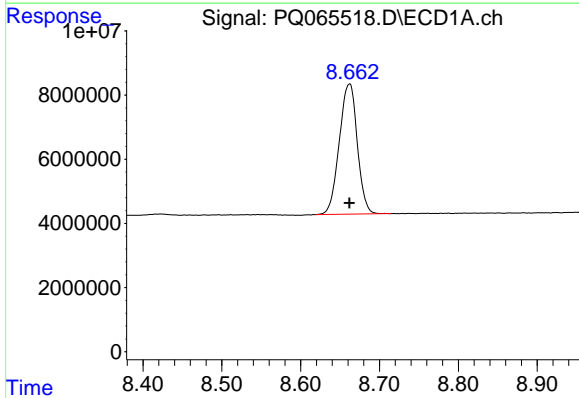
R.T.: 3.445 min
Delta R.T.: 0.000 min
Response: 97573033
Conc: 25.75 ng/ml

Instrument :
ECD_Q
ClientSampleId :
AR1248ICC250



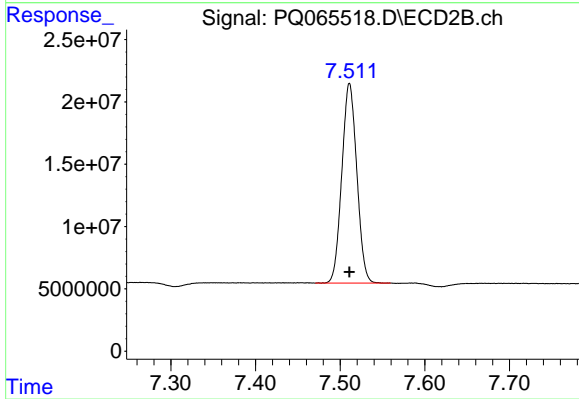
#1 Tetrachloro-m-xylene

R.T.: 2.739 min
Delta R.T.: 0.000 min
Response: 179387383
Conc: 26.38 ng/ml



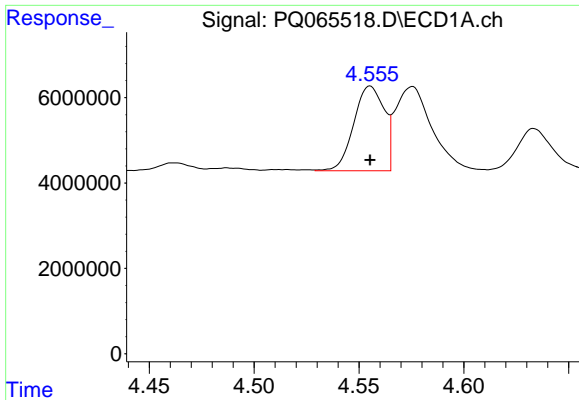
#2 Decachlorobiphenyl

R.T.: 8.662 min
Delta R.T.: 0.000 min
Response: 64413586
Conc: 27.16 ng/ml



#2 Decachlorobiphenyl

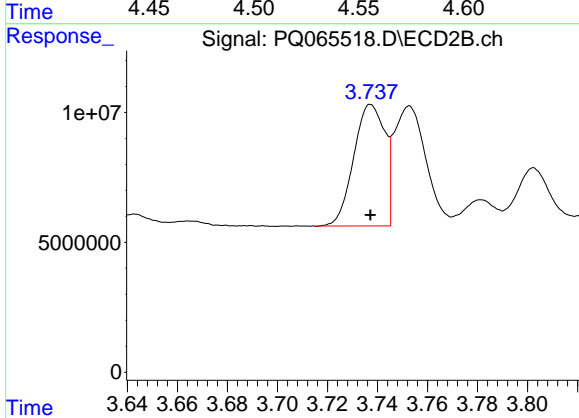
R.T.: 7.511 min
Delta R.T.: 0.000 min
Response: 197162568
Conc: 27.28 ng/ml



#21 AR-1248-1

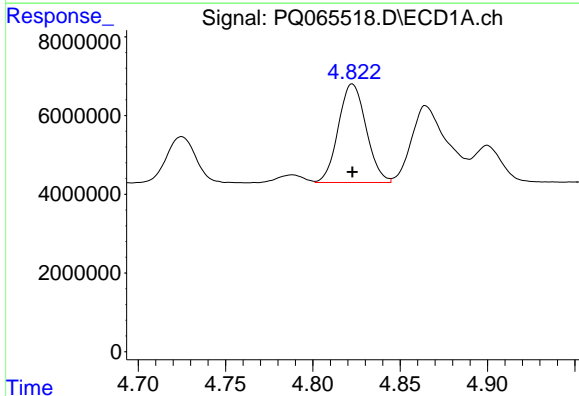
R.T.: 4.555 min
 Delta R.T.: 0.000 min
 Response: 20038879
 Conc: 269.29 ng/ml

Instrument :
 ECD_Q
 ClientSampleId :
 AR1248ICC250



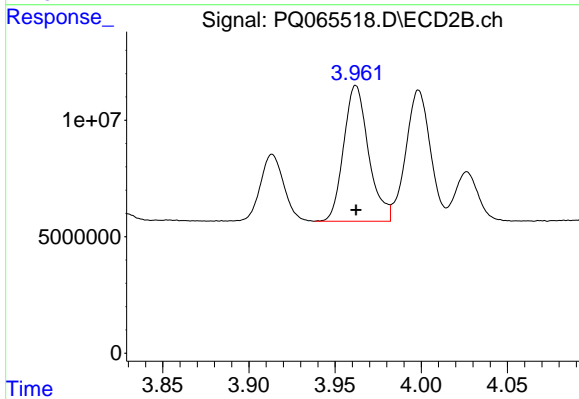
#21 AR-1248-1

R.T.: 3.737 min
 Delta R.T.: 0.000 min
 Response: 40264313
 Conc: 274.59 ng/ml



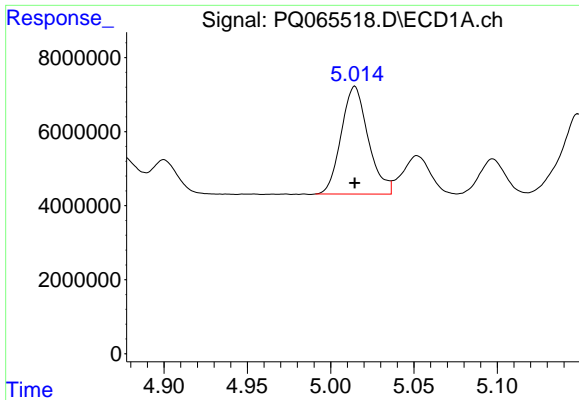
#22 AR-1248-2

R.T.: 4.823 min
 Delta R.T.: 0.000 min
 Response: 27721471
 Conc: 274.09 ng/ml



#22 AR-1248-2

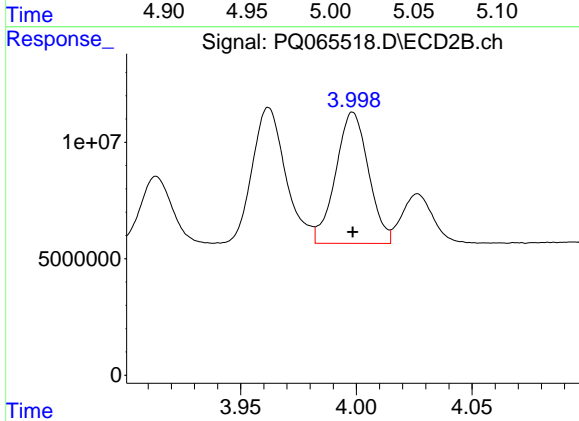
R.T.: 3.962 min
 Delta R.T.: 0.000 min
 Response: 58621999
 Conc: 276.41 ng/ml



#23 AR-1248-3

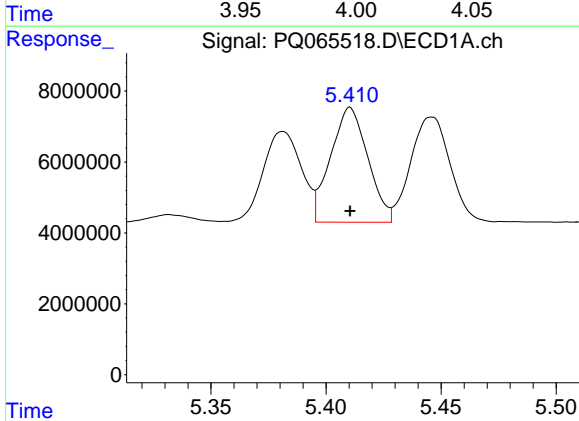
R.T.: 5.015 min
 Delta R.T.: 0.000 min
 Response: 32853987
 Conc: 272.25 ng/ml

Instrument :
 ECD_Q
 ClientSampleId :
 AR1248ICC250



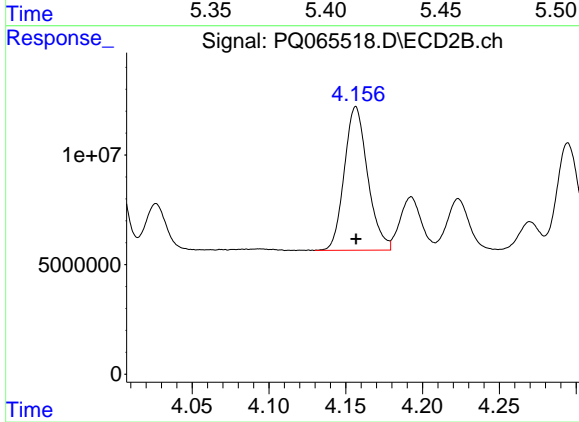
#23 AR-1248-3

R.T.: 3.999 min
 Delta R.T.: 0.000 min
 Response: 55673450
 Conc: 273.54 ng/ml



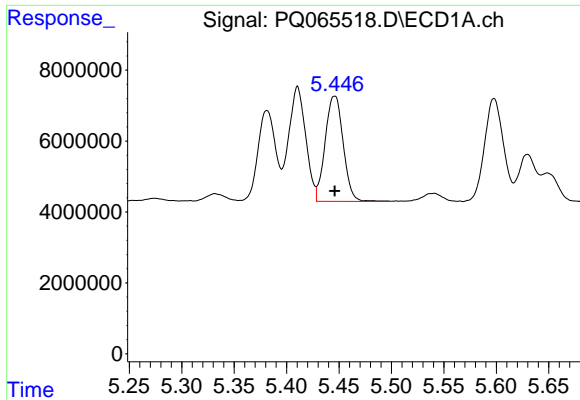
#24 AR-1248-4

R.T.: 5.410 min
 Delta R.T.: 0.000 min
 Response: 36548137
 Conc: 270.04 ng/ml



#24 AR-1248-4

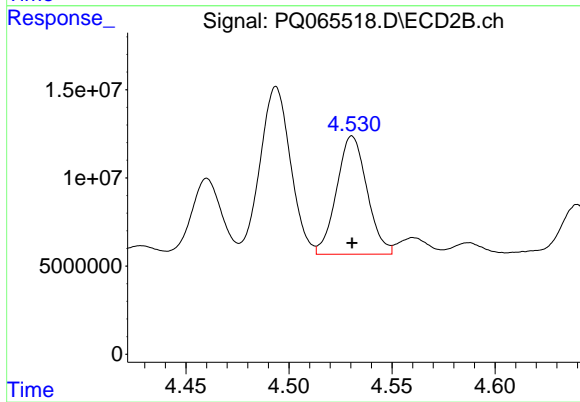
R.T.: 4.157 min
 Delta R.T.: 0.000 min
 Response: 69396832
 Conc: 274.89 ng/ml



#25 AR-1248-5

R.T.: 5.446 min
Delta R.T.: 0.000 min
Response: 35595711
Conc: 268.55 ng/ml

Instrument :
ECD_Q
ClientSampleId :
AR1248ICC250



#25 AR-1248-5

R.T.: 4.531 min
Delta R.T.: 0.000 min
Response: 68807815
Conc: 272.93 ng/ml