

Data Path : Z:\pestpcbsrv\HPCHEM1\ECD_Q\Data\PQ022624\
 Data File : PQ065528.D
 Signal(s) : Signal #1: ECD1A.ch Signal #2: ECD2B.ch
 Acq On : 26 Feb 2024 21:16
 Operator : YP\AJ
 Sample : AR1268ICC500
 Misc :
 ALS Vial : 28 Sample Multiplier: 1

Instrument :
 ECD_Q
 ClientSampleId :
 AR1268ICC500

Integration File signal 1: autoint1.e
 Integration File signal 2: autoint2.e
 Quant Time: Feb 27 05:02:27 2024
 Quant Method : Z:\pestpcbsrv\HPCHEM1\ECD_Q\Method\PQ022624.M
 Quant Title : GC EXTRACTABLES
 QLast Update : Tue Feb 27 05:01:02 2024
 Response via : Initial Calibration
 Integrator: ChemStation

Volume Inj. : 2 µl
 Signal #1 Phase : ZB-MR1 Signal #2 Phase: ZB-MR2
 Signal #1 Info : 30Mx0.32mmx 0.50µ Signal #2 Info : 30M x 0.32mm x 0.25µm

Compound	RT#1	RT#2	Resp#1	Resp#2	ng/ml	ng/ml

System Monitoring Compounds						
1) SA Tetrachlo...	3.451	2.739	196.6E6	345.6E6	50.000	50.000
2) SA Decachlor...	8.667	7.513	206.0E6	620.6E6	50.000	50.000
Target Compounds						
41) L9 AR-1268-1	7.548	6.471	188.7E6	546.1E6	500.000	500.000
42) L9 AR-1268-2	7.627	6.534	173.5E6	503.7E6	500.000	500.000
43) L9 AR-1268-3	7.809	6.734	142.1E6	432.5E6	500.000	500.000
44) L9 AR-1268-4	8.132	7.027	62857310	190.9E6	500.000	500.000
45) L9 AR-1268-5	8.428	7.295	423.1E6	1287.4E6	500.000	500.000

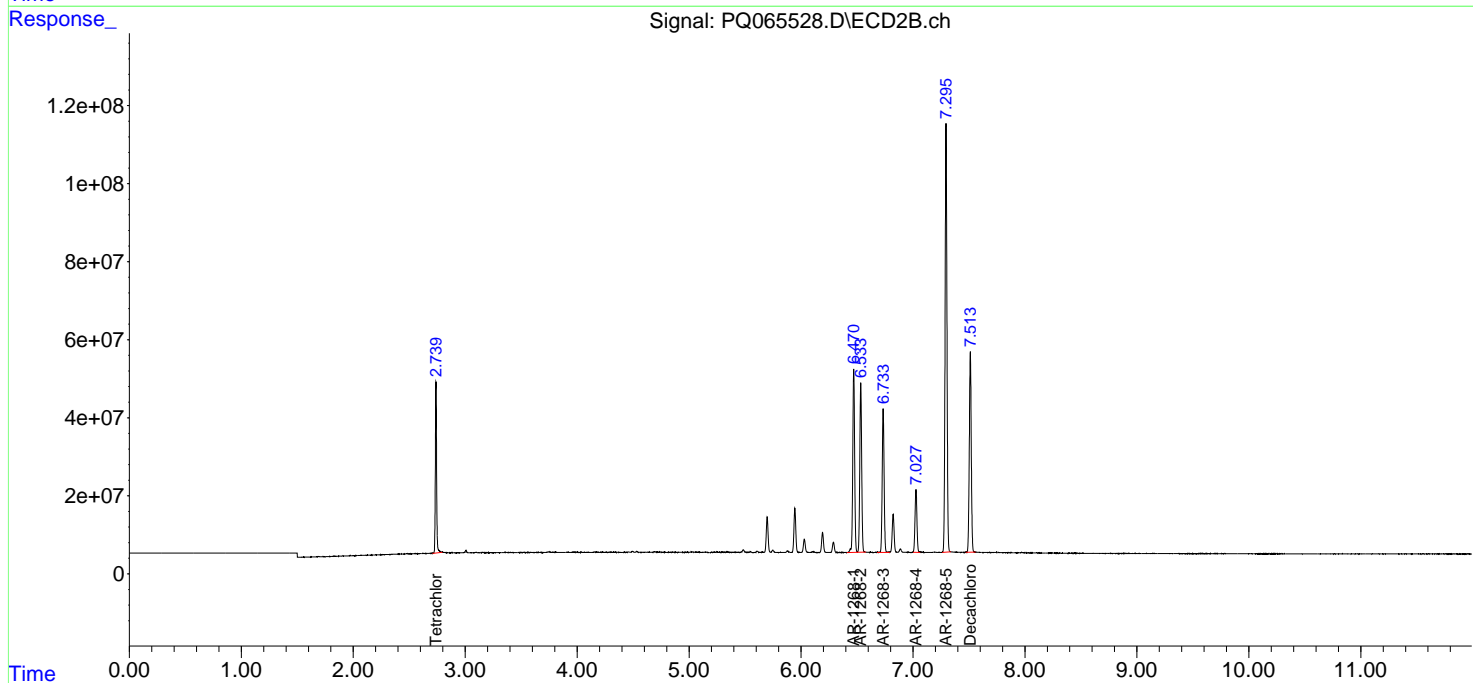
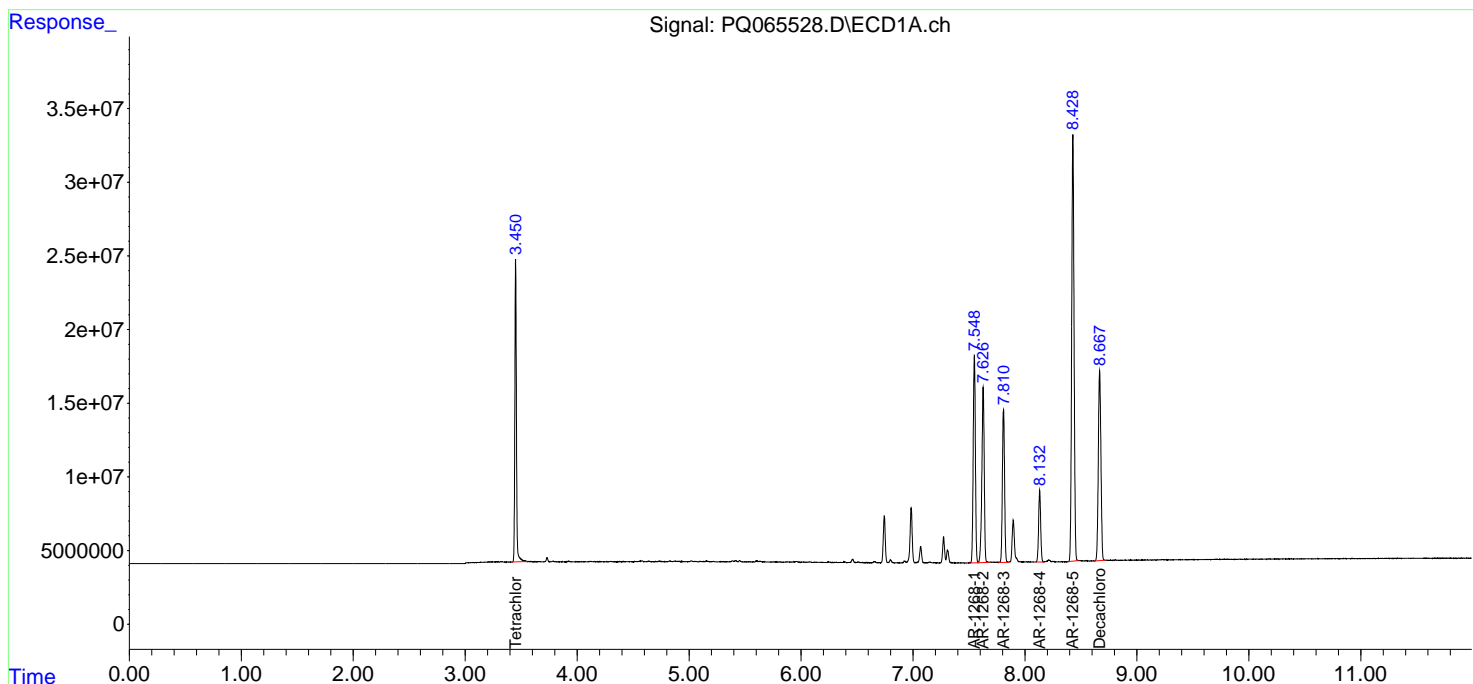
(f)=RT Delta > 1/2 Window (#)=Amounts differ by > 25% (m)=manual int.

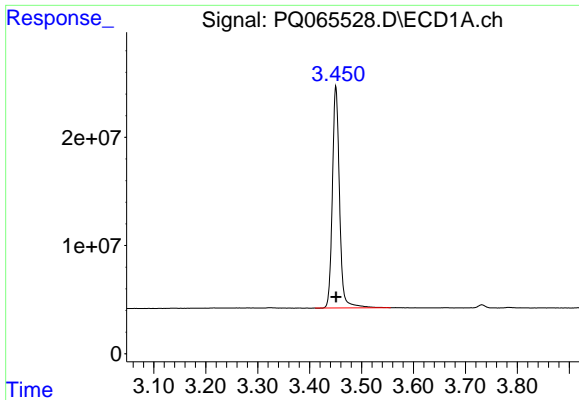
Data Path : Z:\pestpcbsrv\HPCHEM1\ECD_Q\Data\PQ022624\
 Data File : PQ065528.D
 Signal(s) : Signal #1: ECD1A.ch Signal #2: ECD2B.ch
 Acq On : 26 Feb 2024 21:16
 Operator : YP\AJ
 Sample : AR1268ICC500
 Misc :
 ALS Vial : 28 Sample Multiplier: 1

Instrument :
 ECD_Q
 ClientSampleId :
 AR1268ICC500

Integration File signal 1: autoint1.e
 Integration File signal 2: autoint2.e
 Quant Time: Feb 27 05:02:27 2024
 Quant Method : Z:\pestpcbsrv\HPCHEM1\ECD_Q\Method\PQ022624.M
 Quant Title : GC EXTRACTABLES
 QLast Update : Tue Feb 27 05:01:02 2024
 Response via : Initial Calibration
 Integrator: ChemStation

Volume Inj. : 2 µl
 Signal #1 Phase : ZB-MR1 Signal #2 Phase: ZB-MR2
 Signal #1 Info : 30Mx0.32mmx 0.50µ Signal #2 Info : 30M x 0.32mm x 0.25µm

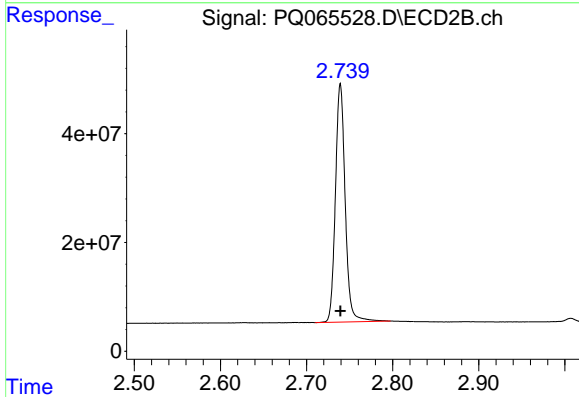




#1 Tetrachloro-m-xylene

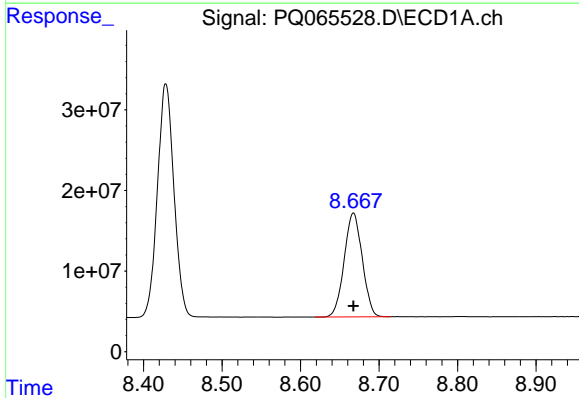
R.T.: 3.451 min
 Delta R.T.: 0.000 min
 Response: 196558451
 Conc: 50.00 ng/ml

Instrument :
 ECD_Q
 ClientSampleId :
 AR1268ICC500



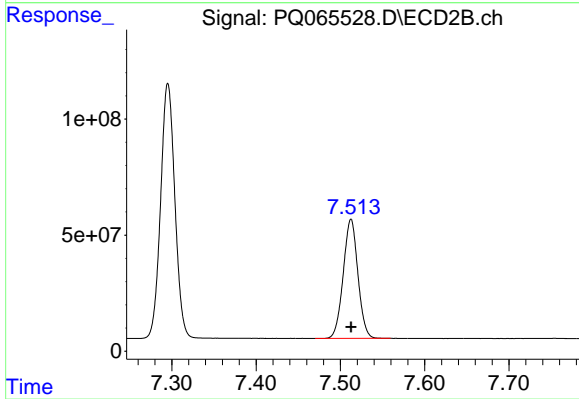
#1 Tetrachloro-m-xylene

R.T.: 2.739 min
 Delta R.T.: 0.000 min
 Response: 345641064
 Conc: 50.00 ng/ml



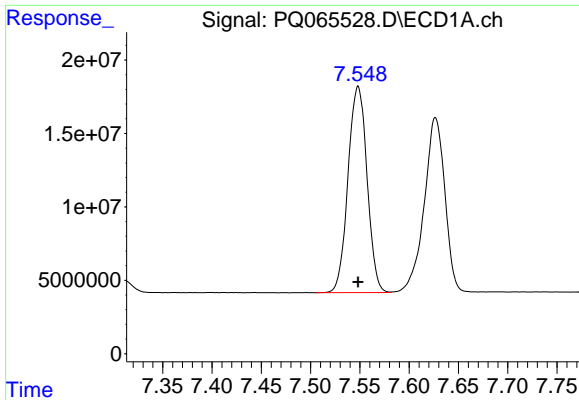
#2 Decachlorobiphenyl

R.T.: 8.667 min
 Delta R.T.: 0.000 min
 Response: 206039958
 Conc: 50.00 ng/ml



#2 Decachlorobiphenyl

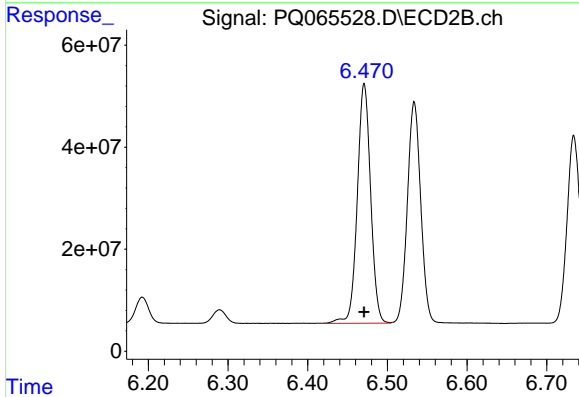
R.T.: 7.513 min
 Delta R.T.: 0.000 min
 Response: 620599564
 Conc: 50.00 ng/ml



#41 AR-1268-1

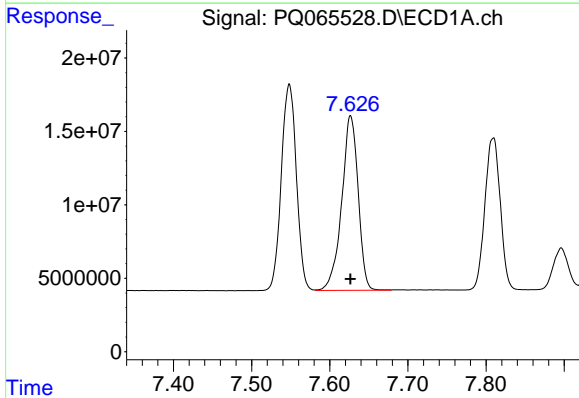
R.T.: 7.548 min
Delta R.T.: 0.000 min
Response: 188709432
Conc: 500.00 ng/ml

Instrument :
ECD_Q
ClientSampleId :
AR1268ICC500



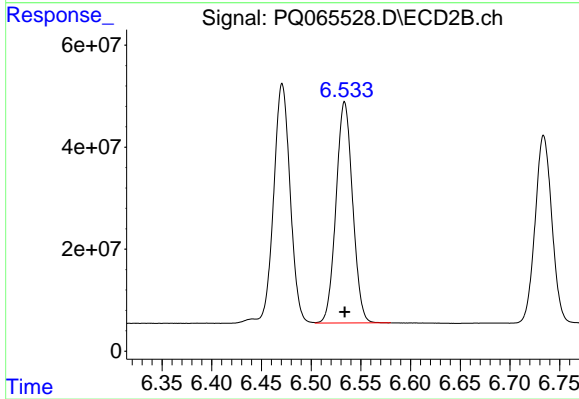
#41 AR-1268-1

R.T.: 6.471 min
Delta R.T.: 0.000 min
Response: 546109074
Conc: 500.00 ng/ml



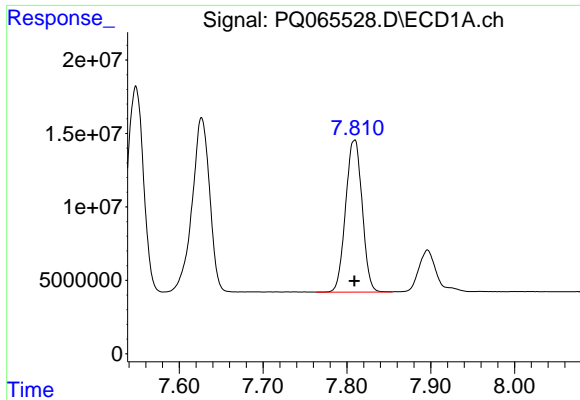
#42 AR-1268-2

R.T.: 7.627 min
Delta R.T.: 0.000 min
Response: 173540016
Conc: 500.00 ng/ml



#42 AR-1268-2

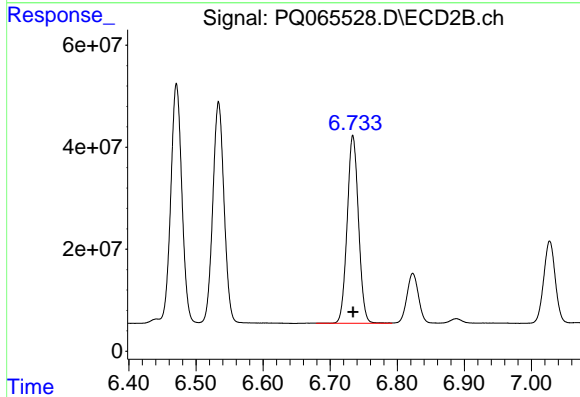
R.T.: 6.534 min
Delta R.T.: 0.000 min
Response: 503692681
Conc: 500.00 ng/ml



#43 AR-1268-3

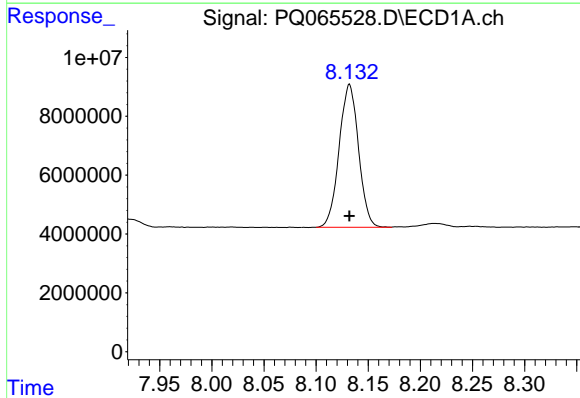
R.T.: 7.809 min
 Delta R.T.: 0.000 min
 Response: 142056124
 Conc: 500.00 ng/ml

Instrument :
 ECD_Q
 ClientSampleId :
 AR1268ICC500



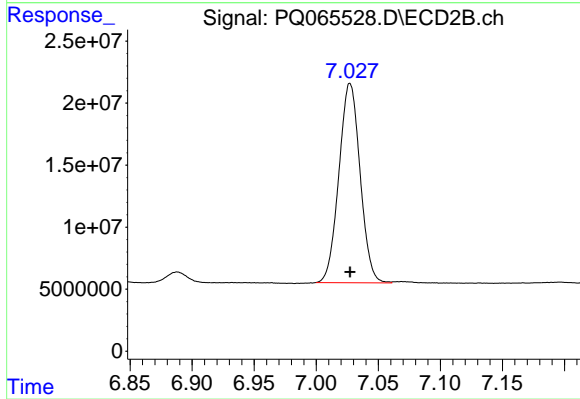
#43 AR-1268-3

R.T.: 6.734 min
 Delta R.T.: 0.000 min
 Response: 432459956
 Conc: 500.00 ng/ml



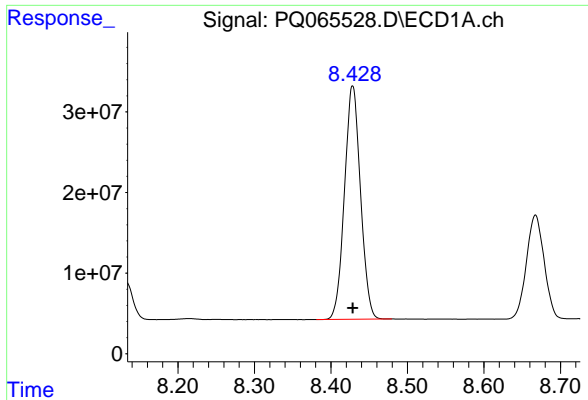
#44 AR-1268-4

R.T.: 8.132 min
 Delta R.T.: 0.000 min
 Response: 62857310
 Conc: 500.00 ng/ml



#44 AR-1268-4

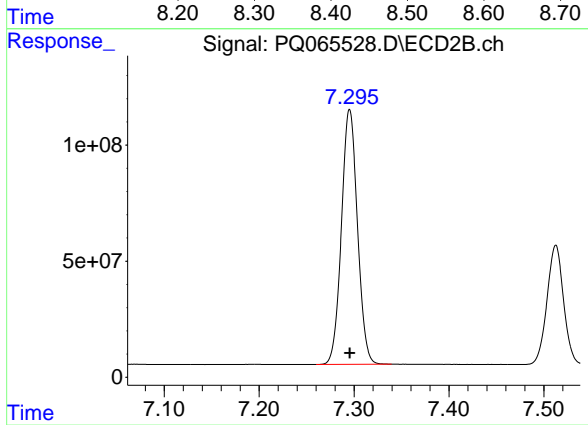
R.T.: 7.027 min
 Delta R.T.: 0.000 min
 Response: 190888963
 Conc: 500.00 ng/ml



#45 AR-1268-5

R.T.: 8.428 min
Delta R.T.: 0.000 min
Response: 423086923
Conc: 500.00 ng/ml

Instrument :
ECD_Q
ClientSampleId :
AR1268ICC500



#45 AR-1268-5

R.T.: 7.295 min
Delta R.T.: 0.000 min
Response: 1287411325
Conc: 500.00 ng/ml