

Data Path : Z:\pestpcbsrv\HPCHEM1\ECD_Q\Data\PQ022719\
 Data File : PQ037598.D
 Signal(s) : Signal #1: ECD1A.ch Signal #2: ECD2B.ch
 Acq On : 26 Feb 2019 20:22
 Operator : SM\SJ
 Sample : K1620-04
 Misc :
 ALS Vial : 17 Sample Multiplier: 1

Instrument :
 ECD_Q
 ClientSampleId :
 SB-02

Integration File signal 1: autoint1.e
 Integration File signal 2: autoint2.e
 Quant Time: Feb 27 08:32:48 2019
 Quant Method : Z:\pestpcbsrv\HPCHEM1\ECD_Q\Method\PQ022219.M
 Quant Title : GC EXTRACTABLES
 QLast Update : Sat Feb 23 04:01:25 2019
 Response via : Initial Calibration
 Integrator: ChemStation

Volume Inj. : 2 µl
 Signal #1 Phase : ZB-MR1 Signal #2 Phase: ZB-MR2
 Signal #1 Info : 30Mx0.32mmx 0.50µ Signal #2 Info : 30M x 0.32mm x 0.25µm

Compound	RT#1	RT#2	Resp#1	Resp#2	ng/ml	ng/ml

System Monitoring Compounds						
1) SA Tetrachlo...	4.227	3.656	117.4E6	63107533	18.736	18.888
2) SA Decachlor...	9.691	8.546	72693299	32051496	14.082	13.897

Target Compounds

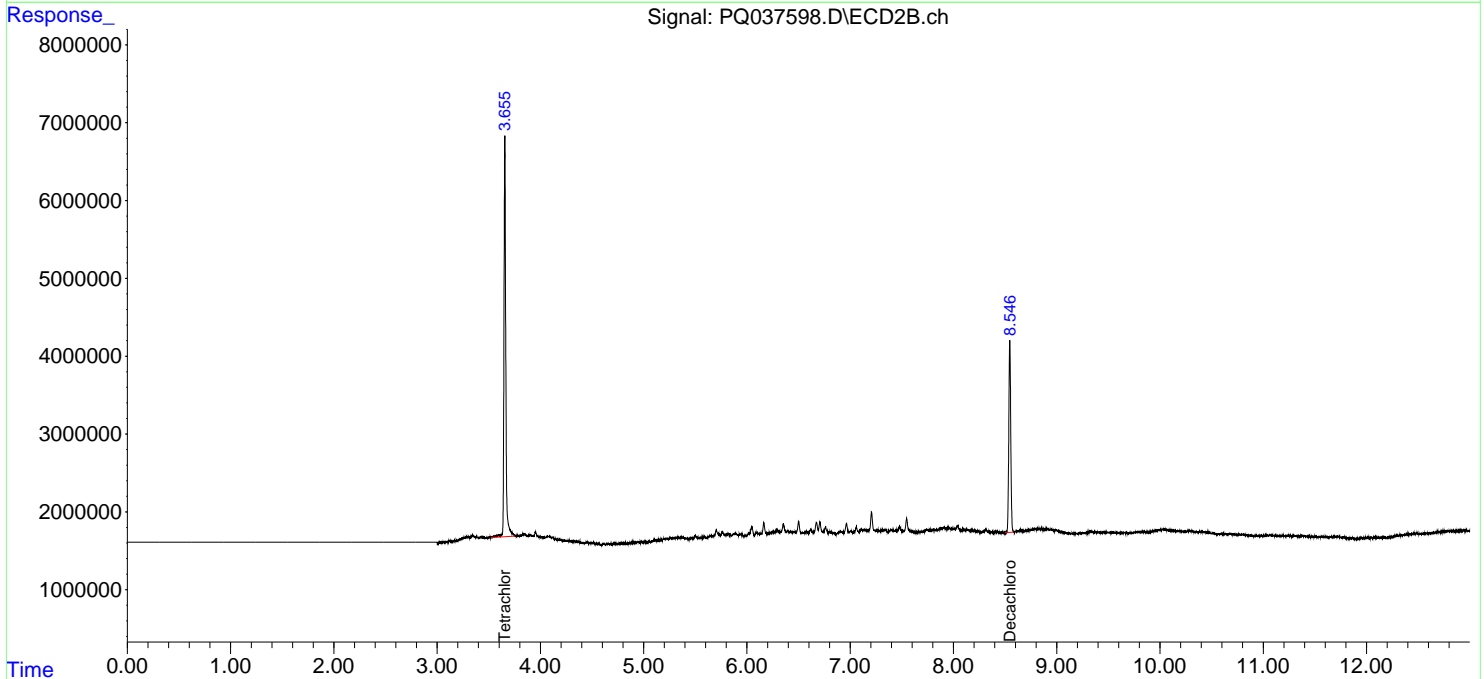
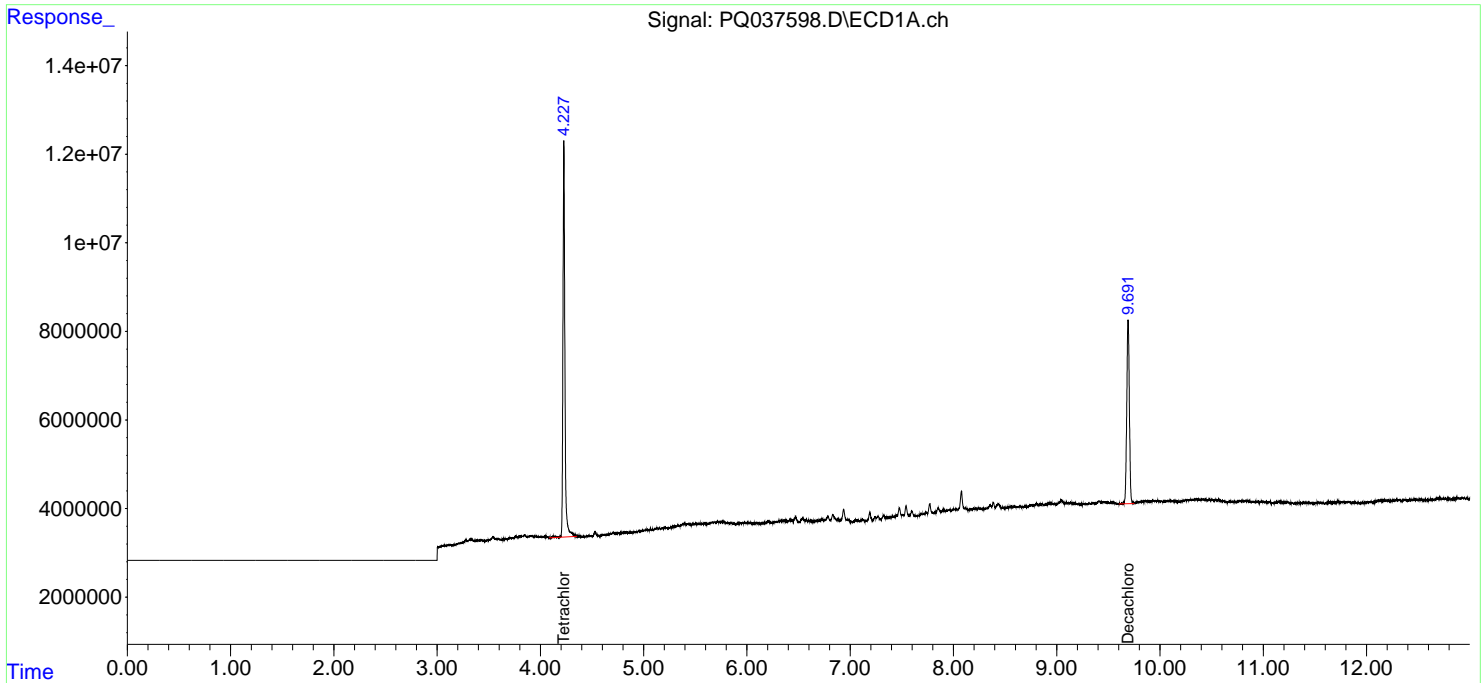
(f)=RT Delta > 1/2 Window (#)=Amounts differ by > 25% (m)=manual int.

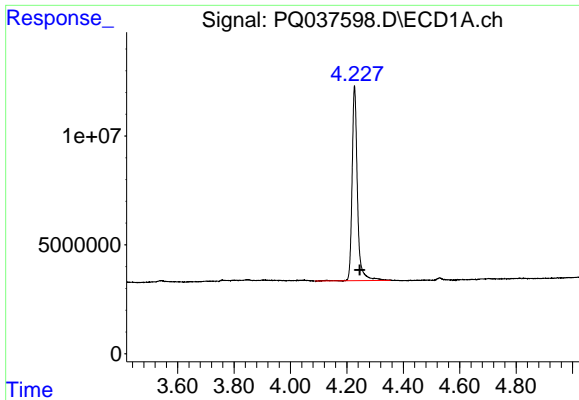
Data Path : Z:\pestpcbsrv\HPCHEM1\ECD_Q\Data\PQ022719\
 Data File : PQ037598.D
 Signal(s) : Signal #1: ECD1A.ch Signal #2: ECD2B.ch
 Acq On : 26 Feb 2019 20:22
 Operator : SM\SJ
 Sample : K1620-04
 Misc :
 ALS Vial : 17 Sample Multiplier: 1

Instrument :
 ECD_Q
 ClientSampled :
 SB-02

Integration File signal 1: autoint1.e
 Integration File signal 2: autoint2.e
 Quant Time: Feb 27 08:32:48 2019
 Quant Method : Z:\pestpcbsrv\HPCHEM1\ECD_Q\Method\PQ022219.M
 Quant Title : GC EXTRACTABLES
 QLast Update : Sat Feb 23 04:01:25 2019
 Response via : Initial Calibration
 Integrator: ChemStation

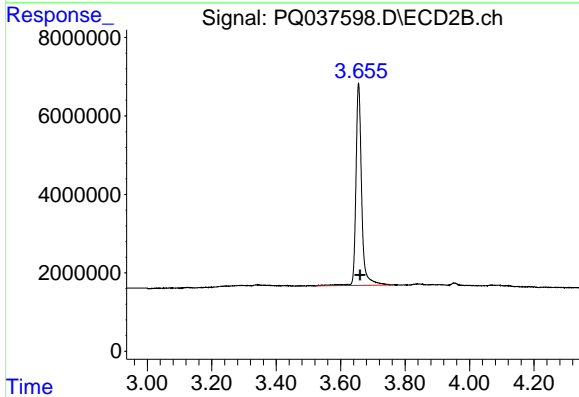
Volume Inj. : 2 µl
 Signal #1 Phase : ZB-MR1 Signal #2 Phase: ZB-MR2
 Signal #1 Info : 30Mx0.32mmx 0.50µm Signal #2 Info : 30M x 0.32mm x 0.25µm



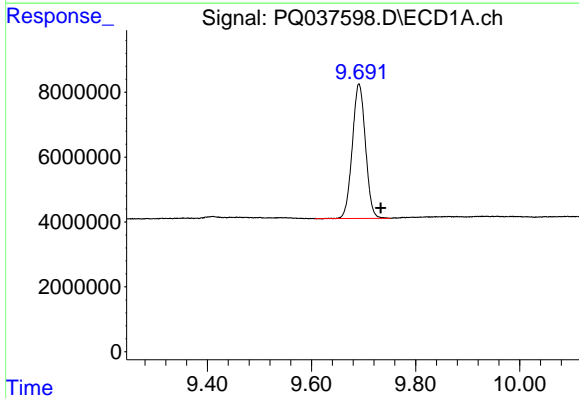


#1 Tetrachloro-m-xylene
 R.T.: 4.227 min
 Delta R.T.: -0.019 min
 Response: 117385020
 Conc: 18.74 ng/ml

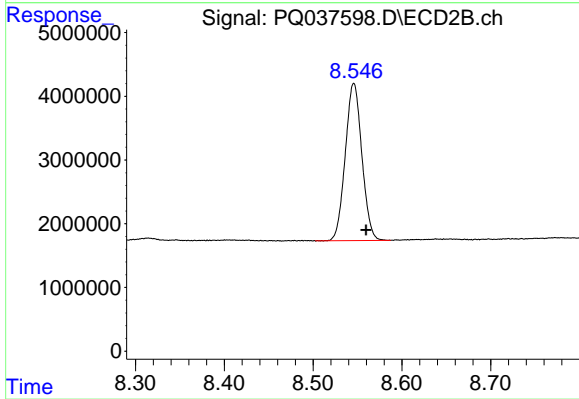
Instrument :
 ECD_Q
 ClientSampleId :
 SB-02



#1 Tetrachloro-m-xylene
 R.T.: 3.656 min
 Delta R.T.: -0.005 min
 Response: 63107533
 Conc: 18.89 ng/ml



#2 Decachlorobiphenyl
 R.T.: 9.691 min
 Delta R.T.: -0.042 min
 Response: 72693299
 Conc: 14.08 ng/ml



#2 Decachlorobiphenyl
 R.T.: 8.546 min
 Delta R.T.: -0.014 min
 Response: 32051496
 Conc: 13.90 ng/ml