

Data Path : Z:\pestpcbsrv\HPCHEM1\ECD_Q\Data\PQ022723\
 Data File : PQ060538.D
 Signal(s) : Signal #1: ECD1A.ch Signal #2: ECD2B.ch
 Acq On : 27 Feb 2023 21:58
 Operator : YP\AJ
 Sample : 01627-07
 Misc : AR1262 LOD 40 PPB
 ALS Vial : 41 Sample Multiplier: 1

Integration File signal 1: autoint1.e
 Integration File signal 2: autoint2.e
 Quant Time: Feb 27 23:40:07 2023
 Quant Method : Z:\pestpcbsrv\HPCHEM1\ECD_Q\Method\PQ022423.M
 Quant Title : GC EXTRACTABLES
 QLast Update : Fri Feb 24 16:56:07 2023
 Response via : Initial Calibration
 Integrator: ChemStation

Volume Inj. : 2 µl
 Signal #1 Phase : ZB-MR1 Signal #2 Phase: ZB-MR2
 Signal #1 Info : 30Mx0.32mmx 0.50µ Signal #2 Info : 30M x 0.32mm x 0.25µm

Compound	RT#1	RT#2	Resp#1	Resp#2	ng/ml	ng/ml

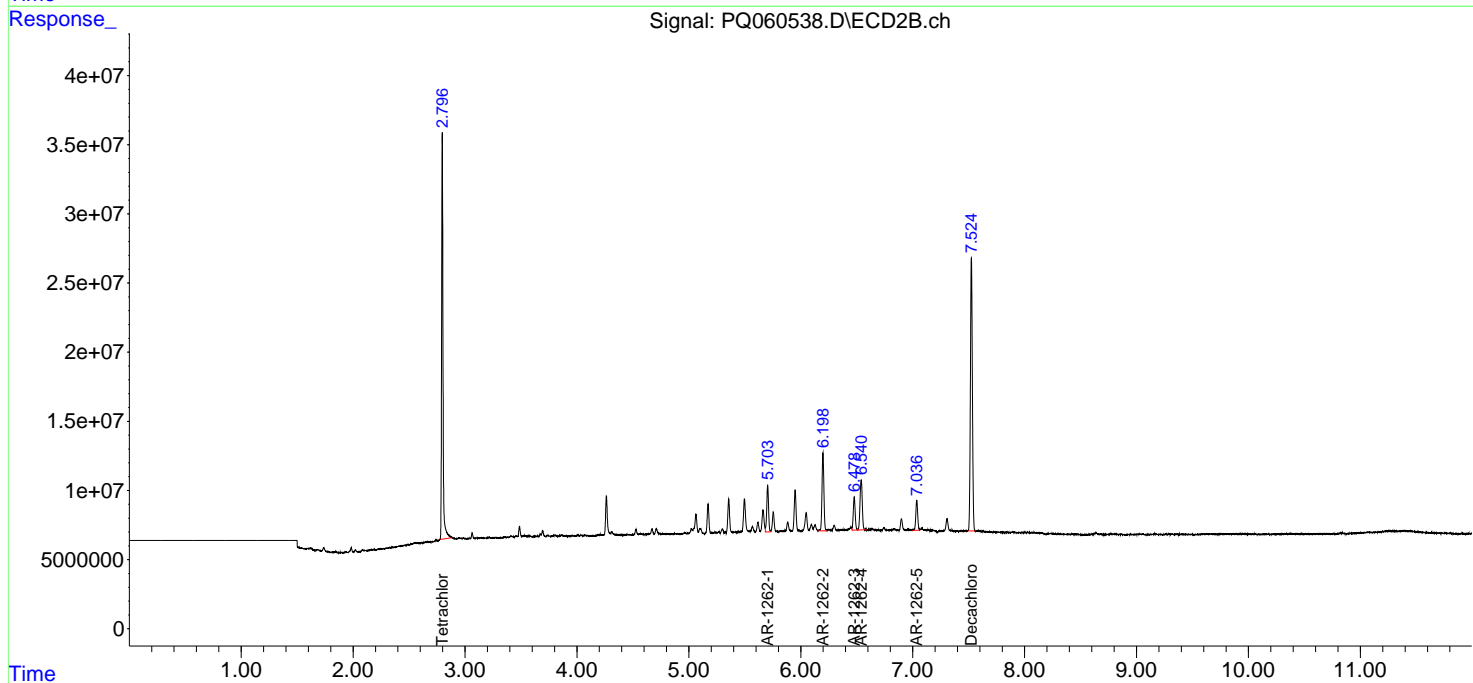
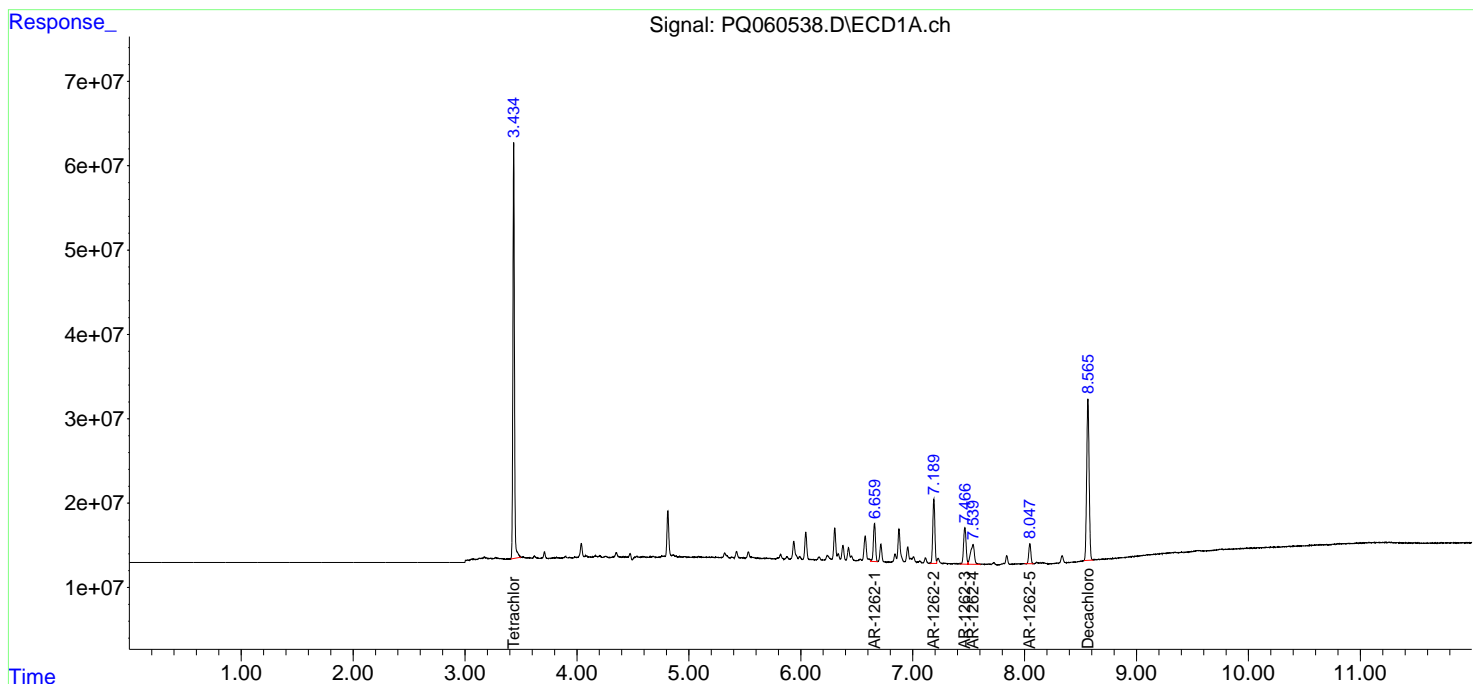
System Monitoring Compounds						
1) SA Tetrachlo...	3.435	2.797	480.0E6	253.3E6	20.860	22.519
2) SA Decachlor...	8.566	7.525	290.8E6	242.4E6	21.450	22.584
Target Compounds						
36) L8 AR-1262-1	6.659	5.704	59897629	37596399	52.102	48.083
37) L8 AR-1262-2	7.189	6.198	99013298	66010778	49.373	46.519
38) L8 AR-1262-3	7.466	6.478	66693113	28491355	50.954	50.186
39) L8 AR-1262-4	7.540	6.540	55603635	50344292	54.384	47.125
40) L8 AR-1262-5	8.047	7.037	30814516	25679556	47.379	49.592

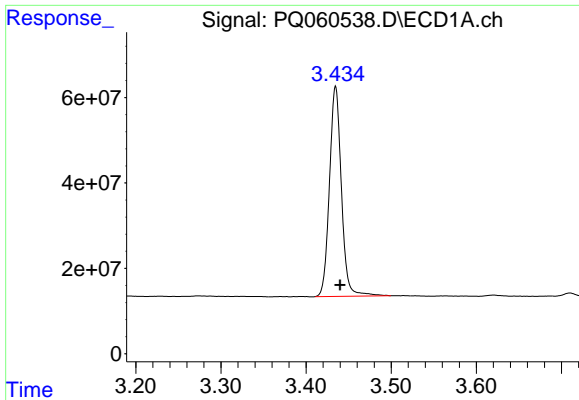
(f)=RT Delta > 1/2 Window (#)=Amounts differ by > 25% (m)=manual int.

Data Path : Z:\pestpcbsrv\HPCHEM1\ECD_Q\Data\PQ022723\
 Data File : PQ060538.D
 Signal(s) : Signal #1: ECD1A.ch Signal #2: ECD2B.ch
 Acq On : 27 Feb 2023 21:58
 Operator : YP\AJ
 Sample : 01627-07
 Misc : AR1262 LOD 40 PPB
 ALS Vial : 41 Sample Multiplier: 1

Integration File signal 1: autoint1.e
 Integration File signal 2: autoint2.e
 Quant Time: Feb 27 23:40:07 2023
 Quant Method : Z:\pestpcbsrv\HPCHEM1\ECD_Q\Method\PQ022423.M
 Quant Title : GC EXTRACTABLES
 QLast Update : Fri Feb 24 16:56:07 2023
 Response via : Initial Calibration
 Integrator: ChemStation

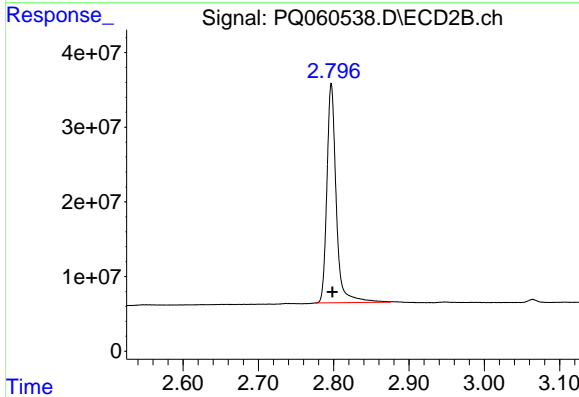
Volume Inj. : 2 µl
 Signal #1 Phase : ZB-MR1 Signal #2 Phase: ZB-MR2
 Signal #1 Info : 30Mx0.32mmx 0.50µ Signal #2 Info : 30M x 0.32mm x 0.25µm





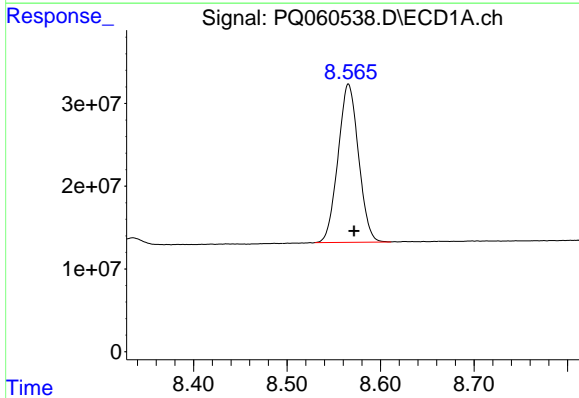
#1 Tetrachloro-m-xylene

R.T.: 3.435 min
Delta R.T.: -0.005 min
Response: 479992781
Conc: 20.86 ng/ml



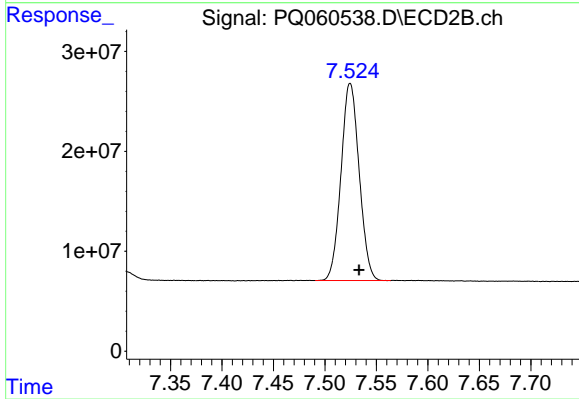
#1 Tetrachloro-m-xylene

R.T.: 2.797 min
Delta R.T.: -0.001 min
Response: 253334758
Conc: 22.52 ng/ml



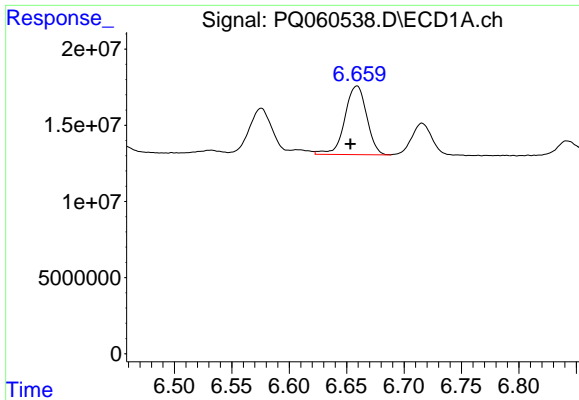
#2 Decachlorobiphenyl

R.T.: 8.566 min
Delta R.T.: -0.006 min
Response: 290840292
Conc: 21.45 ng/ml



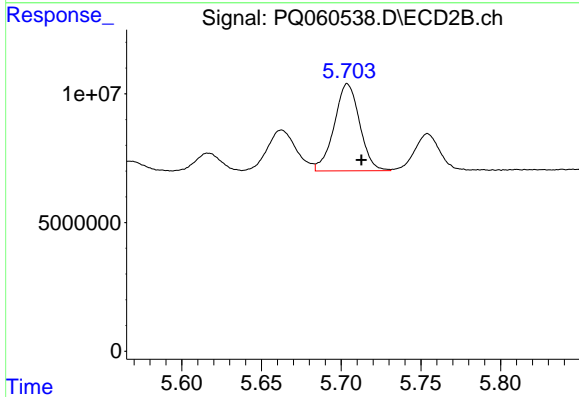
#2 Decachlorobiphenyl

R.T.: 7.525 min
Delta R.T.: -0.009 min
Response: 242381901
Conc: 22.58 ng/ml



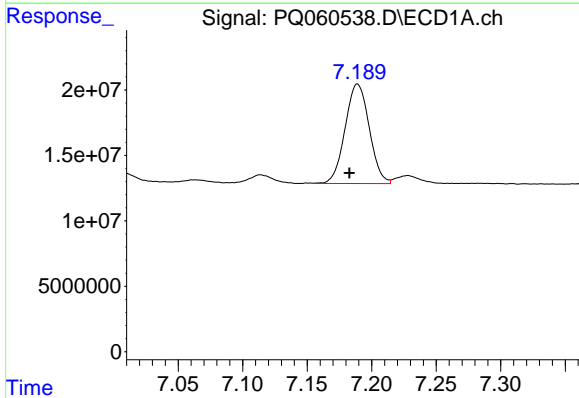
#36 AR-1262-1

R.T.: 6.659 min
Delta R.T.: 0.006 min
Response: 59897629
Conc: 52.10 ng/ml



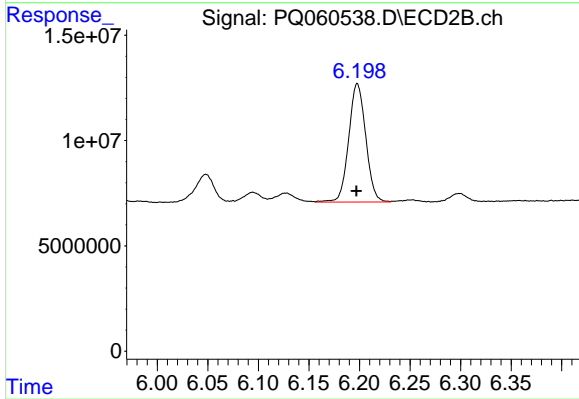
#36 AR-1262-1

R.T.: 5.704 min
Delta R.T.: -0.009 min
Response: 37596399
Conc: 48.08 ng/ml



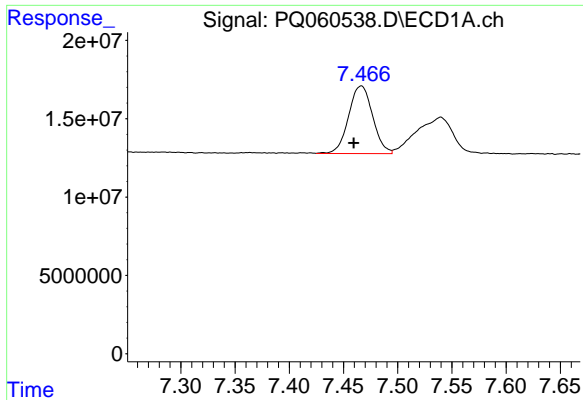
#37 AR-1262-2

R.T.: 7.189 min
Delta R.T.: 0.006 min
Response: 99013298
Conc: 49.37 ng/ml



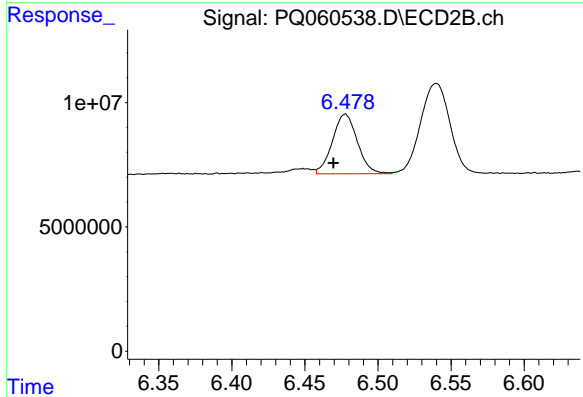
#37 AR-1262-2

R.T.: 6.198 min
Delta R.T.: 0.000 min
Response: 66010778
Conc: 46.52 ng/ml



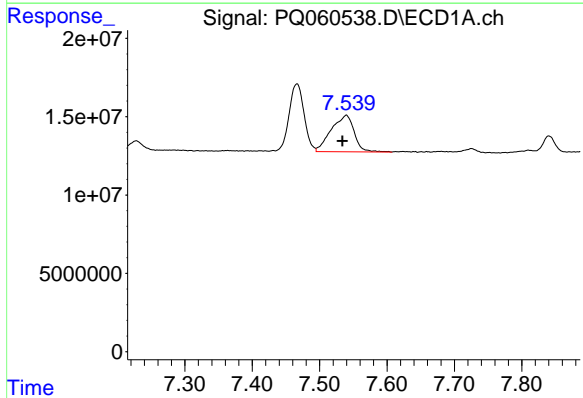
#38 AR-1262-3

R.T.: 7.466 min
Delta R.T.: 0.007 min
Response: 66693113
Conc: 50.95 ng/ml



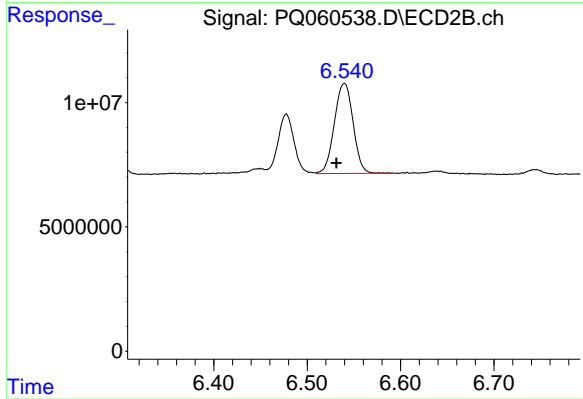
#38 AR-1262-3

R.T.: 6.478 min
Delta R.T.: 0.008 min
Response: 28491355
Conc: 50.19 ng/ml



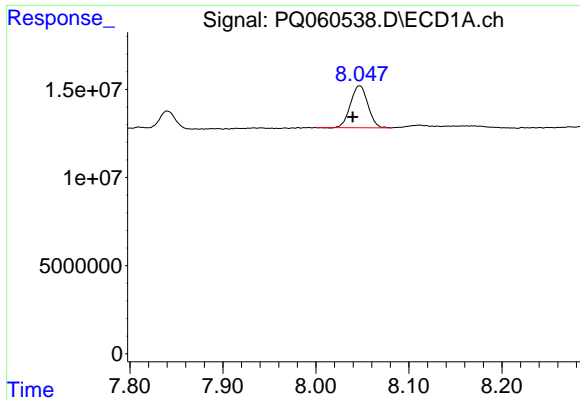
#39 AR-1262-4

R.T.: 7.540 min
Delta R.T.: 0.006 min
Response: 55603635
Conc: 54.38 ng/ml



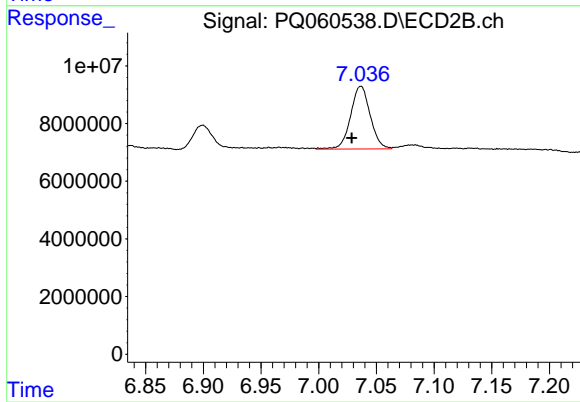
#39 AR-1262-4

R.T.: 6.540 min
Delta R.T.: 0.009 min
Response: 50344292
Conc: 47.13 ng/ml



#40 AR-1262-5

R.T.: 8.047 min
Delta R.T.: 0.007 min
Response: 30814516
Conc: 47.38 ng/ml



#40 AR-1262-5

R.T.: 7.037 min
Delta R.T.: 0.008 min
Response: 25679556
Conc: 49.59 ng/ml