

Data Path : Z:\pestpcbsrv\HPCHEM1\ECD_Q\Data\PQ030922\
 Data File : PQ056415.D
 Signal(s) : Signal #1: ECD1A.ch Signal #2: ECD2B.ch
 Acq On : 09 Mar 2022 20:59
 Operator : YP\AJ
 Sample : AR1660CCC500
 Misc :
 ALS Vial : 3 Sample Multiplier: 1

Instrument :
 ECD_Q
 ClientSampleId :
 AR1660CCC500

Integration File signal 1: autoint1.e
 Integration File signal 2: autoint2.e
 Quant Time: Mar 10 02:47:18 2022
 Quant Method : Z:\pestpcbsrv\HPCHEM1\ECD_Q\Method\PQ030822.M
 Quant Title : GC EXTRACTABLES
 QLast Update : Wed Mar 09 03:41:18 2022
 Response via : Initial Calibration
 Integrator: ChemStation

Volume Inj. : 2 µl
 Signal #1 Phase : ZB-MR1 Signal #2 Phase: ZB-MR2
 Signal #1 Info : 30Mx0.32mmx 0.50µ Signal #2 Info : 30M x 0.32mm x 0.25µm

Compound	RT#1	RT#2	Resp#1	Resp#2	ng/ml	ng/ml

System Monitoring Compounds						
1) SA Tetrachlo...	4.677	3.845	670.9E6	644.5E6	51.153	51.341
2) SA Decachlor...	10.585	8.838	779.6E6	458.2E6	49.082	48.158
Target Compounds						
3) L1 AR-1016-1	5.865	4.925	152.5E6	159.9E6	458.603	459.465
4) L1 AR-1016-2	5.888	4.943	336.3E6	330.9E6	500.912	491.118
5) L1 AR-1016-3	5.950	5.119	232.5E6	143.8E6	543.399	489.932
6) L1 AR-1016-4	6.051	5.154	184.7E6	136.9E6	520.894	531.615
7) L1 AR-1016-5	6.339	5.367	149.1E6	153.1E6	520.180	499.620
31) L7 AR-1260-1	7.466	6.390	247.5E6	310.6E6	519.427	498.542
32) L7 AR-1260-2	7.722	6.577	314.3E6	366.1E6	511.598	502.938
33) L7 AR-1260-3	8.081	6.729	257.2E6	345.3E6	519.077	513.787
34) L7 AR-1260-4	8.322	7.196	292.9E6	254.0E6	507.663	496.869
35) L7 AR-1260-5	8.663	7.437	669.1E6	586.5E6	501.284	502.056

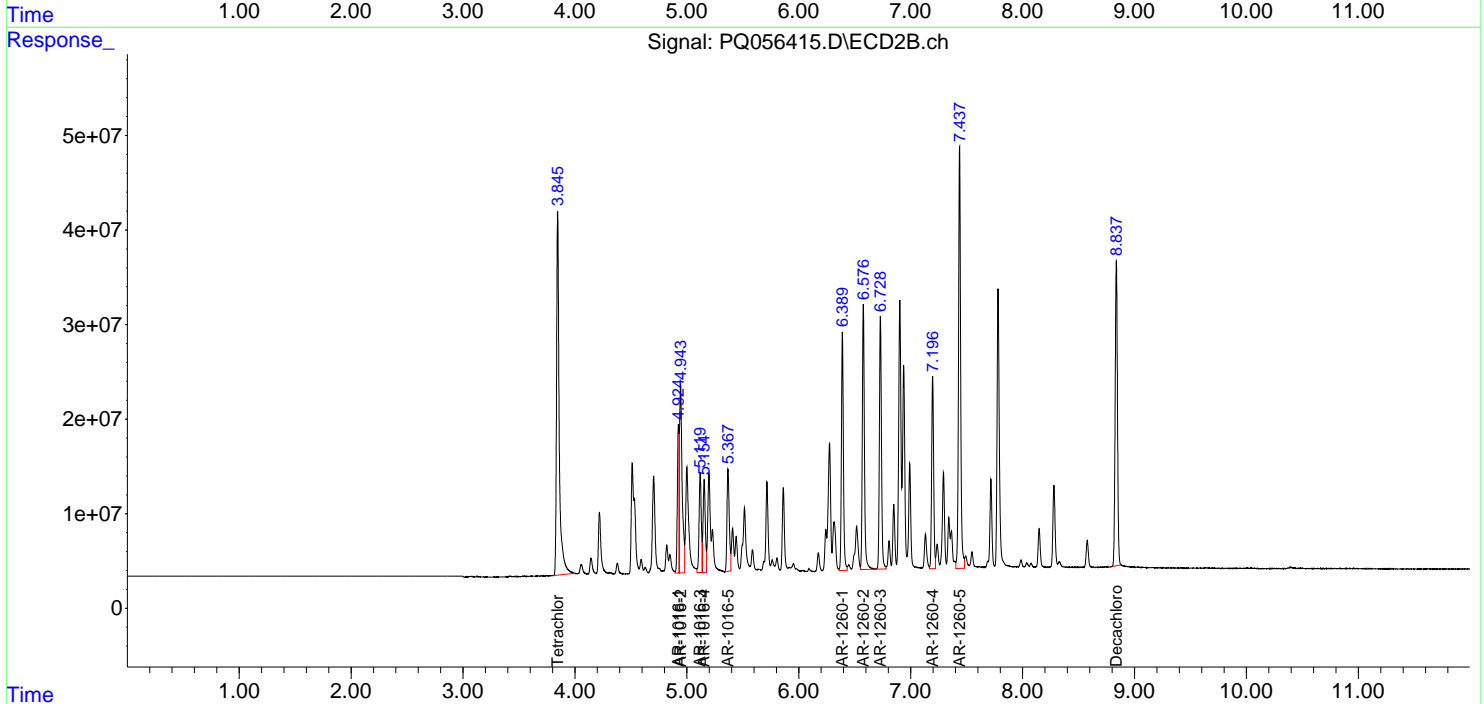
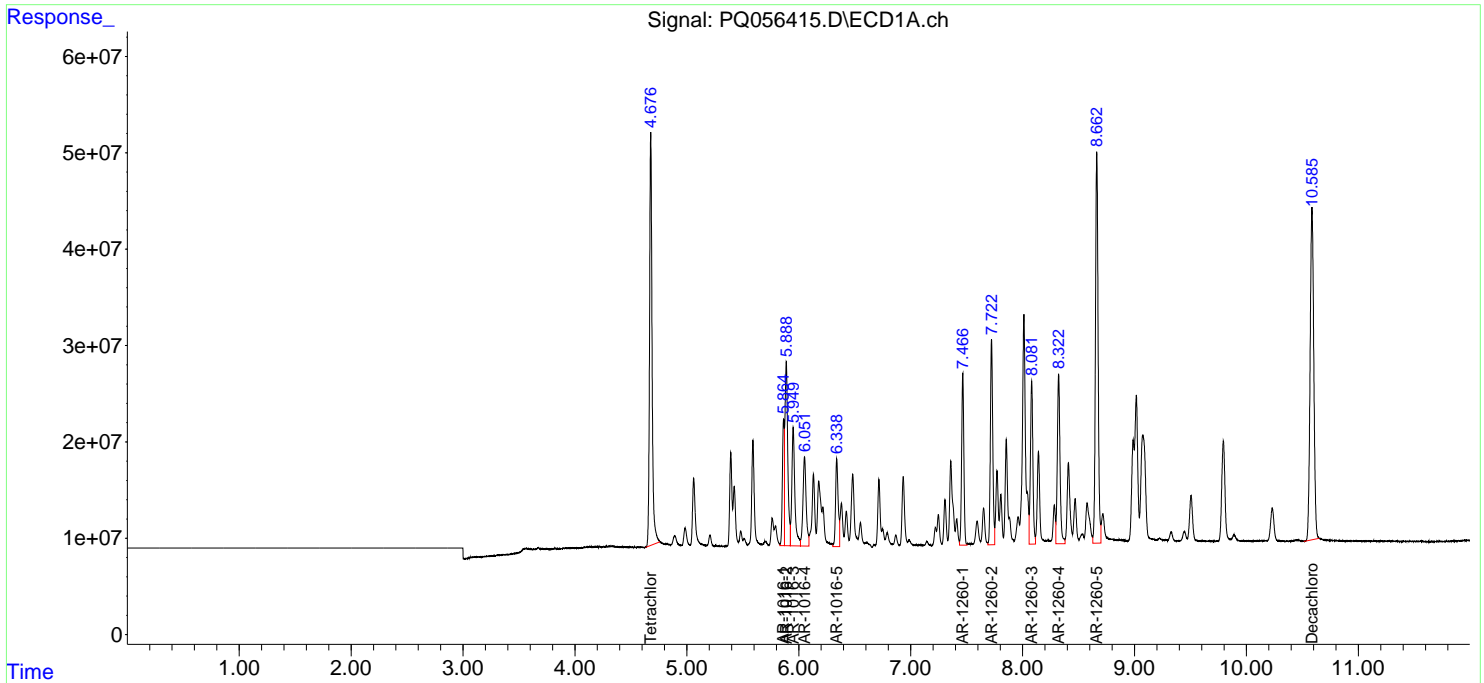
(f)=RT Delta > 1/2 Window (#)=Amounts differ by > 25% (m)=manual int.

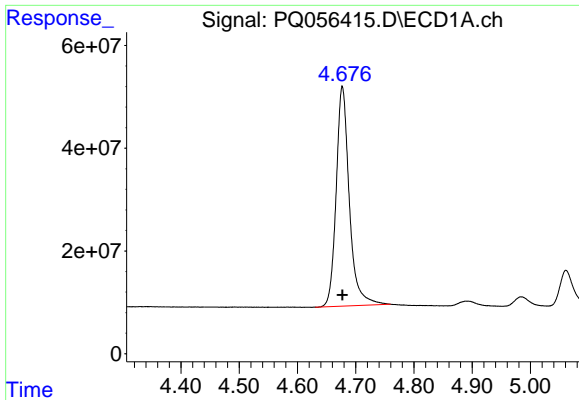
Data Path : Z:\pestpcbsrv\HPCHEM1\ECD_Q\Data\PQ030922\
 Data File : PQ056415.D
 Signal(s) : Signal #1: ECD1A.ch Signal #2: ECD2B.ch
 Acq On : 09 Mar 2022 20:59
 Operator : YP\AJ
 Sample : AR1660CCC500
 Misc :
 ALS Vial : 3 Sample Multiplier: 1

Instrument :
 ECD_Q
 ClientSampleId :
 AR1660CCC500

Integration File signal 1: autoint1.e
 Integration File signal 2: autoint2.e
 Quant Time: Mar 10 02:47:18 2022
 Quant Method : Z:\pestpcbsrv\HPCHEM1\ECD_Q\Method\PQ030822.M
 Quant Title : GC EXTRACTABLES
 QLast Update : Wed Mar 09 03:41:18 2022
 Response via : Initial Calibration
 Integrator: ChemStation

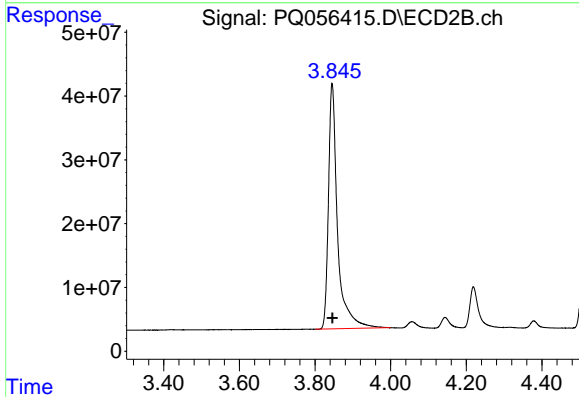
Volume Inj. : 2 µl
 Signal #1 Phase : ZB-MR1 Signal #2 Phase: ZB-MR2
 Signal #1 Info : 30Mx0.32mmx 0.50µ Signal #2 Info : 30M x 0.32mm x 0.25µm



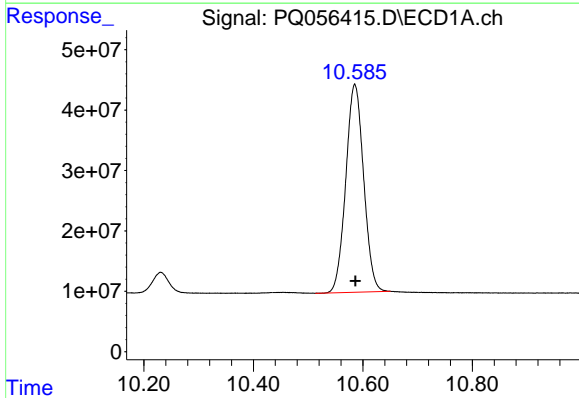


#1 Tetrachloro-m-xylene
 R.T.: 4.677 min
 Delta R.T.: 0.000 min
 Response: 670911592
 Conc: 51.15 ng/ml

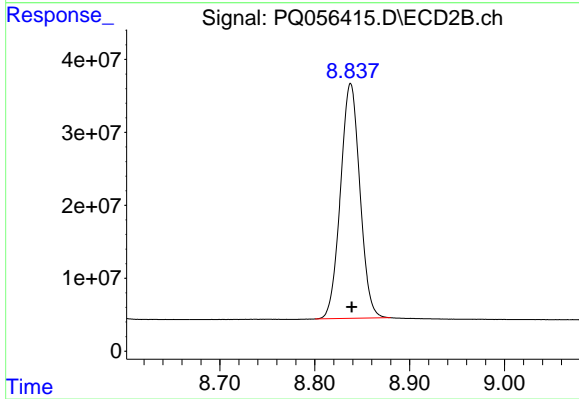
Instrument :
 ECD_Q
 ClientSampleId :
 AR1660CCC500



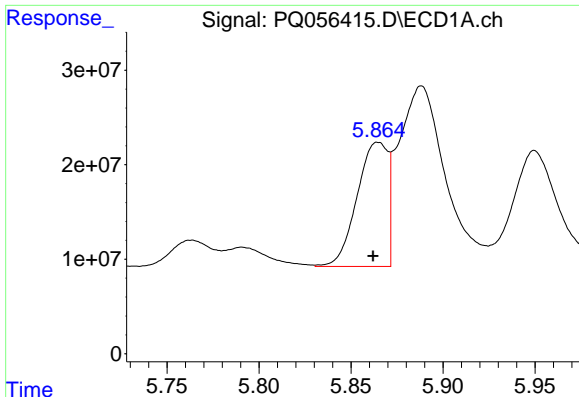
#1 Tetrachloro-m-xylene
 R.T.: 3.845 min
 Delta R.T.: 0.000 min
 Response: 644515130
 Conc: 51.34 ng/ml



#2 Decachlorobiphenyl
 R.T.: 10.585 min
 Delta R.T.: -0.001 min
 Response: 779594677
 Conc: 49.08 ng/ml



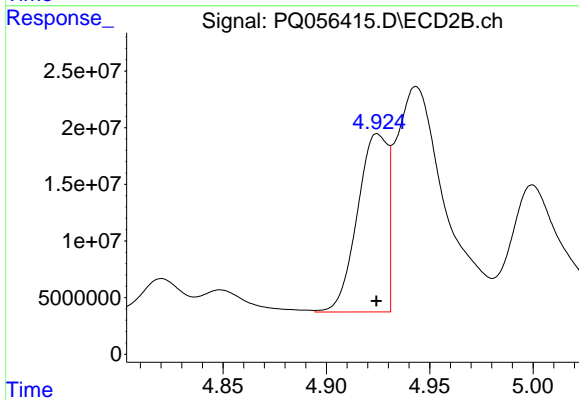
#2 Decachlorobiphenyl
 R.T.: 8.838 min
 Delta R.T.: -0.001 min
 Response: 458217841
 Conc: 48.16 ng/ml



#3 AR-1016-1

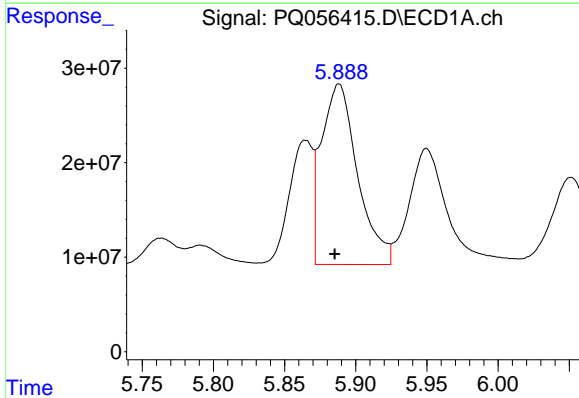
R.T.: 5.865 min
 Delta R.T.: 0.003 min
 Response: 152481823
 Conc: 458.60 ng/ml

Instrument :
 ECD_Q
 ClientSampleId :
 AR1660CCC500



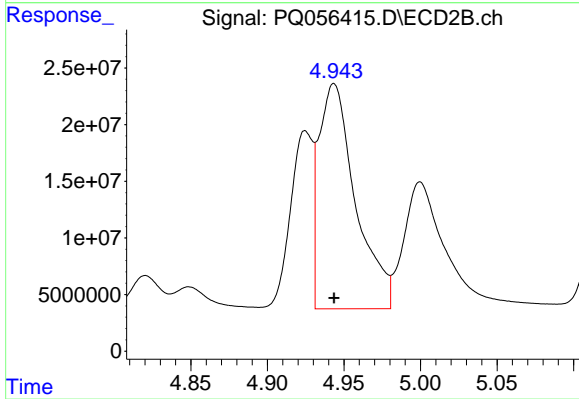
#3 AR-1016-1

R.T.: 4.925 min
 Delta R.T.: 0.000 min
 Response: 159915215
 Conc: 459.46 ng/ml



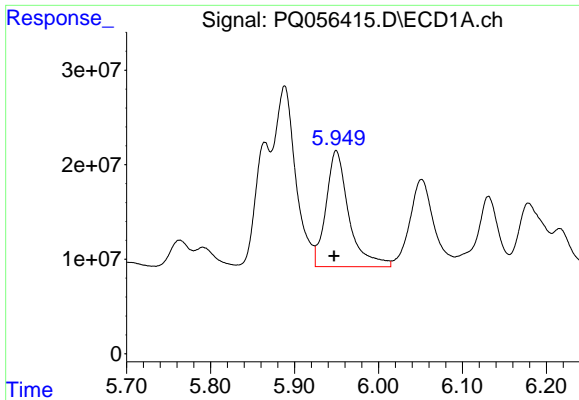
#4 AR-1016-2

R.T.: 5.888 min
 Delta R.T.: 0.003 min
 Response: 336295098
 Conc: 500.91 ng/ml



#4 AR-1016-2

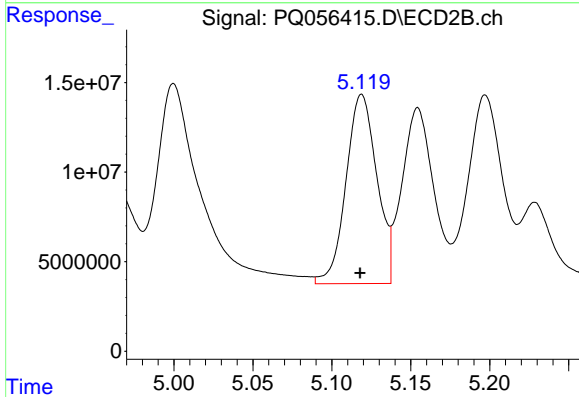
R.T.: 4.943 min
 Delta R.T.: 0.000 min
 Response: 330856047
 Conc: 491.12 ng/ml



#5 AR-1016-3

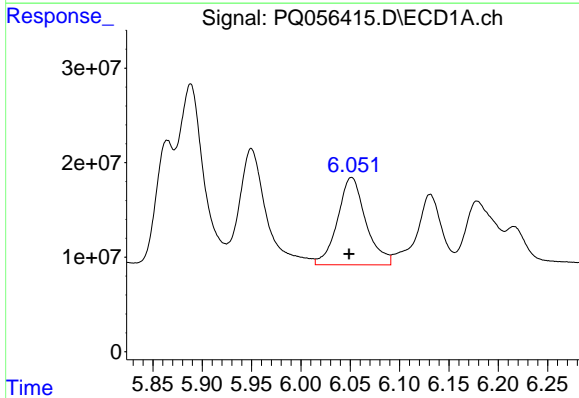
R.T.: 5.950 min
 Delta R.T.: 0.002 min
 Response: 232525841
 Conc: 543.40 ng/ml

Instrument :
 ECD_Q
 ClientSampleId :
 AR1660CCC500



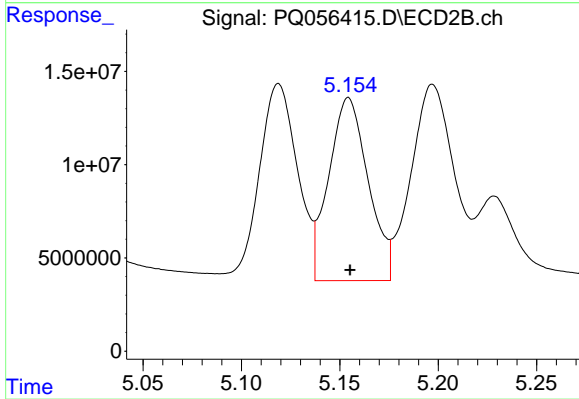
#5 AR-1016-3

R.T.: 5.119 min
 Delta R.T.: 0.000 min
 Response: 143803294
 Conc: 489.93 ng/ml



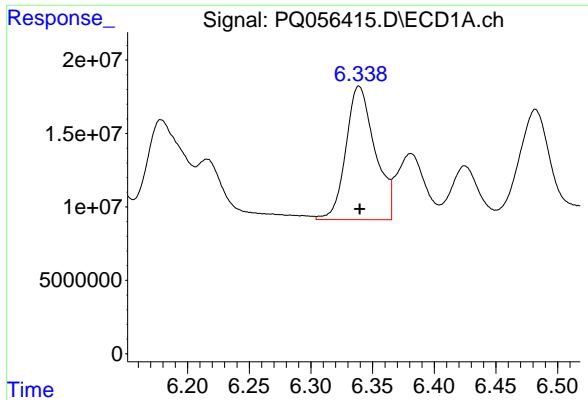
#6 AR-1016-4

R.T.: 6.051 min
 Delta R.T.: 0.003 min
 Response: 184666268
 Conc: 520.89 ng/ml



#6 AR-1016-4

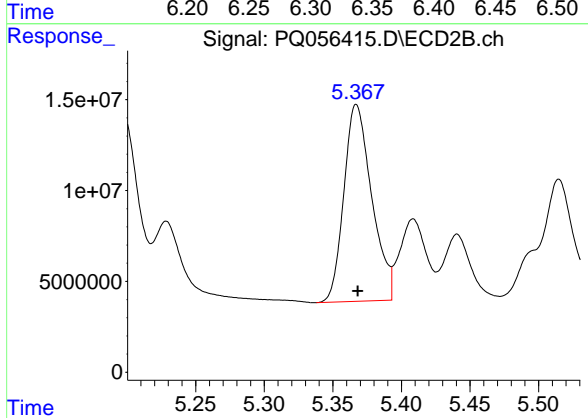
R.T.: 5.154 min
 Delta R.T.: 0.000 min
 Response: 136871348
 Conc: 531.61 ng/ml



#7 AR-1016-5

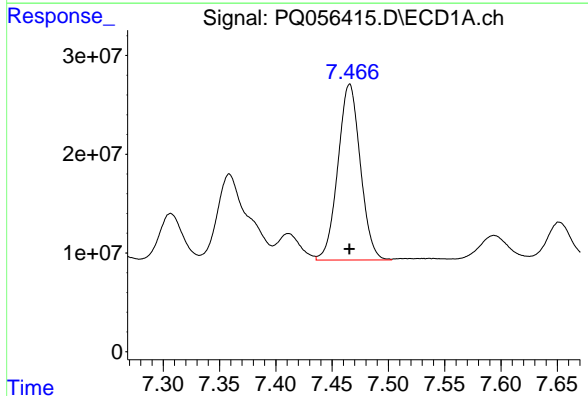
R.T.: 6.339 min
 Delta R.T.: 0.000 min
 Response: 149078822
 Conc: 520.18 ng/ml

Instrument :
 ECD_Q
 ClientSampleId :
 AR1660CCC500



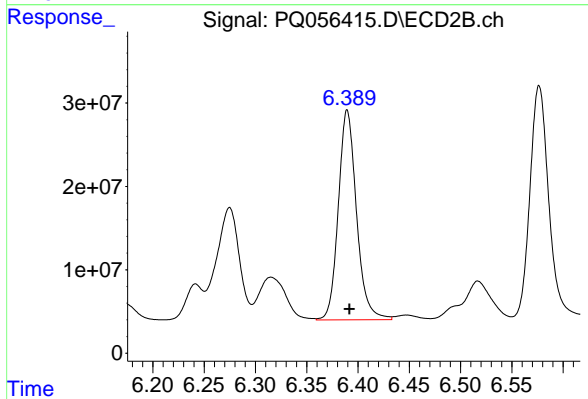
#7 AR-1016-5

R.T.: 5.367 min
 Delta R.T.: -0.001 min
 Response: 153077793
 Conc: 499.62 ng/ml



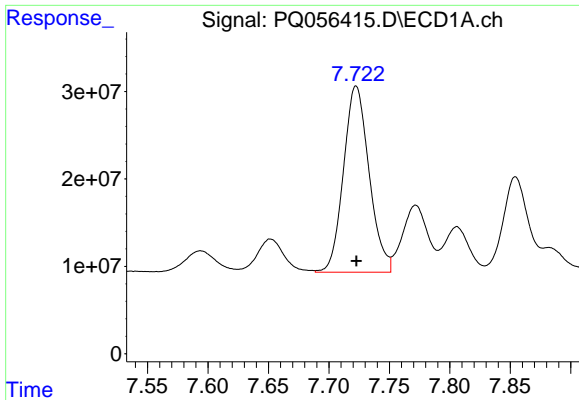
#31 AR-1260-1

R.T.: 7.466 min
 Delta R.T.: 0.000 min
 Response: 247459172
 Conc: 519.43 ng/ml



#31 AR-1260-1

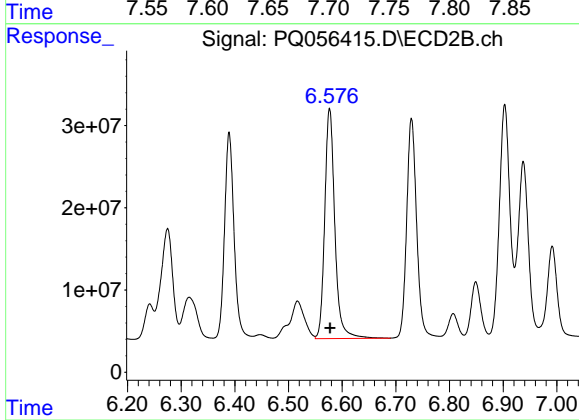
R.T.: 6.390 min
 Delta R.T.: -0.002 min
 Response: 310603138
 Conc: 498.54 ng/ml



#32 AR-1260-2

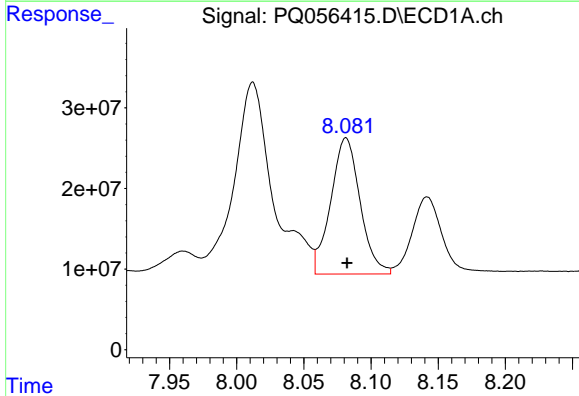
R.T.: 7.722 min
 Delta R.T.: 0.000 min
 Response: 314345480
 Conc: 511.60 ng/ml

Instrument :
 ECD_Q
 ClientSampleId :
 AR1660CCC500



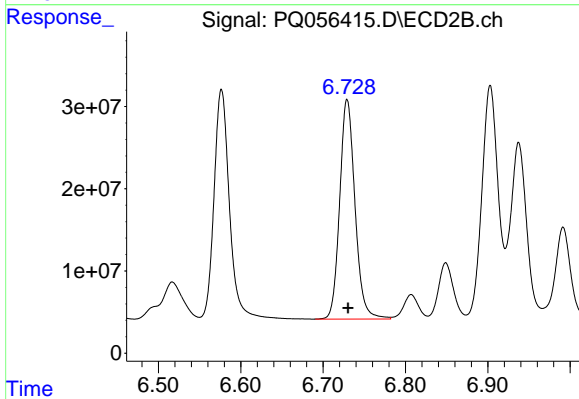
#32 AR-1260-2

R.T.: 6.577 min
 Delta R.T.: -0.001 min
 Response: 366108163
 Conc: 502.94 ng/ml



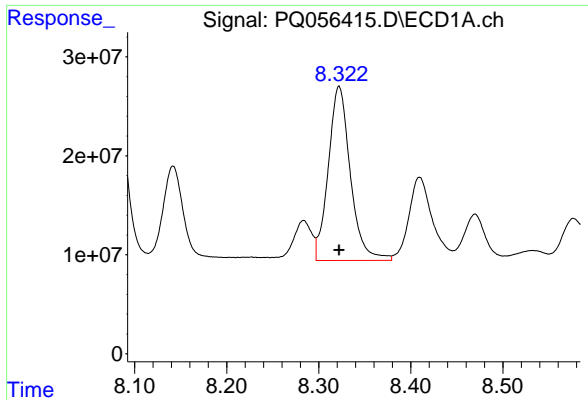
#33 AR-1260-3

R.T.: 8.081 min
 Delta R.T.: 0.000 min
 Response: 257164606
 Conc: 519.08 ng/ml



#33 AR-1260-3

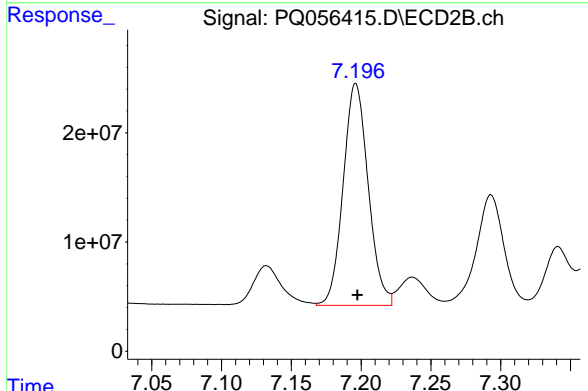
R.T.: 6.729 min
 Delta R.T.: -0.001 min
 Response: 345254231
 Conc: 513.79 ng/ml



#34 AR-1260-4

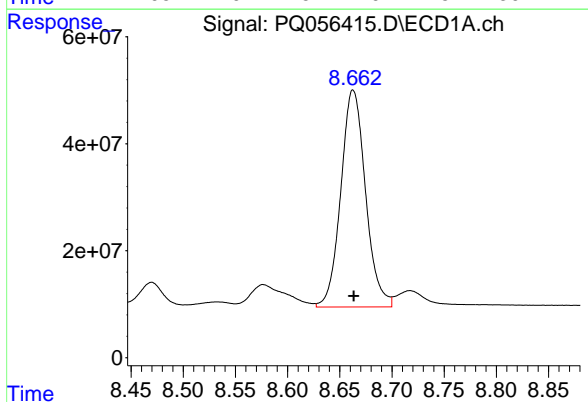
R.T.: 8.322 min
 Delta R.T.: 0.000 min
 Response: 292923536
 Conc: 507.66 ng/ml

Instrument :
 ECD_Q
 ClientSampleId :
 AR1660CCC500



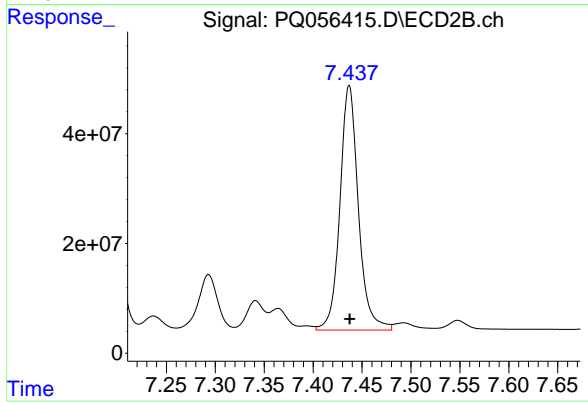
#34 AR-1260-4

R.T.: 7.196 min
 Delta R.T.: -0.001 min
 Response: 253966196
 Conc: 496.87 ng/ml



#35 AR-1260-5

R.T.: 8.663 min
 Delta R.T.: 0.000 min
 Response: 669091210
 Conc: 501.28 ng/ml



#35 AR-1260-5

R.T.: 7.437 min
 Delta R.T.: 0.000 min
 Response: 586475334
 Conc: 502.06 ng/ml