

Data Path : Z:\pestpcbsrv\HPCHEM1\ECD_Q\Data\PQ030922\
 Data File : PQ056423.D
 Signal(s) : Signal #1: ECD1A.ch Signal #2: ECD2B.ch
 Acq On : 09 Mar 2022 23:09
 Operator : YP\AJ
 Sample : N1645-01
 Misc : AR1262 LOD 40 PPB
 ALS Vial : 48 Sample Multiplier: 1

Instrument :
 ECD_Q
ClientSampleId :
 LOD-MDL-SOIL-01-QT1-2022

Manual Integrations
APPROVED

Reviewed By :Yogesh Patel 03/10/2022
 Supervised By :Ankita Jodhani 03/10/2022

Integration File signal 1: autoint1.e
 Integration File signal 2: autoint2.e
 Quant Time: Mar 10 02:51:42 2022
 Quant Method : Z:\pestpcbsrv\HPCHEM1\ECD_Q\Method\PQ030822.M
 Quant Title : GC EXTRACTABLES
 QLast Update : Wed Mar 09 03:41:18 2022
 Response via : Initial Calibration
 Integrator: ChemStation

Volume Inj. : 2 µl
 Signal #1 Phase : ZB-MR1 Signal #2 Phase: ZB-MR2
 Signal #1 Info : 30Mx0.32mmx 0.50µ Signal #2 Info : 30M x 0.32mm x 0.25µm

Compound	RT#1	RT#2	Resp#1	Resp#2	ng/ml	ng/ml

System Monitoring Compounds						
1) SA Tetrachlo...	4.677	3.846	324.4E6	304.6E6	24.735	24.265
2) SA Decachlor...	10.585	8.837	408.5E6	228.8E6	25.717	24.048
Target Compounds						
36) L8 AR-1262-1	8.081	6.903	30163220	9872211	42.238	29.141 #
37) L8 AR-1262-2	8.663	7.438	56705700	36675863	39.126	29.544
38) L8 AR-1262-3	8.988	7.717	27001497	16499595	35.041m	32.509
39) L8 AR-1262-4	9.089	7.783	25103861	28824287	46.132m	30.694 #
40) L8 AR-1262-5	9.793	8.281	20803351	12601795	33.854	34.338

(f)=RT Delta > 1/2 Window (#)=Amounts differ by > 25% (m)=manual int.

Data Path : Z:\pestpcbsrv\HPCHEM1\ECD_Q\Data\PQ030922\
 Data File : PQ056423.D
 Signal(s) : Signal #1: ECD1A.ch Signal #2: ECD2B.ch
 Acq On : 09 Mar 2022 23:09
 Operator : YP\AJ
 Sample : N1645-01
 Misc : AR1262 LOD 40 PPB
 ALS Vial : 48 Sample Multiplier: 1

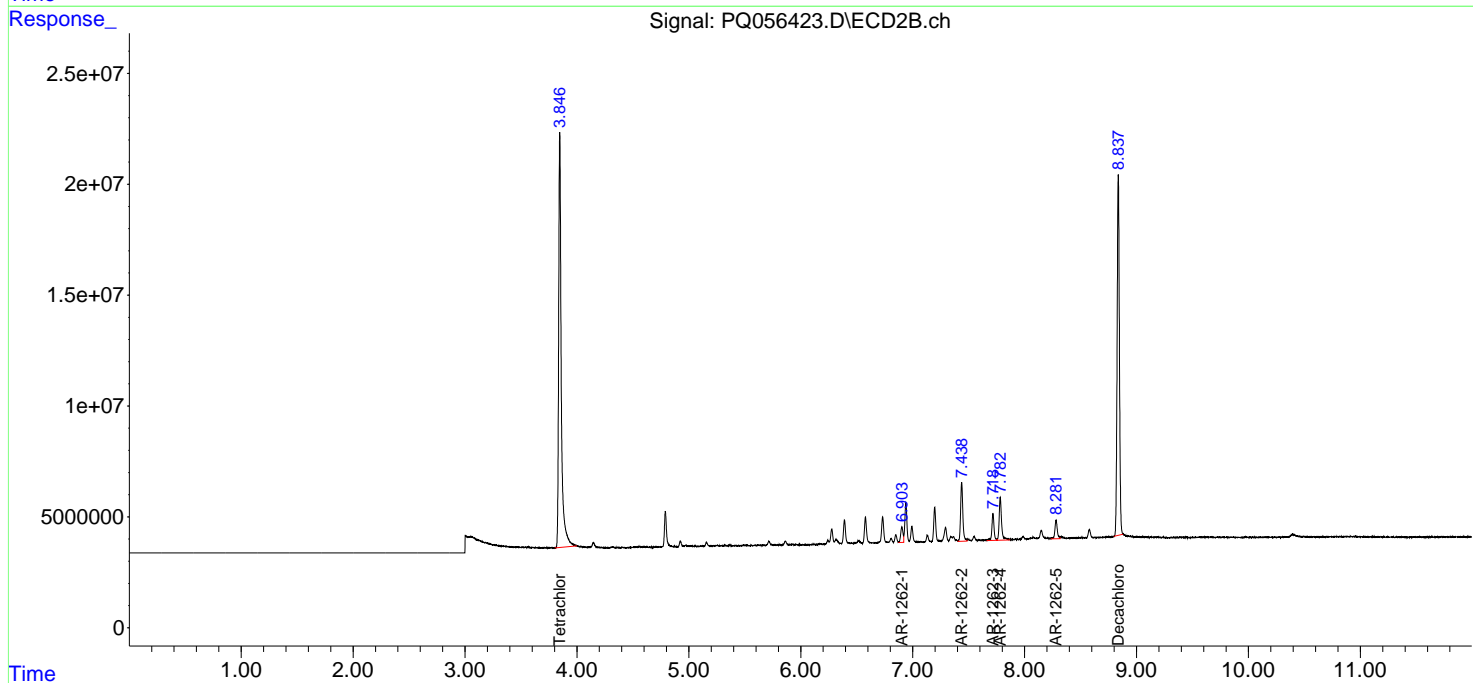
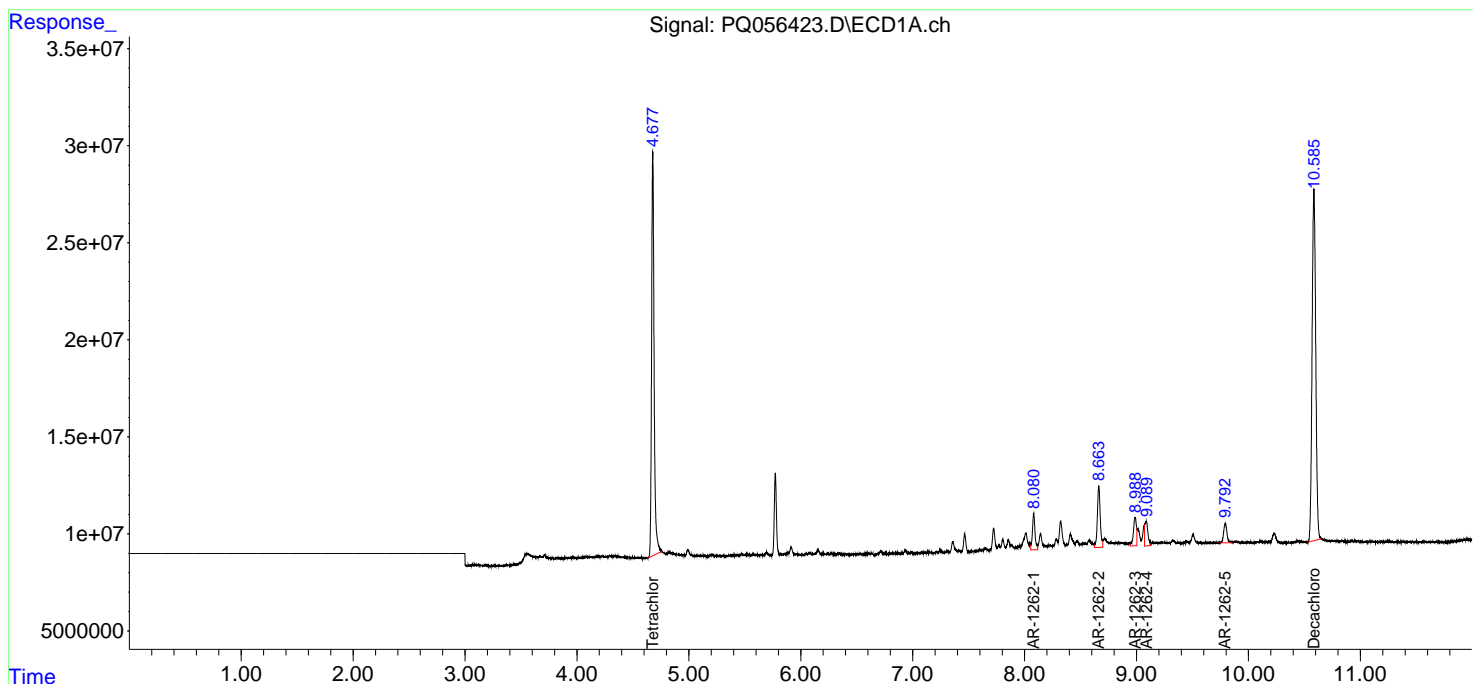
Instrument :
 ECD_Q
ClientSampleId :
 LOD-MDL-SOIL-01-QT1-2022

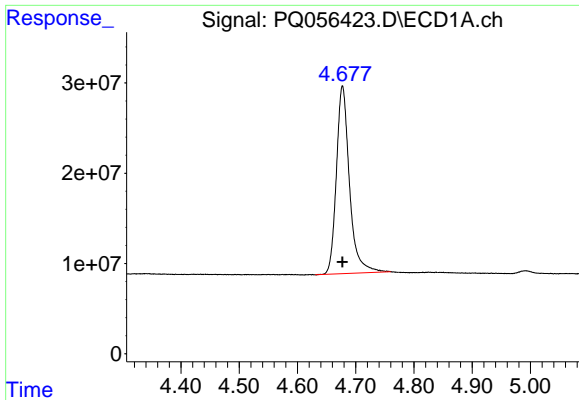
Manual Integrations
APPROVED

Reviewed By :Yogesh Patel 03/10/2022
 Supervised By :Ankita Jodhani 03/10/2022

Integration File signal 1: autoint1.e
 Integration File signal 2: autoint2.e
 Quant Time: Mar 10 02:51:42 2022
 Quant Method : Z:\pestpcbsrv\HPCHEM1\ECD_Q\Method\PQ030822.M
 Quant Title : GC EXTRACTABLES
 QLast Update : Wed Mar 09 03:41:18 2022
 Response via : Initial Calibration
 Integrator: ChemStation

Volume Inj. : 2 µl
 Signal #1 Phase : ZB-MR1 Signal #2 Phase: ZB-MR2
 Signal #1 Info : 30Mx0.32mmx 0.50µ Signal #2 Info : 30M x 0.32mm x 0.25µm





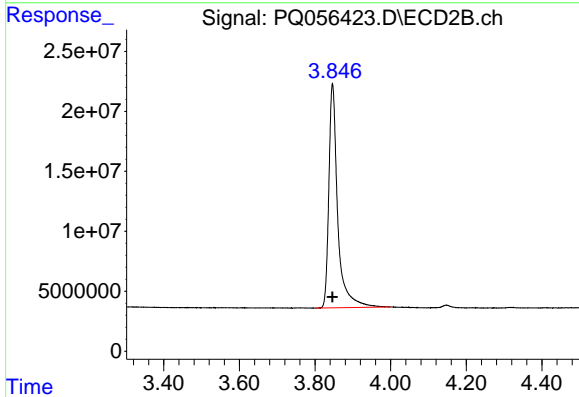
#1 Tetrachloro-m-xylene

R.T.: 4.677 min
 Delta R.T.: 0.000 min
 Response: 324421207
 Conc: 24.74 ng/ml

Instrument :
 ECD_Q
 ClientSampleId :
 LOD-MDL-SOIL-01-QT1-2022

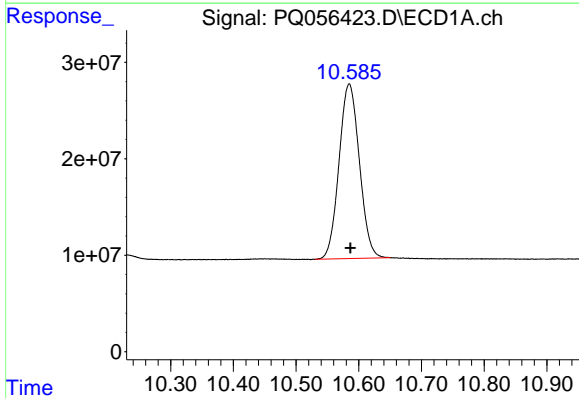
Manual Integrations
 APPROVED

Reviewed By :Yogesh Patel 03/10/2022
 Supervised By :Ankita Jodhani 03/10/2022



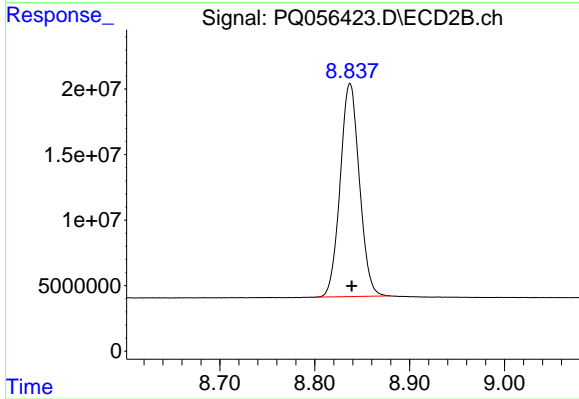
#1 Tetrachloro-m-xylene

R.T.: 3.846 min
 Delta R.T.: 0.000 min
 Response: 304619026
 Conc: 24.27 ng/ml



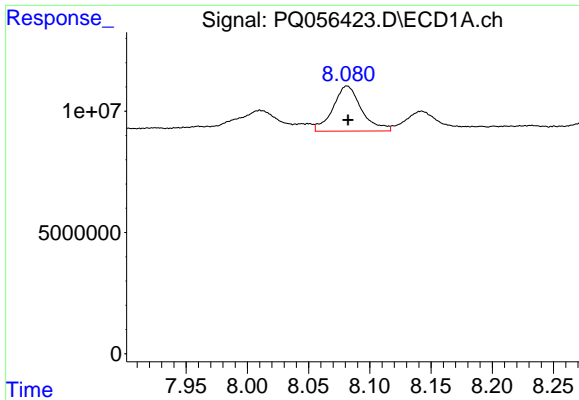
#2 Decachlorobiphenyl

R.T.: 10.585 min
 Delta R.T.: -0.002 min
 Response: 408474884
 Conc: 25.72 ng/ml



#2 Decachlorobiphenyl

R.T.: 8.837 min
 Delta R.T.: -0.002 min
 Response: 228807619
 Conc: 24.05 ng/ml



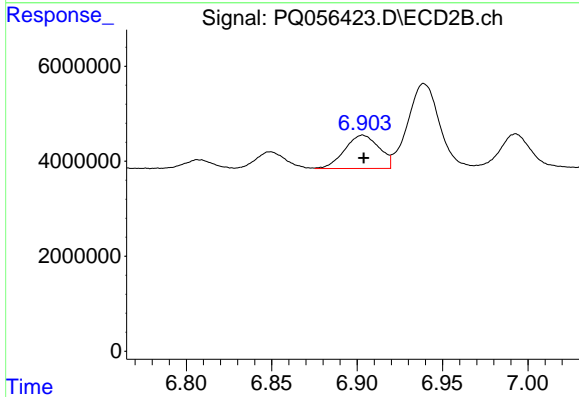
#36 AR-1262-1

R.T.: 8.081 min
 Delta R.T.: -0.001 min
 Response: 30163220
 Conc: 42.24 ng/ml

Instrument : ECD_Q
 ClientSampleId : LOD-MDL-SOIL-01-QT1-2022

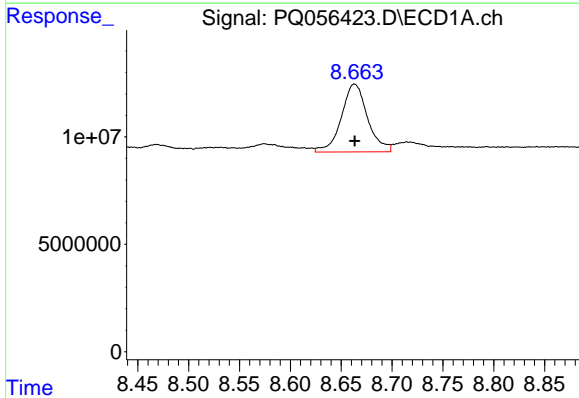
Manual Integrations
APPROVED

Reviewed By :Yogesh Patel 03/10/2022
 Supervised By :Ankita Jodhani 03/10/2022



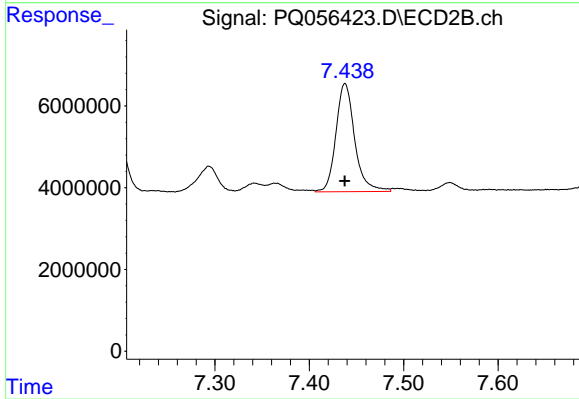
#36 AR-1262-1

R.T.: 6.903 min
 Delta R.T.: 0.000 min
 Response: 9872211
 Conc: 29.14 ng/ml



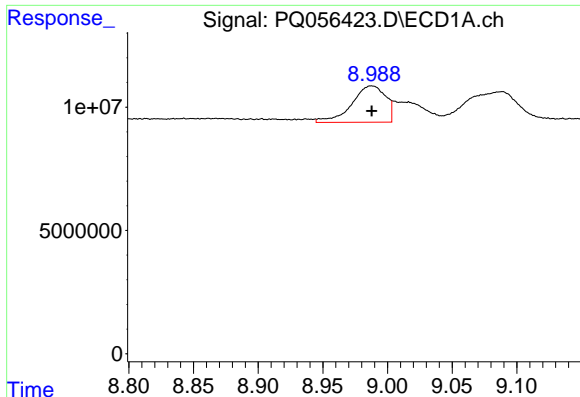
#37 AR-1262-2

R.T.: 8.663 min
 Delta R.T.: 0.000 min
 Response: 56705700
 Conc: 39.13 ng/ml



#37 AR-1262-2

R.T.: 7.438 min
 Delta R.T.: 0.000 min
 Response: 36675863
 Conc: 29.54 ng/ml



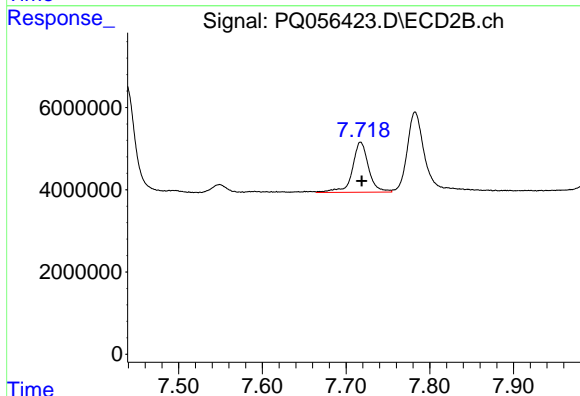
#38 AR-1262-3

R.T.: 8.988 min
 Delta R.T.: 0.000 min
 Response: 27001497
 Conc: 35.04 ng/ml

Instrument :
 ECD_Q
 ClientSampleId :
 LOD-MDL-SOIL-01-QT1-2022

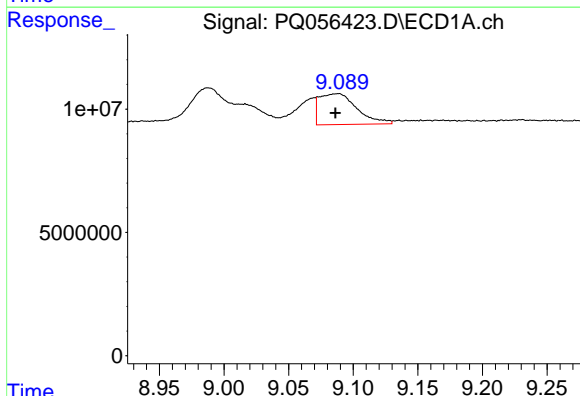
Manual Integrations
 APPROVED

Reviewed By :Yogesh Patel 03/10/2022
 Supervised By :Ankita Jodhani 03/10/2022



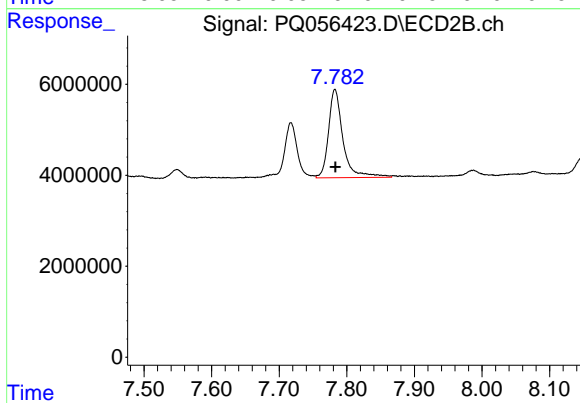
#38 AR-1262-3

R.T.: 7.717 min
 Delta R.T.: -0.002 min
 Response: 16499595
 Conc: 32.51 ng/ml



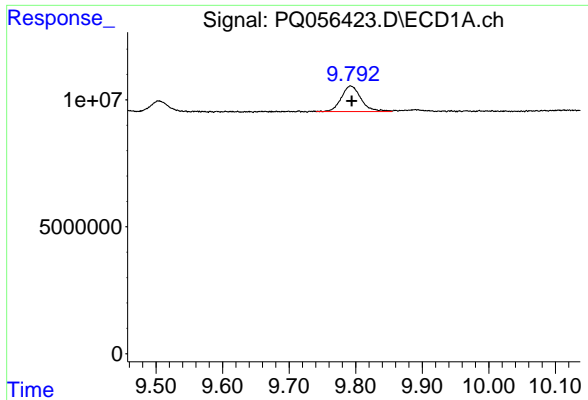
#39 AR-1262-4

R.T.: 9.089 min
 Delta R.T.: 0.003 min
 Response: 25103861
 Conc: 46.13 ng/ml m



#39 AR-1262-4

R.T.: 7.783 min
 Delta R.T.: 0.000 min
 Response: 28824287
 Conc: 30.69 ng/ml



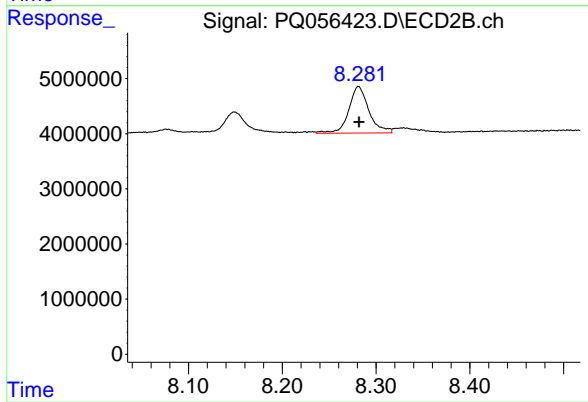
#40 AR-1262-5

R.T.: 9.793 min
Delta R.T.: -0.001 min
Response: 20803351
Conc: 33.85 ng/ml

Instrument :
ECD_Q
ClientSampleId :
LOD-MDL-SOIL-01-QT1-2022

Manual Integrations
APPROVED

Reviewed By :Yogesh Patel 03/10/2022
Supervised By :Ankita Jodhani 03/10/2022



#40 AR-1262-5

R.T.: 8.281 min
Delta R.T.: 0.000 min
Response: 12601795
Conc: 34.34 ng/ml