

Data Path : Z:\pestpcbsrv\HPCHEM1\ECD_Q\Data\PQ030922\
 Data File : PQ056427.D
 Signal(s) : Signal #1: ECD1A.ch Signal #2: ECD2B.ch
 Acq On : 10 Mar 2022 00:22
 Operator : YP\AJ
 Sample : N1645-07
 Misc : AR1660 LOD 40 PPB
 ALS Vial : 50 Sample Multiplier: 1

Instrument :
 ECD_Q
ClientSampleId :
 LOD-MDL-WATER-01-QT1-2022

Integration File signal 1: autoint1.e
 Integration File signal 2: autoint2.e
 Quant Time: Mar 10 02:53:35 2022
 Quant Method : Z:\pestpcbsrv\HPCHEM1\ECD_Q\Method\PQ030822.M
 Quant Title : GC EXTRACTABLES
 QLast Update : Wed Mar 09 03:41:18 2022
 Response via : Initial Calibration
 Integrator: ChemStation

Volume Inj. : 2 µl
 Signal #1 Phase : ZB-MR2 Signal #2 Phase: ZB-MR2
 Signal #1 Info : 30Mx0.32mmx 0.50µ Signal #2 Info : 30M x 0.32mm x 0.25µm

Compound	RT#1	RT#2	Resp#1	Resp#2	ng/ml	ng/ml

System Monitoring Compounds						
1) SA Tetrachlo...	4.678	3.845	360.8E6	341.5E6	27.512	27.204
2) SA Decachlor...	10.585	8.836	459.7E6	259.7E6	28.941	27.298
Target Compounds						
3) L1 AR-1016-1	5.873	4.926	13747650	10787616	41.347	30.995 #
4) L1 AR-1016-2	5.890	4.945	27657498	19590881	41.196	29.080 #
5) L1 AR-1016-3	5.950	5.119	16700690	10422932	39.029	35.511
6) L1 AR-1016-4	6.053	5.155	14546474	9880184	41.032	38.375
7) L1 AR-1016-5	6.339	5.369	11666550	9577163	40.708	31.258
31) L7 AR-1260-1	7.464	6.390	16946528	18565133	35.571	29.798
32) L7 AR-1260-2	7.723	6.577	27323736	21600839	44.469	29.674 #
33) L7 AR-1260-3	8.082	6.730	24778871	19712742	50.015	29.335 #
34) L7 AR-1260-4	8.321	7.197	26831371	16457039	46.501	32.197 #
35) L7 AR-1260-5	8.662	7.437	56668599	37594447	42.456	32.183

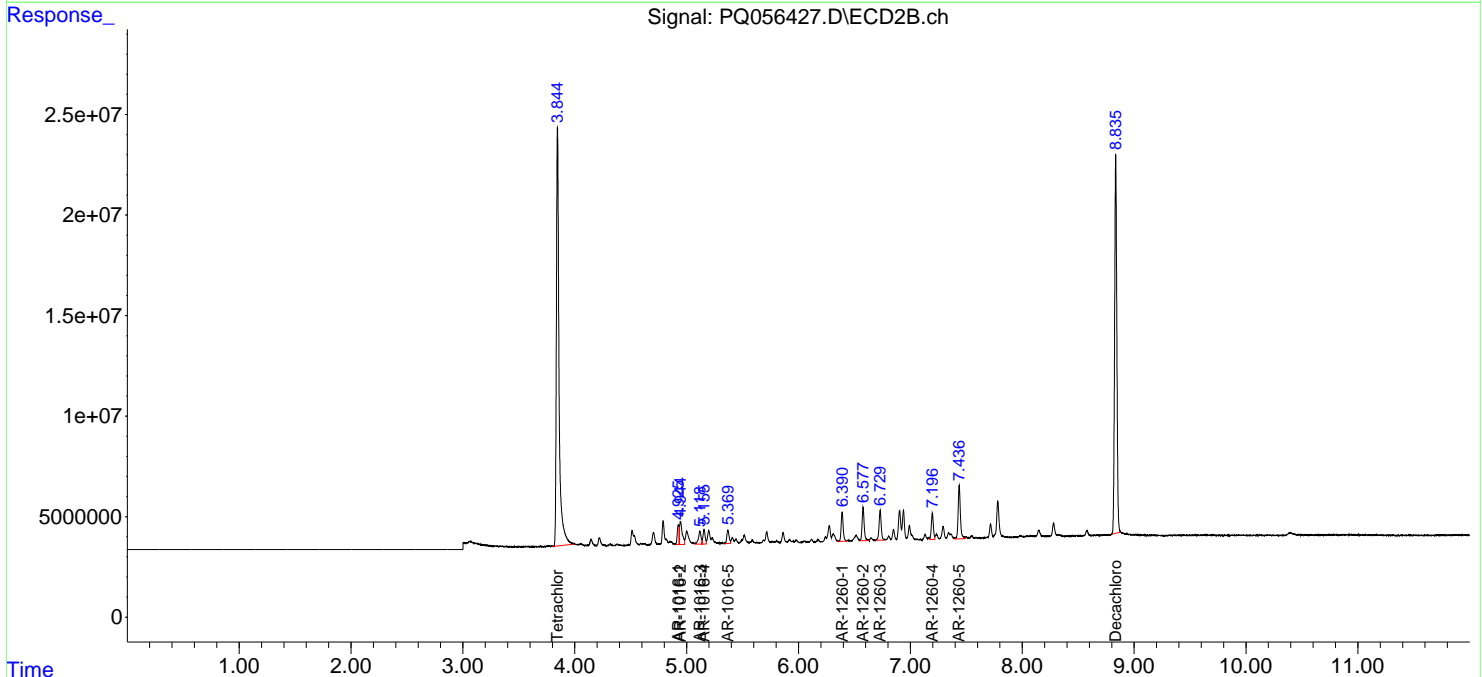
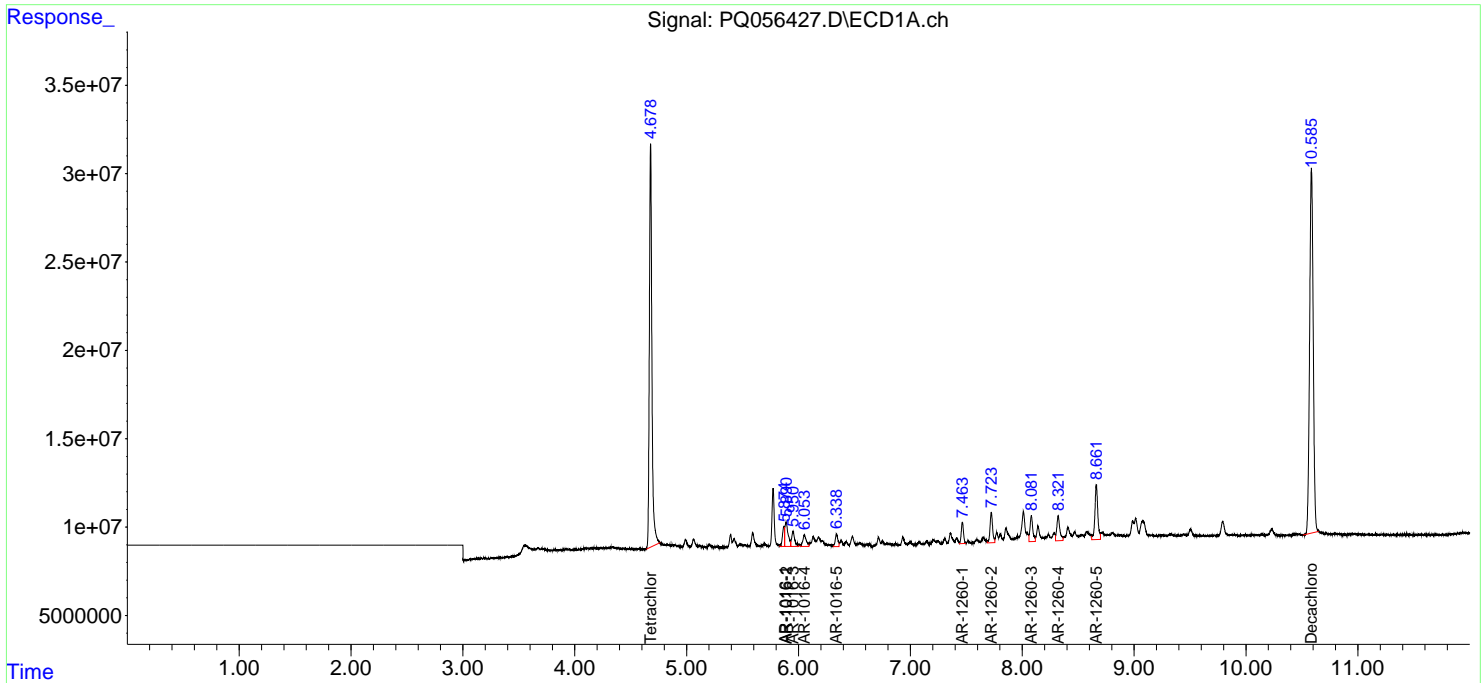
(f)=RT Delta > 1/2 Window (#)=Amounts differ by > 25% (m)=manual int.

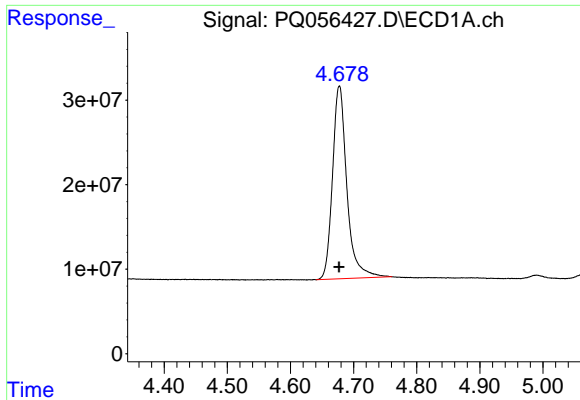
Data Path : Z:\pestpcbsrv\HPCHEM1\ECD_Q\Data\PQ030922\
 Data File : PQ056427.D
 Signal(s) : Signal #1: ECD1A.ch Signal #2: ECD2B.ch
 Acq On : 10 Mar 2022 00:22
 Operator : YP\AJ
 Sample : N1645-07
 Misc : AR1660 LOD 40 PPB
 ALS Vial : 50 Sample Multiplier: 1

Instrument :
 ECD_Q
ClientSampleId :
 LOD-MDL-WATER-01-QT1-2022

Integration File signal 1: autoint1.e
 Integration File signal 2: autoint2.e
 Quant Time: Mar 10 02:53:35 2022
 Quant Method : Z:\pestpcbsrv\HPCHEM1\ECD_Q\Method\PQ030822.M
 Quant Title : GC EXTRACTABLES
 QLast Update : Wed Mar 09 03:41:18 2022
 Response via : Initial Calibration
 Integrator: ChemStation

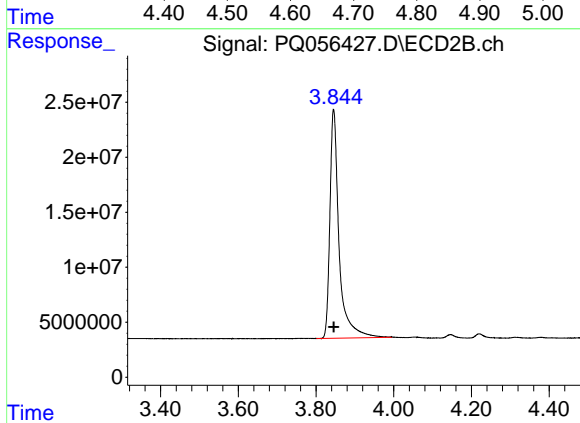
Volume Inj. : 2 µl
 Signal #1 Phase : ZB-MR1 Signal #2 Phase: ZB-MR2
 Signal #1 Info : 30Mx0.32mmx 0.50µ Signal #2 Info : 30M x 0.32mm x 0.25µm



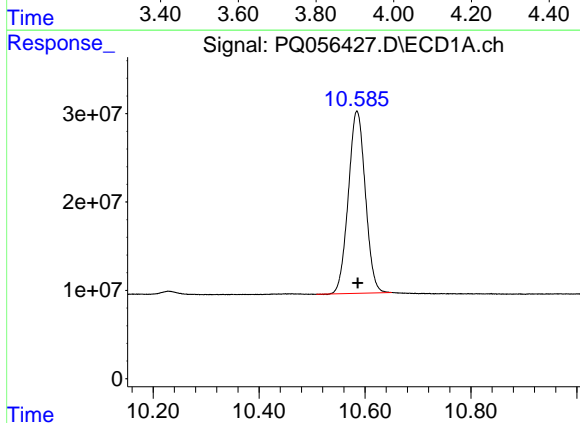


#1 Tetrachloro-m-xylene
 R.T.: 4.678 min
 Delta R.T.: 0.000 min
 Response: 360834528
 Conc: 27.51 ng/ml

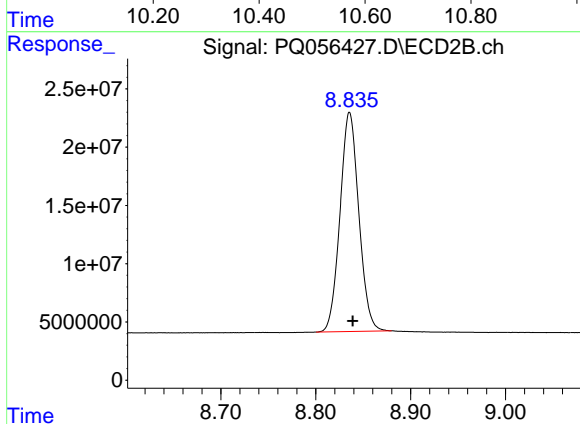
Instrument :
 ECD_Q
 ClientSampleId :
 LOD-MDL-WATER-01-QT1-2022



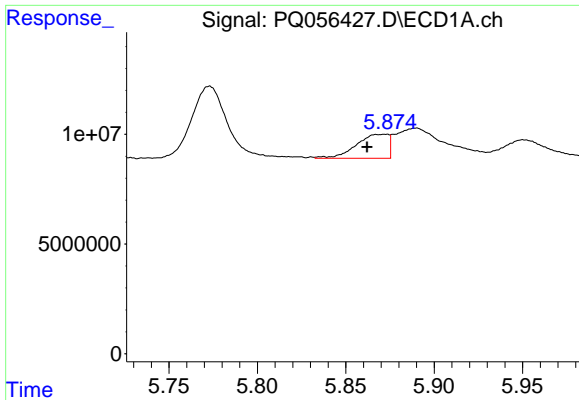
#1 Tetrachloro-m-xylene
 R.T.: 3.845 min
 Delta R.T.: 0.000 min
 Response: 341511013
 Conc: 27.20 ng/ml



#2 Decachlorobiphenyl
 R.T.: 10.585 min
 Delta R.T.: -0.002 min
 Response: 459691426
 Conc: 28.94 ng/ml



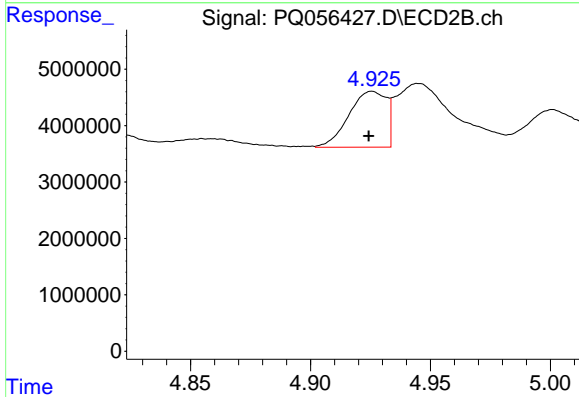
#2 Decachlorobiphenyl
 R.T.: 8.836 min
 Delta R.T.: -0.003 min
 Response: 259731939
 Conc: 27.30 ng/ml



#3 AR-1016-1

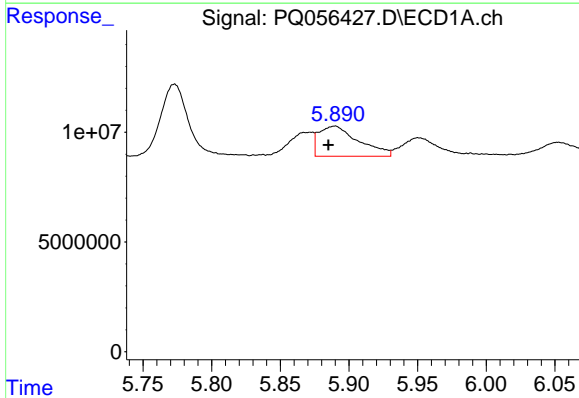
R.T.: 5.873 min
 Delta R.T.: 0.011 min
 Response: 13747650
 Conc: 41.35 ng/ml

Instrument :
 ECD_Q
 ClientSampleId :
 LOD-MDL-WATER-01-QT1-2022



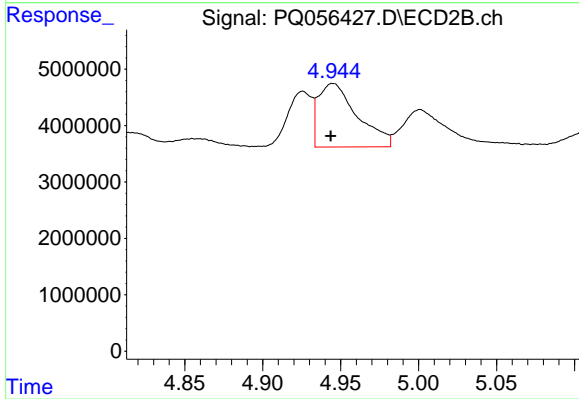
#3 AR-1016-1

R.T.: 4.926 min
 Delta R.T.: 0.001 min
 Response: 10787616
 Conc: 30.99 ng/ml



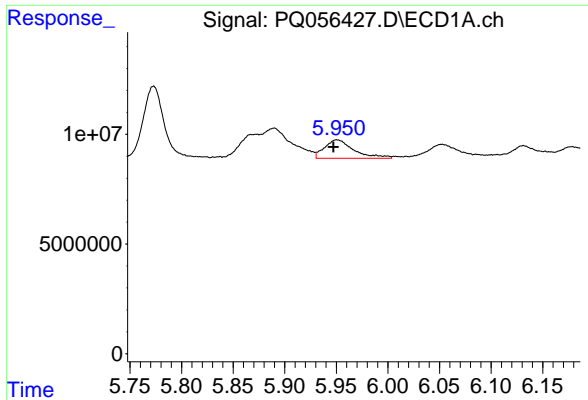
#4 AR-1016-2

R.T.: 5.890 min
 Delta R.T.: 0.005 min
 Response: 27657498
 Conc: 41.20 ng/ml



#4 AR-1016-2

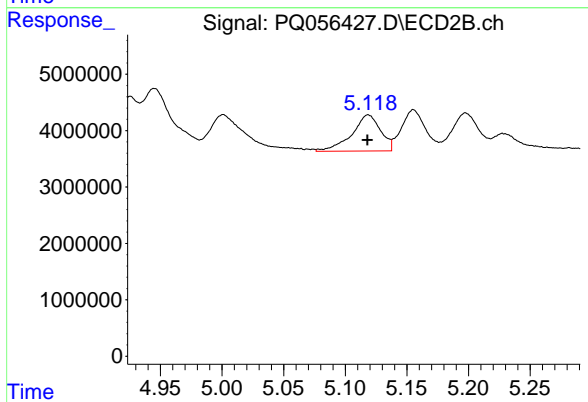
R.T.: 4.945 min
 Delta R.T.: 0.001 min
 Response: 19590881
 Conc: 29.08 ng/ml



#5 AR-1016-3

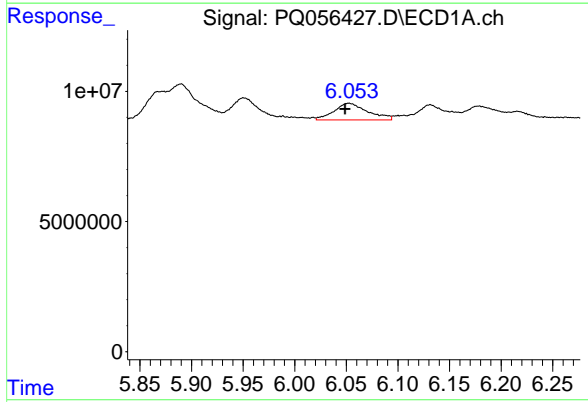
R.T.: 5.950 min
 Delta R.T.: 0.003 min
 Response: 16700690
 Conc: 39.03 ng/ml

Instrument :
 ECD_Q
 ClientSampleId :
 LOD-MDL-WATER-01-QT1-2022



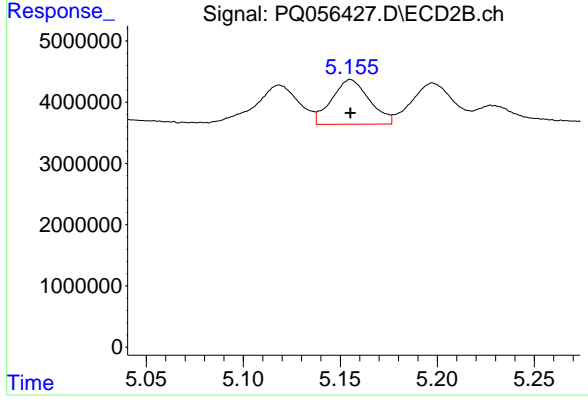
#5 AR-1016-3

R.T.: 5.119 min
 Delta R.T.: 0.000 min
 Response: 10422932
 Conc: 35.51 ng/ml



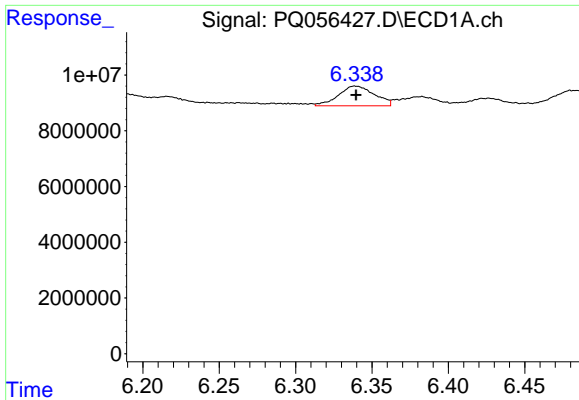
#6 AR-1016-4

R.T.: 6.053 min
 Delta R.T.: 0.004 min
 Response: 14546474
 Conc: 41.03 ng/ml



#6 AR-1016-4

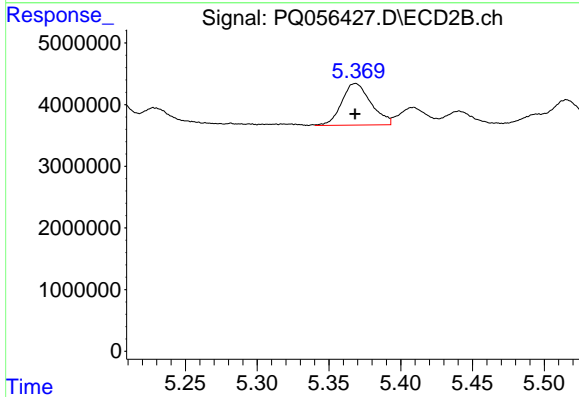
R.T.: 5.155 min
 Delta R.T.: 0.000 min
 Response: 9880184
 Conc: 38.38 ng/ml



#7 AR-1016-5

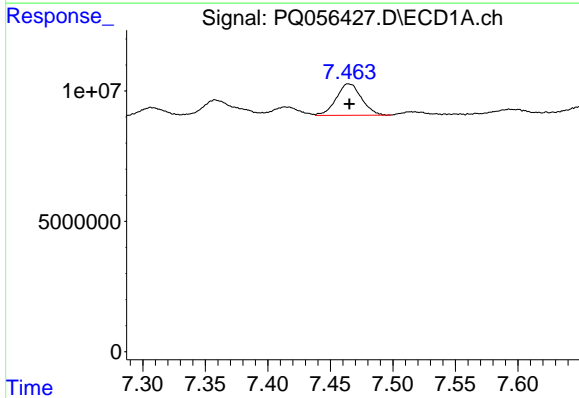
R.T.: 6.339 min
 Delta R.T.: 0.000 min
 Response: 11666550
 Conc: 40.71 ng/ml

Instrument :
 ECD_Q
 ClientSampleId :
 LOD-MDL-WATER-01-QT1-2022



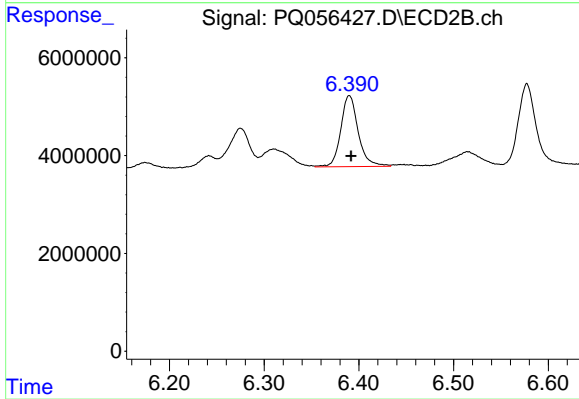
#7 AR-1016-5

R.T.: 5.369 min
 Delta R.T.: 0.000 min
 Response: 9577163
 Conc: 31.26 ng/ml



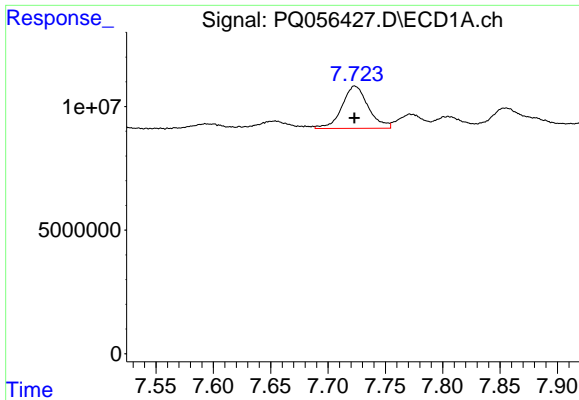
#31 AR-1260-1

R.T.: 7.464 min
 Delta R.T.: 0.000 min
 Response: 16946528
 Conc: 35.57 ng/ml



#31 AR-1260-1

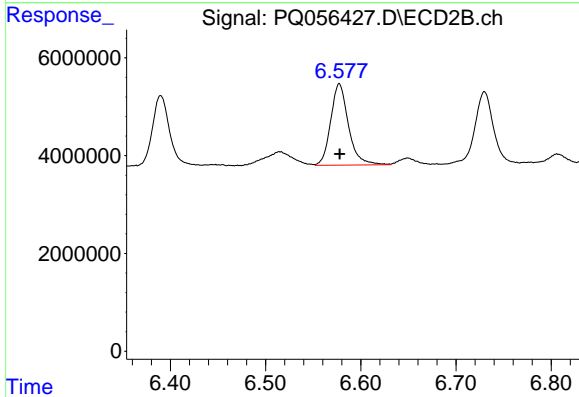
R.T.: 6.390 min
 Delta R.T.: -0.002 min
 Response: 18565133
 Conc: 29.80 ng/ml



#32 AR-1260-2

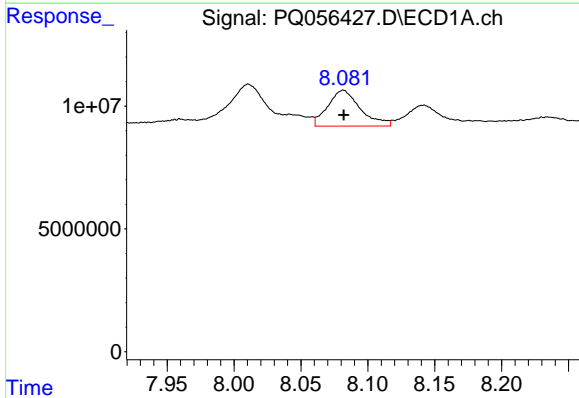
R.T.: 7.723 min
 Delta R.T.: 0.000 min
 Response: 27323736
 Conc: 44.47 ng/ml

Instrument :
 ECD_Q
 ClientSampleId :
 LOD-MDL-WATER-01-QT1-2022



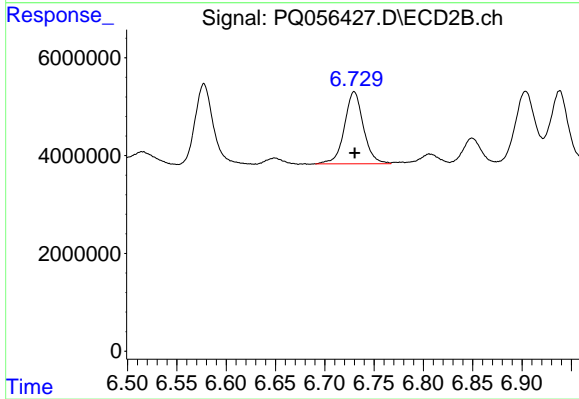
#32 AR-1260-2

R.T.: 6.577 min
 Delta R.T.: 0.000 min
 Response: 21600839
 Conc: 29.67 ng/ml



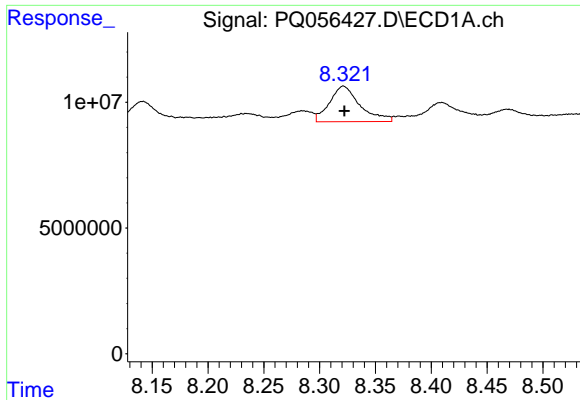
#33 AR-1260-3

R.T.: 8.082 min
 Delta R.T.: 0.000 min
 Response: 24778871
 Conc: 50.02 ng/ml



#33 AR-1260-3

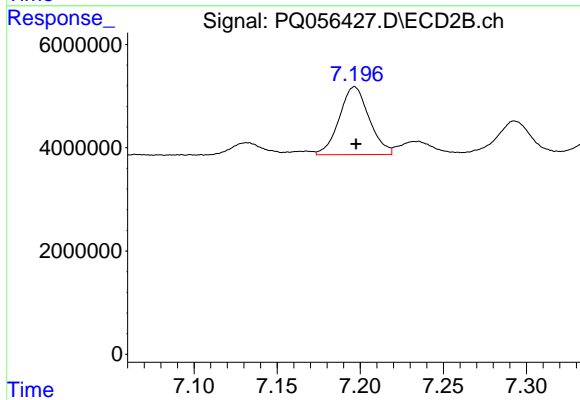
R.T.: 6.730 min
 Delta R.T.: 0.000 min
 Response: 19712742
 Conc: 29.34 ng/ml



#34 AR-1260-4

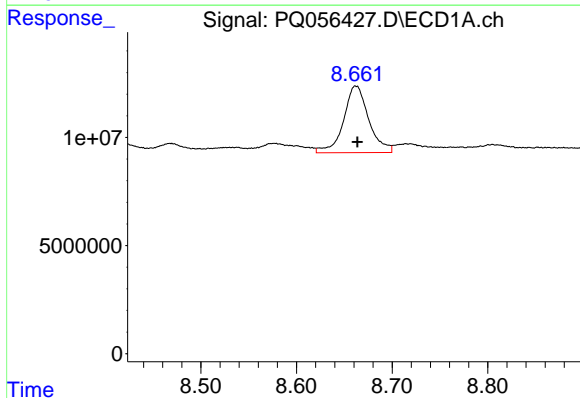
R.T.: 8.321 min
 Delta R.T.: 0.000 min
 Response: 26831371
 Conc: 46.50 ng/ml

Instrument :
 ECD_Q
 ClientSampleId :
 LOD-MDL-WATER-01-QT1-2022



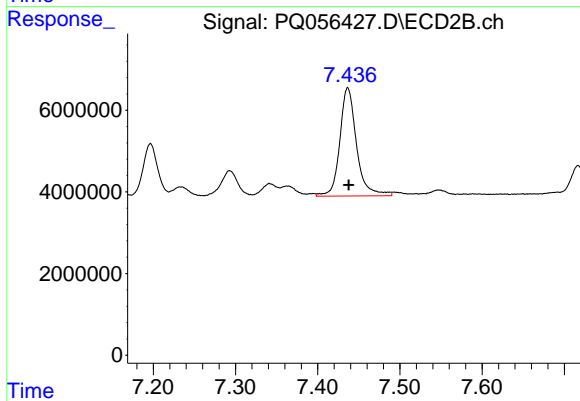
#34 AR-1260-4

R.T.: 7.197 min
 Delta R.T.: 0.000 min
 Response: 16457039
 Conc: 32.20 ng/ml



#35 AR-1260-5

R.T.: 8.662 min
 Delta R.T.: -0.001 min
 Response: 56668599
 Conc: 42.46 ng/ml



#35 AR-1260-5

R.T.: 7.437 min
 Delta R.T.: -0.001 min
 Response: 37594447
 Conc: 32.18 ng/ml