

Data Path : Z:\pestpcbsrv\HPCHEM1\ECD_Q\Data\PQ031021\
 Data File : PQ052485.D
 Signal(s) : Signal #1: ECD1A.ch Signal #2: ECD2B.ch
 Acq On : 09 Mar 2021 22:30
 Operator : DD\AJ
 Sample : M1458-01
 Misc : AR1248 LOD 25 PPB
 ALS Vial : 21 Sample Multiplier: 1

Instrument :
 ECD_Q
 ClientSampled :

Integration File signal 1: autoint1.e
 Integration File signal 2: autoint2.e
 Quant Time: Mar 10 02:49:49 2021
 Quant Method : Z:\pestpcbsrv\HPCHEM1\ECD_Q\Method\PQ031021.M
 Quant Title : GC EXTRACTABLES
 QLast Update : Wed Mar 10 02:40:50 2021
 Response via : Initial Calibration
 Integrator: ChemStation

Volume Inj. : 2 µl
 Signal #1 Phase : ZB-MR1 Signal #2 Phase: ZB-MR2
 Signal #1 Info : 30Mx0.32mmx 0.50µ Signal #2 Info : 30M x 0.32mm x 0.25µm

Compound	RT#1	RT#2	Resp#1	Resp#2	ng/ml	ng/ml
System Monitoring Compounds						
1) SA Tetrachlo...	5.226	4.243	442.6E6	154.8E6	17.426	17.016
2) SA Decachlor...	11.414	9.586	466.8E6	174.9E6	18.724	18.028
Target Compounds						
3) L1 AR-1016-1	6.550	5.502	14971703	1235232	17.685	3.823 #
4) L1 AR-1016-2	6.578	5.521	16556015	2104937	13.069	4.455 #
5) L1 AR-1016-3	6.647	5.715	9595125	2214818	12.838	9.165 #
6) L1 AR-1016-4	6.747	5.765	9997844	5095931	15.935	27.704 #
7) L1 AR-1016-5	7.063	5.997	16124682	6537952	27.635	26.917
8) L2 AR-1221-1	5.483	0.000	23281495	0	93.287	N.D. #
9) L2 AR-1221-2	5.583	4.594	16982682	2238859	93.755	33.708 #
10) L2 AR-1221-3	5.671	0.000	10440941	0	18.124	N.D. #
11) L3 AR-1232-1	5.671	0.000	10440941	0	21.726	N.D. #
12) L3 AR-1232-2	6.255	5.521	6484004	2104937	26.215	10.886 #
13) L3 AR-1232-3	6.578	5.715	16556015	2214818	31.388	22.900 #
14) L3 AR-1232-4	6.747	5.811	9997844	6036353	38.810	74.832 #
15) L3 AR-1232-5	6.843	5.997	16587451	6537952	92.102	72.400
16) L4 AR-1242-1	6.550	5.502	14971703	1235232	23.124	5.019 #
17) L4 AR-1242-2	6.578	5.521	16556015	2104937	17.270	5.992 #
18) L4 AR-1242-3	6.647	5.715	9595125	2214818	16.736	12.024 #
19) L4 AR-1242-4	6.747	5.811	9997844	6036353	21.051	35.822 #
20) L4 AR-1242-5	7.531	6.375	17913159	9392741	34.023	39.499
21) L5 AR-1248-1	6.550	5.502	14971703	1235232	30.937	6.661 #
22) L5 AR-1248-2	6.843	5.765	16587451	5095931	24.818	20.580
23) L5 AR-1248-3	7.063	5.811	16124682	6036353	20.829	23.504
24) L5 AR-1248-4	7.491	5.997	18588564	6537952	20.194	20.977
25) L5 AR-1248-5	7.531	6.419	17913159	6018271	19.604	17.874
26) L6 AR-1254-1	7.462	6.375	15765979	9392741	17.525	18.233
27) L6 AR-1254-2	7.696	6.535	18392387	2782648	13.018	6.218 #
28) L6 AR-1254-3	8.072	6.955	15000155	5483323	9.664	7.415
29) L6 AR-1254-4	8.366	7.194	8682087	4307385	7.577	8.625
30) L6 AR-1254-5	8.797	7.626	12957876	726142	10.655	1.064 #
31) L7 AR-1260-1	8.263f	7.107	9322247	5087615	8.940	10.913
32) L7 AR-1260-2	8.512	7.259f	6003870	766870	4.737	1.197 #
33) L7 AR-1260-3	8.855	7.443	568596	1310788	0.599	2.376 #
35) L7 AR-1260-5	0.000	8.186	0	6827001	N.D.	5.186 #
36) L8 AR-1262-1	8.855	7.626	568596	726142	0.404	2.021 #
37) L8 AR-1262-2	0.000	8.186	0	6827001	N.D.	4.616 #
38) L8 AR-1262-3	0.000	8.468	0	54844583	N.D.	94.976 #
41) L9 AR-1268-1	0.000	8.468	0	54844583	N.D.	32.072 #
45) L9 AR-1268-5	11.053	9.325	4263355	13216934	0.474	3.407 #

Data Path : Z:\pestpcbsrv\HPCHEM1\ECD_Q\Data\PQ031021\
Data File : PQ052485.D
Signal(s) : Signal #1: ECD1A.ch Signal #2: ECD2B.ch
Acq On : 09 Mar 2021 22:30
Operator : DD\AJ
Sample : M1458-01
Misc : AR1248 LOD 25 PPB
ALS Vial : 21 Sample Multiplier: 1

Instrument :
ECD_Q
ClientSampleId :

Integration File signal 1: autoint1.e
Integration File signal 2: autoint2.e
Quant Time: Mar 10 02:49:49 2021
Quant Method : Z:\pestpcbsrv\HPCHEM1\ECD_Q\Method\PQ031021.M
Quant Title : GC EXTRACTABLES
QLast Update : Wed Mar 10 02:40:50 2021
Response via : Initial Calibration
Integrator: ChemStation

Volume Inj. : 2 µl
Signal #1 Phase : ZB-MR1 Signal #2 Phase: ZB-MR2
Signal #1 Info : 30Mx0.32mmx 0.50µ Signal #2 Info : 30M x 0.32mm x 0.25µm

Compound	RT#1	RT#2	Resp#1	Resp#2	ng/ml	ng/ml
----------	------	------	--------	--------	-------	-------

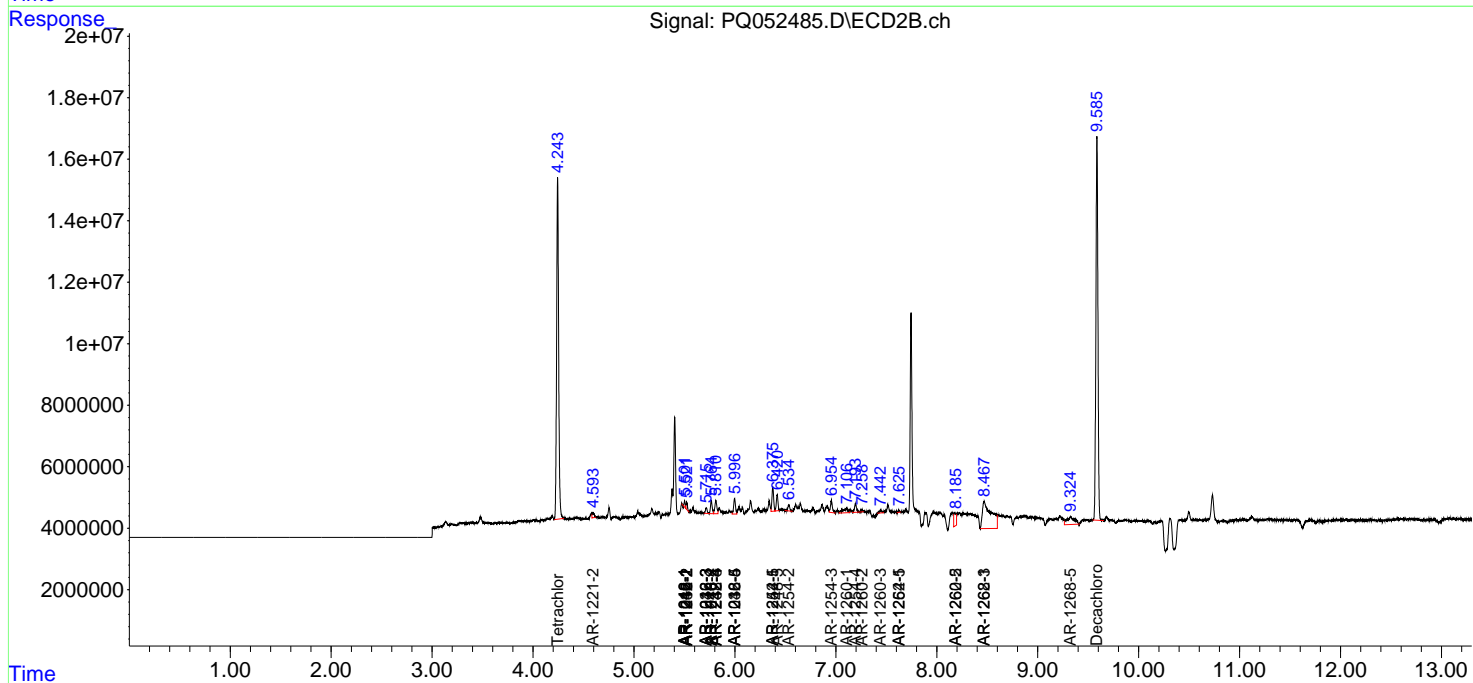
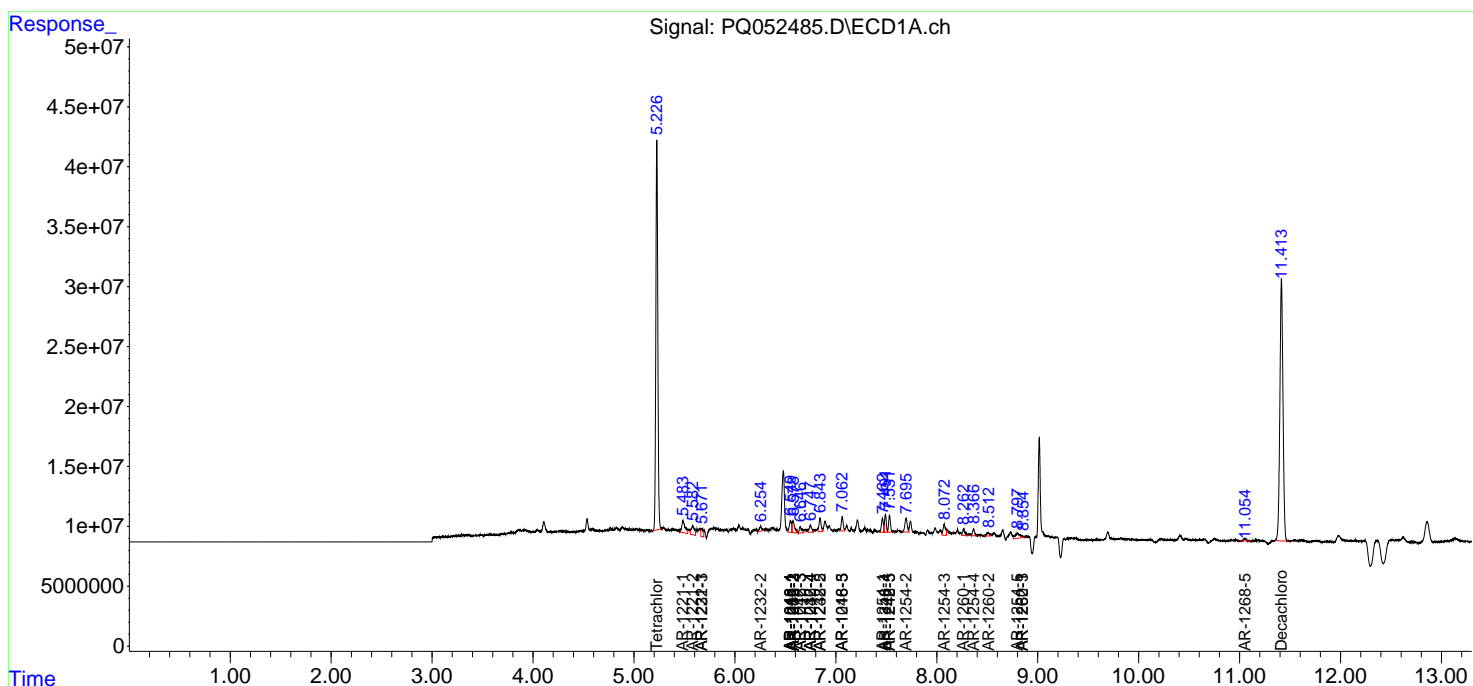
(f)=RT Delta > 1/2 Window (#)=Amounts differ by > 25% (m)=manual int.

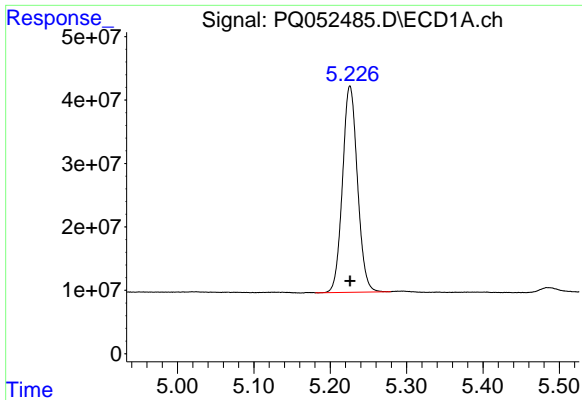
Data Path : Z:\pestpcbsrv\HPCHEM1\ECD_Q\Data\PQ031021\
 Data File : PQ052485.D
 Signal(s) : Signal #1: ECD1A.ch Signal #2: ECD2B.ch
 Acq On : 09 Mar 2021 22:30
 Operator : DD\AJ
 Sample : M1458-01
 Misc : AR1248 LOD 25 PPB
 ALS Vial : 21 Sample Multiplier: 1

Instrument :
 ECD_Q
 ClientSampled :

Integration File signal 1: autoint1.e
 Integration File signal 2: autoint2.e
 Quant Time: Mar 10 02:49:49 2021
 Quant Method : Z:\pestpcbsrv\HPCHEM1\ECD_Q\Method\PQ031021.M
 Quant Title : GC EXTRACTABLES
 QLast Update : Wed Mar 10 02:40:50 2021
 Response via : Initial Calibration
 Integrator: ChemStation

Volume Inj. : 2 µl
 Signal #1 Phase : ZB-MR1 Signal #2 Phase: ZB-MR2
 Signal #1 Info : 30Mx0.32mmx 0.50µ Signal #2 Info : 30M x 0.32mm x 0.25µm

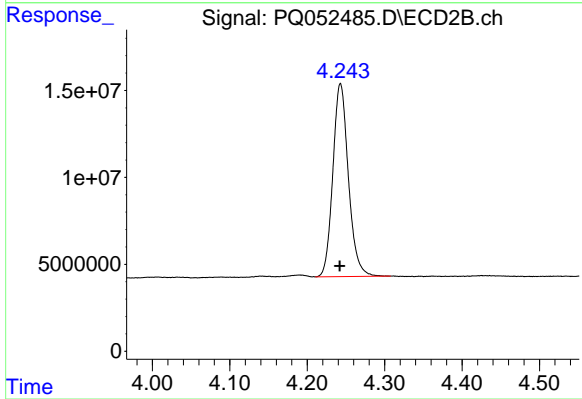




#1 Tetrachloro-m-xylene

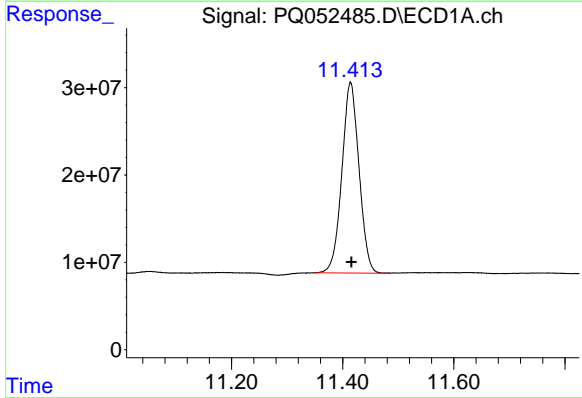
R.T.: 5.226 min
 Delta R.T.: 0.000 min
 Response: 442632370
 Conc: 17.43 ng/ml

Instrument :
 ECD_Q
 ClientSampleId :



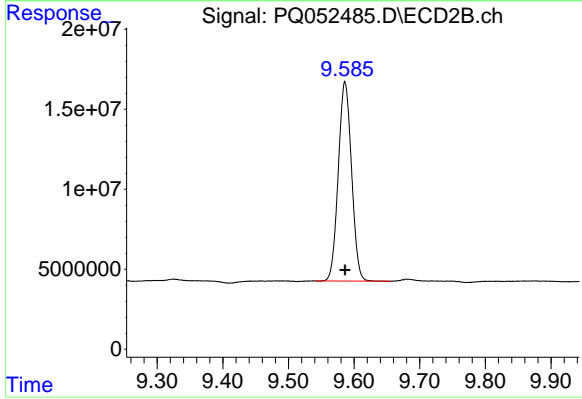
#1 Tetrachloro-m-xylene

R.T.: 4.243 min
 Delta R.T.: 0.001 min
 Response: 154785298
 Conc: 17.02 ng/ml



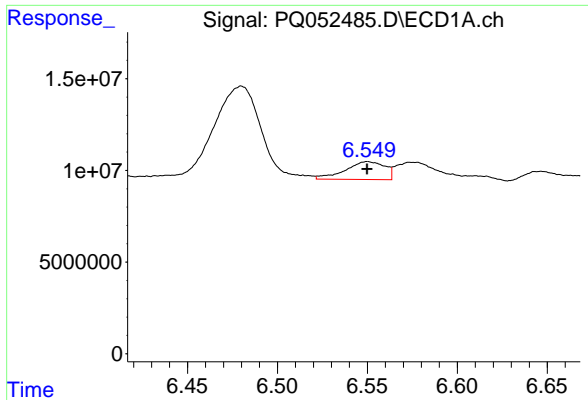
#2 Decachlorobiphenyl

R.T.: 11.414 min
 Delta R.T.: -0.001 min
 Response: 466785890
 Conc: 18.72 ng/ml



#2 Decachlorobiphenyl

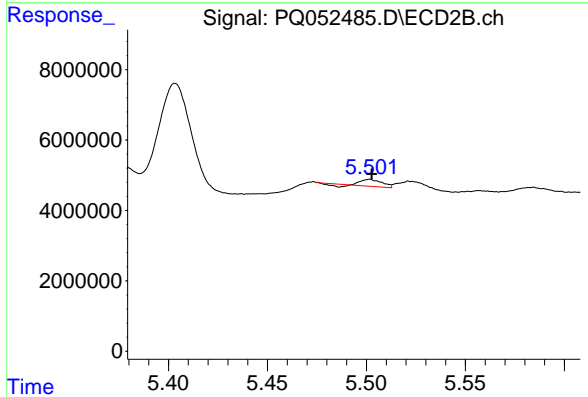
R.T.: 9.586 min
 Delta R.T.: 0.000 min
 Response: 174861400
 Conc: 18.03 ng/ml



#3 AR-1016-1

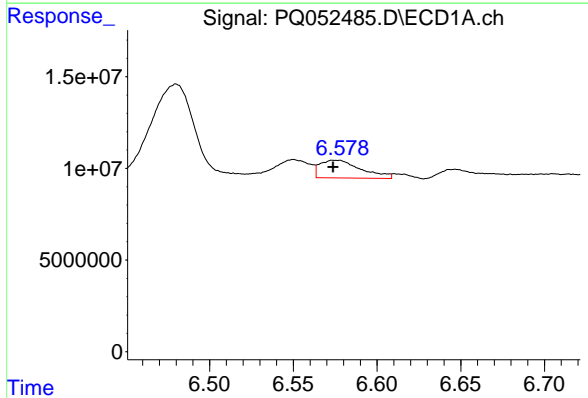
R.T.: 6.550 min
 Delta R.T.: 0.000 min
 Response: 14971703
 Conc: 17.68 ng/ml

Instrument :
 ECD_Q
 ClientSampled :



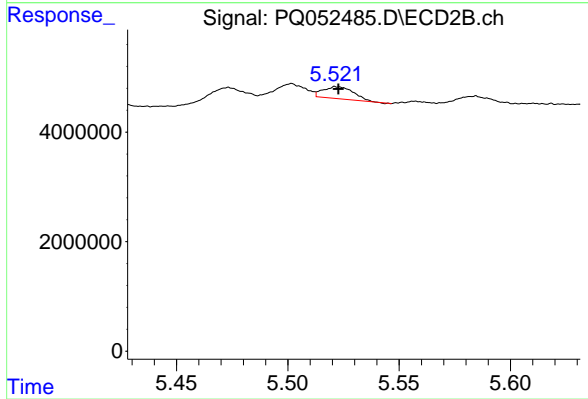
#3 AR-1016-1

R.T.: 5.502 min
 Delta R.T.: 0.000 min
 Response: 1235232
 Conc: 3.82 ng/ml



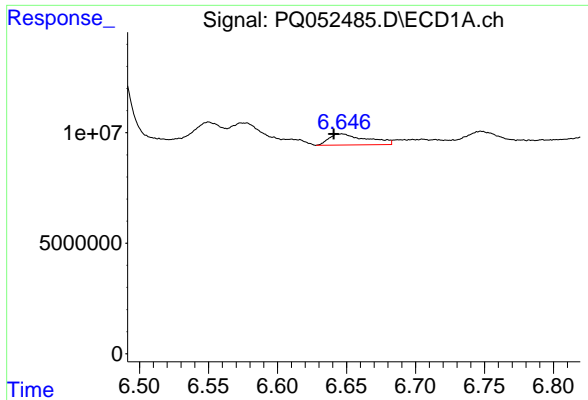
#4 AR-1016-2

R.T.: 6.578 min
 Delta R.T.: 0.004 min
 Response: 16556015
 Conc: 13.07 ng/ml



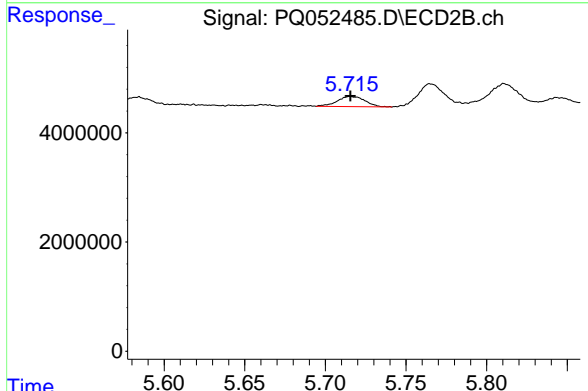
#4 AR-1016-2

R.T.: 5.521 min
 Delta R.T.: -0.001 min
 Response: 2104937
 Conc: 4.46 ng/ml

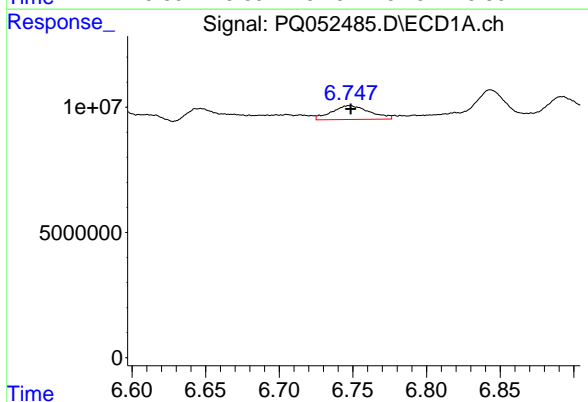


#5 AR-1016-3
 R.T.: 6.647 min
 Delta R.T.: 0.006 min
 Response: 9595125
 Conc: 12.84 ng/ml

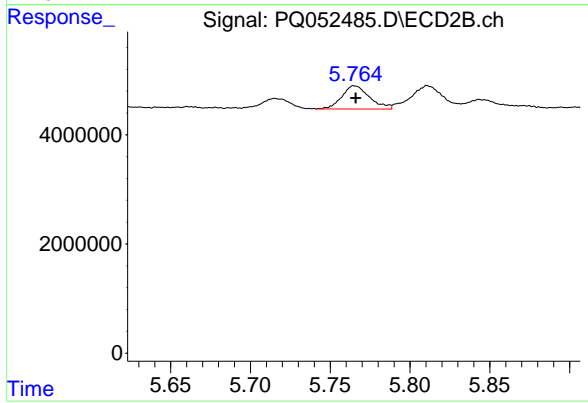
Instrument :
 ECD_Q
 ClientSampleId :



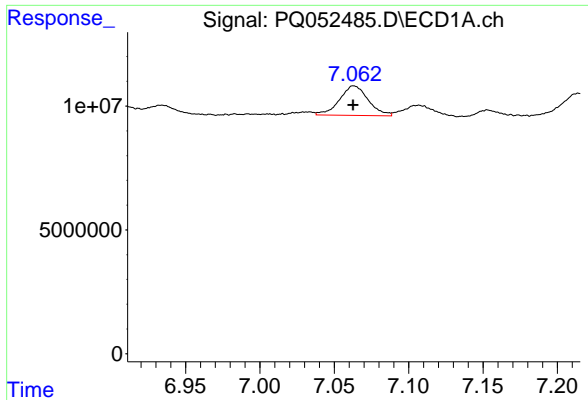
#5 AR-1016-3
 R.T.: 5.715 min
 Delta R.T.: 0.000 min
 Response: 2214818
 Conc: 9.17 ng/ml



#6 AR-1016-4
 R.T.: 6.747 min
 Delta R.T.: -0.001 min
 Response: 9997844
 Conc: 15.93 ng/ml



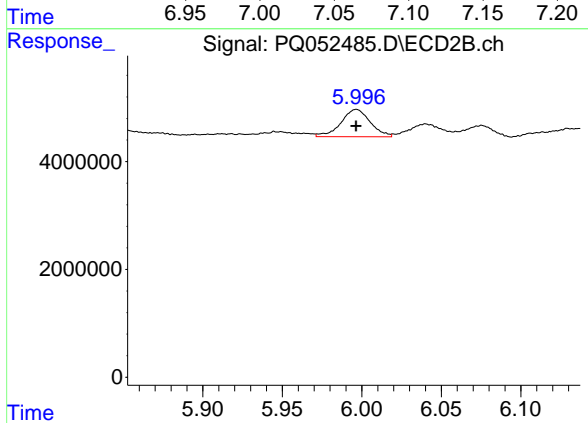
#6 AR-1016-4
 R.T.: 5.765 min
 Delta R.T.: -0.001 min
 Response: 5095931
 Conc: 27.70 ng/ml



#7 AR-1016-5

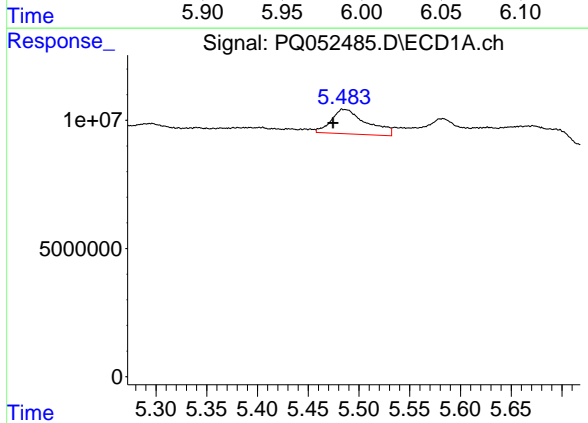
R.T.: 7.063 min
 Delta R.T.: 0.000 min
 Response: 16124682
 Conc: 27.63 ng/ml

Instrument :
 ECD_Q
 ClientSampleId :



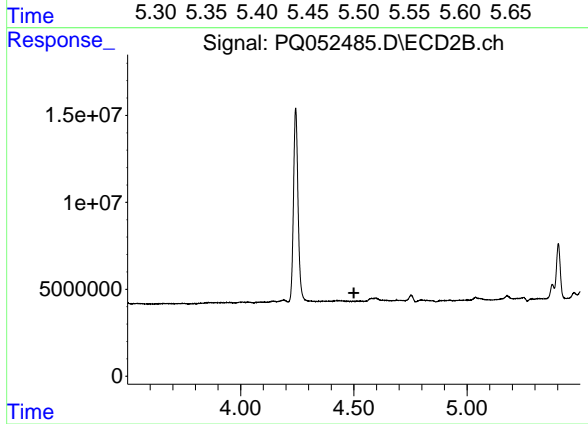
#7 AR-1016-5

R.T.: 5.997 min
 Delta R.T.: 0.000 min
 Response: 6537952
 Conc: 26.92 ng/ml



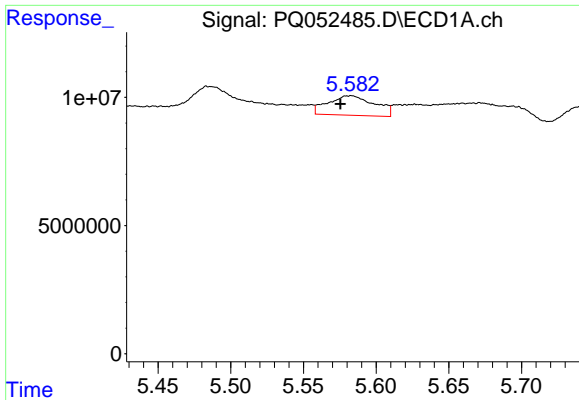
#8 AR-1221-1

R.T.: 5.483 min
 Delta R.T.: 0.008 min
 Response: 23281495
 Conc: 93.29 ng/ml



#8 AR-1221-1

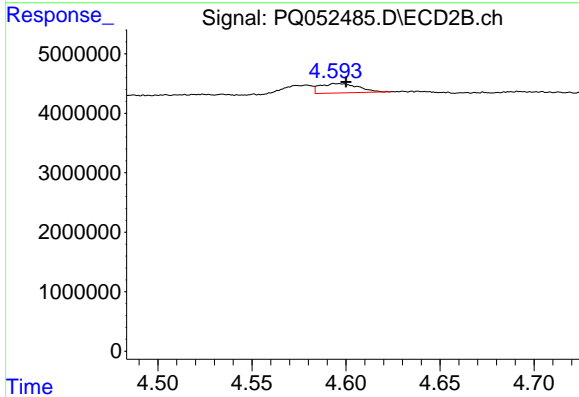
R.T.: 0.000 min
 Exp R.T. : 4.500 min
 Response: 0
 Conc: N.D.



#9 AR-1221-2

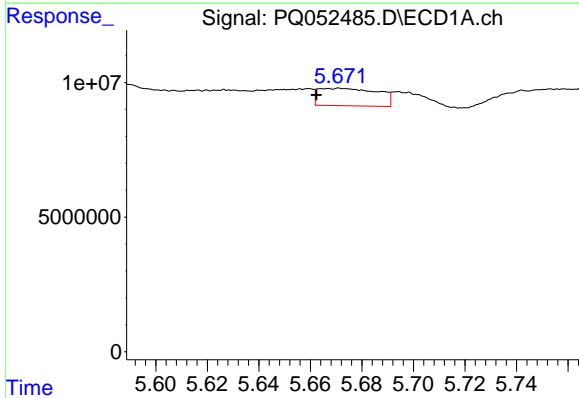
R.T.: 5.583 min
 Delta R.T.: 0.008 min
 Response: 16982682
 Conc: 93.76 ng/ml

Instrument :
 ECD_Q
 ClientSampleId :



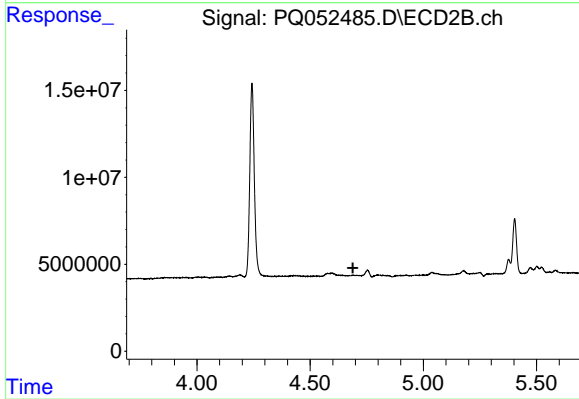
#9 AR-1221-2

R.T.: 4.594 min
 Delta R.T.: -0.006 min
 Response: 2238859
 Conc: 33.71 ng/ml



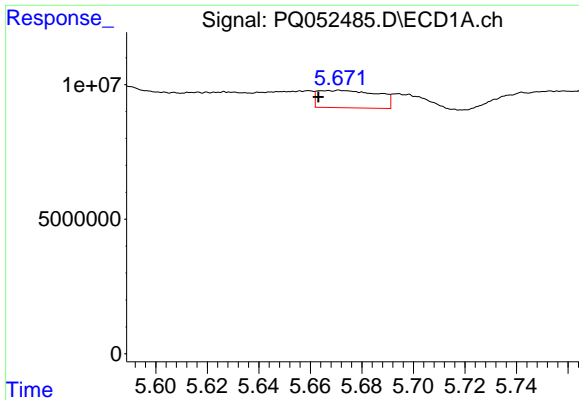
#10 AR-1221-3

R.T.: 5.671 min
 Delta R.T.: 0.009 min
 Response: 10440941
 Conc: 18.12 ng/ml



#10 AR-1221-3

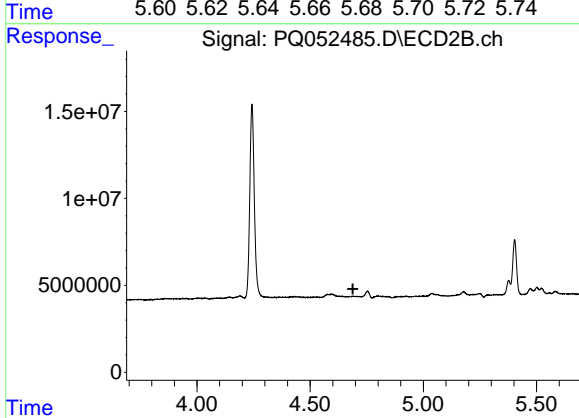
R.T.: 0.000 min
 Exp R.T. : 4.689 min
 Response: 0
 Conc: N.D.



#11 AR-1232-1

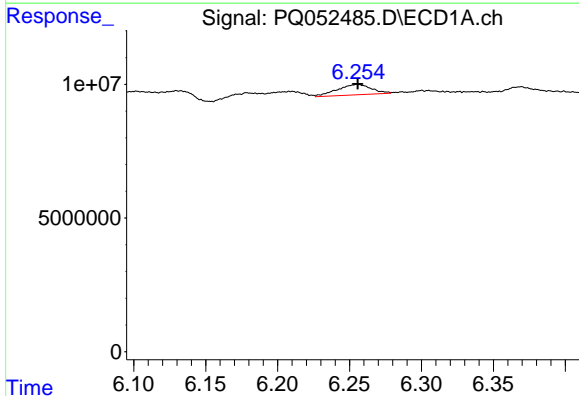
R.T.: 5.671 min
 Delta R.T.: 0.008 min
 Response: 10440941
 Conc: 21.73 ng/ml

Instrument :
 ECD_Q
 ClientSampled :



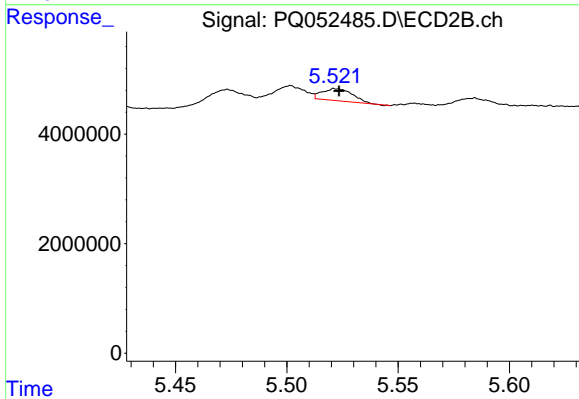
#11 AR-1232-1

R.T.: 0.000 min
 Exp R.T. : 4.689 min
 Response: 0
 Conc: N.D.



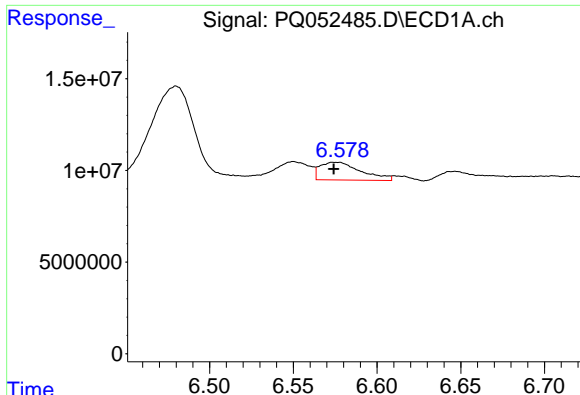
#12 AR-1232-2

R.T.: 6.255 min
 Delta R.T.: 0.000 min
 Response: 6484004
 Conc: 26.21 ng/ml



#12 AR-1232-2

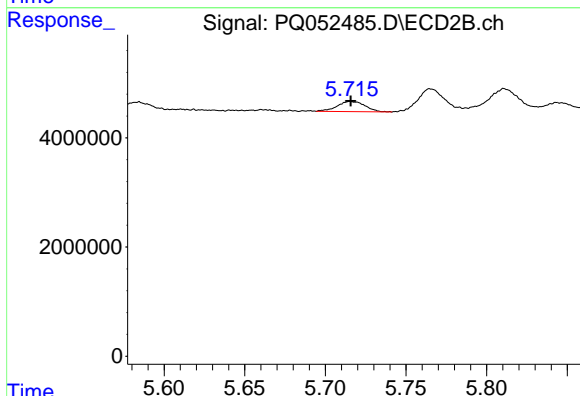
R.T.: 5.521 min
 Delta R.T.: -0.002 min
 Response: 2104937
 Conc: 10.89 ng/ml



#13 AR-1232-3

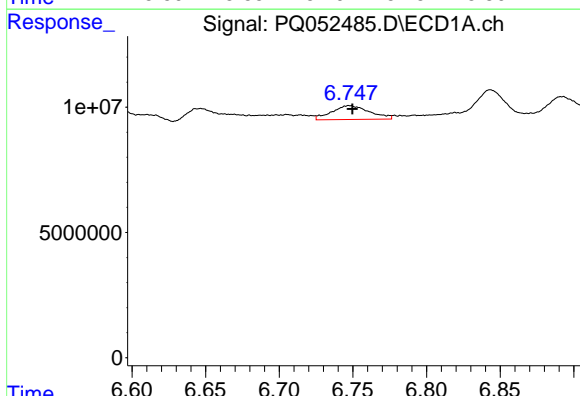
R.T.: 6.578 min
 Delta R.T.: 0.003 min
 Response: 16556015
 Conc: 31.39 ng/ml

Instrument :
 ECD_Q
 ClientSampleId :



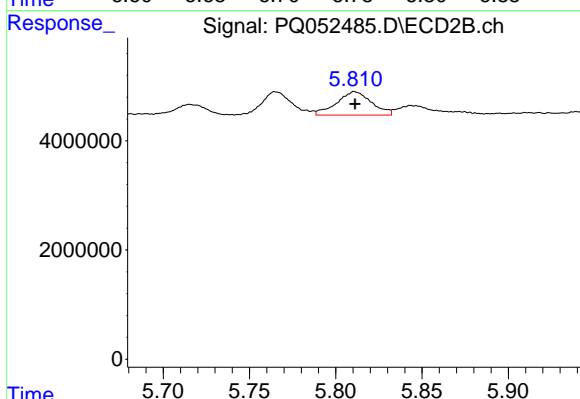
#13 AR-1232-3

R.T.: 5.715 min
 Delta R.T.: 0.000 min
 Response: 2214818
 Conc: 22.90 ng/ml



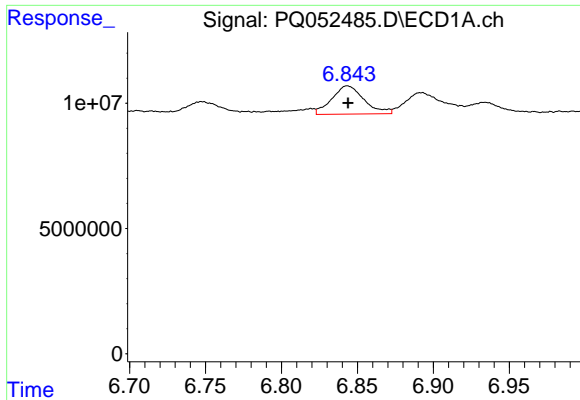
#14 AR-1232-4

R.T.: 6.747 min
 Delta R.T.: -0.002 min
 Response: 9997844
 Conc: 38.81 ng/ml



#14 AR-1232-4

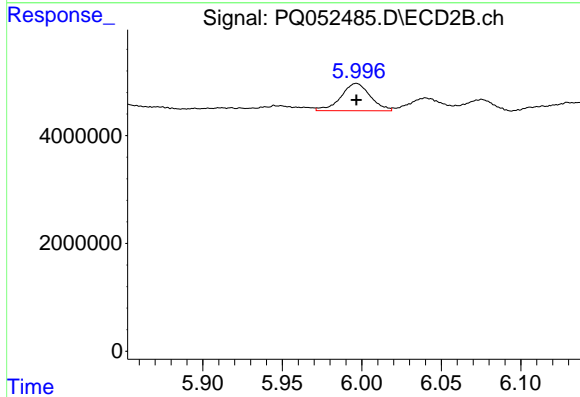
R.T.: 5.811 min
 Delta R.T.: 0.000 min
 Response: 6036353
 Conc: 74.83 ng/ml



#15 AR-1232-5

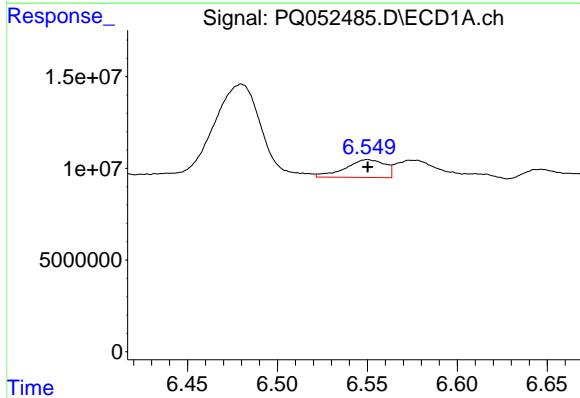
R.T.: 6.843 min
 Delta R.T.: 0.000 min
 Response: 16587451
 Conc: 92.10 ng/ml

Instrument :
 ECD_Q
 ClientSampleId :



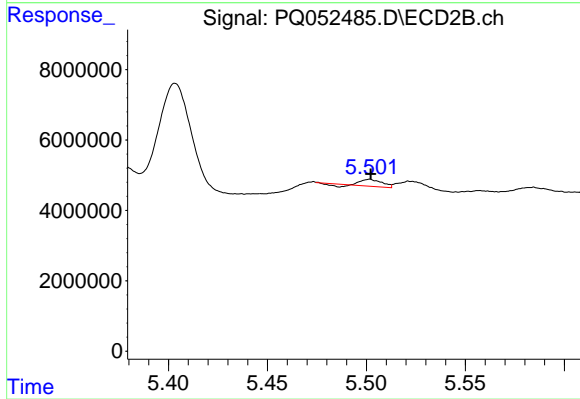
#15 AR-1232-5

R.T.: 5.997 min
 Delta R.T.: 0.000 min
 Response: 6537952
 Conc: 72.40 ng/ml



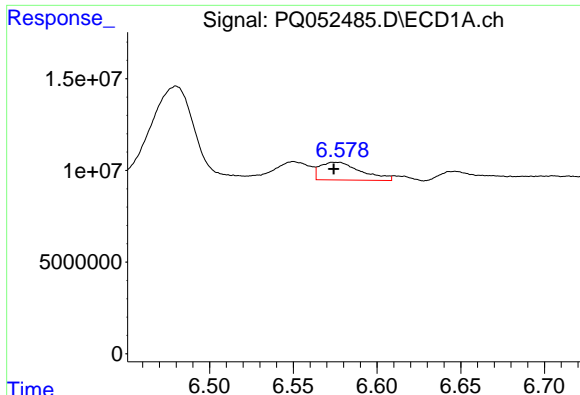
#16 AR-1242-1

R.T.: 6.550 min
 Delta R.T.: 0.000 min
 Response: 14971703
 Conc: 23.12 ng/ml



#16 AR-1242-1

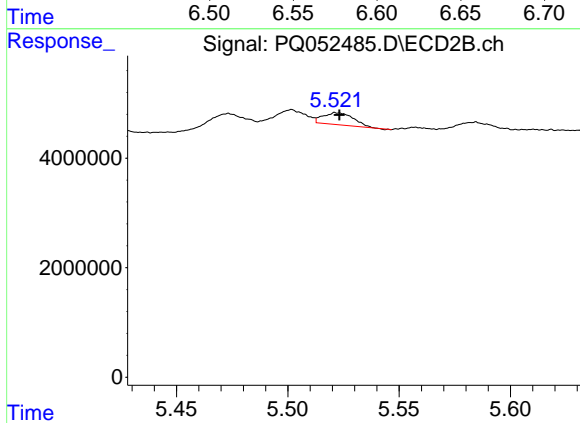
R.T.: 5.502 min
 Delta R.T.: 0.000 min
 Response: 1235232
 Conc: 5.02 ng/ml



#17 AR-1242-2

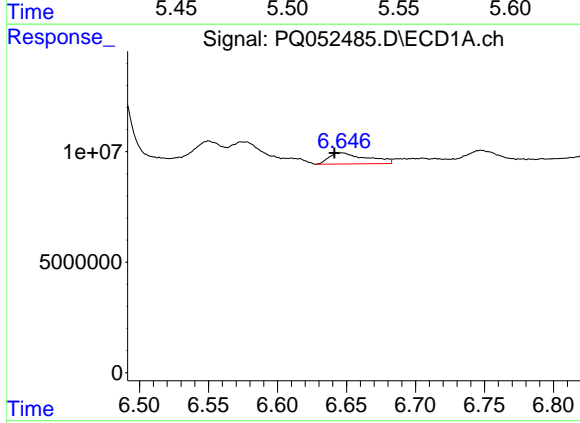
R.T.: 6.578 min
 Delta R.T.: 0.004 min
 Response: 16556015
 Conc: 17.27 ng/ml

Instrument :
 ECD_Q
 ClientSampleId :



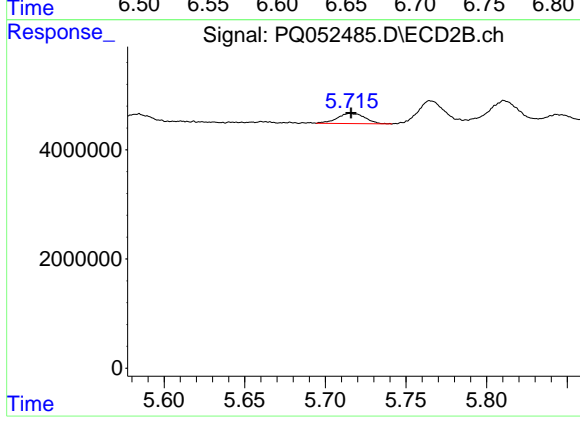
#17 AR-1242-2

R.T.: 5.521 min
 Delta R.T.: -0.002 min
 Response: 2104937
 Conc: 5.99 ng/ml



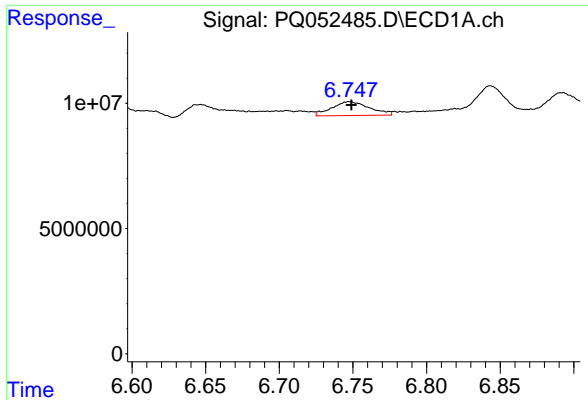
#18 AR-1242-3

R.T.: 6.647 min
 Delta R.T.: 0.006 min
 Response: 9595125
 Conc: 16.74 ng/ml



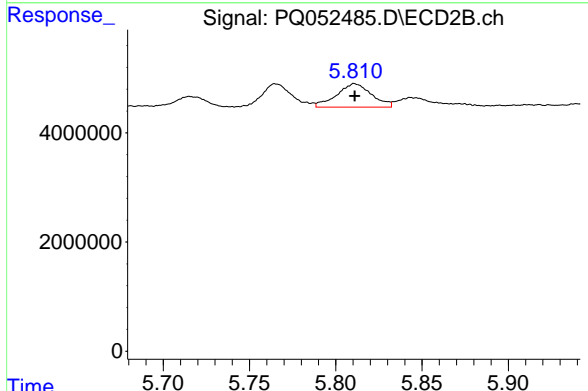
#18 AR-1242-3

R.T.: 5.715 min
 Delta R.T.: 0.000 min
 Response: 2214818
 Conc: 12.02 ng/ml

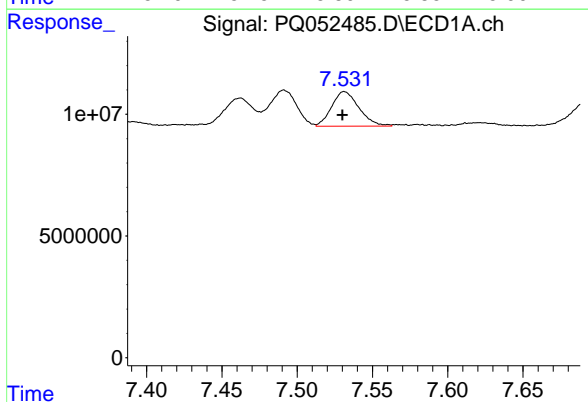


#19 AR-1242-4
 R.T.: 6.747 min
 Delta R.T.: -0.002 min
 Response: 9997844
 Conc: 21.05 ng/ml

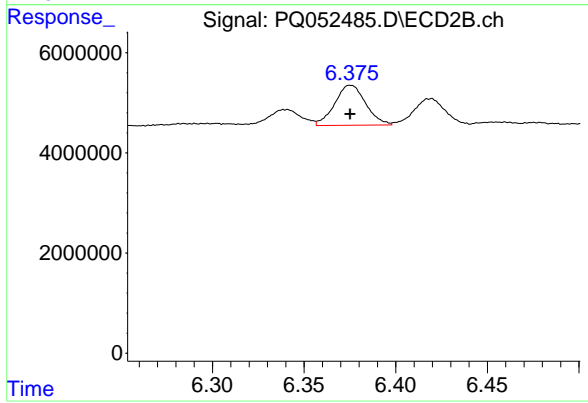
Instrument :
 ECD_Q
 ClientSampleId :



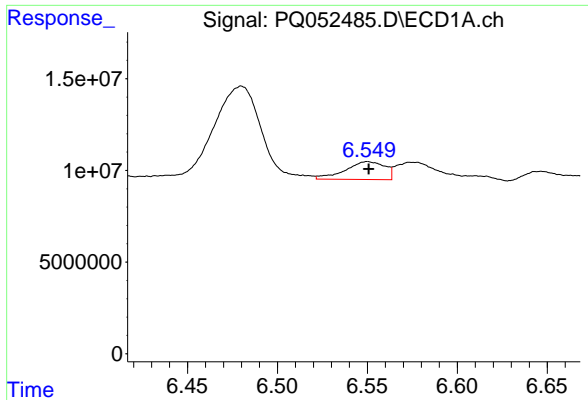
#19 AR-1242-4
 R.T.: 5.811 min
 Delta R.T.: 0.000 min
 Response: 6036353
 Conc: 35.82 ng/ml



#20 AR-1242-5
 R.T.: 7.531 min
 Delta R.T.: 0.001 min
 Response: 17913159
 Conc: 34.02 ng/ml

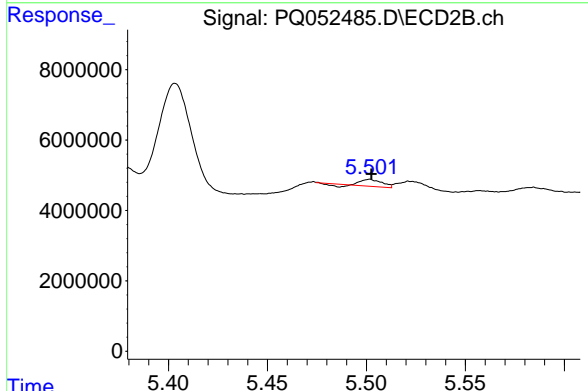


#20 AR-1242-5
 R.T.: 6.375 min
 Delta R.T.: 0.000 min
 Response: 9392741
 Conc: 39.50 ng/ml

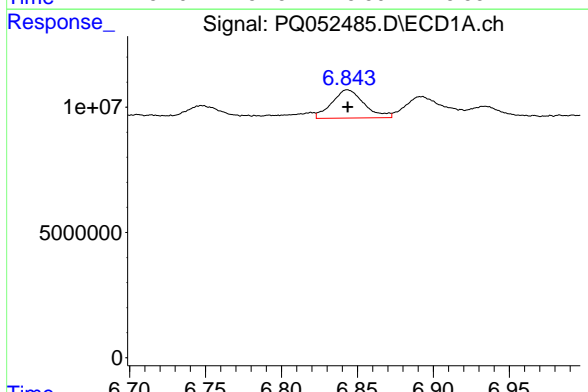


#21 AR-1248-1
 R.T.: 6.550 min
 Delta R.T.: 0.000 min
 Response: 14971703
 Conc: 30.94 ng/ml

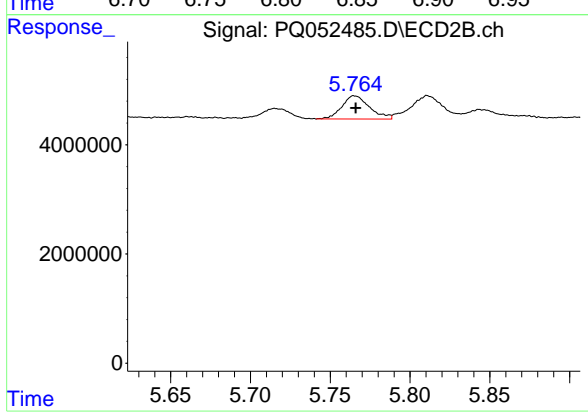
Instrument :
 ECD_Q
 ClientSampled :



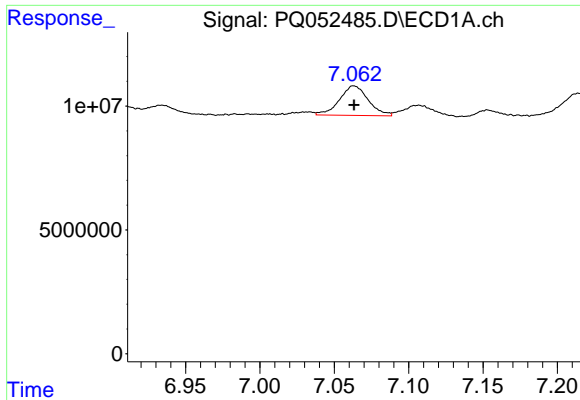
#21 AR-1248-1
 R.T.: 5.502 min
 Delta R.T.: 0.000 min
 Response: 1235232
 Conc: 6.66 ng/ml



#22 AR-1248-2
 R.T.: 6.843 min
 Delta R.T.: 0.000 min
 Response: 16587451
 Conc: 24.82 ng/ml



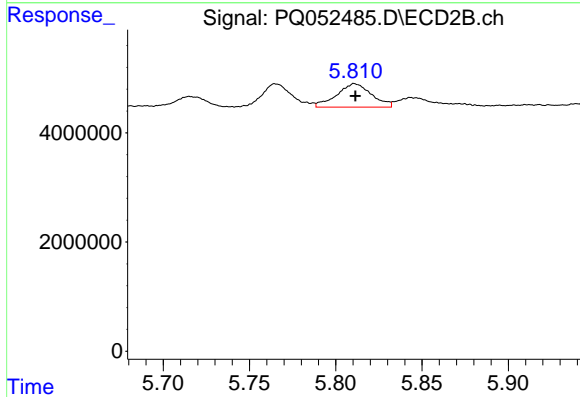
#22 AR-1248-2
 R.T.: 5.765 min
 Delta R.T.: -0.001 min
 Response: 5095931
 Conc: 20.58 ng/ml



#23 AR-1248-3

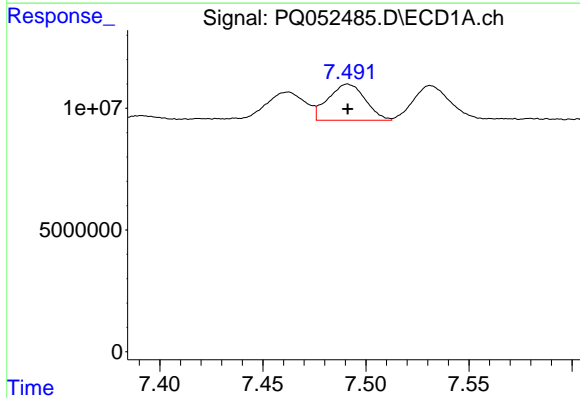
R.T.: 7.063 min
 Delta R.T.: 0.000 min
 Response: 16124682
 Conc: 20.83 ng/ml

Instrument :
 ECD_Q
 ClientSampleId :



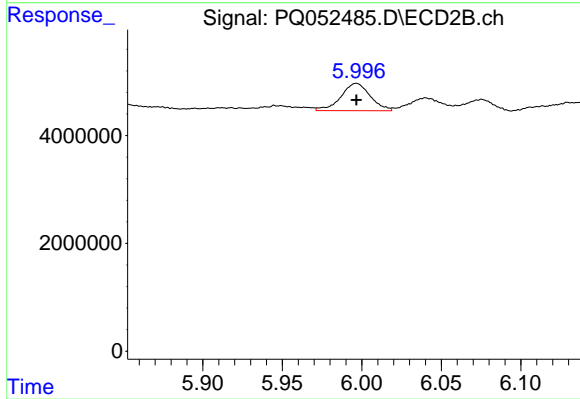
#23 AR-1248-3

R.T.: 5.811 min
 Delta R.T.: 0.000 min
 Response: 6036353
 Conc: 23.50 ng/ml



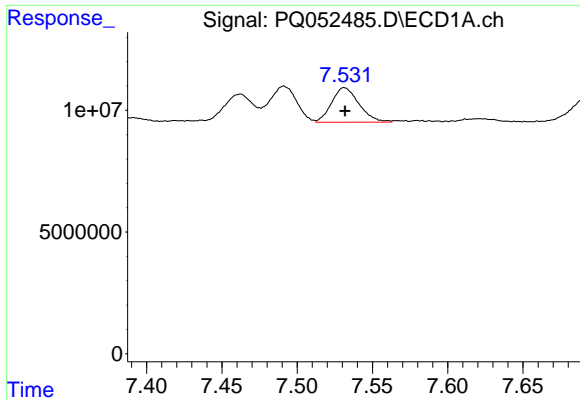
#24 AR-1248-4

R.T.: 7.491 min
 Delta R.T.: 0.000 min
 Response: 18588564
 Conc: 20.19 ng/ml



#24 AR-1248-4

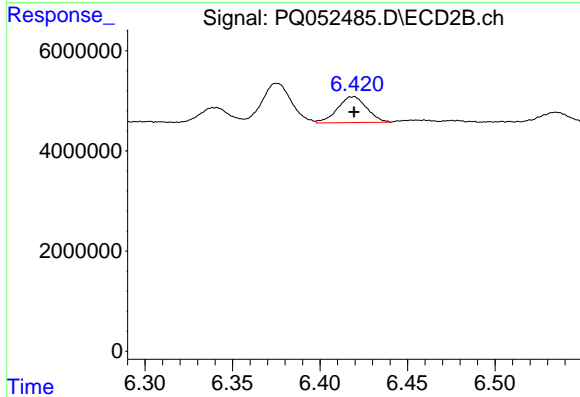
R.T.: 5.997 min
 Delta R.T.: 0.000 min
 Response: 6537952
 Conc: 20.98 ng/ml



#25 AR-1248-5

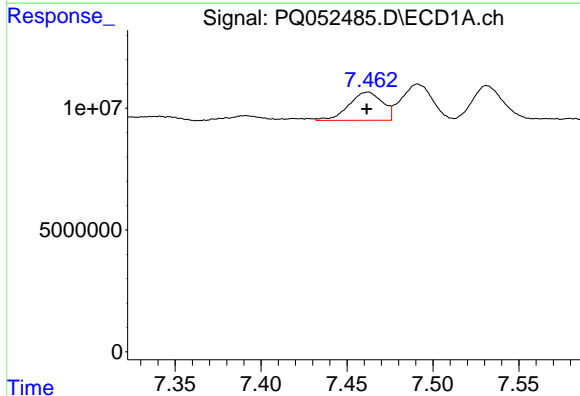
R.T.: 7.531 min
 Delta R.T.: 0.000 min
 Response: 17913159
 Conc: 19.60 ng/ml

Instrument :
 ECD_Q
 ClientSampleId :



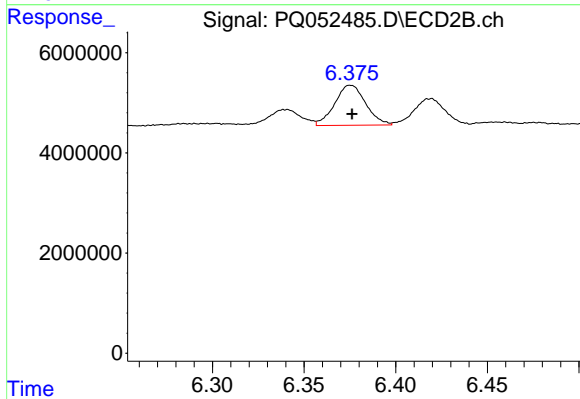
#25 AR-1248-5

R.T.: 6.419 min
 Delta R.T.: 0.000 min
 Response: 6018271
 Conc: 17.87 ng/ml



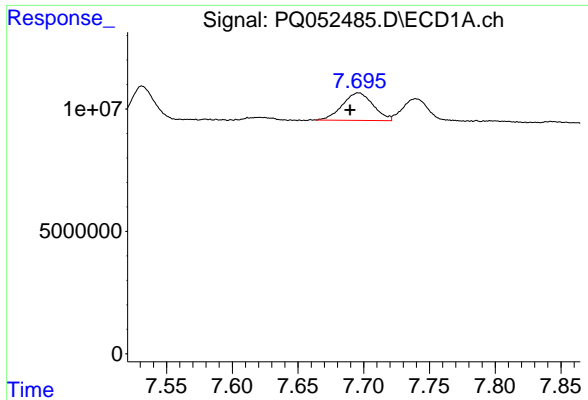
#26 AR-1254-1

R.T.: 7.462 min
 Delta R.T.: 0.001 min
 Response: 15765979
 Conc: 17.53 ng/ml



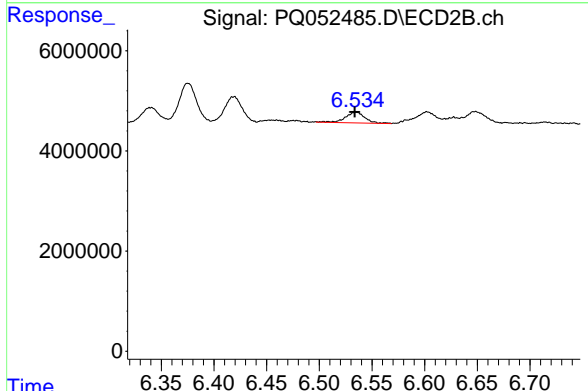
#26 AR-1254-1

R.T.: 6.375 min
 Delta R.T.: 0.000 min
 Response: 9392741
 Conc: 18.23 ng/ml

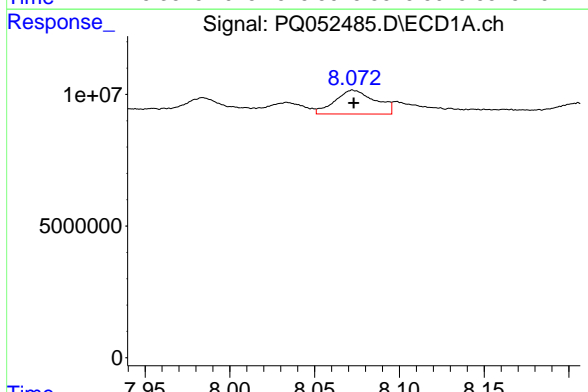


#27 AR-1254-2
 R.T.: 7.696 min
 Delta R.T.: 0.006 min
 Response: 18392387
 Conc: 13.02 ng/ml

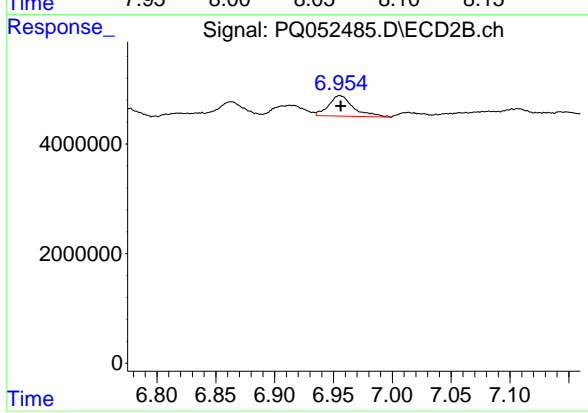
Instrument :
 ECD_Q
 ClientSampleId :



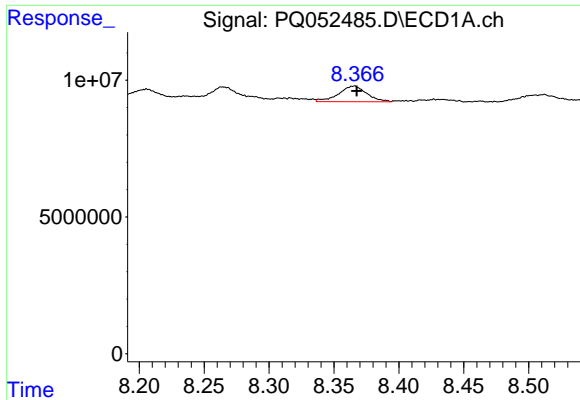
#27 AR-1254-2
 R.T.: 6.535 min
 Delta R.T.: 0.001 min
 Response: 2782648
 Conc: 6.22 ng/ml



#28 AR-1254-3
 R.T.: 8.072 min
 Delta R.T.: 0.000 min
 Response: 15000155
 Conc: 9.66 ng/ml

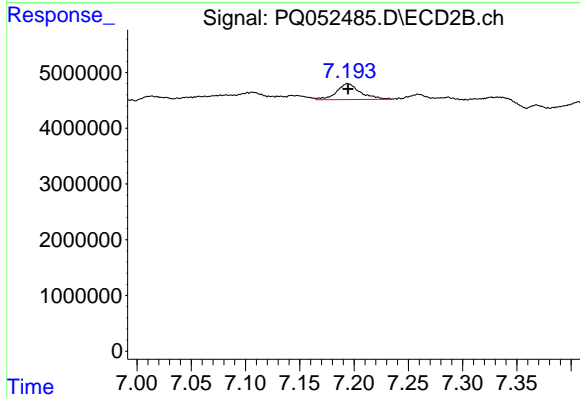


#28 AR-1254-3
 R.T.: 6.955 min
 Delta R.T.: 0.000 min
 Response: 5483323
 Conc: 7.42 ng/ml

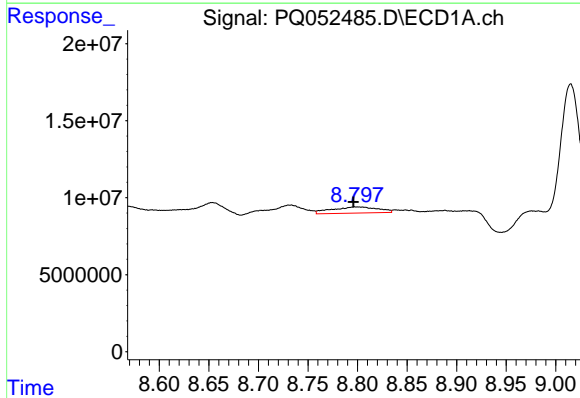


#29 AR-1254-4
 R.T.: 8.366 min
 Delta R.T.: -0.001 min
 Response: 8682087
 Conc: 7.58 ng/ml

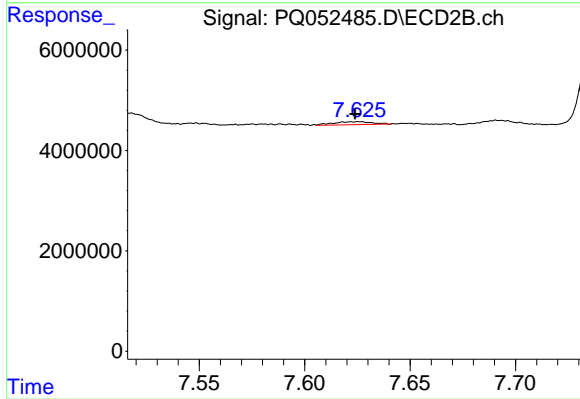
Instrument :
 ECD_Q
 ClientSampleId :



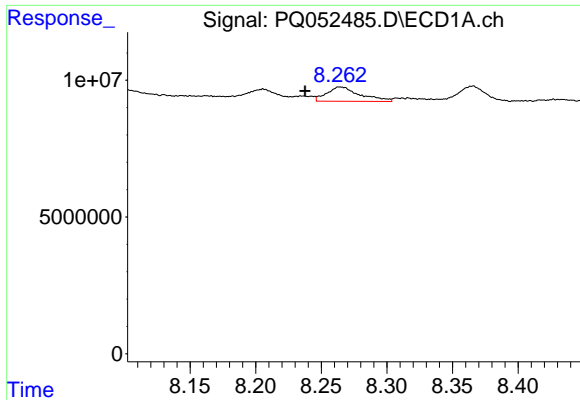
#29 AR-1254-4
 R.T.: 7.194 min
 Delta R.T.: 0.000 min
 Response: 4307385
 Conc: 8.63 ng/ml



#30 AR-1254-5
 R.T.: 8.797 min
 Delta R.T.: 0.002 min
 Response: 12957876
 Conc: 10.66 ng/ml



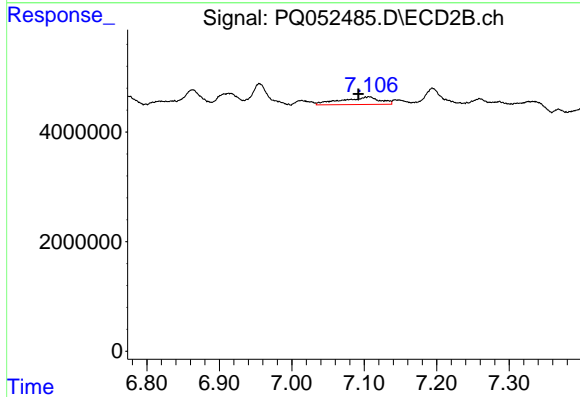
#30 AR-1254-5
 R.T.: 7.626 min
 Delta R.T.: 0.002 min
 Response: 726142
 Conc: 1.06 ng/ml



#31 AR-1260-1

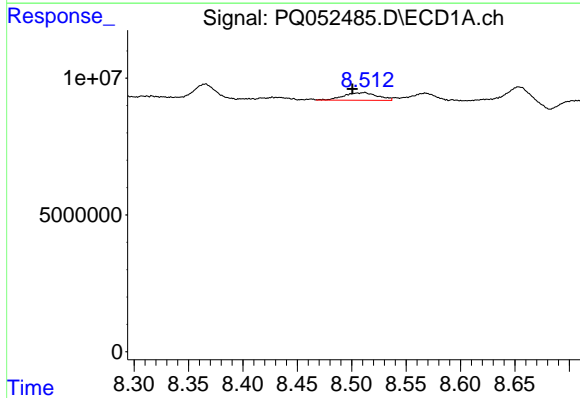
R.T.: 8.263 min
 Delta R.T.: 0.026 min
 Response: 9322247
 Conc: 8.94 ng/ml

Instrument :
 ECD_Q
 ClientSampleId :



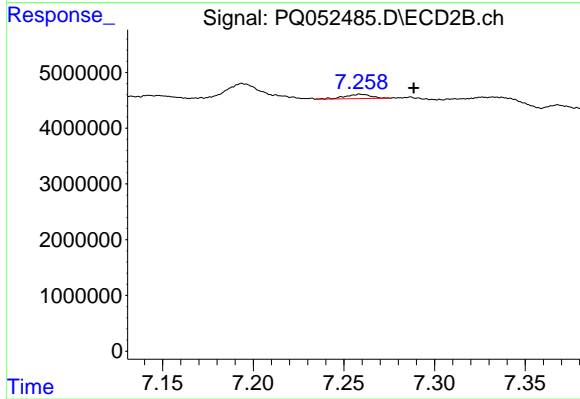
#31 AR-1260-1

R.T.: 7.107 min
 Delta R.T.: 0.015 min
 Response: 5087615
 Conc: 10.91 ng/ml



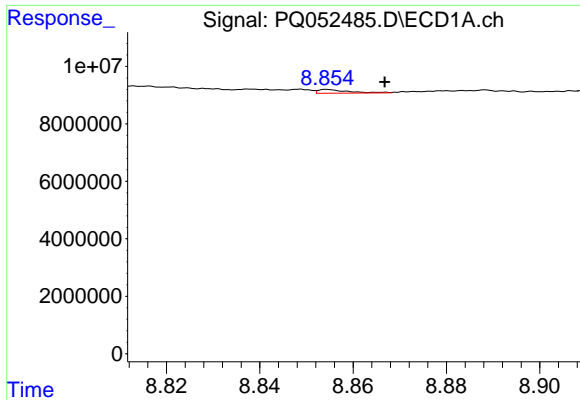
#32 AR-1260-2

R.T.: 8.512 min
 Delta R.T.: 0.012 min
 Response: 6003870
 Conc: 4.74 ng/ml



#32 AR-1260-2

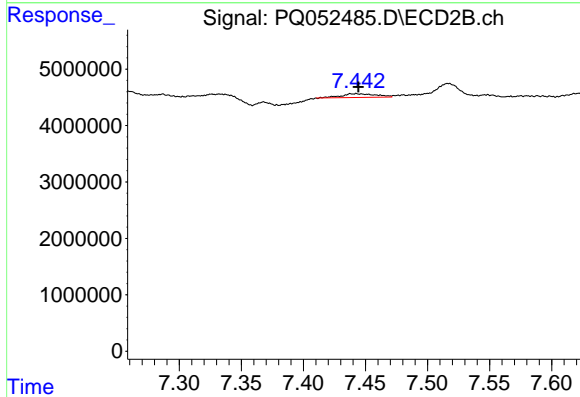
R.T.: 7.259 min
 Delta R.T.: -0.029 min
 Response: 766870
 Conc: 1.20 ng/ml



#33 AR-1260-3

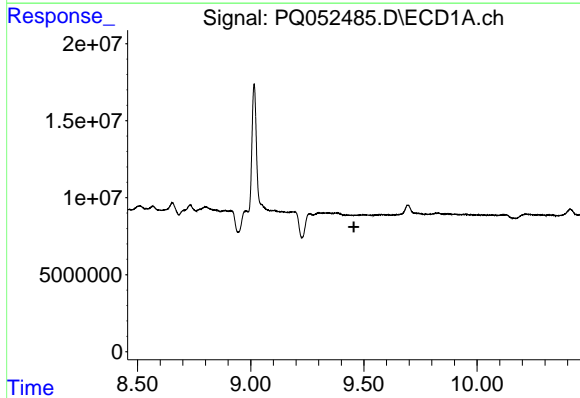
R.T.: 8.855 min
 Delta R.T.: -0.012 min
 Response: 568596
 Conc: 0.60 ng/ml

Instrument :
 ECD_Q
 ClientSampleId :



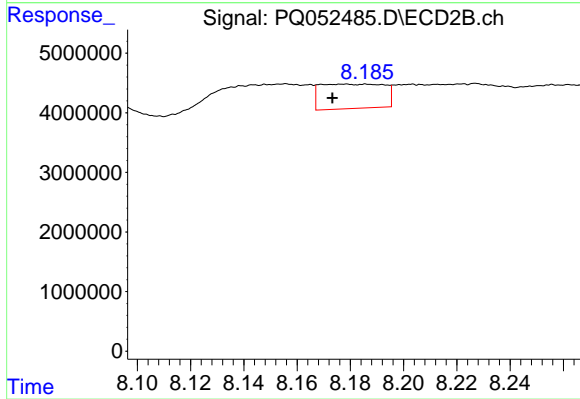
#33 AR-1260-3

R.T.: 7.443 min
 Delta R.T.: -0.002 min
 Response: 1310788
 Conc: 2.38 ng/ml



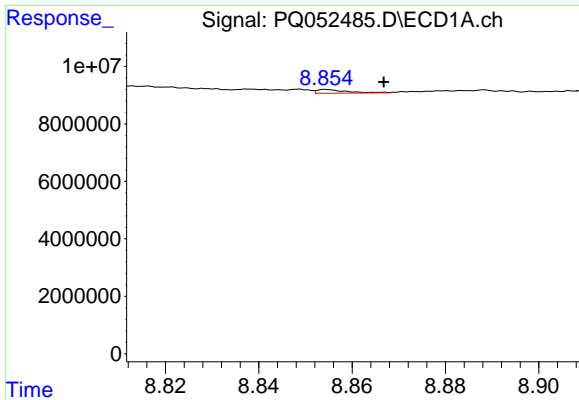
#35 AR-1260-5

R.T.: 0.000 min
 Exp R.T. : 9.456 min
 Response: 0
 Conc: N.D.



#35 AR-1260-5

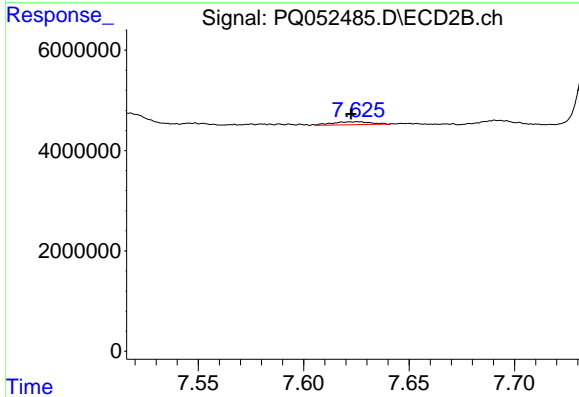
R.T.: 8.186 min
 Delta R.T.: 0.013 min
 Response: 6827001
 Conc: 5.19 ng/ml



#36 AR-1262-1

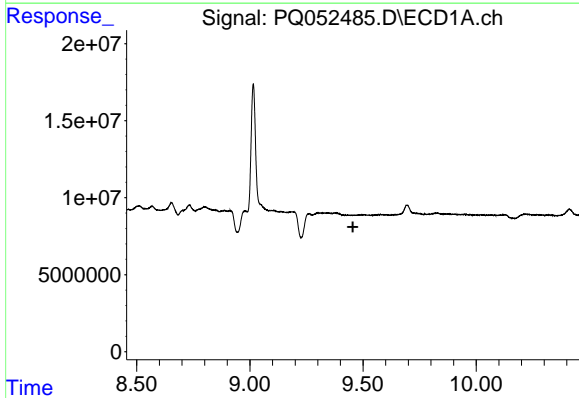
R.T.: 8.855 min
 Delta R.T.: -0.012 min
 Response: 568596
 Conc: 0.40 ng/ml

Instrument :
 ECD_Q
 ClientSampleId :



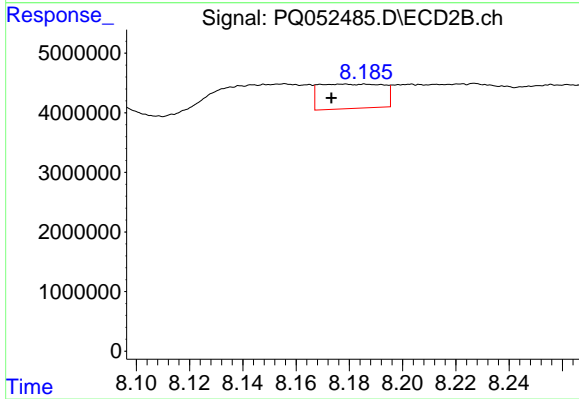
#36 AR-1262-1

R.T.: 7.626 min
 Delta R.T.: 0.003 min
 Response: 726142
 Conc: 2.02 ng/ml



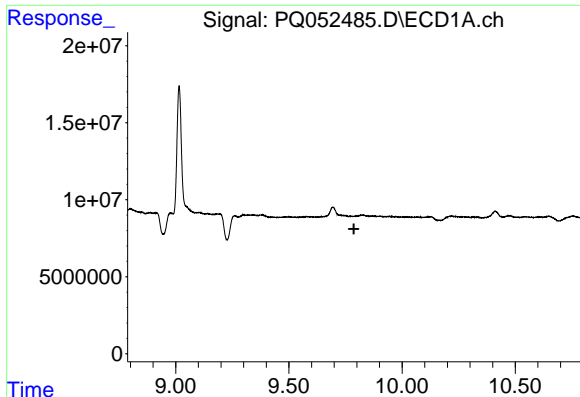
#37 AR-1262-2

R.T.: 0.000 min
 Exp R.T. : 9.455 min
 Response: 0
 Conc: N.D.



#37 AR-1262-2

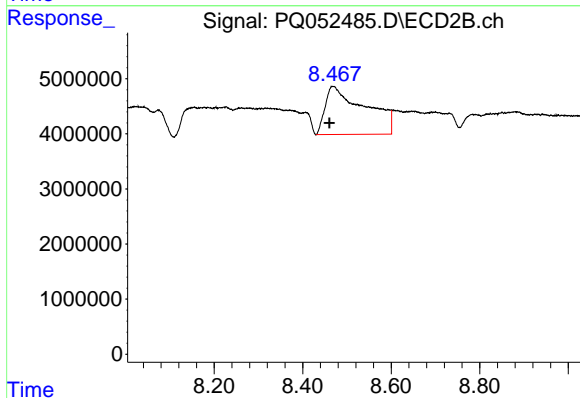
R.T.: 8.186 min
 Delta R.T.: 0.013 min
 Response: 6827001
 Conc: 4.62 ng/ml



#38 AR-1262-3

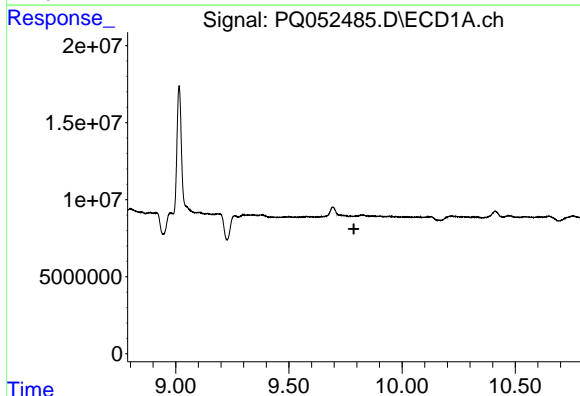
R.T.: 0.000 min
 Exp R.T. : 9.787 min
 Response: 0
 Conc: N.D.

Instrument :
 ECD_Q
 ClientSampleId :



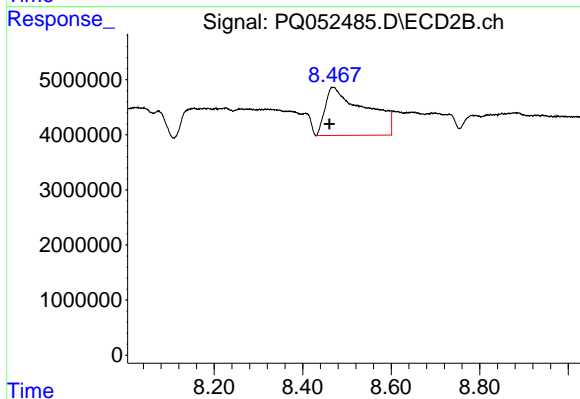
#38 AR-1262-3

R.T.: 8.468 min
 Delta R.T.: 0.008 min
 Response: 54844583
 Conc: 94.98 ng/ml



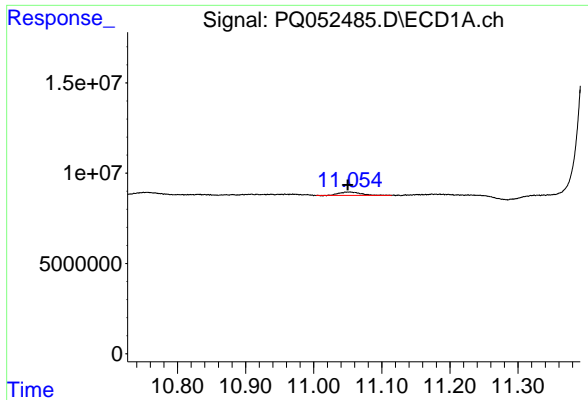
#41 AR-1268-1

R.T.: 0.000 min
 Exp R.T. : 9.787 min
 Response: 0
 Conc: N.D.



#41 AR-1268-1

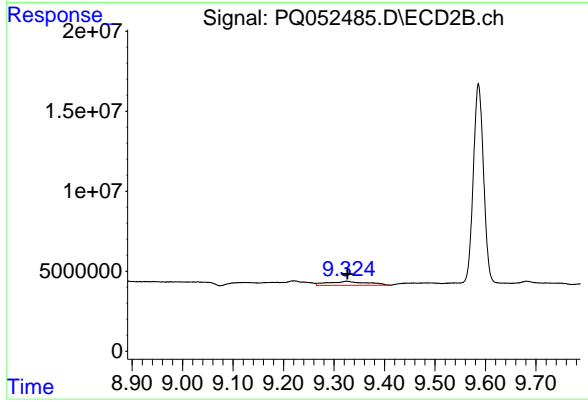
R.T.: 8.468 min
 Delta R.T.: 0.007 min
 Response: 54844583
 Conc: 32.07 ng/ml



#45 AR-1268-5

R.T.: 11.053 min
Delta R.T.: 0.004 min
Response: 4263355
Conc: 0.47 ng/ml

Instrument :
ECD_Q
ClientSampleId :



#45 AR-1268-5

R.T.: 9.325 min
Delta R.T.: -0.002 min
Response: 13216934
Conc: 3.41 ng/ml