

Data Path : Z:\pestpcbsrv\HPCHEM1\ECD_Q\Data\PQ031021\
 Data File : PQ052525.D
 Signal(s) : Signal #1: ECD1A.ch Signal #2: ECD2B.ch
 Acq On : 10 Mar 2021 11:11
 Operator : DD\AJ
 Sample : AR1660CCC500
 Misc :
 ALS Vial : 5 Sample Multiplier: 1

Instrument :
 ECD_Q
 ClientSampled :

Integration File signal 1: autoint1.e
 Integration File signal 2: autoint2.e
 Quant Time: Mar 11 04:57:20 2021
 Quant Method : Z:\pestpcbsrv\HPCHEM1\ECD_Q\Method\PQ031021.M
 Quant Title : GC EXTRACTABLES
 QLast Update : Thu Mar 11 04:11:59 2021
 Response via : Initial Calibration
 Integrator: ChemStation

Volume Inj. : 2 µl
 Signal #1 Phase : ZB-MR1 Signal #2 Phase: ZB-MR2
 Signal #1 Info : 30Mx0.32mmx 0.50µ Signal #2 Info : 30M x 0.32mm x 0.25µm

Compound	RT#1	RT#2	Resp#1	Resp#2	ng/ml	ng/ml
System Monitoring Compounds						
1) SA Tetrachlo...	5.228	4.242	1297.0E6	458.2E6	51.062	50.365
2) SA Decachlor...	11.416	9.585	1335.6E6	520.1E6	53.576	53.622
Target Compounds						
3) L1 AR-1016-1	6.552	5.503	445.0E6	169.3E6	525.683	523.800
4) L1 AR-1016-2	6.577	5.523	663.7E6	237.9E6	523.936	503.510
5) L1 AR-1016-3	6.644	5.715	401.5E6	124.4E6	537.175	514.747
6) L1 AR-1016-4	6.752	5.766	333.8E6	95407625	531.970	518.686
7) L1 AR-1016-5	7.065	5.996	320.5E6	106.3E6	549.294	437.834
8) L2 AR-1221-1	5.474	4.499	33662712	12495838	134.883	138.427
9) L2 AR-1221-2	5.579	4.600	52912183	18932649	292.110	285.048
10) L2 AR-1221-3	5.666	4.689	201.3E6	73989697	349.434	333.946
11) L3 AR-1232-1	5.666	4.689	201.3E6	73989697	418.873	412.555
12) L3 AR-1232-2	6.258	5.523	297.7E6	237.9E6	1203.794	1230.320
13) L3 AR-1232-3	6.577	5.715	663.7E6	124.4E6	1258.347	1286.096
14) L3 AR-1232-4	6.752	5.811	333.8E6	116.5E6	1295.633	1444.446
15) L3 AR-1232-5	6.846	5.996	278.4E6	106.3E6	1545.890	1177.642
16) L4 AR-1242-1	6.552	5.503	445.0E6	169.3E6	687.352	687.747
17) L4 AR-1242-2	6.577	5.523	663.7E6	237.9E6	692.366	677.199
18) L4 AR-1242-3	6.644	5.715	401.5E6	124.4E6	700.237	675.273
19) L4 AR-1242-4	6.752	5.811	333.8E6	116.5E6	702.774	691.459
20) L4 AR-1242-5	7.533	6.375	106.6E6	100.6E6	202.512	422.945 #
21) L5 AR-1248-1	6.552	5.503	445.0E6	169.3E6	919.608	912.644
22) L5 AR-1248-2	6.846	5.766	278.4E6	95407625	416.558	385.299
23) L5 AR-1248-3	7.065	5.811	320.5E6	116.5E6	414.016	453.682
24) L5 AR-1248-4	7.493	5.996	82158303	106.3E6	89.254	341.204 #
25) L5 AR-1248-5	7.533	6.419	106.6E6	19674151	116.687	58.433 #
26) L6 AR-1254-1	7.463	6.375	260.9E6	100.6E6	290.041	195.234 #
27) L6 AR-1254-2	7.688	6.534	281.5E6	98167120	199.245	219.377
28) L6 AR-1254-3	8.074	6.973f	172.3E6	186.2E6	111.005	251.768 #
29) L6 AR-1254-4	8.368	7.194	122.6E6	25552230	106.957	51.166 #
30) L6 AR-1254-5	8.796	7.623	816.0E6	363.1E6	671.025	531.775
31) L7 AR-1260-1	8.239	7.092	584.1E6	252.0E6	560.215	540.608
32) L7 AR-1260-2	8.503	7.288	710.6E6	352.7E6	560.622	550.462
33) L7 AR-1260-3	8.868	7.444	523.9E6	301.2E6	551.591	545.924
34) L7 AR-1260-4	9.112	7.927	600.3E6	261.1E6	529.210	550.899
35) L7 AR-1260-5	9.456	8.173	1259.7E6	730.8E6	526.543	555.173
36) L8 AR-1262-1	8.868	7.623	523.9E6	363.1E6	373.304	1010.703 #
37) L8 AR-1262-2	9.456	8.173	1259.7E6	730.8E6	459.812	494.199
38) L8 AR-1262-3	9.791	8.460	288.3E6	159.0E6	244.155	275.377
39) L8 AR-1262-4	9.872	8.523	518.6E6	489.6E6	375.682	476.133 #
40) L8 AR-1262-5	10.604	9.025	387.7E6	176.9E6	389.710	374.977
41) L9 AR-1268-1	9.791	8.460	288.3E6	159.0E6	92.000	92.990

Data Path : Z:\pestpcbsrv\HPCHEM1\ECD_Q\Data\PQ031021\
 Data File : PQ052525.D
 Signal(s) : Signal #1: ECD1A.ch Signal #2: ECD2B.ch
 Acq On : 10 Mar 2021 11:11
 Operator : DD\AJ
 Sample : AR1660CCC500
 Misc :
 ALS Vial : 5 Sample Multiplier: 1

Instrument :
 ECD_Q
 ClientSampleId :

Integration File signal 1: autoint1.e
 Integration File signal 2: autoint2.e
 Quant Time: Mar 11 04:57:20 2021
 Quant Method : Z:\pestpcbsrv\HPCHEM1\ECD_Q\Method\PQ031021.M
 Quant Title : GC EXTRACTABLES
 QLast Update : Thu Mar 11 04:11:59 2021
 Response via : Initial Calibration
 Integrator: ChemStation

Volume Inj. : 2 µl
 Signal #1 Phase : ZB-MR1 Signal #2 Phase: ZB-MR2
 Signal #1 Info : 30Mx0.32mmx 0.50µ Signal #2 Info : 30M x 0.32mm x 0.25µm

	Compound	RT#1	RT#2	Resp#1	Resp#2	ng/ml	ng/ml
42)	L9 AR-1268-2	9.872f	8.523	518.6E6	489.6E6	176.634	325.234 #
43)	L9 AR-1268-3	10.134	8.734	17779754	8415547	7.012	6.529
44)	L9 AR-1268-4	10.604	9.025	387.7E6	176.9E6	357.182	345.665
45)	L9 AR-1268-5	11.052	9.325	117.9E6	43656998	13.101	11.253

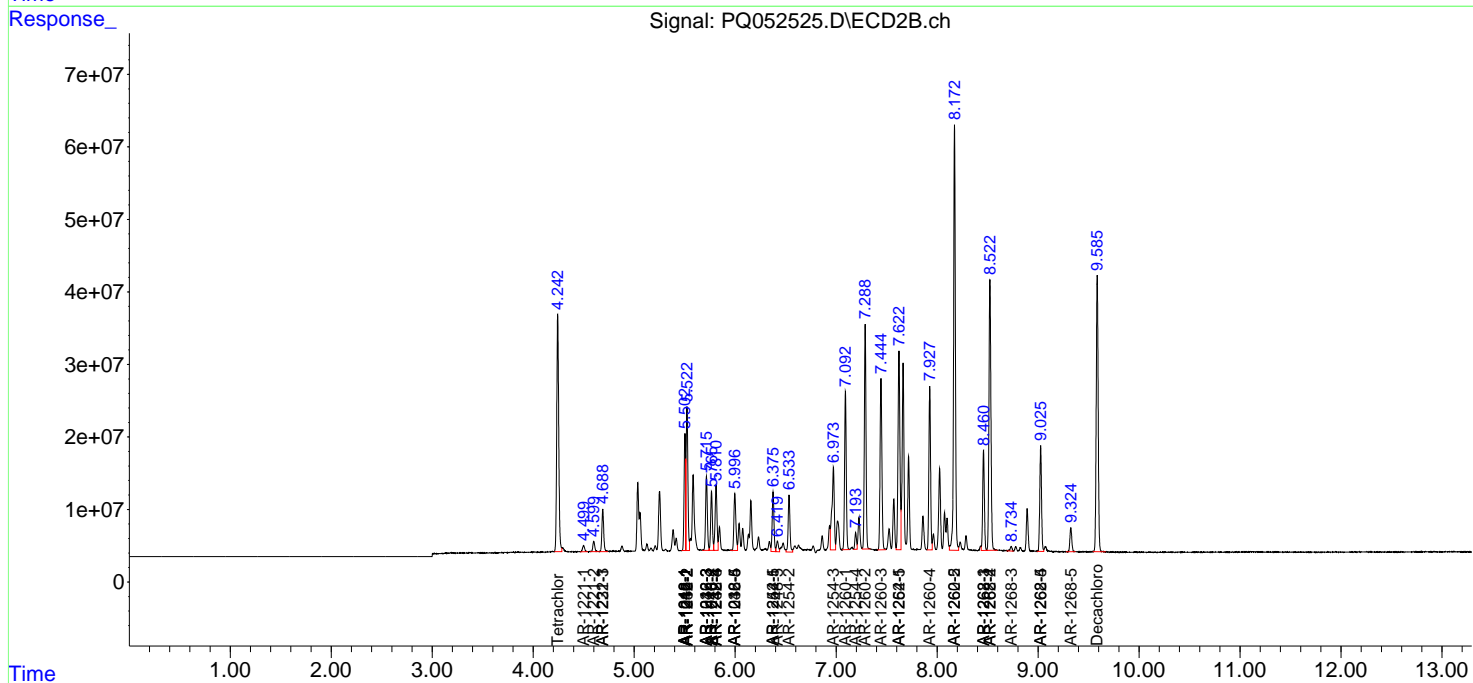
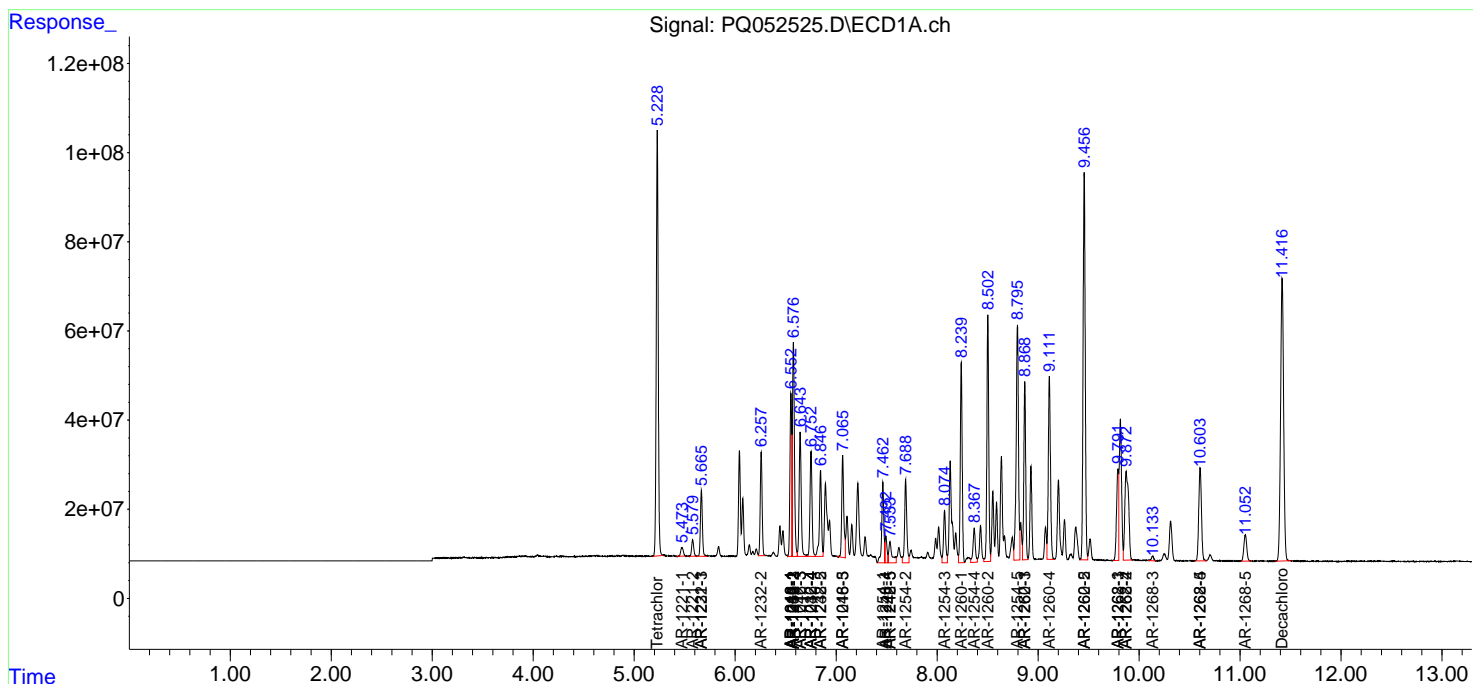
(f)=RT Delta > 1/2 Window (#)=Amounts differ by > 25% (m)=manual int.

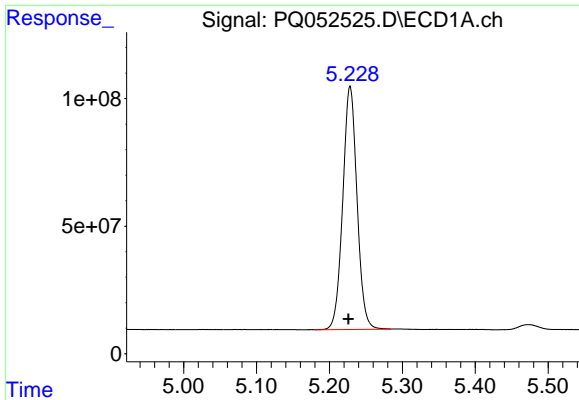
Data Path : Z:\pestpcbsrv\HPCHEM1\ECD_Q\Data\PQ031021\
 Data File : PQ052525.D
 Signal(s) : Signal #1: ECD1A.ch Signal #2: ECD2B.ch
 Acq On : 10 Mar 2021 11:11
 Operator : DD\AJ
 Sample : AR1660CCC500
 Misc :
 ALS Vial : 5 Sample Multiplier: 1

Instrument :
 ECD_Q
 ClientSampled :

Integration File signal 1: autoint1.e
 Integration File signal 2: autoint2.e
 Quant Time: Mar 11 04:57:20 2021
 Quant Method : Z:\pestpcbsrv\HPCHEM1\ECD_Q\Method\PQ031021.M
 Quant Title : GC EXTRACTABLES
 QLast Update : Thu Mar 11 04:11:59 2021
 Response via : Initial Calibration
 Integrator: ChemStation

Volume Inj. : 2 µl
 Signal #1 Phase : ZB-MR1 Signal #2 Phase: ZB-MR2
 Signal #1 Info : 30Mx0.32mmx 0.50µ Signal #2 Info : 30M x 0.32mm x 0.25µm

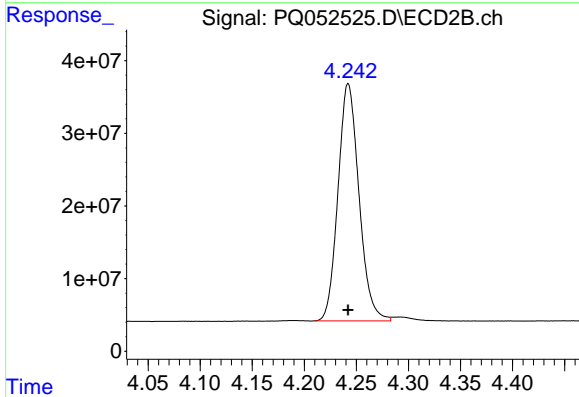




#1 Tetrachloro-m-xylene

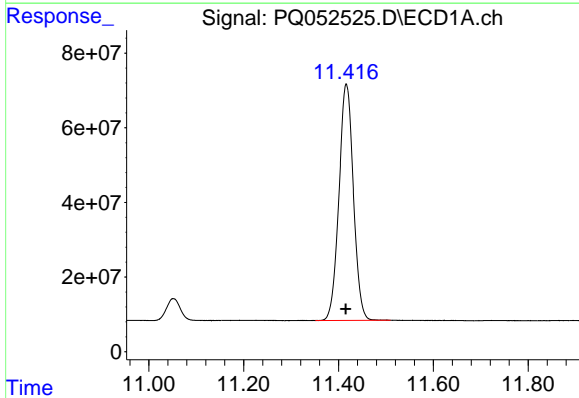
R.T.: 5.228 min
Delta R.T.: 0.002 min
Response: 1296975889
Conc: 51.06 ng/ml

Instrument :
ECD_Q
ClientSampleId :



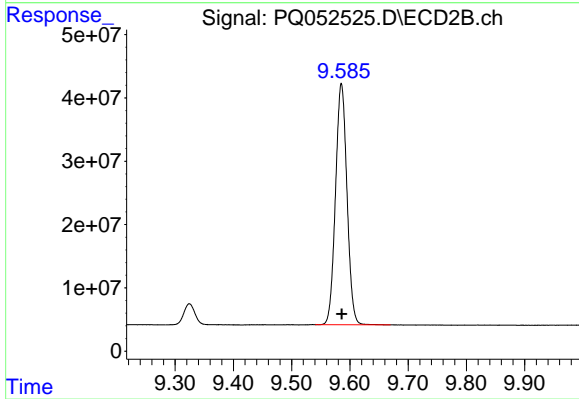
#1 Tetrachloro-m-xylene

R.T.: 4.242 min
Delta R.T.: 0.000 min
Response: 458153462
Conc: 50.37 ng/ml



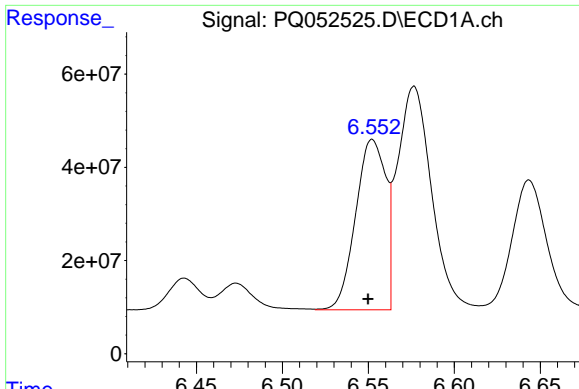
#2 Decachlorobiphenyl

R.T.: 11.416 min
Delta R.T.: 0.000 min
Response: 1335644166
Conc: 53.58 ng/ml



#2 Decachlorobiphenyl

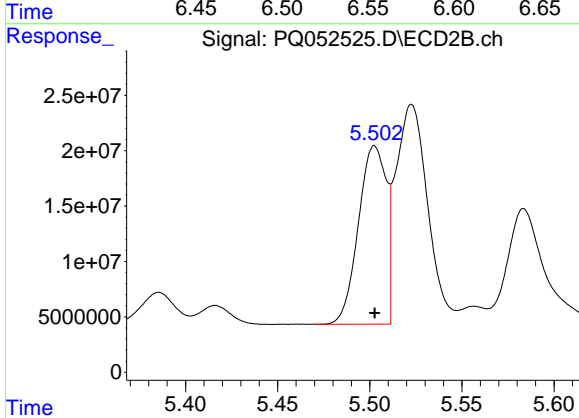
R.T.: 9.585 min
Delta R.T.: 0.000 min
Response: 520104184
Conc: 53.62 ng/ml



#3 AR-1016-1

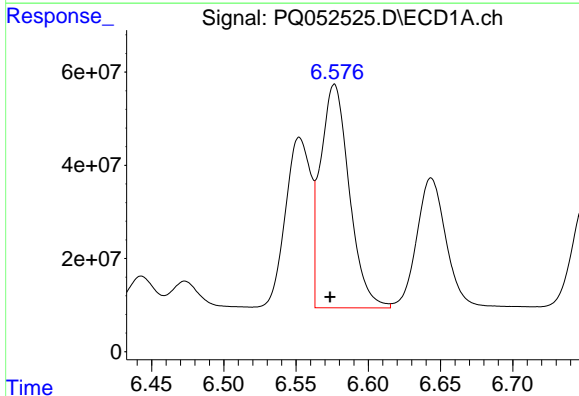
R.T.: 6.552 min
 Delta R.T.: 0.002 min
 Response: 445032615
 Conc: 525.68 ng/ml

Instrument :
 ECD_Q
 ClientSampleId :



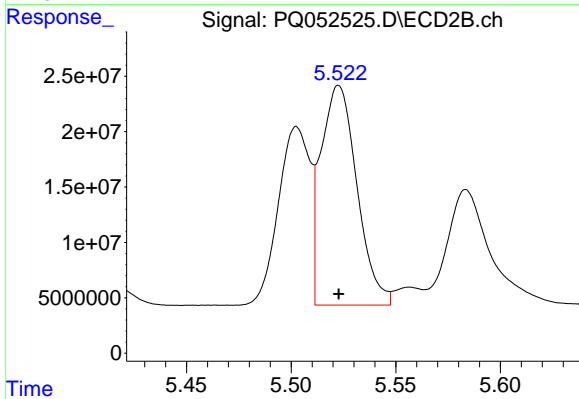
#3 AR-1016-1

R.T.: 5.503 min
 Delta R.T.: 0.000 min
 Response: 169250997
 Conc: 523.80 ng/ml



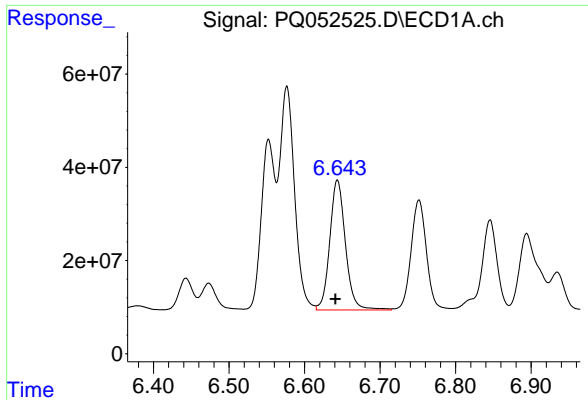
#4 AR-1016-2

R.T.: 6.577 min
 Delta R.T.: 0.003 min
 Response: 663739016
 Conc: 523.94 ng/ml



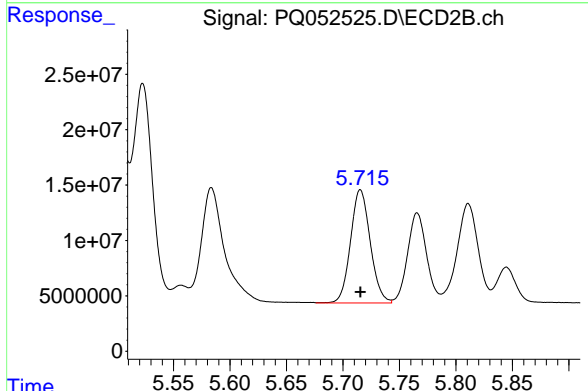
#4 AR-1016-2

R.T.: 5.523 min
 Delta R.T.: 0.000 min
 Response: 237890934
 Conc: 503.51 ng/ml

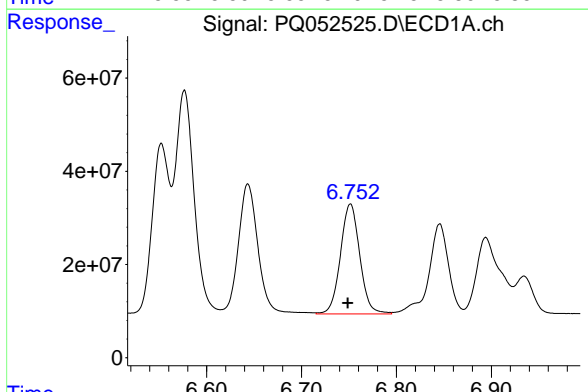


#5 AR-1016-3
 R.T.: 6.644 min
 Delta R.T.: 0.003 min
 Response: 401470280
 Conc: 537.17 ng/ml

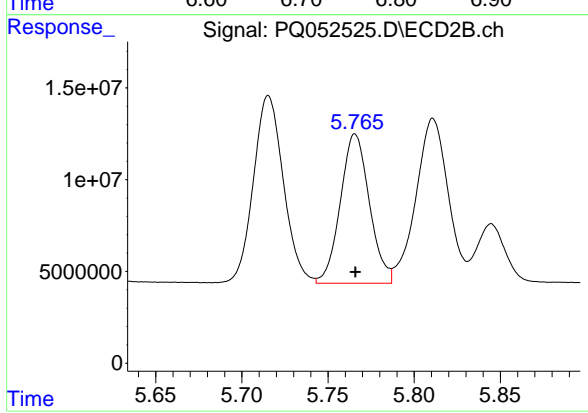
Instrument :
 ECD_Q
 ClientSampleId :



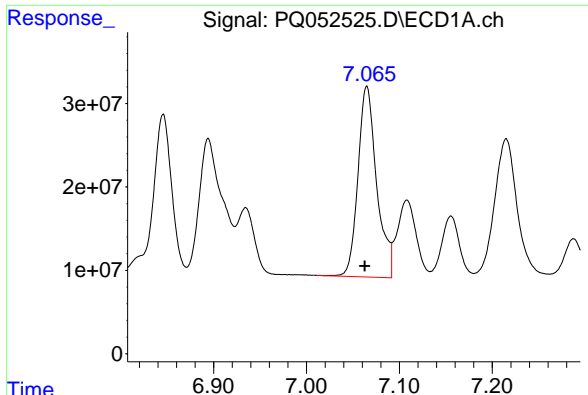
#5 AR-1016-3
 R.T.: 5.715 min
 Delta R.T.: 0.000 min
 Response: 124389800
 Conc: 514.75 ng/ml



#6 AR-1016-4
 R.T.: 6.752 min
 Delta R.T.: 0.003 min
 Response: 333772359
 Conc: 531.97 ng/ml



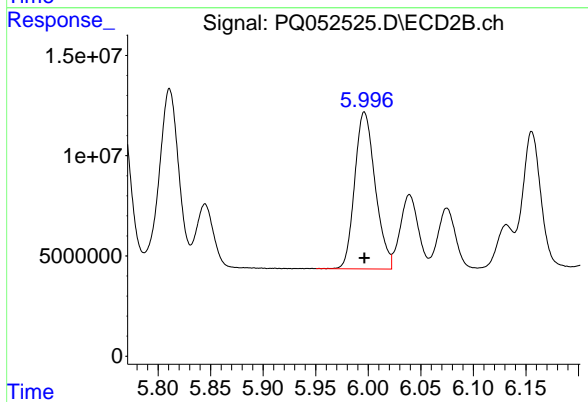
#6 AR-1016-4
 R.T.: 5.766 min
 Delta R.T.: 0.000 min
 Response: 95407625
 Conc: 518.69 ng/ml



#7 AR-1016-5

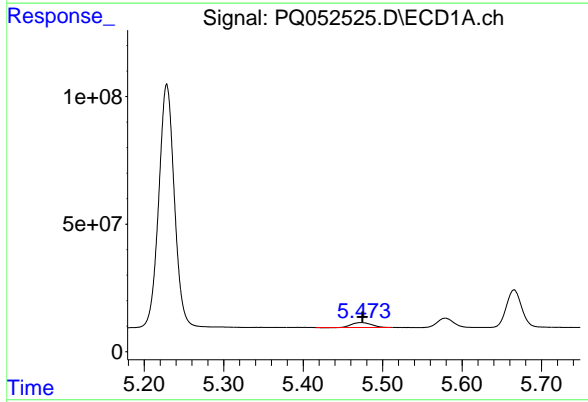
R.T.: 7.065 min
 Delta R.T.: 0.002 min
 Response: 320509891
 Conc: 549.29 ng/ml

Instrument :
 ECD_Q
 ClientSampled :



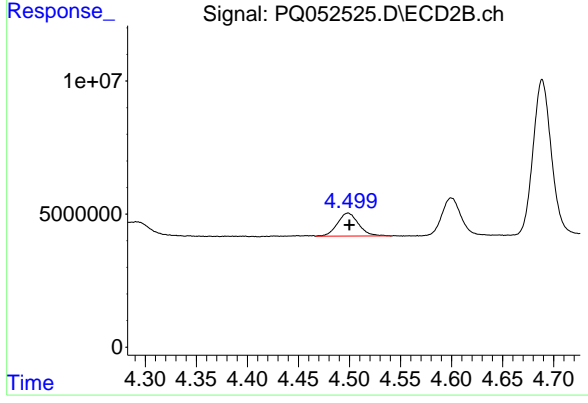
#7 AR-1016-5

R.T.: 5.996 min
 Delta R.T.: 0.000 min
 Response: 106345333
 Conc: 437.83 ng/ml



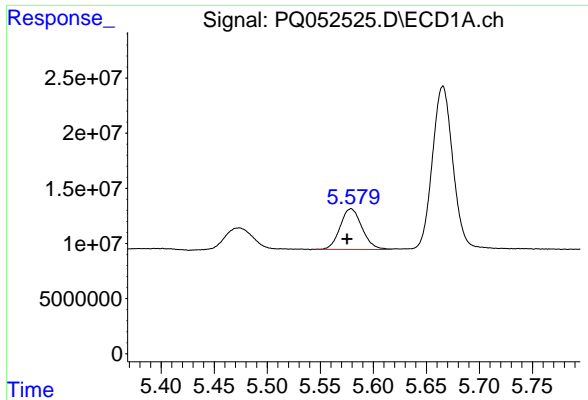
#8 AR-1221-1

R.T.: 5.474 min
 Delta R.T.: 0.000 min
 Response: 33662712
 Conc: 134.88 ng/ml



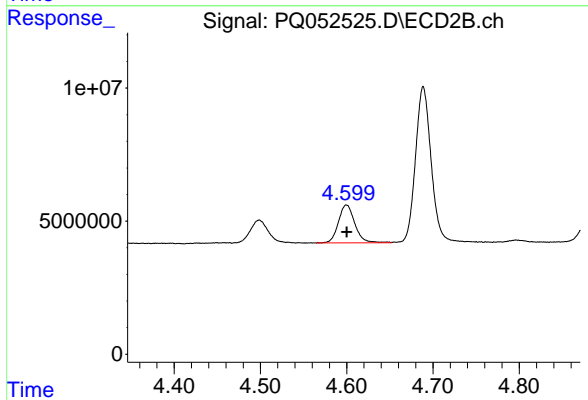
#8 AR-1221-1

R.T.: 4.499 min
 Delta R.T.: -0.001 min
 Response: 12495838
 Conc: 138.43 ng/ml

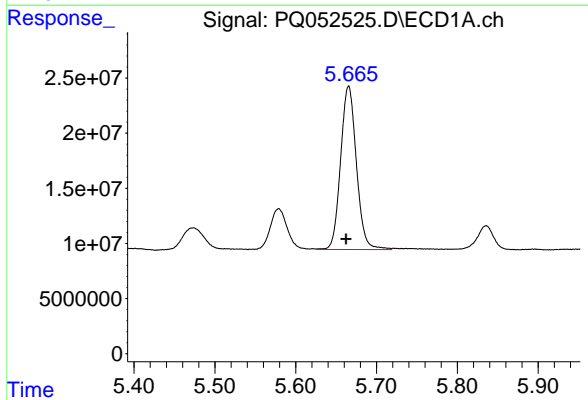


#9 AR-1221-2
 R.T.: 5.579 min
 Delta R.T.: 0.004 min
 Response: 52912183
 Conc: 292.11 ng/ml

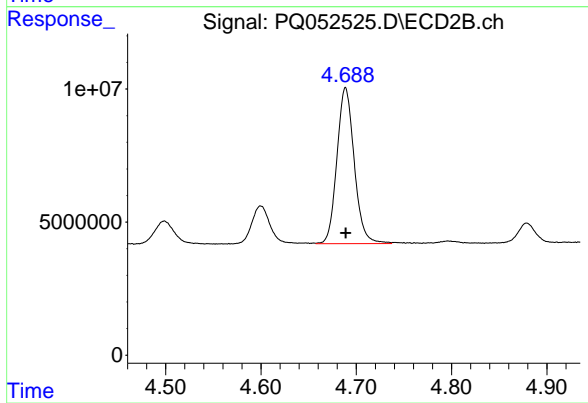
Instrument :
 ECD_Q
 ClientSampleId :



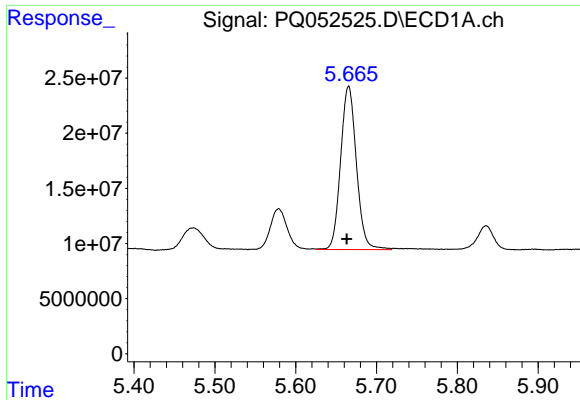
#9 AR-1221-2
 R.T.: 4.600 min
 Delta R.T.: 0.000 min
 Response: 18932649
 Conc: 285.05 ng/ml



#10 AR-1221-3
 R.T.: 5.666 min
 Delta R.T.: 0.003 min
 Response: 201301216
 Conc: 349.43 ng/ml



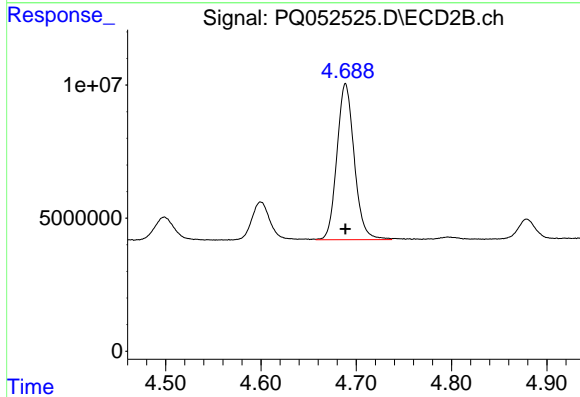
#10 AR-1221-3
 R.T.: 4.689 min
 Delta R.T.: 0.000 min
 Response: 73989697
 Conc: 333.95 ng/ml



#11 AR-1232-1

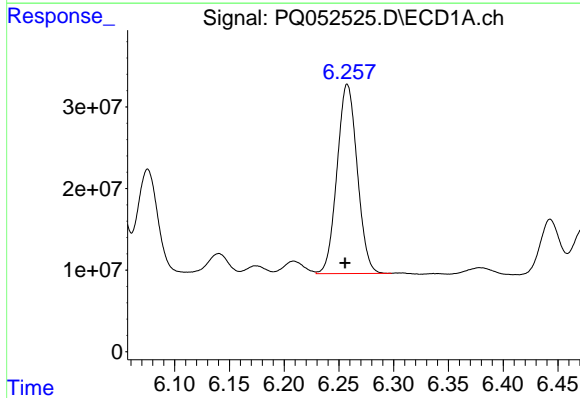
R.T.: 5.666 min
 Delta R.T.: 0.003 min
 Response: 201301216
 Conc: 418.87 ng/ml

Instrument :
 ECD_Q
 ClientSampleId :



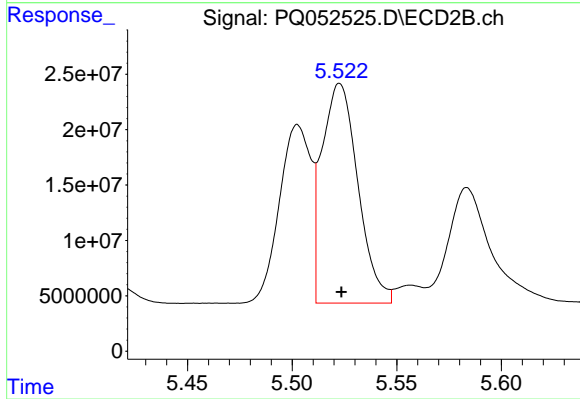
#11 AR-1232-1

R.T.: 4.689 min
 Delta R.T.: 0.000 min
 Response: 73989697
 Conc: 412.56 ng/ml



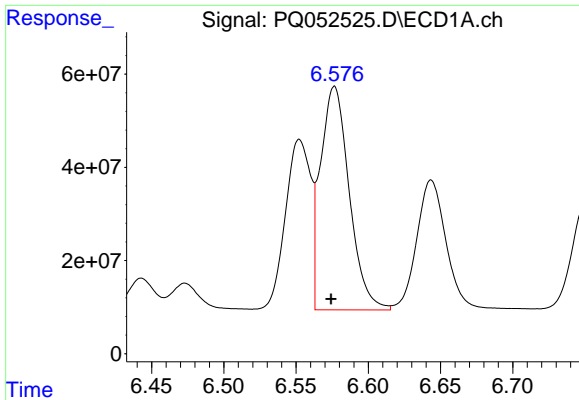
#12 AR-1232-2

R.T.: 6.258 min
 Delta R.T.: 0.002 min
 Response: 297747247
 Conc: 1203.79 ng/ml



#12 AR-1232-2

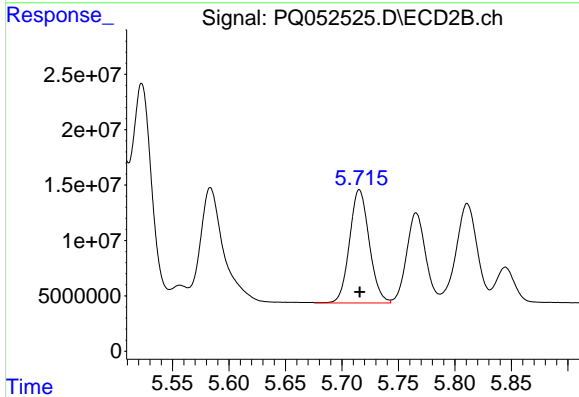
R.T.: 5.523 min
 Delta R.T.: 0.000 min
 Response: 237890934
 Conc: 1230.32 ng/ml



#13 AR-1232-3

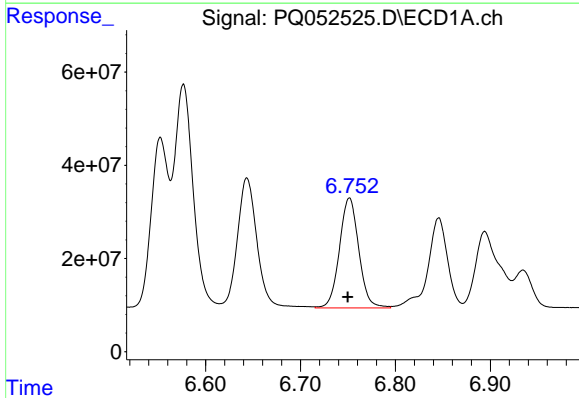
R.T.: 6.577 min
 Delta R.T.: 0.002 min
 Response: 663739016
 Conc: 1258.35 ng/ml

Instrument :
 ECD_Q
 ClientSampled :



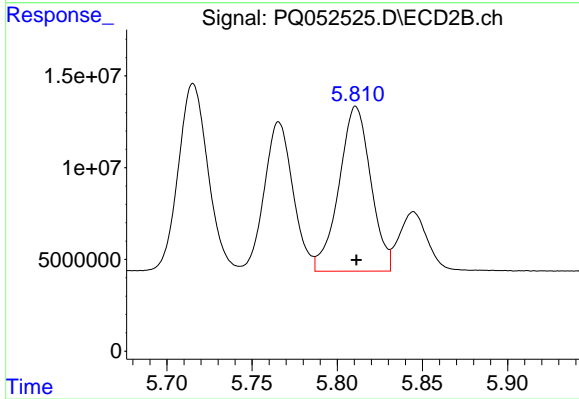
#13 AR-1232-3

R.T.: 5.715 min
 Delta R.T.: 0.000 min
 Response: 124389800
 Conc: 1286.10 ng/ml



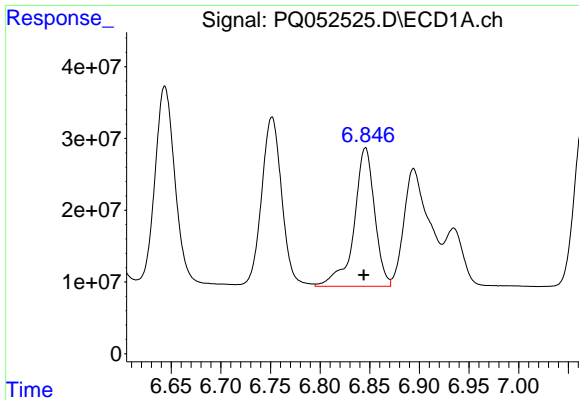
#14 AR-1232-4

R.T.: 6.752 min
 Delta R.T.: 0.002 min
 Response: 333772359
 Conc: 1295.63 ng/ml



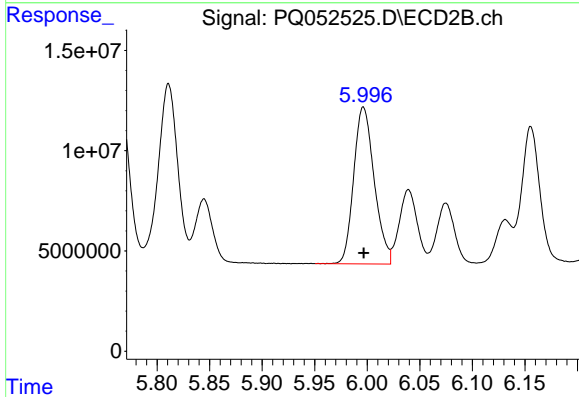
#14 AR-1232-4

R.T.: 5.811 min
 Delta R.T.: 0.000 min
 Response: 116517559
 Conc: 1444.45 ng/ml

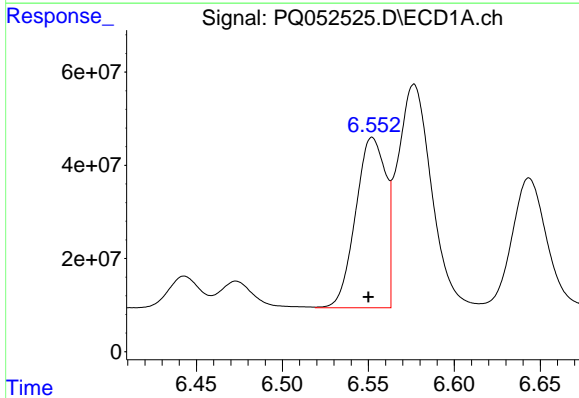


#15 AR-1232-5
 R.T.: 6.846 min
 Delta R.T.: 0.002 min
 Response: 278413477
 Conc: 1545.89 ng/ml

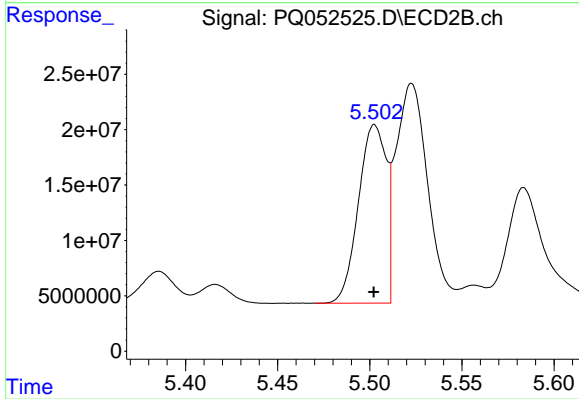
Instrument :
 ECD_Q
 ClientSampleId :



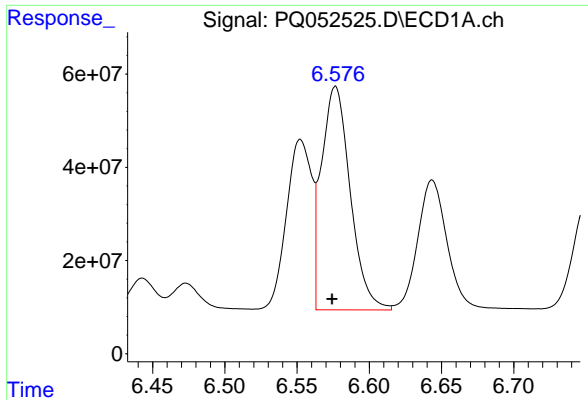
#15 AR-1232-5
 R.T.: 5.996 min
 Delta R.T.: 0.000 min
 Response: 106345333
 Conc: 1177.64 ng/ml



#16 AR-1242-1
 R.T.: 6.552 min
 Delta R.T.: 0.002 min
 Response: 445032615
 Conc: 687.35 ng/ml



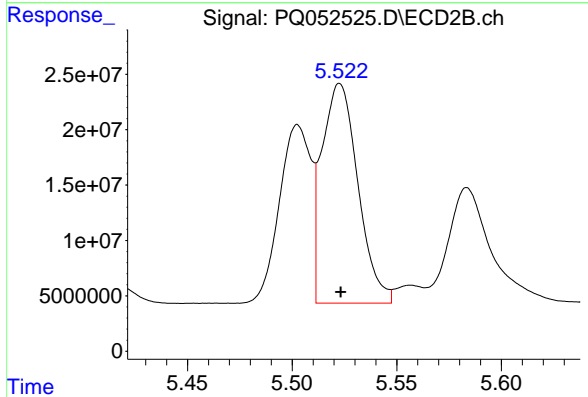
#16 AR-1242-1
 R.T.: 5.503 min
 Delta R.T.: 0.000 min
 Response: 169250997
 Conc: 687.75 ng/ml



#17 AR-1242-2

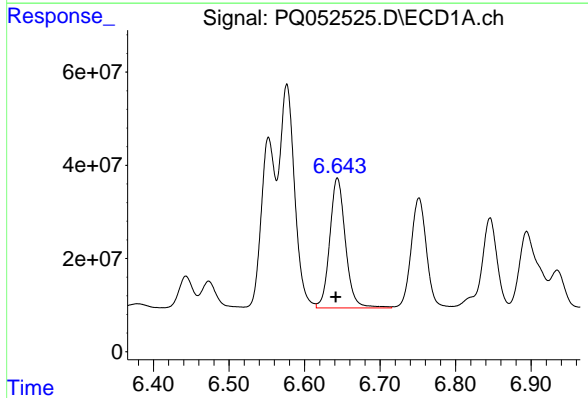
R.T.: 6.577 min
 Delta R.T.: 0.002 min
 Response: 663739016
 Conc: 692.37 ng/ml

Instrument :
 ECD_Q
 ClientSampleId :



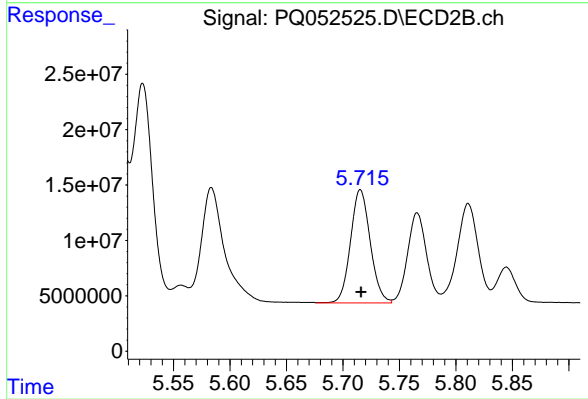
#17 AR-1242-2

R.T.: 5.523 min
 Delta R.T.: 0.000 min
 Response: 237890934
 Conc: 677.20 ng/ml



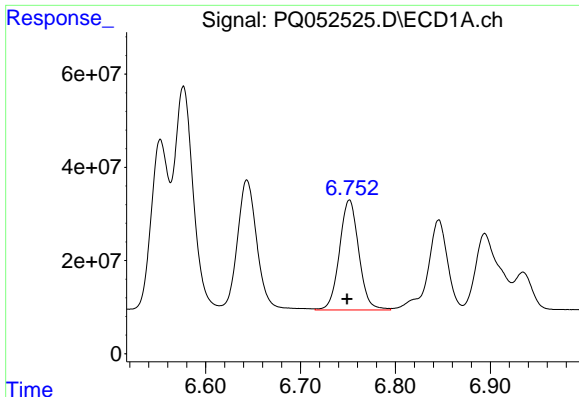
#18 AR-1242-3

R.T.: 6.644 min
 Delta R.T.: 0.002 min
 Response: 401470280
 Conc: 700.24 ng/ml



#18 AR-1242-3

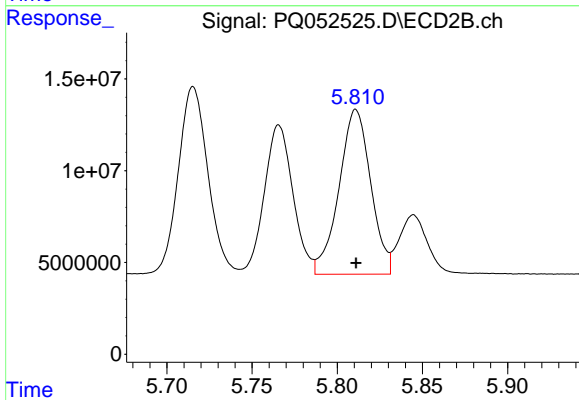
R.T.: 5.715 min
 Delta R.T.: 0.000 min
 Response: 124389800
 Conc: 675.27 ng/ml



#19 AR-1242-4

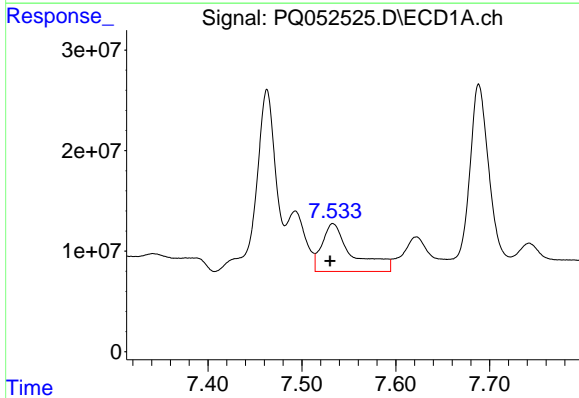
R.T.: 6.752 min
 Delta R.T.: 0.003 min
 Response: 333772359
 Conc: 702.77 ng/ml

Instrument :
 ECD_Q
 ClientSampled :



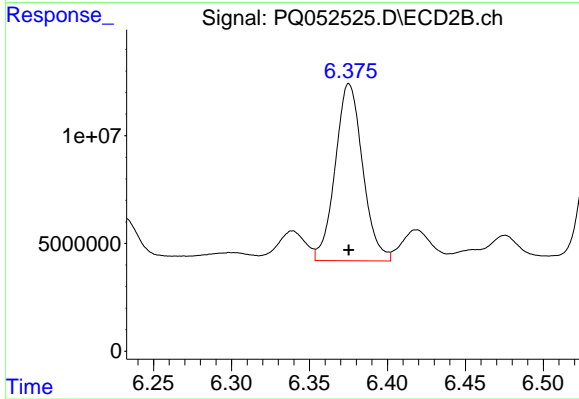
#19 AR-1242-4

R.T.: 5.811 min
 Delta R.T.: 0.000 min
 Response: 116517559
 Conc: 691.46 ng/ml



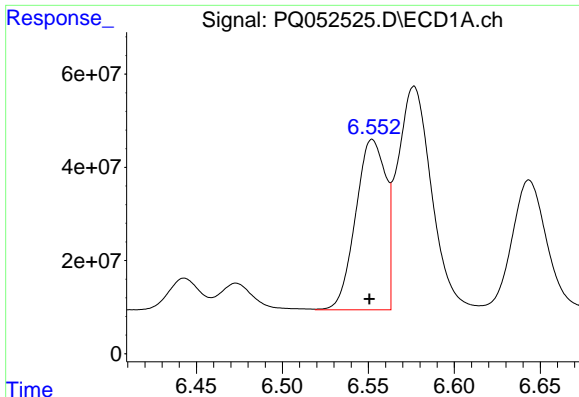
#20 AR-1242-5

R.T.: 7.533 min
 Delta R.T.: 0.003 min
 Response: 106623566
 Conc: 202.51 ng/ml



#20 AR-1242-5

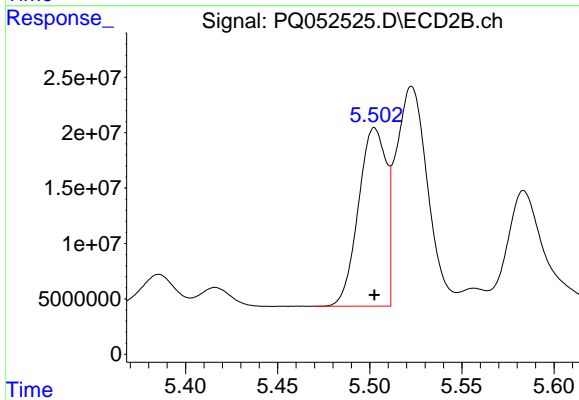
R.T.: 6.375 min
 Delta R.T.: 0.000 min
 Response: 100574385
 Conc: 422.95 ng/ml



#21 AR-1248-1

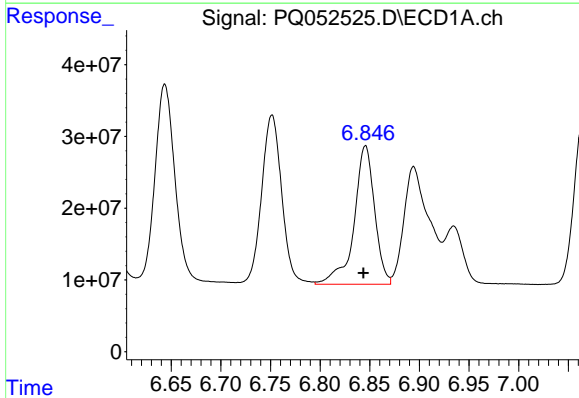
R.T.: 6.552 min
 Delta R.T.: 0.002 min
 Response: 445032615
 Conc: 919.61 ng/ml

Instrument :
 ECD_Q
 ClientSampleId :



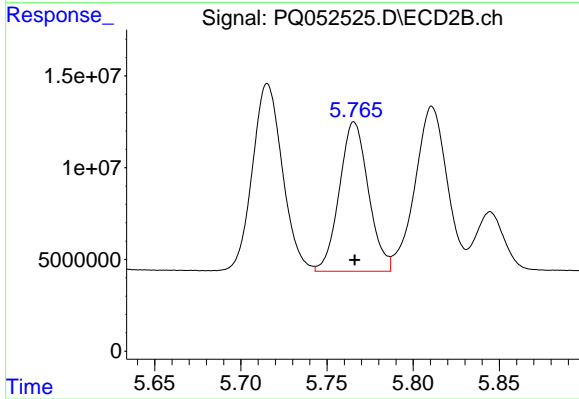
#21 AR-1248-1

R.T.: 5.503 min
 Delta R.T.: 0.000 min
 Response: 169250997
 Conc: 912.64 ng/ml



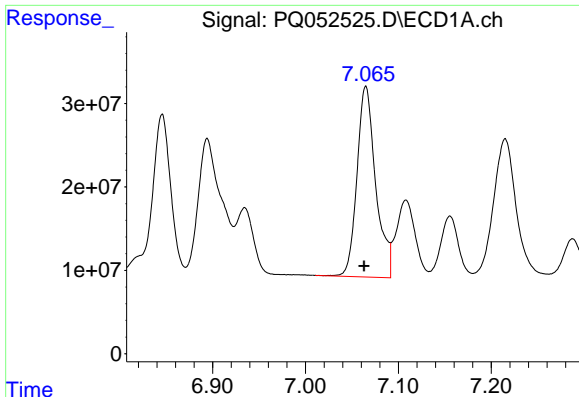
#22 AR-1248-2

R.T.: 6.846 min
 Delta R.T.: 0.002 min
 Response: 278413477
 Conc: 416.56 ng/ml



#22 AR-1248-2

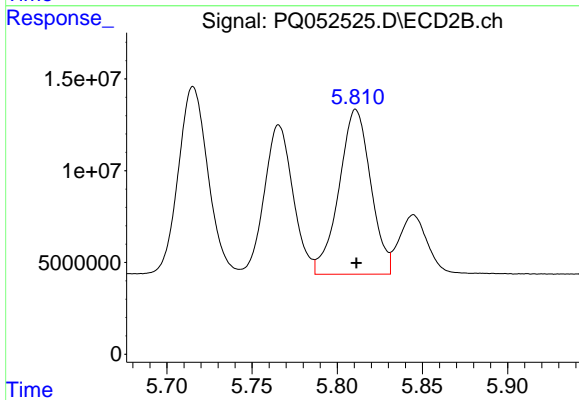
R.T.: 5.766 min
 Delta R.T.: 0.000 min
 Response: 95407625
 Conc: 385.30 ng/ml



#23 AR-1248-3

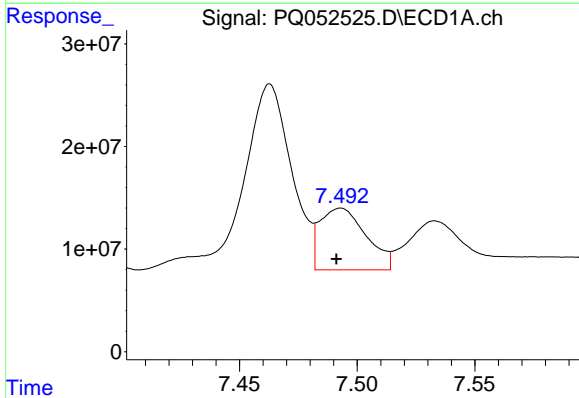
R.T.: 7.065 min
 Delta R.T.: 0.002 min
 Response: 320509891
 Conc: 414.02 ng/ml

Instrument :
 ECD_Q
 ClientSampled :



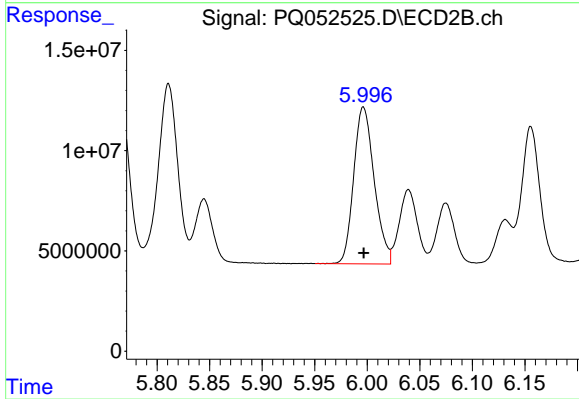
#23 AR-1248-3

R.T.: 5.811 min
 Delta R.T.: 0.000 min
 Response: 116517559
 Conc: 453.68 ng/ml



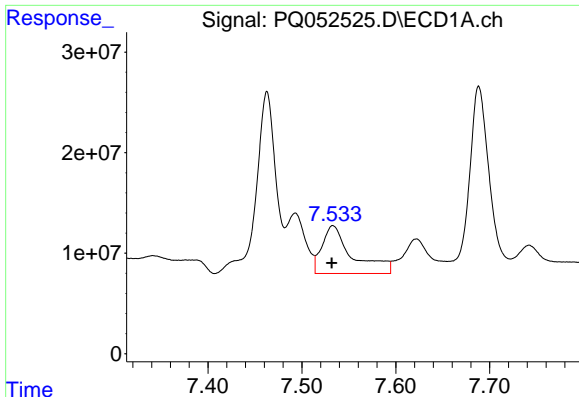
#24 AR-1248-4

R.T.: 7.493 min
 Delta R.T.: 0.002 min
 Response: 82158303
 Conc: 89.25 ng/ml



#24 AR-1248-4

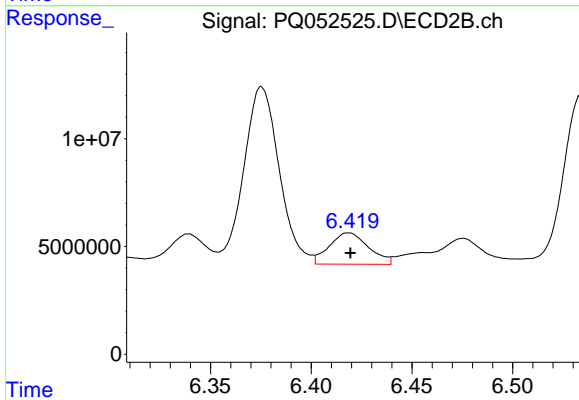
R.T.: 5.996 min
 Delta R.T.: 0.000 min
 Response: 106345333
 Conc: 341.20 ng/ml



#25 AR-1248-5

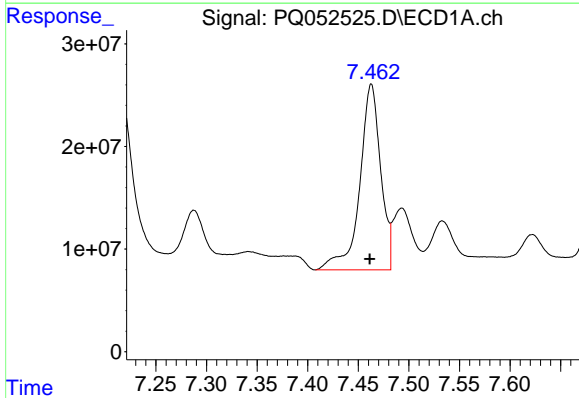
R.T.: 7.533 min
 Delta R.T.: 0.001 min
 Response: 106623566
 Conc: 116.69 ng/ml

Instrument :
 ECD_Q
 ClientSampled :



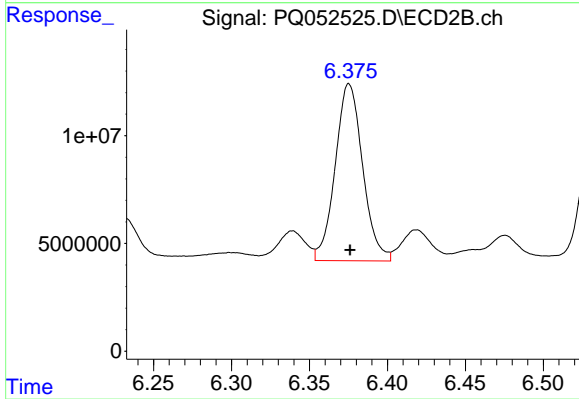
#25 AR-1248-5

R.T.: 6.419 min
 Delta R.T.: 0.000 min
 Response: 19674151
 Conc: 58.43 ng/ml



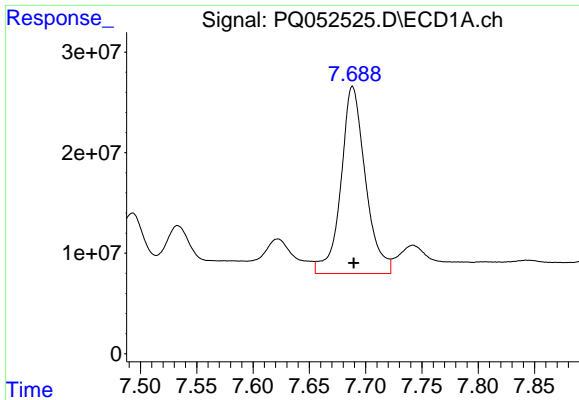
#26 AR-1254-1

R.T.: 7.463 min
 Delta R.T.: 0.001 min
 Response: 260924072
 Conc: 290.04 ng/ml



#26 AR-1254-1

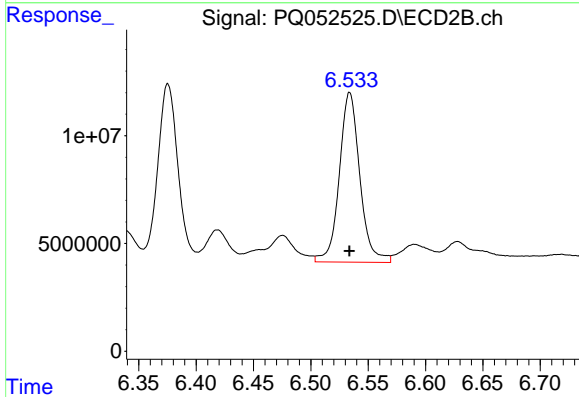
R.T.: 6.375 min
 Delta R.T.: 0.000 min
 Response: 100574385
 Conc: 195.23 ng/ml



#27 AR-1254-2

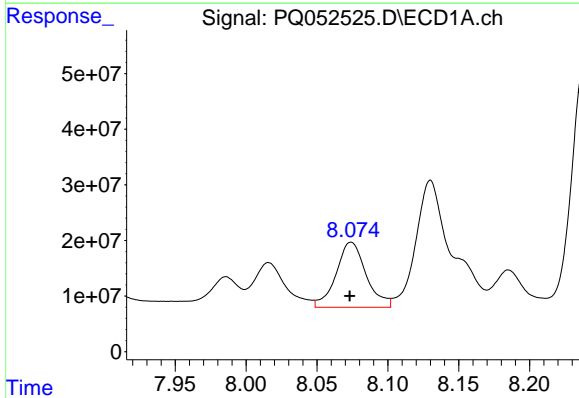
R.T.: 7.688 min
 Delta R.T.: -0.001 min
 Response: 281509491
 Conc: 199.25 ng/ml

Instrument :
 ECD_Q
 ClientSampleId :



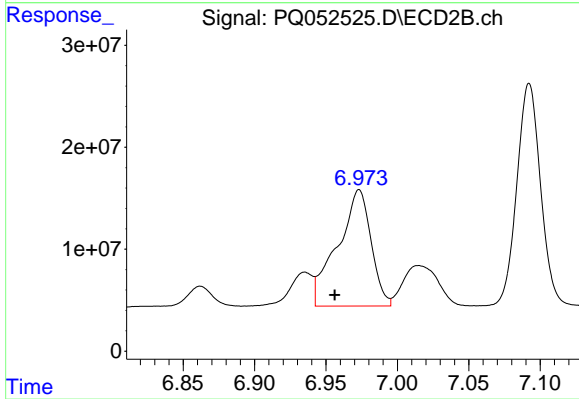
#27 AR-1254-2

R.T.: 6.534 min
 Delta R.T.: 0.000 min
 Response: 98167120
 Conc: 219.38 ng/ml



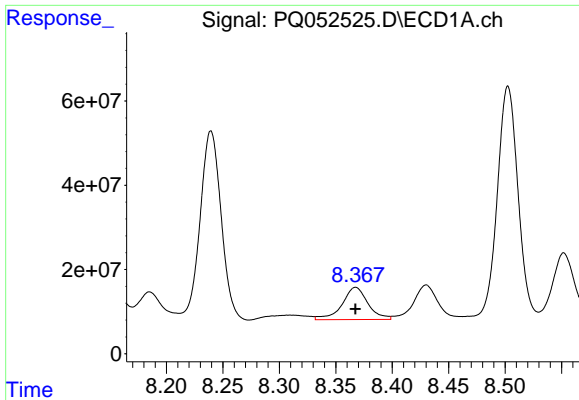
#28 AR-1254-3

R.T.: 8.074 min
 Delta R.T.: 0.000 min
 Response: 172291418
 Conc: 111.00 ng/ml



#28 AR-1254-3

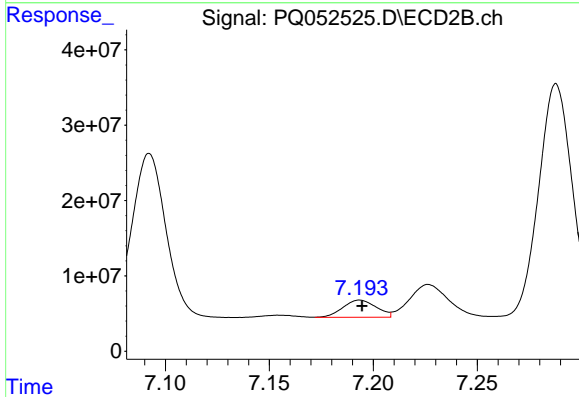
R.T.: 6.973 min
 Delta R.T.: 0.017 min
 Response: 186179448
 Conc: 251.77 ng/ml



#29 AR-1254-4

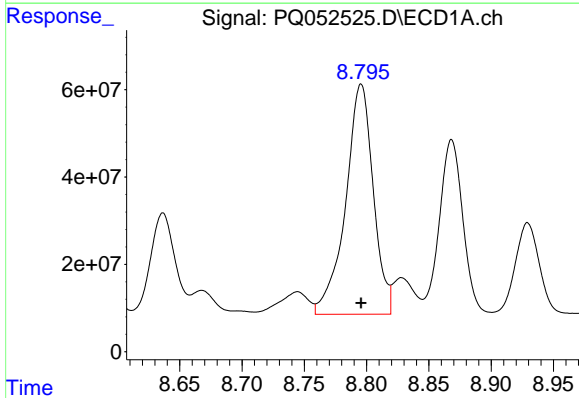
R.T.: 8.368 min
 Delta R.T.: 0.000 min
 Response: 122557814
 Conc: 106.96 ng/ml

Instrument :
 ECD_Q
 ClientSampled :



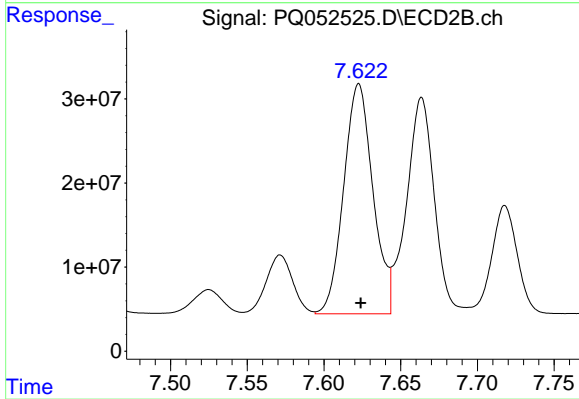
#29 AR-1254-4

R.T.: 7.194 min
 Delta R.T.: -0.001 min
 Response: 25552230
 Conc: 51.17 ng/ml



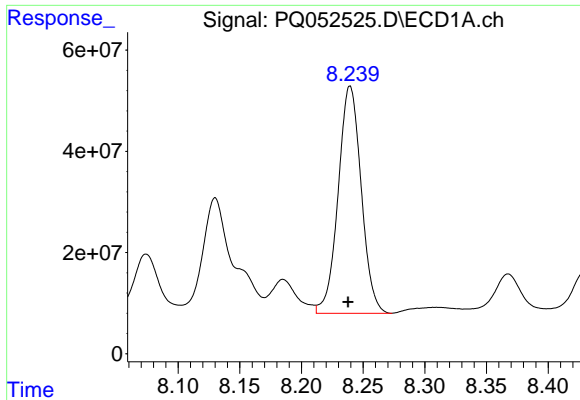
#30 AR-1254-5

R.T.: 8.796 min
 Delta R.T.: 0.000 min
 Response: 816019272
 Conc: 671.02 ng/ml



#30 AR-1254-5

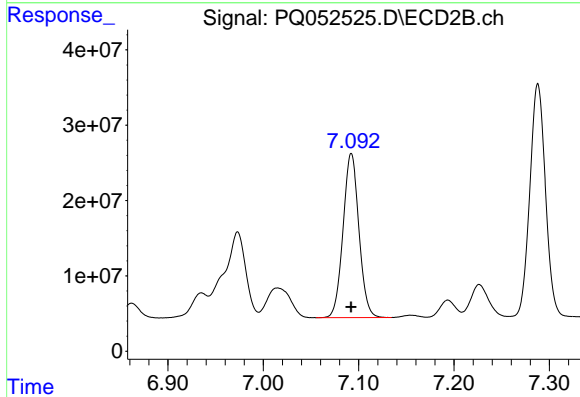
R.T.: 7.623 min
 Delta R.T.: -0.001 min
 Response: 363055592
 Conc: 531.77 ng/ml



#31 AR-1260-1

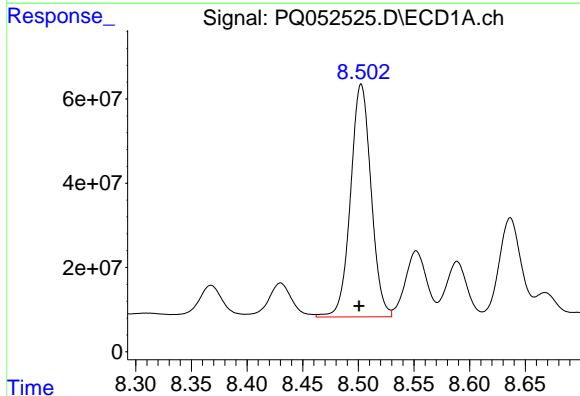
R.T.: 8.239 min
 Delta R.T.: 0.002 min
 Response: 584139756
 Conc: 560.22 ng/ml

Instrument :
 ECD_Q
 ClientSampleId :



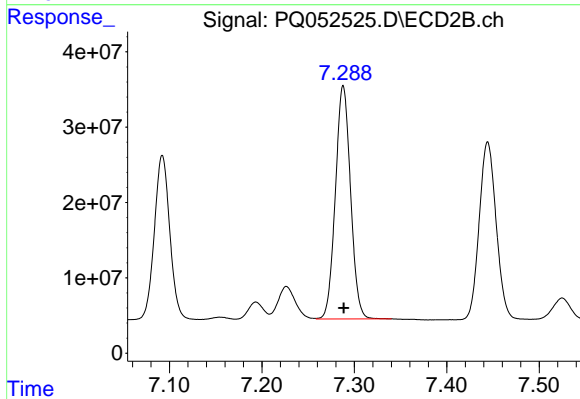
#31 AR-1260-1

R.T.: 7.092 min
 Delta R.T.: 0.000 min
 Response: 252034788
 Conc: 540.61 ng/ml



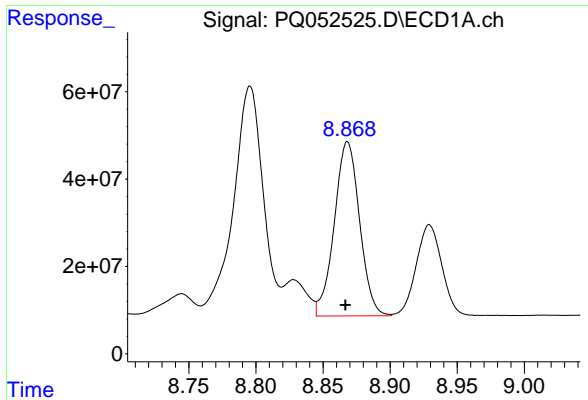
#32 AR-1260-2

R.T.: 8.503 min
 Delta R.T.: 0.002 min
 Response: 710605661
 Conc: 560.62 ng/ml



#32 AR-1260-2

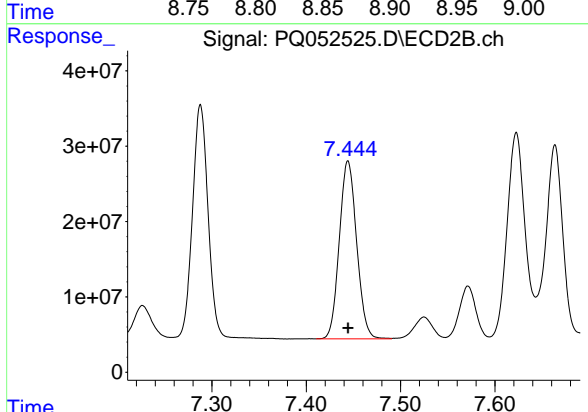
R.T.: 7.288 min
 Delta R.T.: 0.000 min
 Response: 352741424
 Conc: 550.46 ng/ml



#33 AR-1260-3

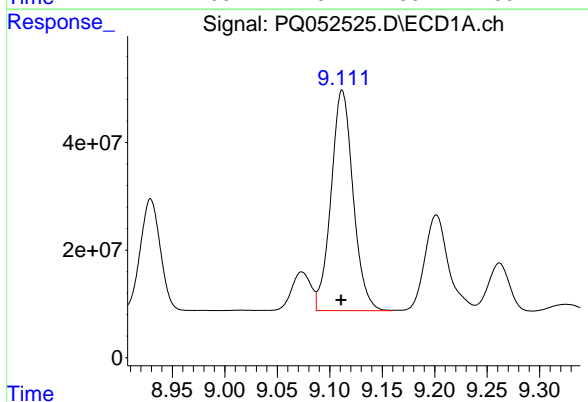
R.T.: 8.868 min
 Delta R.T.: 0.002 min
 Response: 523852297
 Conc: 551.59 ng/ml

Instrument :
 ECD_Q
 ClientSampleId :



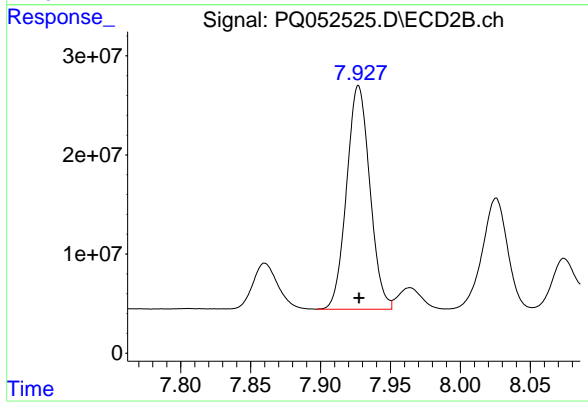
#33 AR-1260-3

R.T.: 7.444 min
 Delta R.T.: 0.000 min
 Response: 301153445
 Conc: 545.92 ng/ml



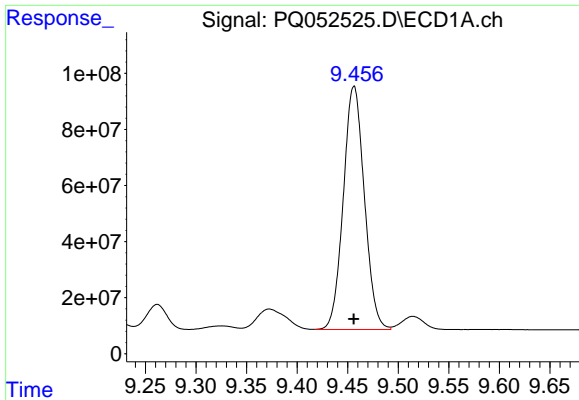
#34 AR-1260-4

R.T.: 9.112 min
 Delta R.T.: 0.001 min
 Response: 600291831
 Conc: 529.21 ng/ml



#34 AR-1260-4

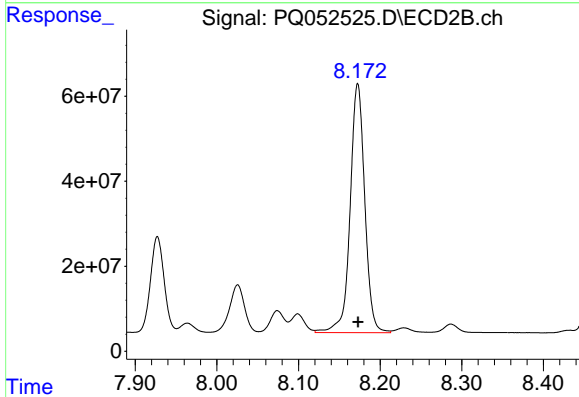
R.T.: 7.927 min
 Delta R.T.: 0.000 min
 Response: 261070865
 Conc: 550.90 ng/ml



#35 AR-1260-5

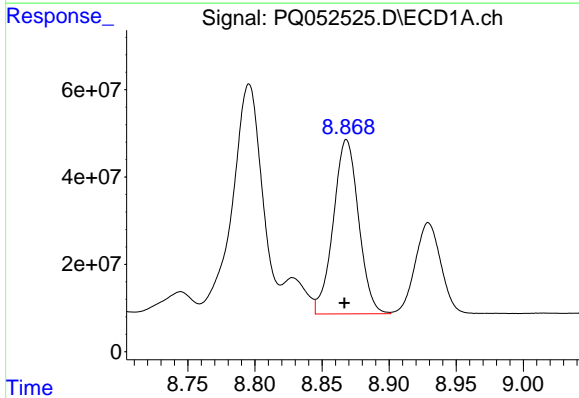
R.T.: 9.456 min
 Delta R.T.: 0.000 min
 Response: 1259725331
 Conc: 526.54 ng/ml

Instrument :
 ECD_Q
 ClientSampled :



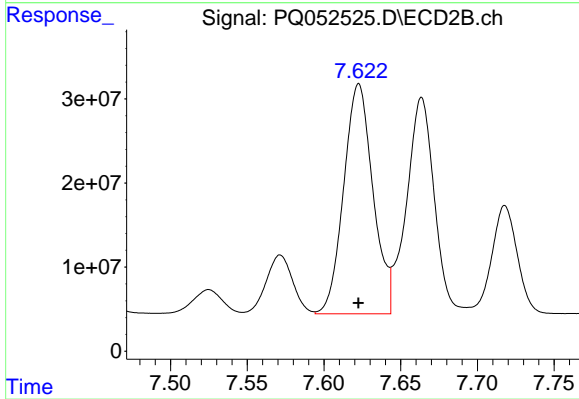
#35 AR-1260-5

R.T.: 8.173 min
 Delta R.T.: 0.000 min
 Response: 730849349
 Conc: 555.17 ng/ml



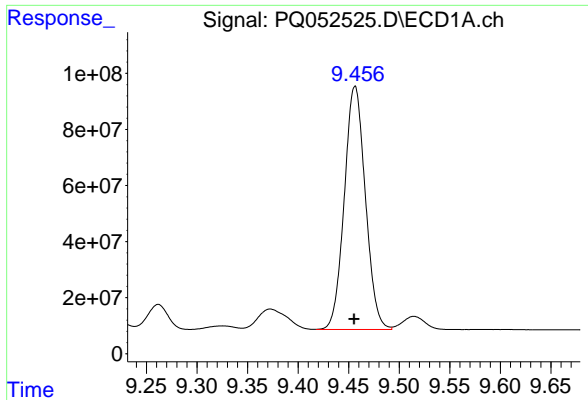
#36 AR-1262-1

R.T.: 8.868 min
 Delta R.T.: 0.001 min
 Response: 523852297
 Conc: 373.30 ng/ml



#36 AR-1262-1

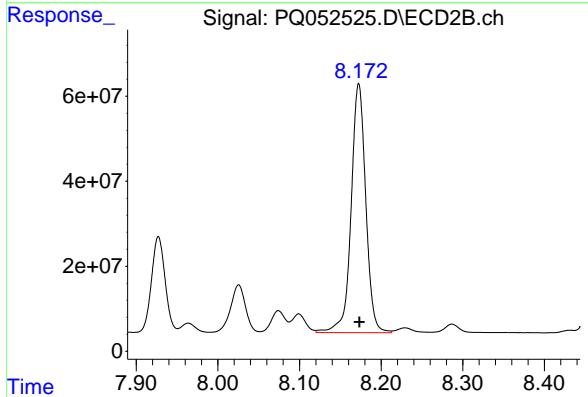
R.T.: 7.623 min
 Delta R.T.: 0.000 min
 Response: 363055592
 Conc: 1010.70 ng/ml



#37 AR-1262-2

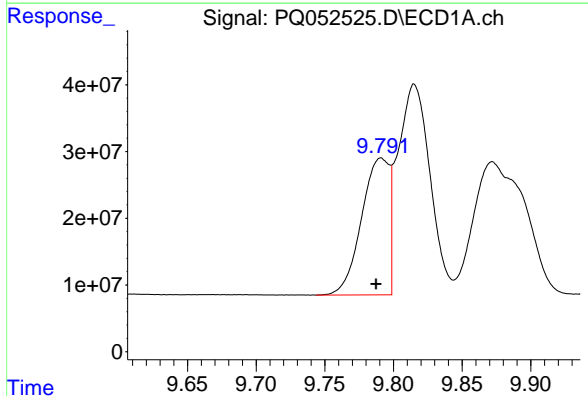
R.T.: 9.456 min
 Delta R.T.: 0.001 min
 Response: 1259725331
 Conc: 459.81 ng/ml

Instrument :
 ECD_Q
 ClientSampled :



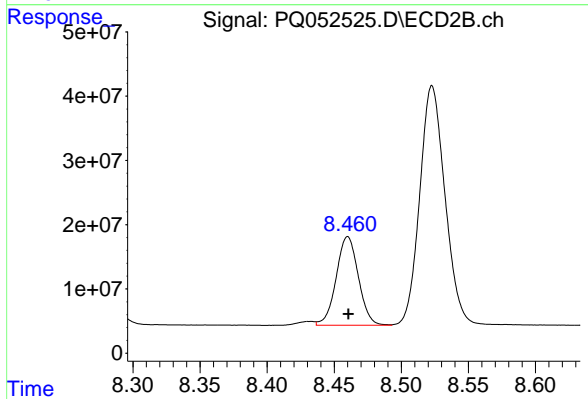
#37 AR-1262-2

R.T.: 8.173 min
 Delta R.T.: 0.000 min
 Response: 730849349
 Conc: 494.20 ng/ml



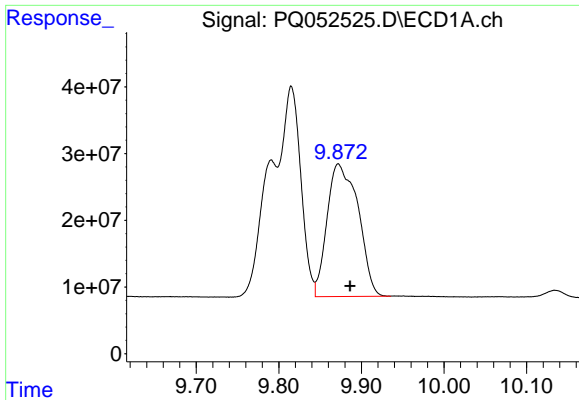
#38 AR-1262-3

R.T.: 9.791 min
 Delta R.T.: 0.004 min
 Response: 288257599
 Conc: 244.15 ng/ml



#38 AR-1262-3

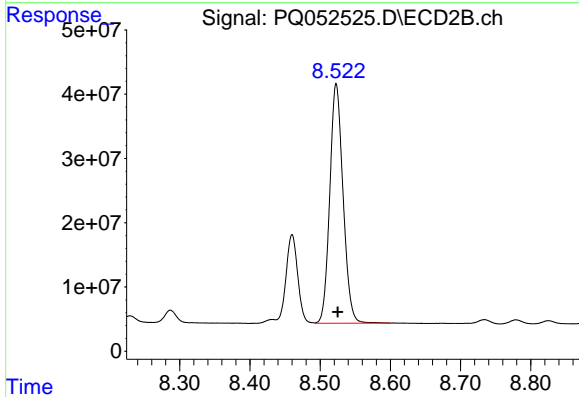
R.T.: 8.460 min
 Delta R.T.: 0.000 min
 Response: 159018763
 Conc: 275.38 ng/ml



#39 AR-1262-4

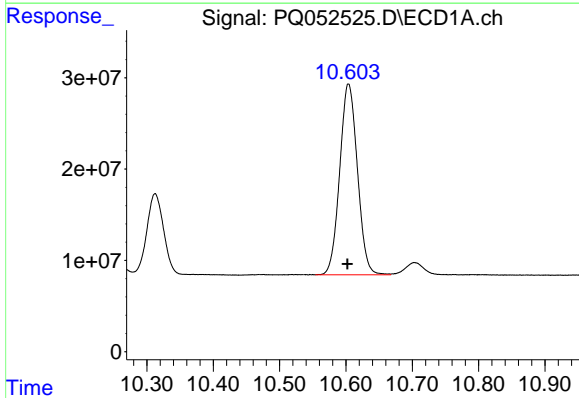
R.T.: 9.872 min
Delta R.T.: -0.014 min
Response: 518604841
Conc: 375.68 ng/ml

Instrument :
ECD_Q
ClientSampleId :



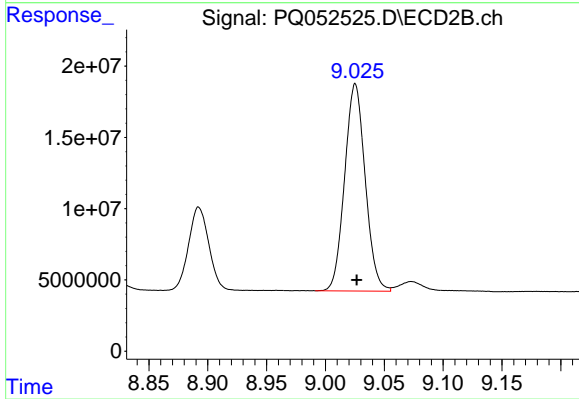
#39 AR-1262-4

R.T.: 8.523 min
Delta R.T.: -0.002 min
Response: 489561826
Conc: 476.13 ng/ml



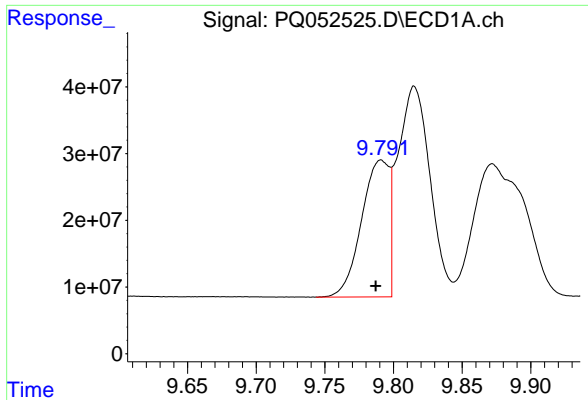
#40 AR-1262-5

R.T.: 10.604 min
Delta R.T.: 0.002 min
Response: 387680872
Conc: 389.71 ng/ml



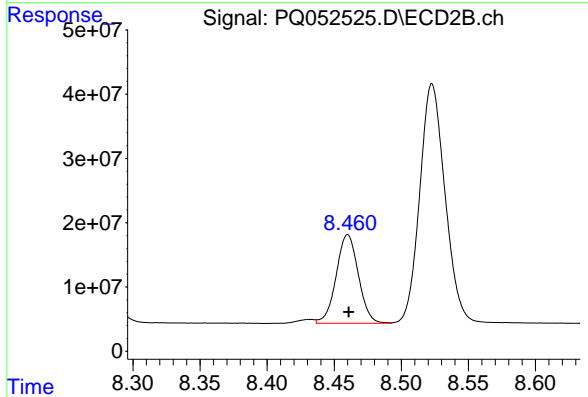
#40 AR-1262-5

R.T.: 9.025 min
Delta R.T.: -0.001 min
Response: 176916496
Conc: 374.98 ng/ml

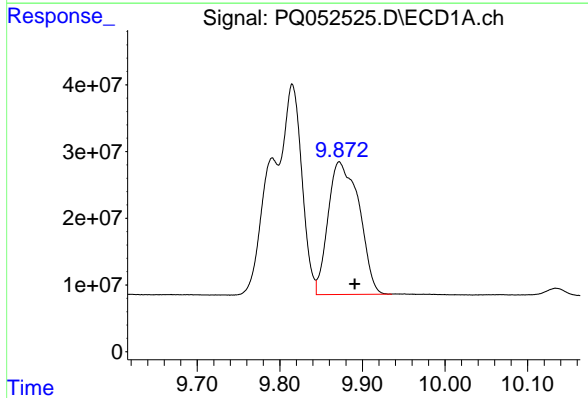


#41 AR-1268-1
 R.T.: 9.791 min
 Delta R.T.: 0.004 min
 Response: 288257599
 Conc: 92.00 ng/ml

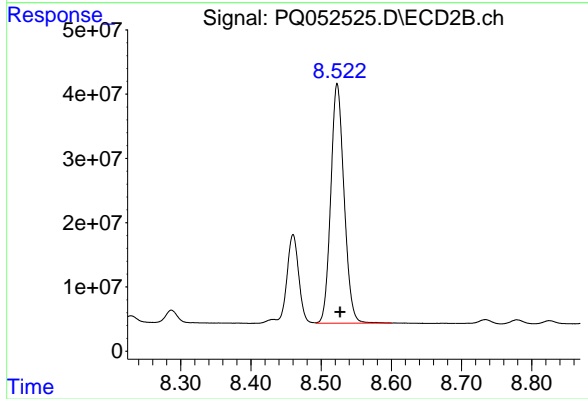
Instrument :
 ECD_Q
 ClientSampled :



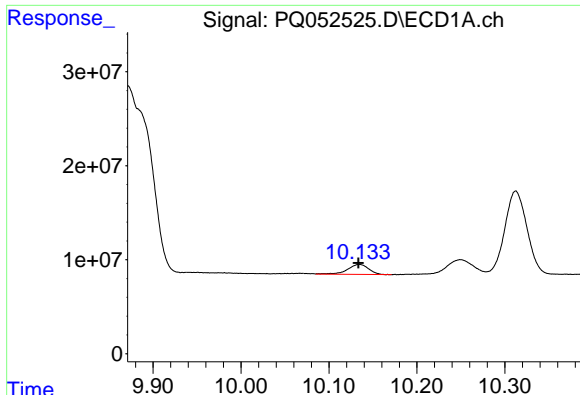
#41 AR-1268-1
 R.T.: 8.460 min
 Delta R.T.: 0.000 min
 Response: 159018763
 Conc: 92.99 ng/ml



#42 AR-1268-2
 R.T.: 9.872 min
 Delta R.T.: -0.019 min
 Response: 518604841
 Conc: 176.63 ng/ml



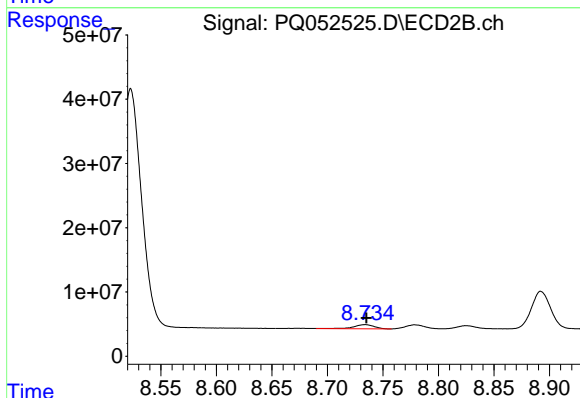
#42 AR-1268-2
 R.T.: 8.523 min
 Delta R.T.: -0.004 min
 Response: 489561826
 Conc: 325.23 ng/ml



#43 AR-1268-3

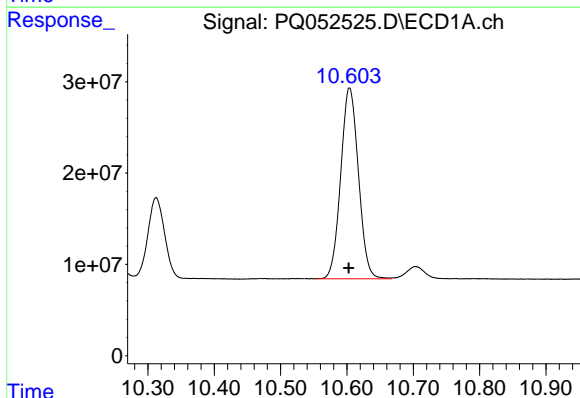
R.T.: 10.134 min
 Delta R.T.: 0.000 min
 Response: 17779754
 Conc: 7.01 ng/ml

Instrument :
 ECD_Q
 ClientSampled :



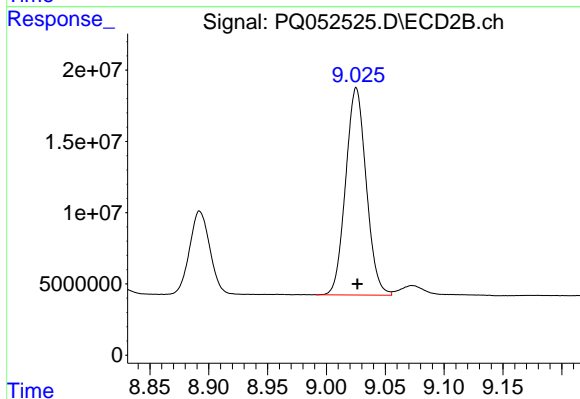
#43 AR-1268-3

R.T.: 8.734 min
 Delta R.T.: -0.001 min
 Response: 8415547
 Conc: 6.53 ng/ml



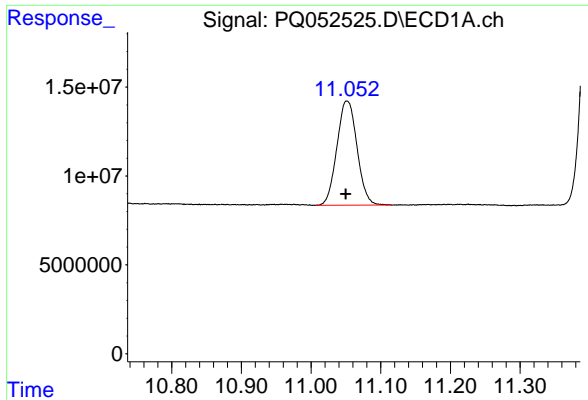
#44 AR-1268-4

R.T.: 10.604 min
 Delta R.T.: 0.001 min
 Response: 387680872
 Conc: 357.18 ng/ml



#44 AR-1268-4

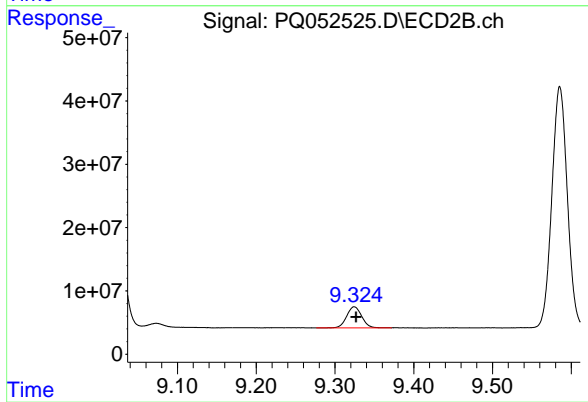
R.T.: 9.025 min
 Delta R.T.: -0.001 min
 Response: 176916496
 Conc: 345.66 ng/ml



#45 AR-1268-5

R.T.: 11.052 min
Delta R.T.: 0.002 min
Response: 117874138
Conc: 13.10 ng/ml

Instrument :
ECD_Q
ClientSampleId :



#45 AR-1268-5

R.T.: 9.325 min
Delta R.T.: -0.002 min
Response: 43656998
Conc: 11.25 ng/ml