

Data Path : Z:\pestpcbsrv\HPCHEM1\ECD_Q\Data\PQ031021\
 Data File : PQ052480.D
 Signal(s) : Signal #1: ECD1A.ch Signal #2: ECD2B.ch
 Acq On : 09 Mar 2021 21:08
 Operator : DD\AJ
 Sample : PB135060BL
 Misc :
 ALS Vial : 16 Sample Multiplier: 1

Instrument :
 ECD_Q
 ClientSampleId :
 PB135060BL

Integration File signal 1: autoint1.e
 Integration File signal 2: autoint2.e
 Quant Time: Mar 10 02:47:47 2021
 Quant Method : Z:\pestpcbsrv\HPCHEM1\ECD_Q\Method\PQ031021.M
 Quant Title : GC EXTRACTABLES
 QLast Update : Wed Mar 10 02:40:50 2021
 Response via : Initial Calibration
 Integrator: ChemStation

Volume Inj. : 2 µl
 Signal #1 Phase : ZB-MR1 Signal #2 Phase: ZB-MR2
 Signal #1 Info : 30Mx0.32mmx 0.50µ Signal #2 Info : 30M x 0.32mm x 0.25µm

Compound	RT#1	RT#2	Resp#1	Resp#2	ng/ml	ng/ml

System Monitoring Compounds						
1) SA Tetrachlo...	5.226	4.242	508.7E6	178.7E6	20.026	19.640
2) SA Decachlor...	11.415	9.586	513.6E6	199.3E6	20.600	20.545

Target Compounds

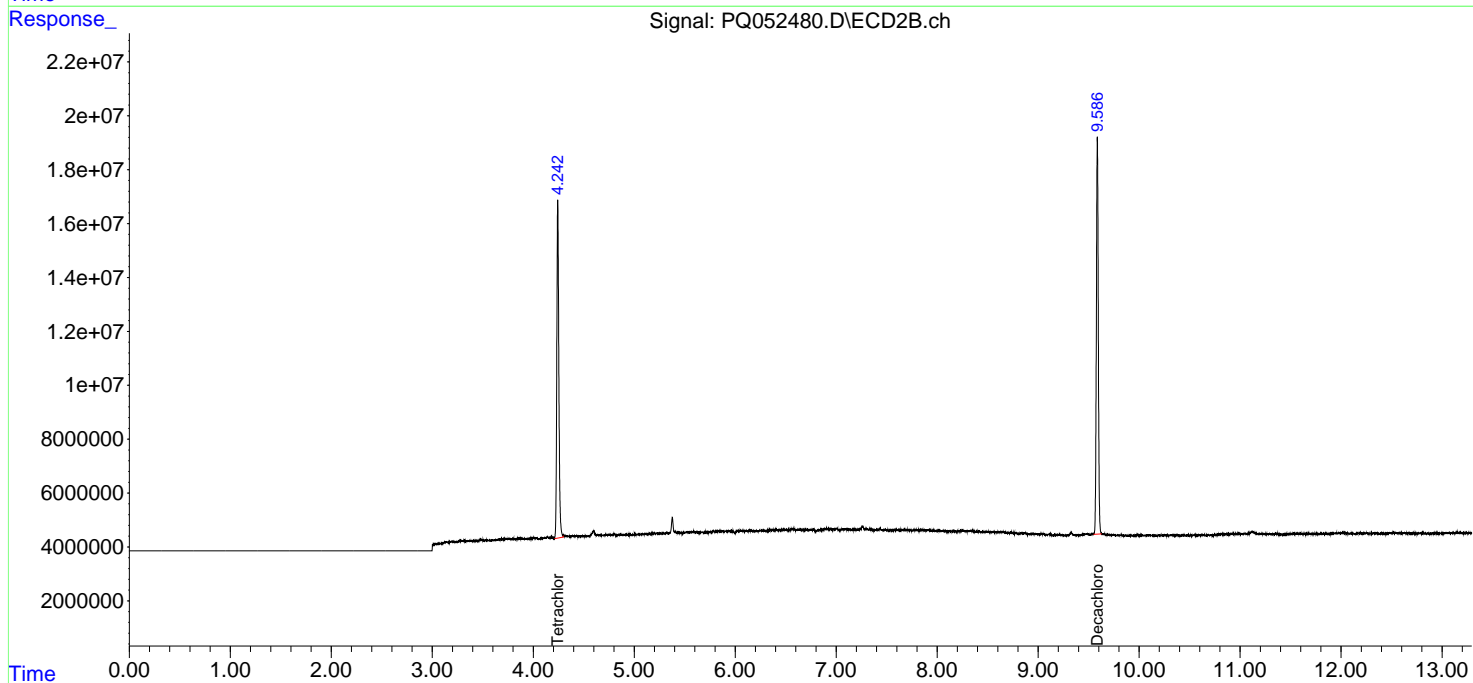
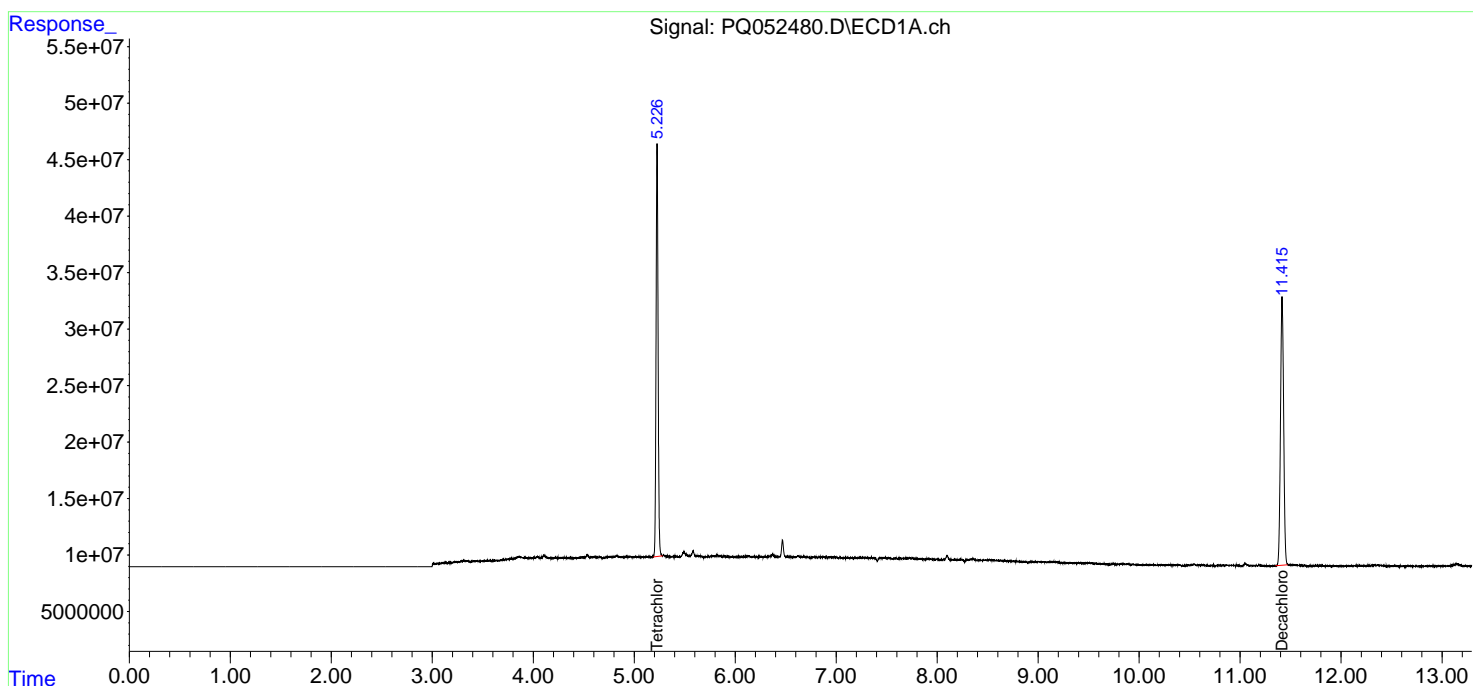
(f)=RT Delta > 1/2 Window (#)=Amounts differ by > 25% (m)=manual int.

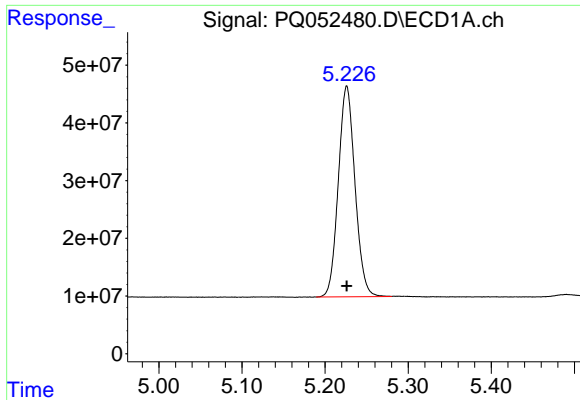
Data Path : Z:\pestpcbsrv\HPCHEM1\ECD_Q\Data\PQ031021\
 Data File : PQ052480.D
 Signal(s) : Signal #1: ECD1A.ch Signal #2: ECD2B.ch
 Acq On : 09 Mar 2021 21:08
 Operator : DD\AJ
 Sample : PB135060BL
 Misc :
 ALS Vial : 16 Sample Multiplier: 1

Instrument :
 ECD_Q
ClientSampled :
 PB135060BL

Integration File signal 1: autoint1.e
 Integration File signal 2: autoint2.e
 Quant Time: Mar 10 02:47:47 2021
 Quant Method : Z:\pestpcbsrv\HPCHEM1\ECD_Q\Method\PQ031021.M
 Quant Title : GC EXTRACTABLES
 QLast Update : Wed Mar 10 02:40:50 2021
 Response via : Initial Calibration
 Integrator: ChemStation

Volume Inj. : 2 µl
 Signal #1 Phase : ZB-MR1 Signal #2 Phase: ZB-MR2
 Signal #1 Info : 30Mx0.32mmx 0.50µ Signal #2 Info : 30M x 0.32mm x 0.25µm

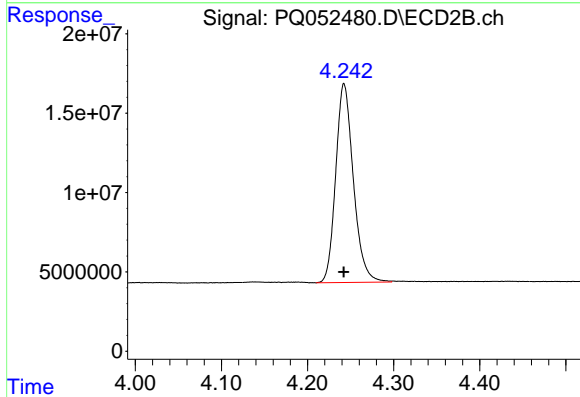




#1 Tetrachloro-m-xylene

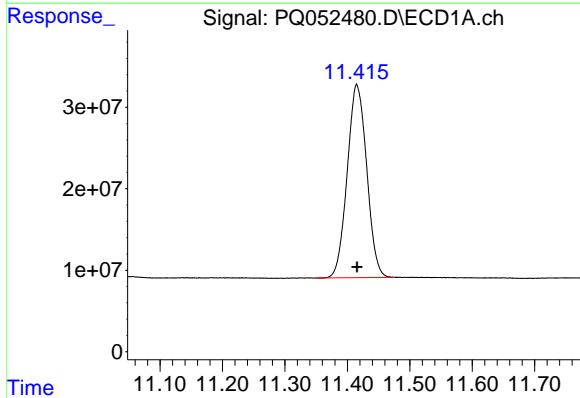
R.T.: 5.226 min
 Delta R.T.: 0.000 min
 Response: 508665201
 Conc: 20.03 ng/ml

Instrument :
 ECD_Q
 ClientSampleId :
 PB135060BL



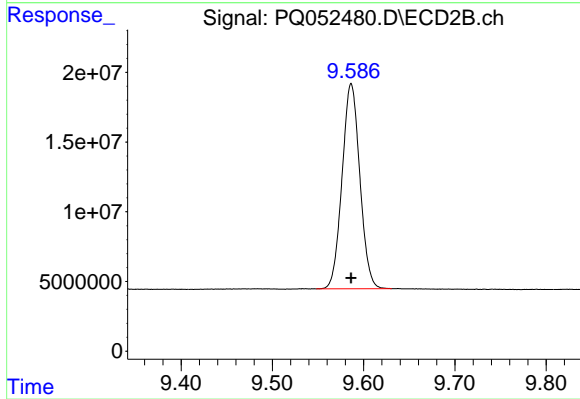
#1 Tetrachloro-m-xylene

R.T.: 4.242 min
 Delta R.T.: 0.000 min
 Response: 178653857
 Conc: 19.64 ng/ml



#2 Decachlorobiphenyl

R.T.: 11.415 min
 Delta R.T.: 0.000 min
 Response: 513553890
 Conc: 20.60 ng/ml



#2 Decachlorobiphenyl

R.T.: 9.586 min
 Delta R.T.: 0.000 min
 Response: 199273071
 Conc: 20.54 ng/ml