

Data Path : Z:\pestpcbsrv\HPCHEM1\ECD\_Q\Data\PQ031021\  
 Data File : PQ052496.D  
 Signal(s) : Signal #1: ECD1A.ch Signal #2: ECD2B.ch  
 Acq On : 10 Mar 2021 01:31  
 Operator : DD\AJ  
 Sample : M1458-07  
 Misc : AR1248 LOD 25 PPB  
 ALS Vial : 30 Sample Multiplier: 1

**Instrument :**  
 ECD\_Q  
**ClientSampleId :**  
 LOD-MDL-WATER-01-QT1-2021

**Manual Integrations**  
**APPROVED**  
 Ankita  
 3/10/2021 2:40:08 PM

Integration File signal 1: autoint1.e  
 Integration File signal 2: autoint2.e  
 Quant Time: Mar 10 02:54:18 2021  
 Quant Method : Z:\pestpcbsrv\HPCHEM1\ECD\_Q\Method\PQ031021.M  
 Quant Title : GC EXTRACTABLES  
 QLast Update : Wed Mar 10 02:40:50 2021  
 Response via : Initial Calibration  
 Integrator: ChemStation

Volume Inj. : 2 µl  
 Signal #1 Phase : ZB-MR1 Signal #2 Phase: ZB-MR2  
 Signal #1 Info : 30Mx0.32mmx 0.50µ Signal #2 Info : 30M x 0.32mm x 0.25µm

Compound	RT#1	RT#2	Resp#1	Resp#2	ng/ml	ng/ml
-----						
System Monitoring Compounds						
1) SA Tetrachlo...	5.226	4.242	495.3E6	171.7E6	19.498	18.878
2) SA Decachlor...	11.412	9.585	498.9E6	189.1E6	20.011	19.497
Target Compounds						
21) L5 AR-1248-1	6.548	5.501	12469144	4669011	25.766m	25.176m
22) L5 AR-1248-2	6.842	5.766	14033392	5301605	20.997m	21.410
23) L5 AR-1248-3	7.063	5.811	18163014	5998668	23.462	23.357
24) L5 AR-1248-4	7.490	5.996	19876245	5632182	21.593	18.071
25) L5 AR-1248-5	7.530	6.419	18551887	7843707	20.303	23.296
-----						

(f)=RT Delta > 1/2 Window (#)=Amounts differ by > 25% (m)=manual int.

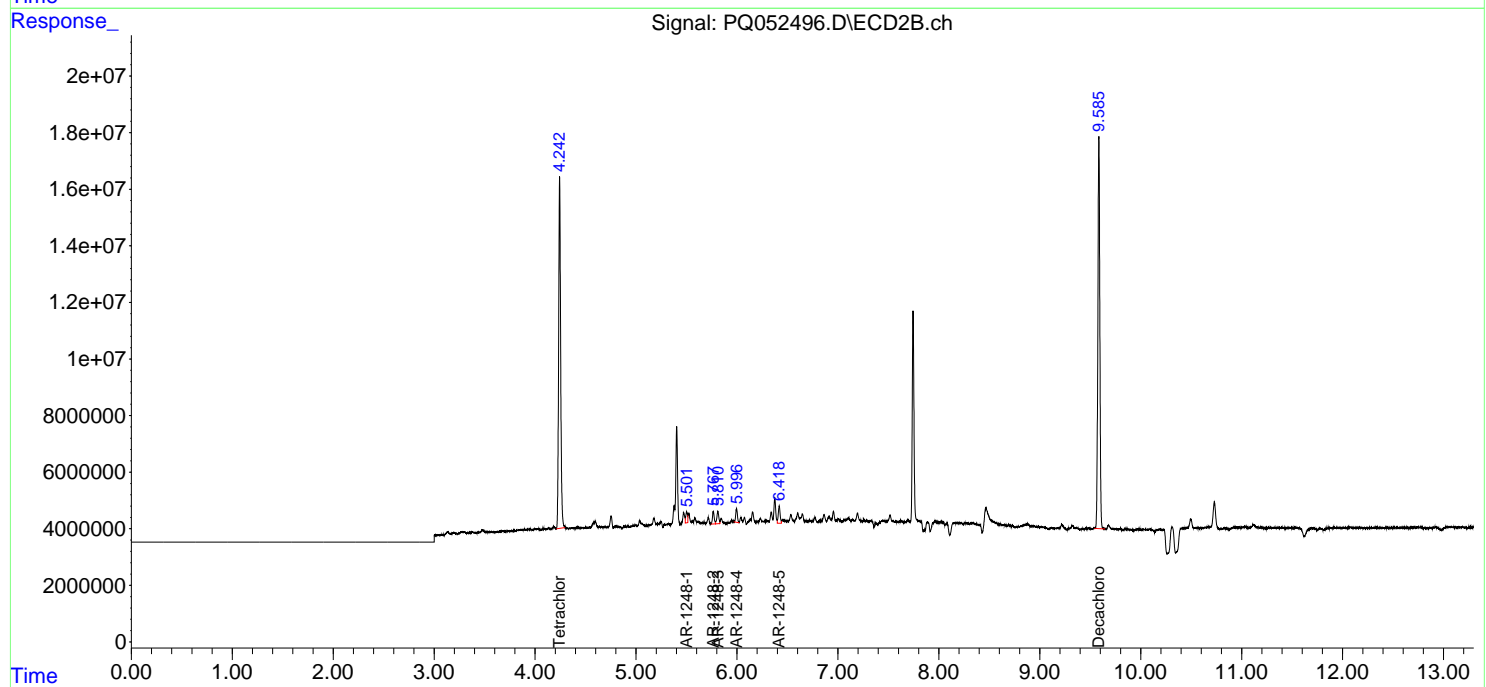
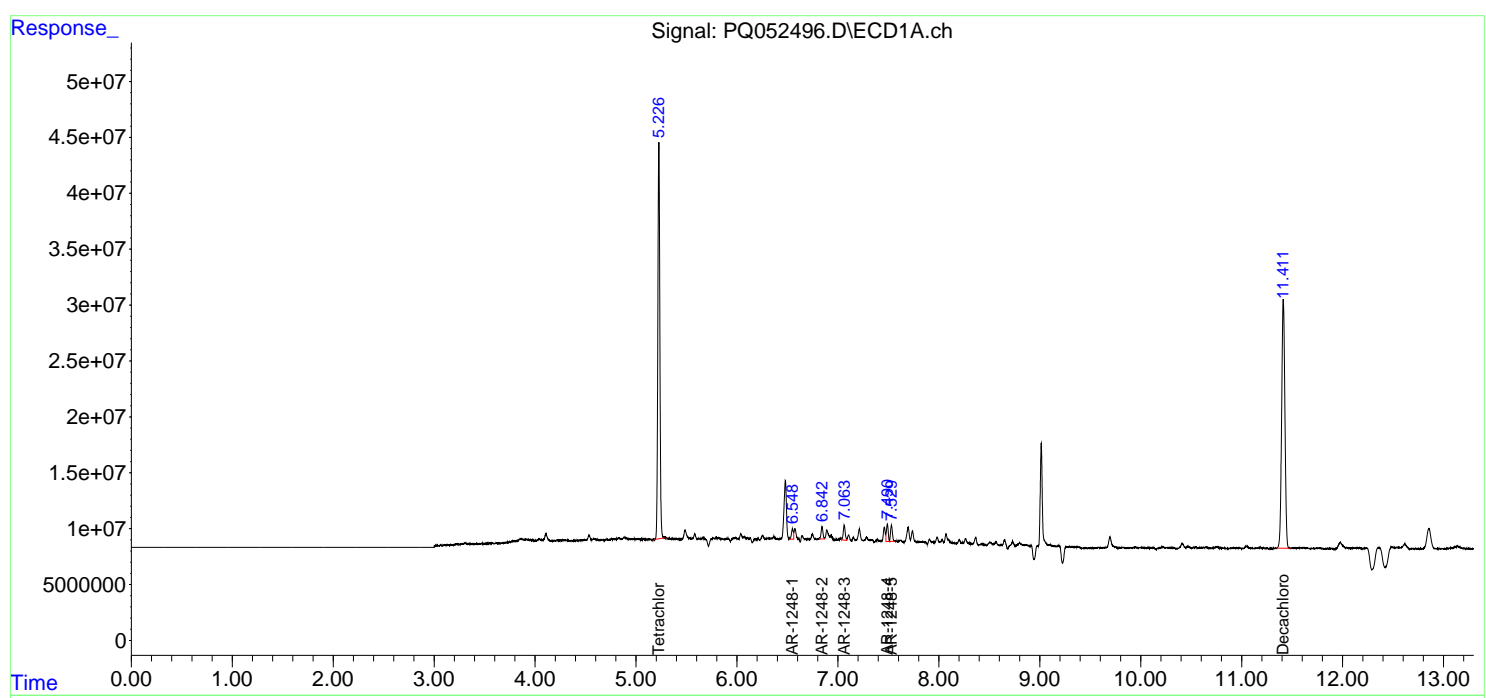
Data Path : Z:\pestpcbsrv\HPCHEM1\ECD\_Q\Data\PQ031021\  
 Data File : PQ052496.D  
 Signal(s) : Signal #1: ECD1A.ch Signal #2: ECD2B.ch  
 Acq On : 10 Mar 2021 01:31  
 Operator : DD\AJ  
 Sample : M1458-07  
 Misc : AR1248 LOD 25 PPB  
 ALS Vial : 30 Sample Multiplier: 1

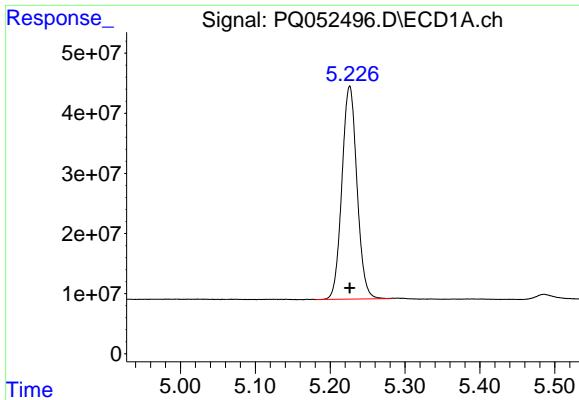
**Instrument :**  
 ECD\_Q  
**Client Sampled :**  
 LOD-MDL-WATER-01-QT1-2021

**Manual Integrations**  
**APPROVED**  
 Ankita  
 3/10/2021 2:40:08 PM

Integration File signal 1: autoint1.e  
 Integration File signal 2: autoint2.e  
 Quant Time: Mar 10 02:54:18 2021  
 Quant Method : Z:\pestpcbsrv\HPCHEM1\ECD\_Q\Method\PQ031021.M  
 Quant Title : GC EXTRACTABLES  
 QLast Update : Wed Mar 10 02:40:50 2021  
 Response via : Initial Calibration  
 Integrator: ChemStation

Volume Inj. : 2 µl  
 Signal #1 Phase : ZB-MR1 Signal #2 Phase: ZB-MR2  
 Signal #1 Info : 30Mx0.32mmx 0.50µ Signal #2 Info : 30M x 0.32mm x 0.25µm

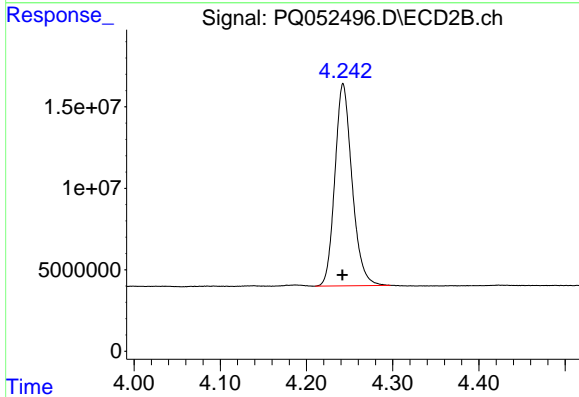




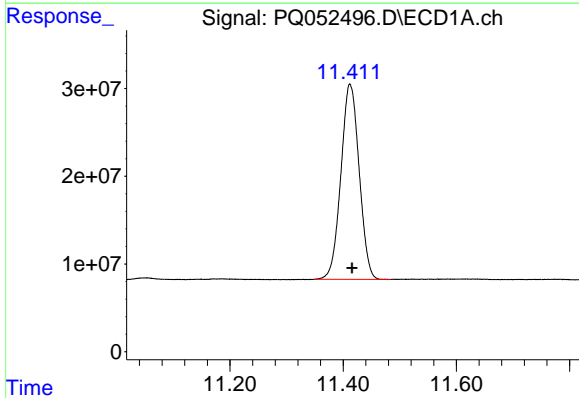
#1 Tetrachloro-m-xylene  
 R.T.: 5.226 min  
 Delta R.T.: 0.000 min  
 Response: 495259304  
 Conc: 19.50 ng/ml

**Instrument :**  
 ECD\_Q  
**ClientSampled :**  
 LOD-MDL-WATER-01-QT1-2021

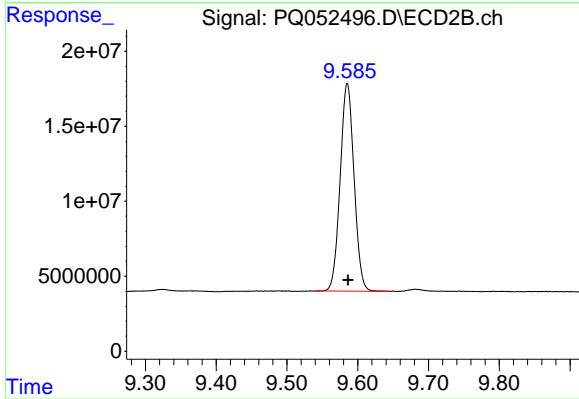
**Manual Integrations**  
**APPROVED**  
 Ankita  
 3/10/2021 2:40:08 PM



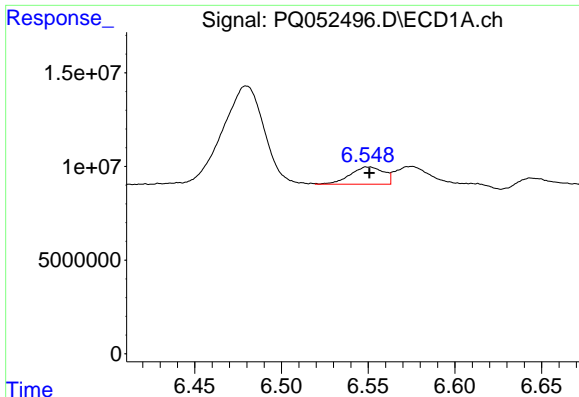
#1 Tetrachloro-m-xylene  
 R.T.: 4.242 min  
 Delta R.T.: 0.000 min  
 Response: 171724968  
 Conc: 18.88 ng/ml



#2 Decachlorobiphenyl  
 R.T.: 11.412 min  
 Delta R.T.: -0.004 min  
 Response: 498863892  
 Conc: 20.01 ng/ml



#2 Decachlorobiphenyl  
 R.T.: 9.585 min  
 Delta R.T.: -0.001 min  
 Response: 189112148  
 Conc: 19.50 ng/ml



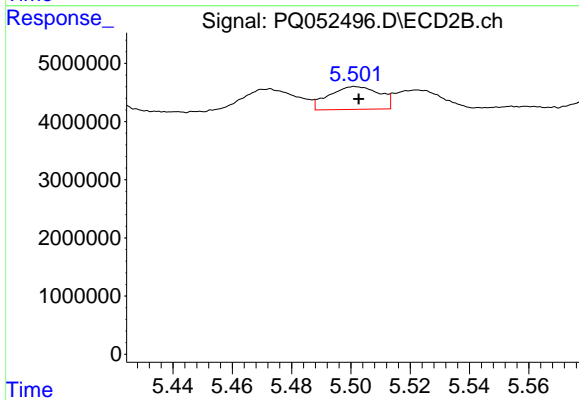
#21 AR-1248-1

R.T.: 6.548 min  
 Delta R.T.: -0.003 min  
 Response: 12469144  
 Conc: 25.77 ng/ml m

Instrument :  
 ECD\_Q  
 ClientSampled :  
 LOD-MDL-WATER-01-QT1-2021

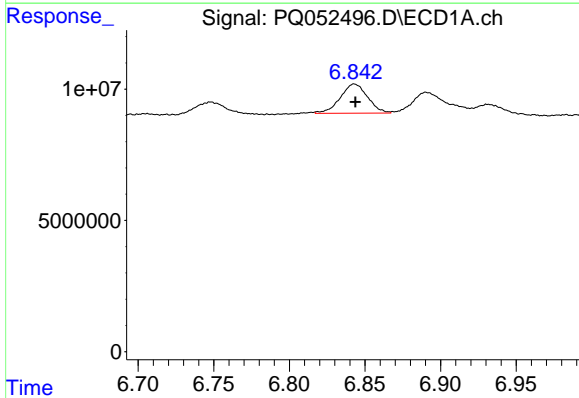
Manual Integrations  
 APPROVED

Ankita  
 3/10/2021 2:40:08 PM



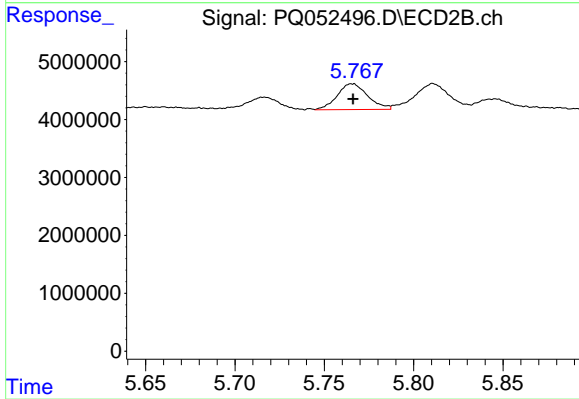
#21 AR-1248-1

R.T.: 5.501 min  
 Delta R.T.: -0.002 min  
 Response: 4669011  
 Conc: 25.18 ng/ml m



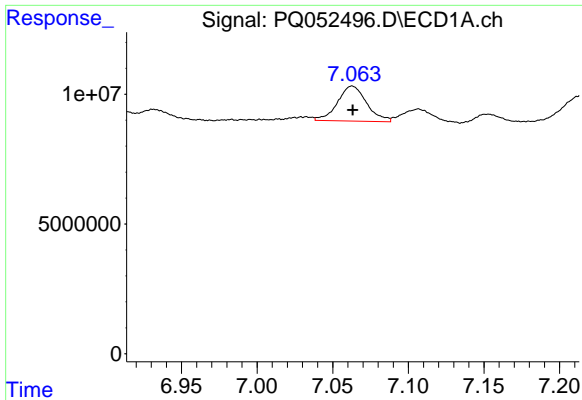
#22 AR-1248-2

R.T.: 6.842 min  
 Delta R.T.: -0.001 min  
 Response: 14033392  
 Conc: 21.00 ng/ml m



#22 AR-1248-2

R.T.: 5.766 min  
 Delta R.T.: 0.000 min  
 Response: 5301605  
 Conc: 21.41 ng/ml



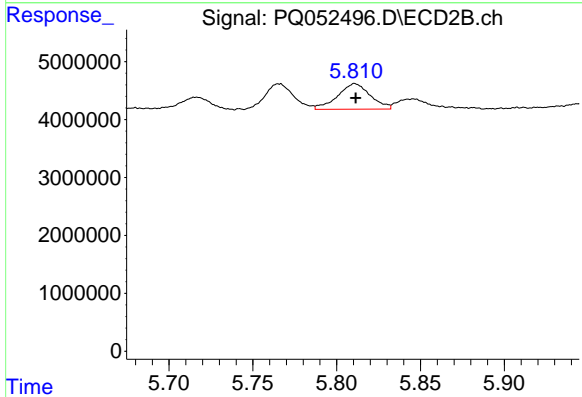
#23 AR-1248-3

R.T.: 7.063 min  
 Delta R.T.: 0.000 min  
 Response: 18163014  
 Conc: 23.46 ng/ml

Instrument :  
 ECD\_Q  
 ClientSampleId :  
 LOD-MDL-WATER-01-QT1-2021

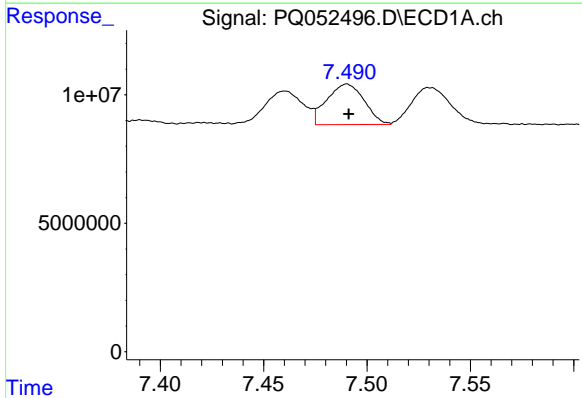
Manual Integrations  
 APPROVED

Ankita  
 3/10/2021 2:40:08 PM



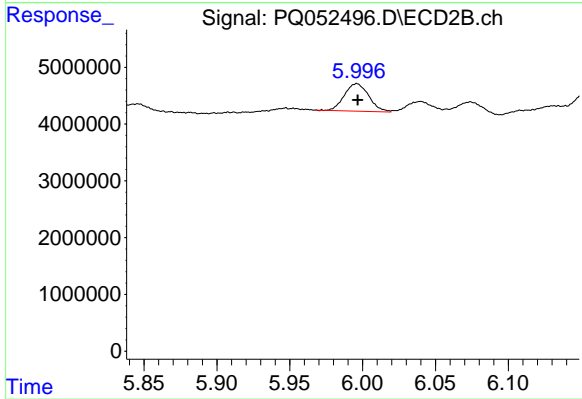
#23 AR-1248-3

R.T.: 5.811 min  
 Delta R.T.: 0.000 min  
 Response: 5998668  
 Conc: 23.36 ng/ml



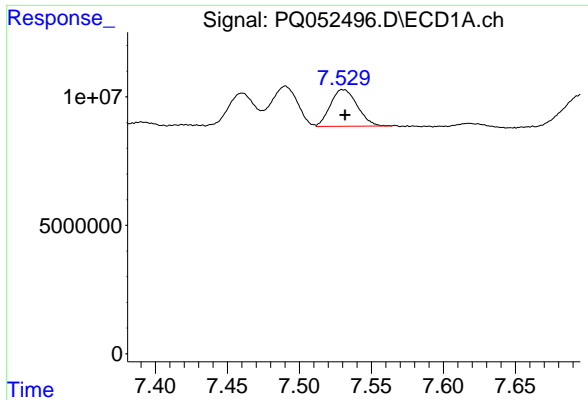
#24 AR-1248-4

R.T.: 7.490 min  
 Delta R.T.: 0.000 min  
 Response: 19876245  
 Conc: 21.59 ng/ml



#24 AR-1248-4

R.T.: 5.996 min  
 Delta R.T.: 0.000 min  
 Response: 5632182  
 Conc: 18.07 ng/ml



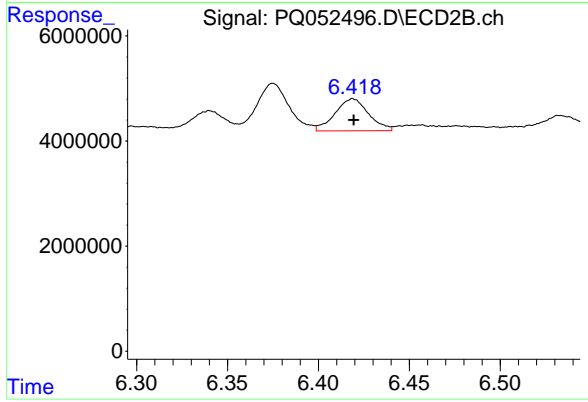
#25 AR-1248-5

R.T.: 7.530 min  
Delta R.T.: -0.002 min  
Response: 18551887  
Conc: 20.30 ng/ml

Instrument :  
ECD\_Q  
ClientSampleId :  
LOD-MDL-WATER-01-QT1-2021

Manual Integrations  
APPROVED

Ankita  
3/10/2021 2:40:08 PM



#25 AR-1248-5

R.T.: 6.419 min  
Delta R.T.: 0.000 min  
Response: 7843707  
Conc: 23.30 ng/ml