

Data Path : Z:\pestpcbsrv\HPCHEM1\ECD\_Q\Data\PQ031121\  
 Data File : PQ052536.D  
 Signal(s) : Signal #1: ECD1A.ch Signal #2: ECD2B.ch  
 Acq On : 10 Mar 2021 15:56  
 Operator : DD\AJ  
 Sample : M1458-02  
 Misc : AR1262 LOQ 50 PPB  
 ALS Vial : 11 Sample Multiplier: 1

Instrument :  
 ECD\_Q  
 ClientSampled :

Integration File signal 1: autoint1.e  
 Integration File signal 2: autoint2.e  
 Quant Time: Mar 11 06:02:09 2021  
 Quant Method : Z:\pestpcbsrv\HPCHEM1\ECD\_Q\Method\PQ031021.M  
 Quant Title : GC EXTRACTABLES  
 QLast Update : Thu Mar 11 04:11:59 2021  
 Response via : Initial Calibration  
 Integrator: ChemStation

Volume Inj. : 2 µl  
 Signal #1 Phase : ZB-MR1 Signal #2 Phase: ZB-MR2  
 Signal #1 Info : 30Mx0.32mmx 0.50µ Signal #2 Info : 30M x 0.32mm x 0.25µm

Compound	RT#1	RT#2	Resp#1	Resp#2	ng/ml	ng/ml
-----						
System Monitoring Compounds						
1) SA Tetrachlo...	5.225	4.242	449.4E6	154.8E6	17.694	17.014
2) SA Decachlor...	11.412	9.585	482.4E6	183.8E6	19.350	18.951
Target Compounds						
3) L1 AR-1016-1	6.549	5.505	1121084	259359	1.324	0.803 #
4) L1 AR-1016-2	6.549f	5.505f	1121084	259359	0.885	0.549 #
6) L1 AR-1016-4	0.000	5.768	0	727943	N.D.	3.957 #
9) L2 AR-1221-2	5.581	4.599	5275796	1723798	29.126	25.953
12) L3 AR-1232-2	0.000	5.505f	0	259359	N.D.	1.341 #
13) L3 AR-1232-3	6.549f	0.000	1121084	0	2.125	N.D. #
15) L3 AR-1232-5	6.840	0.000	1366663	0	7.588	N.D. #
16) L4 AR-1242-1	6.549	5.505	1121084	259359	1.732	1.054 #
17) L4 AR-1242-2	6.549f	5.505f	1121084	259359	1.169	0.738 #
20) L4 AR-1242-5	7.530	6.376	2579251	3452145	4.899	14.517 #
21) L5 AR-1248-1	6.549	5.505	1121084	259359	2.317	1.399 #
22) L5 AR-1248-2	6.840	5.768	1366663	727943	2.045	2.940 #
24) L5 AR-1248-4	7.489	0.000	1718587	0	1.867	N.D. #
25) L5 AR-1248-5	7.530	6.414	2579251	81336	2.823	0.242 #
26) L6 AR-1254-1	7.461	6.376	13313938	3452145	14.800	6.701 #
27) L6 AR-1254-2	7.687	6.534	9331248	3686889	6.604	8.239
28) L6 AR-1254-3	8.073	6.973f	5216589	15936752	3.361	21.551 #
29) L6 AR-1254-4	8.362	7.196	5294734	480698	4.621	0.963 #
30) L6 AR-1254-5	8.792	7.622	55323447	19288120	45.493	28.252 #
31) L7 AR-1260-1	8.236	7.092	51662200	22465435	49.546	48.188
32) L7 AR-1260-2	8.500	7.287	62018054	28985744	48.928	45.233
33) L7 AR-1260-3	8.866	7.446	81644488	26717750	85.968	48.433 #
34) L7 AR-1260-4	9.110	7.927	74256293	35436594	65.464	74.777
35) L7 AR-1260-5	9.453	8.172	148.3E6	78118530	61.978	59.341
36) L8 AR-1262-1	8.866	7.622	81644488	19288120	58.181	53.696
37) L8 AR-1262-2	9.453	8.172	148.3E6	78118530	54.124	52.824
38) L8 AR-1262-3	9.786	8.459	68166406	32175945	57.737	55.720
39) L8 AR-1262-4	9.886	8.524	78022011	53759585	56.520	52.285
40) L8 AR-1262-5	10.603	9.026	55726371	23996171	56.018	50.860
41) L9 AR-1268-1	9.786	8.459	68166406	32175945	21.756	18.816
42) L9 AR-1268-2	9.886	8.524	78022011	53759585	26.574	35.714 #
43) L9 AR-1268-3	10.132	8.732	5402385	2518308	2.130	1.954
44) L9 AR-1268-4	10.603	9.026	55726371	23996171	51.342	46.884
45) L9 AR-1268-5	11.046	9.324	25715804	10522099	2.858	2.712

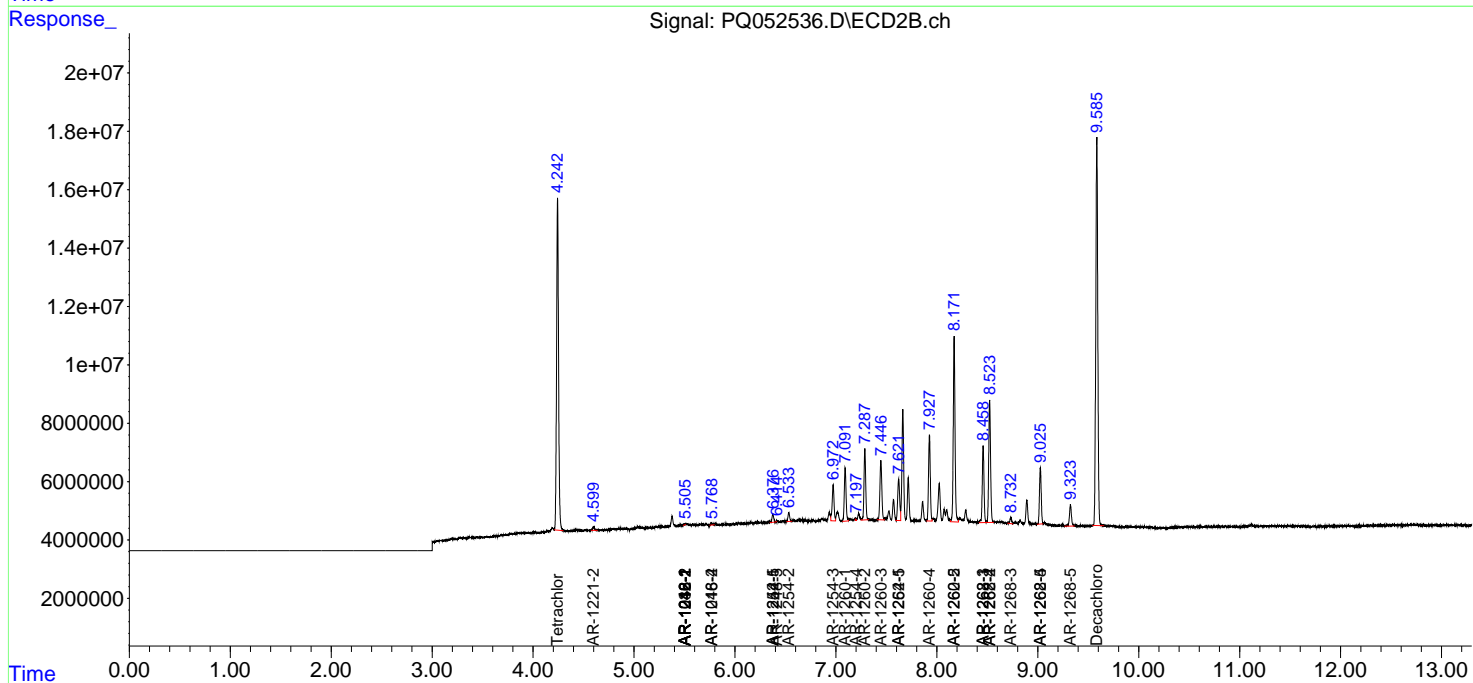
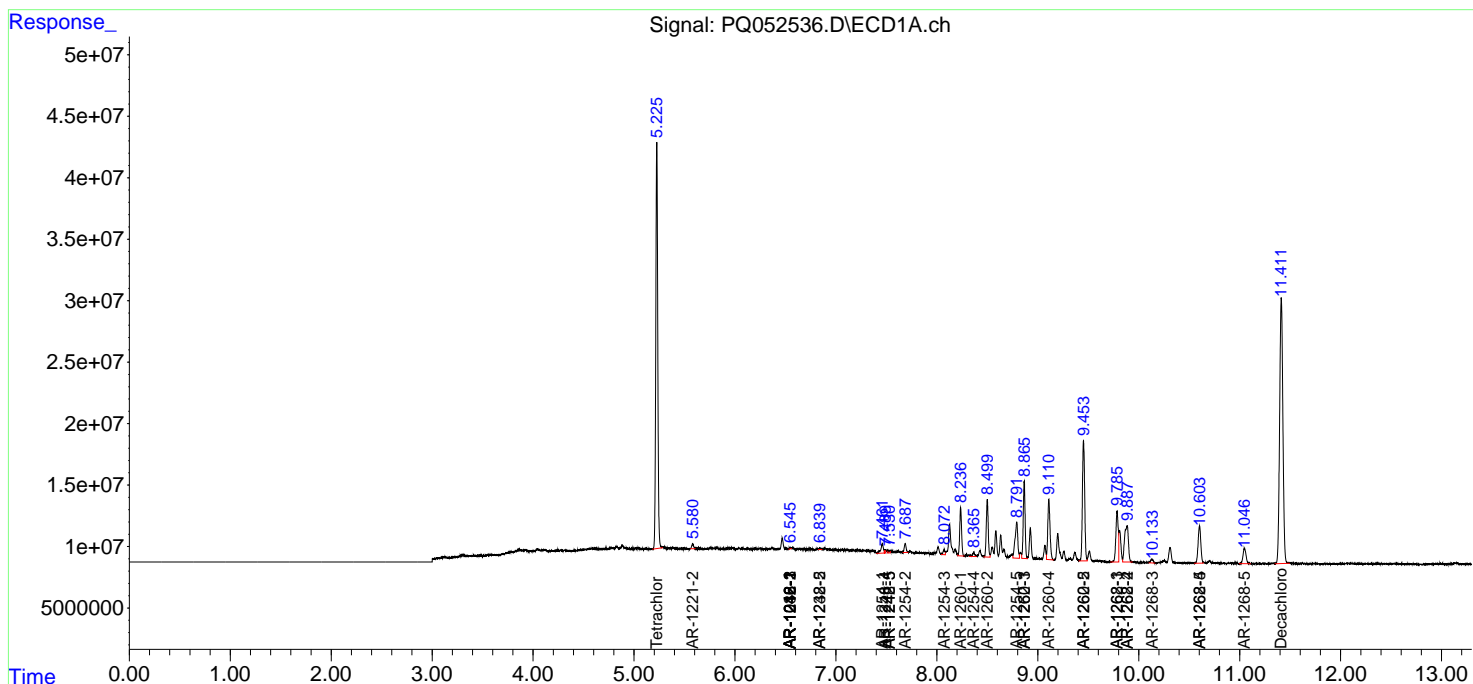
(f)=RT Delta > 1/2 Window (#)=Amounts differ by > 25% (m)=manual int.

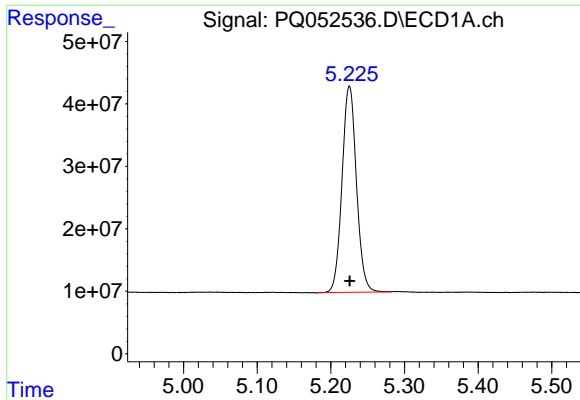
Data Path : Z:\pestpcbsrv\HPCHEM1\ECD\_Q\Data\PQ031121\  
 Data File : PQ052536.D  
 Signal(s) : Signal #1: ECD1A.ch Signal #2: ECD2B.ch  
 Acq On : 10 Mar 2021 15:56  
 Operator : DD\AJ  
 Sample : M1458-02  
 Misc : AR1262 LOQ 50 PPB  
 ALS Vial : 11 Sample Multiplier: 1

Instrument :  
 ECD\_Q  
 ClientSampled :

Integration File signal 1: autoint1.e  
 Integration File signal 2: autoint2.e  
 Quant Time: Mar 11 06:02:09 2021  
 Quant Method : Z:\pestpcbsrv\HPCHEM1\ECD\_Q\Method\PQ031021.M  
 Quant Title : GC EXTRACTABLES  
 QLast Update : Thu Mar 11 04:11:59 2021  
 Response via : Initial Calibration  
 Integrator: ChemStation

Volume Inj. : 2 µl  
 Signal #1 Phase : ZB-MR1 Signal #2 Phase: ZB-MR2  
 Signal #1 Info : 30Mx0.32mmx 0.50µ Signal #2 Info : 30M x 0.32mm x 0.25µm

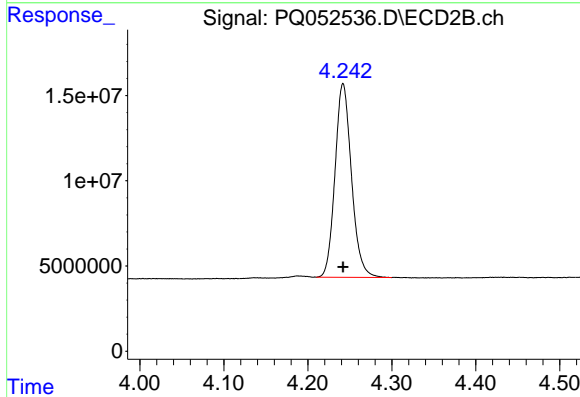




#1 Tetrachloro-m-xylene

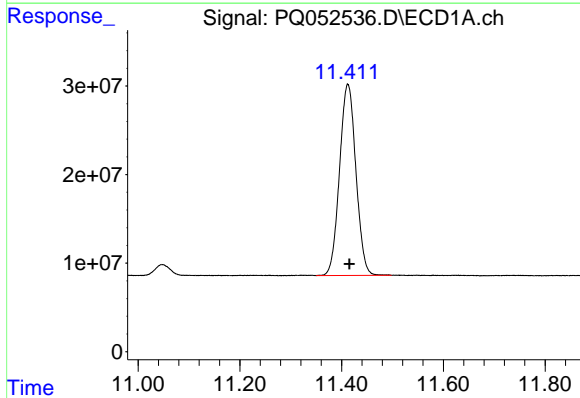
R.T.: 5.225 min  
 Delta R.T.: 0.000 min  
 Response: 449435598  
 Conc: 17.69 ng/ml

Instrument :  
 ECD\_Q  
 ClientSampleId :



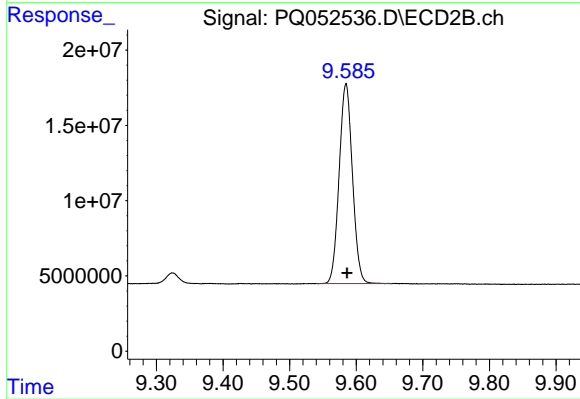
#1 Tetrachloro-m-xylene

R.T.: 4.242 min  
 Delta R.T.: 0.000 min  
 Response: 154771898  
 Conc: 17.01 ng/ml



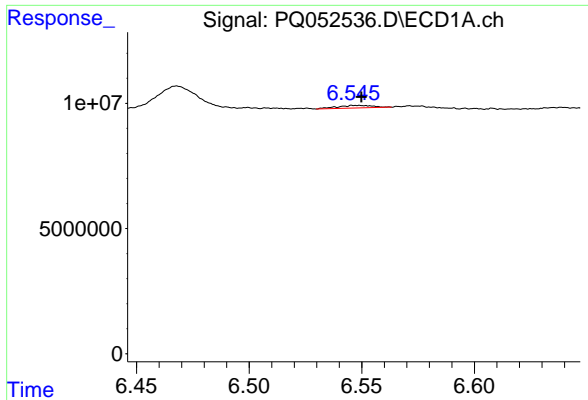
#2 Decachlorobiphenyl

R.T.: 11.412 min  
 Delta R.T.: -0.004 min  
 Response: 482386928  
 Conc: 19.35 ng/ml



#2 Decachlorobiphenyl

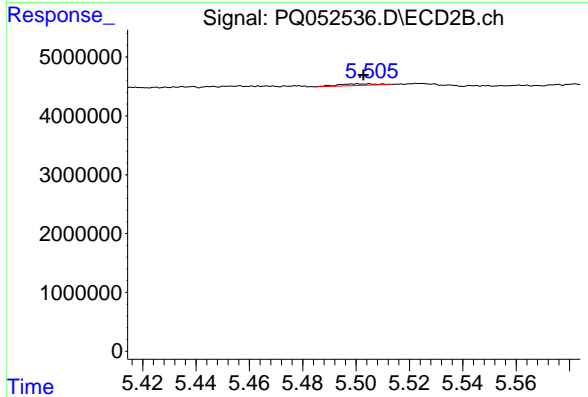
R.T.: 9.585 min  
 Delta R.T.: -0.001 min  
 Response: 183815092  
 Conc: 18.95 ng/ml



#3 AR-1016-1

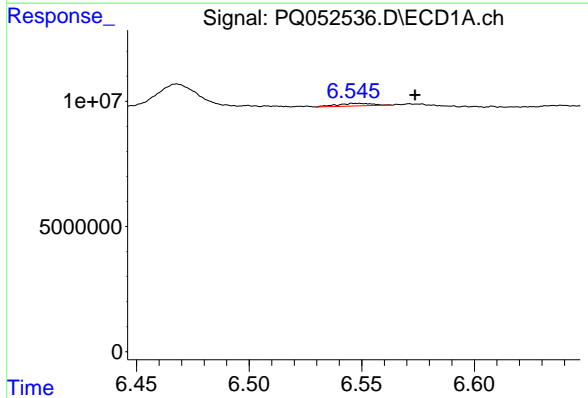
R.T.: 6.549 min  
 Delta R.T.: 0.000 min  
 Response: 1121084  
 Conc: 1.32 ng/ml

Instrument :  
 ECD\_Q  
 ClientSampleId :



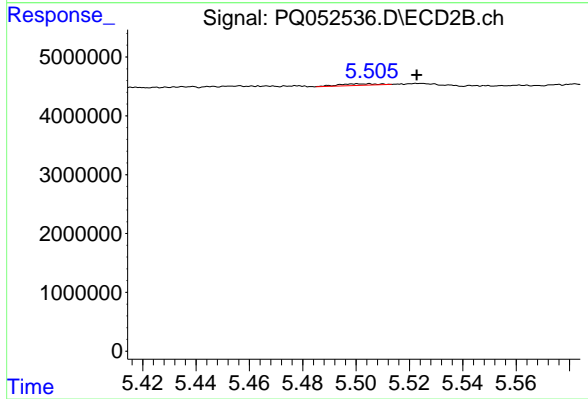
#3 AR-1016-1

R.T.: 5.505 min  
 Delta R.T.: 0.002 min  
 Response: 259359  
 Conc: 0.80 ng/ml



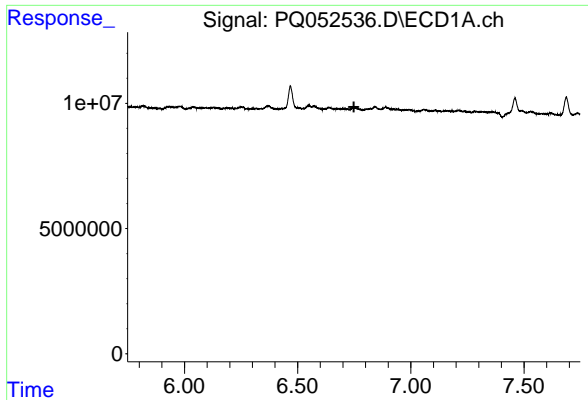
#4 AR-1016-2

R.T.: 6.549 min  
 Delta R.T.: -0.025 min  
 Response: 1121084  
 Conc: 0.88 ng/ml



#4 AR-1016-2

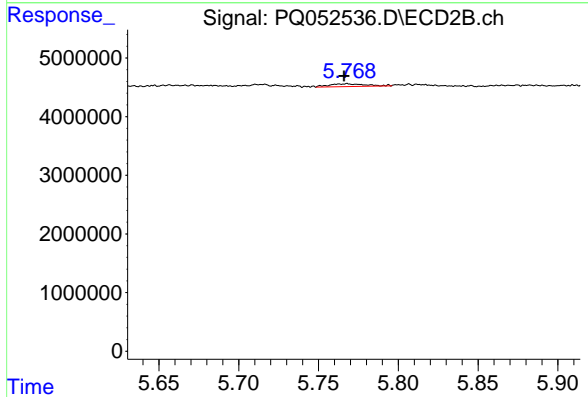
R.T.: 5.505 min  
 Delta R.T.: -0.018 min  
 Response: 259359  
 Conc: 0.55 ng/ml



#6 AR-1016-4

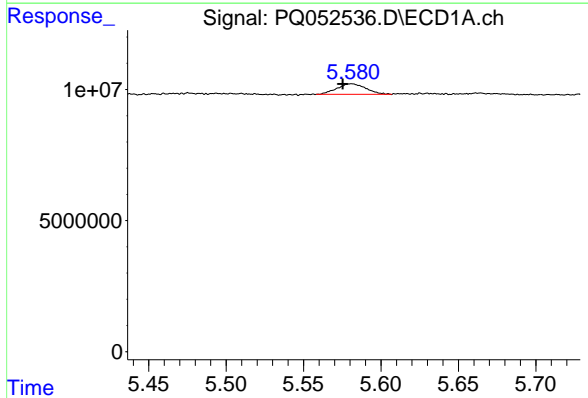
R.T.: 0.000 min  
 Exp R.T.: 6.749 min  
 Response: 0  
 Conc: N.D.

Instrument :  
 ECD\_Q  
 ClientSampleId :



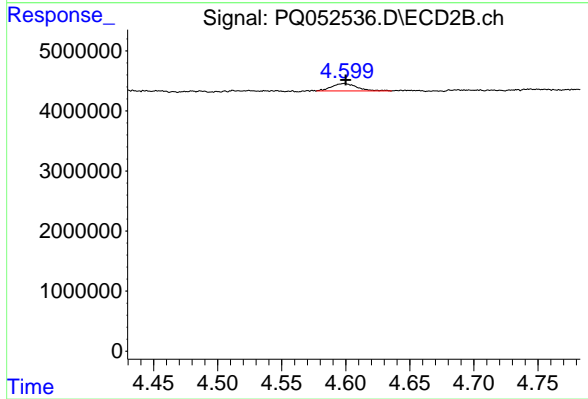
#6 AR-1016-4

R.T.: 5.768 min  
 Delta R.T.: 0.002 min  
 Response: 727943  
 Conc: 3.96 ng/ml



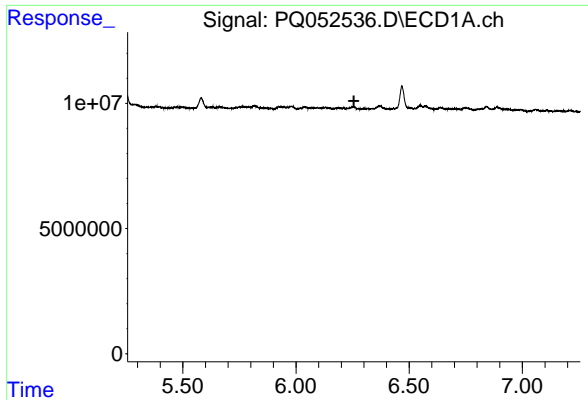
#9 AR-1221-2

R.T.: 5.581 min  
 Delta R.T.: 0.006 min  
 Response: 5275796  
 Conc: 29.13 ng/ml



#9 AR-1221-2

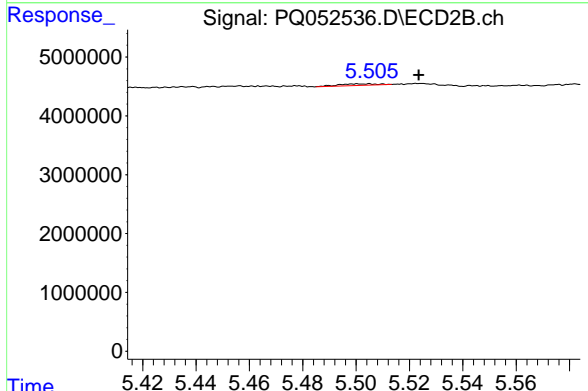
R.T.: 4.599 min  
 Delta R.T.: -0.001 min  
 Response: 1723798  
 Conc: 25.95 ng/ml



#12 AR-1232-2

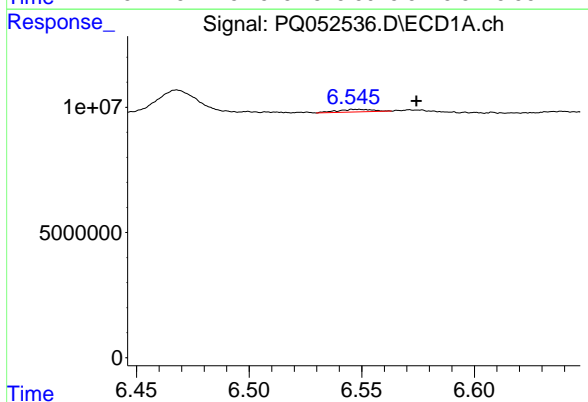
R.T.: 0.000 min  
 Exp R.T.: 6.256 min  
 Response: 0  
 Conc: N.D.

Instrument :  
 ECD\_Q  
 ClientSampleId :



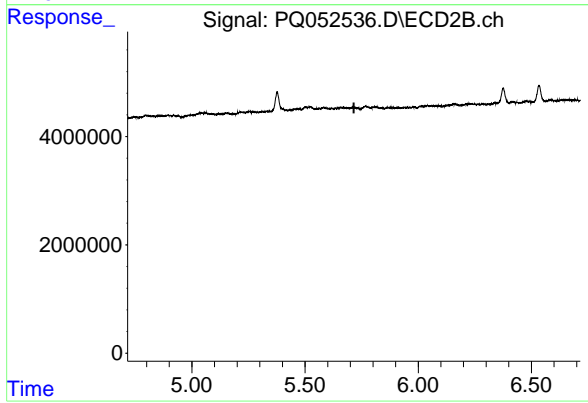
#12 AR-1232-2

R.T.: 5.505 min  
 Delta R.T.: -0.018 min  
 Response: 259359  
 Conc: 1.34 ng/ml



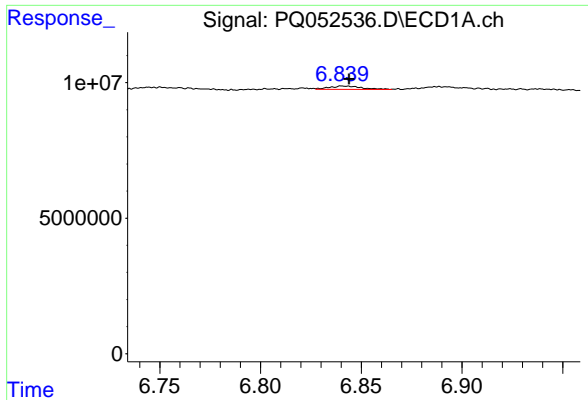
#13 AR-1232-3

R.T.: 6.549 min  
 Delta R.T.: -0.025 min  
 Response: 1121084  
 Conc: 2.13 ng/ml



#13 AR-1232-3

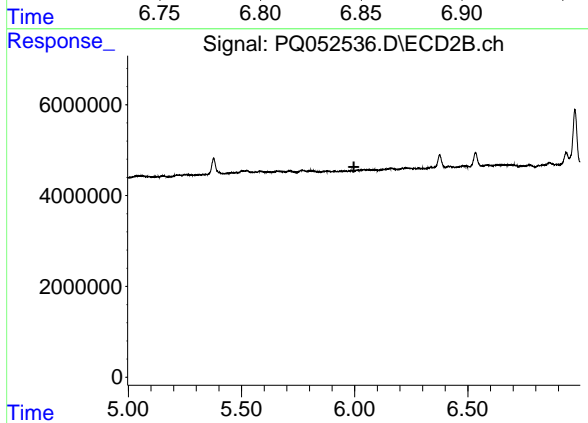
R.T.: 0.000 min  
 Exp R.T.: 5.716 min  
 Response: 0  
 Conc: N.D.



#15 AR-1232-5

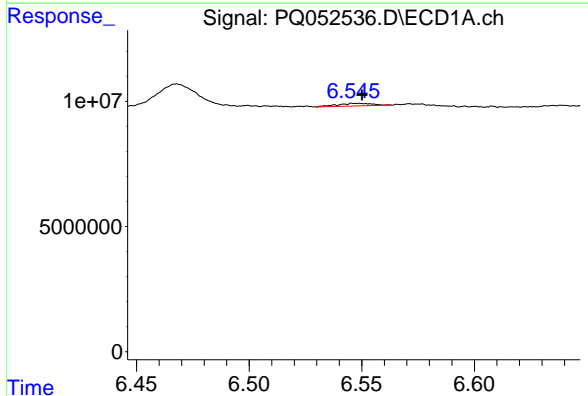
R.T.: 6.840 min  
 Delta R.T.: -0.004 min  
 Response: 1366663  
 Conc: 7.59 ng/ml

Instrument :  
 ECD\_Q  
 ClientSampleId :



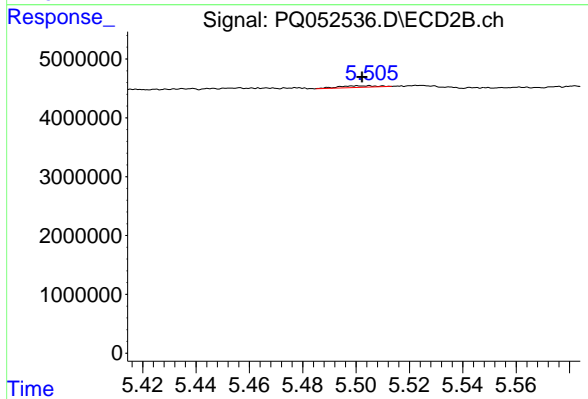
#15 AR-1232-5

R.T.: 0.000 min  
 Exp R.T. : 5.996 min  
 Response: 0  
 Conc: N.D.



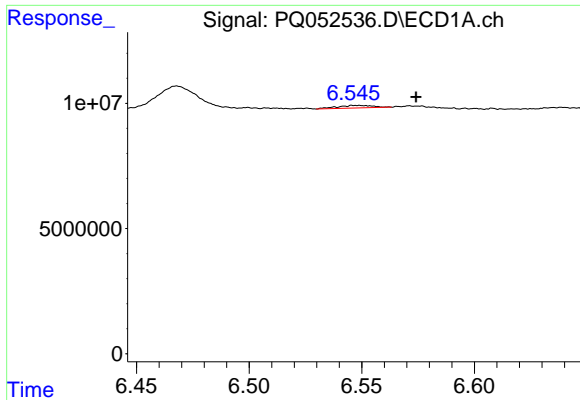
#16 AR-1242-1

R.T.: 6.549 min  
 Delta R.T.: -0.001 min  
 Response: 1121084  
 Conc: 1.73 ng/ml



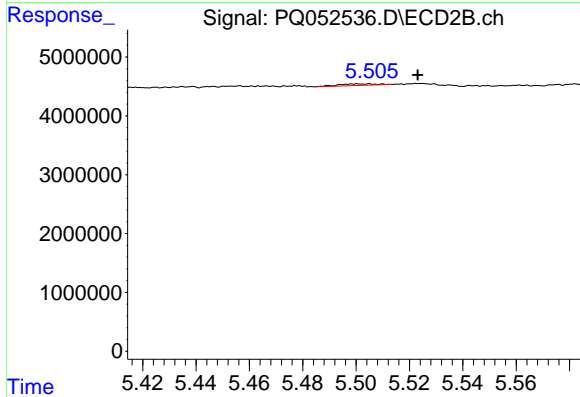
#16 AR-1242-1

R.T.: 5.505 min  
 Delta R.T.: 0.003 min  
 Response: 259359  
 Conc: 1.05 ng/ml

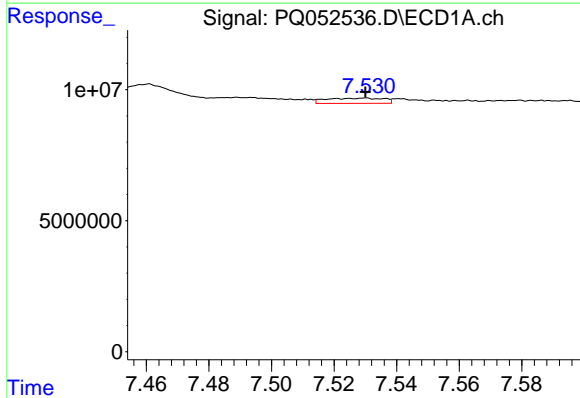


#17 AR-1242-2  
 R.T.: 6.549 min  
 Delta R.T.: -0.025 min  
 Response: 1121084  
 Conc: 1.17 ng/ml

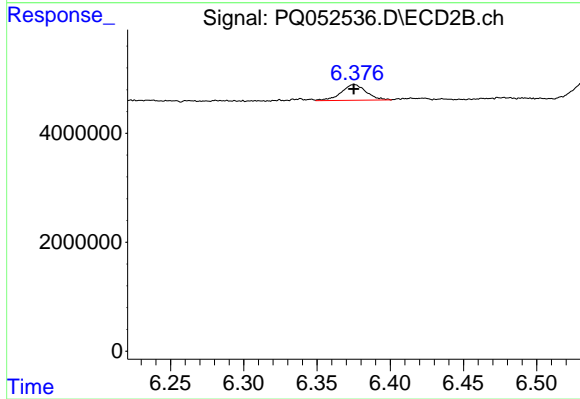
Instrument :  
 ECD\_Q  
 ClientSampleId :



#17 AR-1242-2  
 R.T.: 5.505 min  
 Delta R.T.: -0.018 min  
 Response: 259359  
 Conc: 0.74 ng/ml

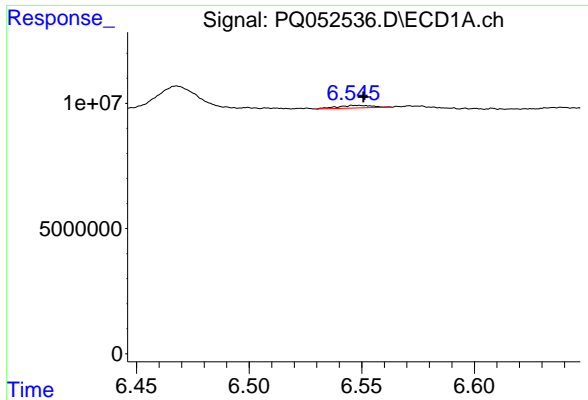


#20 AR-1242-5  
 R.T.: 7.530 min  
 Delta R.T.: 0.000 min  
 Response: 2579251  
 Conc: 4.90 ng/ml



#20 AR-1242-5  
 R.T.: 6.376 min  
 Delta R.T.: 0.000 min  
 Response: 3452145  
 Conc: 14.52 ng/ml

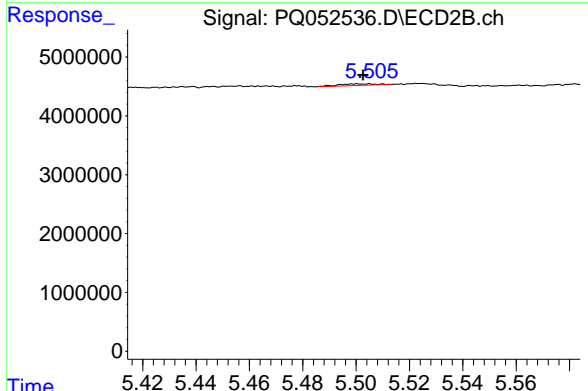




#21 AR-1248-1

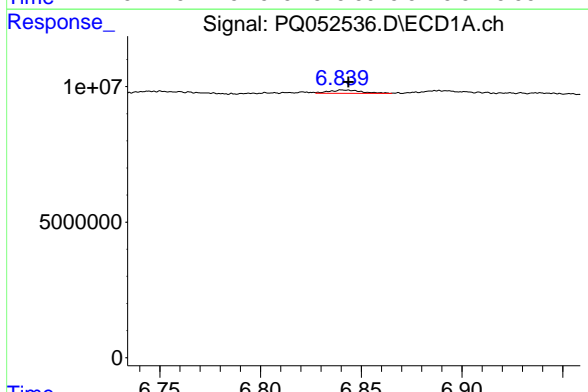
R.T.: 6.549 min  
 Delta R.T.: -0.002 min  
 Response: 1121084  
 Conc: 2.32 ng/ml

Instrument :  
 ECD\_Q  
 ClientSampled :



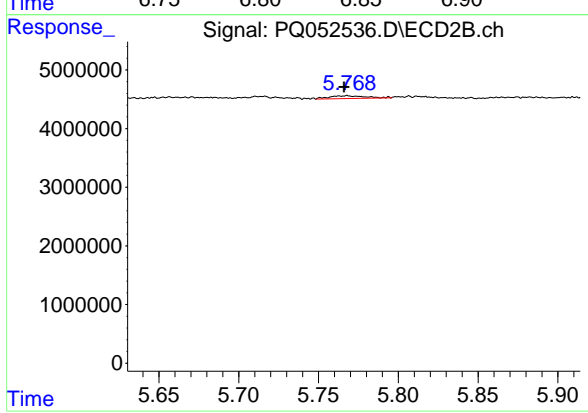
#21 AR-1248-1

R.T.: 5.505 min  
 Delta R.T.: 0.003 min  
 Response: 259359  
 Conc: 1.40 ng/ml



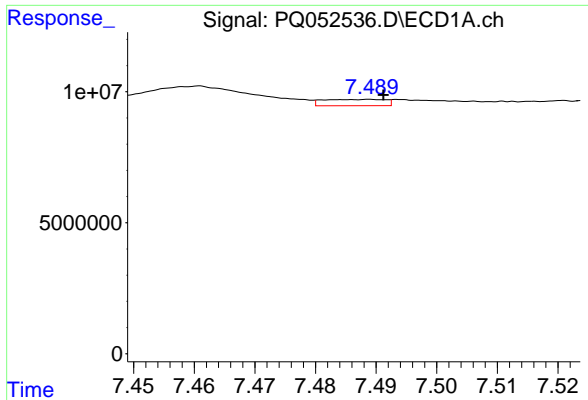
#22 AR-1248-2

R.T.: 6.840 min  
 Delta R.T.: -0.003 min  
 Response: 1366663  
 Conc: 2.04 ng/ml



#22 AR-1248-2

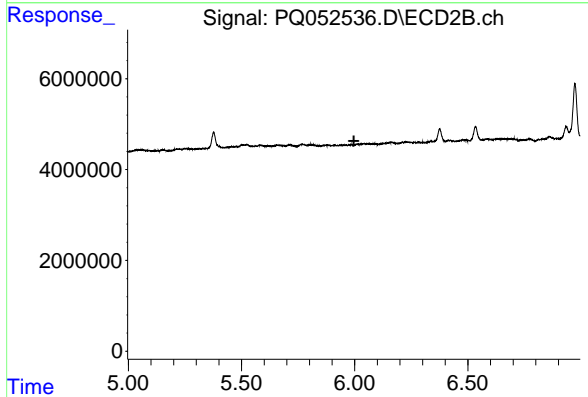
R.T.: 5.768 min  
 Delta R.T.: 0.002 min  
 Response: 727943  
 Conc: 2.94 ng/ml



#24 AR-1248-4

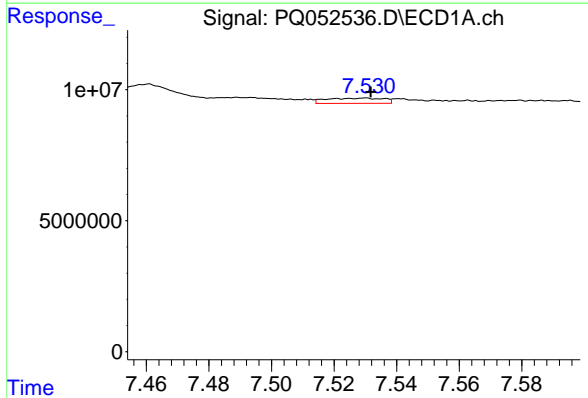
R.T.: 7.489 min  
 Delta R.T.: -0.002 min  
 Response: 1718587  
 Conc: 1.87 ng/ml

Instrument :  
 ECD\_Q  
 ClientSampleId :



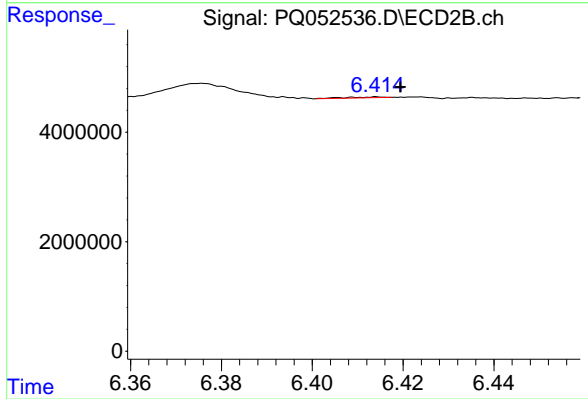
#24 AR-1248-4

R.T.: 0.000 min  
 Exp R.T. : 5.997 min  
 Response: 0  
 Conc: N.D.



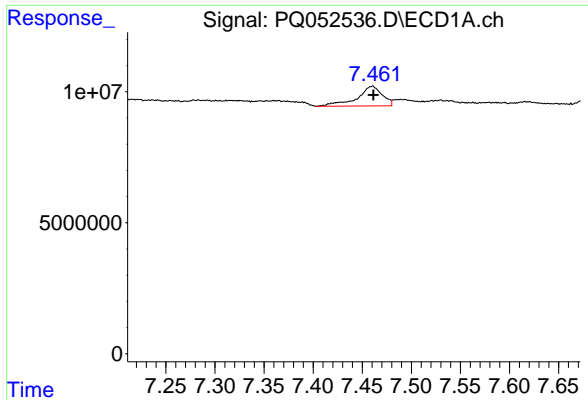
#25 AR-1248-5

R.T.: 7.530 min  
 Delta R.T.: -0.001 min  
 Response: 2579251  
 Conc: 2.82 ng/ml



#25 AR-1248-5

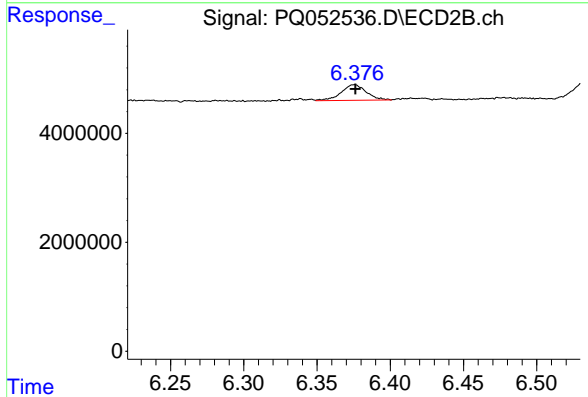
R.T.: 6.414 min  
 Delta R.T.: -0.005 min  
 Response: 81336  
 Conc: 0.24 ng/ml



#26 AR-1254-1

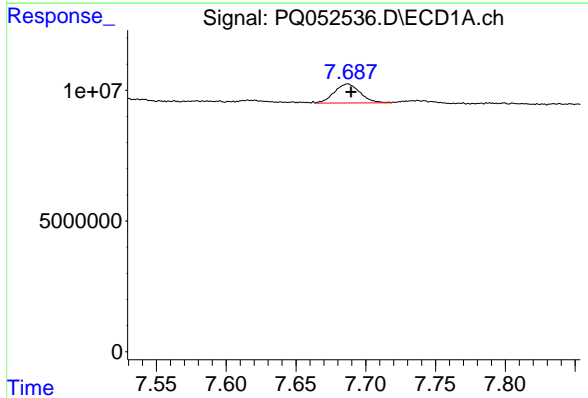
R.T.: 7.461 min  
 Delta R.T.: 0.000 min  
 Response: 13313938  
 Conc: 14.80 ng/ml

Instrument :  
 ECD\_Q  
 ClientSampleId :



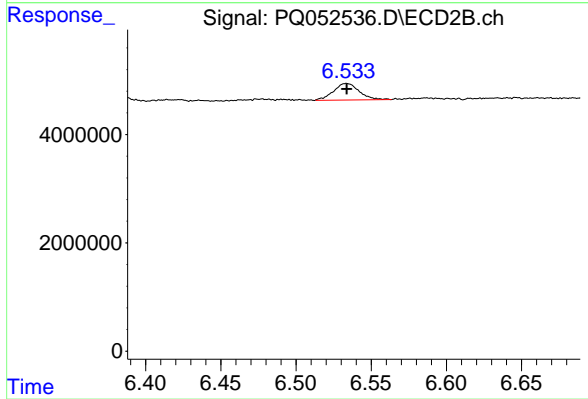
#26 AR-1254-1

R.T.: 6.376 min  
 Delta R.T.: 0.000 min  
 Response: 3452145  
 Conc: 6.70 ng/ml



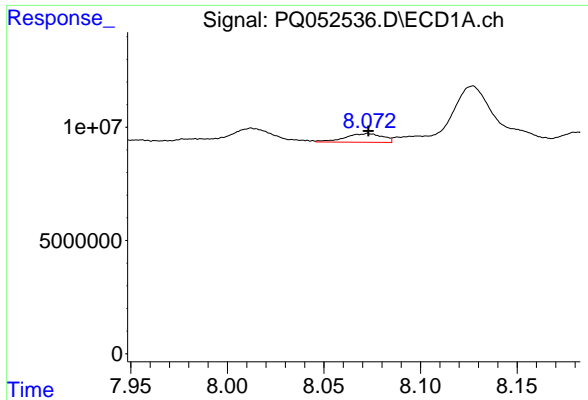
#27 AR-1254-2

R.T.: 7.687 min  
 Delta R.T.: -0.002 min  
 Response: 9331248  
 Conc: 6.60 ng/ml



#27 AR-1254-2

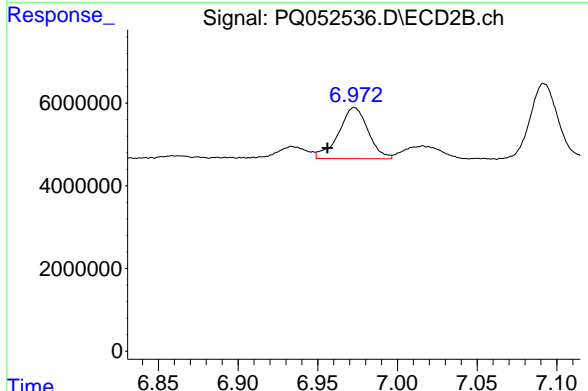
R.T.: 6.534 min  
 Delta R.T.: 0.000 min  
 Response: 3686889  
 Conc: 8.24 ng/ml



#28 AR-1254-3

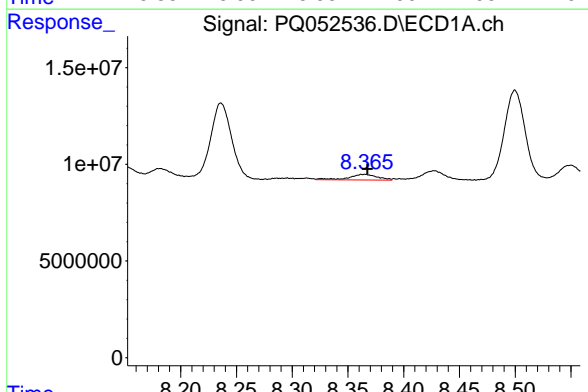
R.T.: 8.073 min  
 Delta R.T.: 0.000 min  
 Response: 5216589  
 Conc: 3.36 ng/ml

Instrument :  
 ECD\_Q  
 ClientSampled :



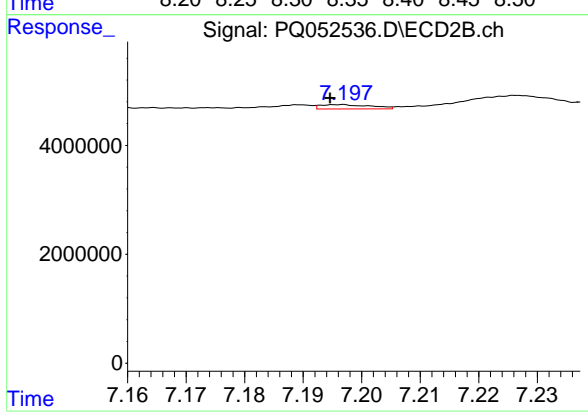
#28 AR-1254-3

R.T.: 6.973 min  
 Delta R.T.: 0.017 min  
 Response: 15936752  
 Conc: 21.55 ng/ml



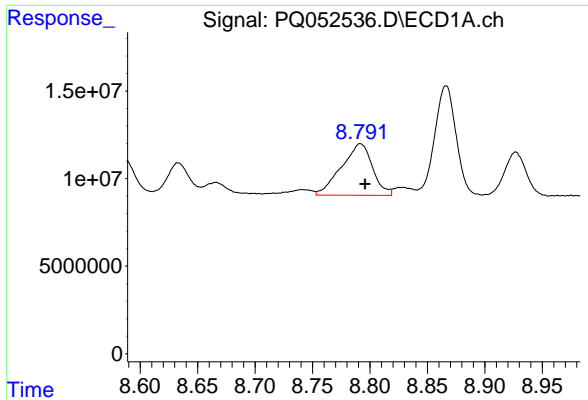
#29 AR-1254-4

R.T.: 8.362 min  
 Delta R.T.: -0.005 min  
 Response: 5294734  
 Conc: 4.62 ng/ml



#29 AR-1254-4

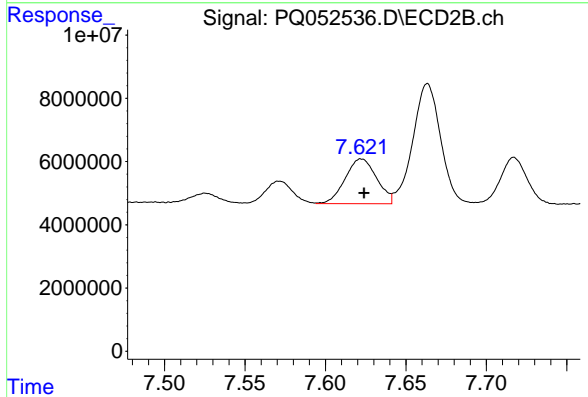
R.T.: 7.196 min  
 Delta R.T.: 0.002 min  
 Response: 480698  
 Conc: 0.96 ng/ml



#30 AR-1254-5

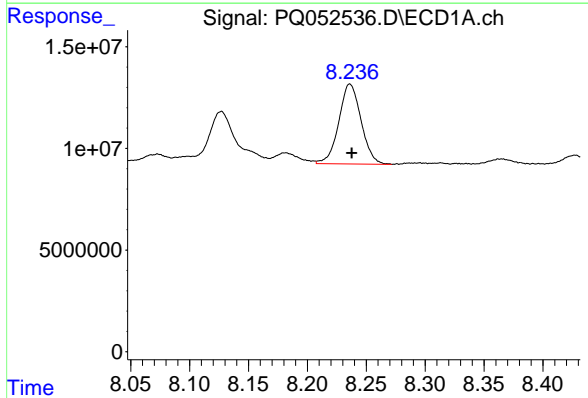
R.T.: 8.792 min  
 Delta R.T.: -0.004 min  
 Response: 55323447  
 Conc: 45.49 ng/ml

Instrument :  
 ECD\_Q  
 ClientSampled :



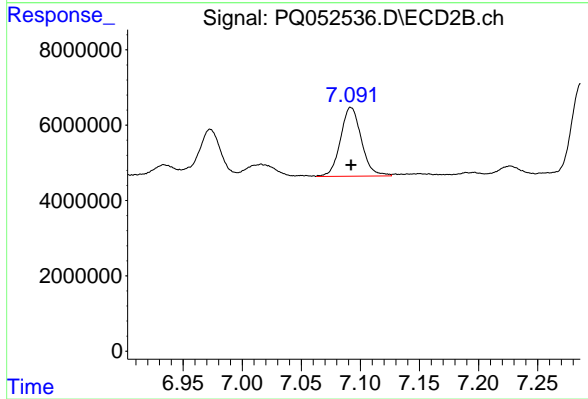
#30 AR-1254-5

R.T.: 7.622 min  
 Delta R.T.: -0.002 min  
 Response: 19288120  
 Conc: 28.25 ng/ml



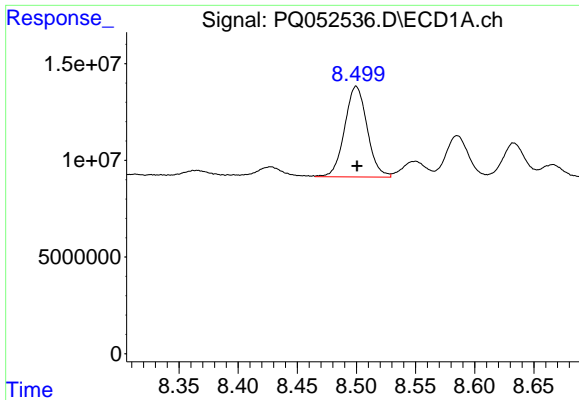
#31 AR-1260-1

R.T.: 8.236 min  
 Delta R.T.: -0.002 min  
 Response: 51662200  
 Conc: 49.55 ng/ml



#31 AR-1260-1

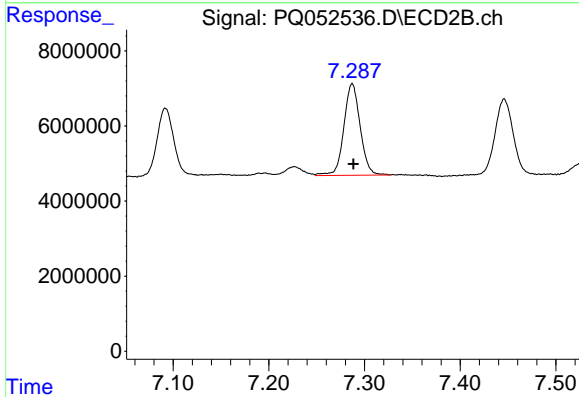
R.T.: 7.092 min  
 Delta R.T.: 0.000 min  
 Response: 22465435  
 Conc: 48.19 ng/ml



#32 AR-1260-2

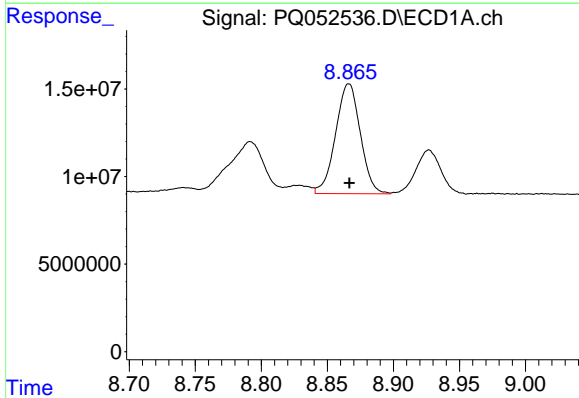
R.T.: 8.500 min  
 Delta R.T.: 0.000 min  
 Response: 62018054  
 Conc: 48.93 ng/ml

Instrument :  
 ECD\_Q  
 ClientSampleId :



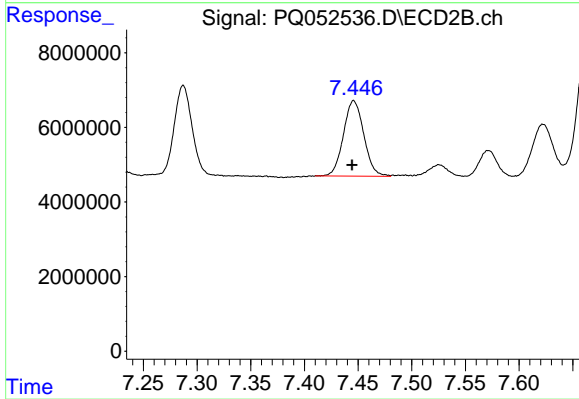
#32 AR-1260-2

R.T.: 7.287 min  
 Delta R.T.: -0.001 min  
 Response: 28985744  
 Conc: 45.23 ng/ml



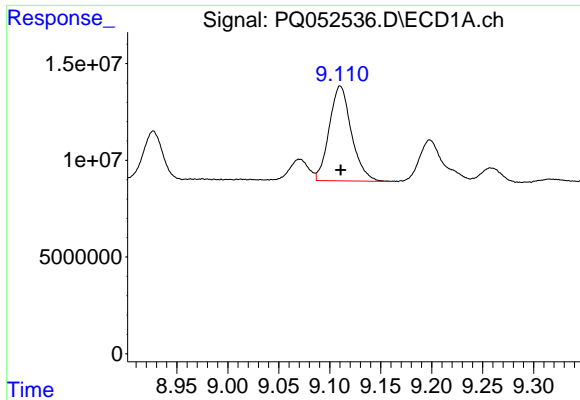
#33 AR-1260-3

R.T.: 8.866 min  
 Delta R.T.: 0.000 min  
 Response: 81644488  
 Conc: 85.97 ng/ml



#33 AR-1260-3

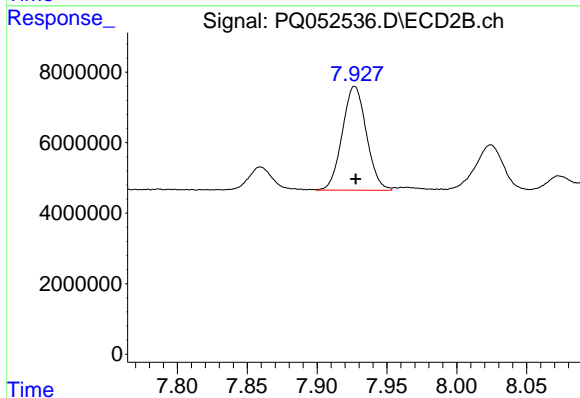
R.T.: 7.446 min  
 Delta R.T.: 0.002 min  
 Response: 26717750  
 Conc: 48.43 ng/ml



#34 AR-1260-4

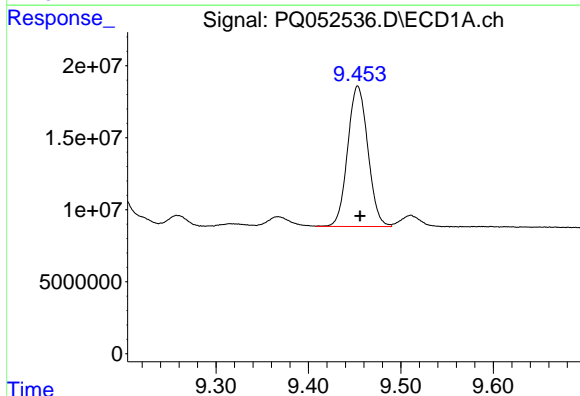
R.T.: 9.110 min  
 Delta R.T.: 0.000 min  
 Response: 74256293  
 Conc: 65.46 ng/ml

Instrument :  
 ECD\_Q  
 ClientSampled :



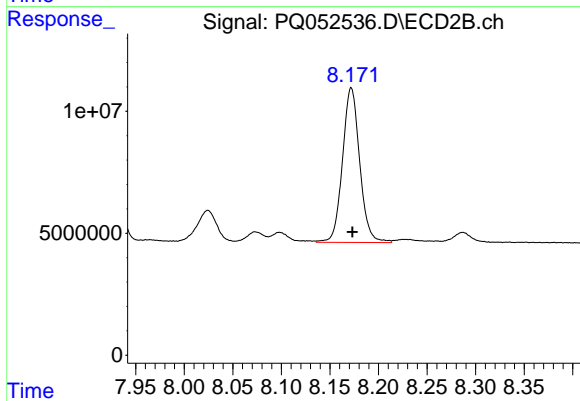
#34 AR-1260-4

R.T.: 7.927 min  
 Delta R.T.: 0.000 min  
 Response: 35436594  
 Conc: 74.78 ng/ml



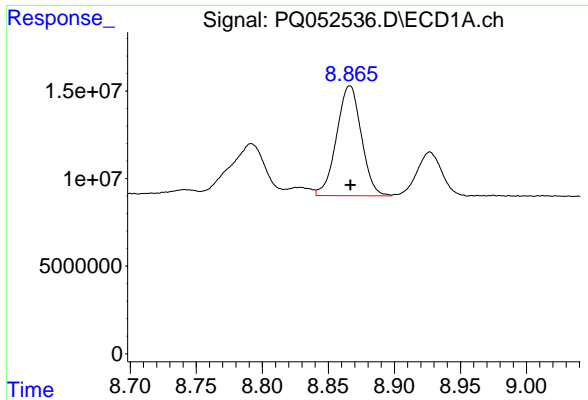
#35 AR-1260-5

R.T.: 9.453 min  
 Delta R.T.: -0.003 min  
 Response: 148279476  
 Conc: 61.98 ng/ml



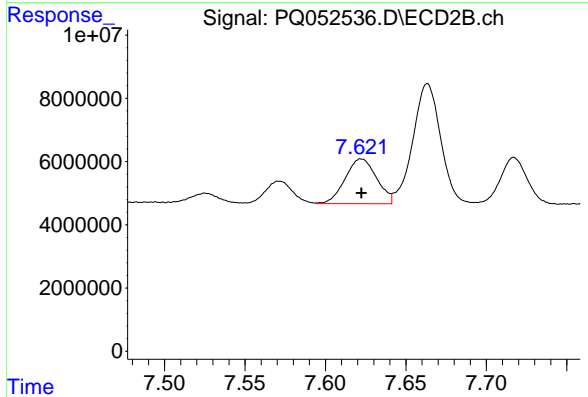
#35 AR-1260-5

R.T.: 8.172 min  
 Delta R.T.: -0.001 min  
 Response: 78118530  
 Conc: 59.34 ng/ml

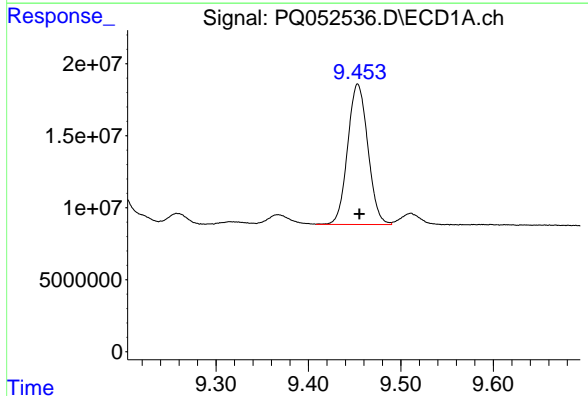


#36 AR-1262-1  
 R.T.: 8.866 min  
 Delta R.T.: 0.000 min  
 Response: 81644488  
 Conc: 58.18 ng/ml

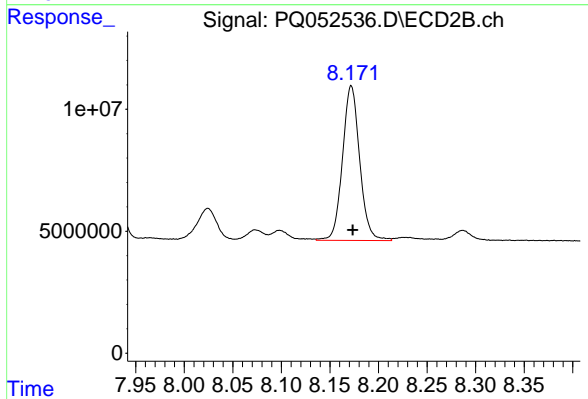
Instrument :  
 ECD\_Q  
 ClientSampled :



#36 AR-1262-1  
 R.T.: 7.622 min  
 Delta R.T.: 0.000 min  
 Response: 19288120  
 Conc: 53.70 ng/ml

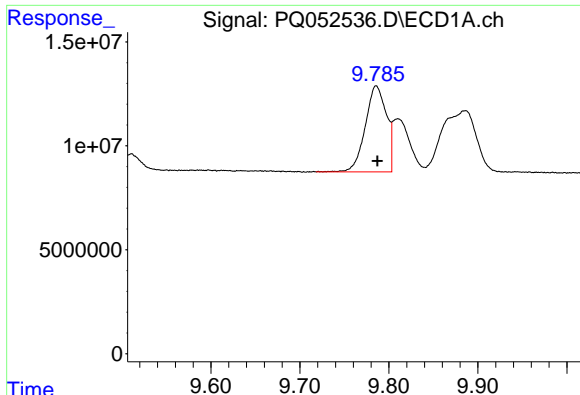


#37 AR-1262-2  
 R.T.: 9.453 min  
 Delta R.T.: -0.002 min  
 Response: 148279476  
 Conc: 54.12 ng/ml



#37 AR-1262-2  
 R.T.: 8.172 min  
 Delta R.T.: -0.001 min  
 Response: 78118530  
 Conc: 52.82 ng/ml

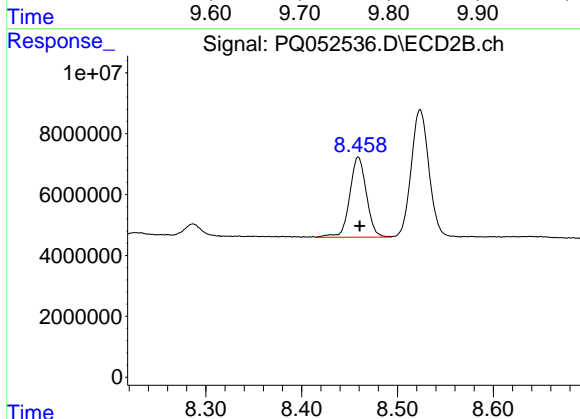




#38 AR-1262-3

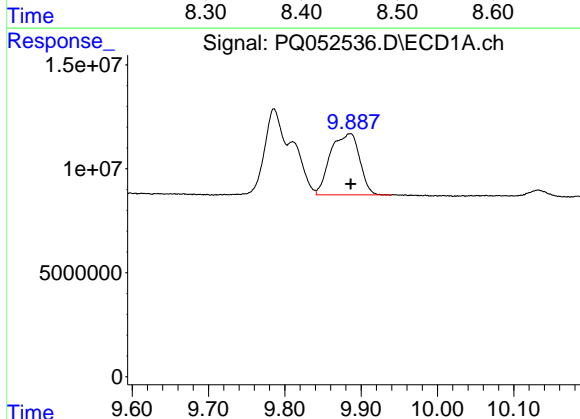
R.T.: 9.786 min  
 Delta R.T.: -0.002 min  
 Response: 68166406  
 Conc: 57.74 ng/ml

Instrument :  
 ECD\_Q  
 ClientSampled :



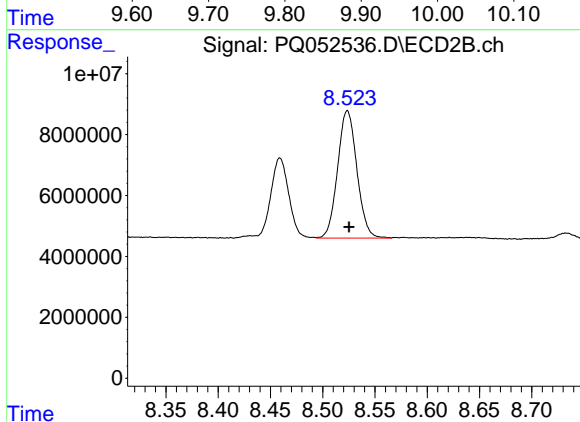
#38 AR-1262-3

R.T.: 8.459 min  
 Delta R.T.: -0.001 min  
 Response: 32175945  
 Conc: 55.72 ng/ml



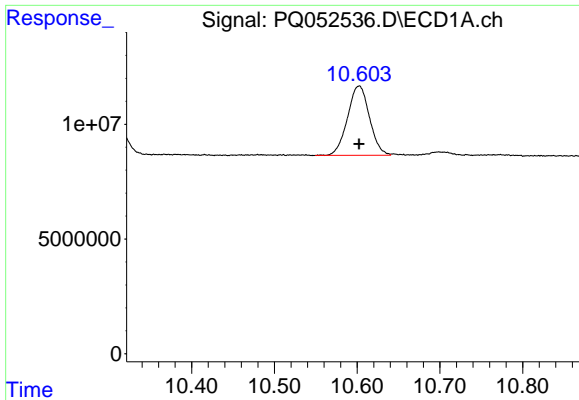
#39 AR-1262-4

R.T.: 9.886 min  
 Delta R.T.: 0.000 min  
 Response: 78022011  
 Conc: 56.52 ng/ml



#39 AR-1262-4

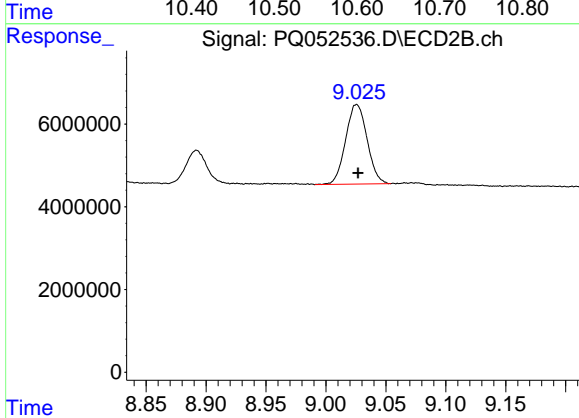
R.T.: 8.524 min  
 Delta R.T.: -0.001 min  
 Response: 53759585  
 Conc: 52.28 ng/ml



#40 AR-1262-5

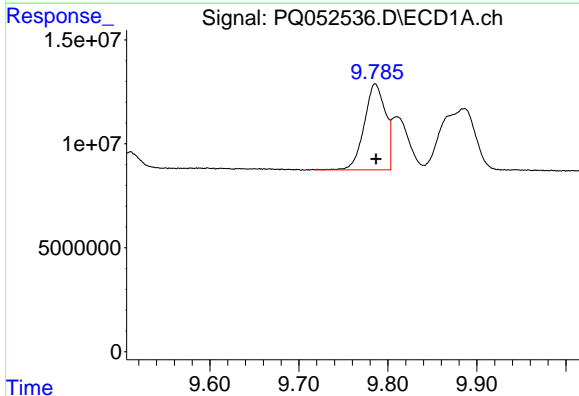
R.T.: 10.603 min  
 Delta R.T.: 0.000 min  
 Response: 55726371  
 Conc: 56.02 ng/ml

Instrument :  
 ECD\_Q  
 ClientSampled :



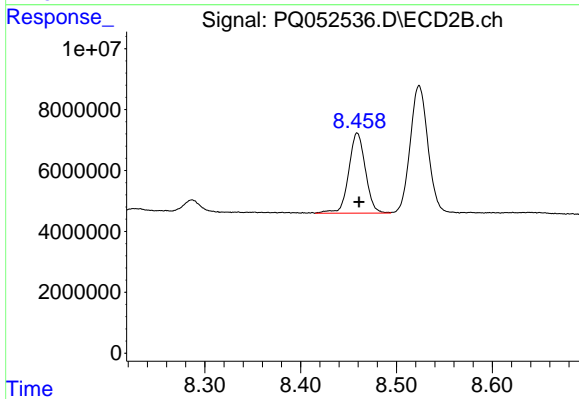
#40 AR-1262-5

R.T.: 9.026 min  
 Delta R.T.: -0.001 min  
 Response: 23996171  
 Conc: 50.86 ng/ml



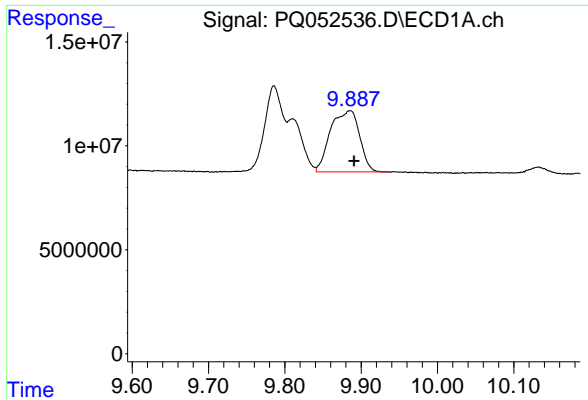
#41 AR-1268-1

R.T.: 9.786 min  
 Delta R.T.: -0.001 min  
 Response: 68166406  
 Conc: 21.76 ng/ml



#41 AR-1268-1

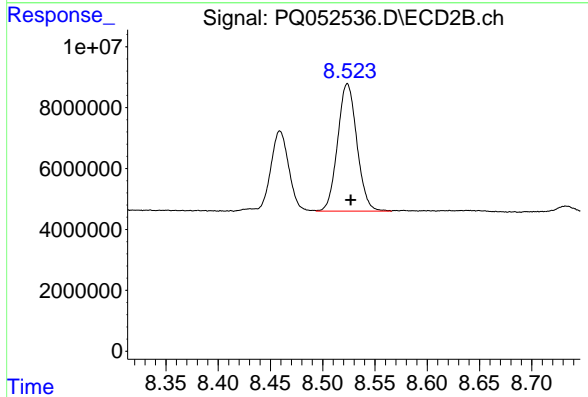
R.T.: 8.459 min  
 Delta R.T.: -0.002 min  
 Response: 32175945  
 Conc: 18.82 ng/ml



#42 AR-1268-2

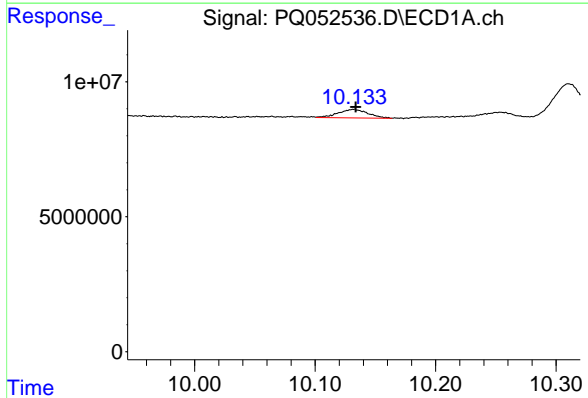
R.T.: 9.886 min  
 Delta R.T.: -0.004 min  
 Response: 78022011  
 Conc: 26.57 ng/ml

Instrument :  
 ECD\_Q  
 ClientSampleId :



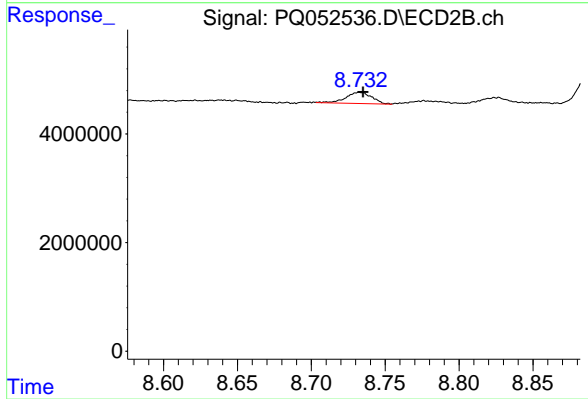
#42 AR-1268-2

R.T.: 8.524 min  
 Delta R.T.: -0.003 min  
 Response: 53759585  
 Conc: 35.71 ng/ml



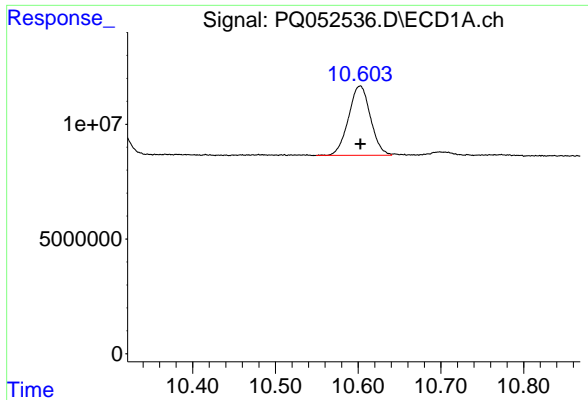
#43 AR-1268-3

R.T.: 10.132 min  
 Delta R.T.: -0.001 min  
 Response: 5402385  
 Conc: 2.13 ng/ml



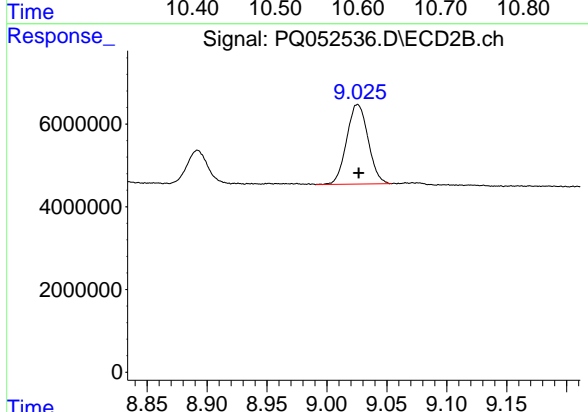
#43 AR-1268-3

R.T.: 8.732 min  
 Delta R.T.: -0.003 min  
 Response: 2518308  
 Conc: 1.95 ng/ml

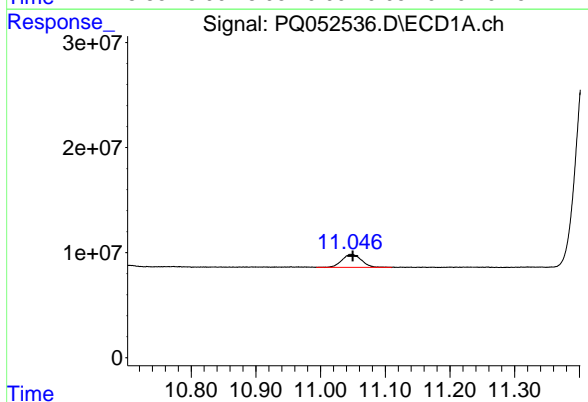


#44 AR-1268-4  
 R.T.: 10.603 min  
 Delta R.T.: 0.000 min  
 Response: 55726371  
 Conc: 51.34 ng/ml

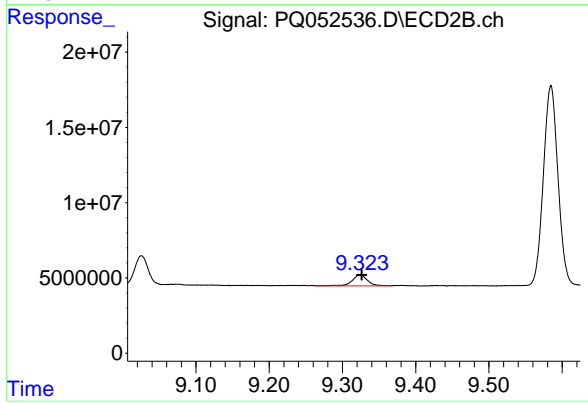
Instrument :  
 ECD\_Q  
 ClientSampled :



#44 AR-1268-4  
 R.T.: 9.026 min  
 Delta R.T.: 0.000 min  
 Response: 23996171  
 Conc: 46.88 ng/ml



#45 AR-1268-5  
 R.T.: 11.046 min  
 Delta R.T.: -0.004 min  
 Response: 25715804  
 Conc: 2.86 ng/ml



#45 AR-1268-5  
 R.T.: 9.324 min  
 Delta R.T.: -0.003 min  
 Response: 10522099  
 Conc: 2.71 ng/ml