

Data Path : Z:\pestpcbsrv\HPCHEM1\ECD_Q\Data\PQ031121\
 Data File : PQ052530.D
 Signal(s) : Signal #1: ECD1A.ch Signal #2: ECD2B.ch
 Acq On : 10 Mar 2021 13:27
 Operator : DD\AJ
 Sample : M1458-02
 Misc : AR1660 LOQ 50 PPB
 ALS Vial : 5 Sample Multiplier: 1

Instrument :
 ECD_Q
ClientSampleId :
 LOQ-SOIL-02-QT1-2021

Integration File signal 1: autoint1.e
 Integration File signal 2: autoint2.e
 Quant Time: Mar 11 05:58:01 2021
 Quant Method : Z:\pestpcbsrv\HPCHEM1\ECD_Q\Method\PQ031021.M
 Quant Title : GC EXTRACTABLES
 QLast Update : Thu Mar 11 04:11:59 2021
 Response via : Initial Calibration
 Integrator: ChemStation

Volume Inj. : 2 µl
 Signal #1 Phase : ZB-MR1 Signal #2 Phase: ZB-MR2
 Signal #1 Info : 30Mx0.32mmx 0.50µ Signal #2 Info : 30M x 0.32mm x 0.25µm

Compound	RT#1	RT#2	Resp#1	Resp#2	ng/ml	ng/ml

System Monitoring Compounds						
1) SA Tetrachlo...	5.226	4.242	407.6E6	140.4E6	16.046	15.439
2) SA Decachlor...	11.414	9.584	446.8E6	170.0E6	17.924	17.523
Target Compounds						
3) L1 AR-1016-1	6.551	5.502	44576349	13744367	52.655	42.536
4) L1 AR-1016-2	6.574	5.522	58895097	19956677	46.490	42.239
5) L1 AR-1016-3	6.641	5.715	35525704	11819485	47.534	48.911
6) L1 AR-1016-4	6.748	5.766	28424425	8469033	45.303	46.042
7) L1 AR-1016-5	7.062	5.996	27947134	10370827	47.896	42.698
31) L7 AR-1260-1	8.236	7.092	50092716	22258748	48.041	47.744
32) L7 AR-1260-2	8.500	7.287	61792772	29888260	48.751	46.641
33) L7 AR-1260-3	8.866	7.444	45419213	25600861	47.824	46.409
34) L7 AR-1260-4	9.109	7.926	51088821	21957755	45.039	46.334
35) L7 AR-1260-5	9.454	8.172	107.2E6	58058042	44.807	44.102

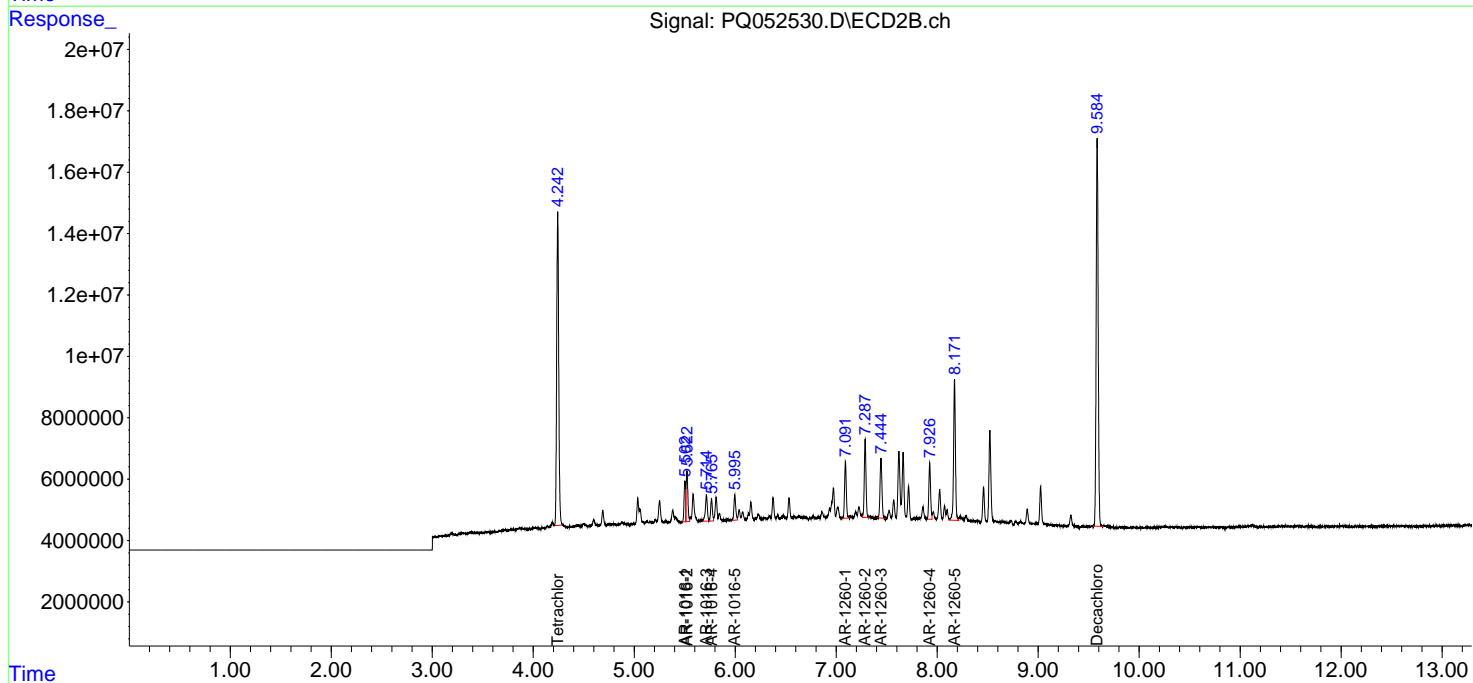
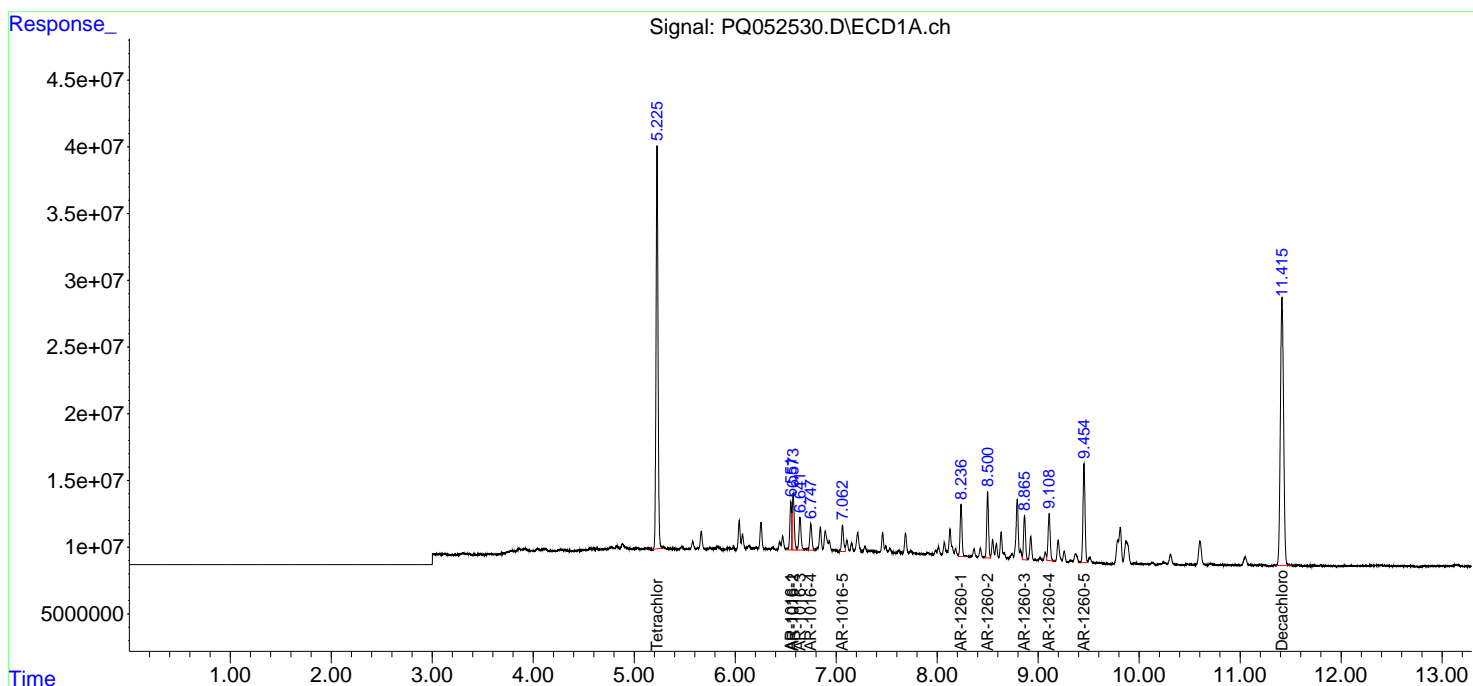
(f)=RT Delta > 1/2 Window (#)=Amounts differ by > 25% (m)=manual int.

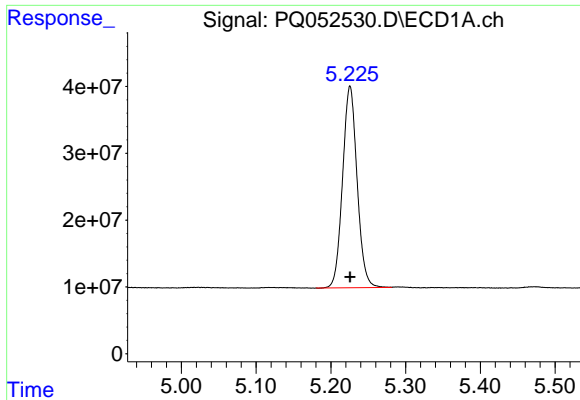
Data Path : Z:\pestpcbsrv\HPCHEM1\ECD_Q\Data\PQ031121\
 Data File : PQ052530.D
 Signal(s) : Signal #1: ECD1A.ch Signal #2: ECD2B.ch
 Acq On : 10 Mar 2021 13:27
 Operator : DD\AJ
 Sample : M1458-02
 Misc : AR1660 LOQ 50 PPB
 ALS Vial : 5 Sample Multiplier: 1

Instrument :
 ECD_Q
Client Sampled :
 LOQ-SOIL-02-QT1-2021

Integration File signal 1: autoint1.e
 Integration File signal 2: autoint2.e
 Quant Time: Mar 11 05:58:01 2021
 Quant Method : Z:\pestpcbsrv\HPCHEM1\ECD_Q\Method\PQ031021.M
 Quant Title : GC EXTRACTABLES
 QLast Update : Thu Mar 11 04:11:59 2021
 Response via : Initial Calibration
 Integrator: ChemStation

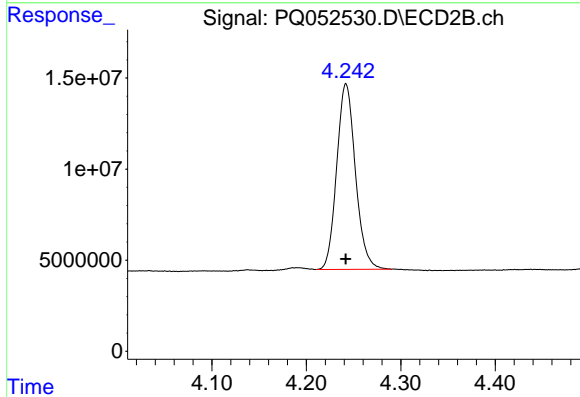
Volume Inj. : 2 µl
 Signal #1 Phase : ZB-MR1 Signal #2 Phase: ZB-MR2
 Signal #1 Info : 30Mx0.32mmx 0.50µ Signal #2 Info : 30M x 0.32mm x 0.25µm



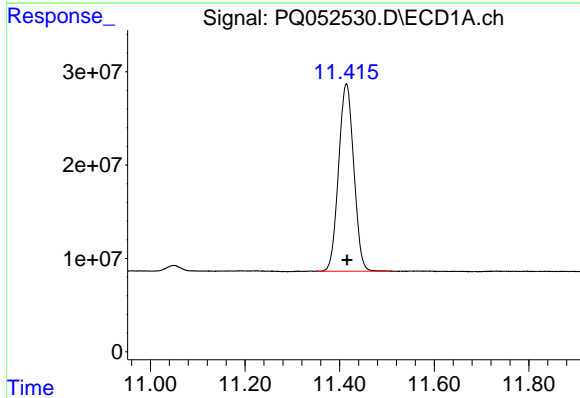


#1 Tetrachloro-m-xylene
 R.T.: 5.226 min
 Delta R.T.: 0.000 min
 Response: 407576304
 Conc: 16.05 ng/ml

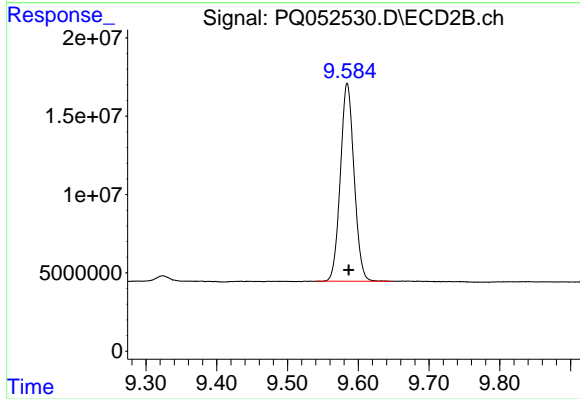
Instrument :
 ECD_Q
 ClientSampleId :
 LOQ-SOIL-02-QT1-2021



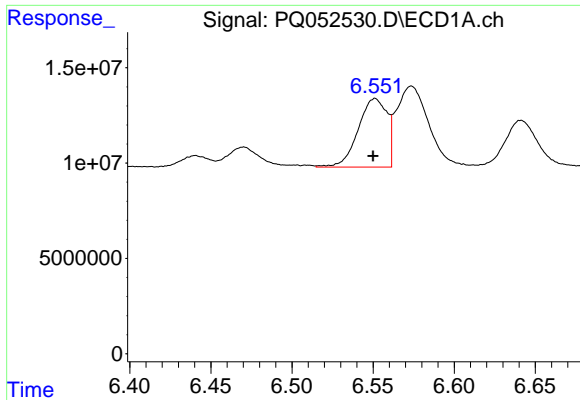
#1 Tetrachloro-m-xylene
 R.T.: 4.242 min
 Delta R.T.: 0.000 min
 Response: 140440309
 Conc: 15.44 ng/ml



#2 Decachlorobiphenyl
 R.T.: 11.414 min
 Delta R.T.: -0.001 min
 Response: 446839278
 Conc: 17.92 ng/ml



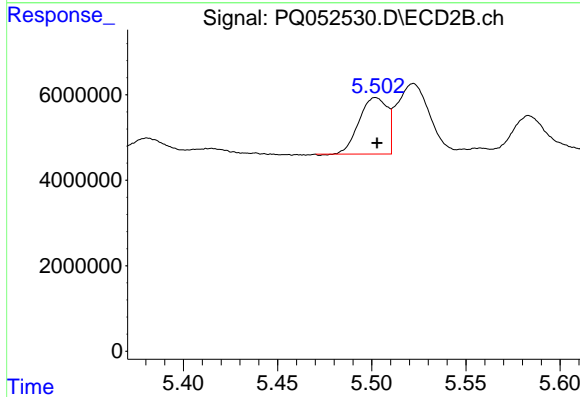
#2 Decachlorobiphenyl
 R.T.: 9.584 min
 Delta R.T.: -0.002 min
 Response: 169965876
 Conc: 17.52 ng/ml



#3 AR-1016-1

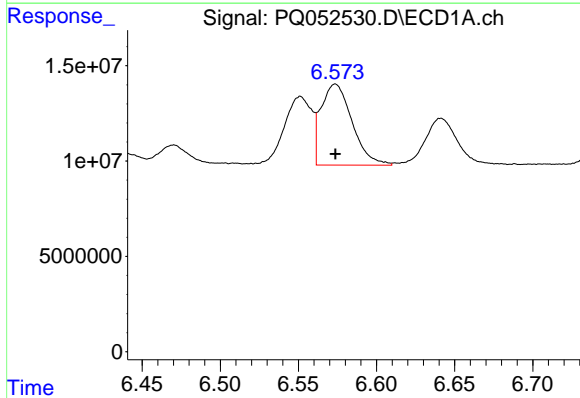
R.T.: 6.551 min
 Delta R.T.: 0.001 min
 Response: 44576349
 Conc: 52.65 ng/ml

Instrument :
 ECD_Q
ClientSampled :
 LOQ-SOIL-02-QT1-2021



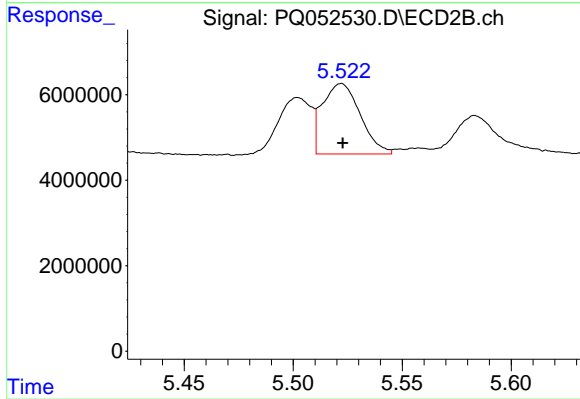
#3 AR-1016-1

R.T.: 5.502 min
 Delta R.T.: 0.000 min
 Response: 13744367
 Conc: 42.54 ng/ml



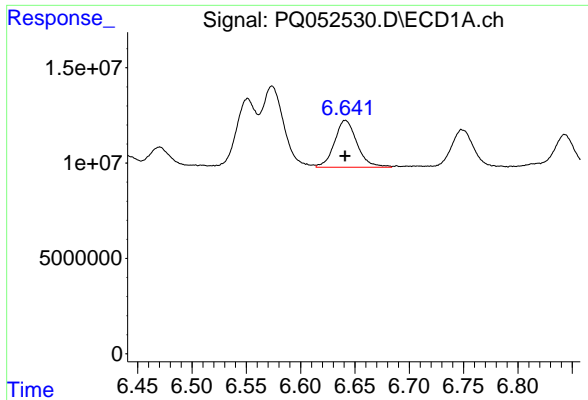
#4 AR-1016-2

R.T.: 6.574 min
 Delta R.T.: 0.000 min
 Response: 58895097
 Conc: 46.49 ng/ml



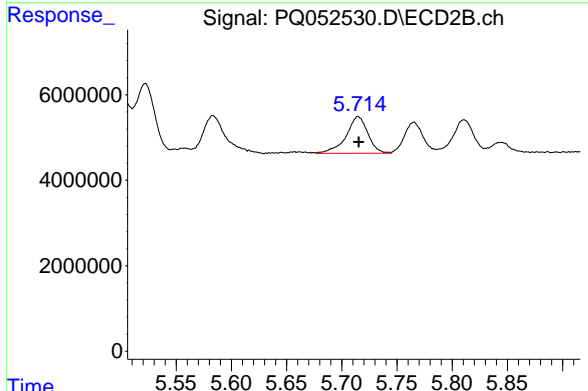
#4 AR-1016-2

R.T.: 5.522 min
 Delta R.T.: 0.000 min
 Response: 19956677
 Conc: 42.24 ng/ml

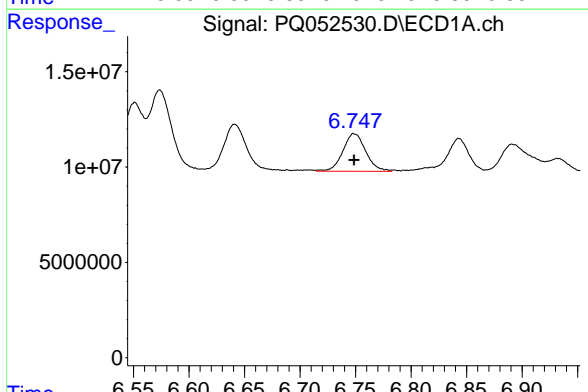


#5 AR-1016-3
 R.T.: 6.641 min
 Delta R.T.: 0.000 min
 Response: 35525704
 Conc: 47.53 ng/ml

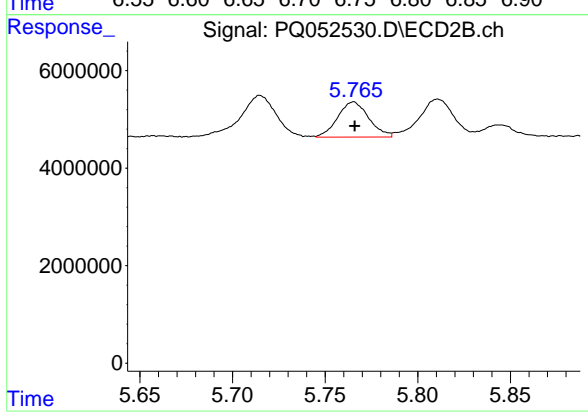
Instrument :
 ECD_Q
ClientSampleId :
 LOQ-SOIL-02-QT1-2021



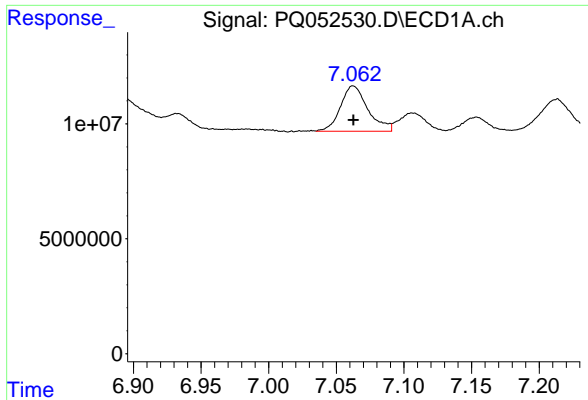
#5 AR-1016-3
 R.T.: 5.715 min
 Delta R.T.: 0.000 min
 Response: 11819485
 Conc: 48.91 ng/ml



#6 AR-1016-4
 R.T.: 6.748 min
 Delta R.T.: 0.000 min
 Response: 28424425
 Conc: 45.30 ng/ml



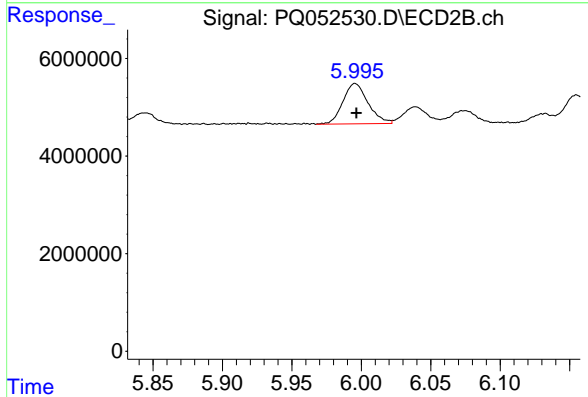
#6 AR-1016-4
 R.T.: 5.766 min
 Delta R.T.: 0.000 min
 Response: 8469033
 Conc: 46.04 ng/ml



#7 AR-1016-5

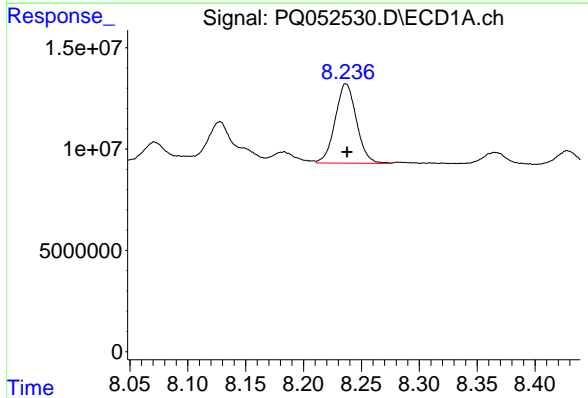
R.T.: 7.062 min
 Delta R.T.: 0.000 min
 Response: 27947134
 Conc: 47.90 ng/ml

Instrument :
 ECD_Q
 ClientSampleId :
 LOQ-SOIL-02-QT1-2021



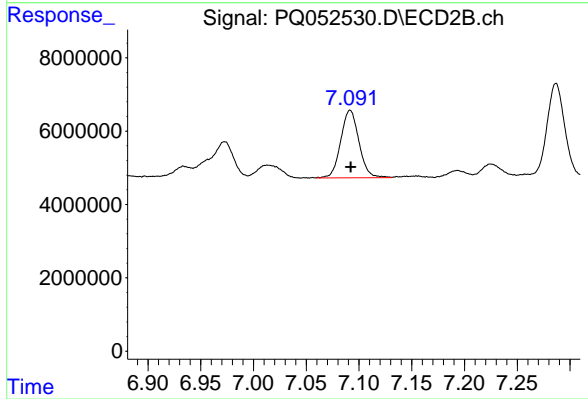
#7 AR-1016-5

R.T.: 5.996 min
 Delta R.T.: 0.000 min
 Response: 10370827
 Conc: 42.70 ng/ml



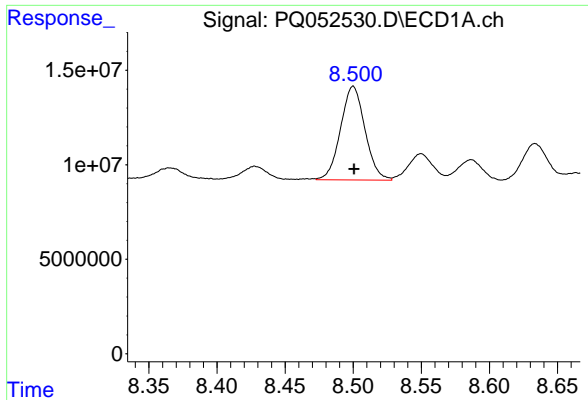
#31 AR-1260-1

R.T.: 8.236 min
 Delta R.T.: -0.001 min
 Response: 50092716
 Conc: 48.04 ng/ml



#31 AR-1260-1

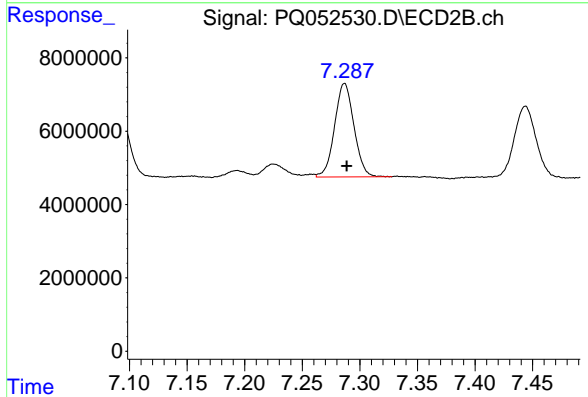
R.T.: 7.092 min
 Delta R.T.: 0.000 min
 Response: 22258748
 Conc: 47.74 ng/ml



#32 AR-1260-2

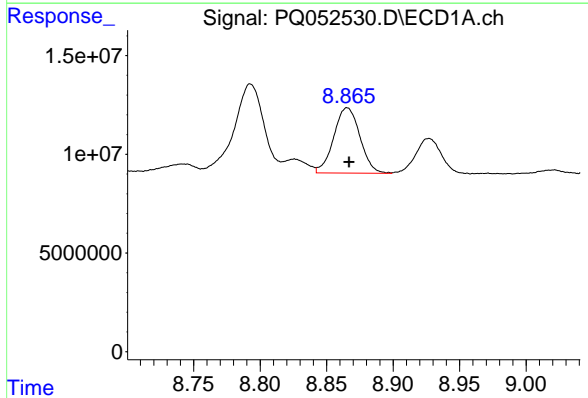
R.T.: 8.500 min
 Delta R.T.: 0.000 min
 Response: 61792772
 Conc: 48.75 ng/ml

Instrument :
 ECD_Q
ClientSampleId :
 LOQ-SOIL-02-QT1-2021



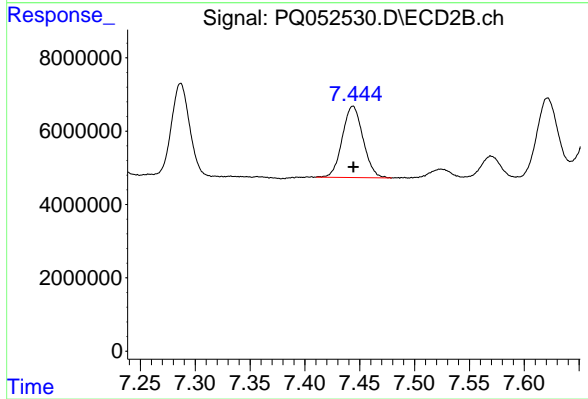
#32 AR-1260-2

R.T.: 7.287 min
 Delta R.T.: -0.002 min
 Response: 29888260
 Conc: 46.64 ng/ml



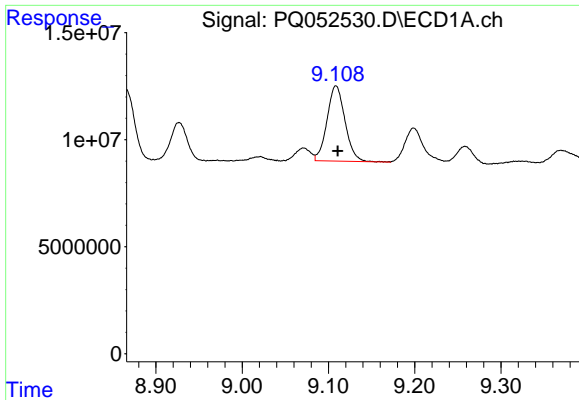
#33 AR-1260-3

R.T.: 8.866 min
 Delta R.T.: -0.001 min
 Response: 45419213
 Conc: 47.82 ng/ml



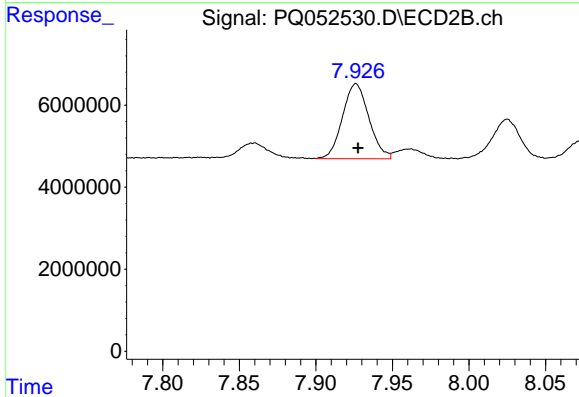
#33 AR-1260-3

R.T.: 7.444 min
 Delta R.T.: 0.000 min
 Response: 25600861
 Conc: 46.41 ng/ml

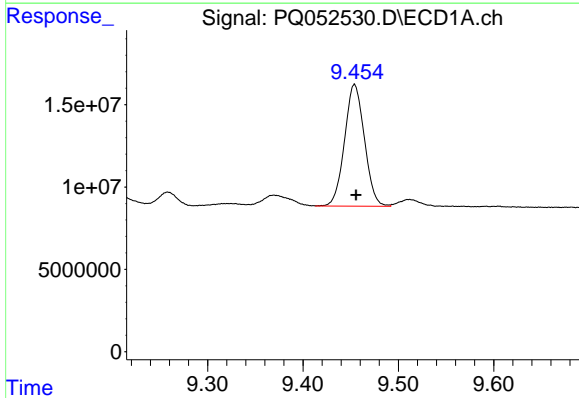


#34 AR-1260-4
 R.T.: 9.109 min
 Delta R.T.: -0.002 min
 Response: 51088821
 Conc: 45.04 ng/ml

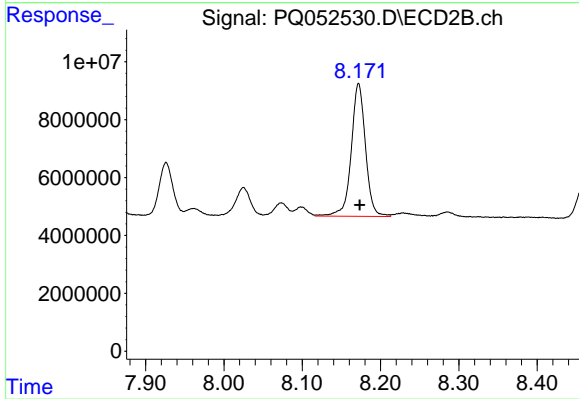
Instrument :
 ECD_Q
ClientSampled :
 LOQ-SOIL-02-QT1-2021



#34 AR-1260-4
 R.T.: 7.926 min
 Delta R.T.: -0.001 min
 Response: 21957755
 Conc: 46.33 ng/ml



#35 AR-1260-5
 R.T.: 9.454 min
 Delta R.T.: -0.002 min
 Response: 107198905
 Conc: 44.81 ng/ml



#35 AR-1260-5
 R.T.: 8.172 min
 Delta R.T.: -0.001 min
 Response: 58058042
 Conc: 44.10 ng/ml