

Data Path : Z:\pestpcbsrv\HPCHEM1\ECD_Q\Data\PQ031121\
 Data File : PQ052533.D
 Signal(s) : Signal #1: ECD1A.ch Signal #2: ECD2B.ch
 Acq On : 10 Mar 2021 14:17
 Operator : DD\AJ
 Sample : M1458-02
 Misc : AR1242 LOQ 50 PPB
 ALS Vial : 8 Sample Multiplier: 1

Instrument :
 ECD_Q
ClientSampleId :
 LOQ-SOIL-02-QT1-2021

Integration File signal 1: autoint1.e
 Integration File signal 2: autoint2.e
 Quant Time: Mar 11 06:00:04 2021
 Quant Method : Z:\pestpcbsrv\HPCHEM1\ECD_Q\Method\PQ031021.M
 Quant Title : GC EXTRACTABLES
 QLast Update : Thu Mar 11 04:11:59 2021
 Response via : Initial Calibration
 Integrator: ChemStation

Volume Inj. : 2 µl
 Signal #1 Phase : ZB-MR1 Signal #2 Phase: ZB-MR2
 Signal #1 Info : 30Mx0.32mmx 0.50µ Signal #2 Info : 30M x 0.32mm x 0.25µm

Compound	RT#1	RT#2	Resp#1	Resp#2	ng/ml	ng/ml

System Monitoring Compounds						
1) SA Tetrachlo...	5.226	4.242	515.8E6	181.3E6	20.306	19.926
2) SA Decachlor...	11.413	9.585	538.5E6	208.7E6	21.599	21.515
Target Compounds						
16) L4 AR-1242-1	6.549	5.502	26126878	9094718	40.353	36.956
17) L4 AR-1242-2	6.575	5.523	38902814	12819493	40.581	36.493
18) L4 AR-1242-3	6.641	5.716	23940906	6618163	41.757	35.928
19) L4 AR-1242-4	6.749	5.812	21190654	6517120	44.618	38.675
20) L4 AR-1242-5	7.532	6.375	24858964	9022368	47.215	37.942

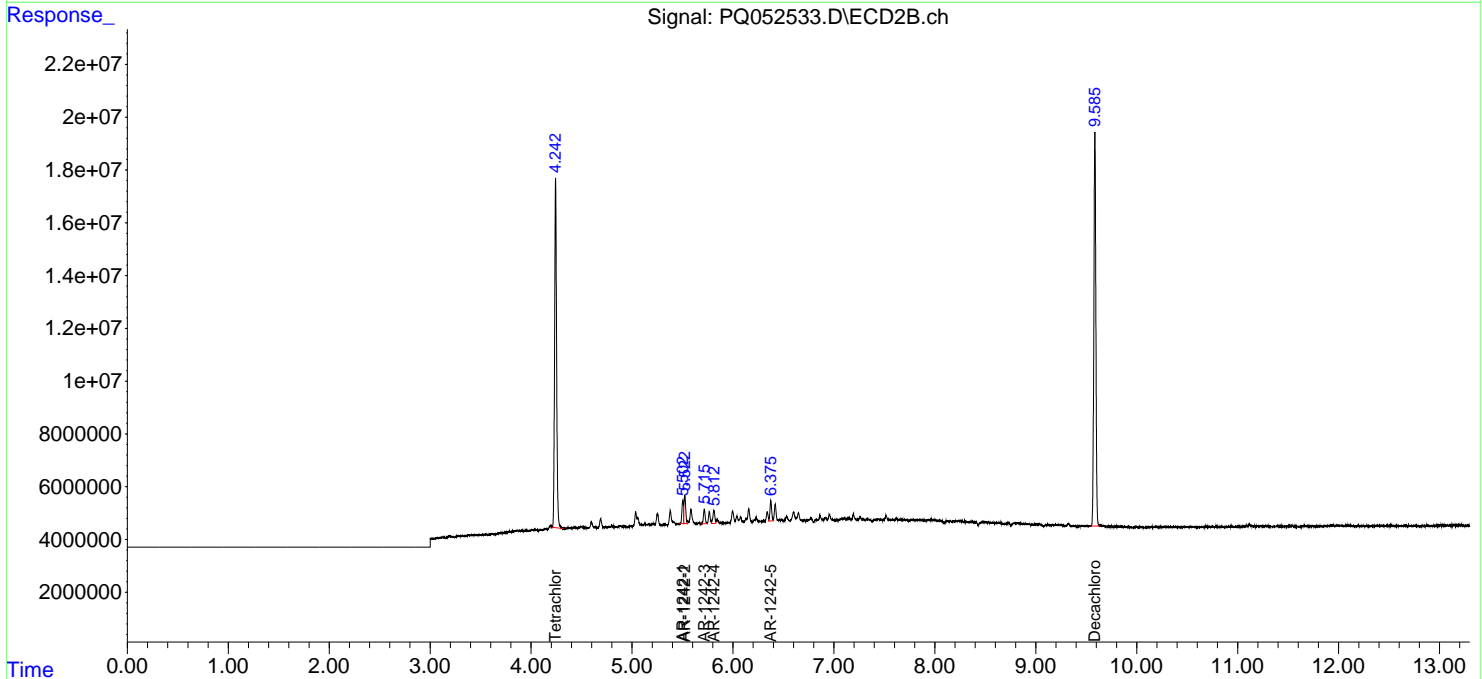
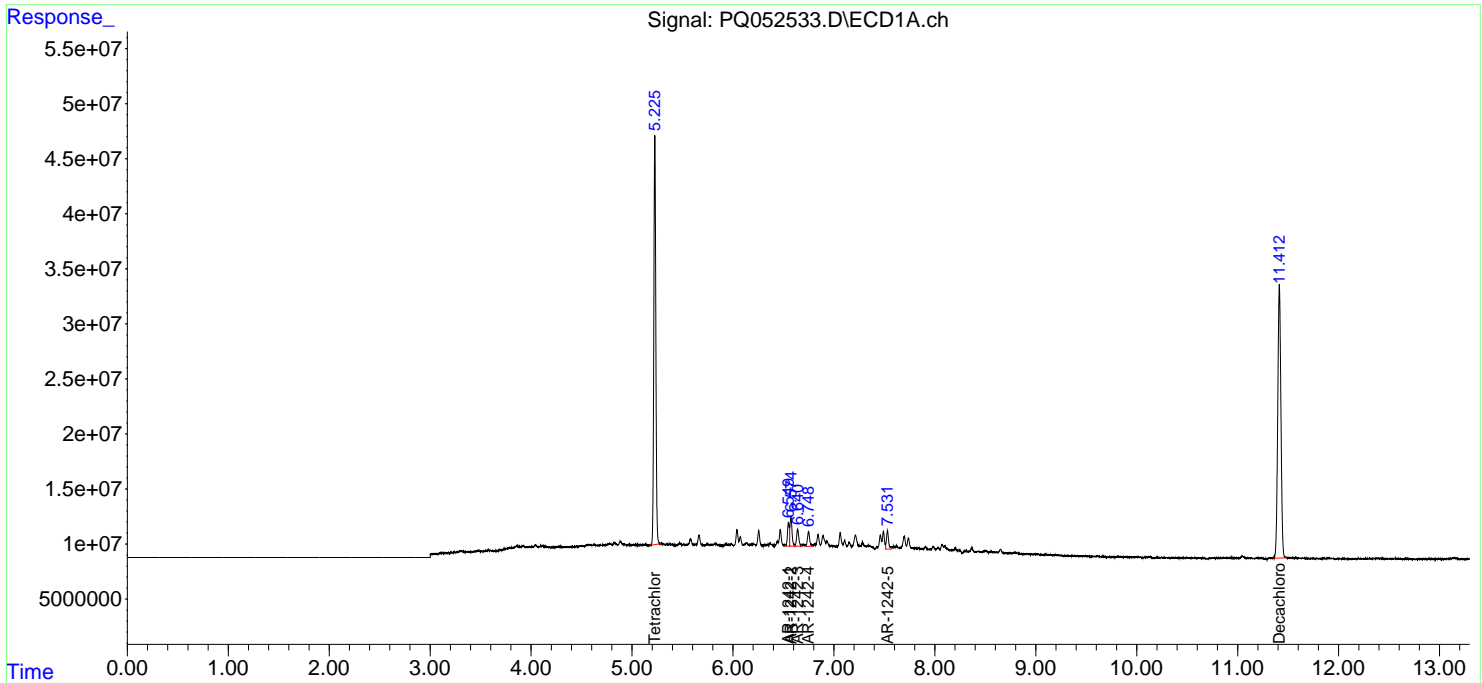
(f)=RT Delta > 1/2 Window (#)=Amounts differ by > 25% (m)=manual int.

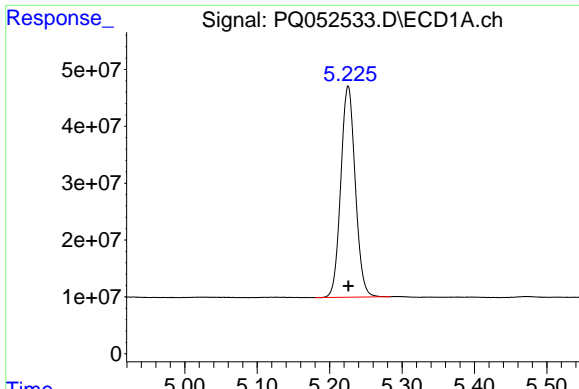
Data Path : Z:\pestpcbsrv\HPCHEM1\ECD_Q\Data\PQ031121\
 Data File : PQ052533.D
 Signal(s) : Signal #1: ECD1A.ch Signal #2: ECD2B.ch
 Acq On : 10 Mar 2021 14:17
 Operator : DD\AJ
 Sample : M1458-02
 Misc : AR1242 LOQ 50 PPB
 ALS Vial : 8 Sample Multiplier: 1

Instrument :
 ECD_Q
ClientSampled :
 LOQ-SOIL-02-QT1-2021

Integration File signal 1: autoint1.e
 Integration File signal 2: autoint2.e
 Quant Time: Mar 11 06:00:04 2021
 Quant Method : Z:\pestpcbsrv\HPCHEM1\ECD_Q\Method\PQ031021.M
 Quant Title : GC EXTRACTABLES
 QLast Update : Thu Mar 11 04:11:59 2021
 Response via : Initial Calibration
 Integrator: ChemStation

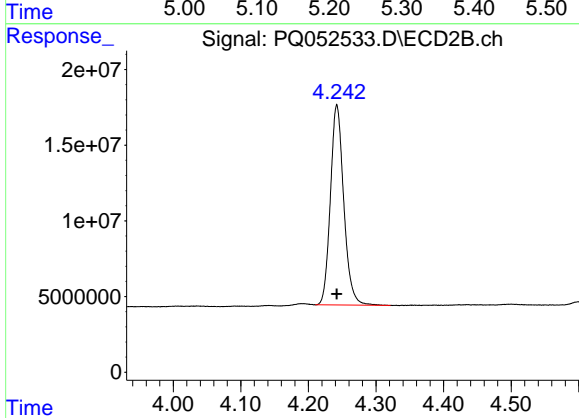
Volume Inj. : 2 µl
 Signal #1 Phase : ZB-MR1 Signal #2 Phase: ZB-MR2
 Signal #1 Info : 30Mx0.32mmx 0.50µm Signal #2 Info : 30M x 0.32mm x 0.25µm



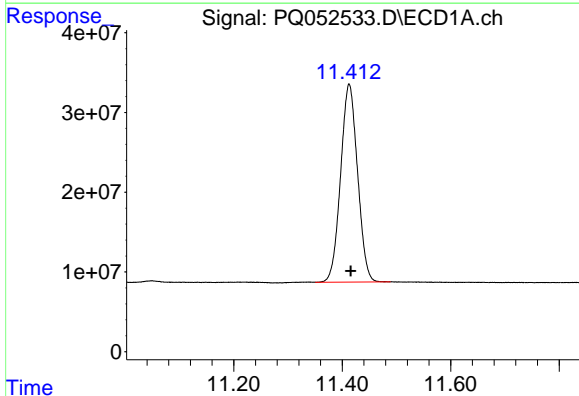


#1 Tetrachloro-m-xylene
 R.T.: 5.226 min
 Delta R.T.: 0.000 min
 Response: 515764272
 Conc: 20.31 ng/ml

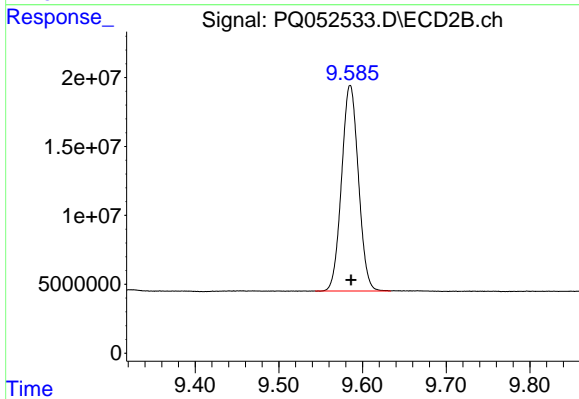
Instrument :
 ECD_Q
 ClientSampleId :
 LOQ-SOIL-02-QT1-2021



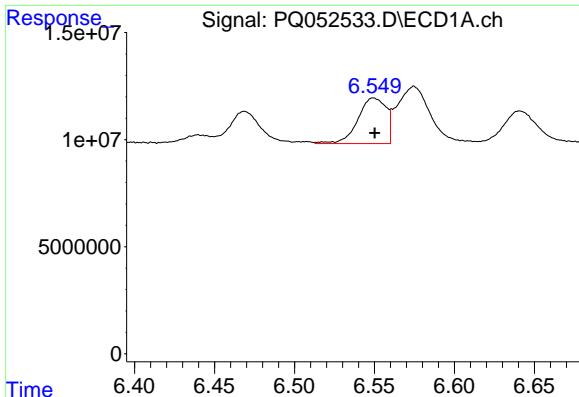
#1 Tetrachloro-m-xylene
 R.T.: 4.242 min
 Delta R.T.: 0.000 min
 Response: 181254679
 Conc: 19.93 ng/ml



#2 Decachlorobiphenyl
 R.T.: 11.413 min
 Delta R.T.: -0.003 min
 Response: 538467168
 Conc: 21.60 ng/ml



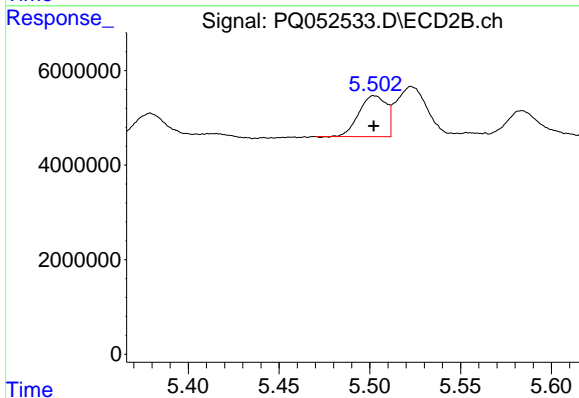
#2 Decachlorobiphenyl
 R.T.: 9.585 min
 Delta R.T.: -0.001 min
 Response: 208684940
 Conc: 21.52 ng/ml



#16 AR-1242-1

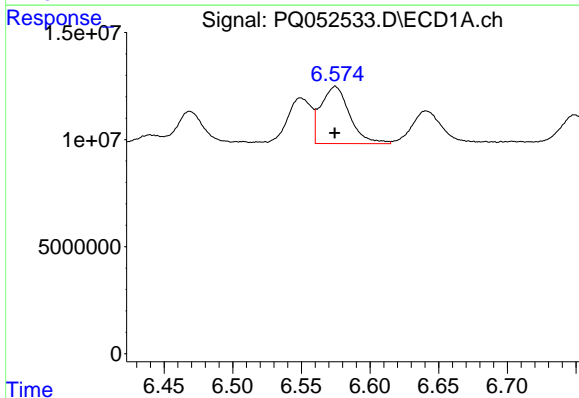
R.T.: 6.549 min
 Delta R.T.: 0.000 min
 Response: 26126878
 Conc: 40.35 ng/ml

Instrument :
 ECD_Q
 ClientSampleId :
 LOQ-SOIL-02-QT1-2021



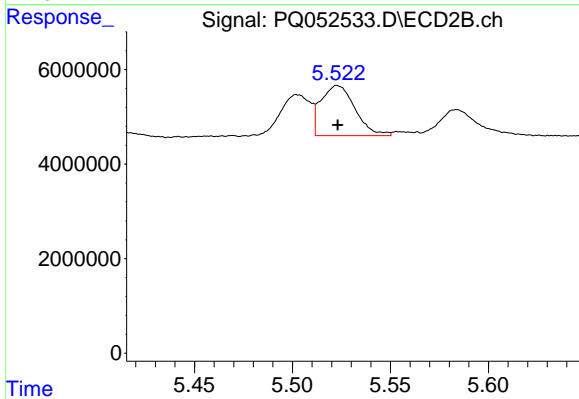
#16 AR-1242-1

R.T.: 5.502 min
 Delta R.T.: 0.000 min
 Response: 9094718
 Conc: 36.96 ng/ml



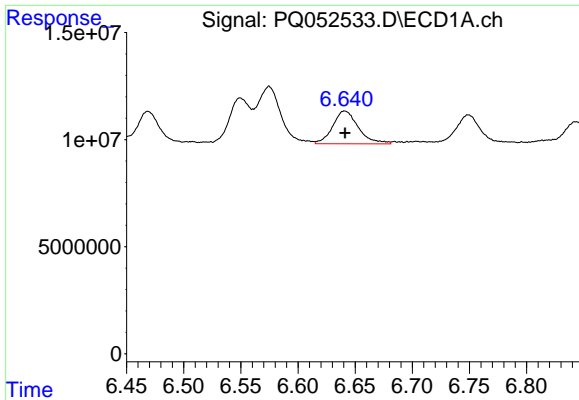
#17 AR-1242-2

R.T.: 6.575 min
 Delta R.T.: 0.000 min
 Response: 38902814
 Conc: 40.58 ng/ml



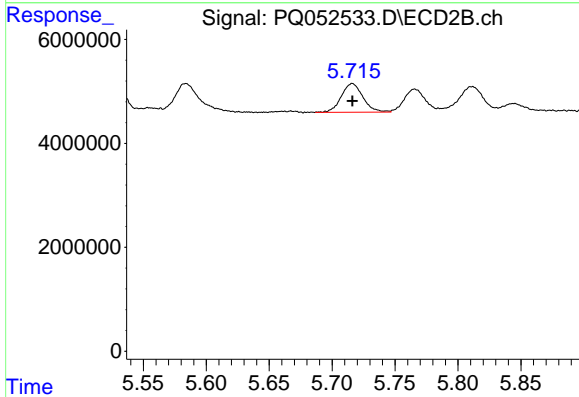
#17 AR-1242-2

R.T.: 5.523 min
 Delta R.T.: 0.000 min
 Response: 12819493
 Conc: 36.49 ng/ml

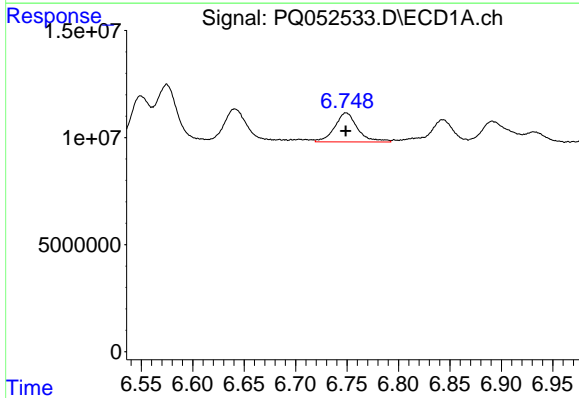


#18 AR-1242-3
 R.T.: 6.641 min
 Delta R.T.: 0.000 min
 Response: 23940906
 Conc: 41.76 ng/ml

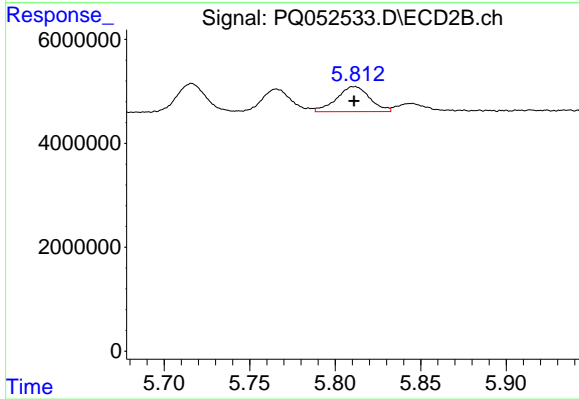
Instrument :
 ECD_Q
ClientSampled :
 LOQ-SOIL-02-QT1-2021



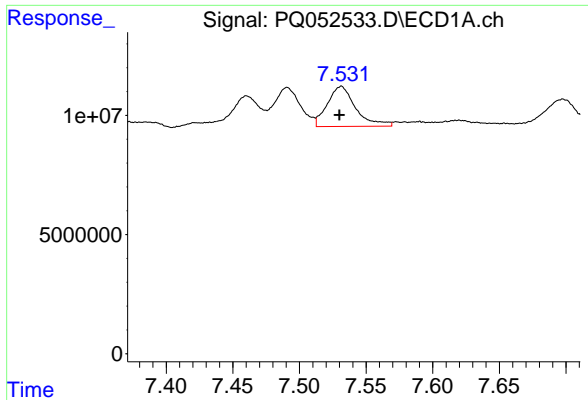
#18 AR-1242-3
 R.T.: 5.716 min
 Delta R.T.: 0.000 min
 Response: 6618163
 Conc: 35.93 ng/ml



#19 AR-1242-4
 R.T.: 6.749 min
 Delta R.T.: 0.000 min
 Response: 21190654
 Conc: 44.62 ng/ml



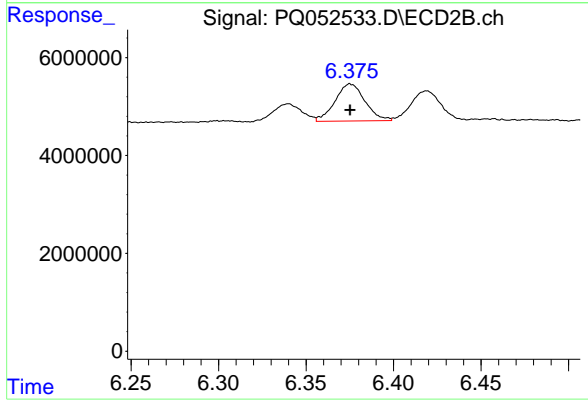
#19 AR-1242-4
 R.T.: 5.812 min
 Delta R.T.: 0.000 min
 Response: 6517120
 Conc: 38.68 ng/ml



#20 AR-1242-5

R.T.: 7.532 min
Delta R.T.: 0.002 min
Response: 24858964
Conc: 47.22 ng/ml

Instrument :
ECD_Q
ClientSampleId :
LOQ-SOIL-02-QT1-2021



#20 AR-1242-5

R.T.: 6.375 min
Delta R.T.: 0.000 min
Response: 9022368
Conc: 37.94 ng/ml