

Data Path : Z:\pestpcbsrv\HPCHEM1\ECD_Q\Data\PQ031121\
 Data File : PQ052548.D
 Signal(s) : Signal #1: ECD1A.ch Signal #2: ECD2B.ch
 Acq On : 10 Mar 2021 19:12
 Operator : DD\AJ
 Sample : M1458-08
 Misc : AR1268 LOQ 50 PPB
 ALS Vial : 21 Sample Multiplier: 1

Instrument :
 ECD_Q
ClientSampleId :
 LOQ-WATER-02-QT1-2021

Integration File signal 1: autoint1.e
 Integration File signal 2: autoint2.e
 Quant Time: Mar 11 06:10:03 2021
 Quant Method : Z:\pestpcbsrv\HPCHEM1\ECD_Q\Method\PQ031021.M
 Quant Title : GC EXTRACTABLES
 QLast Update : Thu Mar 11 04:11:59 2021
 Response via : Initial Calibration
 Integrator: ChemStation

Volume Inj. : 2 µl
 Signal #1 Phase : ZB-MR2 Signal #2 Phase: ZB-MR2
 Signal #1 Info : 30Mx0.32mmx 0.50µ Signal #2 Info : 30M x 0.32mm x 0.25µm

Compound	RT#1	RT#2	Resp#1	Resp#2	ng/ml	ng/ml

System Monitoring Compounds						
1) SA Tetrachlo...	5.226	4.243	398.4E6	138.3E6	15.686	15.202
2) SA Decachlor...	11.412	9.585	536.2E6	206.9E6	21.509	21.327
Target Compounds						
41) L9 AR-1268-1	9.784	8.459	194.5E6	103.9E6	62.082	60.764
42) L9 AR-1268-2	9.889	8.524	182.4E6	89104848	62.117	59.196
43) L9 AR-1268-3	10.133	8.734	161.7E6	77922466	63.771	60.454
44) L9 AR-1268-4	10.602	9.025	67156091	30223026	61.873	59.051
45) L9 AR-1268-5	11.048	9.324	542.7E6	228.0E6	60.318	58.761

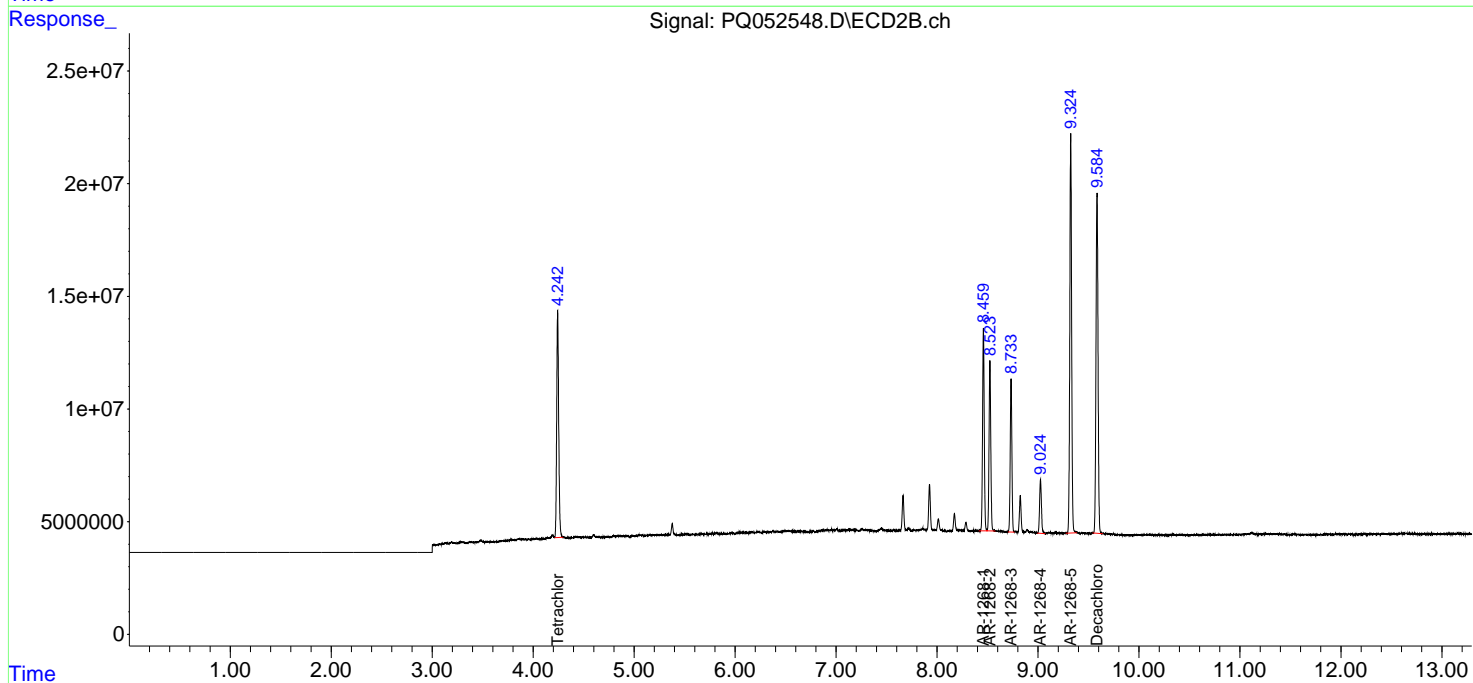
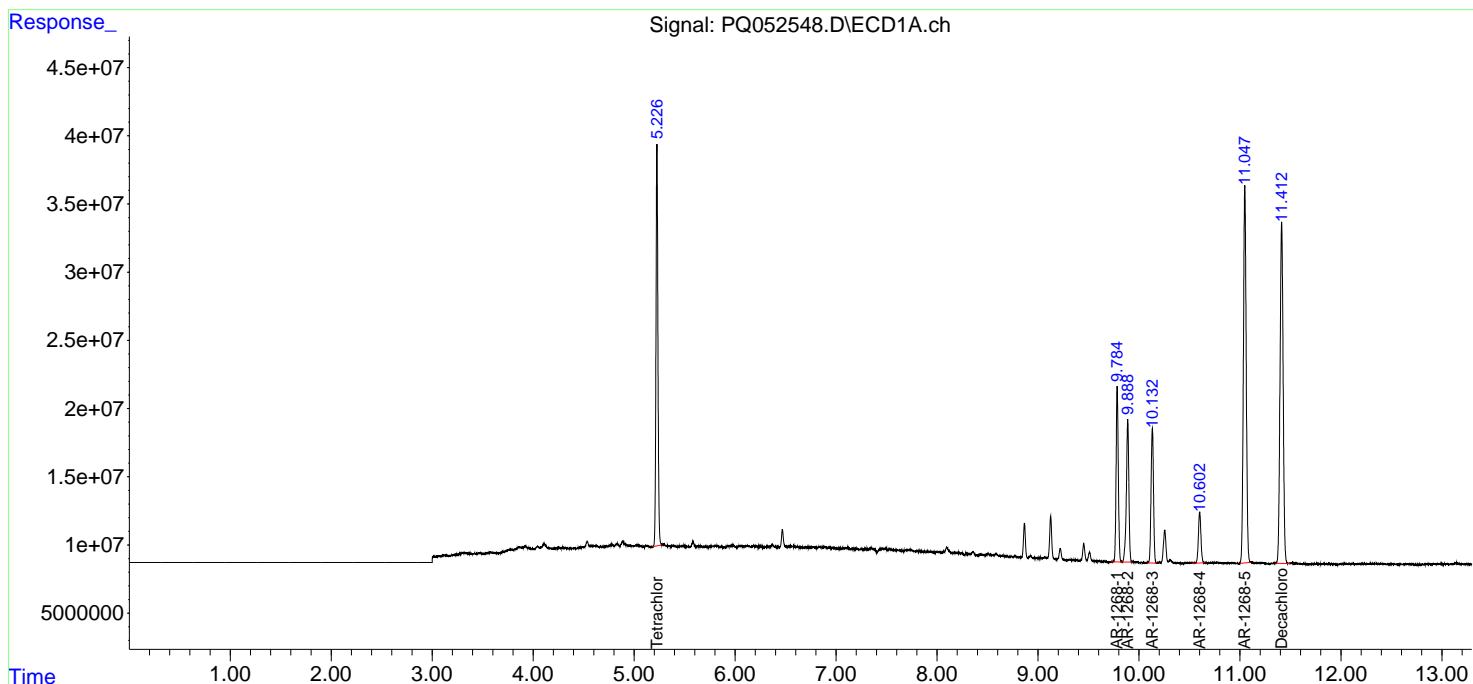
(f)=RT Delta > 1/2 Window (#)=Amounts differ by > 25% (m)=manual int.

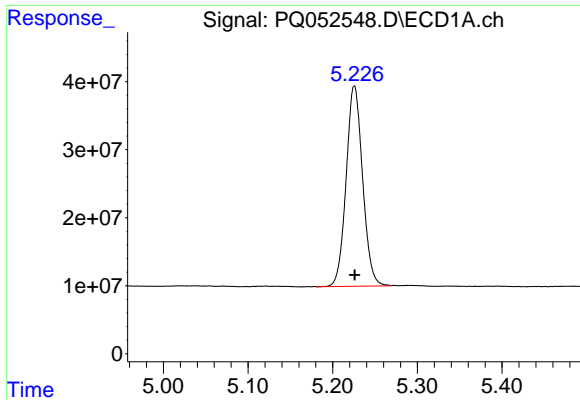
Data Path : Z:\pestpcbsrv\HPCHEM1\ECD_Q\Data\PQ031121\
 Data File : PQ052548.D
 Signal(s) : Signal #1: ECD1A.ch Signal #2: ECD2B.ch
 Acq On : 10 Mar 2021 19:12
 Operator : DD\AJ
 Sample : M1458-08
 Misc : AR1268 LOQ 50 PPB
 ALS Vial : 21 Sample Multiplier: 1

Instrument :
 ECD_Q
Client Sampled :
 LOQ-WATER-02-QT1-2021

Integration File signal 1: autoint1.e
 Integration File signal 2: autoint2.e
 Quant Time: Mar 11 06:10:03 2021
 Quant Method : Z:\pestpcbsrv\HPCHEM1\ECD_Q\Method\PQ031021.M
 Quant Title : GC EXTRACTABLES
 QLast Update : Thu Mar 11 04:11:59 2021
 Response via : Initial Calibration
 Integrator: ChemStation

Volume Inj. : 2 µl
 Signal #1 Phase : ZB-MR1 Signal #2 Phase: ZB-MR2
 Signal #1 Info : 30Mx0.32mmx 0.50µ Signal #2 Info : 30M x 0.32mm x 0.25µm

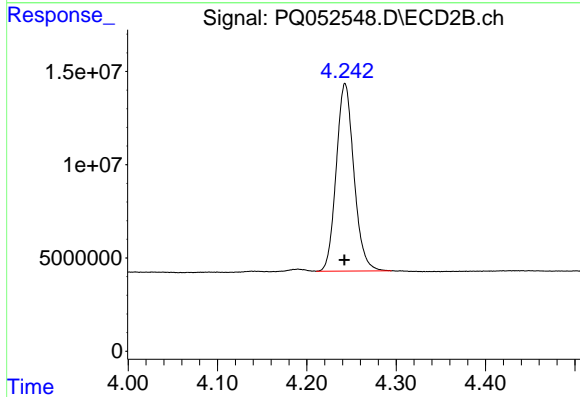




#1 Tetrachloro-m-xylene

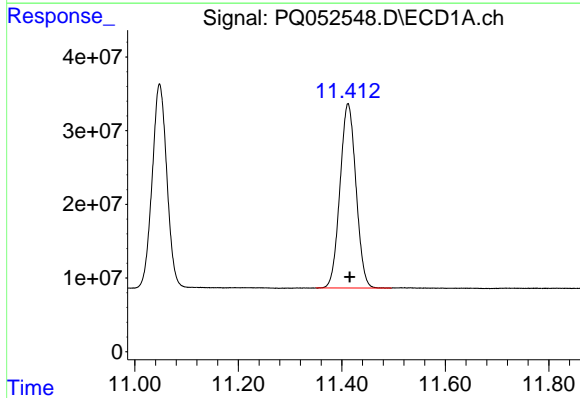
R.T.: 5.226 min
 Delta R.T.: 0.000 min
 Response: 398420902
 Conc: 15.69 ng/ml

Instrument :
 ECD_Q
 ClientSampleId :
 LOQ-WATER-02-QT1-2021



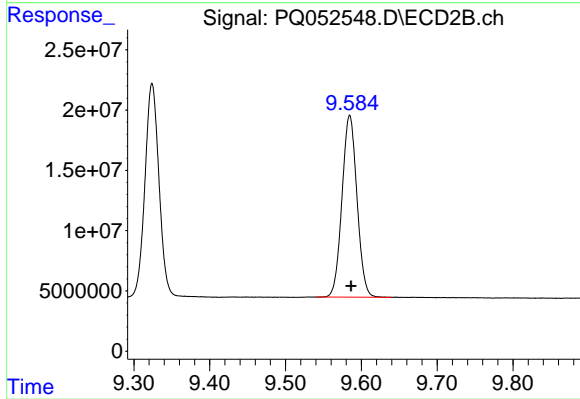
#1 Tetrachloro-m-xylene

R.T.: 4.243 min
 Delta R.T.: 0.000 min
 Response: 138282268
 Conc: 15.20 ng/ml



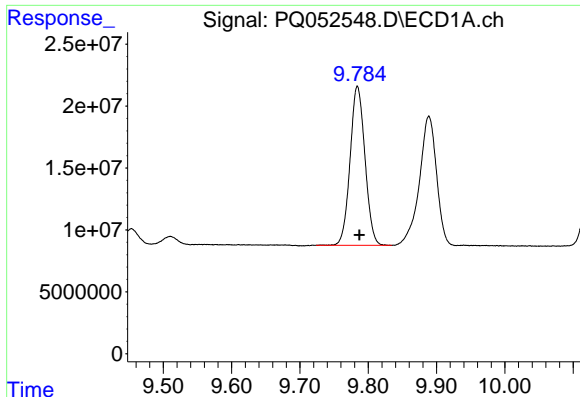
#2 Decachlorobiphenyl

R.T.: 11.412 min
 Delta R.T.: -0.003 min
 Response: 536221976
 Conc: 21.51 ng/ml



#2 Decachlorobiphenyl

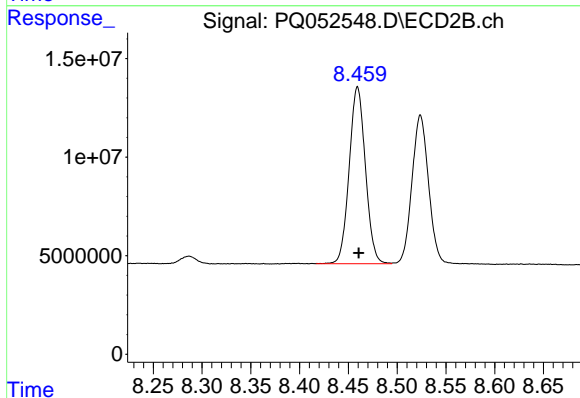
R.T.: 9.585 min
 Delta R.T.: -0.002 min
 Response: 206859565
 Conc: 21.33 ng/ml



#41 AR-1268-1

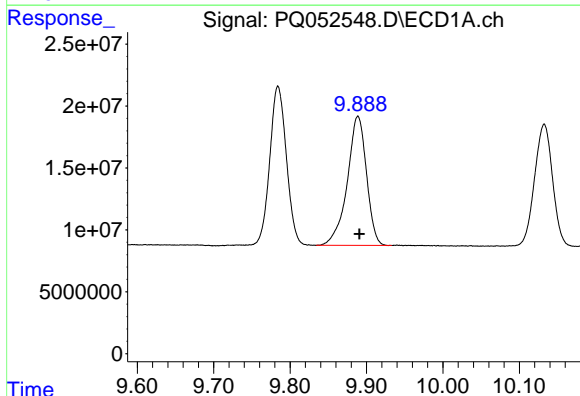
R.T.: 9.784 min
Delta R.T.: -0.003 min
Response: 194516417
Conc: 62.08 ng/ml

Instrument :
ECD_Q
ClientSampleId :
LOQ-WATER-02-QT1-2021



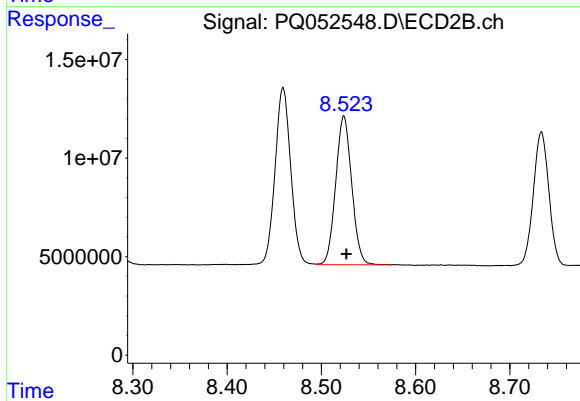
#41 AR-1268-1

R.T.: 8.459 min
Delta R.T.: -0.001 min
Response: 103910675
Conc: 60.76 ng/ml



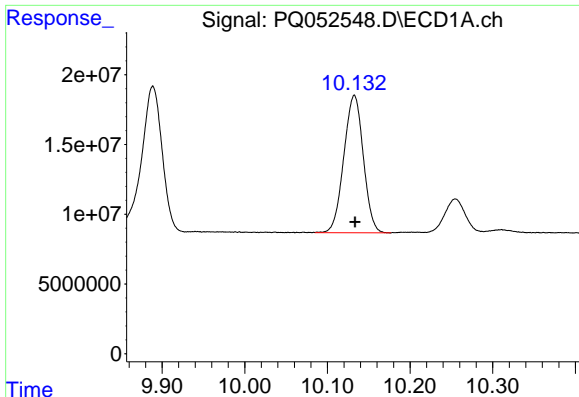
#42 AR-1268-2

R.T.: 9.889 min
Delta R.T.: -0.002 min
Response: 182378009
Conc: 62.12 ng/ml



#42 AR-1268-2

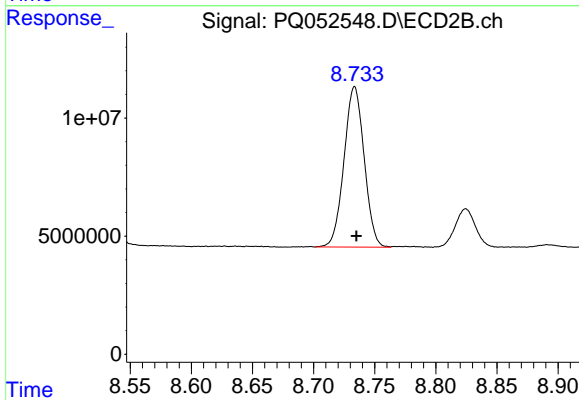
R.T.: 8.524 min
Delta R.T.: -0.003 min
Response: 89104848
Conc: 59.20 ng/ml



#43 AR-1268-3

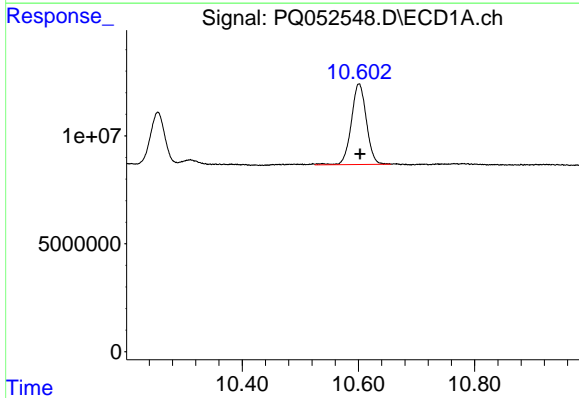
R.T.: 10.133 min
 Delta R.T.: 0.000 min
 Response: 161707202
 Conc: 63.77 ng/ml

Instrument :
 ECD_Q
 ClientSampleId :
 LOQ-WATER-02-QT1-2021



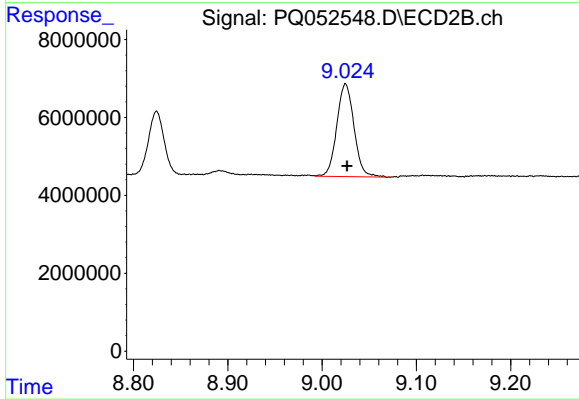
#43 AR-1268-3

R.T.: 8.734 min
 Delta R.T.: -0.002 min
 Response: 77922466
 Conc: 60.45 ng/ml



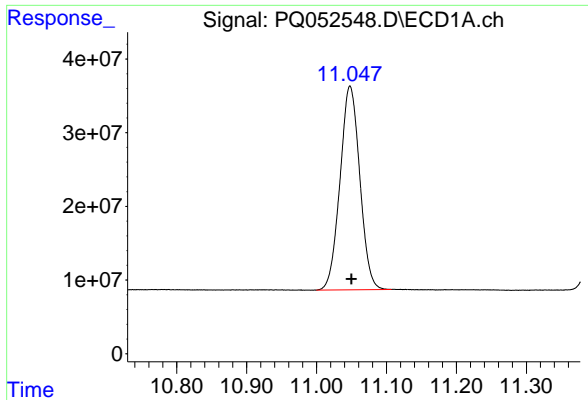
#44 AR-1268-4

R.T.: 10.602 min
 Delta R.T.: -0.001 min
 Response: 67156091
 Conc: 61.87 ng/ml



#44 AR-1268-4

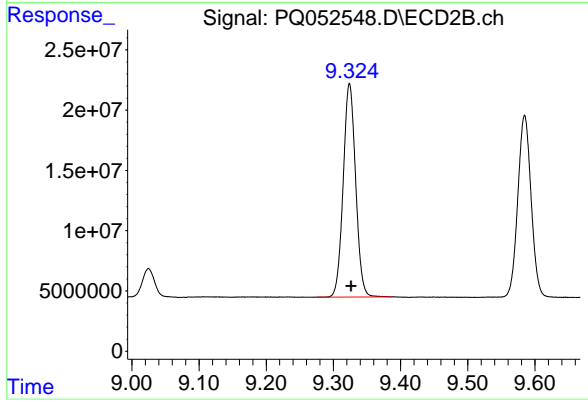
R.T.: 9.025 min
 Delta R.T.: -0.002 min
 Response: 30223026
 Conc: 59.05 ng/ml



#45 AR-1268-5

R.T.: 11.048 min
Delta R.T.: -0.002 min
Response: 542704964
Conc: 60.32 ng/ml

Instrument :
ECD_Q
ClientSampleId :
LOQ-WATER-02-QT1-2021



#45 AR-1268-5

R.T.: 9.324 min
Delta R.T.: -0.003 min
Response: 227969760
Conc: 58.76 ng/ml