

Data Path : Z:\pestpcbsrv\HPCHEM1\ECD_Q\Data\PQ031121\
 Data File : PQ052550.D
 Signal(s) : Signal #1: ECD1A.ch Signal #2: ECD2B.ch
 Acq On : 10 Mar 2021 19:45
 Operator : DD\AJ
 Sample : I.BLK
 Misc :
 ALS Vial : 2 Sample Multiplier: 1

Instrument :
 ECD_Q
 ClientSampleId :
 I.BLK

Integration File signal 1: autoint1.e
 Integration File signal 2: autoint2.e
 Quant Time: Mar 11 06:11:22 2021
 Quant Method : Z:\pestpcbsrv\HPCHEM1\ECD_Q\Method\PQ031021.M
 Quant Title : GC EXTRACTABLES
 QLast Update : Thu Mar 11 04:11:59 2021
 Response via : Initial Calibration
 Integrator: ChemStation

Volume Inj. : 2 µl
 Signal #1 Phase : ZB-MR1 Signal #2 Phase: ZB-MR2
 Signal #1 Info : 30Mx0.32mmx 0.50µ Signal #2 Info : 30M x 0.32mm x 0.25µm

Compound	RT#1	RT#2	Resp#1	Resp#2	ng/ml	ng/ml

System Monitoring Compounds						
1) SA Tetrachlo...	5.226	4.243	526.7E6	183.0E6	20.735	20.113
2) SA Decachlor...	11.413	9.585	562.2E6	218.0E6	22.550	22.472

Target Compounds

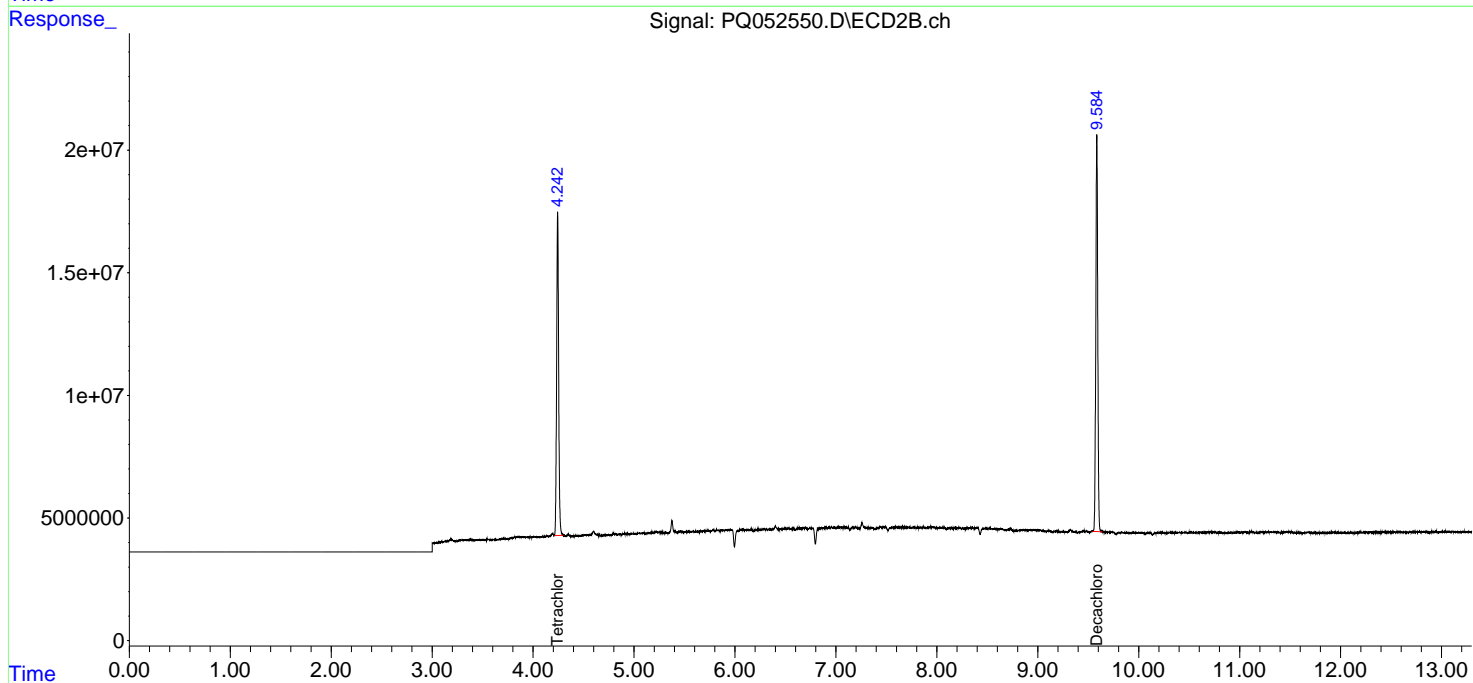
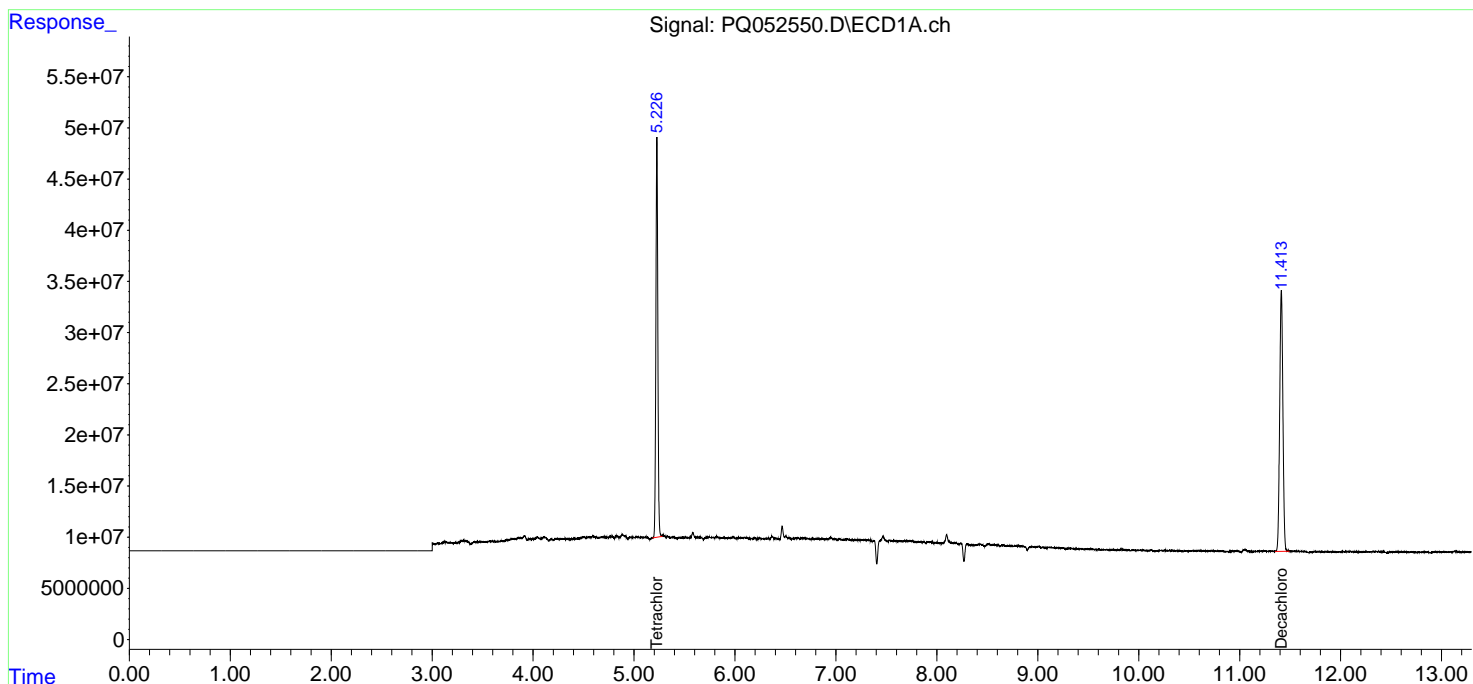
(f)=RT Delta > 1/2 Window (#)=Amounts differ by > 25% (m)=manual int.

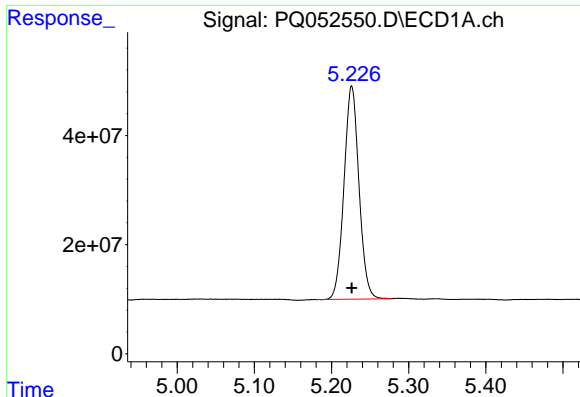
Data Path : Z:\pestpcbsrv\HPCHEM1\ECD_Q\Data\PQ031121\
 Data File : PQ052550.D
 Signal(s) : Signal #1: ECD1A.ch Signal #2: ECD2B.ch
 Acq On : 10 Mar 2021 19:45
 Operator : DD\AJ
 Sample : I.BLK
 Misc :
 ALS Vial : 2 Sample Multiplier: 1

Instrument :
 ECD_Q
 ClientSampled :
 I.BLK

Integration File signal 1: autoint1.e
 Integration File signal 2: autoint2.e
 Quant Time: Mar 11 06:11:22 2021
 Quant Method : Z:\pestpcbsrv\HPCHEM1\ECD_Q\Method\PQ031021.M
 Quant Title : GC EXTRACTABLES
 QLast Update : Thu Mar 11 04:11:59 2021
 Response via : Initial Calibration
 Integrator: ChemStation

Volume Inj. : 2 µl
 Signal #1 Phase : ZB-MR1 Signal #2 Phase: ZB-MR2
 Signal #1 Info : 30Mx0.32mmx 0.50µ Signal #2 Info : 30M x 0.32mm x 0.25µm

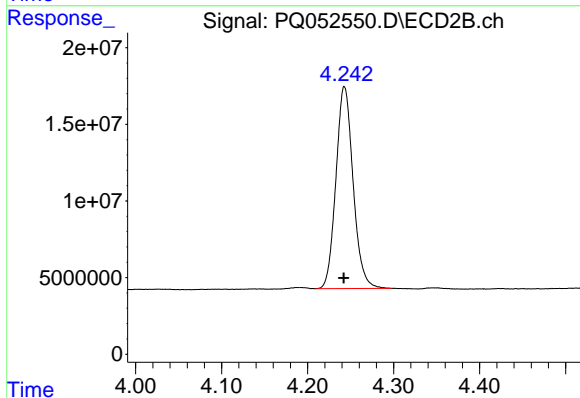




#1 Tetrachloro-m-xylene

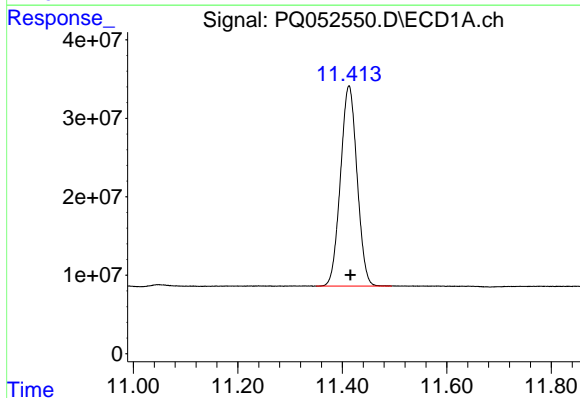
R.T.: 5.226 min
Delta R.T.: 0.000 min
Response: 526676211
Conc: 20.74 ng/ml

Instrument :
ECD_Q
ClientSampleId :
I.BLK



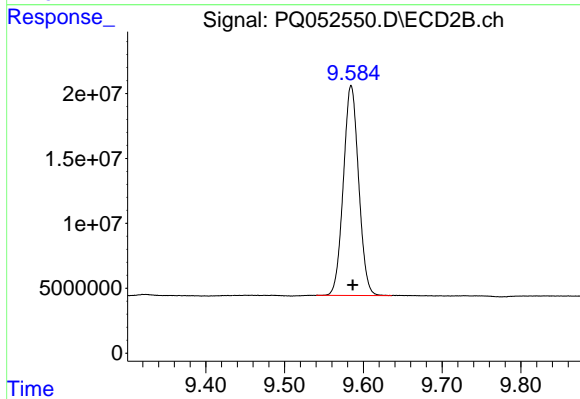
#1 Tetrachloro-m-xylene

R.T.: 4.243 min
Delta R.T.: 0.000 min
Response: 182959562
Conc: 20.11 ng/ml



#2 Decachlorobiphenyl

R.T.: 11.413 min
Delta R.T.: -0.002 min
Response: 562163527
Conc: 22.55 ng/ml



#2 Decachlorobiphenyl

R.T.: 9.585 min
Delta R.T.: -0.002 min
Response: 217969764
Conc: 22.47 ng/ml