

Data Path : Z:\pestpcbsrv\HPCHEM1\ECD\_Q\Data\PQ031220\  
 Data File : PQ046908.D  
 Signal(s) : Signal #1: ECD1A.ch Signal #2: ECD2B.ch  
 Acq On : 12 Mar 2020 10:03  
 Operator : AJ\MA  
 Sample : L1869-02  
 Misc :  
 ALS Vial : 5 Sample Multiplier: 1

**Instrument :**  
 ECD\_Q  
**ClientSampled :**  
 S5-02-A

**Manual Integrations**  
**APPROVED**  
 Sohil  
 3/13/2020 8:32:48 AM

Integration File signal 1: autoint1.e  
 Integration File signal 2: autoint2.e  
 Quant Time: Mar 12 12:13:08 2020  
 Quant Method : Z:\pestpcbsrv\HPCHEM1\ECD\_Q\Method\PQ031120.M  
 Quant Title : GC EXTRACTABLES  
 QLast Update : Thu Mar 12 08:00:39 2020  
 Response via : Initial Calibration  
 Integrator: ChemStation

Volume Inj. : 2 µl  
 Signal #1 Phase : ZB-MR1 Signal #2 Phase: ZB-MR2  
 Signal #1 Info : 30Mx0.32mmx 0.50µ Signal #2 Info : 30M x 0.32mm x 0.25µm

Compound	RT#1	RT#2	Resp#1	Resp#2	ng/ml	ng/ml
-----						
System Monitoring Compounds						
1) SA Tetrachlo...	5.178	4.323	518.0E6	82699511	27.080	26.720
2) SA Decachlor...	11.306	9.737	129.1E6	38871591	13.843	15.128m

Target Compounds

(f)=RT Delta > 1/2 Window (#)=Amounts differ by > 25% (m)=manual int.

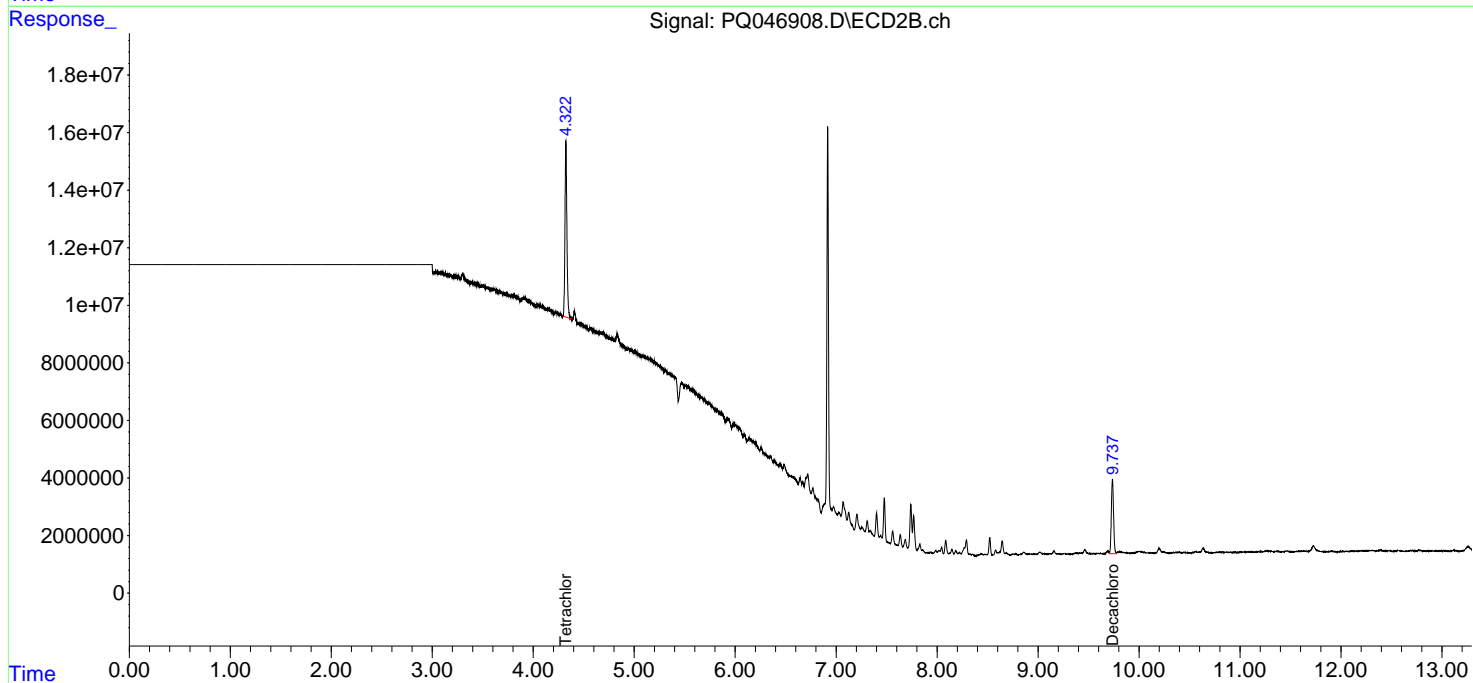
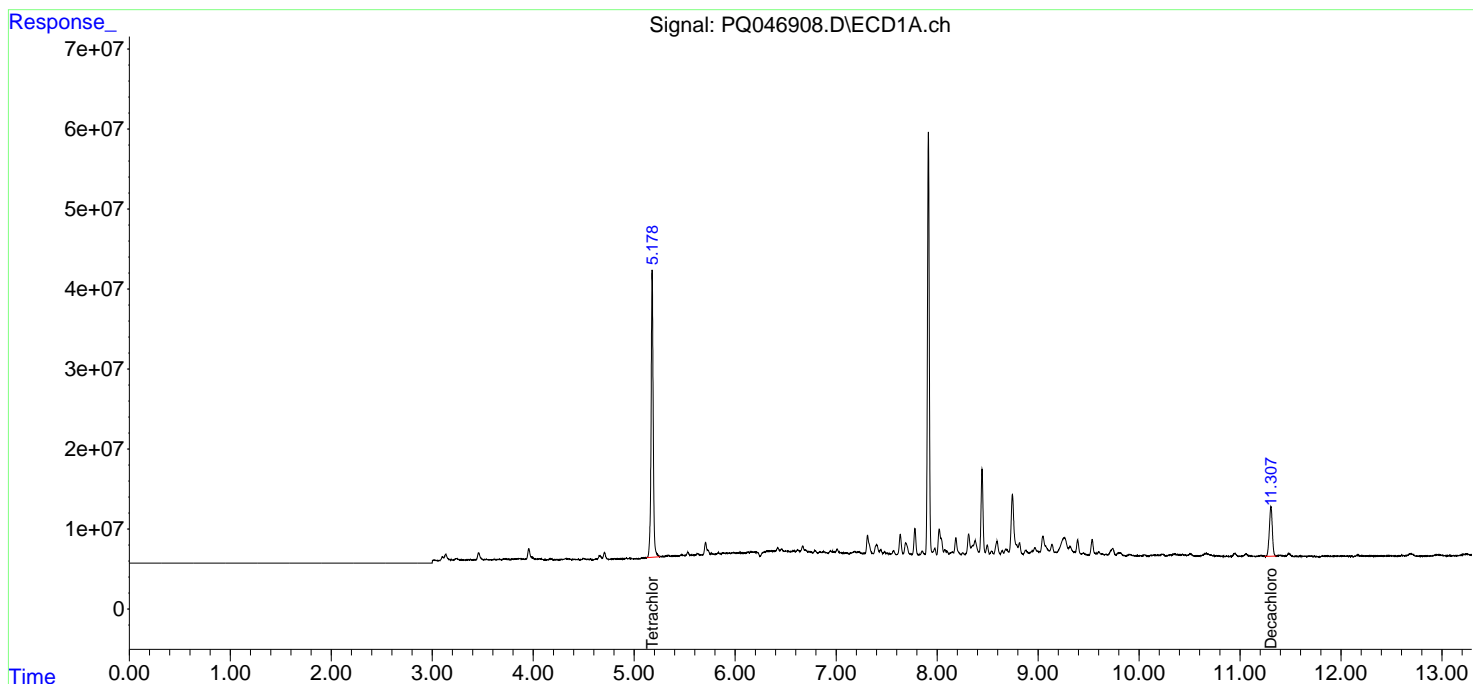
Data Path : Z:\pestpcbsrv\HPCHEM1\ECD\_Q\Data\PQ031220\  
 Data File : PQ046908.D  
 Signal(s) : Signal #1: ECD1A.ch Signal #2: ECD2B.ch  
 Acq On : 12 Mar 2020 10:03  
 Operator : AJ\MA  
 Sample : L1869-02  
 Misc :  
 ALS Vial : 5 Sample Multiplier: 1

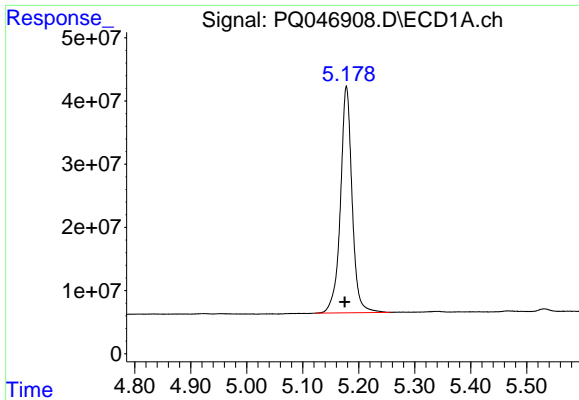
**Instrument :**  
 ECD\_Q  
**ClientSampled :**  
 S5-02-A

**Manual Integrations**  
**APPROVED**  
 Sohil  
 3/13/2020 8:32:48 AM

Integration File signal 1: autoint1.e  
 Integration File signal 2: autoint2.e  
 Quant Time: Mar 12 12:13:08 2020  
 Quant Method : Z:\pestpcbsrv\HPCHEM1\ECD\_Q\Method\PQ031120.M  
 Quant Title : GC EXTRACTABLES  
 QLast Update : Thu Mar 12 08:00:39 2020  
 Response via : Initial Calibration  
 Integrator: ChemStation

Volume Inj. : 2 µl  
 Signal #1 Phase : ZB-MR1 Signal #2 Phase: ZB-MR2  
 Signal #1 Info : 30Mx0.32mmx 0.50µm Signal #2 Info : 30M x 0.32mm x 0.25µm

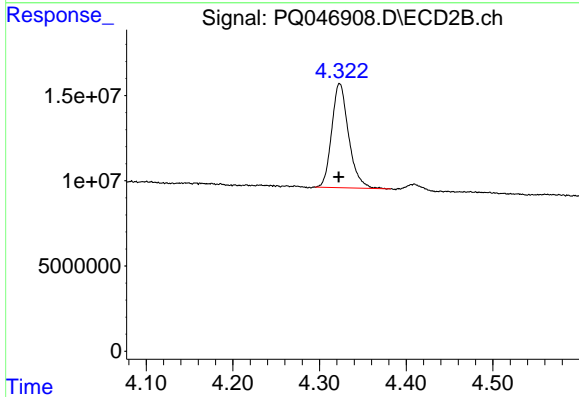




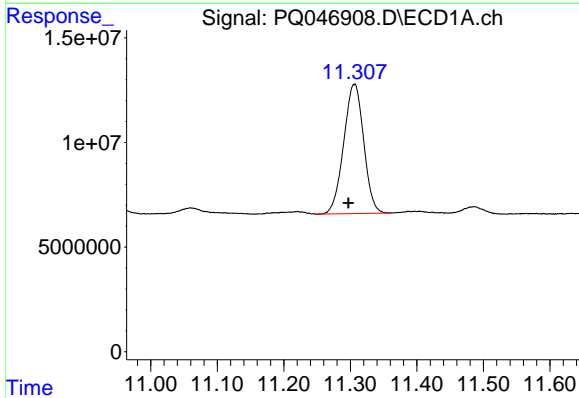
#1 Tetrachloro-m-xylene  
 R.T.: 5.178 min  
 Delta R.T.: 0.003 min  
 Response: 517950155  
 Conc: 27.08 ng/ml

Instrument :  
 ECD\_Q  
 ClientSampled :  
 S5-02-A

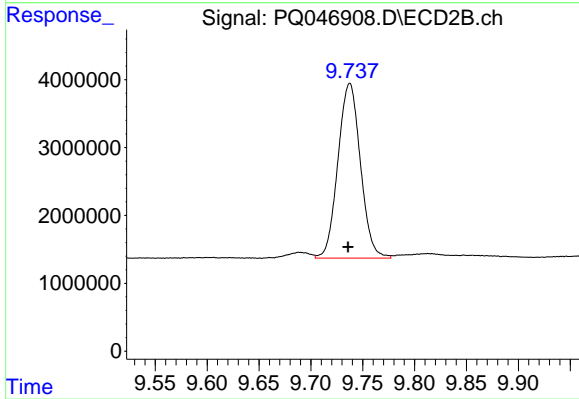
Manual Integrations  
 APPROVED  
 Sohil  
 3/13/2020 8:32:48 AM



#1 Tetrachloro-m-xylene  
 R.T.: 4.323 min  
 Delta R.T.: 0.001 min  
 Response: 82699511  
 Conc: 26.72 ng/ml



#2 Decachlorobiphenyl  
 R.T.: 11.306 min  
 Delta R.T.: 0.009 min  
 Response: 129075363  
 Conc: 13.84 ng/ml



#2 Decachlorobiphenyl  
 R.T.: 9.737 min  
 Delta R.T.: 0.001 min  
 Response: 38871591  
 Conc: 15.13 ng/ml m