

Data Path : Z:\pestpcbsrv\HPCHEM1\ECD_Q\Data\PQ031321\
 Data File : PQ052592.D
 Signal(s) : Signal #1: ECD1A.ch Signal #2: ECD2B.ch
 Acq On : 12 Mar 2021 21:57
 Operator : DD\AJ
 Sample : AR1248ICC750
 Misc :
 ALS Vial : 16 Sample Multiplier: 1

Instrument :
 ECD_Q
 ClientSampleId :
 AR1248ICC750

Integration File signal 1: autoint1.e
 Integration File signal 2: autoint2.e
 Quant Time: Mar 13 05:26:57 2021
 Quant Method : Z:\pestpcbsrv\HPCHEM1\ECD_Q\Method\PQ031321.M
 Quant Title : GC EXTRACTABLES
 QLast Update : Sat Mar 13 05:25:10 2021
 Response via : Initial Calibration
 Integrator: ChemStation

Volume Inj. : 2 µl
 Signal #1 Phase : ZB-MR1 Signal #2 Phase: ZB-MR2
 Signal #1 Info : 30Mx0.32mmx 0.50µ Signal #2 Info : 30M x 0.32mm x 0.25µm

Compound	RT#1	RT#2	Resp#1	Resp#2	ng/ml	ng/ml

System Monitoring Compounds						
1) SA Tetrachlo...	5.227	4.243	1695.2E6	613.2E6	74.829	74.871
2) SA Decachlor...	11.418	9.588	1982.0E6	716.3E6	73.782	74.176
Target Compounds						
21) L5 AR-1248-1	6.551	5.503	332.8E6	121.0E6	734.388	721.780
22) L5 AR-1248-2	6.845	5.767	466.2E6	164.6E6	724.707	720.841
23) L5 AR-1248-3	7.065	5.812	556.3E6	171.1E6	731.903	730.109
24) L5 AR-1248-4	7.493	5.997	696.9E6	211.6E6	724.965	728.517
25) L5 AR-1248-5	7.533	6.420	692.3E6	228.8E6	720.325	727.611

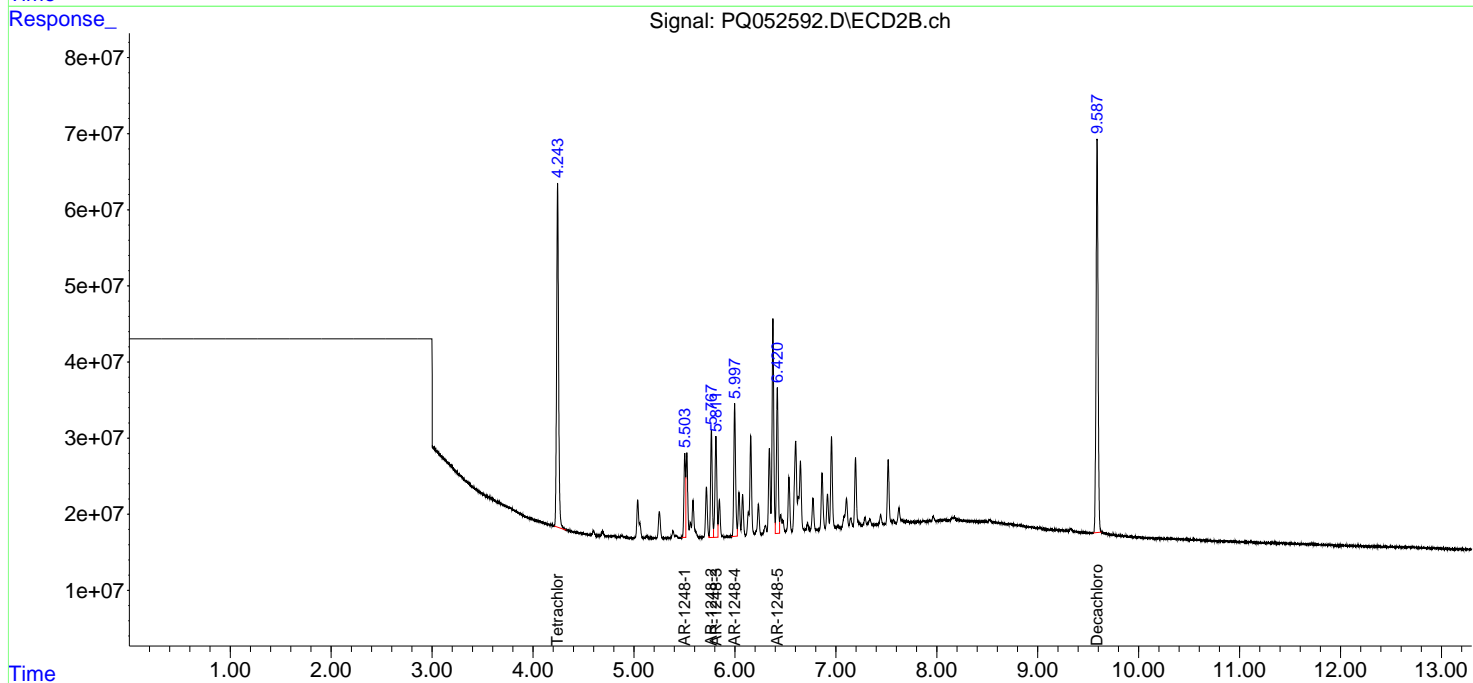
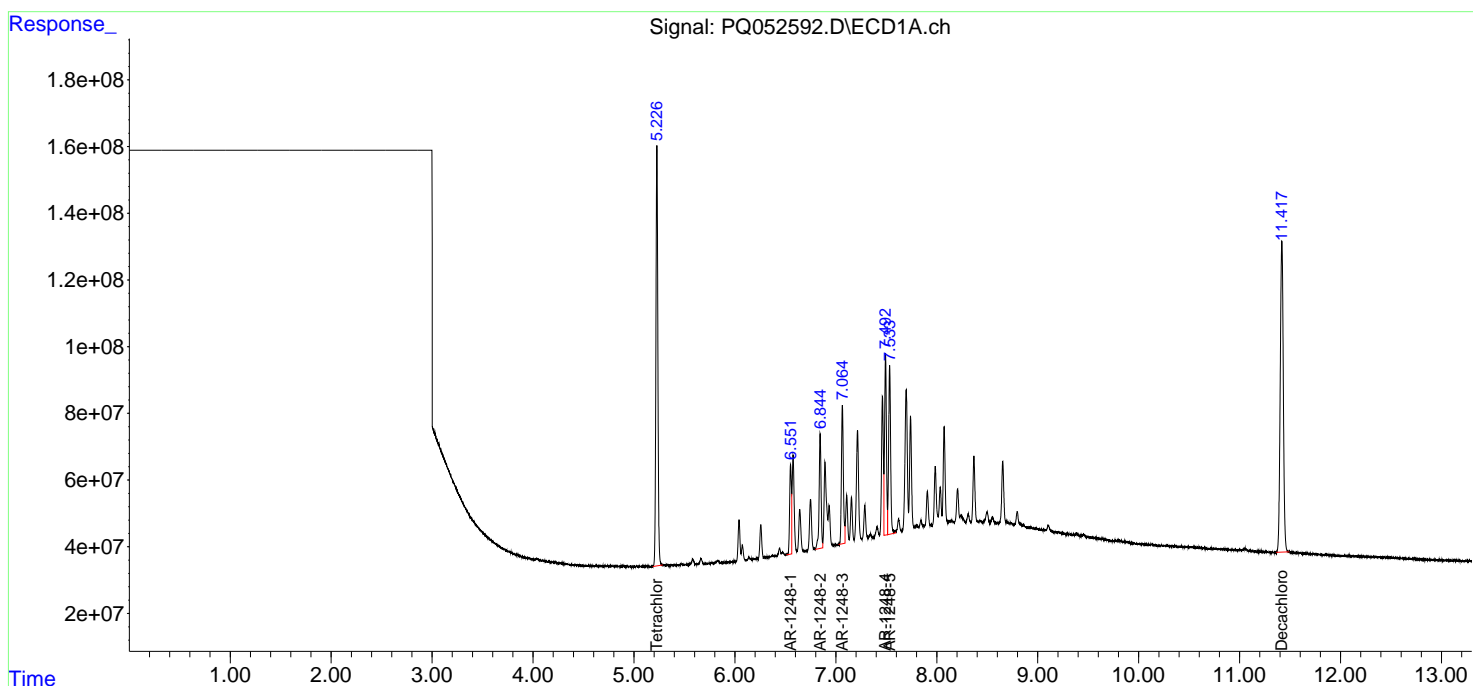
(f)=RT Delta > 1/2 Window (#)=Amounts differ by > 25% (m)=manual int.

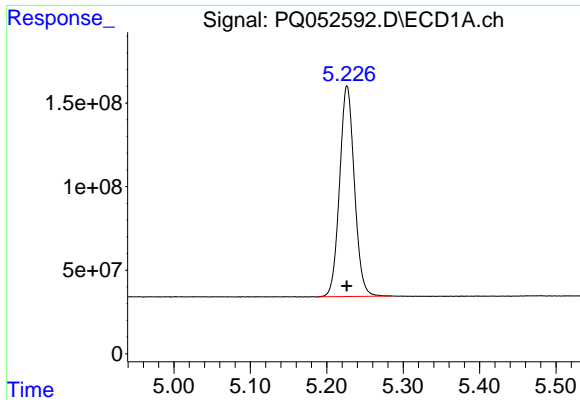
Data Path : Z:\pestpcbsrv\HPCHEM1\ECD_Q\Data\PQ031321\
 Data File : PQ052592.D
 Signal(s) : Signal #1: ECD1A.ch Signal #2: ECD2B.ch
 Acq On : 12 Mar 2021 21:57
 Operator : DD\AJ
 Sample : AR1248ICC750
 Misc :
 ALS Vial : 16 Sample Multiplier: 1

Instrument :
 ECD_Q
 ClientSampleId :
 AR1248ICC750

Integration File signal 1: autoint1.e
 Integration File signal 2: autoint2.e
 Quant Time: Mar 13 05:26:57 2021
 Quant Method : Z:\pestpcbsrv\HPCHEM1\ECD_Q\Method\PQ031321.M
 Quant Title : GC EXTRACTABLES
 QLast Update : Sat Mar 13 05:25:10 2021
 Response via : Initial Calibration
 Integrator: ChemStation

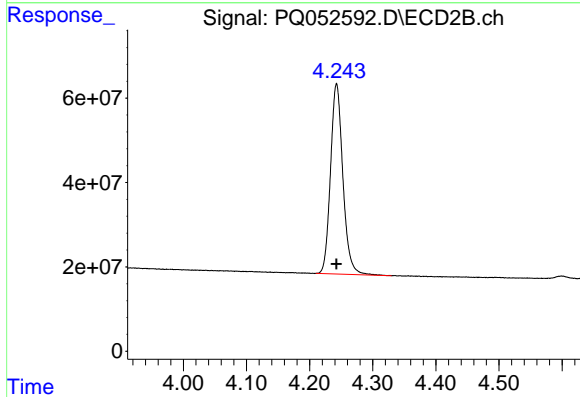
Volume Inj. : 2 µl
 Signal #1 Phase : ZB-MR1 Signal #2 Phase: ZB-MR2
 Signal #1 Info : 30Mx0.32mmx 0.50µ Signal #2 Info : 30M x 0.32mm x 0.25µm



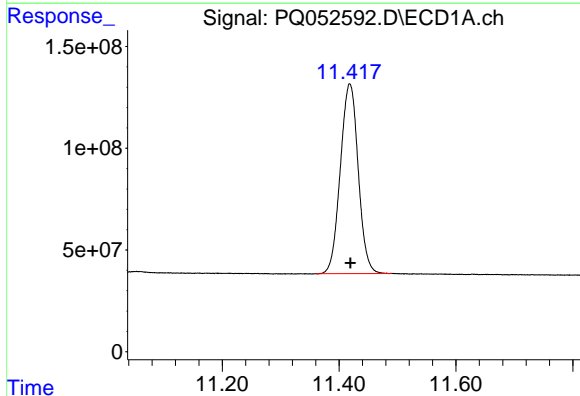


#1 Tetrachloro-m-xylene
 R.T.: 5.227 min
 Delta R.T.: 0.000 min
 Response: 1695206830
 Conc: 74.83 ng/ml

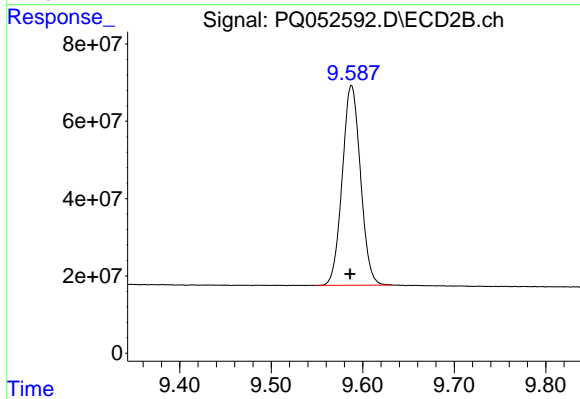
Instrument :
 ECD_Q
 ClientSampleId :
 AR1248ICC750



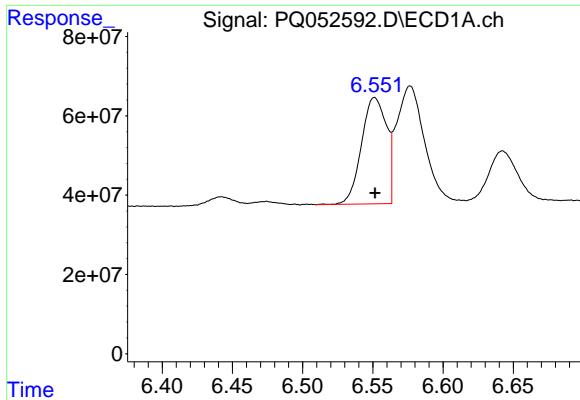
#1 Tetrachloro-m-xylene
 R.T.: 4.243 min
 Delta R.T.: 0.000 min
 Response: 613236978
 Conc: 74.87 ng/ml



#2 Decachlorobiphenyl
 R.T.: 11.418 min
 Delta R.T.: -0.001 min
 Response: 1981973281
 Conc: 73.78 ng/ml

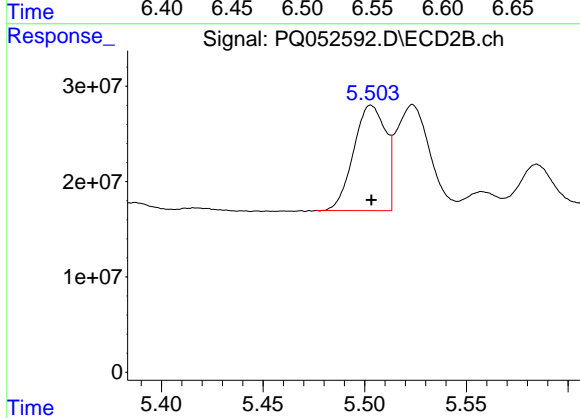


#2 Decachlorobiphenyl
 R.T.: 9.588 min
 Delta R.T.: 0.001 min
 Response: 716298629
 Conc: 74.18 ng/ml

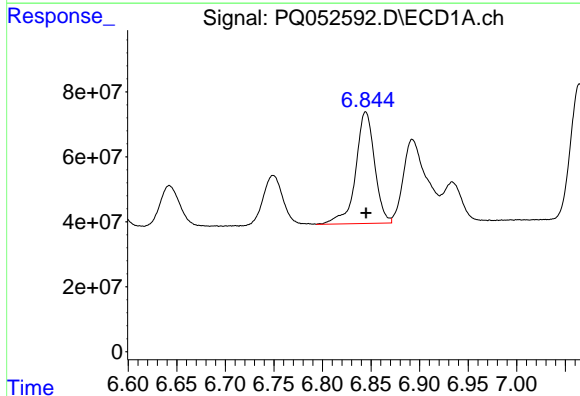


#21 AR-1248-1
 R.T.: 6.551 min
 Delta R.T.: 0.000 min
 Response: 332806467
 Conc: 734.39 ng/ml

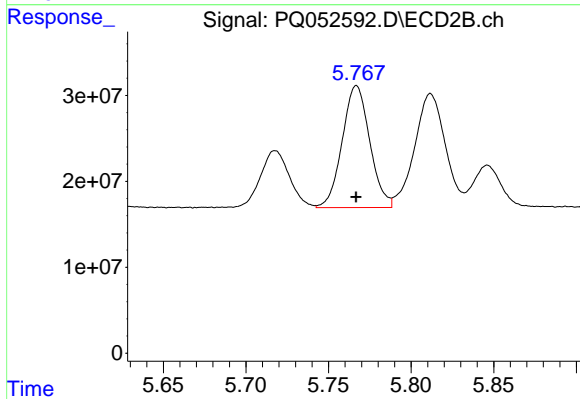
Instrument :
 ECD_Q
 ClientSampleId :
 AR1248ICC750



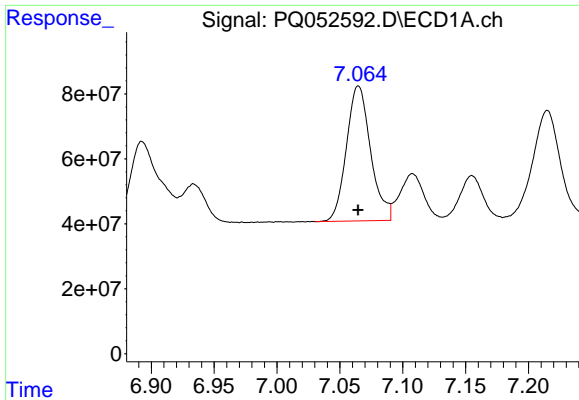
#21 AR-1248-1
 R.T.: 5.503 min
 Delta R.T.: 0.000 min
 Response: 120991668
 Conc: 721.78 ng/ml



#22 AR-1248-2
 R.T.: 6.845 min
 Delta R.T.: 0.000 min
 Response: 466190664
 Conc: 724.71 ng/ml



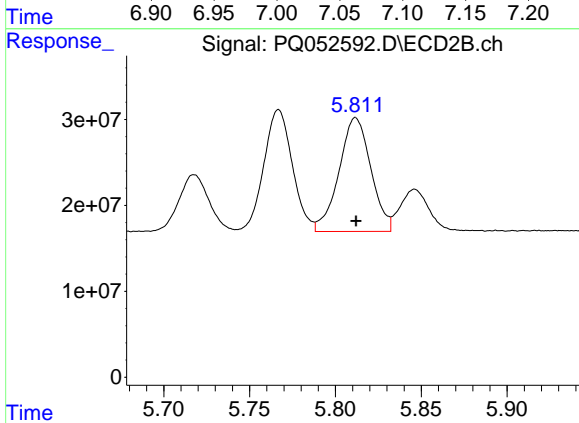
#22 AR-1248-2
 R.T.: 5.767 min
 Delta R.T.: 0.000 min
 Response: 164619243
 Conc: 720.84 ng/ml



#23 AR-1248-3

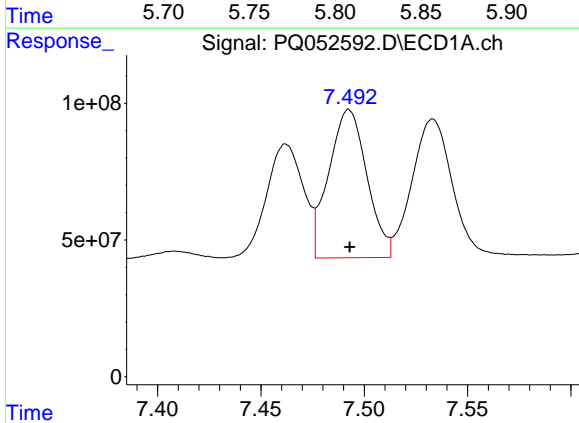
R.T.: 7.065 min
 Delta R.T.: 0.000 min
 Response: 556325316
 Conc: 731.90 ng/ml

Instrument :
 ECD_Q
 ClientSampled :
 AR1248ICC750



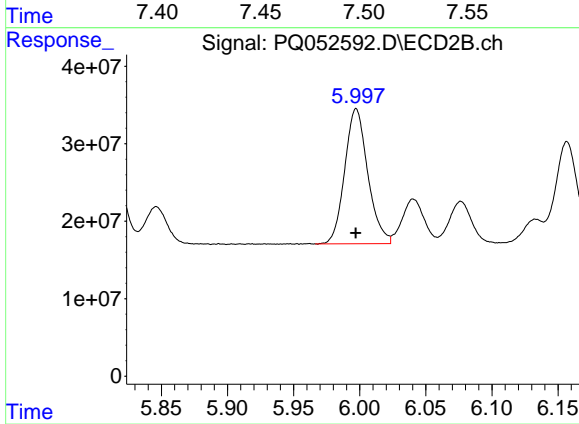
#23 AR-1248-3

R.T.: 5.812 min
 Delta R.T.: 0.000 min
 Response: 171101851
 Conc: 730.11 ng/ml



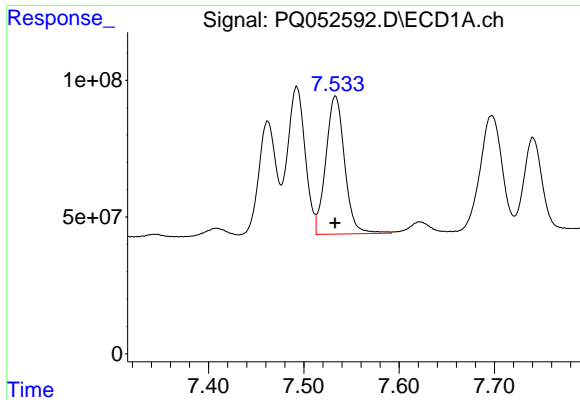
#24 AR-1248-4

R.T.: 7.493 min
 Delta R.T.: 0.000 min
 Response: 696910442
 Conc: 724.97 ng/ml



#24 AR-1248-4

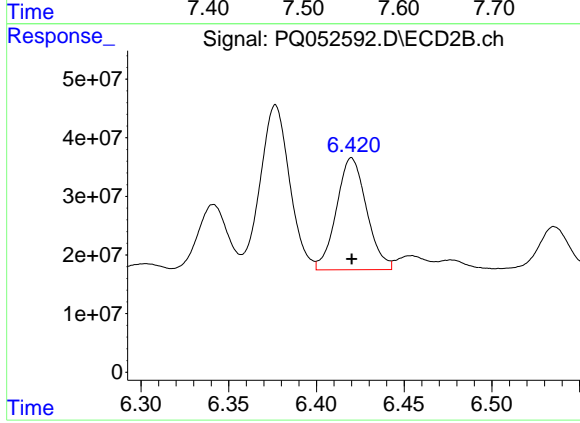
R.T.: 5.997 min
 Delta R.T.: 0.000 min
 Response: 211627825
 Conc: 728.52 ng/ml



#25 AR-1248-5

R.T.: 7.533 min
Delta R.T.: 0.000 min
Response: 692318831
Conc: 720.32 ng/ml

Instrument :
ECD_Q
ClientSampled :
AR1248ICC750



#25 AR-1248-5

R.T.: 6.420 min
Delta R.T.: 0.000 min
Response: 228805371
Conc: 727.61 ng/ml