

Data Path : Z:\pestpcbsrv\HPCHEM1\ECD\_Q\Data\PQ031721\  
 Data File : PQ052663.D  
 Signal(s) : Signal #1: ECD1A.ch Signal #2: ECD2B.ch  
 Acq On : 17 Mar 2021 18:36  
 Operator : DD\AJ  
 Sample : AR1242ICC200  
 Misc :  
 ALS Vial : 19 Sample Multiplier: 1

Instrument :  
 ECD\_Q  
 ClientSampleId :

Integration File signal 1: autoint1.e  
 Integration File signal 2: autoint2.e  
 Quant Time: Mar 18 04:24:17 2021  
 Quant Method : Z:\pestpcbsrv\HPCHEM1\ECD\_Q\Method\PQ031721CLP.M  
 Quant Title : GC EXTRACTABLES  
 QLast Update : Thu Mar 18 04:23:34 2021  
 Response via : Initial Calibration  
 Integrator: ChemStation

Volume Inj. : 1 µl  
 Signal #1 Phase : ZB MR1 Signal #2 Phase: ZB MR2  
 Signal #1 Info : 30Mx0.32mmx 0.5µm Signal #2 Info : 30M x 0.32mm x 0.25µm

Compound	RT#1	RT#2	Resp#1	Resp#2	ng/ml	ng/ml
-----						
System Monitoring Compounds						
1) SA Tetrachlo...	5.226	4.243	246.3E6	100.6E6	10.400	10.364
2) SA Decachlor...	11.413	9.582	608.2E6	213.5E6	22.166	20.958
Target Compounds						
16) L4 AR-1242-1	6.549	5.500	169.9E6	75683859	212.713	215.075
17) L4 AR-1242-2	6.573	5.521	250.2E6	104.7E6	213.397	208.286
18) L4 AR-1242-3	6.640	5.713	152.4E6	54909670	215.202	210.902
19) L4 AR-1242-4	6.748	5.809	125.7E6	52358249	213.535	213.339
20) L4 AR-1242-5	7.529	6.373	143.5E6	74048745	217.500	214.303
-----						

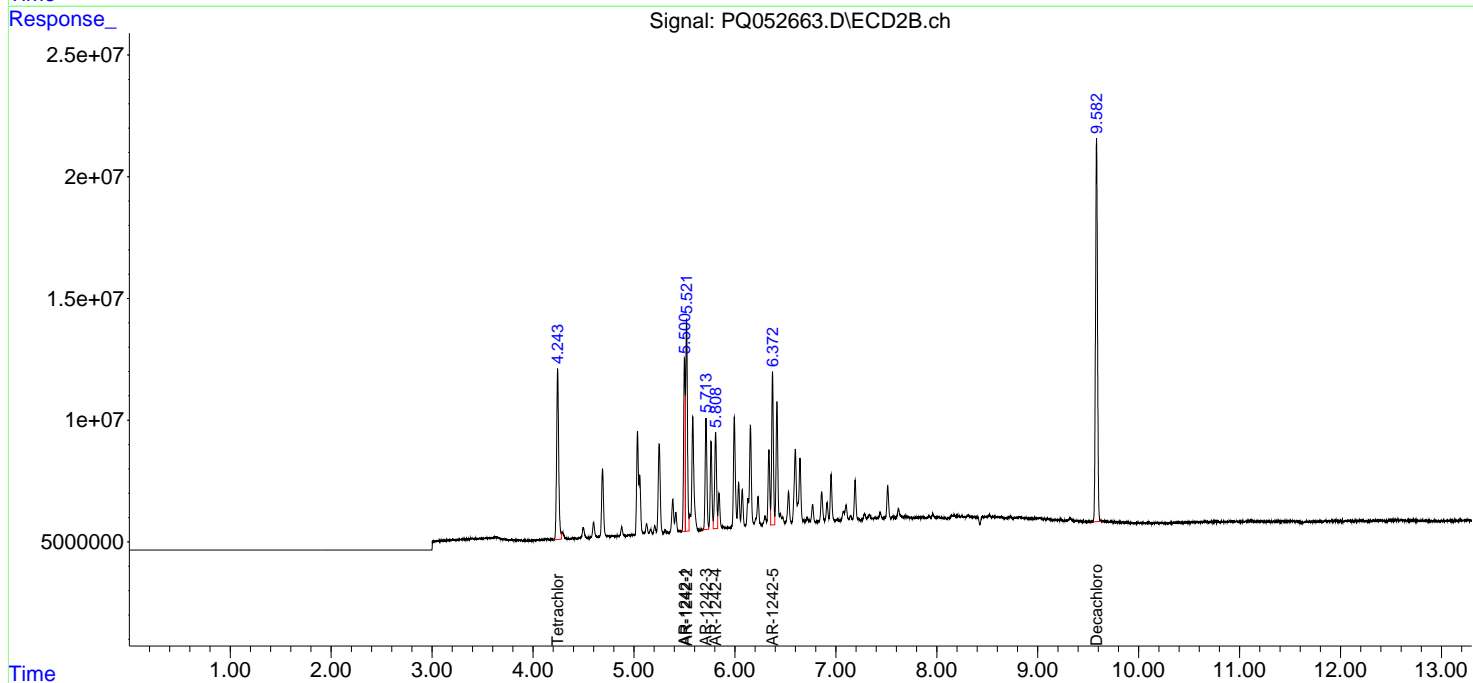
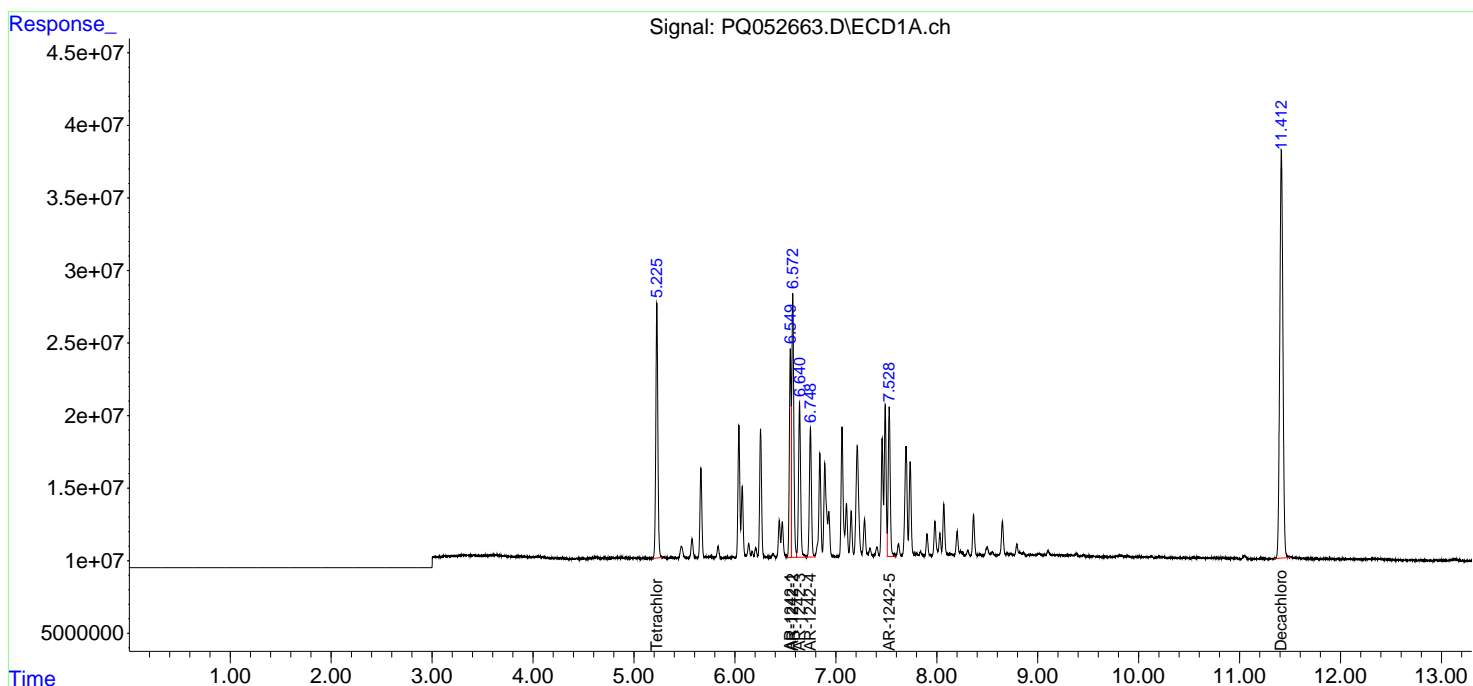
(f)=RT Delta > 1/2 Window (#)=Amounts differ by > 25% (m)=manual int.

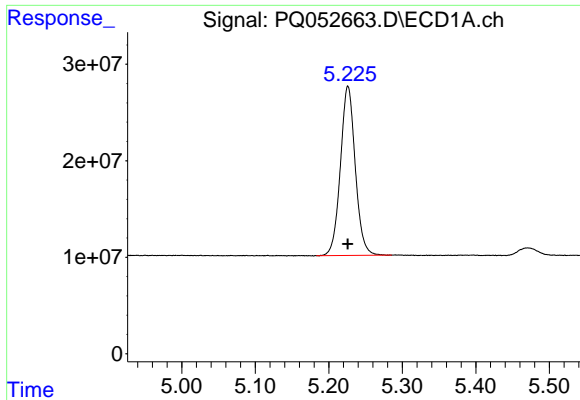
Data Path : Z:\pestpcbsrv\HPCHEM1\ECD\_Q\Data\PQ031721\  
 Data File : PQ052663.D  
 Signal(s) : Signal #1: ECD1A.ch Signal #2: ECD2B.ch  
 Acq On : 17 Mar 2021 18:36  
 Operator : DD\AJ  
 Sample : AR1242ICC200  
 Misc :  
 ALS Vial : 19 Sample Multiplier: 1

Instrument :  
 ECD\_Q  
 ClientSampled :

Integration File signal 1: autoint1.e  
 Integration File signal 2: autoint2.e  
 Quant Time: Mar 18 04:24:17 2021  
 Quant Method : Z:\pestpcbsrv\HPCHEM1\ECD\_Q\Method\PQ031721CLP.M  
 Quant Title : GC EXTRACTABLES  
 QLast Update : Thu Mar 18 04:23:34 2021  
 Response via : Initial Calibration  
 Integrator: ChemStation

Volume Inj. : 1 µl  
 Signal #1 Phase : ZB MR1 Signal #2 Phase: ZB MR2  
 Signal #1 Info : 30Mx0.32mmx 0.5µm Signal #2 Info : 30M x 0.32mm x 0.25µm

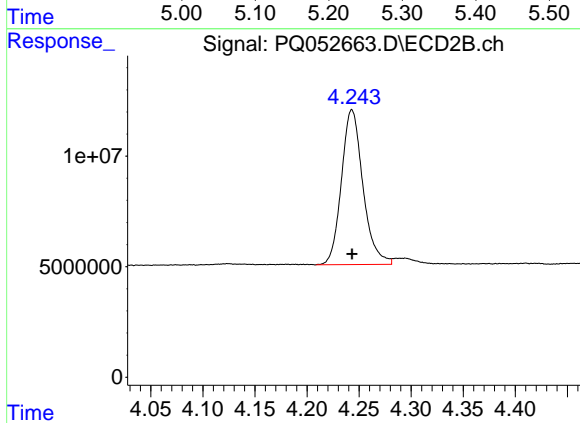




#1 Tetrachloro-m-xylene

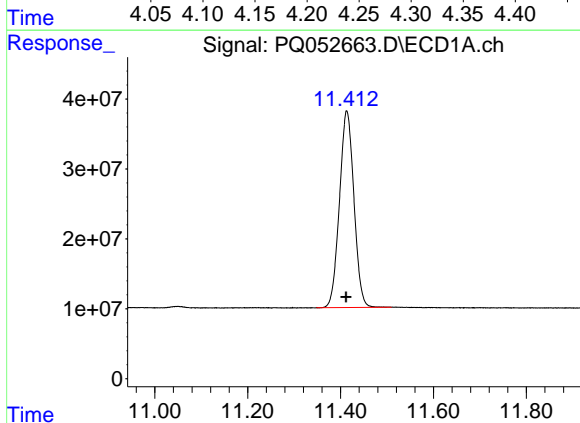
R.T.: 5.226 min  
Delta R.T.: 0.000 min  
Response: 246299886  
Conc: 10.40 ng/ml

Instrument :  
ECD\_Q  
ClientSampled :



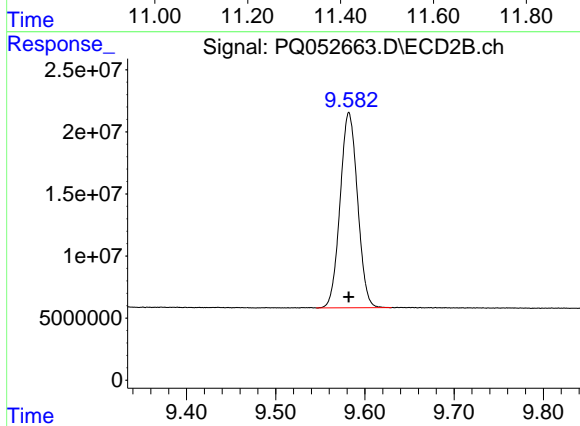
#1 Tetrachloro-m-xylene

R.T.: 4.243 min  
Delta R.T.: 0.000 min  
Response: 100603294  
Conc: 10.36 ng/ml



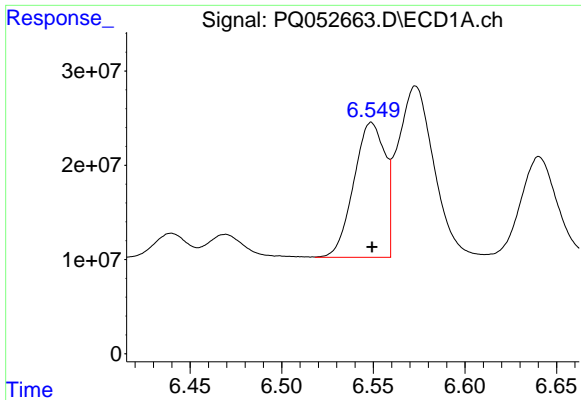
#2 Decachlorobiphenyl

R.T.: 11.413 min  
Delta R.T.: 0.001 min  
Response: 608164506  
Conc: 22.17 ng/ml



#2 Decachlorobiphenyl

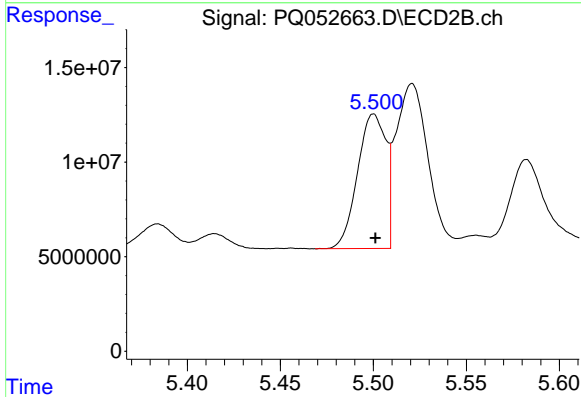
R.T.: 9.582 min  
Delta R.T.: 0.000 min  
Response: 213532343  
Conc: 20.96 ng/ml



#16 AR-1242-1

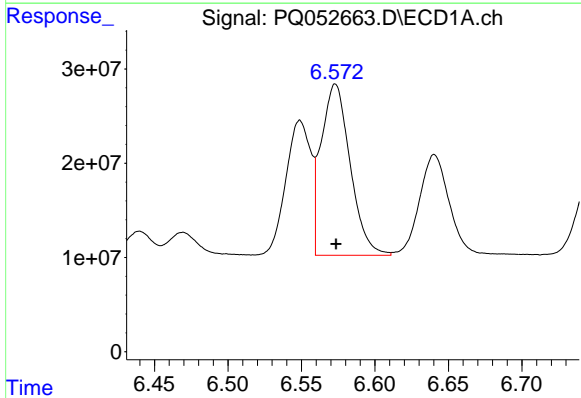
R.T.: 6.549 min  
 Delta R.T.: 0.000 min  
 Response: 169896579  
 Conc: 212.71 ng/ml

Instrument :  
 ECD\_Q  
 ClientSampled :



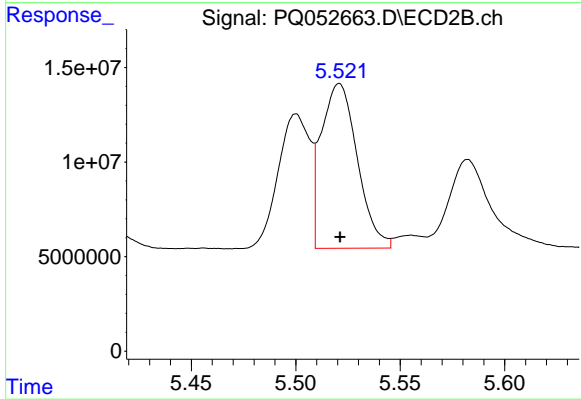
#16 AR-1242-1

R.T.: 5.500 min  
 Delta R.T.: 0.000 min  
 Response: 75683859  
 Conc: 215.07 ng/ml



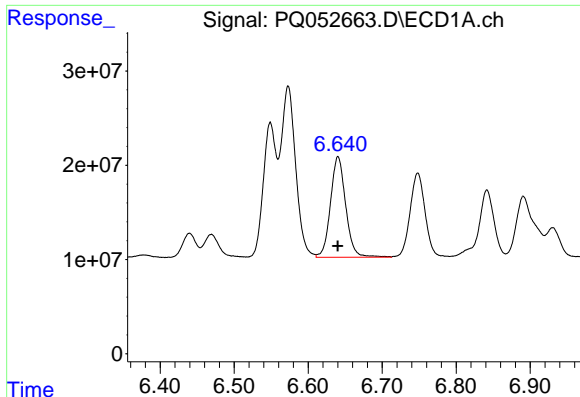
#17 AR-1242-2

R.T.: 6.573 min  
 Delta R.T.: 0.000 min  
 Response: 250156263  
 Conc: 213.40 ng/ml



#17 AR-1242-2

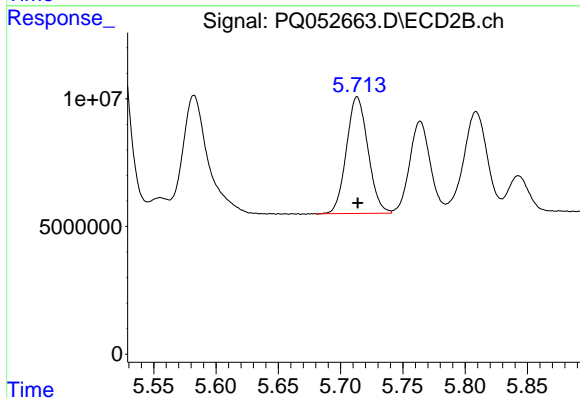
R.T.: 5.521 min  
 Delta R.T.: 0.000 min  
 Response: 104735495  
 Conc: 208.29 ng/ml



#18 AR-1242-3

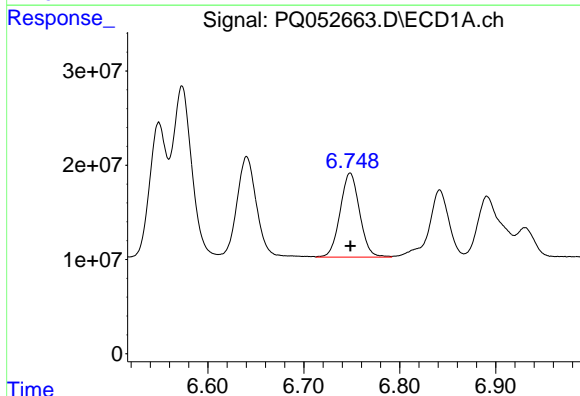
R.T.: 6.640 min  
 Delta R.T.: 0.000 min  
 Response: 152446728  
 Conc: 215.20 ng/ml

Instrument :  
 ECD\_Q  
 ClientSampleId :



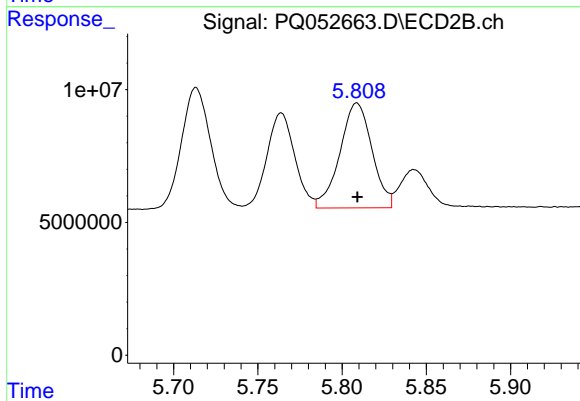
#18 AR-1242-3

R.T.: 5.713 min  
 Delta R.T.: 0.000 min  
 Response: 54909670  
 Conc: 210.90 ng/ml



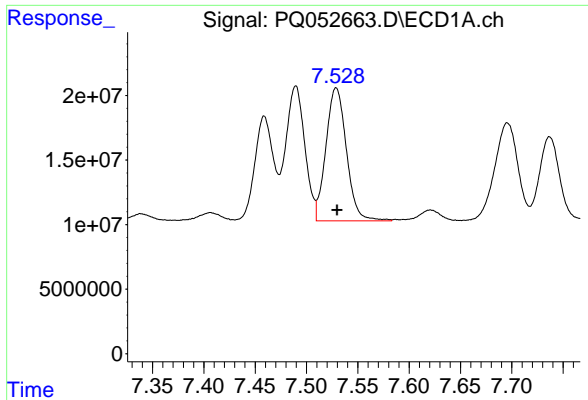
#19 AR-1242-4

R.T.: 6.748 min  
 Delta R.T.: 0.000 min  
 Response: 125717710  
 Conc: 213.54 ng/ml



#19 AR-1242-4

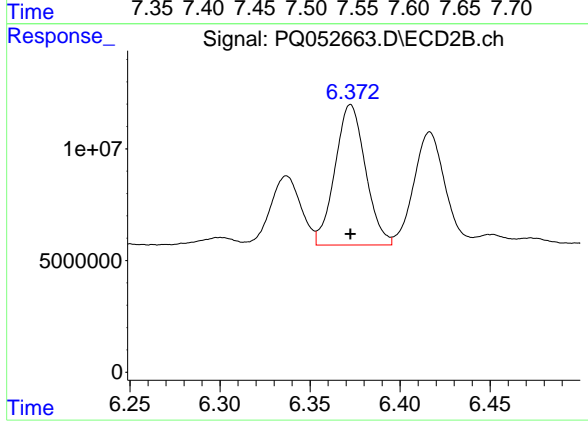
R.T.: 5.809 min  
 Delta R.T.: 0.000 min  
 Response: 52358249  
 Conc: 213.34 ng/ml



#20 AR-1242-5

R.T.: 7.529 min  
Delta R.T.: 0.000 min  
Response: 143539498  
Conc: 217.50 ng/ml

Instrument :  
ECD\_Q  
ClientSampleId :



#20 AR-1242-5

R.T.: 6.373 min  
Delta R.T.: 0.000 min  
Response: 74048745  
Conc: 214.30 ng/ml