

Data Path : Z:\pestpcbsrv\HPCHEM1\ECD_Q\Data\PQ031822\
 Data File : PQ056698.D
 Signal(s) : Signal #1: ECD1A.ch Signal #2: ECD2B.ch
 Acq On : 18 Mar 2022 09:01
 Operator : YP\AJ
 Sample : AR1660CCC400
 Misc :
 ALS Vial : 3 Sample Multiplier: 1

Instrument :
 ECD_Q
 ClientSampleId :

Integration File signal 1: autoint1.e
 Integration File signal 2: autoint2.e
 Quant Time: Mar 21 04:57:21 2022
 Quant Method : Z:\pestpcbsrv\HPCHEM1\ECD_Q\Method\PQ031522CLP.M
 Quant Title : GC EXTRACTABLES
 QLast Update : Wed Mar 16 09:32:52 2022
 Response via : Initial Calibration
 Integrator: ChemStation

Volume Inj. : 1 µl
 Signal #1 Phase : ZB MR1 Signal #2 Phase: ZB MR2
 Signal #1 Info : 30Mx0.32mmx 0.5µm Signal #2 Info : 30M x 0.32mm x 0.25µm

Compound	RT#1	RT#2	Resp#1	Resp#2	ng/ml	ng/ml

System Monitoring Compounds						
1) SA Tetrachlo...	4.531	3.748	299.6E6	237.6E6	19.974	19.569
2) SA Decachlor...	10.308	8.688	619.9E6	395.4E6	43.570	40.286
Target Compounds						
3) L1 AR-1016-1	5.709	4.816	131.9E6	146.8E6	410.586	386.506
4) L1 AR-1016-2	5.732	4.835	269.2E6	251.6E6	405.297	388.553
5) L1 AR-1016-3	5.793	5.008	183.1E6	114.8E6	417.780	387.926
6) L1 AR-1016-4	5.895	5.045	146.8E6	96020893	418.106	393.332
7) L1 AR-1016-5	6.181	5.257	117.5E6	121.2E6	412.939	390.002
8) L2 AR-1221-1	4.748	3.956	13782298	13297605	96.927	104.901
9) L2 AR-1221-2	4.835	4.042	20861158	16938096	203.135	195.255
10) L2 AR-1221-3	4.913	4.117	90073163	77766653	252.027	250.262
11) L3 AR-1232-1	4.913	4.117	90073163	77766653	314.141	308.343
12) L3 AR-1232-2	5.437	4.835	144.2E6	251.6E6	912.014	927.608
13) L3 AR-1232-3	5.732	5.008	269.2E6	114.8E6	939.098	960.412
14) L3 AR-1232-4	5.895	5.088	146.8E6	115.8E6	1010.687	1050.879
15) L3 AR-1232-5	5.975	5.257	102.9E6	121.2E6	1144.364	973.820
16) L4 AR-1242-1	5.709	4.816	131.9E6	146.8E6	534.418	496.188
17) L4 AR-1242-2	5.732	4.835	269.2E6	251.6E6	505.066	492.737
18) L4 AR-1242-3	5.793	5.008	183.1E6	114.8E6	514.744	495.842
19) L4 AR-1242-4	5.895	5.088	146.8E6	115.8E6	526.387	499.477
20) L4 AR-1242-5	6.629	5.602	23333521	88027918	80.289	294.744 #
21) L5 AR-1248-1	5.709	4.816	131.9E6	146.8E6	759.709	686.809
22) L5 AR-1248-2	5.975	5.045	102.9E6	96020893	349.452	302.289
23) L5 AR-1248-3	6.181	5.088	117.5E6	115.8E6	323.418	346.264
24) L5 AR-1248-4	6.589	5.257	22914957	121.2E6	55.826	304.828 #
25) L5 AR-1248-5	6.629	5.646	23333521	13988841	49.443	34.250 #
26) L6 AR-1254-1	6.556	5.602	72938805	88027918	178.223	131.126 #
27) L6 AR-1254-2	6.772	5.747	80273025	78267201	123.161	136.888
28) L6 AR-1254-3	7.144	6.159	50147895	155.6E6	62.965	164.472 #
29) L6 AR-1254-4	7.431	6.373	32802785	18715392	62.812	27.858 #
30) L6 AR-1254-5	7.847	6.782	289.4E6	288.7E6	476.185	353.807 #
31) L7 AR-1260-1	7.302	6.272	184.1E6	218.8E6	396.429	388.104
32) L7 AR-1260-2	7.559	6.459	219.0E6	266.5E6	398.036	389.687
33) L7 AR-1260-3	7.847	6.610	289.4E6	248.0E6	408.370	387.651
34) L7 AR-1260-4	8.147	7.075	219.2E6	207.8E6	406.683	387.654
35) L7 AR-1260-5	8.476	7.315	509.4E6	512.2E6	439.045	385.671
36) L8 AR-1262-1	7.916	6.782	190.5E6	288.7E6	269.031	684.406 #
37) L8 AR-1262-2	8.476	7.315	509.4E6	512.2E6	343.397	319.795
38) L8 AR-1262-3	8.789	7.594	136.4E6	107.4E6	197.640	180.198
39) L8 AR-1262-4	8.881	7.658	115.4E6	368.4E6	170.530	319.047 #
40) L8 AR-1262-5	9.555	8.150	187.3E6	124.1E6	294.793	249.776
41) L9 AR-1268-1	8.789	7.594	136.4E6	107.4E6	73.581	59.137

Data Path : Z:\pestpcbsrv\HPCHEM1\ECD_Q\Data\PQ031822\
 Data File : PQ056698.D
 Signal(s) : Signal #1: ECD1A.ch Signal #2: ECD2B.ch
 Acq On : 18 Mar 2022 09:01
 Operator : YP\AJ
 Sample : AR1660CCC400
 Misc :
 ALS Vial : 3 Sample Multiplier: 1

Instrument :
 ECD_Q
 ClientSampleId :

Integration File signal 1: autoint1.e
 Integration File signal 2: autoint2.e
 Quant Time: Mar 21 04:57:21 2022
 Quant Method : Z:\pestpcbsrv\HPCHEM1\ECD_Q\Method\PQ031522CLP.M
 Quant Title : GC EXTRACTABLES
 QLast Update : Wed Mar 16 09:32:52 2022
 Response via : Initial Calibration
 Integrator: ChemStation

Volume Inj. : 1 µl
 Signal #1 Phase : ZB MR1 Signal #2 Phase: ZB MR2
 Signal #1 Info : 30Mx0.32mmx 0.5µm Signal #2 Info : 30M x 0.32mm x 0.25µm

	Compound	RT#1	RT#2	Resp#1	Resp#2	ng/ml	ng/ml
42)	L9 AR-1268-2	8.881	7.658	115.4E6	368.4E6	57.681	222.664 #
43)	L9 AR-1268-3	9.110	7.863	9640770	4799913	5.497	3.501 #
44)	L9 AR-1268-4	9.555	8.150	187.3E6	124.1E6	267.348	223.201
45)	L9 AR-1268-5	9.972	8.438	56525146	32114139	9.294	7.392

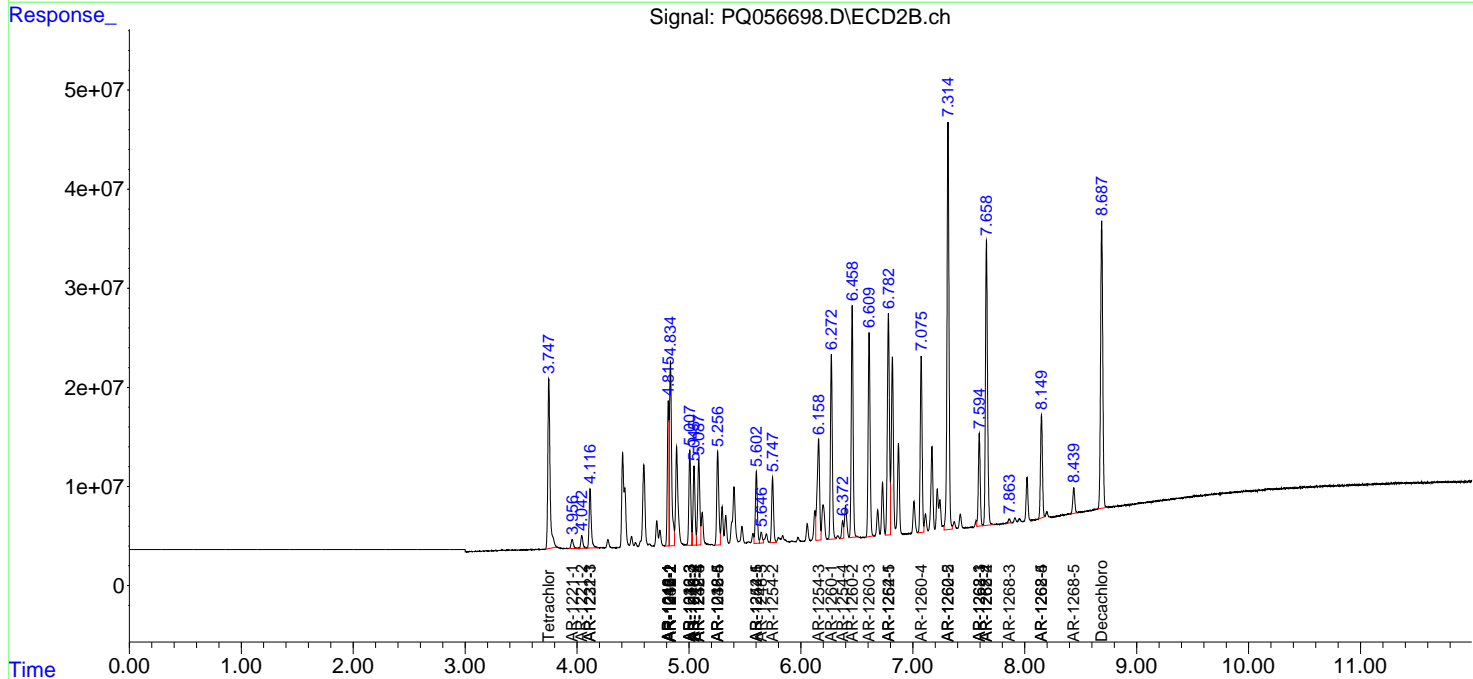
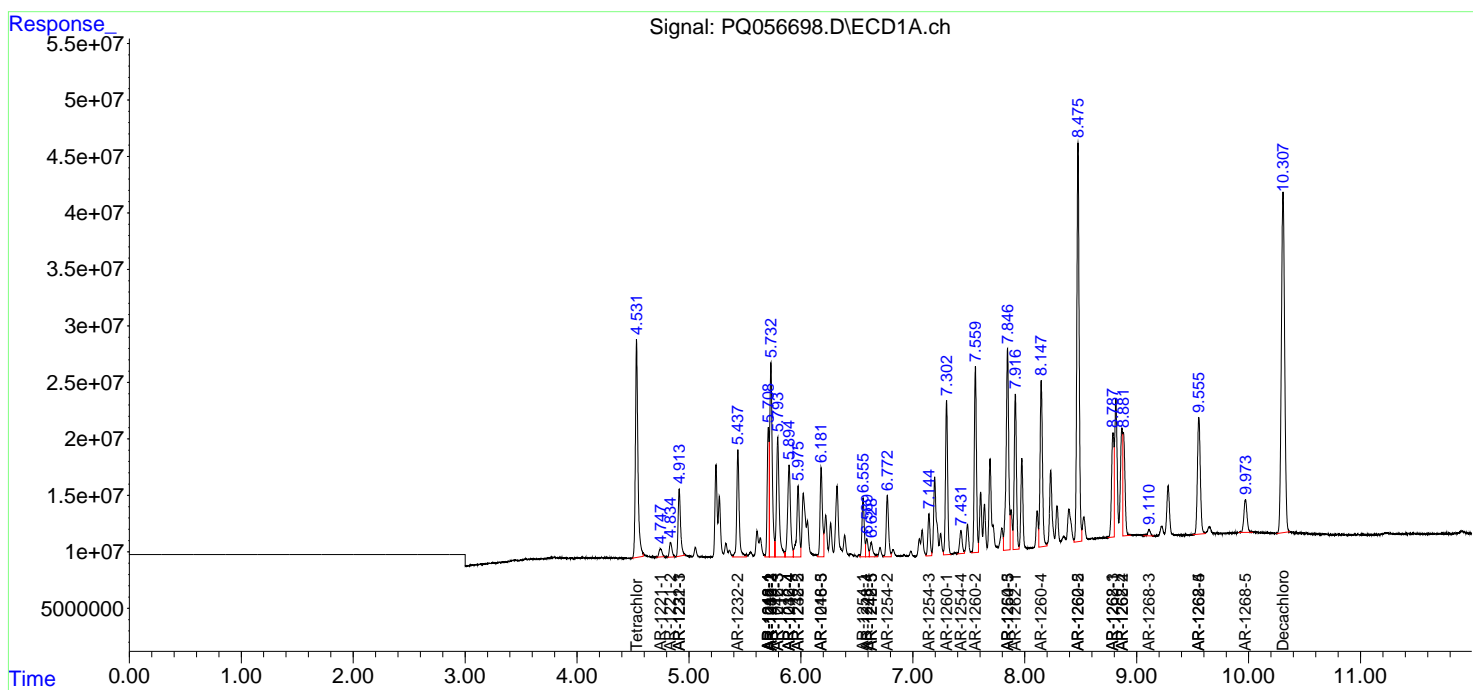
(f)=RT Delta > 1/2 Window (#)=Amounts differ by > 25% (m)=manual int.

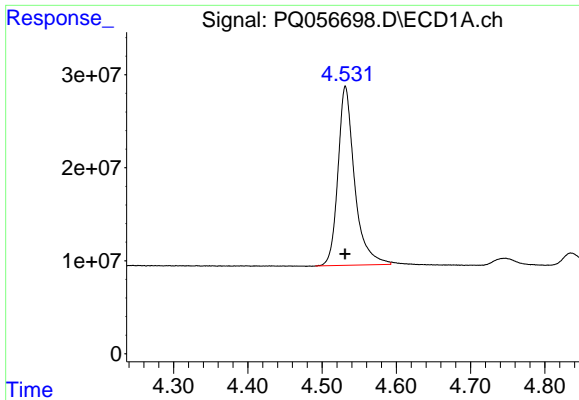
Data Path : Z:\pestpcbsrv\HPCHEM1\ECD_Q\Data\PQ031822\
 Data File : PQ056698.D
 Signal(s) : Signal #1: ECD1A.ch Signal #2: ECD2B.ch
 Acq On : 18 Mar 2022 09:01
 Operator : YP\AJ
 Sample : AR1660CCC400
 Misc :
 ALS Vial : 3 Sample Multiplier: 1

Instrument :
 ECD_Q
 ClientSampleId :

Integration File signal 1: autoint1.e
 Integration File signal 2: autoint2.e
 Quant Time: Mar 21 04:57:21 2022
 Quant Method : Z:\pestpcbsrv\HPCHEM1\ECD_Q\Method\PQ031522CLP.M
 Quant Title : GC EXTRACTABLES
 QLast Update : Wed Mar 16 09:32:52 2022
 Response via : Initial Calibration
 Integrator: ChemStation

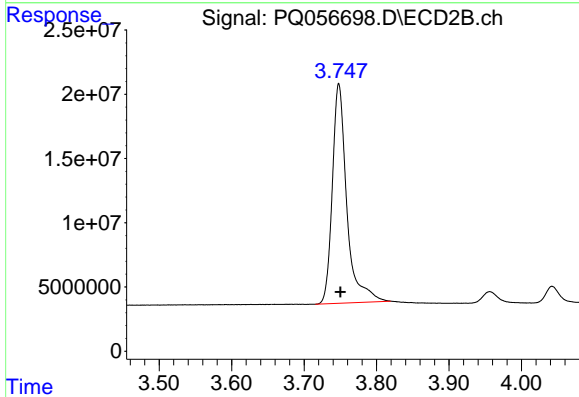
Volume Inj. : 1 µl
 Signal #1 Phase : ZB MR1 Signal #2 Phase: ZB MR2
 Signal #1 Info : 30Mx0.32mmx 0.5µm Signal #2 Info : 30M x 0.32mm x 0.25µm



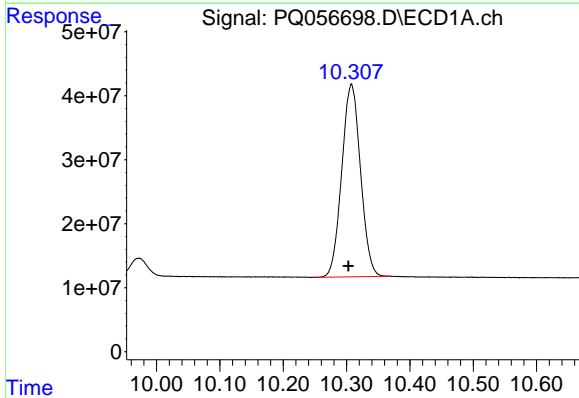


#1 Tetrachloro-m-xylene
 R.T.: 4.531 min
 Delta R.T.: 0.000 min
 Response: 299616677
 Conc: 19.97 ng/ml

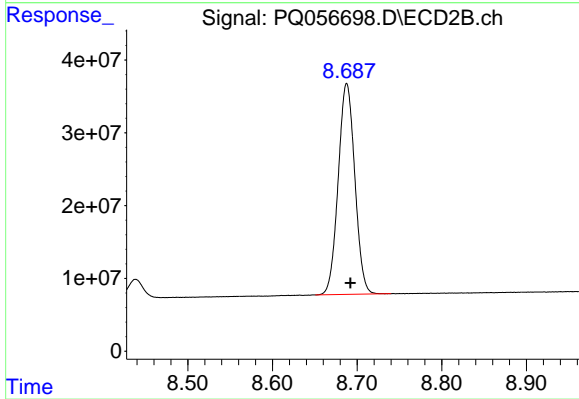
Instrument :
 ECD_Q
 ClientSampleId :



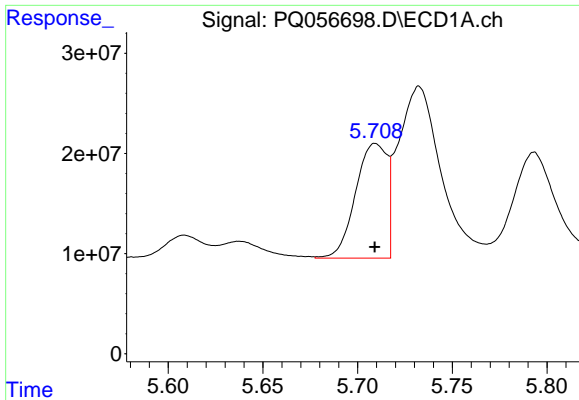
#1 Tetrachloro-m-xylene
 R.T.: 3.748 min
 Delta R.T.: -0.002 min
 Response: 237582020
 Conc: 19.57 ng/ml



#2 Decachlorobiphenyl
 R.T.: 10.308 min
 Delta R.T.: 0.005 min
 Response: 619854561
 Conc: 43.57 ng/ml



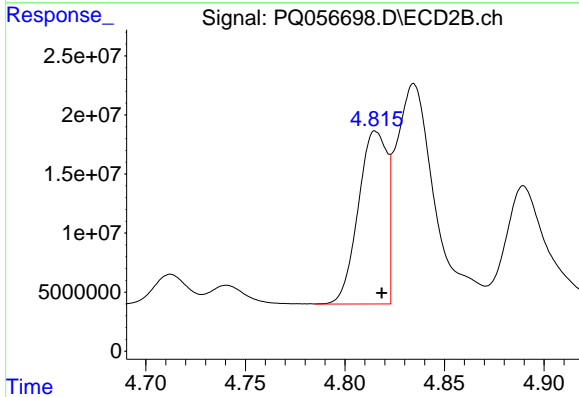
#2 Decachlorobiphenyl
 R.T.: 8.688 min
 Delta R.T.: -0.004 min
 Response: 395389359
 Conc: 40.29 ng/ml



#3 AR-1016-1

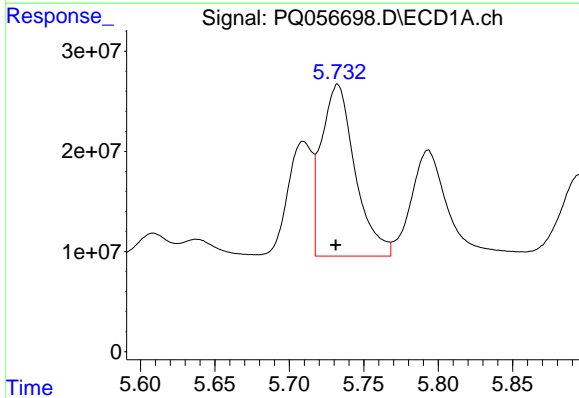
R.T.: 5.709 min
 Delta R.T.: 0.000 min
 Response: 131867747
 Conc: 410.59 ng/ml

Instrument :
 ECD_Q
 ClientSampleId :



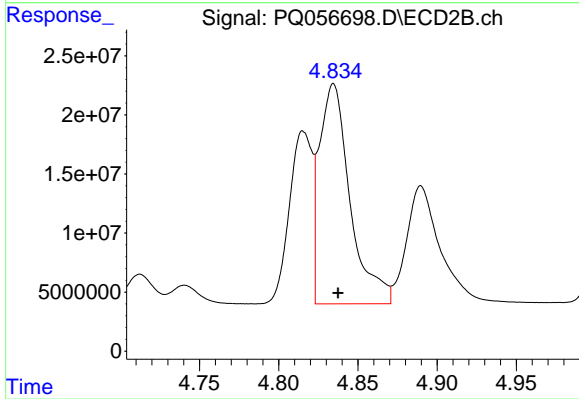
#3 AR-1016-1

R.T.: 4.816 min
 Delta R.T.: -0.003 min
 Response: 146843306
 Conc: 386.51 ng/ml



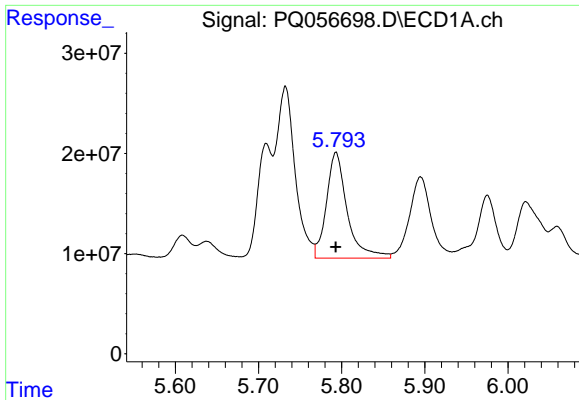
#4 AR-1016-2

R.T.: 5.732 min
 Delta R.T.: 0.001 min
 Response: 269195045
 Conc: 405.30 ng/ml



#4 AR-1016-2

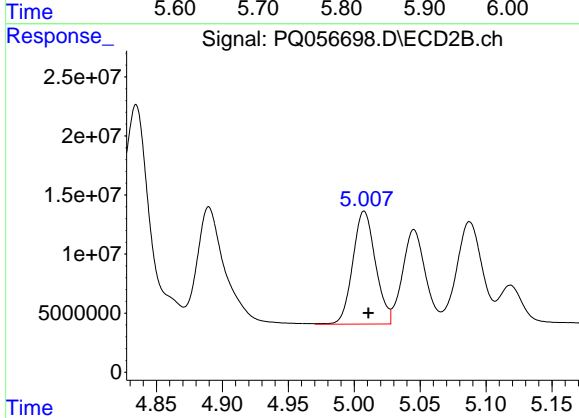
R.T.: 4.835 min
 Delta R.T.: -0.003 min
 Response: 251588971
 Conc: 388.55 ng/ml



#5 AR-1016-3

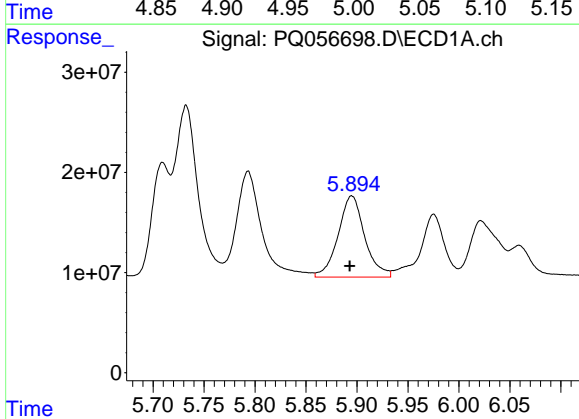
R.T.: 5.793 min
 Delta R.T.: 0.000 min
 Response: 183141886
 Conc: 417.78 ng/ml

Instrument :
 ECD_Q
 ClientSampleId :



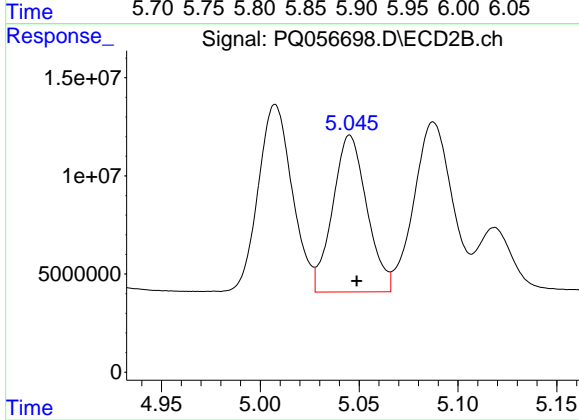
#5 AR-1016-3

R.T.: 5.008 min
 Delta R.T.: -0.003 min
 Response: 114849264
 Conc: 387.93 ng/ml



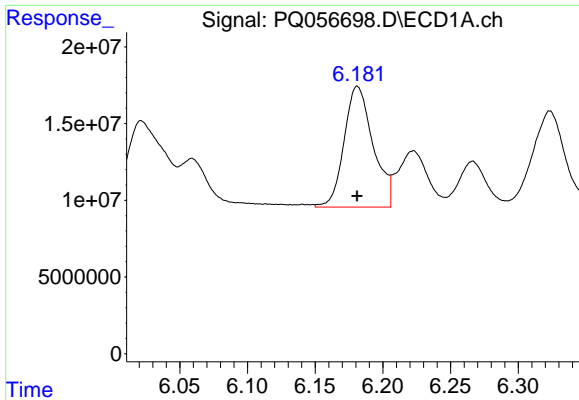
#6 AR-1016-4

R.T.: 5.895 min
 Delta R.T.: 0.002 min
 Response: 146826244
 Conc: 418.11 ng/ml



#6 AR-1016-4

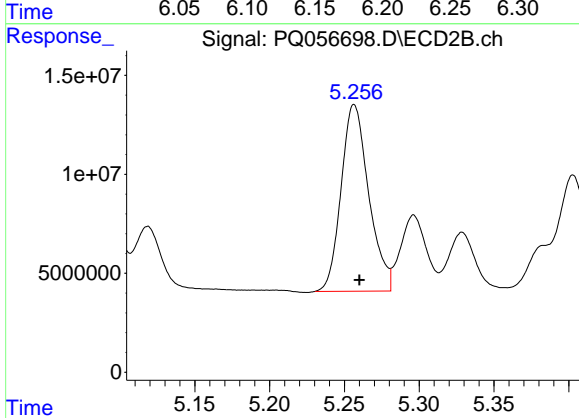
R.T.: 5.045 min
 Delta R.T.: -0.004 min
 Response: 96020893
 Conc: 393.33 ng/ml



#7 AR-1016-5

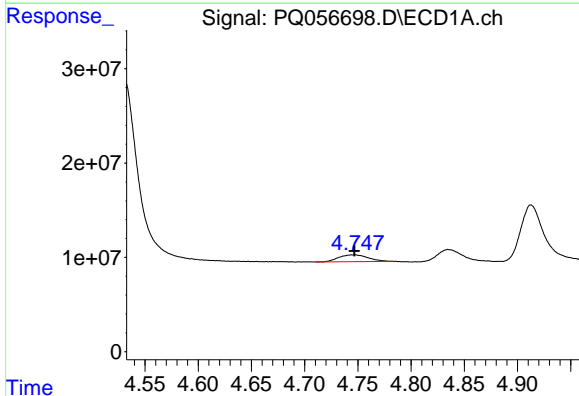
R.T.: 6.181 min
 Delta R.T.: 0.000 min
 Response: 117457705
 Conc: 412.94 ng/ml

Instrument :
 ECD_Q
 ClientSampleId :



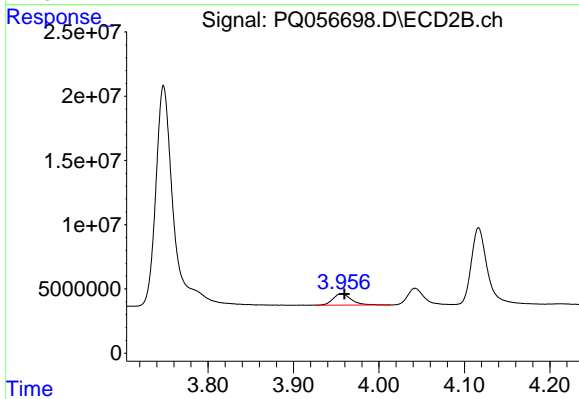
#7 AR-1016-5

R.T.: 5.257 min
 Delta R.T.: -0.004 min
 Response: 121192187
 Conc: 390.00 ng/ml



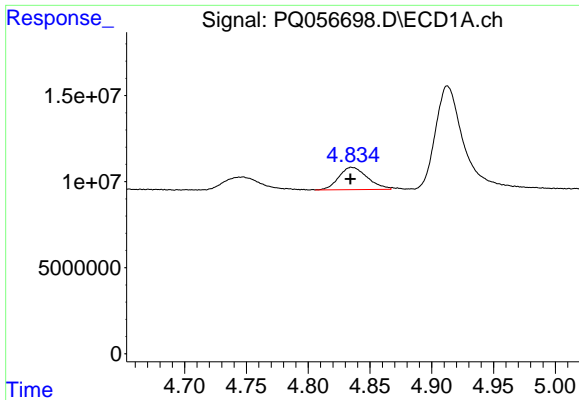
#8 AR-1221-1

R.T.: 4.748 min
 Delta R.T.: 0.001 min
 Response: 13782298
 Conc: 96.93 ng/ml



#8 AR-1221-1

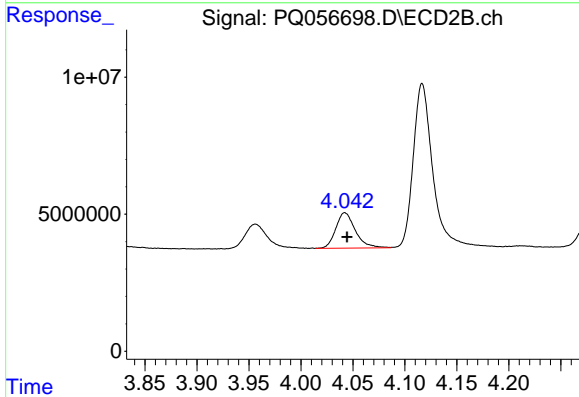
R.T.: 3.956 min
 Delta R.T.: -0.004 min
 Response: 13297605
 Conc: 104.90 ng/ml



#9 AR-1221-2

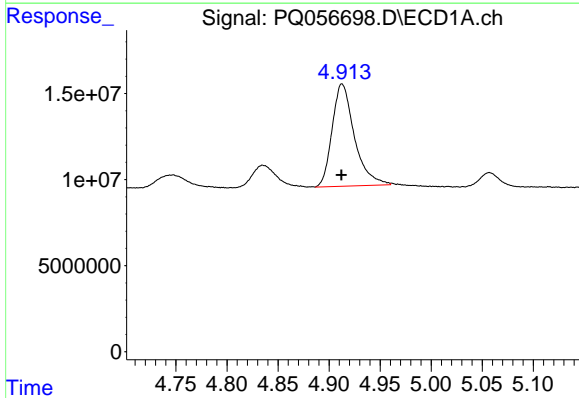
R.T.: 4.835 min
 Delta R.T.: 0.000 min
 Response: 20861158
 Conc: 203.13 ng/ml

Instrument :
 ECD_Q
 ClientSampleId :



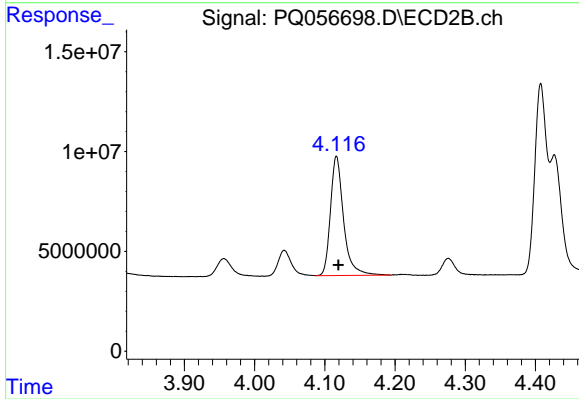
#9 AR-1221-2

R.T.: 4.042 min
 Delta R.T.: -0.002 min
 Response: 16938096
 Conc: 195.25 ng/ml



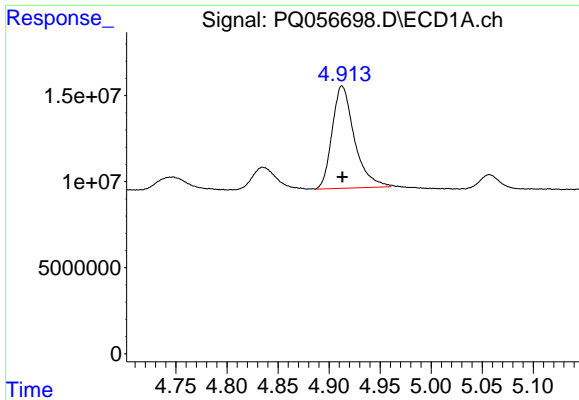
#10 AR-1221-3

R.T.: 4.913 min
 Delta R.T.: 0.000 min
 Response: 90073163
 Conc: 252.03 ng/ml



#10 AR-1221-3

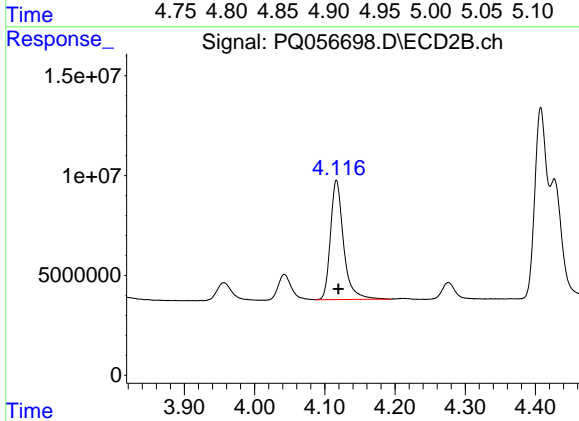
R.T.: 4.117 min
 Delta R.T.: -0.003 min
 Response: 77766653
 Conc: 250.26 ng/ml



#11 AR-1232-1

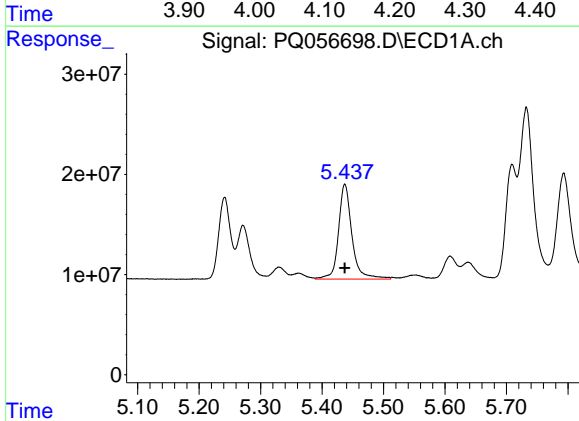
R.T.: 4.913 min
 Delta R.T.: 0.000 min
 Response: 90073163
 Conc: 314.14 ng/ml

Instrument :
 ECD_Q
 ClientSampleId :



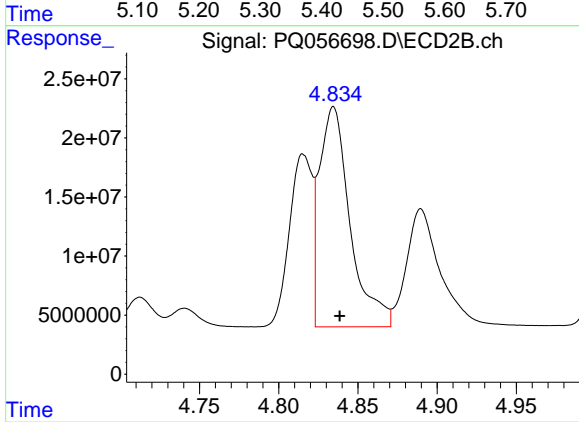
#11 AR-1232-1

R.T.: 4.117 min
 Delta R.T.: -0.003 min
 Response: 77766653
 Conc: 308.34 ng/ml



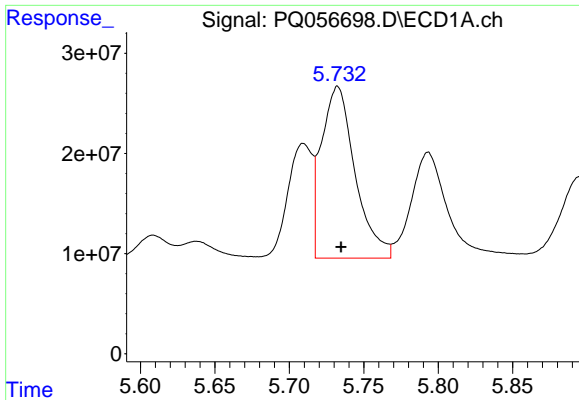
#12 AR-1232-2

R.T.: 5.437 min
 Delta R.T.: 0.000 min
 Response: 144191652
 Conc: 912.01 ng/ml



#12 AR-1232-2

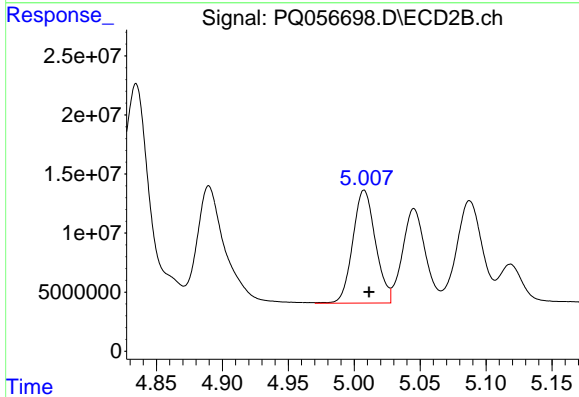
R.T.: 4.835 min
 Delta R.T.: -0.004 min
 Response: 251588971
 Conc: 927.61 ng/ml



#13 AR-1232-3

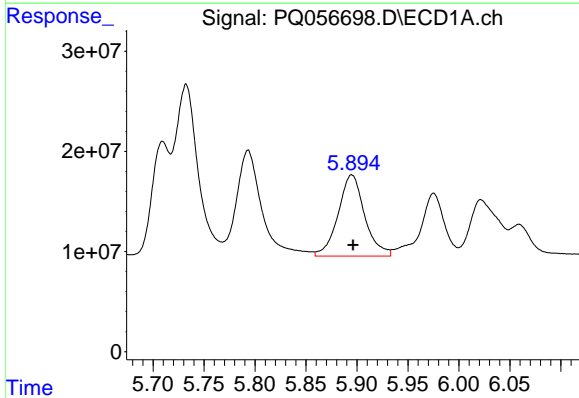
R.T.: 5.732 min
 Delta R.T.: -0.002 min
 Response: 269195045
 Conc: 939.10 ng/ml

Instrument :
 ECD_Q
 ClientSampleId :



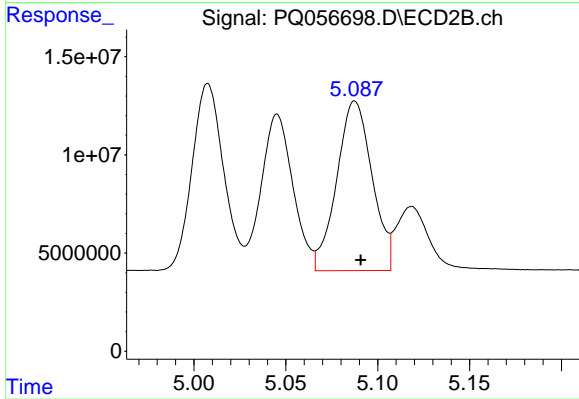
#13 AR-1232-3

R.T.: 5.008 min
 Delta R.T.: -0.004 min
 Response: 114849264
 Conc: 960.41 ng/ml



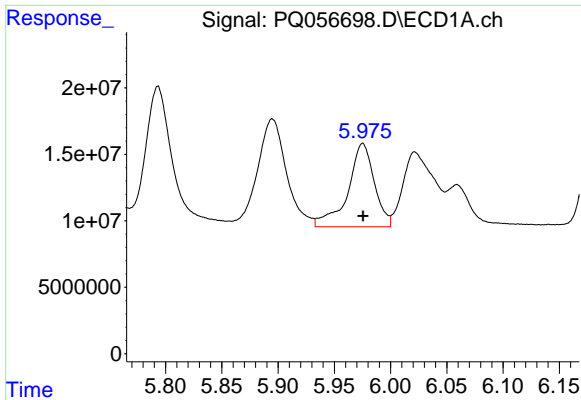
#14 AR-1232-4

R.T.: 5.895 min
 Delta R.T.: -0.002 min
 Response: 146826244
 Conc: 1010.69 ng/ml



#14 AR-1232-4

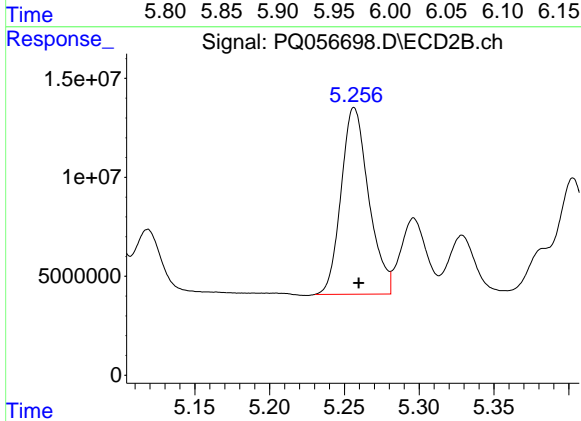
R.T.: 5.088 min
 Delta R.T.: -0.003 min
 Response: 115827479
 Conc: 1050.88 ng/ml



#15 AR-1232-5

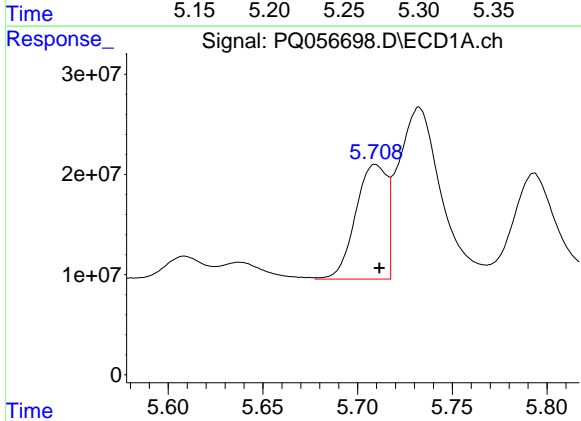
R.T.: 5.975 min
 Delta R.T.: 0.000 min
 Response: 102852958
 Conc: 1144.36 ng/ml

Instrument :
 ECD_Q
 ClientSampleId :



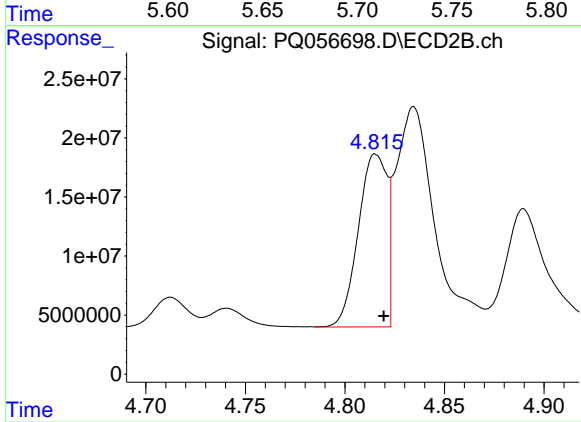
#15 AR-1232-5

R.T.: 5.257 min
 Delta R.T.: -0.003 min
 Response: 121192187
 Conc: 973.82 ng/ml



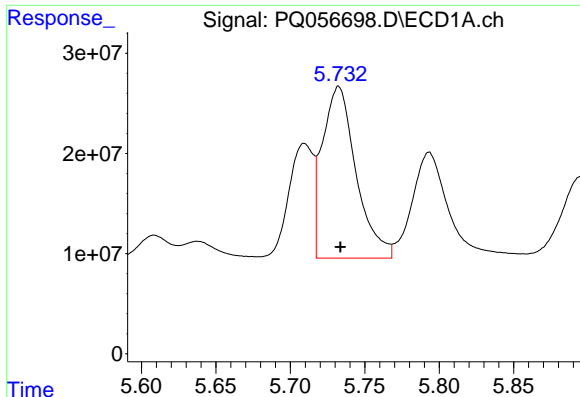
#16 AR-1242-1

R.T.: 5.709 min
 Delta R.T.: -0.002 min
 Response: 131867747
 Conc: 534.42 ng/ml



#16 AR-1242-1

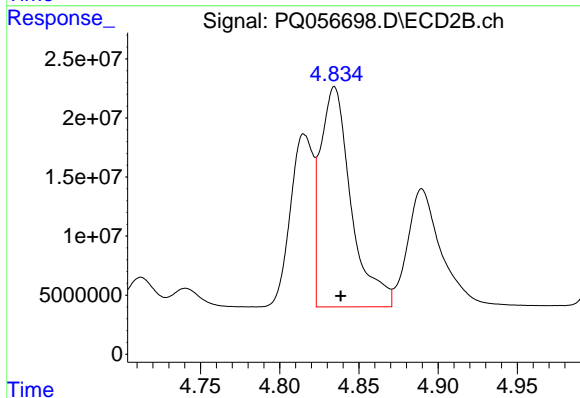
R.T.: 4.816 min
 Delta R.T.: -0.004 min
 Response: 146843306
 Conc: 496.19 ng/ml



#17 AR-1242-2

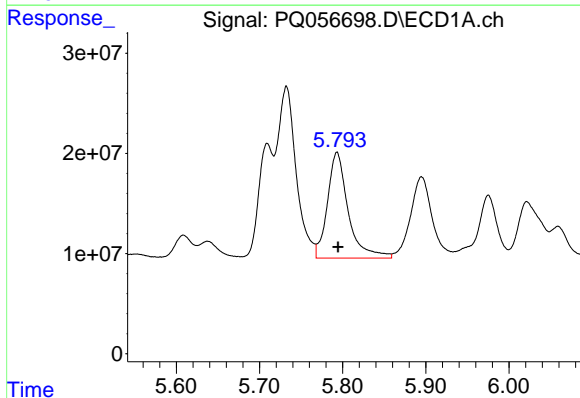
R.T.: 5.732 min
 Delta R.T.: -0.001 min
 Response: 269195045
 Conc: 505.07 ng/ml

Instrument :
 ECD_Q
 ClientSampleId :



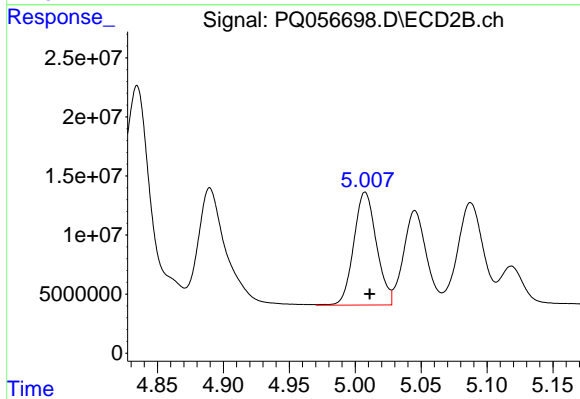
#17 AR-1242-2

R.T.: 4.835 min
 Delta R.T.: -0.004 min
 Response: 251588971
 Conc: 492.74 ng/ml



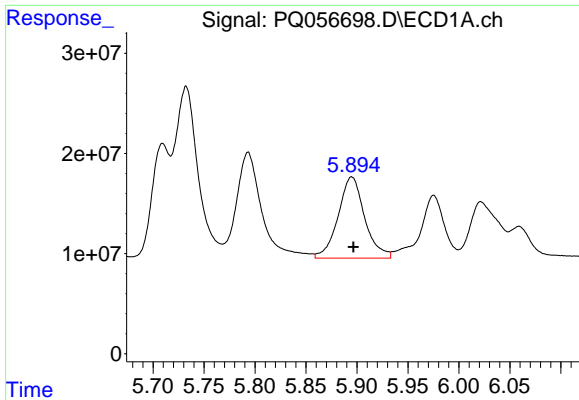
#18 AR-1242-3

R.T.: 5.793 min
 Delta R.T.: -0.001 min
 Response: 183141886
 Conc: 514.74 ng/ml



#18 AR-1242-3

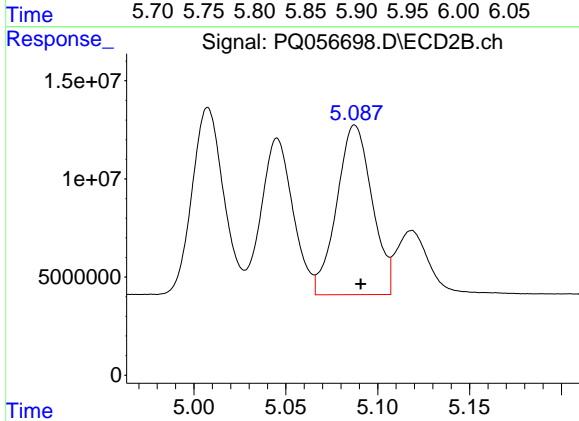
R.T.: 5.008 min
 Delta R.T.: -0.003 min
 Response: 114849264
 Conc: 495.84 ng/ml



#19 AR-1242-4

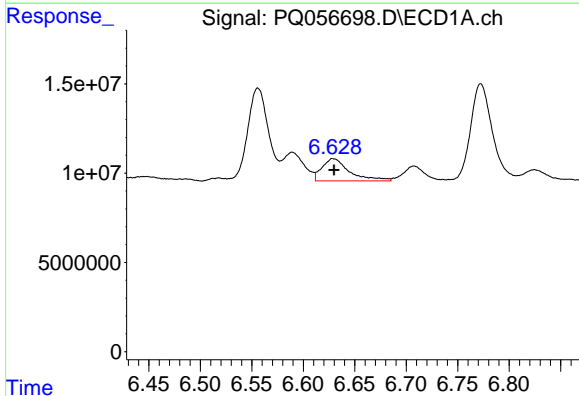
R.T.: 5.895 min
 Delta R.T.: -0.002 min
 Response: 146826244
 Conc: 526.39 ng/ml

Instrument :
 ECD_Q
 ClientSampleId :



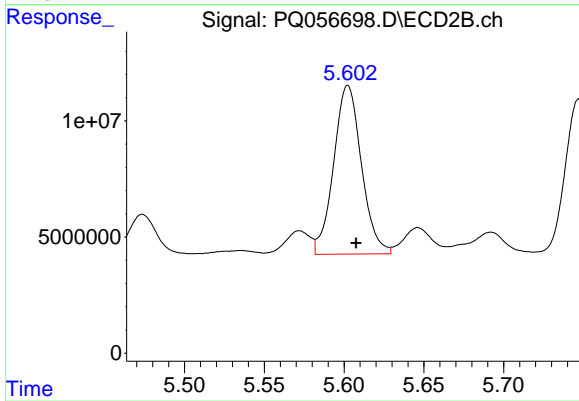
#19 AR-1242-4

R.T.: 5.088 min
 Delta R.T.: -0.003 min
 Response: 115827479
 Conc: 499.48 ng/ml



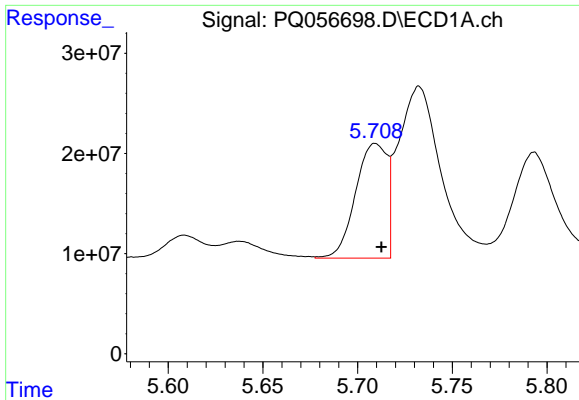
#20 AR-1242-5

R.T.: 6.629 min
 Delta R.T.: -0.001 min
 Response: 23333521
 Conc: 80.29 ng/ml



#20 AR-1242-5

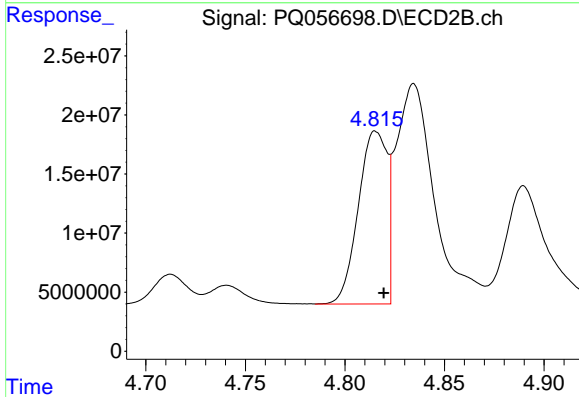
R.T.: 5.602 min
 Delta R.T.: -0.005 min
 Response: 88027918
 Conc: 294.74 ng/ml



#21 AR-1248-1

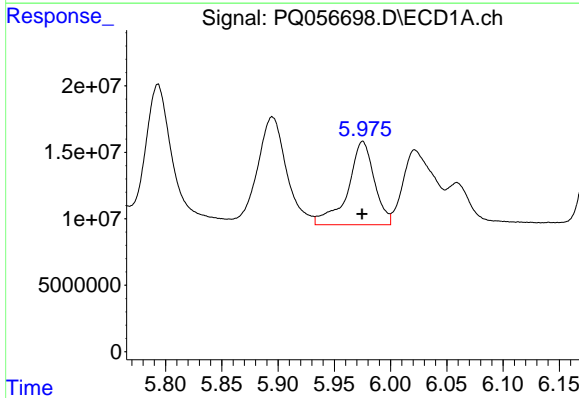
R.T.: 5.709 min
 Delta R.T.: -0.003 min
 Response: 131867747
 Conc: 759.71 ng/ml

Instrument :
 ECD_Q
 ClientSampleId :



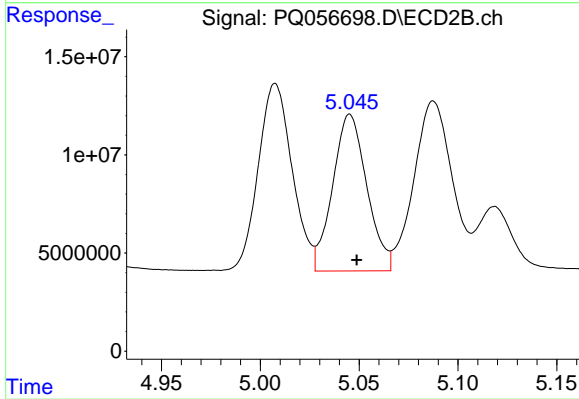
#21 AR-1248-1

R.T.: 4.816 min
 Delta R.T.: -0.004 min
 Response: 146843306
 Conc: 686.81 ng/ml



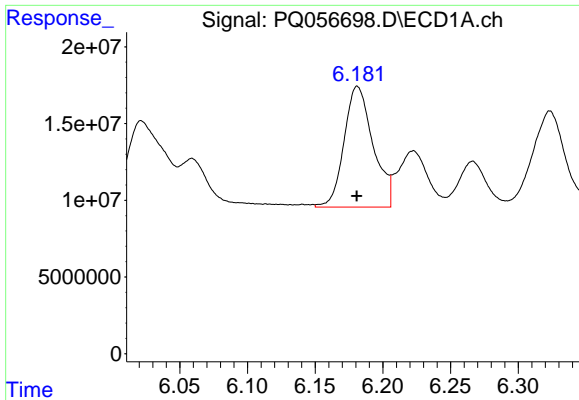
#22 AR-1248-2

R.T.: 5.975 min
 Delta R.T.: 0.000 min
 Response: 102852958
 Conc: 349.45 ng/ml



#22 AR-1248-2

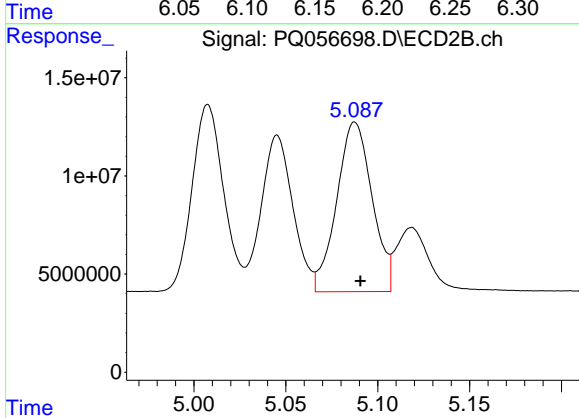
R.T.: 5.045 min
 Delta R.T.: -0.003 min
 Response: 96020893
 Conc: 302.29 ng/ml



#23 AR-1248-3

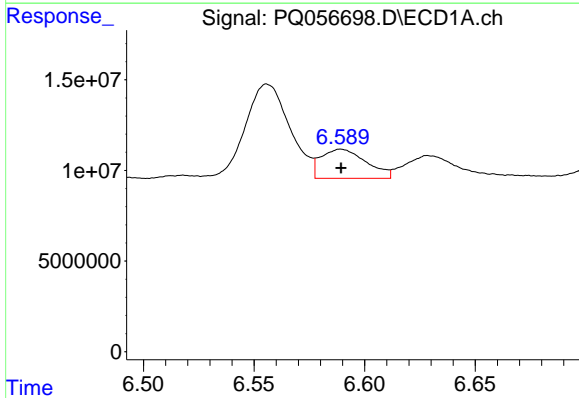
R.T.: 6.181 min
 Delta R.T.: 0.000 min
 Response: 117457705
 Conc: 323.42 ng/ml

Instrument :
 ECD_Q
 ClientSampleId :



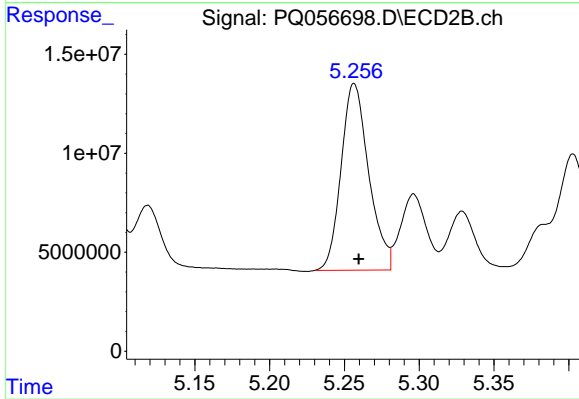
#23 AR-1248-3

R.T.: 5.088 min
 Delta R.T.: -0.003 min
 Response: 115827479
 Conc: 346.26 ng/ml



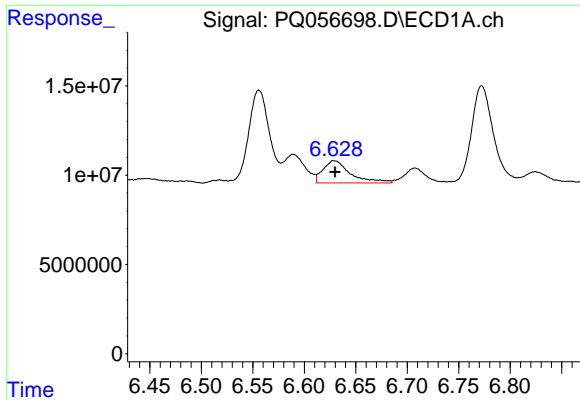
#24 AR-1248-4

R.T.: 6.589 min
 Delta R.T.: 0.000 min
 Response: 22914957
 Conc: 55.83 ng/ml



#24 AR-1248-4

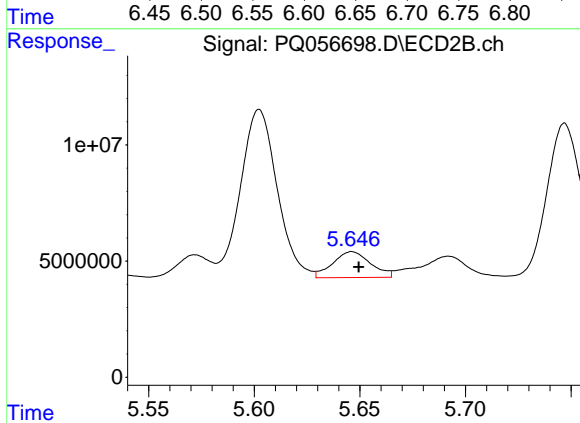
R.T.: 5.257 min
 Delta R.T.: -0.003 min
 Response: 121192187
 Conc: 304.83 ng/ml



#25 AR-1248-5

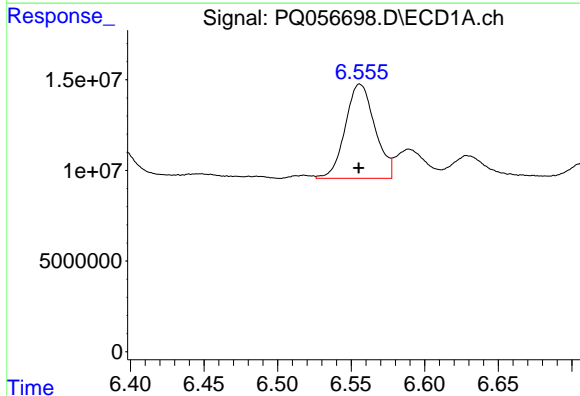
R.T.: 6.629 min
 Delta R.T.: 0.000 min
 Response: 23333521
 Conc: 49.44 ng/ml

Instrument :
 ECD_Q
 ClientSampleId :



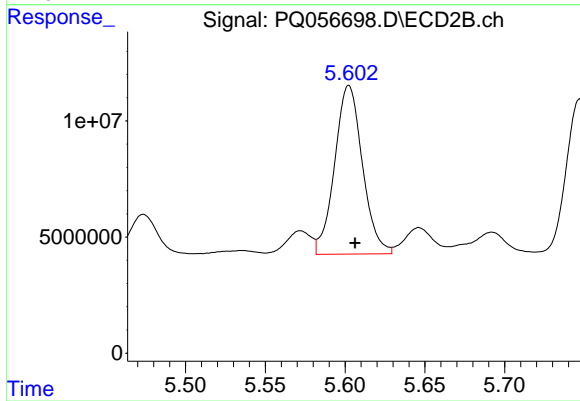
#25 AR-1248-5

R.T.: 5.646 min
 Delta R.T.: -0.003 min
 Response: 13988841
 Conc: 34.25 ng/ml



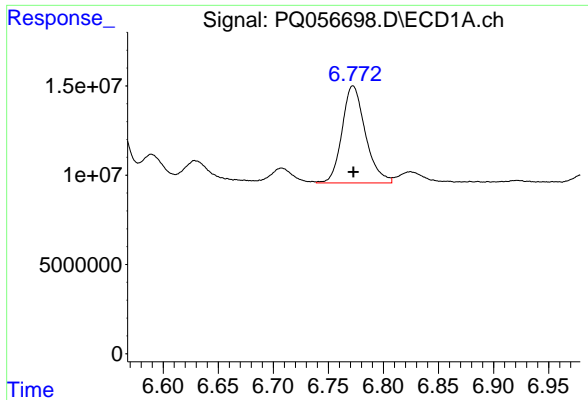
#26 AR-1254-1

R.T.: 6.556 min
 Delta R.T.: 0.000 min
 Response: 72938805
 Conc: 178.22 ng/ml



#26 AR-1254-1

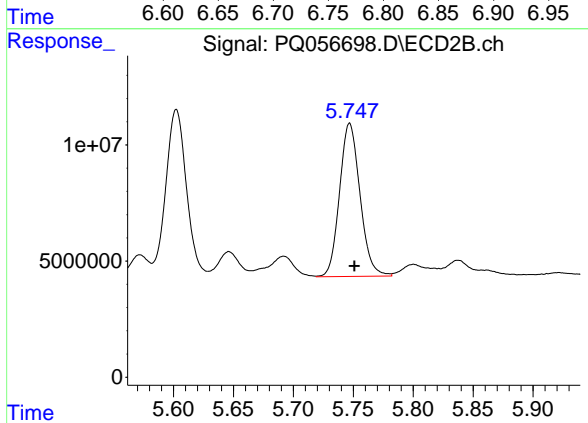
R.T.: 5.602 min
 Delta R.T.: -0.004 min
 Response: 88027918
 Conc: 131.13 ng/ml



#27 AR-1254-2

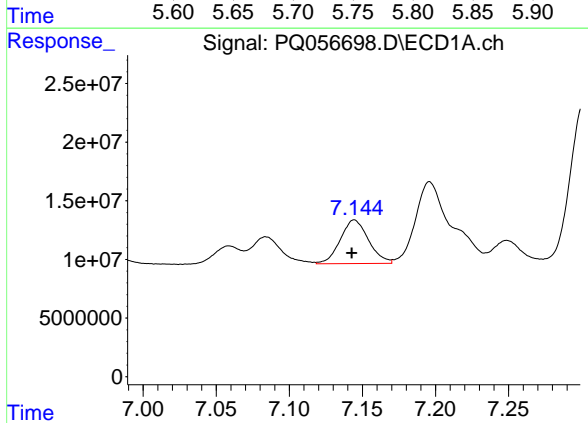
R.T.: 6.772 min
 Delta R.T.: 0.000 min
 Response: 80273025
 Conc: 123.16 ng/ml

Instrument :
 ECD_Q
 ClientSampleId :



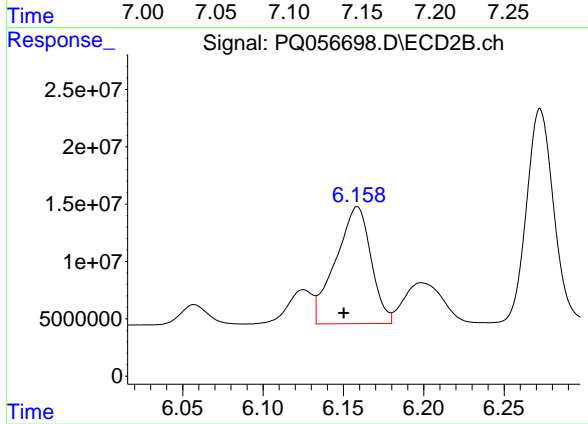
#27 AR-1254-2

R.T.: 5.747 min
 Delta R.T.: -0.004 min
 Response: 78267201
 Conc: 136.89 ng/ml



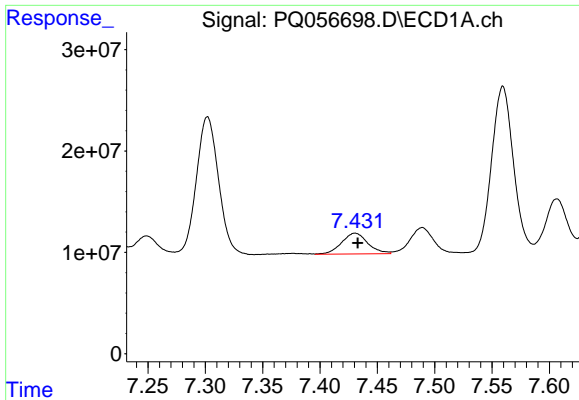
#28 AR-1254-3

R.T.: 7.144 min
 Delta R.T.: 0.002 min
 Response: 50147895
 Conc: 62.97 ng/ml



#28 AR-1254-3

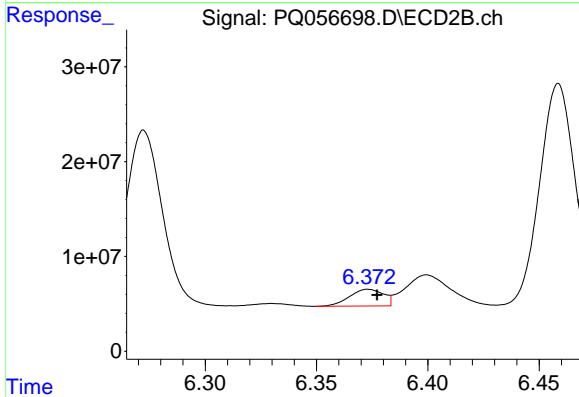
R.T.: 6.159 min
 Delta R.T.: 0.008 min
 Response: 155646339
 Conc: 164.47 ng/ml



#29 AR-1254-4

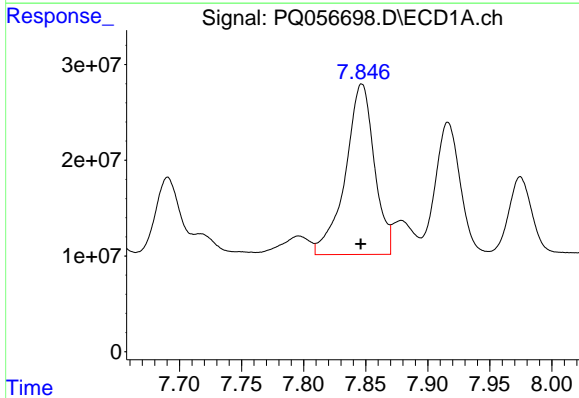
R.T.: 7.431 min
 Delta R.T.: -0.002 min
 Response: 32802785
 Conc: 62.81 ng/ml

Instrument :
 ECD_Q
 ClientSampleId :



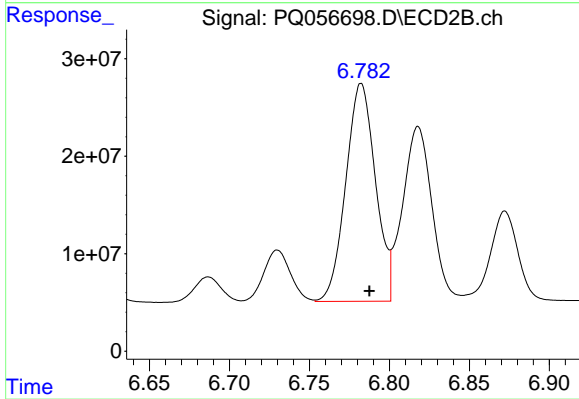
#29 AR-1254-4

R.T.: 6.373 min
 Delta R.T.: -0.004 min
 Response: 18715392
 Conc: 27.86 ng/ml



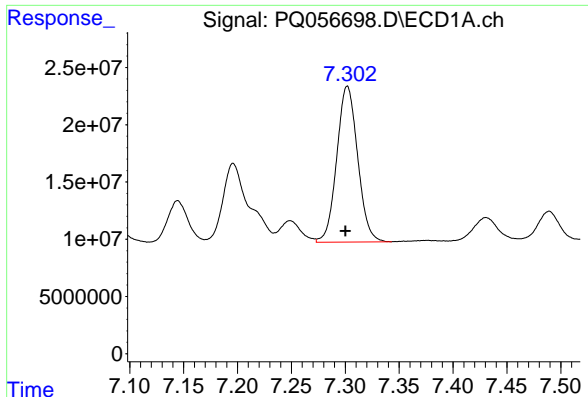
#30 AR-1254-5

R.T.: 7.847 min
 Delta R.T.: 0.000 min
 Response: 289386263
 Conc: 476.19 ng/ml



#30 AR-1254-5

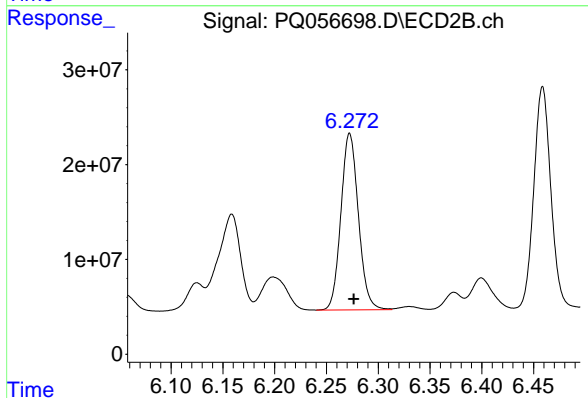
R.T.: 6.782 min
 Delta R.T.: -0.005 min
 Response: 288690887
 Conc: 353.81 ng/ml



#31 AR-1260-1

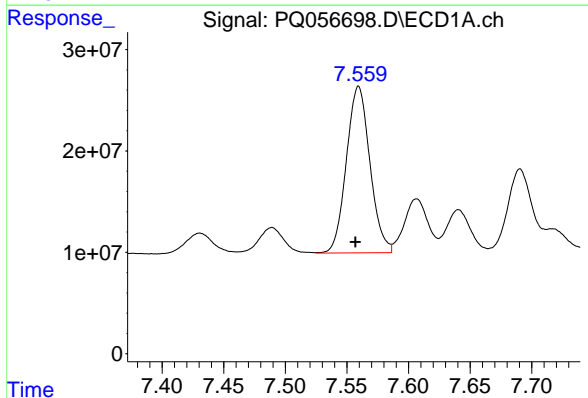
R.T.: 7.302 min
 Delta R.T.: 0.002 min
 Response: 184093953
 Conc: 396.43 ng/ml

Instrument :
 ECD_Q
 ClientSampleId :



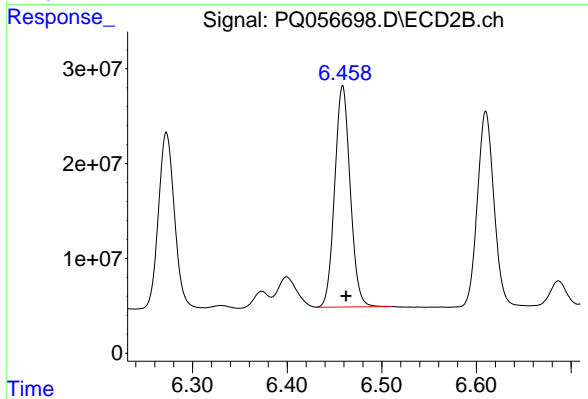
#31 AR-1260-1

R.T.: 6.272 min
 Delta R.T.: -0.004 min
 Response: 218845871
 Conc: 388.10 ng/ml



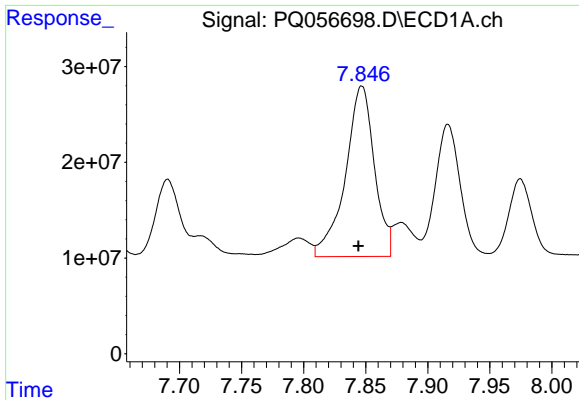
#32 AR-1260-2

R.T.: 7.559 min
 Delta R.T.: 0.003 min
 Response: 218995178
 Conc: 398.04 ng/ml



#32 AR-1260-2

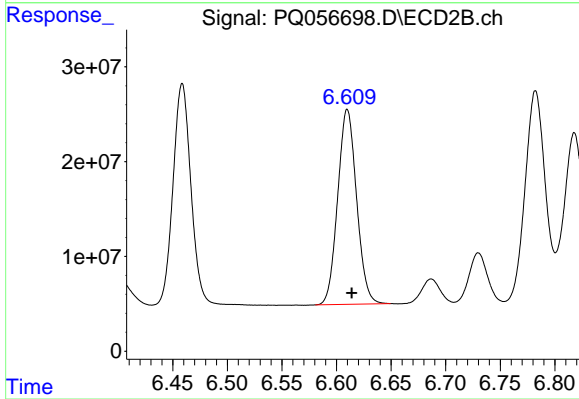
R.T.: 6.459 min
 Delta R.T.: -0.004 min
 Response: 266516001
 Conc: 389.69 ng/ml



#33 AR-1260-3

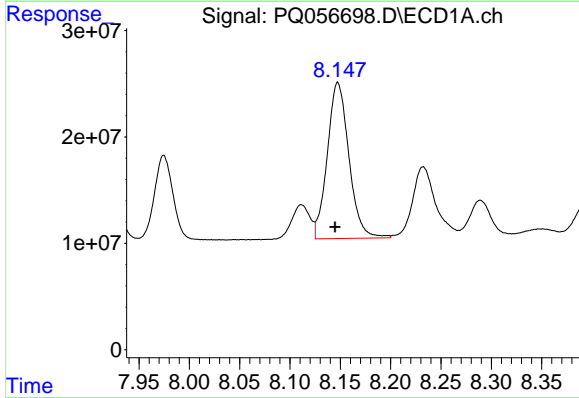
R.T.: 7.847 min
 Delta R.T.: 0.003 min
 Response: 289386263
 Conc: 408.37 ng/ml

Instrument :
 ECD_Q
 ClientSampleId :



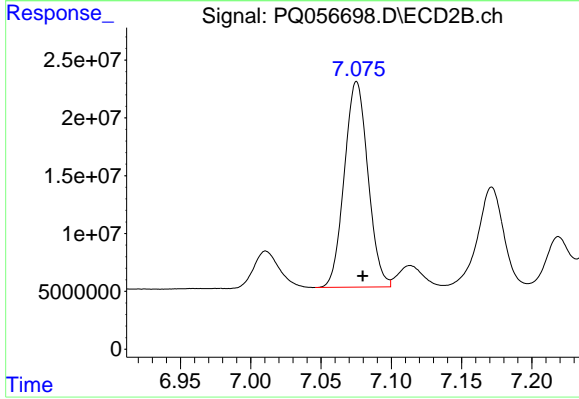
#33 AR-1260-3

R.T.: 6.610 min
 Delta R.T.: -0.004 min
 Response: 247994959
 Conc: 387.65 ng/ml



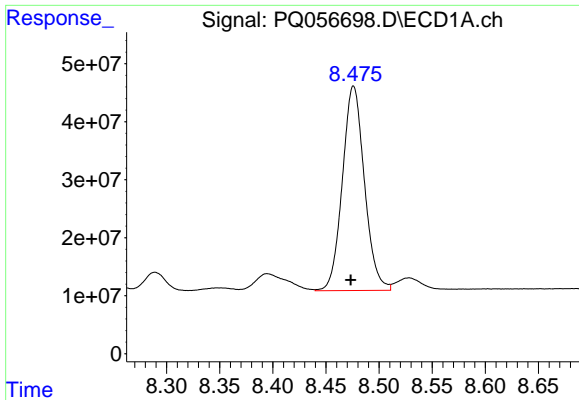
#34 AR-1260-4

R.T.: 8.147 min
 Delta R.T.: 0.003 min
 Response: 219152755
 Conc: 406.68 ng/ml



#34 AR-1260-4

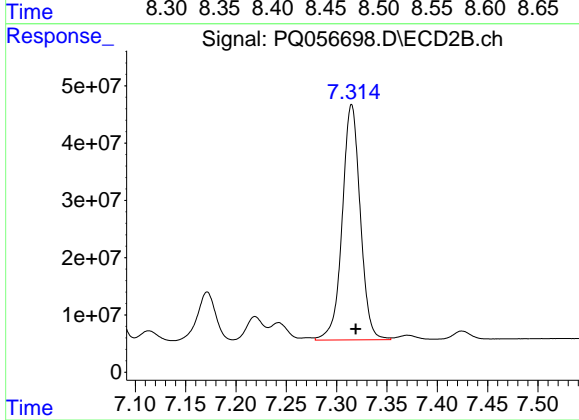
R.T.: 7.075 min
 Delta R.T.: -0.004 min
 Response: 207849163
 Conc: 387.65 ng/ml



#35 AR-1260-5

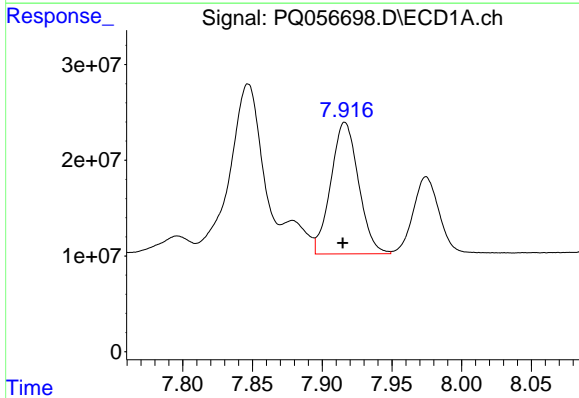
R.T.: 8.476 min
 Delta R.T.: 0.003 min
 Response: 509352703
 Conc: 439.05 ng/ml

Instrument :
 ECD_Q
 ClientSampleId :



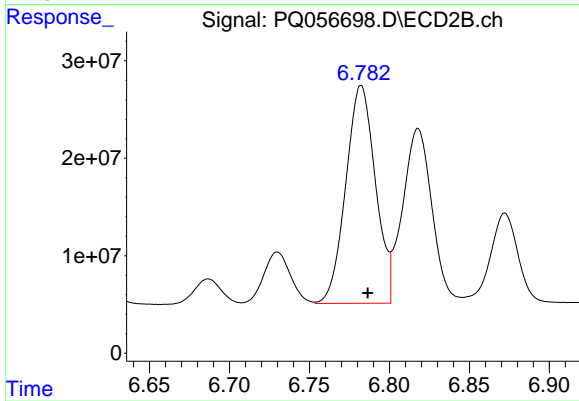
#35 AR-1260-5

R.T.: 7.315 min
 Delta R.T.: -0.004 min
 Response: 512213707
 Conc: 385.67 ng/ml



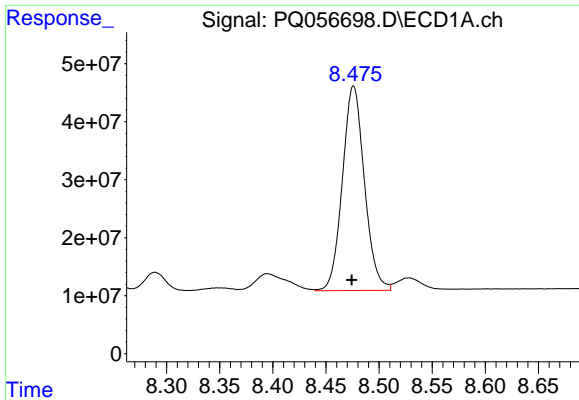
#36 AR-1262-1

R.T.: 7.916 min
 Delta R.T.: 0.002 min
 Response: 190489181
 Conc: 269.03 ng/ml



#36 AR-1262-1

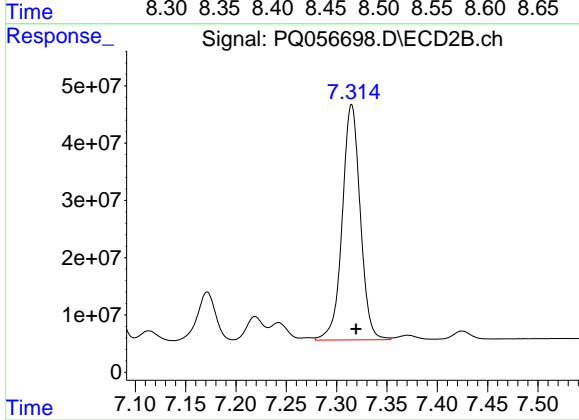
R.T.: 6.782 min
 Delta R.T.: -0.004 min
 Response: 288690887
 Conc: 684.41 ng/ml



#37 AR-1262-2

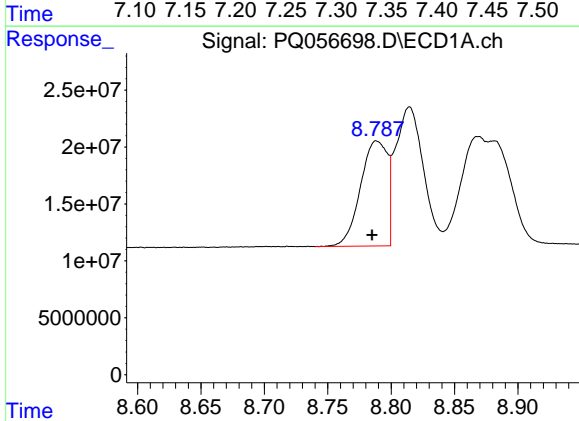
R.T.: 8.476 min
 Delta R.T.: 0.002 min
 Response: 509352703
 Conc: 343.40 ng/ml

Instrument :
 ECD_Q
 ClientSampleId :



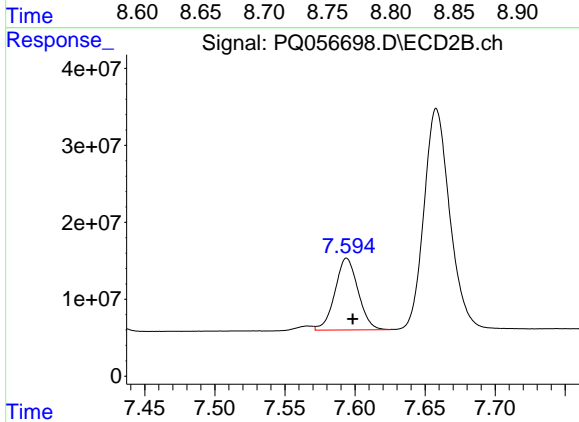
#37 AR-1262-2

R.T.: 7.315 min
 Delta R.T.: -0.004 min
 Response: 512213707
 Conc: 319.80 ng/ml



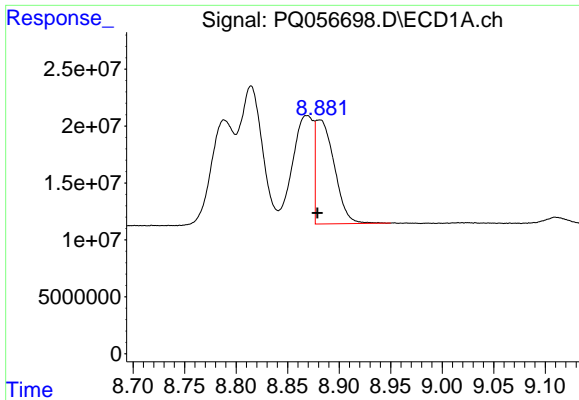
#38 AR-1262-3

R.T.: 8.789 min
 Delta R.T.: 0.003 min
 Response: 136380944
 Conc: 197.64 ng/ml



#38 AR-1262-3

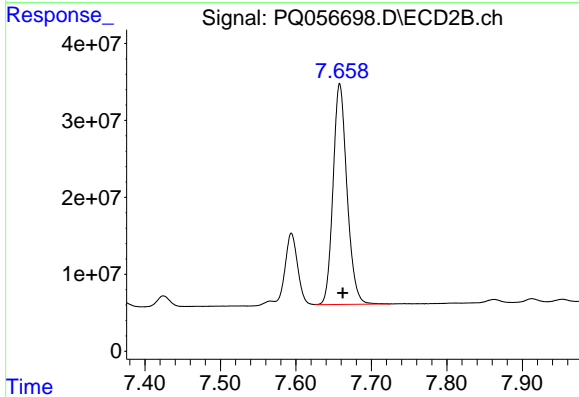
R.T.: 7.594 min
 Delta R.T.: -0.004 min
 Response: 107413239
 Conc: 180.20 ng/ml



#39 AR-1262-4

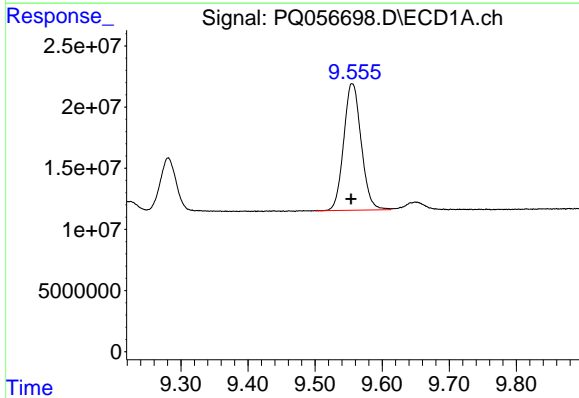
R.T.: 8.881 min
 Delta R.T.: 0.002 min
 Response: 115426371
 Conc: 170.53 ng/ml

Instrument :
 ECD_Q
 ClientSampleId :



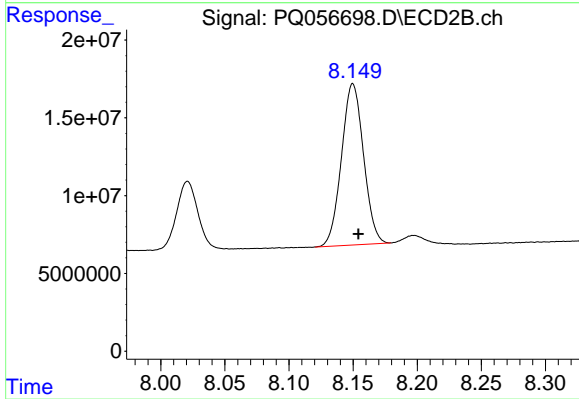
#39 AR-1262-4

R.T.: 7.658 min
 Delta R.T.: -0.004 min
 Response: 368447195
 Conc: 319.05 ng/ml



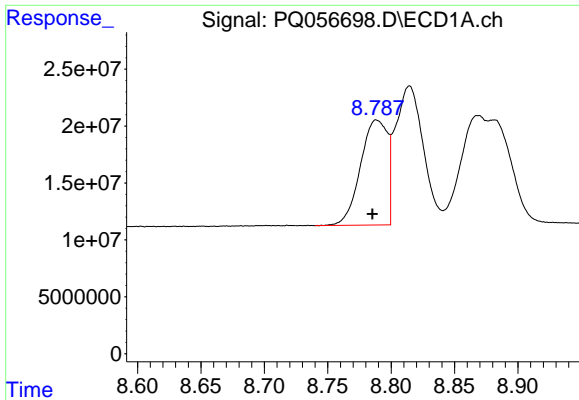
#40 AR-1262-5

R.T.: 9.555 min
 Delta R.T.: 0.002 min
 Response: 187294110
 Conc: 294.79 ng/ml



#40 AR-1262-5

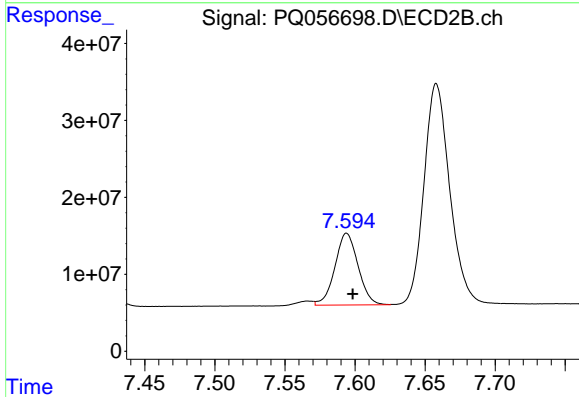
R.T.: 8.150 min
 Delta R.T.: -0.004 min
 Response: 124062678
 Conc: 249.78 ng/ml



#41 AR-1268-1

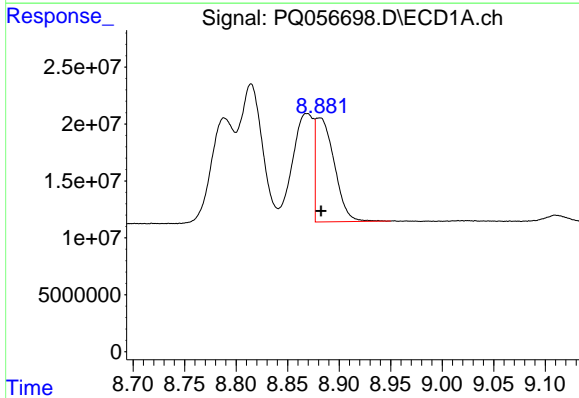
R.T.: 8.789 min
 Delta R.T.: 0.003 min
 Response: 136380944
 Conc: 73.58 ng/ml

Instrument :
 ECD_Q
 ClientSampleId :



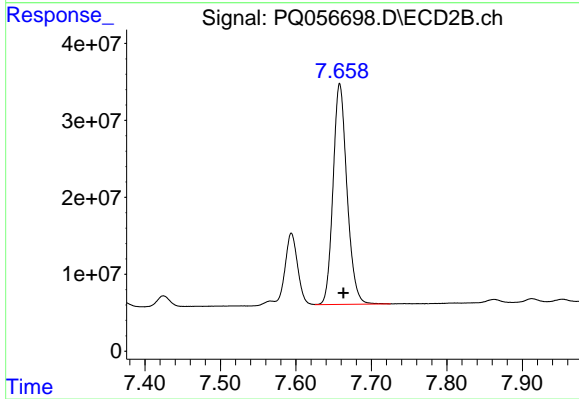
#41 AR-1268-1

R.T.: 7.594 min
 Delta R.T.: -0.004 min
 Response: 107413239
 Conc: 59.14 ng/ml



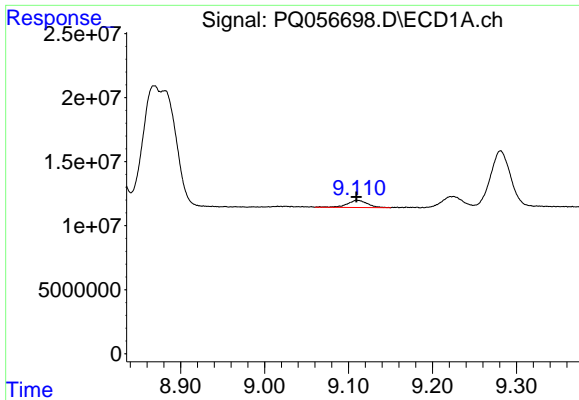
#42 AR-1268-2

R.T.: 8.881 min
 Delta R.T.: -0.002 min
 Response: 115426371
 Conc: 57.68 ng/ml



#42 AR-1268-2

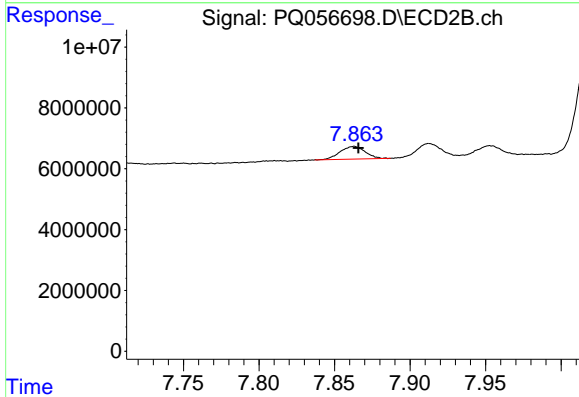
R.T.: 7.658 min
 Delta R.T.: -0.005 min
 Response: 368447195
 Conc: 222.66 ng/ml



#43 AR-1268-3

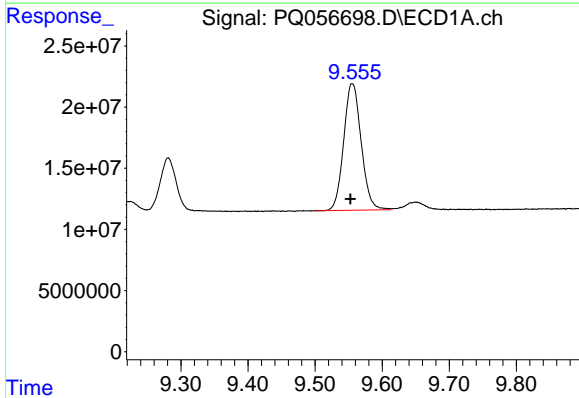
R.T.: 9.110 min
 Delta R.T.: 0.000 min
 Response: 9640770
 Conc: 5.50 ng/ml

Instrument :
 ECD_Q
 ClientSampleId :



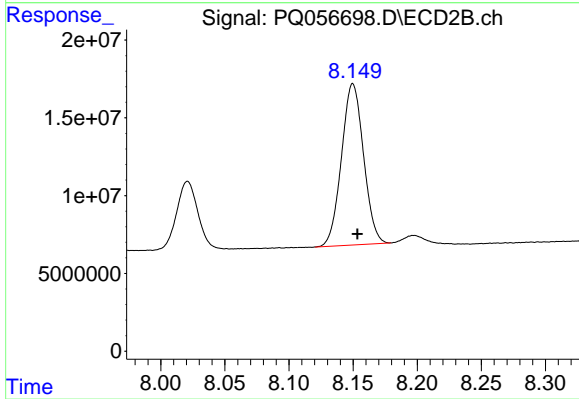
#43 AR-1268-3

R.T.: 7.863 min
 Delta R.T.: -0.003 min
 Response: 4799913
 Conc: 3.50 ng/ml



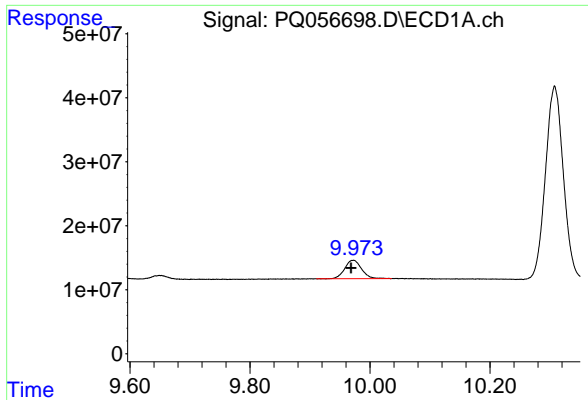
#44 AR-1268-4

R.T.: 9.555 min
 Delta R.T.: 0.002 min
 Response: 187294110
 Conc: 267.35 ng/ml



#44 AR-1268-4

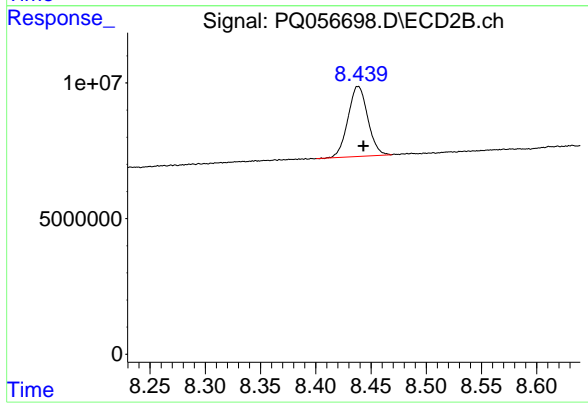
R.T.: 8.150 min
 Delta R.T.: -0.004 min
 Response: 124062678
 Conc: 223.20 ng/ml



#45 AR-1268-5

R.T.: 9.972 min
Delta R.T.: 0.004 min
Response: 56525146
Conc: 9.29 ng/ml

Instrument :
ECD_Q
ClientSampleId :



#45 AR-1268-5

R.T.: 8.438 min
Delta R.T.: -0.005 min
Response: 32114139
Conc: 7.39 ng/ml