

Data Path : Z:\pestpcbsrv\HPCHEM1\ECD_R\Data\PR031824\
 Data File : PR065941.D
 Signal(s) : Signal #1: ECD1A.ch Signal #2: ECD2B.ch
 Acq On : 18 Mar 2024 17:30
 Operator : AJ\MA
 Sample : P1787-06
 Misc :
 ALS Vial : 14 Sample Multiplier: 1

Instrument :
 ECD_Q
 ClientSampleId :
 E0776

Integration File signal 1: autoint1.e
 Integration File signal 2: autoint2.e
 Quant Time: Mar 19 01:28:35 2024
 Quant Method : Z:\pestpcbsrv\HPCHEM1\ECD_R\Method\PR030524CLP.M
 Quant Title : GC EXTRACTABLES
 QLast Update : Wed Mar 06 04:38:56 2024
 Response via : Initial Calibration
 Integrator: ChemStation

Volume Inj. : 1 µl
 Signal #1 Phase : ZB MR1 Signal #2 Phase: ZB MR2
 Signal #1 Info : 30Mx0.32mmx 0.5µm Signal #2 Info : 30M x 0.32mm x 0.25µm

Compound	RT#1	RT#2	Resp#1	Resp#2	ng/ml	ng/ml
System Monitoring Compounds						
1) SA Tetrachlo...	3.662	2.923	99716861	120.5E6	15.697	17.927
2) SA Decachlor...	9.549	8.176	54748299	94248844	35.618	34.603
Target Compounds						
3) L1 AR-1016-1	4.831f	4.034	3677262	812721	30.071	4.508 #
4) L1 AR-1016-2	0.000	4.057	0	823944	N.D.	2.926 #
5) L1 AR-1016-3	0.000	4.248	0	378995	N.D.	2.490 #
6) L1 AR-1016-4	5.066	4.276	850173	774818	7.720	5.923
7) L1 AR-1016-5	0.000	4.484	0	1397336	N.D.	8.380 #
8) L2 AR-1221-1	3.872	3.138	1756512	225589	28.382	3.224 #
9) L2 AR-1221-2	3.973	3.225	1285088	1784203	29.406	35.084
10) L2 AR-1221-3	0.000	3.315	0	485585	N.D.	2.935 #
11) L3 AR-1232-1	0.000	3.315	0	485585	N.D.	3.478 #
12) L3 AR-1232-2	4.591	4.057	2985889	823944	45.258	6.467 #
13) L3 AR-1232-3	0.000	4.248	0	378995	N.D.	5.558 #
14) L3 AR-1232-4	5.066	4.326	850173	212354	17.538	3.369 #
15) L3 AR-1232-5	5.227f	4.484	393904	1397336	10.104	20.307 #
16) L4 AR-1242-1	4.831f	4.034	3677262	812721	35.771	5.182 #
17) L4 AR-1242-2	0.000	4.057	0	823944	N.D.	3.543 #
18) L4 AR-1242-3	0.000	4.248	0	378995	N.D.	2.980 #
19) L4 AR-1242-4	5.066	4.326	850173	212354	9.475	1.644 #
20) L4 AR-1242-5	5.849	4.868	438171	678822	5.558	4.650
21) L5 AR-1248-1	4.831f	4.034	3677262	812721	46.626	6.711 #
22) L5 AR-1248-2	5.227f	4.276	393904	774818	2.881	4.128 #
23) L5 AR-1248-3	0.000	4.326	0	212354	N.D.	1.119 #
24) L5 AR-1248-4	5.849	4.484	438171	1397336	3.434	6.131 #
25) L5 AR-1248-5	5.849	4.929	438171	347996	3.213	1.835 #
26) L6 AR-1254-1	5.768	4.868	364931	678822	2.166	2.054
27) L6 AR-1254-2	6.058	5.021	2309594	598120	9.595	2.062 #
28) L6 AR-1254-3	6.427	5.452	538007	974885	2.377	2.183
29) L6 AR-1254-4	6.766f	5.690	866131	1417264	6.911	6.273
30) L6 AR-1254-5	7.200	6.145	1571245	3180621	10.176	8.342
31) L7 AR-1260-1	6.632f	5.594	467780	110722	2.307	0.337 #
32) L7 AR-1260-2	6.861	5.819	1129551	509947	5.777	1.411 #
33) L7 AR-1260-3	7.200f	5.967	1571245	570857	9.613	1.604 #
34) L7 AR-1260-4	7.529	6.501f	1963402	2122605	11.478	7.174 #
35) L7 AR-1260-5	7.838	6.721	1368237	159337	5.208	0.266 #
36) L8 AR-1262-1	7.200f	6.183	1571245	346248	7.283	0.815 #
37) L8 AR-1262-2	7.838	6.721	1368237	159337	4.747	0.236 #
38) L8 AR-1262-3	8.168	7.096	73603	178274	0.358	0.362
39) L8 AR-1262-4	8.248	7.096	85483	178274	0.511	0.362 #
40) L8 AR-1262-5	8.802f	7.672	270105	680995	3.028	3.247
41) L9 AR-1268-1	8.168	7.041	73603	350969	0.191	0.454 #

Data Path : Z:\pestpcbsrv\HPCHEM1\ECD_R\Data\PR031824\
 Data File : PR065941.D
 Signal(s) : Signal #1: ECD1A.ch Signal #2: ECD2B.ch
 Acq On : 18 Mar 2024 17:30
 Operator : AJ\MA
 Sample : P1787-06
 Misc :
 ALS Vial : 14 Sample Multiplier: 1

Instrument :
 ECD_Q
 ClientSampleId :
 E0776

Integration File signal 1: autoint1.e
 Integration File signal 2: autoint2.e
 Quant Time: Mar 19 01:28:35 2024
 Quant Method : Z:\pestpcbsrv\HPCHEM1\ECD_R\Method\PR030524CLP.M
 Quant Title : GC EXTRACTABLES
 QLast Update : Wed Mar 06 04:38:56 2024
 Response via : Initial Calibration
 Integrator: ChemStation

Volume Inj. : 1 µl
 Signal #1 Phase : ZB MR1 Signal #2 Phase: ZB MR2
 Signal #1 Info : 30Mx0.32mmx 0.5µm Signal #2 Info : 30M x 0.32mm x 0.25µm

	Compound	RT#1	RT#2	Resp#1	Resp#2	ng/ml	ng/ml
42)	L9 AR-1268-2	8.248	7.096	85483	178274	0.250	0.259
43)	L9 AR-1268-3	8.455	7.321	232277	312330	0.742	0.493 #
44)	L9 AR-1268-4	8.802f	7.672	270105	680995	2.775	3.026
45)	L9 AR-1268-5	9.243	7.932	511782	803949	0.614	0.480

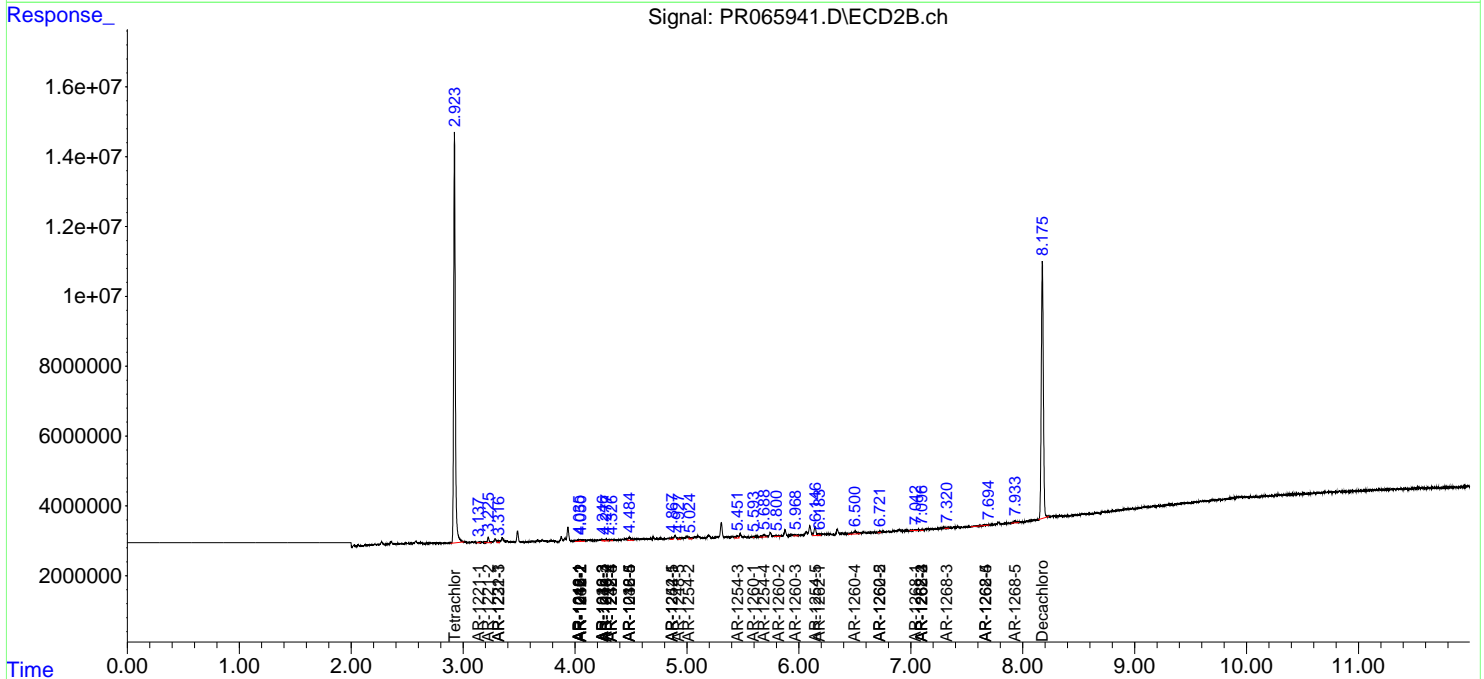
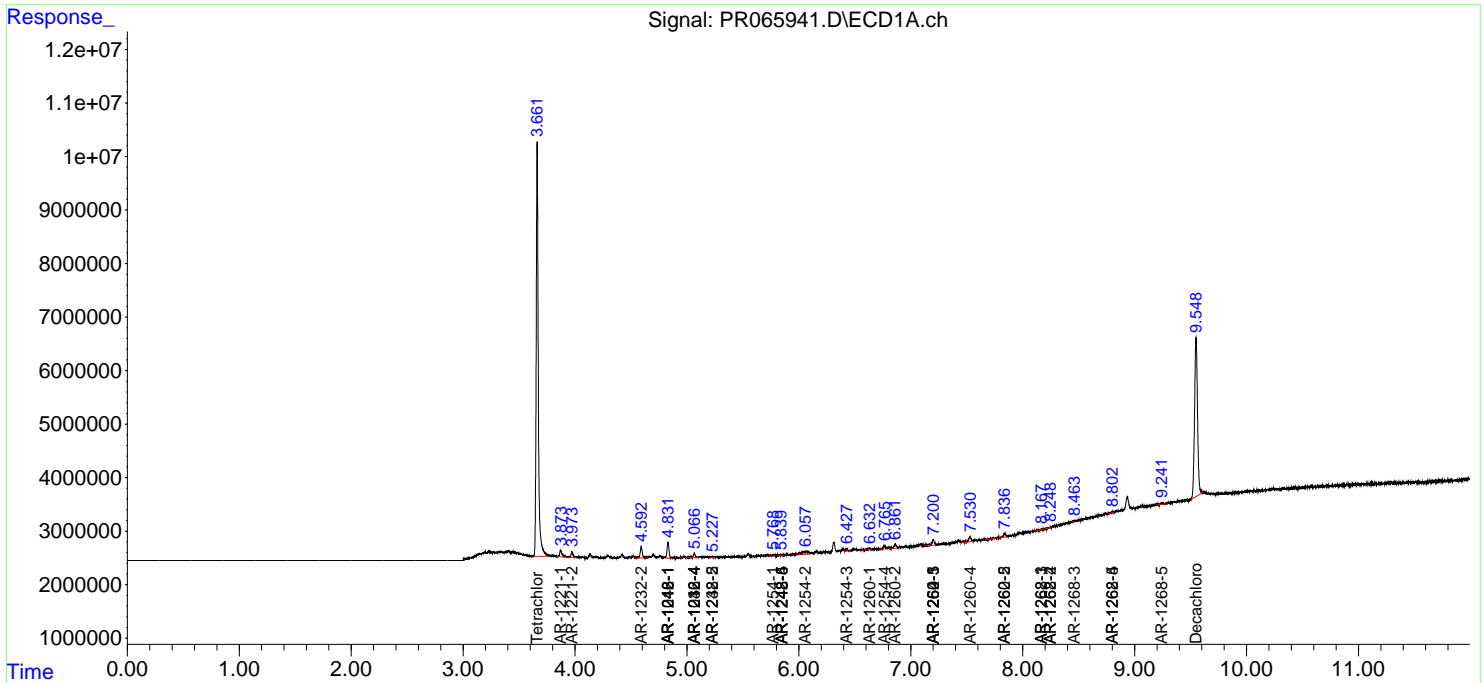
(f)=RT Delta > 1/2 Window (#)=Amounts differ by > 25% (m)=manual int.

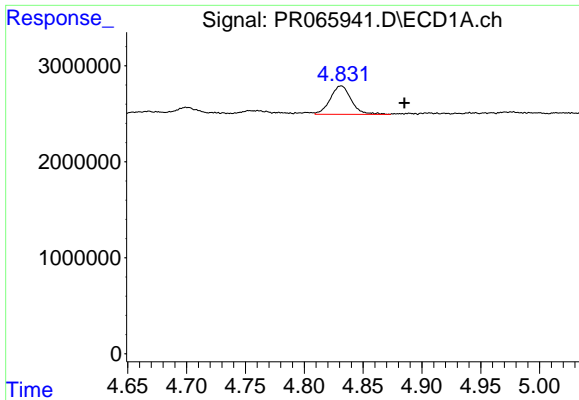
Data Path : Z:\pestpcbsrv\HPCHEM1\ECD_R\Data\PR031824\
 Data File : PR065941.D
 Signal(s) : Signal #1: ECD1A.ch Signal #2: ECD2B.ch
 Acq On : 18 Mar 2024 17:30
 Operator : AJ\MA
 Sample : P1787-06
 Misc :
 ALS Vial : 14 Sample Multiplier: 1

Instrument :
 ECD_Q
 ClientSampleId :
 E0776

Integration File signal 1: autoint1.e
 Integration File signal 2: autoint2.e
 Quant Time: Mar 19 01:28:35 2024
 Quant Method : Z:\pestpcbsrv\HPCHEM1\ECD_R\Method\PR030524CLP.M
 Quant Title : GC EXTRACTABLES
 QLast Update : Wed Mar 06 04:38:56 2024
 Response via : Initial Calibration
 Integrator: ChemStation

Volume Inj. : 1 µl
 Signal #1 Phase : ZB MR1 Signal #2 Phase: ZB MR2
 Signal #1 Info : 30Mx0.32mmx 0.5µm Signal #2 Info : 30M x 0.32mm x 0.25µm

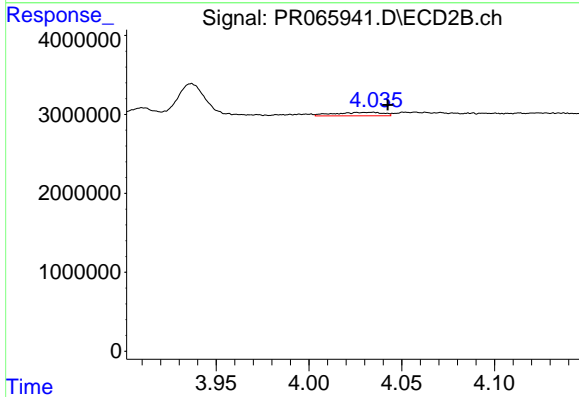




#3 AR-1016-1

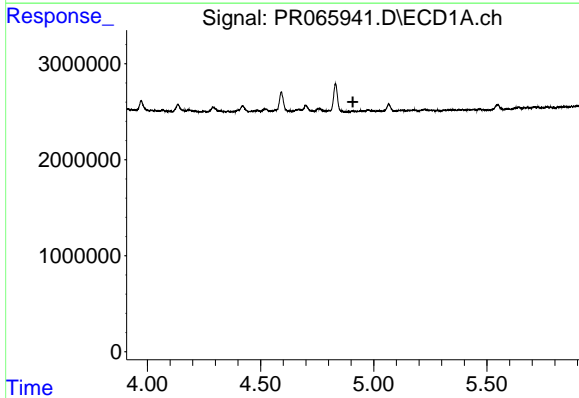
R.T.: 4.831 min
 Delta R.T.: -0.054 min
 Response: 3677262
 Conc: 30.07 ng/ml

Instrument :
 ECD_Q
 ClientSampleId :
 E0776



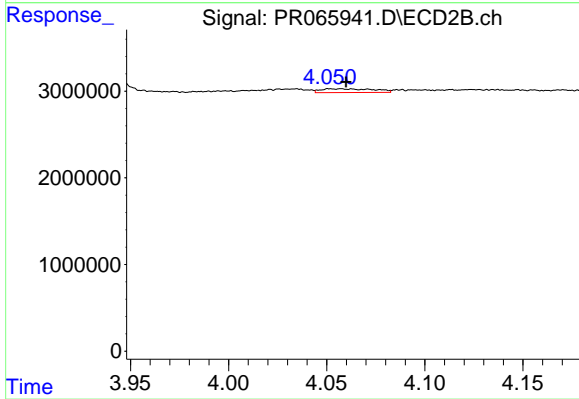
#3 AR-1016-1

R.T.: 4.034 min
 Delta R.T.: -0.008 min
 Response: 812721
 Conc: 4.51 ng/ml



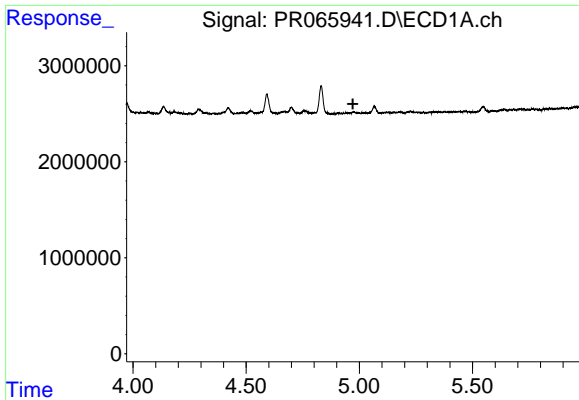
#4 AR-1016-2

R.T.: 0.000 min
 Exp R.T. : 4.908 min
 Response: 0
 Conc: N.D.



#4 AR-1016-2

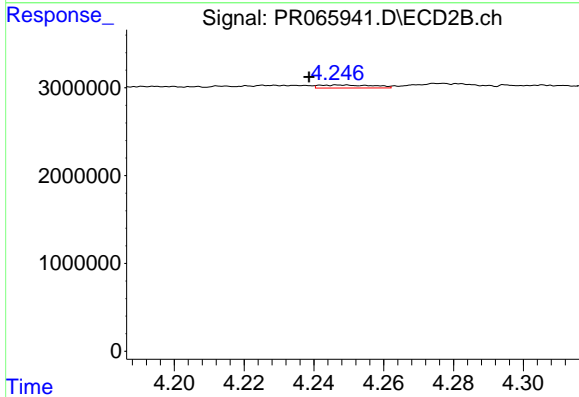
R.T.: 4.057 min
 Delta R.T.: -0.003 min
 Response: 823944
 Conc: 2.93 ng/ml



#5 AR-1016-3

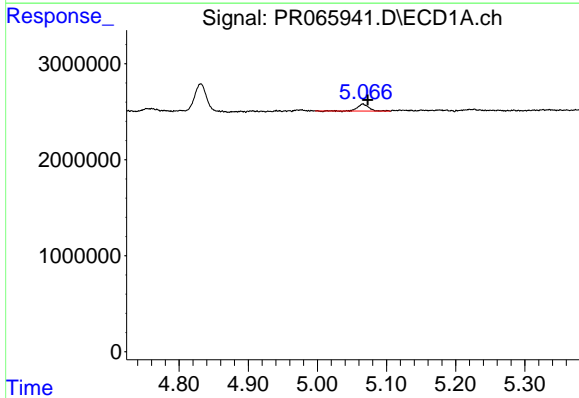
R.T.: 0.000 min
 Exp R.T.: 4.972 min
 Response: 0
 Conc: N.D.

Instrument :
 ECD_Q
 ClientSampleId :
 E0776



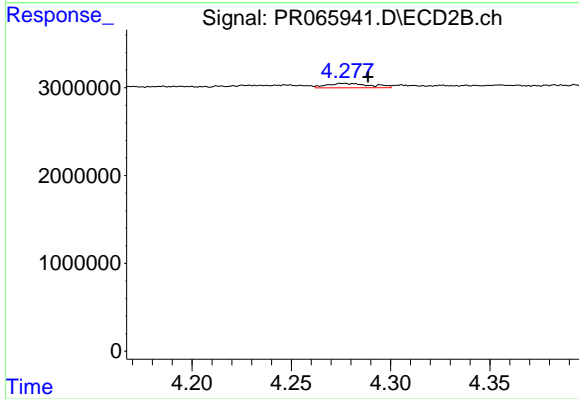
#5 AR-1016-3

R.T.: 4.248 min
 Delta R.T.: 0.009 min
 Response: 378995
 Conc: 2.49 ng/ml



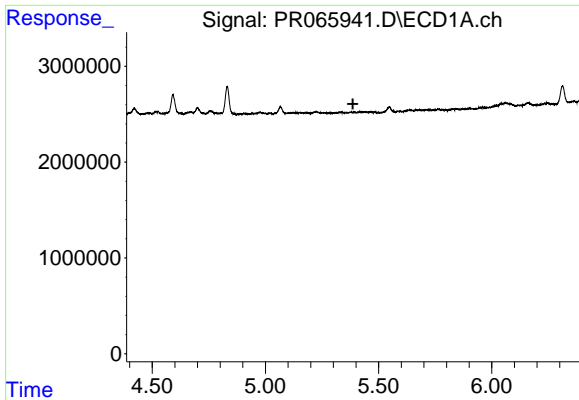
#6 AR-1016-4

R.T.: 5.066 min
 Delta R.T.: -0.007 min
 Response: 850173
 Conc: 7.72 ng/ml



#6 AR-1016-4

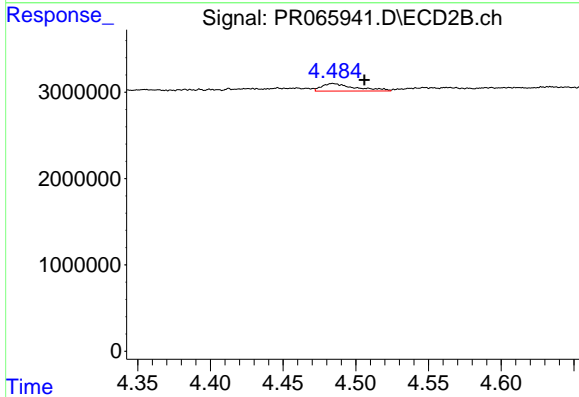
R.T.: 4.276 min
 Delta R.T.: -0.013 min
 Response: 774818
 Conc: 5.92 ng/ml



#7 AR-1016-5

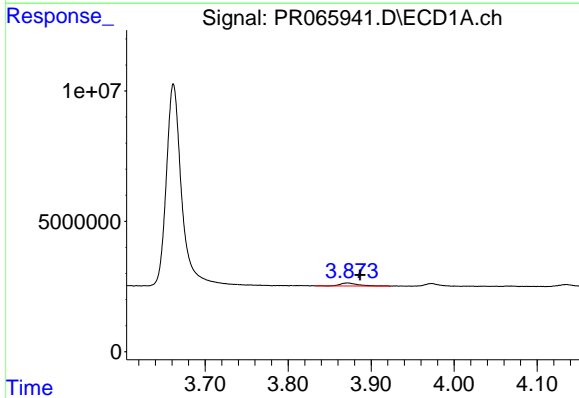
R.T.: 0.000 min
 Exp R.T.: 5.386 min
 Response: 0
 Conc: N.D.

Instrument :
 ECD_Q
 ClientSampleId :
 E0776



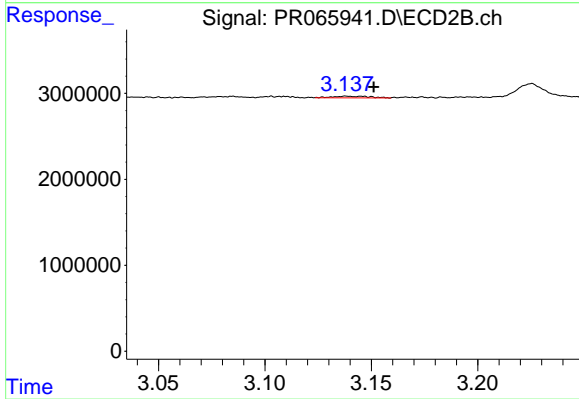
#7 AR-1016-5

R.T.: 4.484 min
 Delta R.T.: -0.022 min
 Response: 1397336
 Conc: 8.38 ng/ml



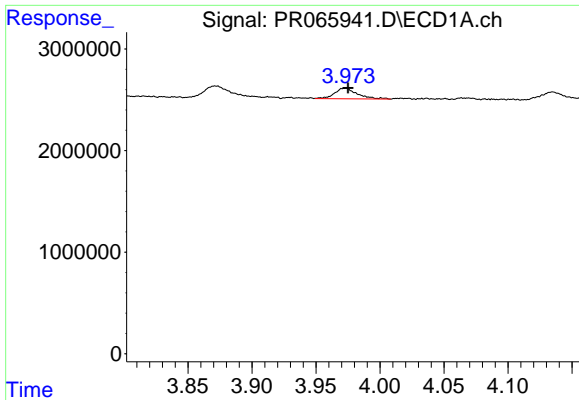
#8 AR-1221-1

R.T.: 3.872 min
 Delta R.T.: -0.015 min
 Response: 1756512
 Conc: 28.38 ng/ml



#8 AR-1221-1

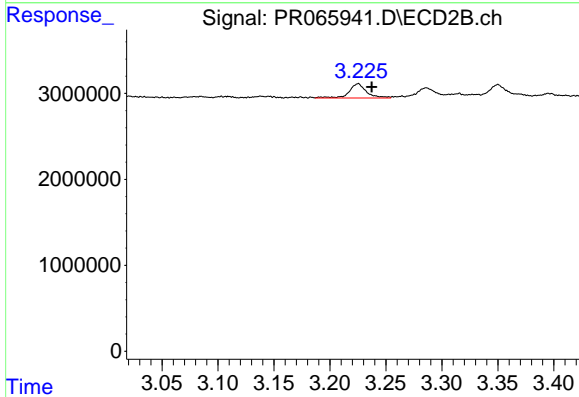
R.T.: 3.138 min
 Delta R.T.: -0.013 min
 Response: 225589
 Conc: 3.22 ng/ml



#9 AR-1221-2

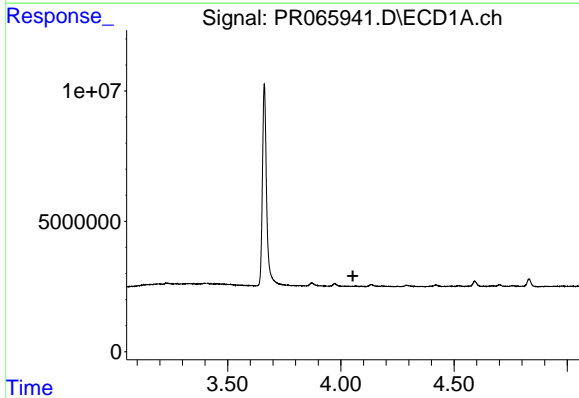
R.T.: 3.973 min
 Delta R.T.: -0.002 min
 Response: 1285088
 Conc: 29.41 ng/ml

Instrument :
 ECD_Q
 ClientSampleId :
 E0776



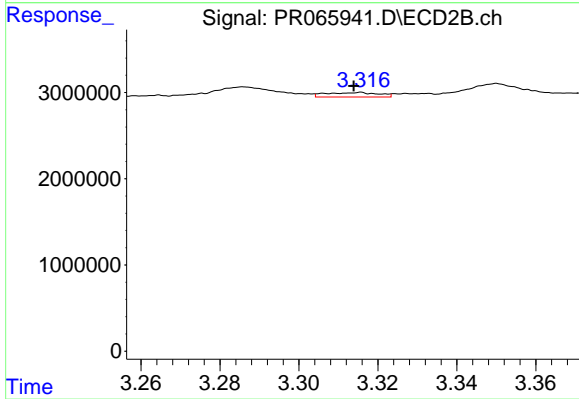
#9 AR-1221-2

R.T.: 3.225 min
 Delta R.T.: -0.012 min
 Response: 1784203
 Conc: 35.08 ng/ml



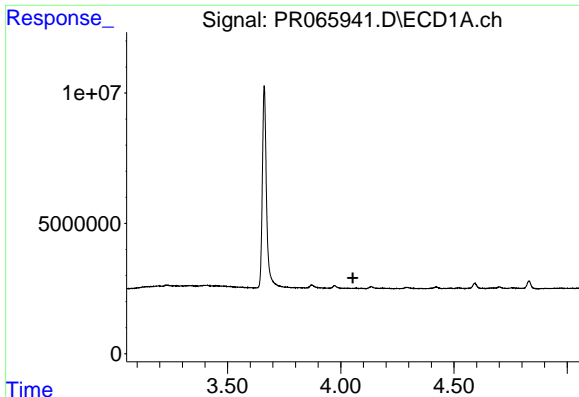
#10 AR-1221-3

R.T.: 0.000 min
 Exp R.T. : 4.053 min
 Response: 0
 Conc: N.D.



#10 AR-1221-3

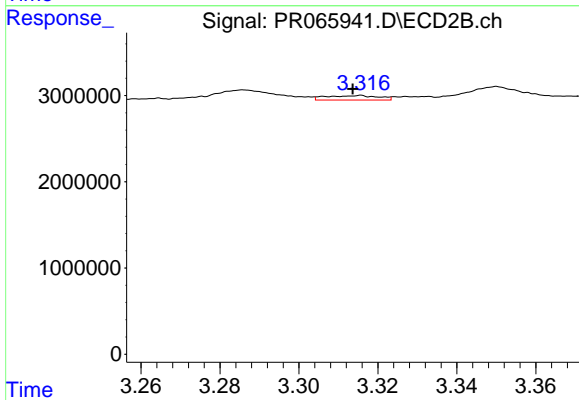
R.T.: 3.315 min
 Delta R.T.: 0.001 min
 Response: 485585
 Conc: 2.94 ng/ml



#11 AR-1232-1

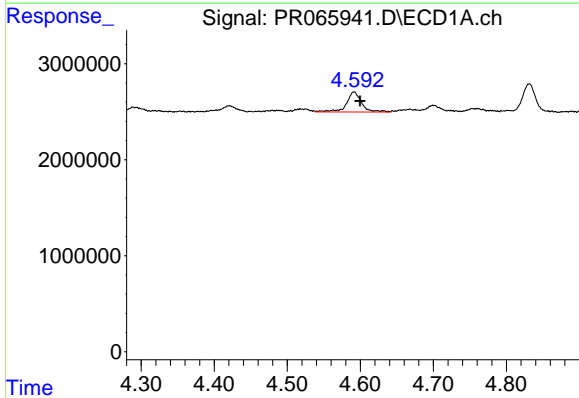
R.T.: 0.000 min
 Exp R.T.: 4.054 min
 Response: 0
 Conc: N.D.

Instrument :
 ECD_Q
 ClientSampleId :
 E0776



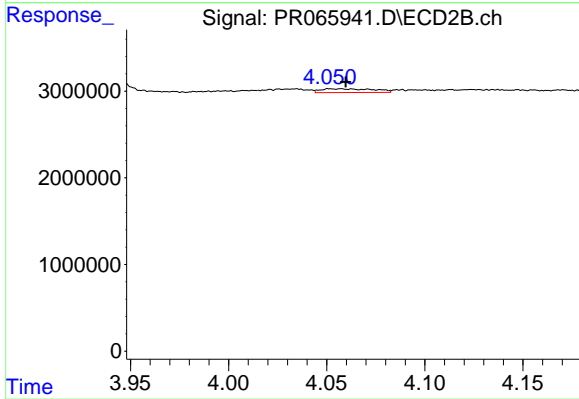
#11 AR-1232-1

R.T.: 3.315 min
 Delta R.T.: 0.002 min
 Response: 485585
 Conc: 3.48 ng/ml



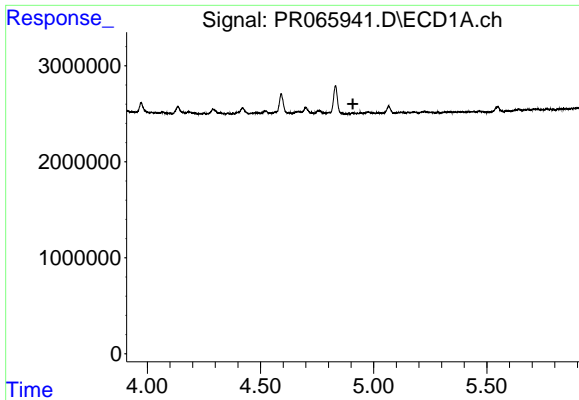
#12 AR-1232-2

R.T.: 4.591 min
 Delta R.T.: -0.008 min
 Response: 2985889
 Conc: 45.26 ng/ml



#12 AR-1232-2

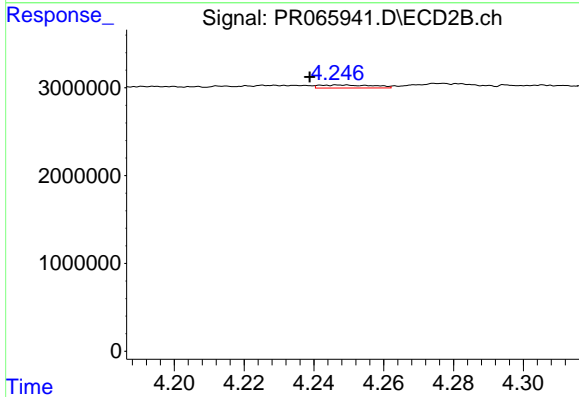
R.T.: 4.057 min
 Delta R.T.: -0.002 min
 Response: 823944
 Conc: 6.47 ng/ml



#13 AR-1232-3

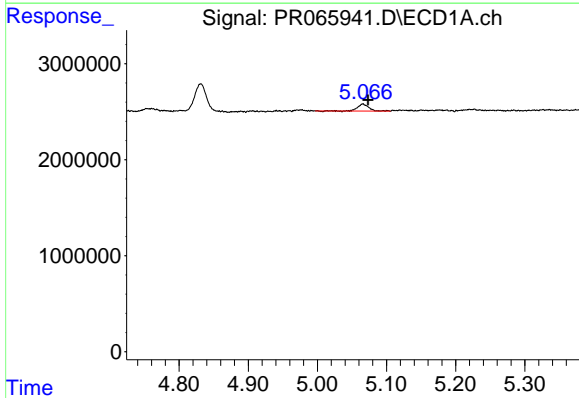
R.T.: 0.000 min
 Exp R.T.: 4.908 min
 Response: 0
 Conc: N.D.

Instrument :
 ECD_Q
 ClientSampleId :
 E0776



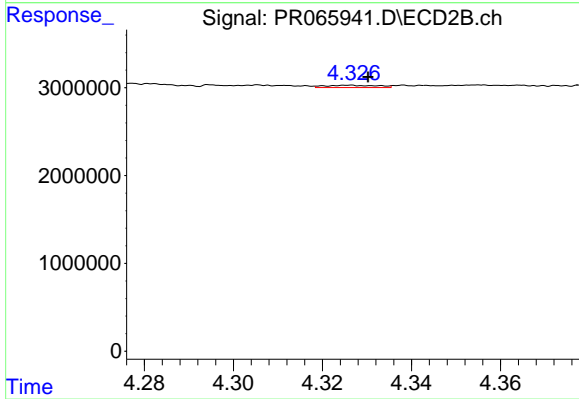
#13 AR-1232-3

R.T.: 4.248 min
 Delta R.T.: 0.009 min
 Response: 378995
 Conc: 5.56 ng/ml



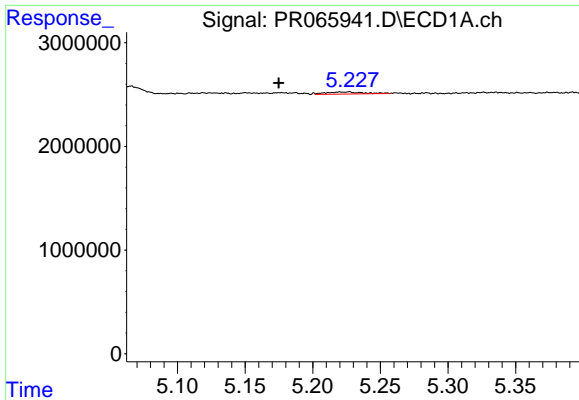
#14 AR-1232-4

R.T.: 5.066 min
 Delta R.T.: -0.008 min
 Response: 850173
 Conc: 17.54 ng/ml



#14 AR-1232-4

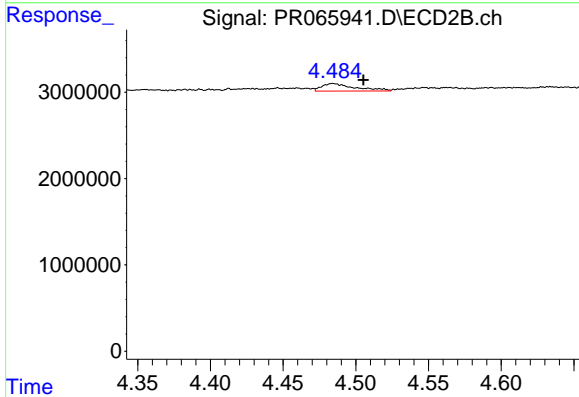
R.T.: 4.326 min
 Delta R.T.: -0.004 min
 Response: 212354
 Conc: 3.37 ng/ml



#15 AR-1232-5

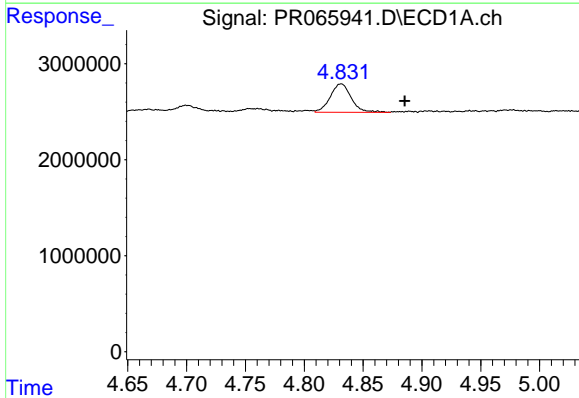
R.T.: 5.227 min
 Delta R.T.: 0.052 min
 Response: 393904
 Conc: 10.10 ng/ml

Instrument :
 ECD_Q
 ClientSampleId :
 E0776



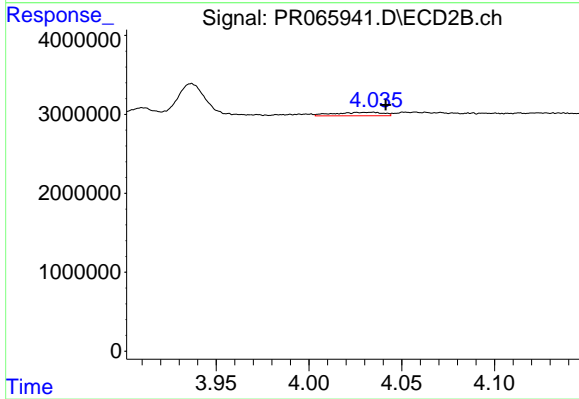
#15 AR-1232-5

R.T.: 4.484 min
 Delta R.T.: -0.021 min
 Response: 1397336
 Conc: 20.31 ng/ml



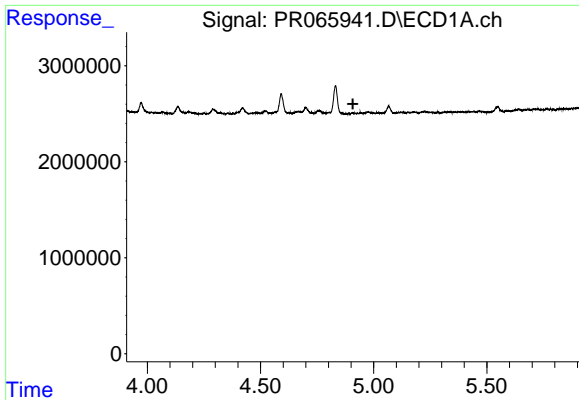
#16 AR-1242-1

R.T.: 4.831 min
 Delta R.T.: -0.054 min
 Response: 3677262
 Conc: 35.77 ng/ml



#16 AR-1242-1

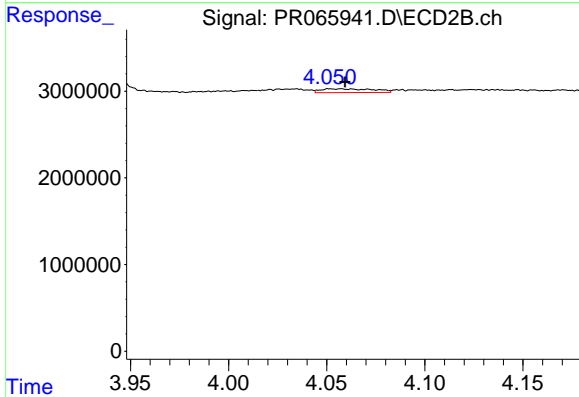
R.T.: 4.034 min
 Delta R.T.: -0.007 min
 Response: 812721
 Conc: 5.18 ng/ml



#17 AR-1242-2

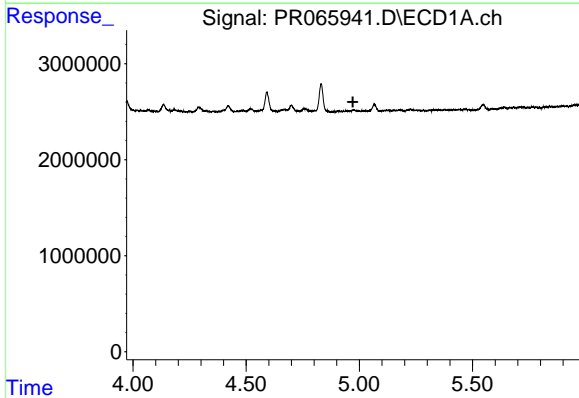
R.T.: 0.000 min
 Exp R.T. : 4.908 min
 Response: 0
 Conc: N.D.

Instrument :
 ECD_Q
 ClientSampleId :
 E0776



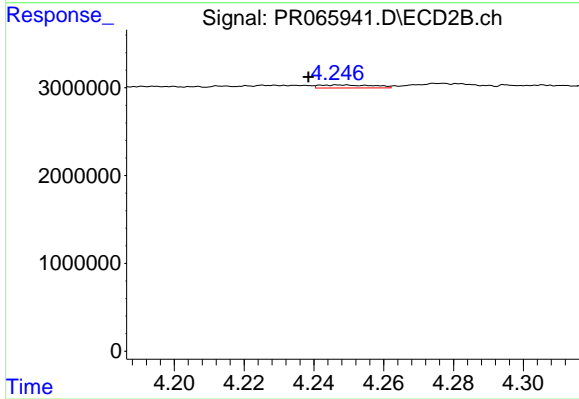
#17 AR-1242-2

R.T.: 4.057 min
 Delta R.T.: -0.002 min
 Response: 823944
 Conc: 3.54 ng/ml



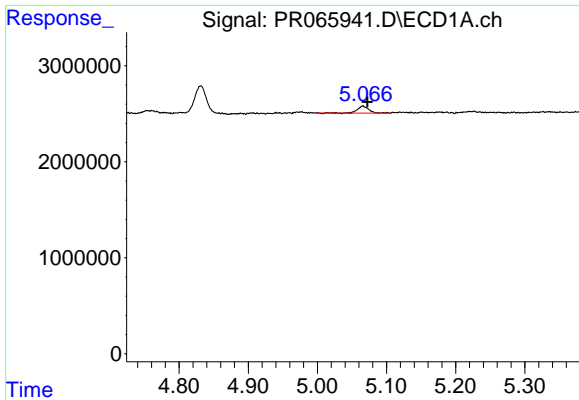
#18 AR-1242-3

R.T.: 0.000 min
 Exp R.T. : 4.972 min
 Response: 0
 Conc: N.D.



#18 AR-1242-3

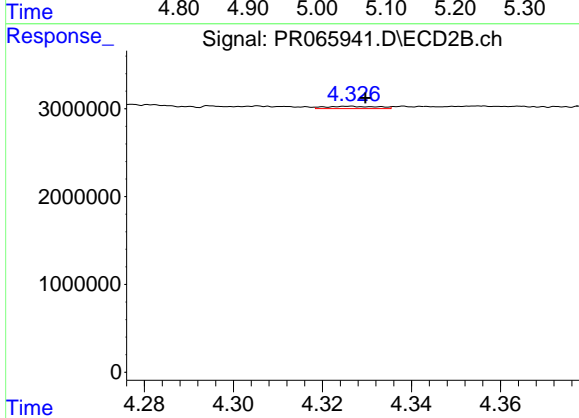
R.T.: 4.248 min
 Delta R.T.: 0.009 min
 Response: 378995
 Conc: 2.98 ng/ml



#19 AR-1242-4

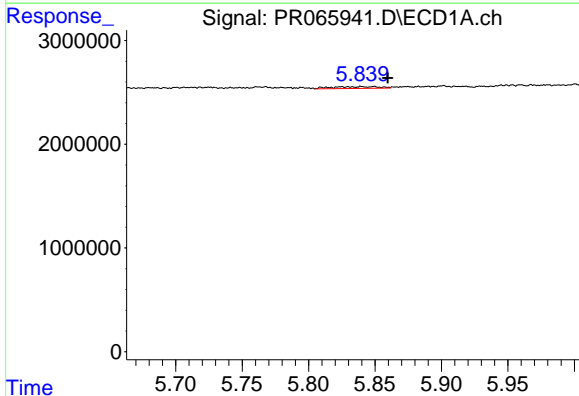
R.T.: 5.066 min
 Delta R.T.: -0.007 min
 Response: 850173
 Conc: 9.47 ng/ml

Instrument :
 ECD_Q
 ClientSampleId :
 E0776



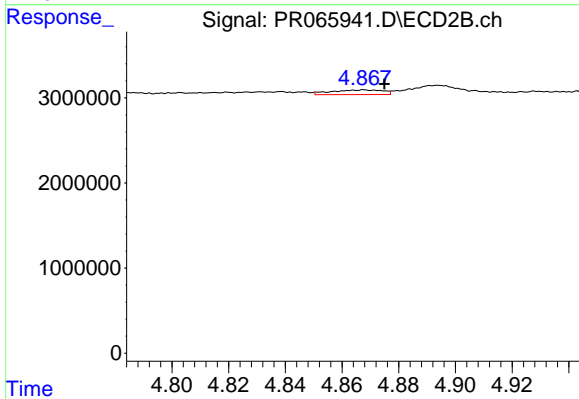
#19 AR-1242-4

R.T.: 4.326 min
 Delta R.T.: -0.004 min
 Response: 212354
 Conc: 1.64 ng/ml



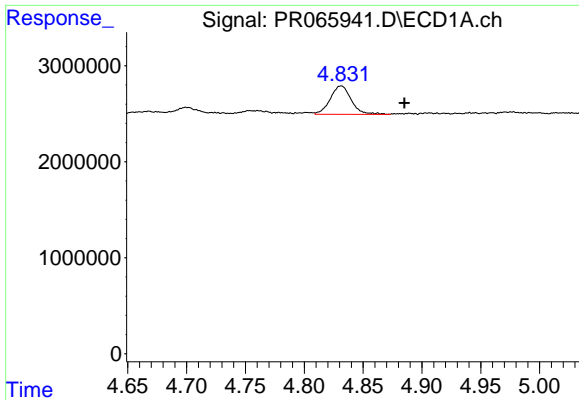
#20 AR-1242-5

R.T.: 5.849 min
 Delta R.T.: -0.010 min
 Response: 438171
 Conc: 5.56 ng/ml



#20 AR-1242-5

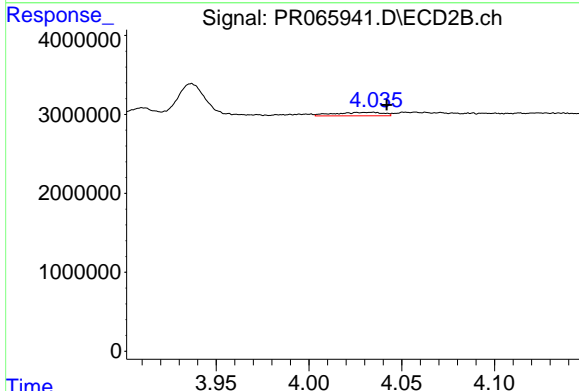
R.T.: 4.868 min
 Delta R.T.: -0.007 min
 Response: 678822
 Conc: 4.65 ng/ml



#21 AR-1248-1

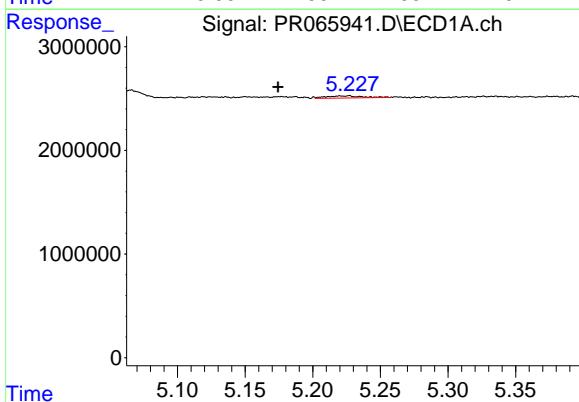
R.T.: 4.831 min
 Delta R.T.: -0.054 min
 Response: 3677262
 Conc: 46.63 ng/ml

Instrument :
 ECD_Q
 ClientSampleId :
 E0776



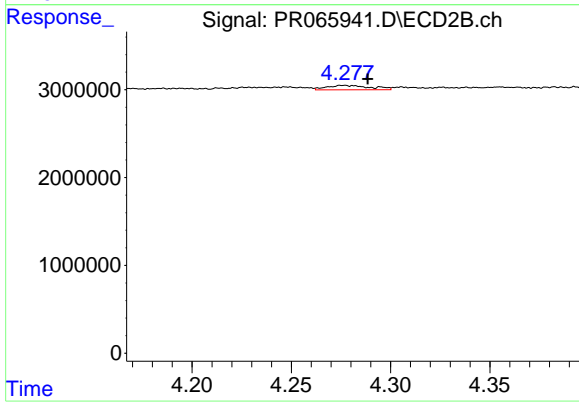
#21 AR-1248-1

R.T.: 4.034 min
 Delta R.T.: -0.008 min
 Response: 812721
 Conc: 6.71 ng/ml



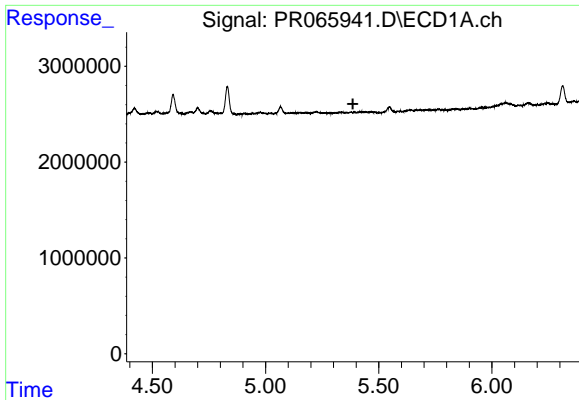
#22 AR-1248-2

R.T.: 5.227 min
 Delta R.T.: 0.052 min
 Response: 393904
 Conc: 2.88 ng/ml



#22 AR-1248-2

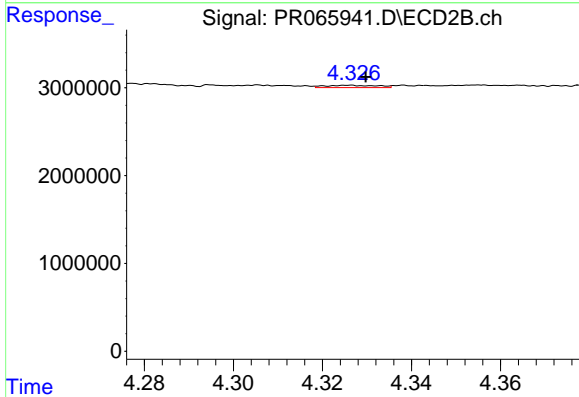
R.T.: 4.276 min
 Delta R.T.: -0.012 min
 Response: 774818
 Conc: 4.13 ng/ml



#23 AR-1248-3

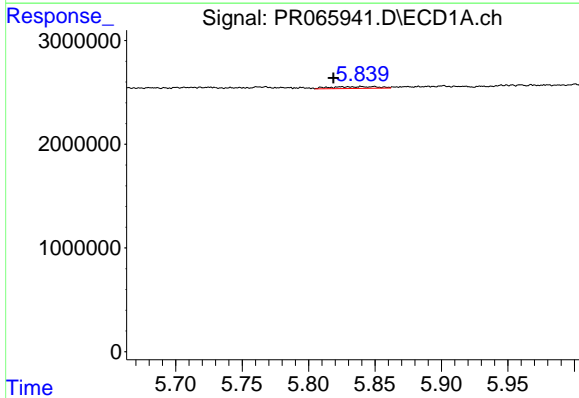
R.T.: 0.000 min
 Exp R.T.: 5.386 min
 Response: 0
 Conc: N.D.

Instrument :
 ECD_Q
 ClientSampleId :
 E0776



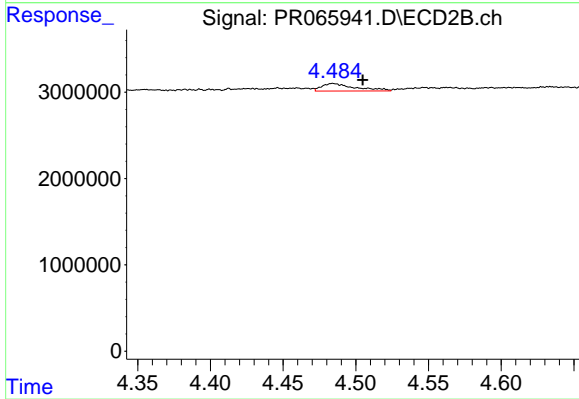
#23 AR-1248-3

R.T.: 4.326 min
 Delta R.T.: -0.004 min
 Response: 212354
 Conc: 1.12 ng/ml



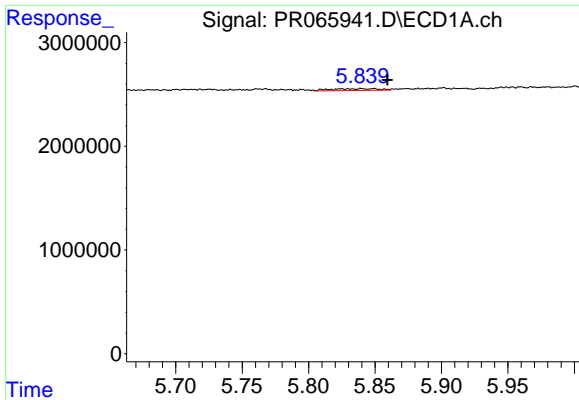
#24 AR-1248-4

R.T.: 5.849 min
 Delta R.T.: 0.031 min
 Response: 438171
 Conc: 3.43 ng/ml



#24 AR-1248-4

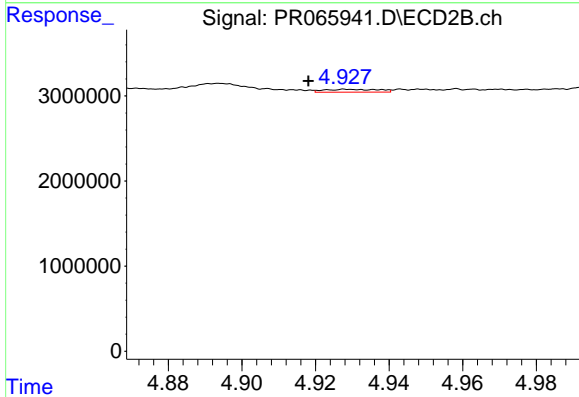
R.T.: 4.484 min
 Delta R.T.: -0.021 min
 Response: 1397336
 Conc: 6.13 ng/ml



#25 AR-1248-5

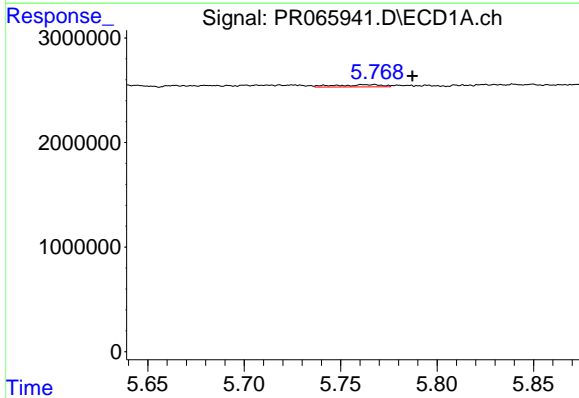
R.T.: 5.849 min
 Delta R.T.: -0.010 min
 Response: 438171
 Conc: 3.21 ng/ml

Instrument :
 ECD_Q
 ClientSampleId :
 E0776



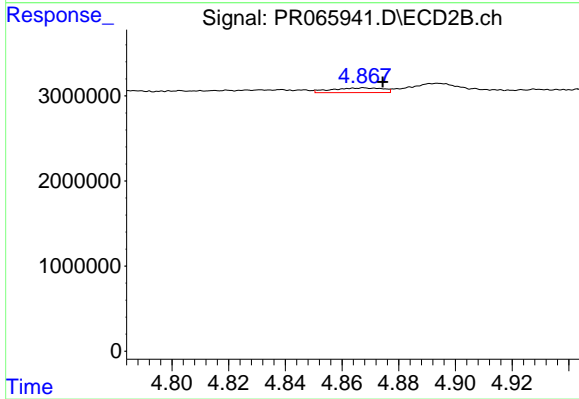
#25 AR-1248-5

R.T.: 4.929 min
 Delta R.T.: 0.011 min
 Response: 347996
 Conc: 1.84 ng/ml



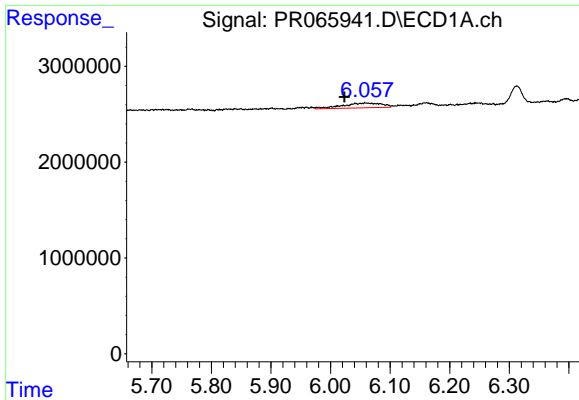
#26 AR-1254-1

R.T.: 5.768 min
 Delta R.T.: -0.020 min
 Response: 364931
 Conc: 2.17 ng/ml



#26 AR-1254-1

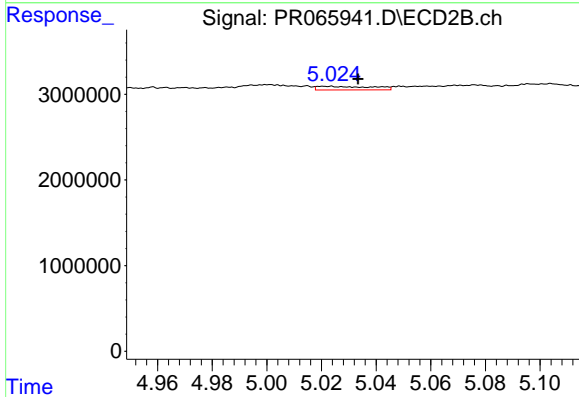
R.T.: 4.868 min
 Delta R.T.: -0.007 min
 Response: 678822
 Conc: 2.05 ng/ml



#27 AR-1254-2

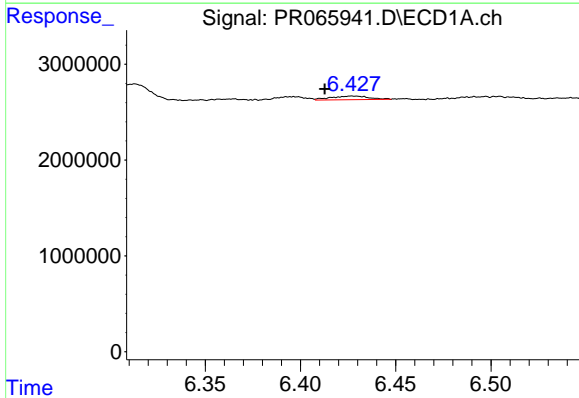
R.T.: 6.058 min
 Delta R.T.: 0.035 min
 Response: 2309594
 Conc: 9.59 ng/ml

Instrument :
 ECD_Q
 ClientSampleId :
 E0776



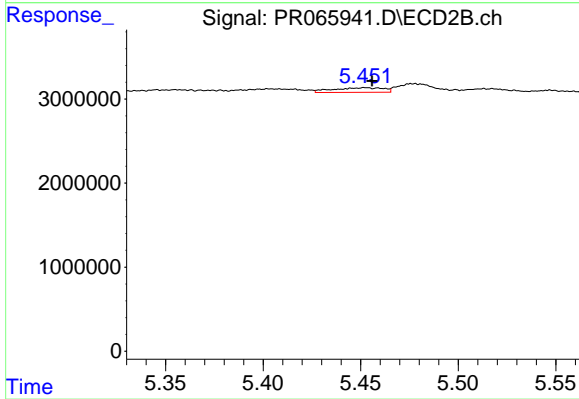
#27 AR-1254-2

R.T.: 5.021 min
 Delta R.T.: -0.012 min
 Response: 598120
 Conc: 2.06 ng/ml



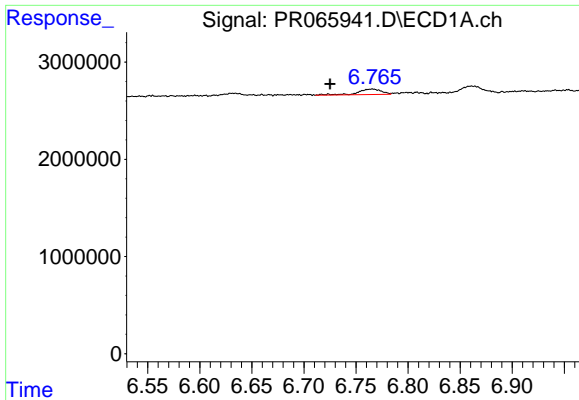
#28 AR-1254-3

R.T.: 6.427 min
 Delta R.T.: 0.015 min
 Response: 538007
 Conc: 2.38 ng/ml



#28 AR-1254-3

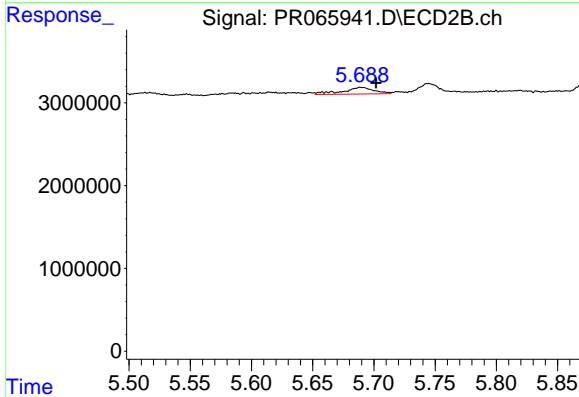
R.T.: 5.452 min
 Delta R.T.: -0.003 min
 Response: 974885
 Conc: 2.18 ng/ml



#29 AR-1254-4

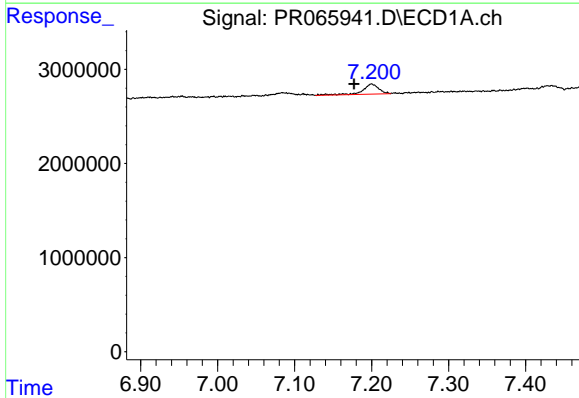
R.T.: 6.766 min
 Delta R.T.: 0.041 min
 Response: 866131
 Conc: 6.91 ng/ml

Instrument :
 ECD_Q
 ClientSampleId :
 E0776



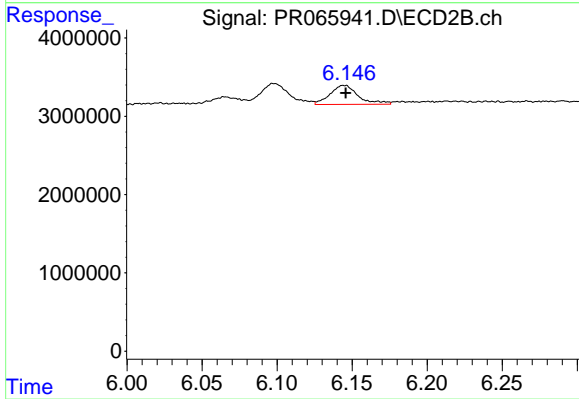
#29 AR-1254-4

R.T.: 5.690 min
 Delta R.T.: -0.012 min
 Response: 1417264
 Conc: 6.27 ng/ml



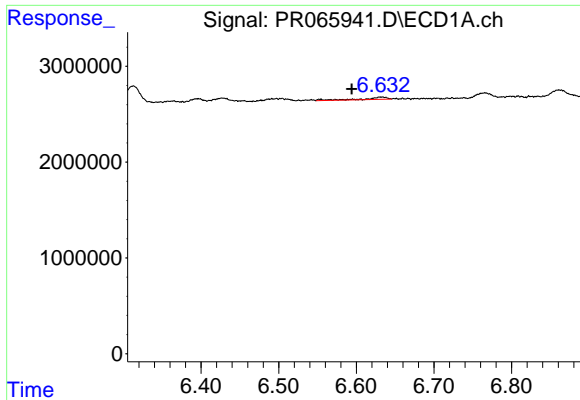
#30 AR-1254-5

R.T.: 7.200 min
 Delta R.T.: 0.023 min
 Response: 1571245
 Conc: 10.18 ng/ml



#30 AR-1254-5

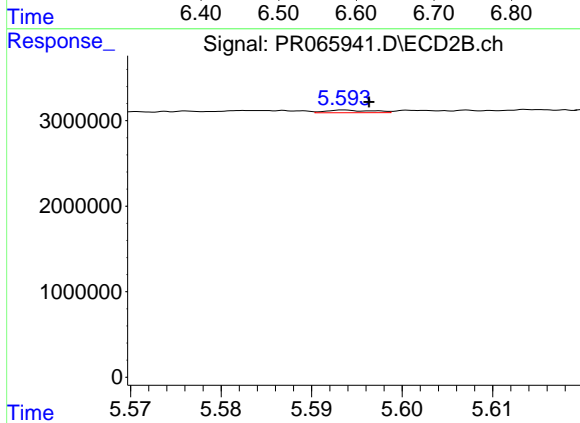
R.T.: 6.145 min
 Delta R.T.: -0.001 min
 Response: 3180621
 Conc: 8.34 ng/ml



#31 AR-1260-1

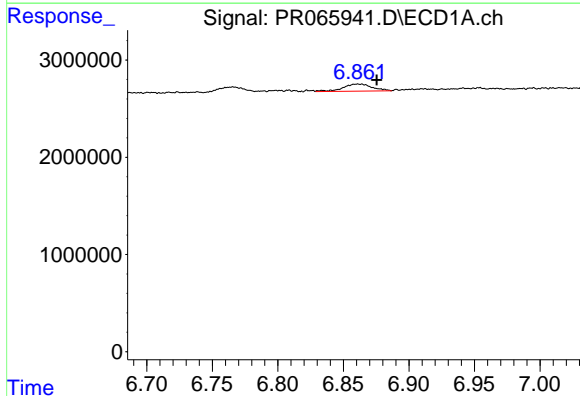
R.T.: 6.632 min
 Delta R.T.: 0.038 min
 Response: 467780
 Conc: 2.31 ng/ml

Instrument :
 ECD_Q
 ClientSampleId :
 E0776



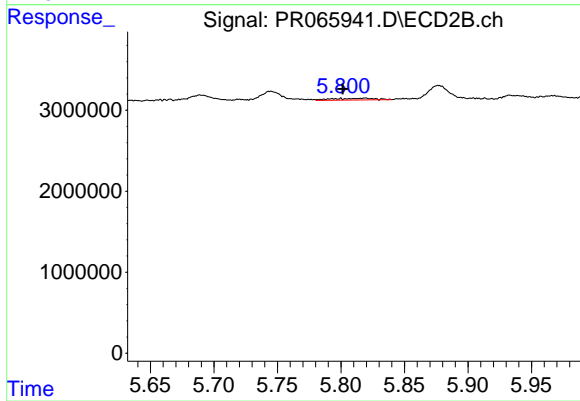
#31 AR-1260-1

R.T.: 5.594 min
 Delta R.T.: -0.002 min
 Response: 110722
 Conc: 0.34 ng/ml



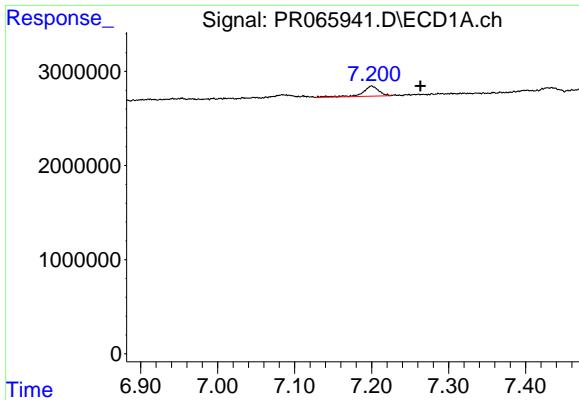
#32 AR-1260-2

R.T.: 6.861 min
 Delta R.T.: -0.014 min
 Response: 1129551
 Conc: 5.78 ng/ml



#32 AR-1260-2

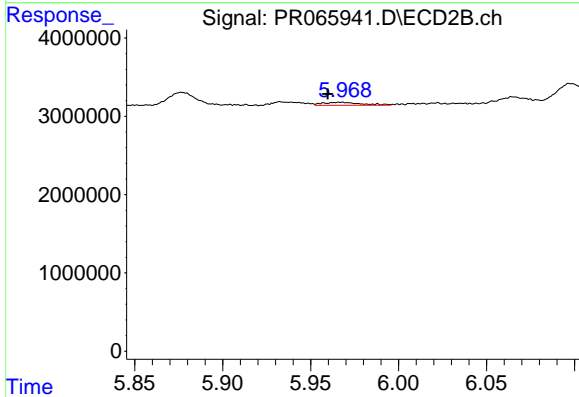
R.T.: 5.819 min
 Delta R.T.: 0.018 min
 Response: 509947
 Conc: 1.41 ng/ml



#33 AR-1260-3

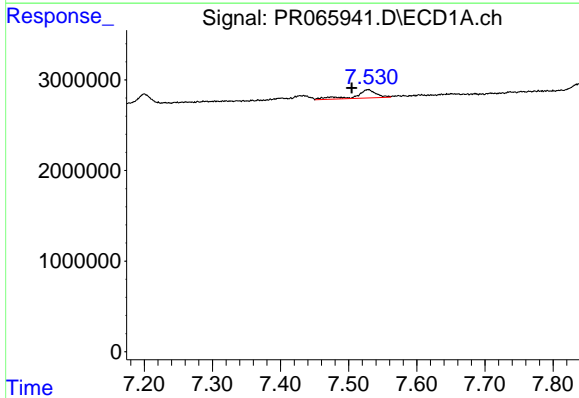
R.T.: 7.200 min
 Delta R.T.: -0.063 min
 Response: 1571245
 Conc: 9.61 ng/ml

Instrument :
 ECD_Q
 ClientSampleId :
 E0776



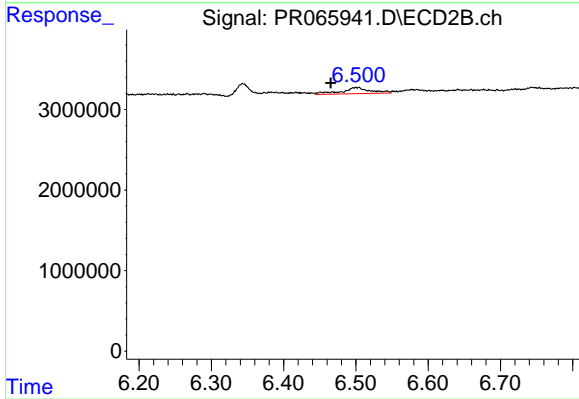
#33 AR-1260-3

R.T.: 5.967 min
 Delta R.T.: 0.008 min
 Response: 570857
 Conc: 1.60 ng/ml



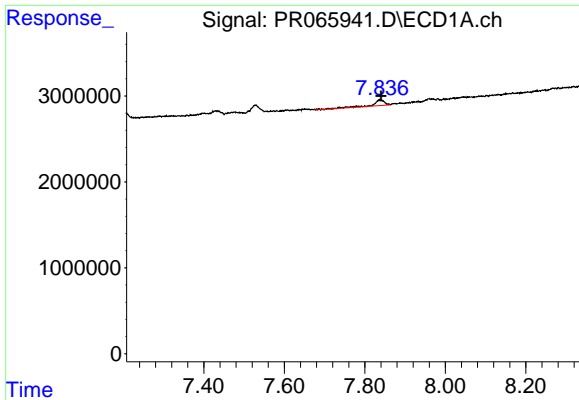
#34 AR-1260-4

R.T.: 7.529 min
 Delta R.T.: 0.025 min
 Response: 1963402
 Conc: 11.48 ng/ml



#34 AR-1260-4

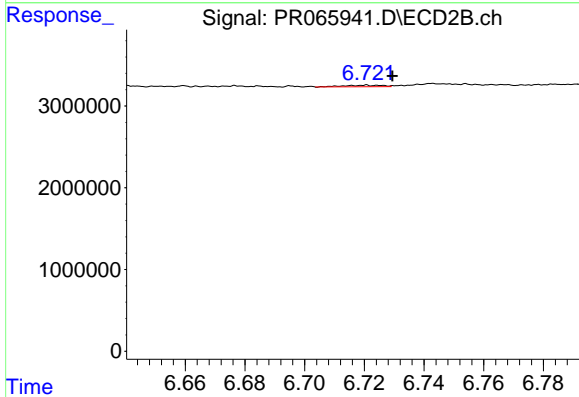
R.T.: 6.501 min
 Delta R.T.: 0.035 min
 Response: 2122605
 Conc: 7.17 ng/ml



#35 AR-1260-5

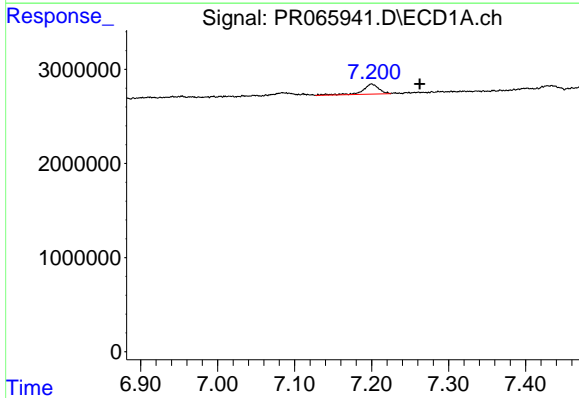
R.T.: 7.838 min
 Delta R.T.: -0.003 min
 Response: 1368237
 Conc: 5.21 ng/ml

Instrument :
 ECD_Q
 ClientSampleId :
 E0776



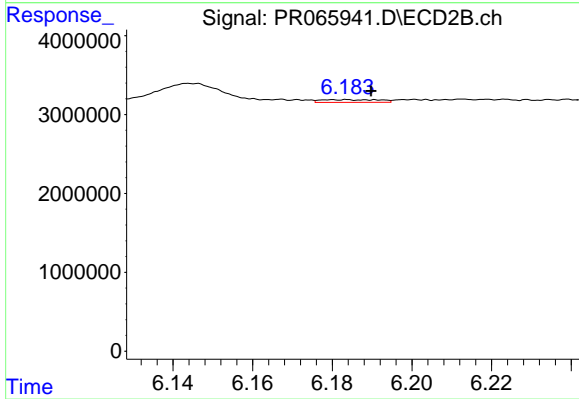
#35 AR-1260-5

R.T.: 6.721 min
 Delta R.T.: -0.008 min
 Response: 159337
 Conc: 0.27 ng/ml



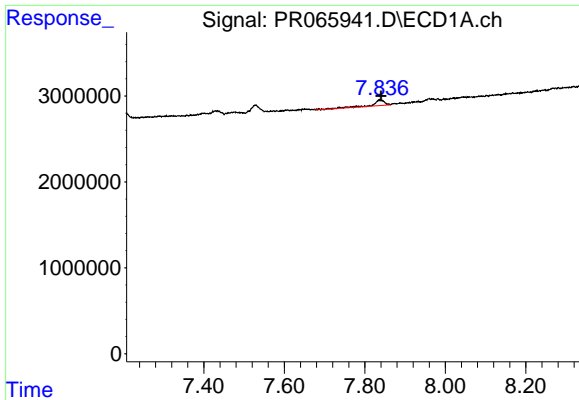
#36 AR-1262-1

R.T.: 7.200 min
 Delta R.T.: -0.062 min
 Response: 1571245
 Conc: 7.28 ng/ml



#36 AR-1262-1

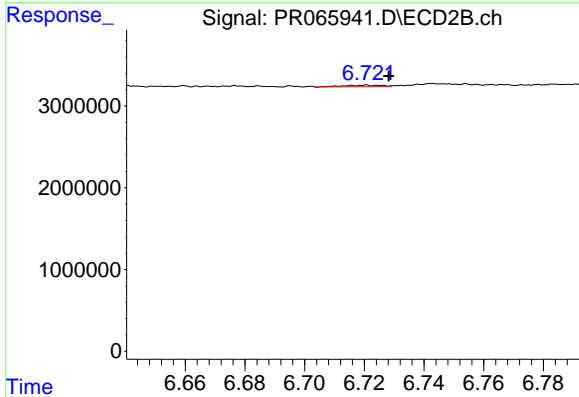
R.T.: 6.183 min
 Delta R.T.: -0.006 min
 Response: 346248
 Conc: 0.82 ng/ml



#37 AR-1262-2

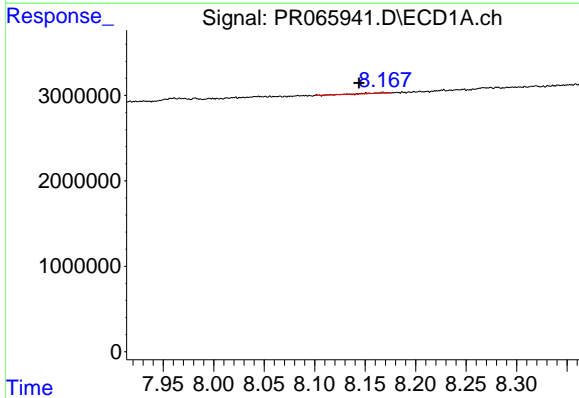
R.T.: 7.838 min
 Delta R.T.: -0.002 min
 Response: 1368237
 Conc: 4.75 ng/ml

Instrument :
 ECD_Q
 ClientSampleId :
 E0776



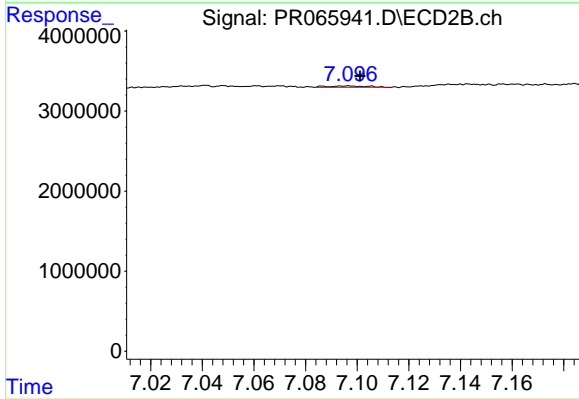
#37 AR-1262-2

R.T.: 6.721 min
 Delta R.T.: -0.007 min
 Response: 159337
 Conc: 0.24 ng/ml



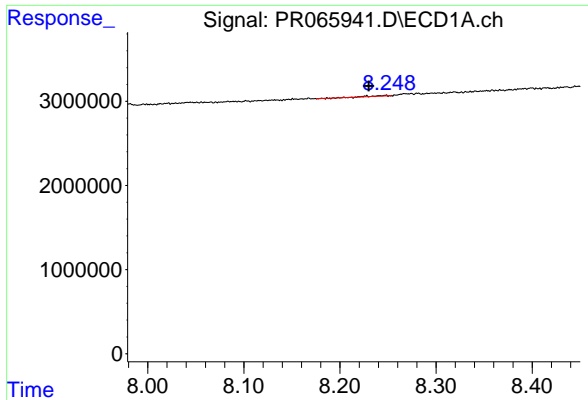
#38 AR-1262-3

R.T.: 8.168 min
 Delta R.T.: 0.024 min
 Response: 73603
 Conc: 0.36 ng/ml



#38 AR-1262-3

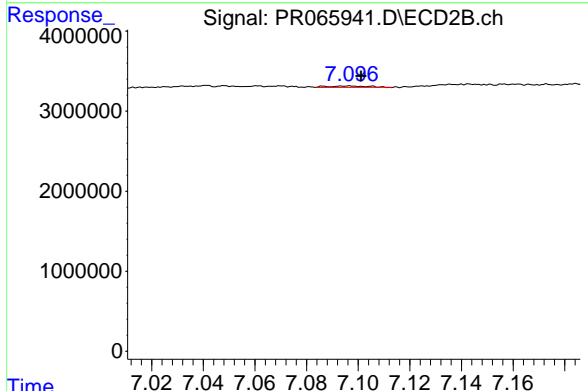
R.T.: 7.096 min
 Delta R.T.: -0.005 min
 Response: 178274
 Conc: 0.36 ng/ml



#39 AR-1262-4

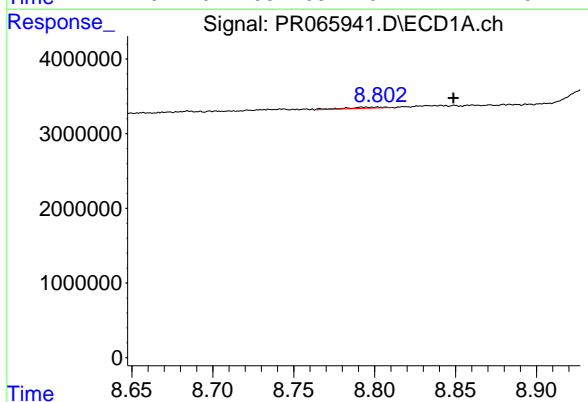
R.T.: 8.248 min
 Delta R.T.: 0.018 min
 Response: 85483
 Conc: 0.51 ng/ml

Instrument :
 ECD_Q
 ClientSampleId :
 E0776



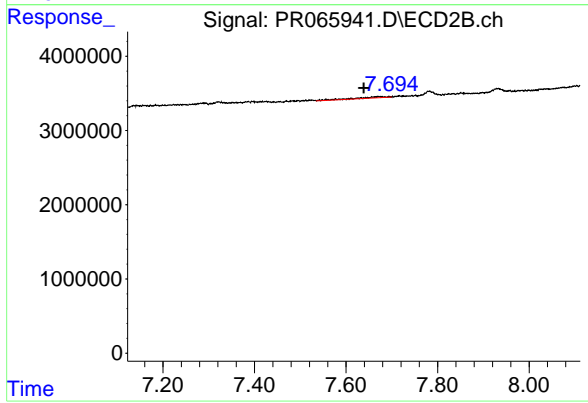
#39 AR-1262-4

R.T.: 7.096 min
 Delta R.T.: -0.005 min
 Response: 178274
 Conc: 0.36 ng/ml



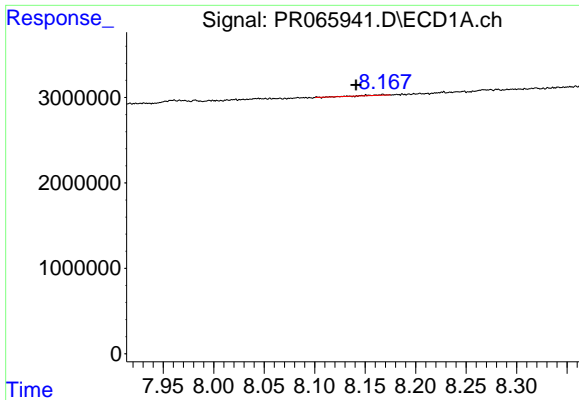
#40 AR-1262-5

R.T.: 8.802 min
 Delta R.T.: -0.047 min
 Response: 270105
 Conc: 3.03 ng/ml



#40 AR-1262-5

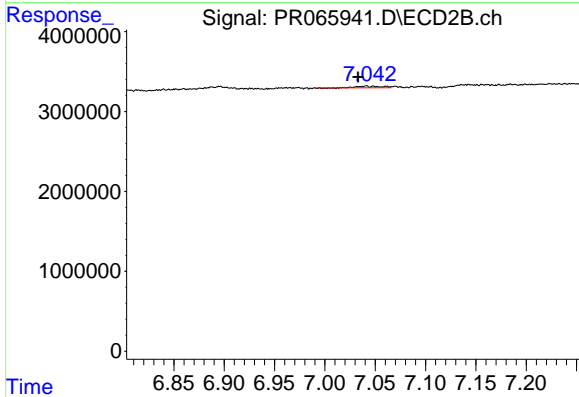
R.T.: 7.672 min
 Delta R.T.: 0.033 min
 Response: 680995
 Conc: 3.25 ng/ml



#41 AR-1268-1

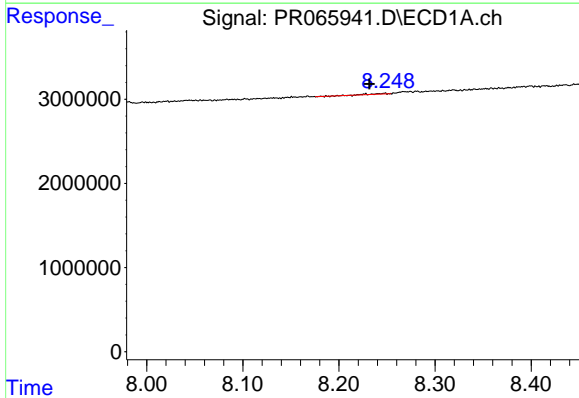
R.T.: 8.168 min
 Delta R.T.: 0.027 min
 Response: 73603
 Conc: 0.19 ng/ml

Instrument :
 ECD_Q
 ClientSampleId :
 E0776



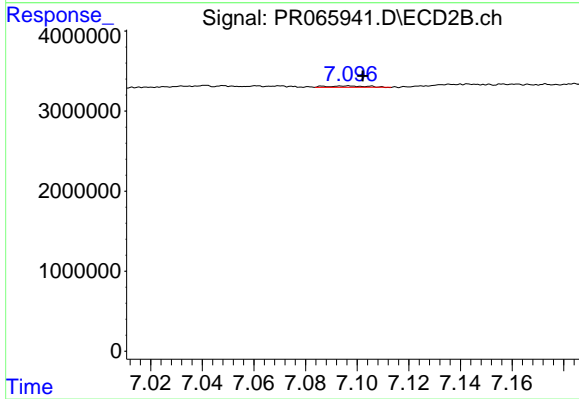
#41 AR-1268-1

R.T.: 7.041 min
 Delta R.T.: 0.008 min
 Response: 350969
 Conc: 0.45 ng/ml



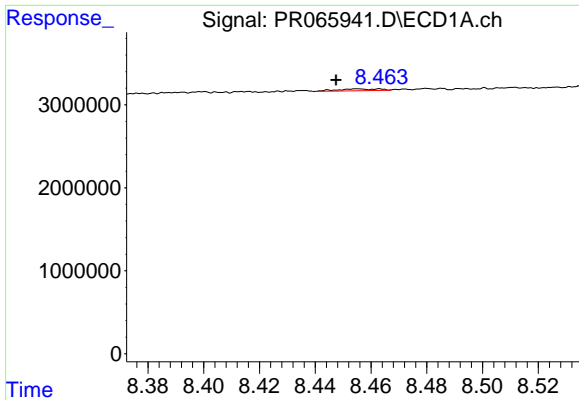
#42 AR-1268-2

R.T.: 8.248 min
 Delta R.T.: 0.016 min
 Response: 85483
 Conc: 0.25 ng/ml



#42 AR-1268-2

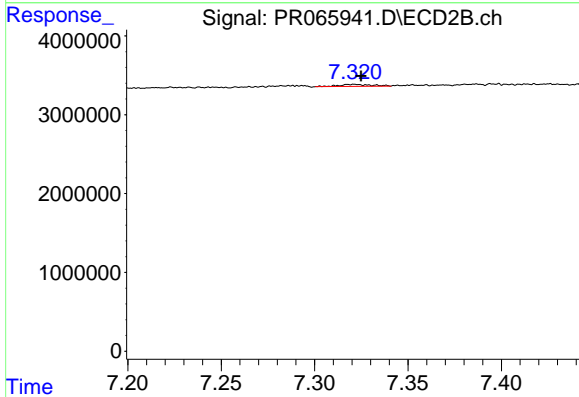
R.T.: 7.096 min
 Delta R.T.: -0.006 min
 Response: 178274
 Conc: 0.26 ng/ml



#43 AR-1268-3

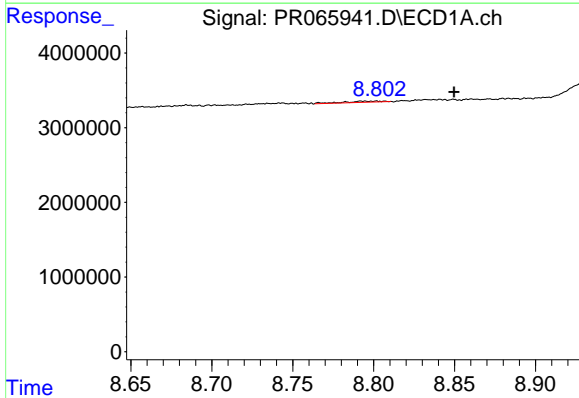
R.T.: 8.455 min
 Delta R.T.: 0.008 min
 Response: 232277
 Conc: 0.74 ng/ml

Instrument :
 ECD_Q
 ClientSampleId :
 E0776



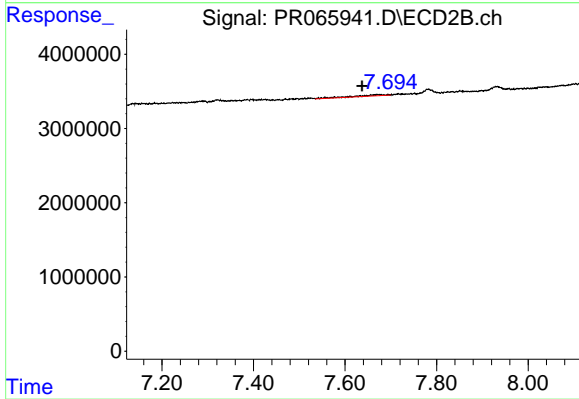
#43 AR-1268-3

R.T.: 7.321 min
 Delta R.T.: -0.004 min
 Response: 312330
 Conc: 0.49 ng/ml



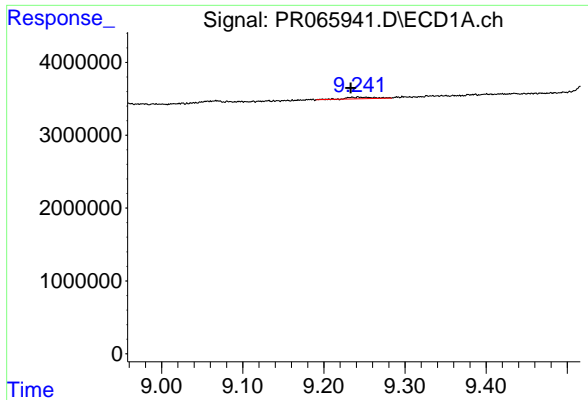
#44 AR-1268-4

R.T.: 8.802 min
 Delta R.T.: -0.048 min
 Response: 270105
 Conc: 2.78 ng/ml



#44 AR-1268-4

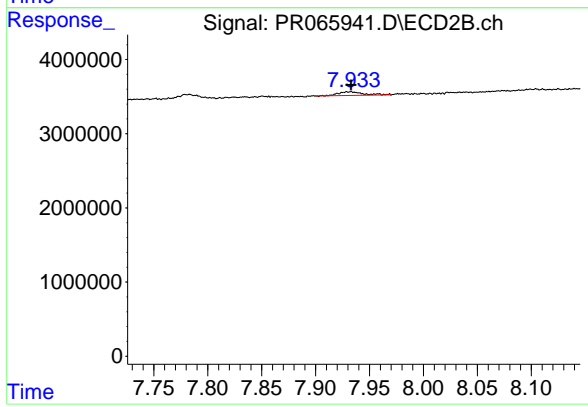
R.T.: 7.672 min
 Delta R.T.: 0.034 min
 Response: 680995
 Conc: 3.03 ng/ml



#45 AR-1268-5

R.T.: 9.243 min
 Delta R.T.: 0.009 min
 Response: 511782
 Conc: 0.61 ng/ml

Instrument :
 ECD_Q
 ClientSampleId :
 E0776



#45 AR-1268-5

R.T.: 7.932 min
 Delta R.T.: -0.001 min
 Response: 803949
 Conc: 0.48 ng/ml