

Data Path : Z:\pestpcbsrv\HPCHEM1\ECD_Q\Data\PQ032219\
 Data File : PQ038134.D
 Signal(s) : Signal #1: ECD1A.ch Signal #2: ECD2B.ch
 Acq On : 22 Mar 2019 10:00
 Operator : SM\SJ
 Sample : K1989-05RE
 Misc :
 ALS Vial : 21 Sample Multiplier: 1

Instrument :
 ECD_Q
ClientSampleId :
 PEDESTALS-1-11RE

Manual Integrations
APPROVED
 Sohil
 3/22/2019 1:53:48 PM

Integration File signal 1: autoint1.e
 Integration File signal 2: autoint2.e
 Quant Time: Mar 22 11:35:54 2019
 Quant Method : Z:\pestpcbsrv\HPCHEM1\ECD_Q\Method\PQ032019.M
 Quant Title : GC EXTRACTABLES
 QLast Update : Wed Mar 20 09:51:59 2019
 Response via : Initial Calibration
 Integrator: ChemStation

Volume Inj. : 2 µl
 Signal #1 Phase : ZB-MR1 Signal #2 Phase: ZB-MR2
 Signal #1 Info : 30Mx0.32mmx 0.50µ Signal #2 Info : 30M x 0.32mm x 0.25µm

Compound	RT#1	RT#2	Resp#1	Resp#2	ng/ml	ng/ml

System Monitoring Compounds						
1) SA Tetrachlo...	4.177	3.634	197.5E6	124.4E6	33.936m	40.263
2) SA Decachlor...	9.600	8.501	993.0E6	103.3E6	205.955	46.134m#

Target Compounds

(f)=RT Delta > 1/2 Window (#)=Amounts differ by > 25% (m)=manual int.

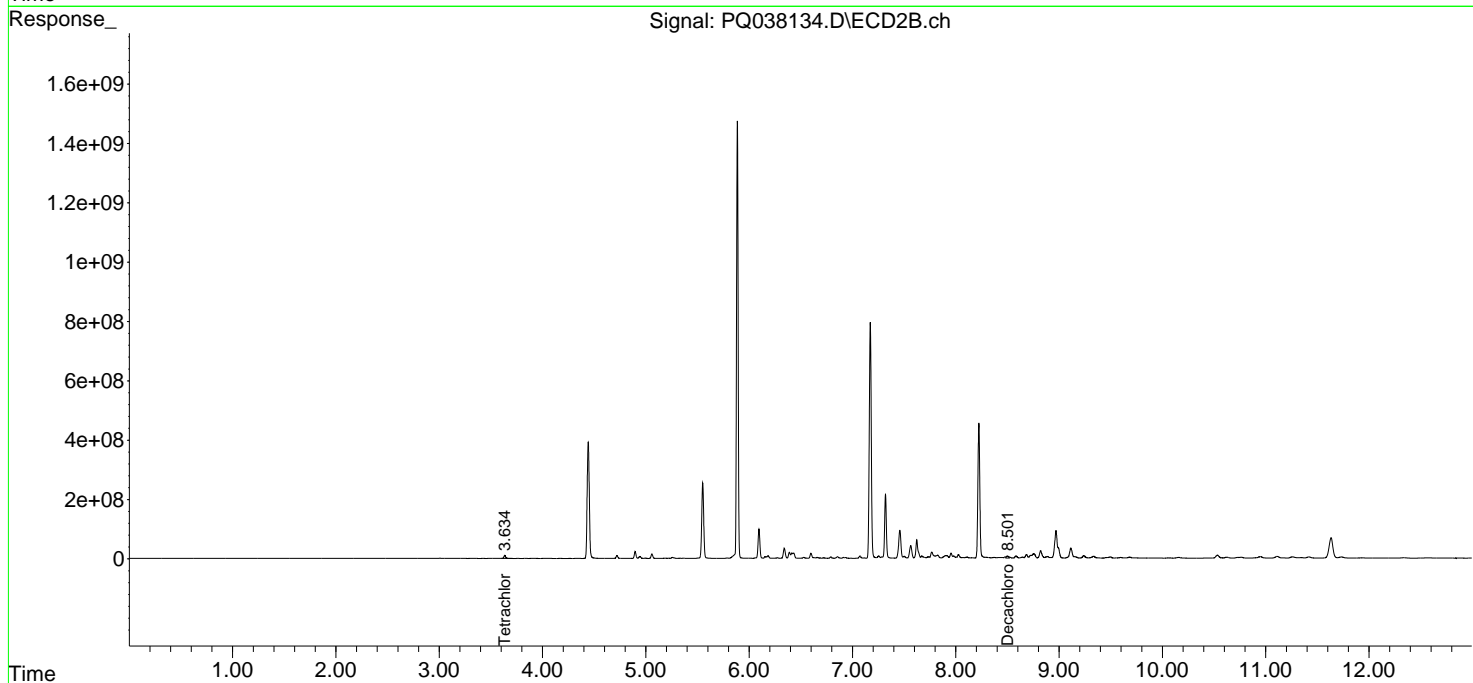
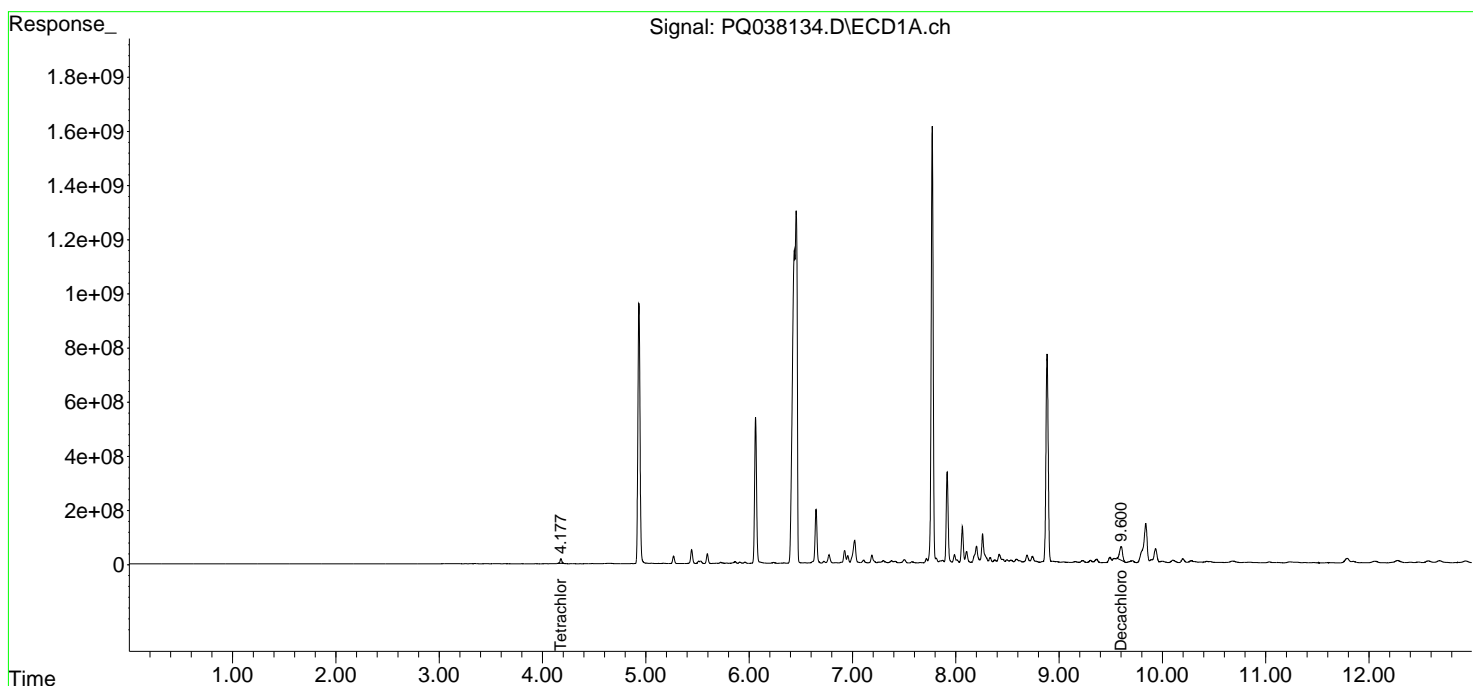
Data Path : Z:\pestpcbsrv\HPCHEM1\ECD_Q\Data\PQ032219\
 Data File : PQ038134.D
 Signal(s) : Signal #1: ECD1A.ch Signal #2: ECD2B.ch
 Acq On : 22 Mar 2019 10:00
 Operator : SM\SJ
 Sample : K1989-05RE
 Misc :
 ALS Vial : 21 Sample Multiplier: 1

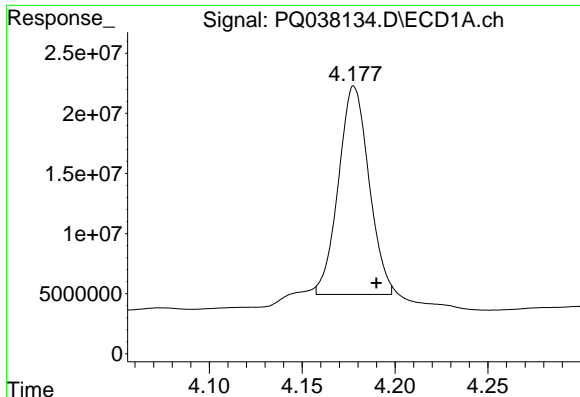
Instrument :
 ECD_Q
ClientSampleId :
 PEDESTALS-1-11RE

Manual Integrations
APPROVED
 Sohil
 3/22/2019 1:53:48 PM

Integration File signal 1: autoint1.e
 Integration File signal 2: autoint2.e
 Quant Time: Mar 22 11:35:54 2019
 Quant Method : Z:\pestpcbsrv\HPCHEM1\ECD_Q\Method\PQ032019.M
 Quant Title : GC EXTRACTABLES
 QLast Update : Wed Mar 20 09:51:59 2019
 Response via : Initial Calibration
 Integrator: ChemStation

Volume Inj. : 2 µl
 Signal #1 Phase : ZB-MR1 Signal #2 Phase: ZB-MR2
 Signal #1 Info : 30Mx0.32mmx 0.50µm Signal #2 Info : 30M x 0.32mm x 0.25µm

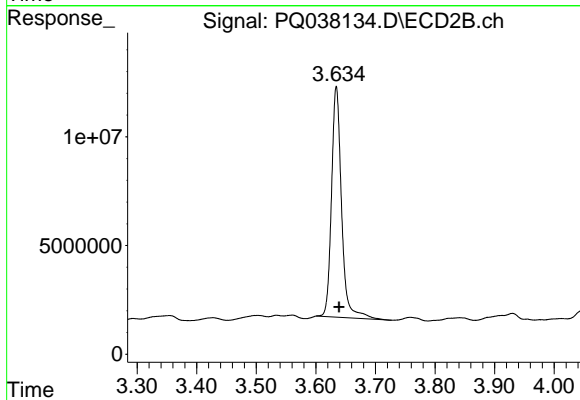




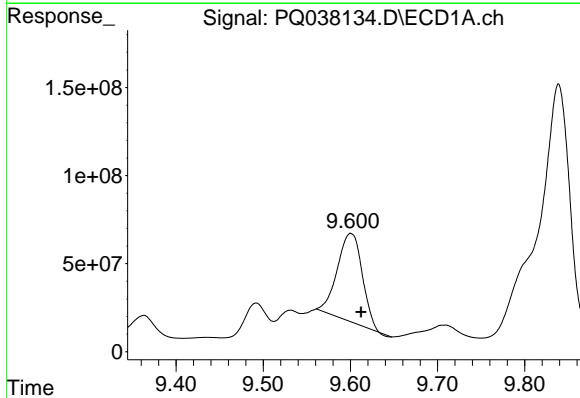
#1 Tetrachloro-m-xylene
 R.T.: 4.177 min
 Delta R.T.: -0.013 min
 Response: 197460041
 Conc: 33.94 ng/ml m

Instrument :
 ECD_Q
ClientSampleId :
 PEDESTALS-1-11RE

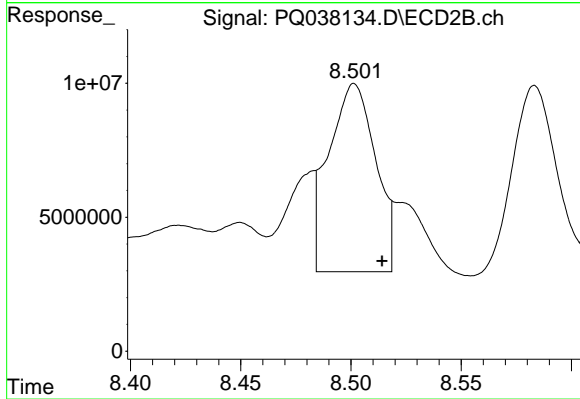
Manual Integrations
APPROVED
 Sohil
 3/22/2019 1:53:48 PM



#1 Tetrachloro-m-xylene
 R.T.: 3.634 min
 Delta R.T.: -0.005 min
 Response: 124352047
 Conc: 40.26 ng/ml



#2 Decachlorobiphenyl
 R.T.: 9.600 min
 Delta R.T.: -0.012 min
 Response: 992966888
 Conc: 205.95 ng/ml



#2 Decachlorobiphenyl
 R.T.: 8.501 min
 Delta R.T.: -0.013 min
 Response: 103283752
 Conc: 46.13 ng/ml m