

Data Path : Z:\pestpcbsrv\HPCHEM1\ECD_Q\Data\PQ032319\
 Data File : PQ038165.D
 Signal(s) : Signal #1: ECD1A.ch Signal #2: ECD2B.ch
 Acq On : 22 Mar 2019 21:09
 Operator : SM\SJ
 Sample : I.BLK
 Misc :
 ALS Vial : 2 Sample Multiplier: 1

Instrument :
 ECD_Q
ClientSampled :
 I.BLK

Manual Integrations
APPROVED
 Sohil
 3/25/2019 9:22:57 AM

Integration File signal 1: autoint1.e
 Integration File signal 2: autoint2.e
 Quant Time: Mar 22 22:58:34 2019
 Quant Method : Z:\pestpcbsrv\HPCHEM1\ECD_Q\Method\PQ032019.M
 Quant Title : GC EXTRACTABLES
 QLast Update : Wed Mar 20 09:51:59 2019
 Response via : Initial Calibration
 Integrator: ChemStation

Volume Inj. : 2 µl
 Signal #1 Phase : ZB-MR1 Signal #2 Phase: ZB-MR2
 Signal #1 Info : 30Mx0.32mmx 0.50µ Signal #2 Info : 30M x 0.32mm x 0.25µm

Compound	RT#1	RT#2	Resp#1	Resp#2	ng/ml	ng/ml

System Monitoring Compounds						
1) SA Tetrachlo...	4.170	3.630	120.3E6	63414625	20.679	20.532
2) SA Decachlor...	9.575	8.497	115.9E6	55310088	24.035m	24.706

Target Compounds

(f)=RT Delta > 1/2 Window (#)=Amounts differ by > 25% (m)=manual int.

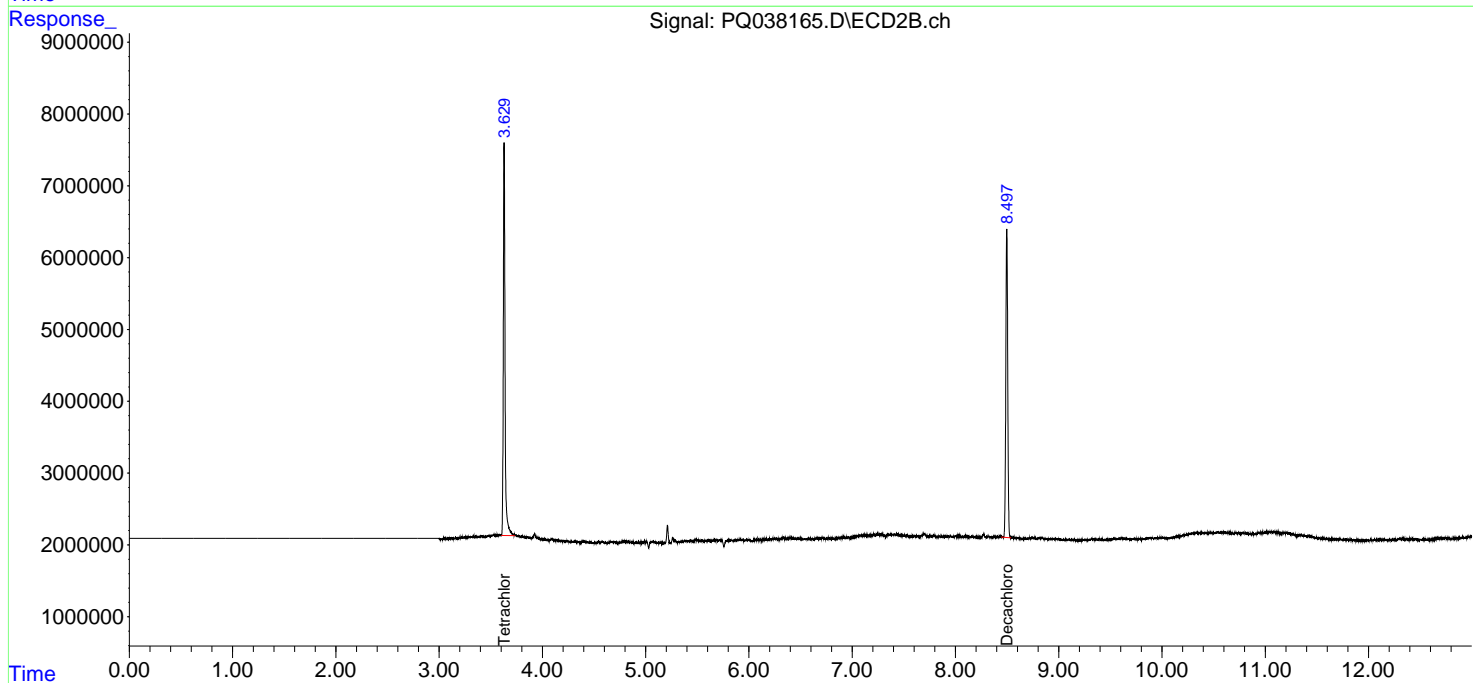
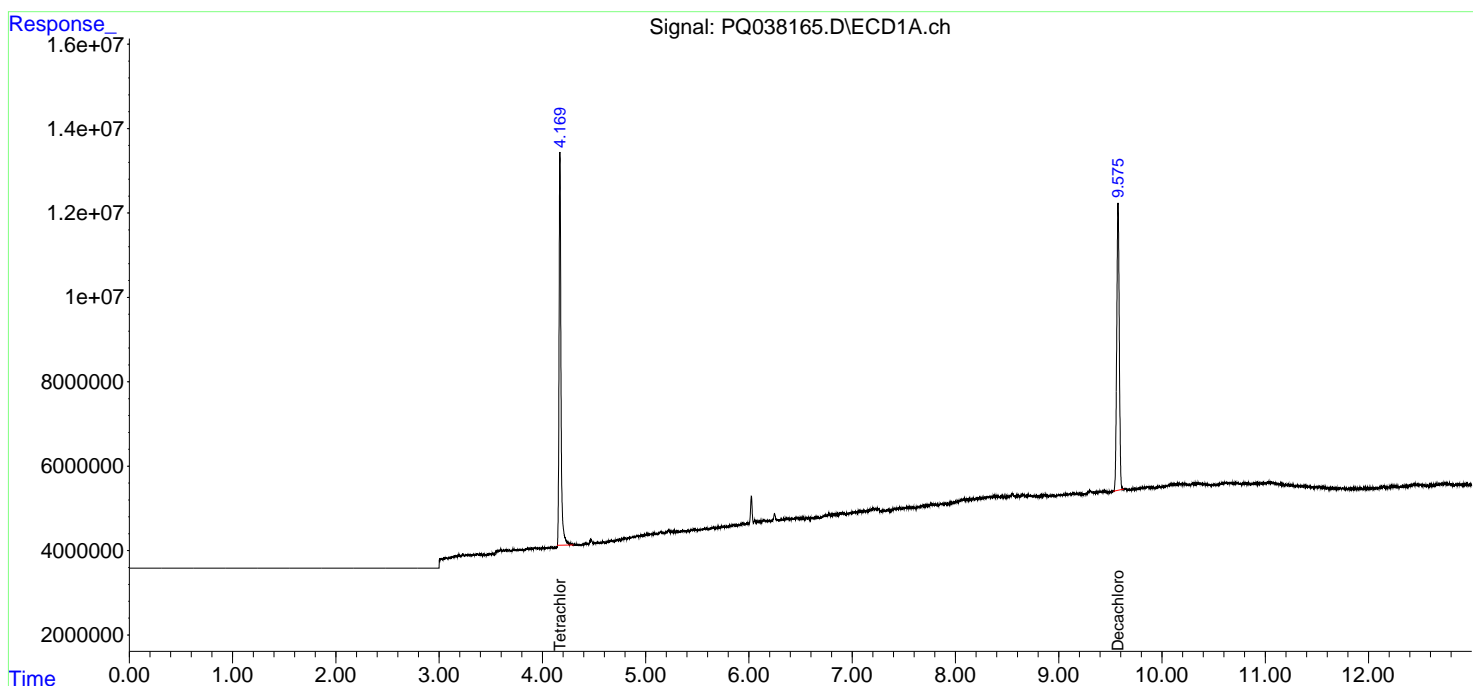
Data Path : Z:\pestpcbsrv\HPCHEM1\ECD_Q\Data\PQ032319\
 Data File : PQ038165.D
 Signal(s) : Signal #1: ECD1A.ch Signal #2: ECD2B.ch
 Acq On : 22 Mar 2019 21:09
 Operator : SM\SJ
 Sample : I.BLK
 Misc :
 ALS Vial : 2 Sample Multiplier: 1

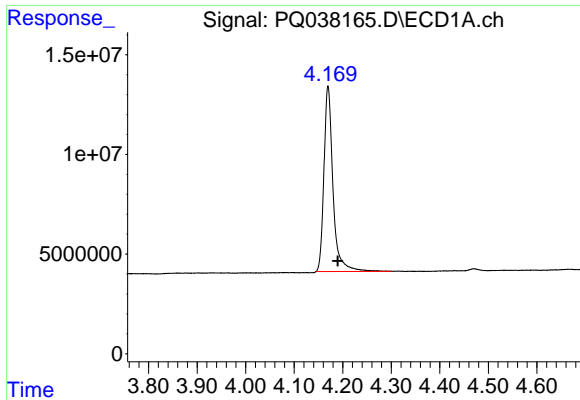
Instrument :
 ECD_Q
ClientSampled :
 I.BLK

Manual Integrations
APPROVED
 Sohil
 3/25/2019 9:22:57 AM

Integration File signal 1: autoint1.e
 Integration File signal 2: autoint2.e
 Quant Time: Mar 22 22:58:34 2019
 Quant Method : Z:\pestpcbsrv\HPCHEM1\ECD_Q\Method\PQ032019.M
 Quant Title : GC EXTRACTABLES
 QLast Update : Wed Mar 20 09:51:59 2019
 Response via : Initial Calibration
 Integrator: ChemStation

Volume Inj. : 2 µl
 Signal #1 Phase : ZB-MR1 Signal #2 Phase: ZB-MR2
 Signal #1 Info : 30Mx0.32mmx 0.50µm Signal #2 Info : 30M x 0.32mm x 0.25µm

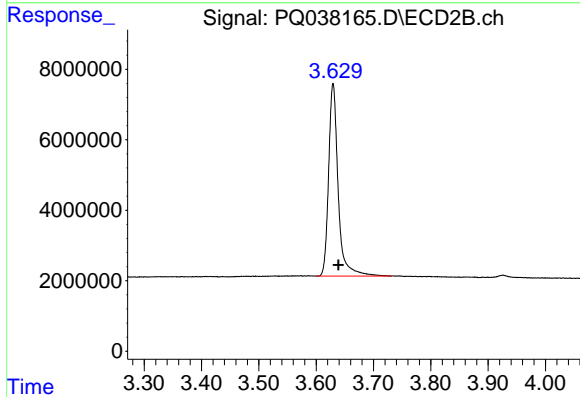




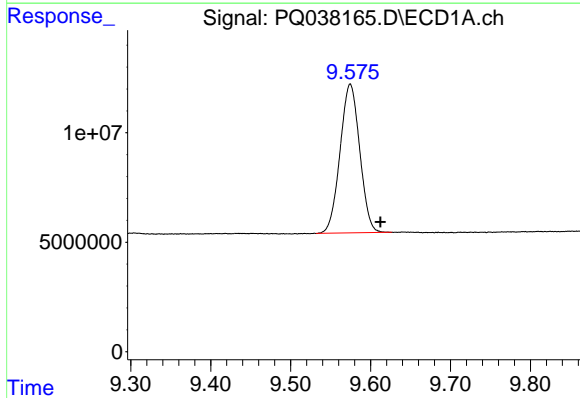
#1 Tetrachloro-m-xylene
 R.T.: 4.170 min
 Delta R.T.: -0.020 min
 Response: 120323869
 Conc: 20.68 ng/ml

Instrument :
 ECD_Q
 ClientSampled :
 I.BLK

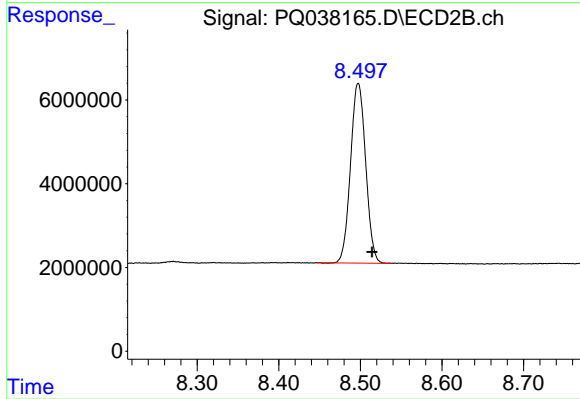
Manual Integrations
 APPROVED
 Sohil
 3/25/2019 9:22:57 AM



#1 Tetrachloro-m-xylene
 R.T.: 3.630 min
 Delta R.T.: -0.010 min
 Response: 63414625
 Conc: 20.53 ng/ml



#2 Decachlorobiphenyl
 R.T.: 9.575 min
 Delta R.T.: -0.038 min
 Response: 115879028
 Conc: 24.03 ng/ml m



#2 Decachlorobiphenyl
 R.T.: 8.497 min
 Delta R.T.: -0.017 min
 Response: 55310088
 Conc: 24.71 ng/ml