

Data Path : Z:\pestpcbsrv\HPCHEM1\ECD\_Q\Data\PQ032419\  
 Data File : PQ038226.D  
 Signal(s) : Signal #1: ECD1A.ch Signal #2: ECD2B.ch  
 Acq On : 23 Mar 2019 21:19  
 Operator : SM\SJ  
 Sample : AR1262ICC100  
 Misc :  
 ALS Vial : 33 Sample Multiplier: 1

Instrument :  
 ECD\_Q  
 ClientSampleId :

Integration File signal 1: autoint1.e  
 Integration File signal 2: autoint2.e  
 Quant Time: Mar 25 05:09:53 2019  
 Quant Method : Z:\pestpcbsrv\HPCHEM1\ECD\_Q\Method\PQ032419CLP.M  
 Quant Title : GC EXTRACTABLES  
 QLast Update : Mon Mar 25 05:09:09 2019  
 Response via : Initial Calibration  
 Integrator: ChemStation

Volume Inj. : 1 µl  
 Signal #1 Phase : ZB MR1 Signal #2 Phase: ZB MR2  
 Signal #1 Info : 30Mx0.32mmx 0.5µm Signal #2 Info : 30M x 0.32mm x 0.25µm

Compound	RT#1	RT#2	Resp#1	Resp#2	ng/ml	ng/ml
-----						
System Monitoring Compounds						
1) SA Tetrachlo...	4.730	4.016	22662267	10367972	4.940	5.266
2) SA Decachlor...	10.691	9.175	64857000	27808532	10.504	10.425
Target Compounds						
36) L8 AR-1262-1	8.145	7.182	42718878	22748720	108.331	105.558
37) L8 AR-1262-2	8.728	7.685	72957352	41116732	102.983	106.864
38) L8 AR-1262-3	9.063	7.973	49752964	15882323	104.124	108.722
39) L8 AR-1262-4	9.159	8.037	39941367	29740006	105.678	107.174
40) L8 AR-1262-5	9.874	8.561	25042385	13119861	101.880	114.388
-----						

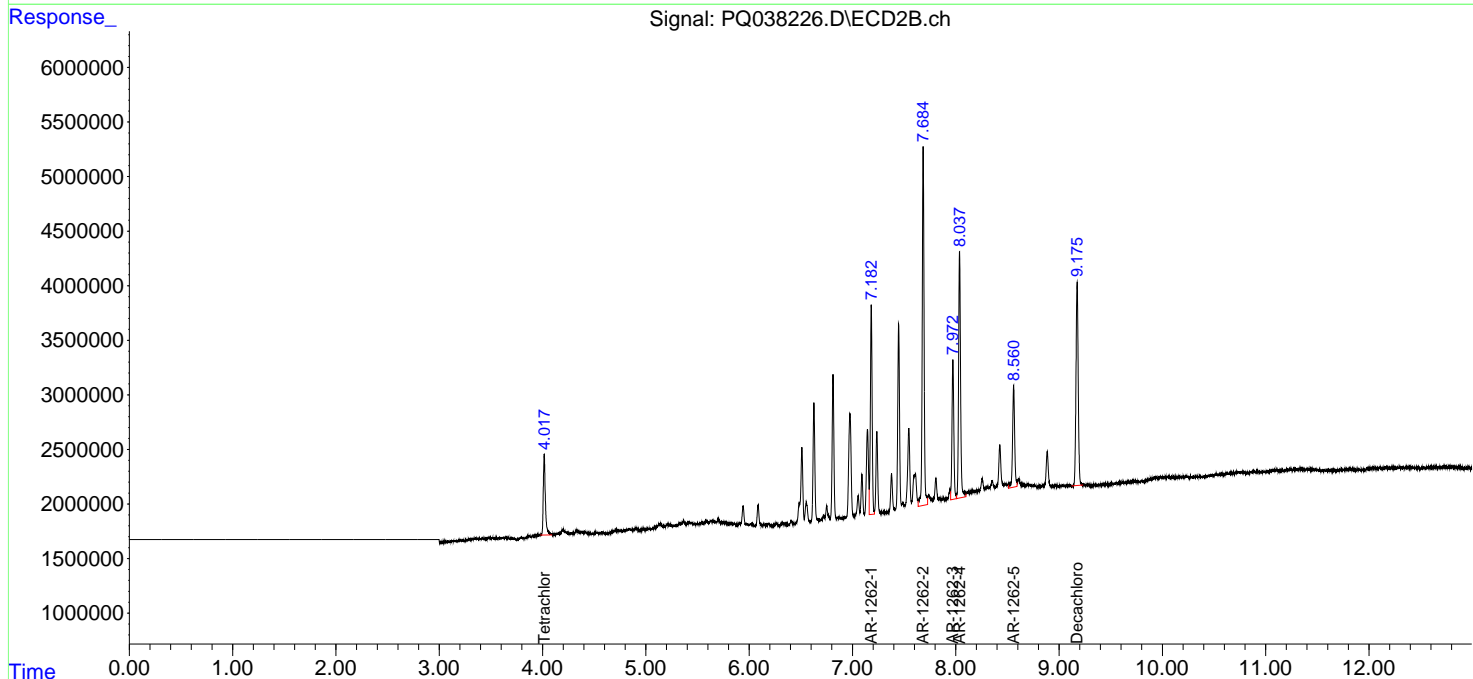
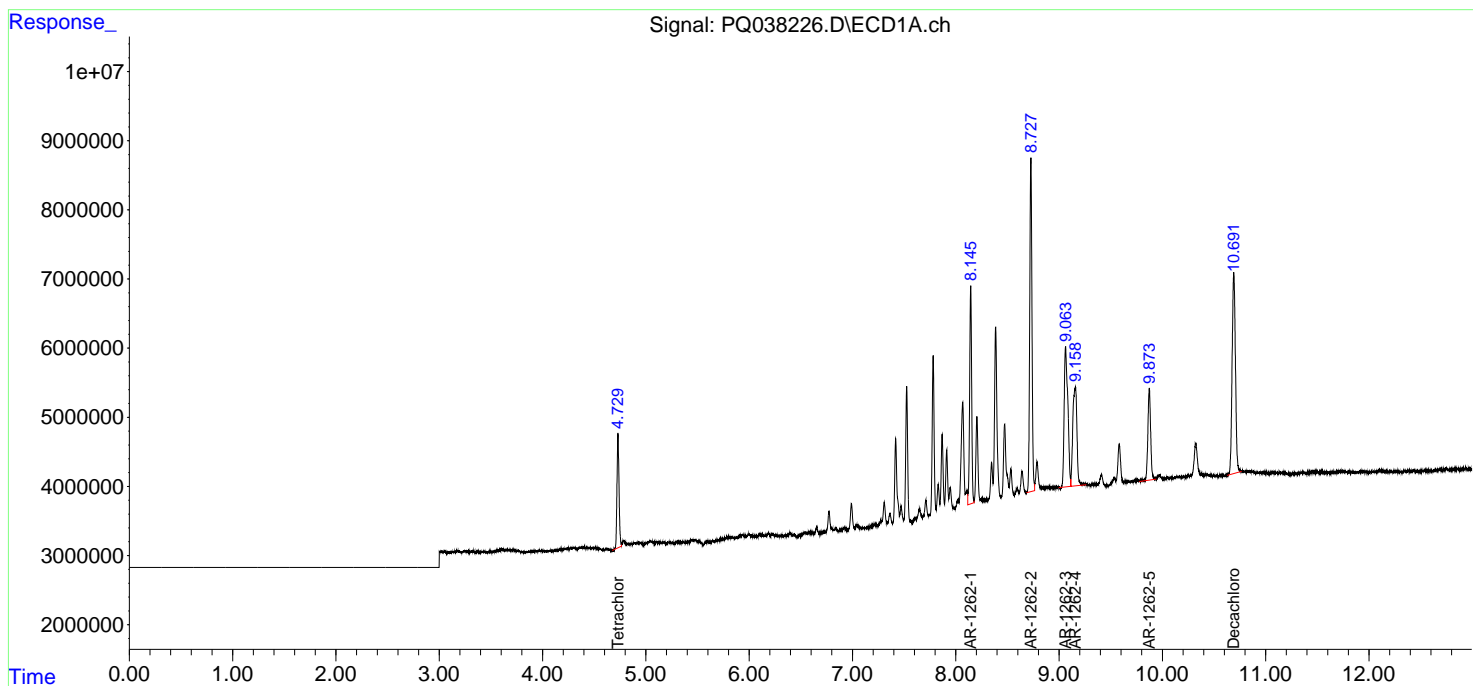
(f)=RT Delta > 1/2 Window (#)=Amounts differ by > 25% (m)=manual int.

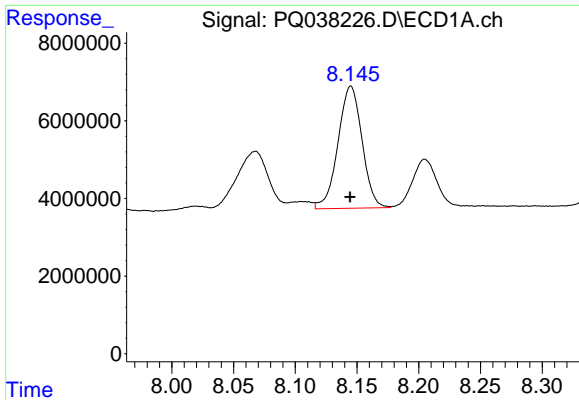
Data Path : Z:\pestpcbsrv\HPCHEM1\ECD\_Q\Data\PQ032419\  
 Data File : PQ038226.D  
 Signal(s) : Signal #1: ECD1A.ch Signal #2: ECD2B.ch  
 Acq On : 23 Mar 2019 21:19  
 Operator : SM\SJ  
 Sample : AR1262ICC100  
 Misc :  
 ALS Vial : 33 Sample Multiplier: 1

Instrument :  
 ECD\_Q  
 ClientSampled :

Integration File signal 1: autoint1.e  
 Integration File signal 2: autoint2.e  
 Quant Time: Mar 25 05:09:53 2019  
 Quant Method : Z:\pestpcbsrv\HPCHEM1\ECD\_Q\Method\PQ032419CLP.M  
 Quant Title : GC EXTRACTABLES  
 QLast Update : Mon Mar 25 05:09:09 2019  
 Response via : Initial Calibration  
 Integrator: ChemStation

Volume Inj. : 1 µl  
 Signal #1 Phase : ZB MR1 Signal #2 Phase: ZB MR2  
 Signal #1 Info : 30Mx0.32mmx 0.5µm Signal #2 Info : 30M x 0.32mm x 0.25µm

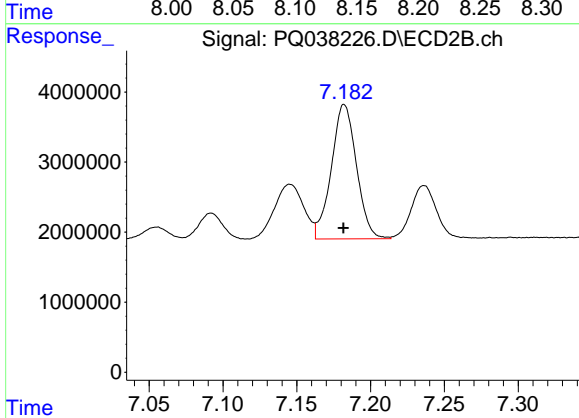




#36 AR-1262-1

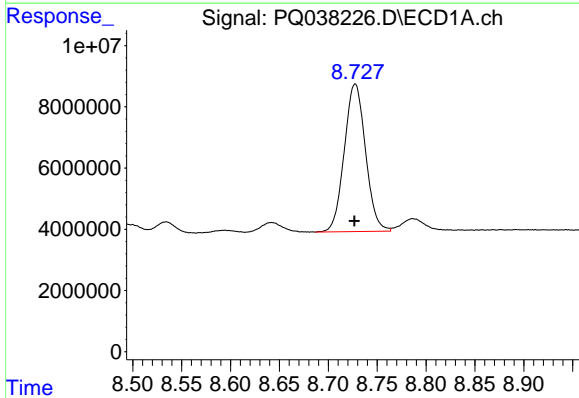
R.T.: 8.145 min  
Delta R.T.: 0.000 min  
Response: 42718878  
Conc: 108.33 ng/ml

Instrument :  
ECD\_Q  
ClientSampleId :



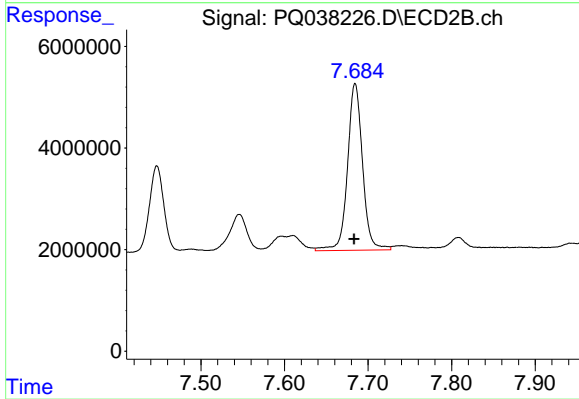
#36 AR-1262-1

R.T.: 7.182 min  
Delta R.T.: 0.000 min  
Response: 22748720  
Conc: 105.56 ng/ml



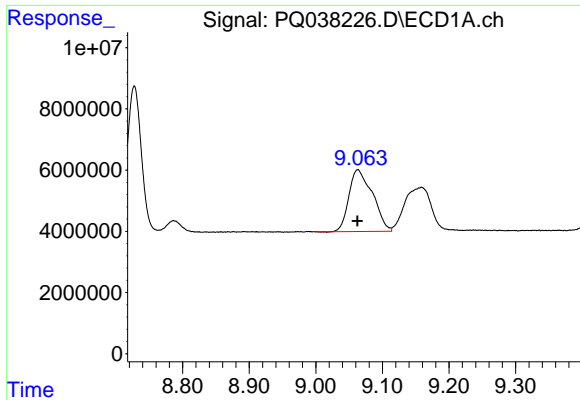
#37 AR-1262-2

R.T.: 8.728 min  
Delta R.T.: 0.000 min  
Response: 72957352  
Conc: 102.98 ng/ml



#37 AR-1262-2

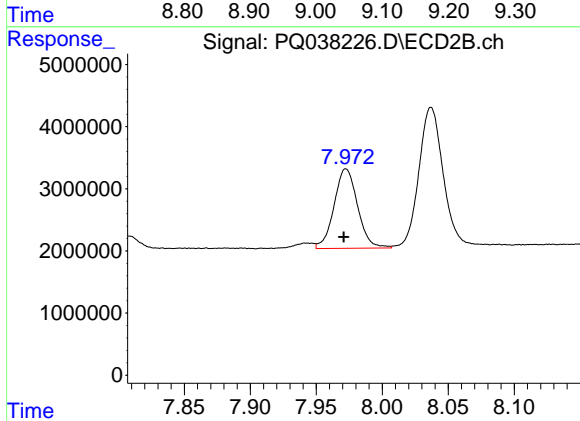
R.T.: 7.685 min  
Delta R.T.: 0.001 min  
Response: 41116732  
Conc: 106.86 ng/ml



#38 AR-1262-3

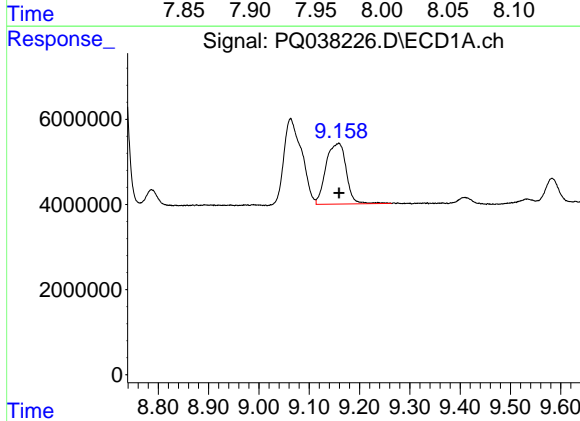
R.T.: 9.063 min  
 Delta R.T.: 0.000 min  
 Response: 49752964  
 Conc: 104.12 ng/ml

Instrument :  
 ECD\_Q  
 ClientSampleId :



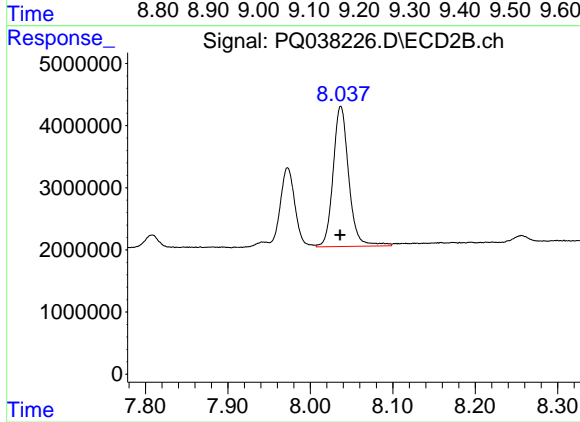
#38 AR-1262-3

R.T.: 7.973 min  
 Delta R.T.: 0.002 min  
 Response: 15882323  
 Conc: 108.72 ng/ml



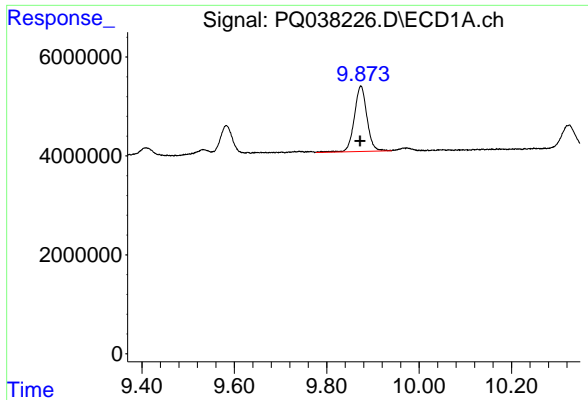
#39 AR-1262-4

R.T.: 9.159 min  
 Delta R.T.: 0.000 min  
 Response: 39941367  
 Conc: 105.68 ng/ml



#39 AR-1262-4

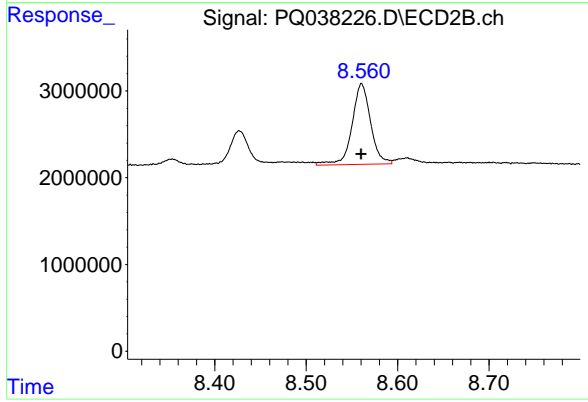
R.T.: 8.037 min  
 Delta R.T.: 0.001 min  
 Response: 29740006  
 Conc: 107.17 ng/ml



#40 AR-1262-5

R.T.: 9.874 min  
Delta R.T.: 0.002 min  
Response: 25042385  
Conc: 101.88 ng/ml

Instrument :  
ECD\_Q  
ClientSampleId :



#40 AR-1262-5

R.T.: 8.561 min  
Delta R.T.: 0.000 min  
Response: 13119861  
Conc: 114.39 ng/ml