

Data Path : Z:\pestpcbsrv\HPCHEM1\ECD\_Q\Data\PQ032422\  
 Data File : PQ056803.D  
 Signal(s) : Signal #1: ECD1A.ch Signal #2: ECD2B.ch  
 Acq On : 24 Mar 2022 17:21  
 Operator : YP\AJ  
 Sample : AR1660CCC400  
 Misc :  
 ALS Vial : 3 Sample Multiplier: 1

Instrument :  
 ECD\_Q  
 ClientSampleId :

Integration File signal 1: autoint1.e  
 Integration File signal 2: autoint2.e  
 Quant Time: Mar 25 06:27:48 2022  
 Quant Method : Z:\pestpcbsrv\HPCHEM1\ECD\_Q\Method\PQ032322CLP.M  
 Quant Title : GC EXTRACTABLES  
 QLast Update : Thu Mar 24 09:20:48 2022  
 Response via : Initial Calibration  
 Integrator: ChemStation

Volume Inj. : 1 µl  
 Signal #1 Phase : ZB MR1 Signal #2 Phase: ZB MR2  
 Signal #1 Info : 30Mx0.32mmx 0.5µm Signal #2 Info : 30M x 0.32mm x 0.25µm

Compound	RT#1	RT#2	Resp#1	Resp#2	ng/ml	ng/ml
System Monitoring Compounds						
1) SA Tetrachlo...	4.529	3.747	456.7E6	260.9E6	25.642	24.323
2) SA Decachlor...	10.298	8.684	627.2E6	432.0E6	42.955	41.877
Target Compounds						
3) L1 AR-1016-1	5.707	4.815	211.3E6	158.3E6	498.291	475.489
4) L1 AR-1016-2	5.729	4.833	434.4E6	281.6E6	507.857	470.289
5) L1 AR-1016-3	5.790	5.006	283.1E6	130.2E6	510.598	484.230
6) L1 AR-1016-4	5.892	5.044	222.9E6	108.1E6	521.692	474.634
7) L1 AR-1016-5	6.178	5.255	198.1E6	130.4E6	501.453	454.110
8) L2 AR-1221-1	4.744	3.956	22876827	14438133	131.270	126.542
9) L2 AR-1221-2	4.834	4.042	31082265	18510644	253.176	233.816
10) L2 AR-1221-3	4.911	4.116	139.3E6	85023562	333.437	306.539
11) L3 AR-1232-1	4.911	4.116	139.3E6	85023562	396.960	373.781
12) L3 AR-1232-2	5.434	4.833	225.1E6	281.6E6	895.677	1195.656 #
13) L3 AR-1232-3	5.729	5.006	434.4E6	130.2E6	1216.835	1121.157
14) L3 AR-1232-4	5.892	5.086	222.9E6	129.3E6	1216.505	1326.335
15) L3 AR-1232-5	5.972	5.255	178.0E6	130.4E6	622.409	1268.832 #
16) L4 AR-1242-1	5.707	4.815	211.3E6	158.3E6	542.797	555.597
17) L4 AR-1242-2	5.729	4.833	434.4E6	281.6E6	566.302	556.868
18) L4 AR-1242-3	5.790	5.006	283.1E6	130.2E6	558.184	571.876
19) L4 AR-1242-4	5.892	5.086	222.9E6	129.3E6	571.393	565.504
20) L4 AR-1242-5	6.626	5.600	34367785	96164837	86.947	321.993 #
21) L5 AR-1248-1	5.707	4.815	211.3E6	158.3E6	719.688	709.084
22) L5 AR-1248-2	5.972	5.044	178.0E6	108.1E6	331.557	324.169
23) L5 AR-1248-3	6.178	5.086	198.1E6	129.3E6	315.091	369.028
24) L5 AR-1248-4	6.586	5.255	36269236	130.4E6	55.444	312.038 #
25) L5 AR-1248-5	6.626	5.645	34367785	15628840	49.479	34.870 #
26) L6 AR-1254-1	6.552	5.600	123.0E6	96164837	191.023	144.210
27) L6 AR-1254-2	6.769	5.746	136.0E6	85325382	136.375	155.400
28) L6 AR-1254-3	7.140	6.156	78169135	168.6E6	70.581	181.393 #
29) L6 AR-1254-4	7.427	6.372	47326698	19850368	64.602	29.353 #
30) L6 AR-1254-5	7.842	6.780	422.6E6	314.8E6	499.578	385.357
31) L7 AR-1260-1	7.298	6.271	302.8E6	237.5E6	472.597	434.845
32) L7 AR-1260-2	7.554	6.457	343.5E6	289.9E6	466.016	435.572
33) L7 AR-1260-3	7.842	6.608	422.6E6	269.4E6	453.100	435.337
34) L7 AR-1260-4	8.142	7.073	313.4E6	227.9E6	453.892	431.082
35) L7 AR-1260-5	8.471	7.312	615.9E6	563.4E6	443.682	430.391
36) L8 AR-1262-1	7.911	6.780	275.3E6	314.8E6	274.632	743.436 #
37) L8 AR-1262-2	8.471	7.312	615.9E6	563.4E6	335.541	352.801
38) L8 AR-1262-3	8.782	7.592	144.0E6	119.0E6	178.368	185.522
39) L8 AR-1262-4	8.862	7.655	264.1E6	405.3E6	440.979	343.540
40) L8 AR-1262-5	9.549	8.146	184.9E6	136.5E6	274.548	271.803
41) L9 AR-1268-1	8.782	7.592	144.0E6	119.0E6	66.300	64.511

Data Path : Z:\pestpcbsrv\HPCHEM1\ECD\_Q\Data\PQ032422\  
 Data File : PQ056803.D  
 Signal(s) : Signal #1: ECD1A.ch Signal #2: ECD2B.ch  
 Acq On : 24 Mar 2022 17:21  
 Operator : YP\AJ  
 Sample : AR1660CCC400  
 Misc :  
 ALS Vial : 3 Sample Multiplier: 1

Instrument :  
 ECD\_Q  
 ClientSampleId :

Integration File signal 1: autoint1.e  
 Integration File signal 2: autoint2.e  
 Quant Time: Mar 25 06:27:48 2022  
 Quant Method : Z:\pestpcbsrv\HPCHEM1\ECD\_Q\Method\PQ032322CLP.M  
 Quant Title : GC EXTRACTABLES  
 QLast Update : Thu Mar 24 09:20:48 2022  
 Response via : Initial Calibration  
 Integrator: ChemStation

Volume Inj. : 1 µl  
 Signal #1 Phase : ZB MR1 Signal #2 Phase: ZB MR2  
 Signal #1 Info : 30Mx0.32mmx 0.5µm Signal #2 Info : 30M x 0.32mm x 0.25µm

	Compound	RT#1	RT#2	Resp#1	Resp#2	ng/ml	ng/ml
42)	L9 AR-1268-2	8.862	7.655	264.1E6	405.3E6	125.670	240.967 #
43)	L9 AR-1268-3	9.106	7.859	8634513	5622198	4.823	4.394
44)	L9 AR-1268-4	9.549	8.146	184.9E6	136.5E6	257.034	247.843
45)	L9 AR-1268-5	9.965	8.435	55074709	35177740	9.322	7.876

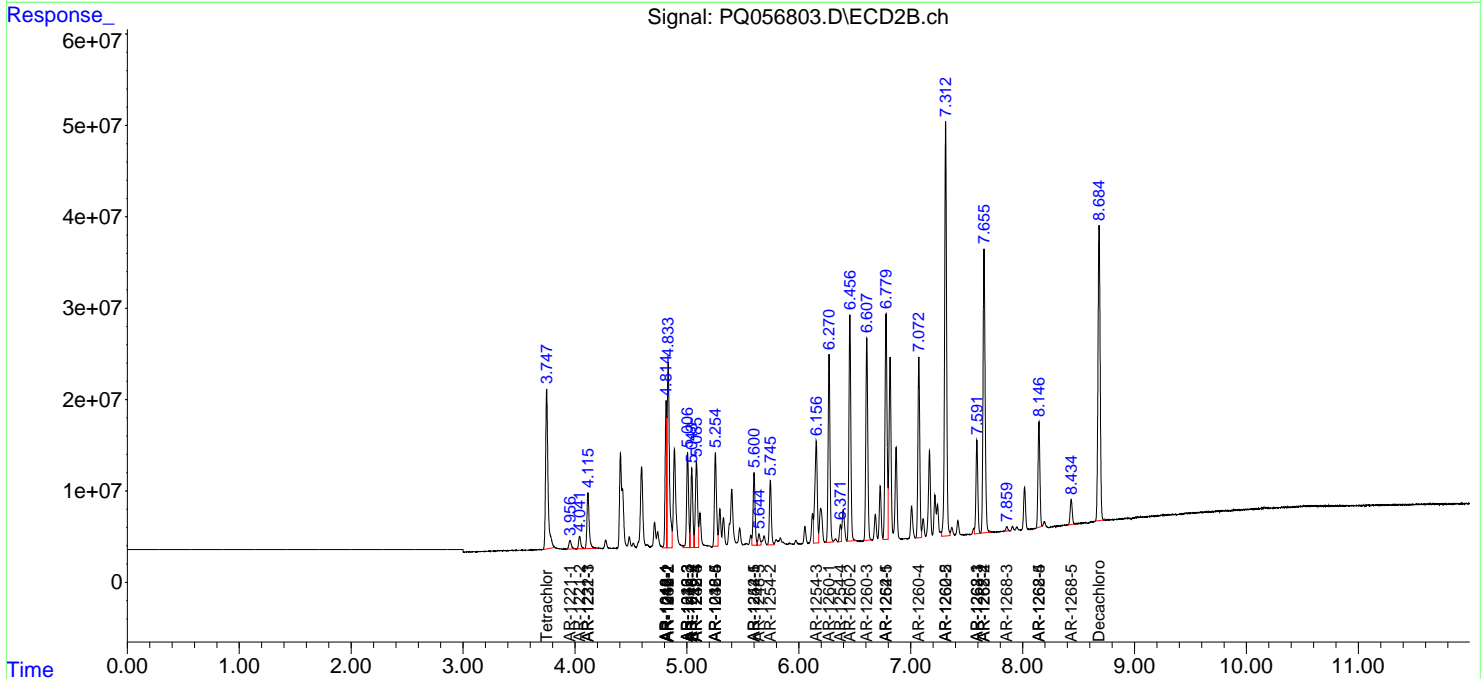
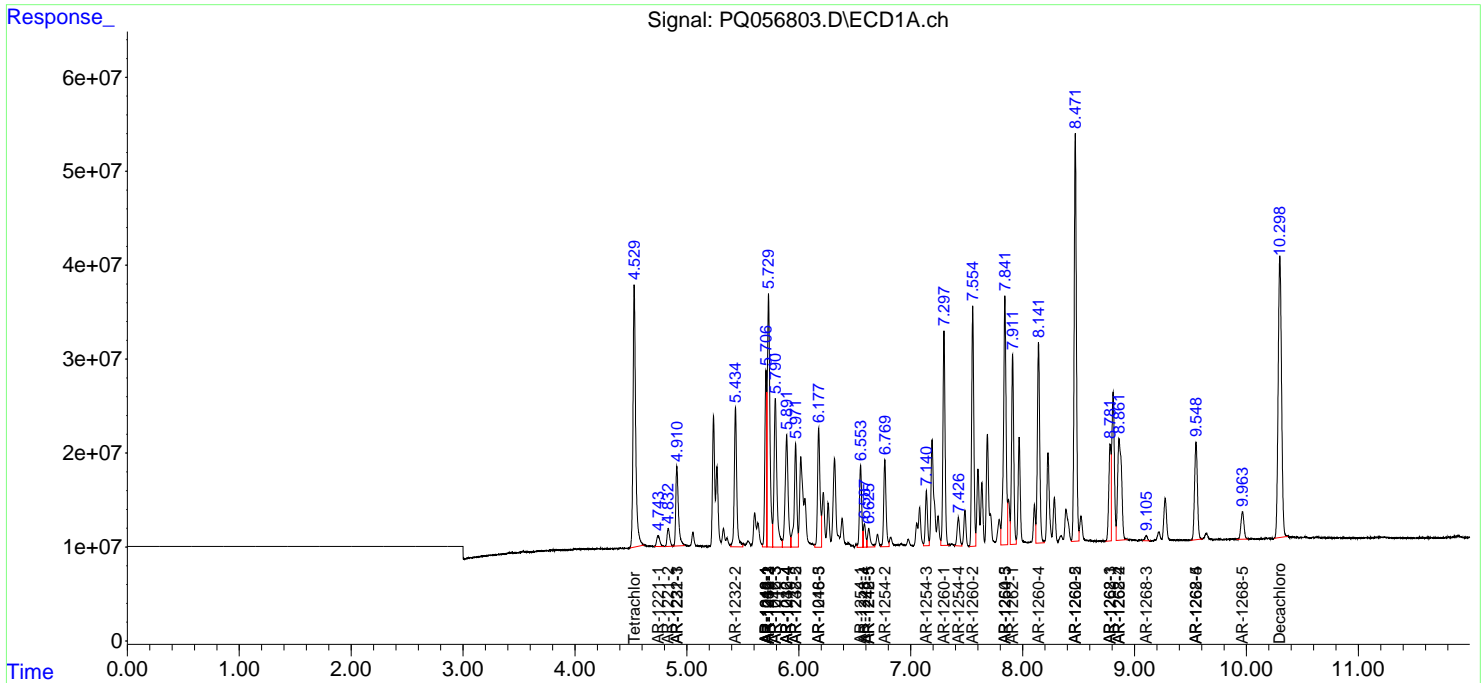
(f)=RT Delta > 1/2 Window (#)=Amounts differ by > 25% (m)=manual int.

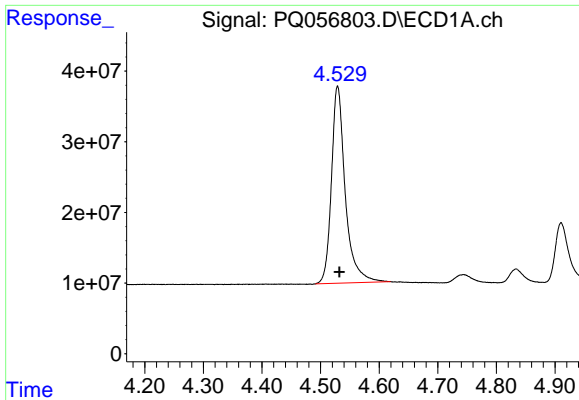
Data Path : Z:\pestpcbsrv\HPCHEM1\ECD\_Q\Data\PQ032422\  
 Data File : PQ056803.D  
 Signal(s) : Signal #1: ECD1A.ch Signal #2: ECD2B.ch  
 Acq On : 24 Mar 2022 17:21  
 Operator : YP\AJ  
 Sample : AR1660CCC400  
 Misc :  
 ALS Vial : 3 Sample Multiplier: 1

Instrument :  
 ECD\_Q  
 ClientSampleId :

Integration File signal 1: autoint1.e  
 Integration File signal 2: autoint2.e  
 Quant Time: Mar 25 06:27:48 2022  
 Quant Method : Z:\pestpcbsrv\HPCHEM1\ECD\_Q\Method\PQ032322CLP.M  
 Quant Title : GC EXTRACTABLES  
 QLast Update : Thu Mar 24 09:20:48 2022  
 Response via : Initial Calibration  
 Integrator: ChemStation

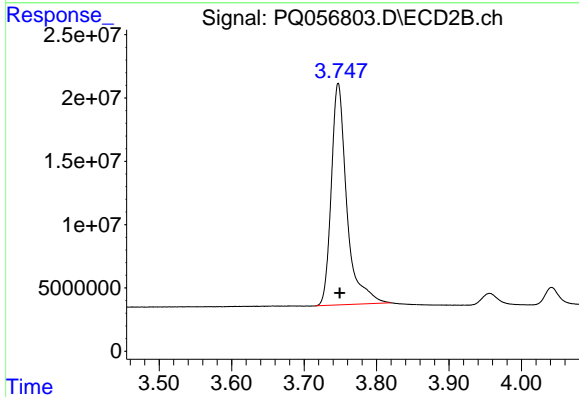
Volume Inj. : 1 µl  
 Signal #1 Phase : ZB MR1 Signal #2 Phase: ZB MR2  
 Signal #1 Info : 30Mx0.32mmx 0.5µm Signal #2 Info : 30M x 0.32mm x 0.25µm



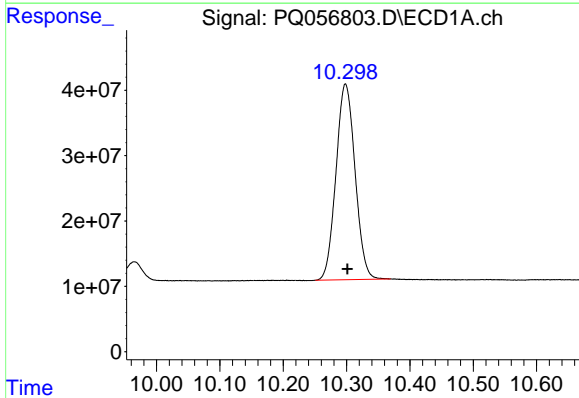


#1 Tetrachloro-m-xylene  
R.T.: 4.529 min  
Delta R.T.: -0.003 min  
Response: 456716922  
Conc: 25.64 ng/ml

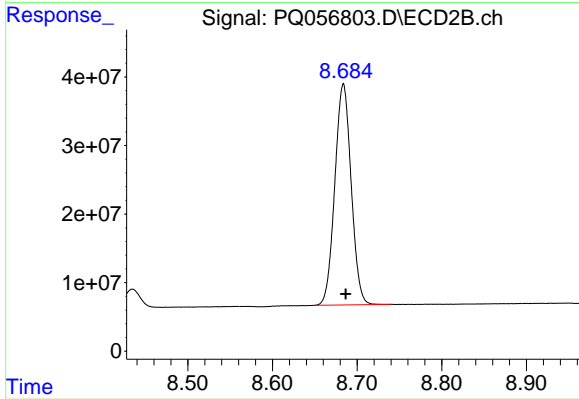
Instrument :  
ECD\_Q  
ClientSampleId :



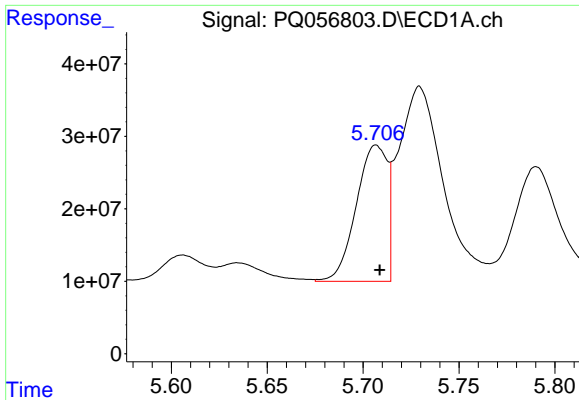
#1 Tetrachloro-m-xylene  
R.T.: 3.747 min  
Delta R.T.: -0.002 min  
Response: 260948756  
Conc: 24.32 ng/ml



#2 Decachlorobiphenyl  
R.T.: 10.298 min  
Delta R.T.: -0.003 min  
Response: 627211246  
Conc: 42.96 ng/ml



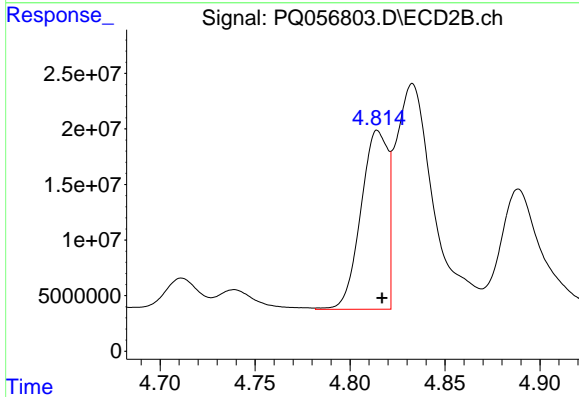
#2 Decachlorobiphenyl  
R.T.: 8.684 min  
Delta R.T.: -0.003 min  
Response: 432034373  
Conc: 41.88 ng/ml



#3 AR-1016-1

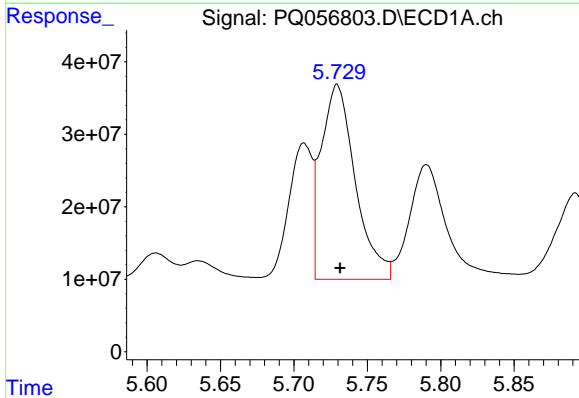
R.T.: 5.707 min  
 Delta R.T.: -0.002 min  
 Response: 211345864  
 Conc: 498.29 ng/ml

Instrument :  
 ECD\_Q  
 ClientSampleId :



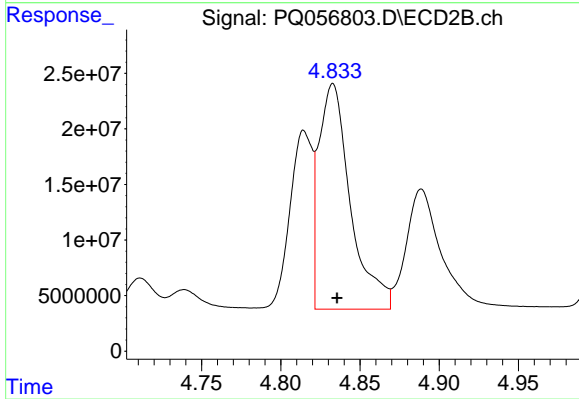
#3 AR-1016-1

R.T.: 4.815 min  
 Delta R.T.: -0.002 min  
 Response: 158266056  
 Conc: 475.49 ng/ml



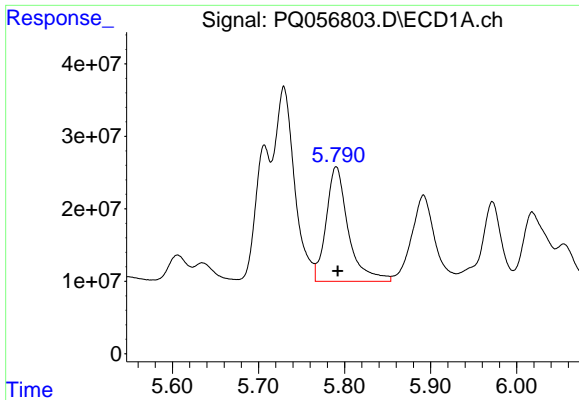
#4 AR-1016-2

R.T.: 5.729 min  
 Delta R.T.: -0.002 min  
 Response: 434374876  
 Conc: 507.86 ng/ml



#4 AR-1016-2

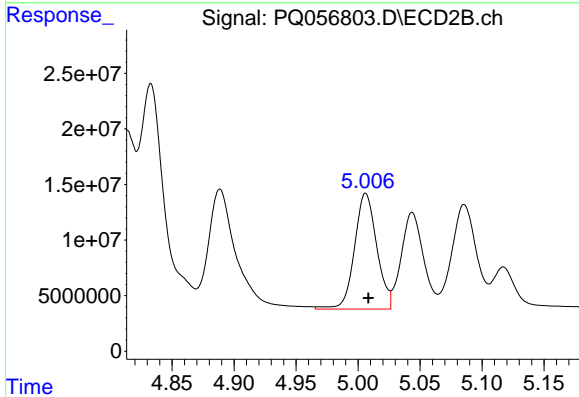
R.T.: 4.833 min  
 Delta R.T.: -0.003 min  
 Response: 281608190  
 Conc: 470.29 ng/ml



#5 AR-1016-3

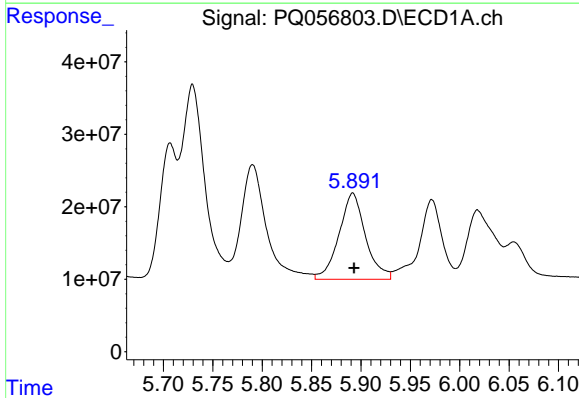
R.T.: 5.790 min  
 Delta R.T.: -0.002 min  
 Response: 283059659  
 Conc: 510.60 ng/ml

Instrument :  
 ECD\_Q  
 ClientSampleId :



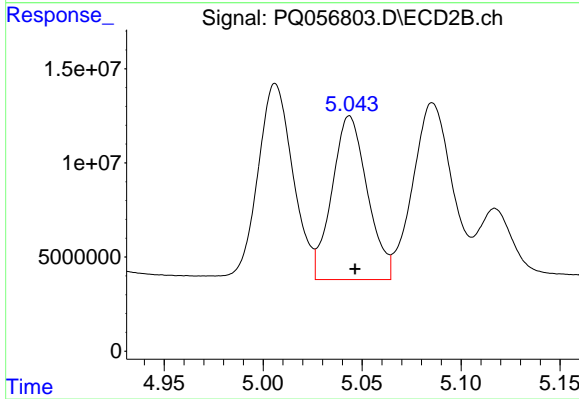
#5 AR-1016-3

R.T.: 5.006 min  
 Delta R.T.: -0.002 min  
 Response: 130179305  
 Conc: 484.23 ng/ml



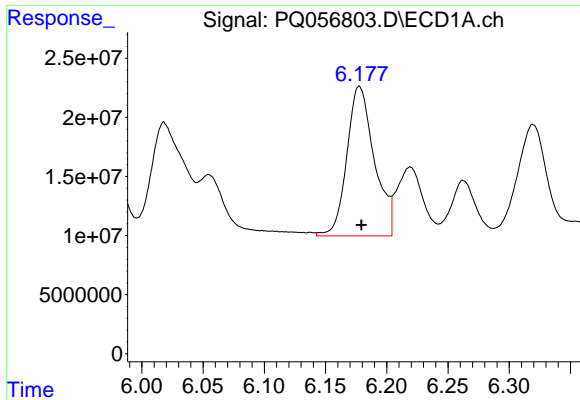
#6 AR-1016-4

R.T.: 5.892 min  
 Delta R.T.: -0.001 min  
 Response: 222899235  
 Conc: 521.69 ng/ml



#6 AR-1016-4

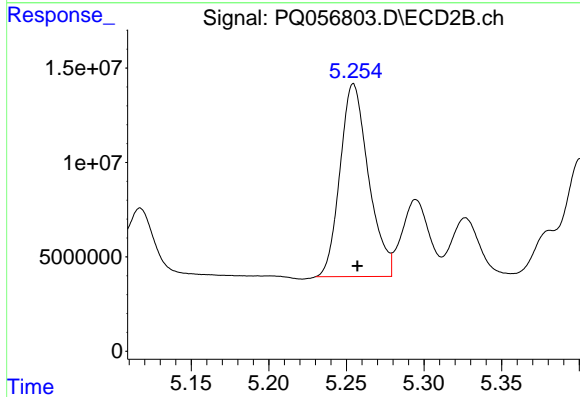
R.T.: 5.044 min  
 Delta R.T.: -0.003 min  
 Response: 108072749  
 Conc: 474.63 ng/ml



#7 AR-1016-5

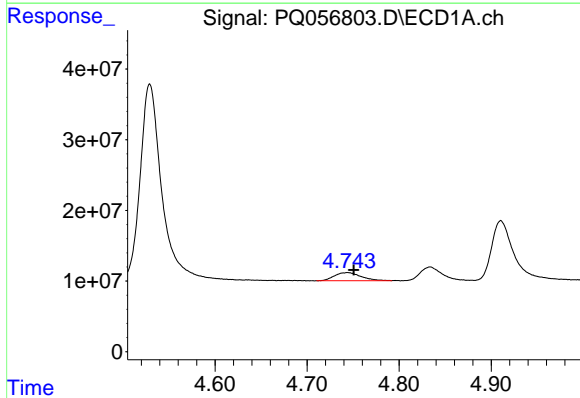
R.T.: 6.178 min  
 Delta R.T.: -0.002 min  
 Response: 198086660  
 Conc: 501.45 ng/ml

Instrument :  
 ECD\_Q  
 ClientSampleId :



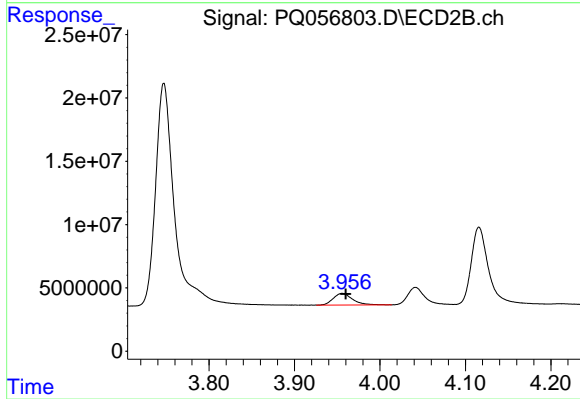
#7 AR-1016-5

R.T.: 5.255 min  
 Delta R.T.: -0.003 min  
 Response: 130354003  
 Conc: 454.11 ng/ml



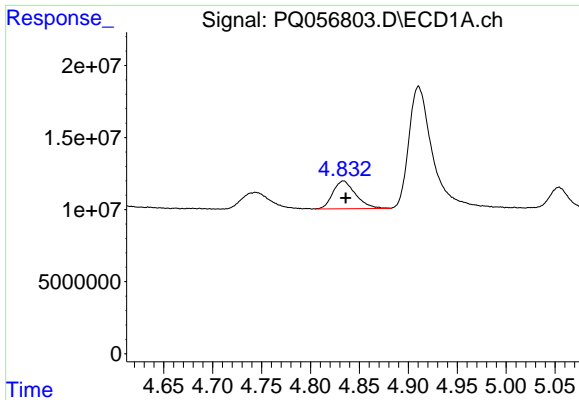
#8 AR-1221-1

R.T.: 4.744 min  
 Delta R.T.: -0.007 min  
 Response: 22876827  
 Conc: 131.27 ng/ml



#8 AR-1221-1

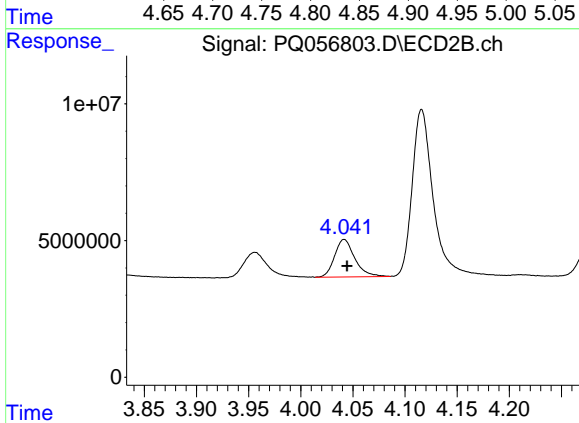
R.T.: 3.956 min  
 Delta R.T.: -0.004 min  
 Response: 14438133  
 Conc: 126.54 ng/ml



#9 AR-1221-2

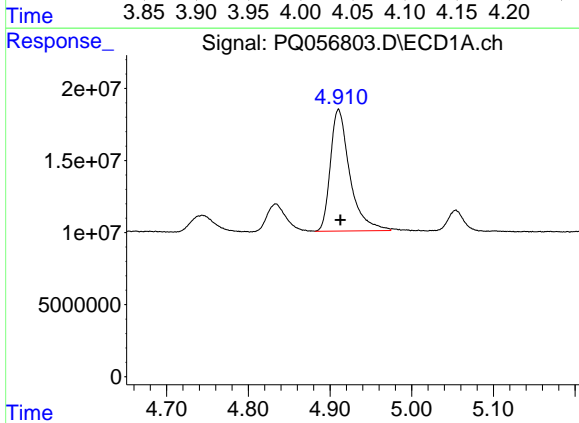
R.T.: 4.834 min  
 Delta R.T.: -0.002 min  
 Response: 31082265  
 Conc: 253.18 ng/ml

Instrument :  
 ECD\_Q  
 ClientSampleId :



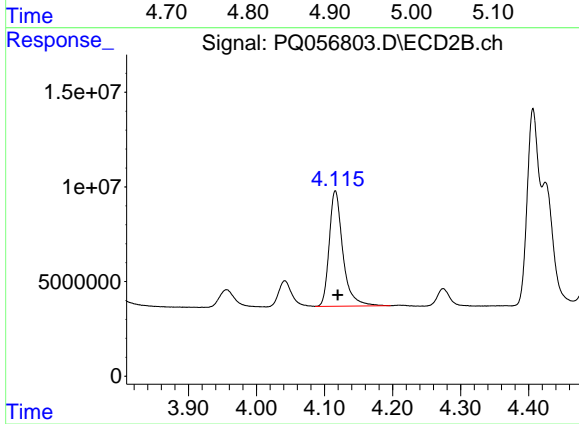
#9 AR-1221-2

R.T.: 4.042 min  
 Delta R.T.: -0.003 min  
 Response: 18510644  
 Conc: 233.82 ng/ml



#10 AR-1221-3

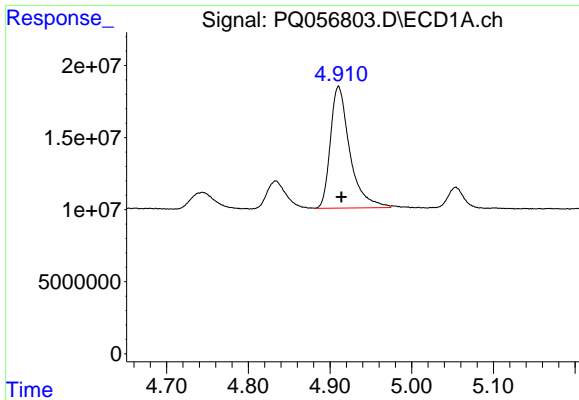
R.T.: 4.911 min  
 Delta R.T.: -0.002 min  
 Response: 139292637  
 Conc: 333.44 ng/ml



#10 AR-1221-3

R.T.: 4.116 min  
 Delta R.T.: -0.003 min  
 Response: 85023562  
 Conc: 306.54 ng/ml

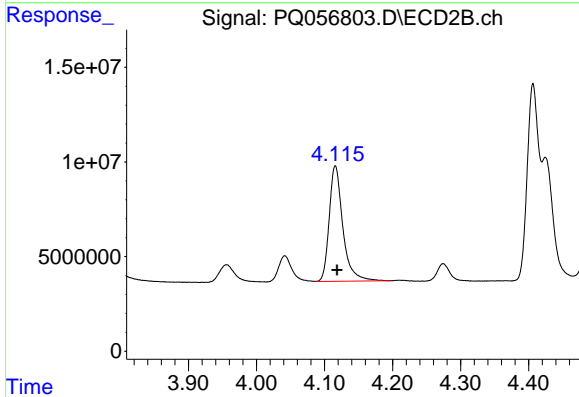




#11 AR-1232-1

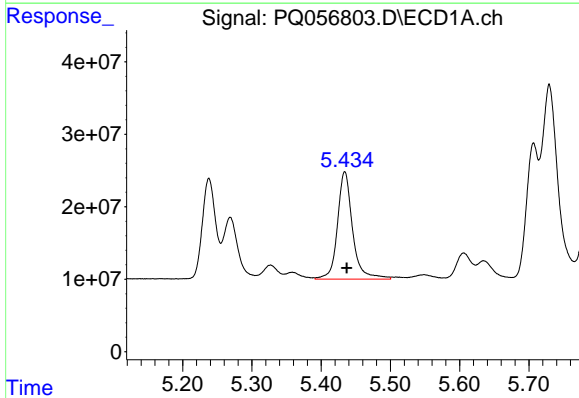
R.T.: 4.911 min  
 Delta R.T.: -0.003 min  
 Response: 139292637  
 Conc: 396.96 ng/ml

Instrument :  
 ECD\_Q  
 ClientSampleId :



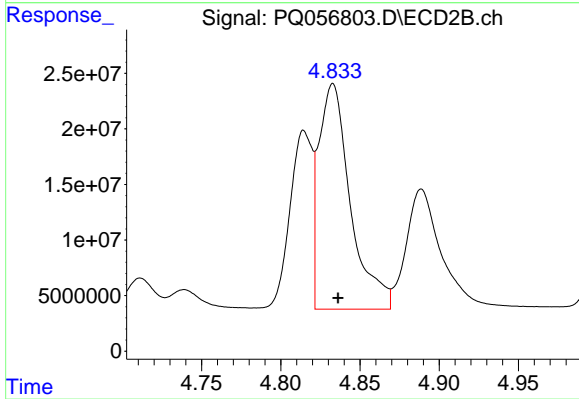
#11 AR-1232-1

R.T.: 4.116 min  
 Delta R.T.: -0.003 min  
 Response: 85023562  
 Conc: 373.78 ng/ml



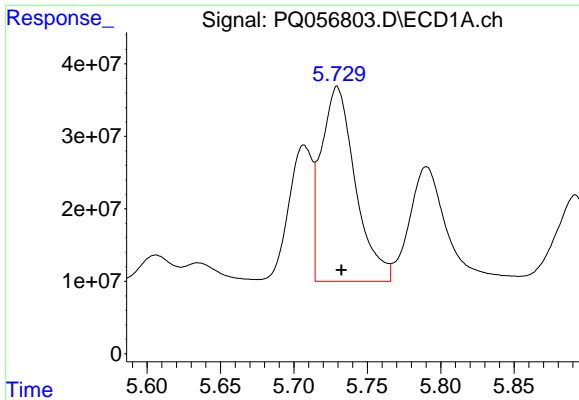
#12 AR-1232-2

R.T.: 5.434 min  
 Delta R.T.: -0.003 min  
 Response: 225090794  
 Conc: 895.68 ng/ml



#12 AR-1232-2

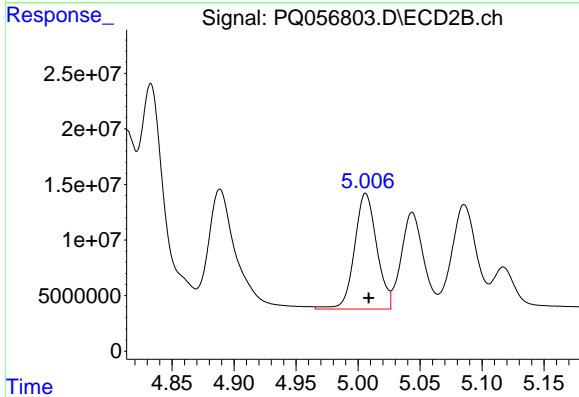
R.T.: 4.833 min  
 Delta R.T.: -0.003 min  
 Response: 281608190  
 Conc: 1195.66 ng/ml



#13 AR-1232-3

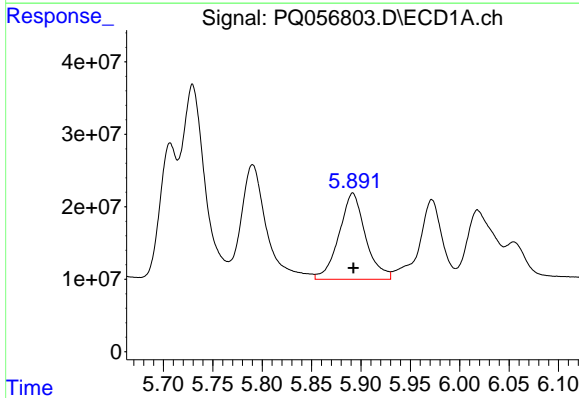
R.T.: 5.729 min  
 Delta R.T.: -0.003 min  
 Response: 434374876  
 Conc: 1216.84 ng/ml

Instrument :  
 ECD\_Q  
 ClientSampleId :



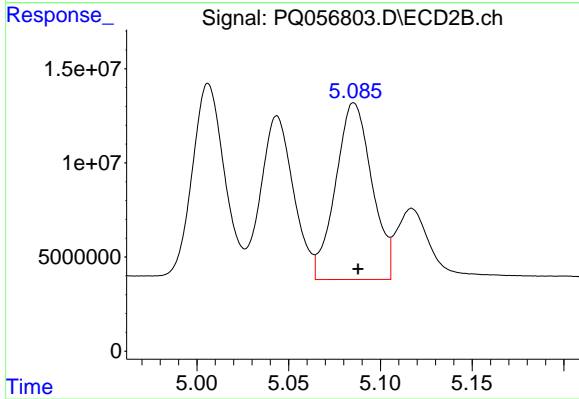
#13 AR-1232-3

R.T.: 5.006 min  
 Delta R.T.: -0.002 min  
 Response: 130179305  
 Conc: 1121.16 ng/ml



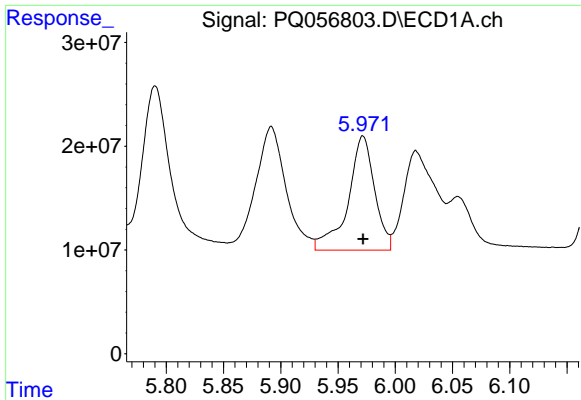
#14 AR-1232-4

R.T.: 5.892 min  
 Delta R.T.: 0.000 min  
 Response: 222899235  
 Conc: 1216.51 ng/ml



#14 AR-1232-4

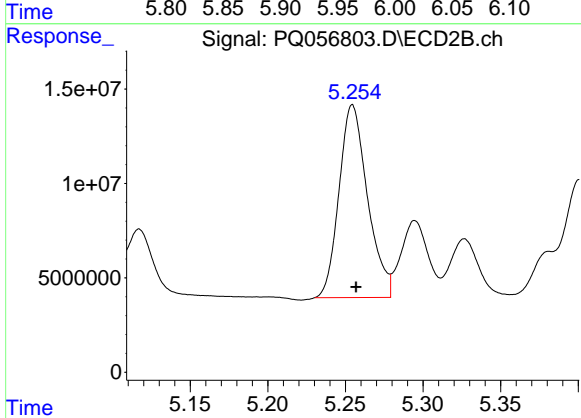
R.T.: 5.086 min  
 Delta R.T.: -0.002 min  
 Response: 129297538  
 Conc: 1326.34 ng/ml



#15 AR-1232-5

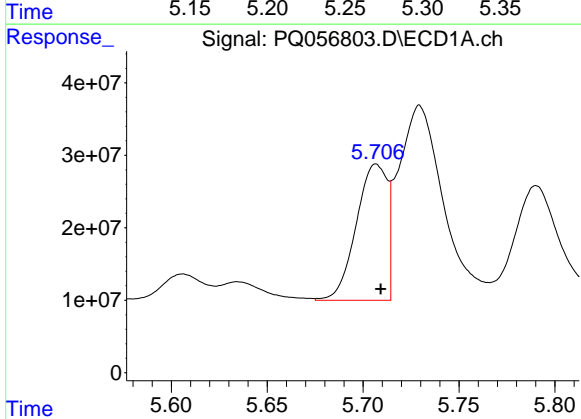
R.T.: 5.972 min  
 Delta R.T.: 0.000 min  
 Response: 177967670  
 Conc: 622.41 ng/ml

Instrument :  
 ECD\_Q  
 ClientSampleId :



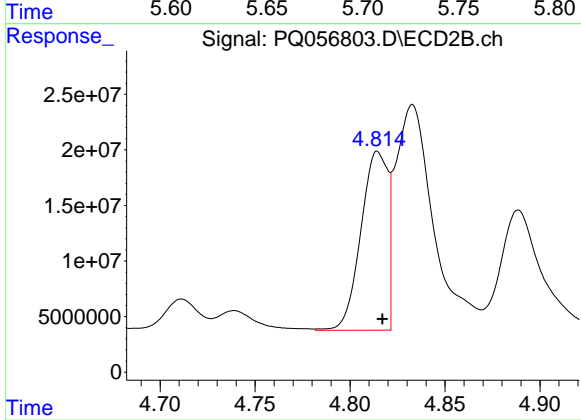
#15 AR-1232-5

R.T.: 5.255 min  
 Delta R.T.: -0.002 min  
 Response: 130354003  
 Conc: 1268.83 ng/ml



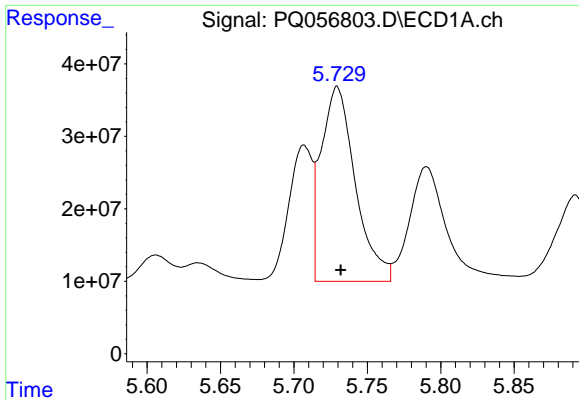
#16 AR-1242-1

R.T.: 5.707 min  
 Delta R.T.: -0.002 min  
 Response: 211345864  
 Conc: 542.80 ng/ml



#16 AR-1242-1

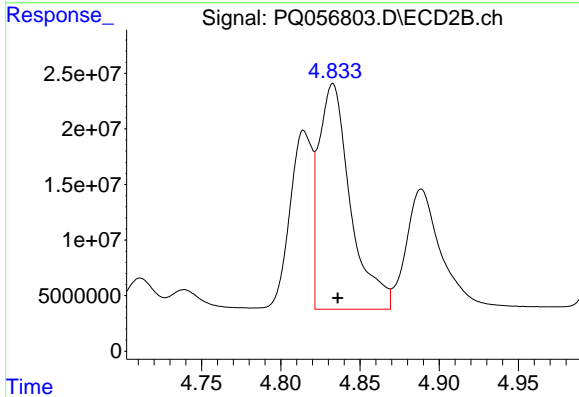
R.T.: 4.815 min  
 Delta R.T.: -0.003 min  
 Response: 158266056  
 Conc: 555.60 ng/ml



#17 AR-1242-2

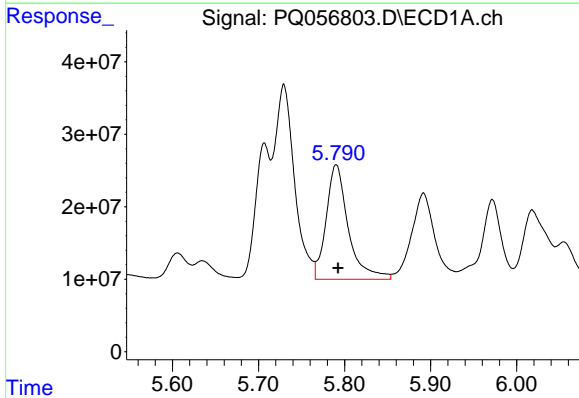
R.T.: 5.729 min  
 Delta R.T.: -0.003 min  
 Response: 434374876  
 Conc: 566.30 ng/ml

Instrument :  
 ECD\_Q  
 ClientSampleId :



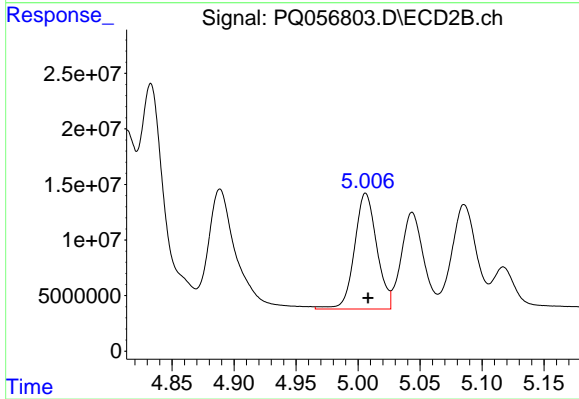
#17 AR-1242-2

R.T.: 4.833 min  
 Delta R.T.: -0.003 min  
 Response: 281608190  
 Conc: 556.87 ng/ml



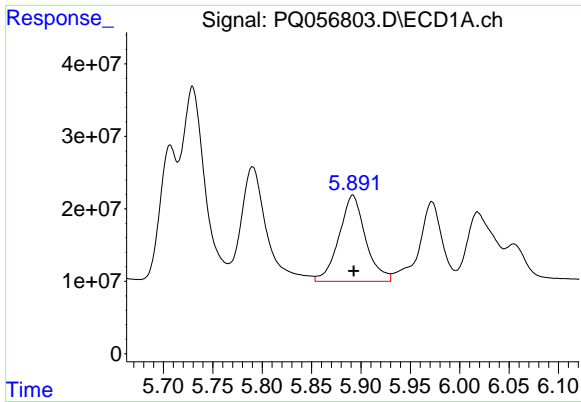
#18 AR-1242-3

R.T.: 5.790 min  
 Delta R.T.: -0.002 min  
 Response: 283059659  
 Conc: 558.18 ng/ml



#18 AR-1242-3

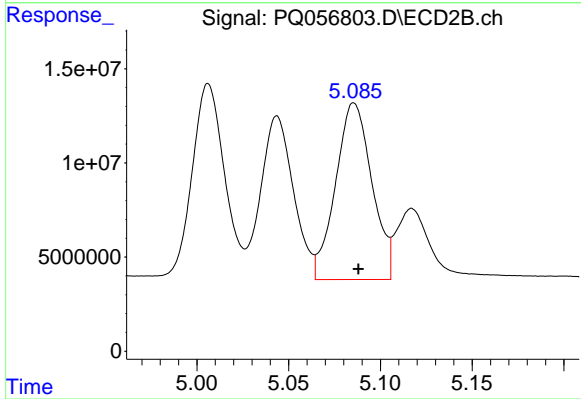
R.T.: 5.006 min  
 Delta R.T.: -0.002 min  
 Response: 130179305  
 Conc: 571.88 ng/ml



#19 AR-1242-4

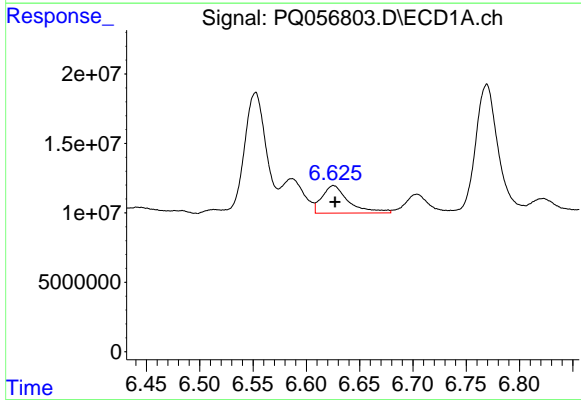
R.T.: 5.892 min  
 Delta R.T.: 0.000 min  
 Response: 222899235  
 Conc: 571.39 ng/ml

Instrument :  
 ECD\_Q  
 ClientSampleId :



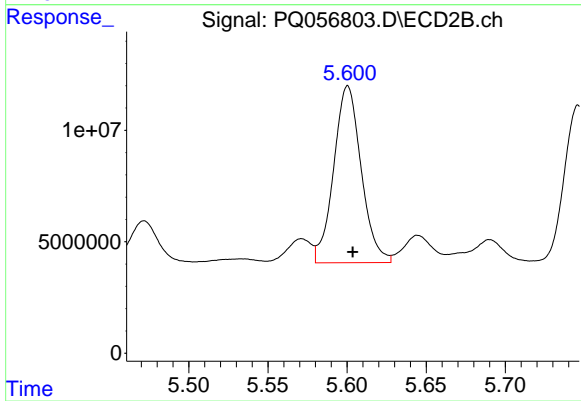
#19 AR-1242-4

R.T.: 5.086 min  
 Delta R.T.: -0.002 min  
 Response: 129297538  
 Conc: 565.50 ng/ml



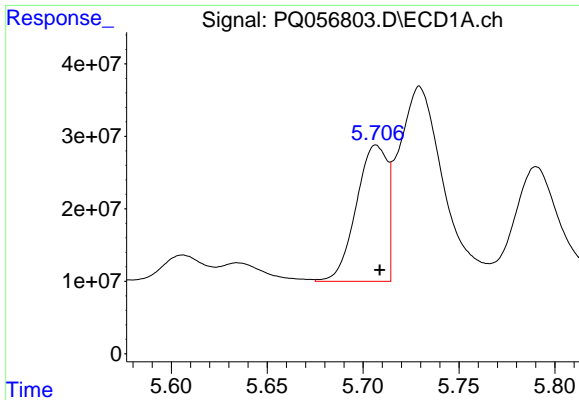
#20 AR-1242-5

R.T.: 6.626 min  
 Delta R.T.: -0.001 min  
 Response: 34367785  
 Conc: 86.95 ng/ml



#20 AR-1242-5

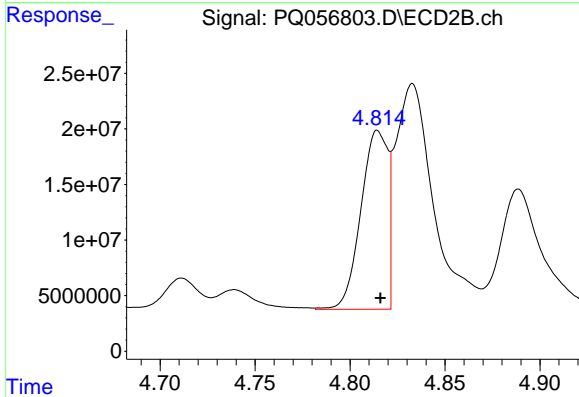
R.T.: 5.600 min  
 Delta R.T.: -0.003 min  
 Response: 96164837  
 Conc: 321.99 ng/ml



#21 AR-1248-1

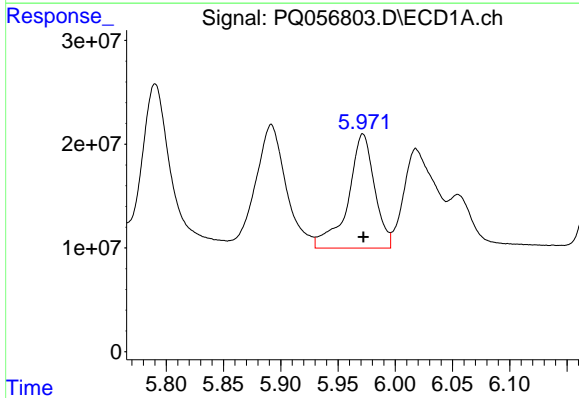
R.T.: 5.707 min  
 Delta R.T.: -0.002 min  
 Response: 211345864  
 Conc: 719.69 ng/ml

Instrument :  
 ECD\_Q  
 ClientSampleId :



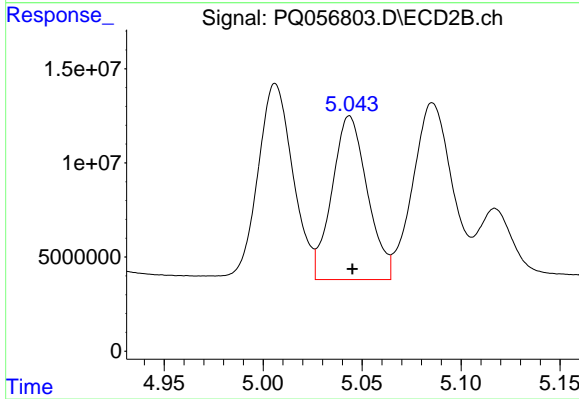
#21 AR-1248-1

R.T.: 4.815 min  
 Delta R.T.: -0.001 min  
 Response: 158266056  
 Conc: 709.08 ng/ml



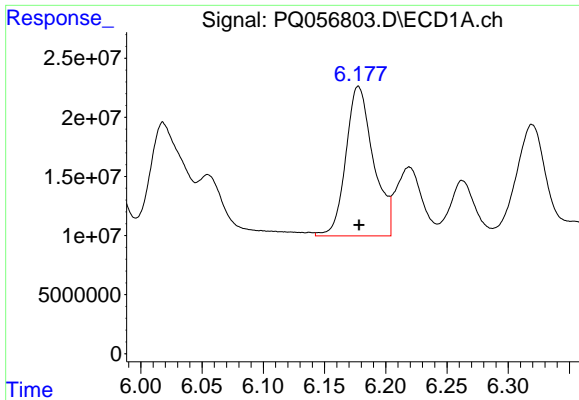
#22 AR-1248-2

R.T.: 5.972 min  
 Delta R.T.: 0.000 min  
 Response: 177967670  
 Conc: 331.56 ng/ml



#22 AR-1248-2

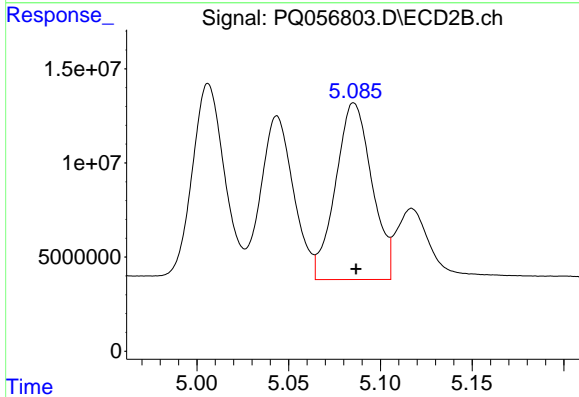
R.T.: 5.044 min  
 Delta R.T.: -0.001 min  
 Response: 108072749  
 Conc: 324.17 ng/ml



#23 AR-1248-3

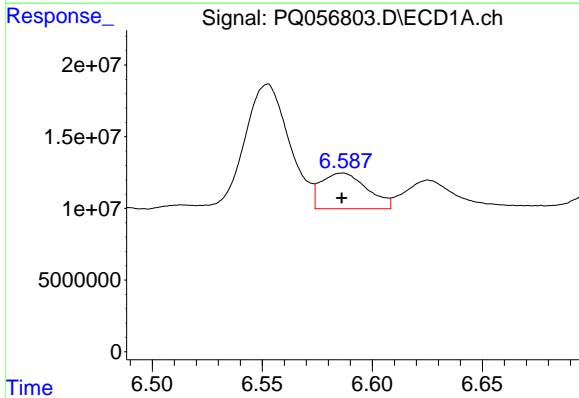
R.T.: 6.178 min  
 Delta R.T.: 0.000 min  
 Response: 198086660  
 Conc: 315.09 ng/ml

Instrument :  
 ECD\_Q  
 ClientSampleId :



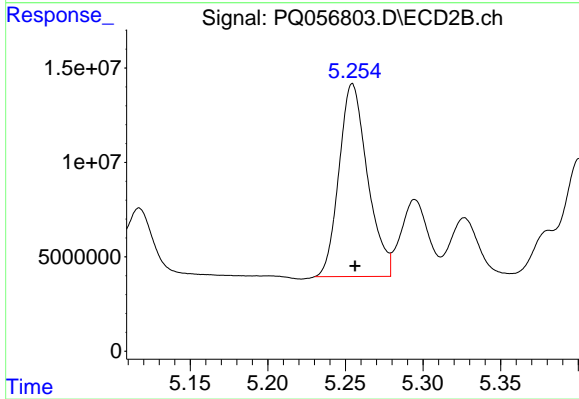
#23 AR-1248-3

R.T.: 5.086 min  
 Delta R.T.: -0.001 min  
 Response: 129297538  
 Conc: 369.03 ng/ml



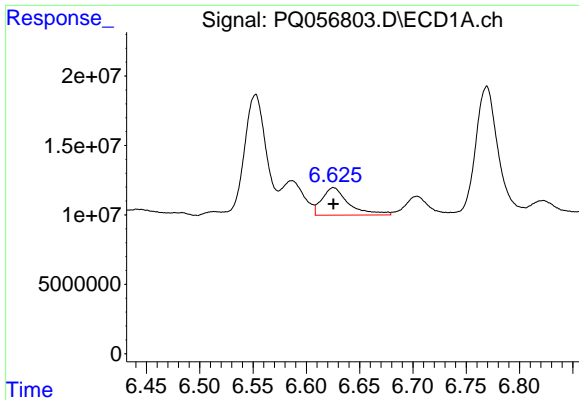
#24 AR-1248-4

R.T.: 6.586 min  
 Delta R.T.: 0.000 min  
 Response: 36269236  
 Conc: 55.44 ng/ml



#24 AR-1248-4

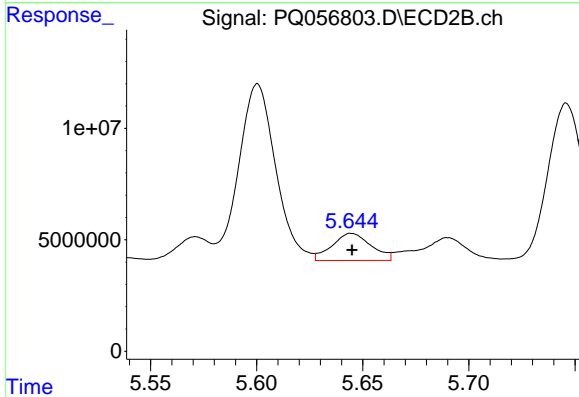
R.T.: 5.255 min  
 Delta R.T.: -0.002 min  
 Response: 130354003  
 Conc: 312.04 ng/ml



#25 AR-1248-5

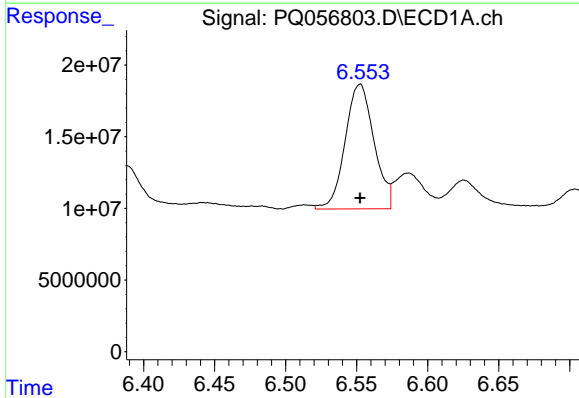
R.T.: 6.626 min  
 Delta R.T.: 0.000 min  
 Response: 34367785  
 Conc: 49.48 ng/ml

Instrument :  
 ECD\_Q  
 ClientSampleId :



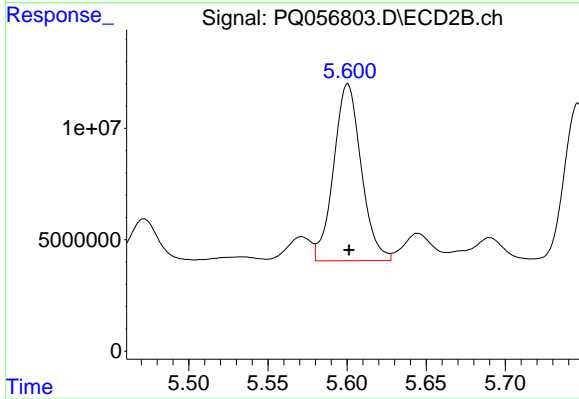
#25 AR-1248-5

R.T.: 5.645 min  
 Delta R.T.: 0.000 min  
 Response: 15628840  
 Conc: 34.87 ng/ml



#26 AR-1254-1

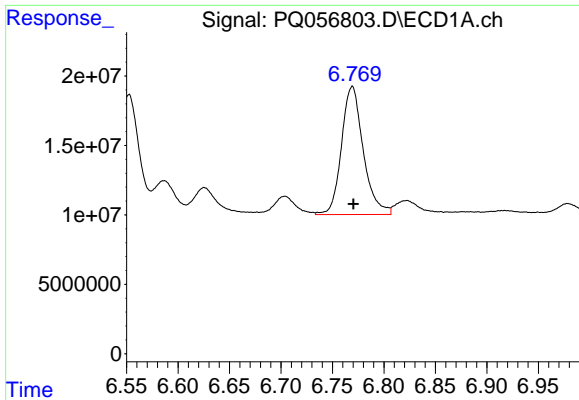
R.T.: 6.552 min  
 Delta R.T.: 0.000 min  
 Response: 122981929  
 Conc: 191.02 ng/ml



#26 AR-1254-1

R.T.: 5.600 min  
 Delta R.T.: 0.000 min  
 Response: 96164837  
 Conc: 144.21 ng/ml

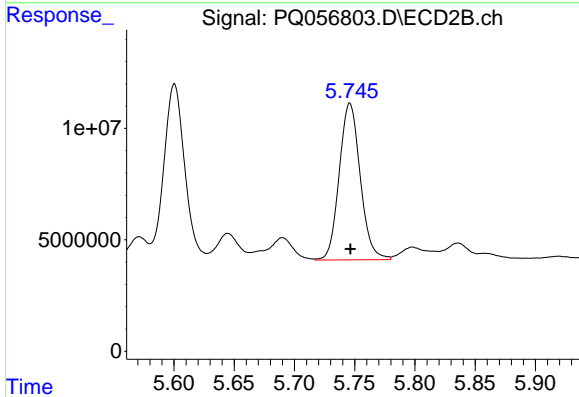




#27 AR-1254-2

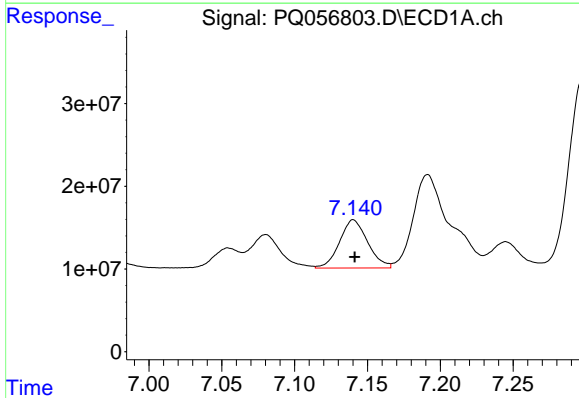
R.T.: 6.769 min  
 Delta R.T.: -0.001 min  
 Response: 136033332  
 Conc: 136.38 ng/ml

Instrument :  
 ECD\_Q  
 ClientSampleId :



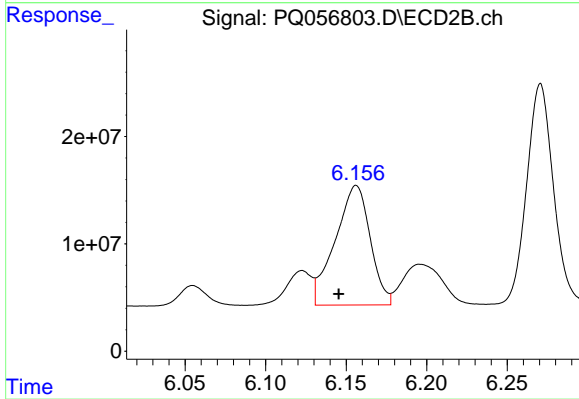
#27 AR-1254-2

R.T.: 5.746 min  
 Delta R.T.: 0.000 min  
 Response: 85325382  
 Conc: 155.40 ng/ml



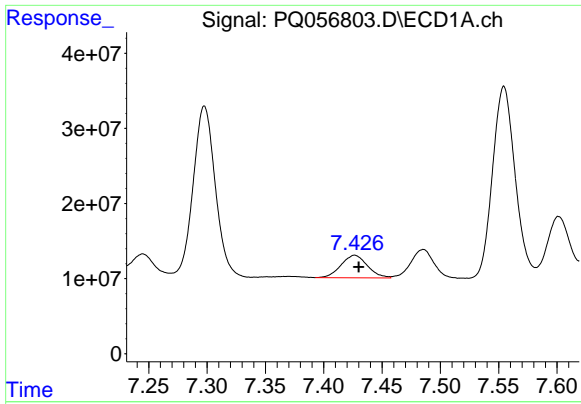
#28 AR-1254-3

R.T.: 7.140 min  
 Delta R.T.: 0.000 min  
 Response: 78169135  
 Conc: 70.58 ng/ml



#28 AR-1254-3

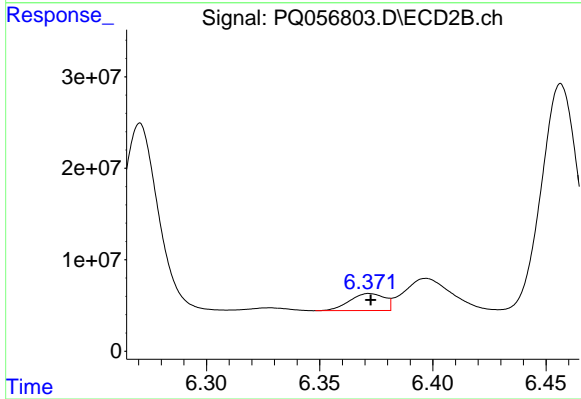
R.T.: 6.156 min  
 Delta R.T.: 0.011 min  
 Response: 168586917  
 Conc: 181.39 ng/ml



#29 AR-1254-4

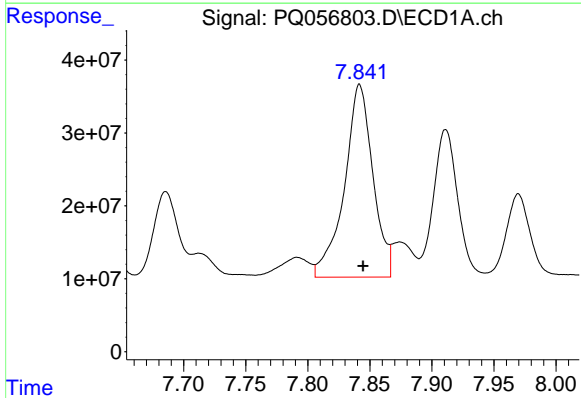
R.T.: 7.427 min  
 Delta R.T.: -0.003 min  
 Response: 47326698  
 Conc: 64.60 ng/ml

Instrument :  
 ECD\_Q  
 ClientSampleId :



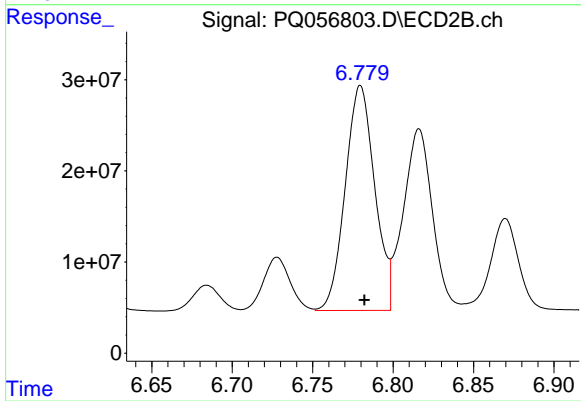
#29 AR-1254-4

R.T.: 6.372 min  
 Delta R.T.: 0.000 min  
 Response: 19850368  
 Conc: 29.35 ng/ml



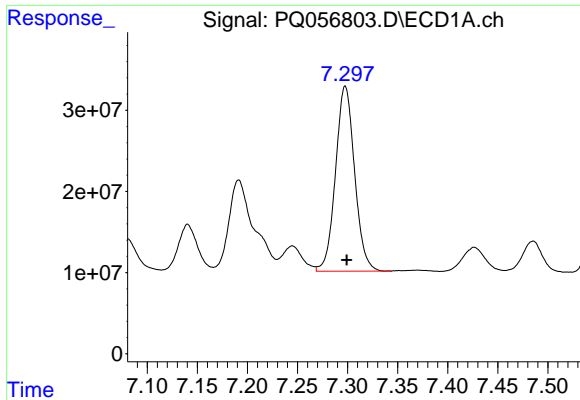
#30 AR-1254-5

R.T.: 7.842 min  
 Delta R.T.: -0.003 min  
 Response: 422570925  
 Conc: 499.58 ng/ml



#30 AR-1254-5

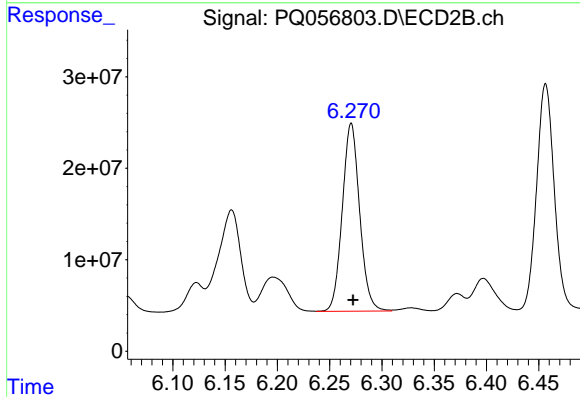
R.T.: 6.780 min  
 Delta R.T.: -0.002 min  
 Response: 314806352  
 Conc: 385.36 ng/ml



#31 AR-1260-1

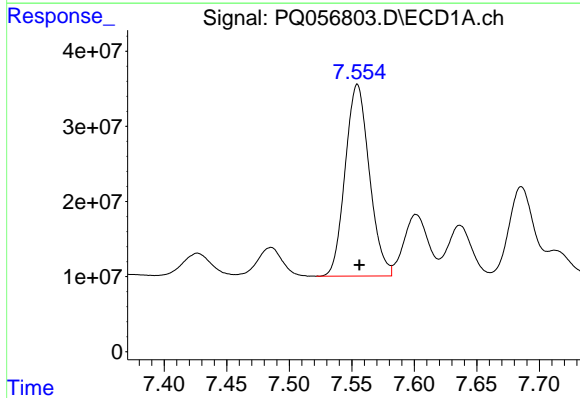
R.T.: 7.298 min  
 Delta R.T.: -0.002 min  
 Response: 302835985  
 Conc: 472.60 ng/ml

Instrument :  
 ECD\_Q  
 ClientSampleId :



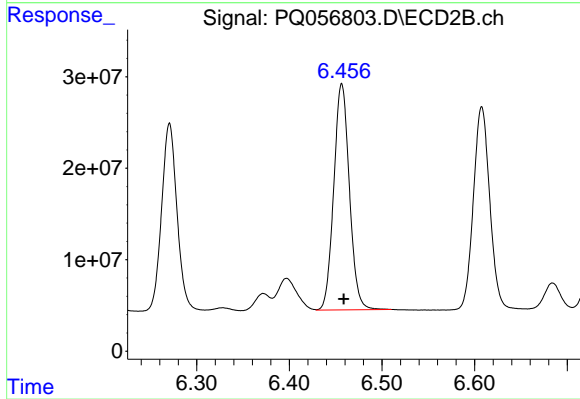
#31 AR-1260-1

R.T.: 6.271 min  
 Delta R.T.: -0.002 min  
 Response: 237533389  
 Conc: 434.85 ng/ml



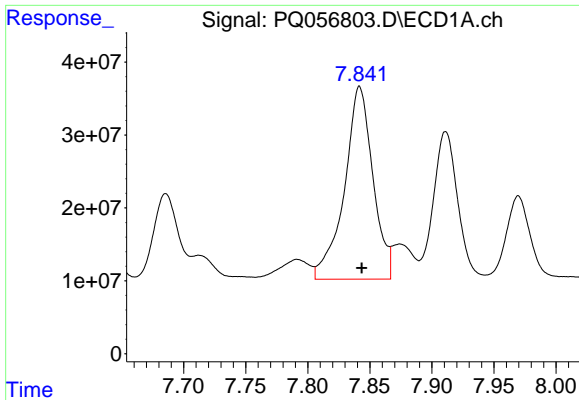
#32 AR-1260-2

R.T.: 7.554 min  
 Delta R.T.: -0.001 min  
 Response: 343457707  
 Conc: 466.02 ng/ml



#32 AR-1260-2

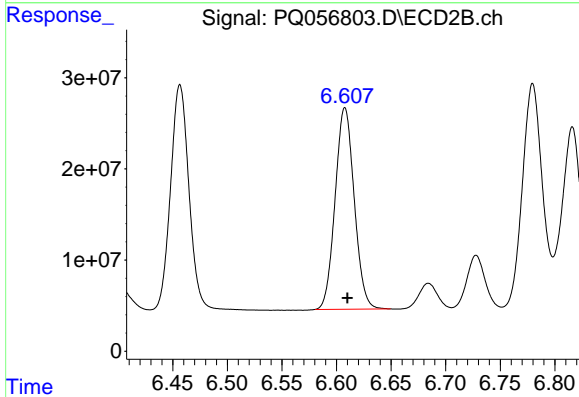
R.T.: 6.457 min  
 Delta R.T.: -0.002 min  
 Response: 289877066  
 Conc: 435.57 ng/ml



#33 AR-1260-3

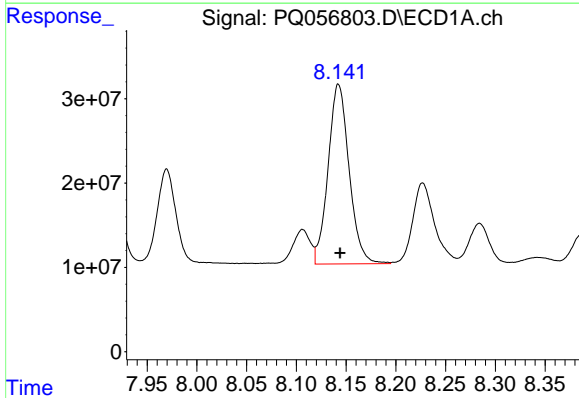
R.T.: 7.842 min  
 Delta R.T.: -0.002 min  
 Response: 422570925  
 Conc: 453.10 ng/ml

Instrument :  
 ECD\_Q  
 ClientSampleId :



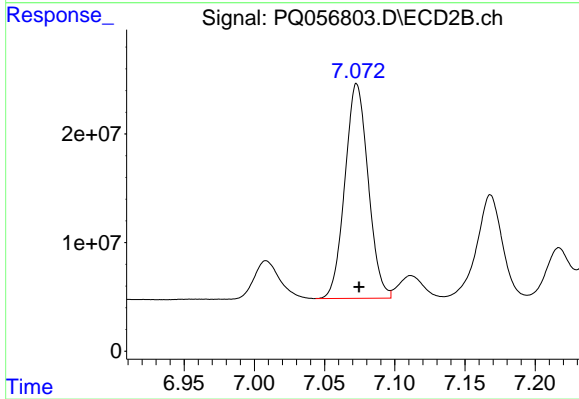
#33 AR-1260-3

R.T.: 6.608 min  
 Delta R.T.: -0.002 min  
 Response: 269386813  
 Conc: 435.34 ng/ml



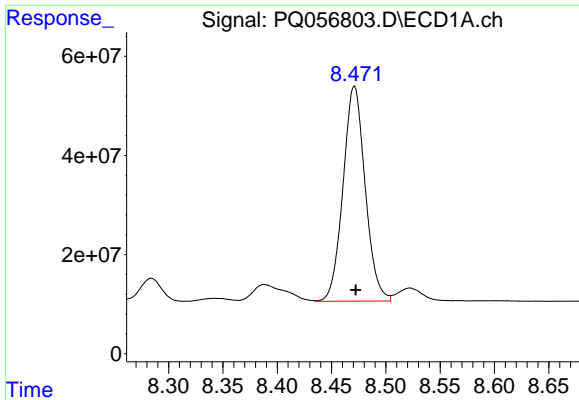
#34 AR-1260-4

R.T.: 8.142 min  
 Delta R.T.: -0.002 min  
 Response: 313377920  
 Conc: 453.89 ng/ml



#34 AR-1260-4

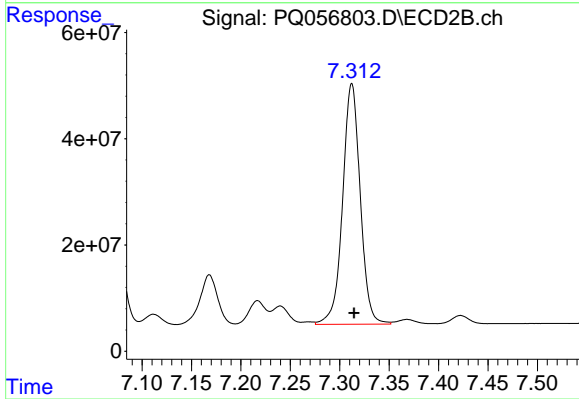
R.T.: 7.073 min  
 Delta R.T.: -0.002 min  
 Response: 227939888  
 Conc: 431.08 ng/ml



#35 AR-1260-5

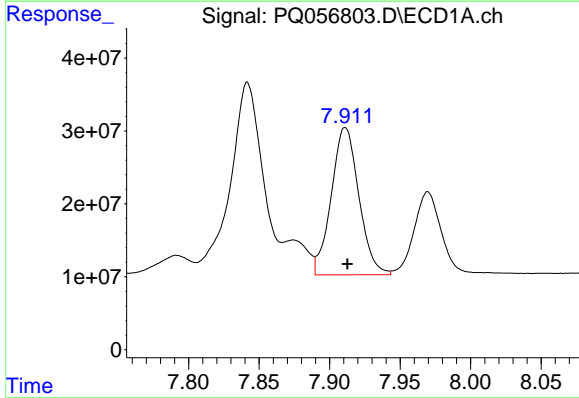
R.T.: 8.471 min  
 Delta R.T.: -0.001 min  
 Response: 615912447  
 Conc: 443.68 ng/ml

Instrument :  
 ECD\_Q  
 ClientSampleId :



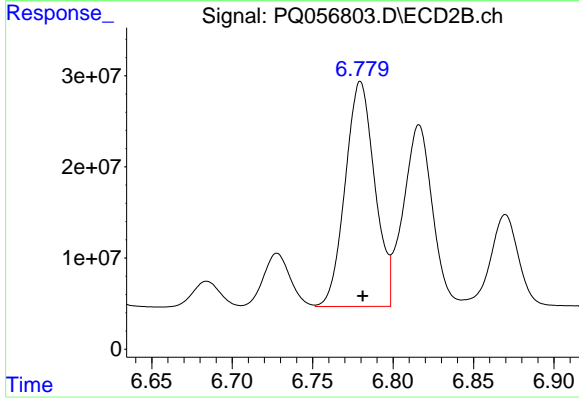
#35 AR-1260-5

R.T.: 7.312 min  
 Delta R.T.: -0.002 min  
 Response: 563355967  
 Conc: 430.39 ng/ml



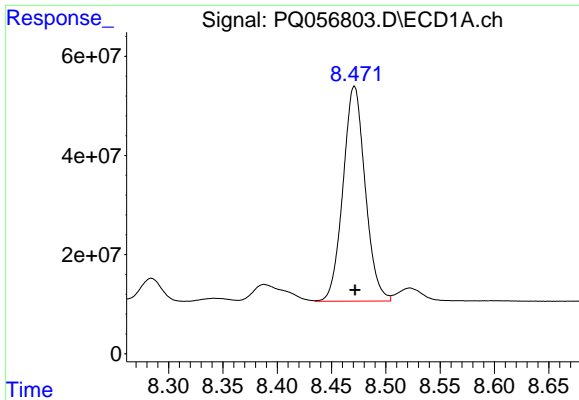
#36 AR-1262-1

R.T.: 7.911 min  
 Delta R.T.: -0.001 min  
 Response: 275317868  
 Conc: 274.63 ng/ml



#36 AR-1262-1

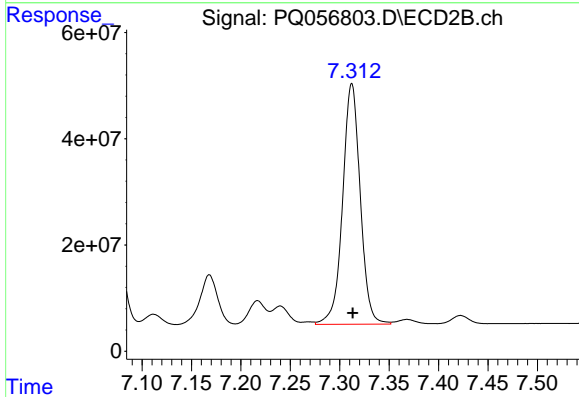
R.T.: 6.780 min  
 Delta R.T.: -0.001 min  
 Response: 314806352  
 Conc: 743.44 ng/ml



#37 AR-1262-2

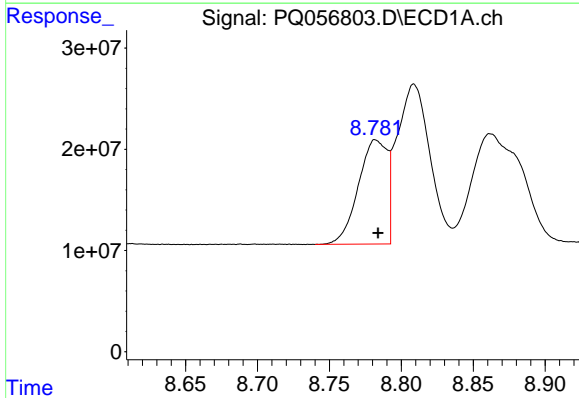
R.T.: 8.471 min  
 Delta R.T.: 0.000 min  
 Response: 615912447  
 Conc: 335.54 ng/ml

Instrument :  
 ECD\_Q  
 ClientSampleId :



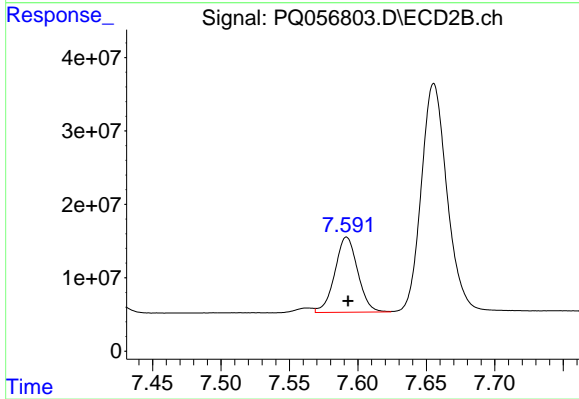
#37 AR-1262-2

R.T.: 7.312 min  
 Delta R.T.: -0.001 min  
 Response: 563355967  
 Conc: 352.80 ng/ml



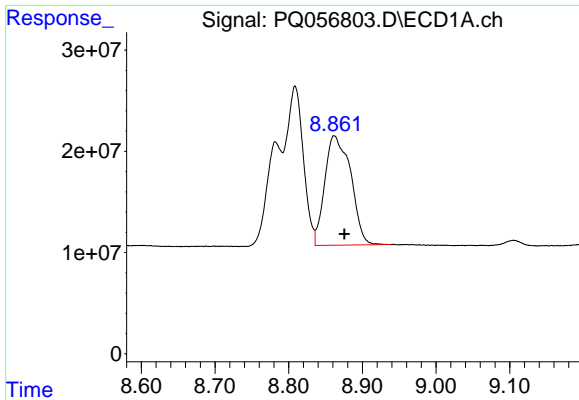
#38 AR-1262-3

R.T.: 8.782 min  
 Delta R.T.: -0.002 min  
 Response: 143953564  
 Conc: 178.37 ng/ml



#38 AR-1262-3

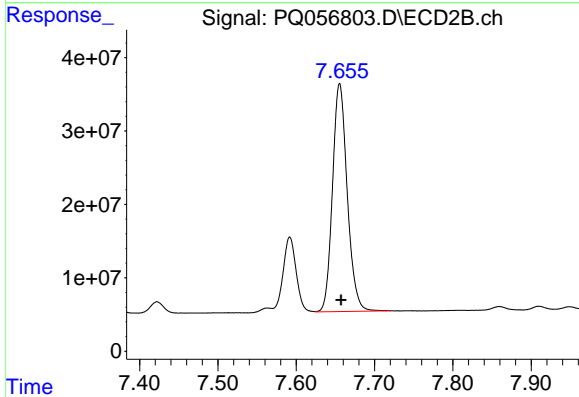
R.T.: 7.592 min  
 Delta R.T.: -0.001 min  
 Response: 119029516  
 Conc: 185.52 ng/ml



#39 AR-1262-4

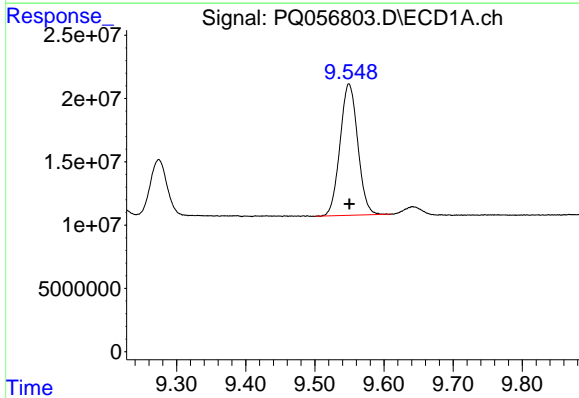
R.T.: 8.862 min  
 Delta R.T.: -0.014 min  
 Response: 264120764  
 Conc: 440.98 ng/ml

Instrument :  
 ECD\_Q  
 ClientSampleId :



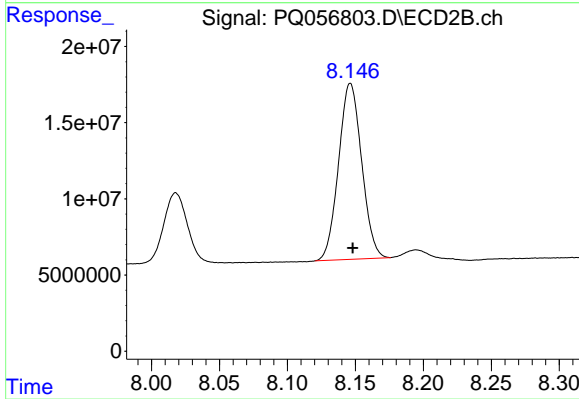
#39 AR-1262-4

R.T.: 7.655 min  
 Delta R.T.: -0.002 min  
 Response: 405337944  
 Conc: 343.54 ng/ml



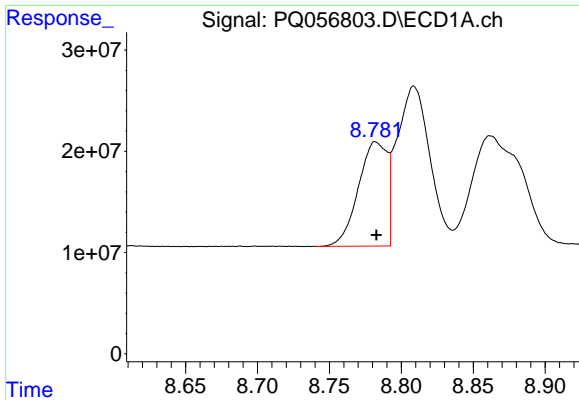
#40 AR-1262-5

R.T.: 9.549 min  
 Delta R.T.: 0.000 min  
 Response: 184905978  
 Conc: 274.55 ng/ml



#40 AR-1262-5

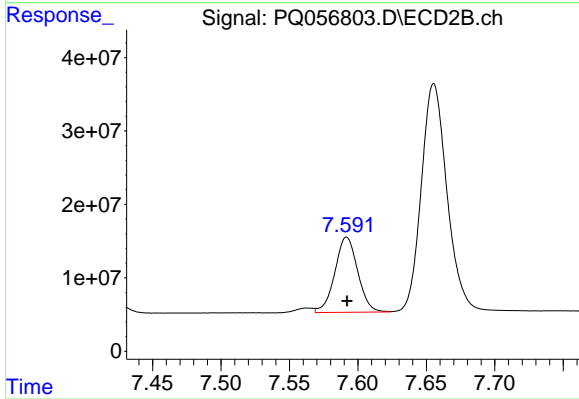
R.T.: 8.146 min  
 Delta R.T.: -0.002 min  
 Response: 136493697  
 Conc: 271.80 ng/ml



#41 AR-1268-1

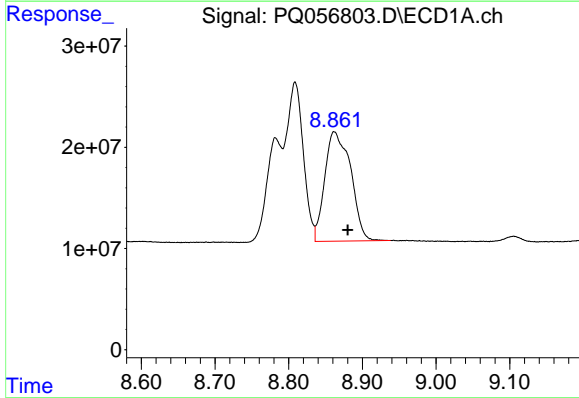
R.T.: 8.782 min  
 Delta R.T.: 0.000 min  
 Response: 143953564  
 Conc: 66.30 ng/ml

Instrument :  
 ECD\_Q  
 ClientSampleId :



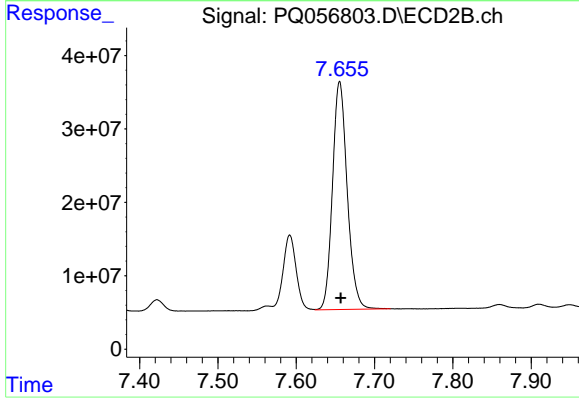
#41 AR-1268-1

R.T.: 7.592 min  
 Delta R.T.: 0.000 min  
 Response: 119029516  
 Conc: 64.51 ng/ml



#42 AR-1268-2

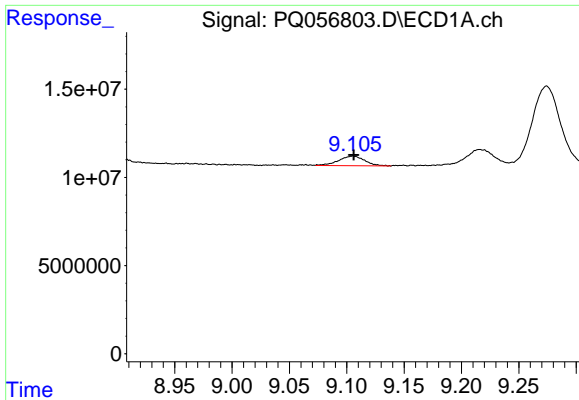
R.T.: 8.862 min  
 Delta R.T.: -0.018 min  
 Response: 264120764  
 Conc: 125.67 ng/ml



#42 AR-1268-2

R.T.: 7.655 min  
 Delta R.T.: -0.001 min  
 Response: 405337944  
 Conc: 240.97 ng/ml

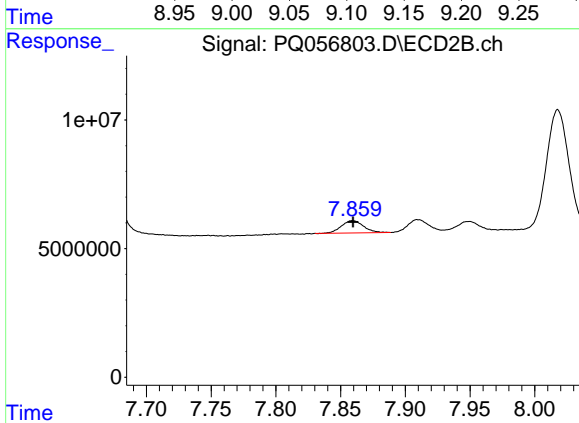




#43 AR-1268-3

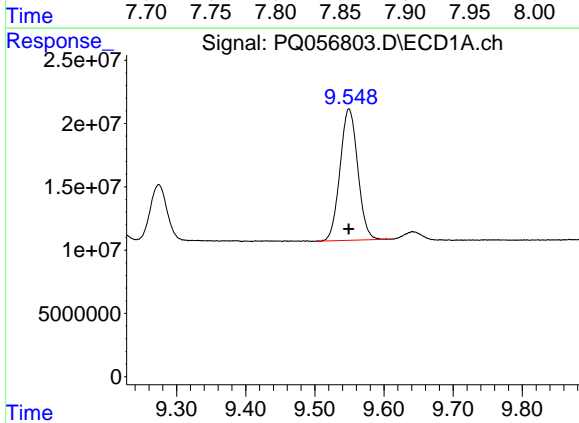
R.T.: 9.106 min  
 Delta R.T.: 0.000 min  
 Response: 8634513  
 Conc: 4.82 ng/ml

Instrument :  
 ECD\_Q  
 ClientSampleId :



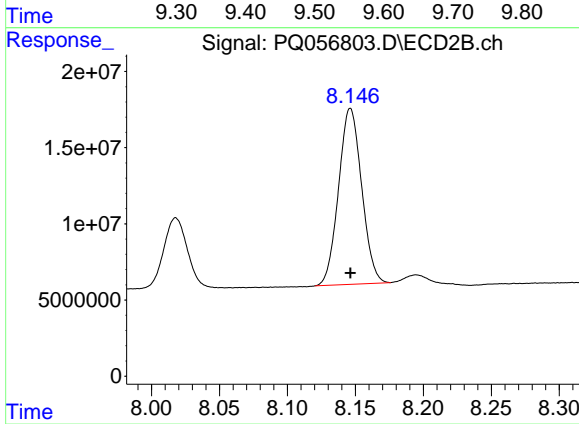
#43 AR-1268-3

R.T.: 7.859 min  
 Delta R.T.: 0.000 min  
 Response: 5622198  
 Conc: 4.39 ng/ml



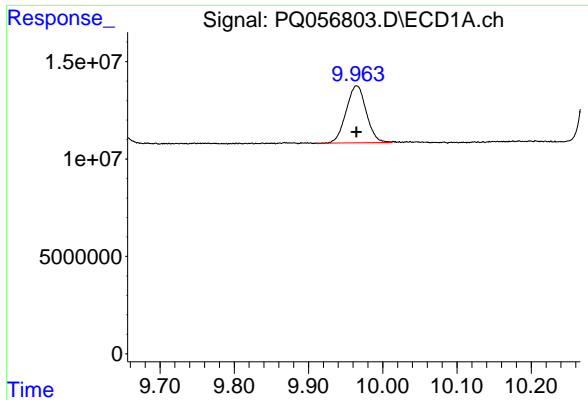
#44 AR-1268-4

R.T.: 9.549 min  
 Delta R.T.: 0.000 min  
 Response: 184905978  
 Conc: 257.03 ng/ml



#44 AR-1268-4

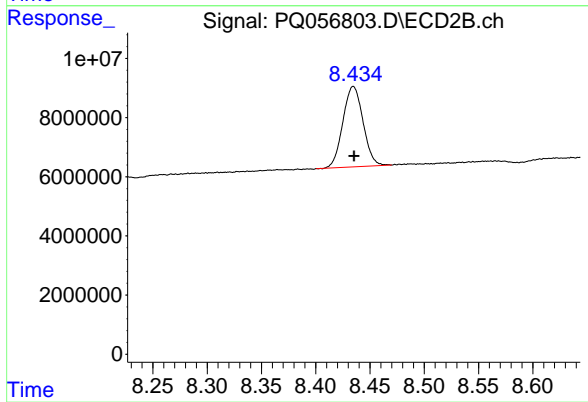
R.T.: 8.146 min  
 Delta R.T.: 0.000 min  
 Response: 136493697  
 Conc: 247.84 ng/ml



#45 AR-1268-5

R.T.: 9.965 min  
Delta R.T.: 0.000 min  
Response: 55074709  
Conc: 9.32 ng/ml

Instrument :  
ECD\_Q  
ClientSampleId :



#45 AR-1268-5

R.T.: 8.435 min  
Delta R.T.: 0.000 min  
Response: 35177740  
Conc: 7.88 ng/ml