

Data Path : Z:\pestpcbsrv\HPCHEM1\ECD_Q\Data\PQ032824\
 Data File : PQ065893.D
 Signal(s) : Signal #1: ECD1A.ch Signal #2: ECD2B.ch
 Acq On : 28 Mar 2024 20:46
 Operator : YP\AJ
 Sample : P1887-02
 Misc :
 ALS Vial : 27 Sample Multiplier: 1

Instrument :
 ECD_Q
 ClientSampleId :
 E0795

Integration File signal 1: autoint1.e
 Integration File signal 2: autoint2.e
 Quant Time: Mar 28 22:39:25 2024
 Quant Method : Z:\pestpcbsrv\HPCHEM1\ECD_Q\Method\PQ030524CLP.M
 Quant Title : GC EXTRACTABLES
 QLast Update : Wed Mar 06 05:19:07 2024
 Response via : Initial Calibration
 Integrator: ChemStation

Volume Inj. : 1 µl
 Signal #1 Phase : ZB MR1 Signal #2 Phase: ZB MR2
 Signal #1 Info : 30Mx0.32mmx 0.5µm Signal #2 Info : 30M x 0.32mm x 0.25µm

Compound	RT#1	RT#2	Resp#1	Resp#2	ng/ml	ng/ml
System Monitoring Compounds						
1) SA Tetrachlo...	3.447	2.736	86189177	139.3E6	20.126	19.934
2) SA Decachlor...	8.660	7.506	48928206	108.0E6	32.377	23.978 #
Target Compounds						
3) L1 AR-1016-1	4.518f	0.000	4427773	0	31.946	N.D. #
4) L1 AR-1016-2	4.616	0.000	8426534	0	42.296	N.D. #
5) L1 AR-1016-3	4.641	0.000	2301669	0	18.247	N.D. #
6) L1 AR-1016-4	4.742	0.000	1914535	0	18.420	N.D. #
7) L1 AR-1016-5	0.000	4.137	0	1506673	N.D.	7.361 #
8) L2 AR-1221-1	3.634	2.985f	12338258	4489260	260.476	53.414 #
9) L2 AR-1221-2	3.728	3.002	1014912	2358481	31.126	39.336 #
12) L3 AR-1232-2	4.306	0.000	2550656	0	52.246	N.D. #
13) L3 AR-1232-3	4.616f	0.000	8426534	0	91.292	N.D. #
14) L3 AR-1232-4	4.742	0.000	1914535	0	39.703	N.D. #
15) L3 AR-1232-5	0.000	4.137	0	1506673	N.D.	17.400 #
16) L4 AR-1242-1	4.518f	0.000	4427773	0	37.345	N.D. #
17) L4 AR-1242-2	4.616	0.000	8426534	0	50.486	N.D. #
18) L4 AR-1242-3	4.641	0.000	2301669	0	21.747	N.D. #
19) L4 AR-1242-4	4.742	0.000	1914535	0	21.885	N.D. #
21) L5 AR-1248-1	4.518f	0.000	4427773	0	50.074	N.D. #
24) L5 AR-1248-4	0.000	4.137	0	1506673	N.D.	5.483 #
27) L6 AR-1254-2	5.620	4.687f	2192816	1951883	9.384	5.339 #
28) L6 AR-1254-3	5.933	0.000	2026866	0	8.319	N.D. #
29) L6 AR-1254-4	0.000	5.222	0	71661	N.D.	0.189 #
30) L6 AR-1254-5	0.000	5.638	0	2998953	N.D.	5.550 #
31) L7 AR-1260-1	0.000	5.214f	0	916754	N.D.	2.234 #
33) L7 AR-1260-3	0.000	5.483	0	1549194	N.D.	3.307 #
34) L7 AR-1260-4	7.020f	5.971	843242	2186465	4.986	5.621
35) L7 AR-1260-5	7.298	6.233f	3787845	3494451	11.467	3.776 #
36) L8 AR-1262-1	0.000	5.638f	0	2998953	N.D.	5.330 #
37) L8 AR-1262-2	7.298	6.233f	3787845	3494451	10.404	3.478 #
38) L8 AR-1262-3	7.568	0.000	1766478	0	7.340	N.D. #
39) L8 AR-1262-4	7.568f	0.000	1766478	0	9.625	N.D. #
40) L8 AR-1262-5	8.144	0.000	884458	0	7.245	N.D. #
41) L9 AR-1268-1	7.568	0.000	1766478	0	4.469	N.D. #
42) L9 AR-1268-2	7.568f	0.000	1766478	0	4.919	N.D. #
43) L9 AR-1268-3	7.796	0.000	1948904	0	6.522	N.D. #
44) L9 AR-1268-4	8.144	0.000	884458	0	6.870	N.D. #
45) L9 AR-1268-5	8.424	7.299	625087	4350006	0.705	1.787 #

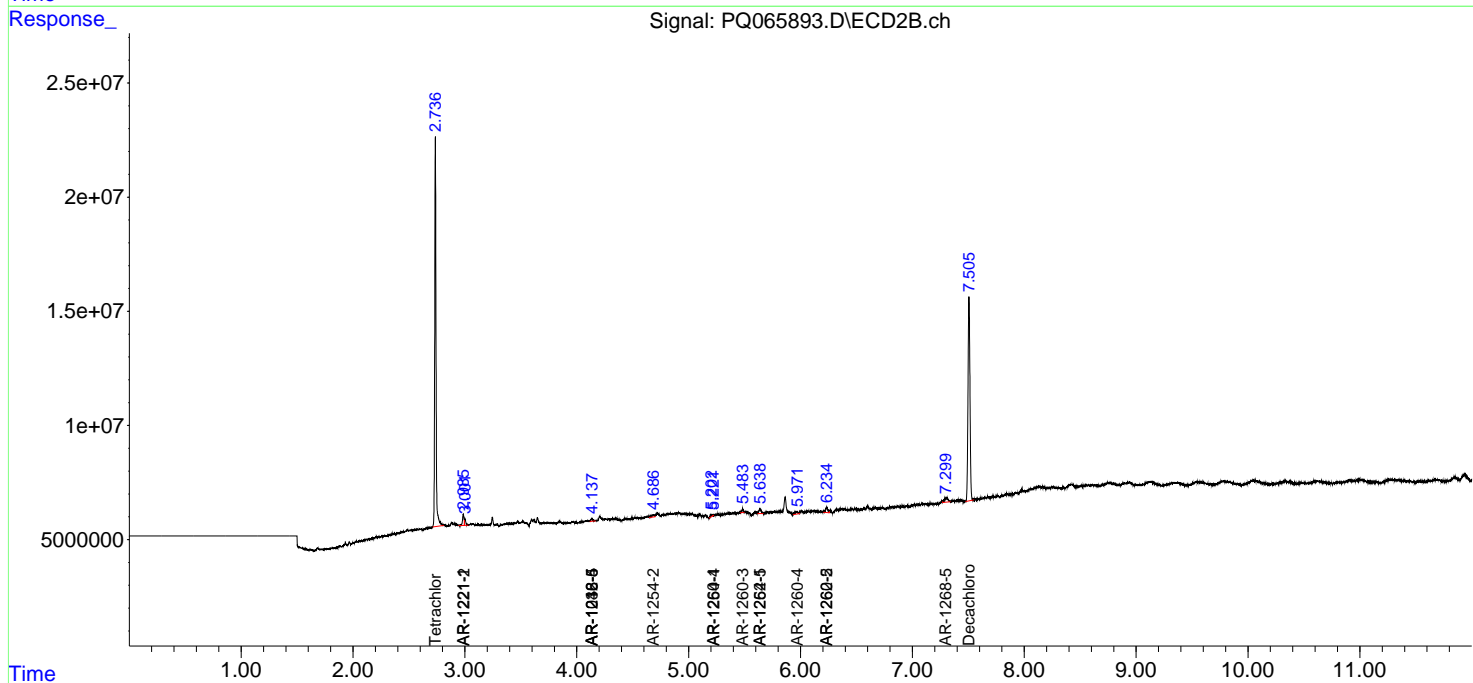
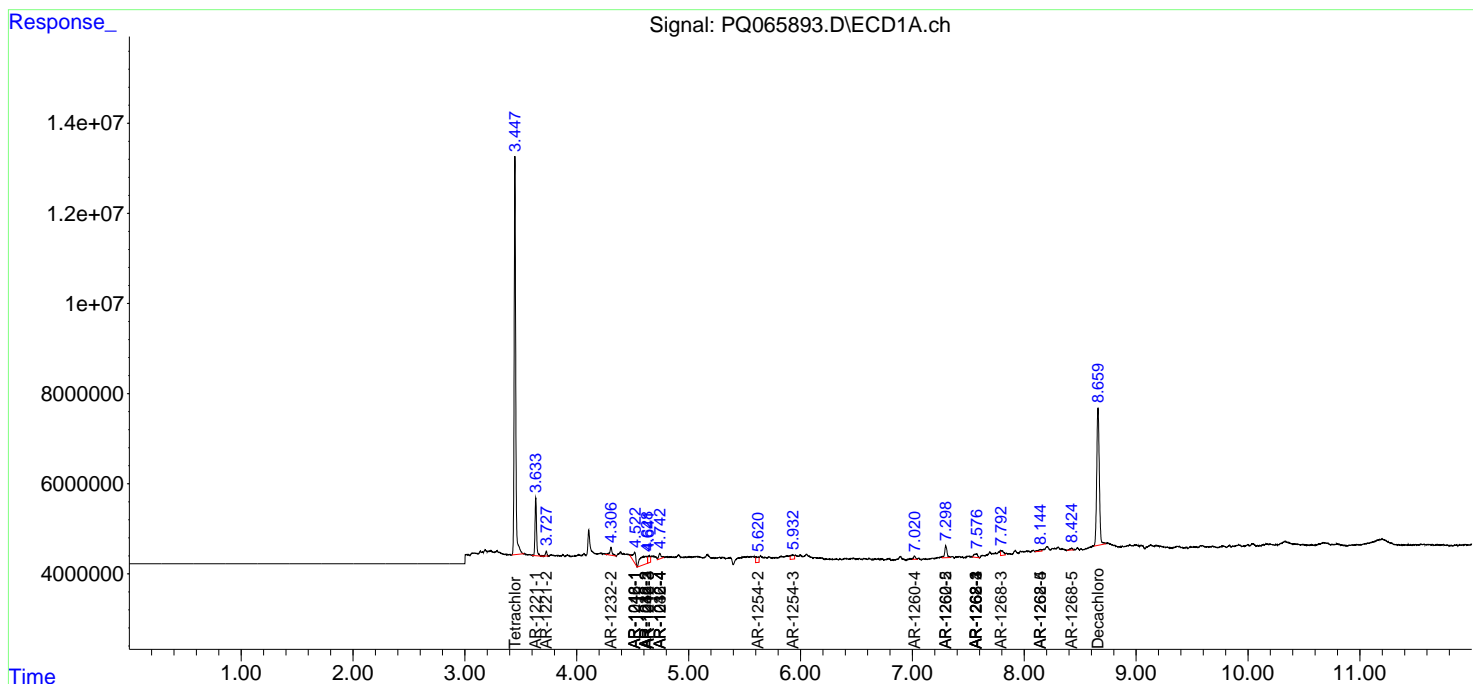
(f)=RT Delta > 1/2 Window (#)=Amounts differ by > 25% (m)=manual int.

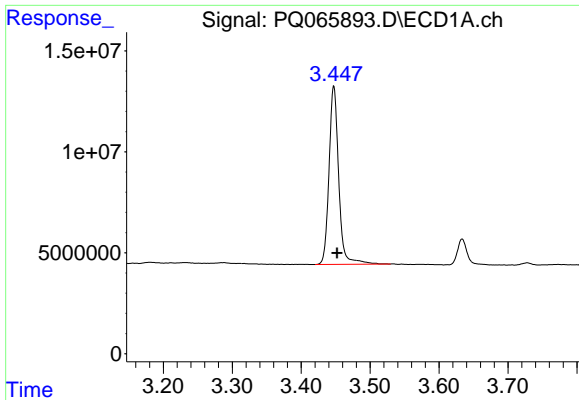
Data Path : Z:\pestpcbsrv\HPCHEM1\ECD_Q\Data\PQ032824\
 Data File : PQ065893.D
 Signal(s) : Signal #1: ECD1A.ch Signal #2: ECD2B.ch
 Acq On : 28 Mar 2024 20:46
 Operator : YP\AJ
 Sample : P1887-02
 Misc :
 ALS Vial : 27 Sample Multiplier: 1

Instrument :
 ECD_Q
 ClientSampleId :
 E0795

Integration File signal 1: autoint1.e
 Integration File signal 2: autoint2.e
 Quant Time: Mar 28 22:39:25 2024
 Quant Method : Z:\pestpcbsrv\HPCHEM1\ECD_Q\Method\PQ030524CLP.M
 Quant Title : GC EXTRACTABLES
 QLast Update : Wed Mar 06 05:19:07 2024
 Response via : Initial Calibration
 Integrator: ChemStation

Volume Inj. : 1 µl
 Signal #1 Phase : ZB MR1 Signal #2 Phase: ZB MR2
 Signal #1 Info : 30Mx0.32mmx 0.5µm Signal #2 Info : 30M x 0.32mm x 0.25µm

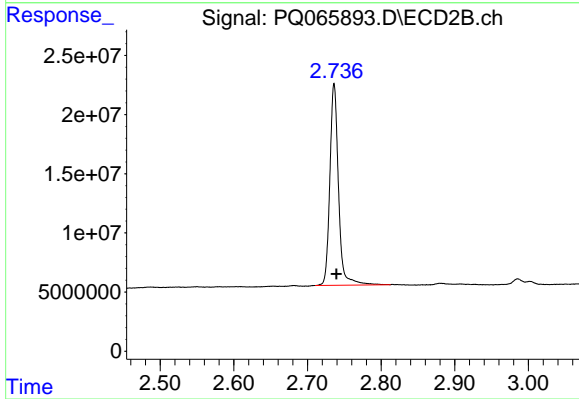




#1 Tetrachloro-m-xylene

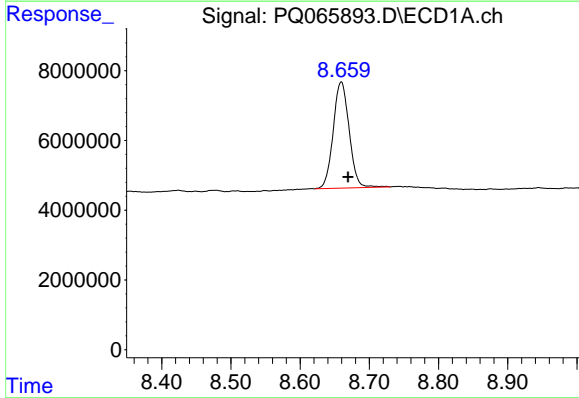
R.T.: 3.447 min
Delta R.T.: -0.005 min
Response: 86189177
Conc: 20.13 ng/ml

Instrument :
ECD_Q
ClientSampleId :
E0795



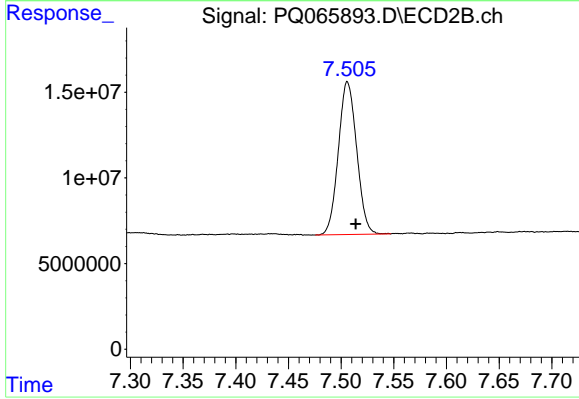
#1 Tetrachloro-m-xylene

R.T.: 2.736 min
Delta R.T.: -0.003 min
Response: 139270702
Conc: 19.93 ng/ml



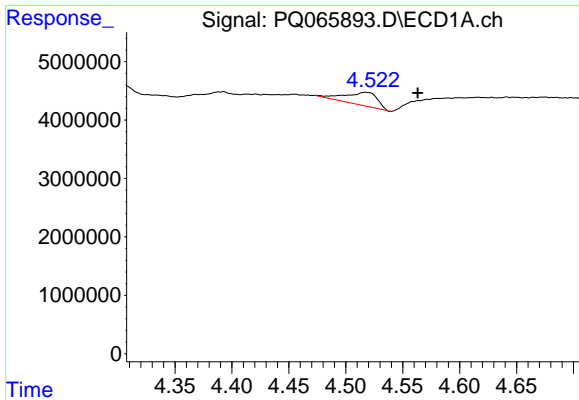
#2 Decachlorobiphenyl

R.T.: 8.660 min
Delta R.T.: -0.010 min
Response: 48928206
Conc: 32.38 ng/ml



#2 Decachlorobiphenyl

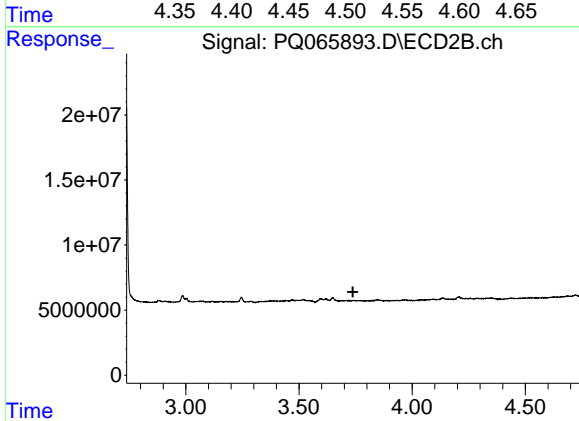
R.T.: 7.506 min
Delta R.T.: -0.008 min
Response: 108032123
Conc: 23.98 ng/ml



#3 AR-1016-1

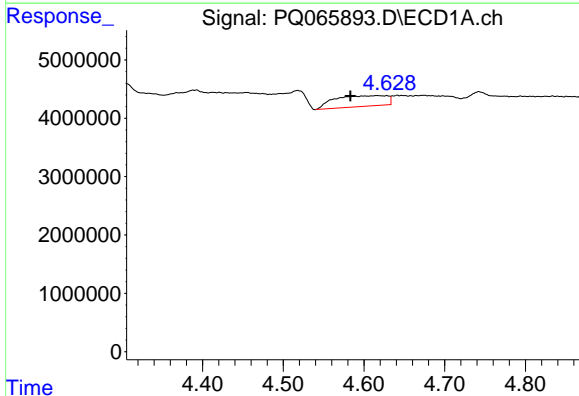
R.T.: 4.518 min
 Delta R.T.: -0.045 min
 Response: 4427773
 Conc: 31.95 ng/ml

Instrument :
 ECD_Q
 ClientSampleId :
 E0795



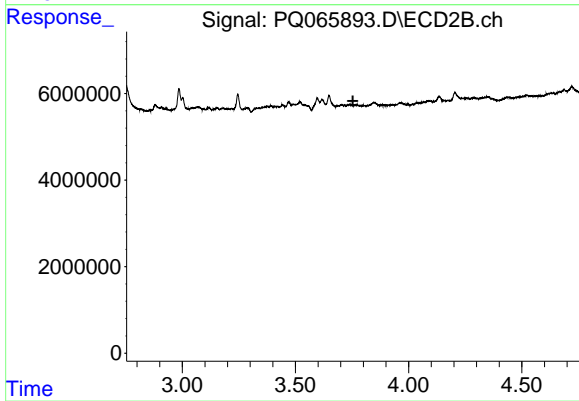
#3 AR-1016-1

R.T.: 0.000 min
 Exp R.T. : 3.738 min
 Response: 0
 Conc: N.D.



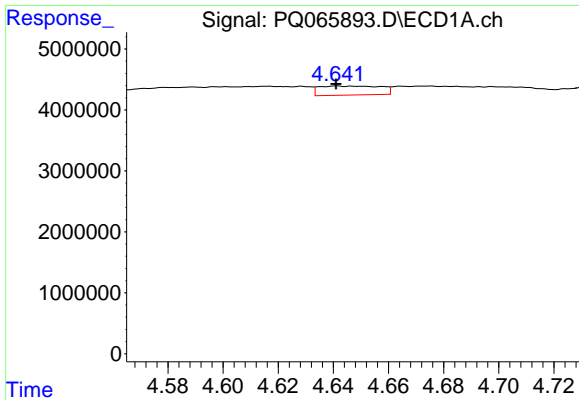
#4 AR-1016-2

R.T.: 4.616 min
 Delta R.T.: 0.033 min
 Response: 8426534
 Conc: 42.30 ng/ml



#4 AR-1016-2

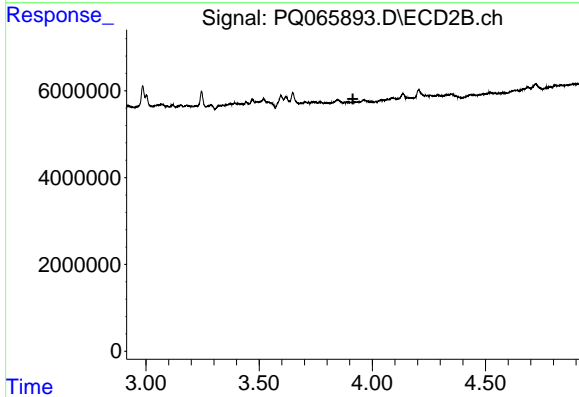
R.T.: 0.000 min
 Exp R.T. : 3.754 min
 Response: 0
 Conc: N.D.



#5 AR-1016-3

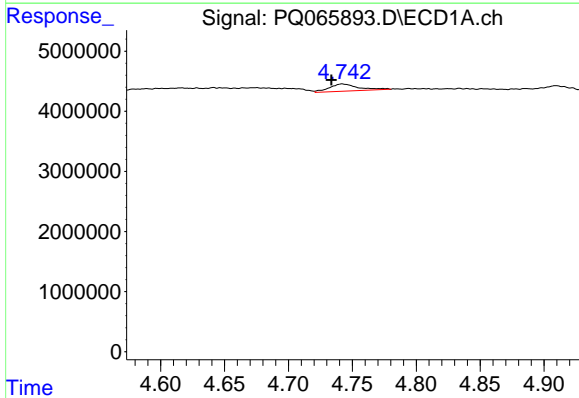
R.T.: 4.641 min
 Delta R.T.: 0.000 min
 Response: 2301669
 Conc: 18.25 ng/ml

Instrument :
 ECD_Q
 ClientSampleId :
 E0795



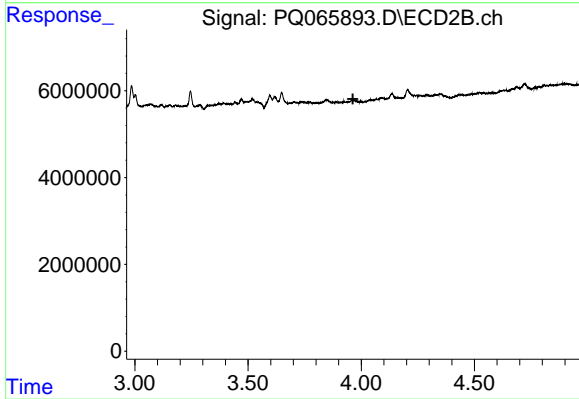
#5 AR-1016-3

R.T.: 0.000 min
 Exp R.T. : 3.914 min
 Response: 0
 Conc: N.D.



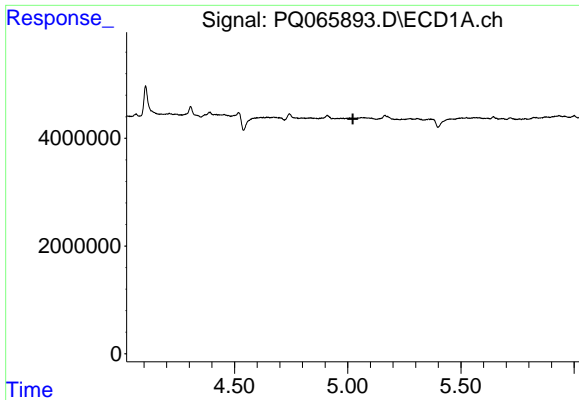
#6 AR-1016-4

R.T.: 4.742 min
 Delta R.T.: 0.009 min
 Response: 1914535
 Conc: 18.42 ng/ml



#6 AR-1016-4

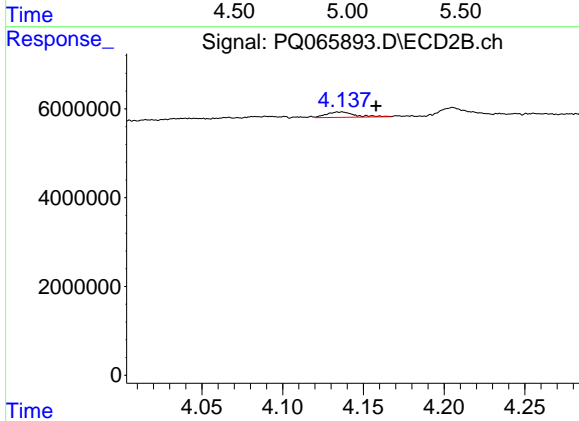
R.T.: 0.000 min
 Exp R.T. : 3.963 min
 Response: 0
 Conc: N.D.



#7 AR-1016-5

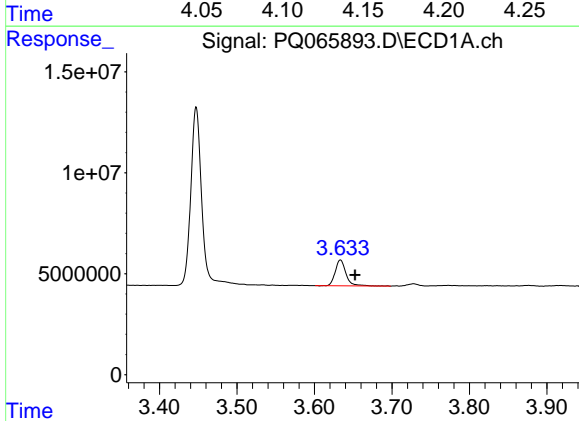
R.T.: 0.000 min
 Exp R.T.: 5.023 min
 Response: 0
 Conc: N.D.

Instrument :
 ECD_Q
 ClientSampleId :
 E0795



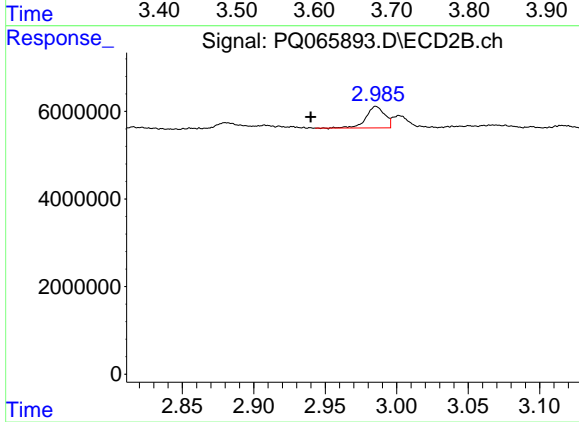
#7 AR-1016-5

R.T.: 4.137 min
 Delta R.T.: -0.021 min
 Response: 1506673
 Conc: 7.36 ng/ml



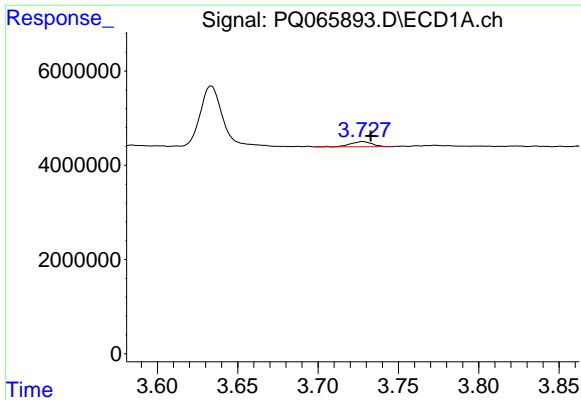
#8 AR-1221-1

R.T.: 3.634 min
 Delta R.T.: -0.019 min
 Response: 12338258
 Conc: 260.48 ng/ml



#8 AR-1221-1

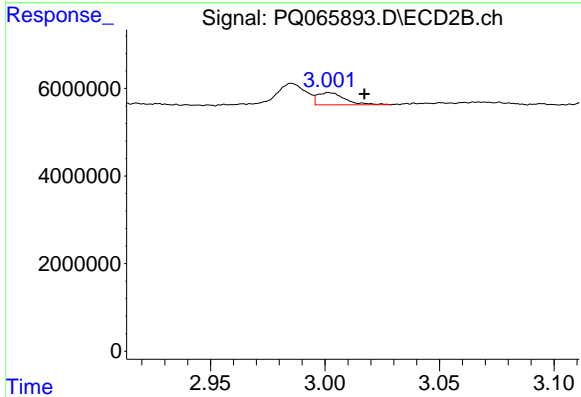
R.T.: 2.985 min
 Delta R.T.: 0.046 min
 Response: 4489260
 Conc: 53.41 ng/ml



#9 AR-1221-2

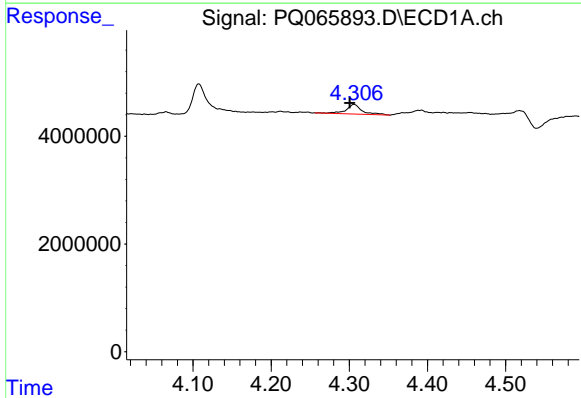
R.T.: 3.728 min
 Delta R.T.: -0.005 min
 Response: 1014912
 Conc: 31.13 ng/ml

Instrument :
 ECD_Q
 ClientSampleId :
 E0795



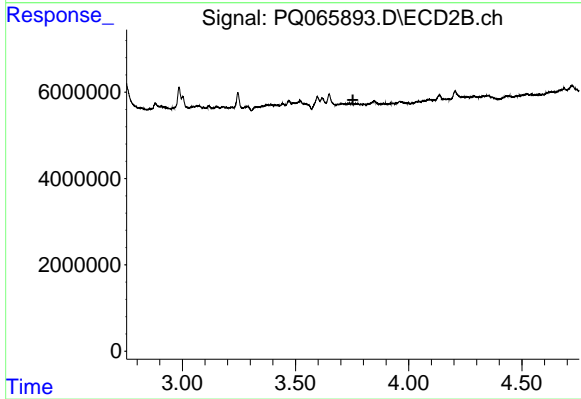
#9 AR-1221-2

R.T.: 3.002 min
 Delta R.T.: -0.016 min
 Response: 2358481
 Conc: 39.34 ng/ml



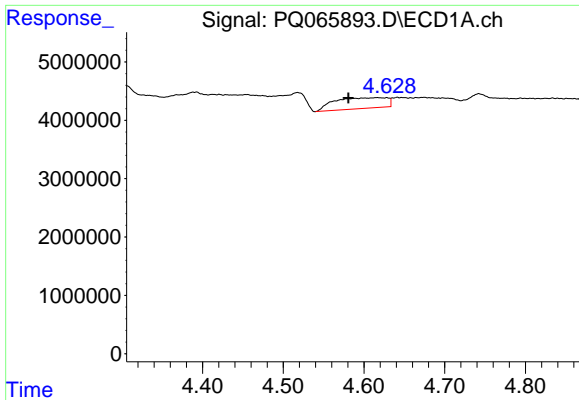
#12 AR-1232-2

R.T.: 4.306 min
 Delta R.T.: 0.006 min
 Response: 2550656
 Conc: 52.25 ng/ml



#12 AR-1232-2

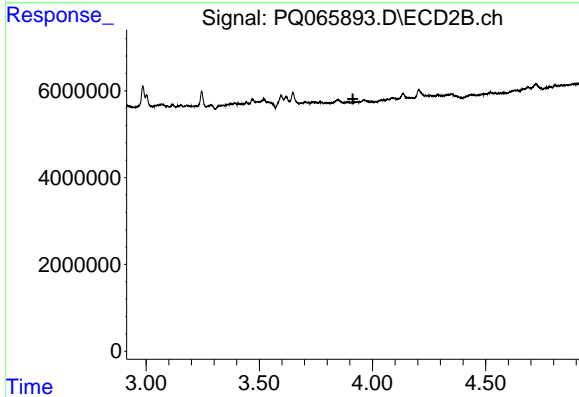
R.T.: 0.000 min
 Exp R.T. : 3.753 min
 Response: 0
 Conc: N.D.



#13 AR-1232-3

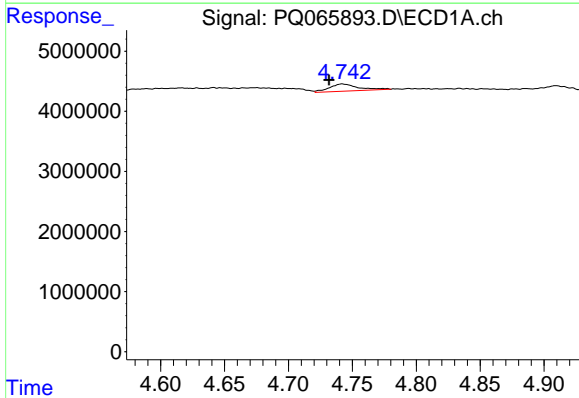
R.T.: 4.616 min
 Delta R.T.: 0.035 min
 Response: 8426534
 Conc: 91.29 ng/ml

Instrument :
 ECD_Q
 ClientSampleId :
 E0795



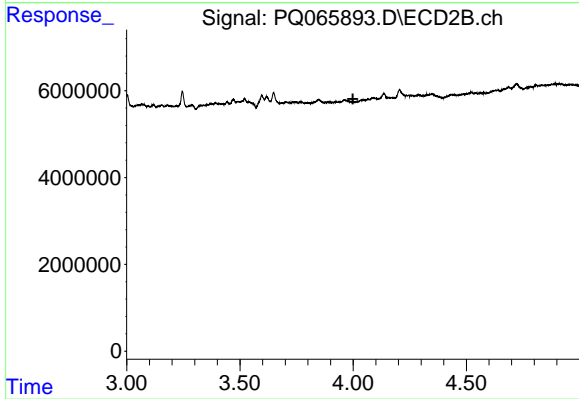
#13 AR-1232-3

R.T.: 0.000 min
 Exp R.T. : 3.914 min
 Response: 0
 Conc: N.D.



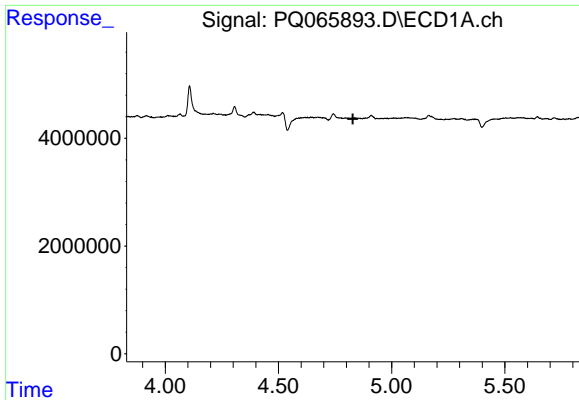
#14 AR-1232-4

R.T.: 4.742 min
 Delta R.T.: 0.010 min
 Response: 1914535
 Conc: 39.70 ng/ml



#14 AR-1232-4

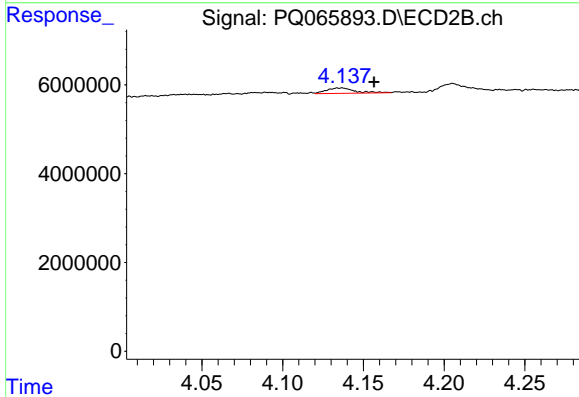
R.T.: 0.000 min
 Exp R.T. : 3.999 min
 Response: 0
 Conc: N.D.



#15 AR-1232-5

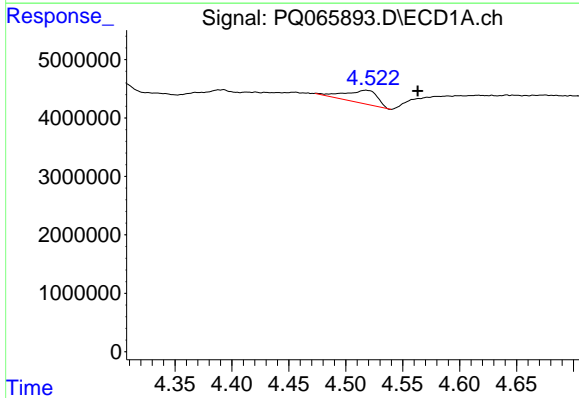
R.T.: 0.000 min
 Exp R.T.: 4.828 min
 Response: 0
 Conc: N.D.

Instrument :
 ECD_Q
 ClientSampleId :
 E0795



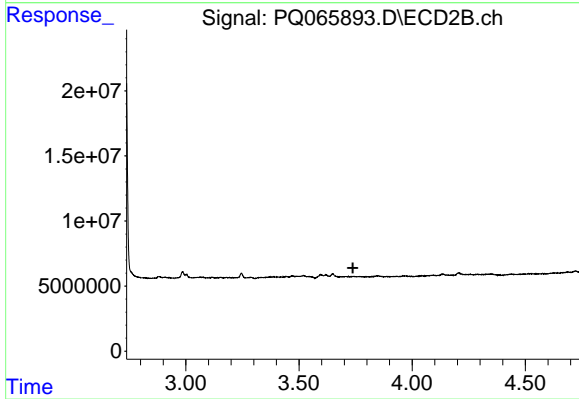
#15 AR-1232-5

R.T.: 4.137 min
 Delta R.T.: -0.020 min
 Response: 1506673
 Conc: 17.40 ng/ml



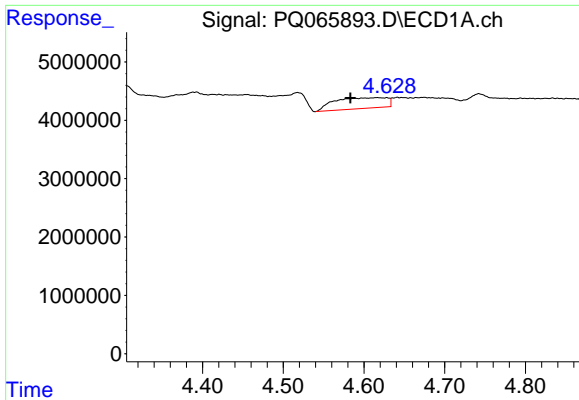
#16 AR-1242-1

R.T.: 4.518 min
 Delta R.T.: -0.045 min
 Response: 4427773
 Conc: 37.35 ng/ml



#16 AR-1242-1

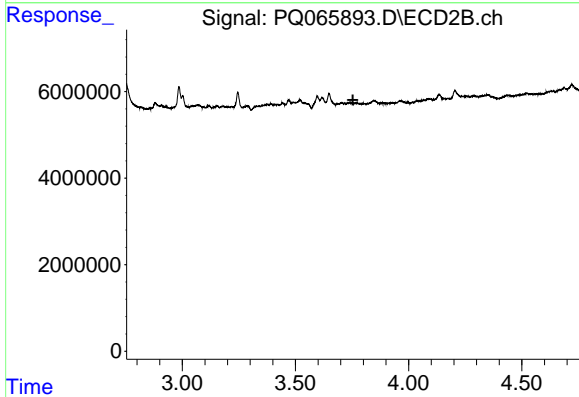
R.T.: 0.000 min
 Exp R.T.: 3.738 min
 Response: 0
 Conc: N.D.



#17 AR-1242-2

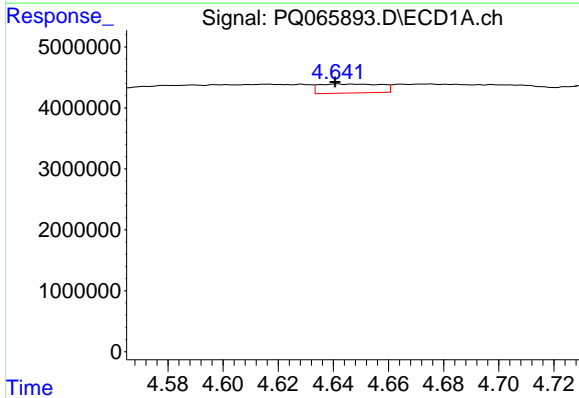
R.T.: 4.616 min
 Delta R.T.: 0.033 min
 Response: 8426534
 Conc: 50.49 ng/ml

Instrument :
 ECD_Q
 ClientSampleId :
 E0795



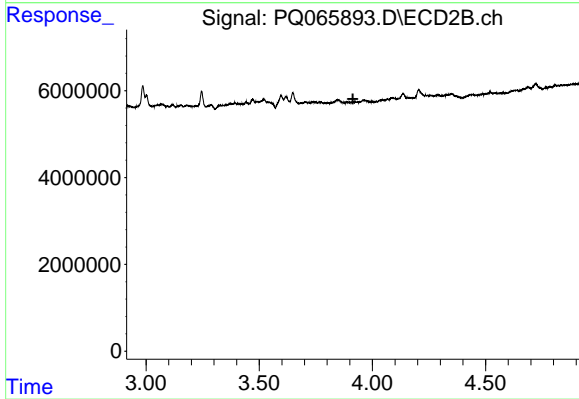
#17 AR-1242-2

R.T.: 0.000 min
 Exp R.T. : 3.754 min
 Response: 0
 Conc: N.D.



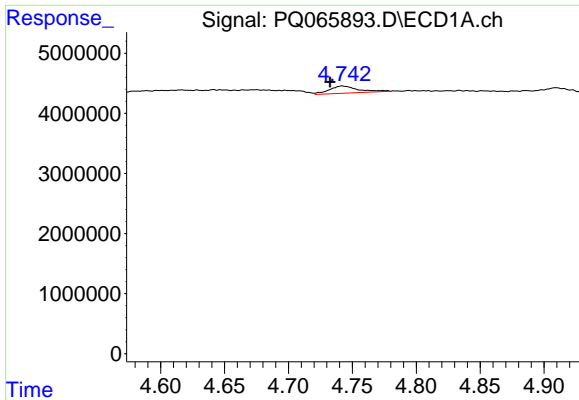
#18 AR-1242-3

R.T.: 4.641 min
 Delta R.T.: 0.000 min
 Response: 2301669
 Conc: 21.75 ng/ml



#18 AR-1242-3

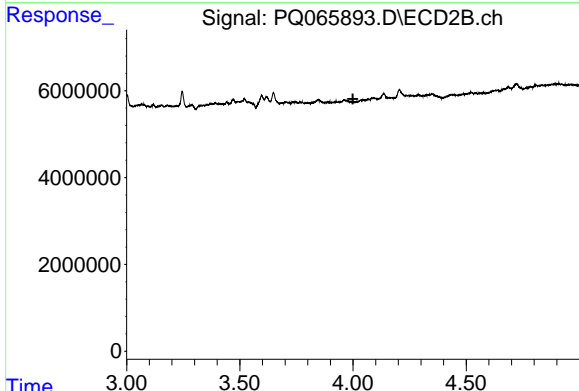
R.T.: 0.000 min
 Exp R.T. : 3.914 min
 Response: 0
 Conc: N.D.



#19 AR-1242-4

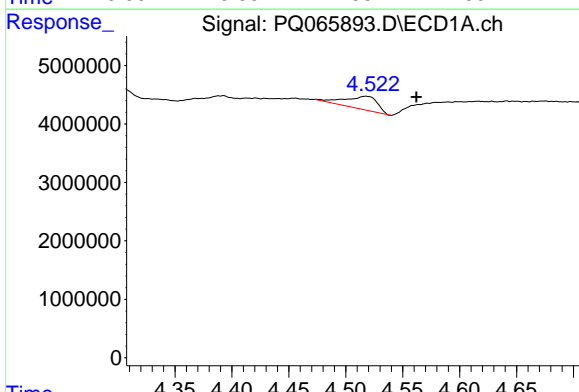
R.T.: 4.742 min
 Delta R.T.: 0.010 min
 Response: 1914535
 Conc: 21.89 ng/ml

Instrument :
 ECD_Q
 ClientSampleId :
 E0795



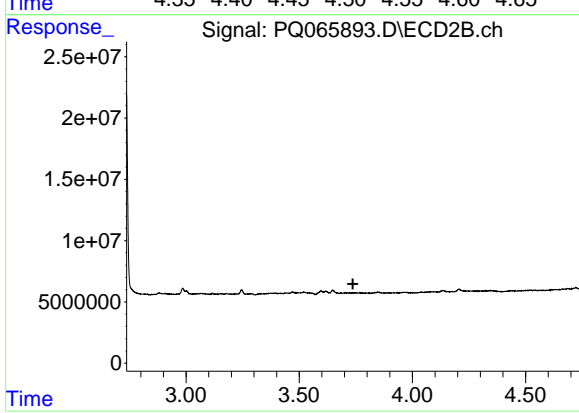
#19 AR-1242-4

R.T.: 0.000 min
 Exp R.T. : 4.000 min
 Response: 0
 Conc: N.D.



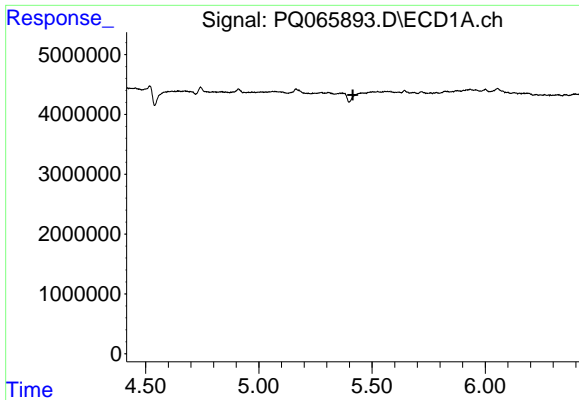
#21 AR-1248-1

R.T.: 4.518 min
 Delta R.T.: -0.044 min
 Response: 4427773
 Conc: 50.07 ng/ml



#21 AR-1248-1

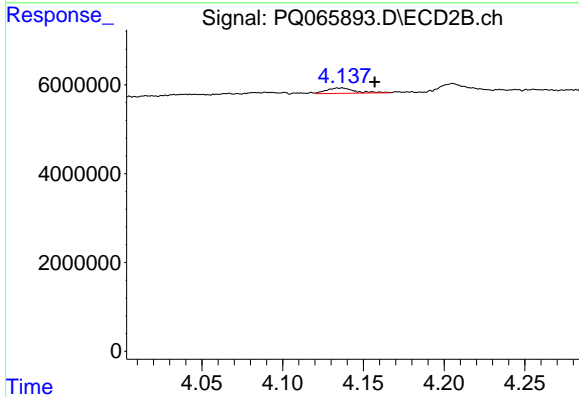
R.T.: 0.000 min
 Exp R.T. : 3.737 min
 Response: 0
 Conc: N.D.



#24 AR-1248-4

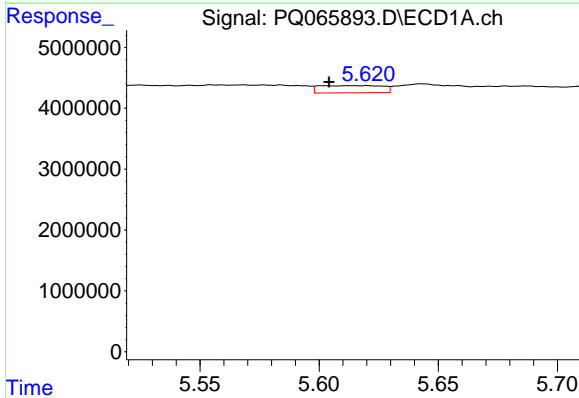
R.T.: 0.000 min
 Exp R.T.: 5.415 min
 Response: 0
 Conc: N.D.

Instrument :
 ECD_Q
 ClientSampleId :
 E0795



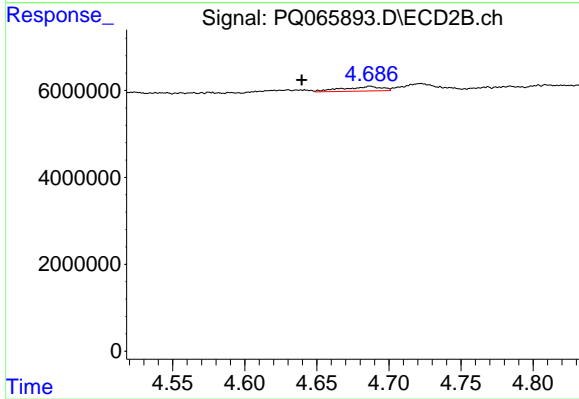
#24 AR-1248-4

R.T.: 4.137 min
 Delta R.T.: -0.020 min
 Response: 1506673
 Conc: 5.48 ng/ml



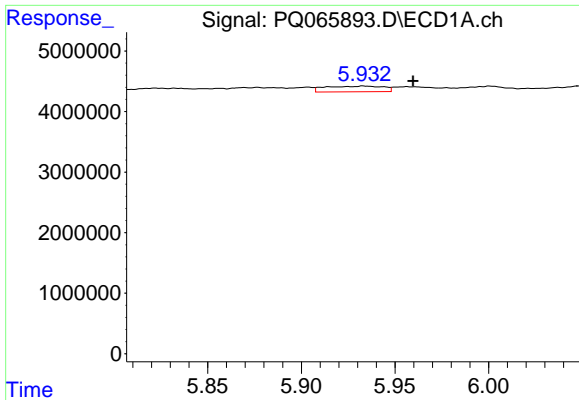
#27 AR-1254-2

R.T.: 5.620 min
 Delta R.T.: 0.015 min
 Response: 2192816
 Conc: 9.38 ng/ml



#27 AR-1254-2

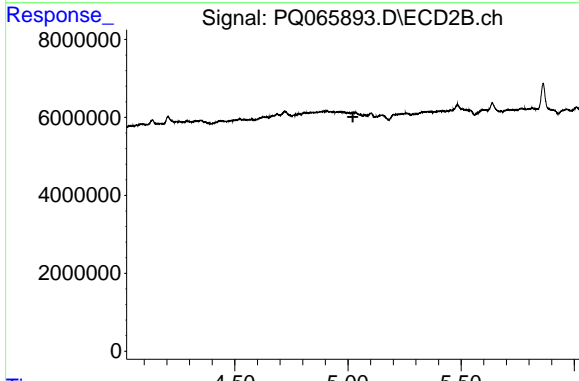
R.T.: 4.687 min
 Delta R.T.: 0.047 min
 Response: 1951883
 Conc: 5.34 ng/ml



#28 AR-1254-3

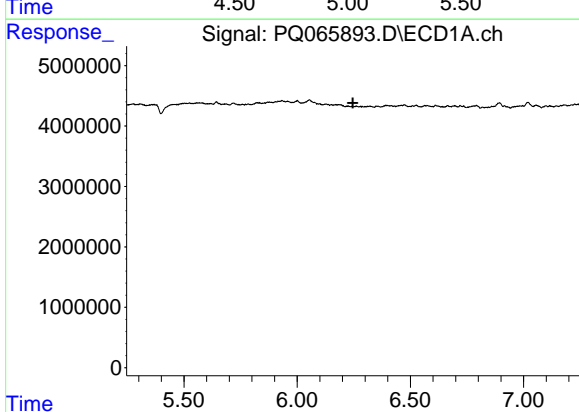
R.T.: 5.933 min
 Delta R.T.: -0.026 min
 Response: 2026866
 Conc: 8.32 ng/ml

Instrument :
 ECD_Q
 ClientSampleId :
 E0795



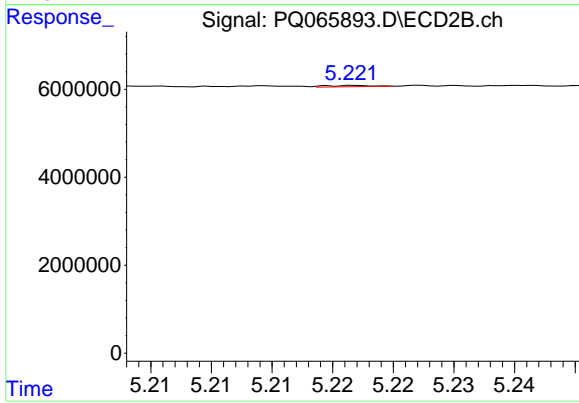
#28 AR-1254-3

R.T.: 0.000 min
 Exp R.T. : 5.022 min
 Response: 0
 Conc: N.D.



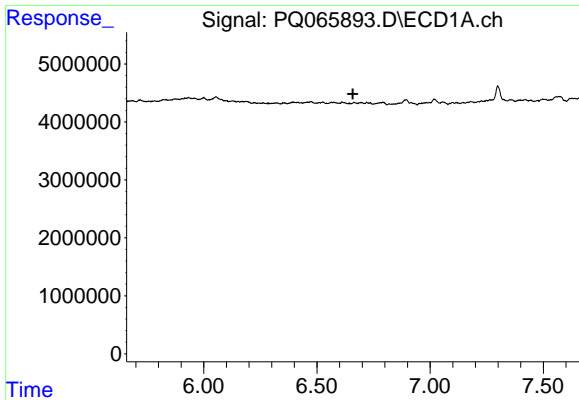
#29 AR-1254-4

R.T.: 0.000 min
 Exp R.T. : 6.246 min
 Response: 0
 Conc: N.D.



#29 AR-1254-4

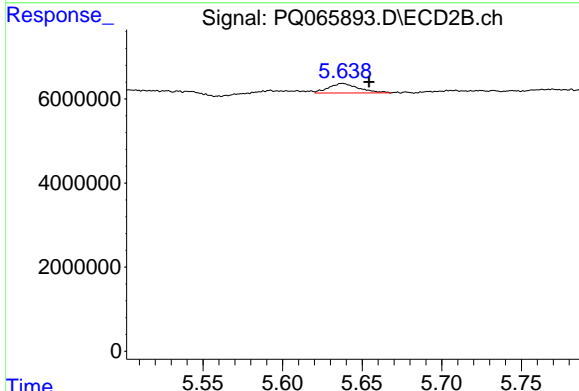
R.T.: 5.222 min
 Delta R.T.: -0.026 min
 Response: 71661
 Conc: 0.19 ng/ml



#30 AR-1254-5

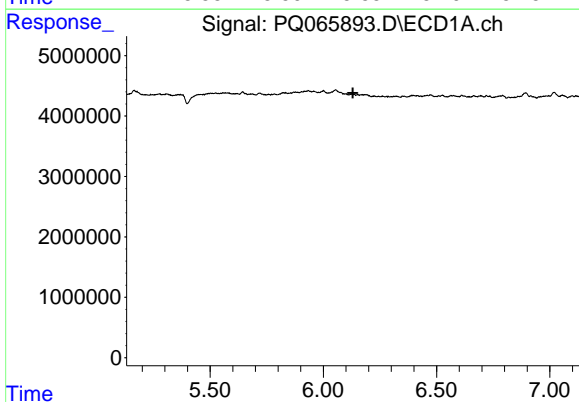
R.T.: 0.000 min
 Exp R.T.: 6.659 min
 Response: 0
 Conc: N.D.

Instrument :
 ECD_Q
 ClientSampleId :
 E0795



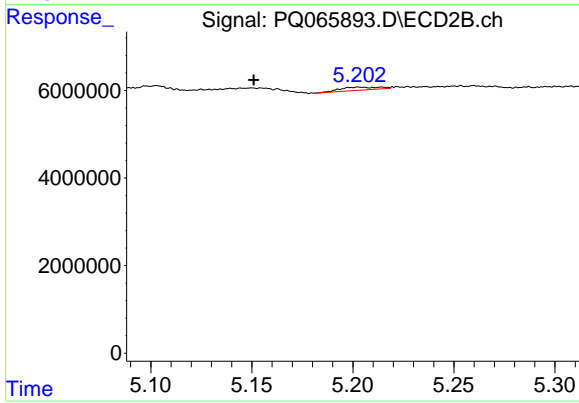
#30 AR-1254-5

R.T.: 5.638 min
 Delta R.T.: -0.017 min
 Response: 2998953
 Conc: 5.55 ng/ml



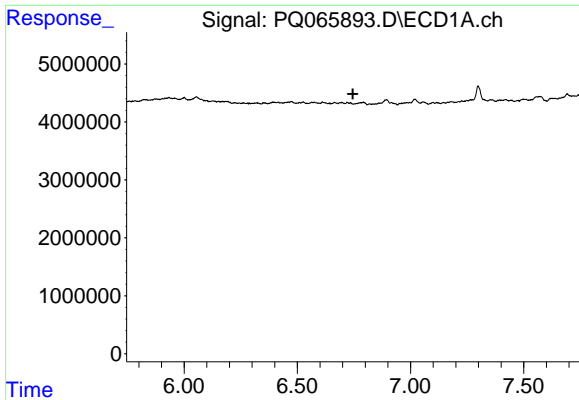
#31 AR-1260-1

R.T.: 0.000 min
 Exp R.T.: 6.131 min
 Response: 0
 Conc: N.D.



#31 AR-1260-1

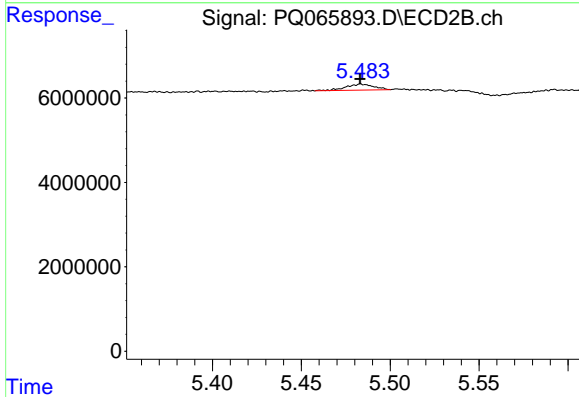
R.T.: 5.214 min
 Delta R.T.: 0.064 min
 Response: 916754
 Conc: 2.23 ng/ml



#33 AR-1260-3

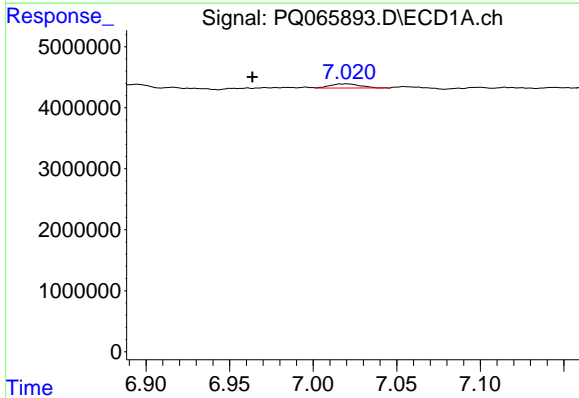
R.T.: 0.000 min
 Exp R.T.: 6.746 min
 Response: 0
 Conc: N.D.

Instrument :
 ECD_Q
 ClientSampleId :
 E0795



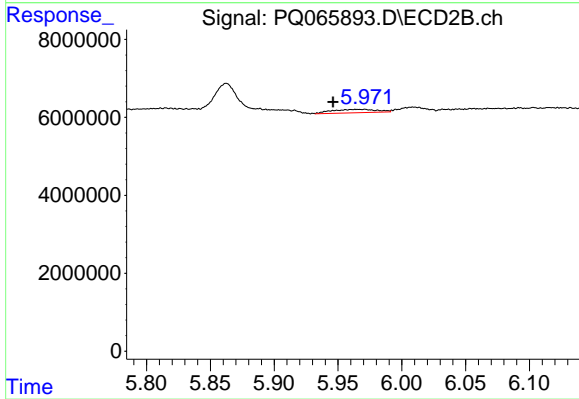
#33 AR-1260-3

R.T.: 5.483 min
 Delta R.T.: 0.000 min
 Response: 1549194
 Conc: 3.31 ng/ml



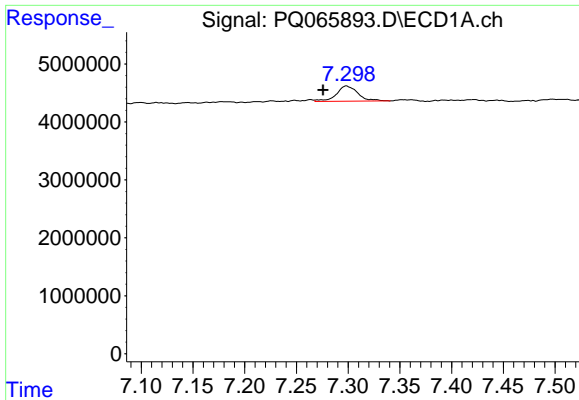
#34 AR-1260-4

R.T.: 7.020 min
 Delta R.T.: 0.056 min
 Response: 843242
 Conc: 4.99 ng/ml



#34 AR-1260-4

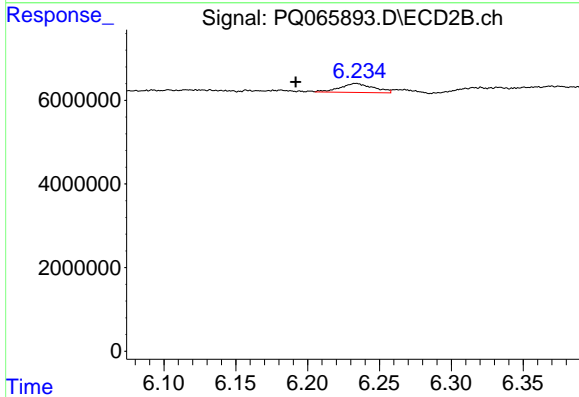
R.T.: 5.971 min
 Delta R.T.: 0.025 min
 Response: 2186465
 Conc: 5.62 ng/ml



#35 AR-1260-5

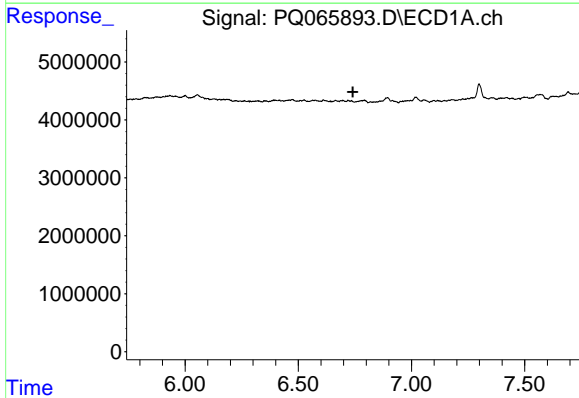
R.T.: 7.298 min
 Delta R.T.: 0.022 min
 Response: 3787845
 Conc: 11.47 ng/ml

Instrument :
 ECD_Q
 ClientSampleId :
 E0795



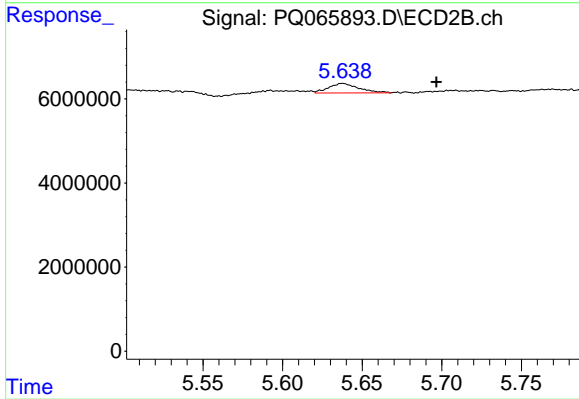
#35 AR-1260-5

R.T.: 6.233 min
 Delta R.T.: 0.042 min
 Response: 3494451
 Conc: 3.78 ng/ml



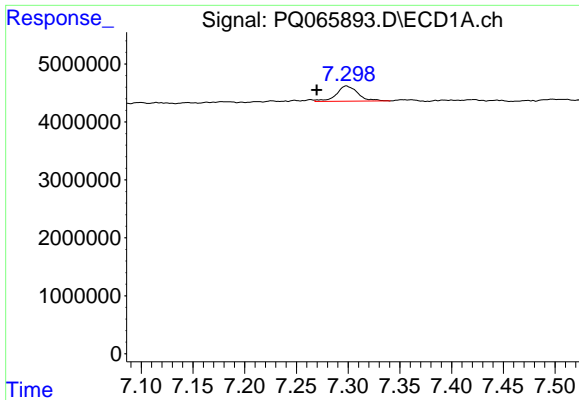
#36 AR-1262-1

R.T.: 0.000 min
 Exp R.T. : 6.741 min
 Response: 0
 Conc: N.D.



#36 AR-1262-1

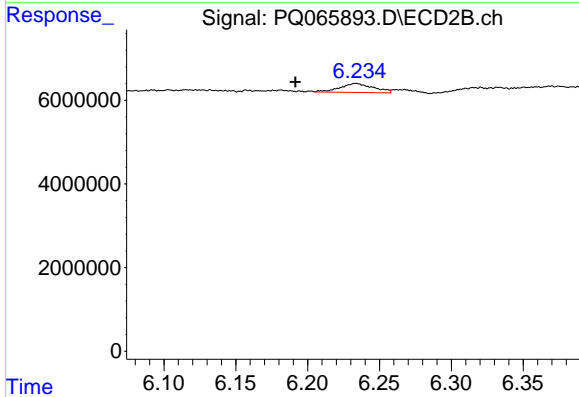
R.T.: 5.638 min
 Delta R.T.: -0.059 min
 Response: 2998953
 Conc: 5.33 ng/ml



#37 AR-1262-2

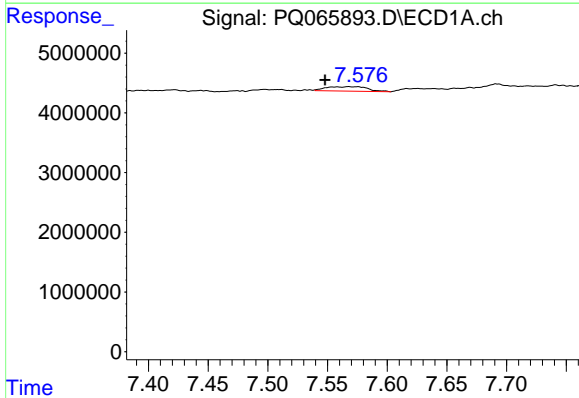
R.T.: 7.298 min
 Delta R.T.: 0.028 min
 Response: 3787845
 Conc: 10.40 ng/ml

Instrument :
 ECD_Q
 ClientSampleId :
 E0795



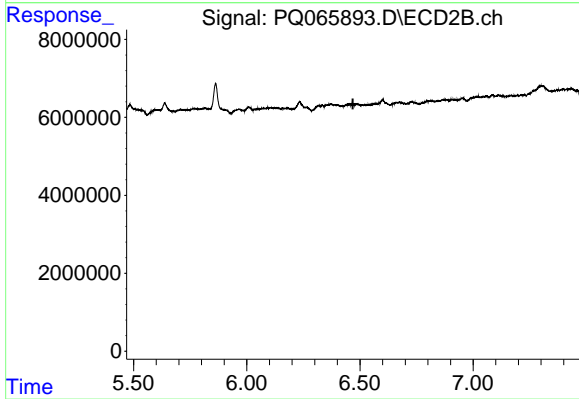
#37 AR-1262-2

R.T.: 6.233 min
 Delta R.T.: 0.042 min
 Response: 3494451
 Conc: 3.48 ng/ml



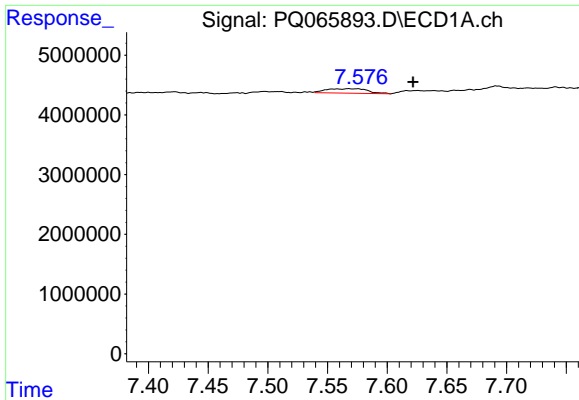
#38 AR-1262-3

R.T.: 7.568 min
 Delta R.T.: 0.020 min
 Response: 1766478
 Conc: 7.34 ng/ml



#38 AR-1262-3

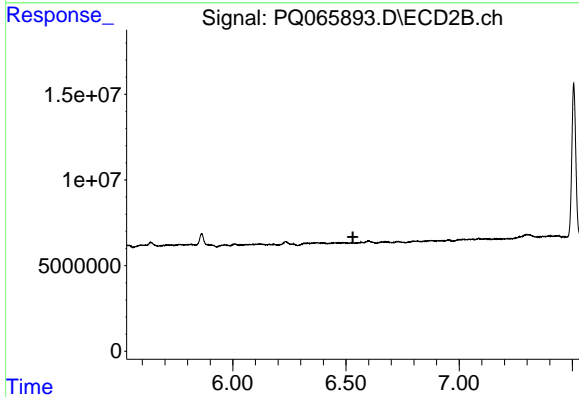
R.T.: 0.000 min
 Exp R.T. : 6.469 min
 Response: 0
 Conc: N.D.



#39 AR-1262-4

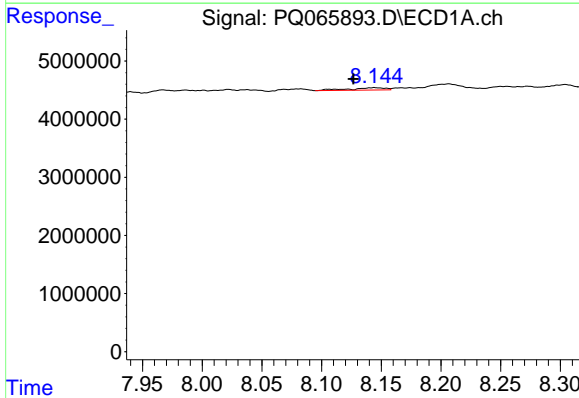
R.T.: 7.568 min
 Delta R.T.: -0.054 min
 Response: 1766478
 Conc: 9.62 ng/ml

Instrument :
 ECD_Q
 ClientSampleId :
 E0795



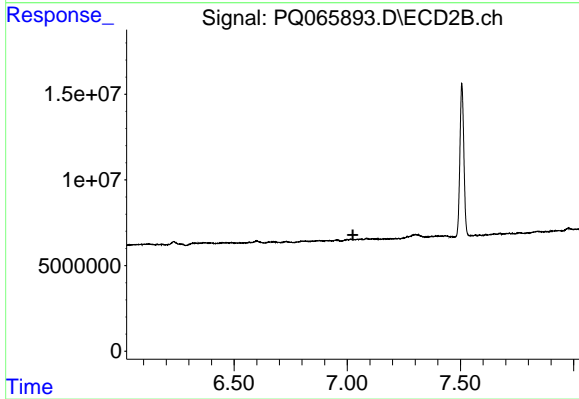
#39 AR-1262-4

R.T.: 0.000 min
 Exp R.T. : 6.531 min
 Response: 0
 Conc: N.D.



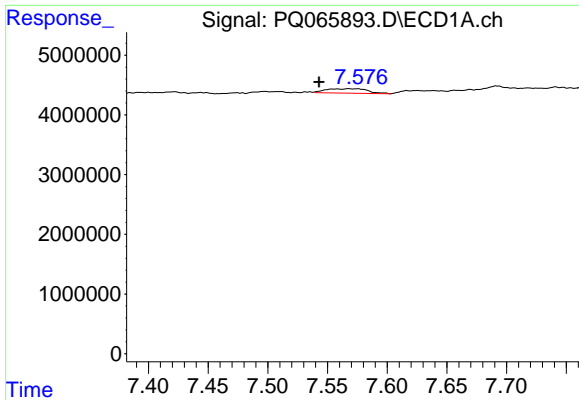
#40 AR-1262-5

R.T.: 8.144 min
 Delta R.T.: 0.018 min
 Response: 884458
 Conc: 7.25 ng/ml



#40 AR-1262-5

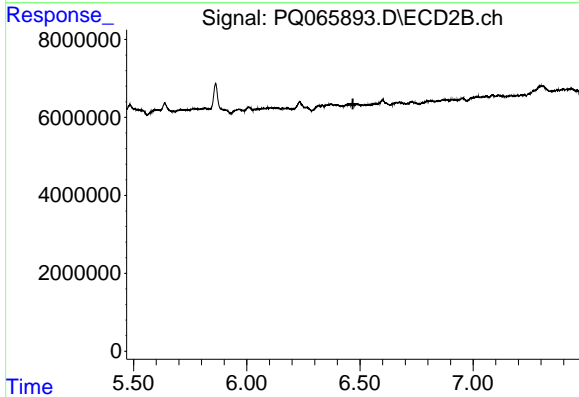
R.T.: 0.000 min
 Exp R.T. : 7.025 min
 Response: 0
 Conc: N.D.



#41 AR-1268-1

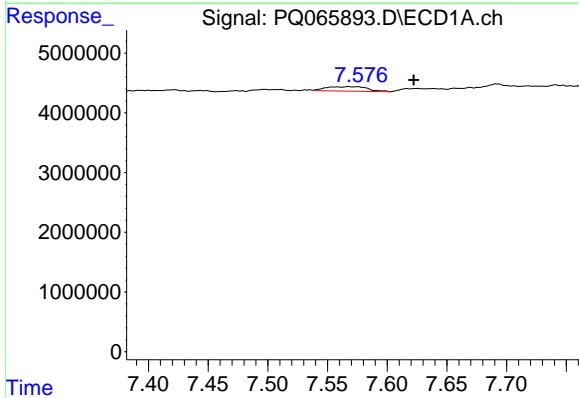
R.T.: 7.568 min
 Delta R.T.: 0.025 min
 Response: 1766478
 Conc: 4.47 ng/ml

Instrument :
 ECD_Q
 ClientSampleId :
 E0795



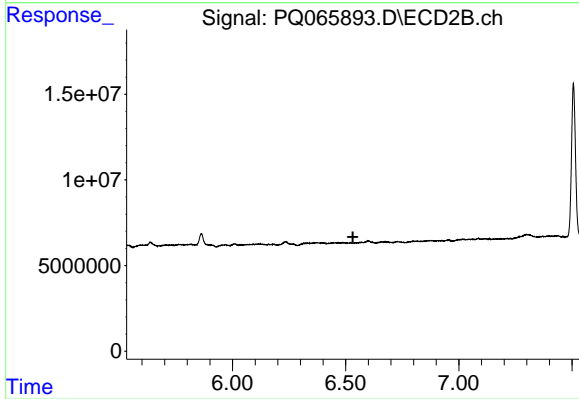
#41 AR-1268-1

R.T.: 0.000 min
 Exp R.T. : 6.469 min
 Response: 0
 Conc: N.D.



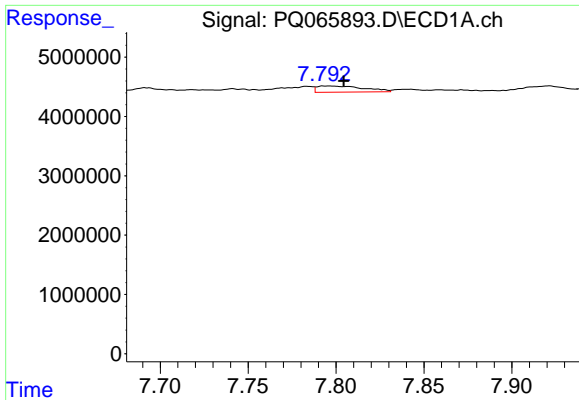
#42 AR-1268-2

R.T.: 7.568 min
 Delta R.T.: -0.055 min
 Response: 1766478
 Conc: 4.92 ng/ml



#42 AR-1268-2

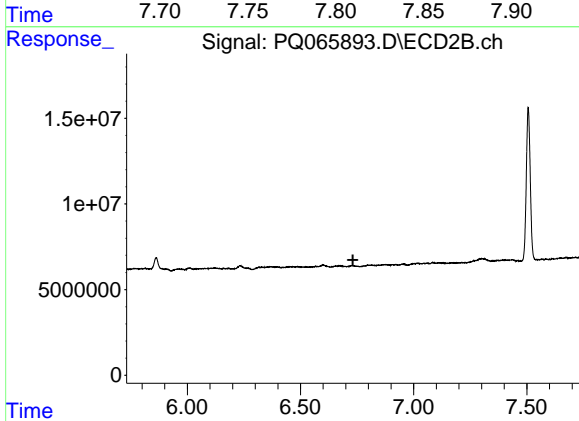
R.T.: 0.000 min
 Exp R.T. : 6.532 min
 Response: 0
 Conc: N.D.



#43 AR-1268-3

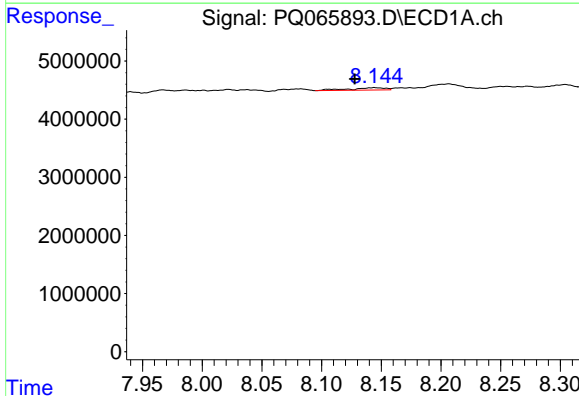
R.T.: 7.796 min
 Delta R.T.: -0.009 min
 Response: 1948904
 Conc: 6.52 ng/ml

Instrument :
 ECD_Q
 ClientSampleId :
 E0795



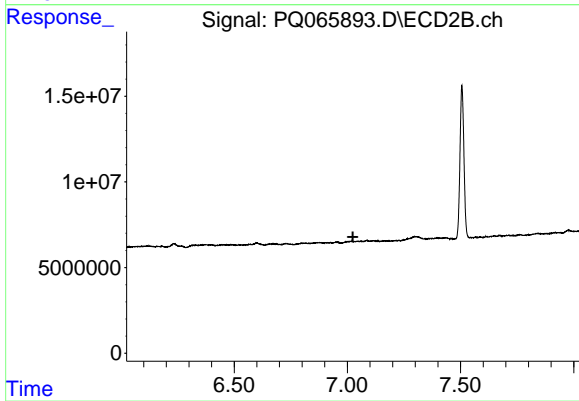
#43 AR-1268-3

R.T.: 0.000 min
 Exp R.T. : 6.732 min
 Response: 0
 Conc: N.D.



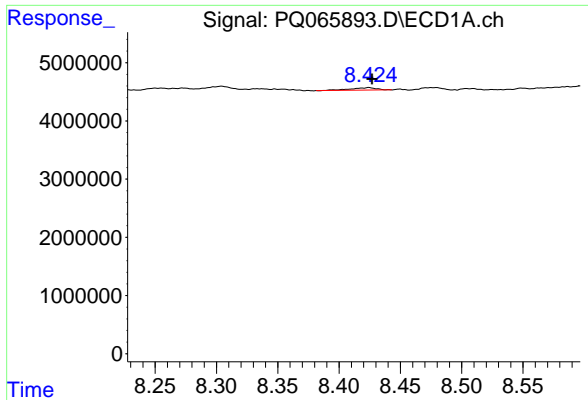
#44 AR-1268-4

R.T.: 8.144 min
 Delta R.T.: 0.017 min
 Response: 884458
 Conc: 6.87 ng/ml



#44 AR-1268-4

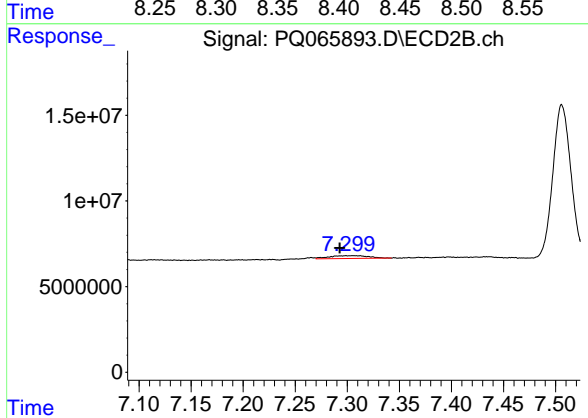
R.T.: 0.000 min
 Exp R.T. : 7.024 min
 Response: 0
 Conc: N.D.



#45 AR-1268-5

R.T.: 8.424 min
Delta R.T.: -0.002 min
Response: 625087
Conc: 0.70 ng/ml

Instrument :
ECD_Q
ClientSampleId :
E0795



#45 AR-1268-5

R.T.: 7.299 min
Delta R.T.: 0.006 min
Response: 4350006
Conc: 1.79 ng/ml