

Data Path : Z:\pestpcbsrv\HPCHEM1\ECD_Q\Data\PQ032919\
 Data File : PQ038513.D
 Signal(s) : Signal #1: ECD1A.ch Signal #2: ECD2B.ch
 Acq On : 29 Mar 2019 08:06
 Operator : SM\SJ
 Sample : AR1660CCC400
 Misc :
 ALS Vial : 3 Sample Multiplier: 1

Instrument :
 ECD_Q
 ClientSampleId :
 AR1660395

Integration File signal 1: autoint1.e
 Integration File signal 2: autoint2.e
 Quant Time: Mar 29 22:28:29 2019
 Quant Method : Z:\pestpcbsrv\HPCHEM1\ECD_Q\Method\PQ032419CLP.M
 Quant Title : GC EXTRACTABLES
 QLast Update : Mon Mar 25 05:45:22 2019
 Response via : Initial Calibration
 Integrator: ChemStation

Volume Inj. : 1 µl
 Signal #1 Phase : ZB MR1 Signal #2 Phase: ZB MR2
 Signal #1 Info : 30Mx0.32mmx 0.5µm Signal #2 Info : 30M x 0.32mm x 0.25µm

Compound	RT#1	RT#2	Resp#1	Resp#2	ng/ml	ng/ml
System Monitoring Compounds						
1) SA Tetrachlo...	4.721	3.998	79149179	33523598	19.204	19.863
2) SA Decachlor...	10.672	9.127	230.4E6	104.5E6	42.350	44.174
Target Compounds						
3) L1 AR-1016-1	5.901	5.121	91191240	65431771	381.876	612.434 #
4) L1 AR-1016-2	5.924	5.153	137.0E6	3870346	377.417	24.984 #
5) L1 AR-1016-3	5.988	5.339	87398401	29291257	392.639	365.301
6) L1 AR-1016-4	6.088	5.383	71967359	36345423	390.379	572.414 #
7) L1 AR-1016-5	6.383	5.599	75155293	16169315	407.159	184.606 #
8) L2 AR-1221-1	4.926	4.213	7095257	2971509	132.366	127.309
9) L2 AR-1221-2	5.018	4.302	9491207	4004373	248.724	240.538
10) L2 AR-1221-3	5.096	4.381	43348604	19279483	332.443	338.908
11) L3 AR-1232-1	5.096	4.381	43348604	19279483	450.930	471.560
12) L3 AR-1232-2	5.633	5.153	65879153	3870346	1271.785	86.720 #
13) L3 AR-1232-3	5.924	5.339	137.0E6	29291257	1290.972	1217.377
14) L3 AR-1232-4	6.088	5.415	71967359	16865221	1358.114	746.721 #
15) L3 AR-1232-5	6.175	5.599	63045624	16169315	1549.629	668.032 #
16) L4 AR-1242-1	5.901	5.121	91191240	65431771	595.787	929.231 #
17) L4 AR-1242-2	5.924	5.153	137.0E6	3870346	599.685	38.413 #
18) L4 AR-1242-3	5.988	5.339	87398401	29291257	608.905	547.153
19) L4 AR-1242-4	6.088	5.415	71967359	16865221	623.945	310.708 #
20) L4 AR-1242-5	6.829	5.953	21621251	8879916	162.775	120.801 #
21) L5 AR-1248-1	5.901	5.121	91191240	65431771	847.583	1303.924 #
22) L5 AR-1248-2	6.175	5.383	63045624	36345423	386.736	510.046 #
23) L5 AR-1248-3	6.383	5.415	75155293	16865221	410.936	230.234 #
24) L5 AR-1248-4	6.788	5.599	23864716	16169315	113.826	178.820 #
25) L5 AR-1248-5	6.829	5.999	21621251	5275516	107.276	58.801 #
26) L6 AR-1254-1	6.761	5.953	70153196	8879916	292.142	55.230 #
27) L6 AR-1254-2	6.979	6.130	61451557	-9340329	162.939	N.D. #
28) L6 AR-1254-3	7.351	6.479	30856449	73418268	76.004	305.358 #
29) L6 AR-1254-4	7.637	6.720	21796287	19361230	77.433	124.935 #
30) L6 AR-1254-5	8.057	7.150	228.4E6	90212317	707.480	444.998 #
31) L7 AR-1260-1	7.513	6.652	160.0E6	2065052	376.117	10.100 #
32) L7 AR-1260-2	7.769	6.781	191.0E6	112.0E6	372.137	437.242
33) L7 AR-1260-3	8.132	7.023	143.7E6	3555834	371.423	14.864 #
34) L7 AR-1260-4	8.373	7.456	169.2E6	9124108	371.042	46.096 #
35) L7 AR-1260-5	8.714	7.708	344.8E6	4413844	364.085	8.977 #
36) L8 AR-1262-1	8.132	7.204	143.7E6	43552601	362.455	202.263 #
37) L8 AR-1262-2	8.714	7.708	344.8E6	4413844	483.347	11.329 #
38) L8 AR-1262-3	9.069	8.004	218.7E6	151.7E6	456.845	1018.821 #
39) L8 AR-1262-4	9.129	8.004	134.1E6	151.7E6	354.360	532.156 #
40) L8 AR-1262-5	9.855	8.573	97147823	2718660	395.286	23.002 #
41) L9 AR-1268-1	9.069	7.939	218.7E6	38958097	137.915	48.652 #

Data Path : Z:\pestpcbsrv\HPCHEM1\ECD_Q\Data\PQ032919\
 Data File : PQ038513.D
 Signal(s) : Signal #1: ECD1A.ch Signal #2: ECD2B.ch
 Acq On : 29 Mar 2019 08:06
 Operator : SM\SJ
 Sample : AR1660CCC400
 Misc :
 ALS Vial : 3 Sample Multiplier: 1

Instrument :
 ECD_Q
 ClientSampleId :
 AR1660395

Integration File signal 1: autoint1.e
 Integration File signal 2: autoint2.e
 Quant Time: Mar 29 22:28:29 2019
 Quant Method : Z:\pestpcbsrv\HPCHEM1\ECD_Q\Method\PQ032419CLP.M
 Quant Title : GC EXTRACTABLES
 QLast Update : Mon Mar 25 05:45:22 2019
 Response via : Initial Calibration
 Integrator: ChemStation

Volume Inj. : 1 µl
 Signal #1 Phase : ZB MR1 Signal #2 Phase: ZB MR2
 Signal #1 Info : 30Mx0.32mmx 0.5µm Signal #2 Info : 30M x 0.32mm x 0.25µm

	Compound	RT#1	RT#2	Resp#1	Resp#2	ng/ml	ng/ml
42)	L9 AR-1268-2	9.129	8.004	134.1E6	151.7E6	92.283	208.975 #
43)	L9 AR-1268-3	9.395	8.263	6130987	2845327	4.756	4.522
44)	L9 AR-1268-4	9.855	8.573	97147823	2718660	203.392	11.547 #
45)	L9 AR-1268-5	10.304	8.843	25922635	11842856	6.018	6.150

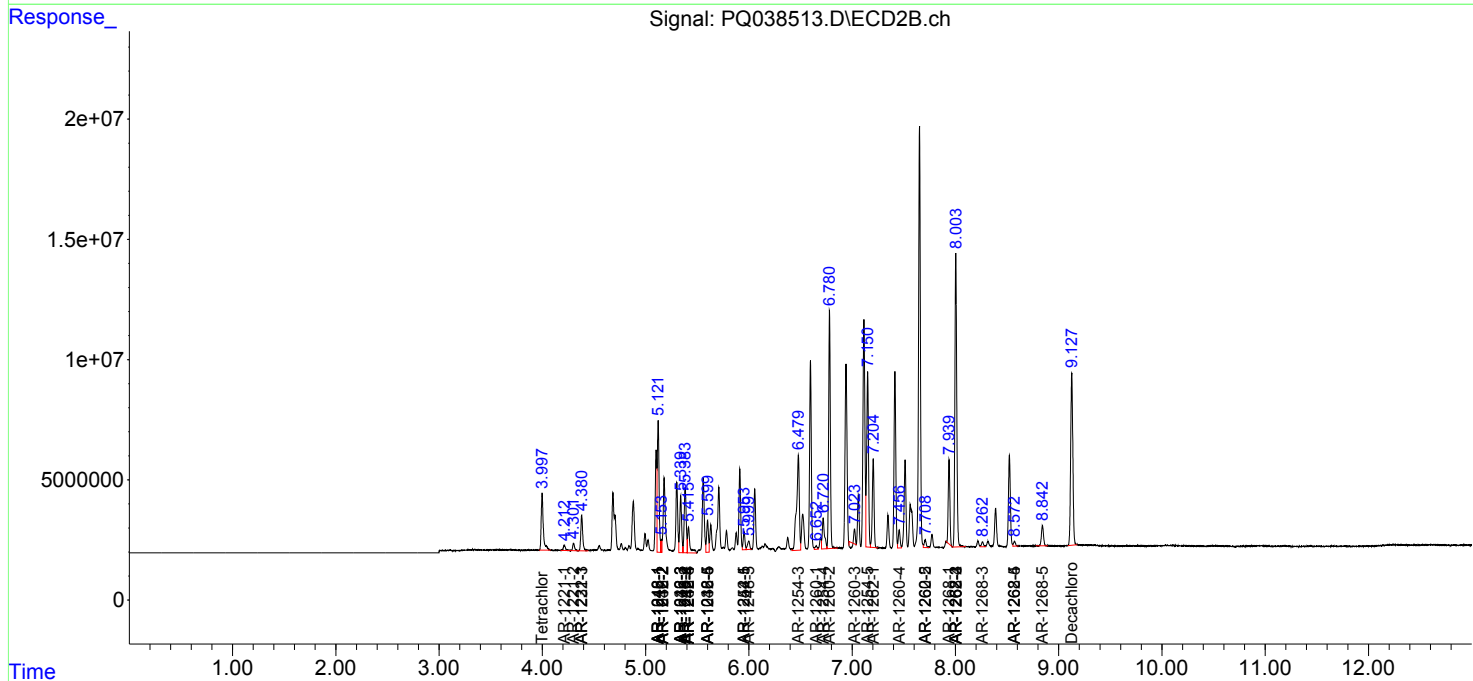
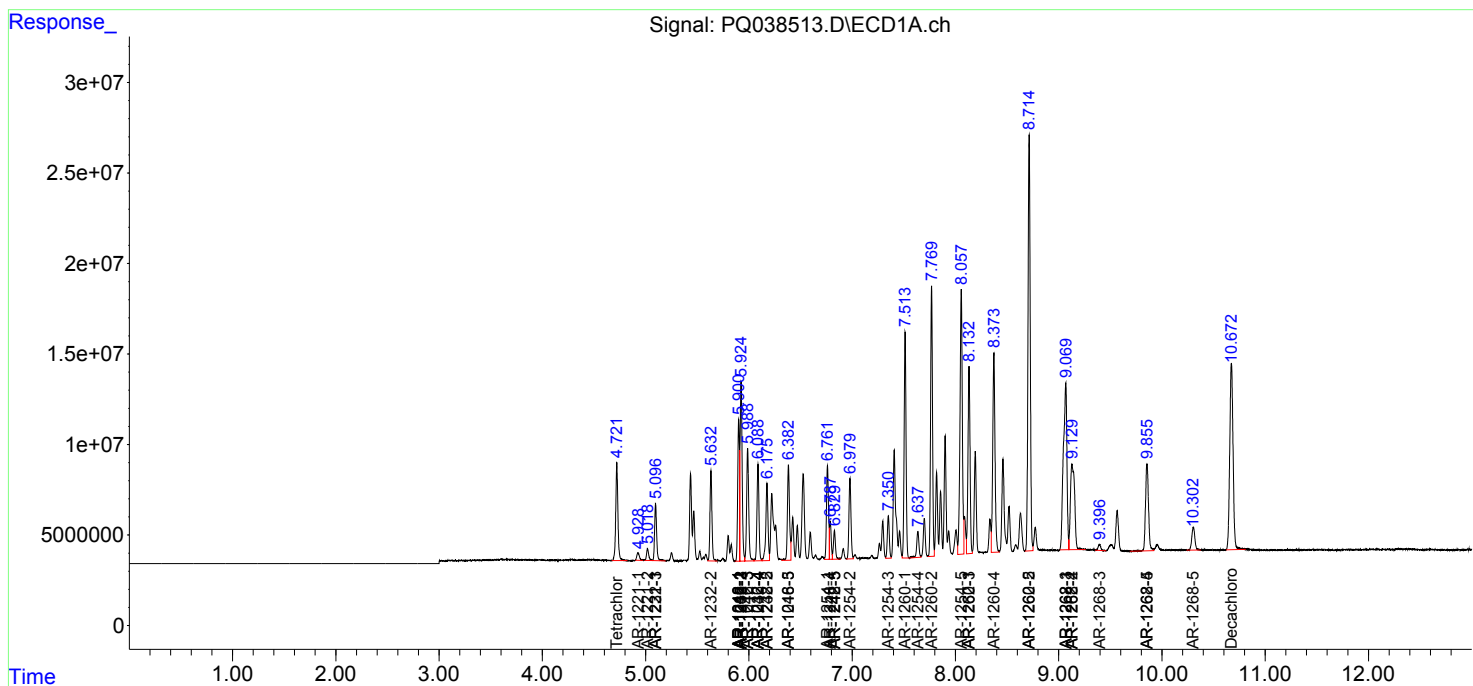
(f)=RT Delta > 1/2 Window (#)=Amounts differ by > 25% (m)=manual int.

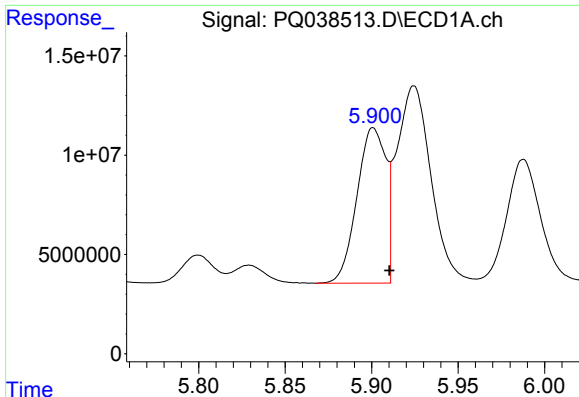
Data Path : Z:\pestpcbsrv\HPCHEM1\ECD_Q\Data\PQ032919\
 Data File : PQ038513.D
 Signal(s) : Signal #1: ECD1A.ch Signal #2: ECD2B.ch
 Acq On : 29 Mar 2019 08:06
 Operator : SM\SJ
 Sample : AR1660CCC400
 Misc :
 ALS Vial : 3 Sample Multiplier: 1

Instrument :
 ECD_Q
 ClientSampled :
 AR1660395

Integration File signal 1: autoint1.e
 Integration File signal 2: autoint2.e
 Quant Time: Mar 29 22:28:29 2019
 Quant Method : Z:\pestpcbsrv\HPCHEM1\ECD_Q\Method\PQ032419CLP.M
 Quant Title : GC EXTRACTABLES
 QLast Update : Mon Mar 25 05:45:22 2019
 Response via : Initial Calibration
 Integrator: ChemStation

Volume Inj. : 1 µl
 Signal #1 Phase : ZB MR1 Signal #2 Phase: ZB MR2
 Signal #1 Info : 30Mx0.32mmx 0.5µm Signal #2 Info : 30M x 0.32mm x 0.25µm

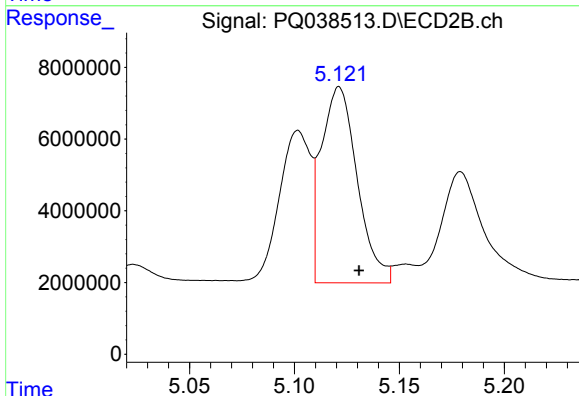




#3 AR-1016-1

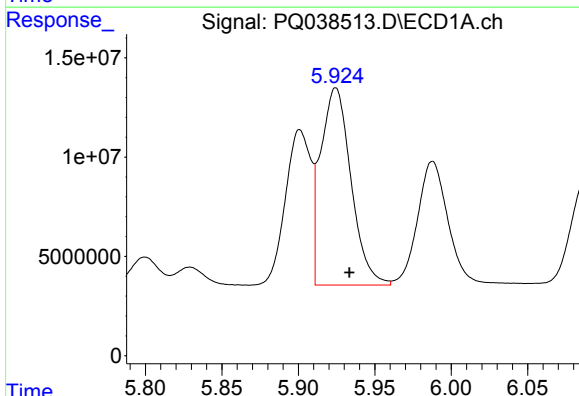
R.T.: 5.901 min
 Delta R.T.: -0.009 min
 Response: 91191240
 Conc: 381.88 ng/ml

Instrument :
 ECD_Q
 ClientSampleId :
 AR1660395



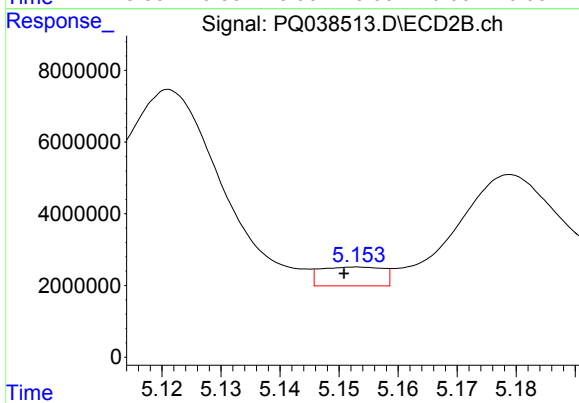
#3 AR-1016-1

R.T.: 5.121 min
 Delta R.T.: -0.009 min
 Response: 65431771
 Conc: 612.43 ng/ml



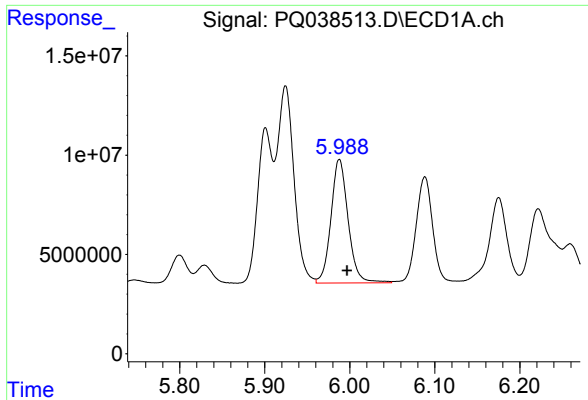
#4 AR-1016-2

R.T.: 5.924 min
 Delta R.T.: -0.009 min
 Response: 137012363
 Conc: 377.42 ng/ml



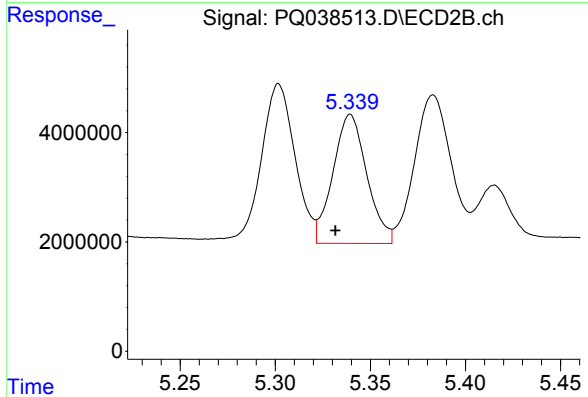
#4 AR-1016-2

R.T.: 5.153 min
 Delta R.T.: 0.002 min
 Response: 3870346
 Conc: 24.98 ng/ml

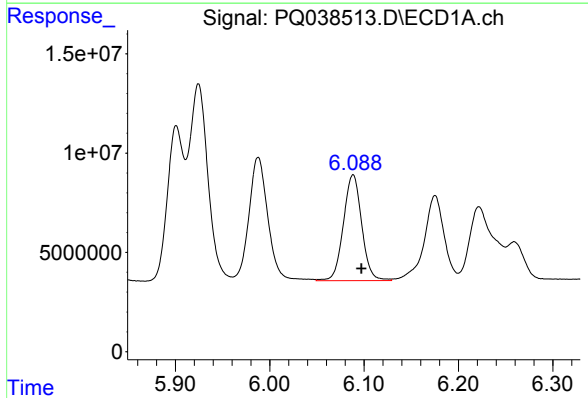


#5 AR-1016-3
 R.T.: 5.988 min
 Delta R.T.: -0.009 min
 Response: 87398401
 Conc: 392.64 ng/ml

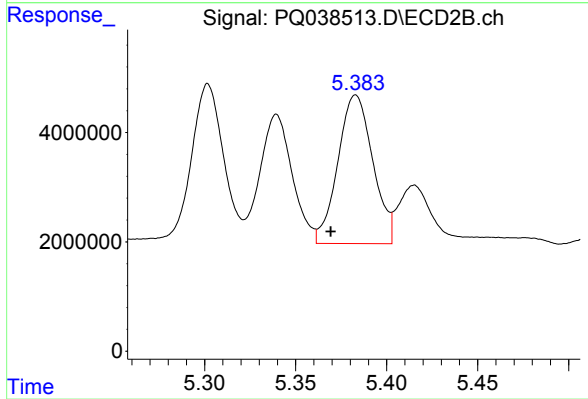
Instrument :
 ECD_Q
 ClientSampled :
 AR1660395



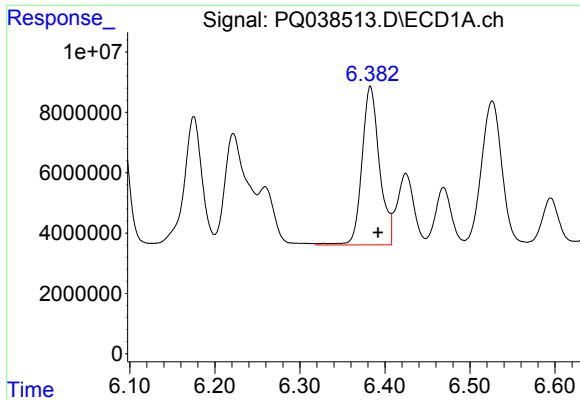
#5 AR-1016-3
 R.T.: 5.339 min
 Delta R.T.: 0.008 min
 Response: 29291257
 Conc: 365.30 ng/ml



#6 AR-1016-4
 R.T.: 6.088 min
 Delta R.T.: -0.009 min
 Response: 71967359
 Conc: 390.38 ng/ml



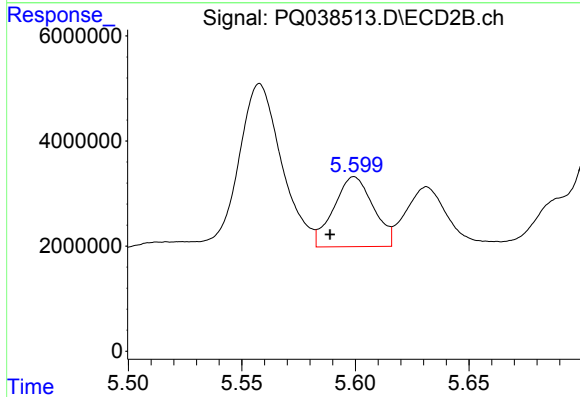
#6 AR-1016-4
 R.T.: 5.383 min
 Delta R.T.: 0.014 min
 Response: 36345423
 Conc: 572.41 ng/ml



#7 AR-1016-5

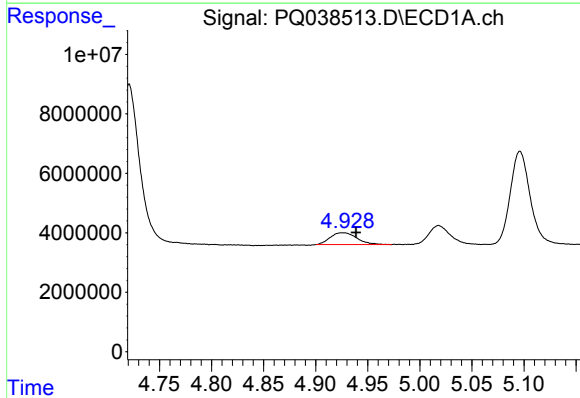
R.T.: 6.383 min
 Delta R.T.: -0.009 min
 Response: 75155293
 Conc: 407.16 ng/ml

Instrument :
 ECD_Q
 ClientSampled :
 AR1660395



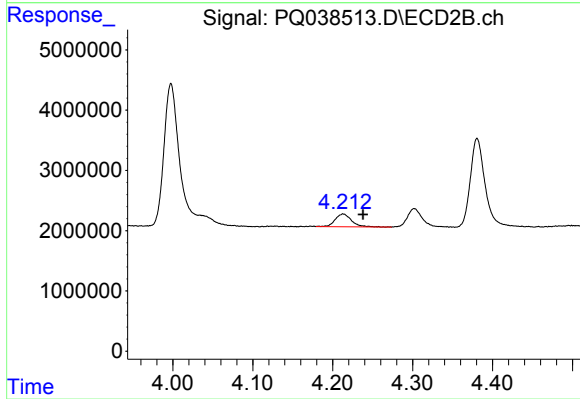
#7 AR-1016-5

R.T.: 5.599 min
 Delta R.T.: 0.011 min
 Response: 16169315
 Conc: 184.61 ng/ml



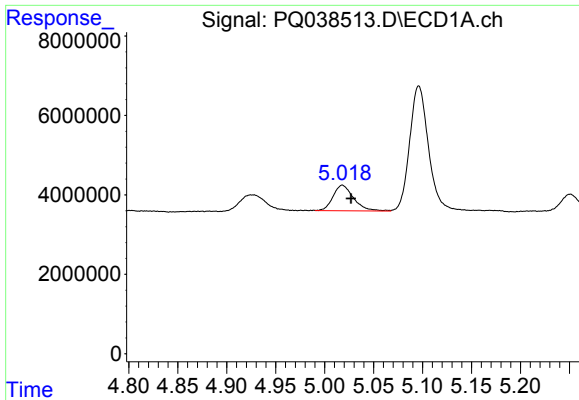
#8 AR-1221-1

R.T.: 4.926 min
 Delta R.T.: -0.012 min
 Response: 7095257
 Conc: 132.37 ng/ml



#8 AR-1221-1

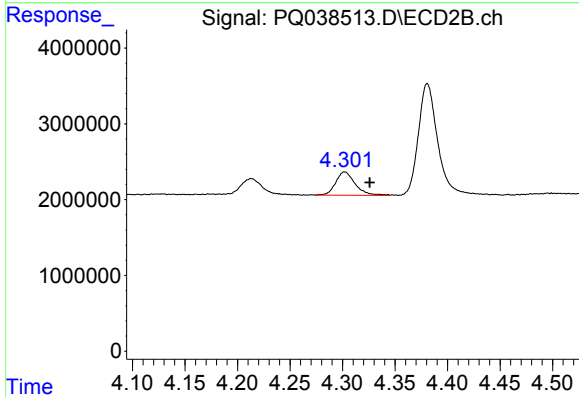
R.T.: 4.213 min
 Delta R.T.: -0.025 min
 Response: 2971509
 Conc: 127.31 ng/ml



#9 AR-1221-2

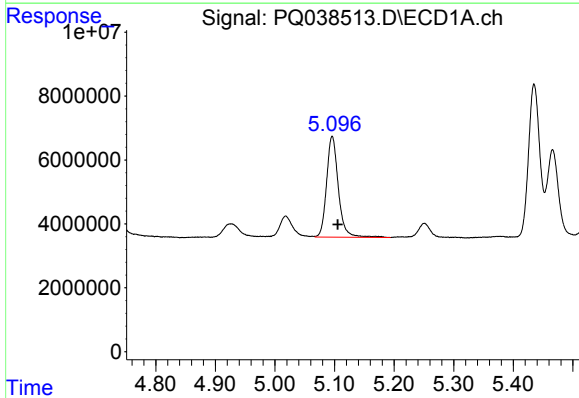
R.T.: 5.018 min
 Delta R.T.: -0.009 min
 Response: 9491207
 Conc: 248.72 ng/ml

Instrument :
 ECD_Q
 ClientSampleId :
 AR1660395



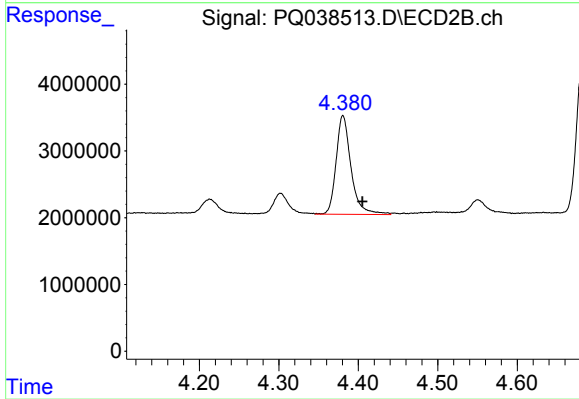
#9 AR-1221-2

R.T.: 4.302 min
 Delta R.T.: -0.024 min
 Response: 4004373
 Conc: 240.54 ng/ml



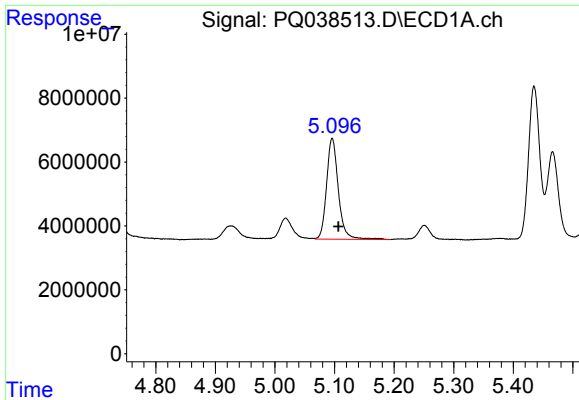
#10 AR-1221-3

R.T.: 5.096 min
 Delta R.T.: -0.009 min
 Response: 43348604
 Conc: 332.44 ng/ml



#10 AR-1221-3

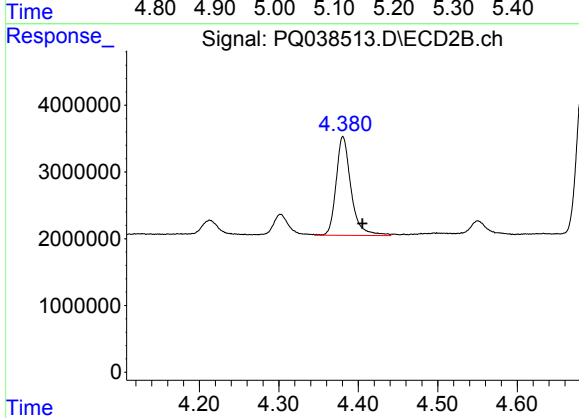
R.T.: 4.381 min
 Delta R.T.: -0.025 min
 Response: 19279483
 Conc: 338.91 ng/ml



#11 AR-1232-1

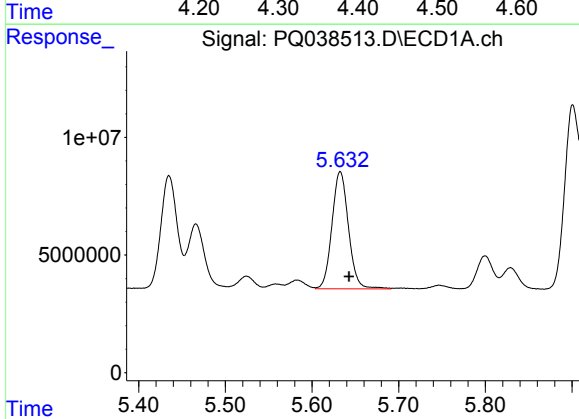
R.T.: 5.096 min
 Delta R.T.: -0.010 min
 Response: 43348604
 Conc: 450.93 ng/ml

Instrument :
 ECD_Q
 ClientSampled :
 AR1660395



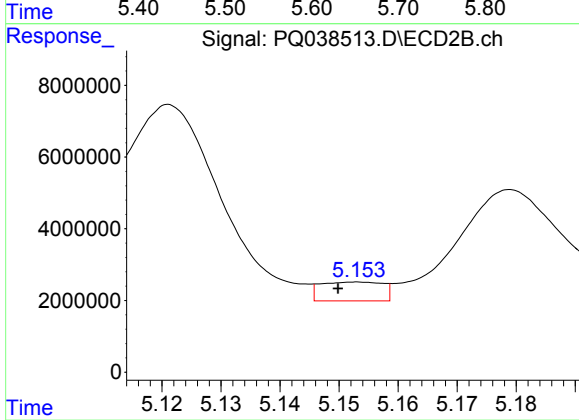
#11 AR-1232-1

R.T.: 4.381 min
 Delta R.T.: -0.024 min
 Response: 19279483
 Conc: 471.56 ng/ml



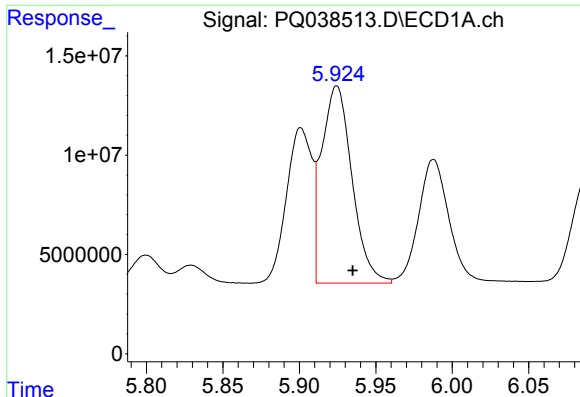
#12 AR-1232-2

R.T.: 5.633 min
 Delta R.T.: -0.010 min
 Response: 65879153
 Conc: 1271.79 ng/ml



#12 AR-1232-2

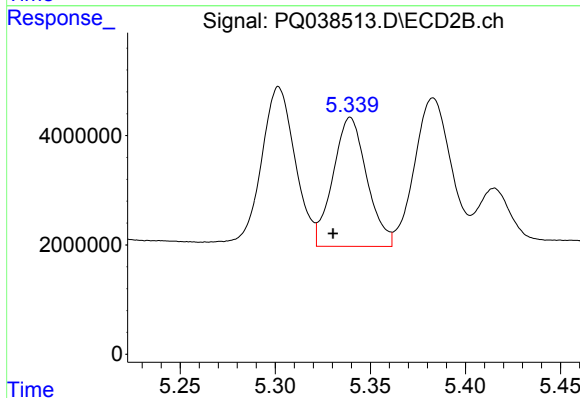
R.T.: 5.153 min
 Delta R.T.: 0.003 min
 Response: 3870346
 Conc: 86.72 ng/ml



#13 AR-1232-3

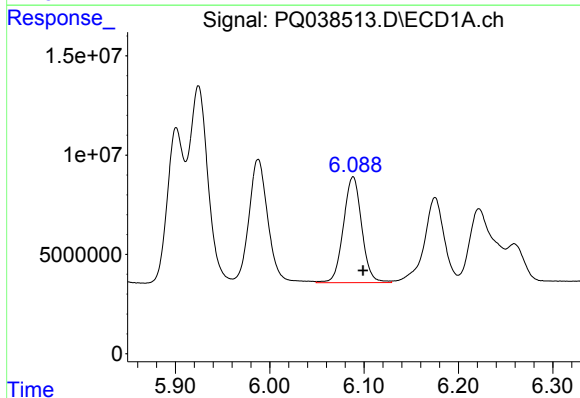
R.T.: 5.924 min
Delta R.T.: -0.010 min
Response: 137012363
Conc: 1290.97 ng/ml

Instrument :
ECD_Q
ClientSampled :
AR1660395



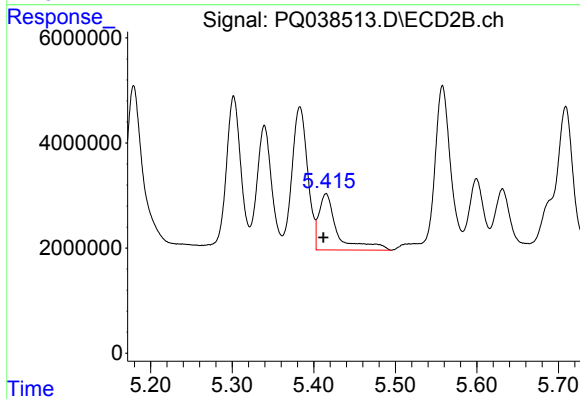
#13 AR-1232-3

R.T.: 5.339 min
Delta R.T.: 0.009 min
Response: 29291257
Conc: 1217.38 ng/ml



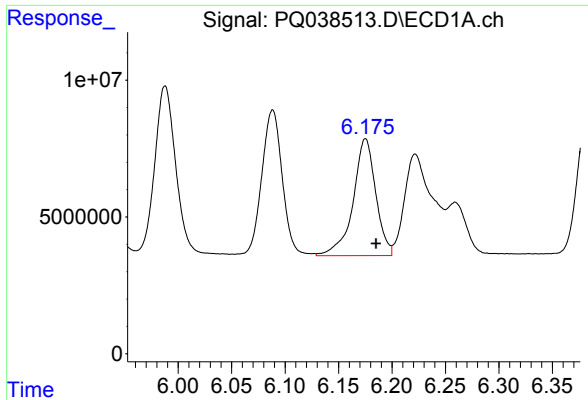
#14 AR-1232-4

R.T.: 6.088 min
Delta R.T.: -0.011 min
Response: 71967359
Conc: 1358.11 ng/ml



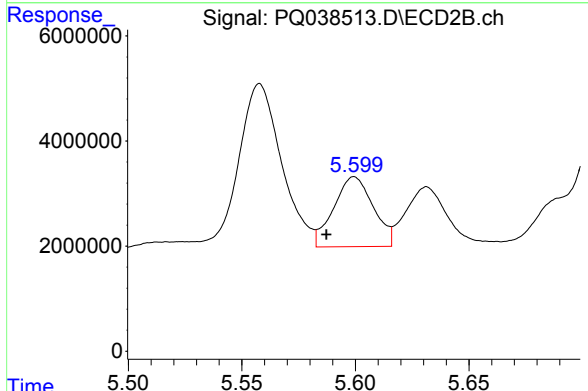
#14 AR-1232-4

R.T.: 5.415 min
Delta R.T.: 0.003 min
Response: 16865221
Conc: 746.72 ng/ml

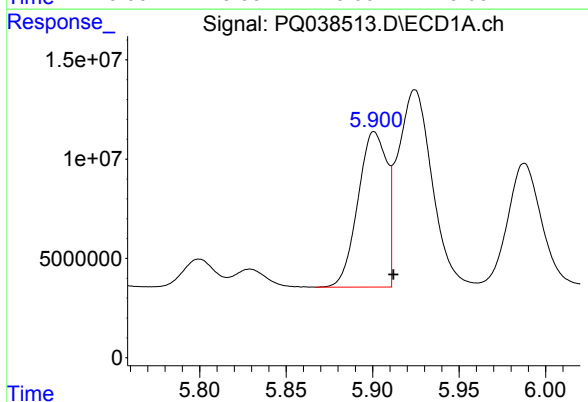


#15 AR-1232-5
 R.T.: 6.175 min
 Delta R.T.: -0.010 min
 Response: 63045624
 Conc: 1549.63 ng/ml

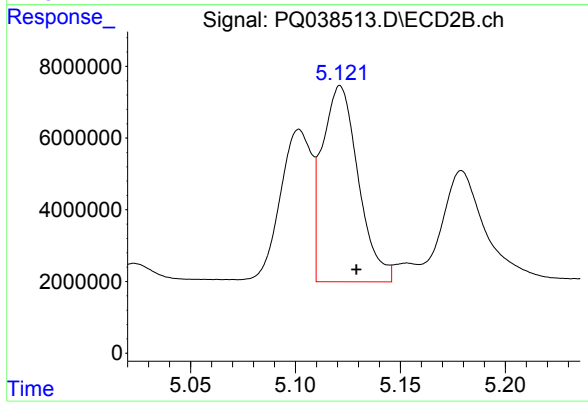
Instrument :
 ECD_Q
ClientSampled :
 AR1660395



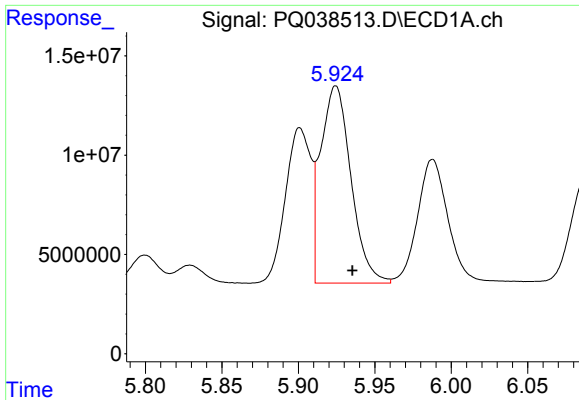
#15 AR-1232-5
 R.T.: 5.599 min
 Delta R.T.: 0.012 min
 Response: 16169315
 Conc: 668.03 ng/ml



#16 AR-1242-1
 R.T.: 5.901 min
 Delta R.T.: -0.011 min
 Response: 91191240
 Conc: 595.79 ng/ml



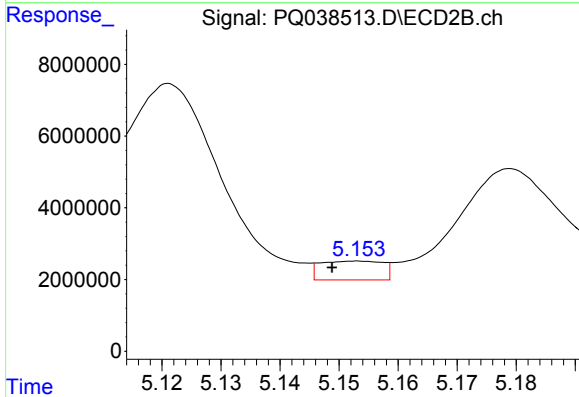
#16 AR-1242-1
 R.T.: 5.121 min
 Delta R.T.: -0.008 min
 Response: 65431771
 Conc: 929.23 ng/ml



#17 AR-1242-2

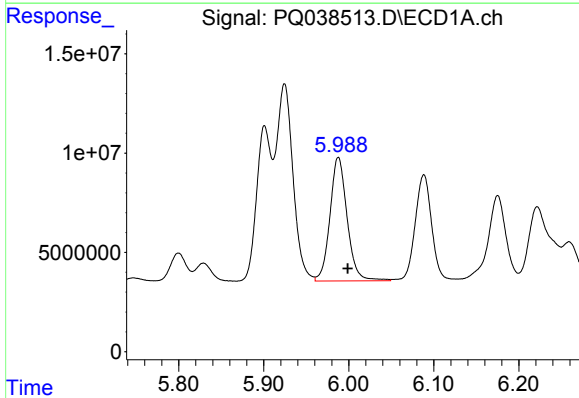
R.T.: 5.924 min
 Delta R.T.: -0.011 min
 Response: 137012363
 Conc: 599.69 ng/ml

Instrument :
 ECD_Q
 ClientSampleId :
 AR1660395



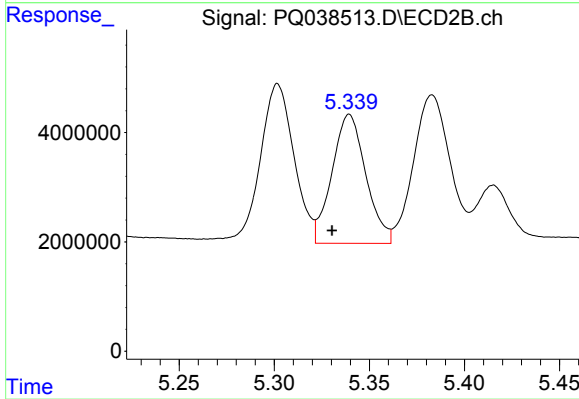
#17 AR-1242-2

R.T.: 5.153 min
 Delta R.T.: 0.004 min
 Response: 3870346
 Conc: 38.41 ng/ml



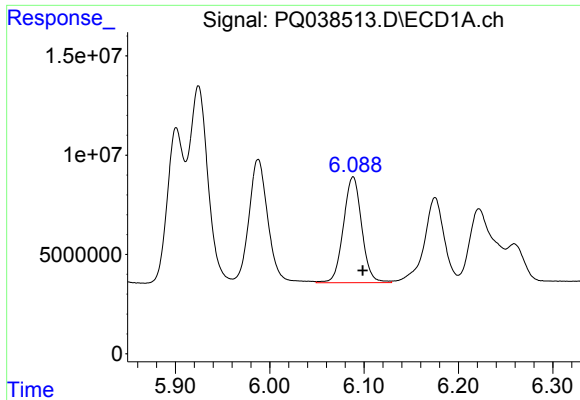
#18 AR-1242-3

R.T.: 5.988 min
 Delta R.T.: -0.011 min
 Response: 87398401
 Conc: 608.90 ng/ml



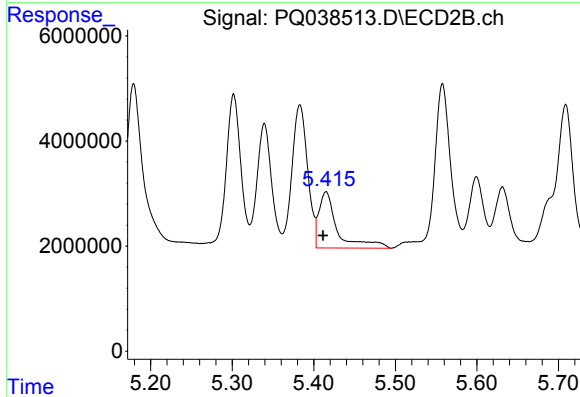
#18 AR-1242-3

R.T.: 5.339 min
 Delta R.T.: 0.009 min
 Response: 29291257
 Conc: 547.15 ng/ml

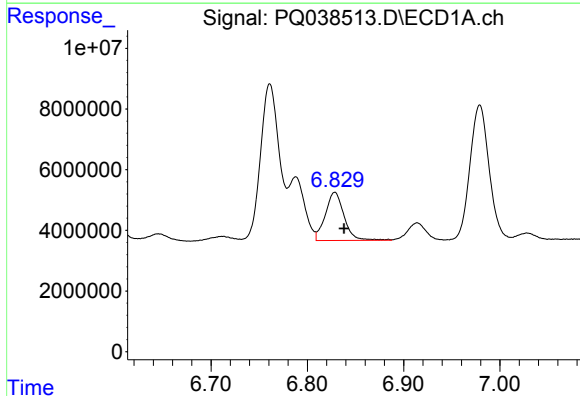


#19 AR-1242-4
 R.T.: 6.088 min
 Delta R.T.: -0.010 min
 Response: 71967359
 Conc: 623.95 ng/ml

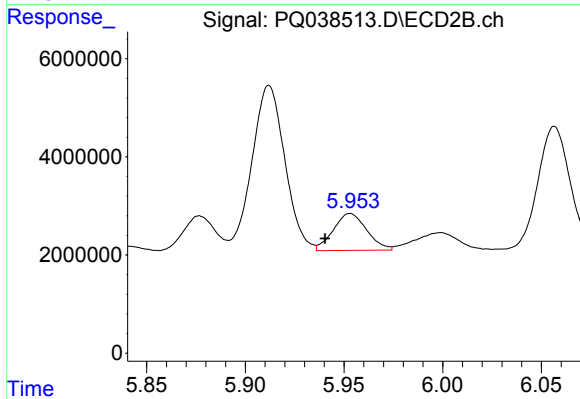
Instrument :
 ECD_Q
 ClientSampleId :
 AR1660395



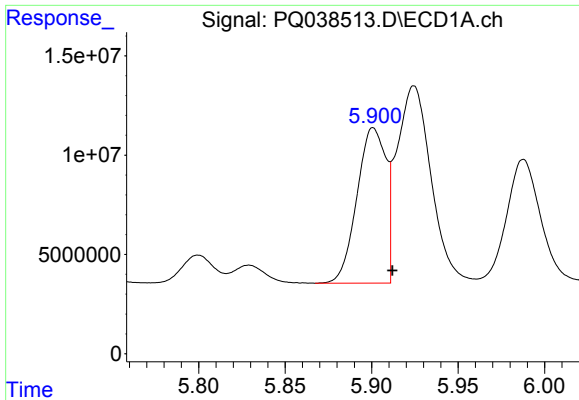
#19 AR-1242-4
 R.T.: 5.415 min
 Delta R.T.: 0.004 min
 Response: 16865221
 Conc: 310.71 ng/ml



#20 AR-1242-5
 R.T.: 6.829 min
 Delta R.T.: -0.009 min
 Response: 21621251
 Conc: 162.77 ng/ml

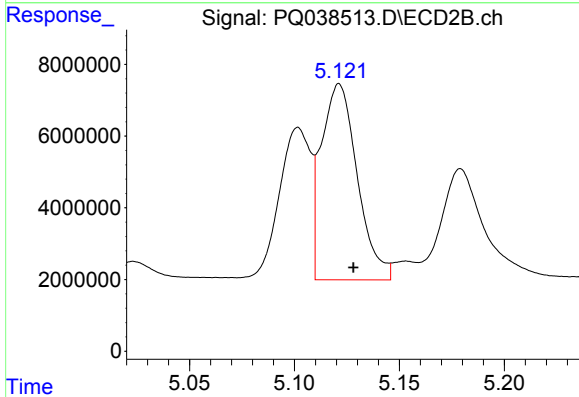


#20 AR-1242-5
 R.T.: 5.953 min
 Delta R.T.: 0.013 min
 Response: 8879916
 Conc: 120.80 ng/ml

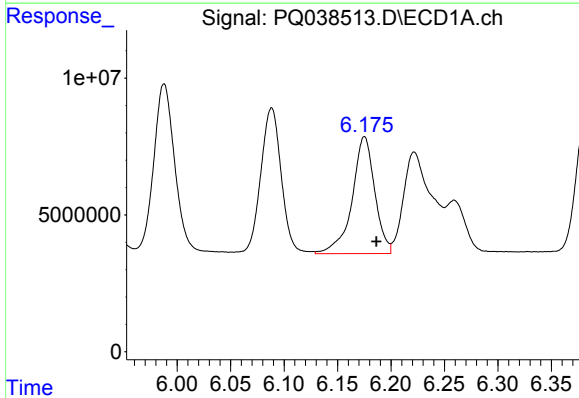


#21 AR-1248-1
 R.T.: 5.901 min
 Delta R.T.: -0.011 min
 Response: 91191240
 Conc: 847.58 ng/ml

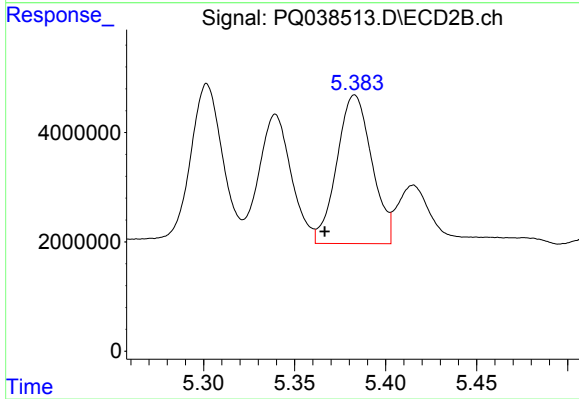
Instrument :
 ECD_Q
ClientSampled :
 AR1660395



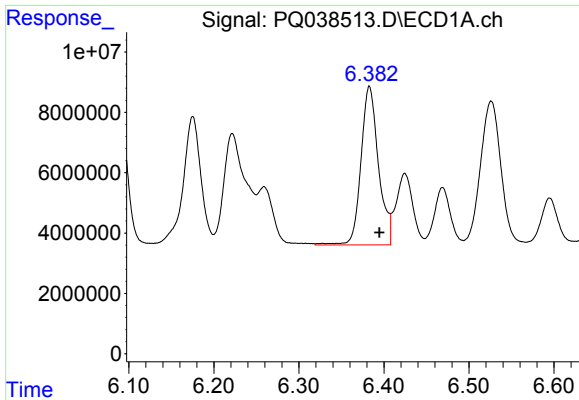
#21 AR-1248-1
 R.T.: 5.121 min
 Delta R.T.: -0.007 min
 Response: 65431771
 Conc: 1303.92 ng/ml



#22 AR-1248-2
 R.T.: 6.175 min
 Delta R.T.: -0.011 min
 Response: 63045624
 Conc: 386.74 ng/ml



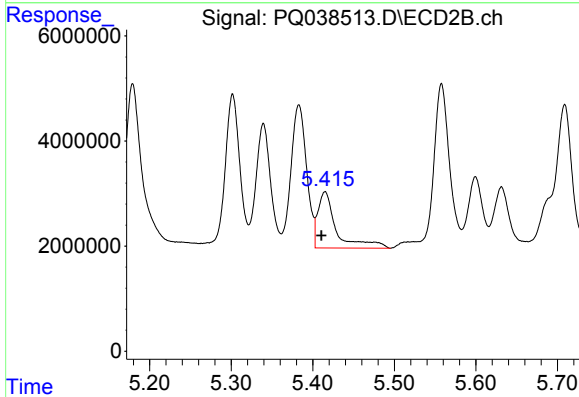
#22 AR-1248-2
 R.T.: 5.383 min
 Delta R.T.: 0.016 min
 Response: 36345423
 Conc: 510.05 ng/ml



#23 AR-1248-3

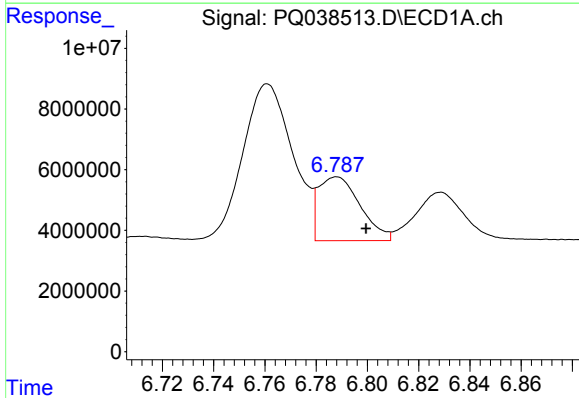
R.T.: 6.383 min
 Delta R.T.: -0.012 min
 Response: 75155293
 Conc: 410.94 ng/ml

Instrument :
 ECD_Q
 ClientSampleId :
 AR1660395



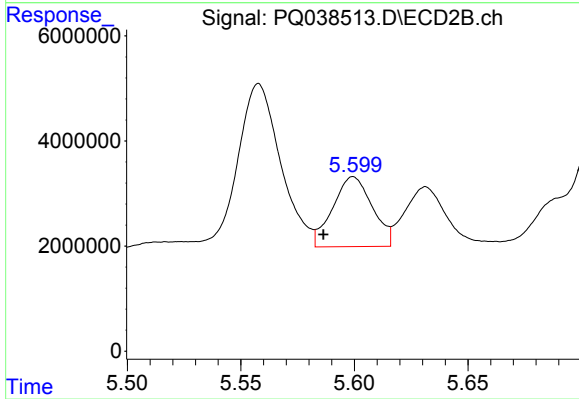
#23 AR-1248-3

R.T.: 5.415 min
 Delta R.T.: 0.005 min
 Response: 16865221
 Conc: 230.23 ng/ml



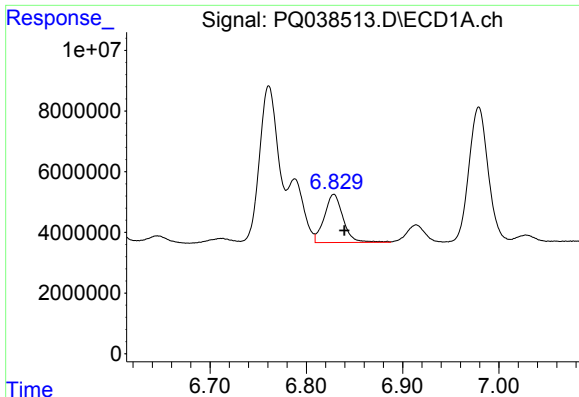
#24 AR-1248-4

R.T.: 6.788 min
 Delta R.T.: -0.011 min
 Response: 23864716
 Conc: 113.83 ng/ml



#24 AR-1248-4

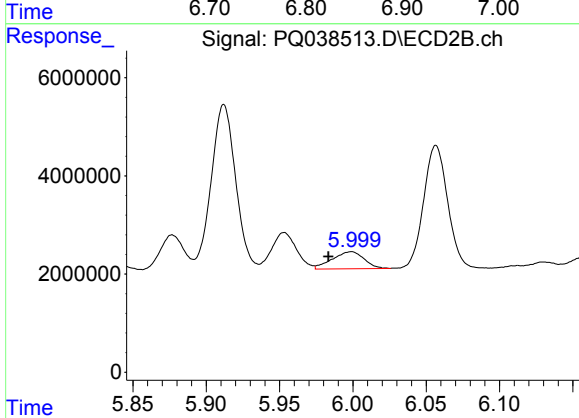
R.T.: 5.599 min
 Delta R.T.: 0.013 min
 Response: 16169315
 Conc: 178.82 ng/ml



#25 AR-1248-5

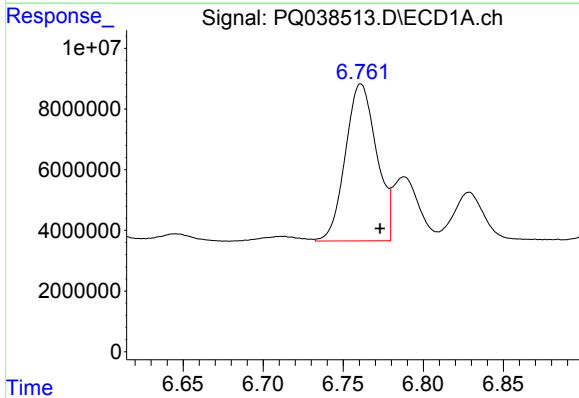
R.T.: 6.829 min
 Delta R.T.: -0.011 min
 Response: 21621251
 Conc: 107.28 ng/ml

Instrument :
 ECD_Q
 ClientSampleId :
 AR1660395



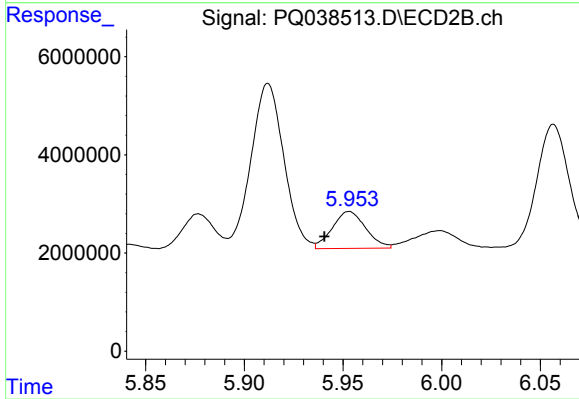
#25 AR-1248-5

R.T.: 5.999 min
 Delta R.T.: 0.016 min
 Response: 5275516
 Conc: 58.80 ng/ml



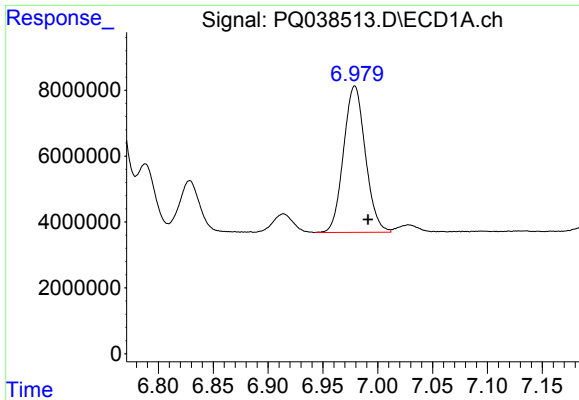
#26 AR-1254-1

R.T.: 6.761 min
 Delta R.T.: -0.012 min
 Response: 70153196
 Conc: 292.14 ng/ml



#26 AR-1254-1

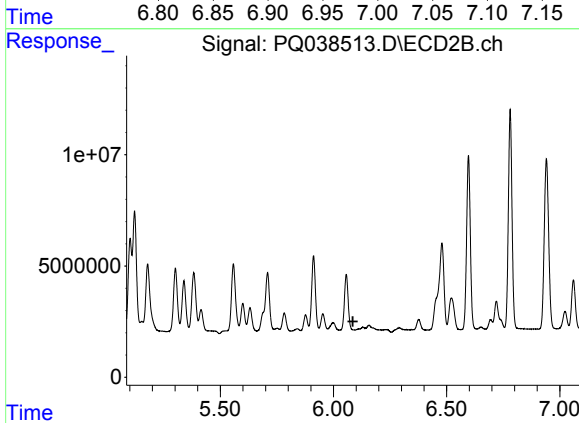
R.T.: 5.953 min
 Delta R.T.: 0.012 min
 Response: 8879916
 Conc: 55.23 ng/ml



#27 AR-1254-2

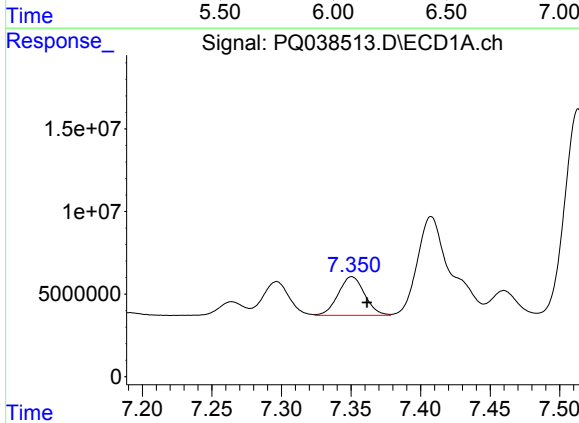
R.T.: 6.979 min
 Delta R.T.: -0.012 min
 Response: 61451557
 Conc: 162.94 ng/ml

Instrument :
 ECD_Q
 ClientSampleId :
 AR1660395



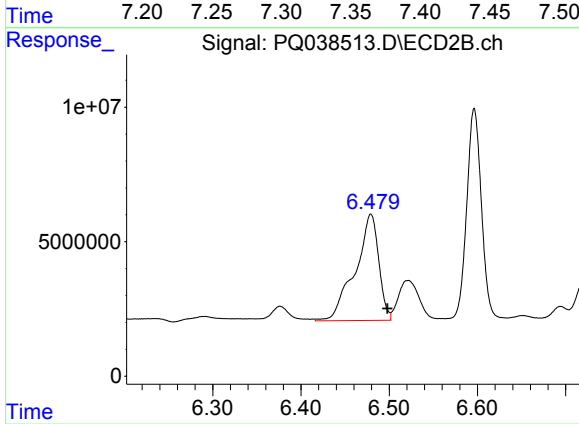
#27 AR-1254-2

R.T.: 6.130 min
 Delta R.T.: 0.044 min
 Response: -9340329
 Conc: N.D.



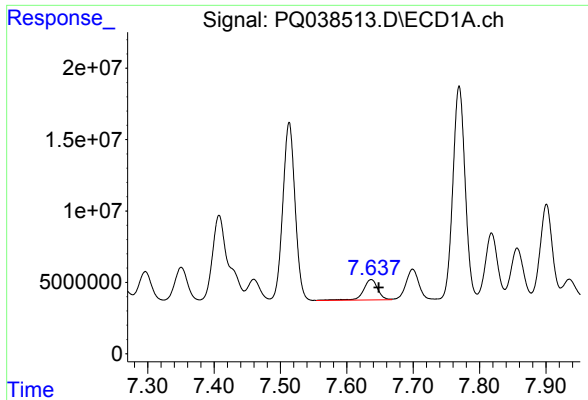
#28 AR-1254-3

R.T.: 7.351 min
 Delta R.T.: -0.011 min
 Response: 30856449
 Conc: 76.00 ng/ml



#28 AR-1254-3

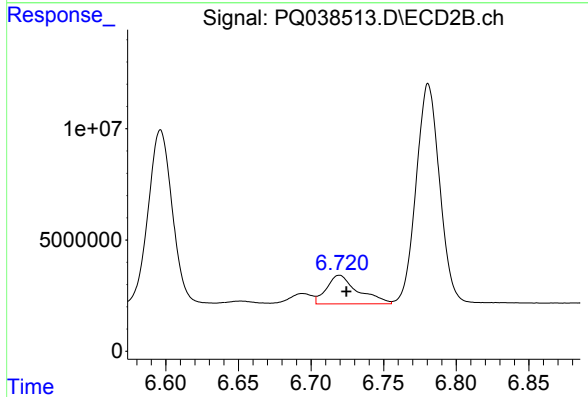
R.T.: 6.479 min
 Delta R.T.: -0.019 min
 Response: 73418268
 Conc: 305.36 ng/ml



#29 AR-1254-4

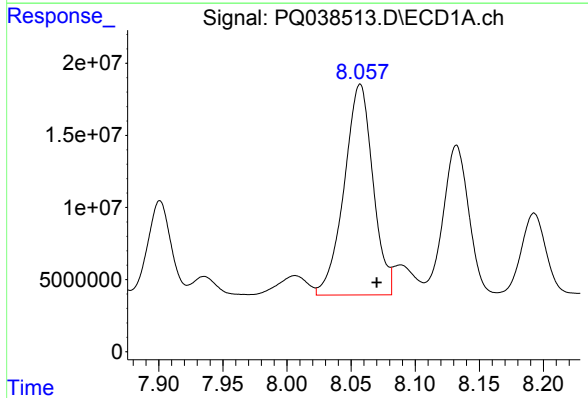
R.T.: 7.637 min
 Delta R.T.: -0.011 min
 Response: 21796287
 Conc: 77.43 ng/ml

Instrument :
 ECD_Q
 ClientSampled :
 AR1660395



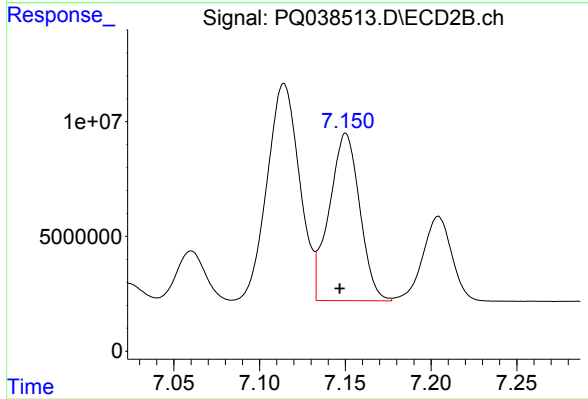
#29 AR-1254-4

R.T.: 6.720 min
 Delta R.T.: -0.005 min
 Response: 19361230
 Conc: 124.94 ng/ml



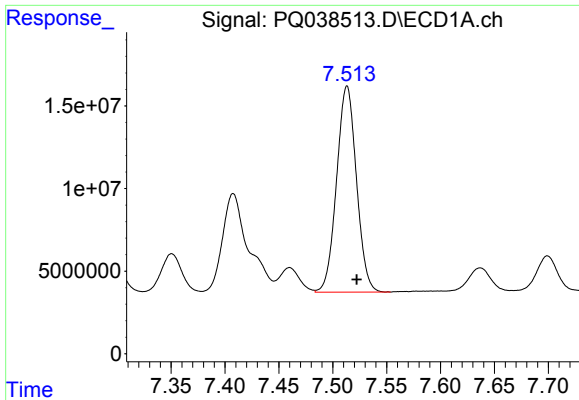
#30 AR-1254-5

R.T.: 8.057 min
 Delta R.T.: -0.013 min
 Response: 228364139
 Conc: 707.48 ng/ml



#30 AR-1254-5

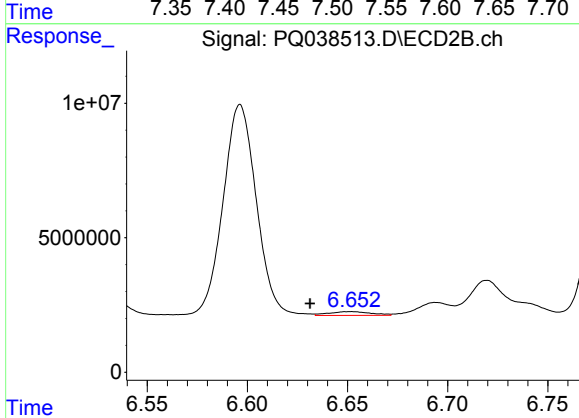
R.T.: 7.150 min
 Delta R.T.: 0.004 min
 Response: 90212317
 Conc: 445.00 ng/ml



#31 AR-1260-1

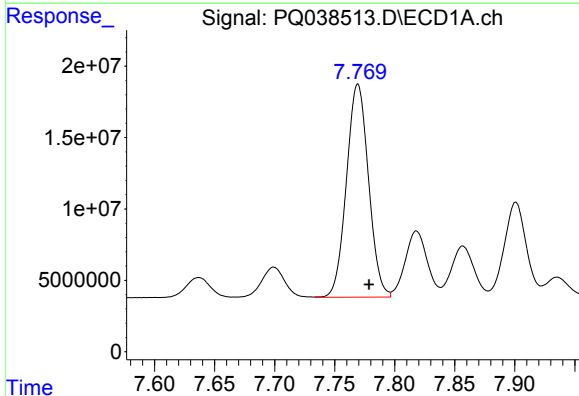
R.T.: 7.513 min
Delta R.T.: -0.009 min
Response: 160023905
Conc: 376.12 ng/ml

Instrument :
ECD_Q
ClientSampled :
AR1660395



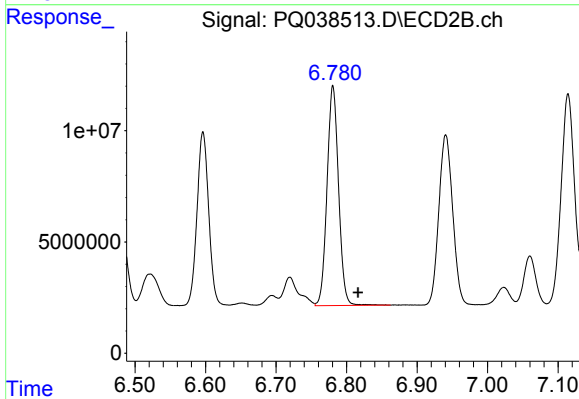
#31 AR-1260-1

R.T.: 6.652 min
Delta R.T.: 0.020 min
Response: 2065052
Conc: 10.10 ng/ml



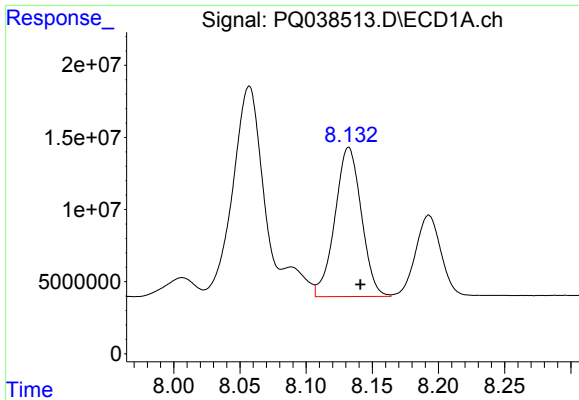
#32 AR-1260-2

R.T.: 7.769 min
Delta R.T.: -0.009 min
Response: 191037000
Conc: 372.14 ng/ml



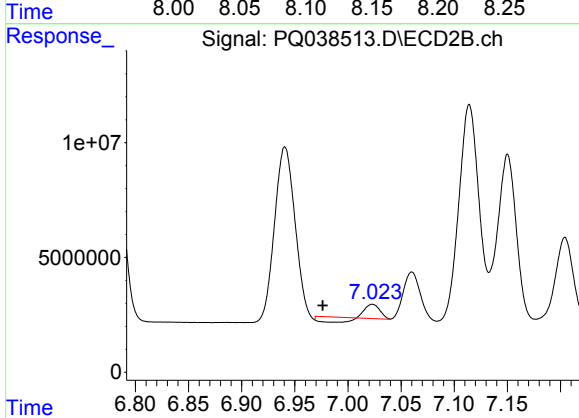
#32 AR-1260-2

R.T.: 6.781 min
Delta R.T.: -0.035 min
Response: 112002977
Conc: 437.24 ng/ml

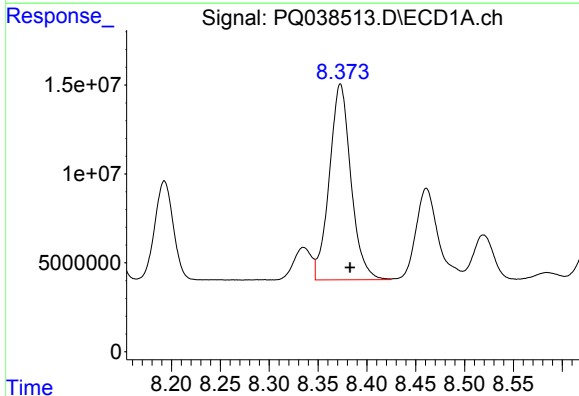


#33 AR-1260-3
 R.T.: 8.132 min
 Delta R.T.: -0.009 min
 Response: 143675979
 Conc: 371.42 ng/ml

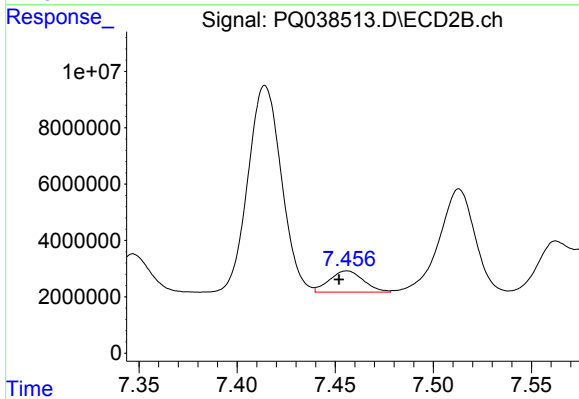
Instrument :
 ECD_Q
ClientSampled :
 AR1660395



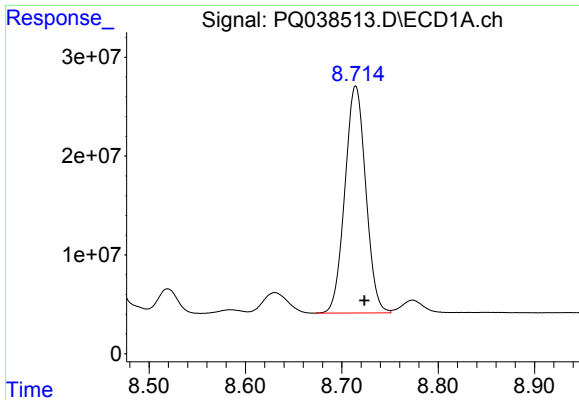
#33 AR-1260-3
 R.T.: 7.023 min
 Delta R.T.: 0.047 min
 Response: 3555834
 Conc: 14.86 ng/ml



#34 AR-1260-4
 R.T.: 8.373 min
 Delta R.T.: -0.010 min
 Response: 169246585
 Conc: 371.04 ng/ml



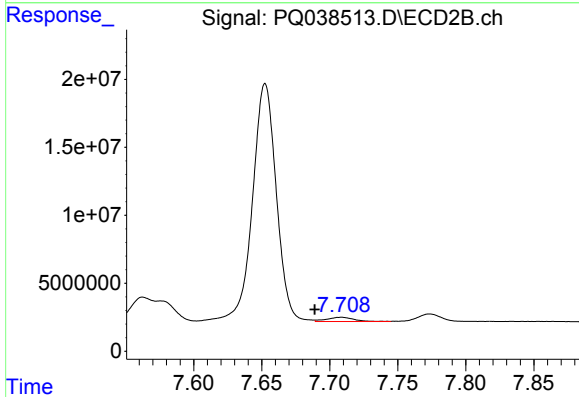
#34 AR-1260-4
 R.T.: 7.456 min
 Delta R.T.: 0.004 min
 Response: 9124108
 Conc: 46.10 ng/ml



#35 AR-1260-5

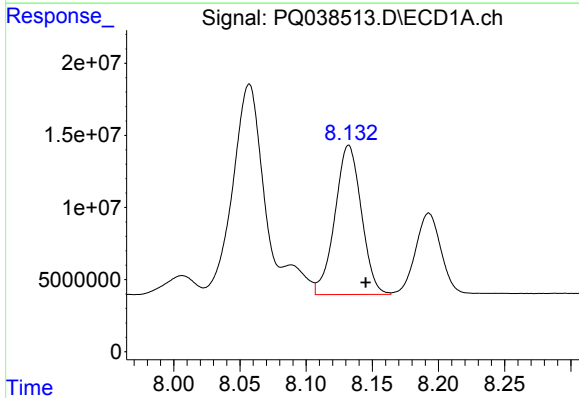
R.T.: 8.714 min
 Delta R.T.: -0.009 min
 Response: 344771007
 Conc: 364.08 ng/ml

Instrument :
 ECD_Q
 ClientSampleId :
 AR1660395



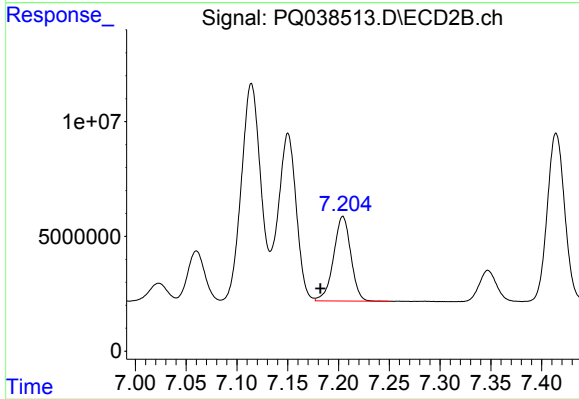
#35 AR-1260-5

R.T.: 7.708 min
 Delta R.T.: 0.020 min
 Response: 4413844
 Conc: 8.98 ng/ml



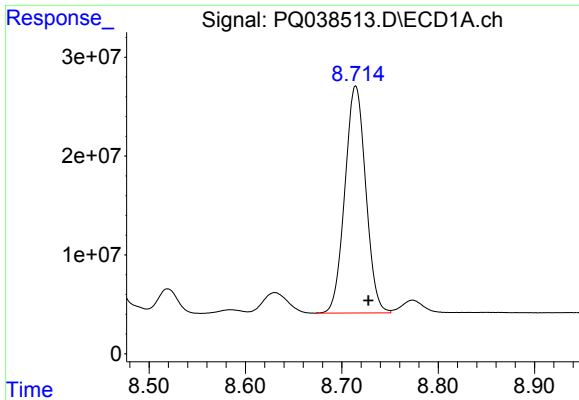
#36 AR-1262-1

R.T.: 8.132 min
 Delta R.T.: -0.013 min
 Response: 143675979
 Conc: 362.46 ng/ml



#36 AR-1262-1

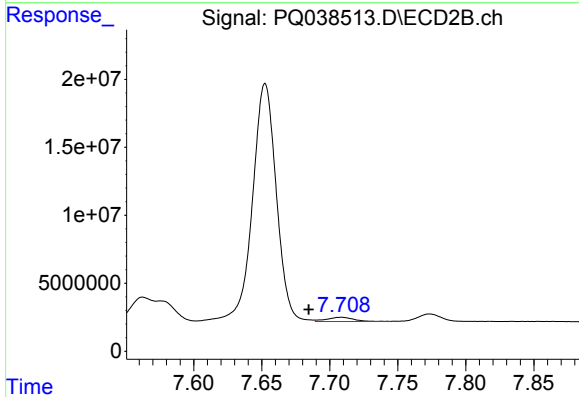
R.T.: 7.204 min
 Delta R.T.: 0.022 min
 Response: 43552601
 Conc: 202.26 ng/ml



#37 AR-1262-2

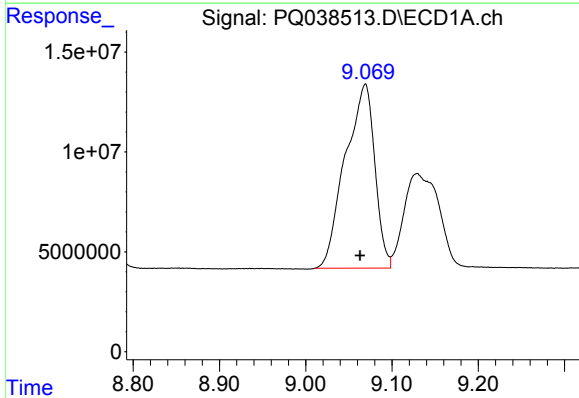
R.T.: 8.714 min
 Delta R.T.: -0.013 min
 Response: 344771007
 Conc: 483.35 ng/ml

Instrument :
 ECD_Q
 ClientSampled :
 AR1660395



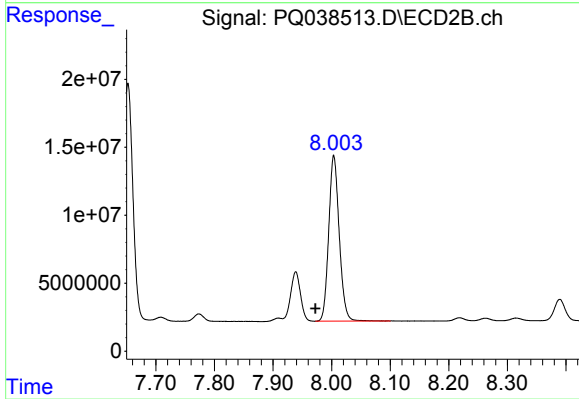
#37 AR-1262-2

R.T.: 7.708 min
 Delta R.T.: 0.024 min
 Response: 4413844
 Conc: 11.33 ng/ml



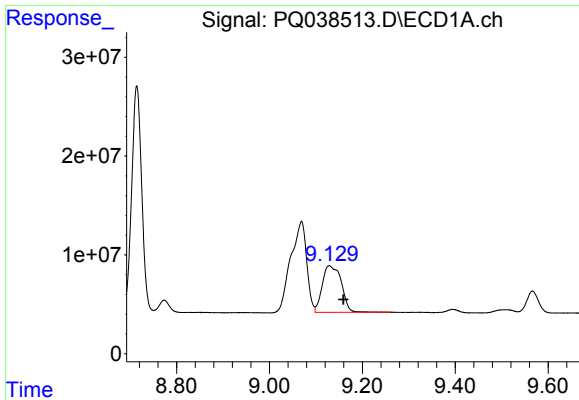
#38 AR-1262-3

R.T.: 9.069 min
 Delta R.T.: 0.006 min
 Response: 218668876
 Conc: 456.84 ng/ml



#38 AR-1262-3

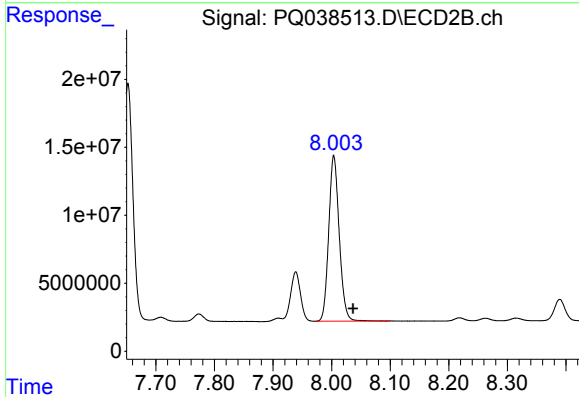
R.T.: 8.004 min
 Delta R.T.: 0.031 min
 Response: 151685705
 Conc: 1018.82 ng/ml



#39 AR-1262-4

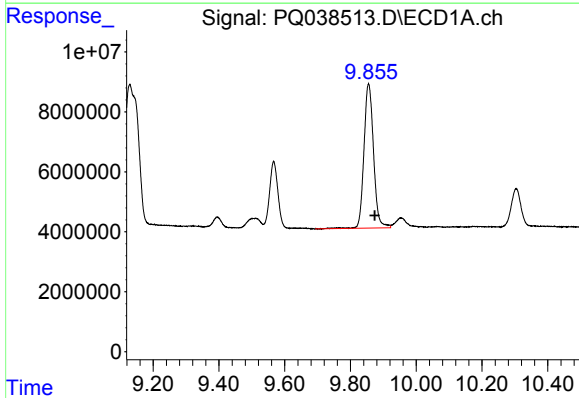
R.T.: 9.129 min
Delta R.T.: -0.030 min
Response: 134108768
Conc: 354.36 ng/ml

Instrument :
ECD_Q
ClientSampleId :
AR1660395



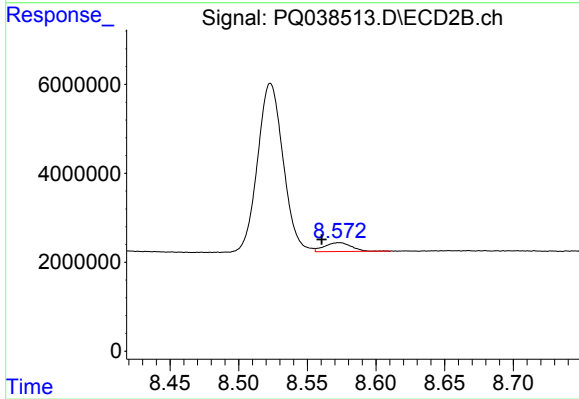
#39 AR-1262-4

R.T.: 8.004 min
Delta R.T.: -0.033 min
Response: 151685705
Conc: 532.16 ng/ml



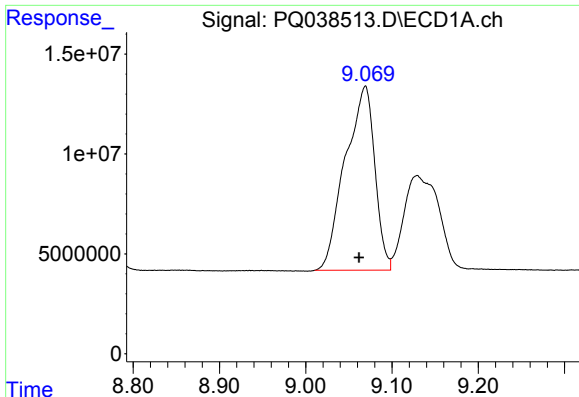
#40 AR-1262-5

R.T.: 9.855 min
Delta R.T.: -0.019 min
Response: 97147823
Conc: 395.29 ng/ml



#40 AR-1262-5

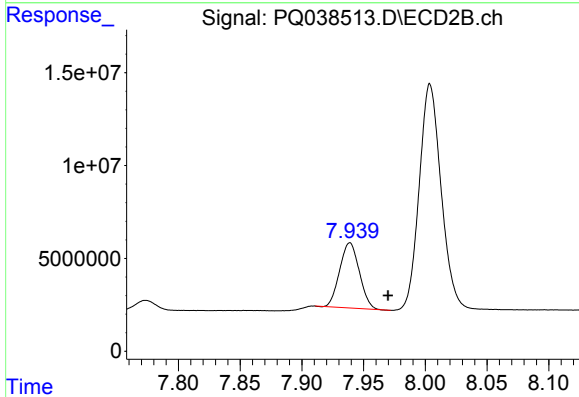
R.T.: 8.573 min
Delta R.T.: 0.013 min
Response: 2718660
Conc: 23.00 ng/ml



#41 AR-1268-1

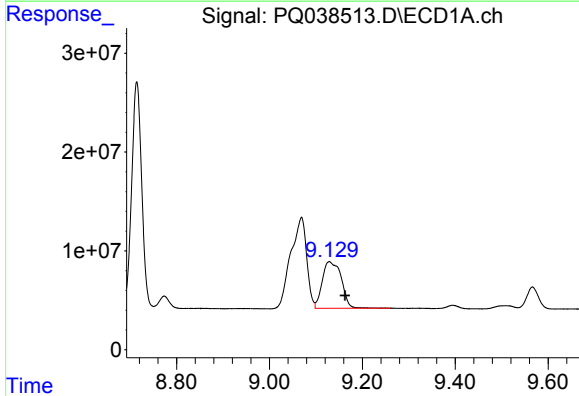
R.T.: 9.069 min
 Delta R.T.: 0.007 min
 Response: 218668876
 Conc: 137.91 ng/ml

Instrument :
 ECD_Q
 ClientSampleId :
 AR1660395



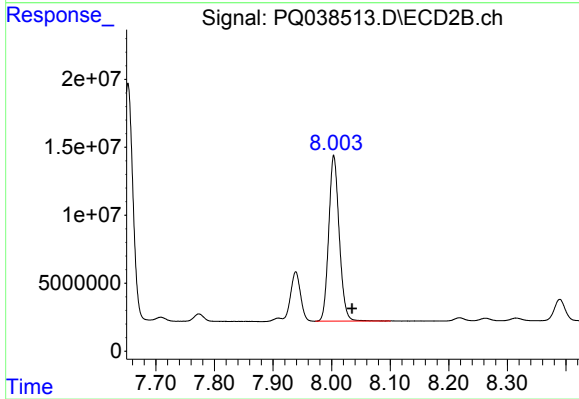
#41 AR-1268-1

R.T.: 7.939 min
 Delta R.T.: -0.031 min
 Response: 38958097
 Conc: 48.65 ng/ml



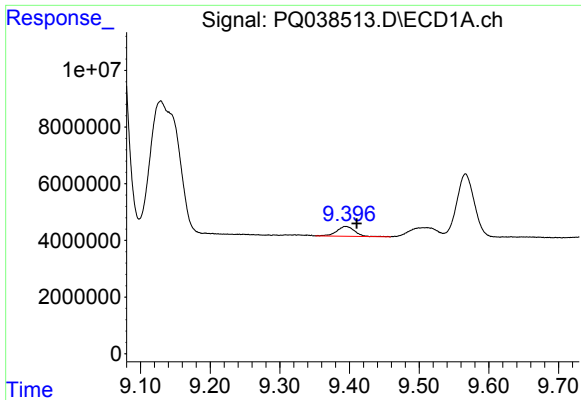
#42 AR-1268-2

R.T.: 9.129 min
 Delta R.T.: -0.034 min
 Response: 134108768
 Conc: 92.28 ng/ml



#42 AR-1268-2

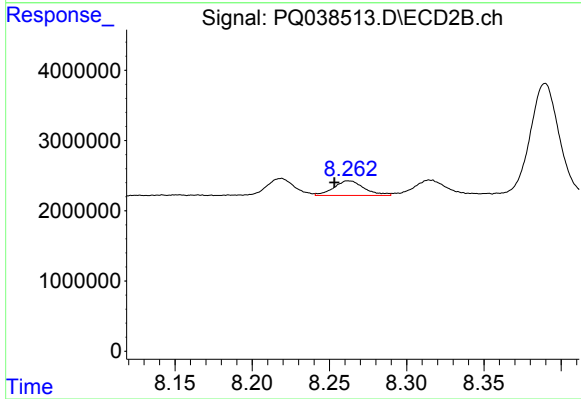
R.T.: 8.004 min
 Delta R.T.: -0.031 min
 Response: 151685705
 Conc: 208.97 ng/ml



#43 AR-1268-3

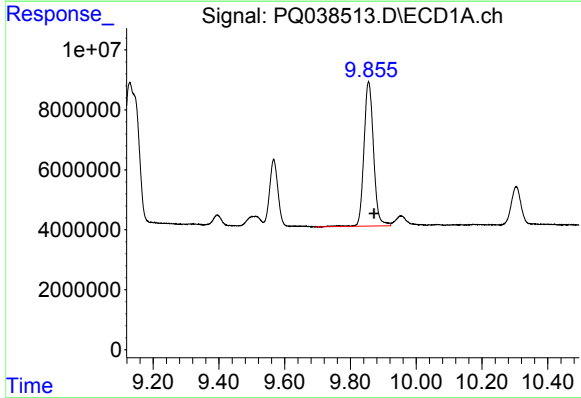
R.T.: 9.395 min
 Delta R.T.: -0.016 min
 Response: 6130987
 Conc: 4.76 ng/ml

Instrument :
 ECD_Q
 ClientSampleId :
 AR1660395



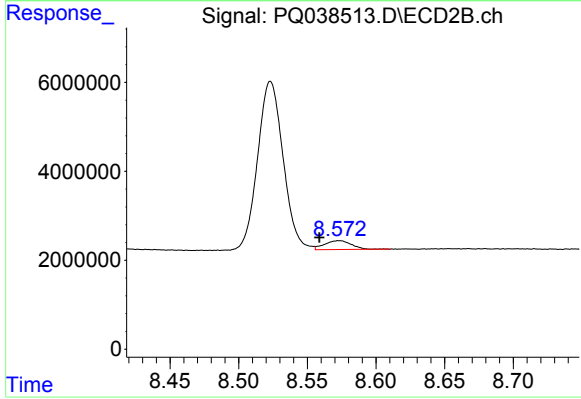
#43 AR-1268-3

R.T.: 8.263 min
 Delta R.T.: 0.009 min
 Response: 2845327
 Conc: 4.52 ng/ml



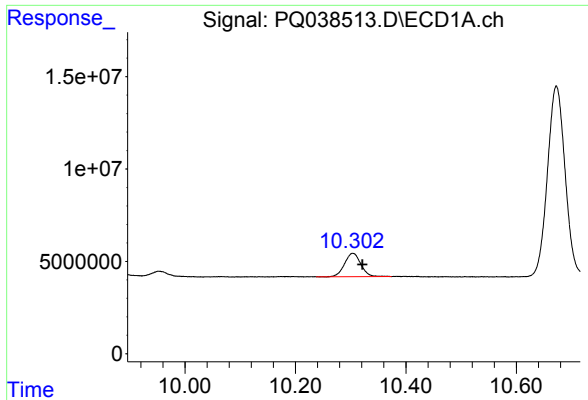
#44 AR-1268-4

R.T.: 9.855 min
 Delta R.T.: -0.016 min
 Response: 97147823
 Conc: 203.39 ng/ml



#44 AR-1268-4

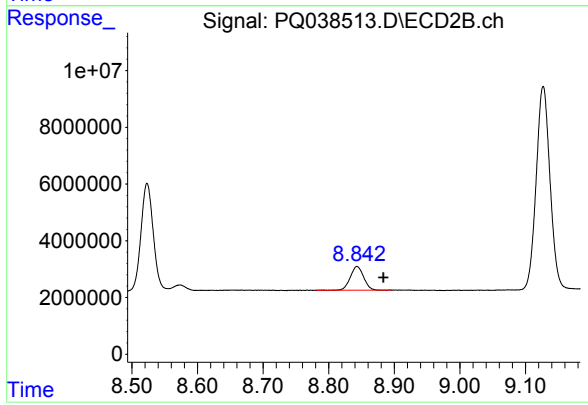
R.T.: 8.573 min
 Delta R.T.: 0.014 min
 Response: 2718660
 Conc: 11.55 ng/ml



#45 AR-1268-5

R.T.: 10.304 min
Delta R.T.: -0.017 min
Response: 25922635
Conc: 6.02 ng/ml

Instrument :
ECD_Q
ClientSampled :
AR1660395



#45 AR-1268-5

R.T.: 8.843 min
Delta R.T.: -0.040 min
Response: 11842856
Conc: 6.15 ng/ml