

Data Path : Z:\pestpcbsrv\HPCHEM1\ECD\_Q\Data\PQ040121\  
 Data File : PQ052806.D  
 Signal(s) : Signal #1: ECD1A.ch Signal #2: ECD2B.ch  
 Acq On : 01 Apr 2021 14:08  
 Operator : DD\AJ  
 Sample : PB135456BL  
 Misc :  
 ALS Vial : 15 Sample Multiplier: 1

Instrument :  
 ECD\_Q  
 ClientSampleId :  
 ABLK56

Integration File signal 1: autoint1.e  
 Integration File signal 2: autoint2.e  
 Quant Time: Apr 02 03:00:03 2021  
 Quant Method : Z:\pestpcbsrv\HPCHEM1\ECD\_Q\Method\PQ031721CLP.M  
 Quant Title : GC EXTRACTABLES  
 QLast Update : Thu Mar 18 06:24:02 2021  
 Response via : Initial Calibration  
 Integrator: ChemStation

Volume Inj. : 1 µl  
 Signal #1 Phase : ZB MR1 Signal #2 Phase: ZB MR2  
 Signal #1 Info : 30Mx0.32mmx 0.5µm Signal #2 Info : 30M x 0.32mm x 0.25µm

Compound	RT#1	RT#2	Resp#1	Resp#2	ng/ml	ng/ml
-----						
System Monitoring Compounds						
1) SA Tetrachlo...	5.224	4.240	569.7E6	226.6E6	24.721	23.696
2) SA Decachlor...	11.414	9.583	904.7E6	359.2E6	36.587	36.299
Target Compounds						
9) L2 AR-1221-2	5.581	4.596	6492984	2940554	38.250	39.344
12) L3 AR-1232-2	6.248	0.000	336610	0	1.331	N.D. #
20) L4 AR-1242-5	7.468f	0.000	5571279	0	8.316	N.D. #
24) L5 AR-1248-4	7.468	0.000	5571279	0	5.208	N.D. #
25) L5 AR-1248-5	7.468f	0.000	5571279	0	5.242	N.D. #
26) L6 AR-1254-1	7.468	0.000	5571279	0	4.100	N.D. #
27) L6 AR-1254-2	7.681	0.000	4170601	0	1.954	N.D. #
28) L6 AR-1254-3	8.095	0.000	4594453	0	1.960	N.D. #
29) L6 AR-1254-4	0.000	7.259f	0	5696431	N.D.	6.401 #
30) L6 AR-1254-5	8.795	0.000	5191671	0	2.830	N.D. #
32) L7 AR-1260-2	8.514	7.286	17931970	1783142	13.646	2.236 #
34) L7 AR-1260-4	9.106	0.000	1753167	0	1.534	N.D. #
35) L7 AR-1260-5	9.450	8.169	2478686	567795	1.042	0.371 #
37) L8 AR-1262-2	9.450	8.169	2478686	567795	0.740	0.273 #
38) L8 AR-1262-3	9.816	0.000	2280894	0	1.028	N.D. #
39) L8 AR-1262-4	9.816f	0.000	2280894	0	1.306	N.D. #
41) L9 AR-1268-1	9.816	0.000	2280894	0	0.581	N.D. #
43) L9 AR-1268-3	0.000	8.782f	0	1704274	N.D.	0.958 #
45) L9 AR-1268-5	11.053	9.323	9306518	2201240	0.868	0.456 #
-----						

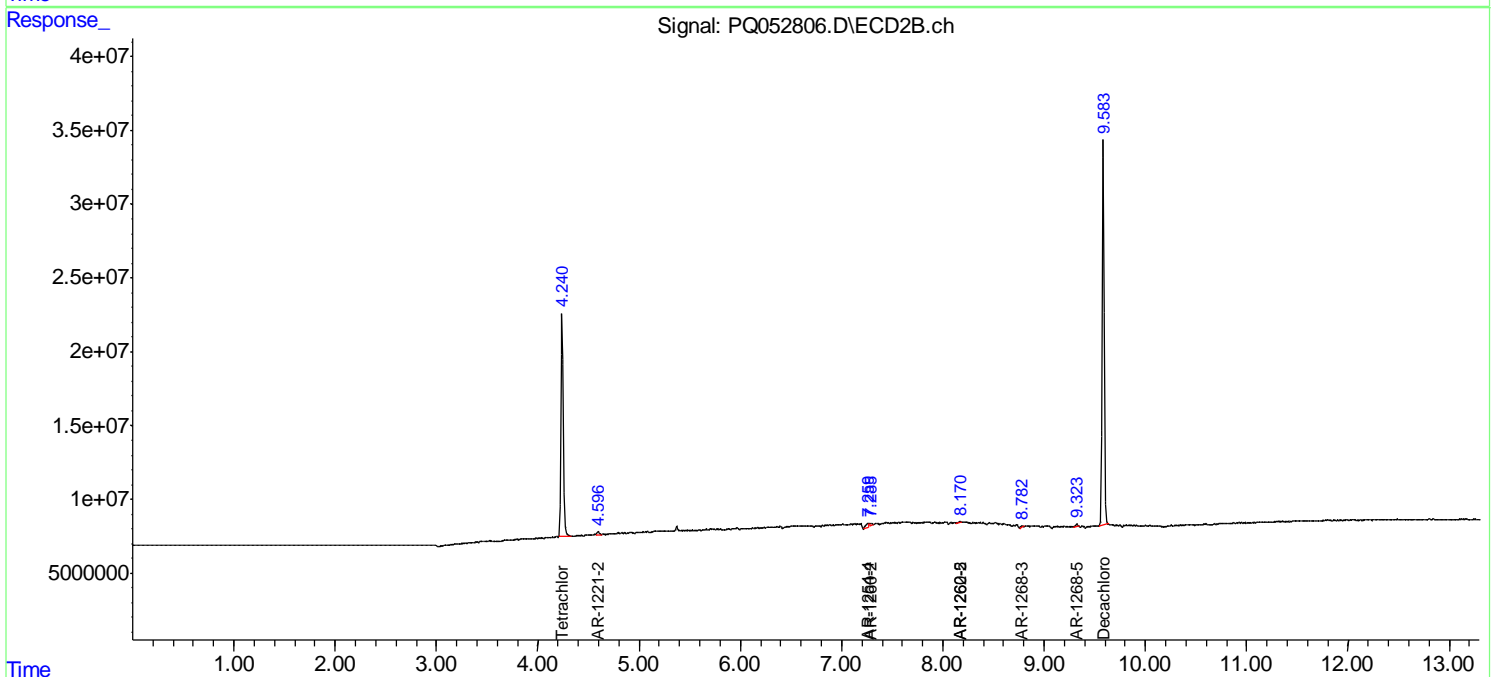
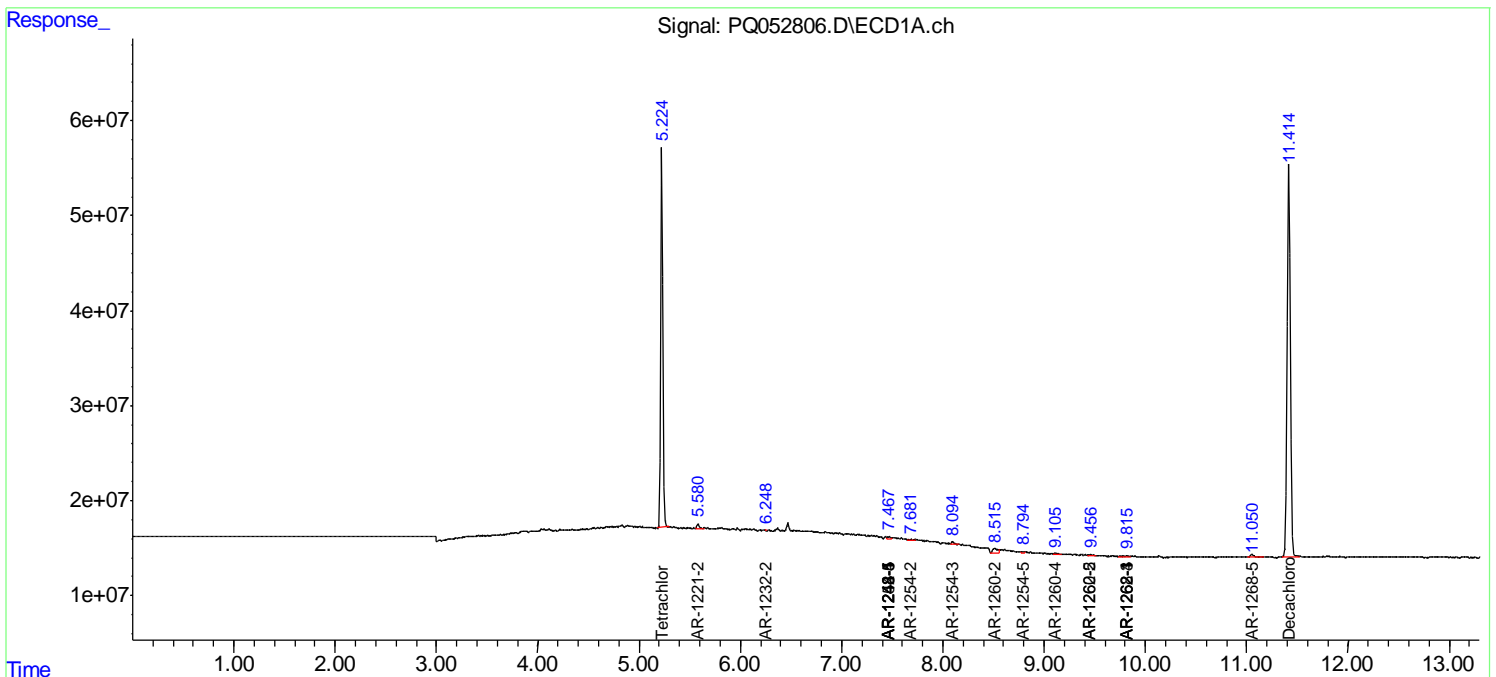
(f)=RT Delta > 1/2 Window (#)=Amounts differ by > 25% (m)=manual int.

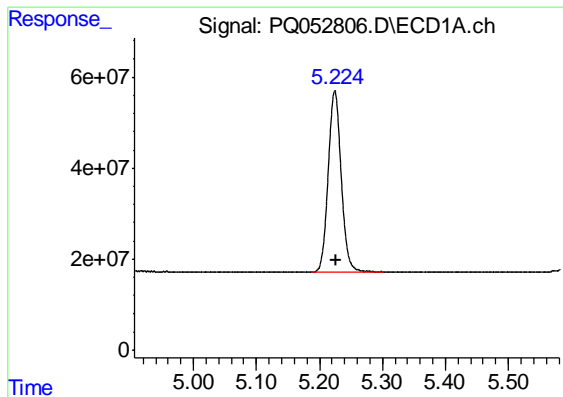
Data Path : Z:\pestpcbsrv\HPCHEM1\ECD\_Q\Data\PQ040121\  
 Data File : PQ052806.D  
 Signal(s) : Signal #1: ECD1A.ch Signal #2: ECD2B.ch  
 Acq On : 01 Apr 2021 14:08  
 Operator : DD\AJ  
 Sample : PB135456BL  
 Misc :  
 ALS Vial : 15 Sample Multiplier: 1

Instrument :  
 ECD\_Q  
 ClientSampled :  
 ABLK56

Integration File signal 1: autoint1.e  
 Integration File signal 2: autoint2.e  
 Quant Time: Apr 02 03:00:03 2021  
 Quant Method : Z:\pestpcbsrv\HPCHEM1\ECD\_Q\Method\PQ031721CLP.M  
 Quant Title : GC EXTRACTABLES  
 QLast Update : Thu Mar 18 06:24:02 2021  
 Response via : Initial Calibration  
 Integrator: ChemStation

Volume Inj. : 1 µl  
 Signal #1 Phase : ZB MR1 Signal #2 Phase: ZB MR2  
 Signal #1 Info : 30Mx0.32mmx 0.5µm Signal #2 Info : 30M x 0.32mm x 0.25µm

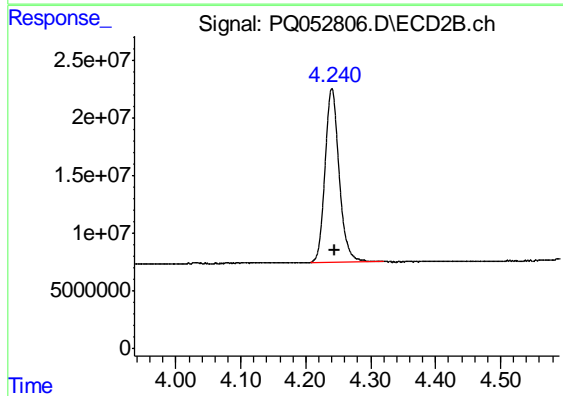




#1 Tetrachloro-m-xylene

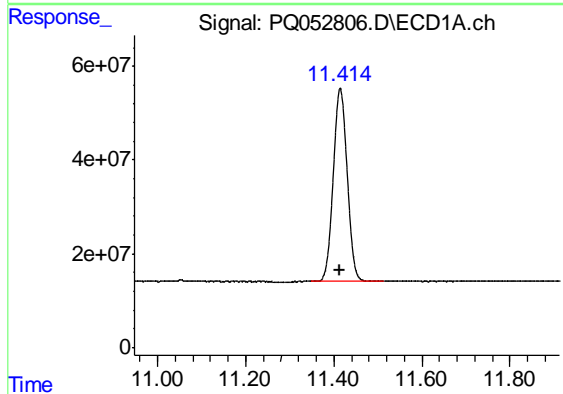
R.T.: 5.224 min  
 Delta R.T.: -0.003 min  
 Response: 569714816  
 Conc: 24.72 ng/ml

Instrument :  
 ECD\_Q  
 ClientSampleId :  
 ABLK56



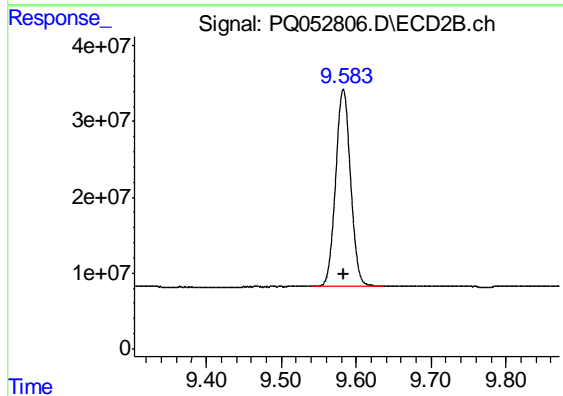
#1 Tetrachloro-m-xylene

R.T.: 4.240 min  
 Delta R.T.: -0.004 min  
 Response: 226647284  
 Conc: 23.70 ng/ml



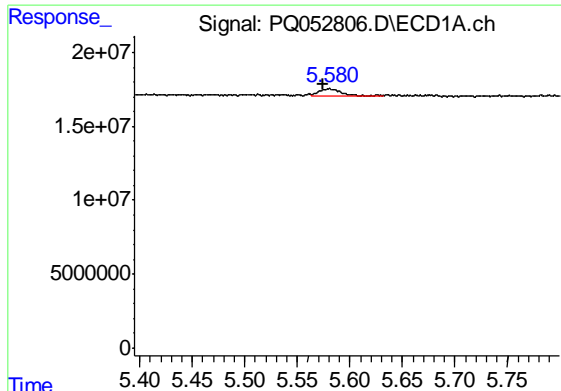
#2 Decachlorobiphenyl

R.T.: 11.414 min  
 Delta R.T.: 0.002 min  
 Response: 904728311  
 Conc: 36.59 ng/ml



#2 Decachlorobiphenyl

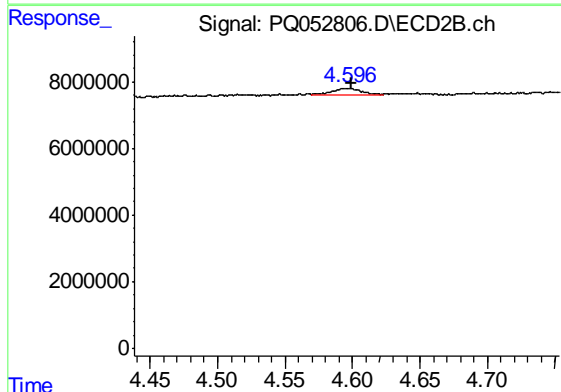
R.T.: 9.583 min  
 Delta R.T.: 0.000 min  
 Response: 359219911  
 Conc: 36.30 ng/ml



#9 AR-1221-2

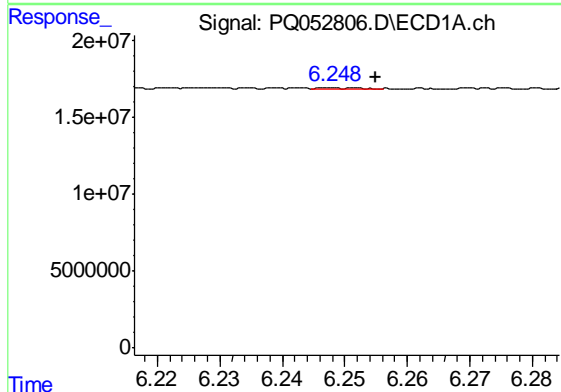
R.T.: 5.581 min  
 Delta R.T.: 0.006 min  
 Response: 6492984  
 Conc: 38.25 ng/ml

Instrument :  
 ECD\_Q  
 ClientSampleId :  
 ABLK56



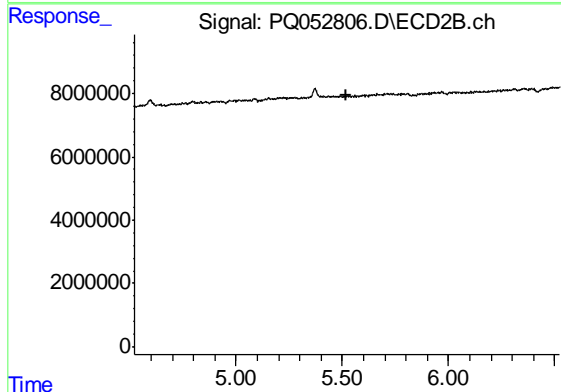
#9 AR-1221-2

R.T.: 4.596 min  
 Delta R.T.: -0.003 min  
 Response: 2940554  
 Conc: 39.34 ng/ml



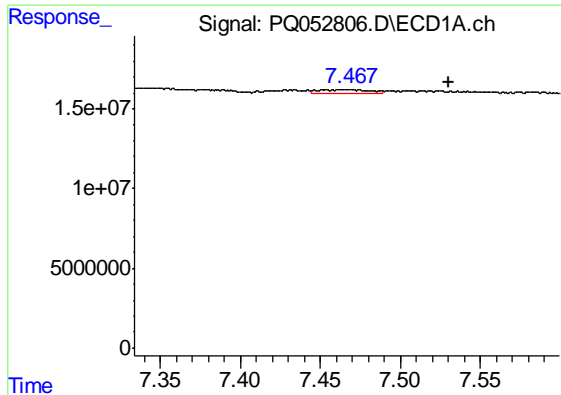
#12 AR-1232-2

R.T.: 6.248 min  
 Delta R.T.: -0.007 min  
 Response: 336610  
 Conc: 1.33 ng/ml



#12 AR-1232-2

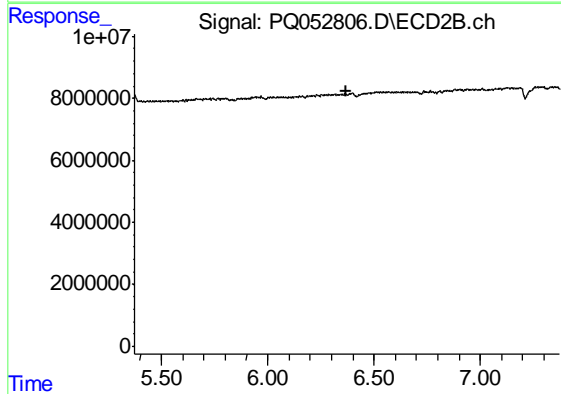
R.T.: 0.000 min  
 Exp R.T. : 5.522 min  
 Response: 0  
 Conc: N.D.



#20 AR-1242-5

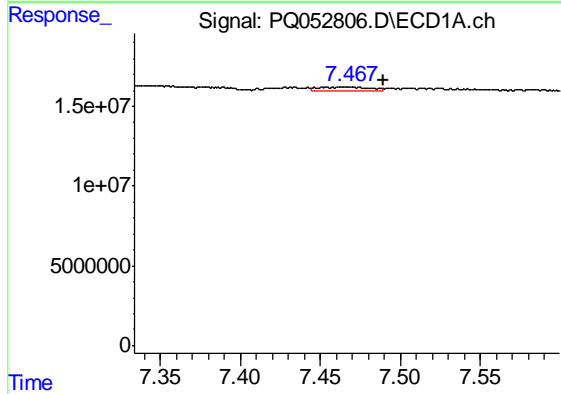
R.T.: 7.468 min  
 Delta R.T.: -0.062 min  
 Response: 5571279  
 Conc: 8.32 ng/ml

Instrument :  
 ECD\_Q  
 ClientSampleId :  
 ABLK56



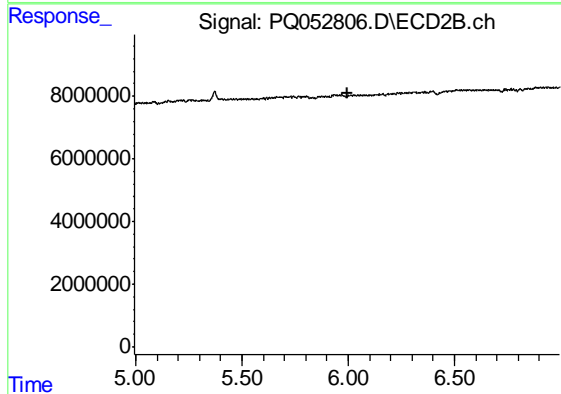
#20 AR-1242-5

R.T.: 0.000 min  
 Exp R.T. : 6.373 min  
 Response: 0  
 Conc: N.D.



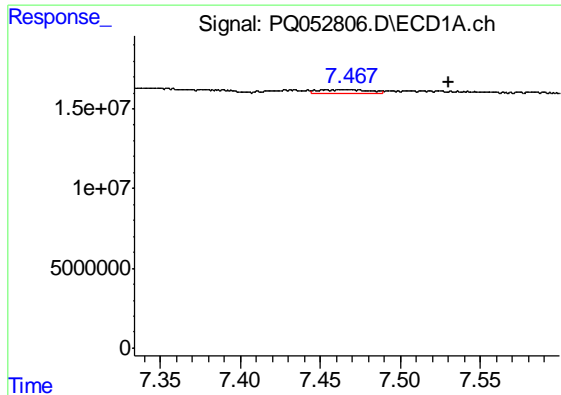
#24 AR-1248-4

R.T.: 7.468 min  
 Delta R.T.: -0.022 min  
 Response: 5571279  
 Conc: 5.21 ng/ml



#24 AR-1248-4

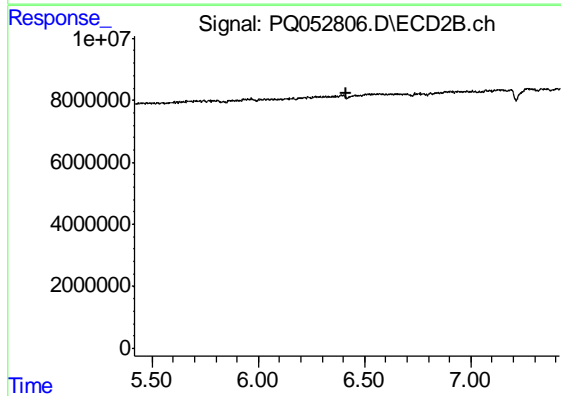
R.T.: 0.000 min  
 Exp R.T. : 5.994 min  
 Response: 0  
 Conc: N.D.



#25 AR-1248-5

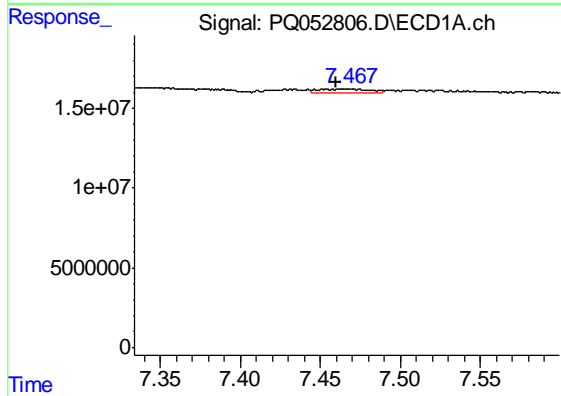
R.T.: 7.468 min  
 Delta R.T.: -0.062 min  
 Response: 5571279  
 Conc: 5.24 ng/ml

Instrument :  
 ECD\_Q  
 ClientSampleId :  
 ABLK56



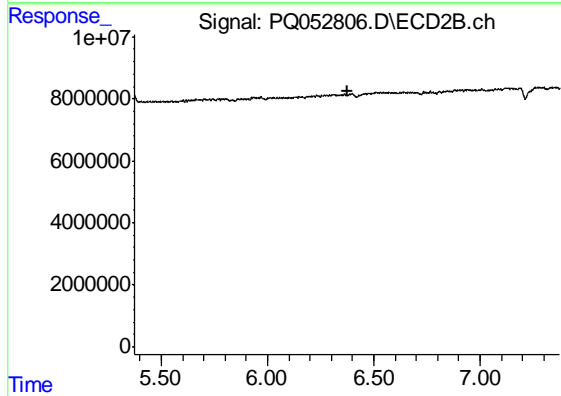
#25 AR-1248-5

R.T.: 0.000 min  
 Exp R.T. : 6.417 min  
 Response: 0  
 Conc: N.D.



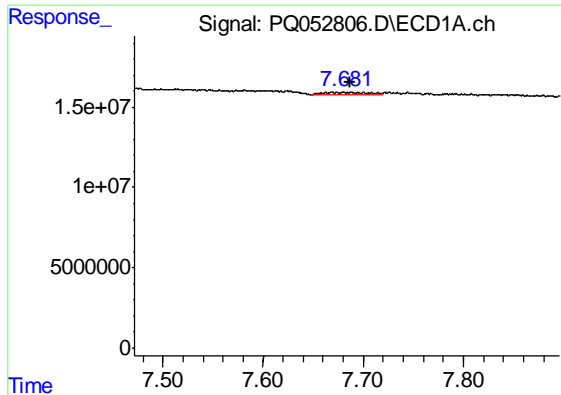
#26 AR-1254-1

R.T.: 7.468 min  
 Delta R.T.: 0.008 min  
 Response: 5571279  
 Conc: 4.10 ng/ml



#26 AR-1254-1

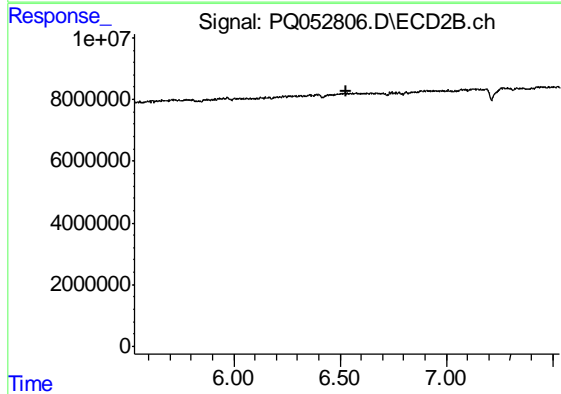
R.T.: 0.000 min  
 Exp R.T. : 6.374 min  
 Response: 0  
 Conc: N.D.



#27 AR-1254-2

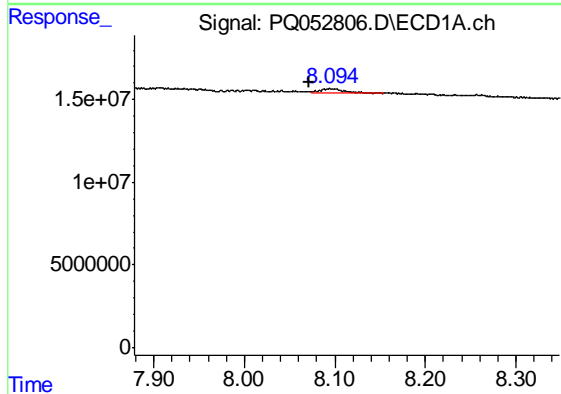
R.T.: 7.681 min  
 Delta R.T.: -0.007 min  
 Response: 4170601  
 Conc: 1.95 ng/ml

Instrument :  
 ECD\_Q  
 ClientSampled :  
 ABLK56



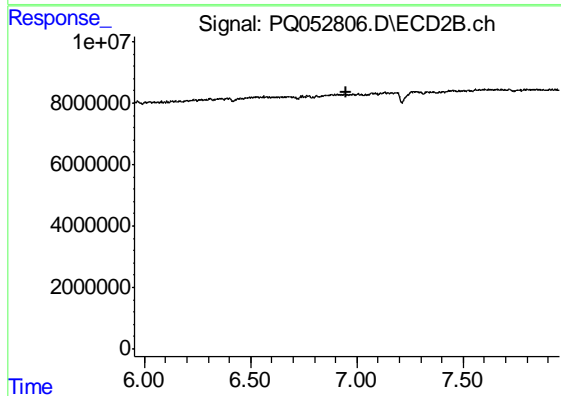
#27 AR-1254-2

R.T.: 0.000 min  
 Exp R.T. : 6.532 min  
 Response: 0  
 Conc: N.D.



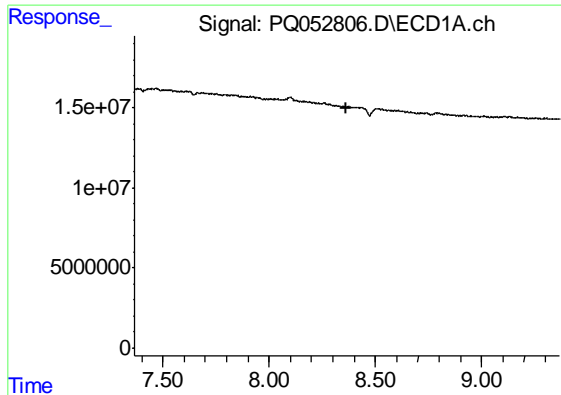
#28 AR-1254-3

R.T.: 8.095 min  
 Delta R.T.: 0.024 min  
 Response: 4594453  
 Conc: 1.96 ng/ml



#28 AR-1254-3

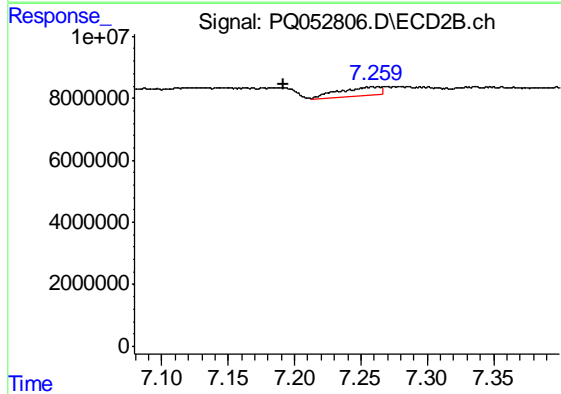
R.T.: 0.000 min  
 Exp R.T. : 6.953 min  
 Response: 0  
 Conc: N.D.



#29 AR-1254-4

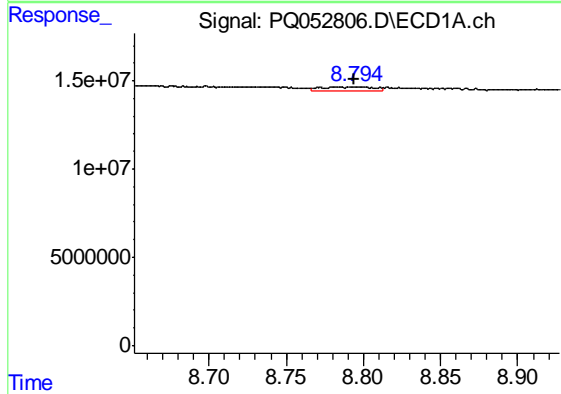
R.T.: 0.000 min  
 Exp R.T. : 8.366 min  
 Response: 0  
 Conc: N.D.

Instrument :  
 ECD\_Q  
 ClientSampled :  
 ABLK56



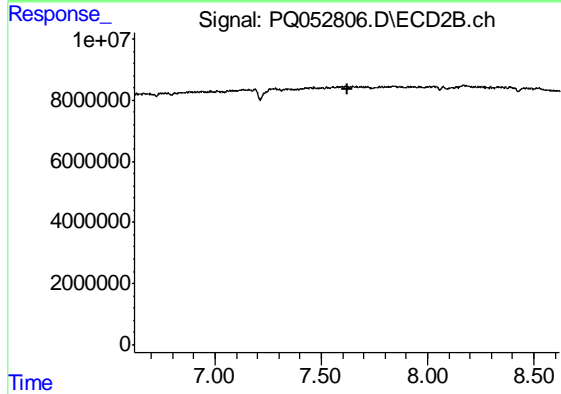
#29 AR-1254-4

R.T.: 7.259 min  
 Delta R.T.: 0.067 min  
 Response: 5696431  
 Conc: 6.40 ng/ml



#30 AR-1254-5

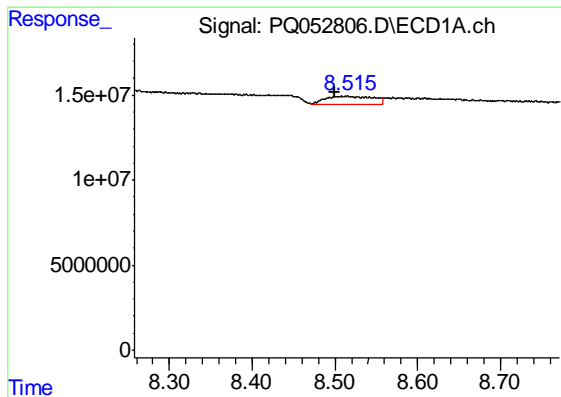
R.T.: 8.795 min  
 Delta R.T.: 0.001 min  
 Response: 5191671  
 Conc: 2.83 ng/ml



#30 AR-1254-5

R.T.: 0.000 min  
 Exp R.T. : 7.621 min  
 Response: 0  
 Conc: N.D.

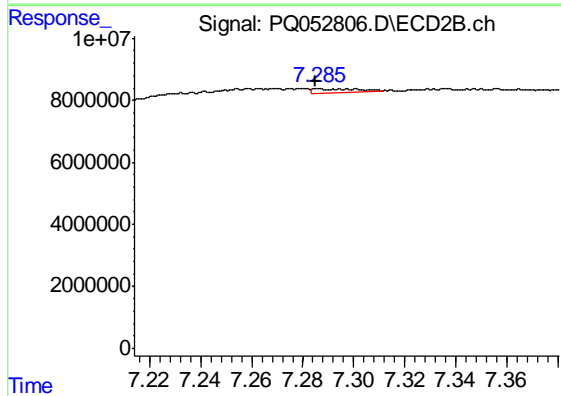




#32 AR-1260-2

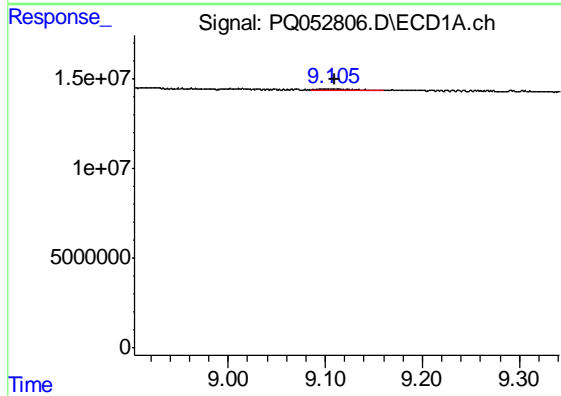
R.T.: 8.514 min  
 Delta R.T.: 0.014 min  
 Response: 17931970  
 Conc: 13.65 ng/ml

Instrument :  
 ECD\_Q  
 ClientSampled :  
 ABLK56



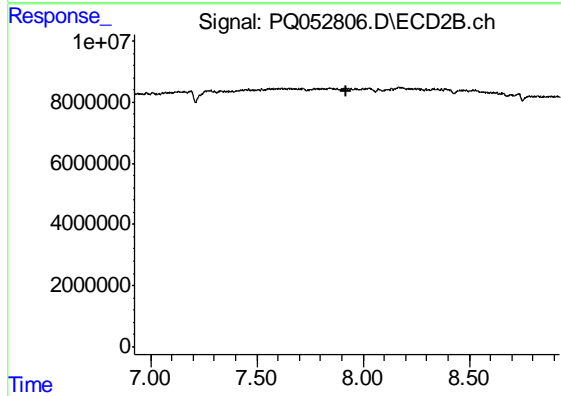
#32 AR-1260-2

R.T.: 7.286 min  
 Delta R.T.: 0.000 min  
 Response: 1783142  
 Conc: 2.24 ng/ml



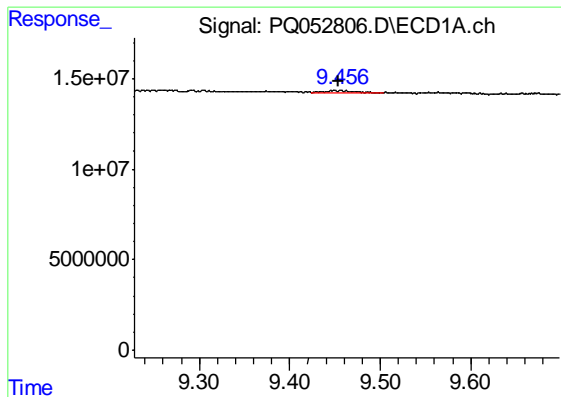
#34 AR-1260-4

R.T.: 9.106 min  
 Delta R.T.: -0.004 min  
 Response: 1753167  
 Conc: 1.53 ng/ml



#34 AR-1260-4

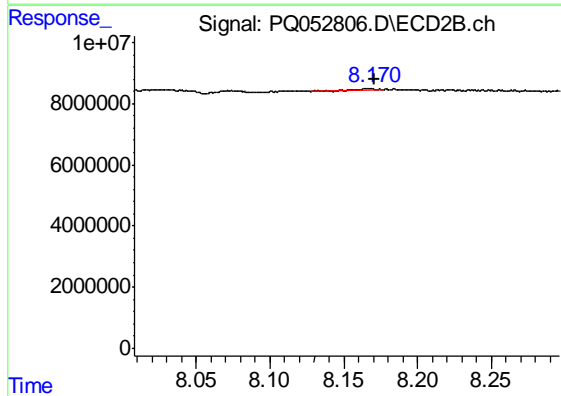
R.T.: 0.000 min  
 Exp R.T. : 7.924 min  
 Response: 0  
 Conc: N.D.



#35 AR-1260-5

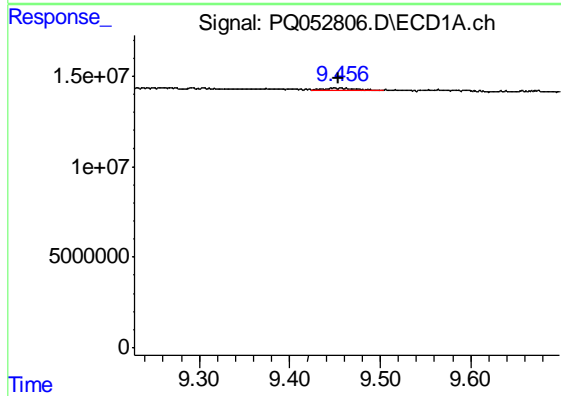
R.T.: 9.450 min  
 Delta R.T.: -0.004 min  
 Response: 2478686  
 Conc: 1.04 ng/ml

Instrument :  
 ECD\_Q  
 ClientSampled :  
 ABLK56



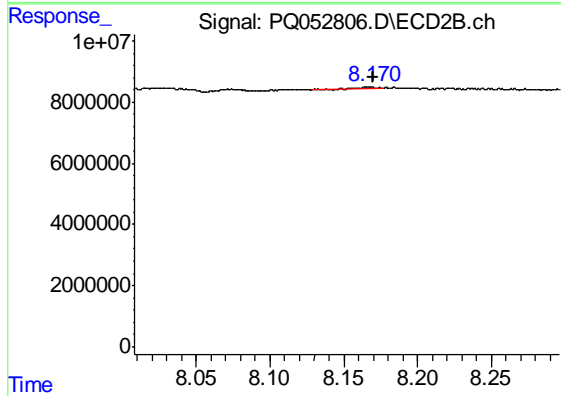
#35 AR-1260-5

R.T.: 8.169 min  
 Delta R.T.: -0.001 min  
 Response: 567795  
 Conc: 0.37 ng/ml



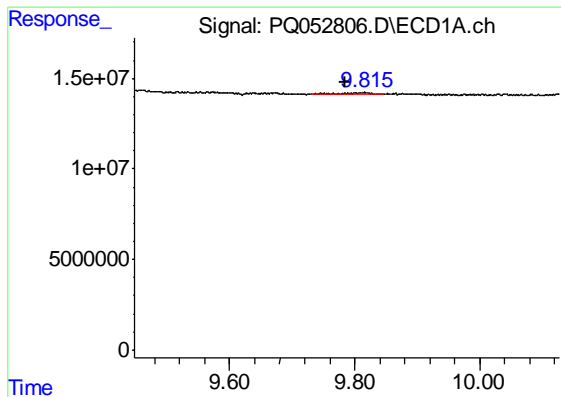
#37 AR-1262-2

R.T.: 9.450 min  
 Delta R.T.: -0.004 min  
 Response: 2478686  
 Conc: 0.74 ng/ml



#37 AR-1262-2

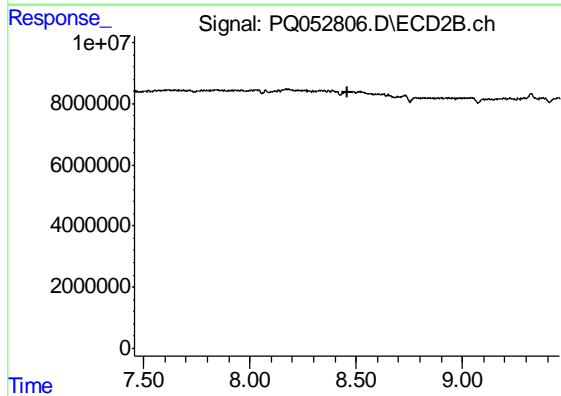
R.T.: 8.169 min  
 Delta R.T.: 0.000 min  
 Response: 567795  
 Conc: 0.27 ng/ml



#38 AR-1262-3

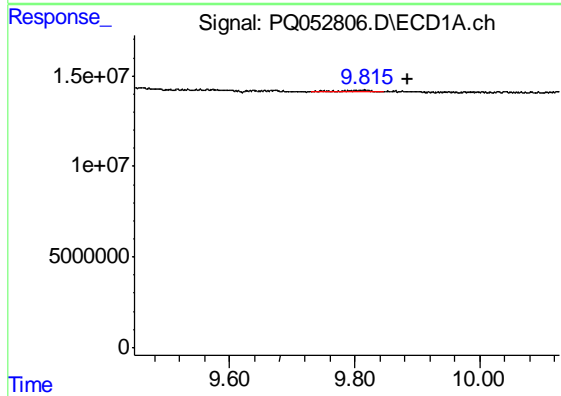
R.T.: 9.816 min  
 Delta R.T.: 0.032 min  
 Response: 2280894  
 Conc: 1.03 ng/ml

Instrument :  
 ECD\_Q  
 ClientSampled :  
 ABLK56



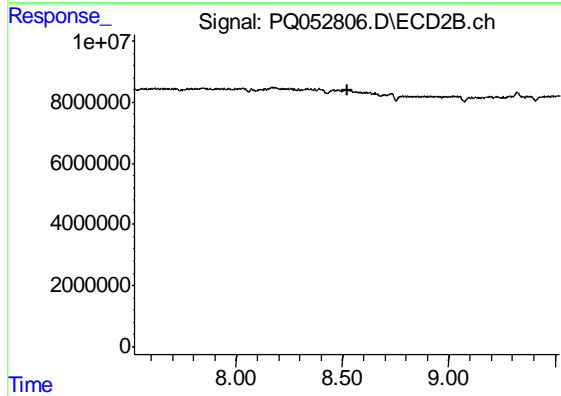
#38 AR-1262-3

R.T.: 0.000 min  
 Exp R.T. : 8.457 min  
 Response: 0  
 Conc: N.D.



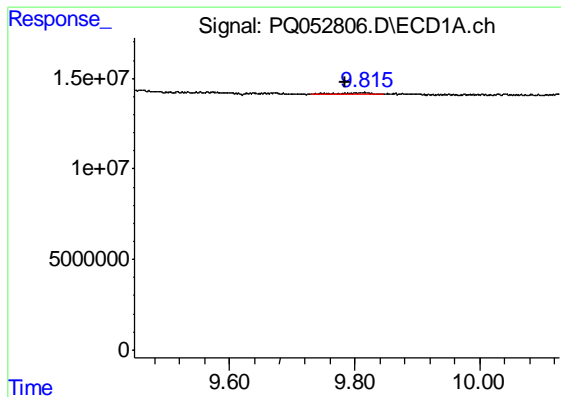
#39 AR-1262-4

R.T.: 9.816 min  
 Delta R.T.: -0.068 min  
 Response: 2280894  
 Conc: 1.31 ng/ml



#39 AR-1262-4

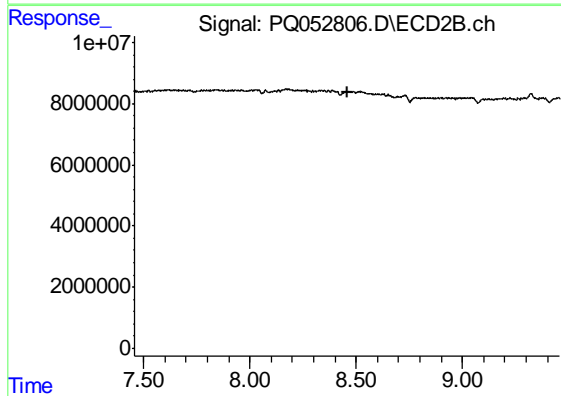
R.T.: 0.000 min  
 Exp R.T. : 8.521 min  
 Response: 0  
 Conc: N.D.



#41 AR-1268-1

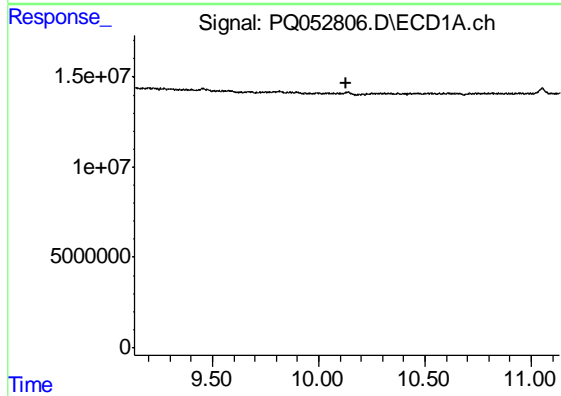
R.T.: 9.816 min  
 Delta R.T.: 0.032 min  
 Response: 2280894  
 Conc: 0.58 ng/ml

Instrument :  
 ECD\_Q  
 ClientSampleId :  
 ABLK56



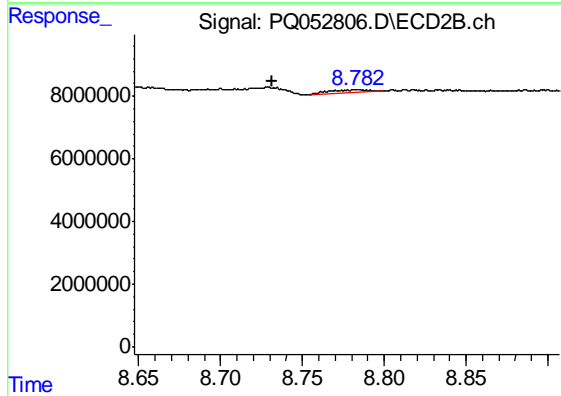
#41 AR-1268-1

R.T.: 0.000 min  
 Exp R.T. : 8.457 min  
 Response: 0  
 Conc: N.D.



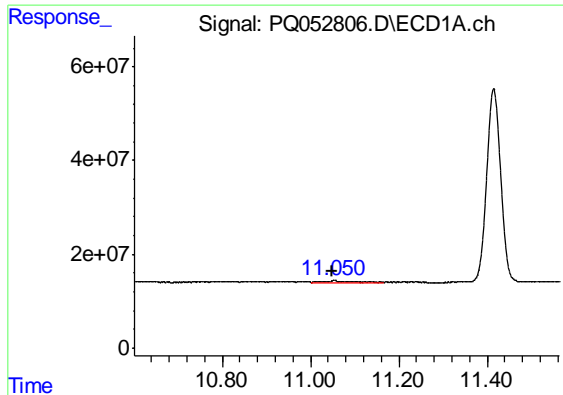
#43 AR-1268-3

R.T.: 0.000 min  
 Exp R.T. : 10.133 min  
 Response: 0  
 Conc: N.D.



#43 AR-1268-3

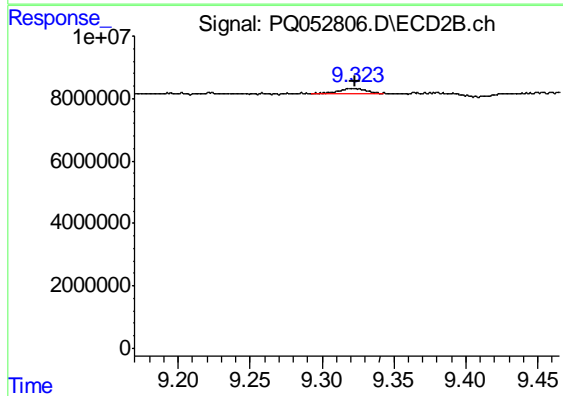
R.T.: 8.782 min  
 Delta R.T.: 0.050 min  
 Response: 1704274  
 Conc: 0.96 ng/ml



#45 AR-1268-5

R.T.: 11.053 min  
 Delta R.T.: 0.004 min  
 Response: 9306518  
 Conc: 0.87 ng/ml

Instrument :  
 ECD\_Q  
 ClientSampleId :  
 ABLK56



#45 AR-1268-5

R.T.: 9.323 min  
 Delta R.T.: 0.000 min  
 Response: 2201240  
 Conc: 0.46 ng/ml