

Data Path : Z:\pestpcbsrv\HPCHEM1\ECD\_Q\Data\PQ040319\  
 Data File : PQ038628.D  
 Signal(s) : Signal #1: ECD1A.ch Signal #2: ECD2B.ch  
 Acq On : 03 Apr 2019 14:23  
 Operator : AJ\SJ  
 Sample : K1560-01  
 Misc : AR1660 LOD 25 PPB  
 ALS Vial : 5 Sample Multiplier: 1

Instrument :  
 ECD\_Q  
 ClientSampleId :  
 LOD-MDL-SOIL-01-QT1-2019

Integration File signal 1: autoint1.e  
 Integration File signal 2: autoint2.e  
 Quant Time: Apr 06 02:16:01 2019  
 Quant Method : Z:\pestpcbsrv\HPCHEM1\ECD\_Q\Method\PQ040319.M  
 Quant Title : GC EXTRACTABLES  
 QLast Update : Thu Apr 04 03:26:03 2019  
 Response via : Initial Calibration  
 Integrator: ChemStation

Volume Inj. : 2 µl  
 Signal #1 Phase : ZB-MR2 Signal #2 Phase: ZB-MR2  
 Signal #1 Info : 30Mx0.32mmx 0.50µ Signal #2 Info : 30M x 0.32mm x 0.25µm

Compound	RT#1	RT#2	Resp#1	Resp#2	ng/ml	ng/ml
-----						
System Monitoring Compounds						
1) SA Tetrachlo...	4.705	3.985	165.5E6	89994453	22.370	21.961
2) SA Decachlor...	10.643	9.102	114.8E6	68711531	22.050	22.043
Target Compounds						
3) L1 AR-1016-1	5.885	5.084	6923965	3954857	30.259m	28.331m
4) L1 AR-1016-2	5.907	5.104	10193409	5066321	30.310m	25.289m
5) L1 AR-1016-3	5.970	5.285	6386667	2293685	31.826m	24.860
6) L1 AR-1016-4	6.069	5.323	4772499	2533761	29.001m	31.634
7) L1 AR-1016-5	6.366	5.541	4992216	2984626	31.558	29.123
31) L7 AR-1260-1	7.496	6.578	9012475	5767170	35.465	31.923
32) L7 AR-1260-2	7.752	6.764	11002151	7270186	37.074	33.422
33) L7 AR-1260-3	8.114	6.923	7640342	6121403	33.367m	30.027
34) L7 AR-1260-4	8.354	7.396	8435293	4970046	31.817m	29.461
35) L7 AR-1260-5	8.695	7.634	16578663	10992765	32.631	27.204

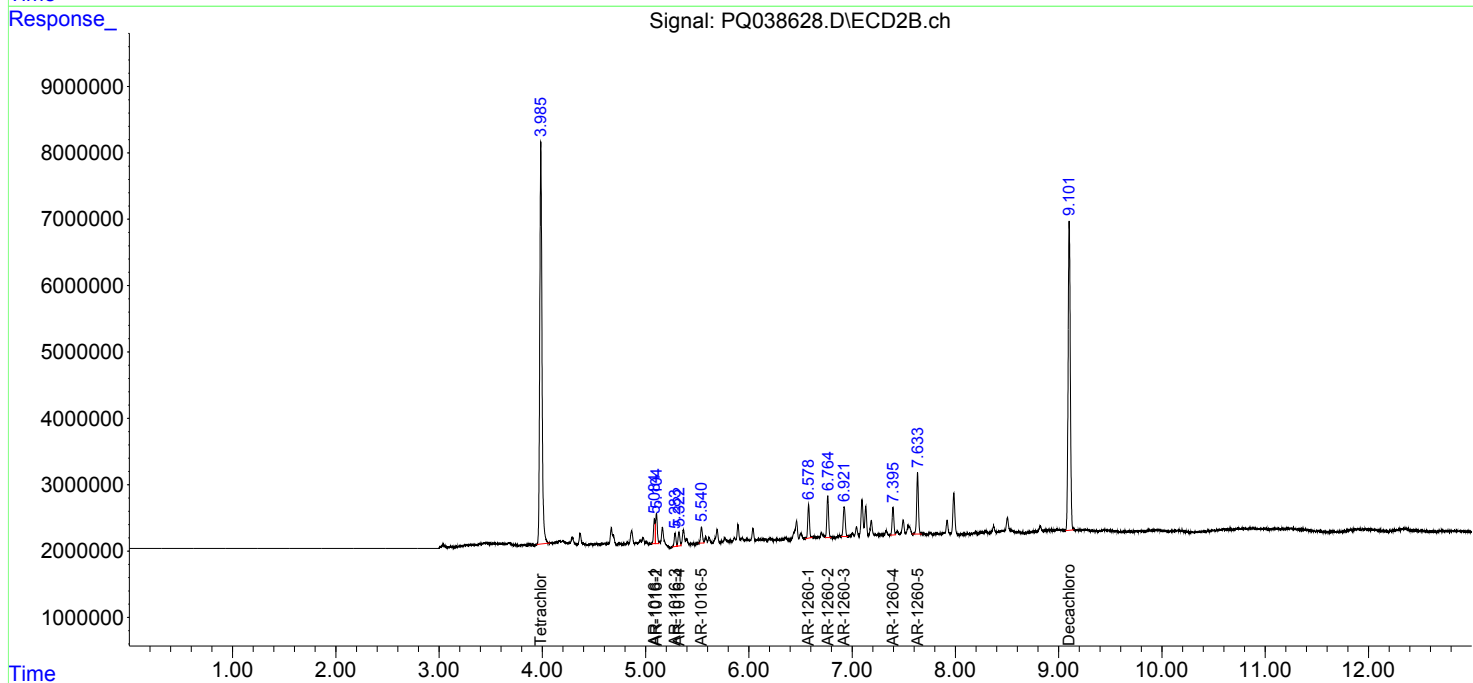
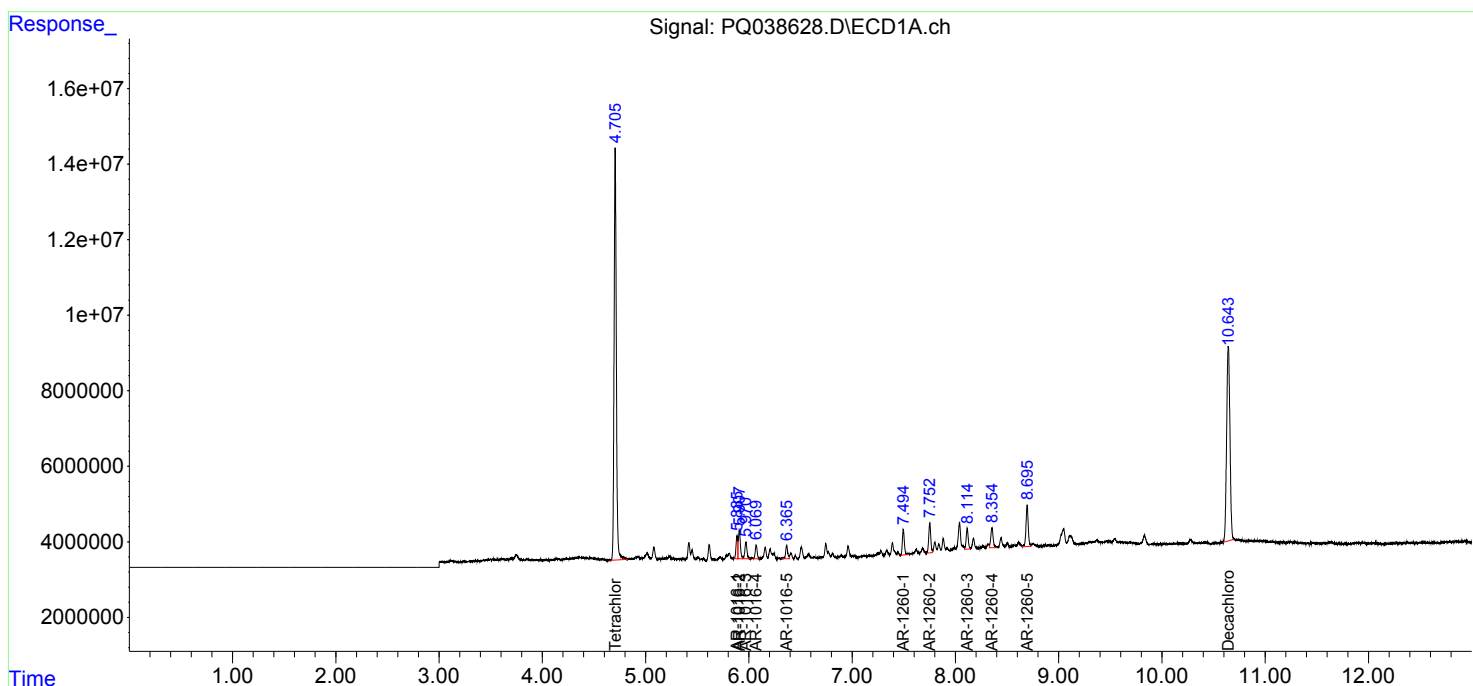
(f)=RT Delta > 1/2 Window (#)=Amounts differ by > 25% (m)=manual int.

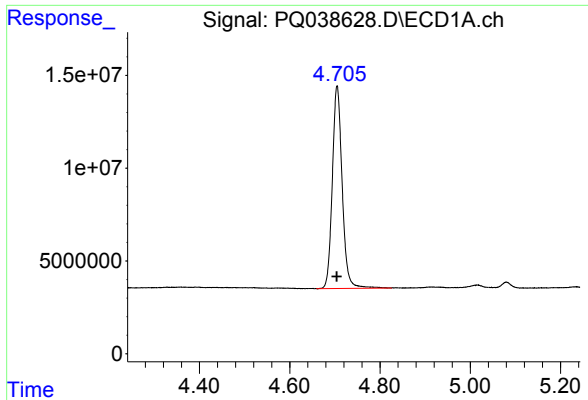
Data Path : Z:\pestpcbsrv\HPCHEM1\ECD\_Q\Data\PQ040319\  
 Data File : PQ038628.D  
 Signal(s) : Signal #1: ECD1A.ch Signal #2: ECD2B.ch  
 Acq On : 03 Apr 2019 14:23  
 Operator : AJ\SJ  
 Sample : K1560-01  
 Misc : AR1660 LOD 25 PPB  
 ALS Vial : 5 Sample Multiplier: 1

Instrument :  
 ECD\_Q  
 ClientSampled :  
 LOD-MDL-SOIL-01-QT1-2019

Integration File signal 1: autoint1.e  
 Integration File signal 2: autoint2.e  
 Quant Time: Apr 06 02:16:01 2019  
 Quant Method : Z:\pestpcbsrv\HPCHEM1\ECD\_Q\Method\PQ040319.M  
 Quant Title : GC EXTRACTABLES  
 QLast Update : Thu Apr 04 03:26:03 2019  
 Response via : Initial Calibration  
 Integrator: ChemStation

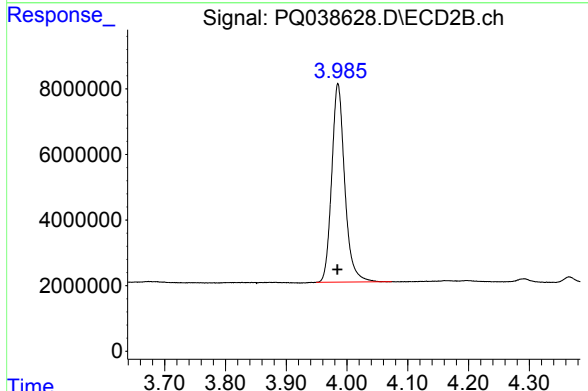
Volume Inj. : 2 µl  
 Signal #1 Phase : ZB-MR1 Signal #2 Phase: ZB-MR2  
 Signal #1 Info : 30Mx0.32mmx 0.50µ Signal #2 Info : 30M x 0.32mm x 0.25µm



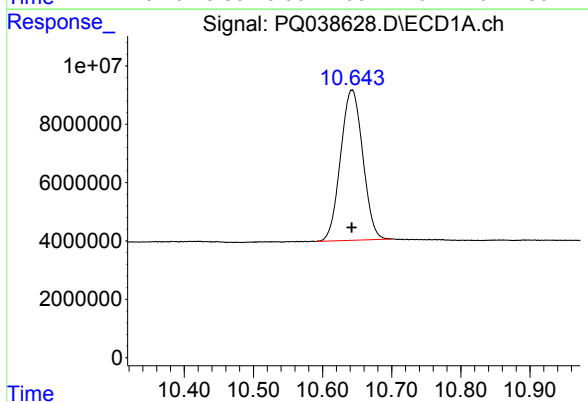


#1 Tetrachloro-m-xylene  
 R.T.: 4.705 min  
 Delta R.T.: 0.001 min  
 Response: 165471129  
 Conc: 22.37 ng/ml

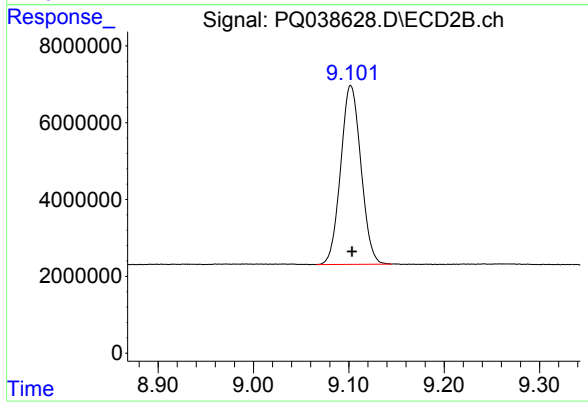
Instrument :  
 ECD\_Q  
 ClientSampleId :  
 LOD-MDL-SOIL-01-QT1-2019



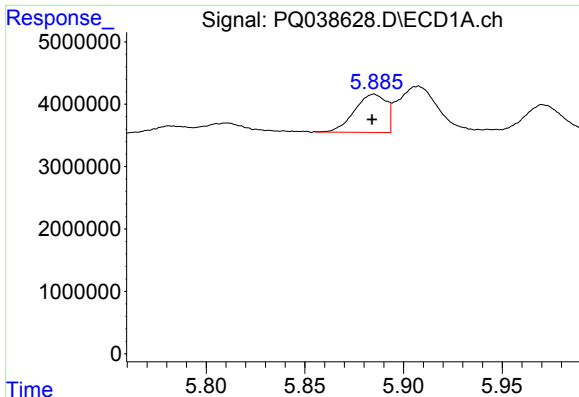
#1 Tetrachloro-m-xylene  
 R.T.: 3.985 min  
 Delta R.T.: 0.001 min  
 Response: 89994453  
 Conc: 21.96 ng/ml



#2 Decachlorobiphenyl  
 R.T.: 10.643 min  
 Delta R.T.: 0.000 min  
 Response: 114789910  
 Conc: 22.05 ng/ml



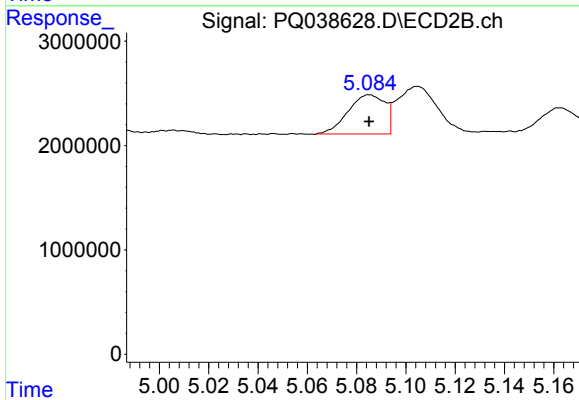
#2 Decachlorobiphenyl  
 R.T.: 9.102 min  
 Delta R.T.: -0.001 min  
 Response: 68711531  
 Conc: 22.04 ng/ml



#3 AR-1016-1

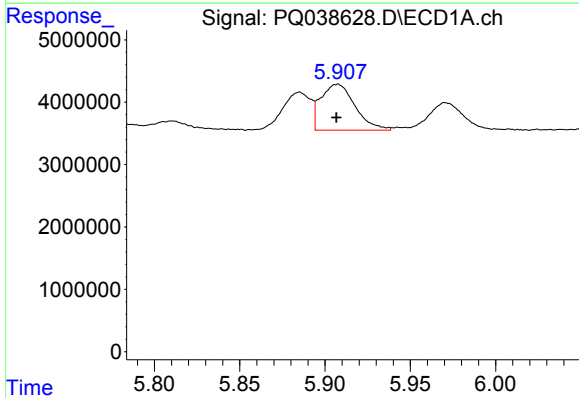
R.T.: 5.885 min  
 Delta R.T.: 0.000 min  
 Response: 6923965  
 Conc: 30.26 ng/ml m

Instrument :  
 ECD\_Q  
 ClientSampleId :  
 LOD-MDL-SOIL-01-QT1-2019



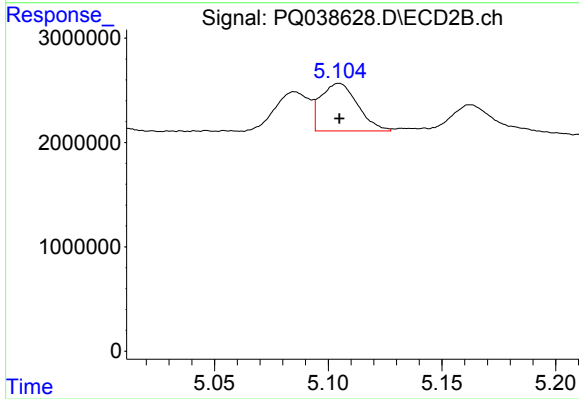
#3 AR-1016-1

R.T.: 5.084 min  
 Delta R.T.: 0.000 min  
 Response: 3954857  
 Conc: 28.33 ng/ml m



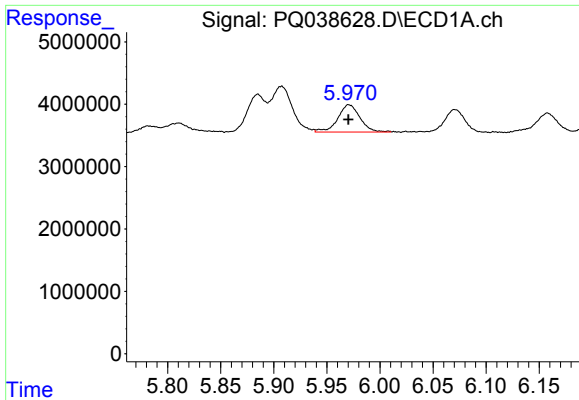
#4 AR-1016-2

R.T.: 5.907 min  
 Delta R.T.: 0.000 min  
 Response: 10193409  
 Conc: 30.31 ng/ml m



#4 AR-1016-2

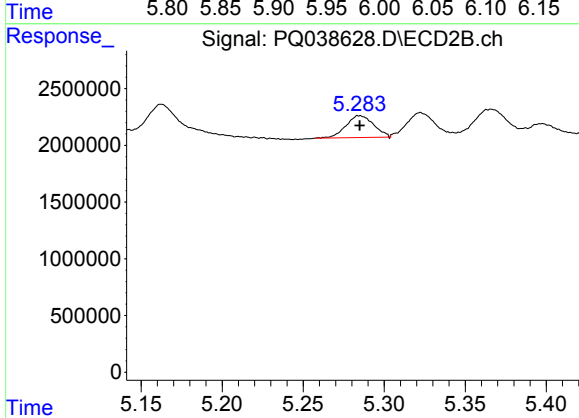
R.T.: 5.104 min  
 Delta R.T.: 0.000 min  
 Response: 5066321  
 Conc: 25.29 ng/ml m



#5 AR-1016-3

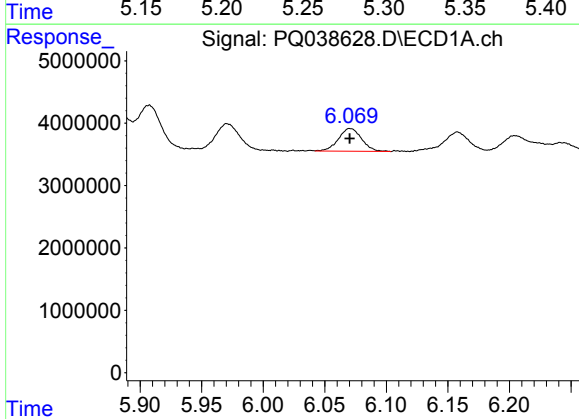
R.T.: 5.970 min  
 Delta R.T.: 0.000 min  
 Response: 6386667  
 Conc: 31.83 ng/ml m

Instrument :  
 ECD\_Q  
 ClientSampleId :  
 LOD-MDL-SOIL-01-QT1-2019



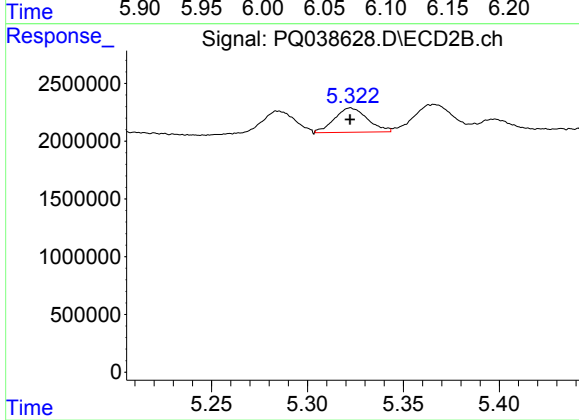
#5 AR-1016-3

R.T.: 5.285 min  
 Delta R.T.: 0.000 min  
 Response: 2293685  
 Conc: 24.86 ng/ml



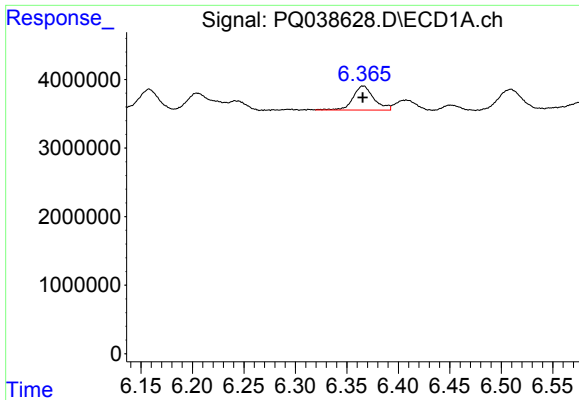
#6 AR-1016-4

R.T.: 6.069 min  
 Delta R.T.: 0.000 min  
 Response: 4772499  
 Conc: 29.00 ng/ml m



#6 AR-1016-4

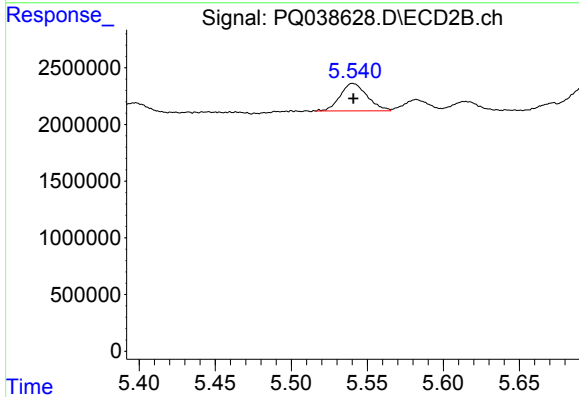
R.T.: 5.323 min  
 Delta R.T.: 0.000 min  
 Response: 2533761  
 Conc: 31.63 ng/ml



#7 AR-1016-5

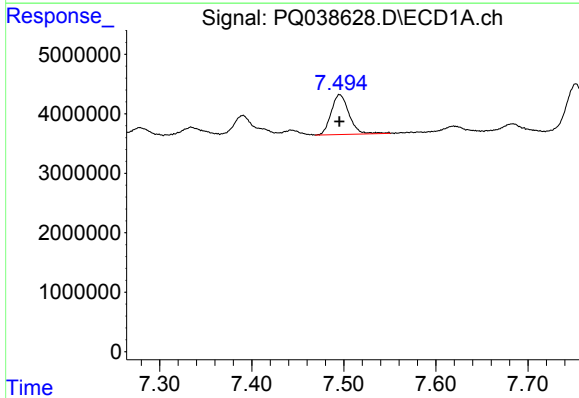
R.T.: 6.366 min  
 Delta R.T.: 0.000 min  
 Response: 4992216  
 Conc: 31.56 ng/ml

Instrument :  
 ECD\_Q  
 ClientSampleId :  
 LOD-MDL-SOIL-01-QT1-2019



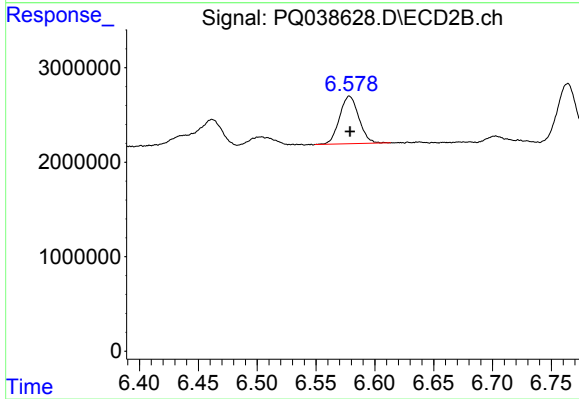
#7 AR-1016-5

R.T.: 5.541 min  
 Delta R.T.: 0.000 min  
 Response: 2984626  
 Conc: 29.12 ng/ml



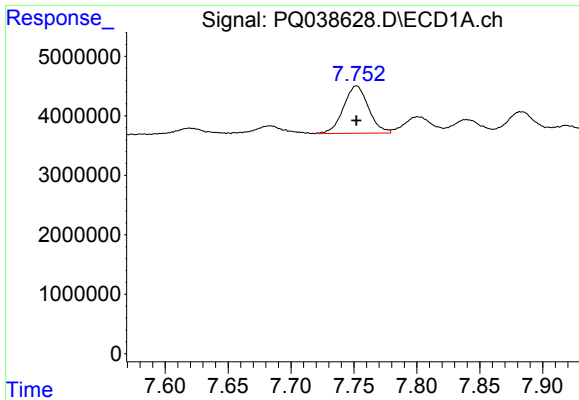
#31 AR-1260-1

R.T.: 7.496 min  
 Delta R.T.: 0.000 min  
 Response: 9012475  
 Conc: 35.46 ng/ml



#31 AR-1260-1

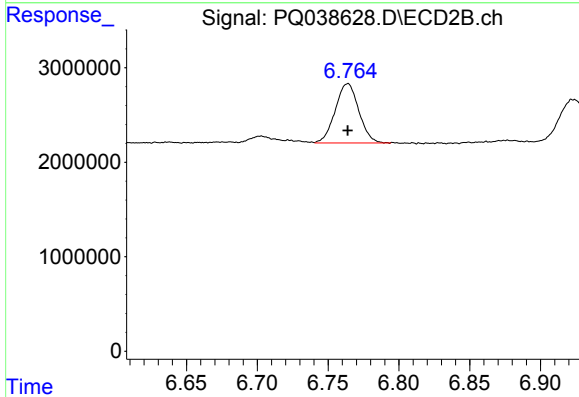
R.T.: 6.578 min  
 Delta R.T.: 0.000 min  
 Response: 5767170  
 Conc: 31.92 ng/ml



#32 AR-1260-2

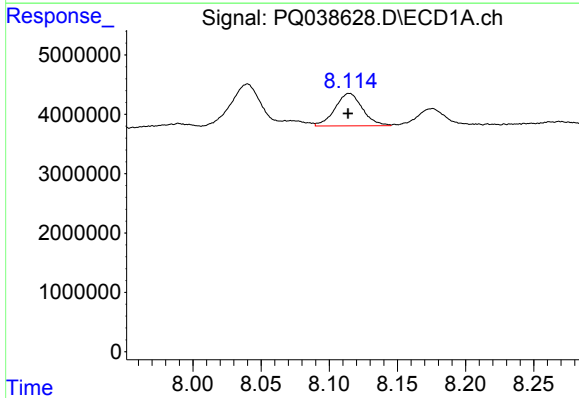
R.T.: 7.752 min  
 Delta R.T.: 0.000 min  
 Response: 11002151  
 Conc: 37.07 ng/ml

**Instrument :**  
 ECD\_Q  
**ClientSampleId :**  
 LOD-MDL-SOIL-01-QT1-2019



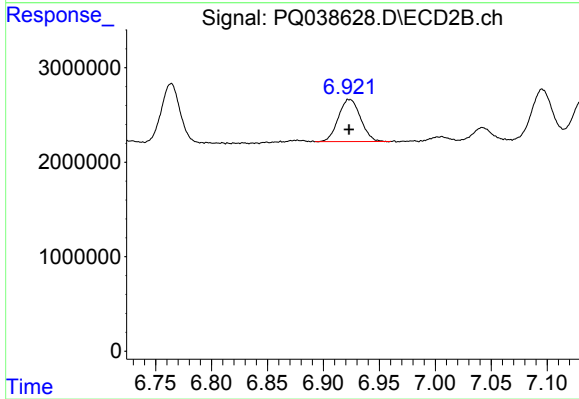
#32 AR-1260-2

R.T.: 6.764 min  
 Delta R.T.: 0.000 min  
 Response: 7270186  
 Conc: 33.42 ng/ml



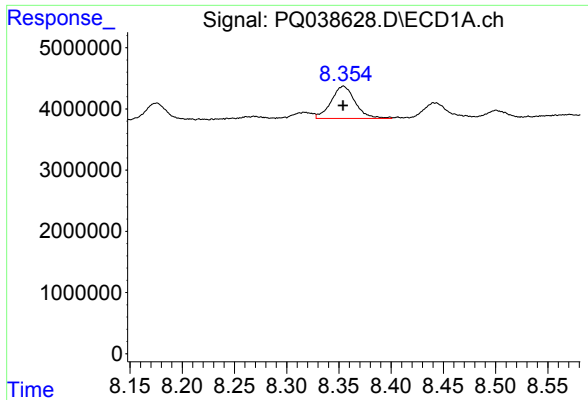
#33 AR-1260-3

R.T.: 8.114 min  
 Delta R.T.: 0.000 min  
 Response: 7640342  
 Conc: 33.37 ng/ml m



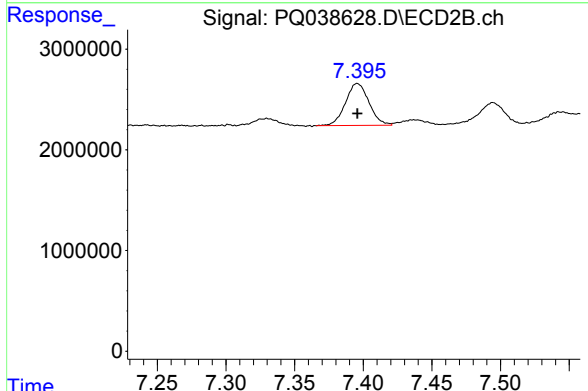
#33 AR-1260-3

R.T.: 6.923 min  
 Delta R.T.: 0.000 min  
 Response: 6121403  
 Conc: 30.03 ng/ml

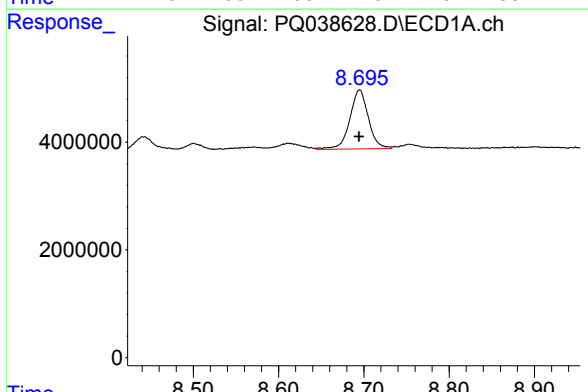


#34 AR-1260-4  
 R.T.: 8.354 min  
 Delta R.T.: 0.000 min  
 Response: 8435293  
 Conc: 31.82 ng/ml m

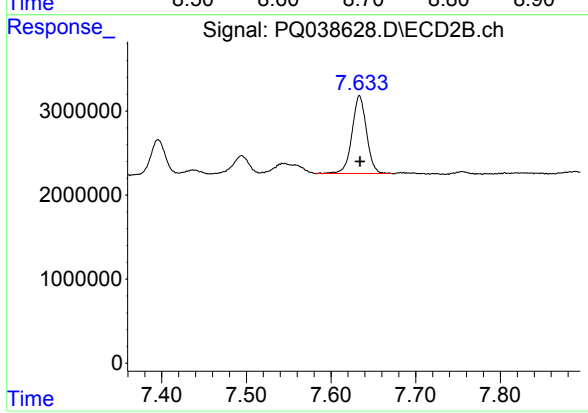
**Instrument :**  
 ECD\_Q  
**ClientSampleId :**  
 LOD-MDL-SOIL-01-QT1-2019



#34 AR-1260-4  
 R.T.: 7.396 min  
 Delta R.T.: 0.000 min  
 Response: 4970046  
 Conc: 29.46 ng/ml



#35 AR-1260-5  
 R.T.: 8.695 min  
 Delta R.T.: 0.000 min  
 Response: 16578663  
 Conc: 32.63 ng/ml



#35 AR-1260-5  
 R.T.: 7.634 min  
 Delta R.T.: 0.000 min  
 Response: 10992765  
 Conc: 27.20 ng/ml