

Data Path : Z:\pestpcbsrv\HPCHEM1\ECD\_Q\Data\PQ040519\  
 Data File : PQ038795.D  
 Signal(s) : Signal #1: ECD1A.ch Signal #2: ECD2B.ch  
 Acq On : 06 Apr 2019 00:56  
 Operator : AJ\SJ  
 Sample : AIBLK11  
 Misc :  
 ALS Vial : 2 Sample Multiplier: 1

Instrument :  
 ECD\_Q  
 ClientSampled :  
 AIBLK11

Integration File signal 1: autoint1.e  
 Integration File signal 2: autoint2.e  
 Quant Time: Apr 06 01:23:19 2019  
 Quant Method : Z:\pestpcbsrv\HPCHEM1\ECD\_Q\Method\PQ040419CLP.M  
 Quant Title : GC EXTRACTABLES  
 QLast Update : Fri Apr 05 05:12:40 2019  
 Response via : Initial Calibration  
 Integrator: ChemStation

Volume Inj. : 1 µl  
 Signal #1 Phase : ZB MR1 Signal #2 Phase: ZB MR2  
 Signal #1 Info : 30Mx0.32mmx 0.5µm Signal #2 Info : 30M x 0.32mm x 0.25µm

Compound	RT#1	RT#2	Resp#1	Resp#2	ng/ml	ng/ml
System Monitoring Compounds						
1) SA Tetrachlo...	5.724	4.816	98882171	57126535	20.638	25.076
2) SA Decachlor...	12.133	10.584	228.2E6	126.7E6	34.496	37.238
Target Compounds						
3) L1 AR-1016-1	7.153	6.299	494122	656315	1.827	4.402 #
4) L1 AR-1016-2	7.242	6.299	2461242	656315	6.083	3.026 #
5) L1 AR-1016-3	7.242	6.481	2461242	1455733	9.617	12.909 #
6) L1 AR-1016-4	7.404	0.000	312450	0	1.495	N.D. #
7) L1 AR-1016-5	0.000	6.840	0	6347577	N.D.	49.161 #
8) L2 AR-1221-1	5.980	5.124	470368	43187	8.114	1.486 #
9) L2 AR-1221-2	6.117	5.237	2080309	900591	51.794	43.229
10) L2 AR-1221-3	6.274	5.364	410853	135761	2.910	1.849 #
11) L3 AR-1232-1	6.274	5.364	410853	135761	4.237	2.634 #
12) L3 AR-1232-2	0.000	6.299	0	656315	N.D.	11.278 #
13) L3 AR-1232-3	7.242	6.481	2461242	1455733	23.092	47.904 #
14) L3 AR-1232-4	7.404	6.678	312450	318874	5.646	11.414 #
15) L3 AR-1232-5	7.486	6.840	459314	6347577	11.777	193.487 #
16) L4 AR-1242-1	7.153	6.299	494122	656315	3.238	7.574 #
17) L4 AR-1242-2	7.242	6.299	2461242	656315	10.943	5.262 #
18) L4 AR-1242-3	7.242	6.481	2461242	1455733	17.373	21.719 #
19) L4 AR-1242-4	7.404	6.678	312450	318874	2.700	4.721 #
20) L4 AR-1242-5	0.000	7.251	0	7839542	N.D.	82.098 #
21) L5 AR-1248-1	7.153	6.299	494122	656315	4.688	10.884 #
22) L5 AR-1248-2	7.486	0.000	459314	0	3.068	N.D. #
23) L5 AR-1248-3	0.000	6.678	0	318874	N.D.	3.591 #
24) L5 AR-1248-4	8.132	6.840	2618510	6347577	12.886	55.364 #
25) L5 AR-1248-5	0.000	7.251	0	7839542	N.D.	68.092 #
26) L6 AR-1254-1	8.132	7.251	2618510	7839542	12.135	42.664 #
27) L6 AR-1254-2	8.366	7.417	2166372	3880963	6.395	23.977 #
28) L6 AR-1254-3	8.771	7.835	8326766	2349287	22.404	8.315 #
29) L6 AR-1254-4	9.064	8.135	912649	2842823	3.579	17.133 #
30) L6 AR-1254-5	9.535	8.534	1743162	413048	5.849	1.677 #
31) L7 AR-1260-1	8.964	7.960	5182288	2777823	10.834	9.170
32) L7 AR-1260-2	9.274	8.172	11652825	1499113	20.515	4.047 #
33) L7 AR-1260-3	9.557	8.398	1280550	1495940	2.939	4.267 #
34) L7 AR-1260-4	9.848	8.807	4041240	358411	7.874	1.241 #
35) L7 AR-1260-5	10.173	0.000	1939449	0	1.868	N.D. #
36) L8 AR-1262-1	9.557	8.594	1280550	416865	3.447	1.592 #
37) L8 AR-1262-2	10.173	0.000	1939449	0	2.934	N.D. #
38) L8 AR-1262-3	10.505	9.355	168381	402424	0.373	2.073 #
39) L8 AR-1262-4	10.556	9.455	918494	93072	2.561	0.253 #
40) L8 AR-1262-5	11.313	9.995	3458795	1453186	13.901	9.620 #
41) L9 AR-1268-1	10.505	9.355	168381	402424	0.113	0.399 #

Data Path : Z:\pestpcbsrv\HPCHEM1\ECD\_Q\Data\PQ040519\  
 Data File : PQ038795.D  
 Signal(s) : Signal #1: ECD1A.ch Signal #2: ECD2B.ch  
 Acq On : 06 Apr 2019 00:56  
 Operator : AJ\SJ  
 Sample : AIBLK11  
 Misc :  
 ALS Vial : 2 Sample Multiplier: 1

Instrument :  
 ECD\_Q  
 ClientSampleId :  
 AIBLK11

Integration File signal 1: autoint1.e  
 Integration File signal 2: autoint2.e  
 Quant Time: Apr 06 01:23:19 2019  
 Quant Method : Z:\pestpcbsrv\HPCHEM1\ECD\_Q\Method\PQ040419CLP.M  
 Quant Title : GC EXTRACTABLES  
 QLast Update : Fri Apr 05 05:12:40 2019  
 Response via : Initial Calibration  
 Integrator: ChemStation

Volume Inj. : 1 µl  
 Signal #1 Phase : ZB MR1 Signal #2 Phase: ZB MR2  
 Signal #1 Info : 30Mx0.32mmx 0.5µm Signal #2 Info : 30M x 0.32mm x 0.25µm

	Compound	RT#1	RT#2	Resp#1	Resp#2	ng/ml	ng/ml
42)	L9 AR-1268-2	10.556	9.455	918494	93072	0.665	0.100 #
43)	L9 AR-1268-3	10.854	9.670	1451269	811123	1.184	1.026
44)	L9 AR-1268-4	11.313	9.995	3458795	1453186	6.895	4.675 #
45)	L9 AR-1268-5	11.768	10.300	2749719	3985981	0.652	1.601 #

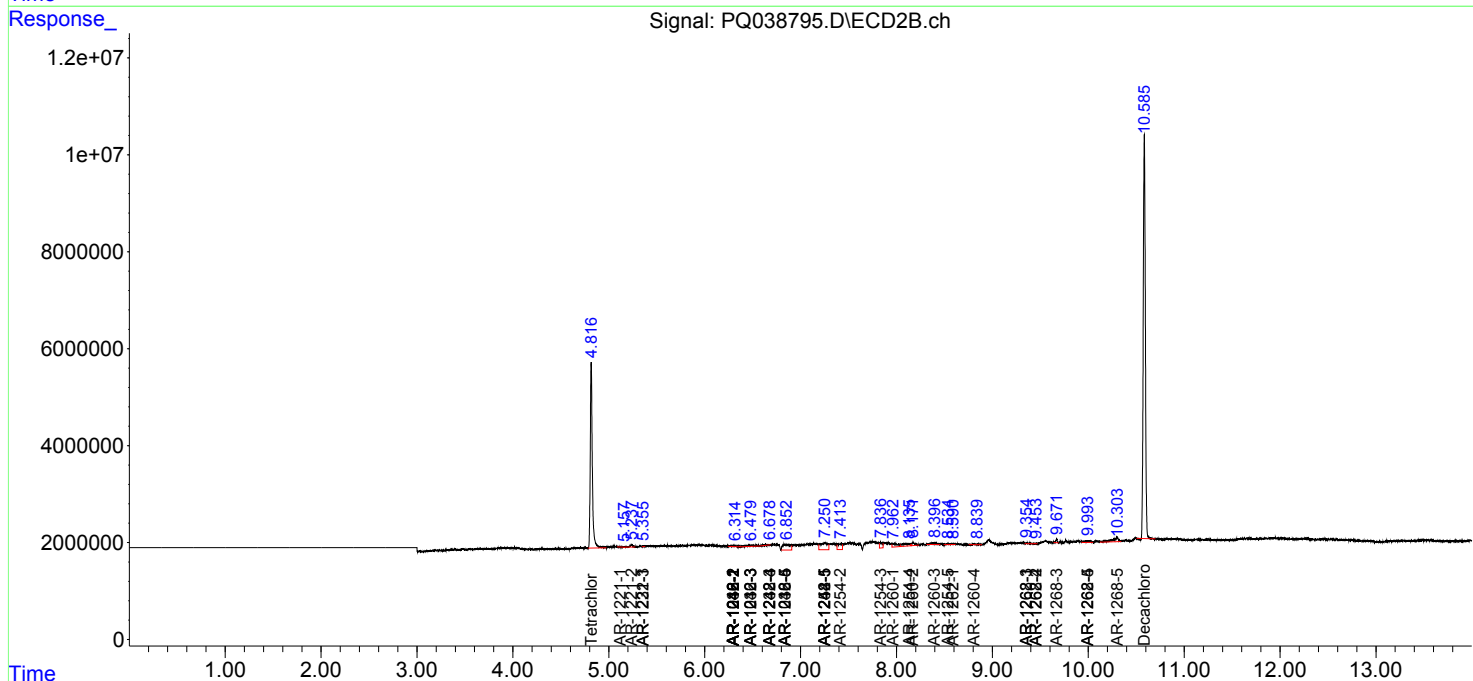
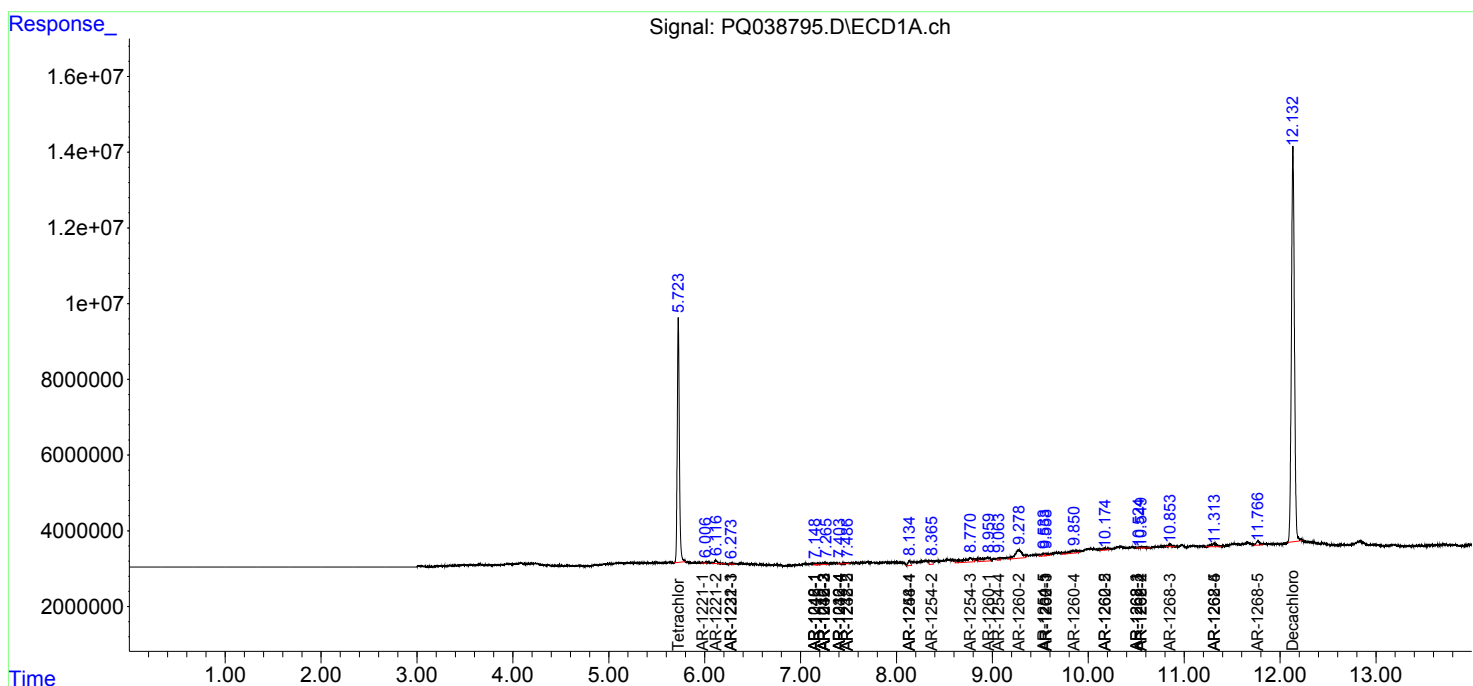
(f)=RT Delta > 1/2 Window (#)=Amounts differ by > 25% (m)=manual int.

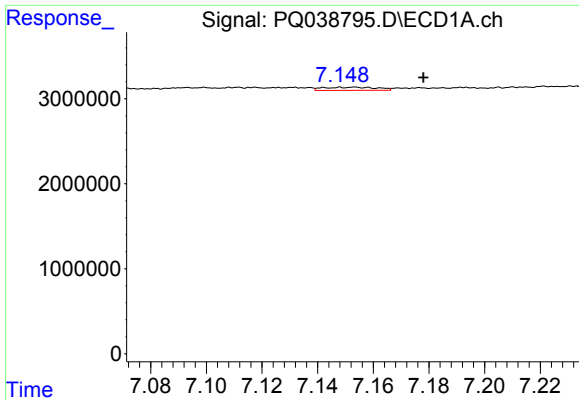
Data Path : Z:\pestpcbsrv\HPCHEM1\ECD\_Q\Data\PQ040519\  
 Data File : PQ038795.D  
 Signal(s) : Signal #1: ECD1A.ch Signal #2: ECD2B.ch  
 Acq On : 06 Apr 2019 00:56  
 Operator : AJ\SJ  
 Sample : AIBLK11  
 Misc :  
 ALS Vial : 2 Sample Multiplier: 1

Instrument :  
 ECD\_Q  
 ClientSampled :  
 AIBLK11

Integration File signal 1: autoint1.e  
 Integration File signal 2: autoint2.e  
 Quant Time: Apr 06 01:23:19 2019  
 Quant Method : Z:\pestpcbsrv\HPCHEM1\ECD\_Q\Method\PQ040419CLP.M  
 Quant Title : GC EXTRACTABLES  
 QLast Update : Fri Apr 05 05:12:40 2019  
 Response via : Initial Calibration  
 Integrator: ChemStation

Volume Inj. : 1 µl  
 Signal #1 Phase : ZB MR1 Signal #2 Phase: ZB MR2  
 Signal #1 Info : 30Mx0.32mmx 0.5µm Signal #2 Info : 30M x 0.32mm x 0.25µm

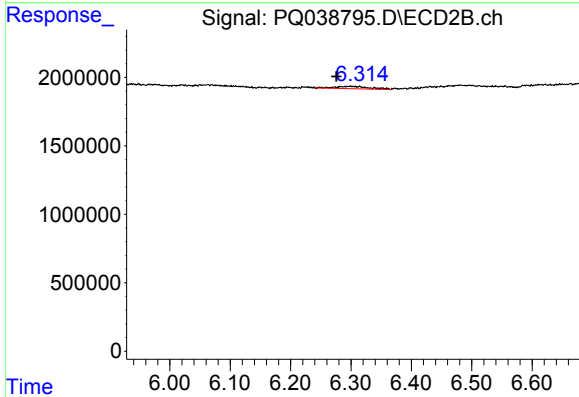




#3 AR-1016-1

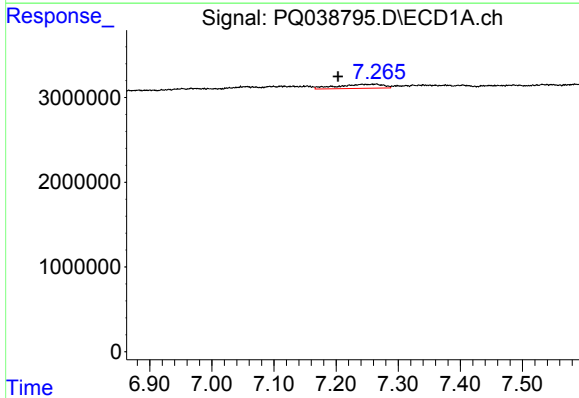
R.T.: 7.153 min  
 Delta R.T.: -0.025 min  
 Response: 494122  
 Conc: 1.83 ng/ml

Instrument :  
 ECD\_Q  
 ClientSampled :  
 AIBLK11



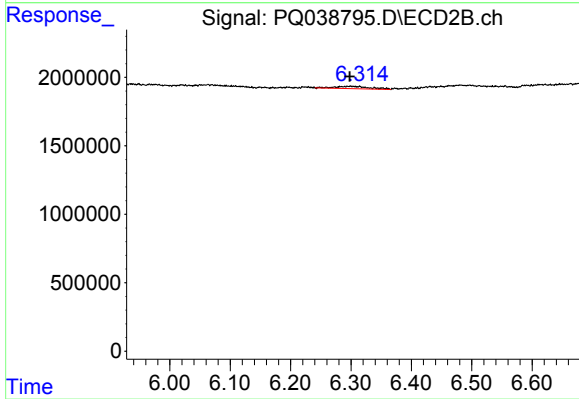
#3 AR-1016-1

R.T.: 6.299 min  
 Delta R.T.: 0.023 min  
 Response: 656315  
 Conc: 4.40 ng/ml



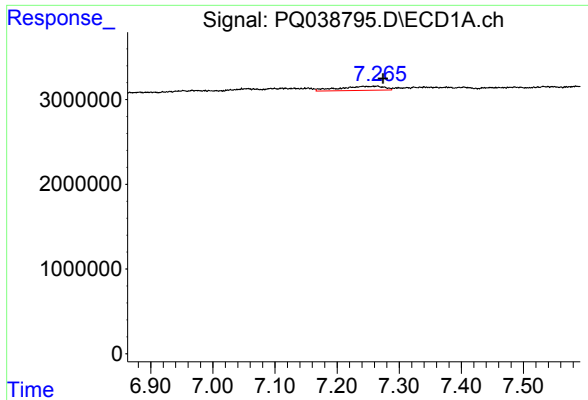
#4 AR-1016-2

R.T.: 7.242 min  
 Delta R.T.: 0.039 min  
 Response: 2461242  
 Conc: 6.08 ng/ml



#4 AR-1016-2

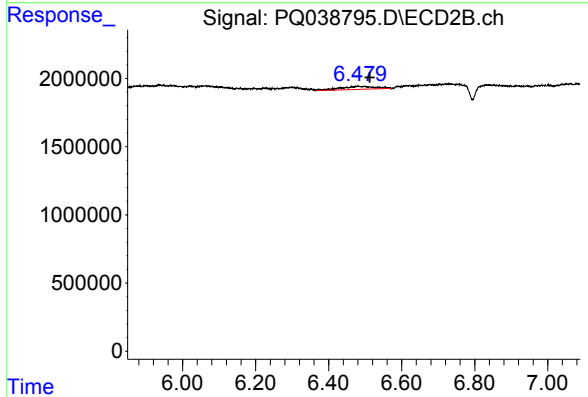
R.T.: 6.299 min  
 Delta R.T.: 0.001 min  
 Response: 656315  
 Conc: 3.03 ng/ml



#5 AR-1016-3

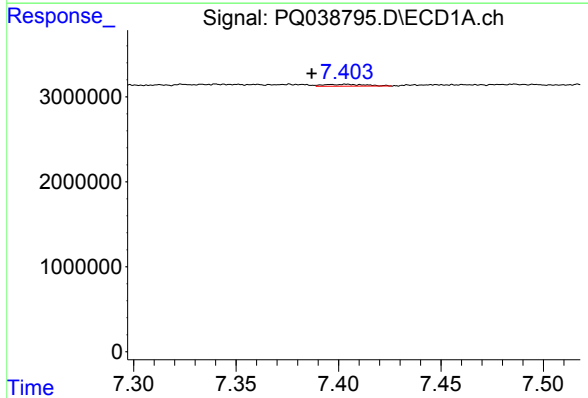
R.T.: 7.242 min  
 Delta R.T.: -0.032 min  
 Response: 2461242  
 Conc: 9.62 ng/ml

Instrument :  
 ECD\_Q  
 ClientSampled :  
 AIBLK11



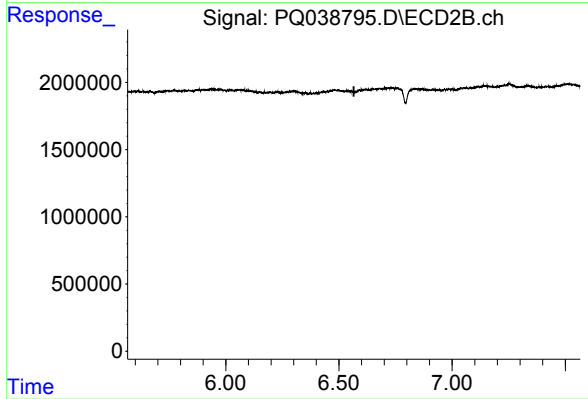
#5 AR-1016-3

R.T.: 6.481 min  
 Delta R.T.: -0.031 min  
 Response: 1455733  
 Conc: 12.91 ng/ml



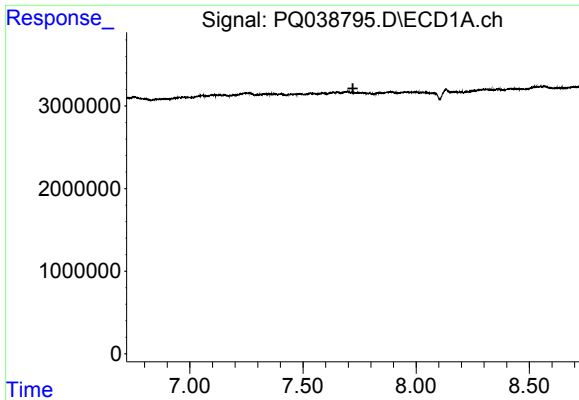
#6 AR-1016-4

R.T.: 7.404 min  
 Delta R.T.: 0.017 min  
 Response: 312450  
 Conc: 1.50 ng/ml



#6 AR-1016-4

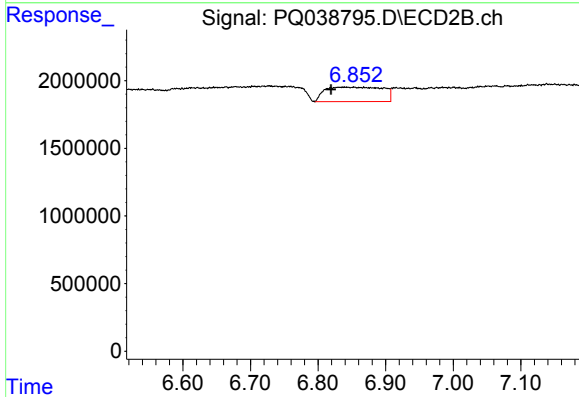
R.T.: 0.000 min  
 Exp R.T. : 6.566 min  
 Response: 0  
 Conc: N.D.



#7 AR-1016-5

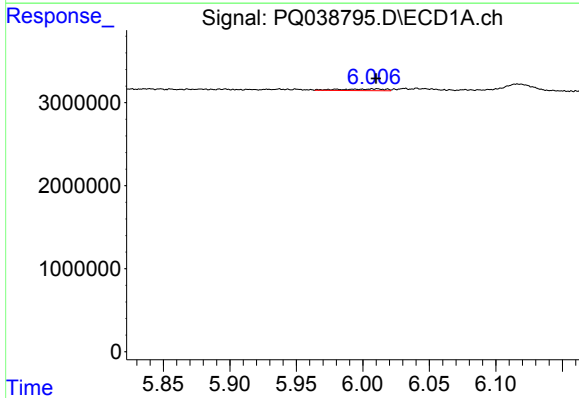
R.T.: 0.000 min  
 Exp R.T.: 7.721 min  
 Response: 0  
 Conc: N.D.

Instrument :  
 ECD\_Q  
 ClientSampled :  
 AIBLK11



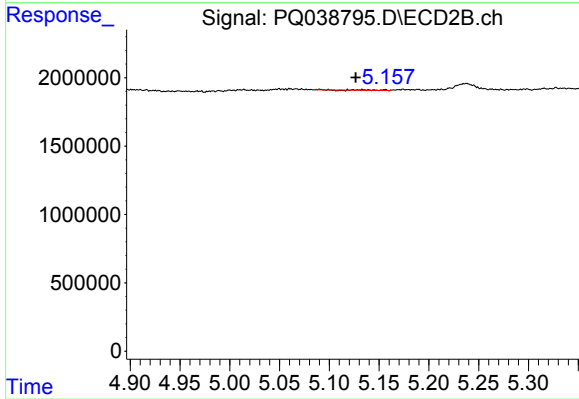
#7 AR-1016-5

R.T.: 6.840 min  
 Delta R.T.: 0.020 min  
 Response: 6347577  
 Conc: 49.16 ng/ml



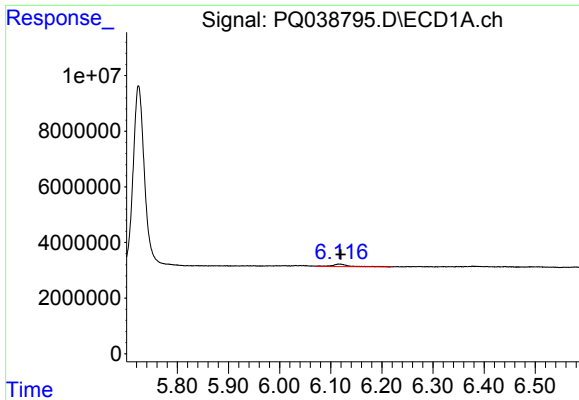
#8 AR-1221-1

R.T.: 5.980 min  
 Delta R.T.: -0.030 min  
 Response: 470368  
 Conc: 8.11 ng/ml



#8 AR-1221-1

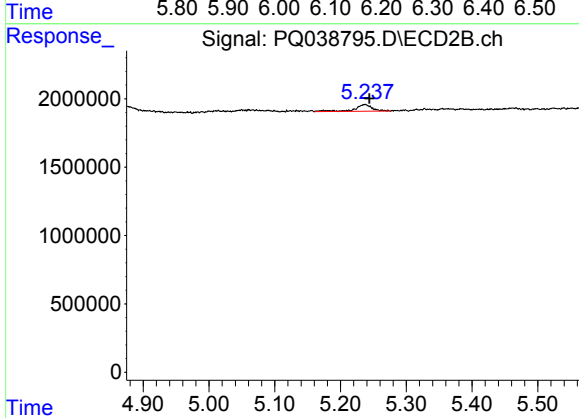
R.T.: 5.124 min  
 Delta R.T.: -0.002 min  
 Response: 43187  
 Conc: 1.49 ng/ml



#9 AR-1221-2

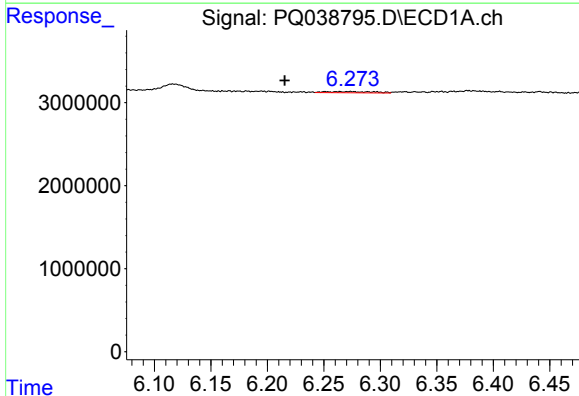
R.T.: 6.117 min  
 Delta R.T.: -0.003 min  
 Response: 2080309  
 Conc: 51.79 ng/ml

Instrument :  
 ECD\_Q  
 ClientSampled :  
 AIBLK11



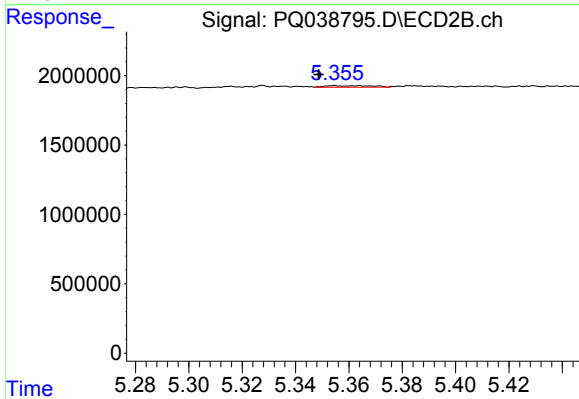
#9 AR-1221-2

R.T.: 5.237 min  
 Delta R.T.: -0.007 min  
 Response: 900591  
 Conc: 43.23 ng/ml



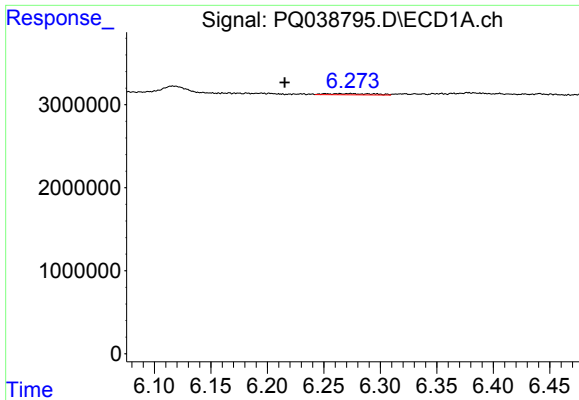
#10 AR-1221-3

R.T.: 6.274 min  
 Delta R.T.: 0.058 min  
 Response: 410853  
 Conc: 2.91 ng/ml



#10 AR-1221-3

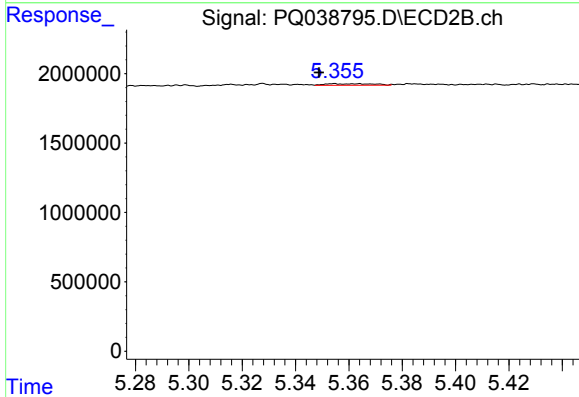
R.T.: 5.364 min  
 Delta R.T.: 0.015 min  
 Response: 135761  
 Conc: 1.85 ng/ml



#11 AR-1232-1

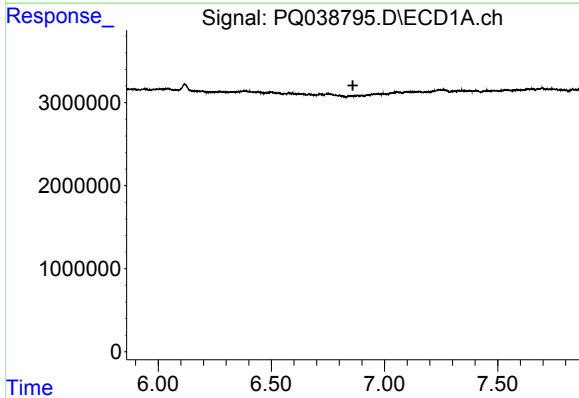
R.T.: 6.274 min  
 Delta R.T.: 0.058 min  
 Response: 410853  
 Conc: 4.24 ng/ml

Instrument :  
 ECD\_Q  
 ClientSampled :  
 AIBLK11



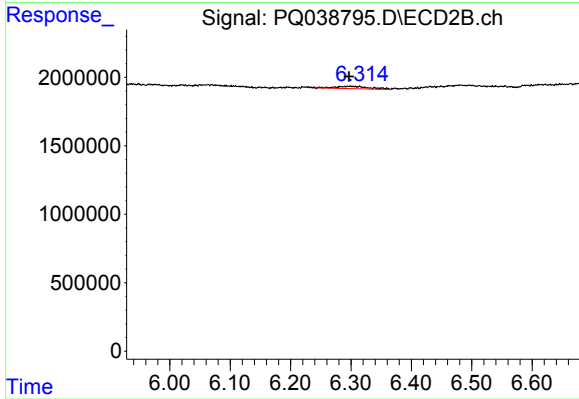
#11 AR-1232-1

R.T.: 5.364 min  
 Delta R.T.: 0.015 min  
 Response: 135761  
 Conc: 2.63 ng/ml



#12 AR-1232-2

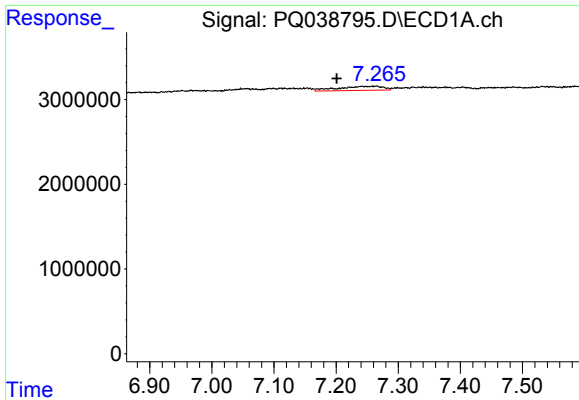
R.T.: 0.000 min  
 Exp R.T. : 6.860 min  
 Response: 0  
 Conc: N.D.



#12 AR-1232-2

R.T.: 6.299 min  
 Delta R.T.: 0.002 min  
 Response: 656315  
 Conc: 11.28 ng/ml

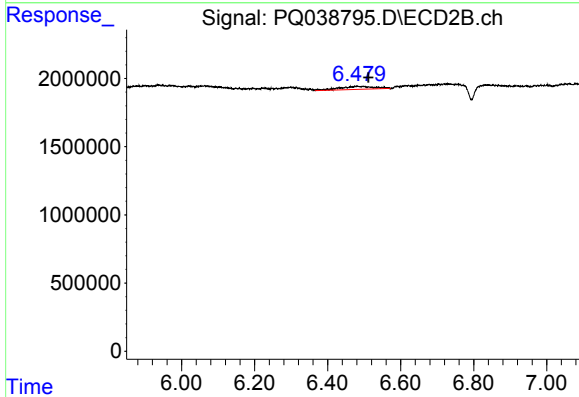




#13 AR-1232-3

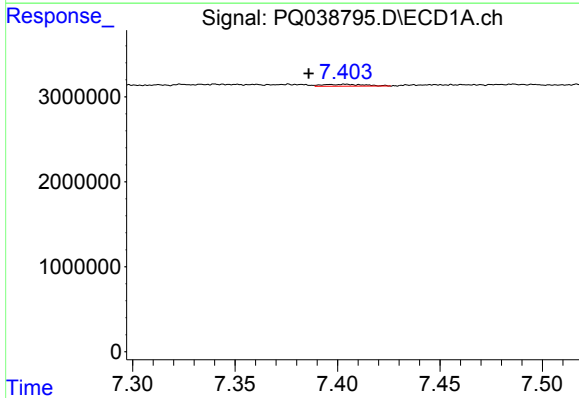
R.T.: 7.242 min  
 Delta R.T.: 0.041 min  
 Response: 2461242  
 Conc: 23.09 ng/ml

**Instrument :**  
 ECD\_Q  
**ClientSampleId :**  
 AIBLK11



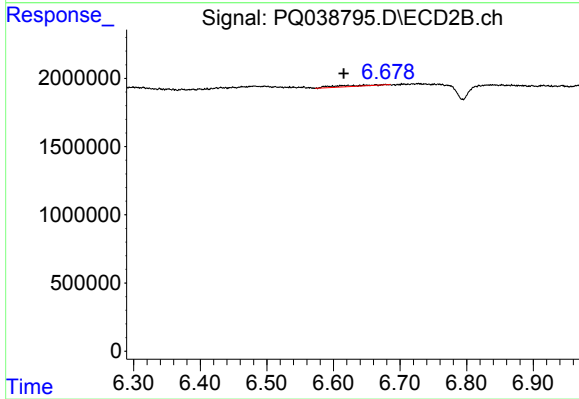
#13 AR-1232-3

R.T.: 6.481 min  
 Delta R.T.: -0.031 min  
 Response: 1455733  
 Conc: 47.90 ng/ml



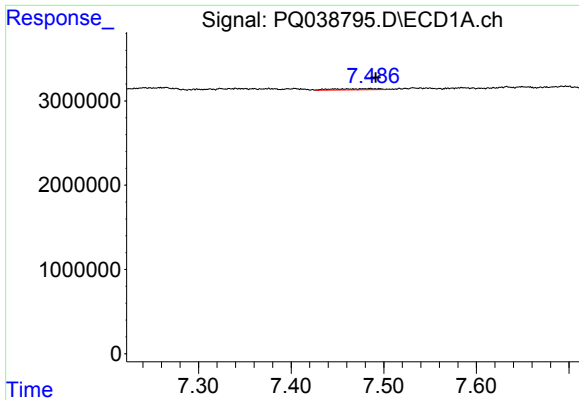
#14 AR-1232-4

R.T.: 7.404 min  
 Delta R.T.: 0.018 min  
 Response: 312450  
 Conc: 5.65 ng/ml



#14 AR-1232-4

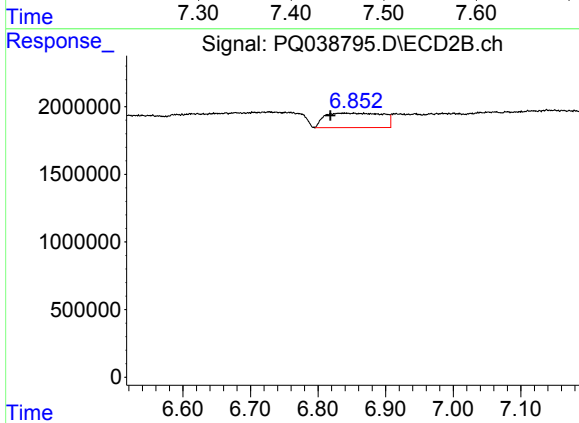
R.T.: 6.678 min  
 Delta R.T.: 0.063 min  
 Response: 318874  
 Conc: 11.41 ng/ml



#15 AR-1232-5

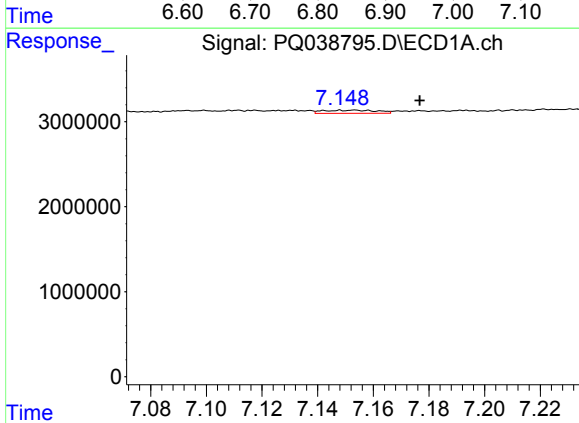
R.T.: 7.486 min  
 Delta R.T.: -0.006 min  
 Response: 459314  
 Conc: 11.78 ng/ml

Instrument :  
 ECD\_Q  
 ClientSampled :  
 AIBLK11



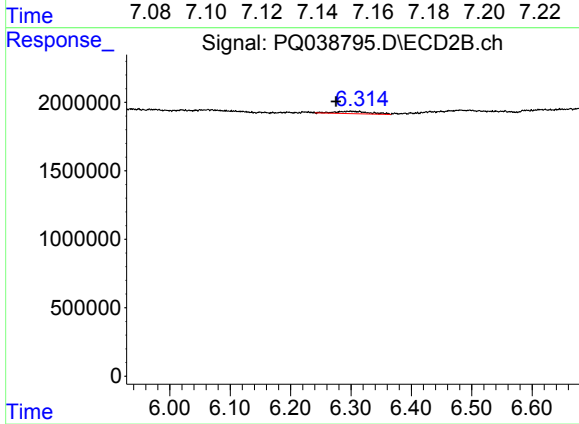
#15 AR-1232-5

R.T.: 6.840 min  
 Delta R.T.: 0.021 min  
 Response: 6347577  
 Conc: 193.49 ng/ml



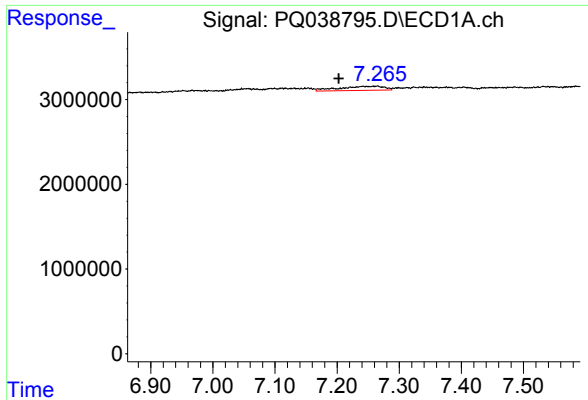
#16 AR-1242-1

R.T.: 7.153 min  
 Delta R.T.: -0.024 min  
 Response: 494122  
 Conc: 3.24 ng/ml



#16 AR-1242-1

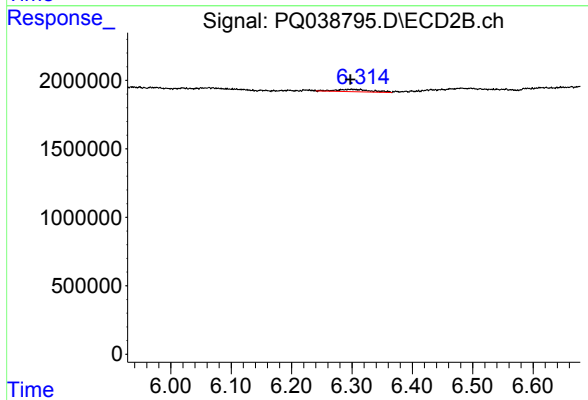
R.T.: 6.299 min  
 Delta R.T.: 0.024 min  
 Response: 656315  
 Conc: 7.57 ng/ml



#17 AR-1242-2

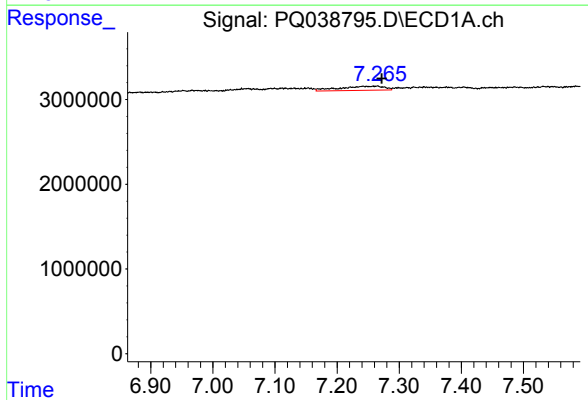
R.T.: 7.242 min  
 Delta R.T.: 0.040 min  
 Response: 2461242  
 Conc: 10.94 ng/ml

Instrument :  
 ECD\_Q  
 ClientSampled :  
 AIBLK11



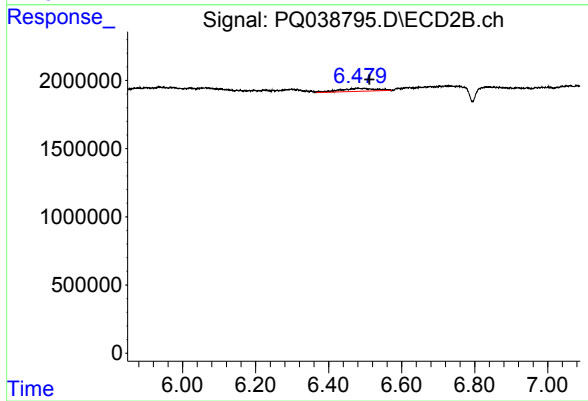
#17 AR-1242-2

R.T.: 6.299 min  
 Delta R.T.: 0.002 min  
 Response: 656315  
 Conc: 5.26 ng/ml



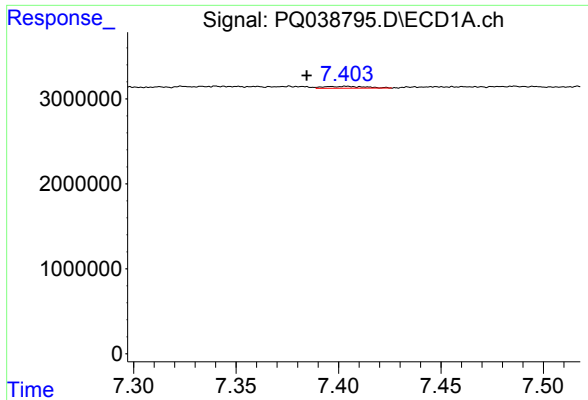
#18 AR-1242-3

R.T.: 7.242 min  
 Delta R.T.: -0.030 min  
 Response: 2461242  
 Conc: 17.37 ng/ml



#18 AR-1242-3

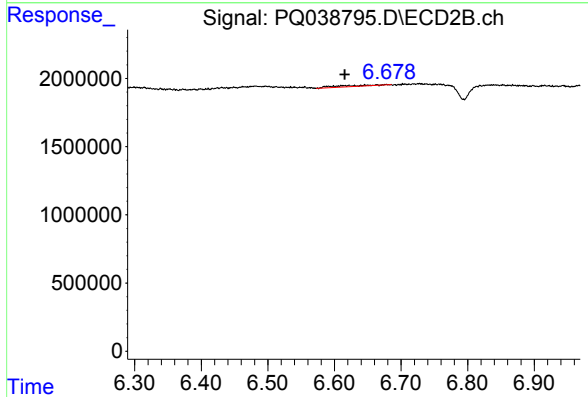
R.T.: 6.481 min  
 Delta R.T.: -0.031 min  
 Response: 1455733  
 Conc: 21.72 ng/ml



#19 AR-1242-4

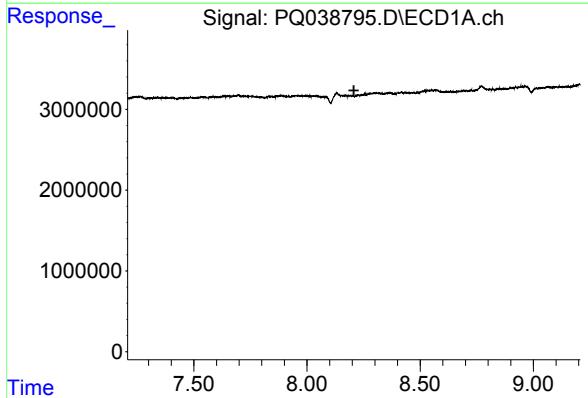
R.T.: 7.404 min  
 Delta R.T.: 0.019 min  
 Response: 312450  
 Conc: 2.70 ng/ml

Instrument :  
 ECD\_Q  
 ClientSampleId :  
 AIBLK11



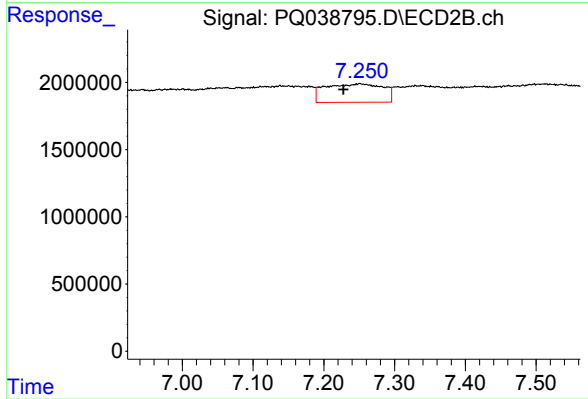
#19 AR-1242-4

R.T.: 6.678 min  
 Delta R.T.: 0.063 min  
 Response: 318874  
 Conc: 4.72 ng/ml



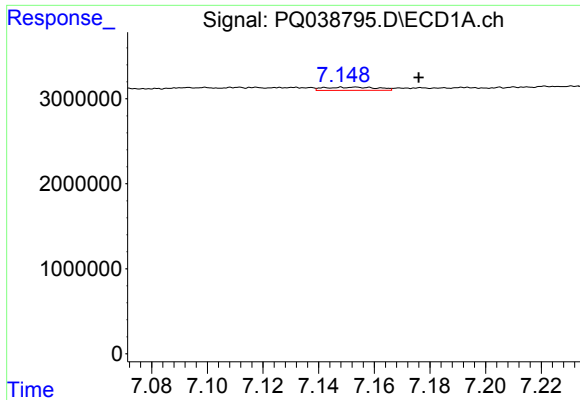
#20 AR-1242-5

R.T.: 0.000 min  
 Exp R.T. : 8.207 min  
 Response: 0  
 Conc: N.D.



#20 AR-1242-5

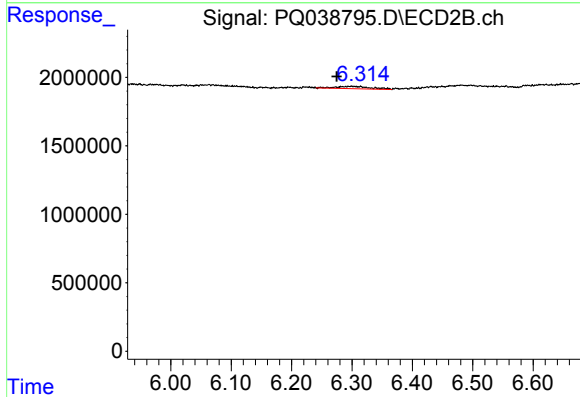
R.T.: 7.251 min  
 Delta R.T.: 0.023 min  
 Response: 7839542  
 Conc: 82.10 ng/ml



#21 AR-1248-1

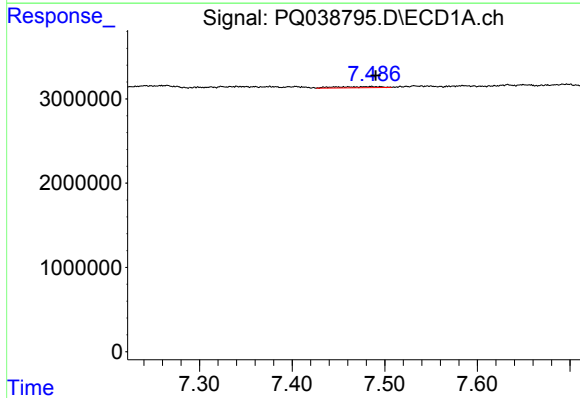
R.T.: 7.153 min  
 Delta R.T.: -0.023 min  
 Response: 494122  
 Conc: 4.69 ng/ml

Instrument :  
 ECD\_Q  
 ClientSampleId :  
 AIBLK11



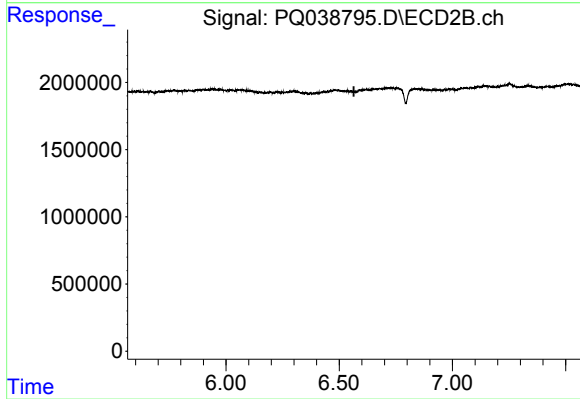
#21 AR-1248-1

R.T.: 6.299 min  
 Delta R.T.: 0.024 min  
 Response: 656315  
 Conc: 10.88 ng/ml



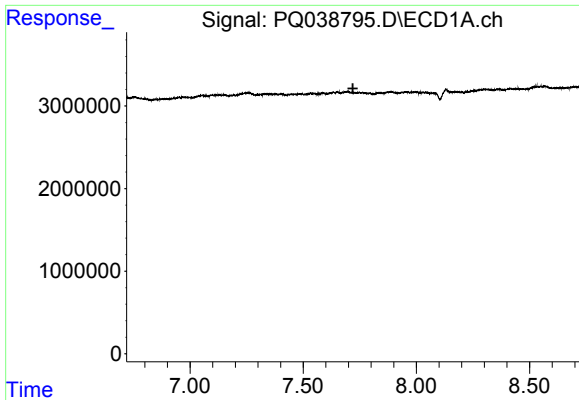
#22 AR-1248-2

R.T.: 7.486 min  
 Delta R.T.: -0.004 min  
 Response: 459314  
 Conc: 3.07 ng/ml



#22 AR-1248-2

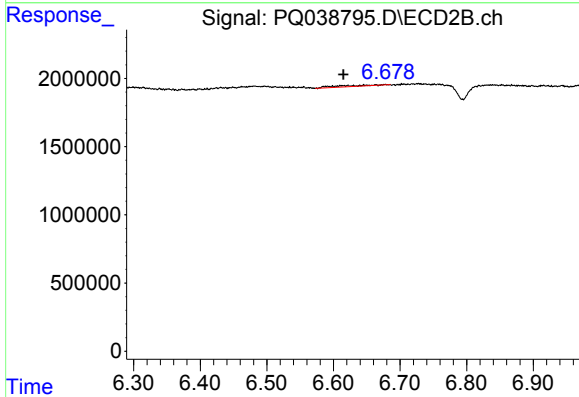
R.T.: 0.000 min  
 Exp R.T. : 6.565 min  
 Response: 0  
 Conc: N.D.



#23 AR-1248-3

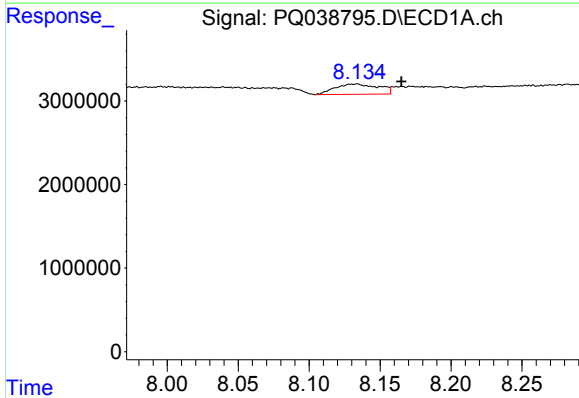
R.T.: 0.000 min  
 Exp R.T.: 7.719 min  
 Response: 0  
 Conc: N.D.

Instrument :  
 ECD\_Q  
 ClientSampled :  
 AIBLK11



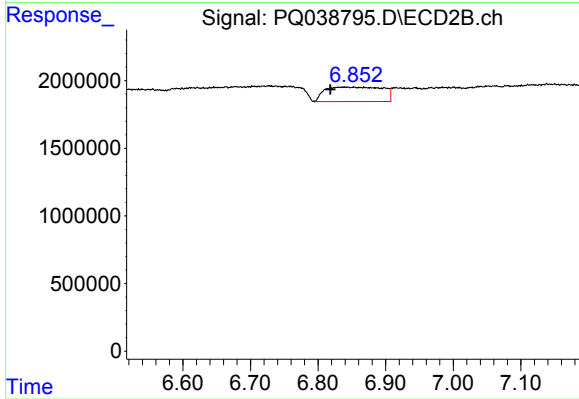
#23 AR-1248-3

R.T.: 6.678 min  
 Delta R.T.: 0.063 min  
 Response: 318874  
 Conc: 3.59 ng/ml



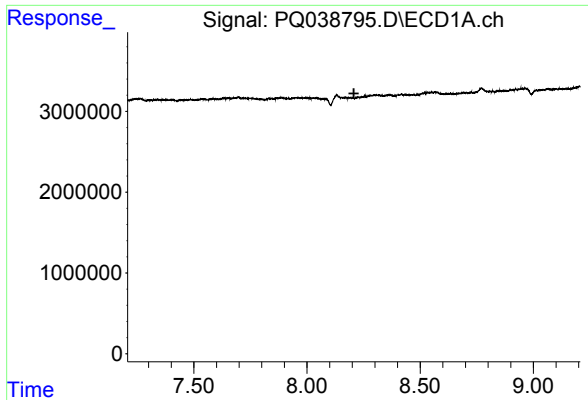
#24 AR-1248-4

R.T.: 8.132 min  
 Delta R.T.: -0.033 min  
 Response: 2618510  
 Conc: 12.89 ng/ml



#24 AR-1248-4

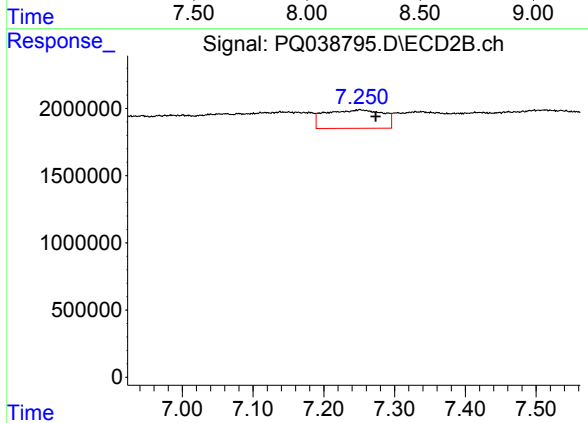
R.T.: 6.840 min  
 Delta R.T.: 0.022 min  
 Response: 6347577  
 Conc: 55.36 ng/ml



#25 AR-1248-5

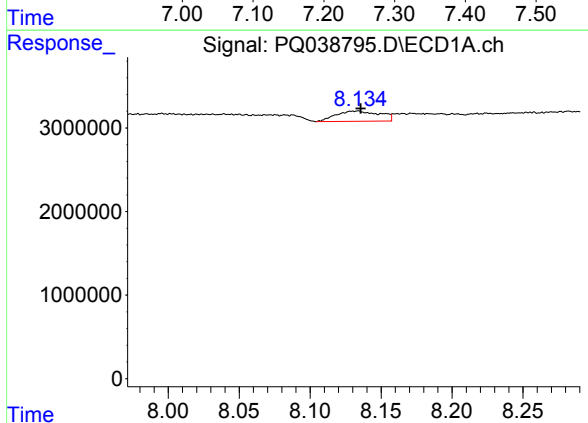
R.T.: 0.000 min  
 Exp R.T.: 8.207 min  
 Response: 0  
 Conc: N.D.

Instrument :  
 ECD\_Q  
 ClientSampleId :  
 AIBLK11



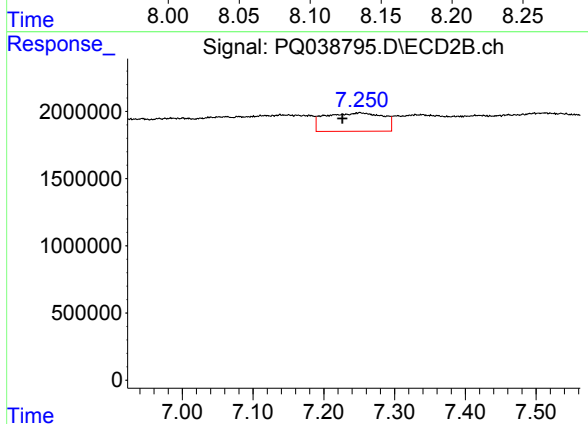
#25 AR-1248-5

R.T.: 7.251 min  
 Delta R.T.: -0.023 min  
 Response: 7839542  
 Conc: 68.09 ng/ml



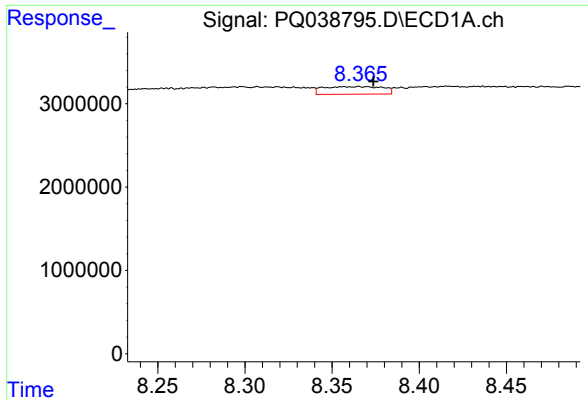
#26 AR-1254-1

R.T.: 8.132 min  
 Delta R.T.: -0.004 min  
 Response: 2618510  
 Conc: 12.14 ng/ml



#26 AR-1254-1

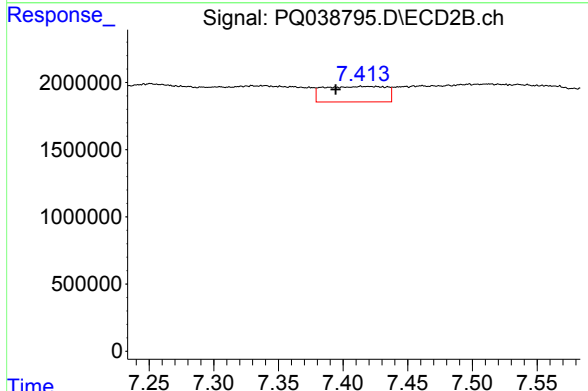
R.T.: 7.251 min  
 Delta R.T.: 0.024 min  
 Response: 7839542  
 Conc: 42.66 ng/ml



#27 AR-1254-2

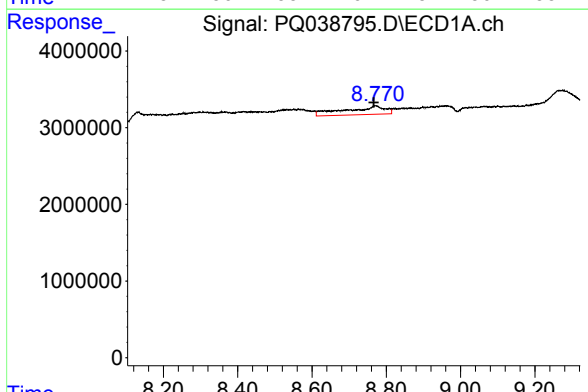
R.T.: 8.366 min  
 Delta R.T.: -0.008 min  
 Response: 2166372  
 Conc: 6.39 ng/ml

**Instrument :**  
 ECD\_Q  
**ClientSampled :**  
 AIBLK11



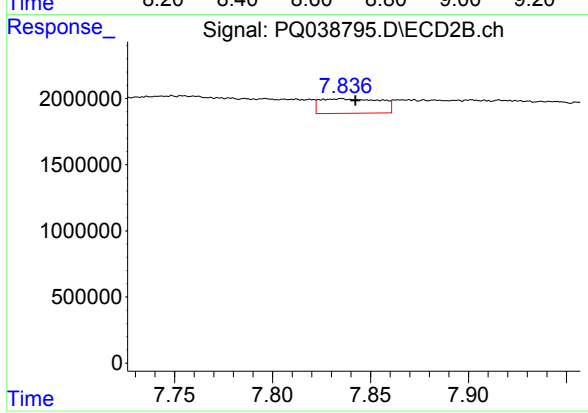
#27 AR-1254-2

R.T.: 7.417 min  
 Delta R.T.: 0.023 min  
 Response: 3880963  
 Conc: 23.98 ng/ml



#28 AR-1254-3

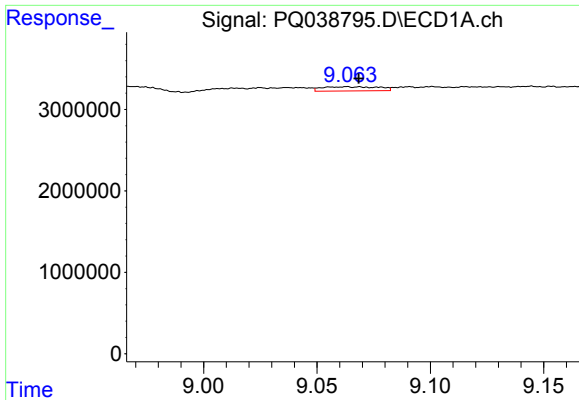
R.T.: 8.771 min  
 Delta R.T.: 0.005 min  
 Response: 8326766  
 Conc: 22.40 ng/ml



#28 AR-1254-3

R.T.: 7.835 min  
 Delta R.T.: -0.008 min  
 Response: 2349287  
 Conc: 8.31 ng/ml

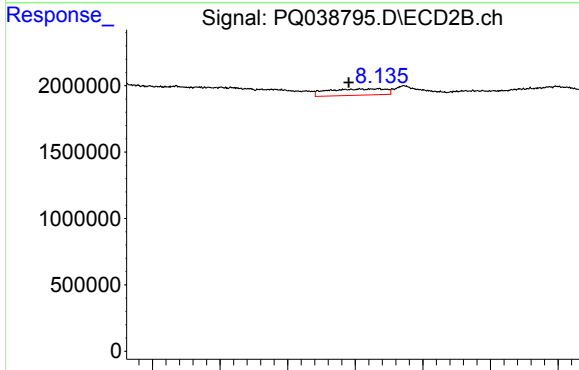




#29 AR-1254-4

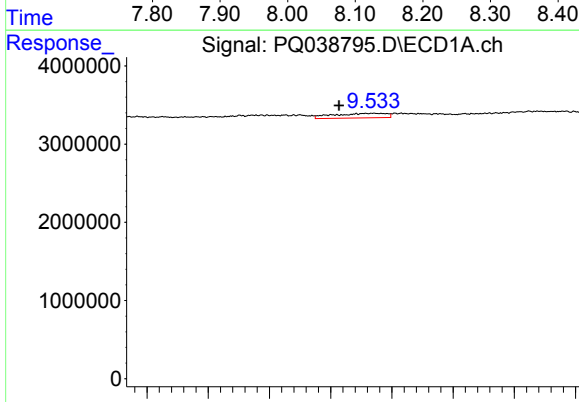
R.T.: 9.064 min  
 Delta R.T.: -0.005 min  
 Response: 912649  
 Conc: 3.58 ng/ml

Instrument :  
 ECD\_Q  
 ClientSampled :  
 AIBLK11



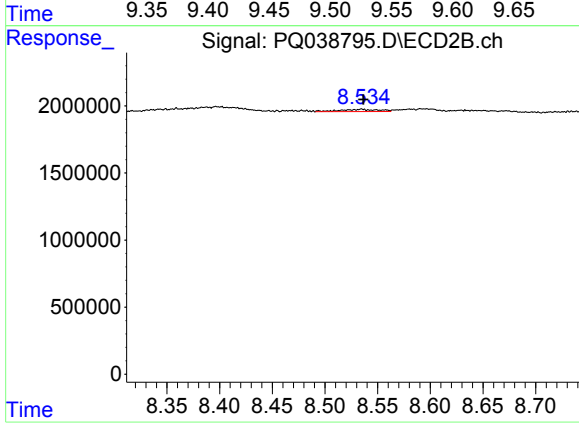
#29 AR-1254-4

R.T.: 8.135 min  
 Delta R.T.: 0.044 min  
 Response: 2842823  
 Conc: 17.13 ng/ml



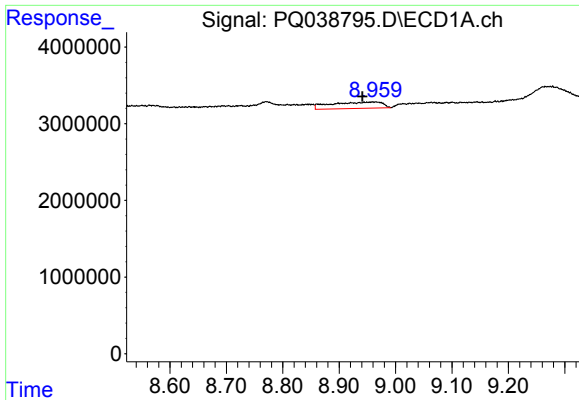
#30 AR-1254-5

R.T.: 9.535 min  
 Delta R.T.: 0.028 min  
 Response: 1743162  
 Conc: 5.85 ng/ml



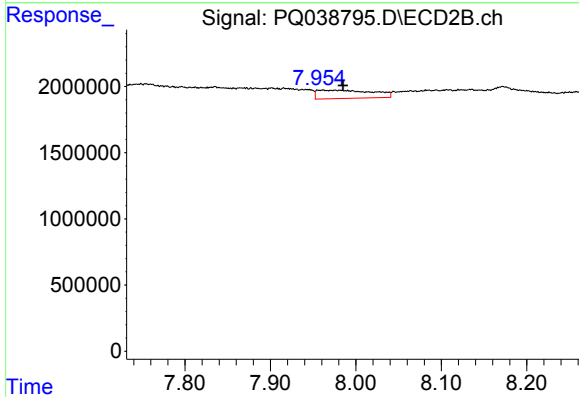
#30 AR-1254-5

R.T.: 8.534 min  
 Delta R.T.: -0.002 min  
 Response: 413048  
 Conc: 1.68 ng/ml

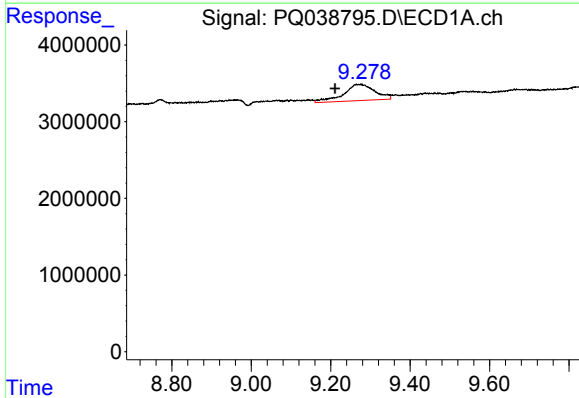


#31 AR-1260-1  
 R.T.: 8.964 min  
 Delta R.T.: 0.022 min  
 Response: 5182288  
 Conc: 10.83 ng/ml

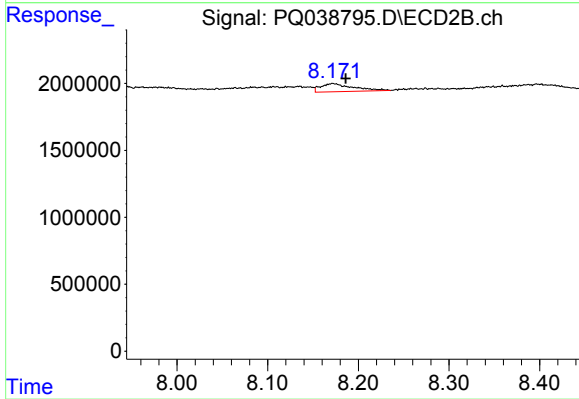
Instrument :  
 ECD\_Q  
 ClientSampleId :  
 AIBLK11



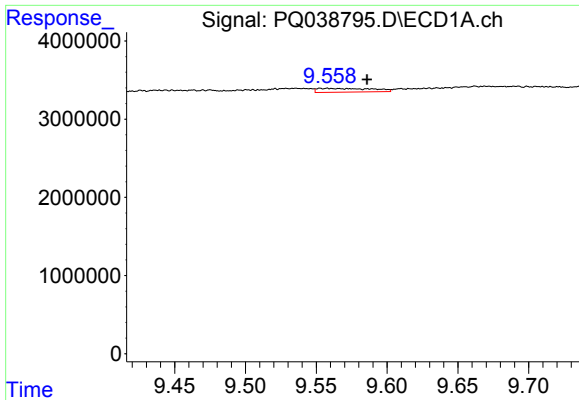
#31 AR-1260-1  
 R.T.: 7.960 min  
 Delta R.T.: -0.025 min  
 Response: 2777823  
 Conc: 9.17 ng/ml



#32 AR-1260-2  
 R.T.: 9.274 min  
 Delta R.T.: 0.063 min  
 Response: 11652825  
 Conc: 20.52 ng/ml



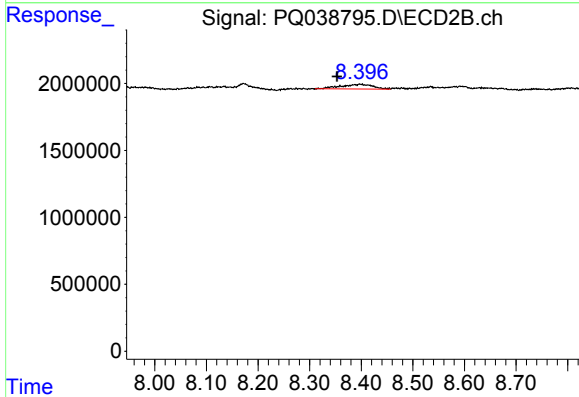
#32 AR-1260-2  
 R.T.: 8.172 min  
 Delta R.T.: -0.014 min  
 Response: 1499113  
 Conc: 4.05 ng/ml



#33 AR-1260-3

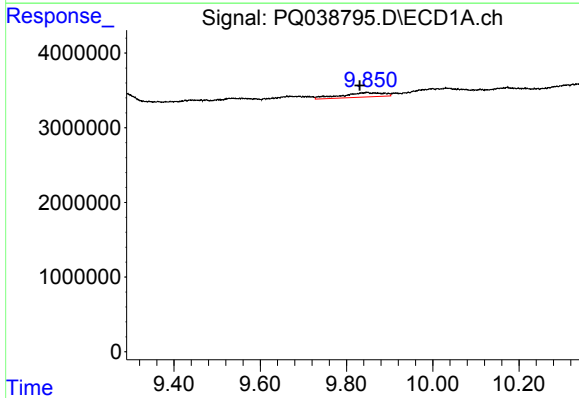
R.T.: 9.557 min  
 Delta R.T.: -0.029 min  
 Response: 1280550  
 Conc: 2.94 ng/ml

Instrument :  
 ECD\_Q  
 ClientSampled :  
 AIBLK11



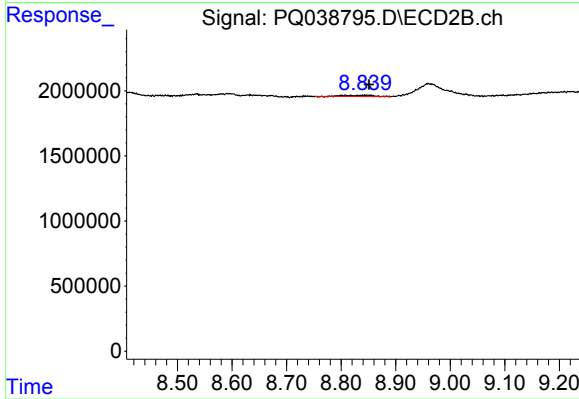
#33 AR-1260-3

R.T.: 8.398 min  
 Delta R.T.: 0.045 min  
 Response: 1495940  
 Conc: 4.27 ng/ml



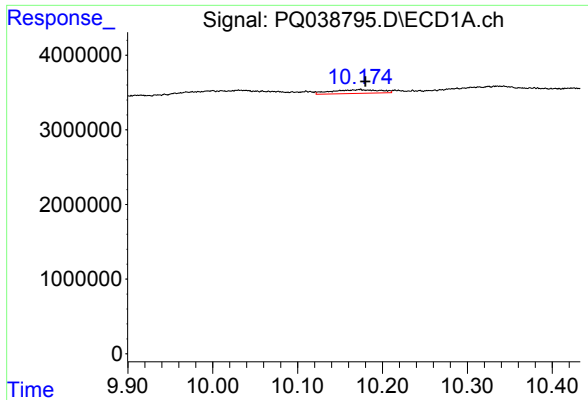
#34 AR-1260-4

R.T.: 9.848 min  
 Delta R.T.: 0.017 min  
 Response: 4041240  
 Conc: 7.87 ng/ml



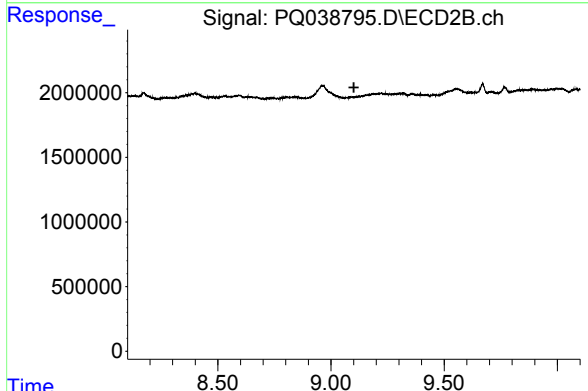
#34 AR-1260-4

R.T.: 8.807 min  
 Delta R.T.: -0.044 min  
 Response: 358411  
 Conc: 1.24 ng/ml

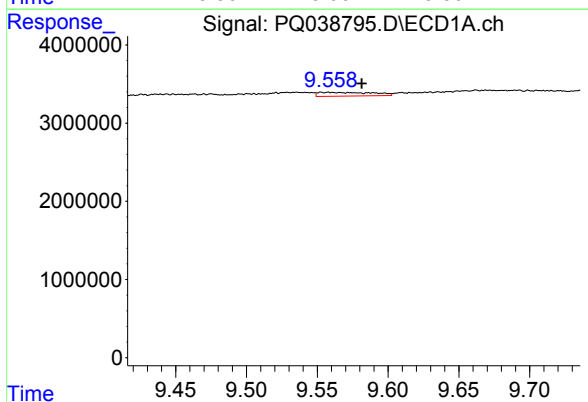


#35 AR-1260-5  
 R.T.: 10.173 min  
 Delta R.T.: -0.006 min  
 Response: 1939449  
 Conc: 1.87 ng/ml

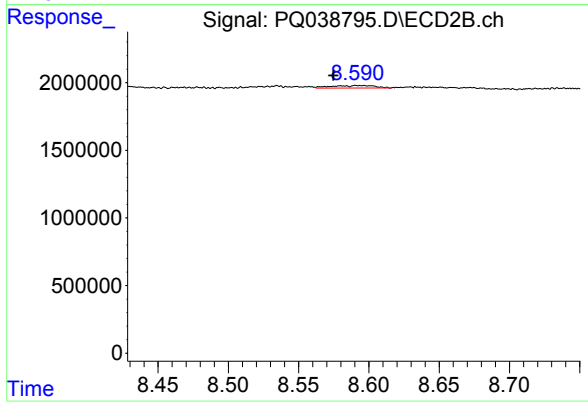
Instrument :  
 ECD\_Q  
 ClientSampled :  
 AIBLK11



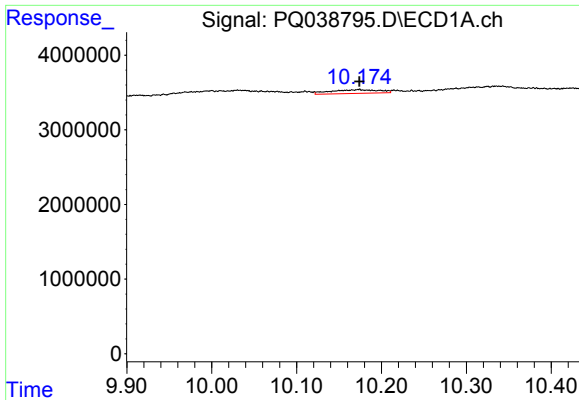
#35 AR-1260-5  
 R.T.: 0.000 min  
 Exp R.T. : 9.101 min  
 Response: 0  
 Conc: N.D.



#36 AR-1262-1  
 R.T.: 9.557 min  
 Delta R.T.: -0.025 min  
 Response: 1280550  
 Conc: 3.45 ng/ml



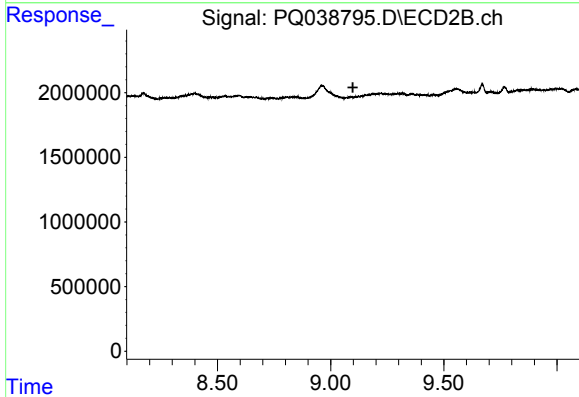
#36 AR-1262-1  
 R.T.: 8.594 min  
 Delta R.T.: 0.019 min  
 Response: 416865  
 Conc: 1.59 ng/ml



#37 AR-1262-2

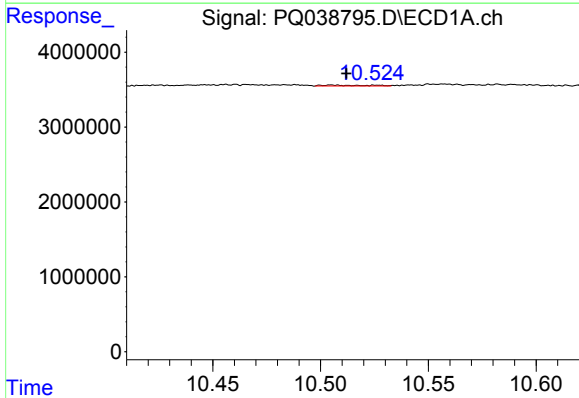
R.T.: 10.173 min  
 Delta R.T.: 0.000 min  
 Response: 1939449  
 Conc: 2.93 ng/ml

Instrument :  
 ECD\_Q  
 ClientSampleId :  
 AIBLK11



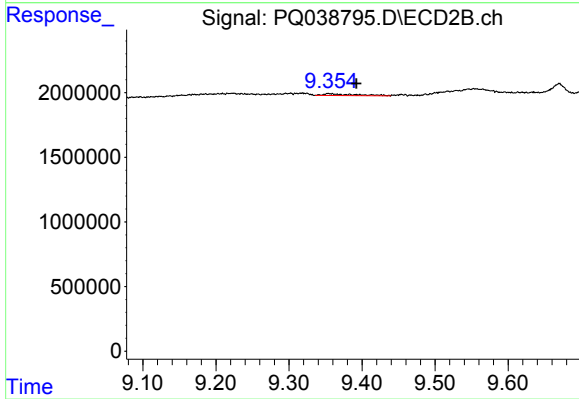
#37 AR-1262-2

R.T.: 0.000 min  
 Exp R.T. : 9.098 min  
 Response: 0  
 Conc: N.D.



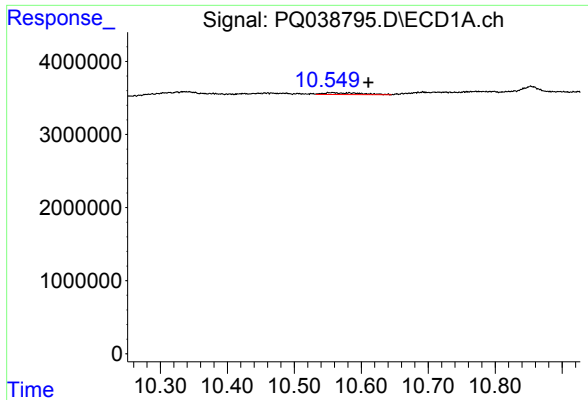
#38 AR-1262-3

R.T.: 10.505 min  
 Delta R.T.: -0.007 min  
 Response: 168381  
 Conc: 0.37 ng/ml



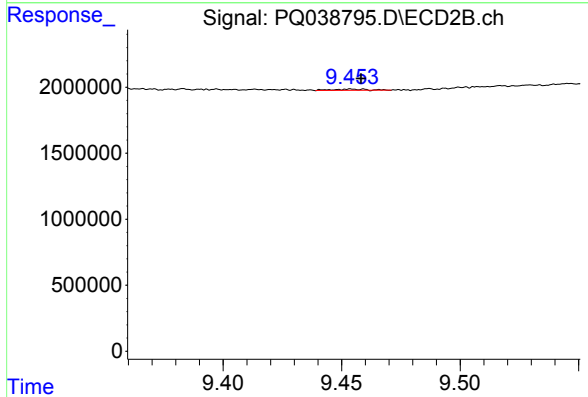
#38 AR-1262-3

R.T.: 9.355 min  
 Delta R.T.: -0.037 min  
 Response: 402424  
 Conc: 2.07 ng/ml

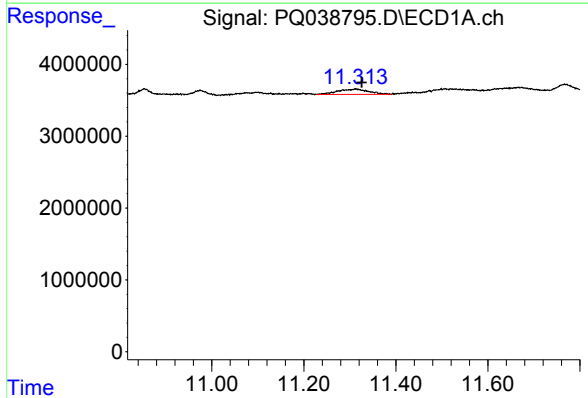


#39 AR-1262-4  
 R.T.: 10.556 min  
 Delta R.T.: -0.055 min  
 Response: 918494  
 Conc: 2.56 ng/ml

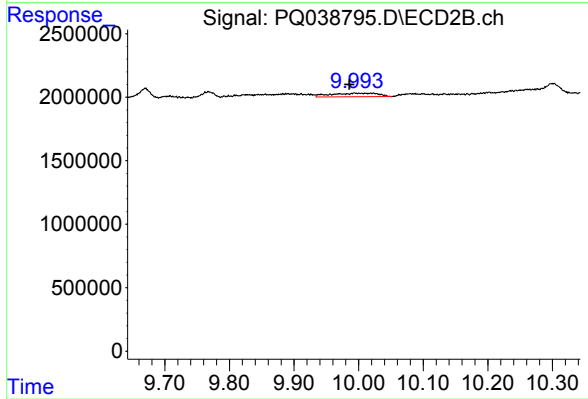
Instrument :  
 ECD\_Q  
 ClientSampled :  
 AIBLK11



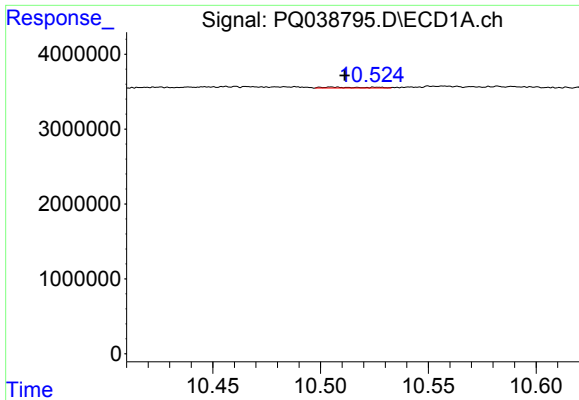
#39 AR-1262-4  
 R.T.: 9.455 min  
 Delta R.T.: -0.004 min  
 Response: 93072  
 Conc: 0.25 ng/ml



#40 AR-1262-5  
 R.T.: 11.313 min  
 Delta R.T.: -0.013 min  
 Response: 3458795  
 Conc: 13.90 ng/ml

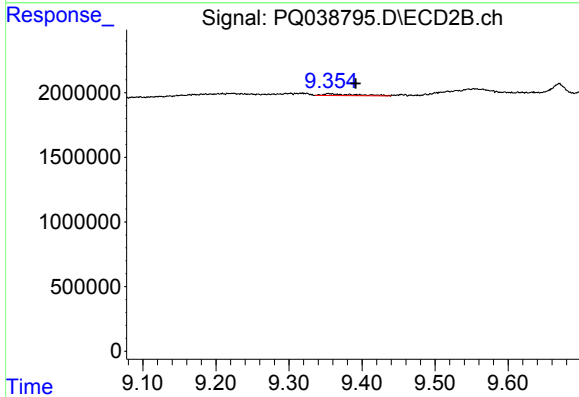


#40 AR-1262-5  
 R.T.: 9.995 min  
 Delta R.T.: 0.009 min  
 Response: 1453186  
 Conc: 9.62 ng/ml

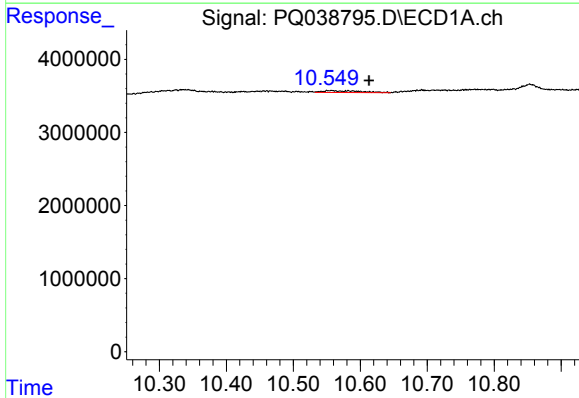


#41 AR-1268-1  
 R.T.: 10.505 min  
 Delta R.T.: -0.006 min  
 Response: 168381  
 Conc: 0.11 ng/ml

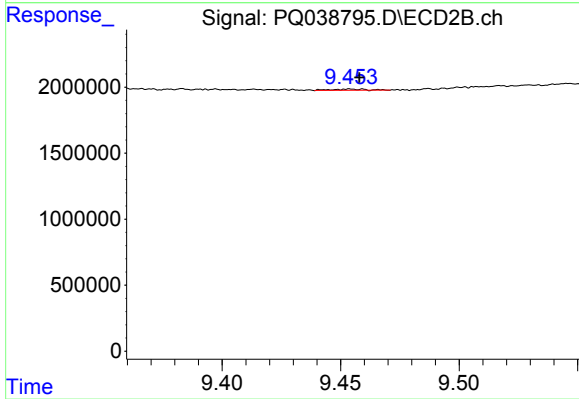
Instrument :  
 ECD\_Q  
 ClientSampled :  
 AIBLK11



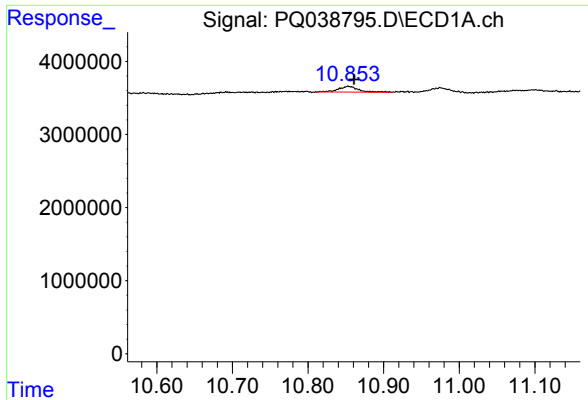
#41 AR-1268-1  
 R.T.: 9.355 min  
 Delta R.T.: -0.036 min  
 Response: 402424  
 Conc: 0.40 ng/ml



#42 AR-1268-2  
 R.T.: 10.556 min  
 Delta R.T.: -0.057 min  
 Response: 918494  
 Conc: 0.66 ng/ml

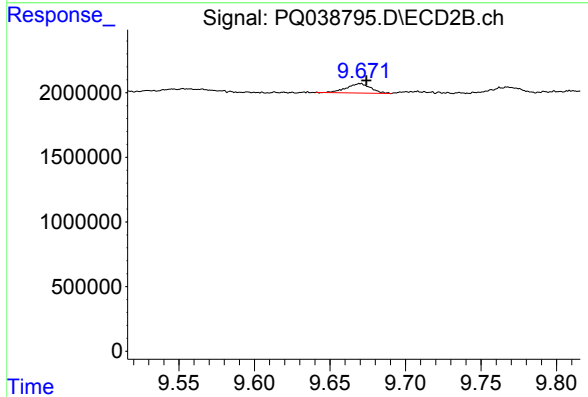


#42 AR-1268-2  
 R.T.: 9.455 min  
 Delta R.T.: -0.003 min  
 Response: 93072  
 Conc: 0.10 ng/ml

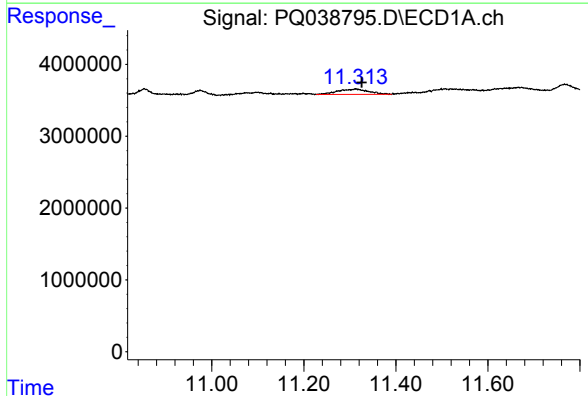


#43 AR-1268-3  
 R.T.: 10.854 min  
 Delta R.T.: -0.007 min  
 Response: 1451269  
 Conc: 1.18 ng/ml

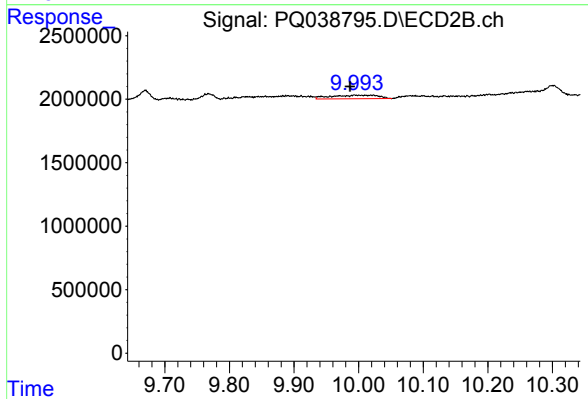
Instrument :  
 ECD\_Q  
 ClientSampled :  
 AIBLK11



#43 AR-1268-3  
 R.T.: 9.670 min  
 Delta R.T.: -0.005 min  
 Response: 811123  
 Conc: 1.03 ng/ml

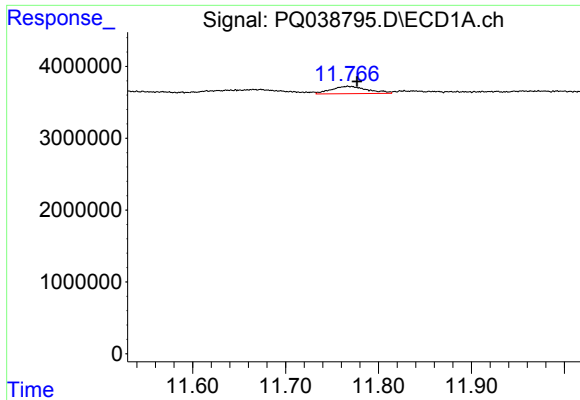


#44 AR-1268-4  
 R.T.: 11.313 min  
 Delta R.T.: -0.013 min  
 Response: 3458795  
 Conc: 6.90 ng/ml



#44 AR-1268-4  
 R.T.: 9.995 min  
 Delta R.T.: 0.008 min  
 Response: 1453186  
 Conc: 4.67 ng/ml

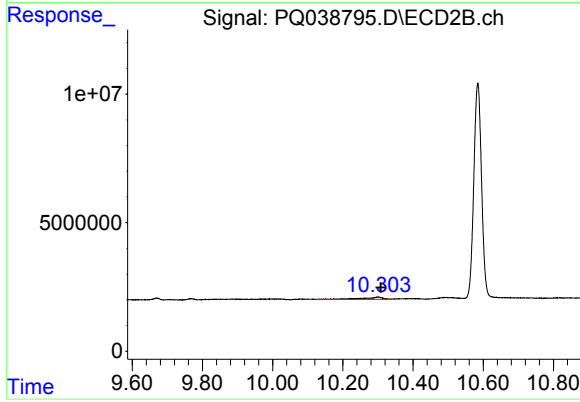




#45 AR-1268-5

R.T.: 11.768 min  
Delta R.T.: -0.009 min  
Response: 2749719  
Conc: 0.65 ng/ml

Instrument :  
ECD\_Q  
ClientSampled :  
AIBLK11



#45 AR-1268-5

R.T.: 10.300 min  
Delta R.T.: -0.007 min  
Response: 3985981  
Conc: 1.60 ng/ml