

Data Path : Z:\pestpcbsrv\HPCHEM1\ECD\_Q\Data\PQ040519\  
 Data File : PQ038799.D  
 Signal(s) : Signal #1: ECD1A.ch Signal #2: ECD2B.ch  
 Acq On : 06 Apr 2019 02:41  
 Operator : AJ\SJ  
 Sample : AR1254CCC400  
 Misc :  
 ALS Vial : 144 Sample Multiplier: 1

Instrument :  
 ECD\_Q  
 ClientSampleId :  
 AR1254309

Integration File signal 1: autoint1.e  
 Integration File signal 2: autoint2.e  
 Quant Time: Apr 06 03:02:49 2019  
 Quant Method : Z:\pestpcbsrv\HPCHEM1\ECD\_Q\Method\PQ040419CLP.M  
 Quant Title : GC EXTRACTABLES  
 QLast Update : Fri Apr 05 05:12:40 2019  
 Response via : Initial Calibration  
 Integrator: ChemStation

Volume Inj. : 1 µl  
 Signal #1 Phase : ZB MR1 Signal #2 Phase: ZB MR2  
 Signal #1 Info : 30Mx0.32mmx 0.5µm Signal #2 Info : 30M x 0.32mm x 0.25µm

Compound	RT#1	RT#2	Resp#1	Resp#2	ng/ml	ng/ml
System Monitoring Compounds						
1) SA Tetrachlo...	5.730	4.814	99220587	53874997	20.709	23.649
2) SA Decachlor...	12.142	10.587	231.8E6	131.0E6	35.052	38.505
Target Compounds						
3) L1 AR-1016-1	7.175	6.270	2300340	1208619	8.507	8.107
4) L1 AR-1016-2	7.204	6.292	2620659	904495	6.477	4.170 #
5) L1 AR-1016-3	7.272	6.507	1061156	570374	4.146	5.058
6) L1 AR-1016-4	7.384	6.561	1257769	28272327	6.019	327.094 #
7) L1 AR-1016-5	7.719	6.814	27487995	16966578	127.681	131.402
8) L2 AR-1221-1	0.000	5.115	0	316057	N.D.	10.876 #
9) L2 AR-1221-2	6.124	5.234	2891682	710352	71.994	34.098 #
10) L2 AR-1221-3	6.214	5.345	2271741	780361	16.091	10.628 #
11) L3 AR-1232-1	6.214	5.345	2271741	780361	23.427	15.141 #
12) L3 AR-1232-2	6.859	6.292	1406831	904495	25.098	15.543 #
13) L3 AR-1232-3	7.204	6.507	2620659	570374	24.587	18.769
14) L3 AR-1232-4	7.384	6.609	1257769	8274148	22.727	296.171 #
15) L3 AR-1232-5	7.491	6.814	47046463	16966578	1206.276	517.177 #
16) L4 AR-1242-1	7.175	6.270	2300340	1208619	15.075	13.948
17) L4 AR-1242-2	7.204	6.292	2620659	904495	11.652	7.252 #
18) L4 AR-1242-3	7.272	6.507	1061156	570374	7.490	8.510
19) L4 AR-1242-4	7.384	6.609	1257769	8274148	10.871	122.490 #
20) L4 AR-1242-5	8.210	7.223	26881495	76827434	197.966	804.564 #
21) L5 AR-1248-1	7.175	6.270	2300340	1208619	21.823	20.043
22) L5 AR-1248-2	7.491	6.561	47046463	28272327	314.227	334.121
23) L5 AR-1248-3	7.719	6.609	27487995	8274148	150.388	93.167 #
24) L5 AR-1248-4	8.165	6.814	38690494	16966578	190.401	147.982
25) L5 AR-1248-5	8.210	7.269	26881495	8518503	132.461	73.990 #
26) L6 AR-1254-1	8.135	7.223	85954340	76827434	398.350	418.105
27) L6 AR-1254-2	8.373	7.390	133.1E6	67937134	392.960	419.725
28) L6 AR-1254-3	8.766	7.839	142.2E6	114.4E6	382.622	404.880
29) L6 AR-1254-4	9.067	8.086	97274557	65877581	381.445	397.023
30) L6 AR-1254-5	9.506	8.533	135.9E6	98073460	456.055	398.148
31) L7 AR-1260-1	8.939	7.979	58901537	52419187	123.137	173.039 #
32) L7 AR-1260-2	9.207	8.182	65332448	43405470	115.019	117.176
33) L7 AR-1260-3	9.570	8.347	20999611	43916375	48.200	125.275 #
34) L7 AR-1260-4	9.816	8.846	48847581	4417192	95.176	15.296 #
35) L7 AR-1260-5	10.175	9.094	22044882	9967498	21.233	14.054 #
36) L8 AR-1262-1	9.570	8.606	20999611	10244248	56.531	39.128 #
37) L8 AR-1262-2	10.175	9.094	22044882	9967498	33.346	20.858 #
38) L8 AR-1262-3	10.533	9.388	12154510	536798	26.898	2.765 #
39) L8 AR-1262-4	10.585	9.455	3107468	9855834	8.663	26.761 #
40) L8 AR-1262-5	11.322	9.983	2507007	960179	10.076	6.356 #
41) L9 AR-1268-1	10.533	9.388	12154510	536798	8.136	0.532 #

Data Path : Z:\pestpcbsrv\HPCHEM1\ECD\_Q\Data\PQ040519\  
 Data File : PQ038799.D  
 Signal(s) : Signal #1: ECD1A.ch Signal #2: ECD2B.ch  
 Acq On : 06 Apr 2019 02:41  
 Operator : AJ\SJ  
 Sample : AR1254CCC400  
 Misc :  
 ALS Vial : 144 Sample Multiplier: 1

Instrument :  
 ECD\_Q  
 ClientSampleId :  
 AR1254309

Integration File signal 1: autoint1.e  
 Integration File signal 2: autoint2.e  
 Quant Time: Apr 06 03:02:49 2019  
 Quant Method : Z:\pestpcbsrv\HPCHEM1\ECD\_Q\Method\PQ040419CLP.M  
 Quant Title : GC EXTRACTABLES  
 QLast Update : Fri Apr 05 05:12:40 2019  
 Response via : Initial Calibration  
 Integrator: ChemStation

Volume Inj. : 1 µl  
 Signal #1 Phase : ZB MR1 Signal #2 Phase: ZB MR2  
 Signal #1 Info : 30Mx0.32mmx 0.5µm Signal #2 Info : 30M x 0.32mm x 0.25µm

	Compound	RT#1	RT#2	Resp#1	Resp#2	ng/ml	ng/ml
42)	L9 AR-1268-2	10.585	9.455	3107468	9855834	2.249	10.567 #
43)	L9 AR-1268-3	10.860	9.671	1587316	718692	1.295	0.909 #
44)	L9 AR-1268-4	11.322	9.983	2507007	960179	4.998	3.089 #
45)	L9 AR-1268-5	11.775	10.303	2736698	1234657	0.649	0.496

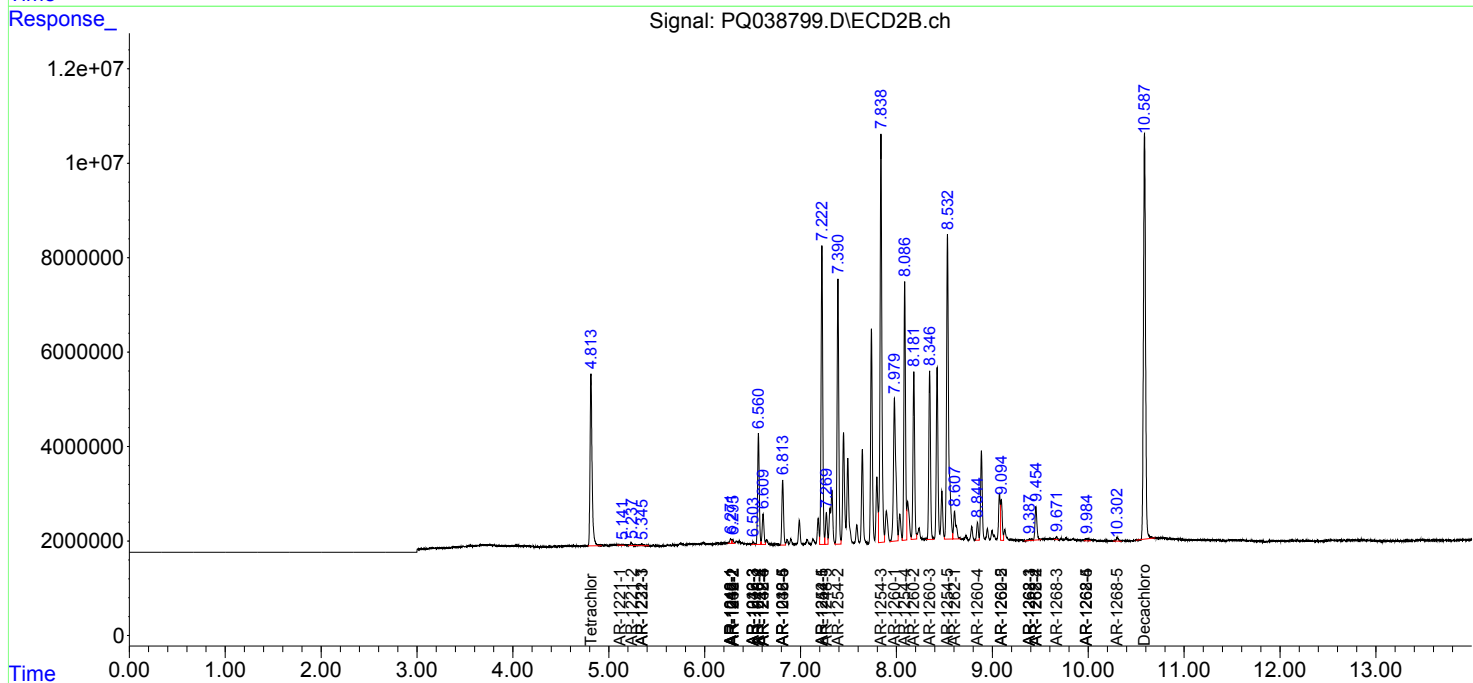
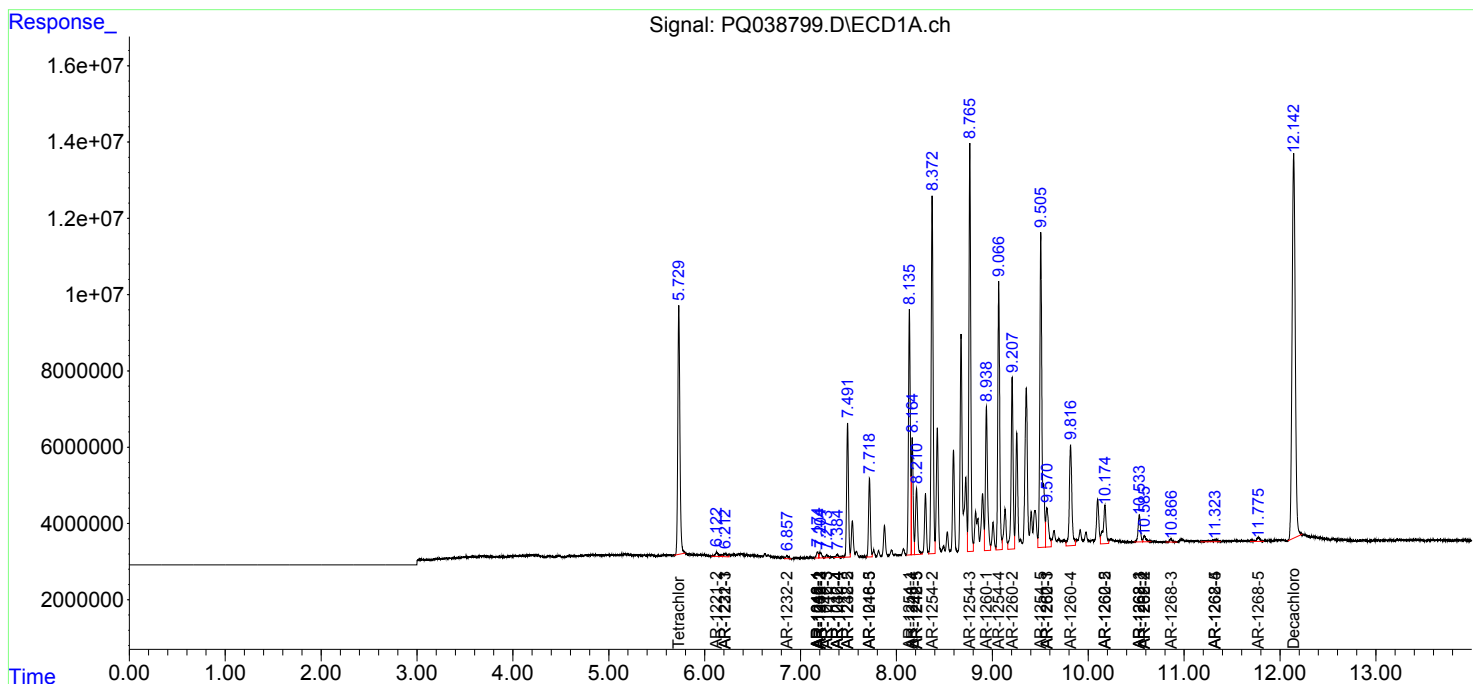
(f)=RT Delta > 1/2 Window (#)=Amounts differ by > 25% (m)=manual int.

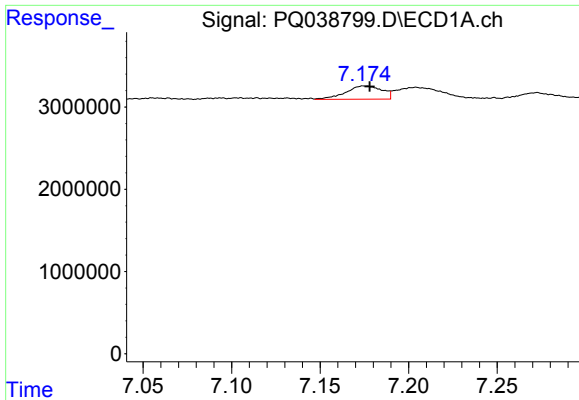
Data Path : Z:\pestpcbsrv\HPCHEM1\ECD\_Q\Data\PQ040519\  
 Data File : PQ038799.D  
 Signal(s) : Signal #1: ECD1A.ch Signal #2: ECD2B.ch  
 Acq On : 06 Apr 2019 02:41  
 Operator : AJ\SJ  
 Sample : AR1254CCC400  
 Misc :  
 ALS Vial : 144 Sample Multiplier: 1

Instrument :  
 ECD\_Q  
 Client Sampled :  
 AR1254309

Integration File signal 1: autoint1.e  
 Integration File signal 2: autoint2.e  
 Quant Time: Apr 06 03:02:49 2019  
 Quant Method : Z:\pestpcbsrv\HPCHEM1\ECD\_Q\Method\PQ040419CLP.M  
 Quant Title : GC EXTRACTABLES  
 QLast Update : Fri Apr 05 05:12:40 2019  
 Response via : Initial Calibration  
 Integrator: ChemStation

Volume Inj. : 1 µl  
 Signal #1 Phase : ZB MR1 Signal #2 Phase: ZB MR2  
 Signal #1 Info : 30Mx0.32mmx 0.5µm Signal #2 Info : 30M x 0.32mm x 0.25µm

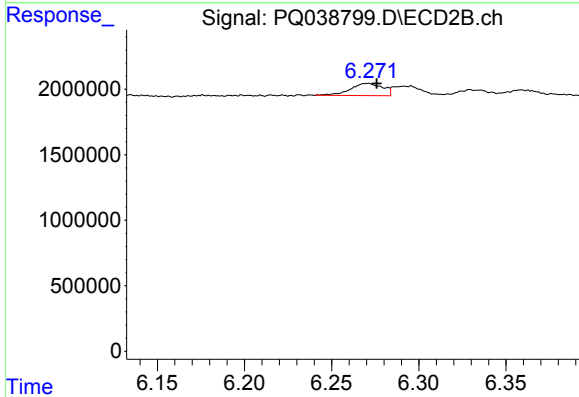




#3 AR-1016-1

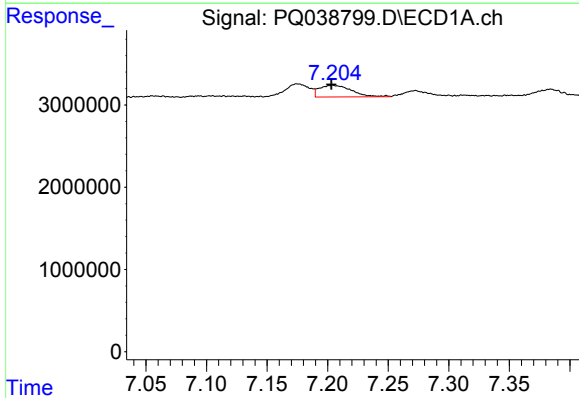
R.T.: 7.175 min  
 Delta R.T.: -0.003 min  
 Response: 2300340  
 Conc: 8.51 ng/ml

Instrument :  
 ECD\_Q  
 ClientSampleId :  
 AR1254309



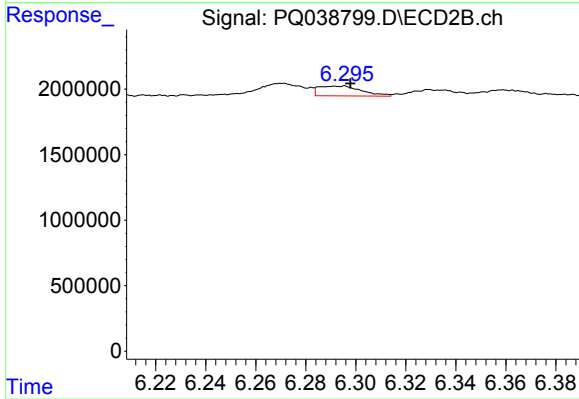
#3 AR-1016-1

R.T.: 6.270 min  
 Delta R.T.: -0.005 min  
 Response: 1208619  
 Conc: 8.11 ng/ml



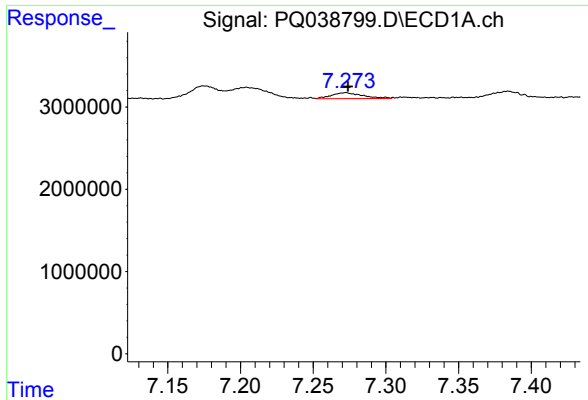
#4 AR-1016-2

R.T.: 7.204 min  
 Delta R.T.: 0.001 min  
 Response: 2620659  
 Conc: 6.48 ng/ml



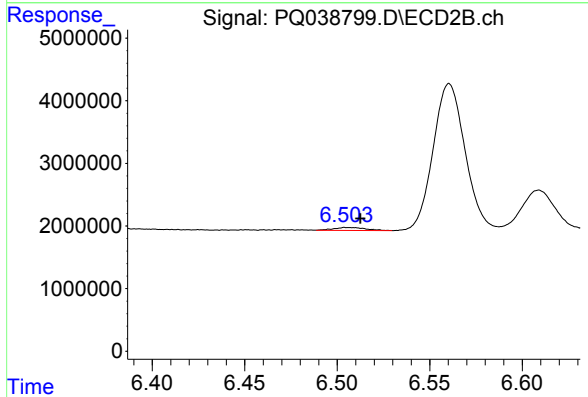
#4 AR-1016-2

R.T.: 6.292 min  
 Delta R.T.: -0.006 min  
 Response: 904495  
 Conc: 4.17 ng/ml

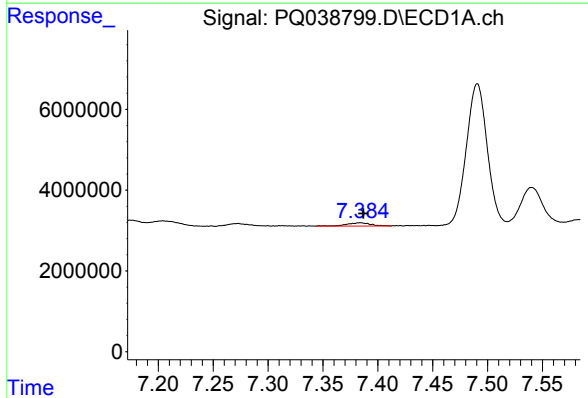


#5 AR-1016-3  
 R.T.: 7.272 min  
 Delta R.T.: -0.002 min  
 Response: 1061156  
 Conc: 4.15 ng/ml

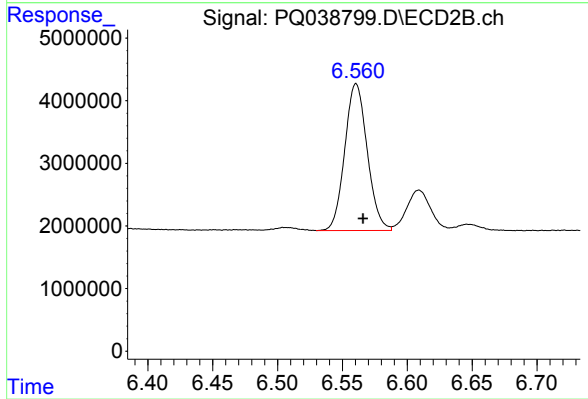
Instrument :  
 ECD\_Q  
 ClientSampleId :  
 AR1254309



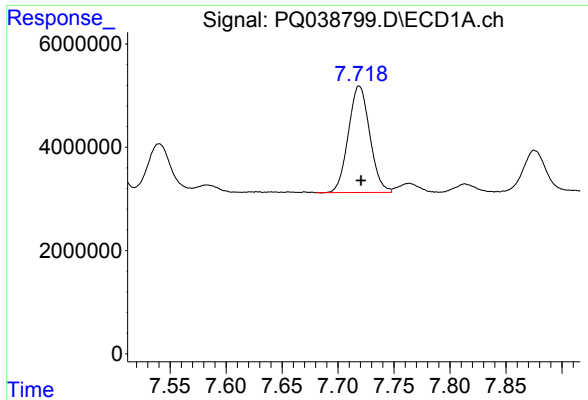
#5 AR-1016-3  
 R.T.: 6.507 min  
 Delta R.T.: -0.006 min  
 Response: 570374  
 Conc: 5.06 ng/ml



#6 AR-1016-4  
 R.T.: 7.384 min  
 Delta R.T.: -0.003 min  
 Response: 1257769  
 Conc: 6.02 ng/ml



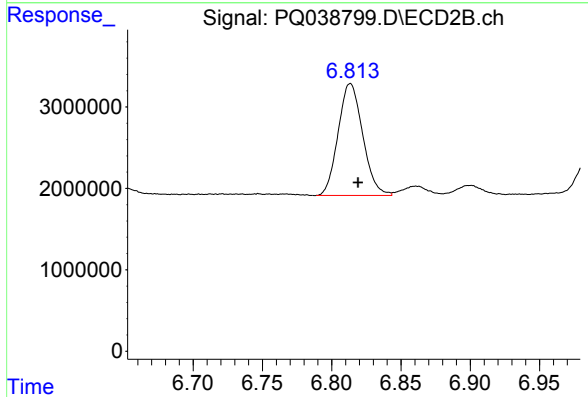
#6 AR-1016-4  
 R.T.: 6.561 min  
 Delta R.T.: -0.005 min  
 Response: 28272327  
 Conc: 327.09 ng/ml



#7 AR-1016-5

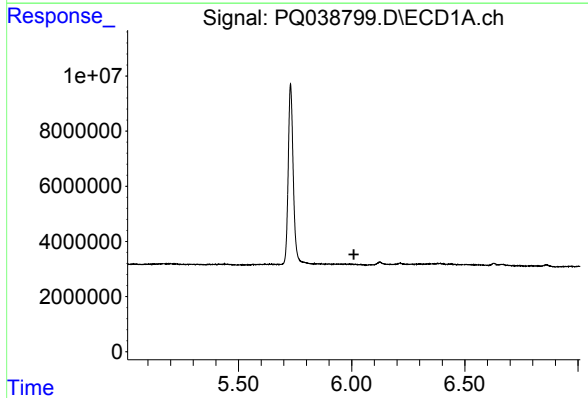
R.T.: 7.719 min  
 Delta R.T.: -0.002 min  
 Response: 27487995  
 Conc: 127.68 ng/ml

Instrument :  
 ECD\_Q  
 ClientSampleId :  
 AR1254309



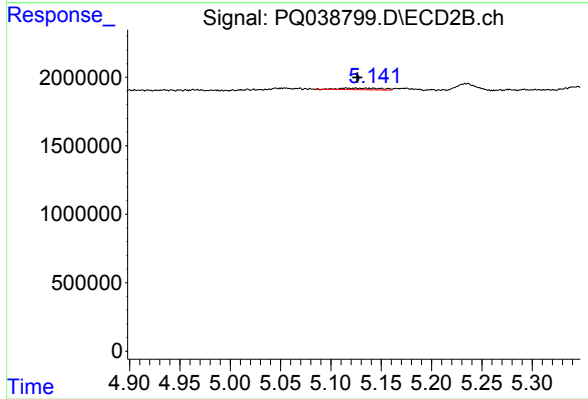
#7 AR-1016-5

R.T.: 6.814 min  
 Delta R.T.: -0.006 min  
 Response: 16966578  
 Conc: 131.40 ng/ml



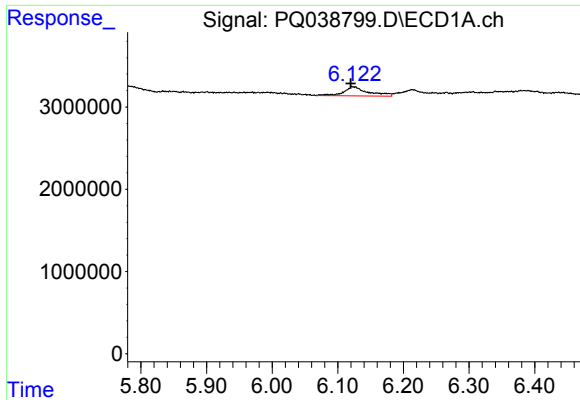
#8 AR-1221-1

R.T.: 0.000 min  
 Exp R.T. : 6.010 min  
 Response: 0  
 Conc: N.D.



#8 AR-1221-1

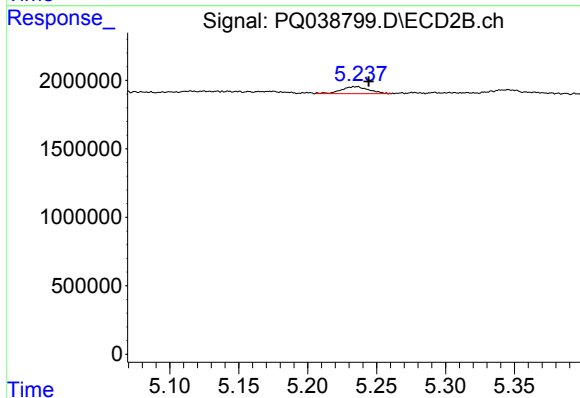
R.T.: 5.115 min  
 Delta R.T.: -0.011 min  
 Response: 316057  
 Conc: 10.88 ng/ml



#9 AR-1221-2

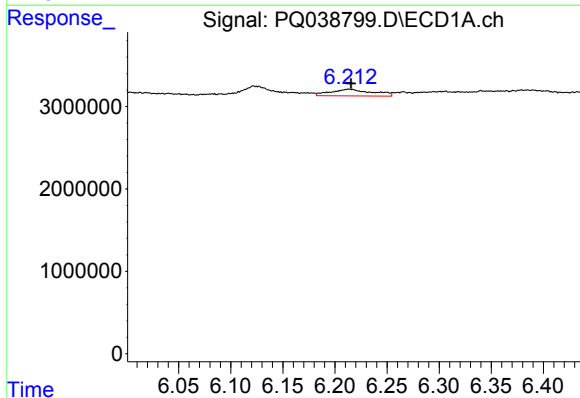
R.T.: 6.124 min  
 Delta R.T.: 0.004 min  
 Response: 2891682  
 Conc: 71.99 ng/ml

Instrument :  
 ECD\_Q  
 ClientSampleId :  
 AR1254309



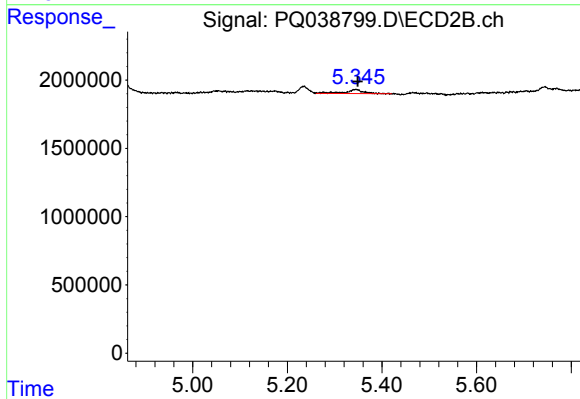
#9 AR-1221-2

R.T.: 5.234 min  
 Delta R.T.: -0.010 min  
 Response: 710352  
 Conc: 34.10 ng/ml



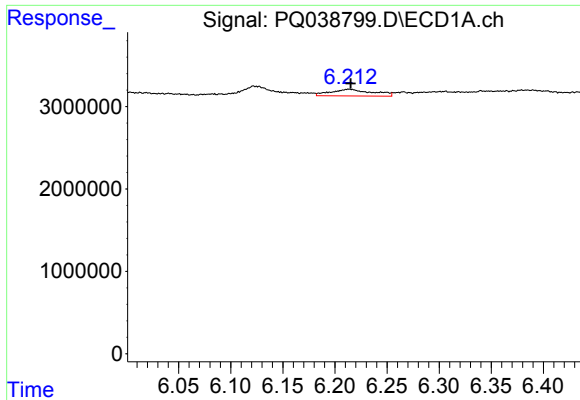
#10 AR-1221-3

R.T.: 6.214 min  
 Delta R.T.: -0.002 min  
 Response: 2271741  
 Conc: 16.09 ng/ml



#10 AR-1221-3

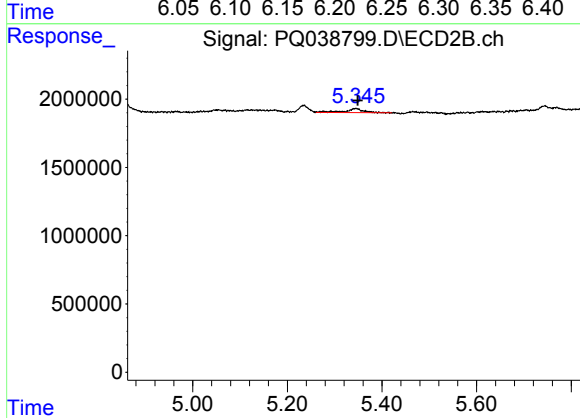
R.T.: 5.345 min  
 Delta R.T.: -0.004 min  
 Response: 780361  
 Conc: 10.63 ng/ml



#11 AR-1232-1

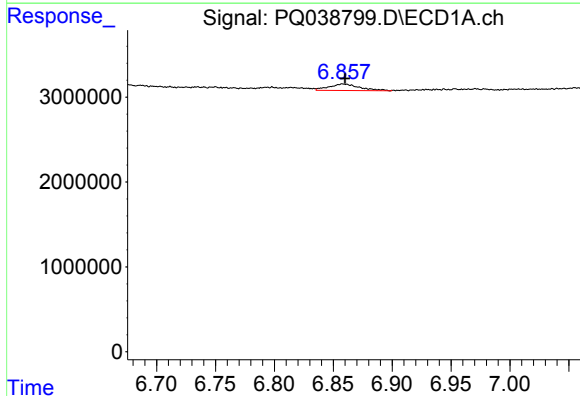
R.T.: 6.214 min  
 Delta R.T.: -0.001 min  
 Response: 2271741  
 Conc: 23.43 ng/ml

Instrument :  
 ECD\_Q  
 ClientSampled :  
 AR1254309



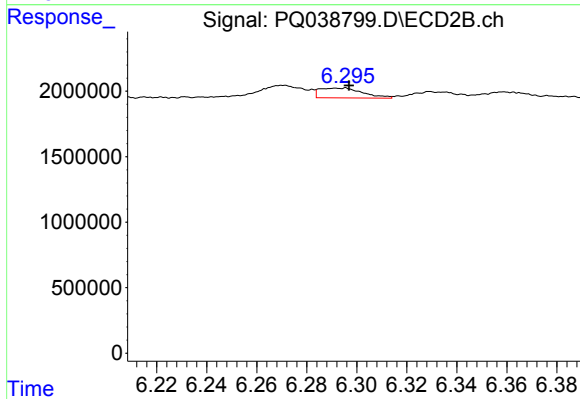
#11 AR-1232-1

R.T.: 5.345 min  
 Delta R.T.: -0.004 min  
 Response: 780361  
 Conc: 15.14 ng/ml



#12 AR-1232-2

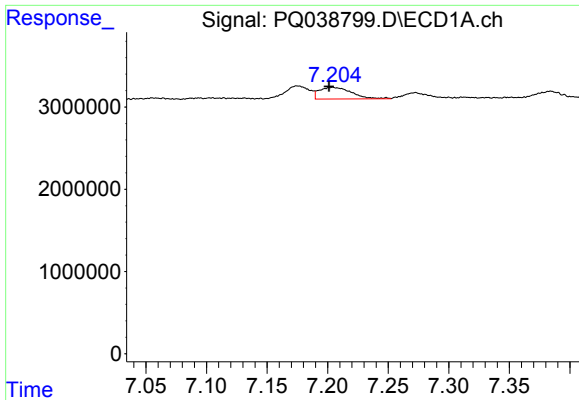
R.T.: 6.859 min  
 Delta R.T.: -0.001 min  
 Response: 1406831  
 Conc: 25.10 ng/ml



#12 AR-1232-2

R.T.: 6.292 min  
 Delta R.T.: -0.005 min  
 Response: 904495  
 Conc: 15.54 ng/ml

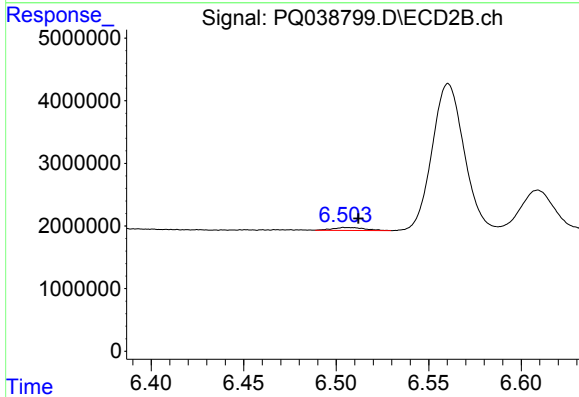




#13 AR-1232-3

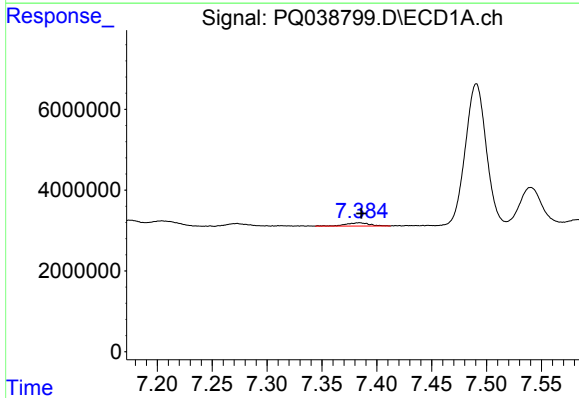
R.T.: 7.204 min  
 Delta R.T.: 0.003 min  
 Response: 2620659  
 Conc: 24.59 ng/ml

**Instrument :**  
 ECD\_Q  
**ClientSampled :**  
 AR1254309



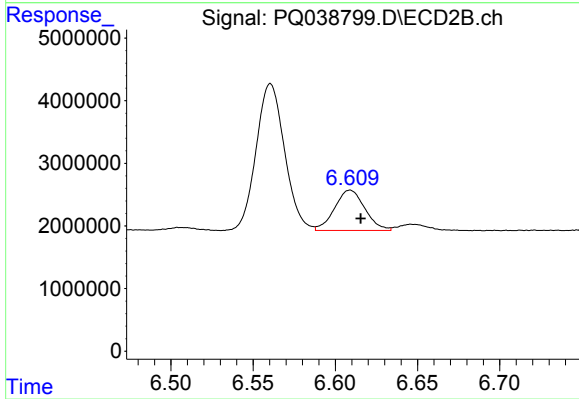
#13 AR-1232-3

R.T.: 6.507 min  
 Delta R.T.: -0.005 min  
 Response: 570374  
 Conc: 18.77 ng/ml



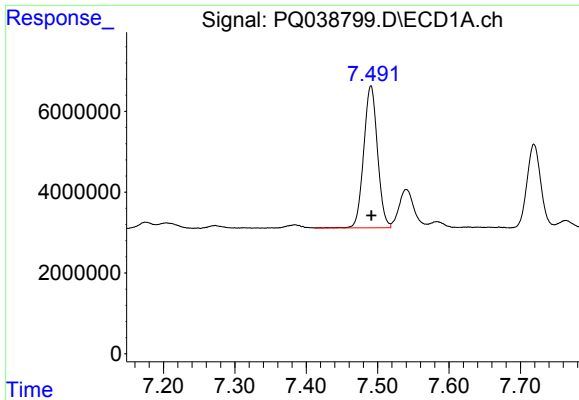
#14 AR-1232-4

R.T.: 7.384 min  
 Delta R.T.: -0.002 min  
 Response: 1257769  
 Conc: 22.73 ng/ml



#14 AR-1232-4

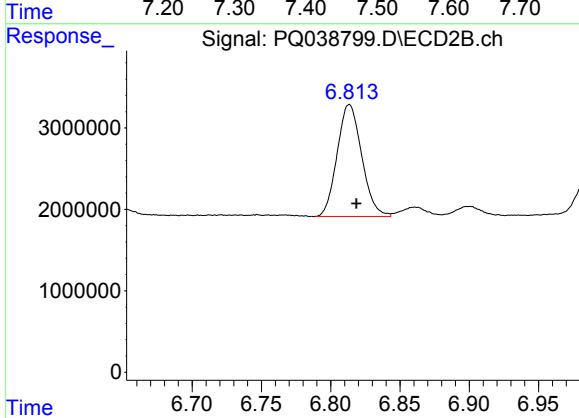
R.T.: 6.609 min  
 Delta R.T.: -0.006 min  
 Response: 8274148  
 Conc: 296.17 ng/ml



#15 AR-1232-5

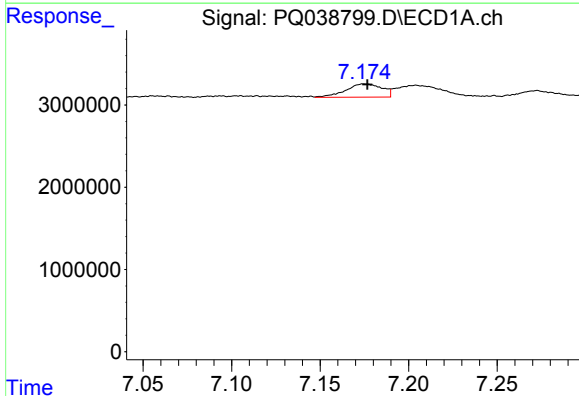
R.T.: 7.491 min  
 Delta R.T.: 0.000 min  
 Response: 47046463  
 Conc: 1206.28 ng/ml

**Instrument :**  
 ECD\_Q  
**ClientSampleId :**  
 AR1254309



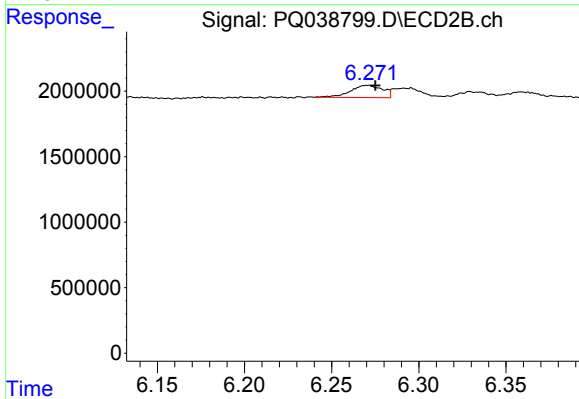
#15 AR-1232-5

R.T.: 6.814 min  
 Delta R.T.: -0.005 min  
 Response: 16966578  
 Conc: 517.18 ng/ml



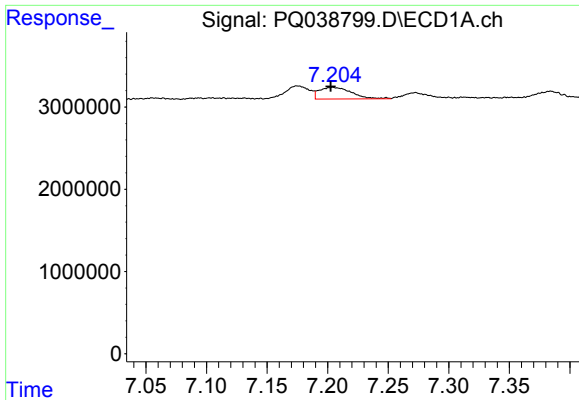
#16 AR-1242-1

R.T.: 7.175 min  
 Delta R.T.: -0.001 min  
 Response: 2300340  
 Conc: 15.07 ng/ml



#16 AR-1242-1

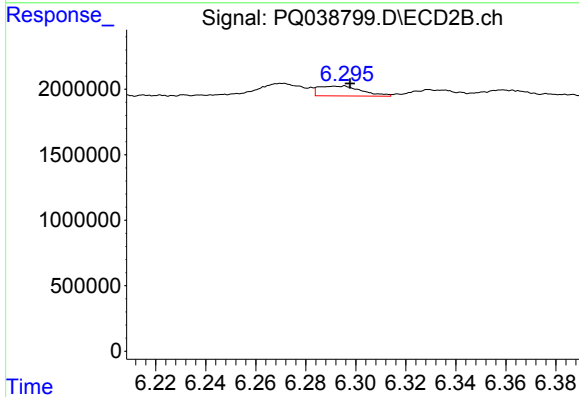
R.T.: 6.270 min  
 Delta R.T.: -0.005 min  
 Response: 1208619  
 Conc: 13.95 ng/ml



#17 AR-1242-2

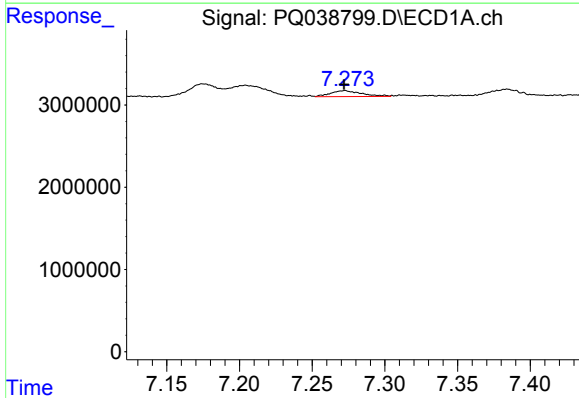
R.T.: 7.204 min  
 Delta R.T.: 0.002 min  
 Response: 2620659  
 Conc: 11.65 ng/ml

**Instrument :**  
 ECD\_Q  
**ClientSampleId :**  
 AR1254309



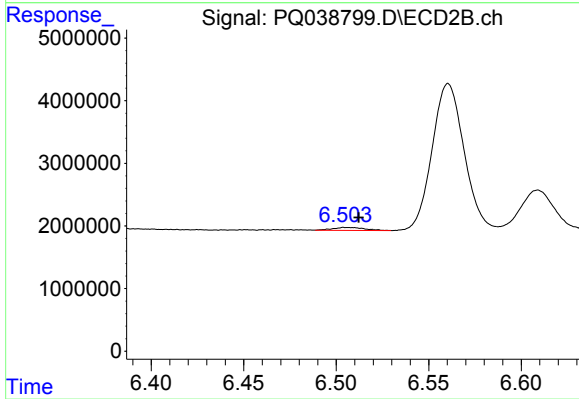
#17 AR-1242-2

R.T.: 6.292 min  
 Delta R.T.: -0.006 min  
 Response: 904495  
 Conc: 7.25 ng/ml



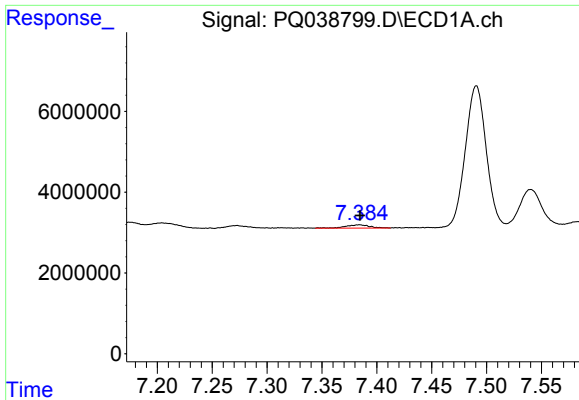
#18 AR-1242-3

R.T.: 7.272 min  
 Delta R.T.: 0.000 min  
 Response: 1061156  
 Conc: 7.49 ng/ml



#18 AR-1242-3

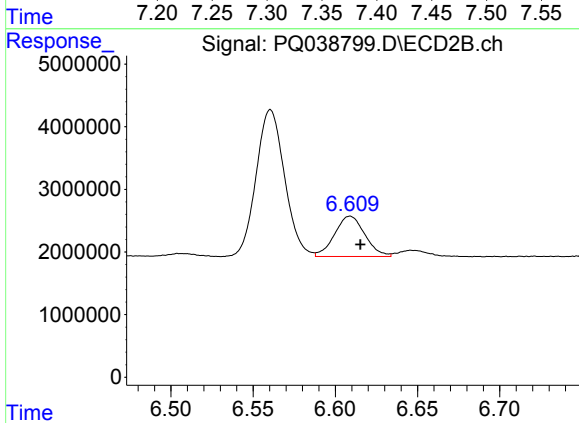
R.T.: 6.507 min  
 Delta R.T.: -0.006 min  
 Response: 570374  
 Conc: 8.51 ng/ml



#19 AR-1242-4

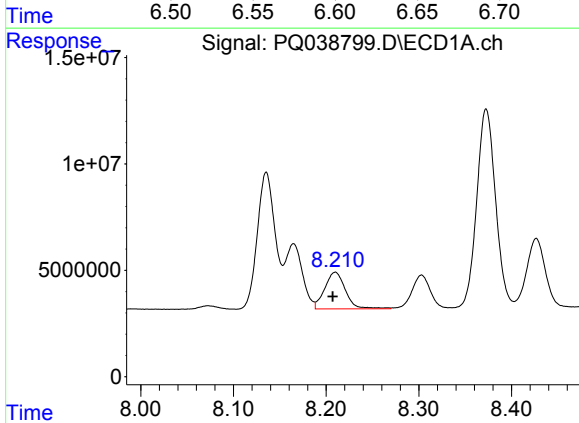
R.T.: 7.384 min  
 Delta R.T.: 0.000 min  
 Response: 1257769  
 Conc: 10.87 ng/ml

Instrument :  
 ECD\_Q  
 ClientSampled :  
 AR1254309



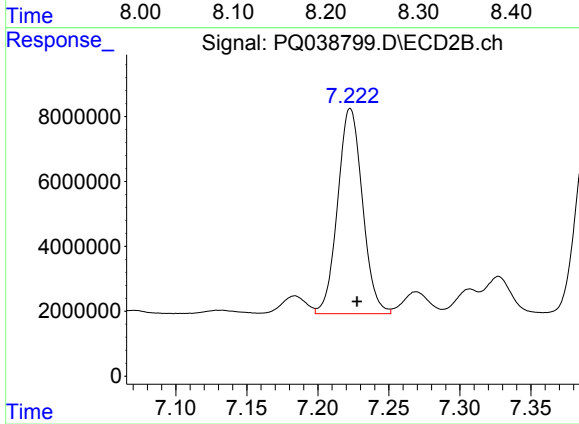
#19 AR-1242-4

R.T.: 6.609 min  
 Delta R.T.: -0.006 min  
 Response: 8274148  
 Conc: 122.49 ng/ml



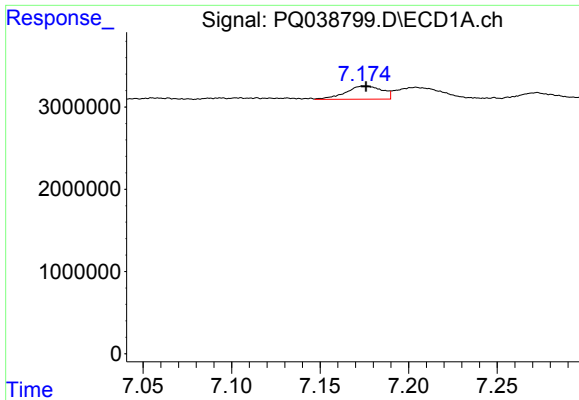
#20 AR-1242-5

R.T.: 8.210 min  
 Delta R.T.: 0.003 min  
 Response: 26881495  
 Conc: 197.97 ng/ml



#20 AR-1242-5

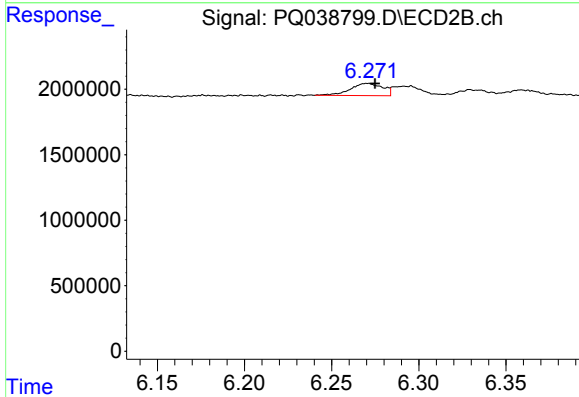
R.T.: 7.223 min  
 Delta R.T.: -0.005 min  
 Response: 76827434  
 Conc: 804.56 ng/ml



#21 AR-1248-1

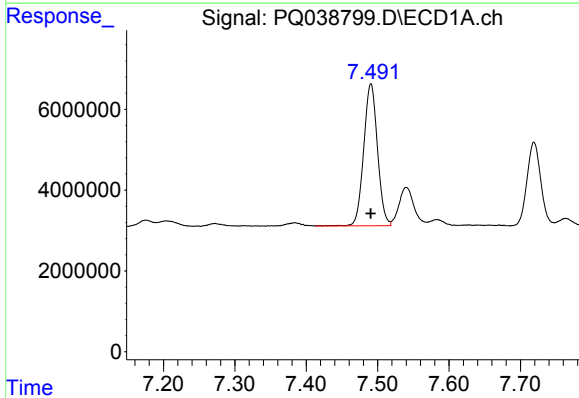
R.T.: 7.175 min  
 Delta R.T.: 0.000 min  
 Response: 2300340  
 Conc: 21.82 ng/ml

**Instrument :**  
 ECD\_Q  
**ClientSampleId :**  
 AR1254309



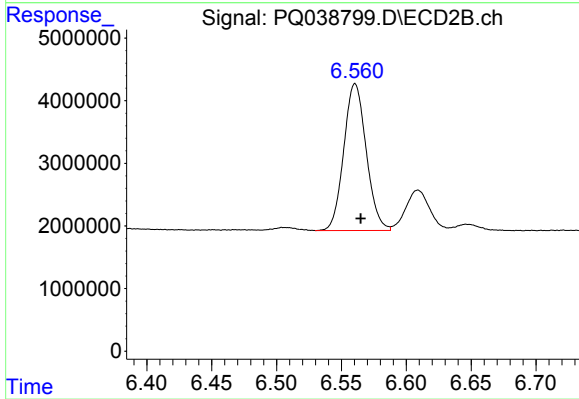
#21 AR-1248-1

R.T.: 6.270 min  
 Delta R.T.: -0.004 min  
 Response: 1208619  
 Conc: 20.04 ng/ml



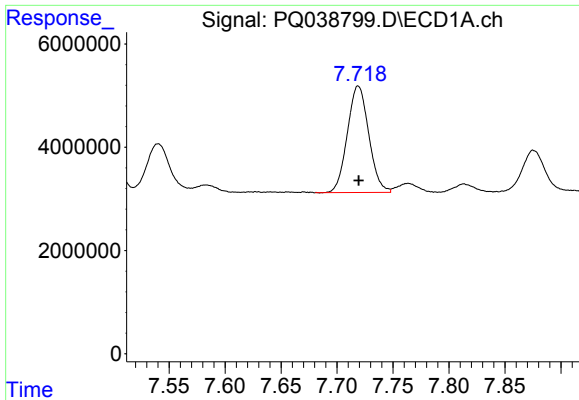
#22 AR-1248-2

R.T.: 7.491 min  
 Delta R.T.: 0.000 min  
 Response: 47046463  
 Conc: 314.23 ng/ml



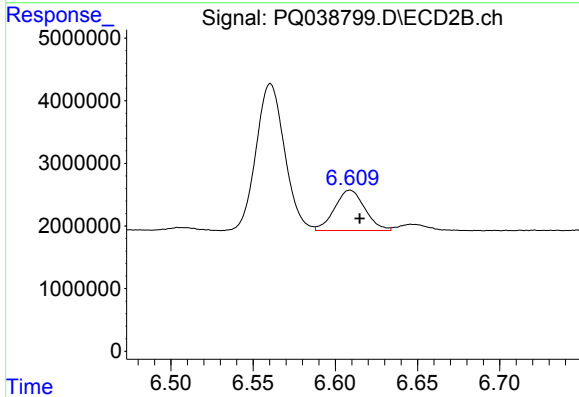
#22 AR-1248-2

R.T.: 6.561 min  
 Delta R.T.: -0.004 min  
 Response: 28272327  
 Conc: 334.12 ng/ml

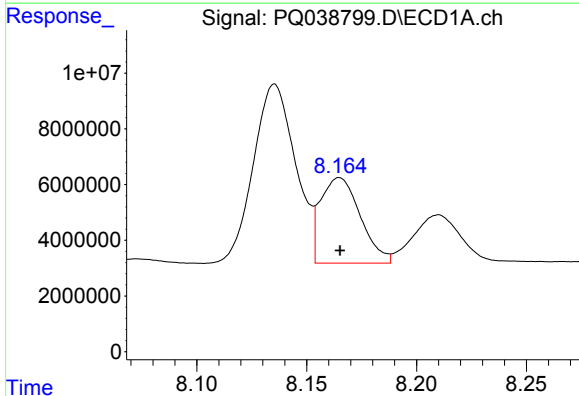


#23 AR-1248-3  
 R.T.: 7.719 min  
 Delta R.T.: 0.000 min  
 Response: 27487995  
 Conc: 150.39 ng/ml

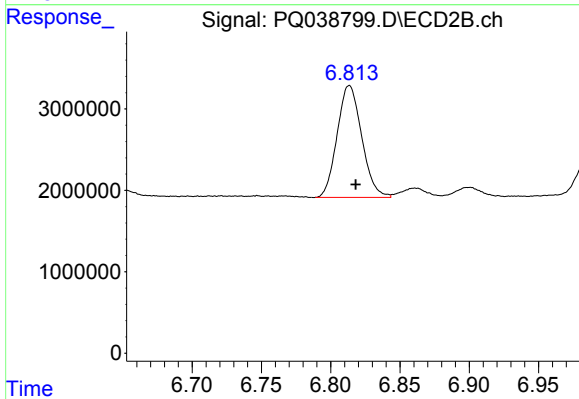
Instrument :  
 ECD\_Q  
 ClientSampleId :  
 AR1254309



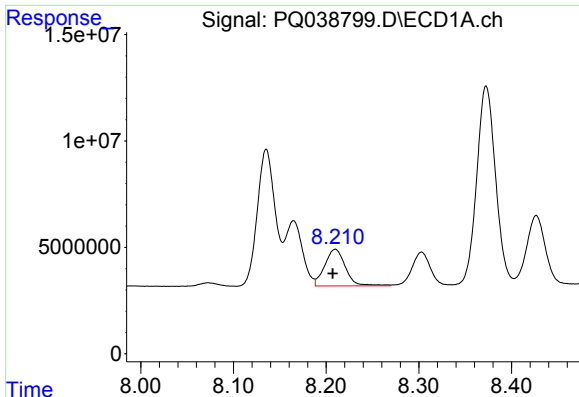
#23 AR-1248-3  
 R.T.: 6.609 min  
 Delta R.T.: -0.006 min  
 Response: 8274148  
 Conc: 93.17 ng/ml



#24 AR-1248-4  
 R.T.: 8.165 min  
 Delta R.T.: 0.000 min  
 Response: 38690494  
 Conc: 190.40 ng/ml



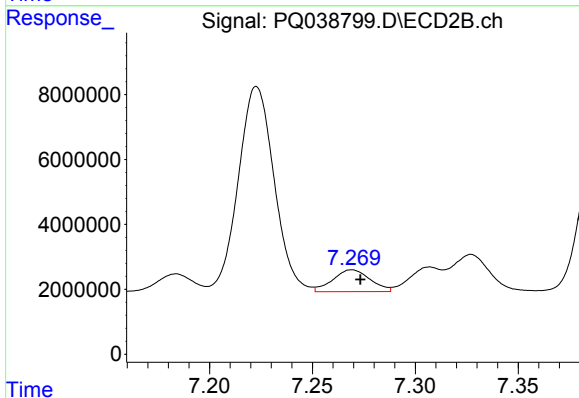
#24 AR-1248-4  
 R.T.: 6.814 min  
 Delta R.T.: -0.005 min  
 Response: 16966578  
 Conc: 147.98 ng/ml



#25 AR-1248-5

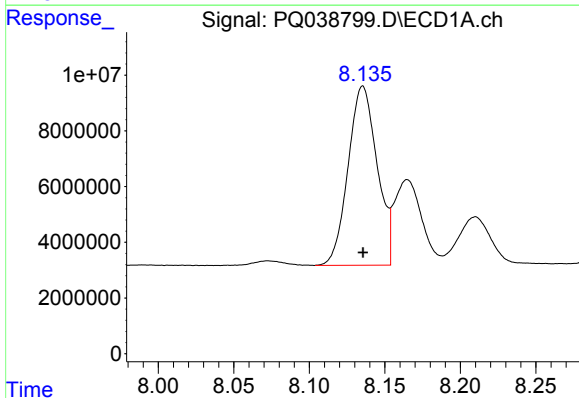
R.T.: 8.210 min  
 Delta R.T.: 0.003 min  
 Response: 26881495  
 Conc: 132.46 ng/ml

Instrument :  
 ECD\_Q  
 ClientSampleId :  
 AR1254309



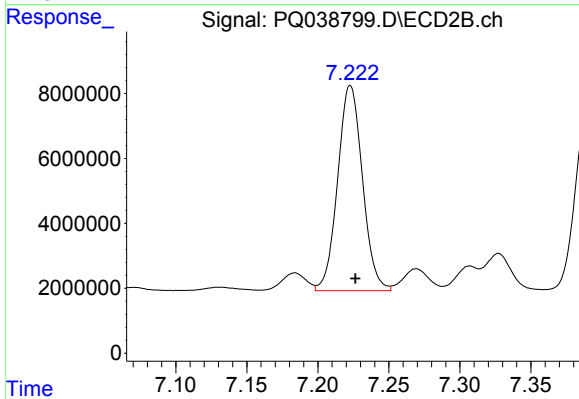
#25 AR-1248-5

R.T.: 7.269 min  
 Delta R.T.: -0.004 min  
 Response: 8518503  
 Conc: 73.99 ng/ml



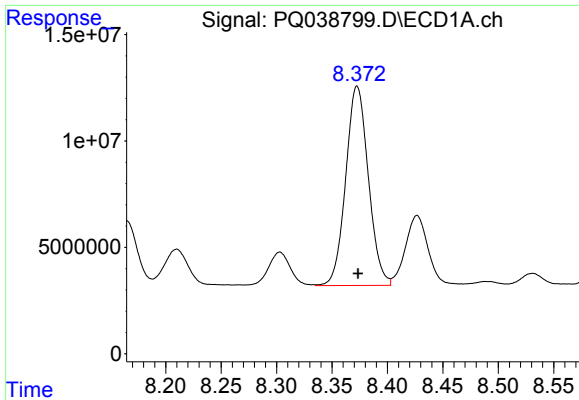
#26 AR-1254-1

R.T.: 8.135 min  
 Delta R.T.: 0.000 min  
 Response: 85954340  
 Conc: 398.35 ng/ml



#26 AR-1254-1

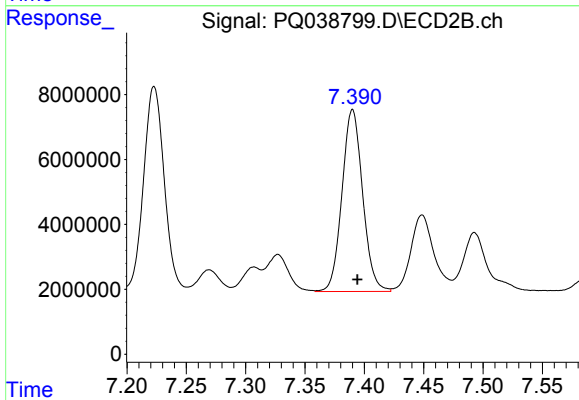
R.T.: 7.223 min  
 Delta R.T.: -0.003 min  
 Response: 76827434  
 Conc: 418.11 ng/ml



#27 AR-1254-2

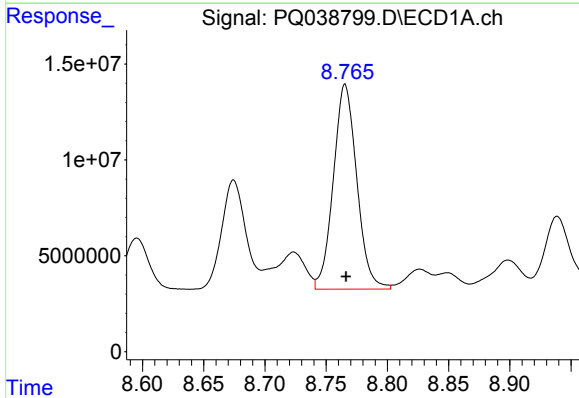
R.T.: 8.373 min  
 Delta R.T.: 0.000 min  
 Response: 133126496  
 Conc: 392.96 ng/ml

Instrument :  
 ECD\_Q  
 ClientSampled :  
 AR1254309



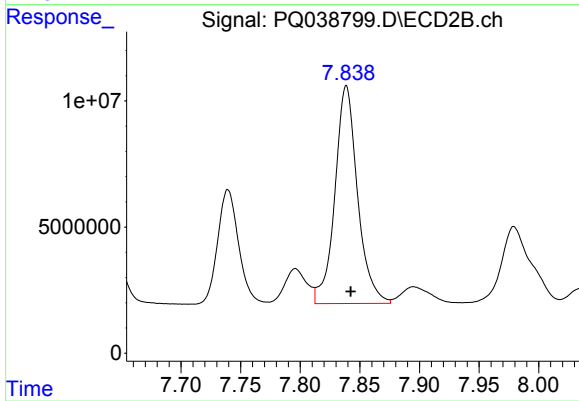
#27 AR-1254-2

R.T.: 7.390 min  
 Delta R.T.: -0.004 min  
 Response: 67937134  
 Conc: 419.72 ng/ml



#28 AR-1254-3

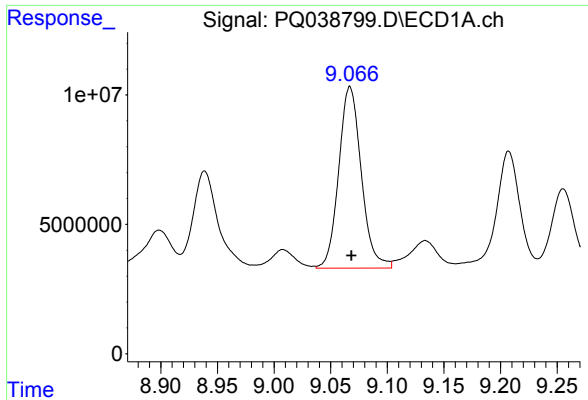
R.T.: 8.766 min  
 Delta R.T.: 0.000 min  
 Response: 142205857  
 Conc: 382.62 ng/ml



#28 AR-1254-3

R.T.: 7.839 min  
 Delta R.T.: -0.004 min  
 Response: 114394113  
 Conc: 404.88 ng/ml

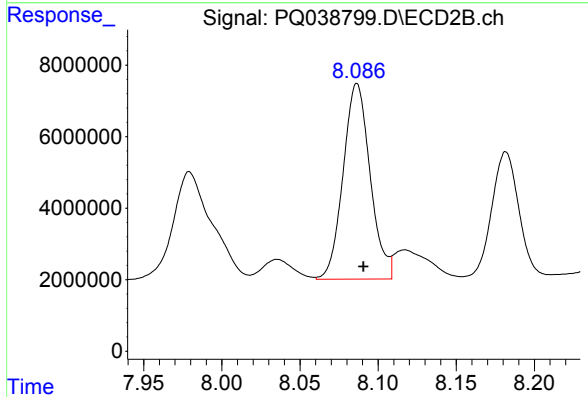




#29 AR-1254-4

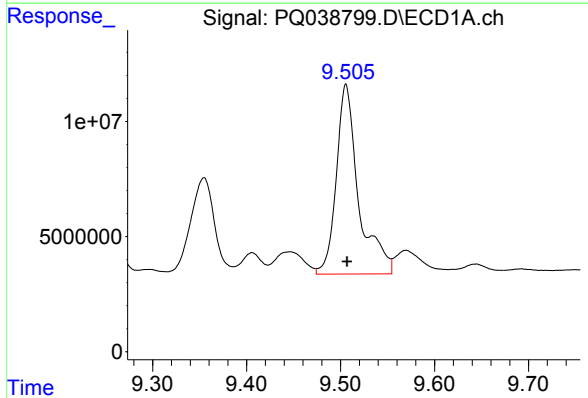
R.T.: 9.067 min  
 Delta R.T.: -0.001 min  
 Response: 97274557  
 Conc: 381.45 ng/ml

Instrument :  
 ECD\_Q  
 ClientSampleId :  
 AR1254309



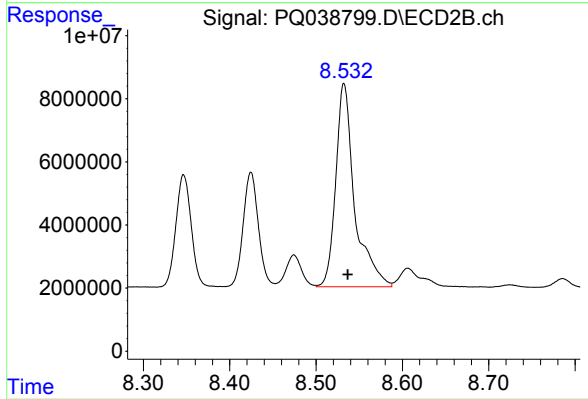
#29 AR-1254-4

R.T.: 8.086 min  
 Delta R.T.: -0.004 min  
 Response: 65877581  
 Conc: 397.02 ng/ml



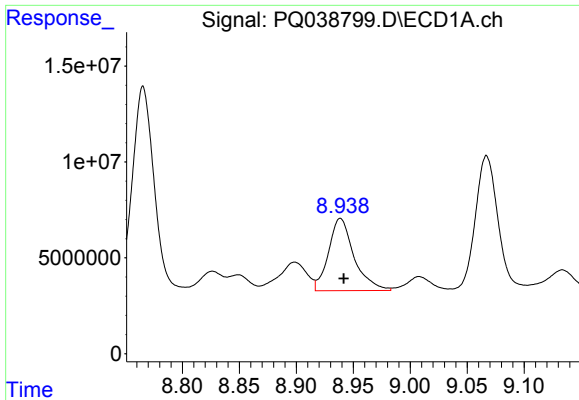
#30 AR-1254-5

R.T.: 9.506 min  
 Delta R.T.: 0.000 min  
 Response: 135922087  
 Conc: 456.06 ng/ml



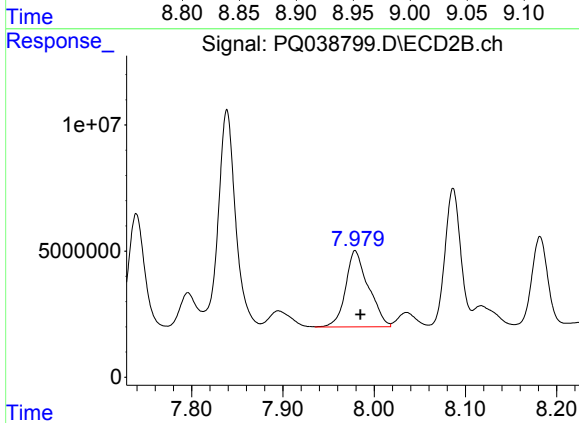
#30 AR-1254-5

R.T.: 8.533 min  
 Delta R.T.: -0.004 min  
 Response: 98073460  
 Conc: 398.15 ng/ml

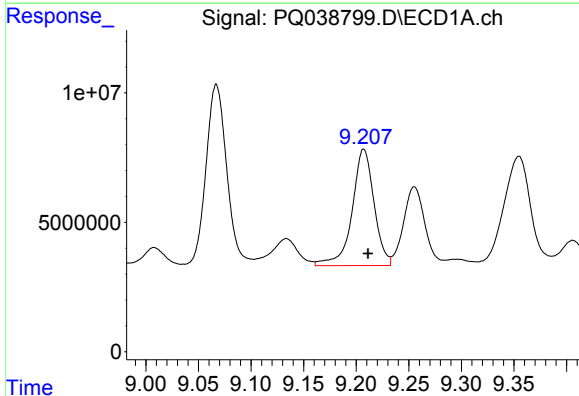


#31 AR-1260-1  
 R.T.: 8.939 min  
 Delta R.T.: -0.003 min  
 Response: 58901537  
 Conc: 123.14 ng/ml

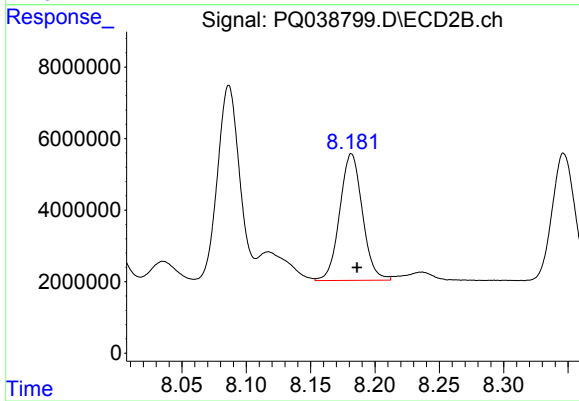
**Instrument :**  
 ECD\_Q  
**ClientSampleId :**  
 AR1254309



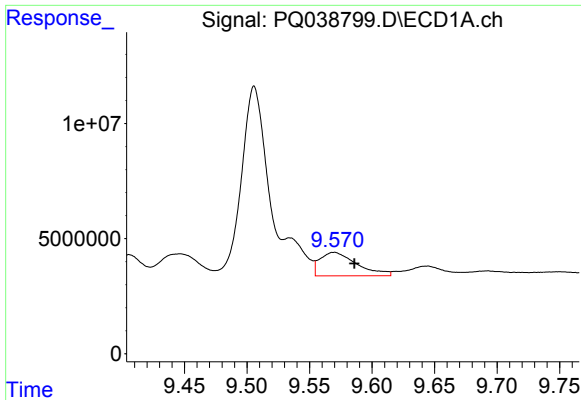
#31 AR-1260-1  
 R.T.: 7.979 min  
 Delta R.T.: -0.006 min  
 Response: 52419187  
 Conc: 173.04 ng/ml



#32 AR-1260-2  
 R.T.: 9.207 min  
 Delta R.T.: -0.004 min  
 Response: 65332448  
 Conc: 115.02 ng/ml

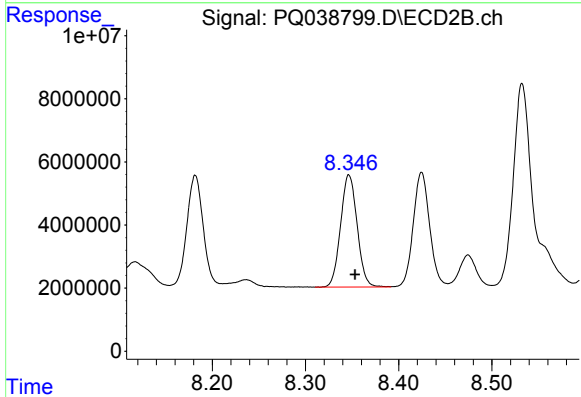


#32 AR-1260-2  
 R.T.: 8.182 min  
 Delta R.T.: -0.005 min  
 Response: 43405470  
 Conc: 117.18 ng/ml

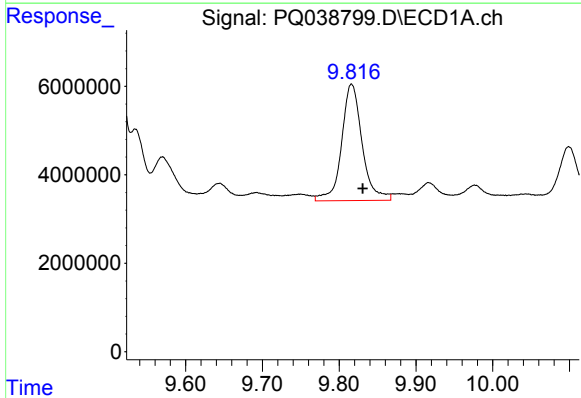


#33 AR-1260-3  
 R.T.: 9.570 min  
 Delta R.T.: -0.016 min  
 Response: 20999611  
 Conc: 48.20 ng/ml

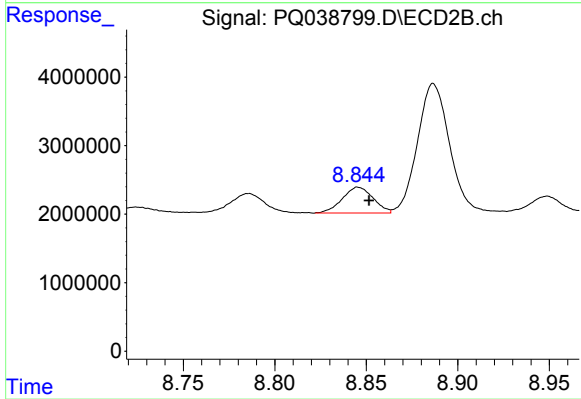
Instrument :  
 ECD\_Q  
 ClientSampled :  
 AR1254309



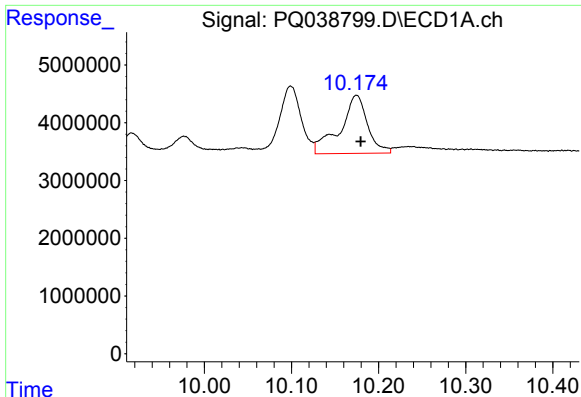
#33 AR-1260-3  
 R.T.: 8.347 min  
 Delta R.T.: -0.006 min  
 Response: 43916375  
 Conc: 125.27 ng/ml



#34 AR-1260-4  
 R.T.: 9.816 min  
 Delta R.T.: -0.015 min  
 Response: 48847581  
 Conc: 95.18 ng/ml



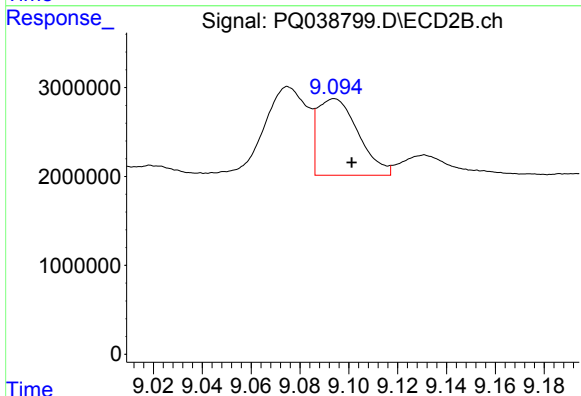
#34 AR-1260-4  
 R.T.: 8.846 min  
 Delta R.T.: -0.006 min  
 Response: 4417192  
 Conc: 15.30 ng/ml



#35 AR-1260-5

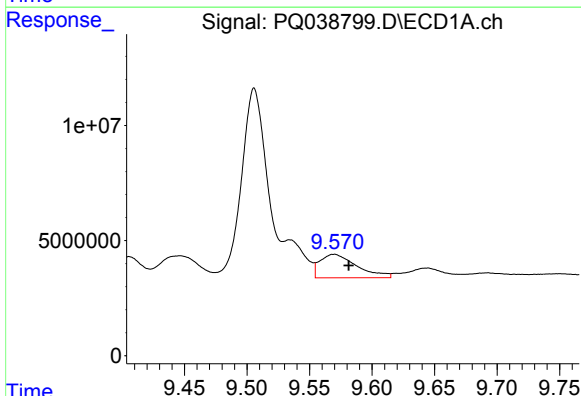
R.T.: 10.175 min  
 Delta R.T.: -0.005 min  
 Response: 22044882  
 Conc: 21.23 ng/ml

Instrument :  
 ECD\_Q  
 ClientSampleId :  
 AR1254309



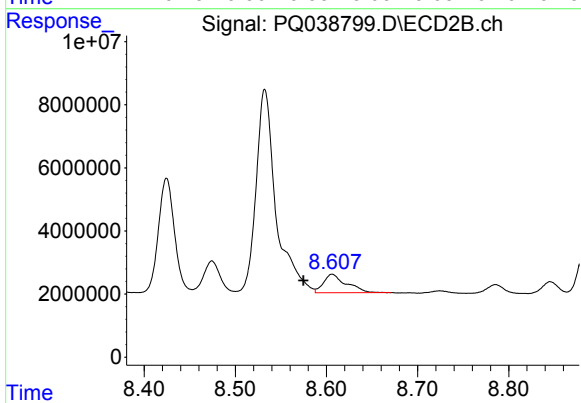
#35 AR-1260-5

R.T.: 9.094 min  
 Delta R.T.: -0.008 min  
 Response: 9967498  
 Conc: 14.05 ng/ml



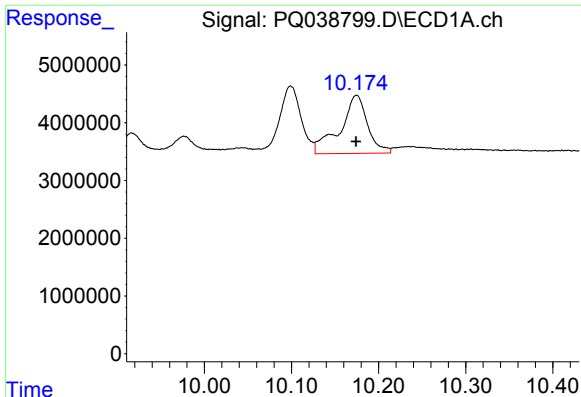
#36 AR-1262-1

R.T.: 9.570 min  
 Delta R.T.: -0.012 min  
 Response: 20999611  
 Conc: 56.53 ng/ml



#36 AR-1262-1

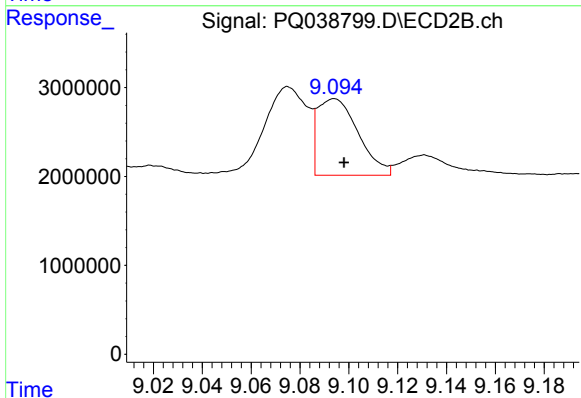
R.T.: 8.606 min  
 Delta R.T.: 0.032 min  
 Response: 10244248  
 Conc: 39.13 ng/ml



#37 AR-1262-2

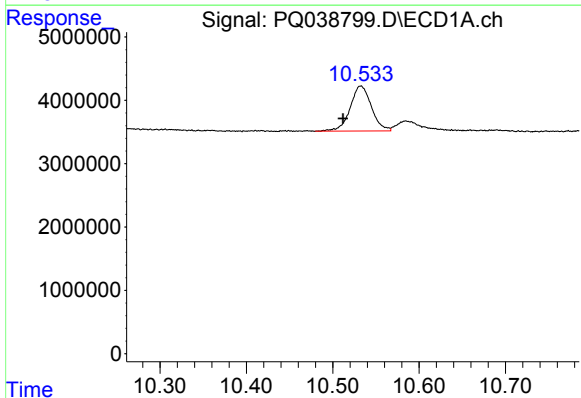
R.T.: 10.175 min  
 Delta R.T.: 0.000 min  
 Response: 22044882  
 Conc: 33.35 ng/ml

Instrument :  
 ECD\_Q  
 ClientSampled :  
 AR1254309



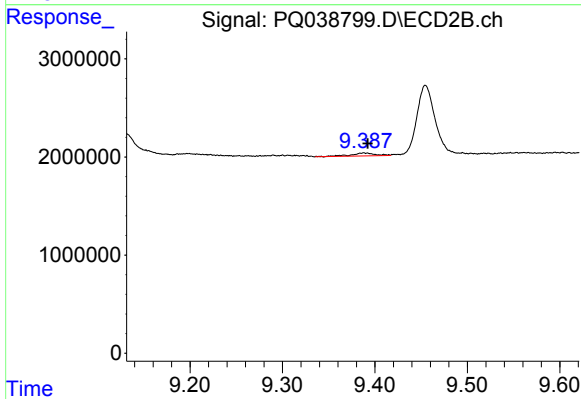
#37 AR-1262-2

R.T.: 9.094 min  
 Delta R.T.: -0.004 min  
 Response: 9967498  
 Conc: 20.86 ng/ml



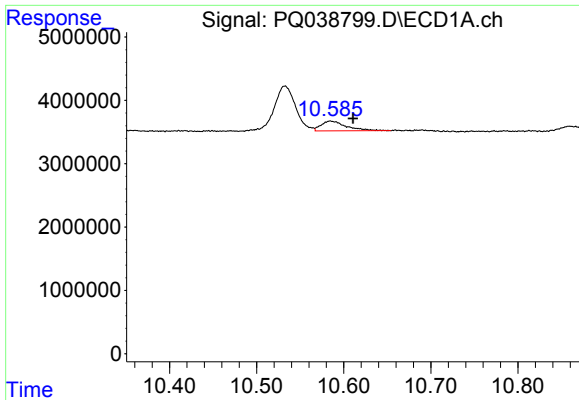
#38 AR-1262-3

R.T.: 10.533 min  
 Delta R.T.: 0.021 min  
 Response: 12154510  
 Conc: 26.90 ng/ml



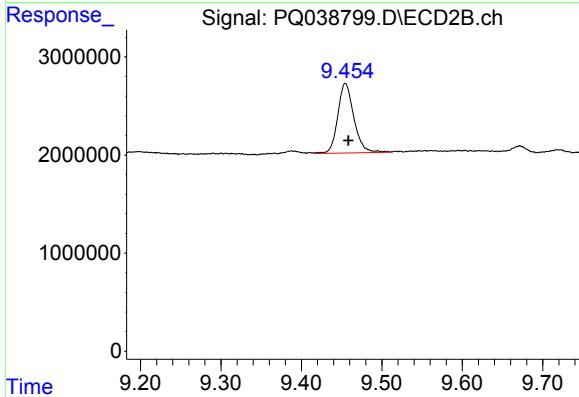
#38 AR-1262-3

R.T.: 9.388 min  
 Delta R.T.: -0.004 min  
 Response: 536798  
 Conc: 2.76 ng/ml

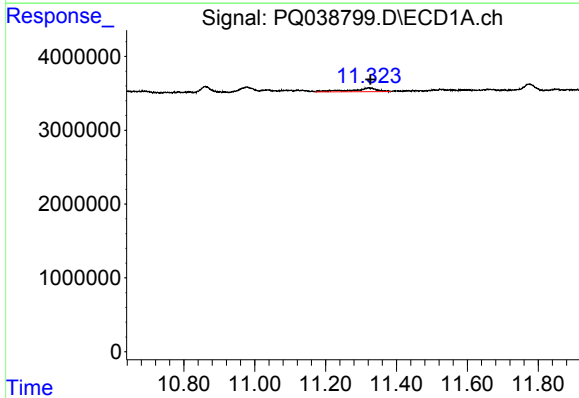


#39 AR-1262-4  
 R.T.: 10.585 min  
 Delta R.T.: -0.025 min  
 Response: 3107468  
 Conc: 8.66 ng/ml

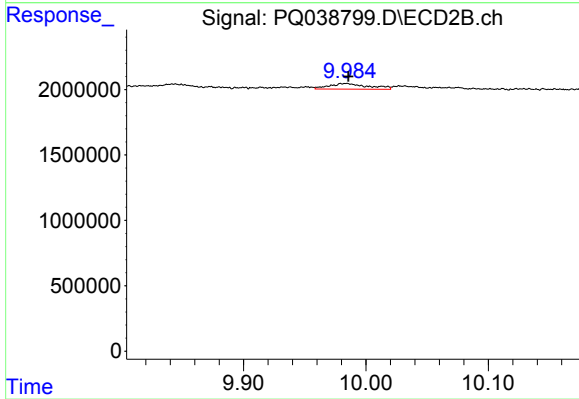
**Instrument :**  
 ECD\_Q  
**ClientSampled :**  
 AR1254309



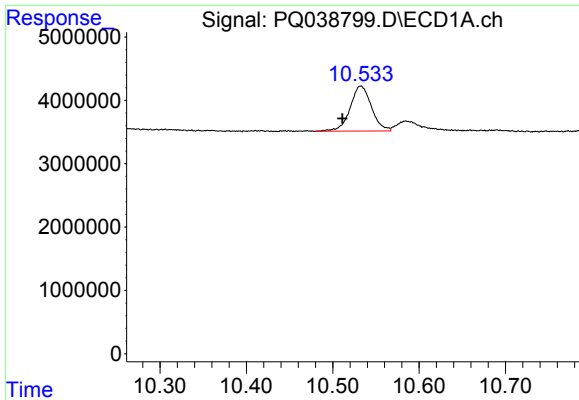
#39 AR-1262-4  
 R.T.: 9.455 min  
 Delta R.T.: -0.003 min  
 Response: 9855834  
 Conc: 26.76 ng/ml



#40 AR-1262-5  
 R.T.: 11.322 min  
 Delta R.T.: -0.005 min  
 Response: 2507007  
 Conc: 10.08 ng/ml

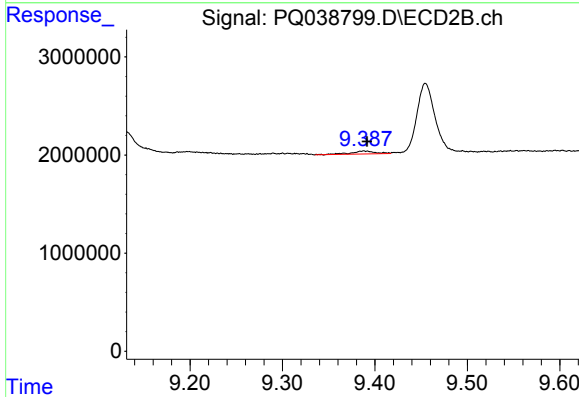


#40 AR-1262-5  
 R.T.: 9.983 min  
 Delta R.T.: -0.002 min  
 Response: 960179  
 Conc: 6.36 ng/ml

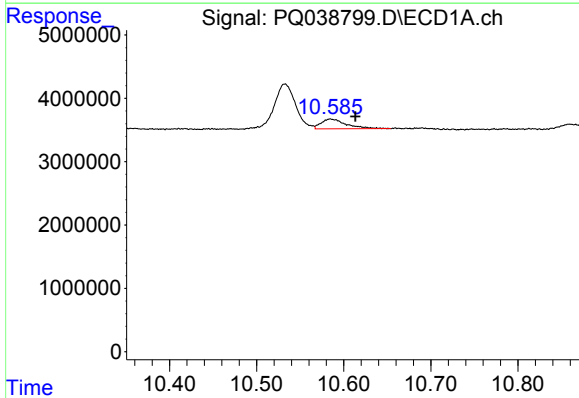


#41 AR-1268-1  
 R.T.: 10.533 min  
 Delta R.T.: 0.021 min  
 Response: 12154510  
 Conc: 8.14 ng/ml

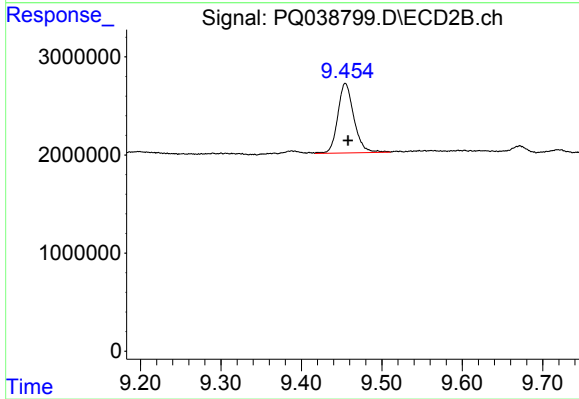
Instrument :  
 ECD\_Q  
 ClientSampleId :  
 AR1254309



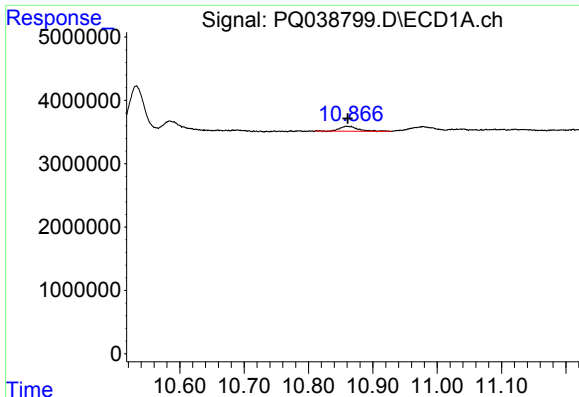
#41 AR-1268-1  
 R.T.: 9.388 min  
 Delta R.T.: -0.003 min  
 Response: 536798  
 Conc: 0.53 ng/ml



#42 AR-1268-2  
 R.T.: 10.585 min  
 Delta R.T.: -0.028 min  
 Response: 3107468  
 Conc: 2.25 ng/ml



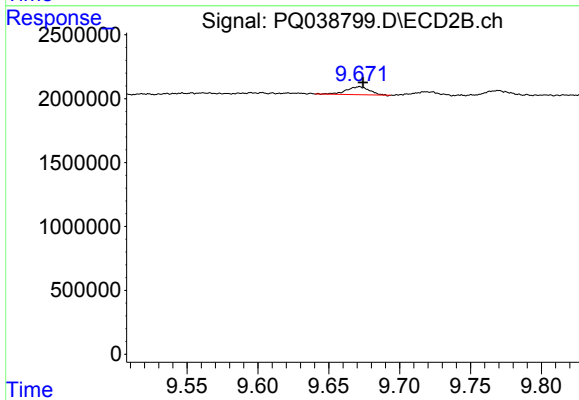
#42 AR-1268-2  
 R.T.: 9.455 min  
 Delta R.T.: -0.003 min  
 Response: 9855834  
 Conc: 10.57 ng/ml



#43 AR-1268-3

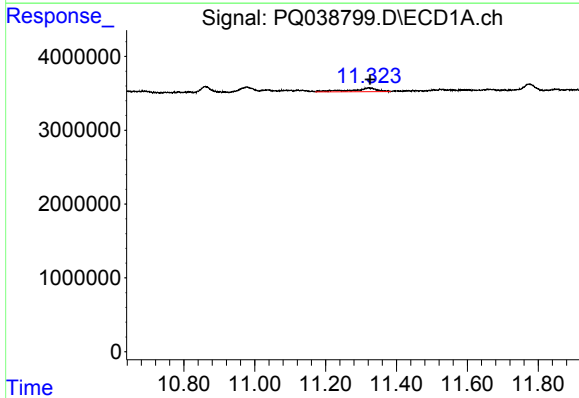
R.T.: 10.860 min  
 Delta R.T.: 0.000 min  
 Response: 1587316  
 Conc: 1.30 ng/ml

Instrument :  
 ECD\_Q  
 ClientSampled :  
 AR1254309



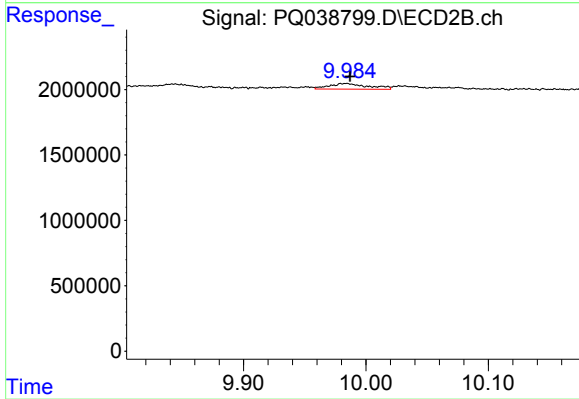
#43 AR-1268-3

R.T.: 9.671 min  
 Delta R.T.: -0.003 min  
 Response: 718692  
 Conc: 0.91 ng/ml



#44 AR-1268-4

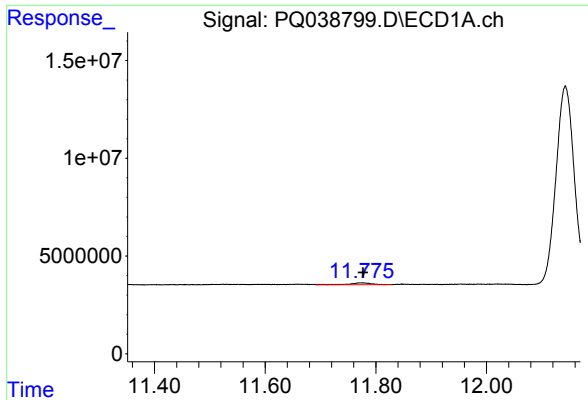
R.T.: 11.322 min  
 Delta R.T.: -0.004 min  
 Response: 2507007  
 Conc: 5.00 ng/ml



#44 AR-1268-4

R.T.: 9.983 min  
 Delta R.T.: -0.004 min  
 Response: 960179  
 Conc: 3.09 ng/ml

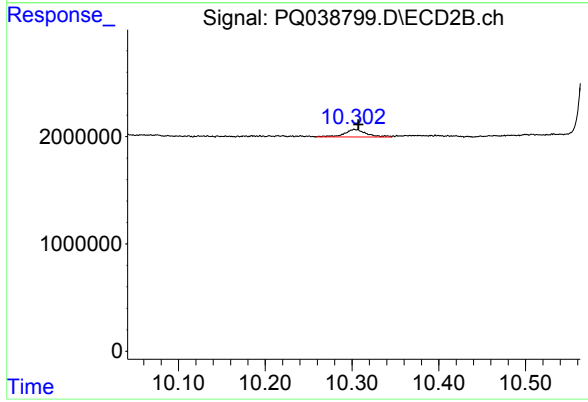




#45 AR-1268-5

R.T.: 11.775 min  
Delta R.T.: -0.002 min  
Response: 2736698  
Conc: 0.65 ng/ml

Instrument :  
ECD\_Q  
ClientSampleId :  
AR1254309



#45 AR-1268-5

R.T.: 10.303 min  
Delta R.T.: -0.004 min  
Response: 1234657  
Conc: 0.50 ng/ml