

Data Path : Z:\pestpcbsrv\HPCHEM1\ECD\_Q\Data\PQ040521\  
 Data File : PQ052853.D  
 Signal(s) : Signal #1: ECD1A.ch Signal #2: ECD2B.ch  
 Acq On : 05 Apr 2021 09:47  
 Operator : DD\AJ  
 Sample : AIBLK28  
 Misc :  
 ALS Vial : 2 Sample Multiplier: 1

Instrument :  
 ECD\_Q  
 ClientSampleId :  
 AIBLK28

Integration File signal 1: autoint1.e  
 Integration File signal 2: autoint2.e  
 Quant Time: Apr 06 01:57:45 2021  
 Quant Method : Z:\pestpcbsrv\HPCHEM1\ECD\_Q\Method\PQ031721CLP.M  
 Quant Title : GC EXTRACTABLES  
 QLast Update : Thu Mar 18 06:24:02 2021  
 Response via : Initial Calibration  
 Integrator: ChemStation

Volume Inj. : 1 µl  
 Signal #1 Phase : ZB MR1 Signal #2 Phase: ZB MR2  
 Signal #1 Info : 30Mx0.32mmx 0.5µm Signal #2 Info : 30M x 0.32mm x 0.25µm

Compound	RT#1	RT#2	Resp#1	Resp#2	ng/ml	ng/ml
-----						
System Monitoring Compounds						
1) SA Tetrachlo...	5.230	4.245	509.1E6	202.2E6	22.089	21.135
2) SA Decachlor...	11.421	9.583	733.7E6	316.4E6	29.671	31.969
Target Compounds						
9) L2 AR-1221-2	5.584	4.600	6394715	2645718	37.671	35.400
20) L4 AR-1242-5	7.521	0.000	1090720	0	1.628	N.D. #
24) L5 AR-1248-4	7.475	0.000	1247174	0	1.166	N.D. #
25) L5 AR-1248-5	7.521	0.000	1090720	0	1.026	N.D. #
26) L6 AR-1254-1	7.475	0.000	1247174	0	0.918	N.D. #
27) L6 AR-1254-2	7.672	0.000	2554250	0	1.197	N.D. #
28) L6 AR-1254-3	8.097	0.000	3994712	0	1.704	N.D. #
29) L6 AR-1254-4	8.352	7.159	1426356	639889	0.826	0.719
30) L6 AR-1254-5	0.000	7.663f	0	1219992	N.D.	1.020 #
31) L7 AR-1260-1	0.000	7.159f	0	639889	N.D.	1.107 #
32) L7 AR-1260-2	8.517	0.000	2219151	0	1.689	N.D. #
33) L7 AR-1260-3	0.000	7.480f	0	1704627	N.D.	2.586 #
34) L7 AR-1260-4	9.054f	7.923	1419544	3107399	1.242	5.510 #
35) L7 AR-1260-5	9.465	8.197	6126715	25009658	2.575	16.343 #
36) L8 AR-1262-1	0.000	7.663f	0	1219992	N.D.	2.422 #
37) L8 AR-1262-2	9.465	8.197	6126715	25009658	1.830	12.022 #
38) L8 AR-1262-3	9.789	8.493f	2811236	16143006	1.267	19.971 #
39) L8 AR-1262-4	0.000	8.493	0	16143006	N.D.	11.582 #
40) L8 AR-1262-5	0.000	8.972f	0	75831	N.D.	0.124 #
41) L9 AR-1268-1	9.789	8.493f	2811236	16143006	0.716	6.806 #
42) L9 AR-1268-2	0.000	8.493	0	16143006	N.D.	7.941 #
43) L9 AR-1268-3	10.136	8.731	2362251	3205070	0.740	1.802 #
44) L9 AR-1268-4	0.000	8.972f	0	75831	N.D.	0.114 #
45) L9 AR-1268-5	11.059	9.321	8332850	3279851	0.777	0.680
-----						

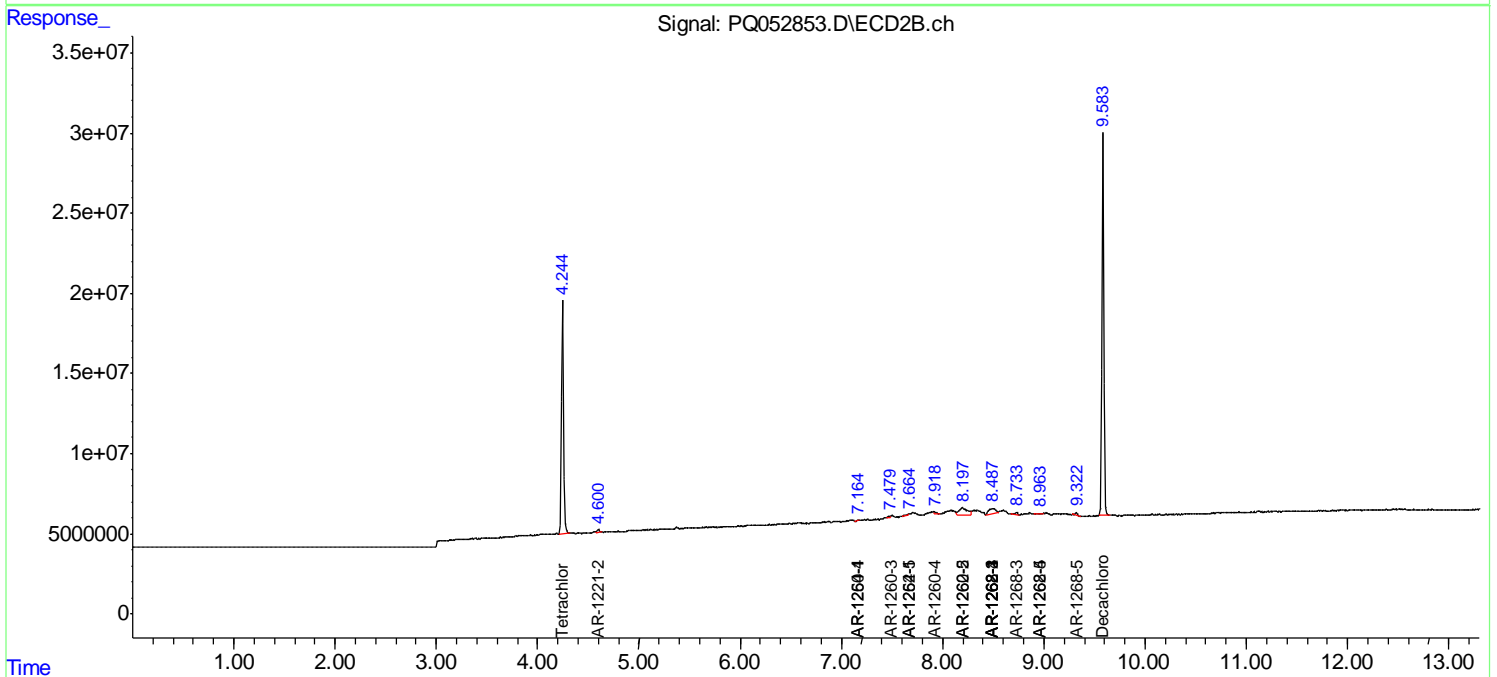
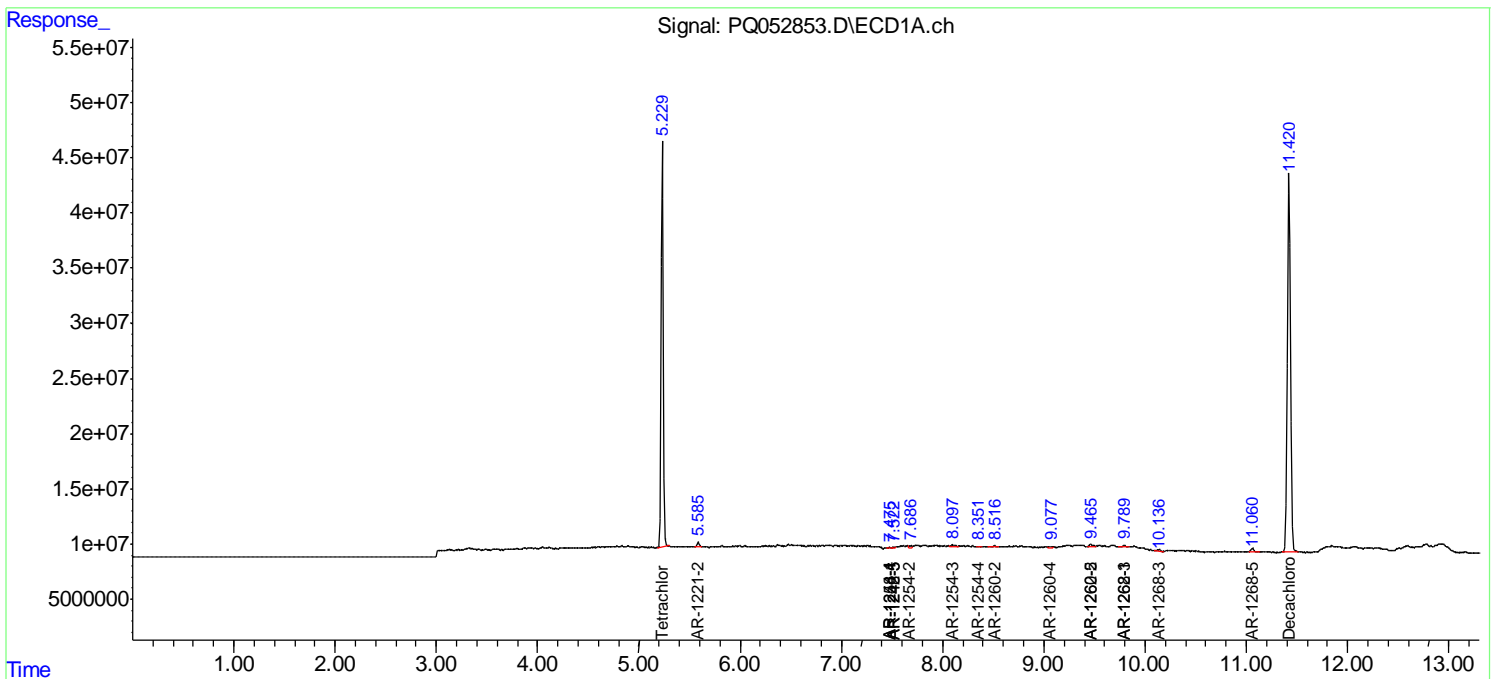
(f)=RT Delta > 1/2 Window (#)=Amounts differ by > 25% (m)=manual int.

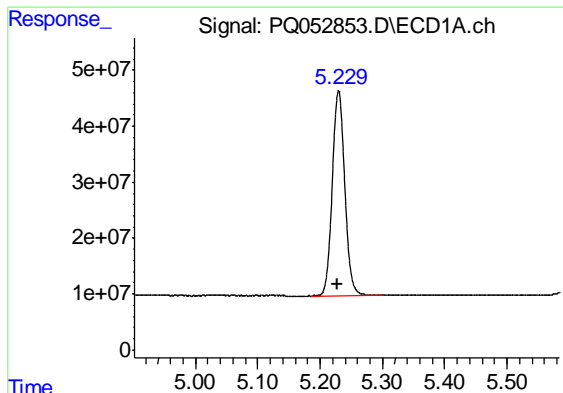
Data Path : Z:\pestpcbsrv\HPCHEM1\ECD\_Q\Data\PQ040521\  
Data File : PQ052853.D  
Signal(s) : Signal #1: ECD1A.ch Signal #2: ECD2B.ch  
Acq On : 05 Apr 2021 09:47  
Operator : DD\AJ  
Sample : AIBLK28  
Misc :  
ALS Vial : 2 Sample Multiplier: 1

Instrument :  
ECD\_Q  
Client Sampled :  
AIBLK28

Integration File signal 1: autoint1.e  
Integration File signal 2: autoint2.e  
Quant Time: Apr 06 01:57:45 2021  
Quant Method : Z:\pestpcbsrv\HPCHEM1\ECD\_Q\Method\PQ031721CLP.M  
Quant Title : GC EXTRACTABLES  
QLast Update : Thu Mar 18 06:24:02 2021  
Response via : Initial Calibration  
Integrator: ChemStation

Volume Inj. : 1 µl  
Signal #1 Phase : ZB MR1 Signal #2 Phase: ZB MR2  
Signal #1 Info : 30Mx0.32mmx 0.5µm Signal #2 Info : 30M x 0.32mm x 0.25µm

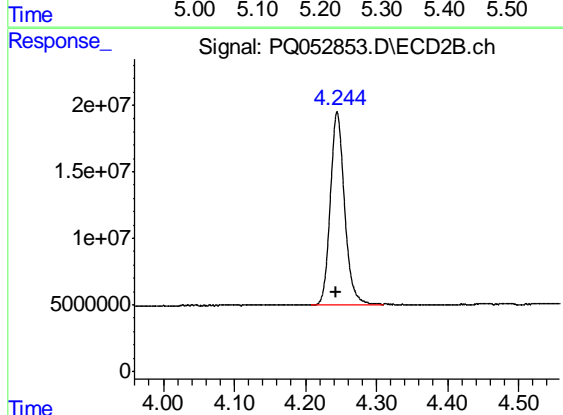




#1 Tetrachloro-m-xylene

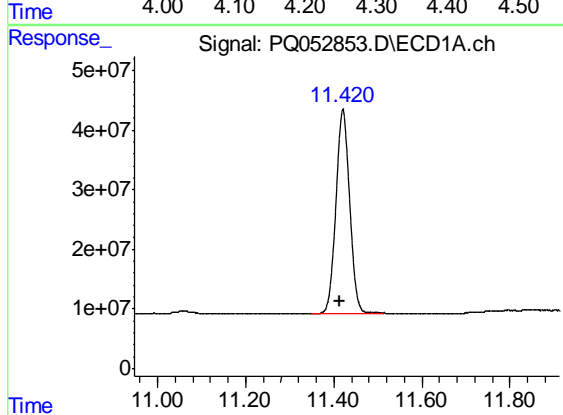
R.T.: 5.230 min  
 Delta R.T.: 0.003 min  
 Response: 509058330  
 Conc: 22.09 ng/ml

Instrument :  
 ECD\_Q  
 ClientSampled :  
 AIBLK28



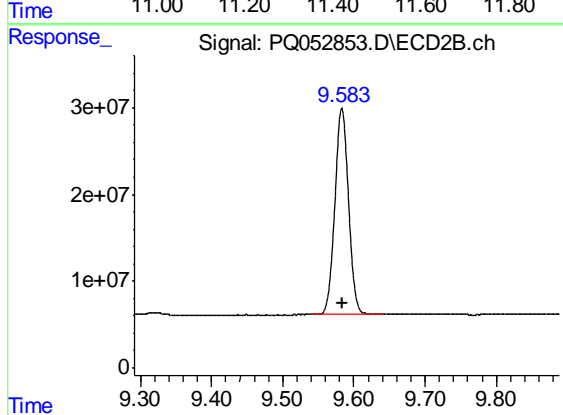
#1 Tetrachloro-m-xylene

R.T.: 4.245 min  
 Delta R.T.: 0.000 min  
 Response: 202152022  
 Conc: 21.14 ng/ml



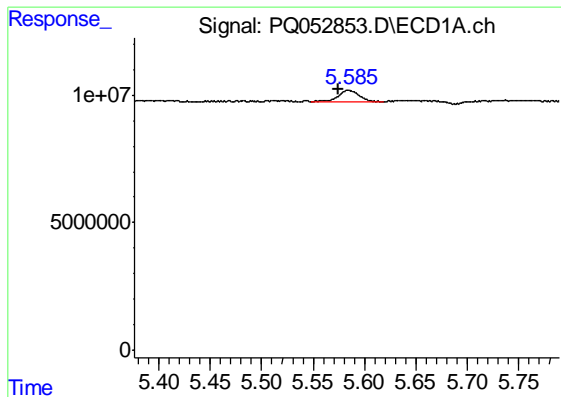
#2 Decachlorobiphenyl

R.T.: 11.421 min  
 Delta R.T.: 0.008 min  
 Response: 733713665  
 Conc: 29.67 ng/ml



#2 Decachlorobiphenyl

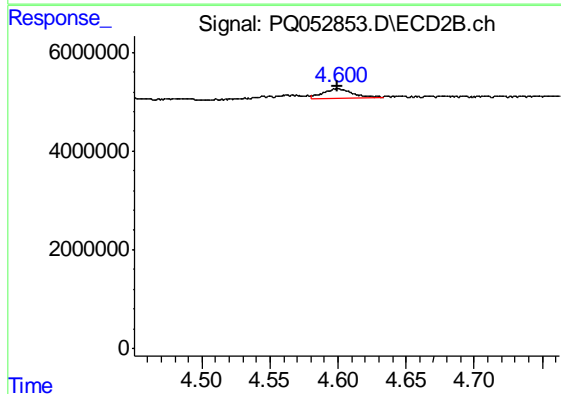
R.T.: 9.583 min  
 Delta R.T.: 0.000 min  
 Response: 316369043  
 Conc: 31.97 ng/ml



#9 AR-1221-2

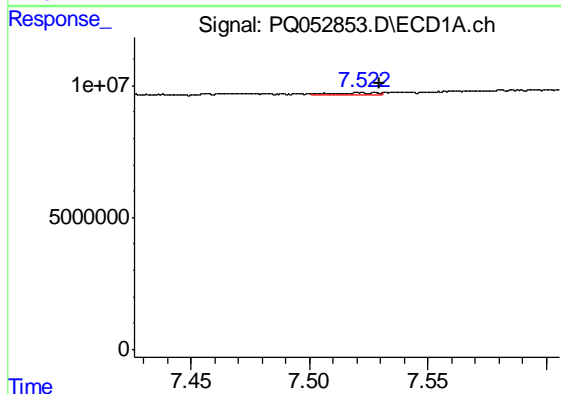
R.T.: 5.584 min  
 Delta R.T.: 0.009 min  
 Response: 6394715  
 Conc: 37.67 ng/ml

Instrument :  
 ECD\_Q  
 ClientSampleId :  
 AIBLK28



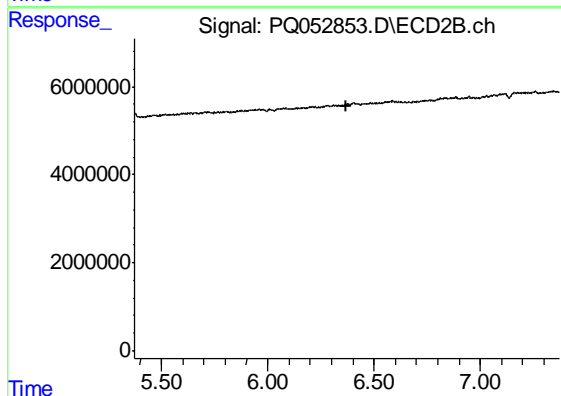
#9 AR-1221-2

R.T.: 4.600 min  
 Delta R.T.: 0.000 min  
 Response: 2645718  
 Conc: 35.40 ng/ml



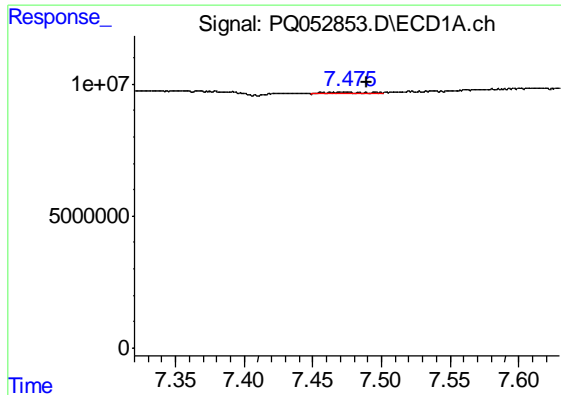
#20 AR-1242-5

R.T.: 7.521 min  
 Delta R.T.: -0.009 min  
 Response: 1090720  
 Conc: 1.63 ng/ml



#20 AR-1242-5

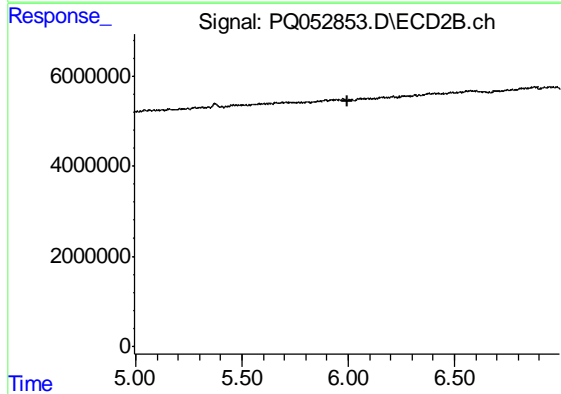
R.T.: 0.000 min  
 Exp R.T. : 6.373 min  
 Response: 0  
 Conc: N.D.



#24 AR-1248-4

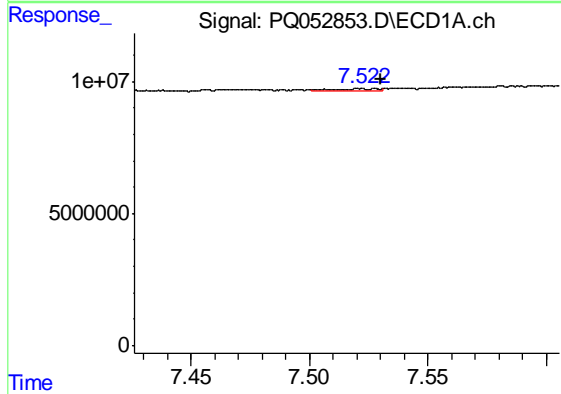
R.T.: 7.475 min  
 Delta R.T.: -0.015 min  
 Response: 1247174  
 Conc: 1.17 ng/ml

Instrument :  
 ECD\_Q  
 ClientSampleId :  
 AIBLK28



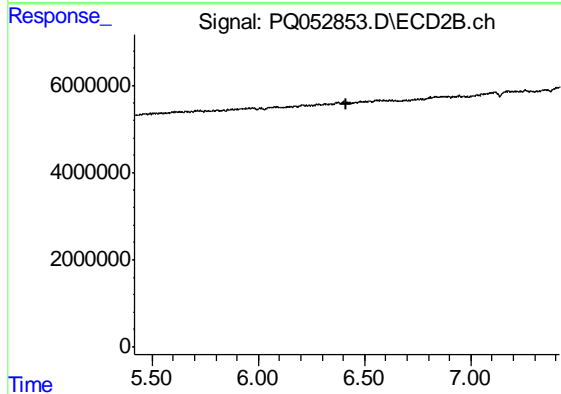
#24 AR-1248-4

R.T.: 0.000 min  
 Exp R.T. : 5.994 min  
 Response: 0  
 Conc: N.D.



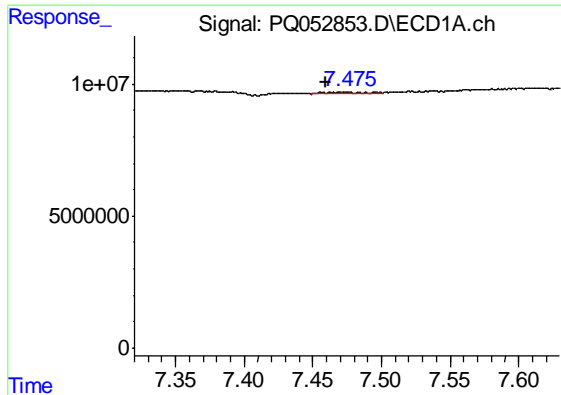
#25 AR-1248-5

R.T.: 7.521 min  
 Delta R.T.: -0.009 min  
 Response: 1090720  
 Conc: 1.03 ng/ml



#25 AR-1248-5

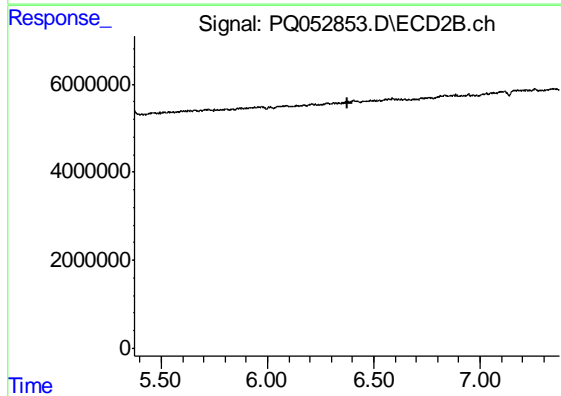
R.T.: 0.000 min  
 Exp R.T. : 6.417 min  
 Response: 0  
 Conc: N.D.



#26 AR-1254-1

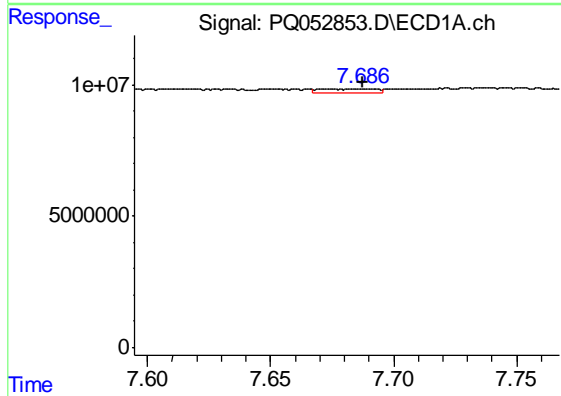
R.T.: 7.475 min  
 Delta R.T.: 0.015 min  
 Response: 1247174  
 Conc: 0.92 ng/ml

Instrument :  
 ECD\_Q  
 ClientSampleId :  
 AIBLK28



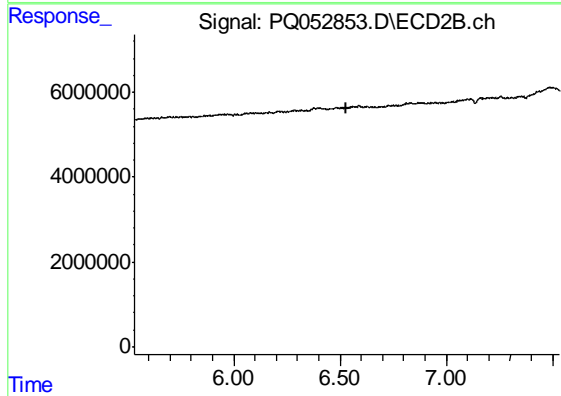
#26 AR-1254-1

R.T.: 0.000 min  
 Exp R.T. : 6.374 min  
 Response: 0  
 Conc: N.D.



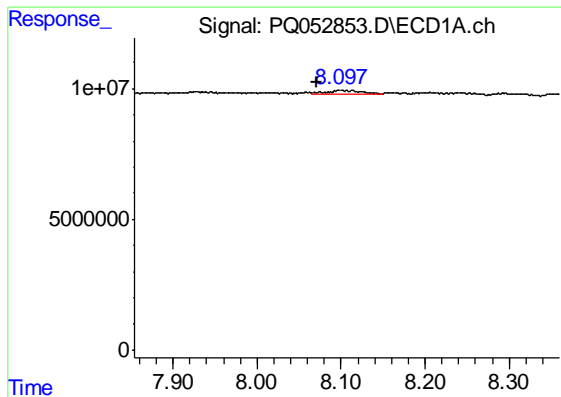
#27 AR-1254-2

R.T.: 7.672 min  
 Delta R.T.: -0.016 min  
 Response: 2554250  
 Conc: 1.20 ng/ml



#27 AR-1254-2

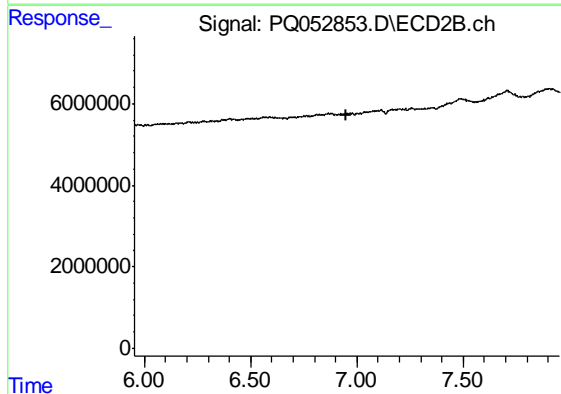
R.T.: 0.000 min  
 Exp R.T. : 6.532 min  
 Response: 0  
 Conc: N.D.



#28 AR-1254-3

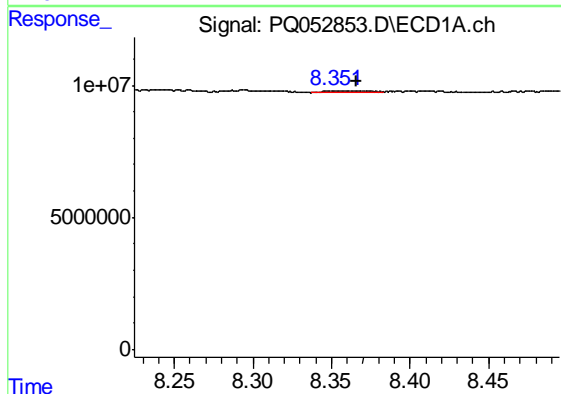
R.T.: 8.097 min  
 Delta R.T.: 0.026 min  
 Response: 3994712  
 Conc: 1.70 ng/ml

Instrument :  
 ECD\_Q  
 ClientSampled :  
 AIBLK28



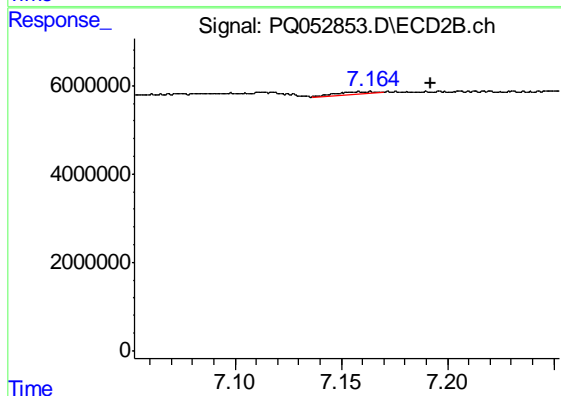
#28 AR-1254-3

R.T.: 0.000 min  
 Exp R.T. : 6.953 min  
 Response: 0  
 Conc: N.D.



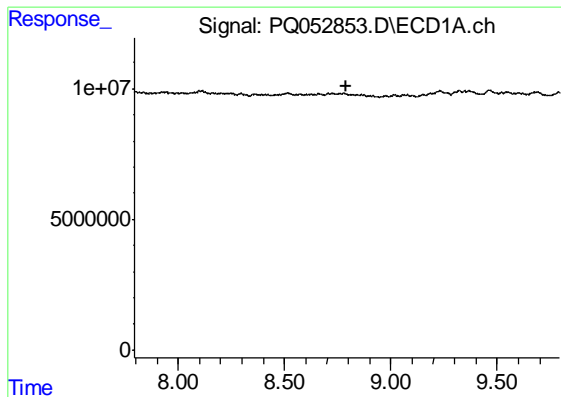
#29 AR-1254-4

R.T.: 8.352 min  
 Delta R.T.: -0.014 min  
 Response: 1426356  
 Conc: 0.83 ng/ml



#29 AR-1254-4

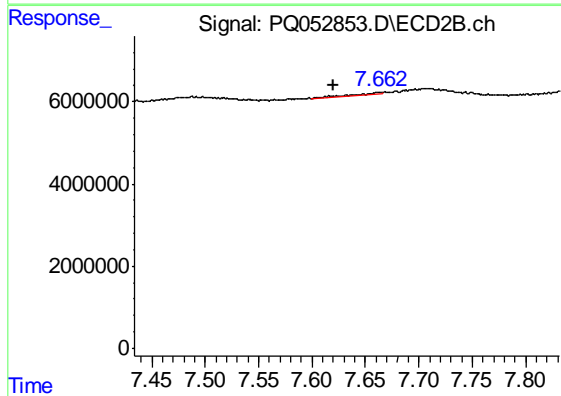
R.T.: 7.159 min  
 Delta R.T.: -0.033 min  
 Response: 639889  
 Conc: 0.72 ng/ml



#30 AR-1254-5

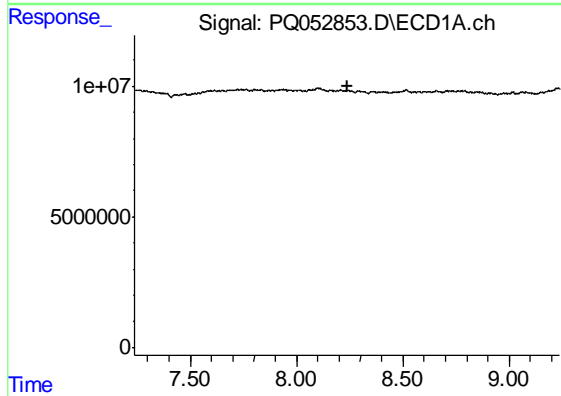
R.T.: 0.000 min  
 Exp R.T. : 8.793 min  
 Response: 0  
 Conc: N.D.

Instrument :  
 ECD\_Q  
 ClientSampleId :  
 AIBLK28



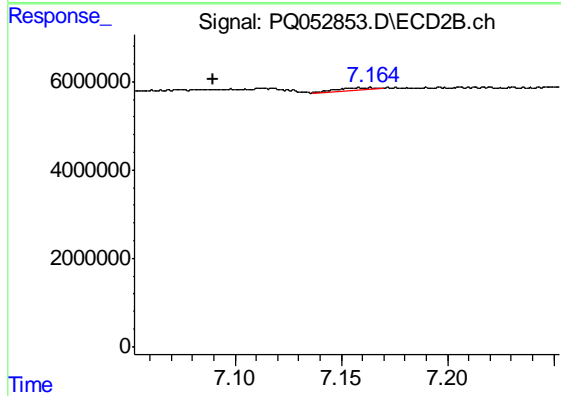
#30 AR-1254-5

R.T.: 7.663 min  
 Delta R.T.: 0.043 min  
 Response: 1219992  
 Conc: 1.02 ng/ml



#31 AR-1260-1

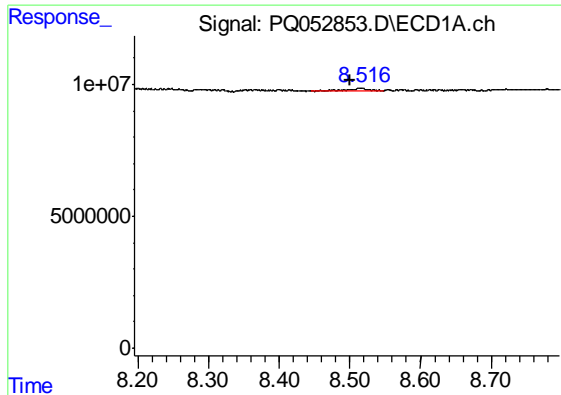
R.T.: 0.000 min  
 Exp R.T. : 8.237 min  
 Response: 0  
 Conc: N.D.



#31 AR-1260-1

R.T.: 7.159 min  
 Delta R.T.: 0.069 min  
 Response: 639889  
 Conc: 1.11 ng/ml

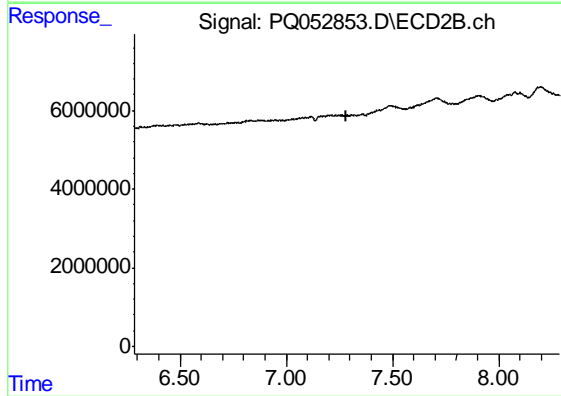




#32 AR-1260-2

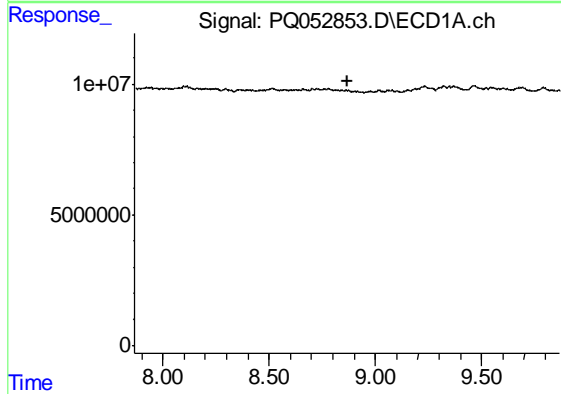
R.T.: 8.517 min  
 Delta R.T.: 0.017 min  
 Response: 2219151  
 Conc: 1.69 ng/ml

Instrument :  
 ECD\_Q  
 ClientSampleId :  
 AIBLK28



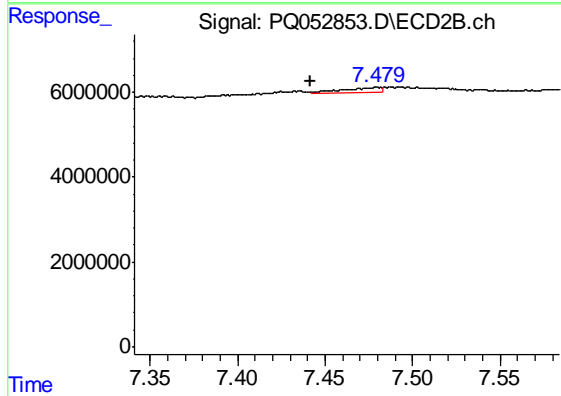
#32 AR-1260-2

R.T.: 0.000 min  
 Exp R.T. : 7.285 min  
 Response: 0  
 Conc: N.D.



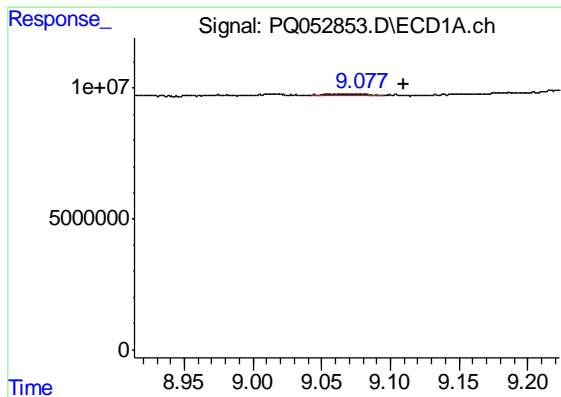
#33 AR-1260-3

R.T.: 0.000 min  
 Exp R.T. : 8.866 min  
 Response: 0  
 Conc: N.D.



#33 AR-1260-3

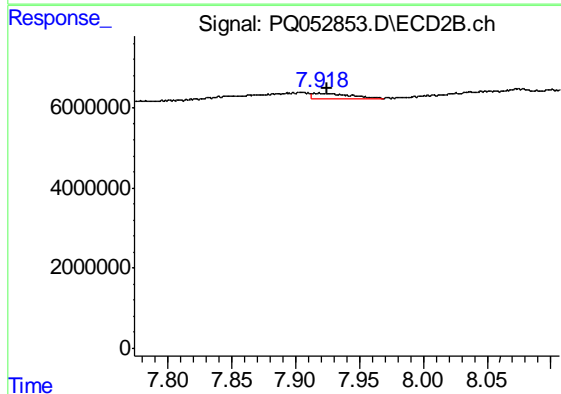
R.T.: 7.480 min  
 Delta R.T.: 0.038 min  
 Response: 1704627  
 Conc: 2.59 ng/ml



#34 AR-1260-4

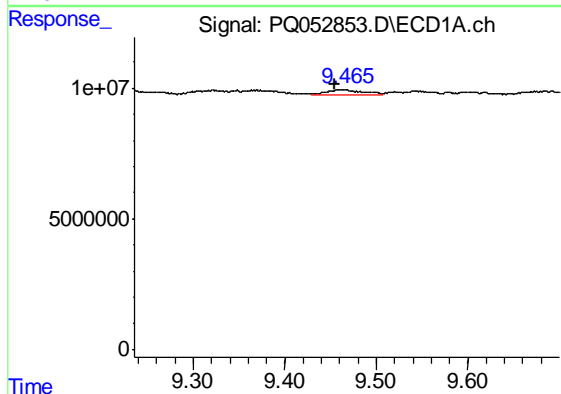
R.T.: 9.054 min  
 Delta R.T.: -0.056 min  
 Response: 1419544  
 Conc: 1.24 ng/ml

Instrument :  
 ECD\_Q  
 ClientSampleId :  
 AIBLK28



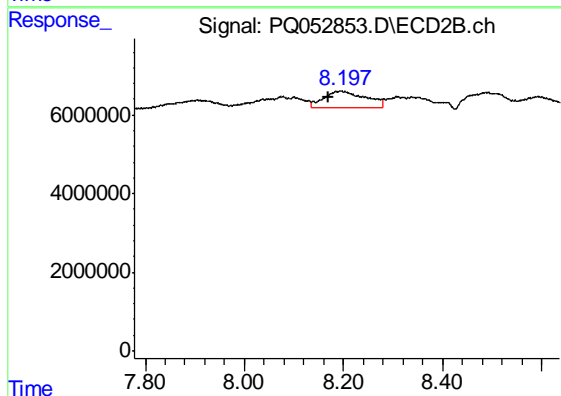
#34 AR-1260-4

R.T.: 7.923 min  
 Delta R.T.: -0.002 min  
 Response: 3107399  
 Conc: 5.51 ng/ml



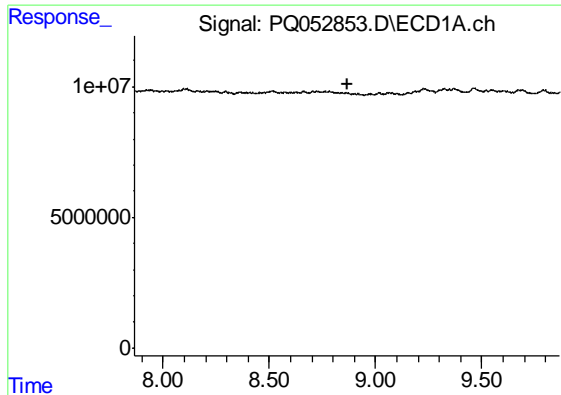
#35 AR-1260-5

R.T.: 9.465 min  
 Delta R.T.: 0.011 min  
 Response: 6126715  
 Conc: 2.58 ng/ml



#35 AR-1260-5

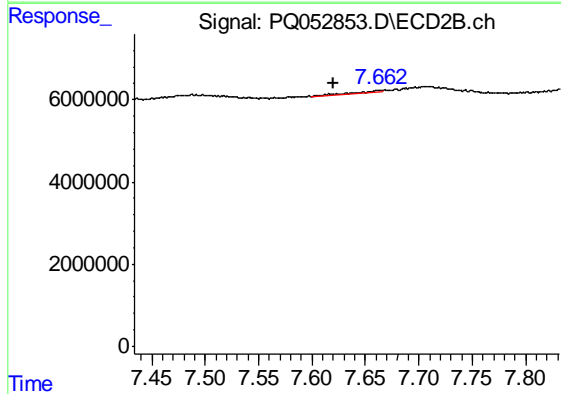
R.T.: 8.197 min  
 Delta R.T.: 0.026 min  
 Response: 25009658  
 Conc: 16.34 ng/ml



#36 AR-1262-1

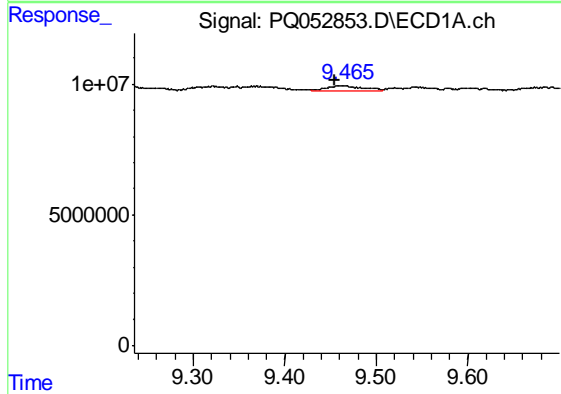
R.T.: 0.000 min  
 Exp R.T. : 8.865 min  
 Response: 0  
 Conc: N.D.

Instrument :  
 ECD\_Q  
 ClientSampled :  
 AIBLK28



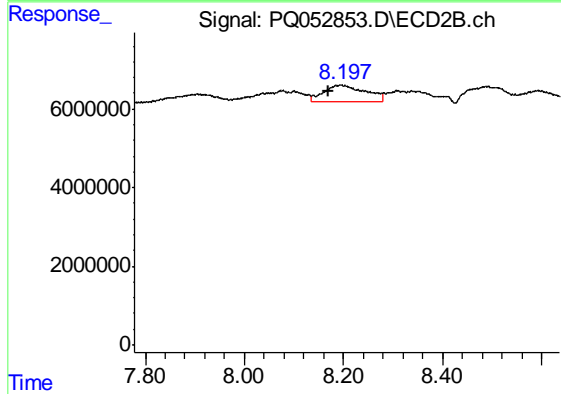
#36 AR-1262-1

R.T.: 7.663 min  
 Delta R.T.: 0.044 min  
 Response: 1219992  
 Conc: 2.42 ng/ml



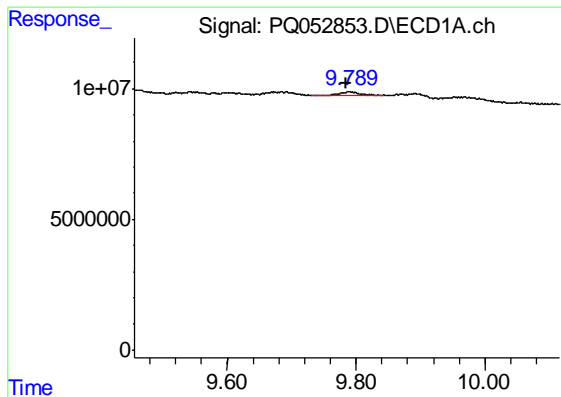
#37 AR-1262-2

R.T.: 9.465 min  
 Delta R.T.: 0.011 min  
 Response: 6126715  
 Conc: 1.83 ng/ml



#37 AR-1262-2

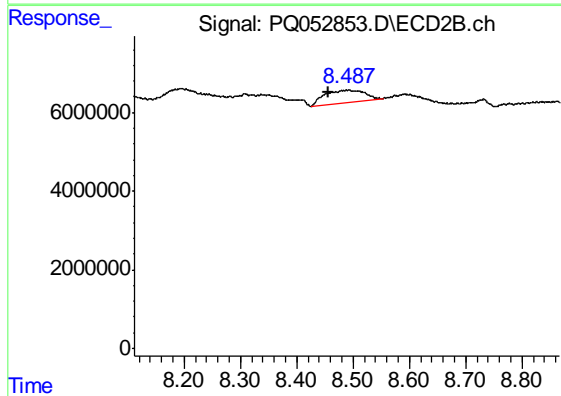
R.T.: 8.197 min  
 Delta R.T.: 0.027 min  
 Response: 25009658  
 Conc: 12.02 ng/ml



#38 AR-1262-3

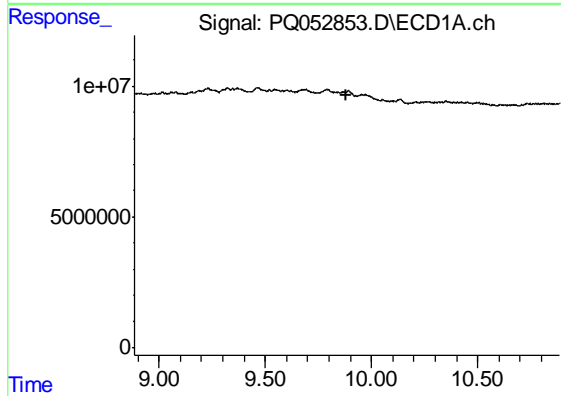
R.T.: 9.789 min  
 Delta R.T.: 0.005 min  
 Response: 2811236  
 Conc: 1.27 ng/ml

Instrument :  
 ECD\_Q  
 ClientSampled :  
 AIBLK28



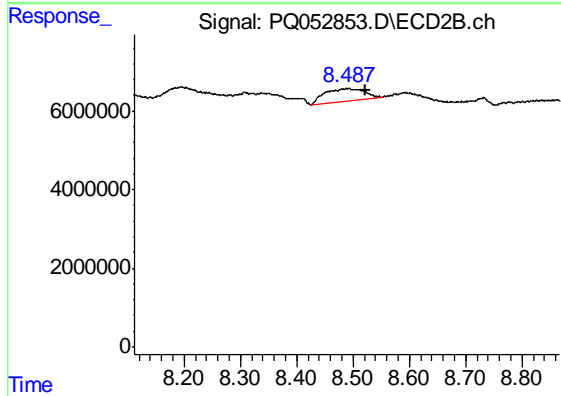
#38 AR-1262-3

R.T.: 8.493 min  
 Delta R.T.: 0.036 min  
 Response: 16143006  
 Conc: 19.97 ng/ml



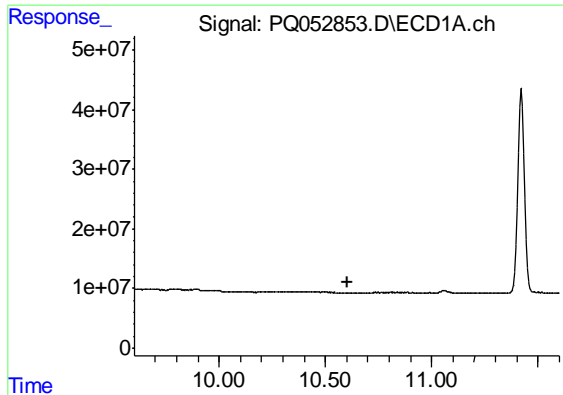
#39 AR-1262-4

R.T.: 0.000 min  
 Exp R.T. : 9.884 min  
 Response: 0  
 Conc: N.D.



#39 AR-1262-4

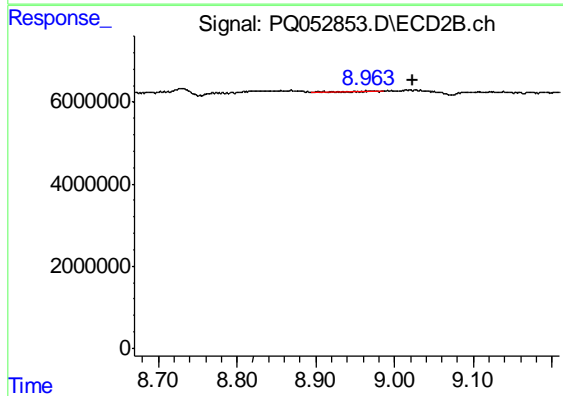
R.T.: 8.493 min  
 Delta R.T.: -0.028 min  
 Response: 16143006  
 Conc: 11.58 ng/ml



#40 AR-1262-5

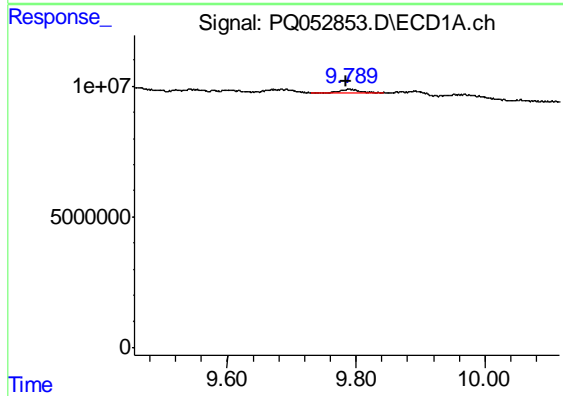
R.T.: 0.000 min  
 Exp R.T. : 10.601 min  
 Response: 0  
 Conc: N.D.

Instrument :  
 ECD\_Q  
 ClientSampleId :  
 AIBLK28



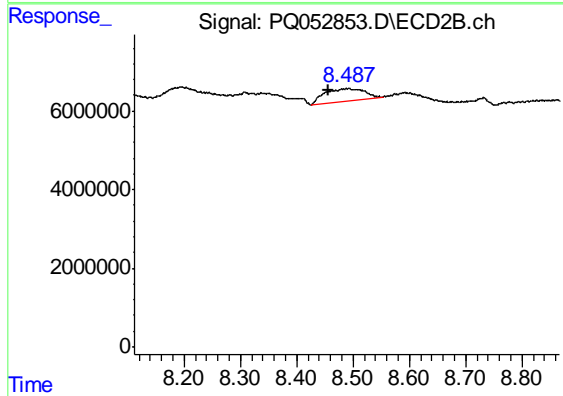
#40 AR-1262-5

R.T.: 8.972 min  
 Delta R.T.: -0.051 min  
 Response: 75831  
 Conc: 0.12 ng/ml



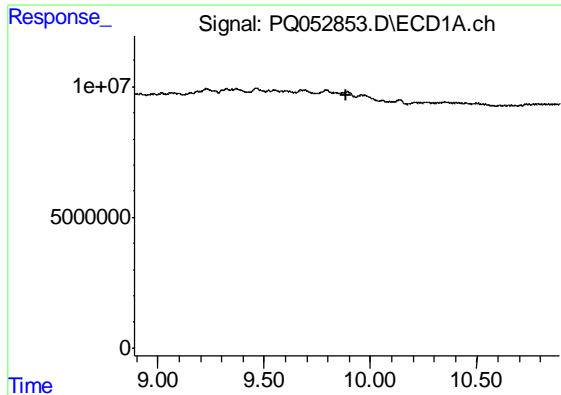
#41 AR-1268-1

R.T.: 9.789 min  
 Delta R.T.: 0.005 min  
 Response: 2811236  
 Conc: 0.72 ng/ml



#41 AR-1268-1

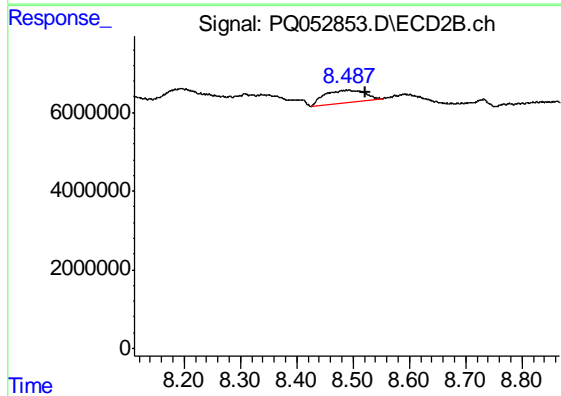
R.T.: 8.493 min  
 Delta R.T.: 0.036 min  
 Response: 16143006  
 Conc: 6.81 ng/ml



#42 AR-1268-2

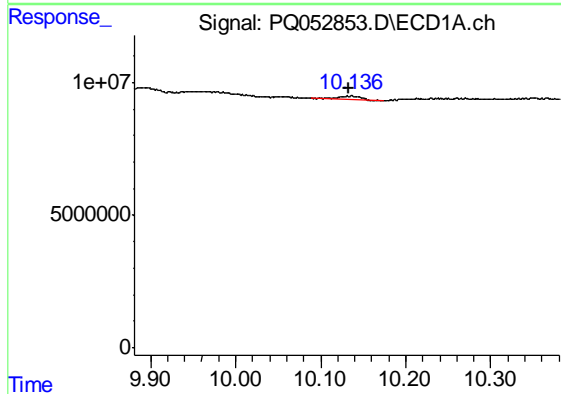
R.T.: 0.000 min  
 Exp R.T. : 9.889 min  
 Response: 0  
 Conc: N.D.

Instrument :  
 ECD\_Q  
 ClientSampleId :  
 AIBLK28



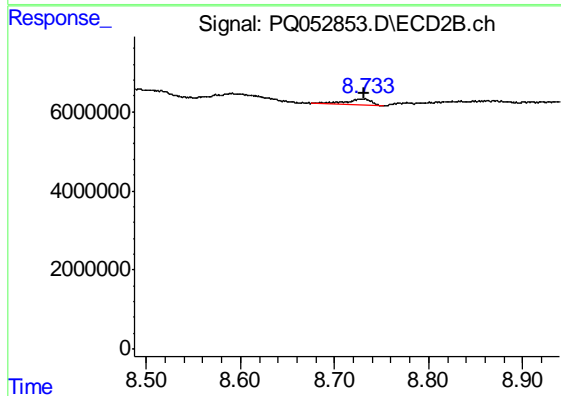
#42 AR-1268-2

R.T.: 8.493 min  
 Delta R.T.: -0.030 min  
 Response: 16143006  
 Conc: 7.94 ng/ml



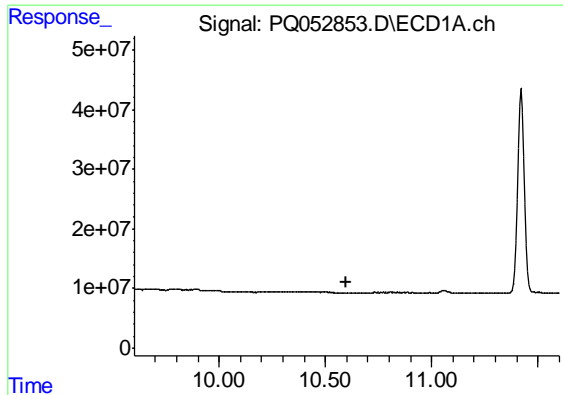
#43 AR-1268-3

R.T.: 10.136 min  
 Delta R.T.: 0.004 min  
 Response: 2362251  
 Conc: 0.74 ng/ml



#43 AR-1268-3

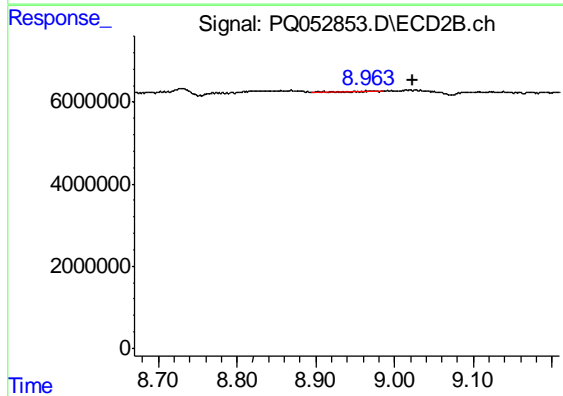
R.T.: 8.731 min  
 Delta R.T.: 0.000 min  
 Response: 3205070  
 Conc: 1.80 ng/ml



#44 AR-1268-4

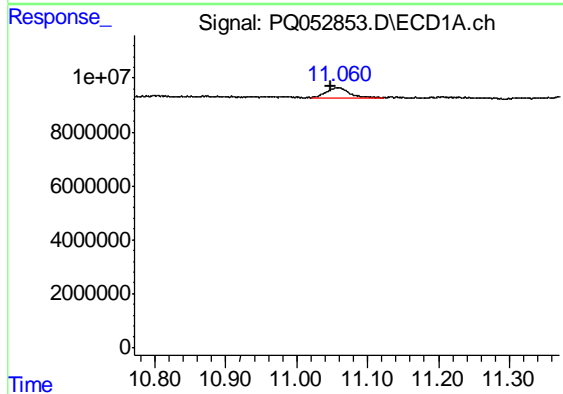
R.T.: 0.000 min  
 Exp R.T. : 10.601 min  
 Response: 0  
 Conc: N.D.

Instrument :  
 ECD\_Q  
 ClientSampleId :  
 AIBLK28



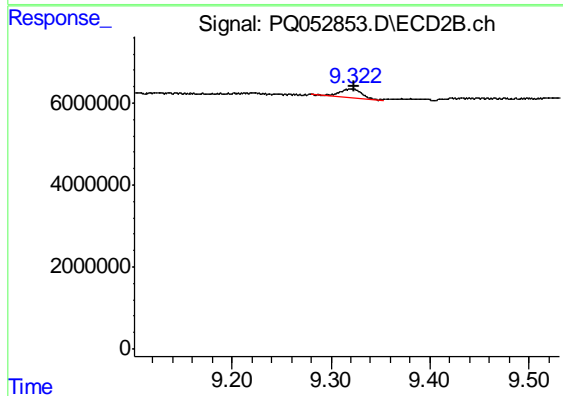
#44 AR-1268-4

R.T.: 8.972 min  
 Delta R.T.: -0.051 min  
 Response: 75831  
 Conc: 0.11 ng/ml



#45 AR-1268-5

R.T.: 11.059 min  
 Delta R.T.: 0.010 min  
 Response: 8332850  
 Conc: 0.78 ng/ml



#45 AR-1268-5

R.T.: 9.321 min  
 Delta R.T.: -0.002 min  
 Response: 3279851  
 Conc: 0.68 ng/ml