

Data Path : Z:\pestpcbsrv\HPCHEM1\ECD_Q\Data\PQ040621\
 Data File : PQ052868.D
 Signal(s) : Signal #1: ECD1A.ch Signal #2: ECD2B.ch
 Acq On : 06 Apr 2021 15:00
 Operator : DD\AJ
 Sample : AIBLK31
 Misc :
 ALS Vial : 2 Sample Multiplier: 1

Instrument :
 ECD_Q
 ClientSampleId :
 AIBLK31

Integration File signal 1: autoint1.e
 Integration File signal 2: autoint2.e
 Quant Time: Apr 07 06:50:22 2021
 Quant Method : Z:\pestpcbsrv\HPCHEM1\ECD_Q\Method\PQ031721CLP.M
 Quant Title : GC EXTRACTABLES
 QLast Update : Thu Mar 18 06:24:02 2021
 Response via : Initial Calibration
 Integrator: ChemStation

Volume Inj. : 1 µl
 Signal #1 Phase : ZB MR1 Signal #2 Phase: ZB MR2
 Signal #1 Info : 30Mx0.32mmx 0.5µm Signal #2 Info : 30M x 0.32mm x 0.25µm

Compound	RT#1	RT#2	Resp#1	Resp#2	ng/ml	ng/ml

System Monitoring Compounds						
1) SA Tetrachlo...	5.239	4.242	537.4E6	222.6E6	23.321	23.269
2) SA Decachlor...	11.443	9.590	811.0E6	356.8E6	32.795	36.059
Target Compounds						
3) L1 AR-1016-1	6.481f	0.000	2834689	0	3.304	N.D. #
7) L1 AR-1016-5	7.123f	0.000	1976859	0	3.244	N.D. #
9) L2 AR-1221-2	5.595	4.596	6164990	2465406	36.318	32.987
10) L2 AR-1221-3	5.595f	0.000	6164990	0	10.685	N.D. #
11) L3 AR-1232-1	5.595f	0.000	6164990	0	13.146	N.D. #
16) L4 AR-1242-1	6.481f	0.000	2834689	0	3.556	N.D. #
20) L4 AR-1242-5	7.542	6.397	15793395	3842345	23.573	11.059 #
21) L5 AR-1248-1	6.481f	0.000	2834689	0	5.165	N.D. #
23) L5 AR-1248-3	7.123f	0.000	1976859	0	2.217	N.D. #
24) L5 AR-1248-4	7.481	0.000	67031809	0	62.662	N.D. #
25) L5 AR-1248-5	7.542	6.397	15793395	3842345	14.860	8.611 #
26) L6 AR-1254-1	7.481	6.397	67031809	3842345	49.330	4.284 #
28) L6 AR-1254-3	8.114f	6.980	41355810	48357896	17.644	37.286 #
29) L6 AR-1254-4	8.364	7.190	22798451	6482530	13.198	7.285 #
31) L7 AR-1260-1	0.000	7.074	0	2202683	N.D.	3.810 #
32) L7 AR-1260-2	8.525	7.261	3148569	5859321	2.396	7.346 #
38) L8 AR-1262-3	9.807	8.464	2879395	7580394	1.298	9.378 #
39) L8 AR-1262-4	0.000	8.524	0	2437281	N.D.	1.749 #
41) L9 AR-1268-1	9.807	8.464	2879395	7580394	0.734	3.196 #
42) L9 AR-1268-2	0.000	8.524	0	2437281	N.D.	1.199 #
43) L9 AR-1268-3	10.152	8.736	2581714	3377068	0.808	1.898 #
45) L9 AR-1268-5	11.077	9.329	8984610	3669656	0.838	0.761

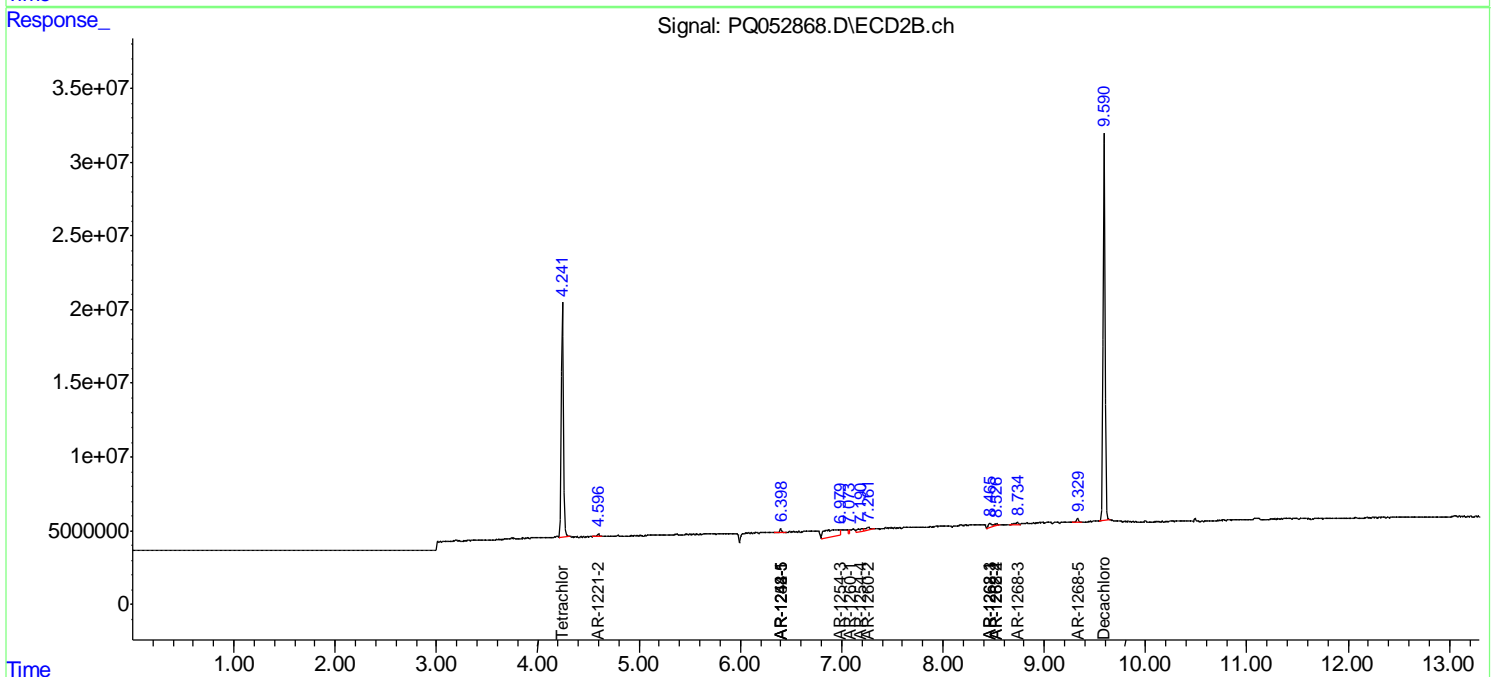
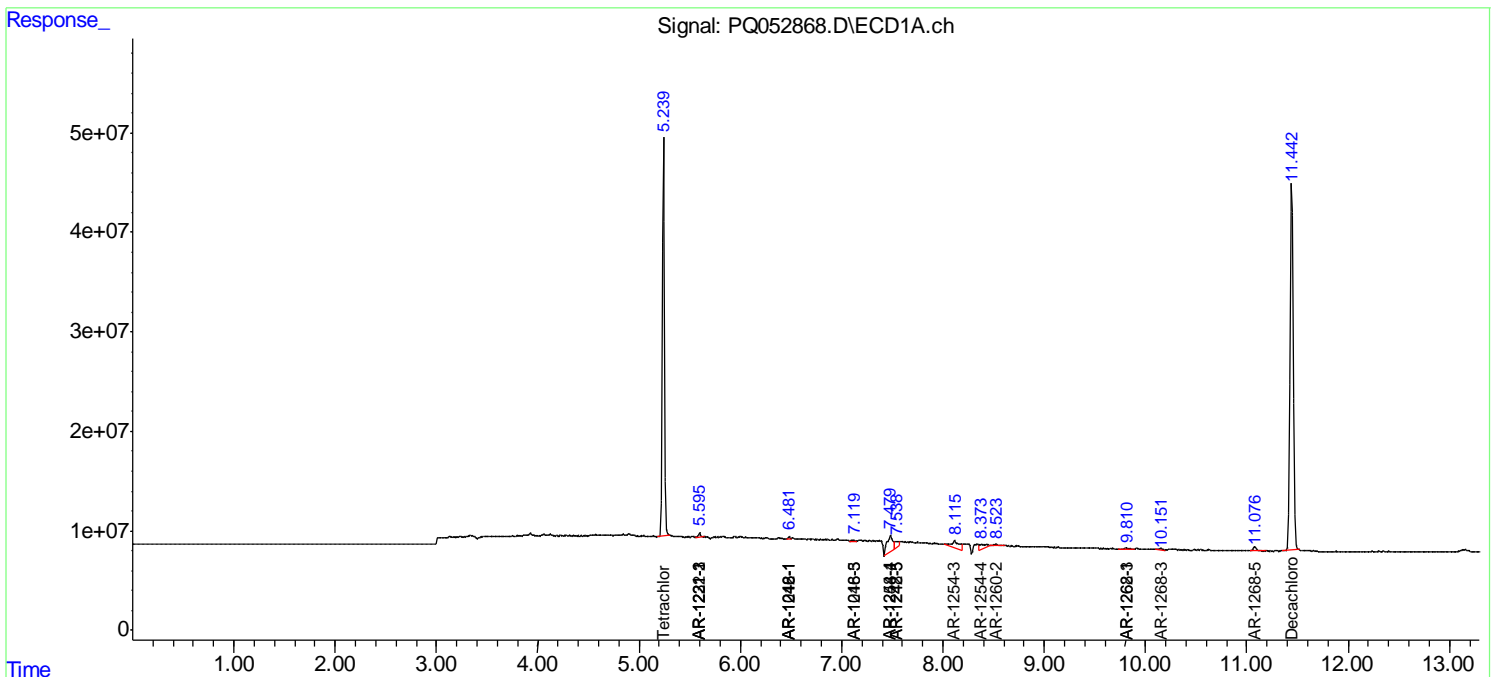
(f)=RT Delta > 1/2 Window (#)=Amounts differ by > 25% (m)=manual int.

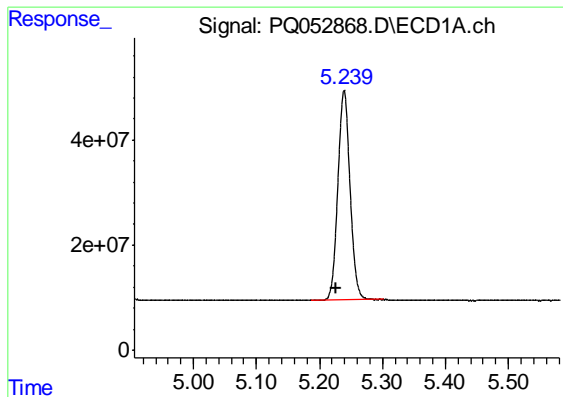
Data Path : Z:\pestpcbsrv\HPCHEM1\ECD_Q\Data\PQ040621\
 Data File : PQ052868.D
 Signal(s) : Signal #1: ECD1A.ch Signal #2: ECD2B.ch
 Acq On : 06 Apr 2021 15:00
 Operator : DD\AJ
 Sample : AIBLK31
 Misc :
 ALS Vial : 2 Sample Multiplier: 1

Instrument :
 ECD_Q
 ClientSampled :
 AIBLK31

Integration File signal 1: autoint1.e
 Integration File signal 2: autoint2.e
 Quant Time: Apr 07 06:50:22 2021
 Quant Method : Z:\pestpcbsrv\HPCHEM1\ECD_Q\Method\PQ031721CLP.M
 Quant Title : GC EXTRACTABLES
 QLast Update : Thu Mar 18 06:24:02 2021
 Response via : Initial Calibration
 Integrator: ChemStation

Volume Inj. : 1 µl
 Signal #1 Phase : ZB MR1 Signal #2 Phase: ZB MR2
 Signal #1 Info : 30Mx0.32mmx 0.5µm Signal #2 Info : 30M x 0.32mm x 0.25µm

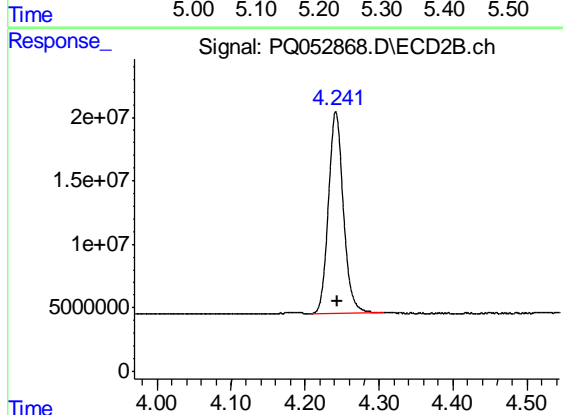




#1 Tetrachloro-m-xylene

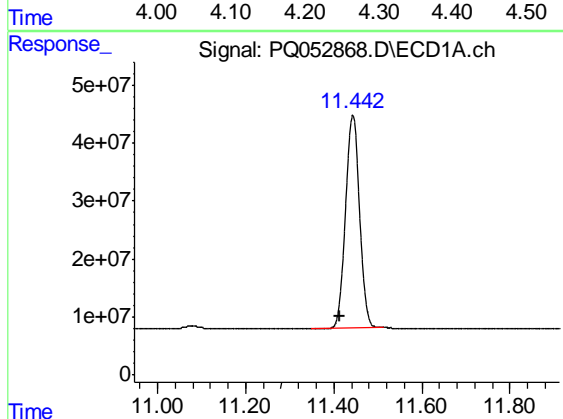
R.T.: 5.239 min
Delta R.T.: 0.012 min
Response: 537446700
Conc: 23.32 ng/ml

Instrument :
ECD_Q
ClientSampleId :
AIBLK31



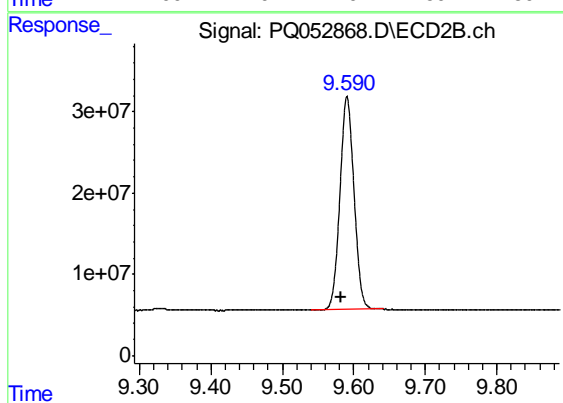
#1 Tetrachloro-m-xylene

R.T.: 4.242 min
Delta R.T.: -0.002 min
Response: 222554078
Conc: 23.27 ng/ml



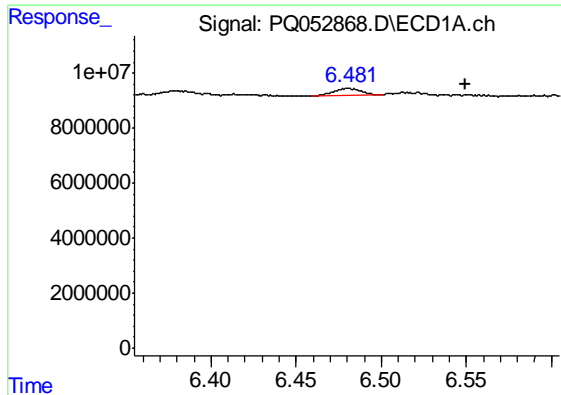
#2 Decachlorobiphenyl

R.T.: 11.443 min
Delta R.T.: 0.030 min
Response: 810977777
Conc: 32.80 ng/ml



#2 Decachlorobiphenyl

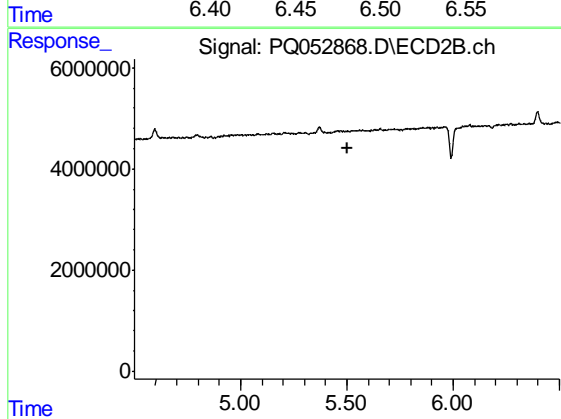
R.T.: 9.590 min
Delta R.T.: 0.007 min
Response: 356848225
Conc: 36.06 ng/ml



#3 AR-1016-1

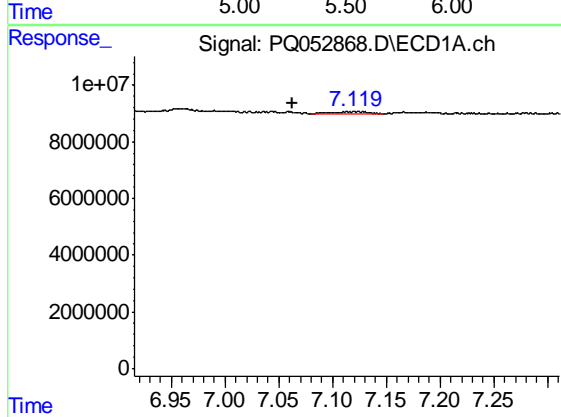
R.T.: 6.481 min
 Delta R.T.: -0.069 min
 Response: 2834689
 Conc: 3.30 ng/ml

Instrument :
 ECD_Q
 ClientSampled :
 AIBLK31



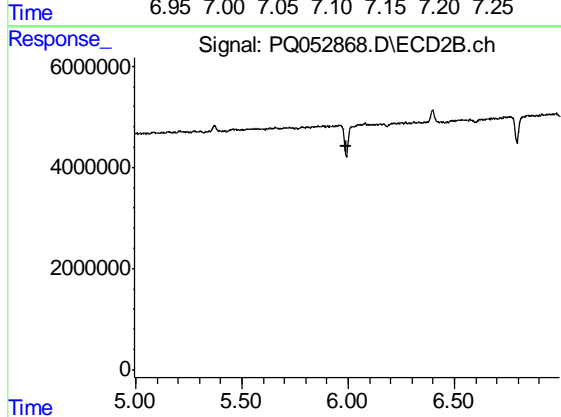
#3 AR-1016-1

R.T.: 0.000 min
 Exp R.T. : 5.501 min
 Response: 0
 Conc: N.D.



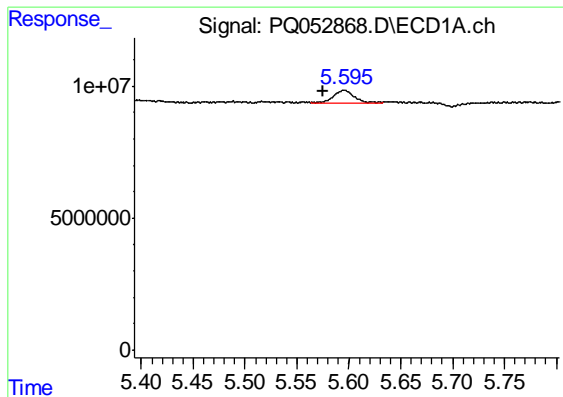
#7 AR-1016-5

R.T.: 7.123 min
 Delta R.T.: 0.061 min
 Response: 1976859
 Conc: 3.24 ng/ml



#7 AR-1016-5

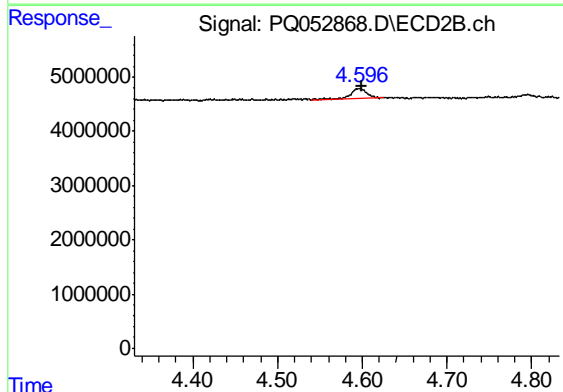
R.T.: 0.000 min
 Exp R.T. : 5.994 min
 Response: 0
 Conc: N.D.



#9 AR-1221-2

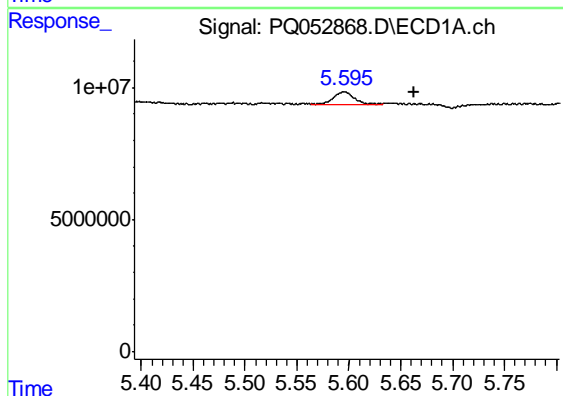
R.T.: 5.595 min
 Delta R.T.: 0.020 min
 Response: 6164990
 Conc: 36.32 ng/ml

Instrument :
 ECD_Q
 ClientSampleId :
 AIBLK31



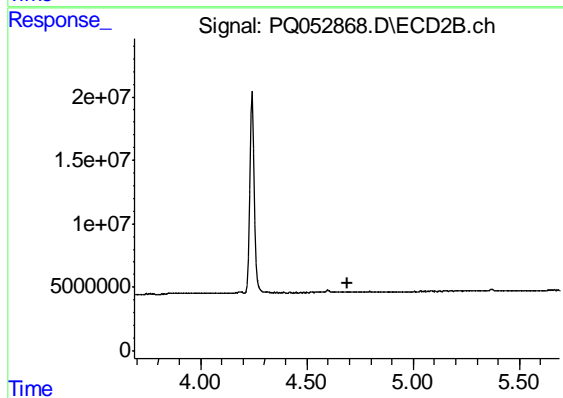
#9 AR-1221-2

R.T.: 4.596 min
 Delta R.T.: -0.003 min
 Response: 2465406
 Conc: 32.99 ng/ml



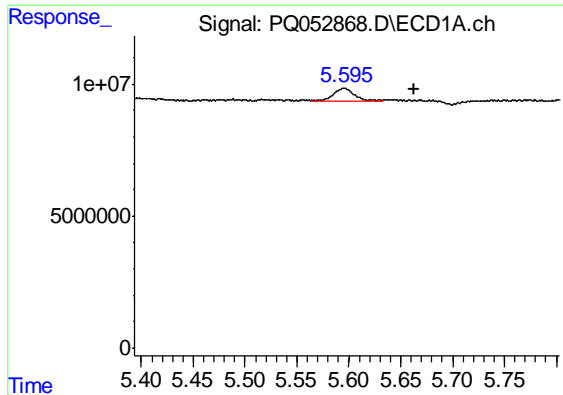
#10 AR-1221-3

R.T.: 5.595 min
 Delta R.T.: -0.068 min
 Response: 6164990
 Conc: 10.68 ng/ml



#10 AR-1221-3

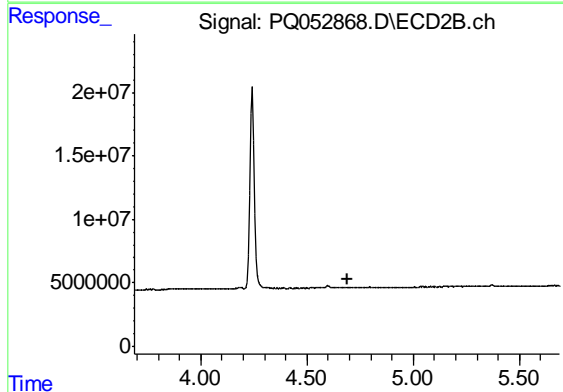
R.T.: 0.000 min
 Exp R.T. : 4.689 min
 Response: 0
 Conc: N.D.



#11 AR-1232-1

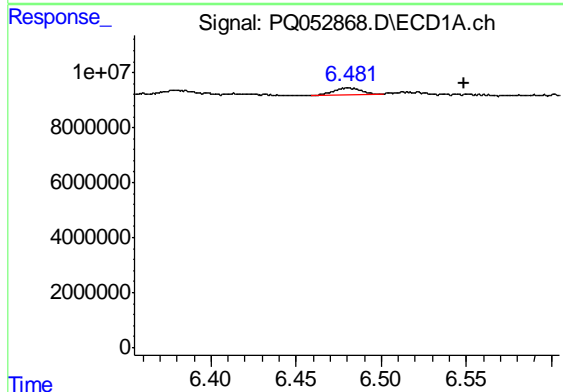
R.T.: 5.595 min
 Delta R.T.: -0.068 min
 Response: 6164990
 Conc: 13.15 ng/ml

Instrument :
 ECD_Q
 ClientSampleId :
 AIBLK31



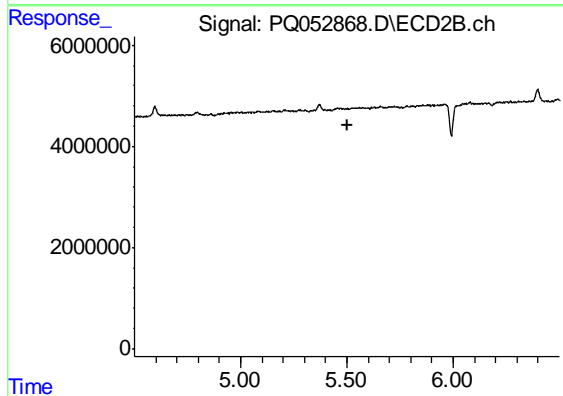
#11 AR-1232-1

R.T.: 0.000 min
 Exp R.T. : 4.688 min
 Response: 0
 Conc: N.D.



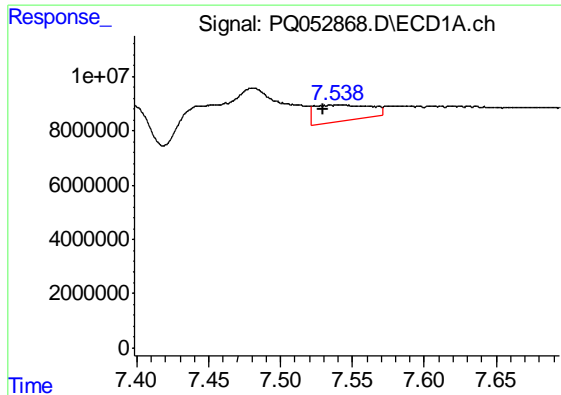
#16 AR-1242-1

R.T.: 6.481 min
 Delta R.T.: -0.068 min
 Response: 2834689
 Conc: 3.56 ng/ml



#16 AR-1242-1

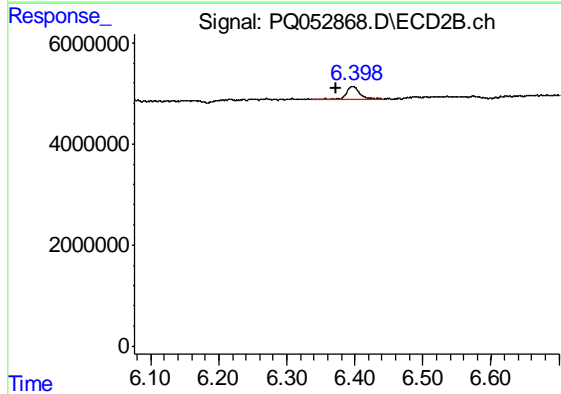
R.T.: 0.000 min
 Exp R.T. : 5.500 min
 Response: 0
 Conc: N.D.



#20 AR-1242-5

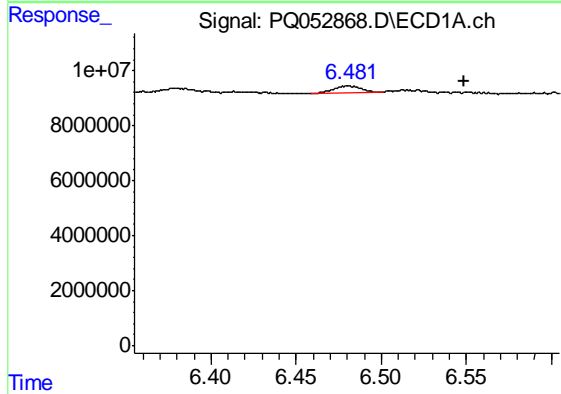
R.T.: 7.542 min
 Delta R.T.: 0.012 min
 Response: 15793395
 Conc: 23.57 ng/ml

Instrument :
 ECD_Q
 ClientSampleId :
 AIBLK31



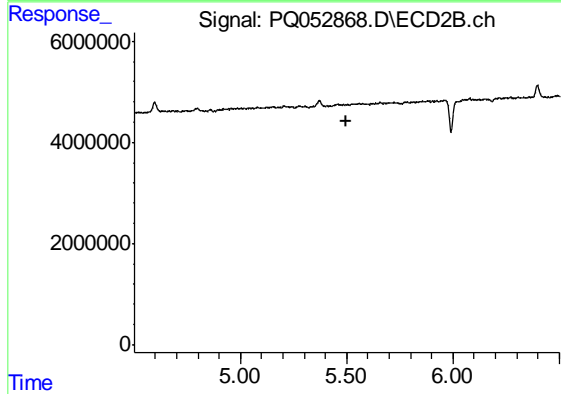
#20 AR-1242-5

R.T.: 6.397 min
 Delta R.T.: 0.024 min
 Response: 3842345
 Conc: 11.06 ng/ml



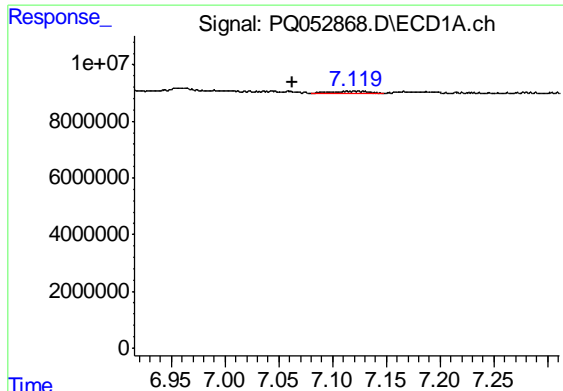
#21 AR-1248-1

R.T.: 6.481 min
 Delta R.T.: -0.068 min
 Response: 2834689
 Conc: 5.17 ng/ml



#21 AR-1248-1

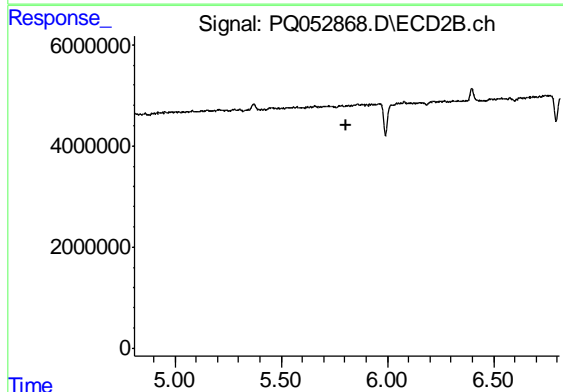
R.T.: 0.000 min
 Exp R.T. : 5.501 min
 Response: 0
 Conc: N.D.



#23 AR-1248-3

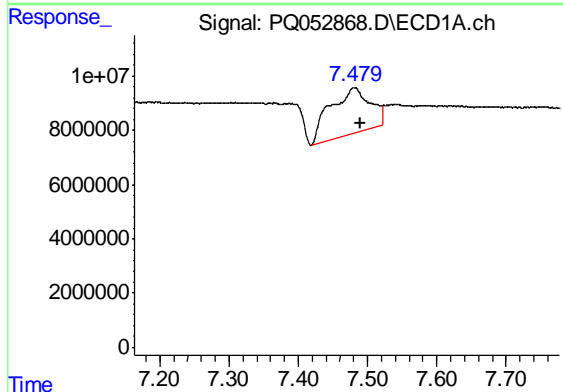
R.T.: 7.123 min
 Delta R.T.: 0.061 min
 Response: 1976859
 Conc: 2.22 ng/ml

Instrument :
 ECD_Q
 ClientSampleId :
 AIBLK31



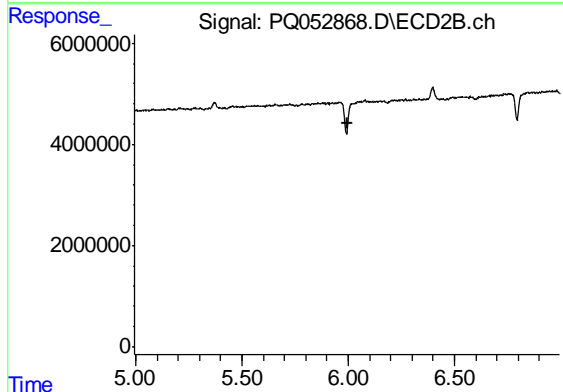
#23 AR-1248-3

R.T.: 0.000 min
 Exp R.T. : 5.809 min
 Response: 0
 Conc: N.D.



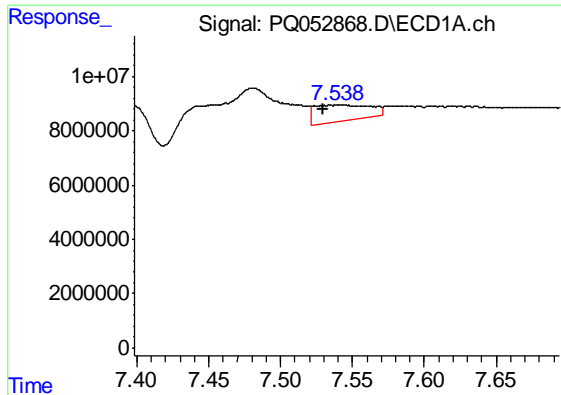
#24 AR-1248-4

R.T.: 7.481 min
 Delta R.T.: -0.009 min
 Response: 67031809
 Conc: 62.66 ng/ml



#24 AR-1248-4

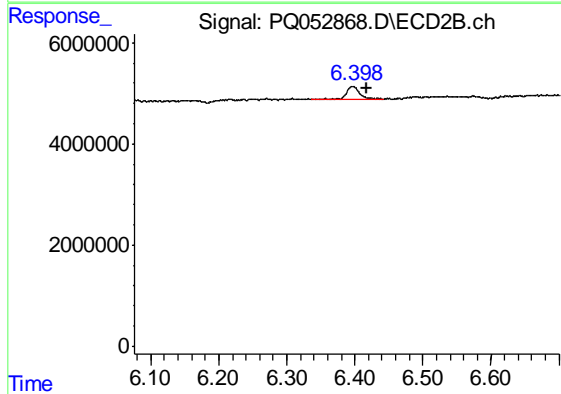
R.T.: 0.000 min
 Exp R.T. : 5.994 min
 Response: 0
 Conc: N.D.



#25 AR-1248-5

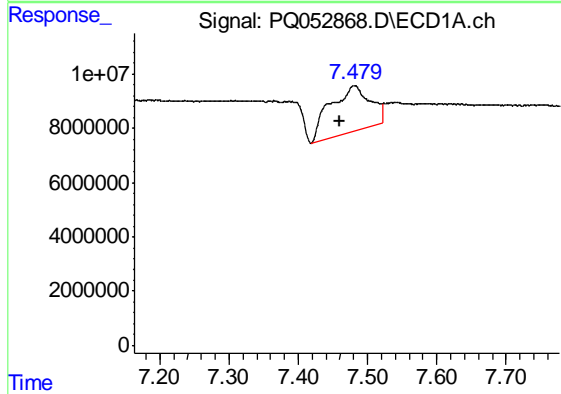
R.T.: 7.542 min
 Delta R.T.: 0.012 min
 Response: 15793395
 Conc: 14.86 ng/ml

Instrument :
 ECD_Q
 ClientSampleId :
 AIBLK31



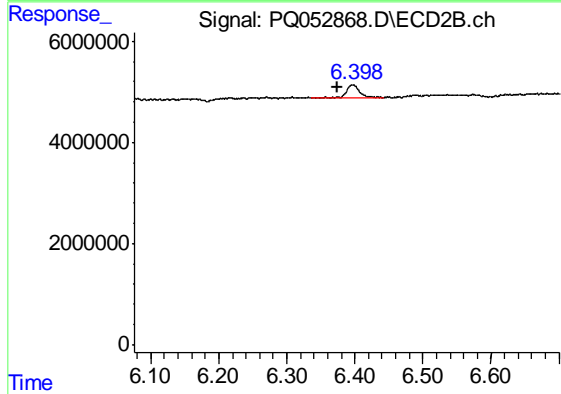
#25 AR-1248-5

R.T.: 6.397 min
 Delta R.T.: -0.020 min
 Response: 3842345
 Conc: 8.61 ng/ml



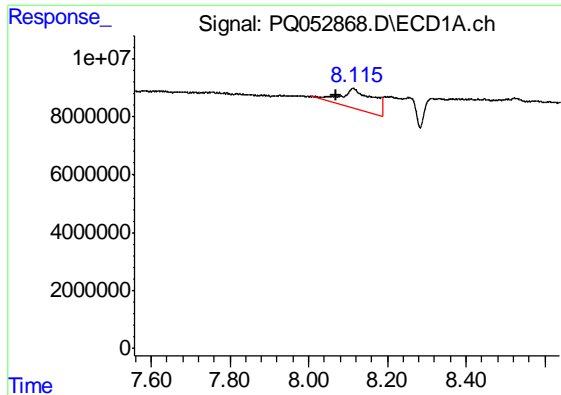
#26 AR-1254-1

R.T.: 7.481 min
 Delta R.T.: 0.021 min
 Response: 67031809
 Conc: 49.33 ng/ml



#26 AR-1254-1

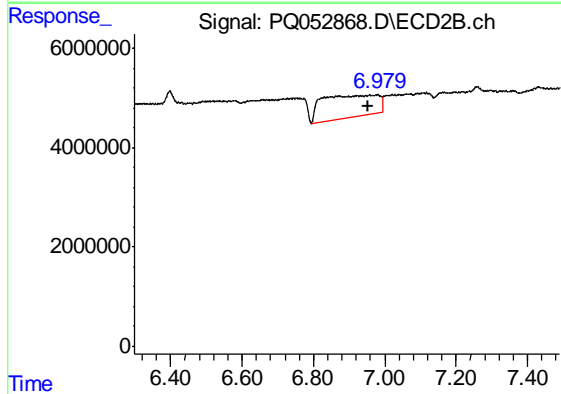
R.T.: 6.397 min
 Delta R.T.: 0.023 min
 Response: 3842345
 Conc: 4.28 ng/ml



#28 AR-1254-3

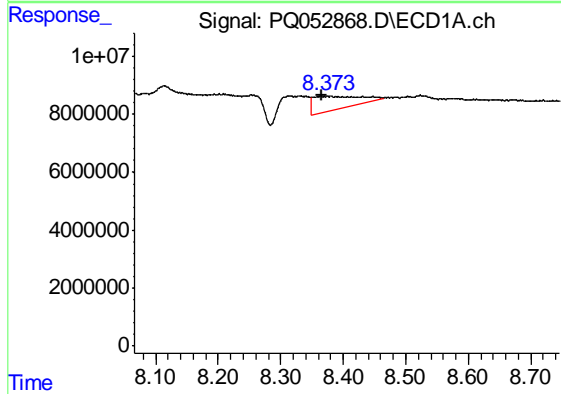
R.T.: 8.114 min
 Delta R.T.: 0.042 min
 Response: 41355810
 Conc: 17.64 ng/ml

Instrument :
 ECD_Q
 ClientSampled :
 AIBLK31



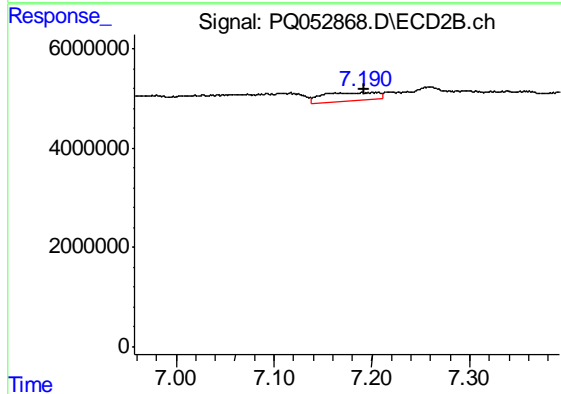
#28 AR-1254-3

R.T.: 6.980 min
 Delta R.T.: 0.026 min
 Response: 48357896
 Conc: 37.29 ng/ml



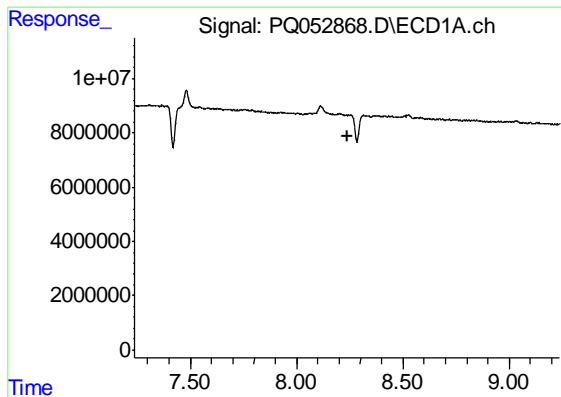
#29 AR-1254-4

R.T.: 8.364 min
 Delta R.T.: -0.002 min
 Response: 22798451
 Conc: 13.20 ng/ml



#29 AR-1254-4

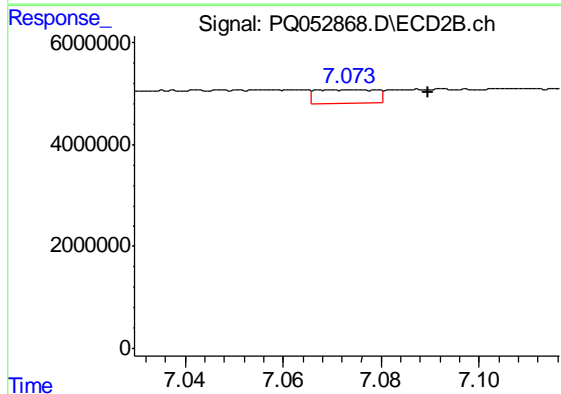
R.T.: 7.190 min
 Delta R.T.: -0.002 min
 Response: 6482530
 Conc: 7.28 ng/ml



#31 AR-1260-1

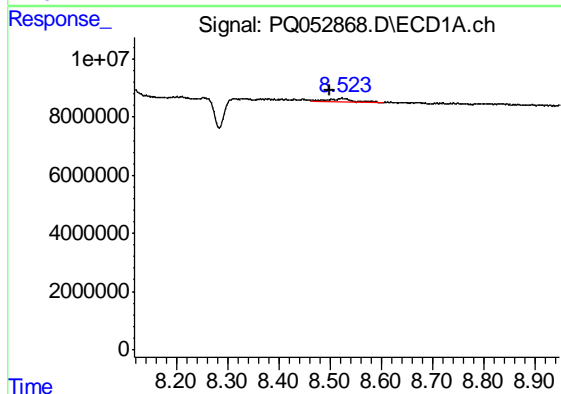
R.T.: 0.000 min
 Exp R.T. : 8.237 min
 Response: 0
 Conc: N.D.

Instrument :
 ECD_Q
 ClientSampleId :
 AIBLK31



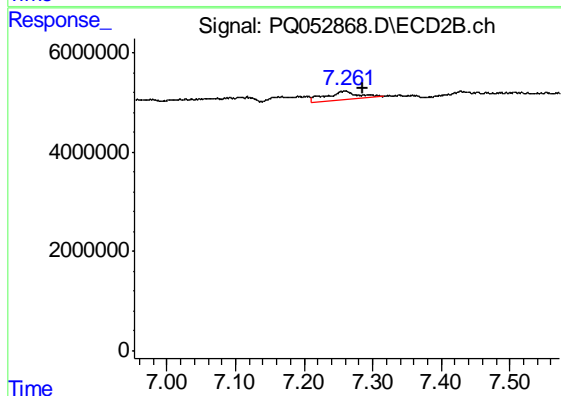
#31 AR-1260-1

R.T.: 7.074 min
 Delta R.T.: -0.015 min
 Response: 2202683
 Conc: 3.81 ng/ml



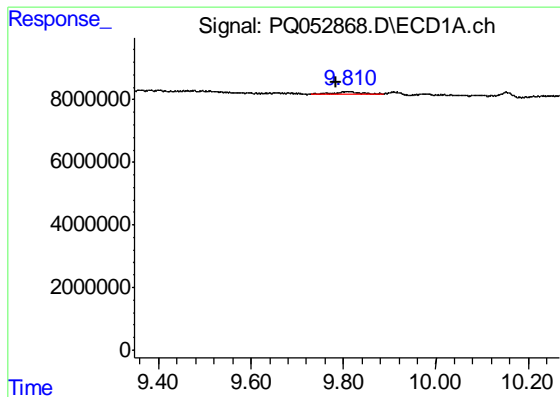
#32 AR-1260-2

R.T.: 8.525 min
 Delta R.T.: 0.025 min
 Response: 3148569
 Conc: 2.40 ng/ml



#32 AR-1260-2

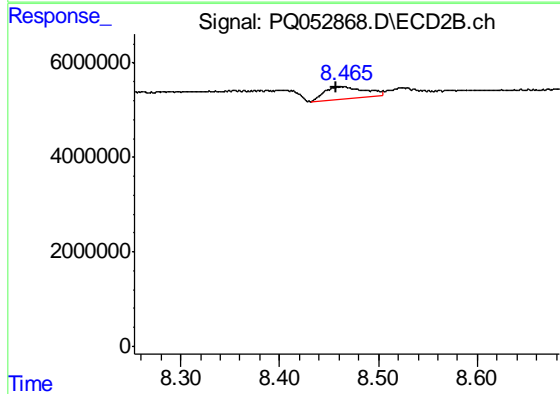
R.T.: 7.261 min
 Delta R.T.: -0.025 min
 Response: 5859321
 Conc: 7.35 ng/ml



#38 AR-1262-3

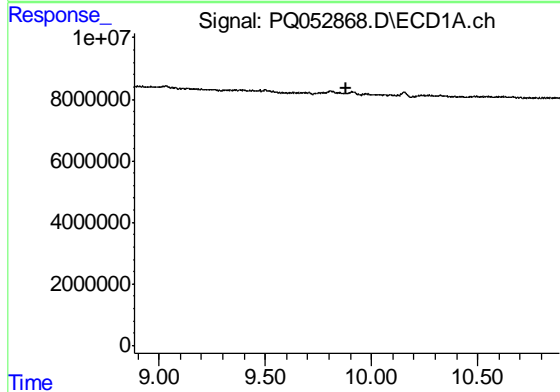
R.T.: 9.807 min
 Delta R.T.: 0.022 min
 Response: 2879395
 Conc: 1.30 ng/ml

Instrument :
 ECD_Q
 ClientSampleId :
 AIBLK31



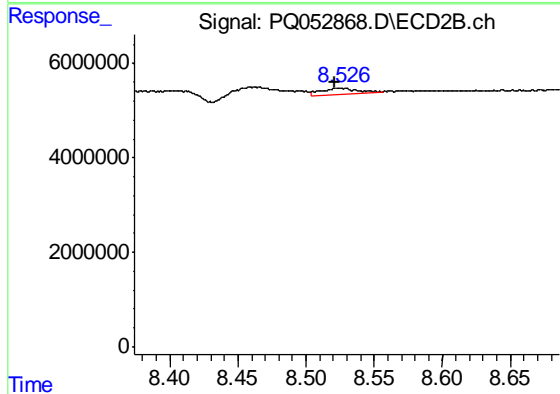
#38 AR-1262-3

R.T.: 8.464 min
 Delta R.T.: 0.007 min
 Response: 7580394
 Conc: 9.38 ng/ml



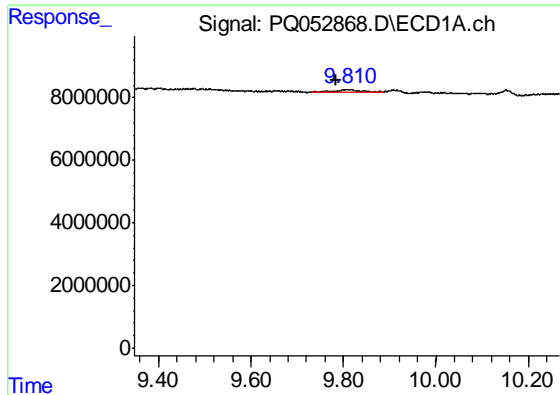
#39 AR-1262-4

R.T.: 0.000 min
 Exp R.T. : 9.884 min
 Response: 0
 Conc: N.D.



#39 AR-1262-4

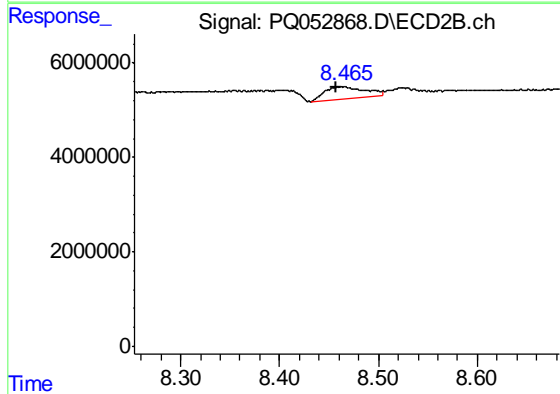
R.T.: 8.524 min
 Delta R.T.: 0.003 min
 Response: 2437281
 Conc: 1.75 ng/ml



#41 AR-1268-1

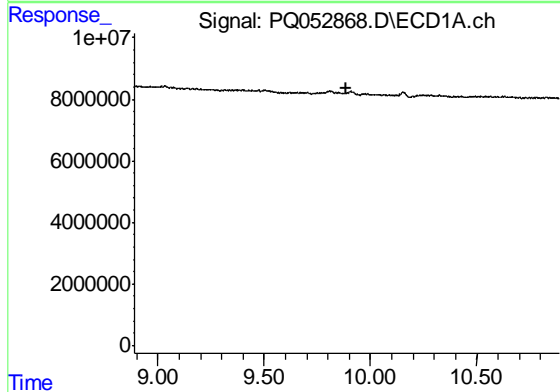
R.T.: 9.807 min
 Delta R.T.: 0.022 min
 Response: 2879395
 Conc: 0.73 ng/ml

Instrument :
 ECD_Q
 ClientSampleId :
 AIBLK31



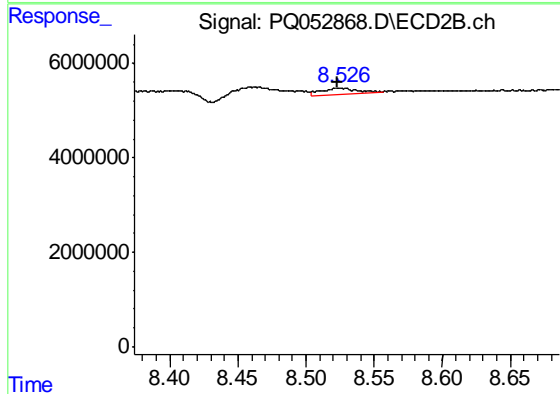
#41 AR-1268-1

R.T.: 8.464 min
 Delta R.T.: 0.007 min
 Response: 7580394
 Conc: 3.20 ng/ml



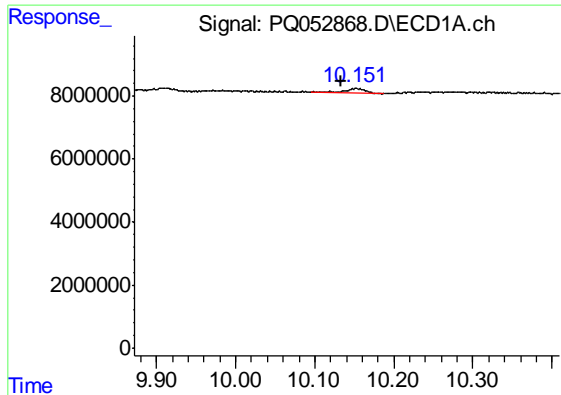
#42 AR-1268-2

R.T.: 0.000 min
 Exp R.T. : 9.889 min
 Response: 0
 Conc: N.D.



#42 AR-1268-2

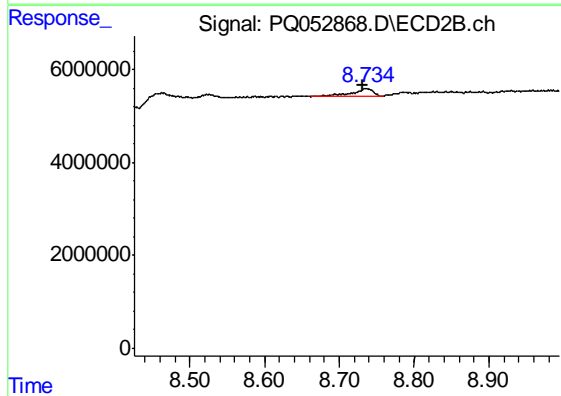
R.T.: 8.524 min
 Delta R.T.: 0.002 min
 Response: 2437281
 Conc: 1.20 ng/ml



#43 AR-1268-3

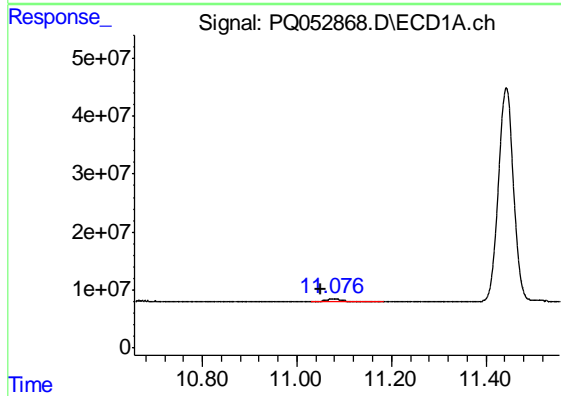
R.T.: 10.152 min
 Delta R.T.: 0.020 min
 Response: 2581714
 Conc: 0.81 ng/ml

Instrument :
 ECD_Q
 ClientSampleId :
 AIBLK31



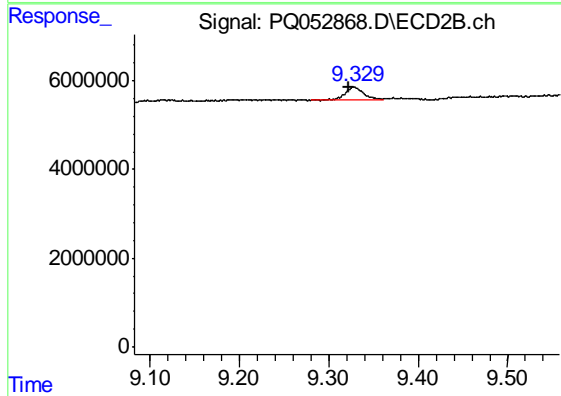
#43 AR-1268-3

R.T.: 8.736 min
 Delta R.T.: 0.004 min
 Response: 3377068
 Conc: 1.90 ng/ml



#45 AR-1268-5

R.T.: 11.077 min
 Delta R.T.: 0.028 min
 Response: 8984610
 Conc: 0.84 ng/ml



#45 AR-1268-5

R.T.: 9.329 min
 Delta R.T.: 0.006 min
 Response: 3669656
 Conc: 0.76 ng/ml